



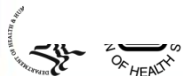
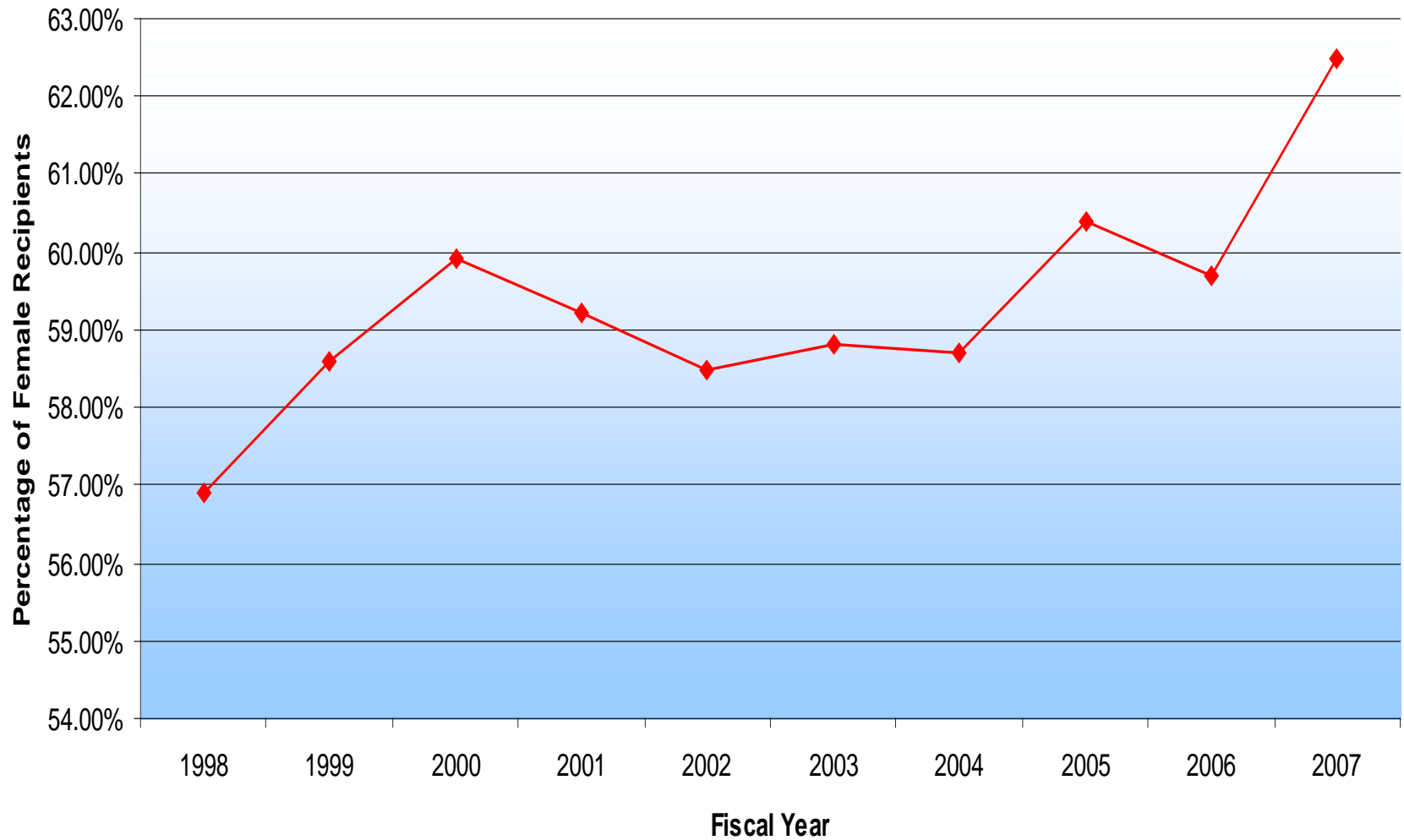
WOMEN IN RESEARCH:

The Involvement Of Women In NIH Extramural Research, Training and Career Development Programs





FEMALE PREDOCTORAL RUTH L. KIRSCHSTEIN NRSA PREDOCTORAL FELLOWSHIP RECIPIENTS (F31) FY 1998-2007





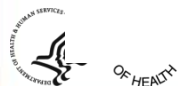
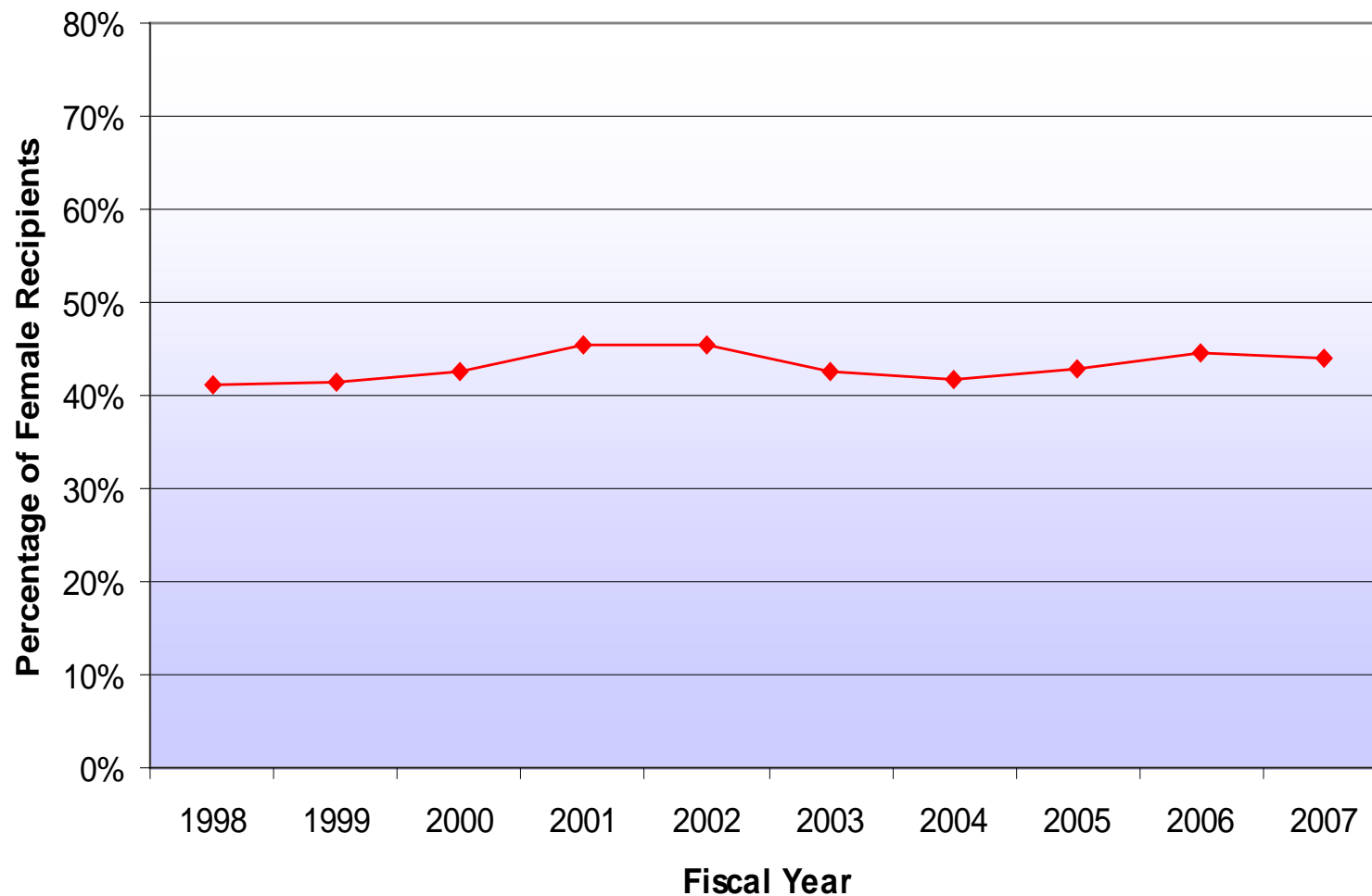
NIH RESEARCH FELLOWSHIP AWARDS FY 1998-2007

FY	Total	Female	Male	Female as % of coded
Pre-Doc Fellowship (F30, F31)				
1998	664	358	271	56.9 %
2000	741	410	275	59.9 %
2001	907	498	343	59.2 %
2002	1,021	566	401	58.5 %
2003	1,111	623	437	58.8 %
2004	1,202	682	479	58.7 %
2005	1,267	745	489	60.4 %
2006	1,370	785	529	59.7 %
2007	1,362	852	510	62.5%





FEMALE POSTDOCTORAL RUTH L. KIRSCHSTEIN NRSA INDIVIDUAL FELLOWSHIP RECIPIENTS (F32) FY 1998-2007





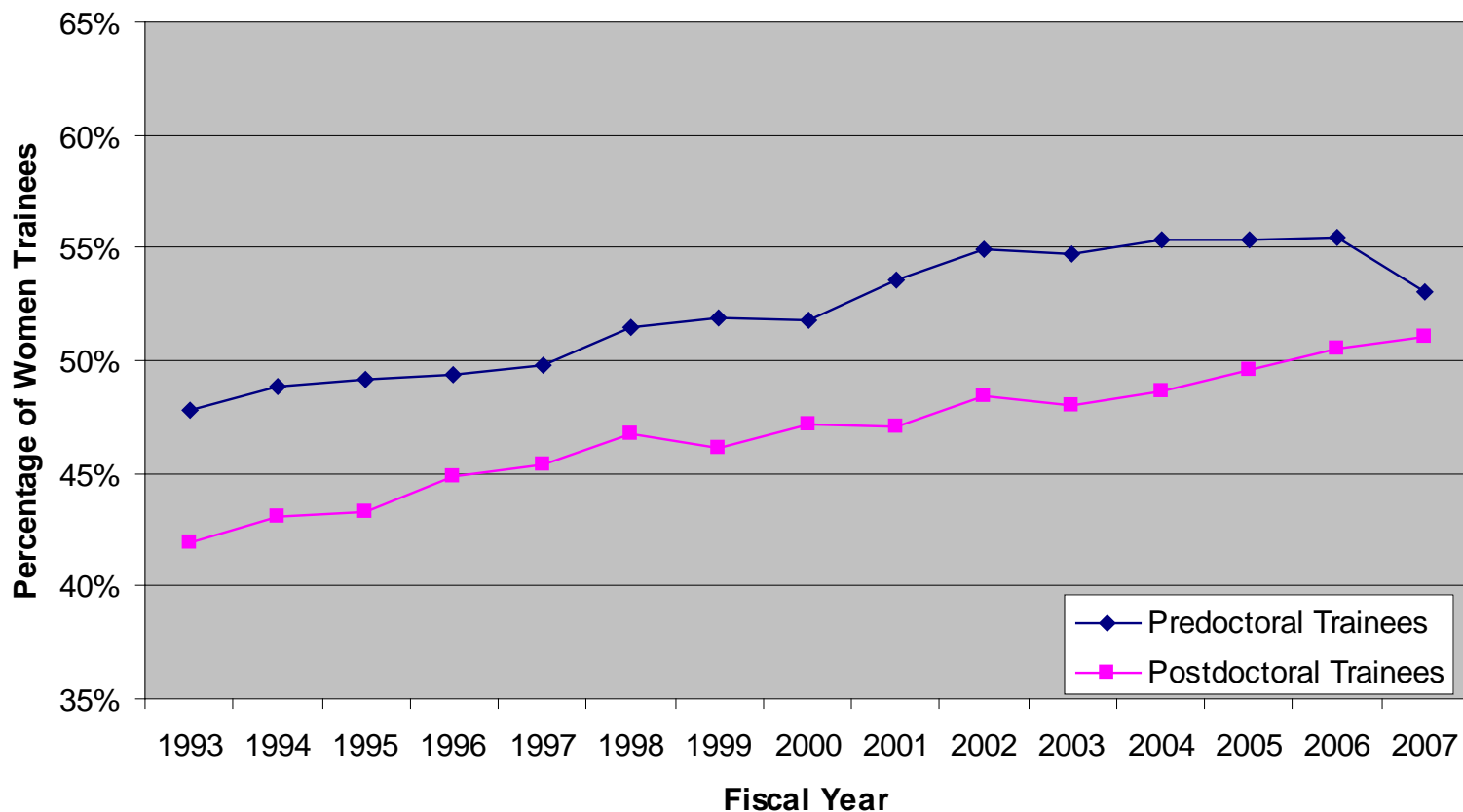
WOMEN AND MEN SUPPORTED BY NIH POSTDOCTORAL FELLOWSHIPS FY 1998-2007

FY	Total	Female	Male	Female as % of coded
Post-Doc Fellowship (F32)				
1998	1878	718	1030	41.1 %
1999	1910	748	1054	41.5 %
2000	1851	744	1002	42.6 %
2001	1805	786	942	45.5 %
2002	1656	721	867	45.4 %
2003	1614	669	894	42.8 %
2004	1577	646	901	41.8 %
2005	1617	682	910	42.8 %
2006	1587	672	838	44.5 %
2007	1338	590	748	44.1%





WOMEN AS A PERCENTAGE OF PREDOCTORAL AND POSTDOCTORAL TRAINEES SUPPORTED BY RUTH L. KIRSCHSTEIN (T32 & T35) INSTITUTIONAL RESEARCH TRAINING GRANTS FOR FY 1998-2007





WOMEN AND MEN SUPPORTED AS PREDOCTORAL AND POSTDOCTORAL TRAINEES ON NIH RESEARCH TRAINING GRANTS FY 1998-2007

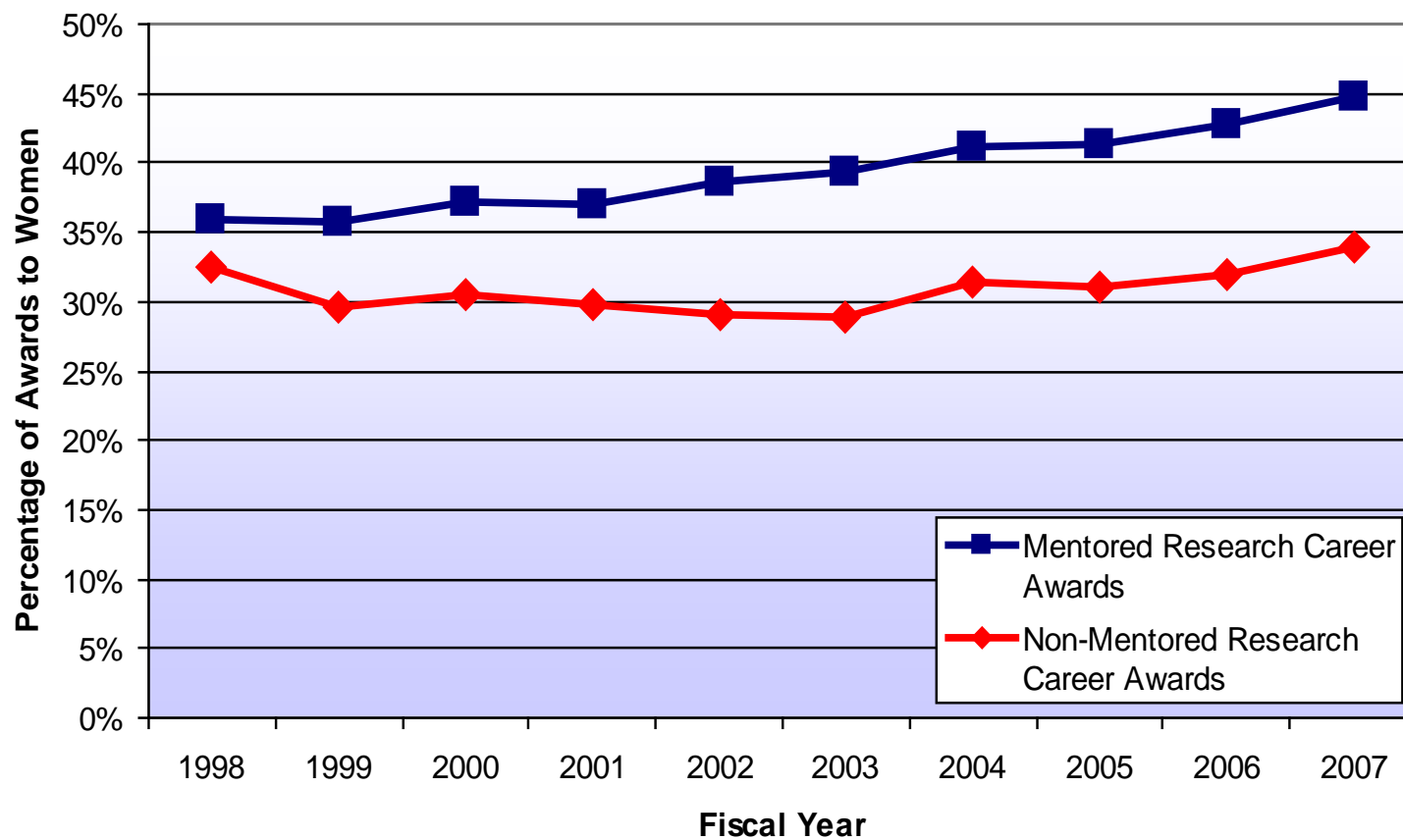
Pre-Doc					Post-Doc				
FY	Total	Women	Male	Women as % of coded	FY	Total	Women	Male	Women as % of coded
1998	9216	4035	3793	51.5 %	1998	4485	1885	2136	46.8 %
1999	9544	4317	4005	51.9 %	1999	4559	1954	2279	46.1 %
2000	9287	4558	4246	51.8 %	2000	4613	2108	2359	47.2 %
2001	9604	4992	4328	53.6 %	2001	4858	2247	2524	47.1 %
2002	9957	5283	4332	54.9 %	2002	5069	2402	2562	48.4 %
2003	10400	5487	4549	54.7 %	2003	5325	2517	2714	48.0 %
2004	10596	5679	4572	55.4 %	2004	5354	2562	2684	48.6 %
2005	10608	5682	4739	54.5 %	2005	4937	2409	2438	49.7 %
2006	10096	5364	4500	54.4%	2006	4556	2244	2197	50.5 %
2007	6646	3496	3026	53.6%	2007	2285	1125	1093	50.7%

Source: Current As of January, 2008
 trainee data based on receipt of appointment forms from trainees
 between 1 and 10 percent of records uncoded over the years from 1993-2006





FEMALE RECIPIENTS ON MENTORED (K01, K08, K23) AND NON-MENTORED (K02, K04) RESEARCH CAREER AWARDS FY 1998-2007





NIH RESEARCH DEVELOPMENT AWARDS FY 1998-2007

FY	Total	Female	Male	Female as % of coded
Mentored Research Career (K01, K08, K23)				
1998	1398	481	856	36.0 %
1999	1602	545	979	35.8 %
2000	1941	676	1140	37.2 %
2001	2166	749	1275	37.0 %
2002	2428	876	1389	38.7 %
2003	2719	998	1541	39.3 %
2004	2928	1131	1621	41.1 %
2005	3045	1195	1698	41.3 %
2006	3018	1222	1633	42.8 %
2007	2956	1278	1569	43.2 %





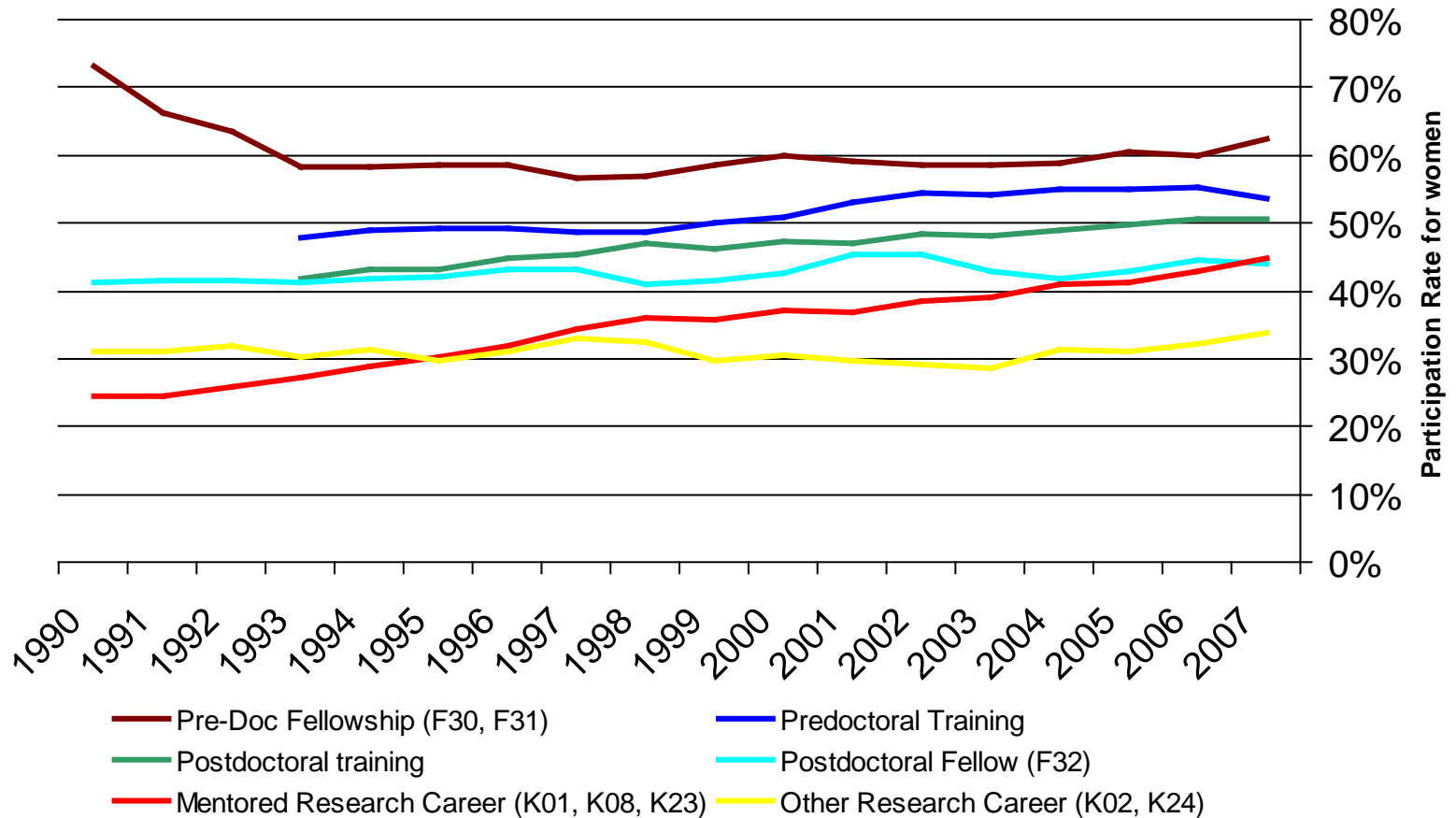
NIH RESEARCH CAREER AWARDS FY 1998 - 2007

FY	Total	Female	Male	Female as % of coded
Other Research Career (K02, K24)				
1998	256	81	168	32.5 %
1999	358	103	244	29.7 %
2000	456	135	307	30.5 %
2001	509	148	350	29.7 %
2002	539	153	372	29.1 %
2003	565	159	393	28.8 %
2004	519	159	347	31.4 %
2005	513	156	347	31.0 %
2006	482	151	321	32.0 %
2007	472	158	308	33.4%



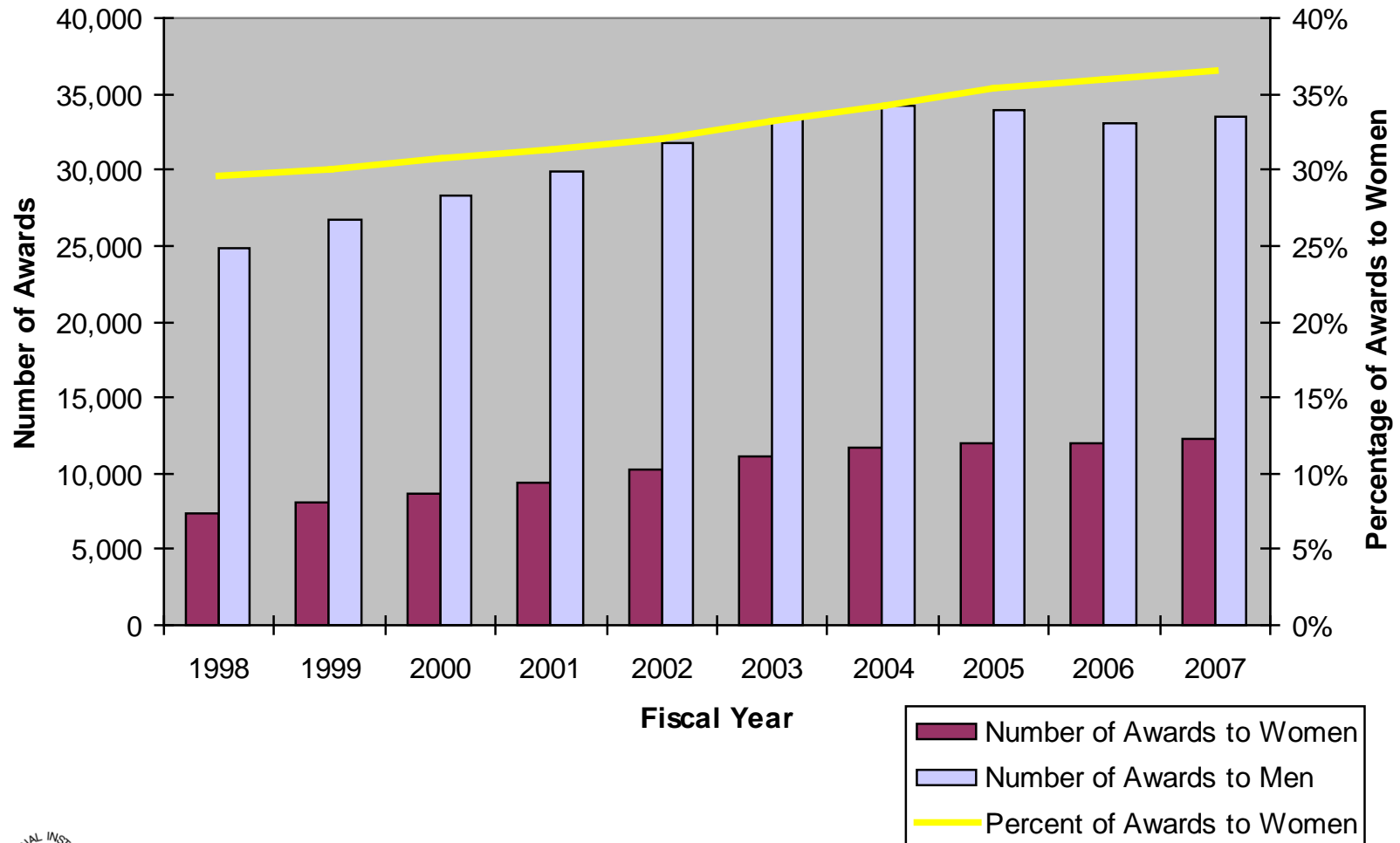


PARTICIPATION RATES FOR WOMEN IN SELECTED RESEARCH TRAINING AND CAREER DEVELOPMENT ACTIVITIES FY 1998 – 2008 (TO DATE)



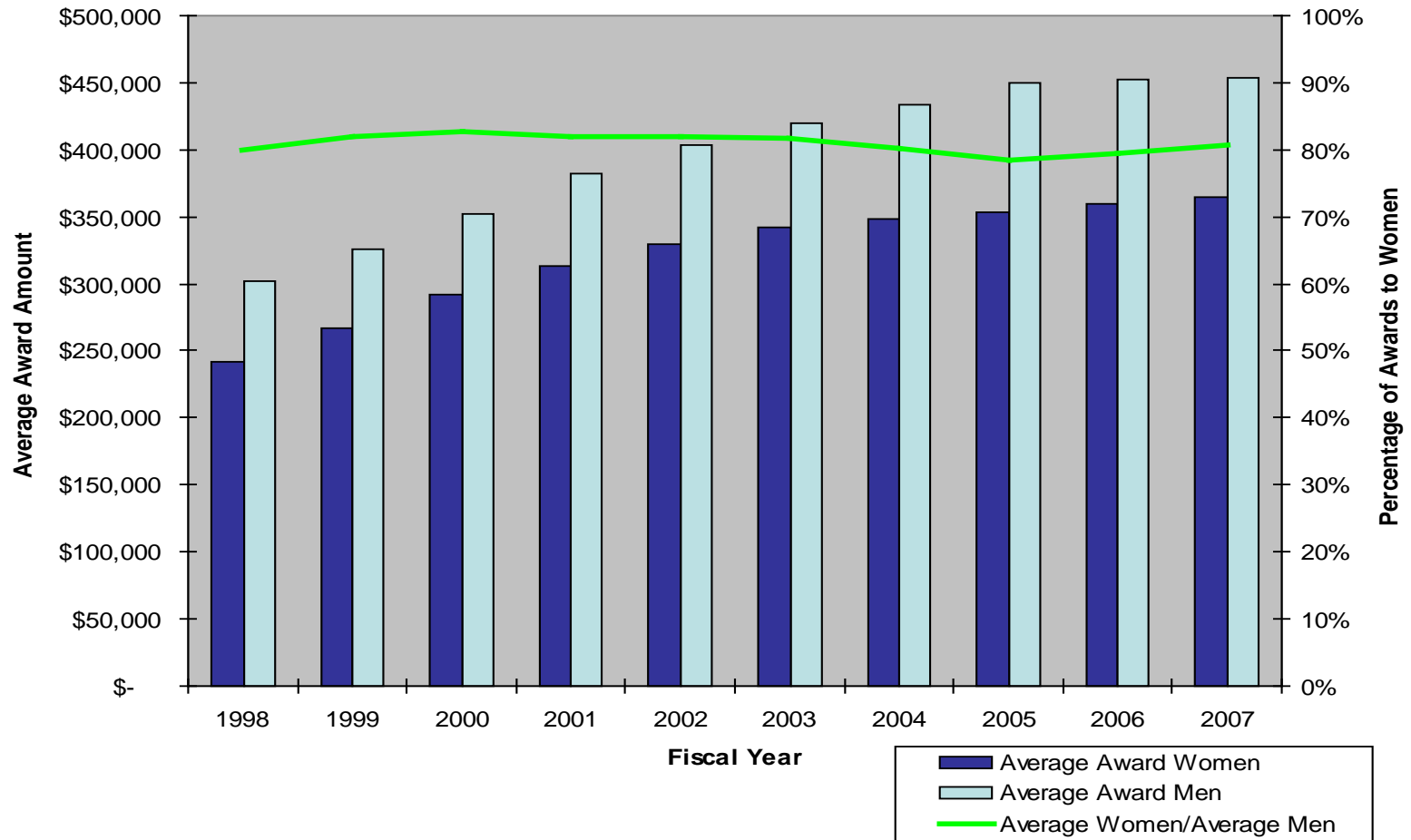


NUMBER OF RESEARCH GRANT AWARDS TO WOMEN AND MEN AND PERCENTAGE OF AWARDS TO WOMEN FY 1998 – 2007





AVERAGE SIZE OF RESEARCH GRANT AWARDS TO WOMEN AND MEN ALONG WITH WOMEN'S GRANTS EXPRESSED AS A PERCENTAGE OF THE SIZE OF MEN'S GRANTS FY 1998-2007





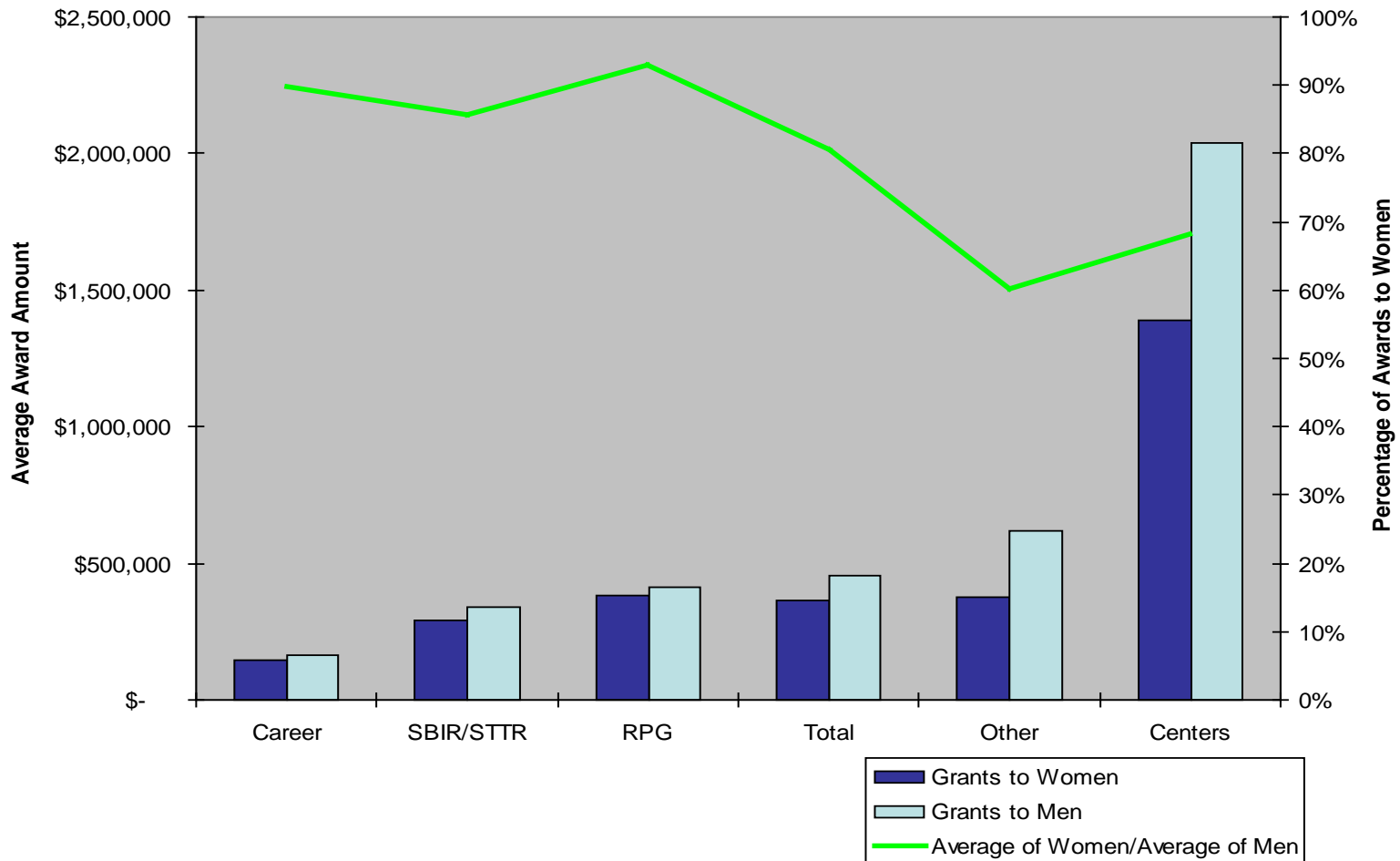
NIH COMPETING AND NON-COMPETING RESEARCH GRANT AWARDS, FY 1998 - 2007

FY	All Awards			Awards to Women			Awards to Men		
	Number	Amount	Average	Number	Amount	Average	Number	Amount	Average
1998	33,700	\$9,800,496,534	\$290,816	7,362	\$1,778,403,076	\$241,565	24,877	\$7,517,738,555	\$302,196
1999	35,874	\$11,229,447,858	\$313,025	8,040	\$2,144,490,360	\$266,728	26,753	\$8,701,158,914	\$325,240
2000	38,301	\$13,002,508,001	\$339,482	8,713	\$2,541,554,969	\$291,697	28,320	\$9,989,878,211	\$352,750
2001	40,664	\$14,907,516,041	\$366,602	9,386	\$2,937,614,964	\$312,978	29,890	\$11,412,976,879	\$381,833
2002	43,520	\$16,830,194,185	\$386,723	10,199	\$3,367,396,540	\$330,169	31,801	\$12,817,285,291	\$403,047
2003	46,081	\$18,461,462,170	\$400,631	11,080	\$3,795,380,153	\$342,543	33,416	\$14,010,117,983	\$419,264
2004	47,464	\$19,607,812,023	\$413,109	11,693	\$4,067,519,485	\$347,859	34,200	\$14,838,720,014	\$433,881
2005	47,345	\$20,206,478,806	\$426,785	11,998	\$4,245,982,038	\$353,779	33,870	\$15,247,828,912	\$450,304
2006	46,797	\$20,154,363,154	\$430,676	11,929	\$4,297,673,965	\$360,271	33,107	\$14,991,284,499	\$452,813
2007	47,181	\$20,415,899,325	\$432,714	12,266	\$4,480,469,697	\$353,740	33,551	\$15,213,452,910	\$453,442





AVERAGE SIZE OF GRANTS TO WOMEN COMPARED TO MEN BY BUDGET CATEGORY FY 2007





NIH RESEARCH GRANTS BY BUDGET CATEGORY FY 2007

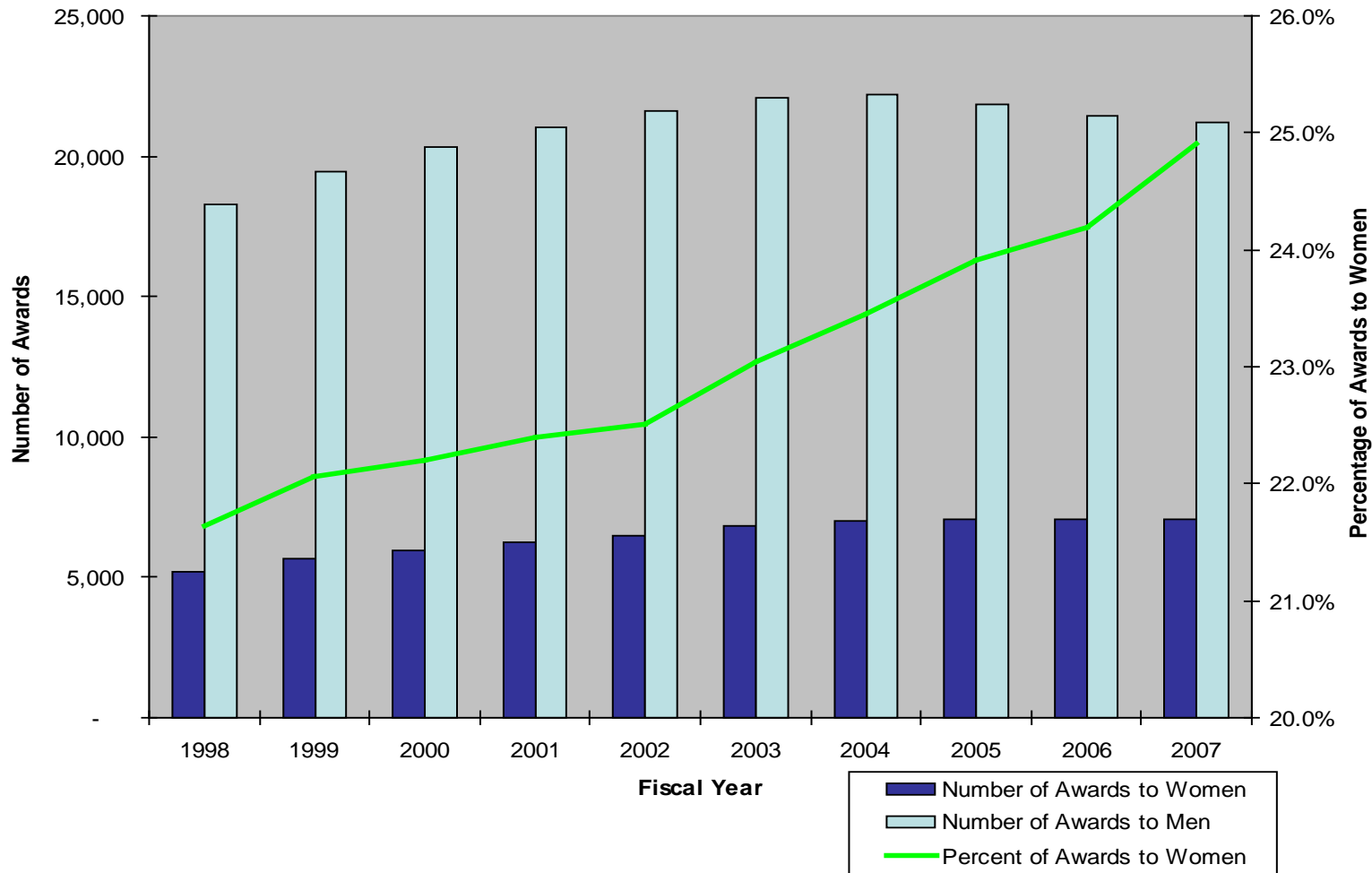
Activity	All Awards			Awards to Women			Awards to Men		
	Number	Amount	Average	Number	Amount	Average	Number	Amount	Average
Career	4334	679,798,172	156,852	1761	256,745,649	145,795	2396	395,534,746	165,081
SSBIR/STTR	1,799	634,047,768	352,444	285	95,936,630	336,619	1341	479,725,227	357,736
RPG	37,275	15,041,523,308	403,971	9399	3,582,188,223	381,124	27091	11,106535,585	409,971
Total	47,181	20,415,899,325	432,714	12,266	4,480,469,697	365,276	33,551	15,213,452,910	453,443
Other	2361	1,314,571,367	556,786	586	219,251,829	374,150	1633	1,012,500,258	620,025
Centers	1412	2,745,958,710	1,944,730	235	326,347,366	1,388,712	1090	2,219,157,094	2,035,924

Source: IMPAC-II Pub files



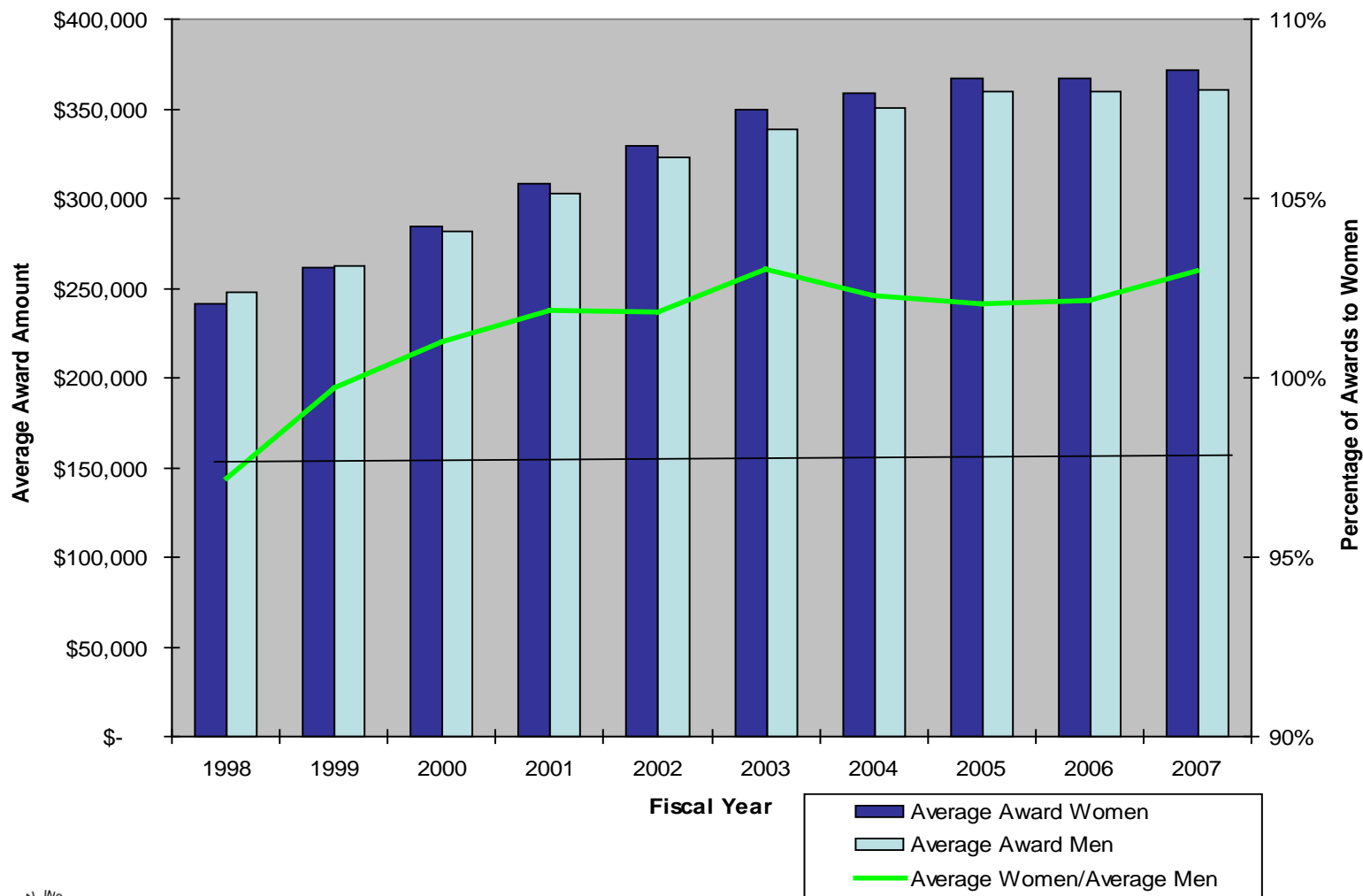


NUMBER OF R01 EQUIVALENT AWARDS TO WOMEN AND MEN WITH PERCENTAGE OF AWARDS TO WOMEN FY 1998 - 2007





AVERAGE SIZE OF R01 EQUIVALENT GRANTS (R01, R29, R37) AWARDS TO WOMEN AND MEN ALONG WITH WOMEN'S GRANTS EXPRESSED AS A PERCENTAGE OF THE SIZE OF MEN'S GRANTS FY 1998 - 2007





NIH COMPETING AND NON-COMPETING R01 EQUIVALENT AWARDS FY 1998 - 2007

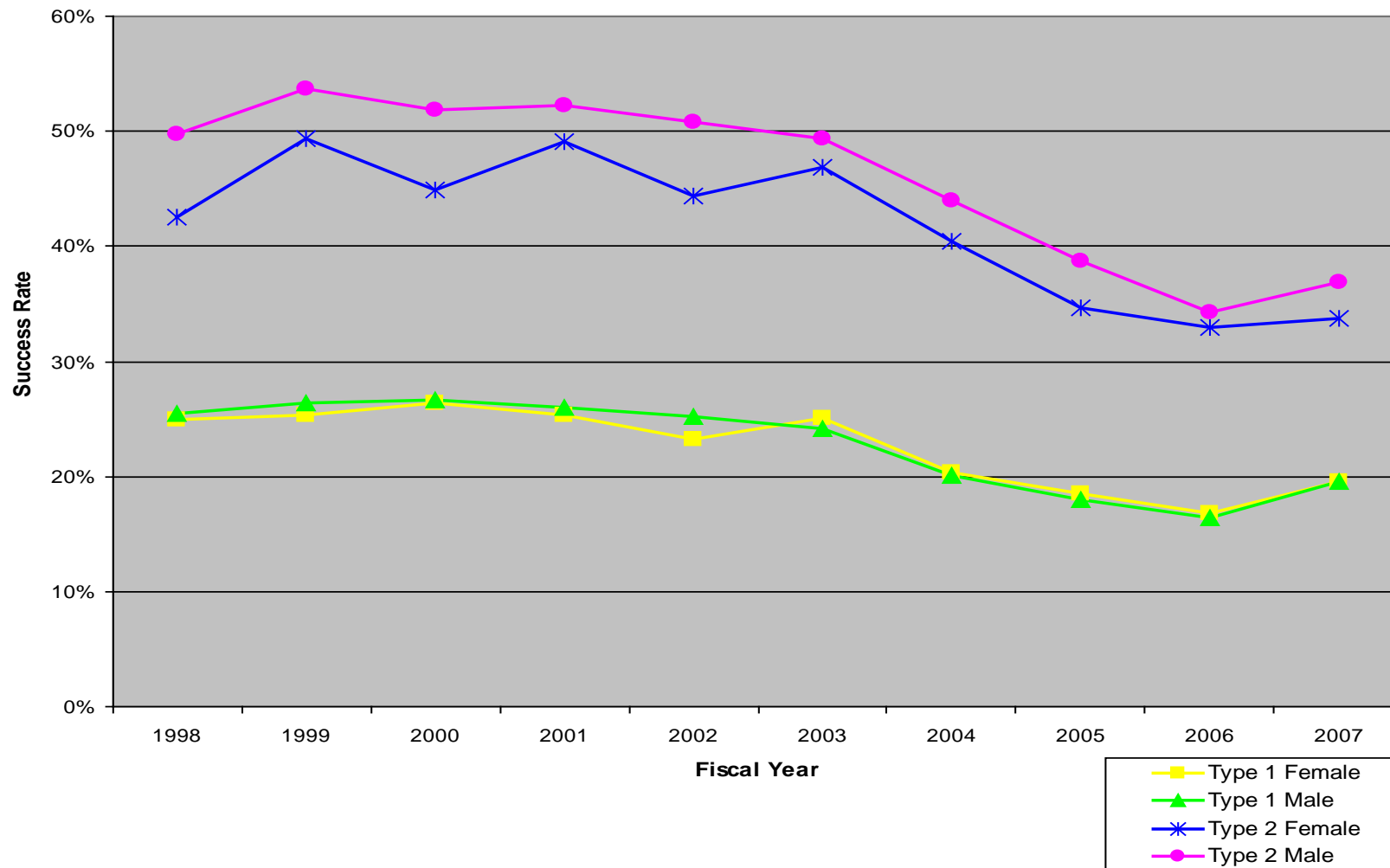
FY	All Awards			Awards to Women			Awards to Men		
	Number	Amount	Average	Number	Amount	Average	Number	Amount	Average
1998	24,041	\$5,919,656,552	\$246,232	5,203	\$1,253,466,964	\$240,912	18,297	\$4,534,358,720	\$247,820
1999	25,682	\$6,737,516,567	\$262,344	5,665	\$1,483,456,832	\$261,864	19,471	\$5,112,753,237	\$262,583
2000	26,951	\$7,615,901,117	\$282,583	5,982	\$1,703,234,283	\$284,727	20,348	\$5,736,161,633	\$281,903
2001	27,992	\$8,512,482,421	\$304,318	6,269	\$1,934,694,676	\$308,613	21,019	\$6,366,531,472	\$302,894
2002	28,864	\$9,361,124,010	\$324,318	6,498	\$2,139,052,481	\$329,186	21,638	\$6,995,004,761	\$323,870
2003	29,619	\$10,099,338,559	\$340,975	6,825	\$2,382,506,602	\$349,085	22,057	\$7,474,464,773	\$338,870
2004	29,965	\$10,554,069,482	\$352,213	7,025	\$2,518,741,382	\$358,540	22,209	\$7,783,403,371	\$350,462
2005	29,549	\$10,685,232,289	\$361,611	7,066	\$2,596,121,636	\$367,410	21,841	\$7,862,105,334	\$359,970
2006	29,123	\$10,522,350,609	\$361,307	7,046	\$2,588,180,178	\$367,326	21,419	\$7,701,290,792	\$359,554
2007	28729	\$10,427,770,948	362,920	7,042	\$2,613,584,055	\$371,142	21,231	\$7,649,343,105	\$360,291



Data from PUB



SUCCESS RATES OF MALE VS. FEMALE APPLICANTS ON NEW (TYPE 1) AND CONTINUING (TYPE 2) NIH R01 APPLICATIONS FY 1998 - 2007





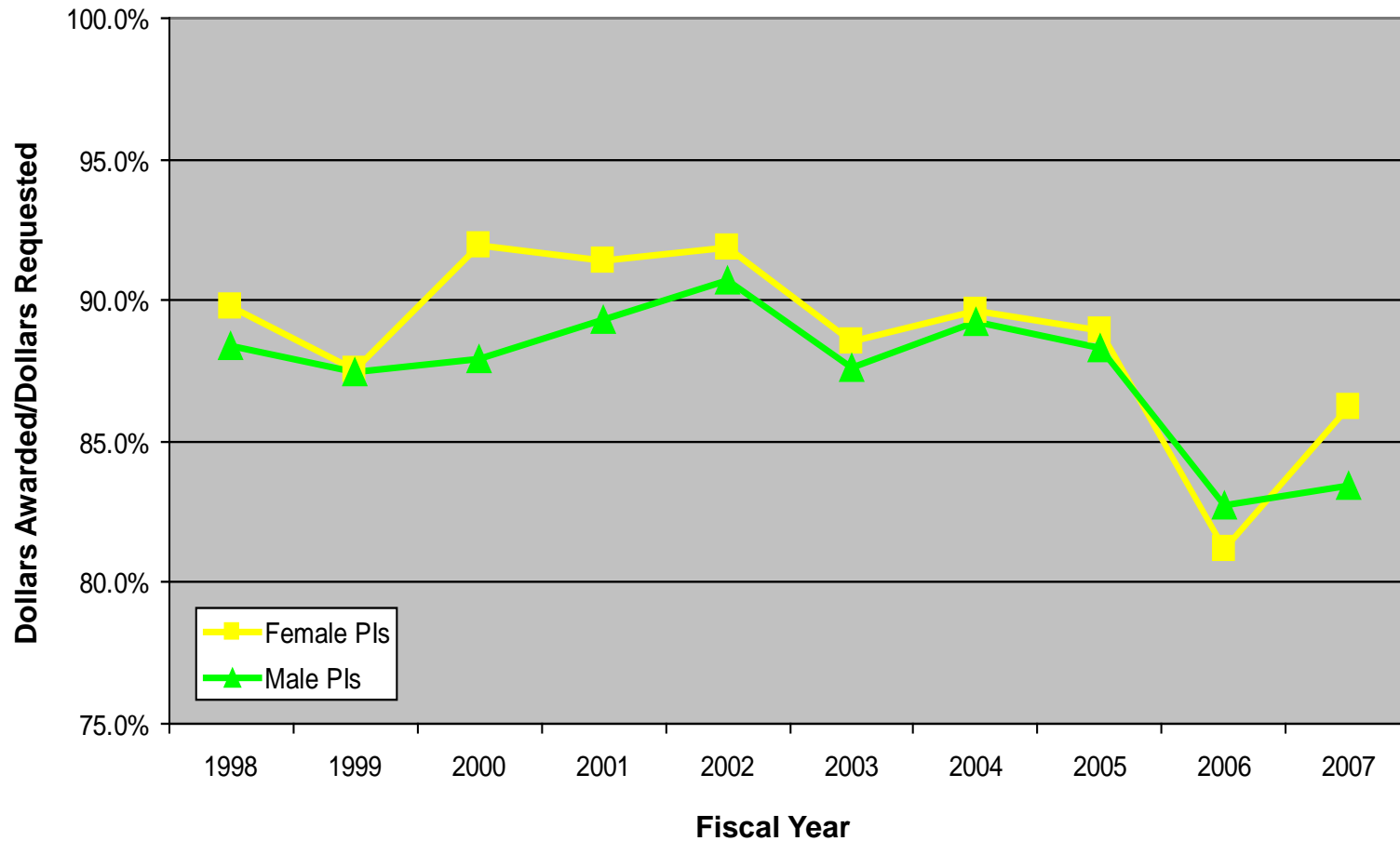
SUCCESS RATE ON NIH COMPETING R01 APPLICATIONS BY GENDER OF PRINCIPAL INVESTIGATOR FY 1998-2007

Female Applicants							Male Applicants					
FY	NIH New (Type 1) Applications			NIH Continuing (Type 2) Applications			NIH New (Type 1) Applications			NIH Continuing (Type 2) Applications		
	Number Reviewed	Number Awarded	Success Rate	Number Reviewed	Number Awarded	Success Rate	Number Reviewed	Number Awarded	Success Rate	Number Reviewed	Number Awarded	Success Rate
1998	2,921	727	24.9 %	993	423	42.6 %	9,729	2,472	25.4 %	3,653	1,817	49.7 %
1999	3,874	980	25.3 %	1,046	516	49.3 %	11,835	3,126	26.4 %	3,899	2,096	53.8 %
2000	4,041	1,066	26.4 %	1,019	458	44.9 %	12,062	3,213	26.6 %	3,879	2,011	51.8 %
2001	4,132	1,046	25.3 %	1,042	511	49.0 %	11,998	3,118	26.0 %	3,838	2,004	52.2 %
2002	4,329	1,006	23.2 %	1,102	489	44.4 %	12,133	3,062	25.2 %	3,866	1,966	50.9 %
2003	4,727	1,187	25.1 %	1,301	610	46.9 %	13,550	3,267	24.1 %	4,160	2,056	49.4 %
2004	5,410	1,099	20.3 %	1,357	549	40.5 %	15,195	3,057	20.1 %	4,519	1,985	43.9 %
2005	5,613	1,036	18.5 %	1,410	488	34.6 %	15,572	2,798	18.0 %	4,837	1,872	38.7 %
2006	5,596	937	16.7 %	1,485	489	32.9 %	15,419	2,540	16.5 %	4,991	1,712	34.3 %
2007	5,235	1,029	19.7%	1,523	528	34.7%	14,386	2,809	19.5%	4,986	1,914	38.4%



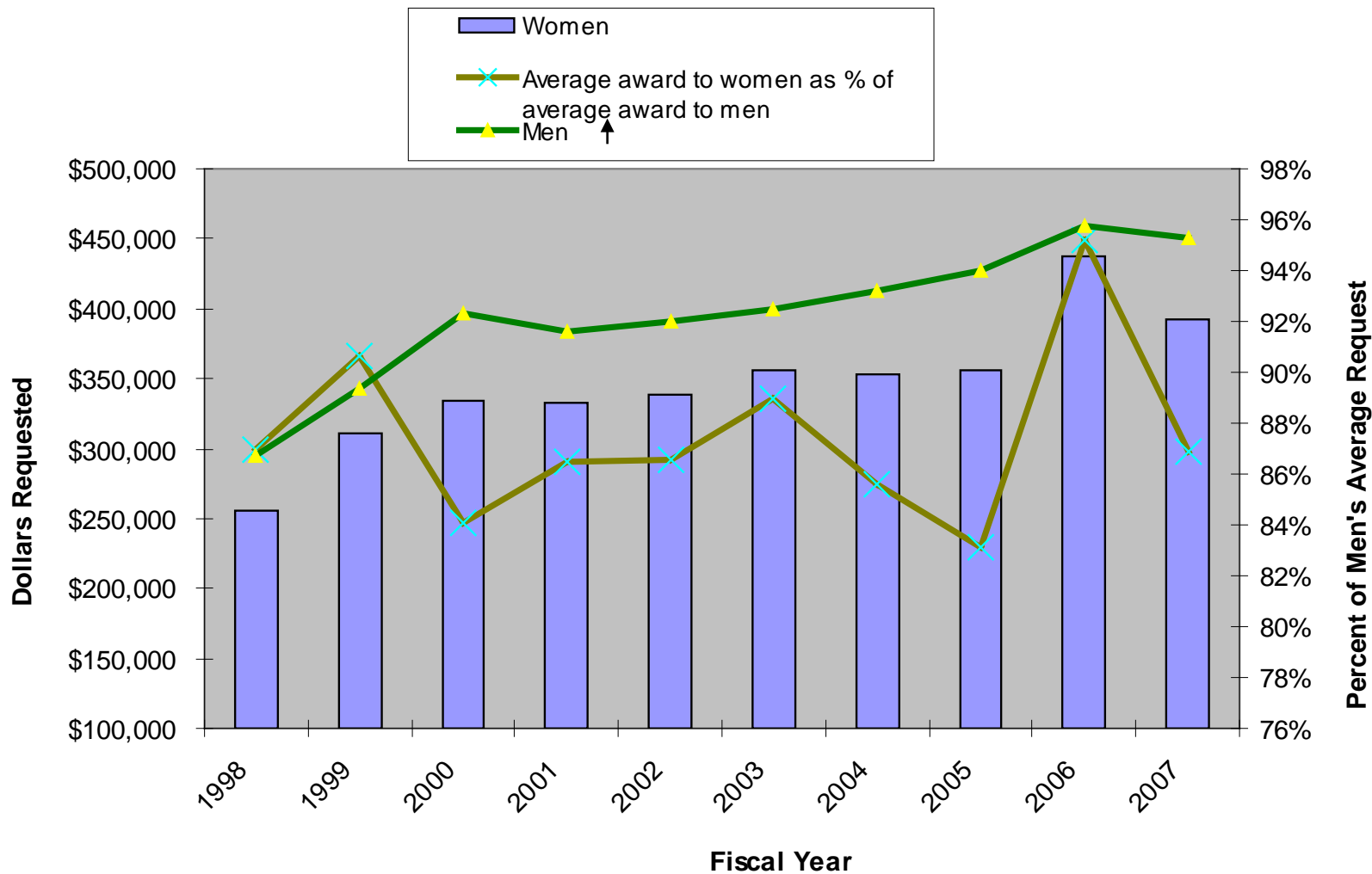


HOW HAS THE PARTICIPATION OF WOMEN AS PRINCIPAL INVESTIGATORS ON NIH RESEARCH PROJECT GRANTS (RPGS) AND AS REVIEWERS CHANGED OVER TIME?





AMOUNT OF AVERAGE REQUESTED (TOTAL) COSTS OF RESEARCH PROJECT GRANTS, FY 1998 – 2007





AMOUNTS REQUESTED COMPARED TO AMOUNTS AWARDS FOR NIH COMPETING RESEARCH PROJECT GRANTS BY GENDER OF THE PRINCIPAL INVESTIGATOR, FY 1998 - 2007

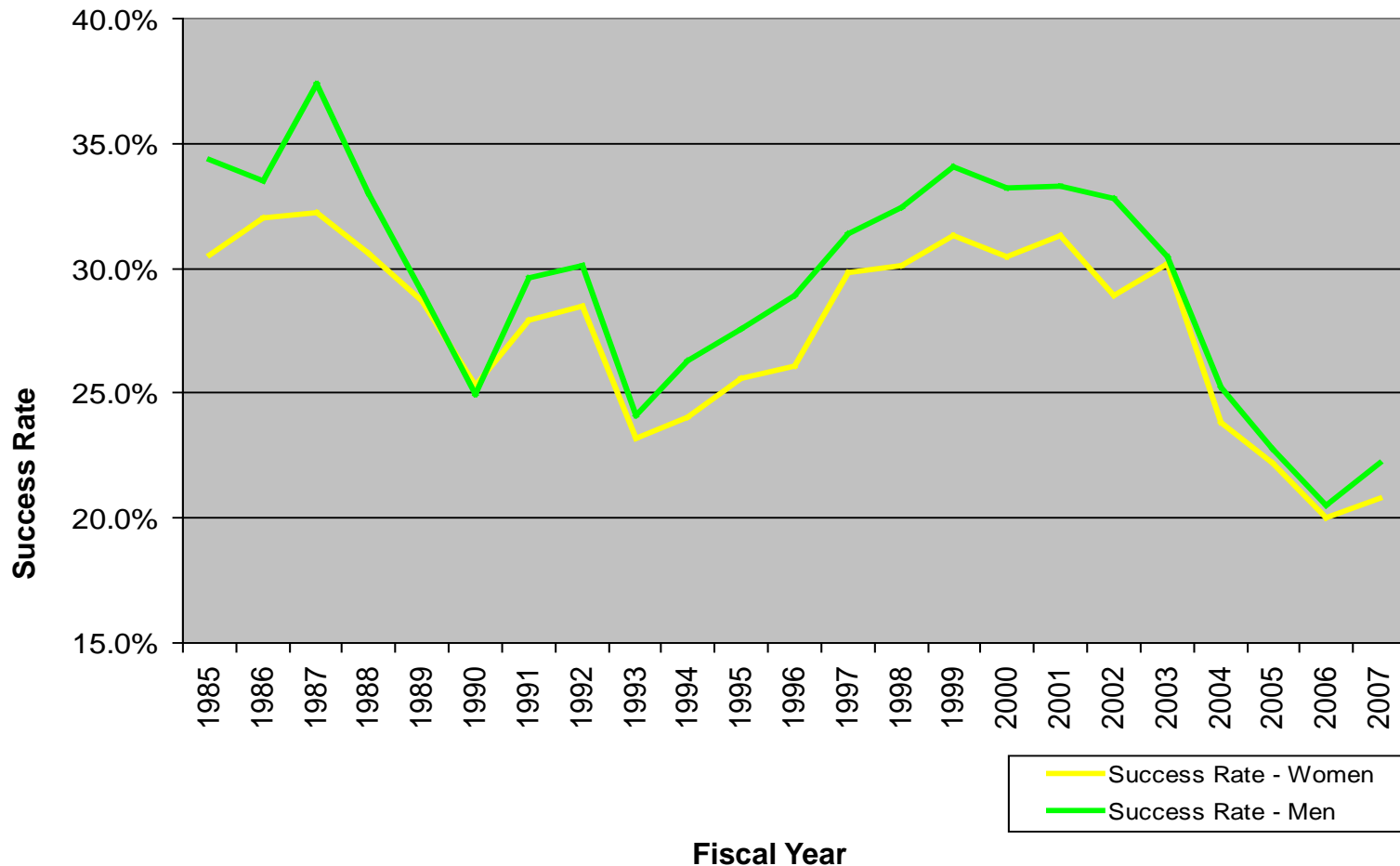
	Awards to Female Principal Investigators				Awards to Male Principal Investigators			
	Number	Requested	Awarded	Awarded/Requested	Number	Requested	Awarded	Awarded/Requested
1998	1,810	\$463,307,934	\$415,990,419	89.8 %	5,759	\$1,695,881,347	\$1,498,526,256	88.4 %
1999	2,060	\$641,095,917	\$561,420,818	87.6 %	6,556	\$2,250,694,818	\$1,968,709,774	87.5 %
2000	2,108	\$703,507,310	\$647,100,807	92.0 %	6,642	\$2,636,197,347	\$2,317,382,683	87.9 %
2001	2,253	\$748,021,360	\$683,487,035	91.4 %	6,756	\$2,592,821,848	\$2,315,260,683	89.3 %
2002	2,220	\$750,171,536	\$689,362,908	91.9 %	6,958	\$2,715,175,781	\$2,463,865,525	90.7 %
2003	2,712	\$964,430,768	\$853,638,581	88.5 %	7,476	\$2,988,323,830	\$2,617,491,512	87.6 %
2004	2,571	\$907,273,643	\$813,526,706	89.7 %	7,359	\$3,033,352,085	\$2,706,386,683	89.2 %
2005	2,556	\$908,319,052	\$807,980,850	89.0 %	6,893	\$2,948,426,839	\$2,604,623,041	88.3 %
2006	2,354	\$1,030,200,769	\$836,382,462	81.2 %	6,465	\$2,970,790,771	\$2,457,635,922	82.7 %
2007	2,647	\$1,036,909,340	\$894,081,900	86.2%	7,149	\$ 3,222,744,098	\$ 2,687,508,862	83.4%

Source: IMPAC-II Publication files as of April 5, 2007 Program gend_070405_rfm





SUCCESS RATES FOR WOMEN AND MEN ON COMPETING RPG APPLICATIONS FY 1985 - 2007





SUCCESS RATES FOR WOMEN AND MEN ON NIH COMPETING RESEARCH PROJECT GRANT APPLICATIONS

FY 1998 - 2007

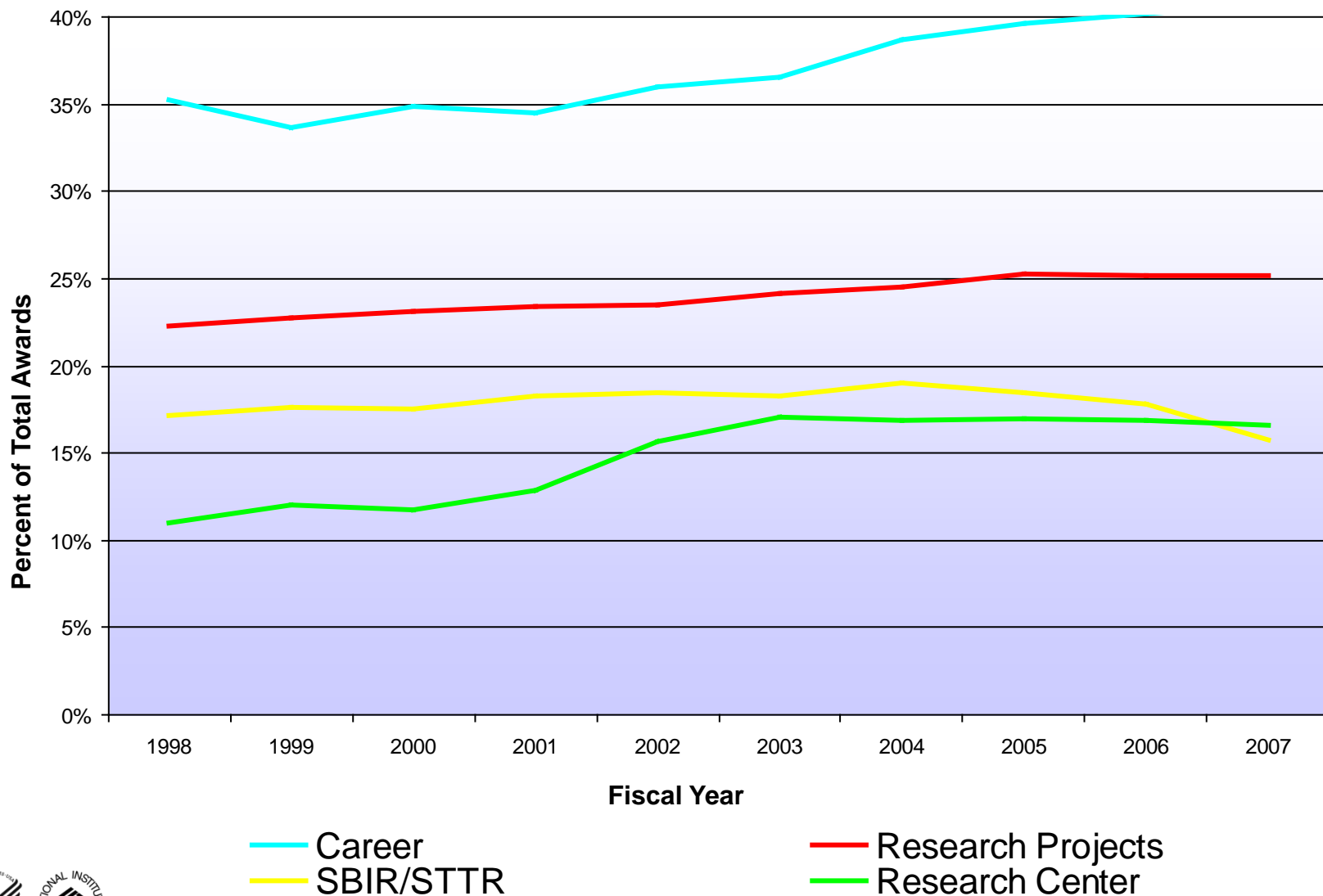
FY	Applications from Women			Applications from Men		
	Reviewed	Awarded	Success Rate	Reviewed	Awarded	Success Rate
1998	5,411	1,628	30.1 %	17,074	5,535	32.4 %
1999	5,970	1,870	31.3 %	19,379	6,259	34.1 %
2000	6,366	1,940	30.5 %	19,180	6,372	33.2 %
2001	6,806	2,129	31.3 %	19,684	6,558	33.3 %
2002	7,365	2,128	28.9 %	20,730	6,792	32.8 %
2003	8,697	2,625	30.2 %	23,946	7,302	30.5 %
2004	10,603	2,529	23.9 %	28,891	7,289	25.2 %
2005	11,377	2,528	22.2 %	30,014	6,826	22.7 %
2006	11,638	2,332	20.0 %	30,801	6,398	20.8 %
2007	12721	2651	20.8	32151	7151	24.4



Source: Success rate file, 01/18/08
 Program: SRF_Gender_050921_rfm Excludes applications without coded genders



FEMALE INVESTIGATORS AS A PERCENT OF TOTAL AWARDS BY AWARD MECHANISM FY 1998-2007





SLIDE TITLE	SLIDE NUMBER
FEMALE PREDOCTORAL RUTH L. KIRSCHSTEIN NRSA PREDOCTORAL FELLOWSHIP RECIPIENTS (F31) FY 1998-2007	2
NIH RESEARCH FELLOWSHIP AWARDS FY 1998-2007	3
FEMALE POSTDOCTORAL RUTH L. KIRSCHSTEIN NRSA INDIVIDUAL FELLOWSHIP RECIPIENTS (F32) FY 1998-2007	4
WOMEN AND MEN SUPPORTED BY NIH POSTDOCTORAL FELLOWSHIPS FY 1998-2007	5
WOMEN AS A PERCENTAGE OF PREDOCTORAL AND POSTDOCTORAL TRAINEES SUPPORTED BY RUTH L. KIRSCHSTEIN (T32 & T35) INSTITUTIONAL RESEARCH TRAINING GRANTS FOR FY 1998-2007	6
WOMEN AND MEN SUPPORTED AS PREDOCTORAL AND POSTDOCTORAL TRAINEES ON NIH RESEARCH TRAINING GRANTS FY 1998-2007	7
FEMALE RECIPIENTS ON MENTORED (K01, K08, K23) AND NON-MENTORED (K02, K04) RESEARCH CAREER AWARDS FY 1998-2007	8
NIH RESEARCH DEVELOPMENT AWARDS FY 1998-2007	9
NIH RESEARCH CAREER AWARDS FY 1998 - 2007	10
PARTICIPATION RATES FOR WOMEN IN SELECTED RESEARCH TRAINING AND CAREER DEVELOPMENT ACTIVITIES FY 1998 - 2008 (TO DATE)	11
NUMBER OF RESEARCH GRANT AWARDS TO WOMEN AND MEN AND PERCENTAGE OF AWARDS TO WOMEN FY 1998 - 2007	12
AVERAGE SIZE OF RESEARCH GRANT AWARDS TO WOMEN AND MEN ALONG WITH WOMEN'S GRANTS EXPRESSED AS A PERCENTAGE OF THE SIZE OF MEN'S GRANTS FY 1998-2007	13
NIH COMPETING AND NON-COMPETING RESEARCH GRANT AWARDS, FY 1998 - 2007	14
AVERAGE SIZE OF GRANTS TO WOMEN COMPARED TO MEN BY BUDGET CATEGORY FY 2007	15
NIH RESEARCH GRANTS BY BUDGET CATEGORY FY 2007	16
NUMBER OF R01 EQUIVALENT AWARDS TO WOMEN AND MEN WITH PERCENTAGE OF AWARDS TO WOMEN FY 1998 - 2007	17





SLIDE TITLE	SLIDE NUMBER
AVERAGE SIZE OF R01 EQUIVALENT GRANTS (R01, R29, R37) AWARDS TO WOMEN AND MEN ALONG WITH WOMEN'S GRANTS EXPRESSED AS A PERCENTAGE OF THE SIZE OF MEN'S GRANTS FY 1998 - 2007	18
NIH COMPETING AND NON-COMPETING R01 EQUIVALENT AWARDS FY 1998 - 2007	19
SUCCESS RATES OF MALE VS. FEMALE APPLICANTS ON NEW (TYPE 1) AND CONTINUING (TYPE 2) NIH R01 APPLICATIONS FY 1998 - 2007	20
SUCCESS RATE ON NIH COMPETING R01 APPLICATIONS BY GENDER OF PRINCIPAL INVESTIGATOR FY 1998-2007	21
HOW HAS THE PARTICIPATION OF WOMEN AS PRINCIPAL INVESTIGATORS ON NIH RESEARCH PROJECT GRANTS (RPGS) AND AS REVIEWERS CHANGED OVER TIME?	22
AMOUNT OF AVERAGE REQUESTED (TOTAL) COSTS OF RESEARCH PROJECT GRANTS, FY 1998 - 2007	23
AMOUNTS REQUESTED COMPARED TO AMOUNTS AWARDS FOR NIH COMPETING RESEARCH PROJECT GRANTS BY GENDER OF THE PRINCIPAL INVESTIGATOR, FY 1998 - 2007	24
SUCCESS RATES FOR WOMEN AND MEN ON COMPETING RPG APPLICATIONS FY 1985 - 2007	25
SUCCESS RATES FOR WOMEN AND MEN ON NIH COMPETING RESEARCH PROJECT GRANT APPLICATIONS FY 1998 - 2007	26
FEMALE INVESTIGATORS AS A PERCENT OF TOTAL AWARDS BY AWARD MECHANISM FY 1998-2007	27
PERCENTAGE OF WOMEN ON STANDING CSR PEER REVIEW PANELS COMPARED TO THE PERCENTAGE OF WOMEN AS APPLICANTS FOR NIH R01 GRANTS FY 2000-2006	28

