



Department of Energy

Official File Copy

Bonneville Power Administration
P.O. Box 3621
Portland, Oregon 97208-3621

ENVIRONMENT, FISH AND WILDLIFE

November 4 2011

In reply refer to: KEWM-4

To: Parties Interested in the Proposed South Eugene Meadows Conservation Easement Acquisition

Bonneville Power Administration (BPA) is proposing to fund The City of Eugene to conserve approximately 193.7-acres of land in Lane County, Oregon, near the city of Eugene. BPA is sending this letter to inform nearby residents and other interested parties of this proposed conservation easement.

BPA is proposing to fund the acquisition of this conservation easement as part of ongoing efforts to mitigate for the impacts of the construction and operation of federal flood control facilities in the Willamette River Basin. The property would provide long-lasting benefits as part of a growing network of conservation lands in the Willamette Valley by allowing wildlife access to native upland prairie, oak woodland and Douglas fir habitats. Numerous wildlife species use this habitat, including Kincaid's lupine, listed under the Endangered Species Act. The acquisition would prevent habitat conversion and secure rights to restore and maintain habitat that benefits 25 focal species. Prior to any actions, The City of Eugene would develop a management plan in coordination with and approved by BPA, Oregon Watershed Enhancement Board, and Oregon Department of Fish and Wildlife prior to implementation.

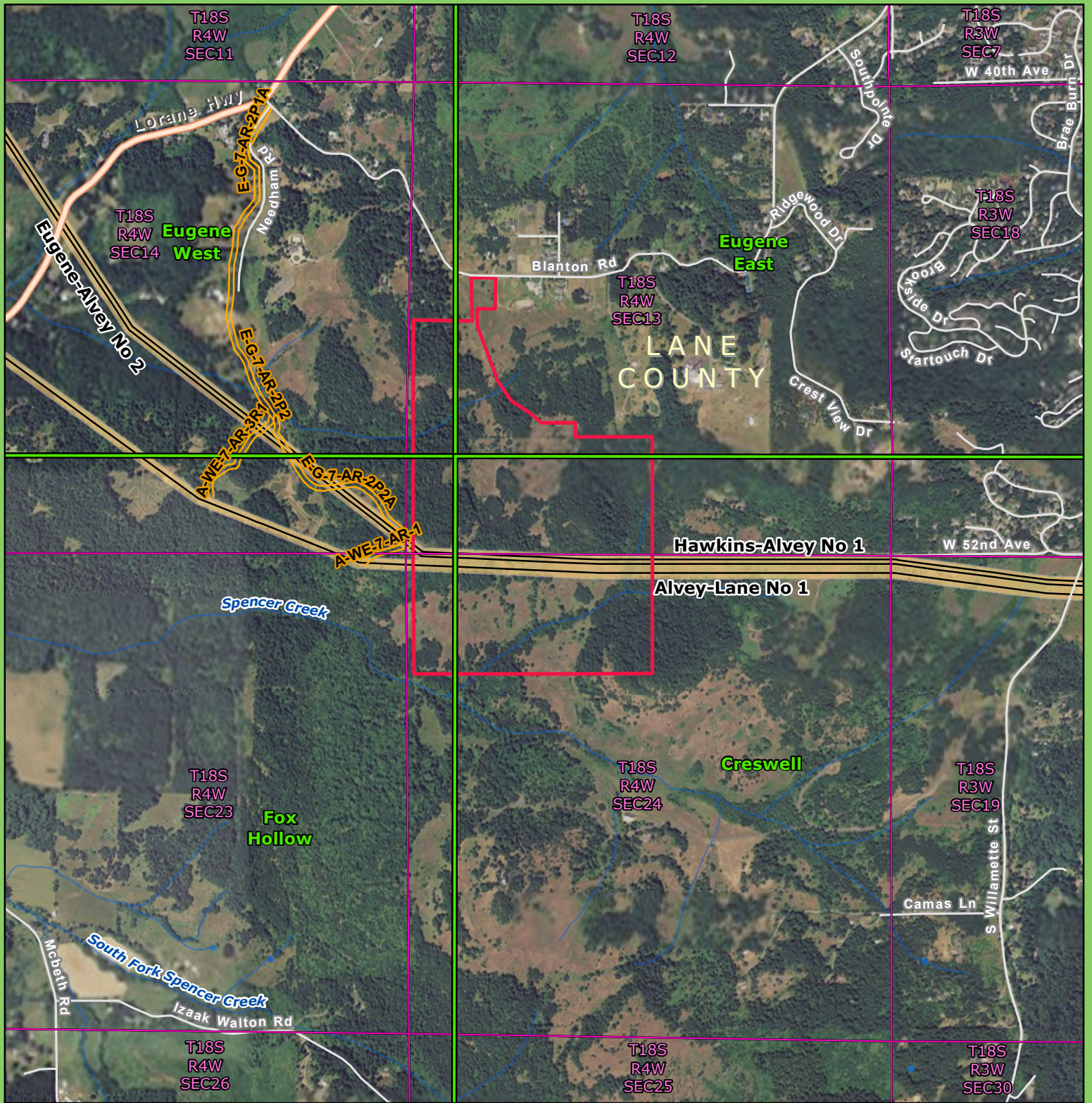
Enclosed you will find a map that describes the location and the purpose and benefits of this conservation easement purchase. BPA has prepared an environmental clearance memo and environmental checklist documenting that funding the conservation easement on this property is categorically excluded under the National Environmental Policy Act, and that further environmental review of this funding action is therefore not required. This categorical exclusion was approved on November 3, 2011 and has been posted on BPA's website at: http://www.efw.bpa.gov/environmental_services/categoricalexclusions.aspx

If you have any questions regarding purchase of this conservation easement, please feel free to contact Dorie Welch, Bonneville Power Administration, at (503) 230-5479 or dwwelch@bpa.gov. You can also call toll free (800) 622-4519; be sure to reference the "South Eugene Meadows conservation easement" in your message.

Sincerely,

/s/ Israel Duran, November 4, 2011
Israel Duran
Environmental Protection Specialist – KEC-4

Enclosure:
Map



Public Notification
South Eugene Meadows Land Acquisition - 193.7 Acres
 Eugene West, Eugene East, Fox Hollow and Creswell 24k Quadrangles.

| | |
|------------------|-------------------------------|
| Subject Property | Township/Range/Section (PLSS) |
| BPA Right-of-Way | USGS 24K Quad Perimeters |
| BPA Access Road | BPA Transmission Line |

1 inch = 1,500 feet

Map Area
OREGON

October 14, 2011