



Department of Energy

Bonneville Power Administration
P.O. Box 3621
Portland Oregon 97208-3621

ENVIRONMENT, FISH AND WILDLIFE

August 16, 2012

In reply refer to: KEC-4

To: Parties Interested in the Proposed Rattlesnake Butte Conservation Easement

The Bonneville Power Administration (BPA), in partnership with the Oregon Watershed Enhancement Board (OWEB), The Nature Conservancy (the Conservancy), and The Confederated Tribes of Grand Ronde (the Tribe) are proposing to purchase a conservation easement over 97-acres near Junction City in Lane County, Oregon for the purposes of wildlife habitat conservation. When the transaction is complete the Tribe will own and manage the land. The BPA and OWEB will receive conservation easements on the property to ensure that the habitat values are protected forever. This letter is being sent to inform nearby residents and other interested parties of this pending land acquisition.

By funding this easement BPA partially fulfills commitments made in the 2010 "Willamette River Basin Memorandum of Agreement Regarding Wildlife Habitat Protection and Enhancement between the State of Oregon and the Bonneville Power Administration". This is part of ongoing efforts to mitigate for the impacts of the construction and operation of federal flood control facilities in the Willamette River Basin. Protecting this property will provide long-lasting wildlife benefits as part of a growing network of conservation lands in the Willamette Valley that allow wildlife access to native upland prairie, oak woodland, and Douglas fir habitats. Rattlesnake Butte is part of a northwest-southeast oriented basalt ridge. The south facing rocky slopes supports populations of virtually every reptile native to the Willamette Valley including one of very few remnant populations of the western rattlesnake from the Willamette Valley. The extremely shallow soils over basalt bedrock also supports Lemmon's needlegrass, silver moss, Roemer's fescue dry grassland, and Oregon white oak savanna plant communities once widespread in the Willamette Valley and now restricted to a very few areas. This property also supports a number of plant communities that are uncommon to the Willamette Valley including Hall's violet, prairie lupine, and turkey mullein, along with a host of other typical Willamette Valley prairie and savanna wildflowers.

Purchasing the easement will prevent the conversion of habitat to other land uses, ensuring long term conservation benefits. When the transaction is complete the Tribe will own the property and will develop a management plan in coordination with BPA, OWEB, and the Oregon Department of Fish and Wildlife. The Tribe will give the public an opportunity to review and comment on the plan. The Oregon Department of Fish and Wildlife, OWEB, and BPA will review and must approve the plan before it can be implemented. It is anticipated that the Tribe will restore and

enhance habitat on the property and provide long-term stewardship of the land according to the actions defined in the management plan. The BPA will conduct further environmental review before funding additional land management activities outside of the purchase of the conservation easement.

Enclosed you will find a map that describes the location and the purpose and benefits of this conservation easement purchase. The BPA has prepared an environmental clearance memo and environmental checklist documenting that funding the conservation easement on this property is categorically excluded under the National Environmental Policy Act and that further environmental review of this funding action is therefore not required. This categorical exclusion was approved on August 13, 2012 and has been posted on BPA's website at: http://www.efw.bpa.gov/environmental_services/categorialexclusions.aspx

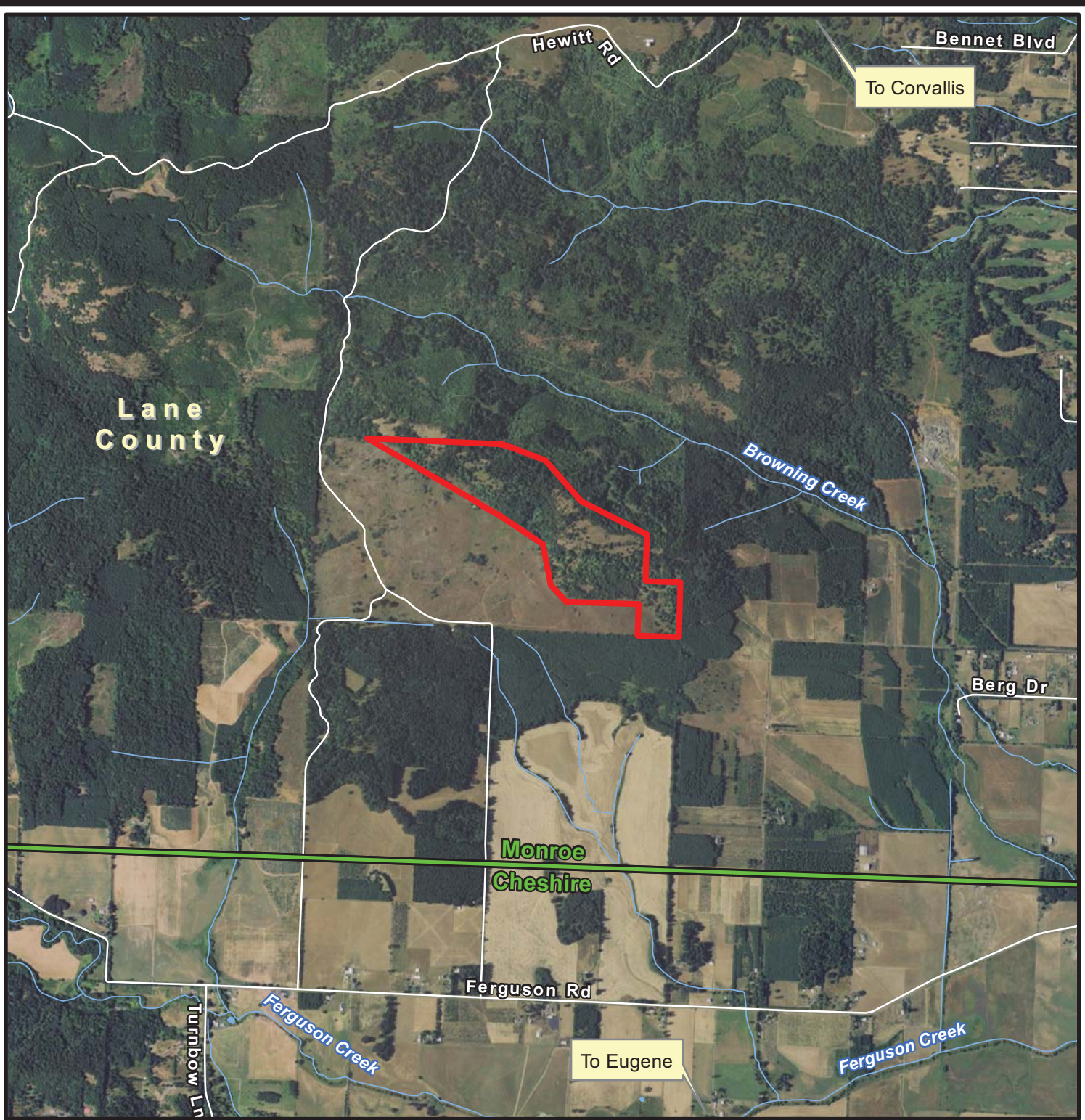
If you have any questions regarding purchase of this conservation easement please feel free to contact Dorie Welch with BPA at (503) 230-5479 or dwwelch@bpa.gov. You can also call toll free (800) 622-4519; be sure to reference the "Rattlesnake Butte Conservation Easement" in your message.

Sincerely,



A handwritten signature in blue ink that reads "Israel Duran". The signature is fluid and cursive, with the first name "Israel" being larger and more prominent than the last name "Duran".

Israel Duran
Environmental Protection Specialist – KEC-4

Enclosure:
Map



Rattlesnake Butte
 Monroe Quadrangle
 (97 Acres)

-  Subject Property
-  Quad Name and Boundary



August 2, 2012



OREGON