



Department of Energy

Bonneville Power Administration
P.O. Box 3621
Portland, Oregon 97208-3621

ENVIRONMENT, FISH AND WILDLIFE

August 30, 2012

In reply refer to: KEC-4

To: Parties Interested in the Proposed Railroad Island Land Acquisition under the 2010 Willamette Wildlife Habitat Agreement

The Bonneville Power Administration (BPA) is proposing to provide funds to The McKenzie River Trust (the Trust) to purchase the 63-acre Railroad Island property near Junction City in Lane County, Oregon for the purposes of fish habitat conservation. The Trust will own and manage the land, and BPA will receive a conservation easement on the property to ensure that the habitat values are protected forever. This letter is being sent to inform nearby residents and other interested parties of this pending land acquisition.

By funding this easement BPA partially fulfills commitments made in the 2010 "Willamette River Basin Memorandum of Agreement Regarding Wildlife Habitat Protection and Enhancement between the State of Oregon and the Bonneville Power Administration". This is part of ongoing efforts to mitigate for the impacts to fish and wildlife of the construction and operation of federal flood control facilities in the Willamette River Basin. Placing this property in a conservation easement will provide long-lasting wildlife benefits as part of a growing network of conservation lands in the Willamette Valley by preventing the conversion of fish and wildlife habitat to other land uses. Railroad Island is a dynamic river island composed of floodplain forest, riparian willow shrub habitat, gravel bar, and backwater sloughs. These habitats support a variety of species of concern (as identified by the Oregon Conservation Strategy), including migratory birds, Western pond turtles, red-legged frogs, and Upper Willamette Chinook salmon. The dynamic river conditions that contributed to the formation of these important habitats are increasingly rare in the Willamette River. The acquisition of this island ensures that this area of the river continues to serve as an important riparian and aquatic refuge for both juvenile and adult native fish and wildlife on the Willamette in perpetuity.

When the transaction is complete the Trust will own the property and will develop a management plan in coordination with BPA and the Oregon Department of Fish and Wildlife (ODFW). The Trust intends to manage this land to provide habitat for fish and wildlife. The Trust will give the public an opportunity to review and comment on the plan. BPA and ODFW must review and approve the plan before it can be implemented. It is anticipated that the Trust will restore and enhance habitat on the property and provide long-term stewardship of the land according to the actions defined in the management plan. BPA will conduct further

environmental review before funding additional land management activities outside of the purchase of the conservation easement.

Enclosed you will find a map that describes the location of this conservation easement purchase. The BPA has prepared an environmental clearance memo and environmental checklist documenting that funding the conservation easement on this property is categorically excluded under the National Environmental Policy Act and that further environmental review of this funding action is therefore not required. This categorical exclusion was approved on August 27, 2012 and has been posted on BPA's website at:
http://www.efw.bpa.gov/environmental_services/categorical_exclusions.aspx

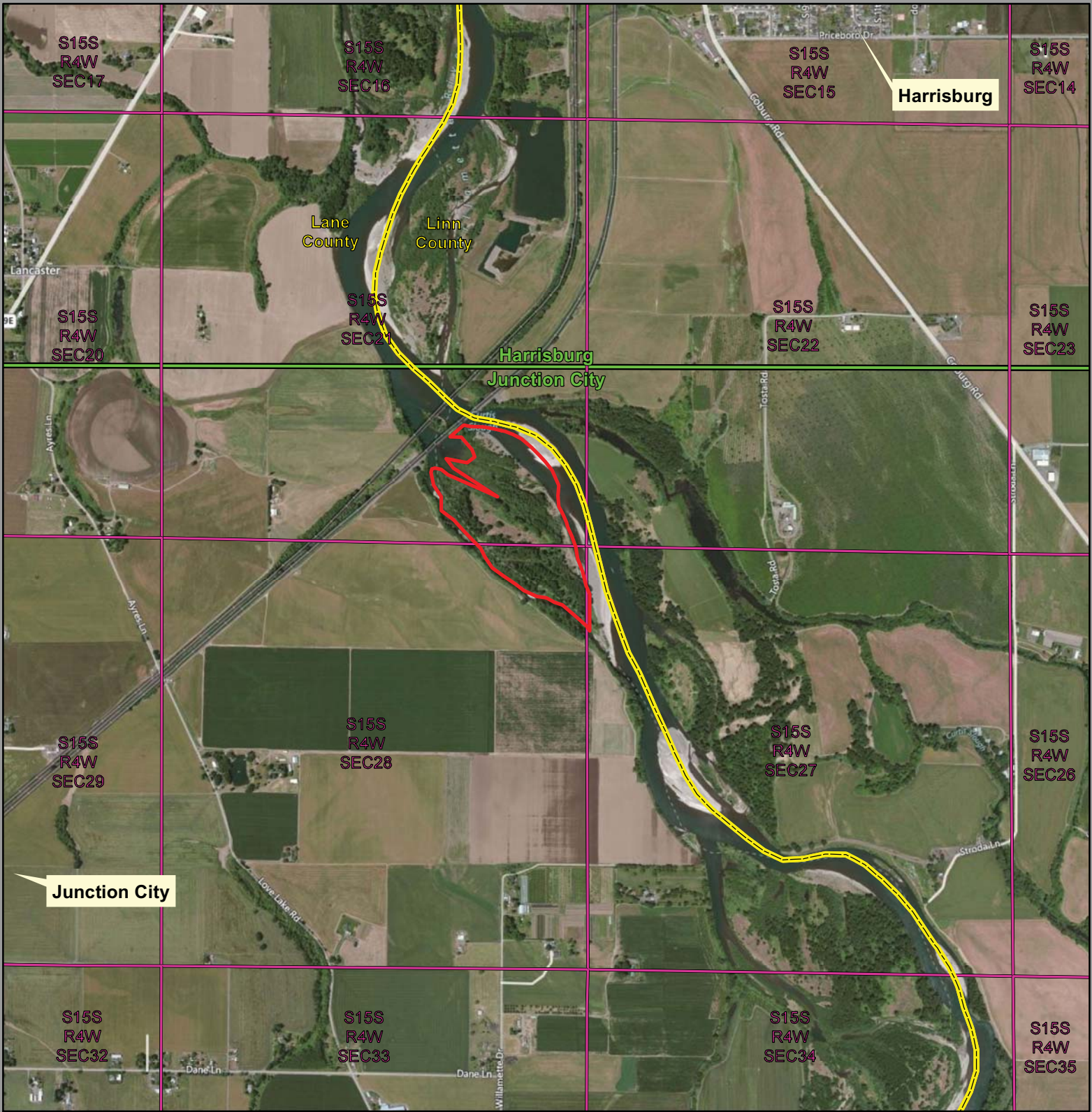
If you have any questions regarding purchase of this conservation easement please feel free to contact Dorie Welch with BPA at (503) 230-5479 or dwwelch@bpa.gov. You can also call BPA's toll free number (800) 622-4519; be sure to reference the "Railroad Island Conservation Easement" in your message.

Sincerely,

/s/ Israel Duran 8-31-2012





Israel Duran
Environmental Protection Specialist – KEC-4

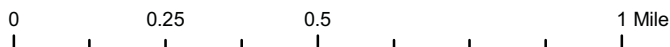
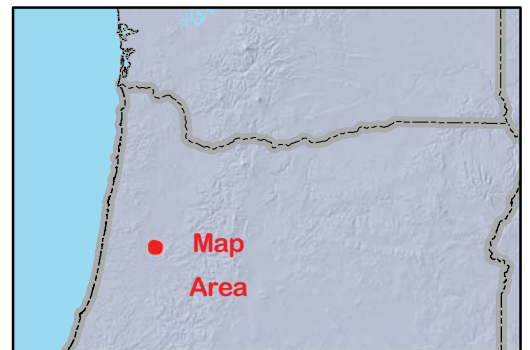
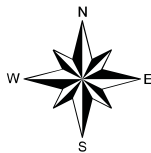
Enclosure:
Map



RAILROAD ISLAND

LANE COUNTY, OR
(63 ACRES)

-  Subject Property
-  County Boundary
-  TRS Boundary
-  Quad Name and Boundary



8/23/2012