



Department of Energy

Official File

Bonneville Power Administration
P.O. Box 3621
Portland, Oregon 97208-3621

ENVIRONMENT, FISH AND WILDLIFE

September 7, 2012

In reply refer to: KEC-4

To: People Interested in the Pole Creek Land Acquisitions for Wildlife Habitat Mitigation, Owyhee County, Idaho.

The Bonneville Power Administration (BPA) is proposing to fund the purchase of five non-contiguous parcels of land totaling approximately 1660 acres in Owyhee County, Idaho. The Shoshone-Paiute Tribes of the Duck Valley Indian Reservation will own and manage the land and BPA would receive conservation easements to ensure that the habitat values on the properties will always be protected. The properties are expected to be purchased in fall 2012. BPA is sending this letter to inform nearby residents and other interested parties of these proposed land purchases.

The funding would be provided as part of BPA's ongoing efforts to protect, restore and enhance wildlife habitat as partial mitigation for the construction and operation of Anderson Ranch Dam on the South Fork of the Boise River. Purchasing and protecting the habitat on these properties is important because they contain springs and areas of forage that support antelope, mule deer and seasonal populations of elk. This area also supports unique vegetation types that sustain populations of threatened species such as greater sage grouse, pygmy rabbit, and spotted frog.

Enclosed you will find map describing the land transactions. BPA has prepared a memo and environmental checklist documenting that funding the purchase of the properties would be categorically excluded under the National Environmental Policy Act, and that further environmental review of this funding action is not required. This categorical exclusion was approved on September 4, 2012 and is posted on BPA's website at:

http://www.efw.bpa.gov/environmental_services/categorical_exclusions.aspx

For More Information

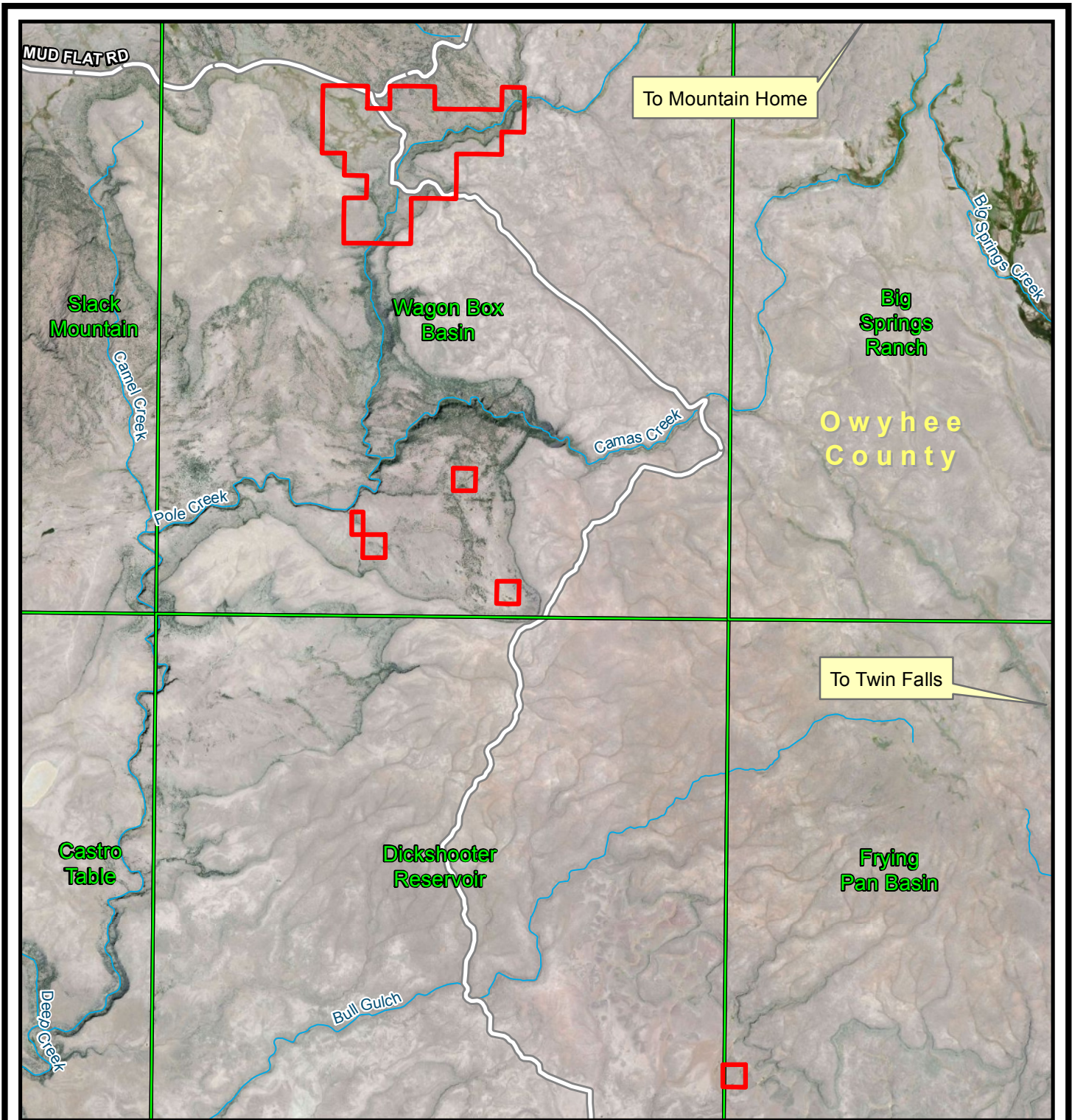
If you have questions about this proposal or would like additional information, contact Sandra Fife BPA project manager, at 503-230-3678 or safife@bpa.gov. You can also call toll free 800-622-4519. Additional information is also available online at www.efw.bpa.gov.

Sincerely,

/s/ Jenna Peterson, September 7, 2012


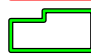
Jenna Peterson
Environmental Protection Specialist – KEC-4

Enclosure:
Vicinity Map



Public Notification Pole Creek Acquisition
Wagon Box Basin, Dickshooter Reservoir, and Frying Pan Basin Quadrangles
(1660 Acres)



-  Subject Property
-  Quad Name and Boundary

