



Department of Energy

Official File Copy

Bonneville Power Administration
P.O. Box 3621
Portland, Oregon 97208-3621

ENVIRONMENT, FISH AND WILDLIFE

September 7, 2011

In reply refer to: Cecilia Brown – KEWM-4

**To: People Interested in the Proposed Diamond B Group Conservation Easement
Acquisition under the Federal Columbia River Power System Mitigation Program**

Bonneville Power Administration (BPA) is providing funds to Montana Fish, Wildlife and Parks (MFWP) to conserve approximately 192 acres of land in Flathead County, Montana, near the city of Kalispell. BPA is sending this letter to inform nearby residents and other interested parties of this proposed conservation easement.

BPA is funding the acquisition of this conservation easement as part of ongoing efforts to mitigate for the impacts of the Hungry Horse hydroelectric facility on the South Fork of the Flathead River. The property includes 2.5 km of riparian and wetland habitat along the Flathead River. Habitat protected by this land acquisition will primarily benefit bull trout and westslope cutthroat trout, but will also benefit native wildlife. Prior to any actions, MFWP will develop a management plan that will be approved by BPA.

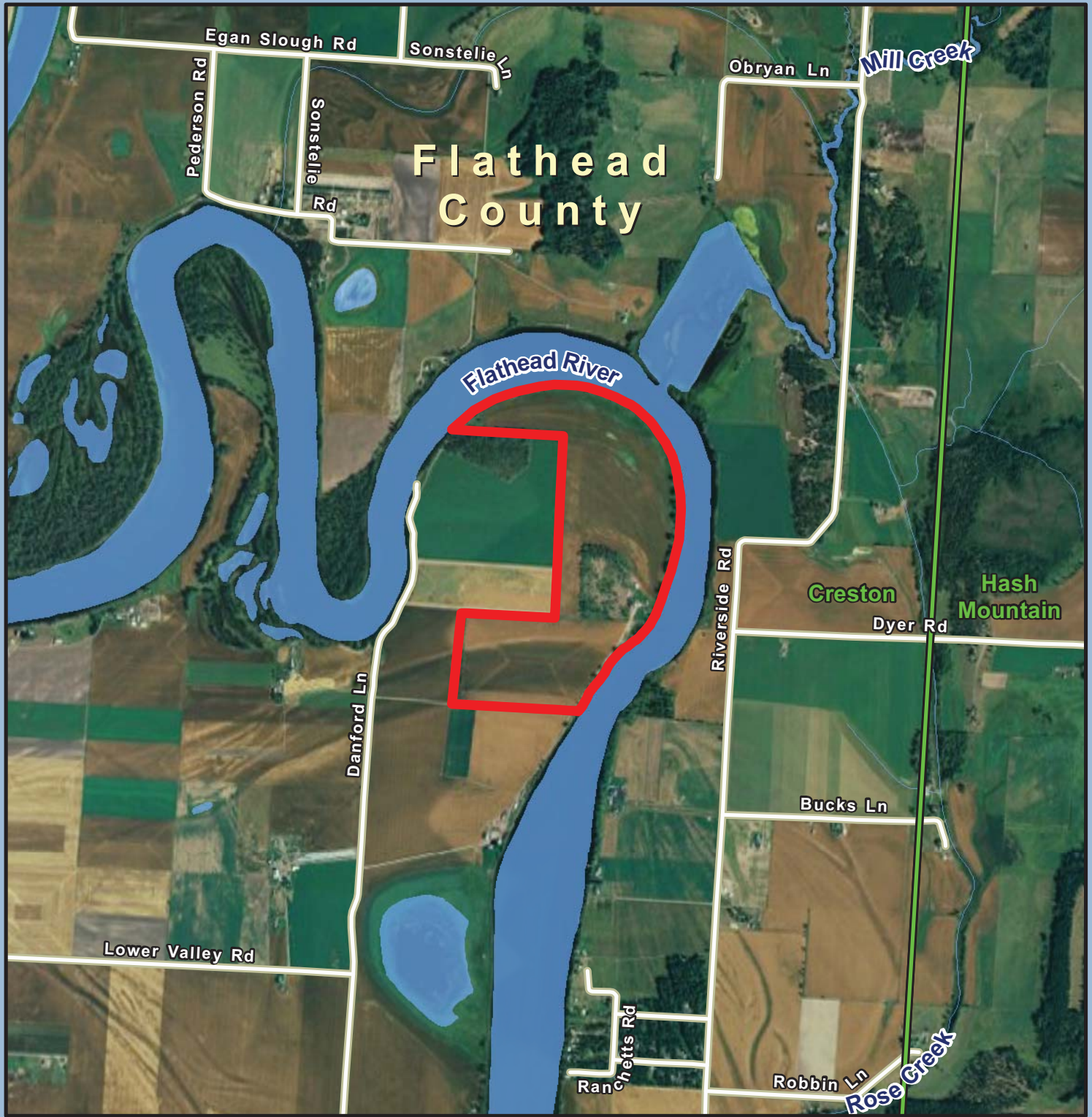
Enclosed you will find a map that details the boundaries of the conservation easement. BPA has prepared a memo and environmental checklist documenting that funding the conservation easement on this property is categorically excluded under the National Environmental Policy Act, and that further environmental review of this funding action is therefore not required. This categorical exclusion was approved on August 17, 2011 and has been posted on BPA's website at: http://www.efw.bpa.gov/environmental_services/categoricalexclusions.aspx

If you have any questions regarding purchase of this conservation easement, please feel free to contact Cecilia Brown, BPA Project Manager, at (503) 230-3462, or ckbrown@bpa.gov. You can also call toll free (800) 622-4519; be sure to reference the "Diamond B Group conservation easement" in your message.



Sincerely,

/s/ Hannah Dondy-Kaplan, September 7, 2011
Hannah Dondy-Kaplan
Environmental Protection Specialist – KEC-4

Enclosure:
Map



Diamond B Conservation Easement
Creston Quadrangle
(200 Acres)

-  Subject Property
-  Quad Name and Boundary

