



Department of Energy

Bonneville Power Administration
P.O. Box 3621
Portland, Oregon 97208-3621

ENVIRONMENT, FISH AND WILDLIFE

January 31, 2013

In reply refer to: KEC-4

To: Parties Interested in the Proposed Coyote Creek Land Acquisition under the 2010 Willamette Wildlife Habitat Agreement

The Bonneville Power Administration (BPA) is proposing to provide funds to The Nature Conservancy to purchase the 310-acre Coyote Creek property located west of the City of Eugene in Lane County, Oregon. The Coyote Creek property is surrounded by the 59,061-acre West Eugene Wetlands/Spencer Creek Conservation Opportunity Area (COA) and the five acre Fern Ridge Wildlife Area COA. After The Nature Conservancy has acquired the property they will grant BPA a conservation easement. The Nature Conservancy intends to give the property to the Oregon Department of Fish and Wildlife (ODFW) who will own and manage it. BPA's conservation easement will remain in place even when the ownership has changed and ensures that the habitat values are protected forever. This letter is being sent to inform nearby residents and other parties of this proposed land purchase, outline our process, and describe where to find further information.

Funding this land purchase will partially fulfill commitments made by BPA in the 2010 "Willamette River Basin Memorandum of Agreement Regarding Wildlife Habitat Protection and Enhancement between the State of Oregon and the Bonneville Power Administration". This is part of ongoing efforts to mitigate for the impacts to fish and wildlife from the construction and operation of federal flood control and hydroelectric facilities in the Willamette River Basin. Conserving this property provides long-lasting wildlife benefits. When the transaction is complete, this property will become one of a growing network of conservation lands in the Willamette Valley providing important and long lasting fish and wildlife habitat benefits. Conserving habitat on the Coyote Creek property also partially fulfills BPA's habitat restoration and protection responsibilities under the Willamette Project Biological Opinions (NMFS 2008, USFWS 2008).

The Coyote Creek property is located within the Coyote Creek drainage of the U.S. Bureau of Land Management's West Eugene Wetlands Area of Critical of Environmental Concern. It contains important riparian and wetland habitats and provides opportunities for native wet prairie restoration and water fowl foraging. This property also provides additional wildlife habitat benefits by supporting connectivity between the Fern Ridge Wildlife Management Area and the City of Eugene's Coyote Prairie mitigation bank. Together, the 64,000-acre COAs supports valley bottom wetland, grassland, and riparian habitats with the highest remaining concentration

of rare Willamette Valley at-risk endemic species, including the federally Endangered Bradshaw's lomatium (*Lomatium bradshawii*), Willamette daisy (*Erigeron decumbens* var. *decumbens*), Fender's blue butterfly (*Icaricia icariodes fenderi*), and the federally Threatened Kincaid's lupine (*Lupinus sulphureus* ssp. *kincaidii*). In addition, there are 13 Federal Species of Concern (four plant and nine animal species).

Enclosed you will find a map of the Coyote Creek property. BPA has prepared an environmental clearance memo and environmental checklist documenting that funding the purchase of this property is categorically excluded under the National Environmental Policy Act and that further environmental review of this funding action is therefore not required. This categorical exclusion was approved on January 23, 2013 and has been posted on BPA's website at: http://www.efw.bpa.gov/environmental_services/categorical_exclusions.aspx

ODFW, in coordination with BPA, will develop a management plan for the property and will provide the public an opportunity to review and comment on the plan. BPA must review and approve the plan before it can be implemented. It is anticipated that the ODFW will restore and enhance habitat on the property and provide long-term stewardship of the land according to the actions defined in the management plan. Prior to funding additional land management activities on the property BPA will conduct further environmental review.

If you have any questions regarding purchase of this conservation easement please feel free to contact Dorie Welch with BPA at (503) 230-5479 or dwwelch@bpa.gov. You can also call BPA's toll free number (800) 622-4519; be sure to reference the "Coyote Creek Conservation Easement" in your message.

Sincerely,

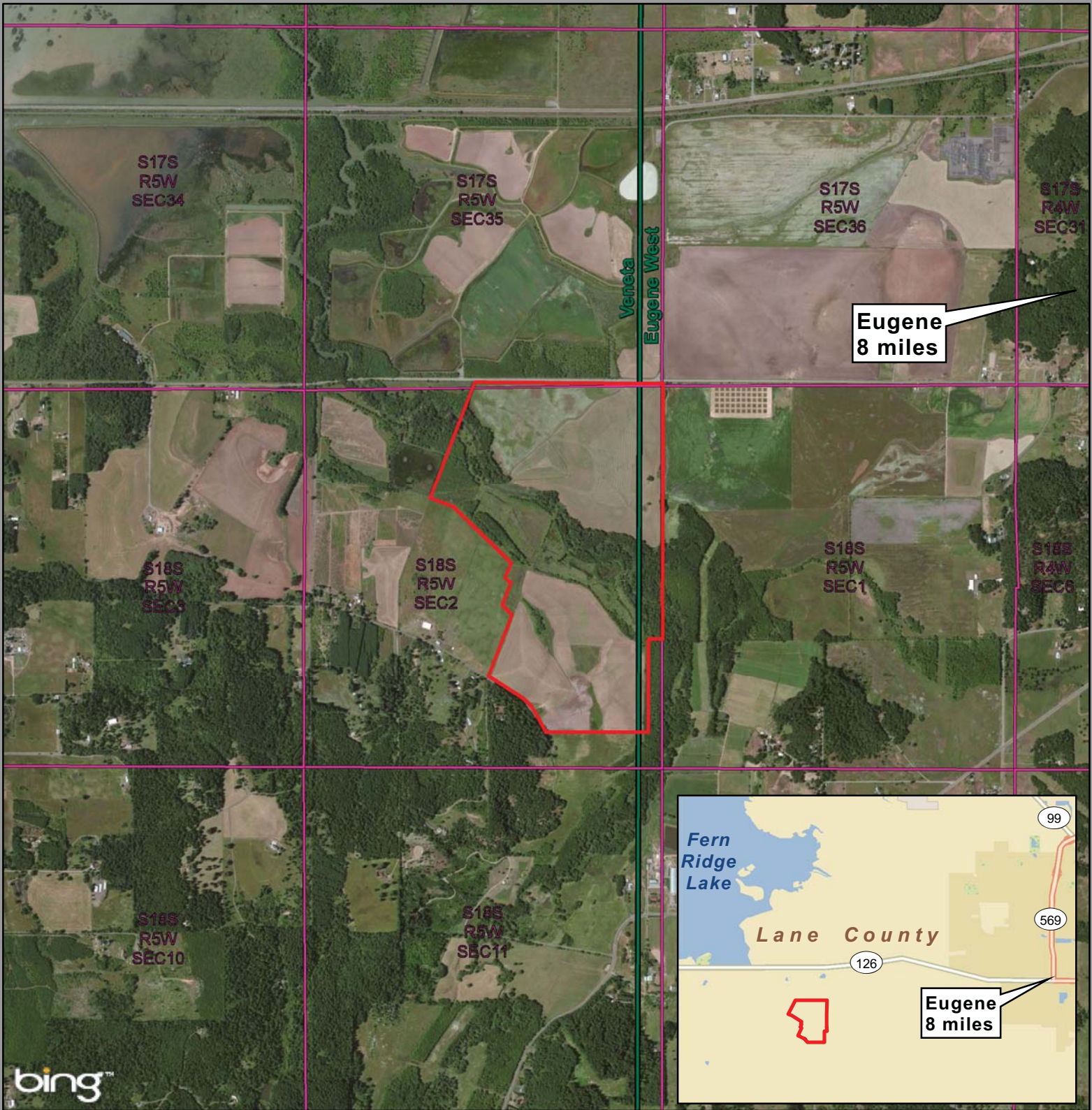
/s/ Israel Duran, January 31, 2013

Israel Duran


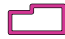

Environmental Protection Specialist – KEC-4

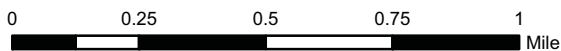
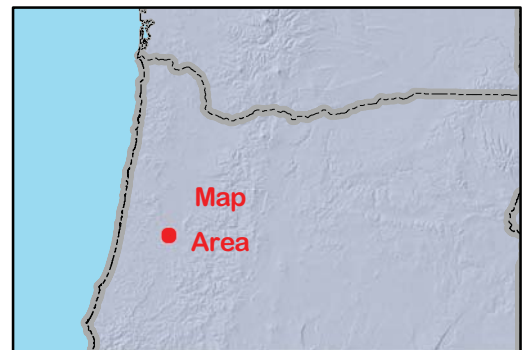
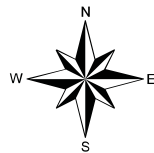
Enclosure:

Map



COYOTE CREEK PUBLIC NOTIFICATION
 LANE COUNTY, OR
 (310 ACRES)

-  Subject Property
-  TRS Boundary
-  Quad Name and Boundary



1/16/2013