



## Department of Energy

Bonneville Power Administration  
P.O. Box 3621  
Portland, Oregon 97208-3621

ENVIRONMENT, FISH AND WILDLIFE

November 28, 2011

In reply refer to: KEC-4

### **To: Parties Interested in the Proposed Horseshoe Lake Conservation Easement Acquisition**

Bonneville Power Administration (BPA), in partnership with the Oregon Watershed Enhancement Board (OWEB), is proposing to fund the purchase of two conservation easements and one fee-title acquisition on approximately 175 acres near Albany in Linn County, Oregon for the purposes of fish and wildlife habitat conservation. When the purchases are complete, the Greenbelt Land Trust (GLT) will hold the conservation easements, and own the property for which fee title was acquired. GLT will manage the properties as a single unit. Bonneville Power Administration and OWEB will hold conservation easement interests on the properties to ensure that the habitat values are protected in perpetuity. This letter is being sent to inform nearby residents and other interested parties of this proposed conservation easement.

By funding this purchase, BPA partially fulfills commitments made in the 2010 "Willamette River Basin Memorandum of Agreement Regarding Wildlife Habitat Protection and Enhancement between the State of Oregon and the Bonneville Power Administration", which is a part of ongoing efforts to mitigate for the impacts of the construction and operation of federal flood control facilities in the Willamette River Basin. The 175.06 acre property is adjacent to the Willamette River and is partly within the 100-year floodplain. It includes a major remnant side channel called Horseshoe Lake, which contains water year-round. The property will provide long-lasting habitat benefits as part of a growing network of conservation lands in the Willamette Valley. These conservation lands allow wildlife access to native wetland, riparian, and savanna habitats, and extensive bottomland hardwood forests. The numerous wildlife species that use these habitats include spring Chinook salmon, which are listed under the Endangered Species Act.

The acquisition prevents the conversion of fish and wildlife habitat on this property to other land uses, ensuring long term benefits for many focal fish and wildlife species. When the properties/easements have been acquired, GLT will develop a management plan in coordination with BPA, OWEB, and the Oregon Department of Fish and Wildlife.

Greenbelt Land Trust will give the public an opportunity to review and comment on the plan. The Oregon Department of Fish and Wildlife, OWEB, and BPA will review and must approve the plan before it can be implemented. It is anticipated that GLT will restore and enhance habitat and provide long-term stewardship of the land according to the actions defined in the management plan. BPA will conduct further environmental review before funding additional land management activities outside of the purchase of the conservation easement.

Enclosed you will find a map that describes the location and the purpose and benefits of this conservation easement purchase. BPA has prepared an environmental clearance memo and environmental checklist documenting that funding the conservation easement on this property is categorically excluded under the

National Environmental Policy Act, and that further environmental review of this funding action is therefore not required. This categorical exclusion was approved on November 3, 2011 and has been posted on BPA's website at: [http://www.efw.bpa.gov/environmental\\_services/categorialexclusions.aspx](http://www.efw.bpa.gov/environmental_services/categorialexclusions.aspx)

If you have any questions regarding purchase of this conservation easement, please feel free to contact Dorie Welch with BPA at (503) 230-5479 or [dwwelch@bpa.gov](mailto:dwwelch@bpa.gov). You can also call toll free (800) 622-4519; be sure to reference the "Horseshoe Lake conservation easement" in your message.

Sincerely,

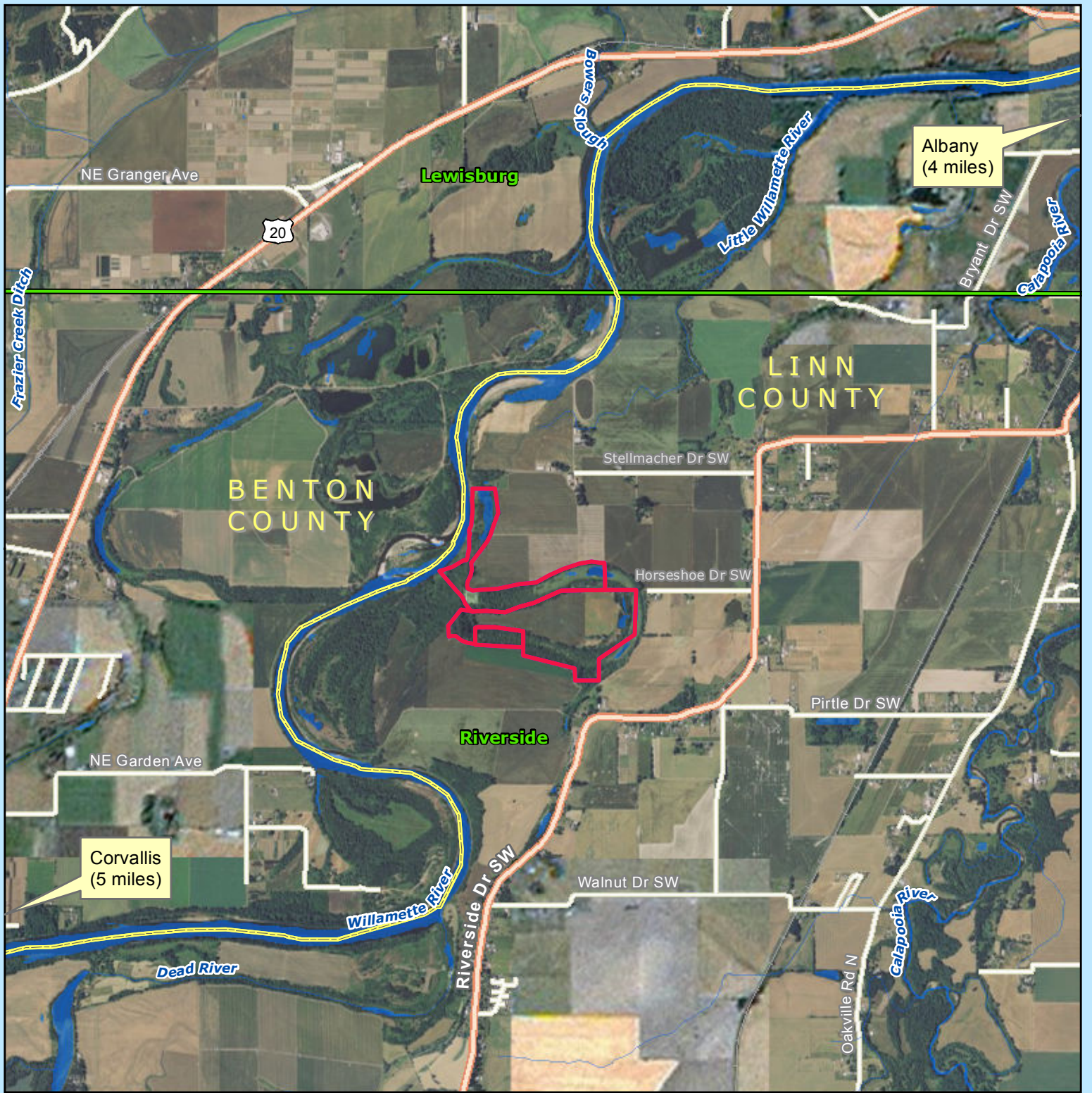
*/s/ Israel Duran – November 28, 2011*

Israel Duran

Environmental Protection Specialist – KEC-4

Enclosure:

Map



**Horseshoe Lake Acquisition**  
(175.06 Acres)

- Subject Property
- County Boundaries
- USGS 24K Quad Perimeters

1 inch = 1 miles

