



# NATIONAL REGISTRY

OF CERTIFIED  
MEDICAL EXAMINERS  
[www.nrcme.fmcsa.dot.gov](http://www.nrcme.fmcsa.dot.gov)



# **NATIONAL REGISTRY SAVES LIVES**

**Elaine Papp**  
**Chief, Medical Programs Division**



U.S. Department of Transportation  
Federal Motor Carrier Safety Administration





# What is the National Registry?

- A new regulation – published April 20, 2012
- Requires all Medical Examiners be
  - Trained, tested and certified
- Ensures
  - Medical Examiners understand FMCSA regulations and driver's role
  - Drivers are properly examined to operate commercial motor vehicles safely in interstate commerce



U.S. Department of Transportation  
Federal Motor Carrier Safety Administration





# Why do we need a National Registry?

- Increase in the number of large trucks on the highways
- Improper medical certification has contributed directly to crashes
- Too many drivers who have disqualifying medical conditions are operating commercial motor vehicles
- Make highways safer and save lives
  - reduce crashes, injuries, and fatalities involving large trucks and buses



U.S. Department of Transportation  
Federal Motor Carrier Safety Administration





# Prior to the National Registry

- Permits drivers to be examined and certified by medical examiners in any state
- Medical Examiners include:
  - Medical Doctors
  - Doctors of Osteopathy
  - Chiropractors
  - Physician Assistants
  - Advanced Practice Nurses
  - Others as defined by their scope of practice



U.S. Department of Transportation

Federal Motor Carrier Safety Administration





# Prior to the National Registry

- Medical Examiners
  - Conducts and records driver medical examination
  - Determine whether driver meets physical qualifications
  - Issue medical certificate to driver
- FMCSA has
  - No knowledge of who is doing examinations, or
  - How many examiners conduct exams



U.S. Department of Transportation  
Federal Motor Carrier Safety Administration





# Who does the National Registry Impact?

- **Medical Examiners (MEs)**
  - Medical professionals who perform U.S. Department of Transportation (DOT) physical examinations.
- **Commercial Motor Vehicle (CMV) Drivers**
  - Individuals who drive trucks, buses, or other commercial vehicles for the purpose of interstate commerce.
- **Motor Carriers and Bus Companies**
  - Companies that provide interstate commercial transportation services to individuals or other business.



- **The Motoring Public**

U.S. Department of Transportation  
Federal Motor Carrier Safety Administration





# Important Dates

- National Registry Effective
  - May 21, 2012
- Registration of Medical Examiners
  - August 20, 2012
- Compliance/Enforcement
  - As of May 21, 2014, all drivers must obtain medical certification from a healthcare professional listed on the National Registry.



U.S. Department of Transportation  
Federal Motor Carrier Safety Administration







# How to become a Certified ME

- Healthcare professionals
  - Be licensed, certified, or registered in accordance with applicable State laws and regulations to perform physical examinations
  - Complete required initial training
    - Administered by a nationally recognized medical profession accrediting organization that provides continuing medical/education units
  - Logon to National Registry website to receive a unique ID
  - Successfully pass the ME certification test
    - Within 3 years of initial training
    - Administered by an authorized, private-sector test delivery organization



U.S. Department of Transportation  
Federal Motor Carrier Safety Administration





# becoming a Testing Provider

- Apply through the National Registry web site and submit documented policies and procedures
- Meet criteria, including IT requirements
- Undergo FMCSA security site visit
- If approved, receive user login formation and register all affiliated test centers
- Download test forms and answer keys in CSV format



U.S. Department of Transportation  
Federal Motor Carrier Safety Administration





# Criteria for Testing Providers

- Have documented policies and procedures that
  - Use secure protocols to access, process, store, and transmit
    - Test items, forms, data
    - Candidate information
    - Ensure access by authorized personnel only
- Ensure testing environments are reasonably comfortable and have minimal distractions





# Criteria for Testing Providers

- Prevent opportunity for fraudulent test taking results
  - Scramble test questions
- Ensure that test provider staff interacting with examinees
  - Are trained
  - Demonstrate competency
  - Are monitored periodically for quality assurance in testing procedures
- Accommodate candidates with disabilities or impairments



U.S. Department of Transportation  
Federal Motor Carrier Safety Administration





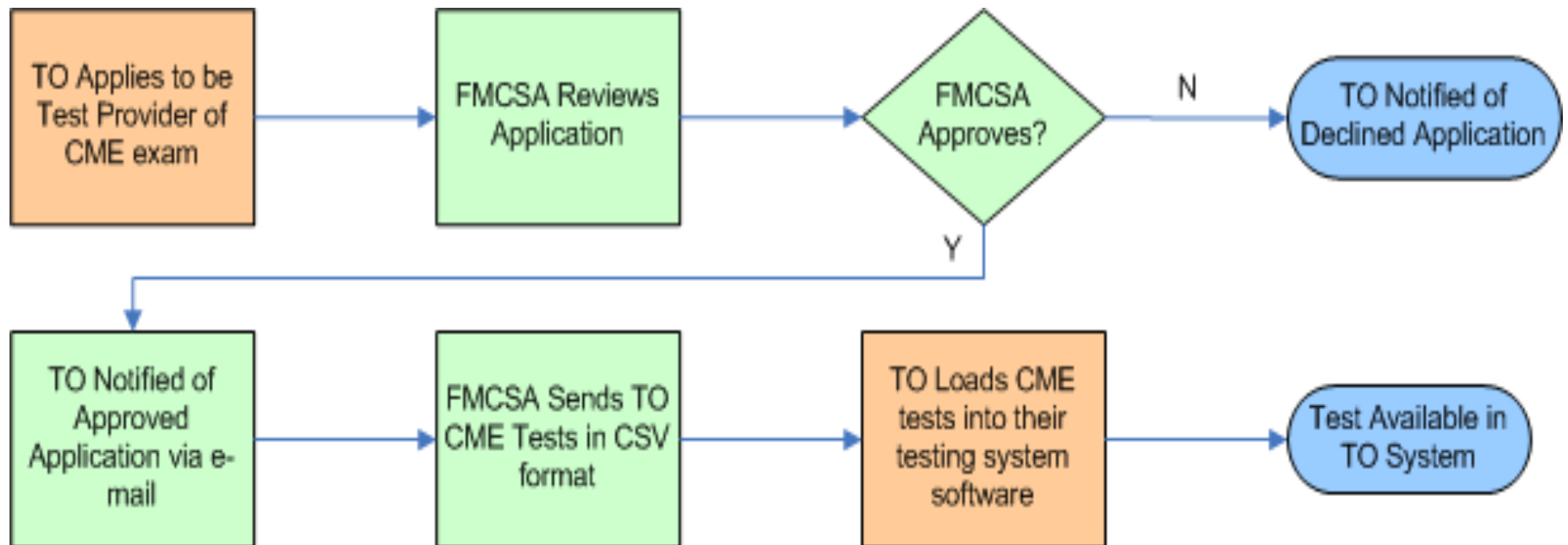
# Criteria for Online Testing

- In addition to the requirements on the previous slide, ensure that any remote, computer-based systems
  - Provide a means to authenticate the identity of the test taker
  - Provide a means for the testing organization to monitor the activity of the test taker
  - Not allow the test taker to reproduce or record the contents of the test





# Testing Provider Application Process





# Testing Provider's Role

- Verify the identification of the Medical Examiner
- Verify the Medical Examiner's medical credentials
- Verify the presence of a training certificate
- Administer appropriate test form and score
- Transmit test, results, score, and candidate information to National Registry
- Protect test, scores, and candidate information



U.S. Department of Transportation  
Federal Motor Carrier Safety Administration





# Verify Test Taker

## Verify Medical Examiner Information

- Obtain Medical Examiner's
  - Unique National Registry Number
  - Copy of medical license
  - Picture ID
  - National Registry training certificate
- Login to the National Registry system and enter Medical Examiner's National Registry number
- Verify information seen on screen







# Administrative Manual for Testing Organizations

- Provides detailed information on a variety of topics such as:
  - Standardized testing environment
  - Consistent test instructions
  - Test Taking Misconduct
  - Comments from MEs



U.S. Department of Transportation  
Federal Motor Carrier Safety Administration





# Administering the Test

- Obtain information from National Registry system regarding which test form to administer
- Administer the test form via computer
- Inform candidate of test results
- Store test results



U.S. Department of Transportation  
Federal Motor Carrier Safety Administration





# Transmitting Test Results

- Upload test results into National Registry for each Medical Examiner, including:
  - Medical Examiner National Registry ID and Name
  - Test form identification number
  - Test questions/answers
  - Test score
  - Pass/fail indicator
- National Registry provides an Interface Control Document for all data interfaces

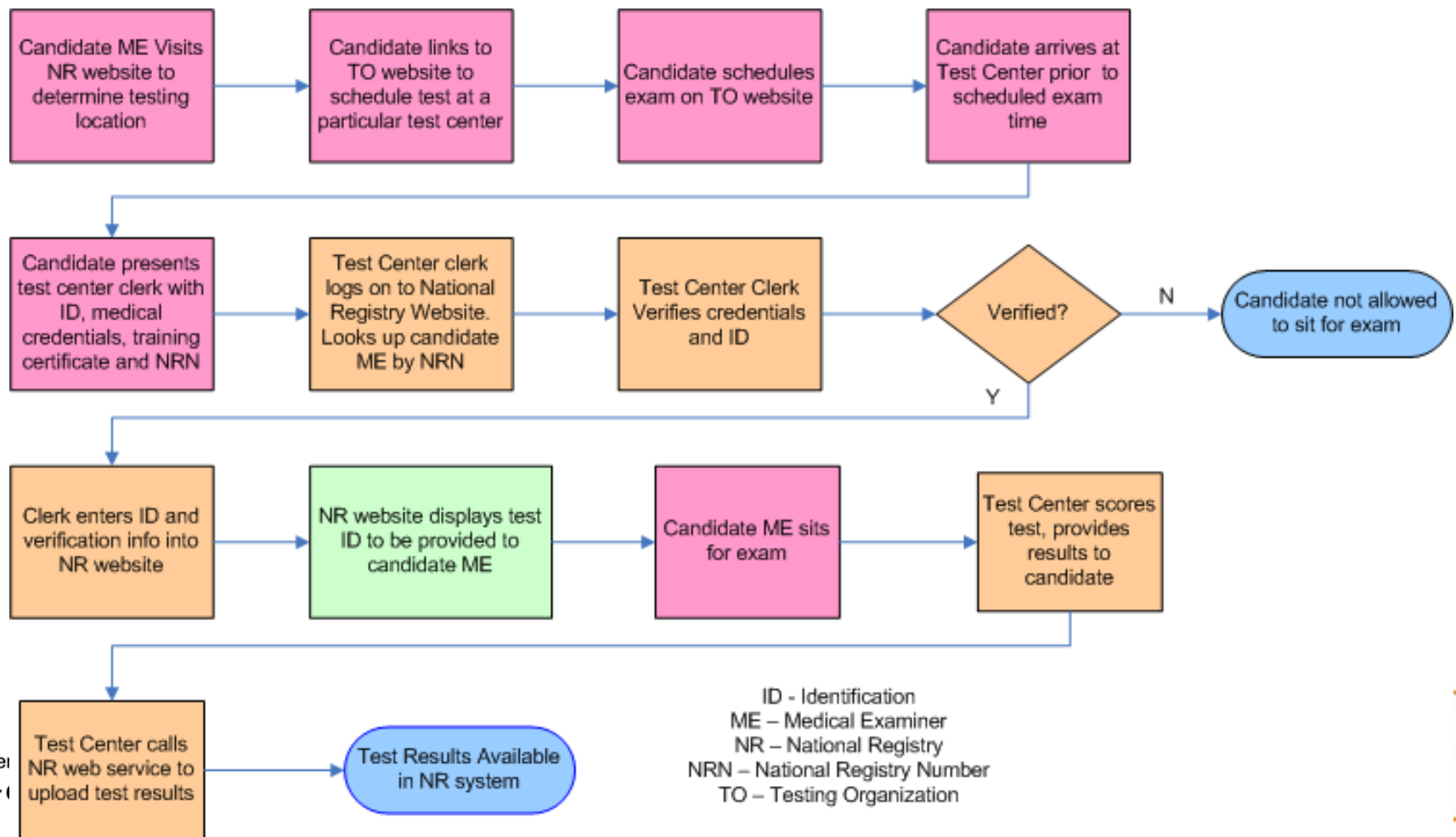


U.S. Department of Transportation  
Federal Motor Carrier Safety Administration





# Round-Trip Process from Registry to Taking the Test





# Testing Provider IT Requirements

- Internet access for National Registry communications
  - Verify Medical Examiner ID and credentials
  - Receive test forms from the National Registry
  - Transmit test results from provider to the National Registry



U.S. Department of Transportation  
Federal Motor Carrier Safety Administration





# Testing Provider IT Requirements

- Internal system must be able to:
  - Store each test form
  - Administer test
  - Score test
  - Save results (tests and answers) on each test taker for uploading to National Registry
    - Test results upload via SOAP WSDL (web service)
    - Test provider generate code to format data from the test results to the WSDL format
  - Forward to the National Registry via web service call
    - Web service description can be found at [http://nrcme.fmcsa.dot.gov/test\\_results\\_wsdl.html](http://nrcme.fmcsa.dot.gov/test_results_wsdl.html)



U.S. Department of Transportation  
Federal Motor Carrier Safety Administration





# Online Tools & Resources

- FMCSA regulations and guidance
  - 49 CFR 391, Subpart E – Physical Qualifications and Examinations
- Core Curriculum Guidance
- Sample Training
- Medical Examiner Handbook
  - FMCSA medical standards and guidance



U.S. Department of Transportation  
Federal Motor Carrier Safety Administration





# Online Tools & Resources

- Medical Examiner Candidate Handbook (*coming soon*)
  - Training requirements
  - Certification testing requirements
  - Obtaining certification
  - Maintaining certification
- Information Manual for Training Organizations (*coming soon*)
- Administrative Manual for Testing Organizations (*coming soon*)



U.S. Department of Transportation  
Federal Motor Carrier Safety Administration







# Questions

For more information, visit the National Registry System Website <http://nationalregistry.fmcsa.dot.gov>

or call (617) 494-3003

or email [contactnrcme@dot.gov](mailto:contactnrcme@dot.gov)



U.S. Department of Transportation  
Federal Motor Carrier Safety Administration

