



PURCHASING WITH SAFETY IN MIND

What to look for when buying a vehicle

DOT Vehicle Safety Hotline

888-327-4236

TDD 800-424-9153

NHTSA

1200 New Jersey Avenue SE.

Washington, DC 20590



DOT Vehicle Safety Hotline

888-327-4236

TDD 800-424-9153

NHTSA

1200 New Jersey Avenue SE.

Washington, DC 20590

PURCHASING WITH SAFETY IN MIND

THINK YOUR VEHICLE HAS A SAFETY DEFECT?

Defects in vehicle components can be deadly, and need to be recognized and corrected quickly. Information from the public helps us to determine whether a vehicle safety defect recall campaign should be started. If a vehicle safety defect exists, the manufacturer must fix it free of charge!

Visit | www.SaferCar.gov

Call | 888-327-4236

Mail | NHTSA | Office of Defects Investigation | 1200 New Jersey Avenue SE. | Washington, DC 20590

All complaints are carefully reviewed by our team of safety experts. We welcome your input.

For the latest information on crash test and rollover ratings and other important vehicle safety information, visit www.SaferCar.gov or call the hotline at 888-327-4236.

FOR MORE INFORMATION



CONTENTS

Government 5-Star Safety Ratings Program	2
Enhancements to the 5-Star Safety Ratings Program	4
Introducing the Overall Vehicle Score	7
Safety Tests.....	8
The Frontal Crash Test.....	9
The Side Barrier Crash Test.....	9
The Side Pole Crash Test	9
The Rollover Resistance Test	9
Safety Features	10
Advanced Crash Avoidance Technologies	10
Other Safety Equipment	11
Key Safety Milestones.....	12
For More Information	13

GOVERNMENT 5-STAR SAFETY RATINGS PROGRAM

The National Highway Traffic Safety Administration (NHTSA) is the agency of the U.S. Department of Transportation that conducts safety tests to determine how well new vehicles protect drivers and passengers during a crash, how well vehicles resist rollovers, and whether vehicles are equipped with technology that can help avoid crashes altogether.

Each year, NHTSA tests new passenger cars, pickup trucks, sport utility vehicles (SUVs) and vans, as well as models that were previously rated but have undergone major design changes or include new advanced safety features. These vehicles are then rated using the 5-Star Safety Ratings system. Five stars indicate the highest safety rating and one star the lowest.

Although it is impossible to determine how well vehicles protect drivers and passengers in all types of crashes, star ratings are a useful way to compare the relative safety of different vehicles. Keep in mind that the majority of injury-causing crashes that occur each year on America's roadways are either frontal or side crashes. More than one-quarter of passenger vehicle crash deaths occur in rollovers.

The results of these tests, along with information about the 5-Star Safety Ratings Program and vehicle safety features are available in this brochure. And remember: more stars mean safer cars.

Check out page 12 for a quick snapshot of NHTSA's vehicle testing and rating milestones over the years.

The latest Government 5-Star Safety Ratings and vehicle safety information can always be found at www.SaferCar.gov.



ENHANCEMENTS TO THE 5-STAR SAFETY RATINGS PROGRAM

NHTSA continued to drive the development of safer vehicles by introducing enhancements to the 5-Star Safety Ratings Program beginning with model year 2011 vehicles. Enhancements such as tougher and more stringent ratings criteria and recommended crash avoidance technologies provide incentives for manufacturers to continuously improve driver and passenger protection and educate consumers so they can make more informed buying decisions.

With new, more rigorous tests and more comprehensive crash data, NHTSA's 5-Star Safety Ratings Program enhancements encourage consumers to think "SAFER":

Side impact test
simulating a 20-mph
crash into a pole

S

Advanced
crash avoidance
technology features

A

Full injury assessment
measuring injury
to additional areas
of the body

F

Evaluating vehicles is
simple with an Overall
Vehicle Score

E

Representative crash
test dummies

R



Below are specific differences between the old and enhanced ratings system. The changes in the enhanced ratings are effective for model year 2011 vehicles and beyond.

1990-2010 RATINGS

- >> Medium-sized adult male crash test dummies
- >> Individual ratings for frontal crash, side crash and rollover resistance tests

ENHANCED RATINGS

- >> New advanced medium-sized adult male dummy
- >> New dummies representing small-sized adult females
- >> Combined safety rating: Overall Vehicle Score
- >> New side pole crash test
- >> More stringent ratings and injury criteria addressing additional body regions
- >> New recommended advanced crash avoidance technology features information



INTRODUCING THE OVERALL VEHICLE SCORE

One of the enhancements to the 5-Star Safety Ratings Program is the addition of the Overall Vehicle Score. The results of the frontal crash test, side crash tests and rollover resistance test have been combined into one score that indicates the overall risk of injury to a vehicle occupant if the vehicle is involved in a crash. In most cases, each vehicle that is evaluated will receive an Overall Vehicle Score ranging from 1 to 5 stars, with 1 star being the lowest and 5 stars being the highest. The more stars a vehicle has, the safer it is – more stars mean safer cars.

Note: A description of each safety test can be found in the pages that follow.

Calculating the Overall Vehicle Score

The Overall Vehicle Score is based on the tests for frontal and side crash safety and rollover resistance. It indicates how it compares to the projected average Overall Vehicle Score of other passenger vehicles on the road.

A vehicle with a 3-Star Overall Vehicle Score has about the same relative safety as the passenger vehicle fleet average. A vehicle with a 4- or 5-Star provides more injury protection than a vehicle with a 1-, 2- or 3-Star Overall Vehicle Score.

Ratings derived from frontal, side barrier, side pole crash tests, and rollover resistance tests are also determined based on the projected average relative safety of the passenger vehicle fleet.

Note: A vehicle's Overall Vehicle Score can be compared with other vehicles of similar size and weight and whose weights differ by no more than 250 pounds.

The 5-Star Safety Ratings Label

The window sticker on a new vehicle, also called the Monroney Label, is nothing new to consumers, but the 5-Star Safety Ratings portion of the sticker is. This portion of the sticker now presents consumers with frontal crash, side crash, and rollover resistance safety ratings based on tougher testing and rating criteria.



SAFETY TESTS

The goal of the 5-Star Safety Ratings Program is to help consumers make smart decisions about safety when purchasing a vehicle. NHTSA conducts three independent crash tests and a rollover resistance test on vehicles and uses a 5-Star rating system for assigning vehicle scores where more stars mean safer cars.

The Frontal Crash Test

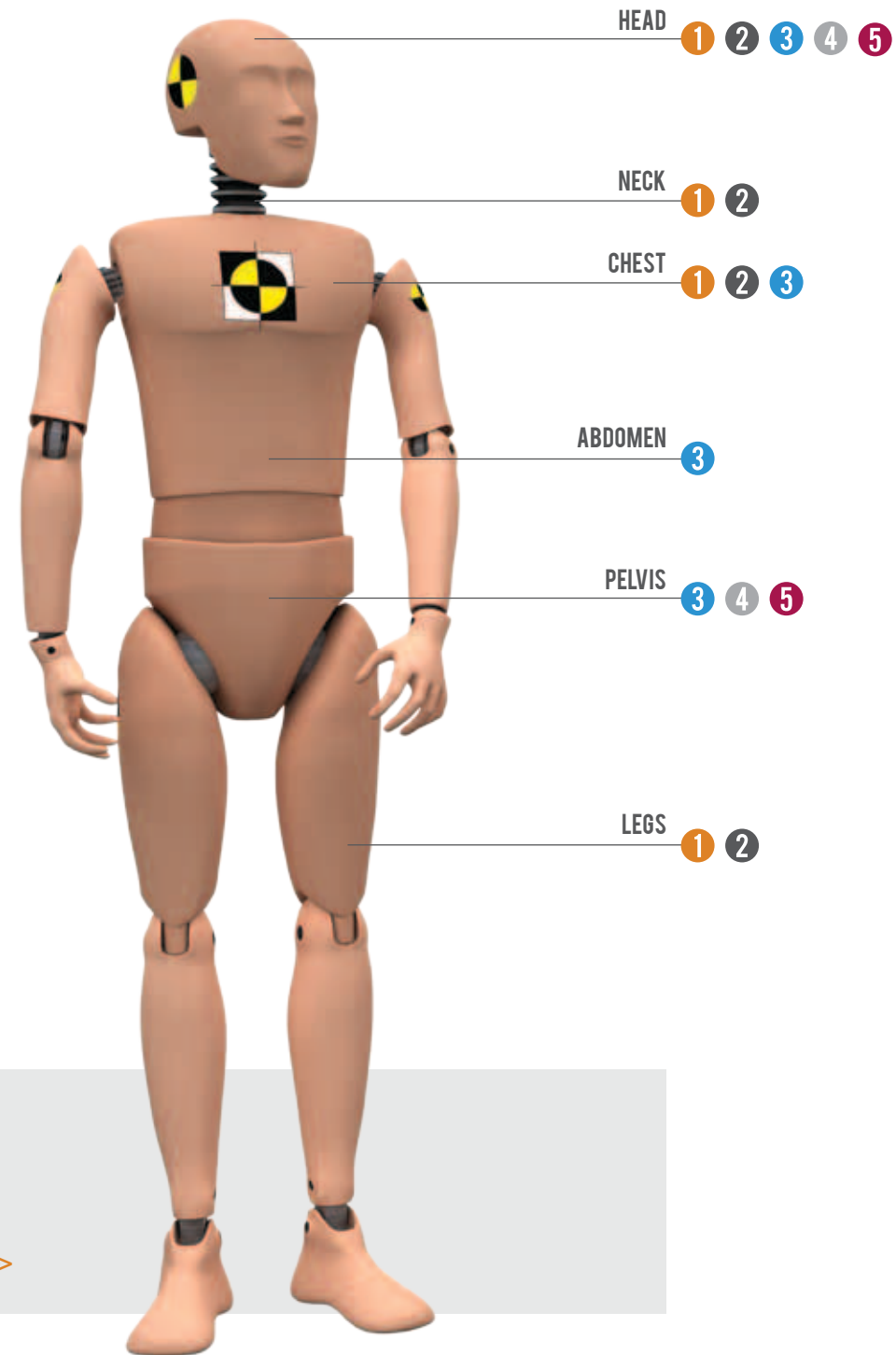
- 1 Average-sized adult male dummy (Driver)
- 2 Small-sized adult female dummy (Front passenger)

The Side Barrier Crash Test

- 3 Average-sized adult male dummy (Driver)
- 4 Small-sized adult female dummy (Rear passenger)

The Side Pole Crash Test

- 5 Small-sized adult female dummy (Driver)



This image points to the parts of the body where data is collected when performing safety tests >>

The Frontal Crash Test

>> Picture this scenario: You, the driver, are heading south on a two-lane road, while another vehicle is driving north on the same street. The driver in the northbound vehicle starts to fall asleep at the wheel and veers into your lane. Suddenly, you collide head-on with the northbound vehicle. NHTSA's frontal test simulates this type of crash.

Note: The frontal crash ratings of a vehicle, like the Overall Vehicle Score, can only be compared to those of other vehicles of similar size and weight. These weights may not differ by more than 250 pounds.

The Side Barrier Crash Test

>> Picture this scenario: You pull up to a four-way intersection and make a complete stop, look to your left and right and begin to accelerate into the intersection. Another vehicle approaches the same intersection, but doesn't yield at the stop sign and hits your vehicle on the driver's side. NHTSA's side barrier test simulates this type of crash.

The Side Pole Crash Test

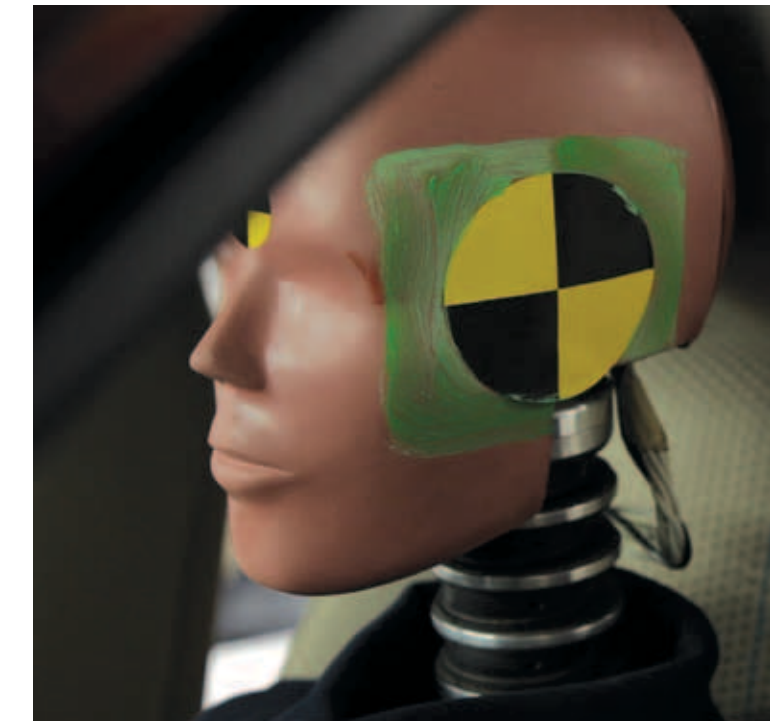
>> Picture this scenario: On a rainy afternoon, you're driving down a curved street in your neighborhood. All of a sudden, you lose control of the vehicle. You start sliding on the road sideways and crash into a telephone pole on the driver's side. NHTSA's side pole test simulates this type of crash.

In each of the crash tests described above, readings from crash test dummies indicate the seriousness of the injuries that would occur to vehicle occupants in the type of crash involved.

The Rollover Resistance Test

>> Picture this scenario: You're driving your SUV on a 55-mph highway and suddenly you come upon a sharp curve. You try to navigate the curve, but you're traveling too fast and losing control of your vehicle, and your vehicle departs the road and rolls over. NHTSA's rollover resistance test measures the risk of rollover in this single-vehicle, loss-of-control scenario.

Each year, more than 8,000 people die in rollover crashes and nearly 85 percent of such fatalities occur in single-vehicle crashes. The rollover test conducted by NHTSA determines how well a vehicle resists rolling over in severe turning maneuvers. While the ratings do not predict the likelihood of being involved in a single-vehicle crash, vehicles with a higher number of stars are less likely to roll over if faced with this scenario.



SAFETY FEATURES

1 Advanced Crash Avoidance Technologies

Beginning with model year 2011, NHTSA identifies on its website, www.SaferCar.gov, vehicles equipped with any of three recommended crash avoidance technologies that meet the agency's established requirements. These technologies, Electronic Stability Control (ESC), Forward Collision Warning (FCW), and Lane Departure Warning (LDW), can help drivers avoid crashes. >>

Below are the advanced crash avoidance technologies and their safety benefits that NHTSA recommends as part of its enhanced 5-Star Safety Ratings Program:

Electronic Stability Control (ESC)

- >> Senses when your vehicle is starting to lose control and helps you maintain control during extreme maneuvers
- >> Automatically applies the brake to one or more of the wheels to turn your vehicle to the appropriate direction

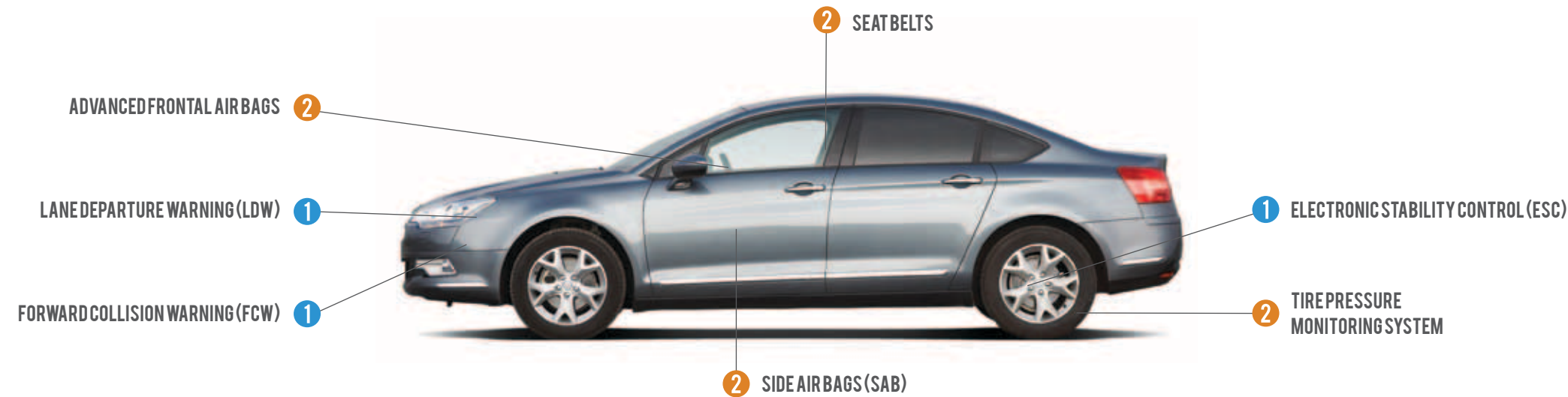
Note: ESC cannot keep your vehicle on the road if the vehicle's speed is simply too great for the conditions.

Forward Collision Warning (FCW)

- >> Alerts you when your vehicle is getting too close to another vehicle, allowing you to brake or steer, which can help avoid a crash

Lane Departure Warning (LDW)

- >> Senses and monitors lane markings
- >> Warns you when your vehicle is unintentionally drifting to another lane, or leaving the road altogether, potentially allowing you to steer back into your lane



2 Other Safety Equipment

Vehicle manufacturers realize that today's consumers are looking for safety and reliability when shopping for a new vehicle. Below are descriptions of the safety features available on many new vehicles:

Seat belts

- >> Keeps you and your passengers in the vehicle and reduces the risk of hitting the steering wheel, dashboard or windshield during a crash
- >> It is recommended for you, the new buyer, to test a vehicle's seat belts to ensure their accessibility and proper fit
- >> Enhanced seat belt reminder systems encourage you and your passengers to wear your seat belts

Advanced frontal air bags

- >> Prevents you and your passengers from hitting the steering wheel, dashboard or windshield
- >> Sensors may detect the severity of the crash, your size and that of your passengers, and whether seat belts are in use and at what seating positions so that the appropriate level of air bag protection can be provided

Side air bags (SAB)

- >> Protects you and your passengers' head, chest, and in some cases, pelvis when sitting on the struck side of a side-impact crash

Tire Pressure Monitoring System

- >> Under-inflation is among the leading causes of tire failure and affects many different types of crashes. This safety feature alerts you with a warning light on the dashboard when any of the vehicle's tires are significantly under-inflated

<< Given their anticipated safety benefits to help drivers avoid crashes, NHTSA encourages consumers to purchase vehicles with advanced crash avoidance technologies.

A more comprehensive list of a vehicle's available features can be obtained from the manufacturer or found by visiting the **Government 5-Star Safety Ratings** section of www.SaferCar.gov and searching for the desired vehicle make and model.



KEY SAFETY MILESTONES

1978

NHTSA began testing vehicles for **frontal impact** protection.

1993

NHTSA began using the **5-Star Safety Ratings system** to assign safety scores based on the level of occupant protection a vehicle provides.

1996

NHTSA began testing and rating vehicles for **side impact protection**.

2000

NHTSA began testing and rating vehicles for **rollover resistance** based on a static measurement of a vehicle's track width and the height of its center of gravity.

2003

NHTSA **updated the rollover program** to include a dynamic test that measures untripped rollovers.

2004

NHTSA launched a new website, **www.SaferCar.gov**, to provide consumers with vehicle safety information.

2006

NHTSA began requiring vehicle manufacturers to include **safety rating information on the vehicle window sticker**, also known as the Monroney label.

2008

NHTSA **announced the most significant changes in the history of the NCAP program**, including the addition of a new side pole test, improved crash test dummies, more stringent ratings criteria, and the identification of vehicles equipped with advanced crash avoidance technologies that meet NHTSA's performance criteria.

2010

NHTSA **implemented the enhanced NCAP program beginning with model year 2011** and provided the safety ratings of tested vehicles and vehicles equipped with advanced crash avoidance technologies on www.SaferCar.gov.



PURCHASING WITH SAFETY IN MIND

Model Year 2012 Government 5-Star Safety Ratings

MAKE	MODEL	Body Style	RATINGS									SAFETY FEATURES			
			Frontal Crash (Driver)	Frontal Crash (Passenger)	Overall Frontal	Side Barrier (Driver)	Side Barrier (Passenger—Rear Seat)	Side Pole (Driver)	Overall Side	Rollover	Overall Vehicle Score	Lane Departure Warning	Forward Collision Warning	Electronic Stability Control	
Acura	MDX 4WD	SUV	★★★★★	★★★★	★★★★	★★★★★	★★★★★	★★★★	★★★★★	★★★★	★★★★	★★★★	N	O	S
	RDX FWD	SUV	-	-	-	-	-	-	-	-	-	-	N	N	S
	RDX 4WD	SUV	-	-	-	-	-	-	-	★★★★	-	-	N	N	S
	RL 4WD	4 DR	-	-	-	-	-	-	-	★★★★★	-	-	N	O	S
	TL-Early Release FWD	4 DR	★★★★	★★	★★	★★★	★★★★	★★★★★	★★★★	★★★★★	★★★★★	★★★	N	N	S
	TL-Later Release FWD	4 DR	★★★★	★★★	★★★★	★★★	★★★★	★★★★★	★★★★	★★★★★	★★★★★	★★★★	N	N	S
	TL-Early Release 4WD	4 DR	★★★★	★★	★★	★★★	★★★★	★★★★★	★★★★	★★★★★	★★★★★	★★★	N	N	S
	TL-Later Release 4WD	4 DR	★★★★	★★★	★★★★	★★★	★★★★	★★★★★	★★★★	★★★★★	★★★★★	★★★★	N	N	S
	TSX FWD	4 DR	-	-	-	-	-	-	-	★★★★★	-	-	N	N	S
	TSX Sport Wagon FWD	SW	-	-	-	-	-	-	-	★★★★★	-	-	N	N	S
	TSX V6 FWD	4 DR	-	-	-	-	-	-	-	★★★★★	-	-	N	N	S
	ZDX 4WD	SUV	★★★★★	★★★★	★★★★	★★★★★	★★★★★	★★★★★	★★★★★	★★★★★	★★★★	★★★★★	N	O	S
Audi	A3 FWD	4 DR	-	-	-	-	-	-	-	-	-	-	N	N	S
	A3 AWD	4 DR	-	-	-	-	-	-	-	-	-	-	N	N	S
	A4 FWD	4 DR	★★★	★★★★	★★★★	★★★★	★★★★★	★★★★★	★★★★★	★★★★★	★★★★★	★★★★	N	N	S
	A4 AWD	4 DR	★★★	★★★★	★★★★	★★★★	★★★★★	★★★★★	★★★★★	★★★★★	★★★★★	★★★★	N	N	S
	A4 AVANT AWD	SW	★★★	★★★★	★★★★	★★★★	★★★★★	★★★★★	★★★★★	★★★★★	★★★★★	★★★★	N	N	S
	A5 FWD	Conv	-	-	-	-	-	-	-	-	-	-	N	N	S
	A5 AWD	2 DR	-	-	-	-	-	-	-	-	-	-	N	N	S
	A5 AWD	Conv	-	-	-	-	-	-	-	-	-	-	N	N	S
	A6 FWD	4 DR	-	-	-	-	-	-	-	-	-	-	-	-	S
	A6 AWD	4 DR	-	-	-	-	-	-	-	-	-	-	-	-	S
	A7 AWD	4 DR	-	-	-	-	-	-	-	-	-	-	-	-	S
	A8 AWD	4 DR	-	-	-	-	-	-	-	-	-	-	-	-	S
	Q5 AWD	SUV	-	-	-	-	-	-	-	-	★★★★	-	N	N	S
	Q7 AWD	SUV	-	-	-	-	-	-	-	-	★★★★	-	N	N	S
	R8 AWD	2 DR	-	-	-	-	-	-	-	-	-	-	N	N	S
	R8 Spyder AWD	Conv	-	-	-	-	-	-	-	-	-	-	N	N	S
	S4 FWD	4 DR	★★★	★★★★	★★★★	★★★★	★★★★★	★★★★★	★★★★★	★★★★★	★★★★★	★★★★	-	-	-

MAKE	MODEL	Body Style	RATINGS									SAFETY FEATURES			
			Frontal Crash (Driver)	Frontal Crash (Passenger)	Overall Frontal	Side Barrier (Driver)	Side Barrier (Passenger—Rear Seat)	Side Pole (Driver)	Overall Side	Rollover	Overall Vehicle Score	Lane Departure Warning	Forward Collision Warning	Electronic Stability Control	
Audi	S4 AWD	4 DR	★★★	★★★★	★★★★	★★★★	★★★★★	★★★★★	★★★★★	★★★★★	★★★★★	★★★★	-	-	-
	S5 FWD	Conv	-	-	-	-	-	-	-	-	-	-	-	-	-
	S5 AWD	Conv	-	-	-	-	-	-	-	-	-	-	-	-	-
	S5 AWD	2 DR	-	-	-	-	-	-	-	-	-	-	-	-	-
	TT AWD	2 DR	-	-	-	-	-	-	-	-	-	-	N	N	S
	TT Roadster AWD	Conv	-	-	-	-	-	-	-	-	-	-	N	N	S
Bentley	Continental Flying Spur AWD	4 DR	-	-	-	-	-	-	-	-	-	-	-	-	-
	Continental GT AWD	2 DR	-	-	-	-	-	-	-	-	-	-	-	-	-
	Continental GTC AWD	Conv	-	-	-	-	-	-	-	-	-	-	-	-	-
	Continental Supersports AWD	Conv	-	-	-	-	-	-	-	-	-	-	-	-	-
	Continental Supersports AWD	2 DR	-	-	-	-	-	-	-	-	-	-	-	-	-
	Mulsanne RWD	4 DR	-	-	-	-	-	-	-	-	-	-	-	-	-
BMW	128i RWD	2 DR	-	-	-	-	-	-	-	-	-	-	N	N	S
	128i RWD	Conv	-	-	-	-	-	-	-	-	-	-	N	N	S
	135i RWD	Conv	-	-	-	-	-	-	-	-	-	-	N	N	S
	135i RWD	2 DR	-	-	-	-	-	-	-	-	-	-	N	N	S
	328i RWD	2 DR	-	-	-	-	-	-	-	-	-	-	N	N	S
	328i RWD	SW	-	-	-	-	-	-	-	-	-	-	N	N	S
	328i RWD	4 DR	★★★★	★★★★★	★★★★	★★★★★	★★★★★	★★★★★	★★★★★	★★★★★	★★★★★	★★★★★	N	N	S
	328i RWD	Conv	-	-	-	-	-	-	-	-	-	-	N	N	S
	328i XDRIVE AWD	2 DR	-	-	-	-	-	-	-	-	-	-	N	N	S
	328i XDRIVE AWD	SW	-	-	-	-	-	-	-	-	-	-	N	N	S
	335i RWD	4 DR	★★★★	★★★★★	★★★★	★★★★★	★★★★★	★★★★★	★★★★★	★★★★★	★★★★★	★★★★★	N	N	S
	335i RWD	Conv	-	-	-	-	-	-	-	-	-	-	N	N	S
	335i RWD	2 DR	-	-	-	-	-	-	-	-	-	-	N	N	S
	335i XDRIVE AWD	2 DR	-	-	-	-	-	-	-	-	-	-	N	N	S
	335is HP RWD	2 DR	-	-	-	-	-	-	-	-	-	-	N	N	S
	335is HP RWD	Conv	-	-	-	-	-	-	-	-	-	-	N	N	S
	528i RWD	4 DR	★★★★	★★★★	★★★★	★★★★★	★★★★★	★★★★★	★★★★★	★★★★★	★★★★★	★★★★★	0	0	S
	528xi AWD	4 DR	★★★★	★★★★	★★★★	★★★★★	★★★★★	★★★★★	★★★★★	★★★★★	★★★★★	★★★★★	0	0	S
	535i RWD	4 DR	★★★★	★★★★	★★★★	★★★★★	★★★★★	★★★★★	★★★★★	★★★★★	★★★★★	★★★★★	0	0	S
	535i GT RWD	4 DR	★★★★	★★★★	★★★★	★★★★★	★★★★★	★★★★★	★★★★★	★★★★★	★★★★★	★★★★★	0	0	S

MAKE	MODEL	Body Style	RATINGS									SAFETY FEATURES			
			Frontal Crash (Driver)	Frontal Crash (Passenger)	Overall Frontal	Side Barrier (Driver)	Side Barrier (Passenger—Rear Seat)	Side Pole (Driver)	Overall Side	Rollover	Overall Vehicle Score	Lane Departure Warning	Forward Collision Warning	Electronic Stability Control	
BMW	535i XDRIVE AWD	4 DR	★★★★	★★★★	★★★★	★★★★★	★★★★★	★★★★★	★★★★★	★★★★★	★★★★★	★★★★★	0	0	S
	535i XDRIVE GT AWD	4 DR	★★★★	★★★★	★★★★	★★★★★	★★★★★	★★★★★	★★★★★	★★★★★	★★★★★	★★★★★	0	0	S
	550i RWD	4 DR	★★★★	★★★★	★★★★	★★★★★	★★★★★	★★★★★	★★★★★	★★★★★	★★★★★	★★★★★	0	0	S
	550i GT RWD	4 DR	★★★★	★★★★	★★★★	★★★★★	★★★★★	★★★★★	★★★★★	★★★★★	★★★★★	★★★★★	0	0	S
	550i XDRIVE AWD	4 DR	★★★★	★★★★	★★★★	★★★★★	★★★★★	★★★★★	★★★★★	★★★★★	★★★★★	★★★★★	0	0	S
	550i XDRIVE GT AWD	4 DR	★★★★	★★★★	★★★★	★★★★★	★★★★★	★★★★★	★★★★★	★★★★★	★★★★★	★★★★★	0	0	S
	640i RWD	2 DR	-	-	-	-	-	-	-	-	-	-	0	0	S
	640i RWD	Conv	-	-	-	-	-	-	-	-	-	-	0	0	S
	650i RWD	2 DR	-	-	-	-	-	-	-	-	-	-	0	0	S
	650i RWD	Conv	-	-	-	-	-	-	-	-	-	-	0	0	S
	650Xi AWD	Conv	-	-	-	-	-	-	-	-	-	-	0	0	S
	650Xi AWD	2 DR	-	-	-	-	-	-	-	-	-	-	0	0	S
	740i RWD	4 DR	-	-	-	-	-	-	-	-	-	-	0	0	S
	740Li RWD	4 DR	-	-	-	-	-	-	-	-	-	-	0	0	S
	750i RWD	4 DR	-	-	-	-	-	-	-	-	-	-	0	0	S
	750i XDRIVE AWD	4 DR	-	-	-	-	-	-	-	-	-	-	0	0	S
	750Li RWD	4 DR	-	-	-	-	-	-	-	-	-	-	0	0	S
	750Li XDRIVE AWD	4 DR	-	-	-	-	-	-	-	-	-	-	0	0	S
	760Li RWD	4 DR	-	-	-	-	-	-	-	-	-	-	0	0	S
	Active Hybrid 750i RWD	4 DR	-	-	-	-	-	-	-	-	-	-	0	-	S
	Active Hybrid 750Li RWD	4 DR	-	-	-	-	-	-	-	-	-	-	0	-	S
	M3 RWD	Conv	-	-	-	-	-	-	-	-	-	-	N	N	S
	M3 RWD	2 DR	-	-	-	-	-	-	-	-	-	-	N	N	S
	M5 RWD	4 DR	-	-	-	-	-	-	-	-	-	-	0	N	S
	X3 XDRIVE28i AWD	SUV	-	-	-	-	-	-	-	-	-	-	N	N	S
	X3 XDRIVE35i AWD	SUV	-	-	-	-	-	-	-	-	-	-	N	N	S
	X5 M AWD	SUV	-	-	-	-	-	-	-	-	★★★★	-	N	N	S
	X5 XDRIVE35D AWD	SUV	-	-	-	-	-	-	-	-	★★★★	-	0	N	S
	X5 XDRIVE35i AWD	SUV	-	-	-	-	-	-	-	-	★★★★	-	0	N	S
	X5 XDRIVE50i AWD	SUV	-	-	-	-	-	-	-	-	★★★★	-	0	N	S
X6 M AWD	SUV	-	-	-	-	-	-	-	-	-	-	N	N	S	

MAKE	MODEL	Body Style	RATINGS									SAFETY FEATURES			
			Frontal Crash (Driver)	Frontal Crash (Passenger)	Overall Frontal	Side Barrier (Driver)	Side Barrier (Passenger—Rear Seat)	Side Pole (Driver)	Overall Side	Rollover	Overall Vehicle Score	Lane Departure Warning	Forward Collision Warning	Electronic Stability Control	
BMW	X6 XDRIVE35i AWD	SUV	-	-	-	-	-	-	-	-	-	0	N	S	
	X6 XDRIVE50i AWD	SUV	-	-	-	-	-	-	-	-	0	N	S		
	Z4 SDRIVE28i RWD	2 DR	-	-	-	-	-	-	-	-	N	N	S		
	Z4 SDRIVE35i RWD	2 DR	-	-	-	-	-	-	-	-	N	N	S		
	Z4 SDRIVE35is RWD	2 DR	-	-	-	-	-	-	-	-	N	N	S		
Buick	Enclave FWD	SUV	★★★★★	★★★★	★★★★	★★★★★	★★★★★	★★★★★	★★★★★	★★★★★	★★★★	★★★★★	N	N	S
	Enclave AWD	SUV	★★★★★	★★★★	★★★★	★★★★★	★★★★★	★★★★★	★★★★★	★★★★★	★★★★	★★★★★	N	N	S
	Lacrosse FWD	4 DR	★★★★★	★★★★★	★★★★★	★★★★★	★★★★	★★★★	★★★★★	★★★★	★★★★★	N	N	S	
	Lacrosse AWD	4 DR	★★★★★	★★★★★	★★★★★	★★★★★	★★★★	★★★★	★★★★★	★★★★	★★★★★	N	N	S	
	Lacrosse E Assist FWD	4 DR	★★★★★	★★★★★	★★★★★	★★★★★	★★★★	★★★★	★★★★★	★★★★	★★★★★	N	N	S	
	Lacrosse E Assist AWD	4 DR	★★★★★	★★★★★	★★★★★	★★★★★	★★★★	★★★★	★★★★★	★★★★	★★★★★	N	N	S	
	Regal FWD	4 DR	★★★★★	★★★★	★★★★	★★★★★	★★★★★	★★★★★	★★★★★	★★★★	★★★★★	N	N	S	
	Regal E Assist FWD	4 DR	★★★★★	★★★★	★★★★	★★★★★	★★★★★	★★★★★	★★★★★	★★★★	★★★★★	N	N	S	
	Regal AWD	4 DR	★★★★★	★★★★	★★★★	★★★★★	★★★★★	★★★★★	★★★★★	★★★★	★★★★★	N	N	S	
VeraN FWD	4 DR	-	-	-	-	-	-	-	-	-	N	N	S		
Cadillac	CTS RWD	4 DR	★★★★★	★★★★★	★★★★★	★★★★★	★★★★★	★★★★★	★★★★★	★★★★★	★★★★	★★★★★	N	N	S
	CTS AWD	SW	★★★★★	★★★★★	★★★★★	★★★★★	★★★★★	★★★★★	★★★★★	★★★★★	★★★★	★★★★★	N	N	S
	CTS AWD	4 DR	★★★★★	★★★★★	★★★★★	★★★★★	★★★★★	★★★★★	★★★★★	★★★★★	★★★★	★★★★★	N	N	S
	CTS RWD	2 DR	-	-	-	-	-	-	-	-	-	N	N	S	
	CTS RWD	SW	★★★★★	★★★★★	★★★★★	★★★★★	★★★★★	★★★★★	★★★★★	★★★★★	★★★★	★★★★★	N	N	S
	CTS AWD	2 DR	-	-	-	-	-	-	-	-	-	N	N	S	
	Escalade RWD	SUV	★★★★★	★★★★	★★★★★	★★★★★	★★★★★	★★★★★	★★★★★	★★★★	★★★★	N	N	S	
	Escalade AWD	SUV	★★★★★	★★★★	★★★★★	★★★★★	★★★★★	★★★★★	★★★★★	★★★★	★★★★	N	N	S	
	Escalade ESV RWD	SUV	★★★★★	★★★★★	★★★★★	★★★★★	★★★★★	★★★★★	★★★★★	★★★★	★★★★	N	N	S	
	Escalade ESV AWD	SUV	★★★★★	★★★★★	★★★★★	★★★★★	★★★★★	★★★★★	★★★★★	★★★★	★★★★	N	N	S	
	Escalade EXT AWD	SUV	-	-	-	-	-	-	-	★★★	-	N	N	S	
	Escalade Hybrid RWD	SUV	★★★★★	★★★★	★★★★★	★★★★★	★★★★★	★★★★★	★★★★★	★★★★	★★★★	N	N	S	
	Escalade Hybrid AWD	SUV	★★★★★	★★★★	★★★★★	★★★★★	★★★★★	★★★★★	★★★★★	★★★★	★★★★	N	N	S	
	SRX FWD	SUV	★★★★★	★★★★	★★★★★	★★★★★	★★★★★	★★★★	★★★★★	★★★★	★★★★★	N	N	S	
SRX AWD	SUV	★★★★★	★★★★	★★★★★	★★★★★	★★★★★	★★★★	★★★★★	★★★★	★★★★★	N	N	S		
Chevrolet	Avalanche RWD	SUV	-	-	-	-	-	-	-	-	★★★	-	N	N	S
	Avalanche 4WD	SUV	-	-	-	-	-	-	-	-	★★★	-	N	N	S

MAKE	MODEL	Body Style	RATINGS									SAFETY FEATURES			
			Frontal Crash (Driver)	Frontal Crash (Passenger)	Overall Frontal	Side Barrier (Driver)	Side Barrier (Passenger—Rear Seat)	Side Pole (Driver)	Overall Side	Rollover	Overall Vehicle Score	Lane Departure Warning	Forward Collision Warning	Electronic Stability Control	
Chevrolet	Camaro RWD	Conv	—	—	—	—	—	—	—	—	★★★★★	—	N	N	S
	Camaro RWD	2 DR	★★★★★	★★★★★	★★★★★	★★★★★	★★★★★	★★★★★	★★★★★	★★★★★	★★★★★	★★★★★	N	N	S
	Captiva FWD	SUV	—	—	—	—	—	—	—	—	★★★★	—	—	—	S
	Captiva AWD	SUV	—	—	—	—	—	—	—	—	★★★★	—	—	—	S
	Chevrolet Caprice PPV RWD	4 DR	—	—	—	—	—	—	—	—	—	—	—	—	S
	Colorado Regular Cab RWD	PU	—	—	—	—	—	—	—	—	★★★★	—	N	N	S
	Colorado Regular Cab AWD	PU	—	—	—	—	—	—	—	—	★★★★	—	N	N	S
	Colorado Extended Cab RWD	PU	—	—	—	—	—	—	—	—	★★★★	—	N	N	S
	Colorado Extended Cab AWD	PU	—	—	—	—	—	—	—	—	★★★★	—	N	N	S
	Colorado Crew Cab RWD	PU	—	—	—	—	—	—	—	—	★★★★	—	N	N	S
	Colorado Crew Cab AWD	PU	—	—	—	—	—	—	—	—	★★★★	—	N	N	S
	Corvette RWD	Conv	—	—	—	—	—	—	—	—	—	—	N	N	S
	Corvette RWD	2 DR	—	—	—	—	—	—	—	—	—	—	N	N	S
	Corvette Z06 RWD	2 DR	—	—	—	—	—	—	—	—	—	—	N	N	S
	Corvette ZR1 RWD	2 DR	—	—	—	—	—	—	—	—	—	—	N	N	S
	Cruze FWD	4 DR	★★★★★	★★★★★	★★★★★	★★★★★	★★★★★	★★★★★	★★★★★	★★★★★	★★★★	★★★★★	N	N	S
	Equinox FWD	SUV	★★★★★	★★★★	★★★★	★★★★	★★★★★	★★★★★	★★★★★	★★★★★	★★★★	★★★★	0	0	S
	Equinox AWD	SUV	★★★★★	★★★★	★★★★	★★★★	★★★★★	★★★★★	★★★★★	★★★★★	★★★★	★★★★	0	0	S
	Express Cargo G13405 RWD	VAN	—	—	—	—	—	—	—	—	—	—	—	—	S
	Express Cargo G23405 RWD	VAN	—	—	—	—	—	—	—	—	—	—	—	—	S
	Express Cargo G23705 RWD	VAN	—	—	—	—	—	—	—	—	—	—	—	—	S
	Express Cargo G33405 RWD	VAN	—	—	—	—	—	—	—	—	—	—	—	—	S
	Express Cargo G33705 RWD	VAN	—	—	—	—	—	—	—	—	—	—	—	—	S
	Express Cargo H13405 AWD	VAN	—	—	—	—	—	—	—	—	—	—	—	—	S
	Express Passenger 1500 RWD	VAN	—	—	—	—	—	—	—	—	★★★	—	N	N	S
	Express Passenger 1500 AWD	VAN	—	—	—	—	—	—	—	—	★★★	—	N	N	S
	Express Passenger 2500 RWD	VAN	—	—	—	—	—	—	—	—	★★★	—	N	N	S
	Express Passenger 3500 12-Pass RWD	VAN	—	—	—	—	—	—	—	—	★★★	—	N	N	S
	Express Passenger 3500 15-Pass RWD	VAN	—	—	—	—	—	—	—	—	★★★	—	N	N	S
	Impala FWD	4 DR	★★★★★	★★★★	★★★★	★★	★★★★★	★★★★★	★★★★	★★★★	★★★★	★★★★	N	N	S
Malibu FWD	4 DR	★★★★★	★★★	★★★★	★★★★	★★★★★	★★★★★	★★★★★	★★★★	★★★★	★★★★	N	N	S	
Silverado 1500 Regular Cab RWD	PU	★★★★★	★★★★	★★★★	★★★★★	—	★★★★★	★★★★★	★★★★	★★★★	★★★★	N	N	S	

MAKE	MODEL	Body Style	RATINGS									SAFETY FEATURES		
			Frontal Crash (Driver)	Frontal Crash (Passenger)	Overall Frontal	Side Barrier (Driver)	Side Barrier (Passenger—Rear Seat)	Side Pole (Driver)	Overall Side	Rollover	Overall Vehicle Score	Lane Departure Warning	Forward Collision Warning	Electronic Stability Control
Chevrolet	Silverado 1500 Regular Cab 4WD	PU	★★★★★	★★★★	★★★★	★★★★★	—	★★★★★	★★★★★	★★★★	★★★★	N	N	S
	Silverado 1500 Extended Cab RWD	PU	★★★★★	★★★★	★★★★	★★★★★	★★★★★	★★★★★	★★★★★	★★★★	★★★★	N	N	S
	Silverado 1500 Extended Cab 4WD	PU	★★★★★	★★★★	★★★★	★★★★★	★★★★★	★★★★★	★★★★★	★★★★	★★★★	N	N	S
	Silverado 1500 Crew Cab RWD	PU	★★★★	★★★★	★★★★	★★★★★	★★★★★	★★★★★	★★★★★	★★★★	★★★★	N	N	S
	Silverado 1500 Crew Cab 4WD	PU	★★★★	★★★★	★★★★	★★★★★	★★★★★	★★★★★	★★★★★	★★★★	★★★★	N	N	S
	Silverado 1500 Crew Cab Hybrid RWD	PU	★★★★	★★★★	★★★★	★★★★★	★★★★★	★★★★★	★★★★★	★★★★	★★★★	N	N	S
	Silverado 1500 Crew Cab Hybrid 4WD	PU	★★★★	★★★★	★★★★	★★★★★	★★★★★	★★★★★	★★★★★	★★★★	★★★★	N	N	S
	Silverado 2500 Regular Cab RWD	PU	—	—	—	—	—	—	—	★★★	—	N	N	S
	Silverado 2500 Regular Cab 4WD	PU	—	—	—	—	—	—	—	★★★★	—	N	N	S
	Silverado 2500 Extended Cab RWD	PU	—	—	—	—	—	—	—	★★★	—	N	N	S
	Silverado 2500 Extended Cab 4WD	PU	—	—	—	—	—	—	—	★★★★	—	N	N	S
	Silverado 2500 Crew Cab RWD w/o SAB	PU	★★★	★★★	★★★	★★★★★	★★★★★	★	★★★★	★★★	★★★	N	N	S
	Silverado 2500 Crew Cab RWD	PU	★★★	★★★	★★★	★★★★★	★★★★★	★★★★★	★★★★★	★★★	★★★★	N	N	S
	Silverado 2500 Crew Cab 4WD w/o SAB	PU	★★★	★★★	★★★	★★★★★	★★★★★	★	★★★★	★★★★	★★★	N	N	S
	Silverado 2500 Crew Cab 4WD	PU	★★★	★★★	★★★	★★★★★	★★★★★	★★★★★	★★★★★	★★★★	★★★★	N	N	S
	Silverado 3500 Regular Cab RWD	PU	—	—	—	—	—	—	—	—	—	—	—	S
	Silverado 3500 Regular Cab 4WD	PU	—	—	—	—	—	—	—	—	—	—	—	S
	Silverado 3500 Extended Cab RWD	PU	—	—	—	—	—	—	—	—	—	—	—	S
	Silverado 3500 Extended Cab 4WD	PU	—	—	—	—	—	—	—	—	—	—	—	S
	Silverado 3500 Crew Cab RWD	PU	—	—	—	—	—	—	—	—	—	—	—	S
	Silverado 3500 Crew Cab 4WD	PU	—	—	—	—	—	—	—	—	—	—	—	S
	Sonic FWD	4 DR	★★★★★	★★★★★	★★★★★	★★★★★	★★★★★	★★★★★	★★★★★	★★★★	★★★★★	N	N	S
	Sonic FWD	5 DR	★★★★★	★★★★★	★★★★★	★★★★★	★★★★★	★★★★★	★★★★★	★★★★	★★★★★	N	N	S
	Suburban 1500 RWD	SUV	★★★★★	★★★★★	★★★★★	★★★★★	★★★★★	★★★★★	★★★★★	★★★	★★★★	N	N	S
	Suburban 1500 4WD	SUV	★★★★★	★★★★★	★★★★★	★★★★★	★★★★★	★★★★★	★★★★★	★★★	★★★★	N	N	S
	Suburban 2500 RWD	SUV	—	—	—	—	—	—	—	—	—	N	N	S
	Suburban 2500 4WD	SUV	—	—	—	—	—	—	—	—	—	N	N	S
	Tahoe RWD	SUV	★★★★★	★★★★	★★★★★	★★★★★	★★★★★	★★★★★	★★★★★	★★★	★★★★	N	N	S
	Tahoe 4WD	SUV	★★★★★	★★★★	★★★★★	★★★★★	★★★★★	★★★★★	★★★★★	★★★	★★★★	N	N	S
	Tahoe Hybrid RWD	SUV	★★★★★	★★★★	★★★★★	★★★★★	★★★★★	★★★★★	★★★★★	★★★	★★★★	N	N	S
	Tahoe Hybrid 4WD	SUV	★★★★★	★★★★	★★★★★	★★★★★	★★★★★	★★★★★	★★★★★	★★★	★★★★	N	N	S
	Traverse FWD	SUV	★★★★★	★★★★	★★★★	★★★★★	★★★★★	★★★★★	★★★★★	★★★★	★★★★★	N	N	S

MAKE	MODEL	Body Style	RATINGS									SAFETY FEATURES			
			Frontal Crash (Driver)	Frontal Crash (Passenger)	Overall Frontal	Side Barrier (Driver)	Side Barrier (Passenger—Rear Seat)	Side Pole (Driver)	Overall Side	Rollover	Overall Vehicle Score	Lane Departure Warning	Forward Collision Warning	Electronic Stability Control	
Chevrolet	Traverse AWD	SUV	★★★★★	★★★★	★★★★	★★★★★	★★★★★	★★★★★	★★★★★	★★★★★	★★★★	★★★★★	N	N	S
	Volt FWD	4 DR	★★★★★	★★★★	★★★★	★★★★★	★★★★★	★★★★★	★★★★★	★★★★★	★★★★★	★★★★★	N	N	S
Chrysler	200 FWD	Conv	—	—	—	—	—	—	—	—	—	—	N	N	S
	200 FWD	4 DR	★★★★	★★★	★★★★	★★★★★	★★★★	★	★★★	★★★★	★★★★	N	N	S	
	300 RWD	4 DR	★★★★★	★★★★	★★★★★	★★★	★★★★★	★★★★★	★★★★★	★★★★★	★★★★	★★★★★	N	O	S
	300 AWD	4 DR	★★★★★	★★★★	★★★★★	★★★	★★★★★	★★★★★	★★★★★	★★★★★	★★★★	★★★★★	N	O	S
	Town And Country FWD	VAN	★★★★	★★★★	★★★★	★★★★★	★★★★★	★★★★★	★★★★★	★★★★★	★★★★	★★★★	N	N	S
Coda	Coda FWD	4 DR	—	—	—	—	—	—	—	—	—	—	—	—	S
Dodge	Avenger FWD	4 DR	★★★★★	★★★	★★★★	★★★	★★★★★	★★	★★★★	★★★★	★★★★	N	N	S	
	Caliber FWD	4 DR	★★★★	★★★★	★★★★	★★★	★★★★★	★	★★★	★★★★	★★★	N	N	S	
	Cargo Van FWD	VAN	—	—	—	—	—	—	—	—	—	N	N	S	
	Challenger RWD	2 DR	—	—	—	—	—	—	—	★★★★	—	N	N	S	
	Charger RWD	4 DR	★★★★★	★★★★	★★★★	★★★★	★★★★★	★★★★★	★★★★★	★★★★★	★★★★★	★★★★★	N	O	S
	Charger AWD	4 DR	★★★★★	★★★★	★★★★	★★★★	★★★★★	★★★★★	★★★★★	★★★★★	★★★★★	★★★★★	N	O	S
	Durango 2WD	SUV	★★★★	★★★	★★★★	★★★★★	★★★★★	★★★★★	★★★★★	★★★★	★★★★	N	O	S	
	Durango 4WD	SUV	★★★★	★★★	★★★★	★★★★★	★★★★★	★★★★★	★★★★★	★★★★	★★★★	N	O	S	
	Grand Caravan FWD	VAN	★★★★	★★★★	★★★★	★★★★★	★★★★★	★★★★★	★★★★★	★★★★	★★★★	N	N	S	
	Journey FWD	SUV	★★★★★	★★★★	★★★★	★★★★★	★★★★	★★★★	★★★★★	★★★★	★★★★	N	N	S	
Journey 4WD	SUV	★★★★★	★★★★	★★★★	★★★★★	★★★★	★★★★	★★★★★	★★★★	★★★★	N	N	S		
Fiat	500 - Early Release FWD	3 HB	★★★★	★★★	★★★★	★★★★★	★★	★★★	★★	★★★★	★★★	N	N	S	
	500 - Later Release FWD	3 HB	★★★★	★★★	★★★★	★★★★★	★★	★★★	★★★	★★★★	★★★	N	N	S	
	500 Cabrio FWD	Conv	—	—	—	—	—	—	—	—	—	N	N	S	
Ford	E-150 RWD	Wagon	—	—	—	—	—	—	—	—	—	N	N	S	
	E-150 RWD	VAN	—	—	—	—	—	—	—	★★★	—	N	N	S	
	E-250 RWD	VAN	—	—	—	—	—	—	—	—	—	N	N	S	
	E-350 P12 RWD	VAN	—	—	—	—	—	—	—	★★★	—	N	N	S	
	E-350 P15 RWD	VAN	—	—	—	—	—	—	—	★★	—	N	N	S	
	Edge AWD	SUV	★★★	★★★	★★★	★★★★★	★★★★★	★★★★★	★★★★★	★★★★	★★★★	N	O	S	
	Edge FWD	SUV	★★★	★★★	★★★	★★★★★	★★★★★	★★★★★	★★★★★	★★★★	★★★★	N	O	S	
	Escape 4x2	SUV	★★	★★★★	★★★	★★★	★★★	★★★★	★★★	★★★	★★★	N	N	S	
	Escape 4x4	SUV	★★	★★★★	★★★	★★★	★★★	★★★★	★★★	★★★	★★★	N	N	S	
Escape HEV 4x2	SUV	★★	★★★★	★★★	★★★	★★★	★★★★	★★★	★★★	★★★	N	N	S		

MAKE	MODEL	Body Style	RATINGS									SAFETY FEATURES			
			Frontal Crash (Driver)	Frontal Crash (Passenger)	Overall Frontal	Side Barrier (Driver)	Side Barrier (Passenger—Rear Seat)	Side Pole (Driver)	Overall Side	Rollover	Overall Vehicle Score	Lane Departure Warning	Forward Collision Warning	Electronic Stability Control	
Ford	Escape HEV 4x4	SUV	★★	★★★★	★★★	★★★	★★★	★★★★	★★★	★★★	★★★	N	N	S	
	Expedition 4x2	SUV	★★★	★★★★	★★★★	★★★★★	★★★★★	★★	★★★★★	★★★	★★★★	N	N	S	
	Expedition 4x4	SUV	★★★	★★★★	★★★★	★★★★★	★★★★★	★★	★★★★★	★★★★	★★★★	N	N	S	
	Expedition 4x2 Extended	SUV	★★★	★★★★	★★★★	★★★★★	★★★★★	★★	★★★★★	★★★	★★★★	N	N	S	
	Expedition 4x4 Extended	SUV	★★★	★★★★	★★★★	★★★★★	★★★★★	★★	★★★★★	★★★★	★★★★	N	N	S	
	Explorer FWD	SUV	★★★★	★★★★	★★★★	★★★★★	★★★★★	★★★★★	★★★★★	★★★★	★★★★	N	O	S	
	Explorer AWD	SUV	★★★★	★★★★	★★★★	★★★★★	★★★★★	★★★★★	★★★★★	★★★★	★★★★	N	O	S	
	F-150 Regular Cab 4X2	PU	★★★★	★★★	★★★★	★★★★★	—	★★★★	★★★★★	★★★★	★★★★	N	N	S	
	F-150 Regular Cab 4X4	PU	★★★★	★★★	★★★★	★★★★★	—	★★★★	★★★★★	★★★	★★★★	N	N	S	
	F-150 Supercab Extended 4X2	PU	★★★★	★★★	★★★★	★★★★★	★★★★★	★★★★	★★★★★	★★★★	★★★★	N	N	S	
	F-150 Supercab Extended 4X4	PU	★★★★	★★★	★★★★	★★★★★	★★★★★	★★★★	★★★★★	★★★	★★★★	N	N	S	
	F-150 Super Crew Cab 4X2	PU	★★★★	★★★	★★★	★★★★★	★★★★★	★★★★★	★★★★★	★★★★	★★★★	N	N	S	
	F-150 Super Crew Cab 4X4	PU	★★★★	★★★	★★★	★★★★★	★★★★★	★★★★★	★★★★★	★★★	★★★★	N	N	S	
	F-250 Regular Cab 4X2	PU	—	—	—	—	—	—	—	★★★★	—	N	N	S	
	F-250 Regular Cab 4X4	PU	—	—	—	—	—	—	—	★★★	—	N	N	S	
	F-250 Supercab Extended 4X2	PU	—	—	—	—	—	—	—	★★★★	—	N	N	S	
	F-250 Supercab Extended 4X4	PU	—	—	—	—	—	—	—	★★★	—	N	N	S	
	F-250 Super Crew Cab 4X2	PU	★★★★	★★★★	★★★★	★★★★★	★★★★★	★★★	★★★★★	★★★★	★★★★	N	N	S	
	F-250 Super Crew Cab 4X4	PU	★★★★	★★★★	★★★★	★★★★★	★★★★★	★★★	★★★★★	★★★	★★★★	N	N	S	
	F-350 Regular Cab 4X2	PU	—	—	—	—	—	—	—	—	—	N	N	S	
	F-350 Regular Cab 4X4	PU	—	—	—	—	—	—	—	—	—	N	N	S	
	F-350 Supercab Extended 4X2	PU	—	—	—	—	—	—	—	—	—	N	N	S	
	F-350 Supercab Extended 4X4	PU	—	—	—	—	—	—	—	—	—	N	N	S	
	F-350 Super Crew Cab 4X2	PU	—	—	—	—	—	—	—	—	—	N	N	S	
	F-350 Super Crew Cab 4X4	PU	—	—	—	—	—	—	—	—	—	N	N	S	
	Fiesta FWD	5 DR	★★★★★	★★★★	★★★★	★★★★	★★★★★	★★★★★	★★★★	★★★★★	★★★★	★★★★	N	N	S
	Fiesta FWD	4 DR	★★★★★	★★★★	★★★★	★★★★	★★★★★	★★★★★	★★★★	★★★★★	★★★★	★★★★	N	N	S
	Flex FWD	SUV	—	—	—	—	—	—	—	★★★★	—	N	N	S	
	Flex AWD	SUV	—	—	—	—	—	—	—	★★★★	—	N	N	S	
	Focus FWD	5 DR	★★★★★	★★★★	★★★★	★★★★	★★★★★	★★★★★	★★★★★	★★★★	★★★★	N	N	S	
	Focus FWD	4 DR	★★★★★	★★★★	★★★★	★★★★	★★★★★	★★★★★	★★★★★	★★★★	★★★★	N	N	S	
	Fusion FWD	4 DR	★★★★	★★★	★★★	★★★★★	★★★	★★★★	★★★★	★★★★	★★★★	N	N	S	

MAKE	MODEL	Body Style	RATINGS									SAFETY FEATURES		
			Frontal Crash (Driver)	Frontal Crash (Passenger)	Overall Frontal	Side Barrier (Driver)	Side Barrier (Passenger—Rear Seat)	Side Pole (Driver)	Overall Side	Rollover	Overall Vehicle Score	Lane Departure Warning	Forward Collision Warning	Electronic Stability Control
Ford	Fusion AWD	4 DR	★★★★	★★★	★★★	★★★★★	★★★	★★★★	★★★★	★★★★★	★★★★	N	N	S
	Fusion HEV FWD	4 DR	★★★	★★★★	★★★	★★★★★	★★★	★★★★	★★★★	★★★★	★★★★	N	N	S
	Mustang RWD	Conv	—	—	—	—	—	—	—	★★★★★	—	N	N	S
	Mustang RWD	2 DR	★★★★	★★★★★	★★★★	★★★★★	★★★	★★★★	★★★★	★★★★★	★★★★	N	N	S
	Taurus FWD	4 DR	★★★★★	★★★★	★★★★	★★★★★	★★★★★	★★★★★	★★★★★	★★★★	★★★★	N	N	S
	Taurus AWD	4 DR	★★★★★	★★★★	★★★★	★★★★★	★★★★★	★★★★★	★★★★★	★★★★	★★★★	N	N	S
	Transit Connect FWD	VAN	★★★	★★★	★★★	★★	★★★★★	★	★★	★★★	★★	N	N	S
Freightliner	Sprinter 2500 RWD	VAN	—	—	—	—	—	—	—	★	—	—	—	—
	Sprinter 2500 RWD Cargo	VAN	—	—	—	—	—	—	—	—	—	—	—	—
	Sprinter 2500 Mixto RWD	VAN	—	—	—	—	—	—	—	—	—	—	—	—
	Sprinter 3500 RWD Cab Chassis	Cab	—	—	—	—	—	—	—	—	—	—	—	—
	Sprinter 3500 RWD Cargo	Van	—	—	—	—	—	—	—	—	—	—	—	—
GMC	Acadia AWD	SUV	★★★★★	★★★★	★★★★	★★★★★	★★★★★	★★★★★	★★★★★	★★★★	★★★★★	N	N	S
	Acadia FWD	SUV	★★★★★	★★★★	★★★★	★★★★★	★★★★★	★★★★★	★★★★★	★★★★	★★★★★	N	N	S
	Canyon Regular Cab RWD	PU	—	—	—	—	—	—	—	★★★★	—	N	N	S
	Canyon Regular Cab AWD	PU	—	—	—	—	—	—	—	★★★★	—	N	N	S
	Canyon Extended Cab RWD	PU	—	—	—	—	—	—	—	★★★★	—	N	N	S
	Canyon Extended Cab AWD	PU	—	—	—	—	—	—	—	★★★★	—	N	N	S
	Canyon Crew Cab RWD	PU	—	—	—	—	—	—	—	★★★★	—	N	N	S
	Canyon Crew Cab AWD	PU	—	—	—	—	—	—	—	★★★★	—	N	N	S
	Savana Cargo G13405 RWD	VAN	—	—	—	—	—	—	—	—	—	—	—	S
	Savana Cargo G23405 RWD	VAN	—	—	—	—	—	—	—	—	—	—	—	S
	Savana Cargo G23705 RWD	VAN	—	—	—	—	—	—	—	—	—	—	—	S
	Savana Cargo G33405 RWD	VAN	—	—	—	—	—	—	—	—	—	—	—	S
	Savana Cargo G33705 RWD	VAN	—	—	—	—	—	—	—	—	—	—	—	S
	Savana Cargo H13405 AWD	VAN	—	—	—	—	—	—	—	—	—	—	—	S
	Savana Passenger 1500 RWD	VAN	—	—	—	—	—	—	—	★★★	—	N	N	S
	Savana Passenger 1500 AWD	VAN	—	—	—	—	—	—	—	★★★	—	N	N	S
	Savana Passenger 2500 RWD	VAN	—	—	—	—	—	—	—	★★★	—	N	N	S
	Savana Passenger 3500 12-Pass RWD	VAN	—	—	—	—	—	—	—	★★★	—	N	N	S
	Savana Passenger 3500 15-Pass RWD	VAN	—	—	—	—	—	—	—	★★★	—	N	N	S
	Sierra 1500 Regular Cab RWD	PU	★★★★★	★★★★	★★★★	★★★★★	—	★★★★★	★★★★★	★★★★	★★★★	N	N	S

MAKE	MODEL	Body Style	RATINGS									SAFETY FEATURES		
			Frontal Crash (Driver)	Frontal Crash (Passenger)	Overall Frontal	Side Barrier (Driver)	Side Barrier (Passenger—Rear Seat)	Side Pole (Driver)	Overall Side	Rollover	Overall Vehicle Score	Lane Departure Warning	Forward Collision Warning	Electronic Stability Control
GMC	Sierra 1500 Regular Cab 4WD	PU	★★★★★	★★★★	★★★★	★★★★★	—	★★★★★	★★★★★	★★★★	★★★★	N	N	S
	Sierra 1500 Extended Cab RWD	PU	★★★★★	★★★★	★★★★	★★★★★	★★★★★	★★★★★	★★★★★	★★★★	★★★★	N	N	S
	Sierra 1500 Extended Cab 4WD	PU	★★★★★	★★★★	★★★★	★★★★★	★★★★★	★★★★★	★★★★★	★★★★	★★★★	N	N	S
	Sierra 1500 Crew Cab RWD	PU	★★★★	★★★★	★★★★	★★★★★	★★★★★	★★★★★	★★★★★	★★★★	★★★★	N	N	S
	Sierra 1500 Crew Cab 4WD	PU	★★★★	★★★★	★★★★	★★★★★	★★★★★	★★★★★	★★★★★	★★★★	★★★★	N	N	S
	Sierra 1500 Crew Cab Hybrid RWD	PU	★★★★	★★★★	★★★★	★★★★★	★★★★★	★★★★★	★★★★★	★★★★	★★★★	N	N	S
	Sierra 1500 Crew Cab Hybrid 4WD	PU	★★★★	★★★★	★★★★	★★★★★	★★★★★	★★★★★	★★★★★	★★★★	★★★★	N	N	S
	Sierra 2500 Regular Cab RWD	PU	—	—	—	—	—	—	—	★★★	—	N	N	S
	Sierra 2500 Regular Cab 4WD	PU	—	—	—	—	—	—	—	★★★★	—	N	N	S
	Sierra 2500 Extended Cab RWD	PU	—	—	—	—	—	—	—	★★★	—	N	N	S
	Sierra 2500 Extended Cab 4WD	PU	—	—	—	—	—	—	—	★★★★	—	N	N	S
	Sierra 2500 Crew Cab RWD	PU	★★★	★★★	★★★	★★★★★	★★★★★	★★★★★	★★★★★	★★★	★★★★	N	N	S
	Sierra 2500 Crew Cab RWD w/o SAB	PU	★★★	★★★	★★★	★★★★★	★★★★★	★	★★★★	★★★	★★★	N	N	S
	Sierra 2500 Crew Cab 4WD	PU	★★★	★★★	★★★	★★★★★	★★★★★	★★★★★	★★★★★	★★★★	★★★★	N	N	S
	Sierra 2500 Crew Cab 4WD w/o SAB	PU	★★★	★★★	★★★	★★★★★	★★★★★	★	★★★★	★★★★	★★★	N	N	S
	Sierra 3500 Regular Cab RWD	PU	—	—	—	—	—	—	—	—	—	—	—	S
	Sierra 3500 Regular Cab 4WD	PU	—	—	—	—	—	—	—	—	—	—	—	S
	Sierra 3500 Extended Cab RWD	PU	—	—	—	—	—	—	—	—	—	—	—	S
	Sierra 3500 Extended Cab 4WD	PU	—	—	—	—	—	—	—	—	—	—	—	S
	Sierra 3500 Crew Cab RWD	PU	—	—	—	—	—	—	—	—	—	—	—	S
	Sierra 3500 Crew Cab 4WD	PU	—	—	—	—	—	—	—	—	—	—	—	S
	Terrain FWD	SUV	★★★★★	★★★★	★★★★	★★★★★	★★★★★	★★★★★	★★★★★	★★★★	★★★★	0	0	S
	Terrain AWD	SUV	★★★★★	★★★★	★★★★	★★★★★	★★★★★	★★★★★	★★★★★	★★★★	★★★★	0	0	S
	Yukon RWD	SUV	★★★★★	★★★★	★★★★★	★★★★★	★★★★★	★★★★★	★★★★★	★★★	★★★★	N	N	S
	Yukon 4WD	SUV	★★★★★	★★★★	★★★★★	★★★★★	★★★★★	★★★★★	★★★★★	★★★	★★★★	N	N	S
	Yukon Denali RWD	SUV	★★★★★	★★★★	★★★★★	★★★★★	★★★★★	★★★★★	★★★★★	★★★	★★★★	N	N	S
	Yukon Denali 4WD	SUV	★★★★★	★★★★	★★★★★	★★★★★	★★★★★	★★★★★	★★★★★	★★★	★★★★	N	N	S
	Yukon Denali XL 1500 RWD	SUV	★★★★★	★★★★★	★★★★★	★★★★★	★★★★★	★★★★★	★★★★★	★★★	★★★★	N	N	S
Yukon Denali XL 1500 4WD	SUV	★★★★★	★★★★★	★★★★★	★★★★★	★★★★★	★★★★★	★★★★★	★★★	★★★★	N	N	S	
Yukon Denali XL 2500 RWD	SUV	—	—	—	—	—	—	—	—	—	N	N	S	
Yukon Denali XL 2500 4WD	SUV	—	—	—	—	—	—	—	—	—	N	N	S	
Yukon Hybrid RWD	SUV	★★★★★	★★★★	★★★★★	★★★★★	★★★★★	★★★★★	★★★★★	★★★	★★★★	N	N	S	

MAKE	MODEL	Body Style	RATINGS									SAFETY FEATURES			
			Frontal Crash (Driver)	Frontal Crash (Passenger)	Overall Frontal	Side Barrier (Driver)	Side Barrier (Passenger—Rear Seat)	Side Pole (Driver)	Overall Side	Rollover	Overall Vehicle Score	Lane Departure Warning	Forward Collision Warning	Electronic Stability Control	
GMC	Yukon Hybrid 4WD	SUV	★★★★★	★★★★	★★★★★	★★★★★	★★★★★	★★★★★	★★★★★	★★★★★	★★★	★★★★	N	N	S
	Yukon XL 1500 RWD	SUV	★★★★★	★★★★★	★★★★★	★★★★★	★★★★★	★★★★★	★★★★★	★★★★★	★★★	★★★★	N	N	S
	Yukon XL 1500 4WD	SUV	★★★★★	★★★★★	★★★★★	★★★★★	★★★★★	★★★★★	★★★★★	★★★★★	★★★	★★★★	N	N	S
	Yukon XL 2500 RWD	SUV	—	—	—	—	—	—	—	—	—	—	N	N	S
	Yukon XL 2500 4WD	SUV	—	—	—	—	—	—	—	—	—	—	N	N	S
Honda	Accord FWD	4 DR	★★★★★	★★★★★	★★★★★	★★★★	★★★★★	★★★★★	★★★★★	★★★★★	★★★★★	★★★★★	N	N	S
	Accord FWD	2 DR	—	—	—	—	—	—	—	★★★★	—	—	N	N	S
	Accord V6 FWD	4 DR	★★★★★	★★★★★	★★★★★	★★★★	★★★★★	★★★★★	★★★★★	★★★★★	★★★★★	★★★★★	N	N	S
	Accord V6 FWD	2 DR	—	—	—	—	—	—	—	★★★★	—	—	N	N	S
	Civic FWD	4 DR	★★★★★	★★★★	★★★★★	★★★★	★★★★★	★★★★★	★★★★★	★★★★	★★★★★	★★★★★	N	N	S
	Civic FWD	2 DR	★★★★★	★★★★	★★★★	★★★	★★★★	★★★★★	★★★★	★★★★	★★★★	★★★★	N	N	S
	Civic CNG FWD	4 DR	—	—	—	—	—	—	—	—	—	—	N	N	S
	Civic Hybrid FWD	4 DR	★★★★★	★★★★	★★★★★	★★★★	★★★★★	★★★★★	★★★★★	★★★★	★★★★★	★★★★★	N	N	S
	CR-V FWD	SUV	★★★★	★★★★★	★★★★★	★★★★★	★★★★★	★★★★★	★★★★★	★★★★	★★★★★	★★★★★	N	N	S
	CR-V 4WD	SUV	★★★★	★★★★★	★★★★★	★★★★★	★★★★★	★★★★★	★★★★★	★★★★	★★★★★	★★★★★	N	N	S
	CR-Z FWD	3 HB	★★★★	★★★	★★★★	★★★	—	★★★★★	★★★	★★★★★	★★★★	★★★★	N	N	S
	Crosstour FWD	SUV	—	—	—	—	—	—	—	★★★★	—	—	—	—	S
	Crosstour 4WD	SUV	—	—	—	—	—	—	—	★★★★	—	—	—	—	S
	FCX FWD	4 DR	—	—	—	—	—	—	—	—	—	—	N	S	S
	Fit FWD	5 HB	★★★★★	★★★★	★★★★	★★★	★★★★★	★★	★★★★	★★★★	★★★★	★★★★	N	N	S
	Insight FWD	5 HB	—	—	—	—	—	—	—	★★★★	—	—	N	N	S
	Odyssey FWD	VAN	★★★★★	★★★★★	★★★★★	★★★★★	★★★★★	★★★★★	★★★★★	★★★★★	★★★★★	★★★★★	N	N	S
	Pilot FWD	SUV	★★★★★	★★★★	★★★★	★★★★★	★★★★	★★★★★	★★★★★	★★★★★	★★★★	★★★★	N	N	S
	Pilot 4WD	SUV	★★★★★	★★★★	★★★★	★★★★★	★★★★	★★★★★	★★★★★	★★★★★	★★★★	★★★★	N	N	S
	Ridgeline Crew Cab 4WD	PU	—	—	—	—	—	—	—	—	★★★★	—	N	N	S
Hyundai	Accent FWD	4 DR	★★★★★	★★★★	★★★★	★★★★★	★★★	★★★★★	★★★★	★★★★	★★★★	★★★★	N	N	S
	Accent FWD	5 HB	★★★★★	★★★★	★★★★	★★★★★	★★★	★★★★★	★★★★	★★★★	★★★★	★★★★	N	N	S
	Azera FWD	4 DR	—	—	—	—	—	—	—	—	—	—	N	N	S
	Elantra FWD	2 DR	—	—	—	—	—	—	—	—	—	—	N	N	S
	Elantra FWD	4 DR	★★★★★	★★	★★★	★★★★	★★★★★	★★★★★	★★★★★	★★★★	★★★★	★★★★	N	N	S
	Elantra – Later Release FWD	4 DR	★★★★★	★★★★	★★★★	★★★★	★★★★★	★★★★★	★★★★★	★★★★	★★★★★	★★★★★	N	N	S
	Elantra Touring FWD	5 HB	—	—	—	—	—	—	—	—	—	—	N	N	S

MAKE	MODEL	Body Style	RATINGS									SAFETY FEATURES		
			Frontal Crash (Driver)	Frontal Crash (Passenger)	Overall Frontal	Side Barrier (Driver)	Side Barrier (Passenger—Rear Seat)	Side Pole (Driver)	Overall Side	Rollover	Overall Vehicle Score	Lane Departure Warning	Forward Collision Warning	Electronic Stability Control
Hyundai	Equus RWD	4 DR	—	—	—	—	—	—	—	—	—	N	N	S
	Genesis RWD	2 DR	—	—	—	—	—	—	—	★★★★★	—	N	N	S
	Genesis RWD	4 DR	—	—	—	—	—	—	—	★★★★★	—	N	N	S
	Santa Fe FWD	SUV	★★★★	★★★★	★★★★	★★★★★	★	★★★★★	★★	★★★★	★★★	N	N	S
	Santa Fe AWD	SUV	★★★★	★★★★	★★★★	★★★★★	★	★★★★★	★★	★★★★	★★★	N	N	S
	Sonata – Later Release FWD	4 DR	★★★★★	★★★★	★★★★	★★★★★	★★★★★	★★★★★	★★★★★	★★★★★	★★★★★	N	N	S
	Sonata Hybrid FWD	4 DR	★★★★★	★★★★	★★★★	★★★★★	★★★★★	★★★★★	★★★★★	★★★★★	★★★★★	N	N	S
	Tucson FWD	SUV	★★★★	★★★★	★★★★	★★★★★	★★★★★	★★★★★	★★★★★	★★★★	★★★★	N	N	S
	Tucson AWD	SUV	★★★★	★★★★	★★★★	★★★★★	★★★★★	★★★★★	★★★★★	★★★★	★★★★	N	N	S
	Veracruz FWD	SUV	—	—	—	—	—	—	—	★★★★	—	N	N	S
	Veracruz AWD	SUV	—	—	—	—	—	—	—	★★★★	—	N	N	S
	Infiniti	EX35 RWD	SW	—	—	—	—	—	—	—	★★★★	—	0	0
EX35 AWD		SW	—	—	—	—	—	—	—	★★★★	—	0	0	S
FX35 RWD		SUV	—	—	—	—	—	—	—	—	—	0	0	S
FX35 AWD		SUV	—	—	—	—	—	—	—	—	—	0	0	S
FX50 RWD		SUV	—	—	—	—	—	—	—	—	—	0	0	S
FX50 AWD		SUV	—	—	—	—	—	—	—	—	—	0	0	S
G25 RWD		4 DR	—	—	—	—	—	—	—	★★★★★	—	N	N	S
G25 AWD		4 DR	—	—	—	—	—	—	—	★★★★★	—	N	N	S
G37 RWD		2 DR	—	—	—	—	—	—	—	—	—	N	N	S
G37 RWD		Conv	—	—	—	—	—	—	—	—	—	N	N	S
G37 RWD		4 DR	—	—	—	—	—	—	—	★★★★★	—	N	N	S
G37 AWD		2 DR	—	—	—	—	—	—	—	—	—	N	N	S
G37 AWD		4 DR	—	—	—	—	—	—	—	★★★★★	—	N	N	S
M35 HEV RWD		4 DR	★★★★★	★★★	★★★★	★★★★	★★★★★	★★★★★	★★★★★	★★★★	★★★★	0	0	S
M37 FWD		4 DR	★★★★★	★★★	★★★★	★★★★	★★★★★	★★★★★	★★★★★	★★★★	★★★★	0	0	S
M37 AWD		4 DR	★★★★★	★★★	★★★★	★★★★	★★★★★	★★★★★	★★★★★	★★★★	★★★★	0	0	S
M56 FWD		4 DR	★★★★★	★★★	★★★★	★★★★	★★★★★	★★★★★	★★★★★	★★★★	★★★★	0	0	S
M56 AWD		4 DR	★★★★★	★★★	★★★★	★★★★	★★★★★	★★★★★	★★★★★	★★★★	★★★★	0	0	S
QX56 RWD		SUV	—	—	—	—	—	—	—	—	—	0	0	S
QX56 4WD		SUV	—	—	—	—	—	—	—	—	—	0	0	S

MAKE	MODEL	Body Style	RATINGS									SAFETY FEATURES		
			Frontal Crash (Driver)	Frontal Crash (Passenger)	Overall Frontal	Side Barrier (Driver)	Side Barrier (Passenger—Rear Seat)	Side Pole (Driver)	Overall Side	Rollover	Overall Vehicle Score	Lane Departure Warning	Forward Collision Warning	Electronic Stability Control
Jaguar	XF RWD	4 DR	—	—	—	—	—	—	—	—	—	N	N	S
	XJ (LWB) RWD	4 DR	—	—	—	—	—	—	—	—	—	N	N	S
	XJ (SWB) RWD	4 DR	—	—	—	—	—	—	—	—	—	N	N	S
	XK RWD	2 DR	—	—	—	—	—	—	—	—	—	N	N	S
	XK RWD	Conv	—	—	—	—	—	—	—	—	—	N	N	S
Jeep	Compass 2WD	SUV	—	—	—	—	—	—	—	—	★★★★	N	N	S
	Compass 4WD	SUV	—	—	—	—	—	—	—	—	★★★★	N	N	S
	Grand Cherokee 2WD	SUV	★★★★★	★★★★★	★★★★★	★★★★★	★★★★★	★★★★★	★★★★★	★★★★★	★★★★★	N	O	S
	Grand Cherokee 4WD	SUV	★★★★★	★★★★★	★★★★★	★★★★★	★★★★★	★★★★★	★★★★★	★★★★★	★★★★★	N	O	S
	Liberty 2WD	SUV	★★★	★★	★★	★★★★★	★★★★★	★	★★★★	★★★	★★★	N	N	S
	Liberty 4WD	SUV	★★★	★★	★★	★★★★★	★★★★★	★	★★★★	★★★	★★★	N	N	S
	Patriot 2WD	SUV	—	—	—	—	—	—	—	—	—	N	N	S
	Patriot 4WD	SUV	—	—	—	—	—	—	—	—	—	N	N	S
	Wrangler 4WD	SUV	—	—	—	—	—	—	—	★★★	—	N	N	S
	Wrangler Unlimited 4WD	SUV	—	—	—	—	—	—	—	★★★	—	N	N	S
	Kia	Forte FWD	2 DR	—	—	—	—	—	—	—	—	—	N	N
Forte FWD		4 DR	★★★★★	★★★	★★★★	★★★	★★★★★	★★	★★★★	★★★★	★★★★	N	N	S
Forte FWD		5 HB	★★★★★	★★★	★★★★	★★★	★★★★★	★★	★★★★	★★★★	★★★★	N	N	S
Optima FWD		4 DR	★★★★★	★★★★★	★★★★★	★★★	★★★★★	★★★★★	★★★★★	★★★★★	★★★★★	N	N	S
Optima Hybrid FWD		4 DR	★★★★★	★★★★★	★★★★★	★★★	★★★★★	★★★★★	★★★★★	★★★★★	★★★★★	N	N	S
Rio FWD		4 DR	★★★★	★★★★	★★★★	★★★★	★★★★★	★★★★★	★★★★★	★★★★	★★★★	N	N	S
Rio FWD		5 HB	★★★★	★★★★	★★★★	★★★★	★★★★★	★★★★★	★★★★★	★★★★	★★★★	N	N	S
Sedona FWD		VAN	—	—	—	—	—	—	—	★★★★	—	N	N	S
Sorento FWD		SUV	★★★★★	★★★★	★★★★	★★★★★	★★★★★	★★★★★	★★★★★	★★★★	★★★★	N	N	S
Sorento AWD		SUV	★★★★★	★★★★	★★★★	★★★★★	★★★★★	★★★★★	★★★★★	★★★★	★★★★	N	N	S
Soul FWD		SUV	★★★★	★★★★	★★★★	★★★★★	★★★★★	★★★★★	★★★★★	★★★★	★★★★	N	N	S
Sportage FWD		SUV	★★★★★	★★★★	★★★★★	★★★★★	★★★★★	★★★★★	★★★★★	★★★★	★★★★	N	N	S
Sportage AWD		SUV	★★★★★	★★★★	★★★★★	★★★★★	★★★★★	★★★★★	★★★★★	★★★★	★★★★★	N	N	S
Land Rover		LR2 4WD	SUV	—	—	—	—	—	—	—	—	—	N	N
	LR4 (5 Seat) 4WD	SUV	—	—	—	—	—	—	—	—	—	N	N	S
	LR4 (7 Seat) 4WD	SUV	—	—	—	—	—	—	—	—	—	N	N	S
	Range Rover 4WD	SUV	—	—	—	—	—	—	—	—	—	N	N	S

MAKE	MODEL	Body Style	RATINGS									SAFETY FEATURES			
			Frontal Crash (Driver)	Frontal Crash (Passenger)	Overall Frontal	Side Barrier (Driver)	Side Barrier (Passenger—Rear Seat)	Side Pole (Driver)	Overall Side	Rollover	Overall Vehicle Score	Lane Departure Warning	Forward Collision Warning	Electronic Stability Control	
Land Rover	Range Rover Evoque (3-Door) 4WD	SUV	-	-	-	-	-	-	-	-	-	-	N	N	S
	Range Rover Evoque (5-Door) 4WD	SUV	-	-	-	-	-	-	-	-	-	-	N	N	S
	Range Rover Sport 4WD	SUV	-	-	-	-	-	-	-	-	-	-	N	N	S
Lexus	CT200H FWD	5 HB	-	-	-	-	-	-	-	-	-	-	N	N	S
	ES350 FWD	4 DR	★★★★	★★★★	★★★★	★★★★★	★★	★★	★★	★★★★	★★★★	N	N	S	
	GS350 RWD	4 DR	-	-	-	-	-	-	-	-	-	-	N	N	S
	GS350 AWD	4 DR	-	-	-	-	-	-	-	-	-	-	N	N	S
	GS450H RWD	4 DR	-	-	-	-	-	-	-	-	-	-	N	N	S
	GX460 AWD	SUV	-	-	-	-	-	-	-	-	-	-	N	N	S
	HS250H FWD	4 DR	-	-	-	-	-	-	-	-	-	-	N	N	S
	IS F RWD	4 DR	-	-	-	-	-	-	-	-	-	-	N	N	S
	IS250 RWD	4 DR	-	-	-	-	-	-	-	★★★★★	-	-	N	N	S
	IS250 AWD	4 DR	-	-	-	-	-	-	-	★★★★★	-	-	N	N	S
	IS250C RWD	Conv	-	-	-	-	-	-	-	-	-	-	N	N	S
	IS350 RWD	4 DR	-	-	-	-	-	-	-	★★★★★	-	-	N	N	S
	IS350 AWD	4 DR	-	-	-	-	-	-	-	★★★★★	-	-	N	N	S
	IS350C RWD	Conv	-	-	-	-	-	-	-	-	-	-	N	N	S
	LFA RWD	2 DR	-	-	-	-	-	-	-	-	-	-	N	N	S
	LS460 RWD	4 DR	-	-	-	-	-	-	-	-	-	-	N	N	S
	LS460 AWD	4 DR	-	-	-	-	-	-	-	-	-	-	N	N	S
	LS460L RWD	4 DR	-	-	-	-	-	-	-	-	-	-	N	N	S
	LS460L AWD	4 DR	-	-	-	-	-	-	-	-	-	-	N	N	S
	LS600HL AWD	4 DR	-	-	-	-	-	-	-	-	-	-	N	N	S
	LX570 AWD	SUV	-	-	-	-	-	-	-	-	-	-	N	N	S
	RX350 FWD	SUV	★★★★	★★★★	★★★★	★★★★★	★★★★	★★★★★	★★★★★	★★★★★	★★★★	★★★★	N	N	S
RX350 AWD	SUV	★★★★	★★★★	★★★★	★★★★★	★★★★	★★★★★	★★★★★	★★★★★	★★★★	★★★★	N	N	S	
RX450H FWD	SUV	★★★★	★★★★	★★★★	★★★★★	★★★★	★★★★★	★★★★★	★★★★★	★★★★	★★★★	N	N	S	
RX450H AWD	SUV	★★★★	★★★★	★★★★	★★★★★	★★★★	★★★★★	★★★★★	★★★★★	★★★★	★★★★	N	N	S	
Lincoln	MKS FWD	4 DR	-	-	-	-	-	-	-	★★★★	-	-	N	N	S
	MKS AWD	4 DR	-	-	-	-	-	-	-	★★★★	-	-	N	N	S
	MKT FWD	SUV	-	-	-	-	-	-	-	★★★★	-	-	N	N	S
	MKT AWD	SUV	-	-	-	-	-	-	-	★★★★	-	-	N	N	S

MAKE	MODEL	Body Style	RATINGS									SAFETY FEATURES			
			Frontal Crash (Driver)	Frontal Crash (Passenger)	Overall Frontal	Side Barrier (Driver)	Side Barrier (Passenger—Rear Seat)	Side Pole (Driver)	Overall Side	Rollover	Overall Vehicle Score	Lane Departure Warning	Forward Collision Warning	Electronic Stability Control	
Lincoln	MKX FWD	SUV	★★★	★★★	★★★	★★★★★	★★★★★	★★★★★	★★★★★	★★★★★	★★★★	★★★★	N	0	S
	MKX AWD	SUV	★★★	★★★	★★★	★★★★★	★★★★★	★★★★★	★★★★★	★★★★★	★★★★	★★★★	N	0	S
	MKZ FWD	4 DR	★★★★	★★★	★★★	★★★★★	★★★	★★★★	★★★★	★★★★	★★★★	★★★★	N	N	S
	MKZ AWD	4 DR	★★★★	★★★	★★★	★★★★★	★★★	★★★★	★★★★	★★★★★	★★★★	★★★★	N	N	S
	MKZ HEV FWD	4 DR	★★★	★★★★	★★★	★★★★★	★★★	★★★★	★★★★	★★★★	★★★★	★★★★	N	N	S
	Navigator 4x2	SUV	★★★	★★★★	★★★★	★★★★★	★★★★★	★★	★★★★★	★★★	★★★★	★★★★	N	N	S
	Navigator 4X2 Extended	SUV	★★★	★★★★	★★★★	★★★★★	★★★★★	★★	★★★★★	★★★	★★★★	★★★★	N	N	S
	Navigator 4X4	SUV	★★★	★★★★	★★★★	★★★★★	★★★★★	★★	★★★★★	★★★★	★★★★	★★★★	N	N	S
	Navigator 4X4 Extended	SUV	★★★	★★★★	★★★★	★★★★★	★★★★★	★★	★★★★★	★★★★	★★★★	★★★★	N	N	S
Maybach	Maybach RWD	4 DR	—	—	—	—	—	—	—	—	—	N	N	S	
Mazda	CX-7 FWD	SUV	—	—	—	—	—	—	—	★★★★	—	N	N	S	
	CX-7 AWD	SUV	—	—	—	—	—	—	—	★★★★	—	N	N	S	
	CX-9 FWD	SUV	—	—	—	—	—	—	—	★★★★	—	N	N	S	
	CX-9 AWD	SUV	—	—	—	—	—	—	—	★★★★	—	N	N	S	
	Mazda2 FWD	5 HB	—	—	—	—	—	—	—	—	—	N	N	S	
	Mazda3 FWD	4 DR	★★★★★	★★★★	★★★★★	★★★★	★★	★★★	★★★	★★★★	★★★★	N	N	S	
	Mazda3 FWD	5 HB	★★★★★	★★★★	★★★★★	★★★★	★★	★★★	★★★	★★★★	★★★★	N	N	S	
	Mazda5 FWD	SW	—	—	—	—	—	—	—	—	—	—	N	N	S
	Mazda6 FWD	4 DR	★★★★	★★★	★★★	★★★★★	★★★★	★★★	★★★★	★★★★★	★★★★	N	N	S	
	MX-5 RWD	Conv	—	—	—	—	—	—	—	—	—	—	N	N	S
Mercedes-Benz	B-Class RWD	4 DR	—	—	—	—	—	—	—	—	—	N	N	S	
	C-Class RWD	4 DR	—	—	—	—	—	—	★★★★	—	★★★★	—	N	N	S
	C-Class AWD	4 DR	—	—	—	—	—	—	★★★★	—	★★★★	—	N	N	S
	CL-Class RWD	2 DR	—	—	—	—	—	—	—	—	—	—	0	0	S
	CL-Class AWD	2 DR	—	—	—	—	—	—	—	—	—	—	0	0	S
	CLS-Class RWD	4 DR	—	—	—	—	—	—	—	—	—	—	0	0	S
	CLS-Class AWD	4 DR	—	—	—	—	—	—	—	—	—	—	0	0	S
	E-Class RWD	2 DR	—	—	—	—	—	—	—	—	—	—	0	0	S
	E-Class RWD	4 DR	—	—	—	—	—	—	—	—	★★★★★	—	0	0	S
	E-Class AWD	2 DR	—	—	—	—	—	—	—	—	—	—	0	0	S
	E-Class AWD	4 DR	—	—	—	—	—	—	—	—	★★★★★	—	0	0	S
	E-Class Cabriolet RWD	2 DR	—	—	—	—	—	—	—	—	—	—	0	0	S

MAKE	MODEL	Body Style	RATINGS									SAFETY FEATURES		
			Frontal Crash (Driver)	Frontal Crash (Passenger)	Overall Frontal	Side Barrier (Driver)	Side Barrier (Passenger—Rear Seat)	Side Pole (Driver)	Overall Side	Rollover	Overall Vehicle Score	Lane Departure Warning	Forward Collision Warning	Electronic Stability Control
Mercedes-Benz	G-Class AWD	SUV	-	-	-	-	-	-	-	-	-	N	N	S
	GL-Class RWD	SUV	-	-	-	-	-	-	-	-	-	N	N	S
	GL-Class AWD	SUV	-	-	-	-	-	-	-	-	-	N	N	S
	GLK-Class RWD	4 DR	-	-	-	-	-	-	-	-	-	N	N	S
	GLK-Class AWD	4 DR	-	-	-	-	-	-	-	-	-	N	N	S
	ML-Class AWD	SUV	-	-	-	-	-	-	-	-	-	0	0	S
	R-Class RWD	SUV	-	-	-	-	-	-	-	-	-	N	N	S
	R-Class AWD	SUV	-	-	-	-	-	-	-	-	-	N	N	S
	S-Class RWD	4 DR	-	-	-	-	-	-	-	-	-	0	0	S
	S-Class AWD	4 DR	-	-	-	-	-	-	-	-	-	0	0	S
	SL-Class RWD	Conv	-	-	-	-	-	-	-	-	-	N	N	S
	SLK-Class RWD	Conv	-	-	-	-	-	-	-	-	-	N	N	S
	SLS AMG RWD (Same for Conv)	2 DR	-	-	-	-	-	-	-	-	-	N	N	S
	Sprinter 2500 RWD	VAN	-	-	-	-	-	-	-	★	-	-	-	S
	Sprinter 2500 RWD Cargo	VAN	-	-	-	-	-	-	-	-	-	-	-	S
	Sprinter 2500 Mixto RWD	VAN	-	-	-	-	-	-	-	-	-	-	-	S
	Sprinter 3500 RWD Cargo	VAN	-	-	-	-	-	-	-	-	-	-	-	S
	Sprinter 3500 RWD Cab Chassis	Cab	-	-	-	-	-	-	-	-	-	-	-	S
MINI	Clubman FWD	SW	-	-	-	-	-	-	-	-	-	N	N	S
	Clubman S FWD	SW	-	-	-	-	-	-	-	-	-	N	N	S
	Clubman S JCW FWD	SW	-	-	-	-	-	-	-	-	-	N	N	S
	Cooper FWD	2 DR	-	-	-	-	-	-	-	★★★★★	-	N	N	S
	Cooper FWD	Conv	-	-	-	-	-	-	-	★★★★★	-	N	N	S
	Cooper S FWD	2 DR	-	-	-	-	-	-	-	★★★★★	-	N	N	S
	Cooper S FWD	Conv	-	-	-	-	-	-	-	★★★★★	-	N	N	S
	Cooper S JCW FWD	2 DR	-	-	-	-	-	-	-	★★★★★	-	N	N	S
	Cooper S JCW FWD	Conv	-	-	-	-	-	-	-	★★★★★	-	N	N	S
	Cooper Countryman FWD	4 DR	-	-	-	-	-	-	-	-	-	N	N	S
	Cooper S Countryman FWD	4 DR	-	-	-	-	-	-	-	-	-	N	N	S
	Cooper S Countryman AWD	4 DR	-	-	-	-	-	-	-	-	-	N	N	S
	Cooper Roadster FWD	2 DR	-	-	-	-	-	-	-	-	-	N	N	S
	Cooper S Roadster FWD	2 DR	-	-	-	-	-	-	-	-	-	N	N	S

MAKE	MODEL	Body Style	RATINGS									SAFETY FEATURES		
			Frontal Crash (Driver)	Frontal Crash (Passenger)	Overall Frontal	Side Barrier (Driver)	Side Barrier (Passenger—Rear Seat)	Side Pole (Driver)	Overall Side	Rollover	Overall Vehicle Score	Lane Departure Warning	Forward Collision Warning	Electronic Stability Control
MINI	Cooper JCW Roadster FWD	2 DR	—	—	—	—	—	—	—	—	—	N	N	S
	JCW FWD	2 DR	—	—	—	—	—	—	—	—	—	N	N	S
Mitsubishi	Eclipse FWD	3 HB	—	—	—	—	—	—	—	—	—	N	N	S
	Eclipse Spyder FWD	Conv	—	—	—	—	—	—	—	—	—	N	N	S
	Galant FWD	4 DR	—	—	—	—	—	—	—	★★★★	—	N	N	S
	IMIEV RWD	5 HB	★★★★	★★★★	★★★★	★★★★★	★★	★★★★★	★★★	★★★★	★★★★	N	N	S
	Lancer FWD	4 DR	★★★★★	★★★★	★★★★	★★★★★	★★★	★★★★★	★★★★	★★★★	★★★★	N	N	S
	Lancer FWD	5 HB	★★★★★	★★★★	★★★★	★★★★★	★★★	★★★★★	★★★★	★★★★	★★★★	N	N	S
	Lancer AWD	4 DR	★★★★★	★★★★	★★★★	★★★★★	★★★	★★★★★	★★★★	★★★★	★★★★	N	N	S
	Lancer AWD	5 HB	★★★★★	★★★★	★★★★	★★★★★	★★★	★★★★★	★★★★	★★★★	★★★★	N	N	S
	Lancer Evolution AWD	4 DR	—	—	—	—	—	—	—	—	—	N	N	S
	Outlander FWD	SUV	★★★★	★★★	★★★★	★★★★★	★★★★	★★★★★	★★★★	★★★★	★★★★	N	N	S
	Outlander AWD	SUV	★★★★	★★★	★★★★	★★★★★	★★★★	★★★★★	★★★★	★★★★	★★★★	N	N	S
	Outlander Sport FWD	SUV	★★★★	★★★★	★★★★	★★★★★	★★★★	★★★★★	★★★★	★★★★	★★★★	N	N	S
	Outlander Sport AWD	SUV	★★★★	★★★★	★★★★	★★★★★	★★★★	★★★★★	★★★★	★★★★	★★★★	N	N	S
	Nissan	370Z RWD	2 DR	—	—	—	—	—	—	—	—	—	N	N
370Z Roadster RWD		Conv	—	—	—	—	—	—	—	—	—	N	N	S
Altima FWD		2 DR	—	—	—	—	—	—	—	★★★★★	—	N	N	S
Altima FWD		4 DR	★★★★	★★★★	★★★★	★★★★	★★★★★	★★★★★	★★★★★	★★★★	★★★★	N	N	S
Armada RWD		SUV	—	—	—	—	—	—	—	★★★	—	N	N	S
Armada 4WD		SUV	—	—	—	—	—	—	—	★★★	—	N	N	S
Cube FWD		VAN	—	—	—	—	—	—	—	★★★★	—	N	N	S
Frontier Crew Cab RWD		PU	—	—	—	—	—	—	—	★★★	—	N	N	S
Frontier Crew Cab 4WD		PU	—	—	—	—	—	—	—	★★★★	—	N	N	S
Frontier King Cab RWD		PU	—	—	—	—	—	—	—	★★★	—	N	N	S
Frontier King Cab 4WD		PU	—	—	—	—	—	—	—	★★★★	—	N	N	S
GTR AWD		2 DR	—	—	—	—	—	—	—	—	—	N	N	S
Juke FWD		SUV	★★★★	★★★	★★★	★★★★	★★★★★	★★★★★	★★★★★	★★★★	★★★★	N	N	S
Juke AWD		SUV	★★★★	★★★	★★★	★★★★	★★★★★	★★★★★	★★★★★	★★★★	★★★★	N	N	S
Leaf FWD		5 HB	★★★★	★★★★	★★★★	★★★★★	★★★★★	★★★★	★★★★★	★★★★	★★★★★	N	N	S
Maxima FWD		4 DR	★★★★	★★	★★★	★★★	★★★★★	★★★★★	★★★★★	★★★★★	★★★★	N	N	S
Murano FWD		SUV	★★★★	★★★	★★★★	★★★★★	★★★★	★★★★	★★★★★	★★★★	★★★★	N	N	S

MAKE	MODEL	Body Style	RATINGS									SAFETY FEATURES			
			Frontal Crash (Driver)	Frontal Crash (Passenger)	Overall Frontal	Side Barrier (Driver)	Side Barrier (Passenger—Rear Seat)	Side Pole (Driver)	Overall Side	Rollover	Overall Vehicle Score	Lane Departure Warning	Forward Collision Warning	Electronic Stability Control	
Nissan	Murano AWD	SUV	★★★★	★★★	★★★★	★★★★★	★★★★	★★★★	★★★★★	★★★★	★★★★	★★★★	N	N	S
	Murano Cross AWD	Conv	—	—	—	—	—	—	—	—	—	—	N	N	S
	NV1500 RWD	VAN	—	—	—	—	—	—	—	—	—	—	N	N	S
	NV2500 RWD	VAN	—	—	—	—	—	—	—	—	—	—	—	—	S
	NV3500 RWD	VAN	—	—	—	—	—	—	—	—	—	—	N	N	S
	NV3500 RWD	VAN	—	—	—	—	—	—	—	—	—	—	N	N	S
	Pathfinder RWD	SUV	—	—	—	—	—	—	—	—	—	—	N	N	S
	Pathfinder 4WD	SUV	—	—	—	—	—	—	—	—	—	—	N	N	S
	Quest FWD	VAN	—	—	—	—	—	—	—	—	—	—	N	N	S
	Rogue FWD	SUV	★★★★	★★★	★★★★	★★★★★	★★★★★	★★★★★	★★★★★	★★★★	★★★★	★★★★	N	N	S
	Rogue AWD	SUV	★★★★	★★★	★★★★	★★★★★	★★★★★	★★★★★	★★★★★	★★★★	★★★★	★★★★	N	N	S
	Sentra FWD	4 DR	★★★★	★★★	★★★	★★★★★	★★	★★★★★	★★★	★★★★	★★★★	★★★★	N	N	S
	Titan Crew Cab RWD	PU	—	—	—	—	—	—	—	—	—	—	N	N	S
	Titan Crew Cab 4WD	PU	—	—	—	—	—	—	—	—	—	—	N	N	S
	Titan King Cab RWD	PU	—	—	—	—	—	—	—	—	—	—	N	N	S
	Titan King Cab 4WD	PU	—	—	—	—	—	—	—	—	—	—	N	N	S
	Versa FWD	4 DR	★★★★	★★★	★★★	★★★	★★★★★	★★★★★	★★★★★	★★★★	★★★★	★★★★	N	N	S
	Versa FWD	5 HB	★★★	★★	★★★	—	—	—	—	—	—	—	N	N	S
	Xterra RWD	SUV	—	—	—	—	—	—	—	—	—	—	N	N	S
	Xterra 4WD	SUV	—	—	—	—	—	—	—	—	—	—	N	N	S
Porsche	911 Carrera RWD	2 DR	—	—	—	—	—	—	—	—	—	—	N	N	S
	911 Carrera RWD	Conv	—	—	—	—	—	—	—	—	—	—	N	N	S
	911 Carrera 4 AWD	2 DR	—	—	—	—	—	—	—	—	—	—	N	N	S
	911 Carrera 4 AWD	Conv	—	—	—	—	—	—	—	—	—	—	N	N	S
	911 Carrera 4S AWD	2 DR	—	—	—	—	—	—	—	—	—	—	N	N	S
	911 Carrera 4S AWD	Conv	—	—	—	—	—	—	—	—	—	—	N	N	S
	911 Carrera S RWD	2 DR	—	—	—	—	—	—	—	—	—	—	N	N	S
	911 Carrera S RWD	Conv	—	—	—	—	—	—	—	—	—	—	N	N	S
	911 GTS RWD	2 DR	—	—	—	—	—	—	—	—	—	—	—	—	—
	911 GTS RWD	Conv	—	—	—	—	—	—	—	—	—	—	—	—	—
	911 GTS 4 AWD	2 DR	—	—	—	—	—	—	—	—	—	—	—	—	—
	911 GTS 4 AWD	Conv	—	—	—	—	—	—	—	—	—	—	—	—	—

MAKE	MODEL	Body Style	RATINGS									SAFETY FEATURES			
			Frontal Crash (Driver)	Frontal Crash (Passenger)	Overall Frontal	Side Barrier (Driver)	Side Barrier (Passenger—Rear Seat)	Side Pole (Driver)	Overall Side	Rollover	Overall Vehicle Score	Lane Departure Warning	Forward Collision Warning	Electronic Stability Control	
Porsche	911 Targa 4 AWD	2 DR	-	-	-	-	-	-	-	-	-	-	-	-	-
	911 Targa 4S AWD	2 DR	-	-	-	-	-	-	-	-	-	N	N	S	-
	911 Turbo AWD	2 DR	-	-	-	-	-	-	-	-	-	-	-	-	-
	911 Turbo AWD	Conv	-	-	-	-	-	-	-	-	-	-	-	-	-
	911 Turbo S AWD	2 DR	-	-	-	-	-	-	-	-	-	-	-	-	-
	911 Turbo S AWD	Conv	-	-	-	-	-	-	-	-	-	-	-	-	-
	Boxster RWD	Conv	-	-	-	-	-	-	-	-	-	N	N	S	-
	Boxster S RWD	Conv	-	-	-	-	-	-	-	-	-	N	N	S	-
	Cayenne AWD	SUV	-	-	-	-	-	-	-	-	-	N	N	S	-
	Cayenne GTS AWD	SUV	-	-	-	-	-	-	-	-	-	-	-	-	-
	Cayenne S AWD	SUV	-	-	-	-	-	-	-	-	-	N	N	S	-
	Cayenne S Hybrid AWD	SUV	-	-	-	-	-	-	-	-	-	N	N	S	-
	Cayenne Turbo AWD	SUV	-	-	-	-	-	-	-	-	-	N	N	S	-
	Cayman RWD	2 DR	-	-	-	-	-	-	-	-	-	N	N	S	-
	Cayman R RWD	2 DR	-	-	-	-	-	-	-	-	-	-	-	-	-
	Cayman S RWD	2 DR	-	-	-	-	-	-	-	-	-	N	N	S	-
	Panamera RWD	5 HB	-	-	-	-	-	-	-	-	-	N	N	S	-
	Panamera 4 AWD	5 HB	-	-	-	-	-	-	-	-	-	N	N	S	-
	Panamera 4S AWD	5 HB	-	-	-	-	-	-	-	-	-	N	N	S	-
	Panamera S RWD	5 HB	-	-	-	-	-	-	-	-	-	N	N	S	-
Panamera S Hybrid AWD	5 HB	-	-	-	-	-	-	-	-	-	-	-	-	-	
Panamera Turbo AWD	5 HB	-	-	-	-	-	-	-	-	-	N	N	S	-	
Panamera Turbo S AWD	5 HB	-	-	-	-	-	-	-	-	-	N	N	S	-	
RAM	1500 Regular Cab 2WD	PU	★★★★	★★★★	★★★★	★★★★★	-	★	★★★	★★★★	★★★	N	N	S	-
	1500 Regular Cab 4WD	PU	★★★★	★★★★	★★★★	★★★★★	-	★	★★★	★★★	★★★	N	N	S	-
	1500 Crew Cab 2WD	PU	★★★★	★★★★	★★★★	★★★★★	★★★★★	★	★★★★★	★★★★	★★★★	N	N	S	-
	1500 Crew Cab 4WD	PU	★★★★	★★★★	★★★★	★★★★★	★★★★★	★	★★★★★	★★★	★★★★	N	N	S	-
	1500 Quad Cab 2WD	PU	★★★★	★★★★	★★★★	★★★★★	★★★★★	★	★★★★★	★★★★	★★★★	N	N	S	-
	1500 Quad Cab 4WD	PU	★★★★	★★★★	★★★★	★★★★★	★★★★★	★	★★★★★	★★★	★★★★	N	N	S	-
	2500 Regular Cab 2WD	PU	-	-	-	-	-	-	-	★★★★	-	N	N	S	-
	2500 Regular Cab 4WD	PU	-	-	-	-	-	-	-	★★★	-	N	N	S	-
	2500 Crew Cab 4WD	PU	★★	★★★	★★	★★★★★	★★★★★	★★	★★★★★	★★★	★★★	N	N	S	-

MAKE	MODEL	Body Style	RATINGS									SAFETY FEATURES			
			Frontal Crash (Driver)	Frontal Crash (Passenger)	Overall Frontal	Side Barrier (Driver)	Side Barrier (Passenger—Rear Seat)	Side Pole (Driver)	Overall Side	Rollover	Overall Vehicle Score	Lane Departure Warning	Forward Collision Warning	Electronic Stability Control	
RAM	2500 Extended Cab 2WD	PU	—	—	—	—	—	—	—	—	★★★★	—	N	N	S
	2500 Extended Cab 2WD	PU	★★	★★★★	★★	★★★★★	★★★★★	★★	★★★★★	★★★★	★★★	N	N	S	
	2500 Extended Cab 4WD	PU	—	—	—	—	—	—	—	—	★★★	—	N	N	S
Rolls-Royce	Ghost RWD	4 DR	—	—	—	—	—	—	—	—	—	—	O	N	S
	Ghost EWB RWD	4 DR	—	—	—	—	—	—	—	—	—	—	O	N	S
	Phantom RWD	2 DR	—	—	—	—	—	—	—	—	—	—	N	N	S
	Phantom RWD	Conv	—	—	—	—	—	—	—	—	—	—	N	N	S
	Phantom RWD	4 DR	—	—	—	—	—	—	—	—	—	—	N	N	S
	Phantom EWB RWD	4 DR	—	—	—	—	—	—	—	—	—	—	N	N	S
SAAB	9-3 FWD	4 DR	—	—	—	—	—	—	—	—	★★★★	—	N	N	S
	9-3 FWD	SW	—	—	—	—	—	—	—	—	★★★★	—	N	N	S
	9-3 FWD	Conv	—	—	—	—	—	—	—	—	—	—	N	N	S
	9-3 AWD	SW	—	—	—	—	—	—	—	—	★★★★	—	N	N	S
	9-3 AWD	4 DR	—	—	—	—	—	—	—	—	★★★★	—	N	N	S
	9-4X FWD	SUV	★★★★★	★★★★	★★★★★	★★★★★	★★★★★	★★★★	★★★★★	★★★★	★★★★★	N	N	S	
	9-4X AWD	SUV	★★★★★	★★★★	★★★★★	★★★★★	★★★★★	★★★★	★★★★★	★★★★	★★★★★	N	N	S	
	9-5 FWD	4 DR	—	—	—	—	—	—	—	—	—	—	N	N	S
	9-5 AWD	4 DR	—	—	—	—	—	—	—	—	—	—	N	N	S
	9-5 AWD	SW	—	—	—	—	—	—	—	—	—	—	N	N	S
SMART	Fortwo RWD	2 DR	—	—	—	—	—	—	—	—	★★★	—	N	N	S
	Fortwo Cabriolet RWD	2 DR	—	—	—	—	—	—	—	—	★★★	—	N	N	S
	Fortwo ED RWD	2 DR	—	—	—	—	—	—	—	—	—	—	—	—	S
	Fortwo ED Cabriolet RWD	2 DR	—	—	—	—	—	—	—	—	—	—	—	—	S
Subaru	Forester AWD	SUV	★★★★	★★★★★	★★★★	★★★★★	★★★★	★★	★★★★	★★★★	★★★★	N	N	S	
	Impreza AWD	4 DR	★★★★★	★★★	★★★★	★★★★★	★★★	★★★★	★★★★	★★★★★	★★★★	N	N	S	
	Impreza AWD	SW	★★★★★	★★★	★★★★	★★★★★	★★★	★★★★	★★★★	★★★★★	★★★★	N	N	S	
	Impreza WRX/STI AWD	4 DR	—	—	—	—	—	—	—	★★★★	—	N	N	S	
	Impreza WRX/STI AWD	SW	—	—	—	—	—	—	—	★★★★	—	N	N	S	
	Legacy AWD	4 DR	★★★★★	★★★★	★★★★	—	—	★★★	—	★★★★★	—	N	N	S	
	Outback AWD	SUV	★★★★★	★★★★	★★★★	★★★★★	★★★★	★★★	★★★★	★★★★	★★★★	N	N	S	
	Tribeca AWD	SUV	—	—	—	—	—	—	—	—	★★★★	—	N	N	S
	Equator Crew Cab RWD	PU	—	—	—	—	—	—	—	—	★★★	—	N	N	S

MAKE	MODEL	Body Style	RATINGS									SAFETY FEATURES		
			Frontal Crash (Driver)	Frontal Crash (Passenger)	Overall Frontal	Side Barrier (Driver)	Side Barrier (Passenger—Rear Seat)	Side Pole (Driver)	Overall Side	Rollover	Overall Vehicle Score	Lane Departure Warning	Forward Collision Warning	Electronic Stability Control
Suzuki	Equator Crew Cab 4WD	PU	-	-	-	-	-	-	-	★★★★	-	N	N	S
	Equator Extended Cab RWD	PU	-	-	-	-	-	-	-	★★★	-	N	N	S
	Equator Extended Cab 4WD	PU	-	-	-	-	-	-	-	★★★★	-	N	N	S
	Grand Vitara RWD	SUV	-	-	-	-	-	-	-	★★★★	-	N	N	S
	Grand Vitara AWD	SUV	-	-	-	-	-	-	-	★★★★	-	N	N	S
	Kizashi FWD	4 DR	-	-	-	-	-	-	-	★★★★	-	N	N	S
	Kizashi AWD	4 DR	-	-	-	-	-	-	-	★★★★	-	N	N	S
	SX4 FWD	5 HB	★★★★	★★★	★★★★	★★★★★	★★	★★★	★★★	★★★★	★★★★	N	N	S
	SX4 FWD	4 DR	★★★★	★★★	★★★★	★★★★★	★★	★★★	★★★	★★★★	★★★★	N	N	S
SX4 AWD	5 HB	★★★★	★★★	★★★★	★★★★★	★★	★★★	★★★	★★★★	★★★★	N	N	S	
Toyota	4Runner 2WD	SUV	★★★★	★★★	★★★★	★★★★★	★★★★★	★★★★★	★★★★★	★★★	★★★★	N	N	S
	4Runner 4WD	SUV	★★★★	★★★	★★★★	★★★★★	★★★★★	★★★★★	★★★★★	★★★	★★★★	N	N	S
	Avalon FWD	4 DR	-	-	-	-	-	-	-	★★★★	-	N	N	S
	Camry FWD	4 DR	★★★★★	★★★★	★★★★	★★★★★	★★★★★	★★★★★	★★★★★	★★★★	★★★★★	N	N	S
	Camry HV FWD	4 DR	★★★★★	★★★★	★★★★	★★★★★	★★★★★	★★★★★	★★★★★	★★★★	★★★★★	N	N	S
	Corolla FWD	4 DR	★★★★★	★★★★	★★★★	★★★★★	★★★★★	★★★	★★★★★	★★★★	★★★★	N	N	S
	FJ Cruiser 2WD	SUV	-	-	-	-	-	-	-	★★★	-	N	N	S
	FJ Cruiser 4WD	SUV	-	-	-	-	-	-	-	★★★	-	N	N	S
	Highlander FWD	SUV	★★★★	★★★★	★★★★	★★★★★	★★★★★	★★★★★	★★★★★	★★★★	★★★★	N	N	S
	Highlander AWD	SUV	★★★★	★★★★	★★★★	★★★★★	★★★★★	★★★★★	★★★★★	★★★★	★★★★	N	N	S
	Highlander HV AWD	SUV	★★★★	★★★★	★★★★	★★★★★	★★★★★	★★★★★	★★★★★	★★★★	★★★★	N	N	S
	Landcruiser AWD	SUV	-	-	-	-	-	-	-	-	-	N	N	S
	Matrix FWD	SW	-	-	-	-	-	-	-	★★★★	-	N	N	S
	Matrix AWD	SW	-	-	-	-	-	-	-	★★★★	-	N	N	S
	Prius FWD	5 HB	★★★★★	★★★★	★★★★	★★★★★	★★★★★	★★★★★	★★★★★	★★★★	★★★★★	N	N	S
	Prius Plug-In FWD	5 HB	★★★★★	★★★★	★★★★	★★★★★	★★★★★	★★★★★	★★★★★	★★★★	★★★★	N	N	S
	Prius V FWD	SW	-	-	-	-	-	-	-	-	-	N	N	S
	RAV4 FWD	SUV	★★★★	★★★★	★★★★	★★★★★	★★★★★	★★	★★★★★	★★★★	★★★★	N	N	S
	RAV4 AWD	SUV	★★★★	★★★★	★★★★	★★★★★	★★★★★	★★	★★★★★	★★★★	★★★★	N	N	S
	Scion IQ FWD	3 HB	★★★★	★★★	★★★★	★★★★	★★★	★★★★★	★★★	★★★★	★★★★	N	N	S
Scion TC FWD	3 HB	★★★★★	★★★★	★★★★	★★★★★	★★★★★	★★★★★	★★★★★	★★★★	★★★★★	N	N	S	
Scion XB FWD	SW	-	-	-	-	-	-	-	★★★★	-	N	N	S	

MAKE	MODEL	Body Style	RATINGS									SAFETY FEATURES		
			Frontal Crash (Driver)	Frontal Crash (Passenger)	Overall Frontal	Side Barrier (Driver)	Side Barrier (Passenger—Rear Seat)	Side Pole (Driver)	Overall Side	Rollover	Overall Vehicle Score	Lane Departure Warning	Forward Collision Warning	Electronic Stability Control
Toyota	Scion XD FWD	5 HB	—	—	—	—	—	—	—	—	—	N	N	S
	Sequoia 2WD	SUV	—	—	—	—	—	—	—	★★★★	—	N	N	S
	Sequoia 4WD	SUV	—	—	—	—	—	—	—	★★★★	—	N	N	S
	Sienna FWD	VAN	★★★★★	★★★	★★★★	★★★★★	★★★★★	★★★★	★★★★★	★★★★	★★★★	N	N	S
	Sienna AWD	VAN	★★★★★	★★★	★★★★	★★★★★	★★★★★	★★★★	★★★★★	★★★★	★★★★	N	N	S
	Tacoma Regular Cab 2WD	PU	—	—	—	—	—	—	—	★★★★	—	N	N	S
	Tacoma Regular Cab 4WD	PU	—	—	—	—	—	—	—	★★★★	—	N	N	S
	Tacoma Crew Cab 2WD	PU	★★★★	★★★	★★★	★★★★	★★★★★	★★★★	★★★★★	★★★★	★★★★	N	N	S
	Tacoma Crew Cab 4WD	PU	★★★★	★★★	★★★	★★★★	★★★★★	★★★★	★★★★★	★★★★	★★★★	N	N	S
	Tacoma Extended Cab 2WD	PU	—	—	—	—	—	—	—	★★★★	—	N	N	S
	Tacoma Extended Cab 4WD	PU	—	—	—	—	—	—	—	★★★★	—	N	N	S
	Tundra Regular Cab 2WD	PU	★★★★	★★★	★★★★	★★★★★	—	★★★★★	★★★★★	★★★	★★★★	N	N	S
	Tundra Regular Cab 4WD	PU	★★★★	★★★	★★★★	★★★★★	—	★★★★★	★★★★★	★★★★	★★★★	N	N	S
	Tundra Crew Cab 2WD	PU	★★★★	★★★	★★★	★★★★★	★★★★★	★★★★★	★★★★★	★★★	★★★★	N	N	S
	Tundra Crew Cab 4WD	PU	★★★★	★★★	★★★	★★★★★	★★★★★	★★★★★	★★★★★	★★★★	★★★★	N	N	S
	Tundra Extended Cab 2WD	PU	★★★★	★★★	★★★★	★★★★★	★★★★★	★★★★★	★★★★★	★★★	★★★★	N	N	S
	Tundra Extended Cab 4WD	PU	★★★★	★★★	★★★★	★★★★★	★★★★★	★★★★★	★★★★★	★★★★	★★★★	N	N	S
	Venza FWD	SUV	★★★★	★★	★★★	★★★★★	★★★★★	★★★★★	★★★★★	★★★★	★★★★	N	N	S
	Venza AWD	SUV	★★★★	★★	★★★	★★★★★	★★★★★	★★★★★	★★★★★	★★★★	★★★★	N	N	S
	Yaris FWD	3 HB	—	—	—	—	—	—	—	—	—	N	N	S
Yaris FWD	4 DR	—	—	—	—	—	—	—	★★★★	—	N	N	S	
Yaris FWD	5 HB	★★★★★	★★★★★	★★★★★	★★★★★	★★★★★	★★★★★	★★★★★	★★★★★	★★★★★	N	N	S	
Volkswagen	Beetle FWD	2 DR	★★★★	★★★★	★★★★	★★★★★	★★★★★	★★★★★	★★★★★	★★★★	★★★★	N	N	S
	CC FWD	4 DR	—	—	—	—	—	—	—	★★★★	—	N	N	S
	CC AWD	4 DR	—	—	—	—	—	—	—	★★★★	—	N	N	S
	EOS FWD	Conv	—	—	—	—	—	—	—	—	—	N	N	S
	GOLF FWD	2 DR	—	—	—	—	—	—	—	—	—	N	N	S
	GOLF FWD	4 DR	—	—	—	—	—	—	—	★★★★	—	N	N	S
	GTI FWD	2 DR	—	—	—	—	—	—	—	—	—	N	N	S
	GTI FWD	4 DR	—	—	—	—	—	—	—	★★★★	—	N	N	S
	Jetta FWD	4 DR	★★★★	★★★★	★★★★	★★★★	★★★★★	★★★★★	★★★★★	★★★★	★★★★	N	N	S
	Jetta FWD	SW	—	—	—	—	—	—	—	★★★★	—	N	N	S

MAKE	MODEL	Body Style	RATINGS									SAFETY FEATURES			
			Frontal Crash (Driver)	Frontal Crash (Passenger)	Overall Frontal	Side Barrier (Driver)	Side Barrier (Passenger—Rear Seat)	Side Pole (Driver)	Overall Side	Rollover	Overall Vehicle Score	Lane Departure Warning	Forward Collision Warning	Electronic Stability Control	
Volkswagen	Passat FWD	4 DR	★★★★★	★★★★★	★★★★★	★★★★	★★★★★	★★★★★	★★★★★	★★★★★	★★★★	★★★★★	N	N	S
	Routan FWD	VAN	—	—	—	—	—	—	—	—	★★★★	—	N	N	S
	Tiguan FWD	SUV	—	—	—	—	—	—	—	—	★★★★	—	N	N	S
	Tiguan AWD	SUV	—	—	—	—	—	—	—	—	★★★★	—	N	N	S
	Touareg AWD	SUV	—	—	—	—	—	—	—	—	—	—	N	N	S
Volvo	C30 FWD	3 HB	—	—	—	—	—	—	—	—	—	—	N	N	S
	C70 FWD	Conv	—	—	—	—	—	—	—	—	—	—	N	N	S
	S60 FWD	4 DR	★★★★★	★★★★★	★★★★★	★★★★★	★★★★★	★★★★★	★★★★★	★★★★★	★★★★★	★★★★★	0	0	S
	S60 AWD	4 DR	★★★★★	★★★★★	★★★★★	★★★★★	★★★★★	★★★★★	★★★★★	★★★★★	★★★★★	★★★★★	0	0	S
	S80 FWD	4 DR	—	—	—	—	—	—	—	—	—	—	0	0	S
	S80 AWD	4 DR	—	—	—	—	—	—	—	—	—	—	0	0	S
	XC60 FWD	SUV	★★★★★	★★★★★	★★★★★	★★★★★	★★★★★	★★★★★	★★★★★	★★★★★	★★★★	★★★★★	0	0	S
	XC60 AWD	SUV	★★★★★	★★★★★	★★★★★	★★★★★	★★★★★	★★★★★	★★★★★	★★★★★	★★★★	★★★★★	0	0	S
	XC70 FWD	SW	—	—	—	—	—	—	—	—	—	—	0	0	S
	XC70 AWD	SW	—	—	—	—	—	—	—	—	—	—	0	0	S
	XC90 FWD	SUV	—	—	—	—	—	—	—	—	★★★★	—	N	N	S
	XC90 AWD	SUV	—	—	—	—	—	—	—	—	★★★★	—	N	N	S

BODY

CODE	DEFINITION
HB	Hatchback
PU	Pickup
SW	Station Wagon
Conv	Convertible
SAB	Side Air bag

RATINGS

CODE	DEFINITION
★	Rating Level
–	Not Rated

SAFETY

CODE	DEFINITION
N	No Information Provided
S	Standard Equipment
O	Optional Equipment

NOTE: Please visit SaferCar.gov for a complete listing of model year 2012 rollover ratings and vehicles that comply with NHTSA's Lane Departure Warning (LDW), Forward Collision Warning (FCW), and Electronic Stability Control (ESC) tests.



CODE KEY