



# Crop Progress & Condition

## Kansas Agricultural Statistics

Cooperating with the Kansas Department of Agriculture

PO Box 3534 • Topeka KS 66601-3534 • (785)233-2230 • www.nass.usda.gov/ks • nass-ks@nass.usda.gov

Released: January 28, 2013

Volume 13 No. 5

For the month of January 2013

**Agricultural Summary:** Temperature averages for the month of January over most of the State were two to five degrees above normal. Rainfall was received in most areas of the State, with all 53 stations recording at least trace amounts of moisture for the month, but none received an inch or more. The lightest amount was in the northwest where Goodland only received 0.12 inch. Great Bend and Salina, in the center of the state, both reported 0.94 inch for the highest precipitation amount. Temperatures varied widely during the month with a low of -5 degrees at Ulysses to a high of 75 in Elkhart. There were 14.5 days suitable for field work, compared to 16.6 days a year ago. Topsoil moisture supplies as of January 27 were rated 48 percent very short, 37 percent short, and 15 percent adequate, virtually unchanged from the beginning of the month. The Northwest District is still the driest district with 97 percent reported in the short to very short for topsoil moisture.

**Field Crop Report:** Limited moisture in most areas caused the condition of the **winter wheat** to decline during January. The condition of the crop was rated 14 percent very poor, 25 percent poor, 41 percent fair, 19 percent good, and 1 percent excellent. Wind damage was rated as 1 percent severe, 5 percent moderate, 13 percent light, and 81 percent with no damage, while freeze damage was rated as 1 percent severe, 4 percent moderate, 11 percent light, and 84 percent with no damage.

**Feed Supplies Report:** The range and pasture condition was rated 55 percent very poor, 30 percent poor, 13 percent fair, and 2 percent good. Feed grain supplies in Kansas were rated at 22 percent very short, 26 percent short, 51 percent adequate, and 1 percent surplus, while hay and forage supplies were rated at 37 percent very short, 37 percent short, 25 percent adequate, and 1 percent surplus. The stock water

supplies declined to 48 percent very short, 30 percent short, and 22 percent adequate. Livestock producers continue grazing cattle on crop residue and supplemental feeding. Due to the lack of significant rainfall, many producers are hauling water for livestock and are concerned about pasture conditions and low or dried stock pond levels.

### Kansas Wheat Conditions as of January 27, 2013

Crop	Very Poor	Poor	Fair	Good	Excellent
	Percent				
Winter Wheat	14	25	41	19	1
Range & Pasture	55	30	13	2	0

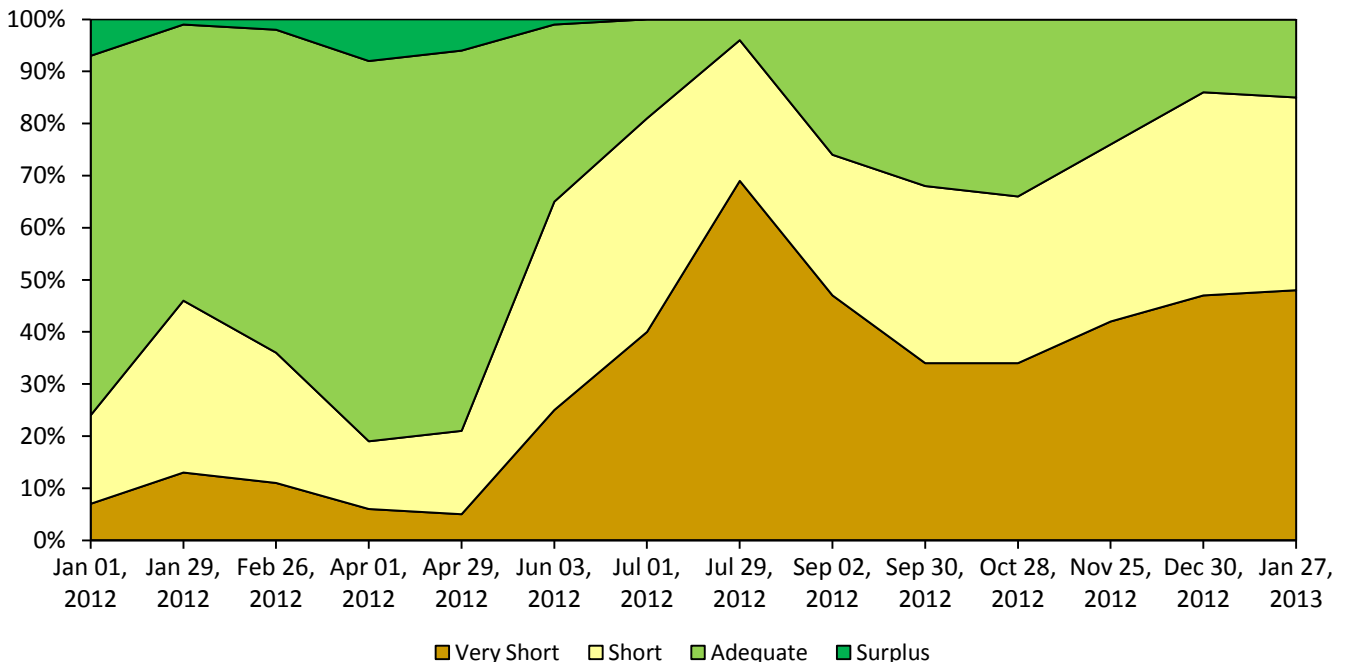
### Feed and Water Supplies as of January 27, 2013

Type	Very Short	Short	Adequate	Surplus
	Percent			
Feed Grain	22	26	51	1
Hay and Forage	37	37	25	1
Stock Water	48	30	22	0

### Wheat Wind and Freeze Damage as of January 27, 2013

Type	None	Light	Moderate	Severe
	Percent			
Wind Damage	81	13	5	1
Freeze Damage	84	11	4	1

## Kansas Topsoil Moisture Monthly 2012 - 2013



**Temperature and Precipitation Data for January 2013 <sup>1/</sup>**

Location	Monthly Temperatures				Precipitation (in.)				Days in Jan. with Temps. Below	
	Extremes		Avg.	DFN	January		Since Jan. 1, 2013		32° F	28° F
	High	Low			Total	DFN	Total	DFN		
<b>Northwest District</b>										
Atwood	62	-1	28	+3	0.27	-0.25	0.27	-0.25	27	26
Colby	60	0	28	+3	0.15	-0.21	0.15	-0.21	27	26
Goodland	60	2	30	+3	0.12	-0.27	0.12	-0.27	27	25
Hill City	61	4	30	+4	0.16	-0.32	0.16	-0.32	25	22
Oberlin	59	1	26	0	0.28	-0.13	0.28	-0.13	26	26
<b>West Central District</b>										
Healy	63	4	30	+4	0.39	-0.11	0.39	-0.11	26	26
Russell Springs	64	3	30	+3	0.30	-0.08	0.30	-0.08	27	26
Tribune	66	-2	30	+4	0.17	-0.24	0.17	-0.24	27	26
WaKeeney	60	8	30	+2	0.15	-0.45	0.15	-0.45	26	23
<b>Southwest District</b>										
Ashland	65	8	32	+3	0.79	+0.31	0.79	+0.31	26	25
Dodge City	65	7	33	+4	0.45	-0.09	0.45	-0.09	24	20
Elkhart	75	8	34	+3	0.31	-0.19	0.31	-0.19	24	23
Garden City	61	-1	30	+2	0.41	+0.02	0.41	+0.02	26	25
Johnson	64	4	32	+1	0.26	+0.05	0.26	+0.05	27	26
Liberal	63	3	33	+2	0.30	-0.20	0.30	-0.20	24	22
Ulysses	59	-5	29	-2	0.65	+0.27	0.65	+0.27	27	25
<b>North Central District</b>										
Alton	60	-1	26	+2	0.71	+0.19	0.71	+0.19	26	24
Belleville	59	5	26	+1	0.47	-0.15	0.47	-0.15	26	25
Beloit	60	0	27	0	0.66	+0.03	0.66	+0.03	26	25
Clay Center	61	6	28	+3	0.76	+0.12	0.76	+0.12	26	24
Concordia	60	8	30	+5	0.86	+0.28	0.86	+0.28	24	20
Smith Center	58	2	26	-2	0.62	+0.19	0.62	+0.19	26	25
<b>Central District</b>										
Great Bend	63	7	32	+3	0.94	+0.31	0.94	+0.31	25	22
Hays	62	6	29	+3	0.54	+0.06	0.54	+0.06	26	25
Herington	61	5	29	+4	0.49	-0.38	0.49	-0.38	26	23
McPherson	62	7	31	+4	0.92	+0.26	0.92	+0.26	25	24
Salina	64	6	33	+5	0.94	+0.24	0.94	+0.24	23	20
Wilson Lake	63	7	30	+3	0.53	+0.06	0.53	+0.06	25	23
<b>South Central District</b>										
Anthony	63	13	34	+4	0.67	-0.22	0.67	-0.22	26	23
Hutchinson	66	4	34	+6	0.53	-0.07	0.53	-0.07	24	21
Medicine Lodge	65	10	36	+6	0.76	+0.13	0.76	+0.13	23	20
Newton	63	10	34	+6	0.43	-0.27	0.43	-0.27	21	18
Wichita	65	10	36	+6	0.67	-0.09	0.67	-0.09	24	17
Wilmore	64	7	32	+3	0.76	+0.21	0.76	+0.21	26	26
<b>Northeast District</b>										
Baileyville	58	3	26	+2	0.35	-0.42	0.35	-0.42	26	25
Holton	62	3	28	+4	0.45	-0.40	0.45	-0.40	25	23
Horton	62	5	29	+3	0.50	-0.28	0.50	-0.28	26	24
Leavenworth	63	5	28	+2	0.41	-0.54	0.41	-0.54	27	26
Manhattan	63	8	31	+5	0.60	-0.18	0.60	-0.18	24	24
Valley Falls	60	6	28	+2	0.44	-0.50	0.44	-0.50	26	24
<b>East Central District</b>										
Emporia	63	6	33	+7	0.38	-0.45	0.38	-0.45	23	19
Eskridge	60	8	29	+4	0.43	-0.36	0.43	-0.36	25	24
Garnett	61	8	31	+1	0.68	-0.51	0.68	-0.51	25	24
Lawrence	62	10	32	+3	0.88	-0.23	0.88	-0.23	24	20
Ottawa	62	5	30	0	0.77	-0.35	0.77	-0.35	25	25
Tallgrass Prairie	62	6	31	+5	0.55	-0.30	0.55	-0.30	25	23
Topeka	66	6	33	+8	0.56	-0.28	0.56	-0.28	22	20
<b>Southeast District</b>										
Columbus	63	14	34	+4	0.83	-0.52	0.83	-0.52	23	19
El Dorado	64	10	33	+5	0.45	-0.36	0.45	-0.36	25	25
Iola	65	9	32	+4	0.76	-0.44	0.76	-0.44	25	22
Parsons	63	10	33	+4	0.61	-0.56	0.61	-0.56	24	21
Pittsburg	64	15	35	+5	0.69	-0.75	0.69	-0.75	21	18
Winfield	65	11	36	+7	0.33	-0.68	0.33	-0.68	21	18

Source: Agricultural Weather Information Service, Inc. © 2012 based on NWS data. DFN = Departure From Normal (1970-2000).

<sup>1/</sup> 7:00 a.m. Sunday to 7:00 a.m. Sunday.

An audio summary of this report will be available at:

[http://www.nass.usda.gov/Statistics\\_by\\_State/Kansas/Publications/Crop\\_Progress\\_and\\_Condition/index.asp](http://www.nass.usda.gov/Statistics_by_State/Kansas/Publications/Crop_Progress_and_Condition/index.asp)

**This is a cooperative effort with Kansas State Research & Extension Service,  
USDA-Farm Service Agency, and Kansas Agricultural Statistics**

NASS provides accurate, timely, useful and objective statistics in service to U.S. agriculture. The Agency invites you to express your thoughts and provide occasional feedback on our products and services by joining a data user community. To join, sign in at <http://usda.mannlib.cornell.edu/subscriptions> and look for "NASS Data User Community."

Dona Ratliff  
Agricultural Statistician

USDA is an equal opportunity provider and employer.

Robert White  
Acting Deputy Director