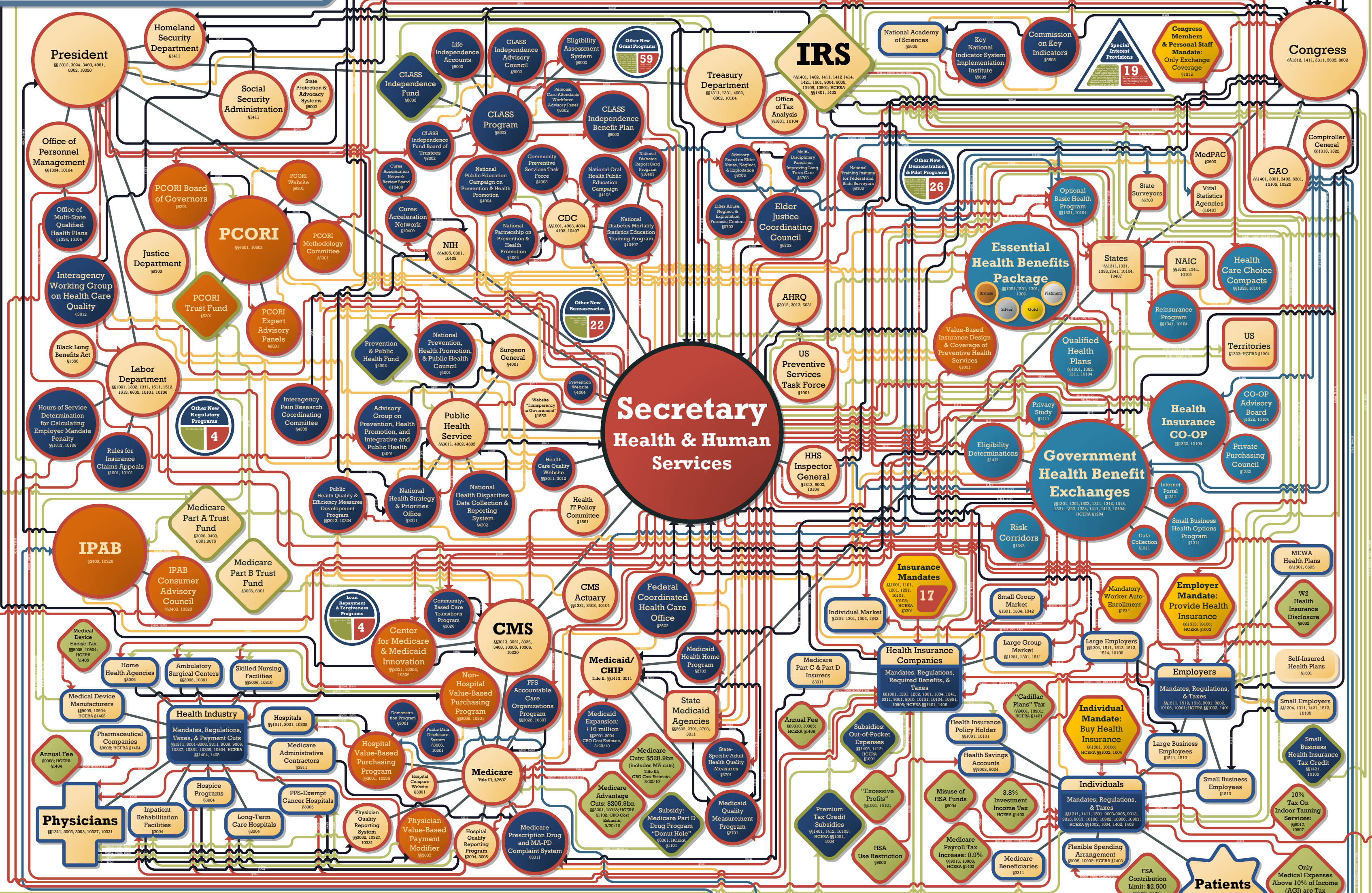


The New Government Health Care System



New Government

- Rationing Potential
- Mandates
- Involvement in Health Insurance Market
- Taxes & Monetary Fees/Penalties/Cuts
- Other Expansions
- Trust Fund (Rationing Potential)
- Represents Bundles of Additional Entities
- Other New Trust Funds/Monetary Benefits

Expanded Government

- Government with Expanded Authority/Responsibility
- Government Financial Entity with New Inflows/Outflows
- State/Territory with Expanded Authority/Responsibility

Private

- Private Entity with New Mandates/Regulations/Responsibilities
- Unchanged Private Entity
- Special Interest Provisions

New Relationships

- Regulations/Requirements/Mandates
- Reporting Requirements
- Oversight
- Money Flows
- Consultation/Advisory/Info Sharing
- Structural Connections (Includes Existing)

Legend:

- AGI: Adjusted Gross Income
- AHRQ: Agency for Healthcare Research and Quality
- CDC: Centers for Disease Control and Prevention
- CHIP: Children's Health Insurance Program
- CLASS: Community Living Assistance Services & Supports
- CMS: Centers for Medicare & Medicaid Services
- CO-OP: Consumer Operated & Oriented Program
- FFS: Fee-for-Service
- FSA: Flexible Spending Arrangement
- GAO: Government Accountability Office
- HCERA: Health Care & Education Reconciliation Act
- HHS: Health & Human Services Department
- HSA: Health Savings Account
- IPAB: Independent Payment Advisory Board
- IRS: Internal Revenue Service
- MA-PD: Medicare Advantage Prescription Drug
- MedPAC: Medicare Payment Advisory Commission
- MERD: Medical Early Risk Detection
- EALORS: Executive Auxiliary Linked Office Regional Systems
- MEWA: Multiple Employer Welfare Arrangement
- NAIC: National Association of Insurance Commissioners
- NIH: National Institutes of Health
- PCORI: Patient-Centered Outcomes Research Institute
- PPS: Prospective Payment System

Patient Protection & Affordable Care Act, P.L. 111-148; Health Care & Education Reconciliation Act, P.L. 111-152
 Prepared by: Joint Economic Committee, Republican Staff
 Congressman Kevin Brady, Senior House Republican
 Senator Sam Brownback, Ranking Member