



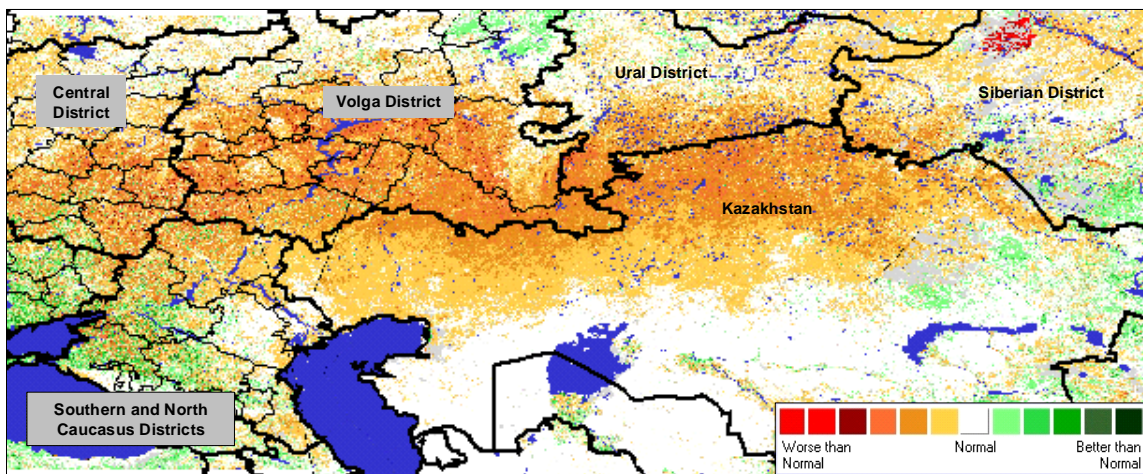
United States  
Department of  
Agriculture

Foreign  
Agricultural  
Service

Circular Series  
WAP 08-10  
August 2010

# World Agricultural Production

MODIS NDVI: Departure from Mean, July 11-27, 2010



Satellite-derived vegetative indices indicate that crop conditions are significantly worse than normal in nearly every major crop-production region of Russia and Kazakhstan. Persistent drought and excessive heat have reduced yield prospects for all crops.

## Russia Wheat: Drought Has Reduced Yield by 40 Percent in Key Production Regions

The USDA forecasts Russia wheat production for 2010/11 at 45.0 million tons, down 8.0 million or 15 percent from last month and down 16.7 million or 27 percent from last year. Area is estimated at 26.7 million hectares, down 0.1 million from last month due to a slight reduction in estimated winter wheat area. Winter wheat accounts for slightly less than half of the total wheat area but almost two-thirds of production due to higher yields. Yield is estimated at 1.69 tons per hectare, down 15 percent from last month, and down 19 percent from the five-year average.

Severe and persistent drought has sharply reduced yield prospects in Russia's Central, Volga, and Ural Districts. The Central District produces mostly winter wheat, and the Volga and Ural Districts produce mostly spring wheat. Ministry of Agriculture harvest data from August 4 indicates that wheat yield is down 39 percent from last year in the Volga District, with harvest about 40 percent complete, and down 37 percent in the Central District, with harvest about 80 percent complete. The drought has extended into the western regions of Siberia, but conditions in Altai Krai, Siberia's top wheat-producing territory, are reasonably good. Wheat harvest has not yet begun in the Ural or Siberian Districts.

Wheat in the Southern and North Caucasus Districts largely escaped significant drought-related damage. These two districts are located in southern European Russia and typically produce

Approved by the World Agricultural Outlook Board

about half of Russia's winter wheat. Harvest reports show yields up 6 percent in the Southern District and up 8 percent in the North Caucasus District with harvest about 80 to 90 percent complete. *(For more information, contact Mark Lindeman at 202-690-0143.)*

### **Russia Sunflowerseed: Persistent Drought in Northern Sunflower Zone**

The USDA forecasts Russia sunflowerseed production for 2010/11 at 6.5 million tons, down 1.0 million or 13 percent from last month but up 1 percent from last year. Area is estimated at 6.1 million hectares, unchanged from last month. Yield is forecast at 1.07 tons per hectare, down 13 percent from last month, and down 9 percent from the five-year average. The northern portion of Russia's main sunflower zone has been affected by the severe drought that has damaged the country's wheat crop. Nearly one-third of the country's sunflower area is located in the Volga District, where the heat and dryness have been most intense. The Southern and North Caucasus Districts together account for about 40 percent of sunflower area. Although the crop in this region largely dodged earlier drought damage, recent excessive temperatures will likely reduce yield prospects in these districts as well. *(For more information, contact Mark Lindeman at 202-690-0143.)*

### **Ukraine Wheat: Lower Harvest for 2010 Due to Unfavorable Weather and Tight Funds**

The USDA forecasts Ukraine wheat production for 2010/11 at 17.0 million tons, down 3.0 million or 15 percent from last month and down 3.9 million or 19 percent from last year. Estimated area is unchanged at 6.45 million hectares against 6.75 million last year. Yield is estimated at 2.64 tons per hectare, down 15 percent from both last month and last year, and down 10 percent from the five-year average. Official harvest-progress data as of August 6 has wheat output at 17.1 million tons (bunker weight, prior to cleaning and drying), with harvest about 95 percent complete. Output by the same date last year stood at 18.7 million tons, with harvest only 88 percent complete. Agricultural officials attribute the year-to-year drop in yield chiefly to unfavorable weather, including heavy rain in southern Ukraine during the harvest campaign, but independent specialists also cite a reduction in the use of mineral fertilizers and plant-protection chemicals due to a lack of funds following last year's financial crisis. *(For more information, contact Mark Lindeman at 202-690-0143.)*

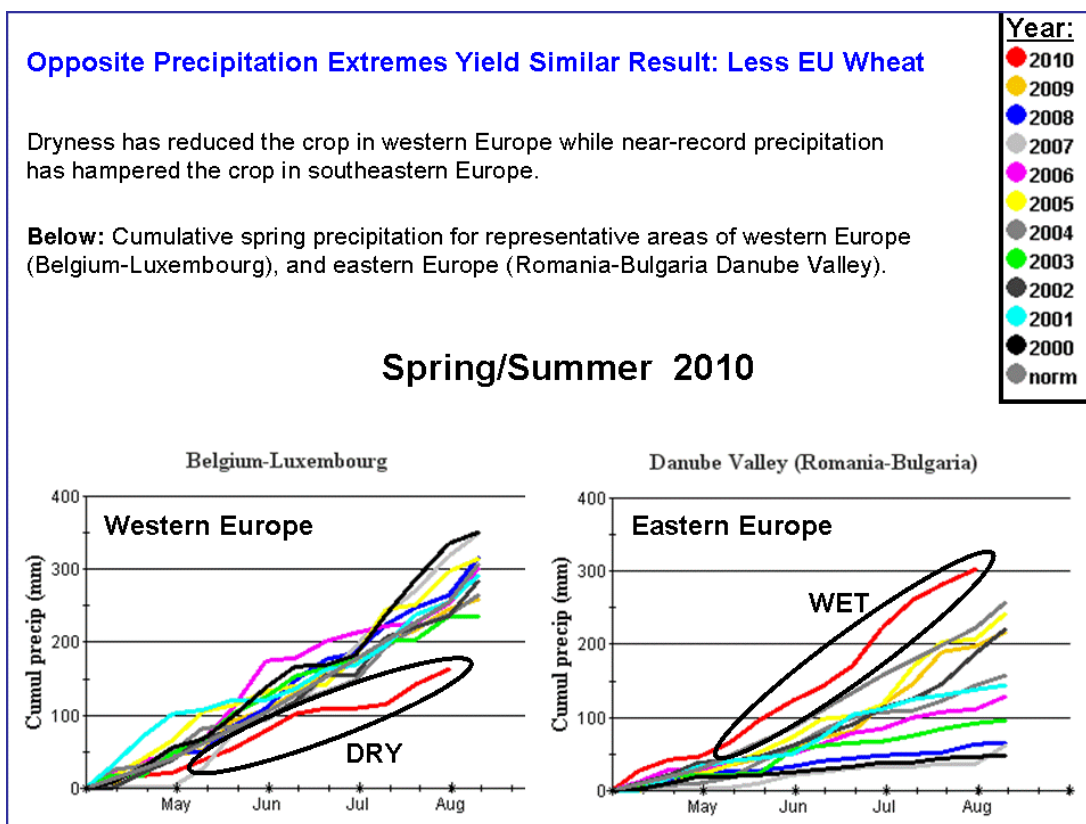
### **Ukraine Corn: Excessive August Temperatures Reduce Yield Prospects**

The USDA forecasts Ukraine corn production for 2010/11 at 11.5 million tons, down 1.5 million or 12 percent from last month but up 1.0 million or 10 percent from last year. Despite the month-to-month decrease, estimated production remains at a record level due to the record area of 2.6 million hectares, which is unchanged from last month but up 0.5 million hectares from last year. Forecast yield is reduced from 5.00 to 4.42 tons per hectare, down 12 percent from both last month and last year but still slightly above the 5-year average of 4.34 tons per hectare. Unusually high temperatures beginning in early August will likely have an unfavorable impact on corn yield this year. Although hot weather prevailed earlier in the season as well, temperatures were not significantly or persistently higher than last year, and subsurface moisture reserves were adequate following abundant spring precipitation. Since August 1, however, daily maximum temperatures have frequently exceeded 38 degrees Celsius (100 degrees Fahrenheit)

throughout Ukraine's main corn-production region. (For more information, contact Mark Lindeman at 202-690-0143.)

### EU Wheat Production Lower by 4.3 Million Tons Due to Rain, Dryness

USDA estimates the 2010/11 European Union (EU) wheat crop at 137.5 million tons from 25.6 million hectares. The August production estimate is reduced 4.3 million tons or 3 percent from July. With area unchanged, yield dropped from 5.53 to 5.36 tons per hectare. Compared to last year, production is down 0.7 million tons or 0.5 percent while area is down 0.1 million hectares or 0.4 percent. The wheat crop suffered from a dry spring and early summer in the western EU countries and from excessive precipitation in the eastern countries. France, the EU's largest wheat producer is now estimated to have harvested 37.5 million tons, 0.5 million less than last month and 0.8 million less than last year, even though area is up 5.5 percent from last year. Dryness has reduced France's 2010/11 yield estimate to 6.91 tons per hectare versus 7.45 tons last year. Germany's crop is still being harvested, and is estimated at 24.0 million tons, down 1.5 million or 6 percent from last month and 5 percent from last year. Unfavorable dryness was followed by excessive precipitation. The impact of the dryness was exacerbated in areas with light soils and contributed to the estimated German yield reduction to 7.23 tons per hectare, compared to 7.81 tons reached in 2009/10. Near-record amounts of rainfall fell during the wheat harvest in southeastern Europe, lowering yields and quality. Hungary's wheat crop estimate is reduced by 0.8 million tons from last month to 4.0 million tons, which is down 9 percent from last year. Romania's crop is reduced 0.65 million tons to 6.2 million tons, 17 percent below last year, and Bulgaria's crop is reduced 0.4 million from last month to 3.6 million tons, down 10 percent from last year. (For more information, contact Bryan Purcell at 202-690-0138.)



## **High Prospects for India Cotton**

India's 2010/11 cotton production is forecast at 26.0 million 480-pound bales, up 4 percent from last month, up 2.5 million or 11 percent from last year. The area is forecast at 10.7 million hectares, a 4 percent upward change from last month and up 4 percent from last year. The yield is forecast at 529 kilograms per hectare, slightly up from last month and up 6 percent from last year, and up 3 percent from the five-year average.

The 2010 monsoon rainfall has progressed well over the cotton regions. During the month of July, cumulative rainfall has been very favorable compared to last year, promoting good crop growth and development. Cotton planting in the major producing areas is nearly complete. According to the latest provisional planting estimate from the Ministry of Agriculture in India, total cotton planting progress through the first week in August is at 10.33 million hectares compared to 9.50 million hectares during the corresponding period last year. Currently, planting is reported higher this year in the states of Maharashtra, Andhra Pradesh and Gujarat. Given that most of the cotton growing areas have received good rains and the planting is progressing in a timely fashion, the 2010/11 yields are expected to be better than last year. Even with good yield expectations for now, continued seasonal showers to supplement the early, timely planting moisture will be required for the crop to exceed previous production years. *(For more information, contact Dath Mita at 202-720-7339.)*

## **Excess Monsoon Rainfall Lowers Prospects for Pakistan Cotton**

The USDA's current forecast for the 2010/11 Pakistan cotton production is 9.5 million bales, down 7 percent from last month, and down 0.1 million or 1 percent from last year. Area is forecast at 3.1 million hectares, 5 percent down from last month, but up 2 percent from last year. Yield is forecast at 678 kilograms per hectare, down 2 percent from last month.

Abundant to excessive southwest monsoon rainfall has occurred across Pakistan including within some of the major cotton growing areas. The excessive monsoon rainfall triggered severe inland flash floods and river flooding. According to recent reports, Khyber Pakhtunkhwa (formally known as Northwest Frontier Province), Baluchistan, and Punjab have been the provinces most affected. Thousands of people have lost their lives, homes and livelihoods. Crops have been destroyed, and roads and bridges damaged.

The major *kharif* season (June-November) crops are cotton and rice in Pakistan. In addition, production of corn, millet, and sorghum is also substantial during this time. At this point, however, it is too early to have a realistic assessment of the exact impact on crop production through the affected regions. The extent of the floodwaters and the damage to all crops including cotton won't be accurately determined until flood waters recede. The preliminary assessment is that significant damage has occurred, particularly to the major cotton areas in Punjab and Sindh. *(For more information, contact Dath Mita at 202-720-7339.)*

This report uses information from the Foreign Agricultural Service's (FAS) global network of agricultural attachés and counselors, official statistics of foreign governments and other foreign source materials, and the analysis of economic data and satellite imagery. Estimates of foreign area, yield, and production are from the International Production Assessment Division, FAS, and are reviewed by USDA's Inter-Agency Commodity Estimates Committee. Estimates of U.S. area, yield, and production are from USDA's National Agricultural Statistics Service. Numbers within the report may not add to totals because of rounding. This report reflects official USDA estimates released in the World Agricultural Supply and Demand Estimates (WASDE-467) August 12, 2010.

**Printed copies are available from the National Technical Information Service. Download an order form at [http://www.ntis.gov/products/specialty/usda/fas\\_a-g.asp](http://www.ntis.gov/products/specialty/usda/fas_a-g.asp), or call NTIS at 1-800-363-2068.**

The FAS/OGA International Production Assessment Branch prepared this report. The next issue of World Agricultural Production will be released after 9:30 a.m. Eastern Time, September 10, 2010.

<b>Conversion Table</b>		
Metric tons to bushels		
Wheat, soybeans	=	MT * 36.7437
Corn, sorghum, rye	=	MT * 39.36825
Barley	=	MT * 45.929625
Oats	=	MT * 68.894438
Metric tons to 480-lb bales		
Cotton	=	MT * 4.592917
Metric tons to hundredweight		
Rice	=	MT * 22.04622
Area & weight		
1 hectare	=	2.471044 acres
1 kilogram	=	2.204622 pounds



For further information, contact:  
**U.S. Department of Agriculture**  
Foreign Agricultural Service  
**Office of Global Analysis**  
International Production Assessment Division  
Ag Box 1051, Room 4630, South Building  
Washington, DC 20250-1051

Telephone: (202) 720-1157

Fax: (202) 720-1158

---

**GENERAL INFORMATION**

Director	Derrick Williams III	202-690-0131	derrick.williams@fas.usda.gov
Deputy Director	Tom St. Clair	202-720-2974	tom.stclair@fas.usda.gov
Deputy Director/SIA Manager	Curt Reynolds, PhD	202-690-0134	curt.reynoldsc@fas.usda.gov
USDA Remote Sensing Advisor	Glenn Bethel	202-720-1280	glenn.bethel@fas.usda.gov
Sr. Agricultural Economist	Paul Provance	202-720-0873	paul.provance@fas.usda.gov
Program Analyst	Mary Jackson	202-720-0886	mary.jackson@fas.usda.gov

**COUNTRY- AND REGION-SPECIFIC INFORMATION**

South America	Denise McWilliams, PhD	202-720-0107	denise.mcwilliams@fas.usda.gov
Europe and North Africa	Bryan Purcell	202-690-0138	bryan.purcell@fas.usda.gov
FSU-12, Russia	Mark Lindeman	202-690-0143	mark.lindeman@fas.usda.gov
Canada, Mexico, Central America,	Arnella Trent	202-720-0881	arnella.trent@fas.usda.gov
China, East Asia	Paulette Sandene	202-690-0133	paulette.sandene@fas.usda.gov
South Asia, India	Dath Mita, PhD	202-720-7339	mita.dath@fas.usda.gov
Australia & New Zealand			
Africa	Curt Reynolds, PhD	202-690-0134	curt.reynoldsc@fas.usda.gov
Middle East and South East Asia	Michael Shean	202-720-7366	michael.shean@fas.usda.gov
Eastern United States	Robert Tetrault	202-720-1071	robert.tetrault@fas.usda.gov
Western United States	Jim Crutchfield	202-690-0135	james.crutchfield@fas.usda.gov
Brazil, Venezuela, Caribbean	William Baker, PhD	202-720-6740	william.baker@fas.usda.gov

**Table 01 World Crop Production Summary**

Million Metric Tons

Commodity	World	Total Foreign	North America			EU-27	Former Soviet		Asia (WAP)					South America		Selected Other			All Others	
			United States	Canada	Mexico		Russia	Ukraine	China	India	Indonesia	Pakistan	Thailand	Argentina	Brazil	Australia	South Africa	Turkey		
---Million metric tons---																				
<b>Wheat</b>																				
2008/09	683.3	615.2	68.0	28.6	4.0	151.1	63.7	25.9	112.5	78.6	nr	21.0	nr	10.1	5.9	21.4	2.1	16.8	73.6	
2009/10 prel.	680.3	620.0	60.3	26.5	4.3	138.2	61.7	20.9	115.0	80.7	nr	24.0	nr	9.6	4.9	22.5	1.9	18.5	91.3	
2010/11 proj.																				
Jul	661.1	600.8	60.3	20.5	4.4	141.8	53.0	20.0	114.5	79.0	nr	22.6	nr	12.0	5.5	22.0	1.6	17.0	86.9	
Aug	645.7	584.1	61.6	20.5	4.4	137.5	45.0	17.0	114.5	80.7	nr	22.6	nr	12.0	5.0	23.0	1.6	17.0	83.3	
<b>Coarse Grains</b>																				
2008/09	1,109.6	783.8	325.9	27.2	32.3	161.4	40.7	26.2	172.7	39.6	8.7	3.6	4.6	19.1	53.6	12.3	13.1	10.4	158.3	
2009/10 prel.	1,103.6	754.4	349.2	22.4	27.8	151.8	31.8	24.1	161.4	34.2	7.0	3.6	4.2	28.0	56.9	11.6	14.5	11.1	164.2	
2010/11 proj.																				
Jul	1,117.6	766.8	350.7	22.1	31.9	146.4	26.8	25.0	173.0	40.6	8.4	3.6	4.0	27.1	53.7	11.0	13.0	10.5	169.8	
Aug	1,107.9	753.2	354.7	22.1	32.0	143.2	20.9	21.8	173.0	40.3	8.4	3.6	4.0	27.1	53.7	11.0	13.0	10.5	168.7	
<b>Rice, Milled</b>																				
2008/09	448.0	441.6	6.4	nr	0.2	1.6	0.5	0.1	134.3	99.2	38.3	6.7	19.9	0.9	8.6	0.0	nr	0.4	131.0	
2009/10 prel.	442.6	435.7	6.9	nr	0.2	2.0	0.6	0.1	137.0	89.1	38.8	6.5	20.3	0.9	7.6	0.1	nr	0.4	132.0	
2010/11 proj.																				
Jul	459.3	451.5	7.8	nr	0.2	2.0	0.6	0.1	137.5	99.0	40.0	6.5	20.6	1.0	8.4	0.2	nr	0.4	134.9	
Aug	459.2	451.5	7.7	nr	0.2	2.0	0.6	0.1	137.5	99.0	40.0	6.5	20.6	1.0	8.4	0.2	nr	0.5	134.9	
<b>Total Grains</b>																				
2008/09	2,240.9	1,840.6	400.3	55.8	36.4	314.2	104.9	52.2	419.5	217.4	47.0	31.3	24.4	30.1	68.1	33.7	15.2	27.6	362.9	
2009/10 prel.	2,226.5	1,810.0	416.4	48.9	32.3	291.9	94.1	45.1	413.4	204.0	45.8	34.2	24.5	38.5	69.4	34.2	16.4	29.9	387.5	
2010/11 proj.																				
Jul	2,237.9	1,819.0	418.9	42.6	36.4	290.2	80.4	45.1	425.0	218.6	48.4	32.7	24.6	40.1	67.6	33.2	14.6	27.9	391.6	
Aug	2,212.8	1,788.8	424.0	42.6	36.5	282.7	66.5	38.9	425.0	220.0	48.4	32.7	24.6	40.1	67.1	34.2	14.6	27.9	386.9	
<b>Oilseeds</b>																				
2008/09	396.4	307.2	89.2	16.1	0.7	27.2	8.8	10.7	58.1	33.4	9.1	4.8	0.7	35.5	60.3	2.4	1.5	1.6	36.2	
2009/10 prel.	441.2	342.3	98.9	15.4	0.6	29.8	8.0	9.5	57.5	31.7	9.4	5.2	0.6	57.9	71.5	2.6	1.2	1.5	39.9	
2010/11 proj.																				
Jul	440.7	340.0	100.8	14.2	0.6	29.1	9.4	10.5	56.8	34.4	10.2	5.6	0.6	54.5	68.0	2.9	1.4	1.7	39.9	
Aug	439.7	336.4	103.3	14.2	0.6	28.4	8.4	9.1	56.8	34.6	10.2	5.1	0.6	54.5	68.0	3.2	1.4	1.7	39.6	
<b>Cotton</b>																				
2008/09	107.2	94.3	12.8	nr	0.6	1.2	nr	nr	36.7	22.6	0.0	8.7	0.0	0.6	5.5	1.5	0.0	1.9	15.0	
2009/10 prel.	102.1	90.0	12.2	nr	0.4	1.0	nr	nr	32.5	23.5	0.0	9.6	0.0	0.8	5.4	1.6	0.0	1.8	13.3	
2010/11 proj.																				
Jul	116.0	97.7	18.3	nr	0.6	1.4	nr	nr	33.0	25.0	0.0	10.2	0.0	0.9	7.0	2.2	0.0	2.1	15.2	
Aug	116.9	98.3	18.5	nr	0.6	1.4	nr	nr	33.0	26.0	0.0	9.5	0.0	0.9	7.0	2.3	0.0	2.3	15.2	

1/ Includes wheat, coarse grains, and rice (milled) shown above.

**Table 02 Wheat Area, Yield, and Production**

Country / Region	Area (Million hectares)				Yield (Metric tons per hectare)				Production (Million metric tons)				Change in Production			
	2008/09	Prel.	2010/11 Proj.		2008/09	Prel.	2010/11 Proj.		2008/09	Prel.	2010/11 Proj.		From last month		From last year	
		2009/10	Jul	Aug		2009/10	Jul	Aug		2009/10	Jul	Aug	MMT	Percent	MMT	Percent
<b>World</b>	225.54	225.62	222.16	221.78	3.03	3.02	2.98	2.91	683.26	680.30	661.07	645.74	-15.33	-2.32	-34.56	-5.08
<b>United States</b>	22.54	20.18	19.53	19.53	3.02	2.99	3.09	3.16	68.02	60.31	60.30	61.64	1.34	2.22	1.33	2.20
<b>Total Foreign</b>	203.00	205.44	202.63	202.25	3.03	3.02	2.96	2.89	615.24	619.98	600.76	584.09	-16.67	-2.77	-35.89	-5.79
<b>China</b>	23.62	24.20	24.30	24.30	4.76	4.75	4.71	4.71	112.46	115.00	114.50	114.50	0.00	0.00	-0.50	-0.43
<b>South Asia</b>																
India	28.15	27.90	28.70	28.70	2.79	2.89	2.75	2.81	78.57	80.68	79.00	80.71	1.71	2.16	0.03	0.04
Pakistan	8.55	9.05	9.00	9.00	2.45	2.66	2.51	2.51	20.96	24.03	22.60	22.60	0.00	0.00	-1.43	-5.96
Afghanistan	1.60	2.50	2.30	2.30	0.94	1.70	1.61	1.61	1.50	4.25	3.70	3.70	0.00	0.00	-0.55	-12.94
<b>Former Soviet Union - 12</b>																
Russia	26.65	28.70	26.80	26.70	2.39	2.15	1.98	1.69	63.70	61.70	53.00	45.00	-8.00	-15.09	-16.70	-27.07
Ukraine	7.05	6.75	6.45	6.45	3.67	3.10	3.10	2.64	25.90	20.90	20.00	17.00	-3.00	-15.00	-3.90	-18.66
Kazakhstan	13.50	14.70	14.60	14.50	0.93	1.16	0.96	0.79	12.55	17.00	14.00	11.50	-2.50	-17.86	-5.50	-32.35
Uzbekistan	1.36	1.40	1.40	1.40	4.41	4.43	4.43	4.64	6.00	6.20	6.20	6.50	0.30	4.84	0.30	4.84
<b>EU-27</b>	26.98	25.72	25.63	25.63	5.60	5.37	5.53	5.36	151.11	138.20	141.82	137.51	-4.32	-3.04	-0.69	-0.50
France	5.49	5.15	5.43	5.43	7.10	7.45	7.00	6.91	39.01	38.32	38.00	37.50	-0.50	-1.32	-0.82	-2.15
Germany	3.21	3.23	3.32	3.32	8.09	7.81	7.68	7.23	25.99	25.18	25.50	24.00	-1.50	-5.88	-1.18	-4.69
United Kingdom	2.08	1.81	1.94	1.94	8.28	7.93	8.09	8.09	17.23	14.38	15.70	15.70	0.00	0.00	1.32	9.19
Poland	2.28	2.35	2.20	2.20	4.07	4.15	4.00	4.00	9.28	9.75	8.80	8.80	0.00	0.00	-0.95	-9.74
Spain	2.07	1.77	1.80	1.80	3.30	2.69	3.00	3.00	6.83	4.75	5.40	5.40	0.00	0.00	0.65	13.68
Italy	2.45	1.83	1.70	1.70	3.83	3.35	3.94	3.94	9.40	6.14	6.70	6.70	0.00	0.00	0.56	9.07
Denmark	0.64	0.74	0.74	0.74	7.85	8.11	7.77	7.50	5.02	6.00	5.75	5.55	-0.20	-3.48	-0.45	-7.44
Hungary	1.13	1.14	1.03	1.03	5.00	3.85	4.66	3.88	5.62	4.40	4.80	4.00	-0.80	-16.67	-0.40	-9.01
Romania	2.17	2.15	2.05	2.05	3.48	2.47	3.34	3.02	7.56	5.30	6.85	6.20	-0.65	-9.49	0.90	16.98
Bulgaria	1.11	1.25	1.04	1.04	4.17	3.19	3.85	3.46	4.63	4.00	4.00	3.60	-0.40	-10.00	-0.40	-10.00
<b>Canada</b>	10.03	9.50	7.70	7.70	2.85	2.79	2.66	2.66	28.61	26.50	20.50	20.50	0.00	0.00	-6.00	-22.64
<b>Australia</b>	13.53	13.79	13.00	13.25	1.58	1.63	1.69	1.74	21.42	22.50	22.00	23.00	1.00	4.55	0.50	2.22
<b>Middle East</b>																
Turkey	7.70	7.80	8.00	8.00	2.18	2.37	2.13	2.13	16.80	18.45	17.00	17.00	0.00	0.00	-1.45	-7.86
Iran	5.85	6.00	6.40	6.40	1.71	2.00	2.25	2.25	10.00	12.00	14.40	14.40	0.00	0.00	2.40	20.00
Syria	1.49	1.50	1.35	1.35	1.44	2.67	2.78	2.78	2.14	4.00	3.75	3.75	0.00	0.00	-0.25	-6.25
<b>North Africa</b>																
Egypt	1.23	1.32	1.32	1.32	6.51	6.45	6.52	6.52	7.98	8.52	8.60	8.60	0.00	0.00	0.08	0.90
Morocco	2.86	2.98	2.80	2.80	1.31	2.14	1.61	1.61	3.73	6.37	4.50	4.50	0.00	0.00	-1.87	-29.36
<b>Argentina</b>	5.12	3.20	4.30	4.30	1.97	3.00	2.79	2.79	10.10	9.60	12.00	12.00	0.00	0.00	2.40	25.00
<b>Others</b>	17.74	18.44	18.58	18.15	2.35	2.39	2.33	2.28	41.71	44.08	43.19	41.33	-1.87	-4.32	-2.75	-6.25

World and Selected Countries and Regions



**Table 03 Total Coarse Grain Area, Yield, and Production**

Country / Region	Area (Million hectares)				Yield (Metric tons per hectare)				Production (Million metric tons)				Change in Production			
	2008/09	Prel.	2010/11 Proj.		2008/09	Prel.	2010/11 Proj.		2008/09	Prel.	2010/11 Proj.		From last month		From last year	
		2009/10	Jul	Aug		2009/10	Jul	Aug		2009/10	Jul	Aug	MMT	Percent	MMT	Percent
<b>World</b>	313.60	305.76	308.05	307.48	3.54	3.61	3.63	3.60	1,109.62	1,103.57	1,117.56	1,107.91	-9.64	-0.86	4.34	0.39
<b>United States</b>	36.94	36.36	36.54	36.54	8.82	9.60	9.60	9.71	325.87	349.22	350.74	354.68	3.94	1.12	5.46	1.56
<b>Total Foreign</b>	276.66	269.40	271.51	270.94	2.83	2.80	2.82	2.78	783.76	754.35	766.82	753.24	-13.58	-1.77	-1.12	-0.15
<b>China</b>	32.55	32.97	33.43	33.43	5.30	4.89	5.17	5.17	172.66	161.35	173.00	173.00	0.00	0.00	11.65	7.22
<b>South America</b>																
Brazil	15.38	14.14	14.03	14.03	3.49	4.02	3.83	3.83	53.62	56.86	53.73	53.73	0.00	0.00	-3.13	-5.50
Argentina	3.86	4.10	4.20	4.30	4.96	6.82	6.46	6.30	19.13	27.95	27.08	27.08	0.00	0.00	-0.87	-3.12
<b>EU-27</b>	33.33	32.19	30.55	30.55	4.84	4.71	4.79	4.69	161.43	151.76	146.35	143.16	-3.20	-2.18	-8.60	-5.67
France	4.10	4.18	3.87	3.87	7.56	7.54	7.38	7.11	30.97	31.54	28.55	27.51	-1.04	-3.63	-4.03	-12.77
Germany	3.83	3.52	3.38	3.38	6.30	6.63	6.63	6.31	24.12	23.30	22.42	21.32	-1.11	-4.93	-1.98	-8.51
Poland	6.25	6.16	5.98	5.98	2.93	3.21	2.95	2.95	18.31	19.74	17.62	17.62	0.00	0.00	-2.13	-10.77
Spain	4.53	4.14	4.03	4.03	3.66	2.93	3.44	3.37	16.62	12.14	13.86	13.58	-0.29	-2.06	1.44	11.83
Italy	1.52	1.40	1.33	1.33	7.63	6.79	7.67	7.67	11.55	9.52	10.20	10.20	0.00	0.00	0.68	7.12
Hungary	1.77	1.72	1.67	1.67	6.30	5.29	5.96	5.86	11.15	9.09	9.92	9.75	-0.17	-1.71	0.66	7.27
United Kingdom	1.19	1.32	1.06	1.06	5.92	5.81	5.75	5.75	7.06	7.64	6.07	6.07	0.00	0.00	-1.57	-20.58
Romania	3.10	3.10	2.99	2.99	3.10	2.91	3.15	3.12	9.62	9.04	9.42	9.32	-0.10	-1.06	0.28	3.06
<b>Former Soviet Union - 12</b>																
Russia	17.65	15.90	14.55	14.25	2.31	2.00	1.84	1.47	40.70	31.82	26.80	20.90	-5.90	-22.01	-10.92	-34.31
Ukraine	7.59	8.08	8.12	7.92	3.45	2.99	3.07	2.75	26.22	24.12	24.95	21.75	-3.20	-12.83	-2.37	-9.83
Kazakhstan	2.48	2.38	2.18	1.98	0.93	1.31	1.06	0.92	2.32	3.12	2.32	1.82	-0.50	-21.60	-1.30	-41.73
<b>Africa</b>	78.64	80.40	79.99	79.99	1.33	1.34	1.36	1.36	104.41	108.00	109.09	108.49	-0.60	-0.55	0.49	0.45
Nigeria	17.95	18.25	18.35	18.35	1.49	1.53	1.53	1.53	26.67	27.96	28.10	28.10	0.00	0.00	0.14	0.50
South Africa	3.77	4.13	3.90	3.90	3.47	3.51	3.34	3.34	13.08	14.53	13.03	13.03	0.00	0.00	-1.50	-10.31
Ethiopia	4.88	4.93	4.93	4.93	1.85	1.63	1.81	1.81	9.03	8.05	8.93	8.93	0.00	0.00	0.88	10.92
Egypt	0.99	1.04	1.08	1.08	7.77	7.57	7.46	7.46	7.71	7.88	8.06	8.06	0.00	0.00	0.18	2.26
<b>India</b>	26.65	24.28	26.49	26.49	1.49	1.41	1.53	1.52	39.61	34.16	40.60	40.30	-0.30	-0.74	6.14	17.97
<b>Southeast Asia</b>																
Indonesia	3.22	2.70	3.15	3.15	2.70	2.59	2.67	2.67	8.70	7.00	8.40	8.40	0.00	0.00	1.40	20.00
Philippines	2.66	2.51	2.65	2.65	2.58	2.48	2.57	2.57	6.85	6.24	6.80	6.80	0.00	0.00	0.57	9.06
Thailand	1.11	1.04	1.01	1.01	4.13	4.02	3.94	3.94	4.56	4.16	3.96	3.96	0.00	0.00	-0.20	-4.81
<b>Mexico</b>	9.63	8.20	9.46	9.46	3.35	3.39	3.38	3.39	32.25	27.80	31.93	32.03	0.10	0.31	4.23	15.22
<b>Canada</b>	6.33	5.22	5.01	5.01	4.29	4.29	4.42	4.42	27.18	22.37	22.11	22.11	0.00	0.00	-0.27	-1.20
<b>Australia</b>	6.79	6.08	5.86	5.86	1.81	1.90	1.87	1.87	12.27	11.57	10.97	10.97	0.00	0.00	-0.60	-5.19
<b>Turkey</b>	4.25	4.23	4.18	4.17	2.45	2.62	2.51	2.52	10.42	11.10	10.50	10.50	0.00	0.00	-0.60	-5.41
<b>Others</b>	24.56	25.00	26.67	26.70	2.50	2.60	2.56	2.56	61.44	65.00	68.25	68.26	0.02	0.02	3.27	5.02

World and Selected Countries and Regions

**Table 04 Corn Area, Yield, and Production**

Country / Region	Area (Million hectares)				Yield (Metric tons per hectare)				Production (Million metric tons)				Change in Production			
	2008/09	Prel.	2010/11 Proj.		2008/09	Prel.	2010/11 Proj.		2008/09	Prel.	2010/11 Proj.		From last month		From last year	
		2009/10	Jul	Aug		2009/10	Jul	Aug		2009/10	Jul	Aug	MMT	Percent	MMT	Percent
<b>World</b>	158.19	155.49	158.86	158.78	5.04	5.20	5.24	5.24	797.83	808.45	832.38	831.59	-0.79	-0.09	23.14	2.86
<b>United States</b>	31.80	32.21	32.78	32.78	9.66	10.34	10.26	10.36	307.14	333.01	336.44	339.49	3.05	0.91	6.48	1.95
<b>Total Foreign</b>	126.39	123.28	126.08	126.00	3.88	3.86	3.93	3.91	490.69	475.44	495.94	492.10	-3.84	-0.77	16.66	3.50
<b>China</b>	29.86	30.40	30.80	30.80	5.56	5.10	5.39	5.39	165.90	155.00	166.00	166.00	0.00	0.00	11.00	7.10
<b>South America</b>																
Brazil	14.10	12.93	12.75	12.75	3.62	4.21	4.00	4.00	51.00	54.35	51.00	51.00	0.00	0.00	-3.35	-6.16
Argentina	2.50	2.70	2.60	2.70	6.00	8.33	8.08	7.78	15.00	22.50	21.00	21.00	0.00	0.00	-1.50	-6.67
<b>Mexico</b>	7.32	6.23	7.20	7.20	3.31	3.42	3.33	3.33	24.23	21.30	24.00	24.00	0.00	0.00	2.70	12.68
<b>EU-27</b>	8.79	8.29	8.07	8.07	7.09	6.73	7.07	6.94	62.32	55.77	56.99	55.95	-1.04	-1.82	0.18	0.32
France	1.70	1.65	1.58	1.58	9.31	9.27	9.33	8.89	15.84	15.30	14.70	14.00	-0.70	-4.76	-1.30	-8.50
Italy	0.99	0.92	0.86	0.86	9.80	8.63	10.00	10.00	9.72	7.90	8.60	8.60	0.00	0.00	0.70	8.86
Hungary	1.20	1.18	1.13	1.13	7.39	6.36	7.17	7.17	8.87	7.50	8.10	8.10	0.00	0.00	0.60	8.00
Romania	2.45	2.35	2.25	2.25	3.21	3.19	3.42	3.42	7.87	7.50	7.70	7.70	0.00	0.00	0.20	2.67
Poland	0.32	0.27	0.28	0.28	5.82	6.23	5.89	5.89	1.84	1.71	1.65	1.65	0.00	0.00	-0.06	-3.34
<b>India</b>	8.20	8.00	8.20	8.20	2.41	2.09	2.44	2.44	19.73	16.68	20.00	20.00	0.00	0.00	3.32	19.90
<b>Canada</b>	1.17	1.15	1.20	1.20	9.06	8.31	8.75	8.75	10.59	9.56	10.50	10.50	0.00	0.00	0.94	9.83
<b>Indonesia</b>	3.22	2.70	3.15	3.15	2.70	2.59	2.67	2.67	8.70	7.00	8.40	8.40	0.00	0.00	1.40	20.00
<b>Ukraine</b>	2.40	2.10	2.60	2.60	4.75	5.00	5.00	4.42	11.40	10.50	13.00	11.50	-1.50	-11.54	1.00	9.52
<b>Serbia</b>	1.28	1.20	1.30	1.30	4.80	5.33	5.00	5.00	6.13	6.40	6.50	6.50	0.00	0.00	0.10	1.56
<b>Egypt</b>	0.78	0.83	0.87	0.87	8.51	8.21	8.05	8.05	6.65	6.82	7.00	7.00	0.00	0.00	0.18	2.61
<b>Philippines</b>	2.66	2.51	2.65	2.65	2.58	2.48	2.57	2.57	6.85	6.24	6.80	6.80	0.00	0.00	0.57	9.06
<b>Vietnam</b>	1.09	1.20	1.20	1.20	4.08	4.40	4.58	4.58	4.43	5.28	5.50	5.50	0.00	0.00	0.22	4.17
<b>Thailand</b>	1.07	1.00	0.97	0.97	4.21	4.10	4.02	4.02	4.50	4.10	3.90	3.90	0.00	0.00	-0.20	-4.88
<b>Russia</b>	1.65	1.10	1.35	1.15	4.00	3.59	3.70	3.04	6.60	3.95	5.00	3.50	-1.50	-30.00	-0.45	-11.39
<b>Sub-Saharan Africa</b>																
South Africa	2.90	3.25	3.00	3.00	4.34	4.31	4.17	4.17	12.57	14.00	12.50	12.50	0.00	0.00	-1.50	-10.71
Nigeria	4.70	4.90	4.90	4.90	1.70	1.79	1.78	1.78	7.97	8.76	8.70	8.70	0.00	0.00	-0.06	-0.67
Ethiopia	1.98	2.00	2.00	2.00	2.22	1.95	2.20	2.20	4.40	3.90	4.40	4.40	0.00	0.00	0.50	12.82
Zimbabwe	1.30	1.10	1.30	1.30	0.40	0.59	0.58	0.58	0.53	0.65	0.75	0.75	0.00	0.00	0.10	15.38
<b>Turkey</b>	0.52	0.50	0.50	0.49	7.98	8.00	7.80	8.16	4.15	4.00	3.90	4.00	0.10	2.56	0.00	0.00
<b>Others</b>	28.92	29.19	29.47	29.50	1.97	2.01	2.04	2.04	57.06	58.68	60.09	60.19	0.10	0.17	1.52	2.58

World and Selected Countries and Regions

**Table 05 Barley Area, Yield, and Production**

Country / Region	Area (Million hectares)				Yield (Metric tons per hectare)				Production (Million metric tons)				Change in Production			
	Prel.		2010/11 Proj.		Prel.		2010/11 Proj.		Prel.		2010/11 Proj.		From last month		From last year	
	2008/09	2009/10	Jul	Aug	2008/09	2009/10	Jul	Aug	2008/09	2009/10	Jul	Aug	MMT	Percent	MMT	Percent
<b>World</b>	55.90	55.38	52.27	51.88	2.78	2.70	2.59	2.47	155.28	149.34	135.54	127.95	-7.59	-5.60	-21.38	-14.32
<b>United States</b>	1.53	1.26	1.03	1.03	3.42	3.93	3.85	3.89	5.23	4.95	3.97	4.01	0.04	1.01	-0.94	-19.03
<b>Total Foreign</b>	54.37	54.12	51.24	50.85	2.76	2.67	2.57	2.44	150.05	144.39	131.57	123.95	-7.63	-5.80	-20.44	-14.16
<b>Russia</b>	9.60	9.05	7.50	7.50	2.41	1.98	1.73	1.33	23.10	17.90	13.00	10.00	-3.00	-23.08	-7.90	-44.13
<b>EU-27</b>	14.51	13.85	12.74	12.74	4.51	4.42	4.42	4.30	65.45	61.26	56.37	54.83	-1.54	-2.73	-6.43	-10.49
Germany	1.96	1.80	1.69	1.69	6.10	6.56	6.45	6.27	11.97	11.80	10.88	10.58	-0.30	-2.76	-1.22	-10.34
France	1.80	1.88	1.66	1.66	6.77	6.84	6.39	6.20	12.17	12.88	10.60	10.30	-0.30	-2.83	-2.58	-20.03
Spain	3.49	3.05	2.95	2.95	3.23	2.43	3.05	2.95	11.27	7.40	9.00	8.70	-0.30	-3.33	1.30	17.57
United Kingdom	1.03	1.16	0.90	0.90	5.95	5.84	5.78	5.78	6.14	6.77	5.20	5.20	0.00	0.00	-1.57	-23.18
Denmark	0.72	0.59	0.60	0.60	4.69	5.77	5.38	5.21	3.36	3.42	3.20	3.10	-0.10	-3.13	-0.32	-9.38
Poland	1.21	1.16	1.10	1.10	3.00	3.40	3.18	3.18	3.62	3.94	3.50	3.50	0.00	0.00	-0.44	-11.05
Czech Republic	0.48	0.43	0.40	0.40	4.66	4.23	3.94	3.94	2.24	1.80	1.58	1.58	0.00	0.00	-0.22	-12.35
Finland	0.59	0.60	0.39	0.39	3.63	3.63	3.64	3.64	2.13	2.18	1.40	1.40	0.00	0.00	-0.78	-35.78
Sweden	0.40	0.36	0.32	0.32	4.19	4.65	4.69	4.69	1.67	1.68	1.50	1.50	0.00	0.00	-0.18	-10.55
Italy	0.33	0.31	0.29	0.29	3.74	3.42	3.52	3.52	1.24	1.05	1.02	1.02	0.00	0.00	-0.03	-2.76
Hungary	0.33	0.32	0.32	0.32	4.45	3.22	3.44	3.20	1.48	1.03	1.10	1.03	-0.08	-6.82	-0.01	-0.77
Austria	0.19	0.18	0.17	0.17	5.20	4.59	5.06	5.06	0.97	0.84	0.85	0.85	0.00	0.00	0.02	1.80
<b>Ukraine</b>	4.15	5.00	4.70	4.50	3.04	2.36	2.23	2.00	12.60	11.80	10.50	9.00	-1.50	-14.29	-2.80	-23.73
<b>Canada</b>	3.50	2.92	2.65	2.65	3.36	3.26	3.17	3.17	11.78	9.52	8.40	8.40	0.00	0.00	-1.12	-11.76
<b>Australia</b>	5.02	4.48	4.20	4.20	1.59	1.85	1.81	1.81	8.00	8.30	7.60	7.60	0.00	0.00	-0.70	-8.43
<b>Turkey</b>	3.40	3.40	3.35	3.35	1.68	1.91	1.79	1.76	5.70	6.50	6.00	5.90	-0.10	-1.67	-0.60	-9.23
<b>China</b>	0.79	0.72	0.80	0.80	3.56	3.50	3.88	3.88	2.82	2.50	3.10	3.10	0.00	0.00	0.60	24.00
<b>Iran</b>	1.30	1.40	1.60	1.60	1.54	1.86	1.94	1.94	2.00	2.60	3.10	3.10	0.00	0.00	0.50	19.23
<b>Morocco</b>	2.18	2.18	1.91	1.91	0.58	1.74	1.47	1.47	1.27	3.80	2.80	2.80	0.00	0.00	-1.00	-26.32
<b>Kazakhstan</b>	2.10	2.00	1.80	1.60	0.86	1.30	1.00	0.81	1.80	2.60	1.80	1.30	-0.50	-27.78	-1.30	-50.00
<b>Ethiopia</b>	0.95	0.98	0.98	0.98	1.56	1.61	1.44	1.44	1.48	1.57	1.40	1.40	0.00	0.00	-0.17	-10.77
<b>Belarus</b>	0.61	0.50	0.60	0.60	3.61	3.30	3.33	3.17	2.20	1.65	2.00	1.90	-0.10	-5.00	0.25	15.15
<b>India</b>	0.75	0.78	0.79	0.79	1.60	2.17	2.03	1.65	1.20	1.69	1.60	1.30	-0.30	-18.75	-0.39	-23.08
<b>Argentina</b>	0.63	0.50	0.55	0.55	3.33	2.70	3.40	3.40	2.11	1.36	1.87	1.87	0.00	0.00	0.51	37.91
<b>Mexico</b>	0.32	0.23	0.31	0.31	2.56	2.17	2.52	2.52	0.81	0.50	0.78	0.78	0.00	0.00	0.28	56.20
<b>Iraq</b>	0.50	0.50	1.25	1.25	0.86	0.90	0.92	0.92	0.43	0.45	1.15	1.15	0.00	0.00	0.70	155.56
<b>Algeria</b>	0.70	1.24	1.00	1.00	0.80	1.94	2.00	1.40	0.56	2.40	2.00	1.40	-0.60	-30.00	-1.00	-41.67
<b>Others</b>	3.36	4.40	4.52	4.52	2.00	1.82	1.79	1.80	6.73	8.00	8.10	8.12	0.02	0.19	0.12	1.51

World and Selected Countries and Regions

**Table 06 Oats Area, Yield, and Production**

Country / Region	Area (Million hectares)				Yield (Metric tons per hectare)				Production (Million metric tons)				Change in Production			
	2008/09	Prel.	2010/11 Proj.		2008/09	Prel.	2010/11 Proj.		2008/09	Prel.	2010/11 Proj.		From last month		From last year	
		2009/10	Jul	Aug		2009/10	Jul	Aug		2009/10	Jul	Aug	MMT	Percent	MMT	Percent
<b>World</b>	12.80	11.88	11.91	11.91	2.04	2.01	1.96	1.90	26.14	23.84	23.35	22.61	-0.74	-3.18	-1.23	-5.15
<b>United States</b>	0.57	0.56	0.53	0.53	2.28	2.42	2.39	2.38	1.29	1.35	1.27	1.27	-0.01	-0.55	-0.09	-6.29
<b>Total Foreign</b>	12.24	11.33	11.38	11.38	2.03	1.99	1.94	1.88	24.84	22.49	22.08	21.35	-0.74	-3.33	-1.14	-5.08
<b>Russia</b>	3.70	3.35	3.40	3.40	1.57	1.61	1.47	1.32	5.80	5.40	5.00	4.50	-0.50	-10.00	-0.90	-16.67
<b>Canada</b>	1.45	0.95	1.00	1.00	2.95	2.95	2.80	2.80	4.27	2.80	2.80	2.80	0.00	0.00	0.00	0.00
<b>EU-27</b>	2.99	2.91	2.79	2.79	3.00	2.93	2.98	2.93	8.98	8.52	8.32	8.18	-0.14	-1.62	-0.34	-3.93
Poland	0.55	0.53	0.53	0.53	2.29	2.70	2.41	2.41	1.26	1.42	1.27	1.27	0.00	0.00	-0.16	-10.92
Finland	0.36	0.34	0.30	0.30	3.42	3.54	3.56	3.56	1.21	1.21	1.05	1.05	0.00	0.00	-0.16	-13.44
Spain	0.51	0.55	0.54	0.54	2.35	1.64	1.94	1.94	1.19	0.91	1.04	1.04	0.00	0.00	0.14	15.23
Germany	0.18	0.16	0.15	0.15	4.43	5.02	5.50	5.20	0.79	0.82	0.83	0.79	-0.05	-5.42	-0.03	-4.15
Sweden	0.22	0.19	0.16	0.16	3.68	3.99	4.00	4.00	0.82	0.75	0.64	0.64	0.00	0.00	-0.11	-14.67
United Kingdom	0.14	0.13	0.13	0.13	5.81	5.78	5.77	5.77	0.78	0.76	0.75	0.75	0.00	0.00	-0.01	-0.92
France	0.10	0.12	0.11	0.11	4.72	4.90	4.77	4.36	0.47	0.57	0.52	0.48	-0.05	-8.65	-0.10	-17.10
Italy	0.15	0.13	0.13	0.13	2.41	2.35	2.35	2.35	0.36	0.32	0.32	0.32	0.00	0.00	0.00	0.00
Denmark	0.08	0.07	0.07	0.07	3.83	4.03	4.15	4.15	0.32	0.27	0.27	0.27	0.00	0.00	0.00	0.00
Romania	0.21	0.20	0.20	0.20	2.01	1.45	1.74	1.74	0.43	0.30	0.34	0.34	0.00	0.00	0.05	15.25
Czech Republic	0.05	0.05	0.06	0.06	3.18	3.54	3.27	3.27	0.16	0.18	0.18	0.18	0.00	0.00	0.00	1.69
Hungary	0.06	0.05	0.06	0.06	3.00	2.19	3.09	2.27	0.18	0.11	0.17	0.13	-0.05	-26.47	0.01	9.65
Austria	0.03	0.03	0.03	0.03	4.00	3.89	4.04	4.04	0.11	0.11	0.11	0.11	0.00	0.00	0.00	0.00
Ireland	0.02	0.02	0.02	0.02	7.70	7.50	7.48	7.48	0.18	0.14	0.16	0.16	0.00	0.00	0.02	16.30
Lithuania	0.07	0.06	0.06	0.06	2.07	1.88	2.00	2.00	0.14	0.12	0.12	0.12	0.00	0.00	0.00	0.00
<b>Australia</b>	0.87	0.92	0.92	0.92	1.33	1.37	1.37	1.37	1.16	1.26	1.26	1.26	0.00	0.00	0.00	0.00
<b>Ukraine</b>	0.45	0.42	0.40	0.40	2.11	1.74	1.75	1.50	0.95	0.73	0.70	0.60	-0.10	-14.29	-0.13	-17.81
<b>China</b>	0.50	0.50	0.50	0.50	1.20	1.20	1.20	1.20	0.60	0.60	0.60	0.60	0.00	0.00	0.00	0.00
<b>Belarus</b>	0.18	0.25	0.25	0.25	3.33	3.20	3.20	3.20	0.60	0.80	0.80	0.80	0.00	0.00	0.00	0.00
<b>Brazil</b>	0.35	0.35	0.35	0.35	1.36	1.36	1.36	1.36	0.48	0.48	0.48	0.48	0.00	0.00	0.00	0.00
<b>Argentina</b>	0.21	0.14	0.20	0.20	1.37	1.31	1.75	1.75	0.29	0.18	0.35	0.35	0.00	0.00	0.17	92.31
<b>Chile</b>	0.10	0.07	0.09	0.09	3.41	5.07	4.44	4.44	0.34	0.35	0.40	0.40	0.00	0.00	0.06	15.94
<b>Norway</b>	0.08	0.07	0.07	0.07	4.26	3.36	3.36	3.36	0.33	0.25	0.25	0.25	0.00	0.00	0.00	0.00
<b>Turkey</b>	0.10	0.10	0.10	0.10	2.00	2.10	2.10	2.10	0.20	0.21	0.21	0.21	0.00	0.00	0.00	0.00
<b>Kazakhstan</b>	0.16	0.16	0.16	0.16	1.00	1.00	1.00	1.00	0.16	0.16	0.16	0.16	0.00	0.00	0.00	0.00
<b>Serbia</b>	0.07	0.07	0.07	0.07	1.85	1.85	1.85	1.85	0.12	0.12	0.12	0.12	0.00	0.00	0.00	0.00
<b>Others</b>	1.03	1.07	1.07	1.07	0.55	0.60	0.60	0.60	0.57	0.64	0.64	0.64	0.00	0.00	0.00	0.00

World and Selected Countries and Regions

**Table 07 Rye Area, Yield, and Production**

Country / Region	Area (Million hectares)				Yield (Metric tons per hectare)				Production (Million metric tons)				Change in Production			
	Prel.		2010/11 Proj.		Prel.		2010/11 Proj.		Prel.		2010/11 Proj.		From last month		From last year	
	2008/09	2009/10	Jul	Aug	2008/09	2009/10	Jul	Aug	2008/09	2009/10	Jul	Aug	MMT	Percent	MMT	Percent
<b>World</b>	6.53	6.48	5.78	5.68	2.65	2.66	2.60	2.42	17.31	17.22	15.01	13.75	-1.26	-8.40	-3.47	-20.16
<b>United States</b>	0.11	0.10	0.10	0.10	1.86	1.75	1.70	1.70	0.20	0.18	0.17	0.17	0.00	0.00	-0.01	-3.37
<b>Total Foreign</b>	6.42	6.37	5.67	5.57	2.67	2.67	2.61	2.44	17.11	17.04	14.83	13.57	-1.26	-8.49	-3.46	-20.33
<b>EU-27</b>	2.75	2.70	2.64	2.64	3.36	3.45	3.36	3.22	9.24	9.31	8.85	8.49	-0.36	-4.07	-0.81	-8.75
Poland	1.40	1.40	1.38	1.38	2.47	2.60	2.33	2.33	3.45	3.63	3.20	3.20	0.00	0.00	-0.43	-11.85
Germany	0.74	0.66	0.64	0.64	5.08	5.70	5.78	5.23	3.74	3.76	3.70	3.35	-0.35	-9.46	-0.41	-10.90
Spain	0.11	0.13	0.13	0.13	2.55	1.39	1.77	1.88	0.28	0.18	0.23	0.25	0.02	6.52	0.06	35.36
Lithuania	0.07	0.08	0.08	0.08	2.77	2.68	2.75	2.75	0.21	0.22	0.22	0.22	0.00	0.00	0.00	0.00
Latvia	0.06	0.06	0.06	0.06	3.31	2.75	3.00	3.00	0.20	0.16	0.17	0.17	0.00	0.00	0.00	1.85
France	0.03	0.03	0.03	0.03	4.73	5.20	5.00	5.38	0.12	0.13	0.13	0.14	0.01	7.69	0.01	7.69
Denmark	0.03	0.04	0.05	0.05	5.10	5.57	5.44	5.44	0.15	0.25	0.25	0.25	0.00	0.00	0.00	0.00
Czech Republic	0.04	0.03	0.03	0.03	4.88	5.03	4.84	4.22	0.21	0.17	0.16	0.14	-0.02	-12.90	-0.03	-18.67
Austria	0.05	0.05	0.05	0.05	4.13	3.76	4.02	4.02	0.22	0.18	0.19	0.19	0.00	0.00	0.00	0.54
Sweden	0.03	0.04	0.03	0.03	6.04	5.92	6.00	6.00	0.17	0.22	0.15	0.15	0.00	0.00	-0.07	-31.51
Hungary	0.04	0.04	0.04	0.04	2.59	1.80	2.70	2.70	0.11	0.07	0.10	0.10	0.00	0.00	0.03	35.14
Slovakia	0.03	0.02	0.02	0.02	3.08	3.05	2.95	2.27	0.08	0.06	0.07	0.05	-0.02	-23.08	-0.01	-18.03
Finland	0.02	0.03	0.04	0.04	2.54	2.48	2.43	2.43	0.06	0.06	0.09	0.09	0.00	0.00	0.02	37.10
United Kingdom	0.01	0.01	0.01	0.01	6.40	6.20	6.00	6.00	0.03	0.03	0.03	0.03	0.00	0.00	0.00	-3.23
Romania	0.01	0.02	0.02	0.02	2.69	2.06	2.50	2.50	0.04	0.03	0.04	0.04	0.00	0.00	0.01	21.21
Greece	0.02	0.02	0.02	0.02	1.83	1.83	1.83	1.83	0.03	0.03	0.03	0.03	0.00	0.00	0.00	0.00
Portugal	0.02	0.02	0.02	0.02	1.10	0.89	1.00	1.00	0.02	0.02	0.02	0.02	0.00	0.00	0.00	11.76
<b>Russia</b>	2.20	2.15	1.80	1.70	2.05	2.00	1.83	1.47	4.50	4.30	3.30	2.50	-0.80	-24.24	-1.80	-41.86
<b>Belarus</b>	0.54	0.60	0.52	0.52	2.78	2.83	2.69	2.69	1.50	1.70	1.40	1.40	0.00	0.00	-0.30	-17.65
<b>Ukraine</b>	0.45	0.46	0.30	0.30	2.33	2.07	2.00	1.67	1.05	0.95	0.60	0.50	-0.10	-16.67	-0.45	-47.37
<b>Canada</b>	0.13	0.12	0.08	0.08	2.39	2.33	2.38	2.38	0.32	0.28	0.19	0.19	0.00	0.00	-0.09	-32.14
<b>Turkey</b>	0.13	0.13	0.13	0.13	1.92	2.08	2.08	2.08	0.25	0.27	0.27	0.27	0.00	0.00	0.00	0.00
<b>Argentina</b>	0.05	0.05	0.04	0.04	1.15	1.15	1.29	1.29	0.06	0.06	0.05	0.05	0.00	0.00	-0.01	-18.18
<b>Kazakhstan</b>	0.07	0.07	0.07	0.07	0.71	0.71	0.71	0.71	0.05	0.05	0.05	0.05	0.00	0.00	0.00	0.00
<b>Australia</b>	0.04	0.04	0.04	0.04	0.57	0.57	0.57	0.57	0.02	0.02	0.02	0.02	0.00	0.00	0.00	0.00
<b>Switzerland</b>	0.00	0.00	0.00	0.00	6.67	6.67	6.67	6.67	0.02	0.02	0.02	0.02	0.00	0.00	0.00	0.00
<b>Others</b>	0.06	0.06	0.06	0.06	1.69	1.38	1.38	1.38	0.11	0.09	0.09	0.09	0.00	0.00	0.00	0.00

World and Selected Countries and Regions

**Table 08 Sorghum Area, Yield, and Production**

Country / Region	Area (Million hectares)				Yield (Metric tons per hectare)				Production (Million metric tons)				Change in Production			
	Prel.		2010/11 Proj.		Prel.		2010/11 Proj.		Prel.		2010/11 Proj.		From last month		From last year	
	2008/09	2009/10	Jul	Aug	2008/09	2009/10	Jul	Aug	2008/09	2009/10	Jul	Aug	MMT	Percent	MMT	Percent
<b>World</b>	42.02	40.07	41.13	41.13	1.54	1.49	1.54	1.56	64.72	59.50	63.31	64.26	0.95	1.50	4.76	8.00
<b>United States</b>	2.94	2.23	2.10	2.10	4.08	4.35	4.24	4.65	12.00	9.73	8.89	9.74	0.85	9.56	0.01	0.12
<b>Total Foreign</b>	39.08	37.83	39.04	39.04	1.35	1.32	1.39	1.40	52.72	49.78	54.42	54.52	0.10	0.18	4.75	9.53
<b>Sub-Saharan Africa</b>																
Nigeria	7.40	7.50	7.60	7.60	1.49	1.53	1.54	1.54	11.00	11.50	11.70	11.70	0.00	0.00	0.20	1.74
Sudan	6.40	6.00	6.20	6.20	0.66	0.44	0.65	0.65	4.19	2.63	4.00	4.00	0.00	0.00	1.37	52.09
Ethiopia	1.55	1.55	1.55	1.55	1.69	1.34	1.68	1.68	2.62	2.08	2.60	2.60	0.00	0.00	0.52	24.76
Burkina	1.62	1.62	1.62	1.62	1.16	1.04	1.11	1.11	1.88	1.68	1.80	1.80	0.00	0.00	0.12	6.89
Tanzania	0.90	0.90	0.90	0.90	0.78	0.69	0.94	0.94	0.70	0.62	0.85	0.85	0.00	0.00	0.23	37.10
Niger	1.50	1.50	1.50	1.50	0.81	0.49	0.60	0.60	1.21	0.74	0.90	0.90	0.00	0.00	0.16	21.79
Uganda	0.31	0.31	0.31	0.31	1.48	1.48	1.58	1.58	0.46	0.46	0.49	0.49	0.00	0.00	0.03	6.52
Mozambique	0.50	0.50	0.45	0.45	0.76	0.76	0.78	0.78	0.38	0.38	0.35	0.35	0.00	0.00	-0.03	-7.41
Ghana	0.34	0.34	0.34	0.34	0.81	0.81	0.81	0.81	0.28	0.28	0.28	0.28	0.00	0.00	0.00	0.00
South Africa	0.09	0.09	0.09	0.09	3.26	2.91	2.56	2.56	0.28	0.25	0.23	0.23	0.00	0.00	-0.02	-9.09
<b>South Asia</b>																
India	7.70	7.00	7.50	7.50	0.95	1.00	1.00	1.00	7.31	6.98	7.50	7.50	0.00	0.00	0.52	7.45
Pakistan	0.24	0.24	0.24	0.24	0.60	0.60	0.60	0.60	0.15	0.15	0.15	0.15	0.00	0.00	0.00	0.00
<b>South America</b>																
Argentina	0.45	0.70	0.80	0.80	3.69	5.50	4.75	4.75	1.66	3.85	3.80	3.80	0.00	0.00	-0.05	-1.30
Brazil	0.85	0.78	0.85	0.85	2.26	2.34	2.35	2.35	1.91	1.83	2.00	2.00	0.00	0.00	0.18	9.59
<b>Mexico</b>	1.89	1.64	1.85	1.85	3.74	3.58	3.78	3.84	7.07	5.85	7.00	7.10	0.10	1.43	1.25	21.37
<b>China</b>	0.49	0.45	0.43	0.43	3.75	3.67	3.95	3.95	1.84	1.65	1.70	1.70	0.00	0.00	0.05	3.03
<b>Australia</b>	0.77	0.55	0.60	0.60	3.51	2.94	2.83	2.83	2.69	1.60	1.70	1.70	0.00	0.00	0.10	6.25
<b>Egypt</b>	0.16	0.16	0.16	0.16	5.63	5.63	5.63	5.63	0.90	0.90	0.90	0.90	0.00	0.00	0.00	0.00
<b>EU-27</b>	0.10	0.12	0.12	0.12	5.38	5.17	5.45	5.45	0.52	0.62	0.63	0.63	0.00	0.00	0.02	2.76
France	0.04	0.06	0.05	0.05	6.24	5.34	6.04	6.04	0.23	0.31	0.32	0.32	0.00	0.00	0.01	3.23
Italy	0.04	0.04	0.04	0.04	5.77	6.08	6.25	6.25	0.23	0.24	0.25	0.25	0.00	0.00	0.01	2.88
<b>Others</b>	5.84	5.90	5.93	5.93	0.98	0.97	0.99	0.99	5.69	5.74	5.85	5.85	0.00	0.00	0.11	1.95

World and Selected Countries and Regions

**Table 09 Rice Area, Yield, and Production**

**World and Selected Countries and Regions**

Country / Region	Area (Million hectares)				Yield (Metric tons per hectare)				Production (Million metric tons)				Change in Production			
	Prel.		2010/11 Proj.		Prel.		2010/11 Proj.		Prel.		2010/11 Proj.		From last month		From last year	
	2008/09	2009/10	Jul	Aug	2008/09	2009/10	Jul	Aug	2008/09	2009/10	Jul	Aug	MMT	Percent	MMT	Percent
<b>World</b>	157.83	155.07	160.04	160.13	4.25	4.27	4.30	4.29	448.03	442.61	459.28	459.17	-0.11	-0.02	16.55	3.74
<b>United States</b>	1.20	1.26	1.41	1.41	7.68	7.94	8.02	7.89	6.40	6.92	7.81	7.68	-0.13	-1.65	0.76	11.03
<b>Total Foreign</b>	156.63	153.81	158.63	158.71	4.22	4.24	4.26	4.26	441.63	435.70	451.47	451.49	0.02	0.00	15.79	3.62
<b>East Asia</b>																
China	29.24	29.68	29.80	29.80	6.56	6.59	6.59	6.59	134.33	137.00	137.50	137.50	0.00	0.00	0.50	0.36
Japan	1.63	1.62	1.62	1.62	6.78	6.52	6.66	6.66	8.03	7.71	7.85	7.85	0.00	0.00	0.14	1.80
Korea, South	0.94	0.92	0.90	0.90	6.99	7.19	6.91	6.91	4.84	4.92	4.60	4.60	0.00	0.00	-0.32	-6.43
Korea, North	0.59	0.59	0.59	0.59	4.89	5.02	5.05	5.05	1.86	1.91	1.92	1.92	0.00	0.00	0.01	0.52
<b>South Asia</b>																
India	45.40	41.00	45.00	45.00	3.28	3.26	3.30	3.30	99.18	89.13	99.00	99.00	0.00	0.00	9.87	11.07
Bangladesh	11.10	11.60	11.70	11.80	4.19	4.01	4.14	4.11	31.00	31.00	32.30	32.30	0.00	0.00	1.30	4.19
Pakistan	2.91	2.80	2.80	2.80	3.45	3.48	3.48	3.48	6.70	6.50	6.50	6.50	0.00	0.00	0.00	0.00
<b>Southeast Asia</b>																
Indonesia	12.17	12.00	12.20	12.20	4.88	5.01	5.08	5.08	38.30	38.80	40.00	40.00	0.00	0.00	1.20	3.09
Vietnam	7.33	7.37	7.35	7.35	5.30	5.29	5.39	5.39	24.39	24.38	24.75	24.75	0.00	0.00	0.37	1.52
Thailand	10.80	10.94	11.00	11.00	2.78	2.81	2.84	2.84	19.85	20.30	20.60	20.60	0.00	0.00	0.30	1.48
Burma	6.70	7.00	7.10	7.10	2.61	2.61	2.67	2.67	10.15	10.60	11.00	11.00	0.00	0.00	0.40	3.80
Philippines	4.53	4.40	4.45	4.45	3.77	3.52	3.85	3.85	10.75	9.76	10.80	10.80	0.00	0.00	1.04	10.69
Cambodia	2.61	2.68	2.75	2.75	2.75	2.84	2.77	2.77	4.52	4.78	4.80	4.80	0.00	0.00	0.02	0.42
Laos	0.83	0.84	0.86	0.86	3.54	3.61	3.68	3.68	1.76	1.82	1.90	1.90	0.00	0.00	0.08	4.34
Malaysia	0.66	0.67	0.67	0.67	3.58	3.68	3.70	3.70	1.54	1.59	1.60	1.60	0.00	0.00	0.01	0.63
<b>South America</b>																
Brazil	2.91	2.76	2.85	2.85	4.33	4.07	4.33	4.33	8.57	7.64	8.40	8.40	0.00	0.00	0.76	9.93
Peru	0.38	0.40	0.39	0.39	7.35	7.40	7.44	7.44	1.93	2.06	1.98	1.98	0.00	0.00	-0.09	-4.17
<b>Sub-Saharan Africa</b>																
Nigeria	2.30	2.40	2.45	2.45	2.32	2.36	2.45	2.45	3.20	3.40	3.60	3.60	0.00	0.00	0.20	5.88
Madagascar	1.36	1.38	1.38	1.38	2.88	3.05	3.05	3.05	2.51	2.69	2.69	2.69	0.00	0.00	0.00	0.00
<b>EU-27</b>	0.41	0.46	0.47	0.47	6.16	6.81	6.73	6.73	1.62	1.98	2.01	2.01	0.00	0.00	0.03	1.31
Italy	0.22	0.24	0.24	0.24	5.99	6.65	6.66	6.66	0.82	0.96	0.98	0.98	0.00	0.00	0.01	1.35
Spain	0.10	0.12	0.13	0.13	6.63	7.55	7.31	7.31	0.45	0.63	0.65	0.65	0.00	0.00	0.02	2.54
<b>Egypt</b>	0.67	0.67	0.60	0.60	10.08	9.87	10.00	10.00	4.40	4.30	3.90	3.90	0.00	0.00	-0.40	-9.30
<b>Iran</b>	0.58	0.63	0.63	0.63	3.95	4.85	4.93	4.93	1.50	2.00	2.05	2.05	0.00	0.00	0.05	2.50
<b>Others</b>	10.59	11.02	11.09	11.08	3.01	2.99	3.01	3.01	20.70	21.43	21.73	21.74	0.02	0.08	0.31	1.47

Yield is on a rough basis, before the milling process  
 Production is on a milled basis, after the milling process

**Table 10 Total Oilseed Area, Yield, and Production**

**World and Selected Countries and Regions**

Country / Region	Area (Million hectares)				Yield (Metric tons per hectare)				Production (Million metric tons)				Change in Production			
	Prel.		2010/11 Proj.		Prel.		2010/11 Proj.		Prel.		2010/11 Proj.		From last month		From last year	
	2008/09	2009/10	Jul	Aug	2008/09	2009/10	Jul	Aug	2008/09	2009/10	Jul	Aug	MMT	Percent	MMT	Percent
<b>World Total</b>	--	--	--	--	--	--	--	--	396.37	441.20	440.74	439.74	-1.00	-0.23	-1.46	-0.33
<b>Total Foreign</b>	--	--	--	--	--	--	--	--	307.17	342.30	339.96	336.40	-3.57	-1.05	-5.90	-1.72
Oilseed, Copra	--	--	--	--	--	--	--	--	5.88	5.88	5.96	5.96	0.00	0.00	0.08	1.36
Oilseed, Palm Kernel	--	--	--	--	--	--	--	--	11.88	12.36	13.29	13.29	0.00	0.00	0.94	7.57
<b>Major Oilseeds</b>	202.28	204.79	210.29	210.21	1.87	2.07	2.00	2.00	378.61	422.97	421.49	420.49	-1.00	-0.24	-2.48	-0.59
<b>United States</b>	35.27	35.51	37.70	37.79	2.53	2.78	2.67	2.73	89.20	98.90	100.77	103.34	2.57	2.55	4.44	4.49
<b>Foreign Oilseeds</b>	167.01	169.28	172.59	172.42	1.73	1.91	1.86	1.84	289.41	324.07	320.71	317.15	-3.57	-1.11	-6.92	-2.14
<b>South America</b>	45.96	50.22	50.47	50.47	2.25	2.80	2.64	2.64	103.61	140.74	133.06	133.06	0.00	0.00	-7.68	-5.45
Brazil	22.73	24.50	24.68	24.68	2.65	2.92	2.75	2.75	60.25	71.43	67.97	67.97	0.00	0.00	-3.47	-4.85
Argentina	18.39	20.74	20.68	20.68	1.93	2.79	2.64	2.64	35.51	57.89	54.52	54.52	0.00	0.00	-3.38	-5.83
Paraguay	2.82	2.85	2.98	2.98	1.55	2.60	2.27	2.27	4.37	7.40	6.77	6.77	0.00	0.00	-0.63	-8.52
Bolivia	1.19	1.14	1.10	1.10	1.72	1.74	1.76	1.76	2.05	1.98	1.94	1.94	0.00	0.00	-0.04	-2.03
<b>China</b>	26.98	26.48	26.33	26.33	2.15	2.17	2.16	2.16	58.12	57.47	56.81	56.81	0.00	0.00	-0.66	-1.15
<b>South Asia</b>	37.55	37.16	38.10	37.95	1.00	0.98	1.04	1.03	37.70	36.42	39.57	39.27	-0.30	-0.76	2.85	7.83
India	33.50	33.01	33.75	33.75	0.97	0.94	1.00	1.00	32.65	30.97	33.70	33.90	0.20	0.59	2.93	9.46
Pakistan	3.73	3.83	4.03	3.88	1.29	1.36	1.39	1.32	4.80	5.19	5.61	5.11	-0.50	-8.91	-0.08	-1.54
<b>EU-27</b>	10.47	11.03	11.41	11.36	2.60	2.70	2.55	2.50	27.19	29.80	29.12	28.37	-0.75	-2.58	-1.43	-4.80
France	2.09	2.24	2.22	2.22	3.05	3.30	2.96	2.93	6.38	7.39	6.58	6.51	-0.08	-1.14	-0.89	-12.02
Germany	1.40	1.50	1.53	1.53	3.73	4.25	3.89	3.70	5.20	6.36	5.94	5.65	-0.29	-4.91	-0.71	-11.22
Poland	0.78	0.82	0.81	0.81	2.72	2.95	2.74	2.56	2.11	2.41	2.21	2.06	-0.15	-6.80	-0.35	-14.54
Romania	1.25	1.28	1.48	1.44	1.61	1.50	1.54	1.52	2.01	1.92	2.29	2.19	-0.10	-4.37	0.28	14.36
Hungary	0.83	0.82	0.84	0.84	2.67	2.32	2.38	2.33	2.21	1.91	1.98	1.95	-0.04	-1.76	0.04	2.15
United Kingdom	0.60	0.58	0.62	0.65	3.30	3.36	3.33	3.27	1.97	1.95	2.08	2.13	0.05	2.41	0.18	8.97
<b>Former Soviet Union - 12</b>	17.53	16.60	18.11	18.08	1.34	1.29	1.34	1.19	23.56	21.44	24.29	21.58	-2.71	-11.16	0.14	0.64
Russia	7.34	6.95	7.73	7.73	1.21	1.16	1.22	1.08	8.85	8.03	9.41	8.35	-1.06	-11.26	0.32	3.93
Ukraine	6.45	5.98	6.20	6.20	1.66	1.58	1.69	1.47	10.70	9.45	10.50	9.10	-1.40	-13.33	-0.35	-3.70
Uzbekistan	1.42	1.30	1.30	1.30	1.27	1.21	1.48	1.48	1.80	1.58	1.93	1.93	0.00	0.00	0.35	22.22
<b>Canada</b>	7.76	7.56	7.32	7.32	2.07	2.04	1.94	1.94	16.09	15.44	14.22	14.22	0.00	0.00	-1.23	-7.93
<b>Africa</b>	12.42	12.33	12.53	12.53	0.87	0.86	0.87	0.87	10.81	10.57	10.86	10.86	0.00	0.00	0.29	2.72
Nigeria	2.08	2.08	2.08	2.08	1.05	1.05	1.05	1.05	2.18	2.19	2.19	2.19	0.00	0.00	0.00	0.00
<b>Southeast Asia</b>	3.70	3.73	3.74	3.74	1.34	1.34	1.34	1.34	4.94	4.98	4.99	4.99	0.00	0.00	0.01	0.20
Indonesia	1.38	1.38	1.38	1.38	1.50	1.49	1.49	1.49	2.06	2.06	2.06	2.06	0.00	0.00	0.00	0.00
<b>Australia</b>	1.98	1.68	1.97	2.03	1.24	1.52	1.49	1.55	2.45	2.56	2.93	3.15	0.22	7.50	0.60	23.32
<b>Others</b>	2.66	2.51	2.61	2.61	1.86	1.86	1.86	1.85	4.95	4.66	4.87	4.84	-0.03	-0.51	0.19	4.06

World Total and Total Foreign: (Major Oilseeds plus copra and palm kernel)

Major Oilseeds: (soybeans, sunflowerseeds, peanuts(inshell), cottonseed and rapeseed)



**Table 11 Soybean Area, Yield, and Production**

Country / Region	Area (Million hectares)				Yield (Metric tons per hectare)				Production (Million metric tons)				Change in Production			
	2008/09	Prel.	2010/11 Proj.		2008/09	Prel.	2010/11 Proj.		2008/09	Prel.	2010/11 Proj.		From last month		From last year	
		2009/10	Jul	Aug		2009/10	Jul	Aug		2009/10	Jul	Aug	MMT	Percent	MMT	Percent
<b>World</b>	96.40	101.96	101.97	101.97	2.20	2.55	2.46	2.49	211.96	259.90	251.29	253.69	2.41	0.96	-6.20	-2.39
<b>United States</b>	30.22	30.91	31.56	31.56	2.67	2.96	2.88	2.96	80.75	91.42	91.04	93.44	2.41	2.64	2.02	2.21
<b>Total Foreign</b>	66.18	71.06	70.41	70.41	1.98	2.37	2.28	2.28	131.22	168.48	160.25	160.25	0.00	0.00	-8.23	-4.88
<b>South America</b>																
Brazil	21.70	23.50	23.50	23.50	2.66	2.94	2.77	2.77	57.80	69.00	65.00	65.00	0.00	0.00	-4.00	-5.80
Argentina	16.00	18.60	18.00	18.00	2.00	2.93	2.78	2.78	32.00	54.50	50.00	50.00	0.00	0.00	-4.50	-8.26
Paraguay	2.55	2.68	2.75	2.75	1.57	2.69	2.36	2.36	4.00	7.20	6.50	6.50	0.00	0.00	-0.70	-9.72
Bolivia	0.89	0.90	0.85	0.85	1.80	1.85	1.86	1.86	1.60	1.67	1.58	1.58	0.00	0.00	-0.09	-5.11
Uruguay	0.65	0.85	0.90	0.90	1.80	2.12	1.80	1.80	1.17	1.79	1.62	1.62	0.00	0.00	-0.17	-9.70
<b>East Asia</b>																
China	9.13	8.80	8.60	8.60	1.70	1.67	1.70	1.70	15.54	14.70	14.60	14.60	0.00	0.00	-0.10	-0.68
Korea, South	0.08	0.08	0.08	0.08	1.76	1.71	1.81	1.81	0.13	0.13	0.15	0.15	0.00	0.00	0.02	11.54
Korea, North	0.14	0.14	0.14	0.14	1.15	1.08	1.19	1.19	0.16	0.15	0.16	0.16	0.00	0.00	0.01	6.67
Japan	0.15	0.15	0.15	0.15	1.78	1.57	1.55	1.55	0.26	0.23	0.23	0.23	0.00	0.00	0.00	-0.88
<b>India</b>	9.60	9.60	9.00	9.00	0.95	0.91	0.98	0.98	9.10	8.75	8.80	8.80	0.00	0.00	0.05	0.57
<b>Canada</b>	1.20	1.38	1.50	1.50	2.79	2.54	2.60	2.60	3.34	3.50	3.90	3.90	0.00	0.00	0.40	11.43
<b>Former Soviet Union - 12</b>																
Ukraine	0.55	0.63	0.90	0.90	1.45	1.68	1.67	1.67	0.80	1.05	1.50	1.50	0.00	0.00	0.45	42.86
Russia	0.71	0.79	1.00	1.00	1.05	1.19	1.15	1.15	0.74	0.94	1.15	1.15	0.00	0.00	0.21	22.08
<b>Southeast Asia</b>																
Indonesia	0.62	0.62	0.62	0.62	1.29	1.29	1.29	1.29	0.80	0.80	0.80	0.80	0.00	0.00	0.00	0.00
Vietnam	0.19	0.20	0.20	0.20	1.40	1.50	1.50	1.50	0.27	0.30	0.30	0.30	0.00	0.00	0.00	0.00
Thailand	0.12	0.11	0.12	0.12	1.50	1.55	1.50	1.50	0.18	0.17	0.18	0.18	0.00	0.00	0.01	5.88
Burma	0.16	0.16	0.16	0.16	1.22	1.19	1.19	1.19	0.19	0.19	0.19	0.19	0.00	0.00	0.00	0.00
<b>EU-27</b>	0.24	0.30	0.35	0.35	2.70	2.84	2.86	2.86	0.64	0.86	1.00	1.00	0.00	0.00	0.14	15.87
Italy	0.11	0.14	0.17	0.17	3.20	3.50	3.52	3.52	0.35	0.49	0.59	0.59	0.00	0.00	0.10	20.12
France	0.02	0.04	0.05	0.05	2.82	2.59	2.60	2.60	0.06	0.11	0.13	0.13	0.00	0.00	0.02	14.04
<b>Sub-Saharan Africa</b>																
South Africa	0.24	0.31	0.32	0.32	2.17	1.89	1.83	1.83	0.52	0.59	0.58	0.58	0.00	0.00	-0.01	-2.04
Nigeria	0.44	0.44	0.44	0.44	1.02	1.02	1.02	1.02	0.45	0.45	0.45	0.45	0.00	0.00	0.00	0.00
Uganda	0.15	0.15	0.15	0.15	1.10	1.10	1.10	1.10	0.17	0.17	0.17	0.17	0.00	0.00	0.00	0.00
<b>Serbia</b>	0.15	0.15	0.15	0.15	2.41	2.41	2.41	2.41	0.35	0.35	0.35	0.35	0.00	0.00	0.00	0.00
<b>Mexico</b>	0.08	0.07	0.07	0.07	2.01	1.50	1.50	1.50	0.15	0.11	0.11	0.11	0.00	0.00	0.00	0.00
<b>Iran</b>	0.12	0.12	0.12	0.12	1.82	2.17	2.26	2.26	0.21	0.25	0.26	0.26	0.00	0.00	0.01	4.00
<b>Others</b>	0.35	0.35	0.37	0.37	1.85	1.84	1.90	1.90	0.65	0.64	0.70	0.70	0.00	0.00	0.06	8.59

World and Selected Countries and Regions

**Table 12 Cottonseed Area, Yield, and Production**

Country / Region	Area (Million hectares)				Yield (Metric tons per hectare)				Production (Million metric tons)				Change in Production			
	2008/09	Prel.	2010/11 Proj.		2008/09	Prel.	2010/11 Proj.		2008/09	Prel.	2010/11 Proj.		From last month		From last year	
		2009/10	Jul	Aug		2009/10	Jul	Aug		2009/10	Jul	Aug	MMT	Percent	MMT	Percent
<b>World</b>	29.99	29.77	31.71	31.66	1.37	1.33	1.38	1.38	41.11	39.74	43.88	43.78	-0.09	-0.21	4.04	10.16
<b>United States</b>	3.06	3.05	4.21	4.30	1.27	1.24	1.31	1.32	3.90	3.76	5.53	5.69	0.16	2.93	1.92	51.09
<b>Total Foreign</b>	26.93	26.73	27.49	27.35	1.38	1.35	1.39	1.39	37.21	35.98	38.35	38.10	-0.26	-0.66	2.12	5.88
<b>China</b>	6.05	5.30	5.40	5.40	2.38	2.40	2.39	2.39	14.40	12.74	12.93	12.93	0.00	0.00	0.19	1.49
<b>South Asia</b>																
India	9.37	10.26	10.30	10.30	1.02	0.98	1.03	1.05	9.60	10.10	10.60	10.80	0.20	1.89	0.70	6.93
Pakistan	2.90	3.00	3.20	3.05	1.31	1.39	1.44	1.34	3.79	4.18	4.60	4.10	-0.50	-10.87	-0.08	-1.91
<b>Former Soviet Union - 12</b>																
Uzbekistan	1.42	1.30	1.30	1.30	1.27	1.21	1.48	1.48	1.80	1.58	1.93	1.93	0.00	0.00	0.35	22.22
Turkmenistan	0.60	0.55	0.58	0.58	0.88	0.89	0.89	0.89	0.53	0.49	0.51	0.51	0.00	0.00	0.02	4.08
Tajikistan	0.23	0.17	0.17	0.17	0.83	0.88	0.88	0.88	0.19	0.15	0.15	0.15	0.00	0.00	0.00	0.00
Kazakhstan	0.16	0.12	0.13	0.13	1.06	1.25	1.04	1.04	0.17	0.15	0.14	0.14	0.00	0.00	-0.02	-10.00
<b>South America</b>																
Brazil	0.84	0.84	1.00	1.00	2.42	2.51	2.61	2.61	2.04	2.10	2.61	2.61	0.00	0.00	0.51	24.10
Argentina	0.30	0.43	0.45	0.45	0.69	0.70	0.74	0.74	0.21	0.30	0.34	0.34	0.00	0.00	0.04	11.67
<b>Middle East</b>																
Turkey	0.34	0.28	0.33	0.33	2.06	2.14	2.03	1.95	0.70	0.60	0.67	0.65	-0.03	-3.73	0.05	7.50
Syria	0.18	0.17	0.17	0.17	2.73	2.75	2.75	2.75	0.48	0.45	0.45	0.45	0.00	0.00	0.00	0.00
Iran	0.10	0.09	0.10	0.10	0.97	0.99	1.00	1.00	0.10	0.09	0.10	0.10	0.00	0.00	0.01	12.36
<b>Australia</b>	0.16	0.20	0.25	0.26	2.44	2.50	2.52	2.69	0.40	0.50	0.63	0.70	0.07	11.11	0.20	40.00
<b>EU-27</b>	0.30	0.29	0.31	0.31	1.57	1.59	1.51	1.51	0.48	0.46	0.47	0.47	0.00	0.00	0.01	1.73
Greece	0.25	0.24	0.25	0.25	1.78	1.79	1.68	1.68	0.45	0.42	0.42	0.42	0.00	0.00	0.00	0.00
Spain	0.05	0.06	0.06	0.06	0.57	0.75	0.81	0.81	0.03	0.04	0.05	0.05	0.00	0.00	0.01	19.05
<b>Sub-Saharan Africa</b>																
Burkina	0.44	0.45	0.45	0.45	0.53	0.46	0.54	0.54	0.24	0.21	0.24	0.24	0.00	0.00	0.04	16.91
Mali	0.19	0.20	0.20	0.20	0.52	0.60	0.57	0.57	0.10	0.12	0.11	0.11	0.00	0.00	-0.01	-5.83
Cameroon	0.16	0.15	0.15	0.15	0.78	0.75	0.83	0.83	0.13	0.11	0.13	0.13	0.00	0.00	0.01	11.61
Sudan	0.09	0.04	0.09	0.09	1.08	0.83	0.96	0.96	0.10	0.03	0.08	0.08	0.00	0.00	0.05	148.48
Zimbabwe	0.37	0.38	0.38	0.38	0.43	0.45	0.46	0.46	0.16	0.17	0.18	0.18	0.00	0.00	0.00	2.34
Nigeria	0.40	0.40	0.40	0.40	0.47	0.49	0.49	0.49	0.18	0.19	0.19	0.19	0.00	0.00	0.00	0.00
Benin	0.21	0.18	0.18	0.18	0.65	0.64	0.64	0.64	0.13	0.12	0.12	0.12	0.00	0.00	0.00	0.00
Uganda	0.27	0.27	0.27	0.27	0.32	0.27	0.32	0.32	0.09	0.07	0.09	0.09	0.00	0.00	0.01	17.57
<b>Egypt</b>	0.13	0.12	0.12	0.12	1.17	1.20	1.20	1.20	0.15	0.14	0.14	0.14	0.00	0.00	0.00	0.00
<b>Mexico</b>	0.12	0.12	0.12	0.12	1.85	1.85	1.85	1.85	0.23	0.23	0.23	0.23	0.00	0.00	0.00	0.00
<b>Burma</b>	0.30	0.30	0.30	0.30	0.63	0.63	0.63	0.63	0.19	0.19	0.19	0.19	0.00	0.00	0.00	0.00
<b>Others</b>	1.30	1.13	1.16	1.16	0.49	0.45	0.47	0.47	0.64	0.50	0.54	0.54	0.00	0.00	0.04	7.75

World and Selected Countries and Regions

**Table 13 Peanut Area, Yield, and Production**

Country / Region	Area (Million hectares)				Yield (Metric tons per hectare)				Production (Million metric tons)				Change in Production			
	Prel.		2010/11 Proj.		Prel.		2010/11 Proj.		Prel.		2010/11 Proj.		From last month		From last year	
	2008/09	2009/10	Jul	Aug	2008/09	2009/10	Jul	Aug	2008/09	2009/10	Jul	Aug	MMT	Percent	MMT	Percent
<b>World</b>	21.12	20.06	21.23	21.23	1.63	1.64	1.64	1.63	34.47	32.92	34.76	34.67	-0.08	-0.24	1.75	5.32
<b>United States</b>	0.61	0.44	0.51	0.51	3.84	3.83	3.76	3.59	2.34	1.67	1.92	1.83	-0.08	-4.33	0.16	9.56
<b>Total Foreign</b>	20.51	19.62	20.72	20.72	1.57	1.59	1.58	1.58	32.13	31.25	32.84	32.84	0.00	0.00	1.59	5.09
<b>China</b>	4.25	4.26	4.30	4.30	3.36	3.45	3.44	3.44	14.29	14.70	14.80	14.80	0.00	0.00	0.10	0.68
<b>South Asia</b>																
India	6.40	5.30	6.35	6.35	0.98	0.92	1.01	1.01	6.25	4.90	6.40	6.40	0.00	0.00	1.50	30.61
Pakistan	0.11	0.11	0.11	0.11	0.90	0.90	0.90	0.90	0.10	0.10	0.10	0.10	0.00	0.00	0.00	0.00
<b>Sub-Saharan Africa</b>	7.36	7.61	7.61	7.61	0.92	0.91	0.91	0.91	6.75	6.92	6.91	6.91	0.00	0.00	-0.02	-0.22
Nigeria	1.25	1.25	1.25	1.25	1.24	1.24	1.24	1.24	1.55	1.55	1.55	1.55	0.00	0.00	0.00	0.00
Senegal	0.59	0.83	0.83	0.83	0.77	0.75	0.75	0.75	0.45	0.63	0.63	0.63	0.00	0.00	0.00	0.00
Chad	0.35	0.35	0.35	0.35	1.32	1.32	1.32	1.32	0.47	0.47	0.47	0.47	0.00	0.00	0.00	0.00
Ghana	0.47	0.47	0.47	0.47	0.94	0.94	0.94	0.94	0.44	0.44	0.44	0.44	0.00	0.00	0.00	0.00
Sudan	1.00	1.00	1.00	1.00	0.85	0.85	0.85	0.85	0.85	0.85	0.85	0.85	0.00	0.00	0.00	0.00
Congo (Kinshasa)	0.48	0.48	0.48	0.48	0.78	0.78	0.78	0.78	0.37	0.37	0.37	0.37	0.00	0.00	0.00	0.00
Burkina	0.35	0.35	0.35	0.35	1.01	1.01	1.01	1.01	0.35	0.35	0.35	0.35	0.00	0.00	0.00	0.00
Guinea	0.21	0.21	0.21	0.21	1.24	1.24	1.24	1.24	0.26	0.26	0.26	0.26	0.00	0.00	0.00	0.00
Cameroon	0.31	0.31	0.31	0.31	0.77	0.77	0.77	0.77	0.24	0.24	0.24	0.24	0.00	0.00	0.00	0.00
Mali	0.25	0.25	0.25	0.25	1.10	1.10	1.10	1.10	0.28	0.28	0.28	0.28	0.00	0.00	0.00	0.00
Malawi	0.22	0.22	0.22	0.22	1.20	1.20	1.20	1.20	0.27	0.27	0.27	0.27	0.00	0.00	0.00	0.00
Cote d'Ivoire	0.15	0.15	0.15	0.15	1.00	1.00	1.00	1.00	0.15	0.15	0.15	0.15	0.00	0.00	0.00	0.00
Uganda	0.21	0.21	0.21	0.21	0.70	0.70	0.70	0.70	0.15	0.15	0.15	0.15	0.00	0.00	0.00	0.00
Central African Republic	0.13	0.13	0.13	0.13	1.12	1.12	1.12	1.12	0.14	0.14	0.14	0.14	0.00	0.00	0.00	0.00
Benin	0.16	0.16	0.16	0.16	0.81	0.81	0.81	0.81	0.13	0.13	0.13	0.13	0.00	0.00	0.00	0.00
Mozambique	0.29	0.29	0.29	0.29	0.38	0.38	0.38	0.38	0.11	0.11	0.11	0.11	0.00	0.00	0.00	0.00
Niger	0.26	0.26	0.26	0.26	0.42	0.42	0.42	0.42	0.11	0.11	0.11	0.11	0.00	0.00	0.00	0.00
South Africa	0.06	0.06	0.06	0.06	2.33	2.28	2.02	2.02	0.13	0.13	0.12	0.12	0.00	0.00	-0.02	-11.54
<b>Southeast Asia</b>																
Indonesia	0.75	0.75	0.75	0.75	1.67	1.67	1.67	1.67	1.25	1.25	1.25	1.25	0.00	0.00	0.00	0.00
Burma	0.65	0.67	0.67	0.67	1.54	1.49	1.49	1.49	1.00	1.00	1.00	1.00	0.00	0.00	0.00	0.00
Vietnam	0.26	0.26	0.26	0.26	2.09	2.12	2.12	2.12	0.53	0.55	0.55	0.55	0.00	0.00	0.00	0.00
Thailand	0.07	0.07	0.07	0.07	1.77	1.77	1.77	1.77	0.12	0.12	0.12	0.12	0.00	0.00	0.00	0.00
<b>South America</b>																
Argentina	0.28	0.22	0.23	0.23	3.13	3.59	3.47	3.47	0.86	0.79	0.78	0.78	0.00	0.00	-0.01	-1.27
Brazil	0.12	0.10	0.10	0.10	2.62	2.47	2.50	2.50	0.30	0.24	0.25	0.25	0.00	0.00	0.02	6.38
<b>Egypt</b>	0.06	0.06	0.06	0.06	3.17	3.17	3.17	3.17	0.19	0.19	0.19	0.19	0.00	0.00	0.00	0.00
<b>Mexico</b>	0.05	0.05	0.05	0.05	1.56	1.56	1.56	1.56	0.07	0.07	0.07	0.07	0.00	0.00	0.00	0.00
<b>Others</b>	0.19	0.19	0.19	0.19	2.34	2.34	2.34	2.34	0.43	0.43	0.43	0.43	0.00	0.00	0.00	0.00

World and Selected Countries and Regions

**Table 14 Sunflowerseed Area, Yield, and Production**

Country / Region	Area (Million hectares)				Yield (Metric tons per hectare)				Production (Million metric tons)				Change in Production			
	Prel.		2010/11 Proj.		Prel.		2010/11 Proj.		Prel.		2010/11 Proj.		From last month		From last year	
	2008/09	2009/10	Jul	Aug	2008/09	2009/10	Jul	Aug	2008/09	2009/10	Jul	Aug	MMT	Percent	MMT	Percent
<b>World</b>	23.68	22.26	24.00	23.95	1.40	1.37	1.41	1.32	33.22	30.48	33.74	31.61	-2.13	-6.32	1.13	3.70
<b>United States</b>	0.97	0.79	0.81	0.81	1.60	1.74	1.61	1.63	1.55	1.38	1.31	1.33	0.02	1.30	-0.05	-3.70
<b>Total Foreign</b>	22.71	21.47	23.19	23.14	1.39	1.36	1.40	1.31	31.67	29.10	32.43	30.28	-2.15	-6.63	1.18	4.05
<b>Former Soviet Union - 12</b>																
Russia	6.00	5.60	6.10	6.10	1.23	1.15	1.23	1.07	7.35	6.43	7.50	6.50	-1.00	-13.33	0.08	1.17
Ukraine	4.50	4.35	4.30	4.30	1.56	1.49	1.63	1.40	7.00	6.50	7.00	6.00	-1.00	-14.29	-0.50	-7.69
Moldova	0.23	0.25	0.25	0.25	1.63	1.60	1.60	1.60	0.37	0.40	0.40	0.40	0.00	0.00	0.00	0.00
Kazakhstan	0.58	0.72	1.10	1.10	0.32	0.51	0.41	0.41	0.19	0.37	0.45	0.45	0.00	0.00	0.08	22.28
<b>South America</b>																
Argentina	1.81	1.49	2.00	2.00	1.35	1.55	1.70	1.70	2.44	2.30	3.40	3.40	0.00	0.00	1.10	47.83
Uruguay	0.06	0.02	0.02	0.02	0.93	1.53	1.60	1.60	0.05	0.02	0.03	0.03	0.00	0.00	0.01	39.13
Bolivia	0.30	0.24	0.25	0.25	1.48	1.32	1.42	1.42	0.45	0.31	0.36	0.36	0.00	0.00	0.05	14.52
<b>China</b>	0.96	0.92	0.93	0.93	1.86	1.77	1.81	1.81	1.79	1.63	1.68	1.68	0.00	0.00	0.05	3.07
<b>EU-27</b>	3.75	3.94	3.95	3.90	1.89	1.79	1.78	1.77	7.08	7.03	7.05	6.90	-0.15	-2.13	-0.13	-1.81
France	0.63	0.72	0.70	0.70	2.51	2.33	2.36	2.36	1.58	1.68	1.65	1.65	0.00	0.00	-0.03	-1.79
Hungary	0.55	0.53	0.53	0.53	2.71	2.35	2.35	2.35	1.49	1.26	1.23	1.23	0.00	0.00	-0.02	-1.67
Spain	0.73	0.85	0.87	0.80	1.13	1.03	1.06	1.00	0.82	0.88	0.93	0.80	-0.13	-13.51	-0.08	-8.68
Italy	0.11	0.13	0.14	0.14	2.29	2.23	2.22	2.22	0.26	0.28	0.30	0.30	0.00	0.00	0.02	7.53
Slovakia	0.08	0.08	0.08	0.08	2.56	2.40	2.50	2.50	0.19	0.20	0.21	0.21	0.00	0.00	0.01	3.96
<b>South Asia</b>																
India	1.53	1.40	1.50	1.50	0.65	0.59	0.60	0.60	1.00	0.82	0.90	0.90	0.00	0.00	0.08	9.76
Pakistan	0.45	0.45	0.45	0.45	1.52	1.52	1.52	1.52	0.69	0.69	0.69	0.69	0.00	0.00	0.00	0.00
<b>Turkey</b>	0.50	0.46	0.50	0.50	1.66	1.74	1.75	1.75	0.83	0.80	0.88	0.88	0.00	0.00	0.08	9.38
<b>South Africa</b>	0.64	0.40	0.55	0.55	1.26	1.25	1.27	1.27	0.80	0.50	0.70	0.70	0.00	0.00	0.20	40.00
<b>Burma</b>	0.55	0.55	0.55	0.55	0.67	0.67	0.67	0.67	0.37	0.37	0.37	0.37	0.00	0.00	0.00	0.00
<b>Serbia</b>	0.20	0.17	0.17	0.17	2.45	2.35	2.35	2.35	0.49	0.40	0.40	0.40	0.00	0.00	0.00	0.00
<b>Canada</b>	0.07	0.07	0.07	0.07	1.62	1.60	1.60	1.60	0.11	0.12	0.12	0.12	0.00	0.00	0.00	0.00
<b>Australia</b>	0.06	0.04	0.06	0.06	1.27	1.29	1.27	1.27	0.07	0.05	0.07	0.07	0.00	0.00	0.03	55.56
<b>Others</b>	0.53	0.41	0.44	0.44	1.13	0.93	1.02	1.02	0.59	0.38	0.45	0.45	0.00	0.00	0.06	16.71

World and Selected Countries and Regions

**Table 15 Rapeseed Area, Yield, and Production**

Country / Region	Area (Million hectares)				Yield (Metric tons per hectare)				Production (Million metric tons)				Change in Production			
	Prel.		2010/11 Proj.		Prel.		2010/11 Proj.		Prel.		2010/11 Proj.		From last month		From last year	
	2008/09	2009/10	Jul	Aug	2008/09	2009/10	Jul	Aug	2008/09	2009/10	Jul	Aug	MMT	Percent	MMT	Percent
<b>World</b>	31.09	30.74	31.39	31.41	1.86	1.95	1.84	1.81	57.84	59.93	57.83	56.74	-1.09	-1.89	-3.19	-5.32
<b>United States</b>	0.40	0.33	0.60	0.60	1.64	2.03	1.64	1.75	0.66	0.67	0.99	1.06	0.07	6.88	0.39	57.85
<b>Total Foreign</b>	30.69	30.41	30.78	30.80	1.86	1.95	1.85	1.81	57.18	59.26	56.84	55.68	-1.16	-2.04	-3.58	-6.03
<b>EU-27</b>	6.18	6.50	6.80	6.80	3.07	3.30	3.03	2.94	19.00	21.45	20.60	20.00	-0.60	-2.91	-1.45	-6.75
Germany	1.37	1.47	1.50	1.50	3.76	4.29	3.93	3.73	5.16	6.31	5.89	5.60	-0.29	-4.96	-0.71	-11.21
France	1.44	1.48	1.47	1.47	3.29	3.79	3.27	3.21	4.74	5.60	4.80	4.73	-0.08	-1.56	-0.88	-15.63
United Kingdom	0.60	0.58	0.62	0.65	3.30	3.36	3.33	3.27	1.97	1.95	2.08	2.13	0.05	2.41	0.18	8.97
Poland	0.77	0.81	0.80	0.80	2.73	2.96	2.75	2.56	2.11	2.40	2.20	2.05	-0.15	-6.82	-0.35	-14.58
Czech Republic	0.36	0.36	0.33	0.35	2.94	3.18	3.18	3.14	1.05	1.13	1.05	1.10	0.05	4.76	-0.03	-2.48
Denmark	0.17	0.16	0.15	0.15	3.66	3.90	3.53	3.53	0.63	0.64	0.53	0.53	0.00	0.00	-0.11	-16.54
Hungary	0.25	0.26	0.28	0.28	2.62	2.23	2.45	2.32	0.66	0.58	0.69	0.65	-0.04	-5.11	0.07	11.88
Romania	0.39	0.44	0.62	0.58	1.87	1.55	1.61	1.55	0.72	0.68	1.00	0.90	-0.10	-10.00	0.22	32.35
Slovakia	0.16	0.17	0.16	0.16	2.60	2.45	2.44	2.44	0.42	0.41	0.39	0.39	0.00	0.00	-0.02	-4.65
Sweden	0.09	0.10	0.11	0.11	2.85	2.99	2.95	2.95	0.26	0.30	0.31	0.31	0.00	0.00	0.01	3.68
Lithuania	0.16	0.19	0.20	0.20	2.04	2.17	2.10	2.10	0.33	0.42	0.42	0.42	0.00	0.00	0.00	0.96
Latvia	0.08	0.09	0.10	0.10	2.40	2.18	2.26	2.26	0.20	0.21	0.22	0.22	0.00	0.00	0.01	4.88
Austria	0.06	0.06	0.06	0.06	3.11	3.00	3.05	3.05	0.17	0.17	0.18	0.18	0.00	0.00	0.01	5.26
Finland	0.06	0.08	0.08	0.08	1.39	1.57	1.55	1.55	0.09	0.13	0.13	0.13	0.00	0.00	0.00	0.00
Estonia	0.08	0.08	0.08	0.08	1.42	1.65	1.42	1.42	0.11	0.13	0.11	0.11	0.00	0.00	-0.02	-13.95
<b>China</b>	6.59	7.20	7.10	7.10	1.84	1.90	1.80	1.80	12.10	13.70	12.80	12.80	0.00	0.00	-0.90	-6.57
<b>South Asia</b>																
India	6.60	6.45	6.60	6.60	1.02	0.99	1.06	1.06	6.70	6.40	7.00	7.00	0.00	0.00	0.60	9.38
Pakistan	0.27	0.27	0.27	0.27	0.83	0.85	0.85	0.85	0.23	0.23	0.23	0.23	0.00	0.00	0.00	0.00
Bangladesh	0.30	0.30	0.30	0.30	0.73	0.75	0.75	0.75	0.22	0.23	0.23	0.23	0.00	0.00	0.00	0.00
<b>Canada</b>	6.49	6.11	5.75	5.75	1.95	1.94	1.77	1.77	12.64	11.83	10.20	10.20	0.00	0.00	-1.63	-13.74
<b>Australia</b>	1.69	1.39	1.60	1.65	1.09	1.37	1.31	1.36	1.84	1.91	2.10	2.25	0.15	7.14	0.34	17.80
<b>Former Soviet Union - 12</b>																
Ukraine	1.40	1.00	1.00	1.00	2.07	1.90	2.00	1.60	2.90	1.90	2.00	1.60	-0.40	-20.00	-0.30	-15.79
Russia	0.63	0.56	0.63	0.63	1.20	1.20	1.21	1.11	0.75	0.67	0.76	0.70	-0.06	-7.89	0.03	4.95
Belarus	0.29	0.34	0.30	0.27	2.03	1.91	2.00	1.48	0.59	0.65	0.60	0.40	-0.20	-33.33	-0.25	-38.46
<b>Paraguay</b>	0.03	0.07	0.08	0.08	1.20	1.20	1.11	1.11	0.04	0.08	0.08	0.08	0.00	0.00	0.00	-1.19
<b>Others</b>	0.21	0.23	0.36	0.36	0.85	0.95	0.69	0.54	0.18	0.22	0.24	0.19	-0.05	-20.49	-0.03	-11.42

World and Selected Countries and Regions

**Table 16 Copra, Palm Kernel, and Palm Oil Production**

Country / Region	Production (Million metric tons)				Change in Production			
	2008/09	Prel.	2010/11 Proj.		From last month		From last year	
		2009/10	Jul	Aug	MMT	Percent	MMT	Percent
<b>Oilseed, Copra</b>								
Philippines	2.52	2.52	2.60	2.60	0.00	0.00	0.08	0.03
Indonesia	1.60	1.60	1.60	1.60	0.00	0.00	0.00	0.00
India	0.74	0.74	0.74	0.74	0.00	0.00	0.00	0.00
Vietnam	0.24	0.24	0.24	0.24	0.00	0.00	0.00	0.00
Mexico	0.23	0.23	0.23	0.23	0.00	0.00	0.00	0.00
Papua New Guinea	0.13	0.13	0.13	0.13	0.00	0.00	0.00	0.00
Thailand	0.07	0.07	0.07	0.07	0.00	0.00	0.00	0.00
Sri Lanka	0.07	0.07	0.07	0.07	0.00	0.00	0.00	0.00
Mozambique	0.05	0.05	0.05	0.05	0.00	0.00	0.00	0.00
Cote d'Ivoire	0.05	0.05	0.05	0.05	0.00	0.00	0.00	0.00
World	5.88	5.88	5.96	5.96	0.00	0.00	0.08	0.01
<b>Oilseed, Palm Kernel</b>								
Indonesia	5.47	5.75	6.50	6.50	0.00	0.00	0.75	0.13
Malaysia	4.44	4.65	4.83	4.83	0.00	0.00	0.17	0.04
Nigeria	0.67	0.67	0.67	0.67	0.00	0.00	0.00	0.00
Thailand	0.31	0.27	0.28	0.28	0.00	0.00	0.01	0.04
Colombia	0.20	0.20	0.20	0.20	0.00	0.00	0.00	0.00
Ecuador	0.11	0.12	0.12	0.12	0.00	0.00	0.00	0.00
Papua New Guinea	0.11	0.12	0.12	0.12	0.00	0.00	0.00	0.00
Cote d'Ivoire	0.08	0.08	0.08	0.08	0.00	0.00	0.00	0.00
Cameroon	0.07	0.07	0.07	0.07	0.00	0.00	0.00	0.00
Congo (Kinshasa)	0.06	0.06	0.06	0.06	0.00	0.00	0.00	0.00
World	11.88	12.36	13.29	13.29	0.00	0.00	0.93	0.08
<b>Oil, Palm</b>								
Indonesia	20.50	21.50	24.50	24.50	0.00	0.00	3.00	0.14
Malaysia	17.26	18.00	18.60	18.60	0.00	0.00	0.60	0.03
Thailand	1.54	1.35	1.50	1.50	0.00	0.00	0.16	0.12
Nigeria	0.85	0.85	0.85	0.85	0.00	0.00	0.00	0.00
Colombia	0.76	0.78	0.81	0.81	0.00	0.00	0.03	0.04
Ecuador	0.43	0.47	0.47	0.47	0.00	0.00	0.00	0.00
Papua New Guinea	0.40	0.44	0.44	0.44	0.00	0.00	0.00	0.00
Cote d'Ivoire	0.29	0.30	0.30	0.30	0.00	0.00	0.00	0.00
Honduras	0.25	0.25	0.25	0.25	0.00	0.00	0.00	0.00
Costa Rica	0.21	0.23	0.23	0.23	0.00	0.00	0.00	0.00
World	43.85	45.55	49.34	49.34	0.00	0.00	3.79	0.08

World and Selected Countries and Regions

**Table 17 Cotton Area, Yield, and Production**

Country / Region	Area (Million 1000 HA)				Yield (Kilograms per hectare)				Production (Million 480 lb. bales)				Change in Production			
	2008/09	Prel.	2010/11 Proj.		2008/09	Prel.	2010/11 Proj.		2008/09	Prel.	2010/11 Proj.		From last month		From last year	
		2009/10	Jul	Aug		2009/10	Jul	Aug		2009/10	Jul	Aug	MBales	Percent	MBales	Percent
<b>World</b>	61.46	30.32	32.65	33.01	1,520	734	774	771	107.16	102.15	116.02	116.85	0.83	0.72	14.70	14.39
<b>United States</b>	3.06	3.05	4.21	4.30	911	871	947	938	12.82	12.19	18.30	18.53	0.23	1.28	6.35	52.07
<b>Total Foreign</b>	89.13	27.27	28.45	28.71	230	718	748	746	94.34	89.96	97.72	98.32	0.60	0.61	8.36	9.29
<b>China</b>	6.05	5.30	5.40	5.40	1,321	1,335	1,331	1,331	36.70	32.50	33.00	33.00	0.00	0.00	0.50	1.54
<b>South Asia</b>																
India	9.41	10.26	10.30	10.70	523	499	528	529	22.60	23.50	25.00	26.00	1.00	4.00	2.50	10.64
Pakistan	2.90	3.00	3.20	3.05	653	697	694	678	8.70	9.60	10.20	9.50	-0.70	-6.86	-0.10	-1.04
<b>Former Soviet Union - 12</b>																
Uzbekistan	1.42	1.30	1.30	1.30	705	670	804	804	4.60	4.00	4.80	4.80	0.00	0.00	0.80	20.00
Turkmenistan	0.60	0.55	0.58	0.58	490	495	492	492	1.35	1.25	1.30	1.30	0.00	0.00	0.05	4.00
Tajikistan	0.23	0.17	0.17	0.17	454	480	495	495	0.48	0.38	0.38	0.38	0.00	0.00	0.00	0.00
Kazakhstan	0.16	0.12	0.13	0.13	592	680	586	586	0.44	0.38	0.35	0.35	0.00	0.00	-0.03	-6.67
<b>Sub-Saharan Africa</b>																
Burkina	0.44	0.42	0.48	0.48	421	363	413	413	0.85	0.70	0.90	0.90	0.00	0.00	0.20	28.57
Mali	0.19	0.20	0.25	0.25	401	463	414	414	0.35	0.43	0.48	0.48	0.00	0.00	0.05	11.76
Zimbabwe	0.37	0.38	0.40	0.40	244	269	286	286	0.42	0.47	0.53	0.53	0.00	0.00	0.06	11.70
Benin	0.21	0.18	0.20	0.20	430	423	463	463	0.41	0.35	0.43	0.43	0.00	0.00	0.08	21.43
Cote d'Ivoire	0.19	0.15	0.20	0.20	258	363	381	381	0.23	0.25	0.35	0.35	0.00	0.00	0.10	40.00
Cameroon	0.16	0.15	0.16	0.16	340	327	374	374	0.25	0.23	0.28	0.28	0.00	0.00	0.05	22.22
Nigeria	0.40	0.40	0.41	0.41	234	248	252	252	0.43	0.45	0.48	0.48	0.00	0.00	0.03	5.56
Sudan	0.09	0.04	0.12	0.12	460	354	363	363	0.19	0.07	0.20	0.20	0.00	0.00	0.14	207.69
<b>South America</b>																
Brazil	0.84	0.84	1.00	1.00	1,415	1,393	1,524	1,524	5.48	5.35	7.00	7.00	0.00	0.00	1.65	30.84
Argentina	0.30	0.43	0.45	0.45	435	420	435	435	0.60	0.83	0.90	0.90	0.00	0.00	0.07	8.43
Paraguay	0.05	0.02	0.05	0.05	331	381	340	340	0.08	0.04	0.08	0.08	0.00	0.00	0.04	122.86
<b>Middle East</b>																
Turkey	0.34	0.28	0.35	0.35	1,236	1,361	1,325	1,452	1.93	1.75	2.10	2.30	0.20	9.52	0.55	31.43
Syria	0.18	0.17	0.17	0.17	1,330	1,320	1,320	1,320	1.08	1.00	1.00	1.00	0.00	0.00	0.00	0.00
Iran	0.10	0.09	0.10	0.10	708	726	762	762	0.33	0.30	0.35	0.35	0.00	0.00	0.05	16.67
<b>Australia</b>	0.16	0.20	0.25	0.26	1,991	1,742	1,916	1,926	1.50	1.60	2.20	2.30	0.10	4.55	0.70	43.75
<b>EU-27</b>	0.31	0.29	0.33	0.33	882	758	903	903	1.24	1.02	1.39	1.39	0.00	0.00	0.37	35.78
Greece	0.25	0.24	0.27	0.27	1,002	834	968	968	1.15	0.90	1.20	1.20	0.00	0.00	0.30	33.33
Spain	0.05	0.06	0.06	0.06	325	428	615	615	0.08	0.11	0.18	0.18	0.00	0.00	0.07	59.09
<b>Egypt</b>	0.13	0.12	0.16	0.16	791	790	816	816	0.48	0.43	0.60	0.60	0.00	0.00	0.17	38.89
<b>Mexico</b>	0.10	0.07	0.11	0.11	1,222	1,313	1,244	1,244	0.57	0.42	0.64	0.64	0.00	0.00	0.22	51.66
<b>Others</b>	63.81	2.15	2.19	2.19	11	272	279	279	3.09	2.69	2.81	2.81	0.00	0.00	0.13	4.69

World and Selected Countries and Regions

**TABLE 18**

The table below presents a 29-year record of the differences between the August projection and the final estimate. Using world wheat production as an example, changes between the August projection and the final estimate have averaged 11.2 million tons (2.0 percent) and ranged from -32.1 to 19.5 million tons. The August projection has been below the final 18 times and above the final 11 times.

**RELIABILITY OF PRODUCTION PROJECTIONS**

COMMODITY AND REGION	PROJECTION AND FINAL ESTIMATES, 1981/82 - 2008/09 1/					
	Difference		Lowest	Highest	Below	Above
	Average	Average	Difference		Final	Final
	Percent	---Million metric tons---			Number of years 2/	
<b>WHEAT</b>						
World	2.0	11.2	-32.1	19.5	18	11
U.S.	1.9	1.2	-3.4	4.2	12	17
Foreign	2.2	10.8	-31.1	17.8	18	11
<b>COARSE GRAINS 3/</b>						
World	2.0	17.3	-51.0	32.7	22	7
U.S.	4.5	10.3	-22.1	31.4	20	9
Foreign	2.0	12.4	-28.8	20.0	19	10
<b>RICE (Milled)</b>						
World	1.9	6.8	-24.4	4.1	20	9
U.S.	4.4	0.2	-0.6	0.5	17	12
Foreign	1.9	6.8	-24.7	4.2	21	8
<b>SOYBEANS</b>						
World	3.8	6.2	-18.3	26.7	17	12
U.S.	5.3	3.5	-7.4	11.1	15	14
Foreign	6.9	6.1	-13.3	26.4	15	14
	---Million 480-lb. bales---					
<b>COTTON</b>						
World	3.6	3.3	-13.2	10.5	16	13
U.S.	6.6	1.1	-3.1	3.9	17	11
Foreign	3.8	2.8	-10.7	10.2	15	13
<b>UNITED STATES</b>	-----Million bushels-----					
<b>CORN</b>	4.9	382	-889	1079	19	10
<b>SORGHUM</b>	6.5	38	-82	108	16	13
<b>BARLEY</b>	5.0	18	-63	67	11	18
<b>OATS</b>	7.5	16	-26	57	6	23

1/ The final estimate for 1981/82-2008/09 is defined as the first November estimate following the marketing year.

2/ May not total 28 if projection was the same as the final.

3/ Includes corn, sorghum, barley, oats, rye, millet, and mixed grain.