

SF 4 at a Glance

- Key demographic and housing data from Census 2000
- Tables repeated for 335 race, Hispanic, and ancestry groups
- Detailed occupation and industry data from Census 2000
- Complete U.S. coverage, plus Puerto Rico
- Census tract geography allows small-area analysis
- All 323 detailed tables on the Web and on CD-ROM/DVD
- Shortcuts to the data in American FactFinder
- Powerful, easy-to-use software on CD-ROM/DVD

Census 2000: Summary File 4

Diverse America and Much More

With Census 2000, users have a special opportunity to study the heritage of America's population. Summary File (SF) 4 gives users access to extensive detail on the socioeconomic and housing characteristics of the nation's race, Hispanic, ancestry, and tribal groups. In the past, this file has been large, complex, and expensive. The Census 2000 version is still large, but advances in software, online access, and compression technology have made this file accessible to many new users who did not have access in the past.

All summary files are useful in studying the demographic makeup of the population, but SF 4 is the most detailed Census 2000 file and the only file to offer so many different kinds of data for the broad array of groups in our population.

Data in SF 4 Are Based on the Census 2000 Sample Questions

The SF 4 data are drawn from responses to questions asked on the Census 2000 long form (the sample questionnaire). Although the sampling rate varied according to the population density of particular areas, generally the long form went to one in six households; in processing and tabulating the data, the Census Bureau adds weights, so that the data reflect trends in the entire population.

How many of the Hispanic homeowners in your community are Mexican? What is their median family income? What percentage of their income goes for housing? Are their occupations different from those of the Cuban or Puerto Rican population in your area? What are the demographics of the Irish population in the United States? Naturalized citizens? And what are the

Figure 1.
Census 2000 Gateway

U.S. Census Bureau ▶ Census 2000 Gateway | [Glossary](#)

Your Gateway to Census 2000

Thank you, America, for your participation in Census 2000.
The population of the U.S. on April 1, 2000 was **281,421,906** [\[PDF 2M\]](#).

Information Links

- News Media** - News releases, web casts, tip sheets, videos, photos, and embargo access
- Introduction to Census 2000 Data** - Overviews of Census 2000 and PowerPoint slides to download
- Release Schedules by:**
 - Product
 - Geography
 - Subject
- Census Store** - Order products on-line
- Evaluations** - Results from the Census 2000 Testing, Experimentation, and Evaluation Program
- Special Tabulations** - Program for obtaining custom
- Count Question Program** for challenge counts
- Notes and Errata** - Includes geographic corrections

Access Data by Geography

American FactFinder

Tables and maps of Census 2000 data for all geographies to the block level [Go](#)

State & County QuickFacts

Summaries of the most requested data for states and counties [Go](#)

Enter a **street address** to find Census 2000 data

Data Highlights - Data highlights, documentation, and FTP access for the U.S., states, counties, places (cities & towns) and more, including Puerto Rico and [Island Areas](#)

Select a state: [Go](#)

Your "gateway" to Census 2000 is <http://www.census.gov/main/www/cen2000.html>. The gateway page on the Census Bureau's Web site gives you one-stop access to Census 2000 data files (such as Summary File 4) and information about the way we conducted the census, the data release schedule, the various data products, and all you need to understand and use data from the census.

characteristics of various groups living on American Indian reservations? SF 4 provides answers to questions about these and many other groups.

SF 4 is the last in a series of summary files (SF 1, SF 2, and SF 3 preceded it). SF 1 has 286 tables based on the short form questions asked in the census, with data for areas as small as census blocks. SF 2 has a subset of the tables found in SF 1, with tables repeated for up to 249 race and Hispanic groups, provided they meet a population threshold. SF 3 provides data from the sample or long form questions. It is notable because it has over 800 tables, with detail down to the level of block groups.

SF 4 is similar to SF 2. It lets you show characteristics for up to 335 race, Hispanic or Latino, and ancestry groups, provided they meet certain population thresholds.

Special Feature: Abundant Data on Race, Hispanic, and Ancestry Groups in SF 4

SF 4 contains 323 detailed tables—213 population tables and 110 housing tables. Figure 2 lists the subjects. There are two kinds of tables: population (PCT) tables, with data on education, income, employment, commuting, citizenship status, family and household characteristics, and other topics; and housing (HCT) tables, with data on the physical and financial characteristics of occupied housing units, along with information on the householder.

In Census 2000, Americans were, for the first time, allowed to select more than one race. In addition, the census included a question on Hispanic or Latino origin, with a provision that respondents identify their specific origin (e.g., Cuban). Finally, the long form included a question on ancestry. These three questions, along with the question on place of birth, give users a full view of America's diverse heritage.

Figure 2.
Summary File 4 Data Topics

Population Subjects	Housing Subjects
Age	Bedrooms
Class of Worker	Contract Rent
Disability	Gross Rent
Educational Attainment	Gross Rent as a Percentage of Household Income in 1999
Employment Status	House Heating Fuel
Grandparents as Caregivers	Housing Units
Households and Families	Kitchen Facilities
Income in 1999 (Family and Nonfamily)	Meals Included in Rent
Income in 1999 (Household)	Mortgage Status
Income in 1999 (Individuals)	Occupants Per Room
Industry	Occupancy Status
Journey to Work (Commuting)	Plumbing Facilities
Language and Ability to Speak English	Price Asked
Marital Status	Rent Asked
Migration	Rooms
Occupation	Selected Monthly Owner Costs
Place of Birth, Citizenship Status, and Year of Entry	Selected Monthly Owner Costs as a Percentage of Household Income in 1999
Place of Work	Telephone Service Available
Poverty Status in 1999 (Family)	Tenure
Poverty Status in 1999 (Household)	Units in Structure
Poverty Status in 1999 (Individuals)	Urban and Rural
Sex	Value of Home
School Enrollment	Vehicle Availability
Urban and Rural	Year Householder Moved Into Unit
Veteran Status	Year Structure Built

SF 4 allows users to study the demographic mix for small areas. For any given area down to the level of census tract, tables may be repeated for 335 race, ethnic, and ancestry groups including—

- 132 race groups, including iterations for multirace groups.
- 38 specific Asian groups (included in 132 race groups).
- 20 specific Native Hawaiian and other Pacific Islander groups (included in 132 race groups).
- 78 specific American Indian and Alaska Native tribe categories (reflecting 39 tribes).
- 25 Hispanic groups and 14 “Not Hispanic or Latino” groups.
- 86 ancestry groups.

Working With Population Thresholds in Summary File 4

Tables in SF 4 can be shown for a particular population subgroup if the group meets two thresholds:

1. SF 4 repeats a table for a *race* or a *Hispanic or Latino origin* group (such as Salvadoran) if the group has 100 or more persons in the geographic area of interest.
2. SF 4 repeats a table for a *race, Hispanic or Latino, or ancestry* group (such as Arab or Irish) if the group has 50 unweighted cases in the sample. The final table always displays weighted numbers, so in a specific area there must be 50 people times the appropriate weight.

If, for example, a county has 100 or more “Vietnamese alone,” and the census sample had 50 or more sample unweighted cases of “Vietnamese alone” in the county, then all the SF 4 tables for that area are shown for “Vietnamese alone.”

Appendix 1 in this profile lists the groups for which tables may be repeated in SF 4. A reference like “Vietnamese alone” identifies people who selected one race on their census questionnaire. The reference “Vietnamese alone or in any combination” identifies all those who selected “Vietnamese” as their race—both those who selected just one race and those who selected this race, plus one or more other races.

You should note that you can get simple population totals for these groups in other files—most notably SF 1 for race and Hispanic subgroups and SF 3 for ancestry groups. Although SF 4, for example, will not let you display the *characteristics* of Asian Indians in the tracts of Lancaster County, in SF 1, you can nonetheless find the *total number* of Asian Indians living in the tracts, but nothing more.

This applies to ancestry too. SF 3 has several tables listing the totals for 110 ancestries, with data down to the level of census tracts. In the case that a particular group does not meet the SF 4 threshold, you can still get a count of the ancestry group in SF 3.

Other Highlights in SF 4

Summary File 4 is very similar in design to Summary File 2: its purpose is to allow users to display tables already published in a previous file for smaller population groups. Many of the SF 4 tables appear in SF 3; in SF 4, you can display these tables for any of the 335 groups that meet the criteria.

All the housing (HCT) tables found in SF 4 were released in SF 3. Most of the population (PCT) tables in SF 4 are in SF 3. There are, however, other tables in SF 4 that users cannot get in SF 3. Appendix 2 lists the tables unique to SF 4.

One particular bonus: SF 4 has detailed data on 102 industries (PCT85) and 125 occupations (PCT86); SF 3 has less detailed data for industry and occupation. If you need to know the number of electricians in Maine, you cannot find the answer in SF 3, you must go to SF 4.

Geography in SF 4

Like all summary files, Summary File 4 is packed with data for many geographic areas. It serves users interested in the macro view (for example, the United States as a whole or entire states) and the micro view (census tracts), as well as all areas in between.

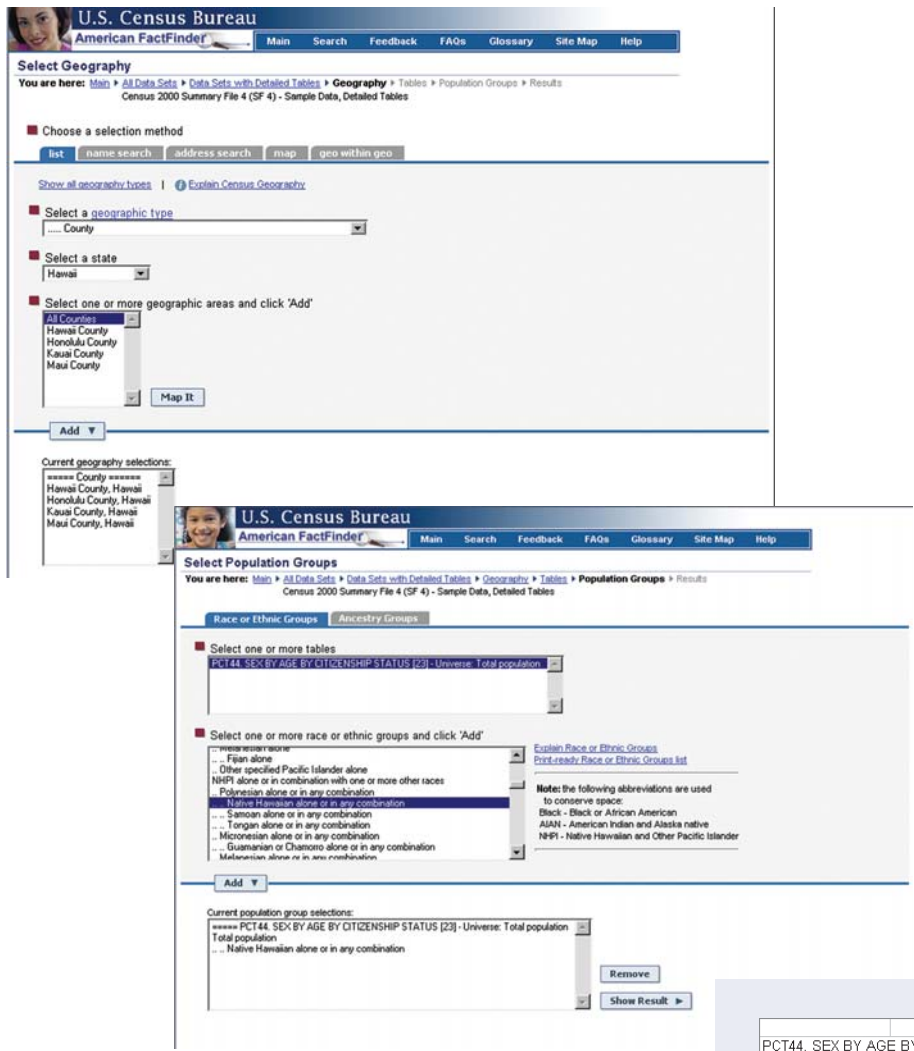
SF 4 gives you a summary of geographic areas (all census tracts in a county) or parts of areas (for example, part of an Indian reservation within a state).

Reference Sources

If you are making extensive use of the race, Hispanic or Latino, ancestry, and tribal data, be sure to consult the discussion of “Race,” “Hispanic or Latino,” and “Ancestry” in Appendix B (“Definitions of Subject Characteristics”) of the SF 4 technical documentation online at <http://www.census.gov/prod/cen2000/doc/sf4.pdf>.

Race and Hispanic definitions used by the Census Bureau conform to the standards published in the October 30, 1997 *Federal Register* notice entitled “Revisions to the Standards for the Classification of Federal Data on Race and Ethnicity” online at <http://www.census.gov/population/www/socdemo/race/Ombdir15.html> issued by the Office of Management and Budget. These standards govern the categories used to collect and present federal data on race and ethnicity. More background, FAQs, and historical data can be found on the Census Bureau Web site <http://www.census.gov/population/www/socdemo/race.html>.

Figure 3. American FactFinder® Lets You Select Detailed Data From Summary File 4 for Race, Ethnic, and Ancestry Groups



First, go into FactFinder, select “Data Sets,” Summary File 4, and then “Detailed Tables.”

FactFinder leads you through the selection of one or more geographic areas – all the way down to the census tract. Then it prompts you to select one or more detailed tables from SF 4.

Here we selected counties in Hawaii as our geography and chose Table PCT44, Sex by Age by Citizenship Status. Once you select the geography and the table, FactFinder prompts you with a list of groups to select. You are then able to select from 249 race, ethnic, and tribal groups, and 86 ancestry groups. FactFinder will display Table PCT44 for that group.

At the right, we show Table PCT44. Sex by Age by Citizenship Status, from SF 4, for people in Hawaiian counties who identified themselves as “Native Hawaiian alone or in any combination.” SF 4 shows a table for a group only if the group numbers 100 or more people and has 50 or more unweighted cases of this group in the sample for that area. All four counties in Hawaii meet the thresholds for this group, so Table PCT44 (and all tables in SF 4) can be shown for this group. Had we chosen “Asian Indian alone or in any combination,” the results would have been much different: only two counties meet the threshold for this group and consequently SF 4 tables for this group can be repeated only in these two counties.

PCT44. SEX BY AGE BY CITIZENSHIP STATUS [23] - Universe: Total population				
Racial or Ethnic Grouping: Native Hawaiian alone or in any combination				
Data Set: Census 2000 Summary File 4 (SF 4) - Sample Data				
NOTE: Data based on a sample. For information on confidentiality protection, sampling error, nonsampling error, and definitions see http://factfinder.census.gov/home/en/datanotes/expsf4.htm .				
	Hawaii County,	Honolulu County,	Kauai County,	Maui County, Hawaii
Total:	43,290	154,802	13,278	30,054
Male:	21,804	77,587	6,807	14,782
Under 18 years:	9,335	29,975	2,968	6,049
Native:	9,302	29,951	2,968	6,039
Foreign born:	33	24	0	10
Naturalized citizen:	32	16	0	2
Not a citizen:	1	8	0	8
18 years and over:	12,469	47,612	3,839	8,733
Native:	12,385	47,229	3,830	8,634
Foreign born:	84	383	9	99
Naturalized citizen:	27	342	9	55
Not a citizen:	57	41	0	44
Female:	21,486	77,215	6,471	15,272
Under 18 years:	8,394	27,675	2,651	6,115
Native:	8,380	27,637	2,651	6,106
Foreign born:	14	38	0	9
Naturalized citizen:	14	10	0	7
Not a citizen:	0	28	0	2
18 years and over:	13,092	49,540	3,820	9,157
Native:	12,964	49,028	3,804	9,058
Foreign born:	128	512	16	99
Naturalized citizen:	77	406	14	72
Not a citizen:	51	106	2	27
U.S. Census Bureau Census 2000				

When to Use SF 2, When to Use SF 4

The long form was sent to a sample of the population, and the answers of these respondents have been given weights to produce estimates for the total population. Particularly in small places (for example, small cities), census tracts, and block groups, users may observe differences in the population and housing totals shown in SFs 1 and 2 and SFs 3 and 4.

Based on the short form, the SF 1 and SF 2 tables provide the official census count of the number of people in an area. Based on the long form, the SF 3 and SF 4 tables provide estimates of the characteristics of the total population.

When dealing with items collected on the short form (for example, total population, the number of people reporting their race or Hispanic origin, the number of housing units, or the number of owners and renters), users should always view the SF 1 and SF 2 numbers as the official count. For more information, see Data Note 2 in the SF 4 technical documentation.

By far the easiest way to access the data is through the American FactFinder®. The Census Bureau has also released these files on CD-ROM and DVD and people working with data on disc will find the geographic arrangement discussed below.

State files. Summary File 4 was released on CD-ROM as a series of state files, with files for the District of Columbia and Puerto Rico. The table designs are standard for each kind of geographic area. These files have all substate geographic areas down to the level of census tracts.

Additional releases included all the state files on five DVDs; the DVD product called the U.S. Summary provided the data for all substate areas. Both the CD-ROMs and the DVDs come with software for accessing and downloading the data. (ASCII versions of the files are available online and on DVD.)

National file. The National File on four DVDs provides summaries for higher levels of geography (places and above) and covers the entire country. This file is designed for users who need to produce national or regional summaries of an area (e.g., all metro areas in the country), but do not need the data for really small areas such as census tracts. Users will find it easier to generate these figures using the National File rather than the individual state files on CD-ROM or the U.S. Summary file on DVD.

The National File also has totals for multistate areas like metro areas or American Indian reservations. If you were using the U.S. Summary DVD (see above), you could select the components of these areas (e.g., all states in the East region), download them as a single file, and then easily compute a total. Nonetheless, the easiest way to generate data for these areas is through the National File.

Internet Access Through American FactFinder®

Visit the Census Bureau's award-winning homepage <http://www.census.gov> and click on the American FactFinder® (AFF) for access to as much or as little data as you need from SF 4. AFF gives several easy-to-use options for using SF 4:

- *Detailed Tables* gives you direct access to all the SF 4 tables. As Figure 3 shows, you must go to the "Change Selections" option in the blue bar to select the SF 4 race or ethnic group (for example, Cubans) or ancestry group (for example, Arabs) for which you wish to repeat a table. Once you click on "Race or Ethnic Groups" or "Ancestry Groups," AFF allows you to pick the group.
- *Quick Tables* gives you a set of key variables for areas as small as census tracts. In most cases, you can repeat tables for the 335 groups that meet the population thresholds.
- *Geographic Comparison Tables* (GCT) lets you see how your state, city, county, metro area, or census tract stacks up in comparison to others according to key variables.

Geographic Areas Shown in Census 2000 Summary File 4

- United States
- Census Regions
- Census Divisions
- States
- District of Columbia
- Puerto Rico
- Counties
- Metropolitan Areas
- Urban Areas
- County Subdivisions
- Places
- Consolidated Cities
- American Indian Areas
- Alaska Native Areas
- Hawaiian Home Lands
- Census Tracts

Using GCTs, you *cannot* repeat tables for the 335 groups, only for the 9 major race groups: White alone; Black or African American alone; American Indian or Alaska Native alone; Asian alone; Native Hawaiian and other Pacific Islander alone; Some Other Race alone; Two or More Races; Hispanic or Latino; and White alone, not Hispanic or Latino.

- *Custom Tables* lets you select and display simple tabulations from more complicated tables or to mingle tabulations from several tables in one table. It also lets you create a table from several source tables and display the same table for any of the 335 groups that meet the criteria.

AFF also gives you access to the technical documentation and other reference information to assist you in using the file. Be sure to look at the Summary File 4 overview page <http://www.census.gov/Press-Release/www/2003/SF4.html> for links to the documentation, the File Transfer Protocol (FTP) site, and other useful pages. Especially valuable on this page is a search tool that lets you access Census 2000 and related data for each state.

Download Data From American FactFinder® — via File Transfer Protocol (FTP)

Every AFF data page has a “Download” tab through which you can download files as .csv, tab-delimited, or rich text format files either directly or indirectly into a spreadsheet program like Excel or Lotus or a database program like Access or dBASE.

In addition, ASCII files in a zipped format are available free on the Internet via File Transfer Protocol (FTP). Note that these files do not come with viewing software. Given the size of the files, the speed of your modem and Internet connection, downloading a file may be a time-consuming process. If you plan on downloading or using the ASCII files, be sure to consult the “Read

Me” file on the Internet http://www2.census.gov/census_2000/datasets/Summary_File_4/OREADME_SF4.txt.

Unfortunately, technical support for the ASCII files is unavailable. However, there is a helpful set of instructions for downloading the ASCII files into a data base application at <http://www.census.gov/support/SF4ASCII.html>.

Buy SF 4 on CD-ROM or DVD

If you plan to make heavy use of SF 4 or to analyze data for more than a few variables, you may want to consider purchasing the SF 4 data on CD-ROM or DVD. You may purchase discs from the Census Bureau's Customer Services Center at 301-763-INFO (4636).

The files on disc come with proprietary software that operate on computers with Microsoft Windows 95/98/2000/NT/ME/XP. The software provides an expandable hierarchical menu or equivalent for the selection of one or more geographic areas. The user software supports selection of individual data items, complete data tables, and geographic identifiers to include in output files. Figure 4 shows how to download and display SF 4 data from a disc.

As the order form shows on page 12, there are three kinds of discs, with access and retrieval software:

- State files on CD-ROM or in a few cases (e.g., Florida) on DVD.
- U.S. Summary Files on DVD. This product has all the state files on disc. This would be the best buy for someone needing tract data for the entire country.
- National File on DVD. This product has data for the larger areas in the country (places and larger areas). This is the best option for someone who does not need data at the census tract level or

someone needing substantial data for “macro” areas in the country (e.g., regions and divisions).

Census 2000 Maps

Particularly if you are planning to use data for census tracts, you'll need Census 2000 maps, available electronically on the Internet (in pdf) and on paper:

Block maps. These are detailed maps (36" x 33") showing all levels of geography down to the level of census blocks. They can be purchased from the Customer Services Center in map sets for counties, cities, minor civil divisions, and other areas. These detailed street maps show the boundaries of blocks and tracts and all larger geographic areas. To view these maps online, go to http://www.census.gov/geo/www/maps/CP_MapProducts.htm.

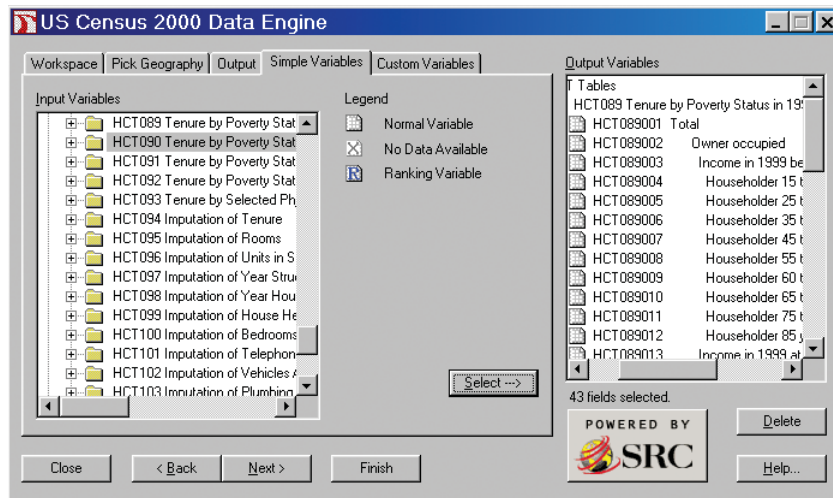
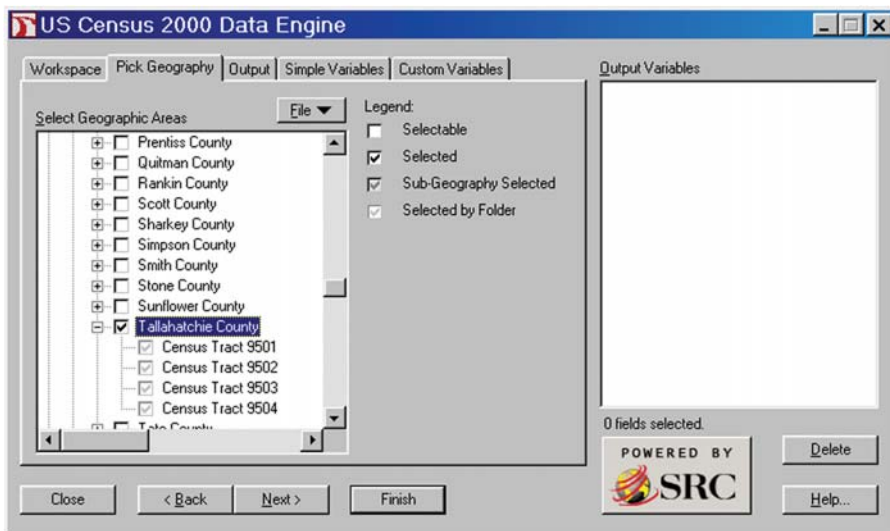
Census tract outline maps. Far less detailed than the block maps, the outline maps (36" x 33") show the boundaries of census tracts, ideal for most users. Streets are shown where they coincide with tract or political boundaries. They are available for sale by county from the Customer Services Center. To view these maps online, go to http://www.census.gov/geo/www/maps/CP_MapProducts.htm.

Call to Order Discs and Maps!

To order discs, you can use the order form in this profile or contact the Customer Services Center at 301-763-INFO (4636). For maps, contact the Customer Services Center.

Need to keep up to date on other Census 2000 files? You can subscribe to the *Census Product Update*, a biweekly e-mail and online newsletter, available free from the Census Bureau. Come to <http://www.census.gov/mp/www/cpu.html> to sign up or to view the newsletter online.

Figure 4.
Powerful Software on SF 4 CD-ROMs and DVDs Lets You Control
Retrieval and Output



Tallahatchie County, Mississippi, is a small rural county (pop: 14,903) in the northwestern part of the state, where almost 60 percent of the population is Black or African American.

Suppose you would like to profile this population, a perfect use of SF 4. In using the SF 4 CD-ROM, first you would install the software and select the files for the “Black alone” and the “Black alone or in combination with other races.”

Next, you would pick the geography you want—in this case, all four tracts in the county—and then the software prompts you to pick a table—in this case, Table HCT089, Tenure by Poverty Status in 1999 by Age of Householder.

Screen 1 shows the selection of geography on the CD-ROM version of SF 4 for the county; screen 2, the selection of the data variables. You then can save the tabulation, and then open it up in a spreadsheet or database application.

Note: All the data for a specific group are together on one of the discs in the National File or the U.S. Summary. You must select a group from the appropriate disc before displaying a table for that group.

For More Information

- Visit the Census Bureau’s Internet site at <http://www.census.gov> or call our Customer Services Center at 301-763-INFO (4636).
- Visit your local library. Many major university and public libraries participate in the Federal Depository Library Program and receive copies of Census Bureau reports. For a complete list, visit <http://www.gpo.gov/libraries>.
- Call or visit one of 1,800 state and local planning groups, libraries, chambers of commerce, and others that participate in a Census Bureau data center program. For a complete list of data centers, visit <http://www.census.gov/dmd/www/groupcncr.html>.
- Call or visit a Census Bureau Regional Office. A complete listing can be found at <http://www.census.gov/field/www/>.

Appendix 1. Race, Ethnic, and Ancestry Groups in Summary File 4

Race Groups

White alone

White alone or in combination with one or more other races

Black or African American alone

Black or African American alone or in combination with one or more other races

American Indian and Alaska Native (AIAN) alone

American Indian alone
Alaska Native alone

American Indian and Alaska Native (AIAN) alone or in combination with one or more other races

American Indian alone or in any combination

Alaska Native alone or in any combination

Asian alone

Asian Indian alone

Bangladeshi alone

Cambodian alone

Chinese alone

Chinese, except Taiwanese, alone

Taiwanese alone

Filipino alone

Hmong alone

Indonesian alone

Japanese alone

Korean alone

Laotian alone

Malaysian alone

Pakistani alone

Sri Lankan alone

Thai alone

Vietnamese alone

Other specified Asian alone

Asian alone or in combination with one or more other races

Asian Indian alone or in any combination

Bangladeshi alone or in any combination

Cambodian alone or in any combination

Chinese alone or in any combination

Chinese, except Taiwanese, alone or in any combination

Taiwanese alone or in any combination

Filipino alone or in any combination

Hmong alone or in any combination

Indonesian alone or in any combination

Japanese alone or in any combination

Korean alone or in any combination

Laotian alone or in any combination

Malaysian alone or in any combination

Pakistani alone or in any combination

Sri Lankan alone or in any combination

Thai alone or in any combination

Vietnamese alone or in any combination

Other specified Asian alone or in any combination

Native Hawaiian and Other Pacific Islander (NHPI) alone

Polynesian alone

Native Hawaiian alone

Samoan alone

Tongan alone

Micronesian alone

Guamanian or Chamorro alone

Melanesian alone

Fijian alone

Other specified Pacific Islander alone

Native Hawaiian and Other Pacific Islander (NHPI) alone or in combination with one or more other races

Polynesian alone or in any combination

Native Hawaiian alone or in any combination

Samoan alone or in any combination

Tongan alone or in any combination

Micronesian alone or in any combination

Guamanian or Chamorro alone or in any combination

Melanesian alone or in any combination

Fijian alone or in any combination

Other specified Pacific Islander alone or in any combination

Other specified Pacific Islander alone or in any combination

Other specified Pacific Islander alone or in any combination

Some other race alone

Some other race alone or in combination with one or more other races

Some other race alone or in combination with one or more other races

Two or More Races

Two or more races including Some other race

Two or more races including Some other race

Two or more races excluding Some other race, and three or more races

Two or more races excluding Some other race

Two or more races excluding Some other race

Three or more races

Three or more races

Two Races

White; Black or African American

White; Black or African American

White; American Indian and Alaska Native (AIAN)

White; American Indian and Alaska Native (AIAN)

White; Asian

White; Asian

White; Native Hawaiian and Other Pacific Islander (NHPI)

White; Native Hawaiian and Other Pacific Islander (NHPI)

White; Some other race

White; Some other race

Black or African American; American Indian and Alaska Native (AIAN)

Black or African American; American Indian and Alaska Native (AIAN)

Black or African American; Asian

Black or African American; Asian

Black or African American; Native Hawaiian and Other Pacific Islander (NHPI)

Black or African American; Native Hawaiian and Other Pacific Islander (NHPI)

Black or African American; Some other race

Black or African American; Some other race

Black or African American; Some other race

American Indian and Alaska Native (AIAN); Asian

American Indian and Alaska Native (AIAN); Asian

American Indian and Alaska Native (AIAN); Native Hawaiian and Other Pacific Islander (NHPI)

American Indian and Alaska Native (AIAN); Some other race

Asian; Native Hawaiian and Other Pacific Islander (NHPI)

Asian; Some other race

Native Hawaiian and Other Pacific Islander (NHPI); Some other race

Native Hawaiian and Other Pacific Islander (NHPI); Some other race

Three Races

White; Black or African American; American Indian and Alaska Native (AIAN)

White; Black or African American; Asian

White; Black or African American; Native Hawaiian and Other Pacific Islander (NHPI)

White; Black or African American; Native Hawaiian and Other Pacific Islander (NHPI)

White; Black or African American; Some other race

White; American Indian and Alaska Native (AIAN); Asian

White; American Indian and Alaska Native (AIAN); Asian

White; American Indian and Alaska Native (AIAN); Native Hawaiian and Other Pacific Islander (NHPI)

White; American Indian and Alaska Native (AIAN); Native Hawaiian and Other Pacific Islander (NHPI)

White; American Indian and Alaska Native (AIAN); Some other race

White; Asian; Native Hawaiian and Other Pacific Islander (NHPI)

White; Asian; Some other race

White; Native Hawaiian and Other Pacific Islander (NHPI); Some other race

White; Native Hawaiian and Other Pacific Islander (NHPI); Some other race

Black or African American; American Indian and Alaska Native (AIAN); Asian

Black or African American; American Indian and Alaska Native (AIAN); Asian

Black or African American; American Indian and Alaska Native (AIAN); Native Hawaiian and Other Pacific Islander (NHPI)

Black or African American; American Indian and Alaska Native (AIAN); Native Hawaiian and Other Pacific Islander (NHPI)

Black or African American; American Indian and Alaska Native (AIAN); Some other race

Black or African American; Asian; Native Hawaiian and Other Pacific Islander (NHPI)

Black or African American; Asian; Native Hawaiian and Other Pacific Islander (NHPI)

Black or African American; Asian; Some other race

Black or African American; Asian; Some other race

Black or African American; Native Hawaiian and Other Pacific Islander (NHPI); Some other race

Black or African American; Native Hawaiian and Other Pacific Islander (NHPI); Some other race

American Indian and Alaska Native (AIAN); Asian; Native Hawaiian and Other Pacific Islander (NHPI)

American Indian and Alaska Native (AIAN); Asian; Native Hawaiian and Other Pacific Islander (NHPI)

American Indian and Alaska Native (AIAN); Asian; Some other race

American Indian and Alaska Native (AIAN); Asian; Some other race

American Indian and Alaska Native (AIAN); Native Hawaiian and Other Pacific Islander (NHPI); Some other race

American Indian and Alaska Native (AIAN); Native Hawaiian and Other Pacific Islander (NHPI); Some other race

Pacific Islander (NHPI); Some other race	White; Black or African American; American Indian and Alaska Native (AIAN); Asian; Some other race	Cree alone
Asian; Native Hawaiian and Other Pacific Islander (NHPI); Some other race	White; Black or African American; American Indian and Alaska Native (AIAN); Native Hawaiian and Other Pacific Islander (NHPI); Some other race	Cree alone or in any combination
Four Races	White; Black or African American; American Indian and Alaska Native (AIAN); Asian	Creek alone
White; Black or African American; American Indian and Alaska Native (AIAN); Native Hawaiian and Other Pacific Islander (NHPI)	White; Black or African American; Asian; Native Hawaiian and Other Pacific Islander (NHPI); Some other race	Creek alone or in any combination
White; Black or African American; American Indian and Alaska Native (AIAN); Some other race	White; American Indian and Alaska Native (AIAN); Asian; Native Hawaiian and Other Pacific Islander (NHPI); Some other race	Crow alone
White; Black or African American; Asian; Native Hawaiian and Other Pacific Islander (NHPI)	Black or African American; American Indian and Alaska Native (AIAN); Asian; Native Hawaiian and Other Pacific Islander (NHPI); Some other race	Crow alone or in any combination
White; Black or African American; Asian; Some other race	Six Races	Delaware alone
White; Black or African American; Native Hawaiian and Other Pacific Islander (NHPI); Some other race	White; Black or African American; American Indian and Alaska Native (AIAN); Asian; Native Hawaiian and Other Pacific Islander (NHPI); Some other race	Delaware alone or in any combination
White; American Indian and Alaska Native (AIAN); Asian; Native Hawaiian and Other Pacific Islander (NHPI)	American Indian and Alaska Native Tribes	Eskimo alone
White; American Indian and Alaska Native (AIAN); Asian; Some other race	Alaskan Athabaskan alone	Eskimo alone or in any combination
White; American Indian and Alaska Native (AIAN); Native Hawaiian and Other Pacific Islander (NHPI); Some other race	Alaskan Athabaskan alone or in any combination	Houma alone
White; Asian; Native Hawaiian and Other Pacific Islander (NHPI); Some other race	Aleut alone	Houma alone or in any combination
Black or African American; American Indian and Alaska Native (AIAN); Asian; Native Hawaiian and Other Pacific Islander (NHPI)	Aleut alone or in any combination	Iroquois alone
Black or African American; American Indian and Alaska Native (AIAN); Asian; Some other race	Apache alone	Iroquois alone or in any combination
Black or African American; American Indian and Alaska Native (AIAN); Native Hawaiian and Other Pacific Islander (NHPI); Some other race	Apache alone or in any combination	Kiowa alone
Black or African American; Asian; Native Hawaiian and Other Pacific Islander (NHPI); Some other race	Blackfeet alone	Kiowa alone or in any combination
American Indian and Alaska Native (AIAN); Asian; Native Hawaiian and Other Pacific Islander (NHPI); Some other race	Blackfeet alone or in any combination	Latin American Indian alone
Five Races	Cherokee alone	Latin American Indian alone or in any combination
White; Black or African American; American Indian and Alaska Native (AIAN); Asian; Native Hawaiian and Other Pacific Islander (NHPI)	Cherokee alone or in any combination	Lumbee alone
	Cheyenne alone	Lumbee alone or in any combination
	Cheyenne alone or in any combination	Menominee alone
	Chickasaw alone	Menominee alone or in any combination
	Chickasaw alone or in any combination	Navajo alone
	Chippewa alone	Navajo alone or in any combination
	Chippewa alone or in any combination	Osage alone
	Choctaw alone	Osage alone or in any combination
	Choctaw alone or in any combination	Ottawa alone
	Colville alone	Ottawa alone or in any combination
	Colville alone or in any combination	Paiute alone
	Comanche alone	Paiute alone or in any combination
	Comanche alone or in any combination	Pima alone
		Pima alone or in any combination
		Potawatomi alone
		Potawatomi alone or in any combination
		Pueblo alone
		Pueblo alone or in any combination
		Puget Sound Salish alone
		Puget Sound Salish alone or in any combination
		Seminole alone
		Seminole alone or in any combination
		Shoshone alone
		Shoshone alone or in any combination
		Sioux alone
		Sioux alone or in any combination
		Tlingit-Haida alone

Tlingit-Haida alone or in any combination	Native Hawaiian and Other Pacific Islander (NHPI) alone, not Hispanic or Latino	Iranian
Tohono O'Odham alone		Irish
Tohono O'Odham alone or in any combination	Native Hawaiian and Other Pacific Islander (NHPI) alone or in combination with one or more other races, not Hispanic or Latino	Israeli
Ute alone		Italian
Ute alone or in any combination	Some other race alone, not Hispanic or Latino	Latvian
Yakama alone		Lithuanian
Yakama alone or in any combination	Some other race alone or in combination with one or more other races, not Hispanic or Latino	Luxemburger
Yaqui alone		Macedonian
Yaqui alone or in any combination	Two or more races, not Hispanic or Latino	Maltese
Yuman alone		Norwegian
Yuman alone or in any combination	Ancestry Groups	Pennsylvania German
Hispanic or Latino	Acadian/Cajun	Polish
Hispanic or Latino (of any race)	Afghan	Portuguese
Mexican	Albanian	Romanian
Puerto Rican	Alsatian	Russian
Cuban	Arab	Scandinavian
Other Hispanic or Latino	Arab/Arabic	Scotch-Irish
Dominican (Dominican Republic)	Egyptian	Scottish
Central American	Iraqi	Serbian
Costa Rican	Jordanian	Slavic
Guatemalan	Lebanese	Slovak
Honduran	Moroccan	Slovene
Nicaraguan	Palestinian	Subsaharan African
Panamanian	Syrian	African
Salvadoran	Armenian	Cape Verdean
South American	Assyrian/Chaldean/Syriac	Ethiopian
Argentinian	Australian	Ghanian
Bolivian	Austrian	Nigerian
Chilean	Basque	South African
Colombian	Belgian	Swedish
Ecuadorian	Brazilian	Swiss
Paraguayan	British	Turkish
Peruvian	Bulgarian	Ukrainian
Uruguayan	Canadian	United States or American
Venezuelan	Celtic	Welsh
Spaniard	Croatian	West Indian (excluding Hispanic origin groups)
All other Hispanic or Latino	Czech	Bahamian
Not Hispanic or Latino	Czechoslovakian	Barbadian
White alone, not Hispanic or Latino	Danish	Belizean
White alone or in combination with one or more other races, not Hispanic or Latino	Dutch	British West Indian
Black or African American alone, not Hispanic or Latino	English	Dutch West Indian
Black or African American alone or in combination with one or more other races, not Hispanic or Latino	Estonian	Haitian
American Indian and Alaska Native (AIAN) alone, not Hispanic or Latino	European	Jamaican
American Indian and Alaska Native (AIAN) alone or in combination with one or more other races, not Hispanic or Latino	Finnish	Trinidadian and Tobagonian
Asian alone, not Hispanic or Latino	French (except Basque)	West Indian
Asian alone or in combination with one or more other races, not Hispanic or Latino	French Canadian	Yugoslavian
	German	
	Greek	
	Guyanese	
	Hungarian	
	Icelandic	

Appendix 2. Tables Unique to Summary File 4

- PCT7. AGGREGATE POPULATION IN HOUSEHOLDS [1]
Universe: Households
- PCT25. AGGREGATE POPULATION IN FAMILIES [1]
Universe: Families

Place of Birth, Citizenship Status, and Year of Entry —

- PCT43. SEX BY PLACE OF BIRTH BY CITIZENSHIP STATUS [31]
Universe: Total population
- PCT44. SEX BY AGE BY CITIZENSHIP STATUS [23]
Universe: Total population
- PCT45. SEX BY YEAR OF ENTRY FOR THE FOREIGN-BORN POPULATION [19]
Universe: Foreign-born population
- PCT46. SEX BY YEAR OF ENTRY BY CITIZENSHIP STATUS FOR THE FOREIGN-BORN POPULATION [21]
Universe: Foreign-born population
- PCT47. SEX BY PLACE OF BIRTH BY YEAR OF ENTRY FOR THE FOREIGN-BORN POPULATION [89]
Universe: Foreign-born population

School Enrollment and Educational Attainment —

- PCT66. SEX BY ARMED FORCES STATUS BY SCHOOL ENROLLMENT BY EDUCATIONAL ATTAINMENT BY EMPLOYMENT STATUS FOR THE POPULATION 16 TO 19 YEARS [45]
Universe: Population 16 to 19 years

Industry, Occupation, and Class of Worker —

- PCT85. SEX BY INDUSTRY FOR THE EMPLOYED CIVILIAN POPULATION 16 YEARS AND OVER [207]
Universe: Employed civilian population 16 years and over
- PCT86. SEX BY OCCUPATION FOR THE EMPLOYED CIVILIAN POPULATION 16 YEARS AND OVER [253]
Universe: Employed civilian population 16 years and over

Income (Family) —

- PCT115. MEDIAN FAMILY INCOME IN 1999 (DOLLARS) BY NUMBER OF WORKERS IN FAMILY IN 1999 [5]
Universe: Families
- NOTE: When a category other than Total Population is selected, the data in this table refer to the race, Hispanic or Latino origin, American Indian or Alaska Native tribe, or ancestry of the householder.
- PCT117. FAMILY SIZE BY FAMILY INCOME IN 1999 [103]
Universe: Families
- NOTE: When a category other than Total Population is selected, the data in this table refer to the race, Hispanic or Latino origin, American Indian or Alaska Native tribe, or ancestry of the householder.
- PCT118. MEDIAN FAMILY INCOME IN 1999 (DOLLARS) BY FAMILY SIZE [7]
Universe: Families
- NOTE: When a category other than Total Population is selected, the data in this table

refer to the race, Hispanic or Latino origin, American Indian or Alaska Native tribe, or ancestry of the householder.

- PCT119. MEDIAN FAMILY INCOME IN 1999 (DOLLARS) BY FAMILY TYPE BY AGE OF HOUSEHOLDER [29]
Universe: Families

NOTE: When a category other than Total Population is selected, the data in this table refer to the race, Hispanic or Latino origin, American Indian or Alaska Native tribe, or ancestry of the householder.

Income and Earnings (Individuals) —

- PCT134. AGGREGATE INCOME IN 1999 (DOLLARS) BY SEX BY WORK EXPERIENCE IN 1999 FOR THE POPULATION 15 YEARS AND OVER WITH INCOME [7]
Universe: Population 15 years and over with income in 1999

Poverty Status (Individuals) —

- PCT145. RATIO OF INCOME IN 1999 TO POVERTY LEVEL BY AGE BY EDUCATIONAL ATTAINMENT FOR THE POPULATION 18 YEARS AND OVER [111]
Universe: Population 18 years and over for whom poverty status is determined
- PCT146. RATIO OF INCOME IN 1999 TO POVERTY LEVEL BY TYPE OF PUBLIC ASSISTANCE INCOME IN 1999 [16]
Universe: Population for whom poverty status is determined
- PCT148. POVERTY STATUS IN 1999 BY DISABILITY STATUS BY AGE FOR THE POPULATION 5 YEARS AND OVER [43]
Universe: Civilian noninstitutionalized population 5 years and over for whom poverty status is determined
- PCT149. POVERTY STATUS IN 1999 BY CITIZENSHIP STATUS BY YEAR OF ENTRY FOR THE FOREIGN-BORN POPULATION [27]
Universe: Foreign-born population for whom poverty status is determined

Poverty Status (Family) —

- PCT159. POVERTY STATUS IN 1999 OF FAMILIES BY DISABILITY STATUS OF HOUSEHOLDER [7]
Universe: Families
- NOTE: When a category other than Total Population is selected, the data in this table refer to the race, Hispanic or Latino origin, American Indian or Alaska Native tribe, or ancestry of the householder.

Order Form

____Yes! I want the Census 2000 Summary File 4. Please send me the CD-ROMs and/or DVDs for the states I have chosen below. I have enclosed \$ _____ (check or money order only) for my selection or provided credit card information below.

Thanks for your order!

Name: _____ Date: _____

Company: _____

Address: _____
(City, state, ZIP code) (No P.O. boxes)

Phone: () _____ Fax: () _____

E-mail address: _____

States (1)	Number of DVD, CD-ROM (per state) (2)	Price (per set) (3)	Quantity (4)	Total (5)	CD-ROM States (1)	Number of DVD, Price (per state) (2)	(per set) (3)	Quantity (4)	Total (5)
------------	---------------------------------------	---------------------	--------------	-----------	-------------------	--------------------------------------	---------------	--------------	-----------

DVDs

U.S. Summary Software Version (All states and Puerto Rico)		<i>Best Buy!</i>		
U.S. Summary File (with tract data)		\$210		
National File (no tract data)		\$175		
ASCII Version (All states and Puerto Rico)				
U.S. Summary (with tract data)		\$315		
National File (no tract data)		\$210		

CD-ROMs (*Indicates DVD)

Alabama	2	75.00		
Alaska	1	50.00		
Arizona	2	75.00		
Arkansas	2	75.00		
California*	1	70.00		
Colorado	2	75.00		
Connecticut	2	75.00		
Delaware	1	50.00		
District of Columbia	1	50.00		
Florida*	1	70.00		
Georgia	2	75.00		
Hawaii	1	50.00		
Idaho	1	50.00		
Illinois*	1	70.00		
Indiana	2	75.00		
Iowa	2	75.00		
Kansas	2	75.00		
Kentucky	2	75.00		
Louisiana	2	75.00		
Maine	1	50.00		
Maryland	2	75.00		

CD-ROMs (Cont.)

Massachusetts	2	\$75.00		
Michigan	3	100.00		
Minnesota	3	100.00		
Mississippi	1	50.00		
Missouri	2	75.00		
Montana	1	50.00		
Nebraska	1	50.00		
Nevada	1	50.00		
New Hampshire	1	50.00		
New Jersey	3	100.00		
New Mexico	1	50.00		
New York*	1	70.00		
North Carolina	3	100.00		
North Dakota	1	50.00		
Ohio	3	100.00		
Oklahoma	2	75.00		
Oregon	2	75.00		
Pennsylvania	4	125.00		
Rhode Island	1	50.00		
South Carolina	2	75.00		
South Dakota	1	50.00		
Tennessee	2	75.00		
Texas*	1	70.00		
Utah	1	50.00		
Vermont	1	50.00		
Virginia	2	75.00		
Washington	2	75.00		
West Virginia	1	50.00		
Wisconsin	3	100.00		
Wyoming	1	50.00		
Puerto Rico	1	50.00		

SUBTOTAL

\$

SUBTOTAL

\$

To place your order by phone (have your credit card ready), please call our Customer Services Center at 301-763-INFO (4636), or access our Web site at <http://www.census.gov> and select "Catalog."

TOTAL \$ _____

METHOD OF PAYMENT (please check one)

Overseas Service — add \$25.00

Check payable to Commerce-Census

9 Census deposit account

Visa, MasterCard, AMEX, or Discover account number:

Expiration date: Month/Year: ____/____

Name on card: _____

Signature: _____

For mail orders only, complete this order form and send it with your payment to: U.S. Department of Commerce
U.S. Census Bureau (MS 0801)
P.O. Box 277943,
Atlanta, GA 30384-7943