

Florida Department of  
Agriculture & Consumer Services  
Charles H. Bronson, Commissioner  
Division of Plant Industry  
PO Box 147100, Gainesville FL 32614-7100



*Florida*

# INSECT

COLORING BOOK



For more information see these websites:  
[www.doacs.state.fl.us](http://www.doacs.state.fl.us) • [www.doacs.state.fl.us/~pi](http://www.doacs.state.fl.us/~pi) • [creatures.ifas.ufl.edu/](http://creatures.ifas.ufl.edu/)

Florida Department of  
Agriculture & Consumer Services  
Charles H. Bronson, Commissioner  
Division of Plant Industry  
PO Box 147100, Gainesville FL 32614-7100



*Florida*

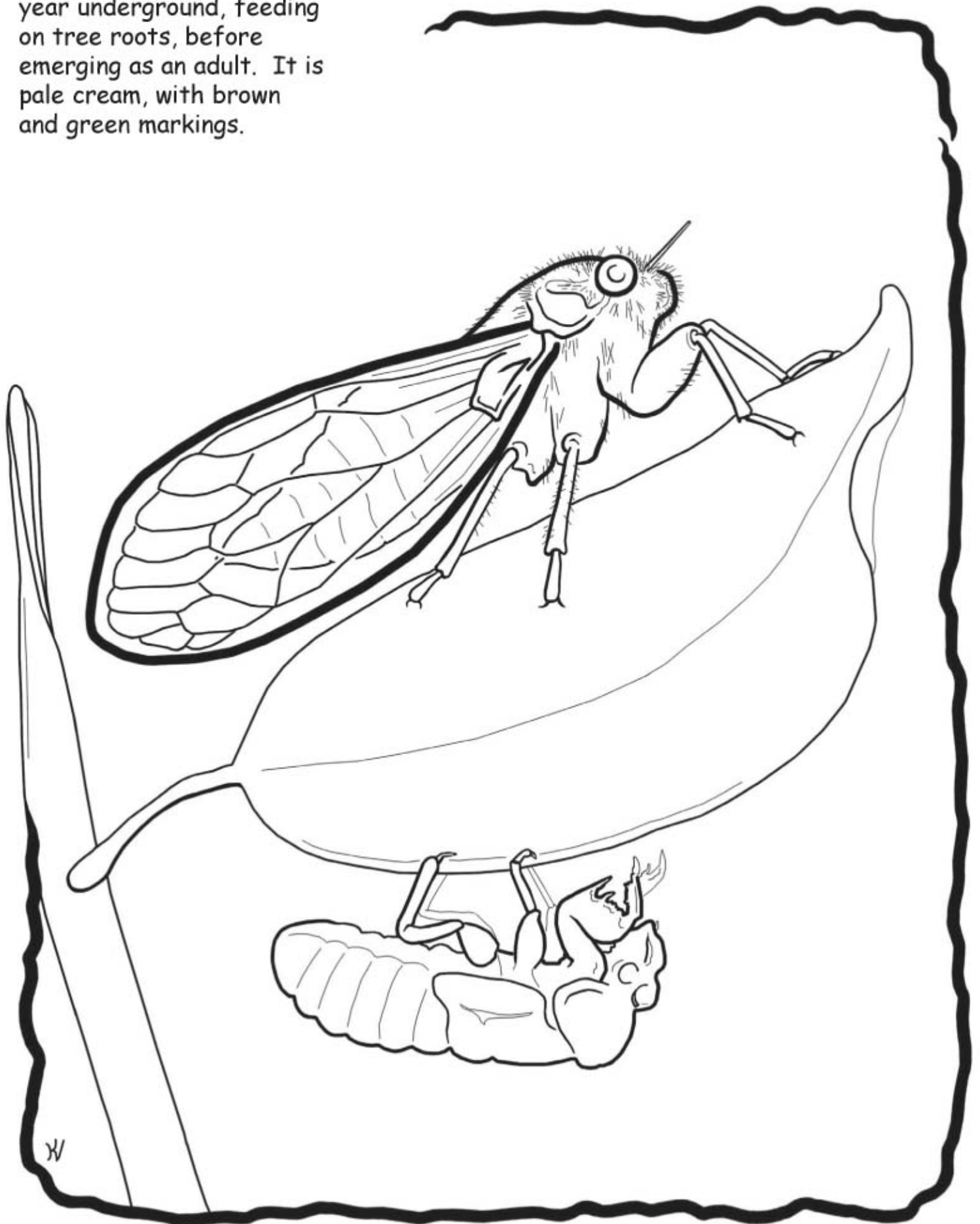
# INSECT

**COLORING BOOK**

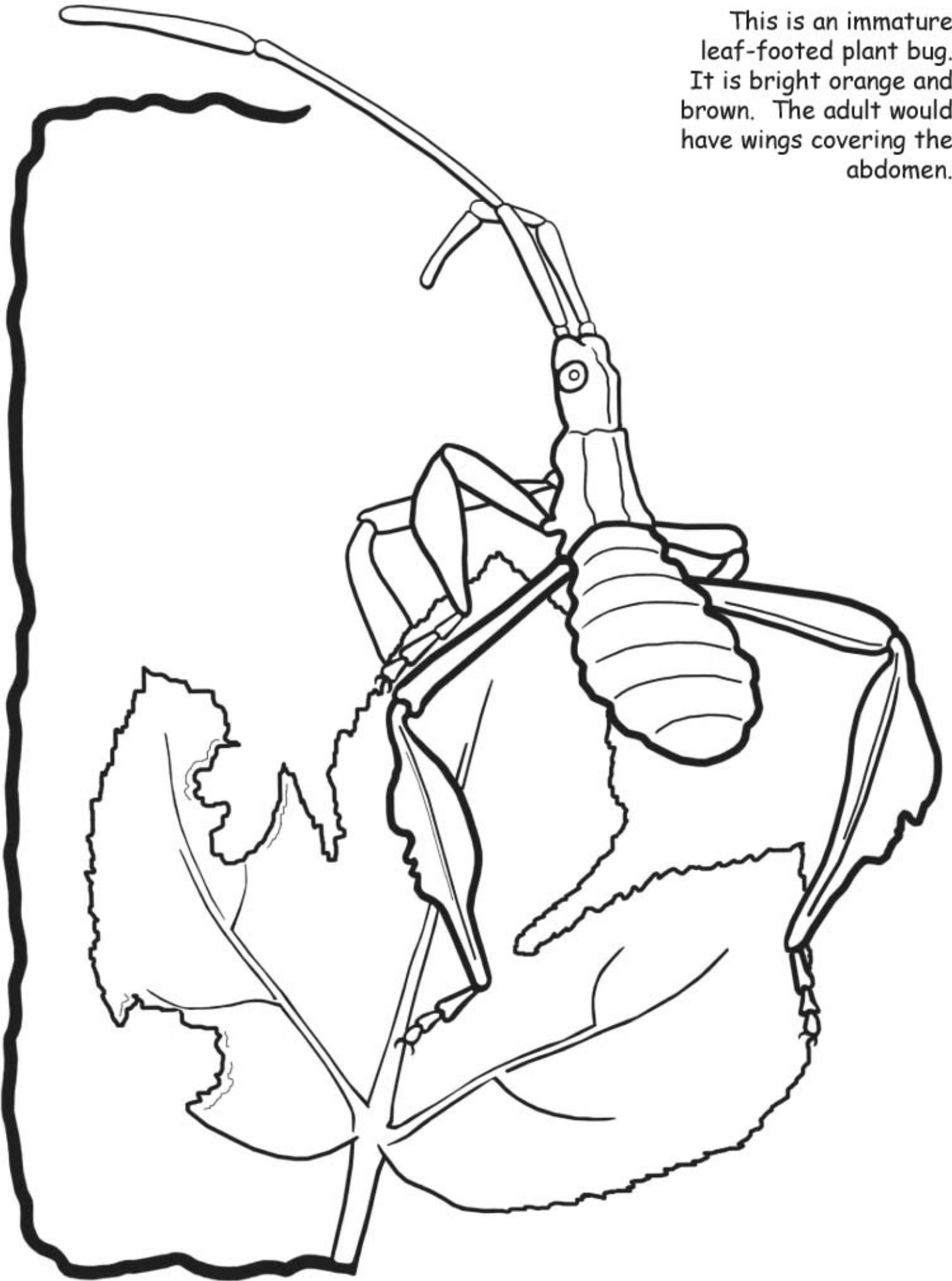


For more information see these websites:  
[www.doacs.state.fl.us](http://www.doacs.state.fl.us) • [www.doacs.state.fl.us/~pi](http://www.doacs.state.fl.us/~pi) • [creatures.ifas.ufl.edu/](http://creatures.ifas.ufl.edu/)

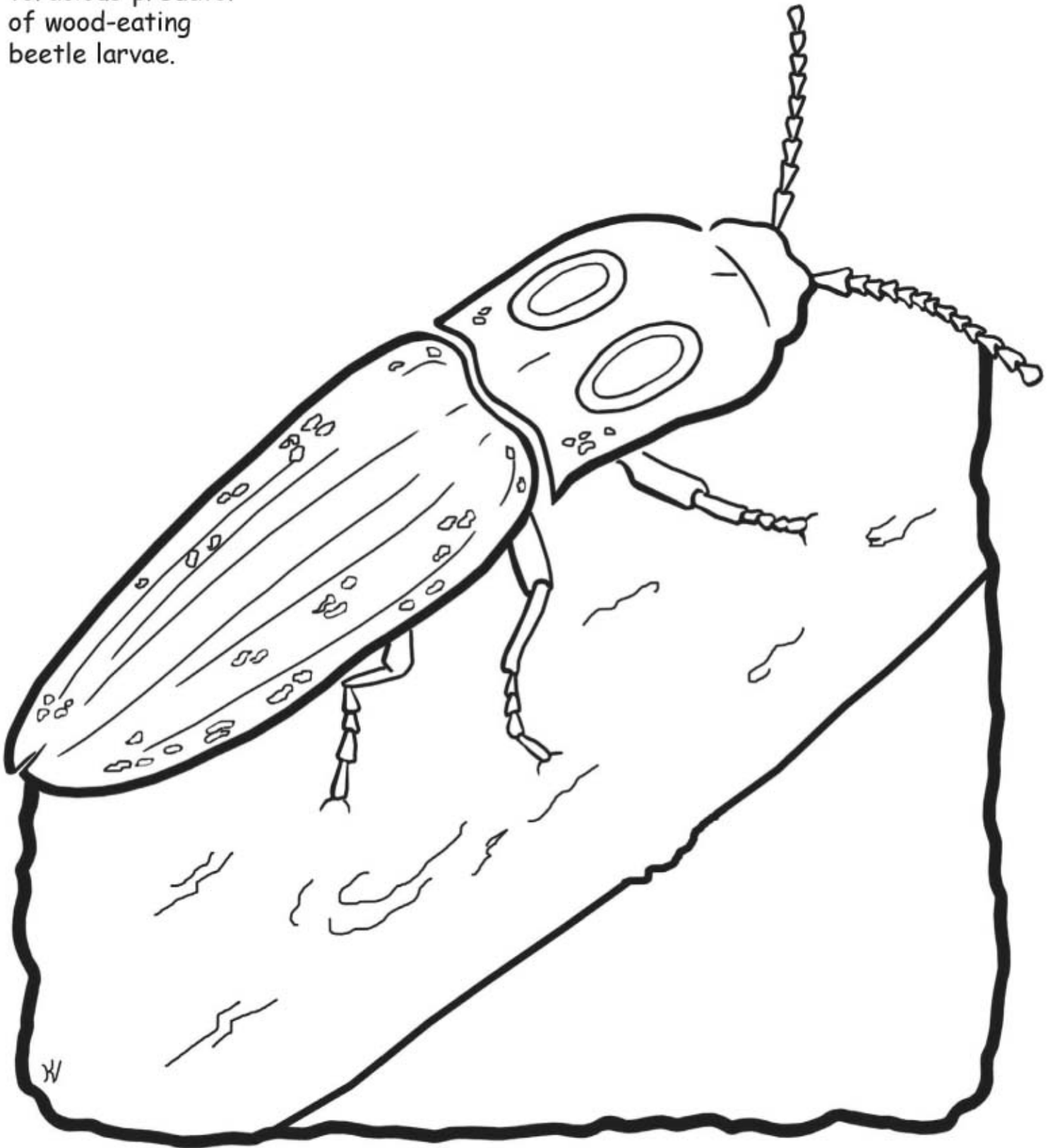
The annual cicada spends a year underground, feeding on tree roots, before emerging as an adult. It is pale cream, with brown and green markings.



This is an immature  
leaf-footed plant bug.  
It is bright orange and  
brown. The adult would  
have wings covering the  
abdomen.

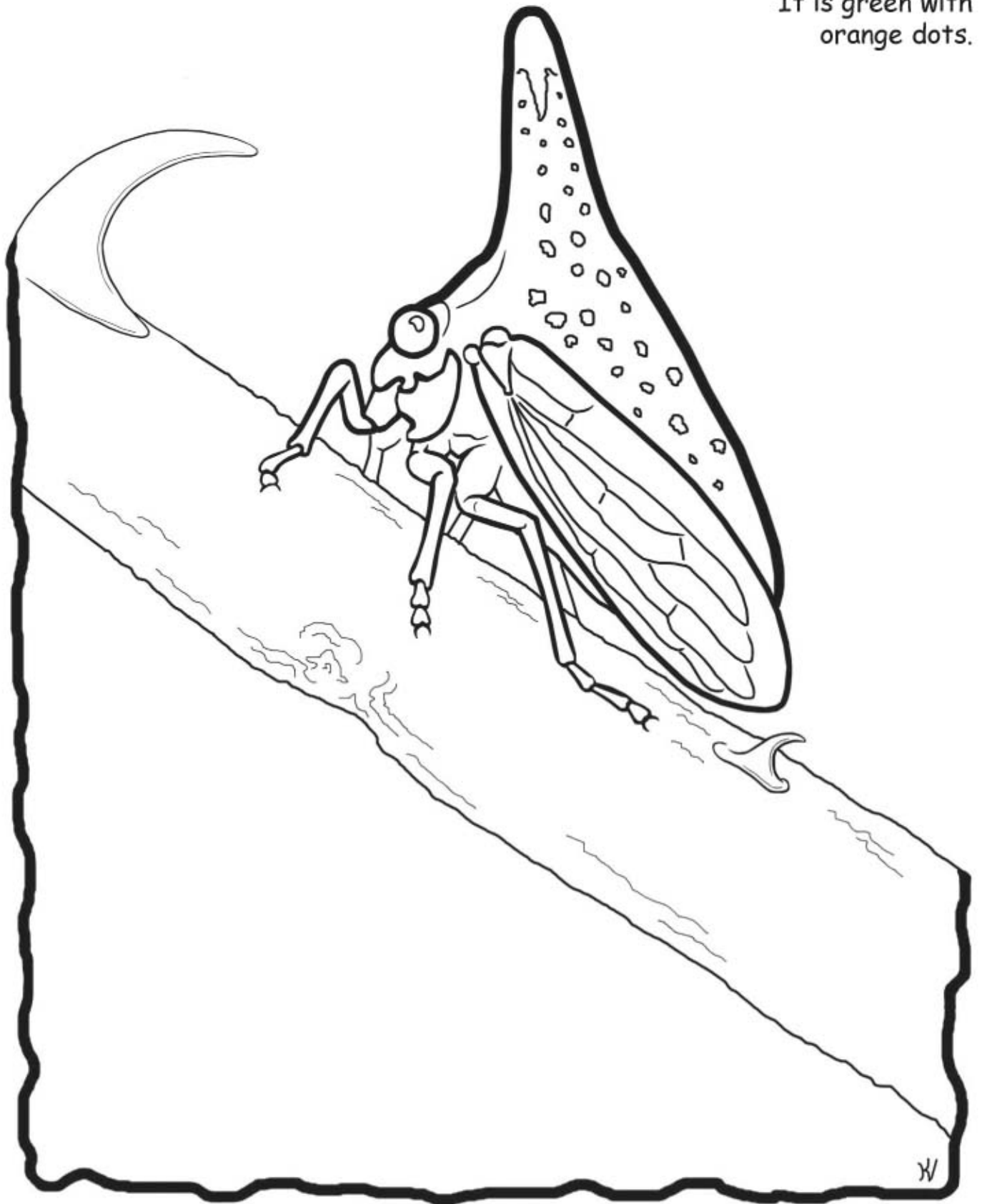


This is the eyed elater. It is black with white spots. The eye spots are black, ringed with white. It is a voracious predator of wood-eating beetle larvae.

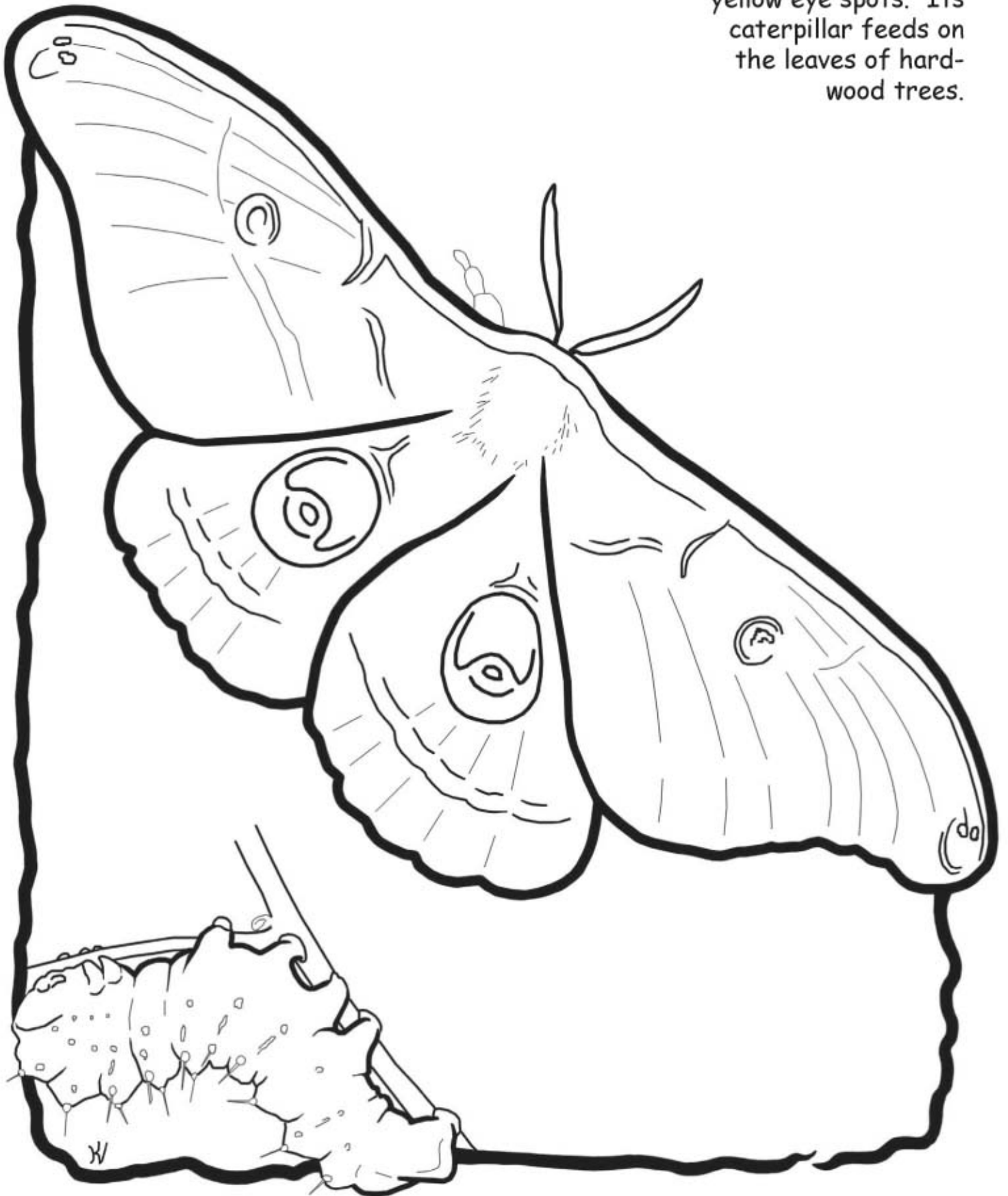


RV

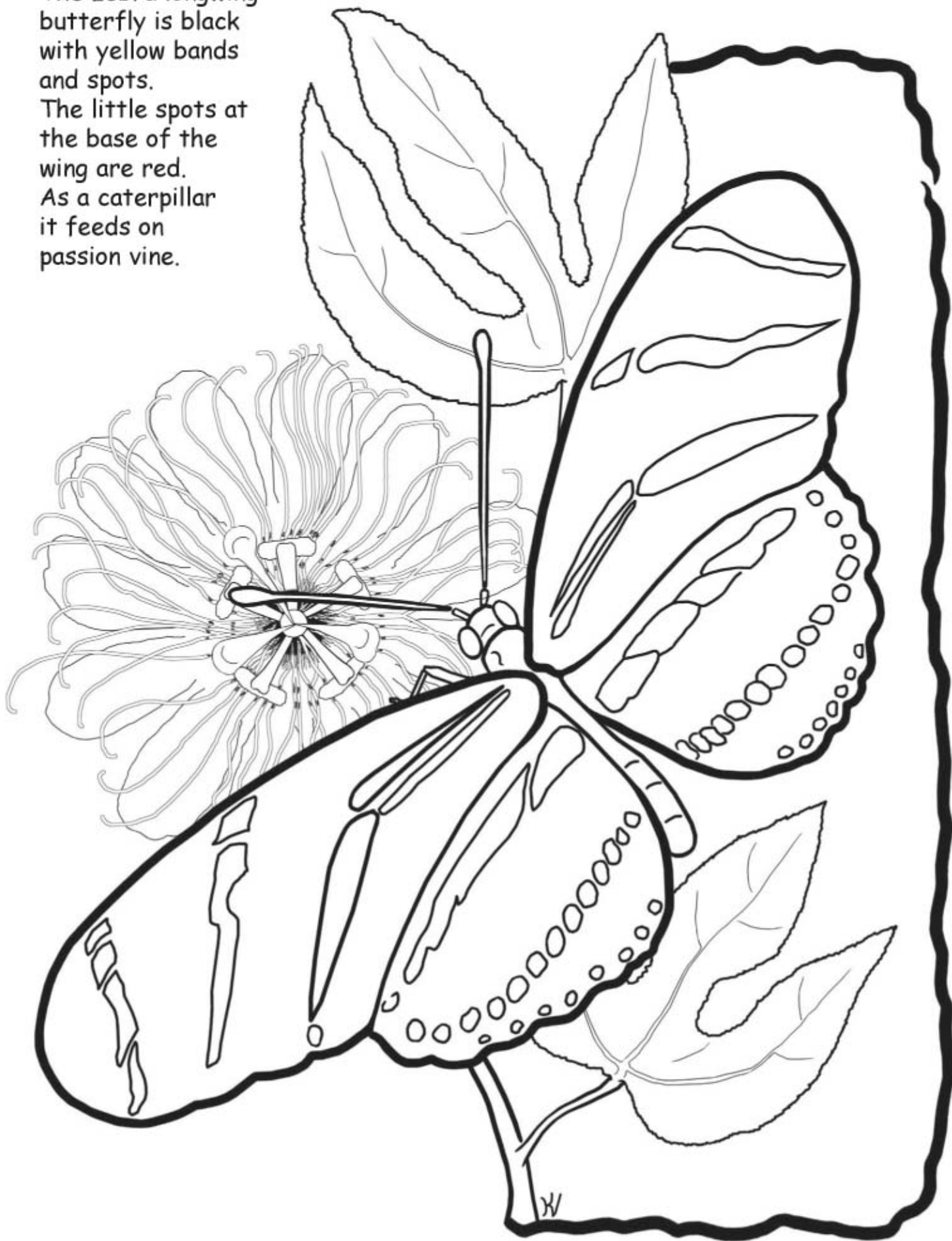
This tree-hopper is  
pretending to be a thorn.  
That way it can avoid  
becoming somebody's lunch.  
Who would eat a thorn?  
It is green with  
orange dots.



This is the Polyphemus moth. It is shades of grey and brown with blue and yellow eye spots. Its caterpillar feeds on the leaves of hardwood trees.



The zebra longwing butterfly is black with yellow bands and spots. The little spots at the base of the wing are red. As a caterpillar it feeds on passion vine.

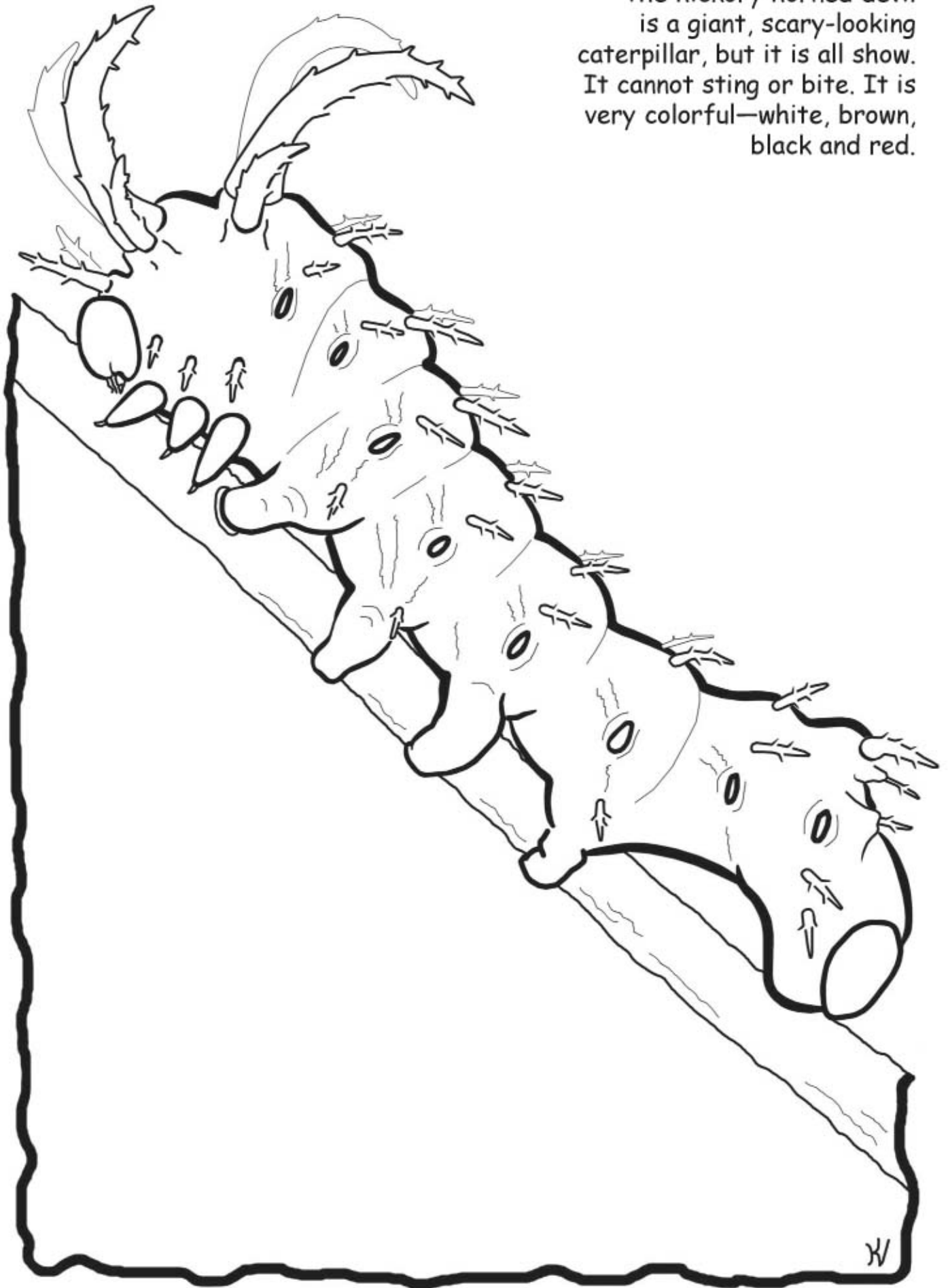




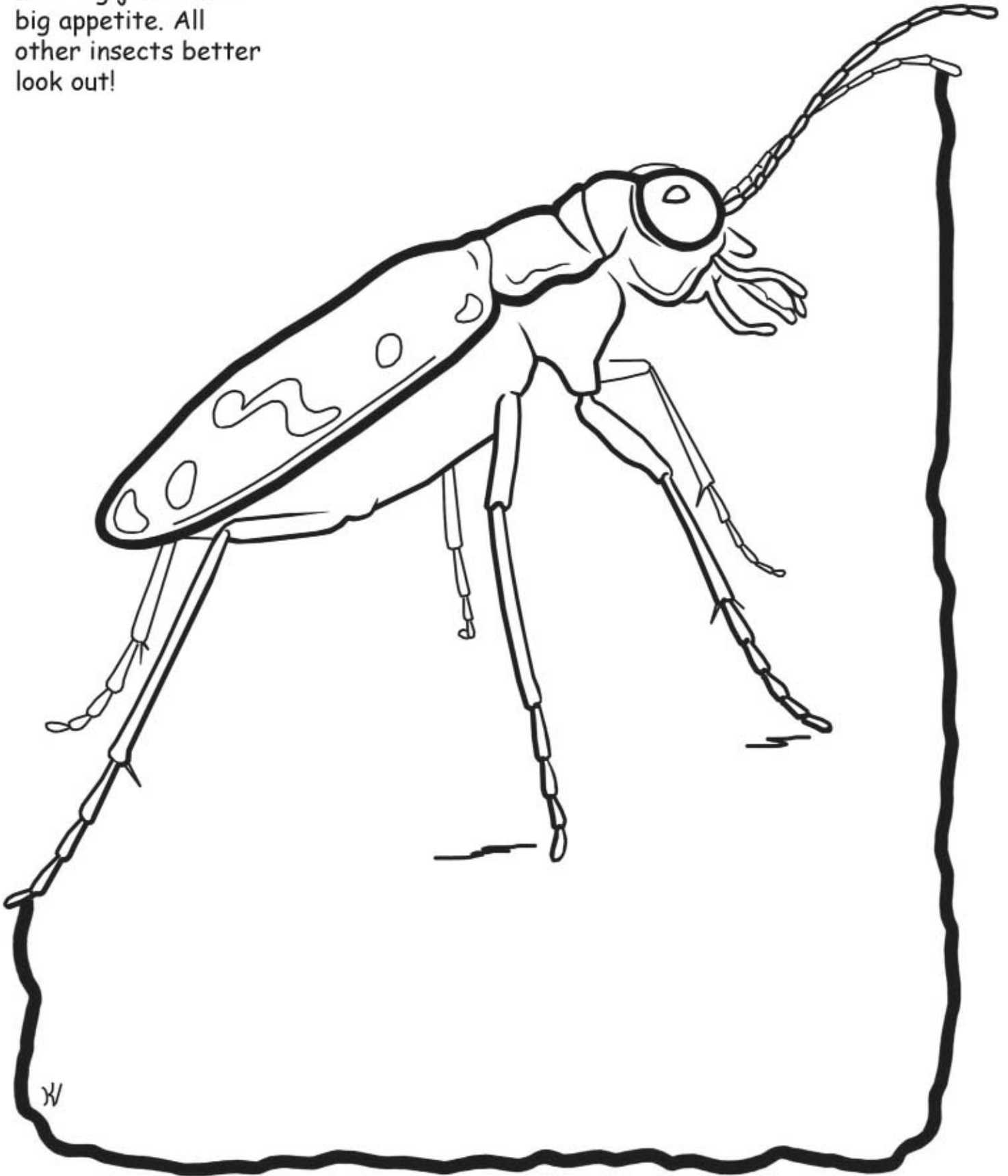
This is a praying mantis. It is green and brown so that it will blend in with the leaves, and other insects won't see it as it stalks them.



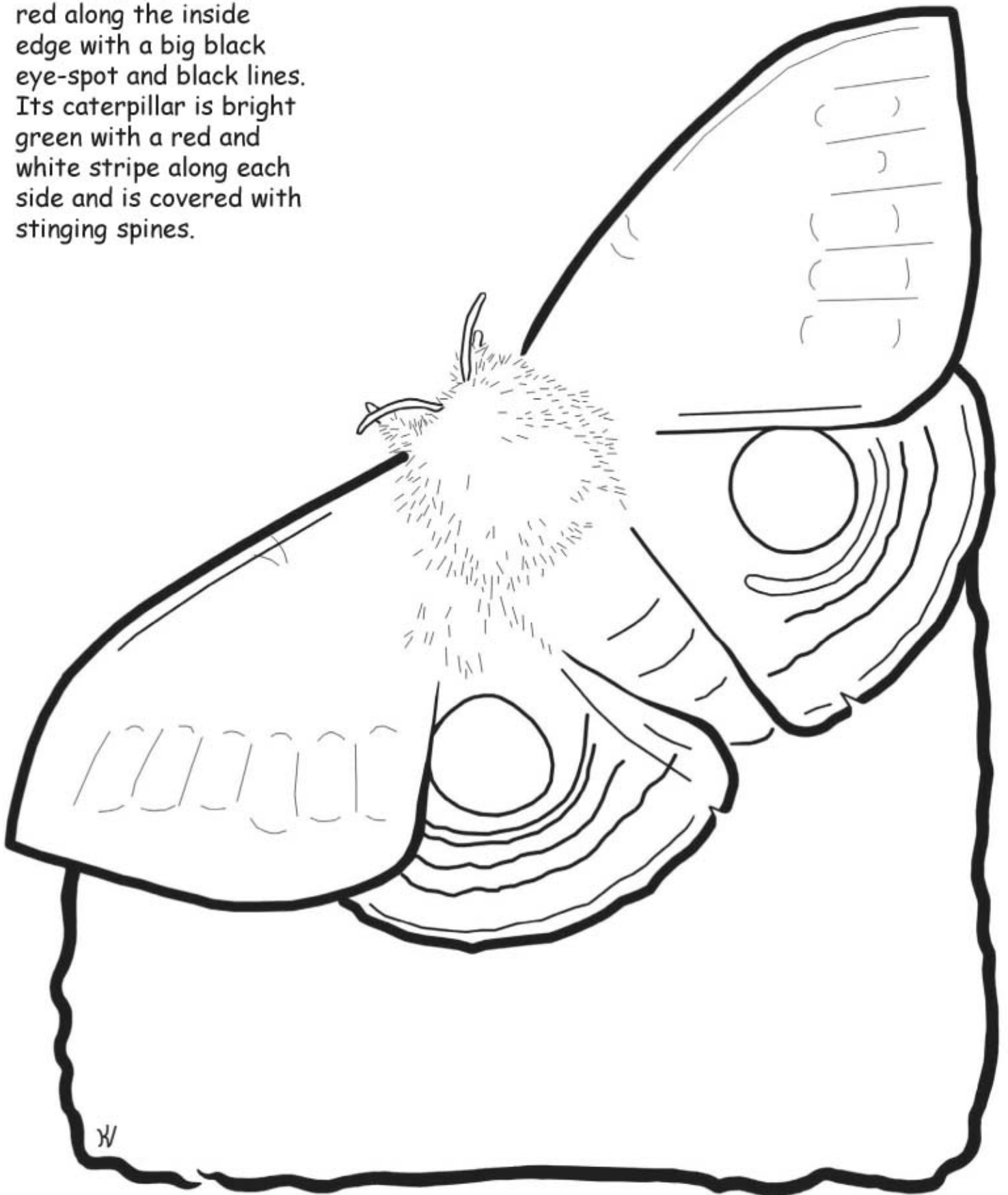
The hickory horned devil is a giant, scary-looking caterpillar, but it is all show. It cannot sting or bite. It is very colorful—white, brown, black and red.



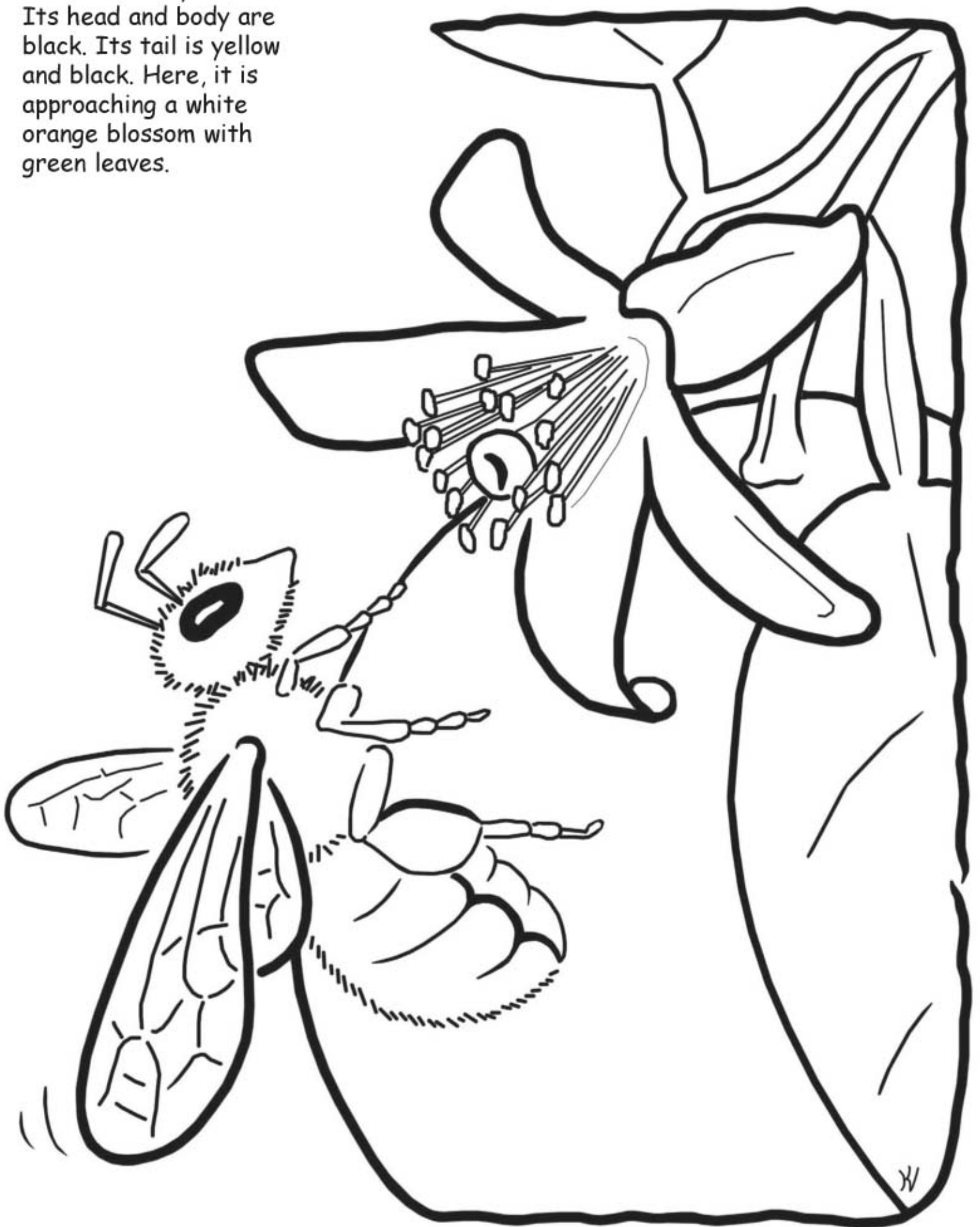
This is a tiger beetle. It is called that because it is just like a tiny tiger, with big jaws and a big appetite. All other insects better look out!



The io moth is a very beautiful bright yellow all over except for the back wings, which are red along the inside edge with a big black eye-spot and black lines. Its caterpillar is bright green with a red and white stripe along each side and is covered with stinging spines.

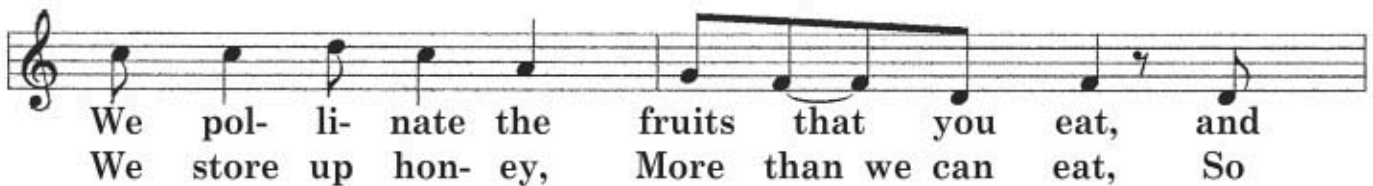
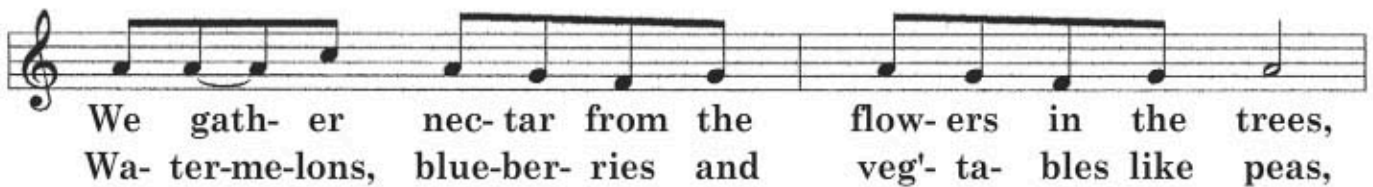
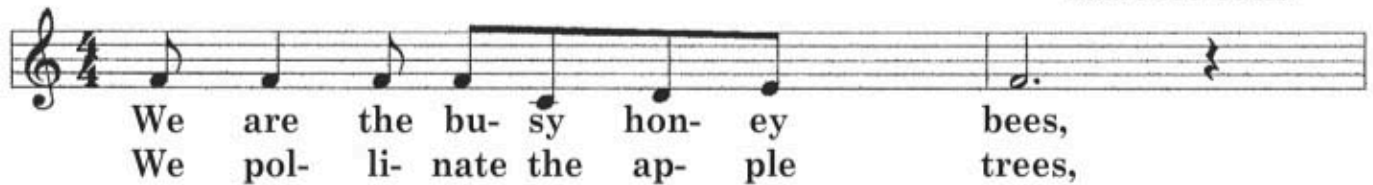


This is a honeybee.  
Its head and body are  
black. Its tail is yellow  
and black. Here, it is  
approaching a white  
orange blossom with  
green leaves.



# THE BUSY HONEYBEE

Laurence Cutts



FLORIDA DEPARTMENT OF AGRICULTURE & CONSUMER SERVICES  
DIVISION OF PLANT INDUSTRY  
PO Box 147100, Gainesville FL 32614-7100

Illustrations by Katrina Vitkus, Division of Plant Industry  
Text written by Dr. Mike Thomas, Division of Plant Industry