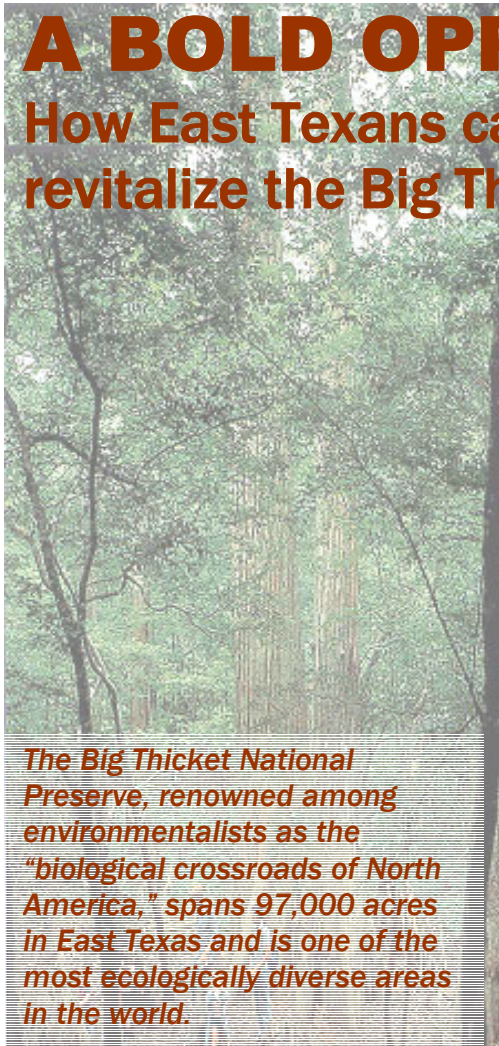


A BOLD OPPORTUNITY:

How East Texans can connect, preserve and revitalize the Big Thicket National Preserve



The Big Thicket National Preserve, renowned among environmentalists as the "biological crossroads of North America," spans 97,000 acres in East Texas and is one of the most ecologically diverse areas in the world.

"The Big Thicket National Preserve is an ecological treasure. But with the right vision and support it can be even more: one of the premier eco-tourism attractions in the southern United States.

Working together, we have a once-in-a-lifetime opportunity to connect, preserve and revitalize the Big Thicket in a way that protects its scientific value while attracting 1 million visitors a year to our region, thus inspiring visitors and their children with a new appreciation for our remarkable ecological heritage."

—U.S. Congressman Kevin Brady

Despite its unique attributes, the Big Thicket National Preserve may well be one of the best kept secrets in America.

Although facing the challenges of increased development, segmented lands and stagnant federal budgets, the Big Thicket holds enormous potential to attract tourists from around the state and nation to experience its special wonder.

U.S. Congressman Kevin Brady of Texas, working with The Big Thicket Association, the Texas Conservation Fund and National Parks & Wildlife, is introducing legislation, H.R.5891, with two bold goals: protect this environmental treasure and increase tourism to 1 million visitors a year by providing the Big Thicket and surrounding East Texas communities' new tools and resources.

ECO-TOURISM:

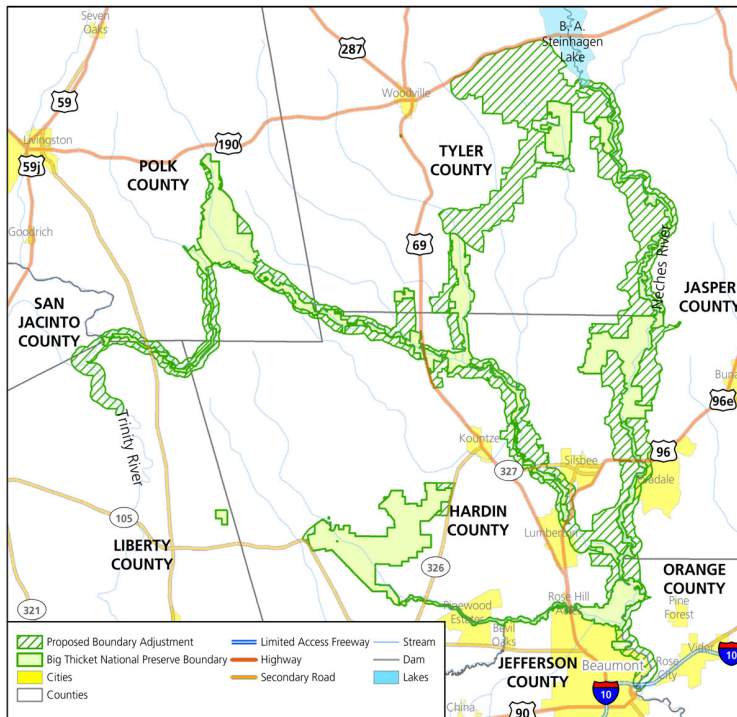
An interactive visitor center will give people a place from which to start their journey - they will then be able to take advantage of docks and an integrated GPS system as they canoe or kayak through the Thicket. A canopy walk would provide visitors and researchers a bird's-eye view while elevated boardwalks would allow more people to enjoy the Thicket firsthand.

Over...

THE BIG THICKET: H.R. 5891

CPR: CONNECT. PRESERVE. REVITALIZE.

CONNECT. Expands the boundaries by allowing willing landowners to sell or donate their land to the Preserve to connect its 15 segments, nine land units and six water corridors. This will both protect its biological and scientific value, as well as provide a better experience to visitors. This is especially timely with the sale of thousands of acres of timberland previously held by Temple-Inland.



PRESERVE. By adding 100,000 acres to the Preserve we will be able to protect this unique mix of southeastern swamps, eastern forests, central plains, pine savannas and dry sandhills.

REVITALIZE. Allow for creation of family-friendly eco-tourism, including, water-based GPS way points and elevated canopy walks.

CALL TO ACTION

JOIN US IN PROTECTING AND HIGHLIGHTING THIS NATIONAL TREASURE.

This project will only happen with your support and the support of local communities and residents. We need your letters and resolutions of support, letters to local newspapers and elected officials, and for you to share the economic and environmental benefits with your friends and family. Please contact me wherever I may be of assistance as we work to make this dream a reality.

Congressman Kevin Brady | Texas Eighth Congressional District

Contact: Todd Stephens at 1-877-441-5700

301 Cannon House Office Building | Washington, DC 20515