



Febrile Respiratory Illness (FRI) Surveillance Update

Operational Infectious Diseases
Naval Health Research Center, San Diego, CA



Week 36 (through 8 September 2012)

Contact Information

Address:
Commanding Officer
Attn: Code 166
Naval Health Research Center
140 Sylvester Rd.
San Diego, CA 92106

Web:
www.med.navy.mil/sites/nhrc/geis

Email: NHRC-FRI@med.navy.mil

Influenza

NHRC Laboratory-Confirmed Influenza Cases, US Military Basic Trainees

Site	Current Week*				2011-12			
	A/H1	A/H3	A/pH1N1	B	A/H1	A/H3	A/pH1N1	B
Ft. Benning						9	1	2
Ft. Jackson						1		7
Ft. Leonard Wood						2	1	
NRTC Great Lakes							8	2
Lackland AFB						4		
MCRD Parris Island						2	1	8
MCRD San Diego						1		3
CGTC Cape May							5	
Total	0	0	0	0	0	19	16	22

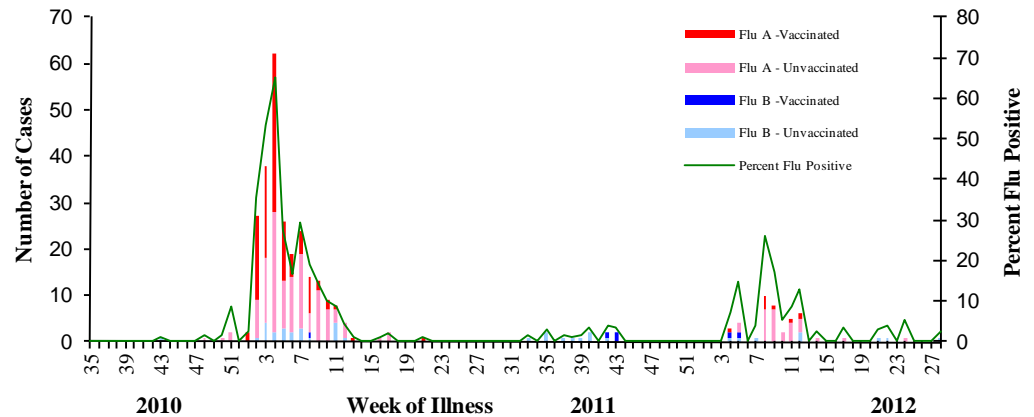
*Among 30 samples tested

- NHRC also conducts shipboard FRI surveillance that includes large-deck ships of the 2nd (Atlantic), 3rd (Pacific), and 7th (Far East) Fleets.
- NHRC-CDC-BIDS collaborative border FRI surveillance program is ongoing at 5 US-Mexico border clinics in San Ysidro, Calexico, Brawley, El Centro, and Ft. Yuma.
- Influenza isolates and data from basic training, shipboard, and border surveillance are shared with the CDC.
- For more information about shipboard or border FRI surveillance, please [contact NHRC](#).

Items of Note

- FRI rates at all basic training centers are at or below expected values

Vaccination Status of Confirmed Influenza Cases Among Military Basic Trainees, 2010-12

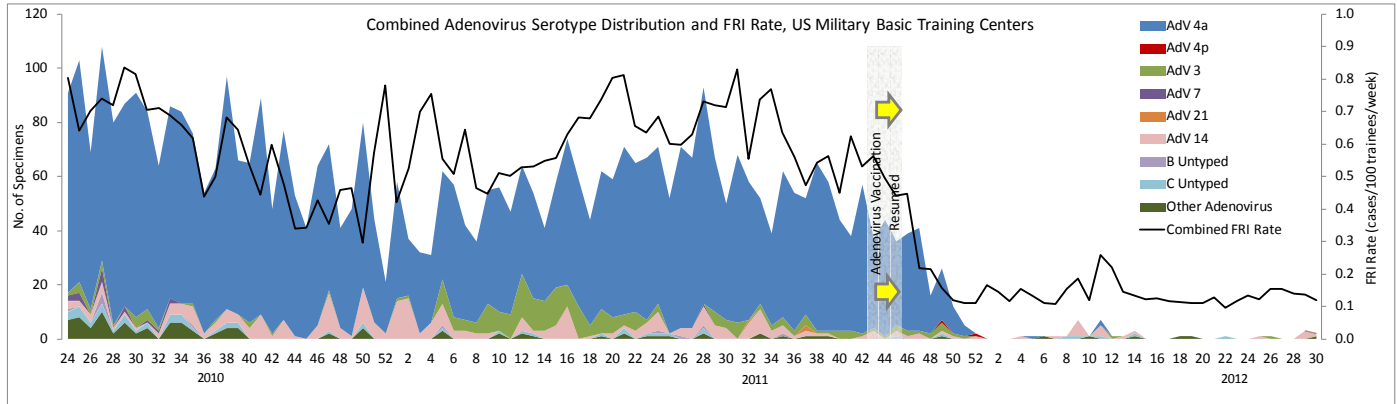


Other Items of Interest

- NHRC is conducting laboratory-based surveillance for meningococcal disease. The program's purpose is to track and characterize meningococcal cases among DoD medical beneficiaries. For more information and the most recent data, [click here](#).

Adenovirus

- Vaccination against types 4 and 7 adenovirus was instituted at all basic training centers by mid-November 2011 (week 45).
- FRI rates and the proportion of FRI cases positive for adenovirus have decreased markedly since vaccine was reintroduced.
- Type 14 adenovirus is present at MCRD Parris Island.



FRI Rates

- FRI surveillance is ongoing at 8 U.S. military basic training centers, representing all service branches. As each week’s FRI count is reported, [FRI Rate Status](#) is classified into one of 3 categories:
 - At or below expected value (expected value shown as dashed line)
 - Moderately elevated
 - Substantially elevated

Week ending 8 September 2012:

- **At or below expected value:**

- [Fort Benning](#)
- [Fort Jackson](#)
- [Fort Leonard Wood](#)
- [Naval Recruit Training Command, Great Lakes](#)
- [Marine Corps Recruit Depot, San Diego](#)
- [Marine Corps Recruit Depot, Parris Island](#)
- [Lackland Air Force Base](#)
- [Coast Guard Training Center, Cape May](#)

• **Moderately elevated:**

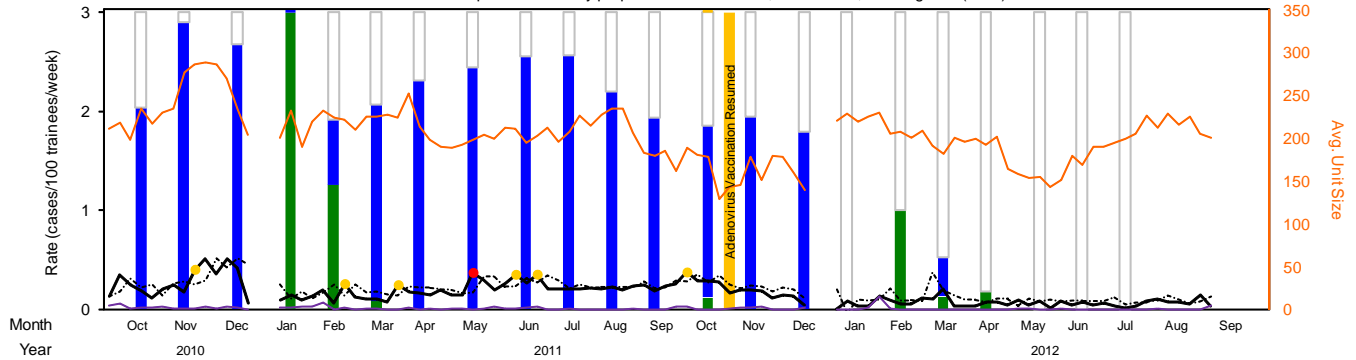
None

• **Substantially elevated:**

None

Ft. Benning FRI Rates and Diagnostic Test Results

Shaded bars represent monthly proportions of Influenza, Adenovirus, and negative (clear) results

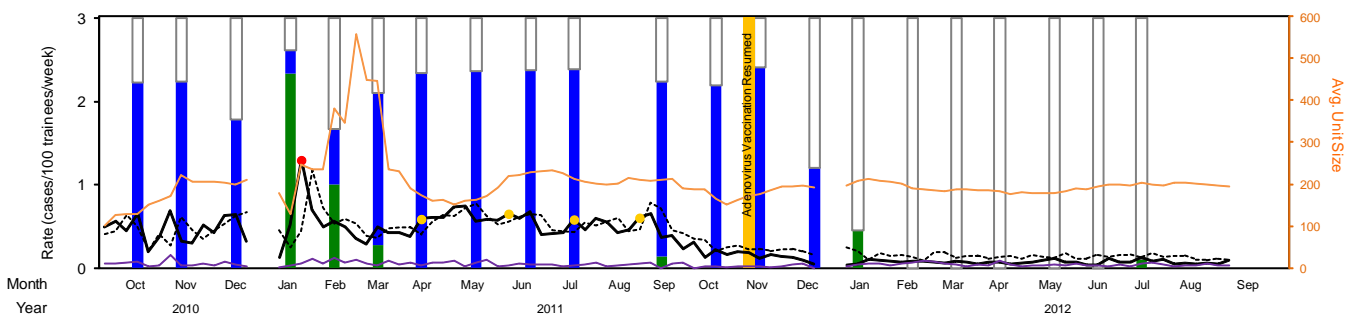


Samples Received	56	65	28	24	50	74	66	65	68	62	68	62	50	40	15	10	24	23	17	15	14	23	
Adenovirus Positive	68%	97%	89%	4%	22%	66%	77%	82%	85%	85%	74%	65%	58%	65%	60%	0%	0%	13%	0%	0%	0%	0%	0%
Flu Positive	0%	0%	0%	100%	42%	3%	0%	0%	0%	0%	0%	0%	4%	0%	0%	0%	33%	4%	6%	0%	0%	0%	
AdV Subtype	4	100%	98%	100%		4%	10%	57%	91%	89%	94%	98%	100%	100%	100%								
	7									2%													
	14					4%		2%															
	21																						
	3			100%	100%	88%	90%	38%	5%	8%	6%	3%									33%		
	C	2%				4%		4%	3%	2%											67%		
Flu Subtype													100%										
B				8%	10%																		
H1																							
H3				17%													88%	100%	100%				
pH1N1				75%	90%	100%											13%						
Untyped																							

[Back to FRI Report](#)

Ft. Jackson FRI Rates and Diagnostic Test Results

Shaded bars represent monthly proportions of Influenza, Adenovirus, and negative (clear) results

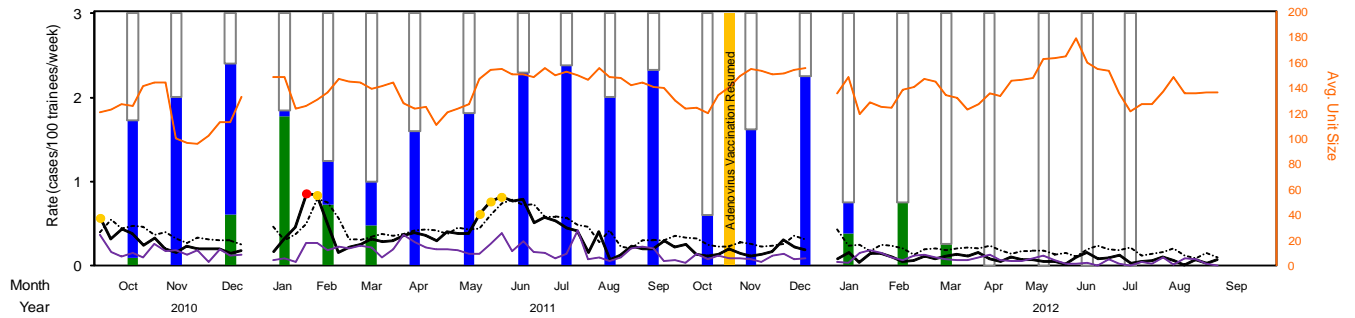


Samples Received	74	71	42	63	45	90	64	76	86	39	0	47	63	41	10	34	20	26	23	27	14	30	
Adenovirus Positive	74%	75%	60%	10%	22%	61%	78%	79%	79%	79%	0%	70%	73%	80%	40%	0%	0%	0%	0%	0%	0%	0%	0%
Flu Positive	0%	0%	0%	78%	33%	9%	0%	0%	0%	0%		4%	0%	0%	0%	15%	0%	0%	0%	0%	0%	0%	3%
AdV Subtype	4	100%	100%	100%	100%	98%	98%	100%	99%	97%		100%	100%	70%	75%								
	7																						
	14																						
	21																						
	3					2%	2%							27%	25%								
	C								1%	3%				3%									
Flu Subtype																							
B				8%	13%																		
H1																							
H3				6%												80%							
pH1N1				86%	100%	88%																	
Untyped																							

[Back to FRI Report](#)

- At or below expected value (expected = dashed line) • Moderately elevated • Substantially elevated — Pneumonia rate (incl. afebrile)

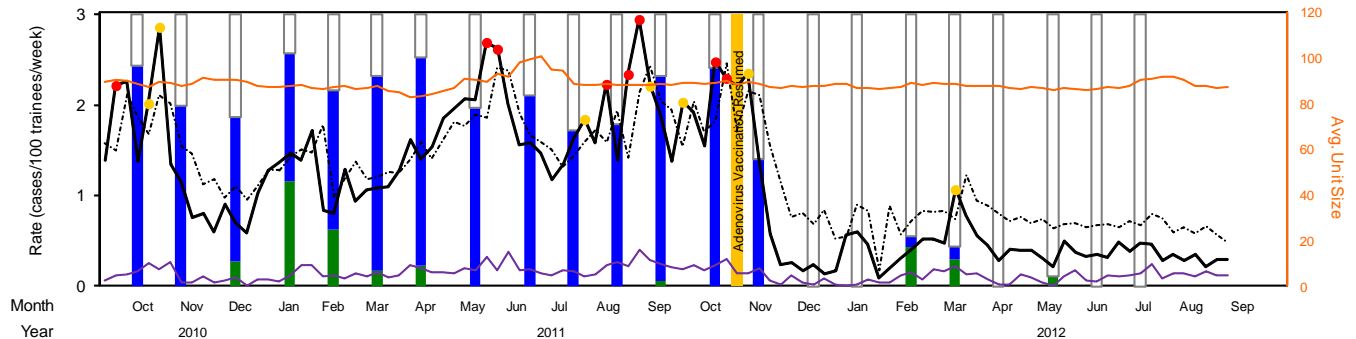
Ft. Leonard Wood FRI Rates and Diagnostic Test Results
 Shaded bars represent monthly proportions of Influenza, Adenovirus, and negative (clear) results



Month	Year	Samples Received	Adenovirus Positive	Flu Positive	AdV Subtype	Flu Subtype
Oct	2010	33	55%	3%	4	B
Nov	2010	24	67%	0%	7	H1
Dec	2010	5	60%	20%	14	H3
Jan	2011	39	3%	59%	21	pH1N1
Feb	2011	29	17%	24%	3	Untyped
Mar	2011	51	18%	16%	3	
Apr	2011	45	53%	0%	C	
May	2011	43	60%	0%		
Jun	2011	51	76%	0%		
Jul	2011	39	79%	0%		
Aug	2011	27	67%	0%		
Sep	2011	31	77%	0%		
Oct	2011	10	20%	0%		
Nov	2011	13	54%	0%		
Dec	2011	8	75%	0%		
Jan	2012	8	13%	13%		
Feb	2012	4	0%	25%		
Mar	2012	12	0%	8%		
Apr	2012	7	0%	0%		
May	2012	5	0%	0%		
Jun	2012	1	0%	0%		
Jul	2012	1	0%	0%		
Aug	2012	1	0%	0%		
Sep	2012	1	0%	0%		

[Back to FRI Report](#)

NRTC GreatLakes FRI Rates and Diagnostic Test Results
 Shaded bars represent monthly proportions of Influenza, Adenovirus, and negative (clear) results

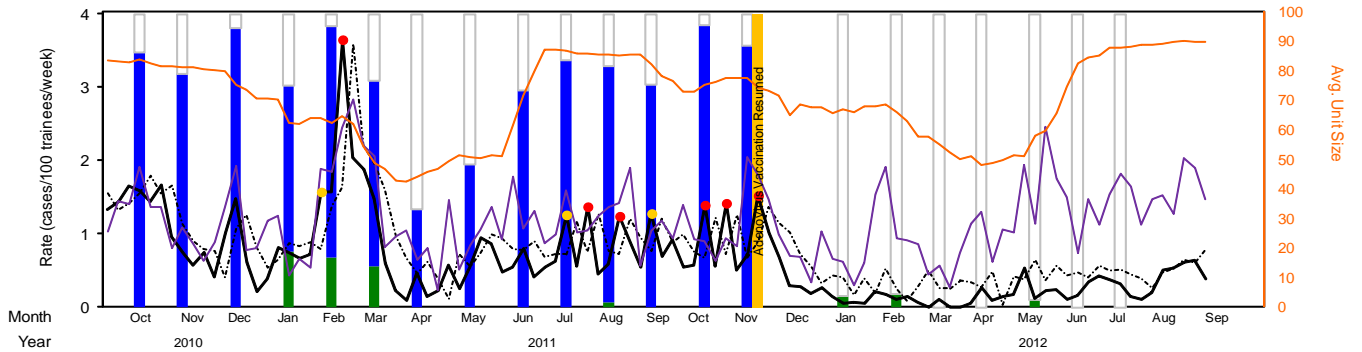


Month	Year	Samples Received	Adenovirus Positive	Flu Positive	AdV Subtype	Flu Subtype
Oct	2010	58	81%	0%	4	B
Nov	2010	15	67%	0%	7	H1
Dec	2010	32	53%	9%	14	H3
Jan	2011	49	47%	39%	21	pH1N1
Feb	2011	43	51%	21%	3	Untyped
Mar	2011	49	71%	6%	C	
Apr	2011	38	76%	8%		
May	2011	35	66%	0%		
Jun	2011	47	70%	0%		
Jul	2011	47	57%	0%		
Aug	2011	62	60%	0%		
Sep	2011	44	75%	2%		
Oct	2011	36	81%	0%		
Nov	2011	17	47%	0%		
Dec	2011	5	0%	0%		
Jan	2012	24	0%	0%		
Feb	2012	27	4%	15%		
Mar	2012	40	5%	10%		
Apr	2012	23	0%	0%		
May	2012	27	0%	4%		
Jun	2012	19	0%	0%		
Jul	2012	16	0%	0%		
Aug	2012	16	0%	0%		
Sep	2012	16	0%	0%		

[Back to FRI Report](#)

— At or below expected value (expected = dashed line) ● Moderately elevated ● Substantially elevated — Pneumonia rate (incl. afebrile)

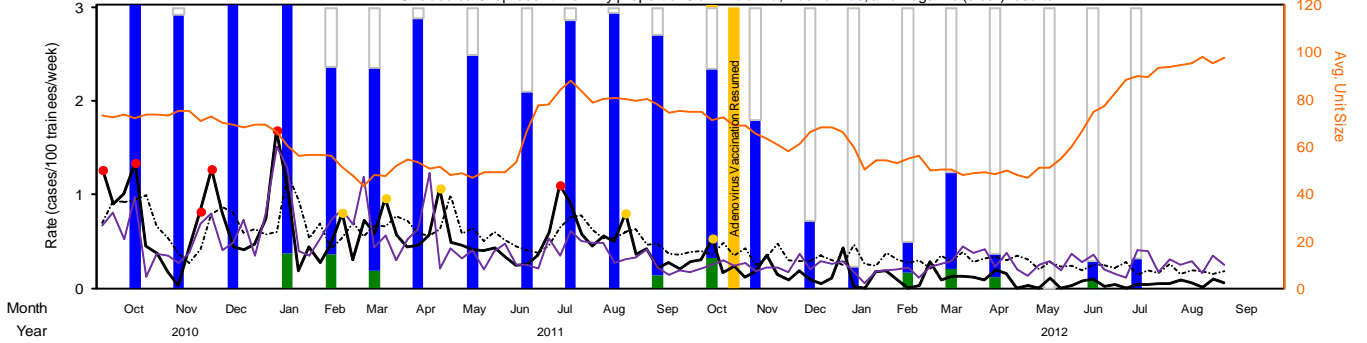
MCRD San Diego FRI Rates and Diagnostic Test Results
 Shaded bars represent monthly proportions of Influenza, Adenovirus, and negative (clear) results



Samples Received	69	49	41	53	71	44	36	37	46	64	68	62	53	56	0	29	24	17	27	44	39	39	
Adenovirus Positive	87%	80%	95%	57%	79%	64%	33%	49%	74%	84%	81%	76%	96%	89%	0%	0%	0%	0%	0%	0%	0%	0%	0%
Flu Positive	0%	0%	0%	19%	17%	14%	0%	0%	0%	0%	1%	0%	0%	0%	0%	3%	4%	0%	0%	2%	0%	0%	
AdV Subtype	4	98%	97%	97%	80%	79%	89%	92%	72%	65%	72%	75%	79%	88%	98%								
	7																						
	14				17%	7%		6%	24%	20%	13%												
	21																						
	3	2%	3%	3%	3%	13%	11%	8%	17%	12%	7%	13%	21%	12%									
C					2%		6%							2%									
Flu Subtype	B				8%	33%					100%						100%		100%				
	H1																						
	H3				90%	8%																	
	pH1N1				10%	83%	67%																
	Untyped																						

[Back to FRI Report](#)

MCRD Parris Island FRI Rates and Diagnostic Test Results
 Shaded bars represent monthly proportions of Influenza, Adenovirus, and negative (clear) results

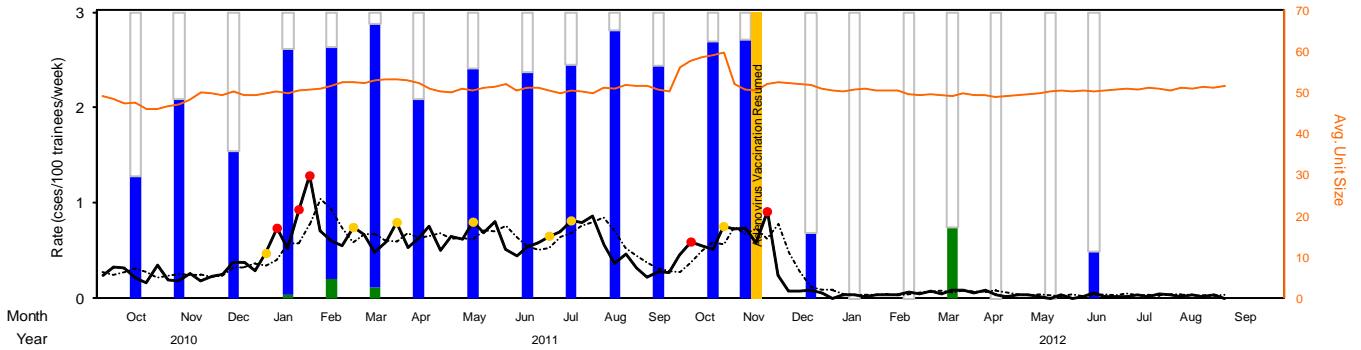


Samples Received	45	39	38	63	57	47	53	36	40	66	58	42	37	25	25	13	18	29	24	13	31	37	
Adenovirus Positive	100%	97%	100%	98%	67%	72%	96%	83%	70%	95%	98%	86%	68%	60%	24%	8%	11%	34%	8%	0%	6%	11%	
Flu Positive	0%	0%	0%	13%	12%	6%	0%	0%	0%	0%	5%	11%	0%	0%	0%	6%	7%	4%	0%	0%	3%	0%	
AdV Subtype	4	64%	39%	33%	42%	79%	82%	55%	93%	71%	83%	72%	81%	84%	67%	17%							
	7																						
	14	36%	61%	65%	58%	21%	15%	41%	7%	29%	16%	23%	14%	16%	33%	50%	100%	100%	100%	50%		50%	100%
	21											2%	2%	6%									
	3					3%	4%				2%	4%				33%							
C			3%																50%		50%		
Flu Subtype	B				13%							100%	100%					100%					
	H1																						
	H3				25%	57%																	
	pH1N1				63%	43%	100%											100%		100%		100%	
	Untyped																						

[Back to FRI Report](#)

— At or below expected value (expected = dashed line) ● Moderately elevated ● Substantially elevated — Pneumonia rate (incl. afebrile)

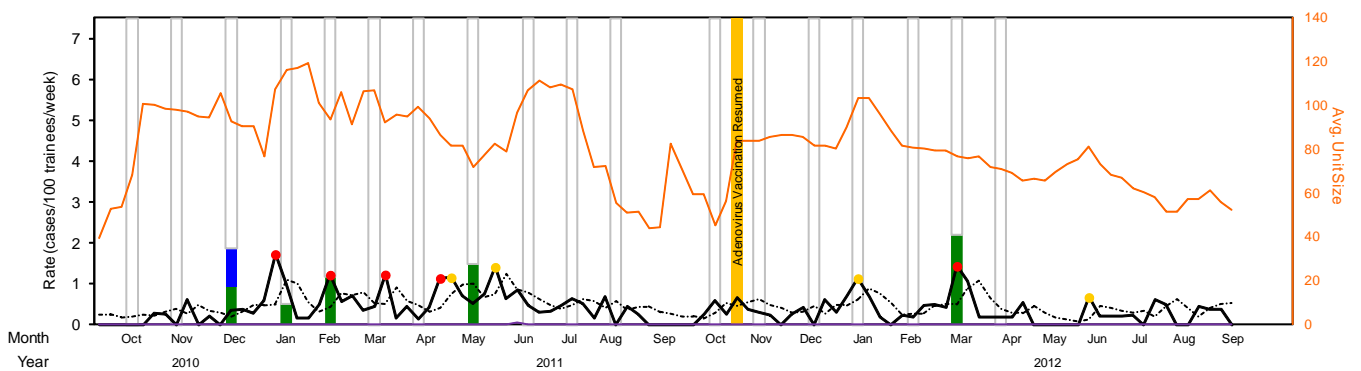
Lackland AFB FRI Rates and Diagnostic Test Results
 Shaded bars represent monthly proportions of Influenza, Adenovirus, and negative (clear) results



Month	Year	Adenovirus Positive	Influenza Positive	Negative	Adenovirus Subtype	Influenza Subtype
Oct	2010	21	43%	0%	4	
Nov	2010	23	70%	0%	7	
Dec	2010	35	51%	0%	14	
Jan	2011	62	85%	2%	21	
Feb	2011	58	81%	7%	3	100%
Mar	2011	48	92%	4%	3	50%
Apr	2011	43	70%	0%	C	100%
May	2011	46	80%	0%		
Jun	2011	53	79%	0%		
Jul	2011	60	82%	0%		
Aug	2011	31	94%	0%		
Sep	2011	43	81%	0%		
Oct	2011	58	90%	0%		
Nov	2011	52	90%	0%		
Dec	2011	13	23%	0%		
Jan	2012	6	0%	0%		
Feb	2012	1	0%	0%		
Mar	2012	16	0%	25%		100%
Apr	2012	7	0%	0%		
May	2012	7	0%	0%		
Jun	2012	6	17%	0%		
Jul	2012	0	-	-		
Aug	2012	0	-	-		
Sep	2012	0	-	-		

[Back to FRI Report](#)

CGTC Cape May FRI Rates and Diagnostic Test Results
 Shaded bars represent monthly proportions of Influenza, Adenovirus, and negative (clear) results



Month	Year	Adenovirus Positive	Influenza Positive	Negative	Adenovirus Subtype	Influenza Subtype
Oct	2010	1	0%	0%	4	
Nov	2010	4	0%	0%	7	
Dec	2010	8	13%	0%	14	
Jan	2011	14	0%	7%	21	
Feb	2011	19	0%	16%	3	67%
Mar	2011	11	0%	0%	C	100%
Apr	2011	16	0%	0%		
May	2011	5	0%	20%		100%
Jun	2011	12	0%	0%		
Jul	2011	11	0%	0%		
Aug	2011	7	0%	0%		
Sep	2011	0	0%	0%		
Oct	2011	6	0%	0%		
Nov	2011	4	0%	0%		
Dec	2011	2	0%	0%		
Jan	2012	7	0%	0%		
Feb	2012	5	0%	0%		
Mar	2012	17	0%	29%		100%
Apr	2012	2	0%	0%		
May	2012	0	0%	0%		
Jun	2012	0	0%	0%		
Jul	2012	0	0%	0%		
Aug	2012	0	0%	0%		
Sep	2012	0	0%	0%		

[Back to FRI Report](#)

- At or below expected value (expected = dashed line) ● Moderately elevated ● Substantially elevated — Pneumonia rate (incl. afebrile)