



# CONGRESSMAN JEB HENSARLING'S GUIDE TO VISITING WASHINGTON D.C.





As your Representative in Congress, I am pleased to provide you with this comprehensive guide to Washington D.C. It includes information about many attractions around the city to help you plan your visit. There are several tours my office can help arrange for you, but available space on many tours is limited, particularly during the summer months. Make sure to plan in advance and contact my office as soon as possible if we can assist you in any way. I hope that you have an enjoyable and enriching experience in Washington, D.C.

Yours respectfully,

---

### About the Congressman

#### **Biography**

- Life-long conservative dedicated to advancing the principles of faith, family, free enterprise, and freedom.
- Outspoken advocate for limited government and unlimited opportunity.
- Fights to cut wasteful Washington spending, remove barriers to job growth, defend families, strengthen our homeland security, and support our troops.
- National voice for conservative principles.
  - “Truth teller” & “Has become one of the most important GOP members of Congress” (*Dallas Morning News*)
  - “Not been afraid to push Republican leaders to take more conservative positions” (*2010 Almanac of American Politics*)
  - “Conservative Leader” & “Leading the GOP Vanguard Against the Bailout” (*New York Times*)
  - “Rep. Budget Reform” (*National Review Online*)

#### **Leadership in Congress**

- Serves as Chairman of the House Republican Conference, the fourth highest ranking position in the Republican leadership.
- Serves as Vice-Chairman of the House Financial Services Committee and as a leader on consumer choice, competitive markets, and smart regulation in our financial markets.
- Served as former Chairman of the Republican Study Committee, fighting for conservative principles in the House.
- As former member of the President’s Debt Commission, demanded spending cuts to solve our spending-driven debt crisis.
- Served on the Congressional Oversight Panel for TARP, provided tough oversight and accountability on the Obama Administration’s use of Wall Street bailout funds.

#### **Cutting Wasteful Washington Spending**

- Voted to repeal the government takeover of health care, which would cut new spending by \$2.6 trillion over ten years and reduce the deficit by \$700 billion. Helped lead the effort to reform earmarking, which led to an earmark ban enacted by the House of Representatives.
- Co-authored the "Spending, Deficit, and Debt Control Act", a landmark budget reform bill that was heralded as the "Gold Standard" of budget enforcement legislation by a coalition of conservative groups, including the Americans for Tax Reform, Citizens Against Government Waste, Citizens for a Sound Economy, and the National Taxpayers Union.
- Authored the “Spending Limit Amendment”- a Constitutional amendment that would limit spending to no more than 20% of the economy (the historic average since WWII).

#### **Fighting for Lower Taxes and More Economic Growth**

- Authored the “Taxpayer Bill of Rights”- laid the foundation for a more efficient, common sense budget and tax system in Washington.
- Co-authored the Taxpayer Choice Act- a comprehensive, individual income tax reform initiative that would eliminate massive future tax increases by repealing the Alternative Minimum Tax,

and provide individuals with a modern alternative tax system that is transparent, simple, and efficient.

- Co-authored the Economic Growth Act of 2008- provided broad, growth-oriented, permanent incentives for economic activity across all sectors and industries.

#### **Ending Bailouts**

- Authored “The GSE Bailout Elimination and Taxpayer Protection Act”- legislation to end taxpayer-funded bailouts of Fannie Mae and Freddie Mac, putting them on the path to market competition.
- Spearheaded efforts to find a taxpayer-friendly alternative to the \$700 billion bailout for banks on Wall Street that held troubled mortgage-related assets.
- Co-authored legislation that would end taxpayer-funded bailouts and “Too Big to Fail”.

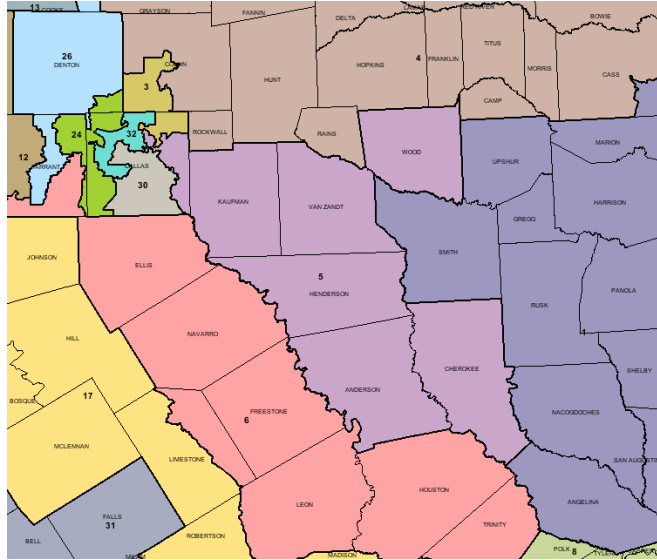
#### **Awards and Rankings (As of the end of the 111th Congress)**

- 100% lifetime rating from Club for Growth- 1 of only 2 members out of the entire House of Representatives with this distinction since the ratings began.
- 100% lifetime rating from the National Right to Life Committee.
- 100% rating from the Family Research Council (111<sup>th</sup> & 110<sup>th</sup> Congresses).
- ‘A’ lifetime rating from the National Rifle Association.
- 99% lifetime rating from the American Conservative Union.
- 100% rating from Freedom Works (110<sup>th</sup> Congress).
- 96% lifetime rating from the Council for Citizens Against Government Waste & one of only 7 members to achieve “Taxpayer Super Hero” status with a 100% score for the 111<sup>th</sup> Congress (First Session).
- Agenda to cut spending named the #1 or #2 most taxpayer-friendly in each Congress he has served by the National Taxpayers Union.

#### **Personal Background**

- Born in Stephenville, Texas and grew up working on his father's farm near College Station.
- Active student leader at Texas A&M University, where he earned his Bachelor's degree in Economics in 1979. Later, he went on to earn a law degree from the University of Texas in 1982.
- Spent ten years in the private sector, serving as an officer for a successful investment firm, a data management company, and an electricity retail company.
- Served on the staff of Senator Phil Gramm for many years.
- An Eagle Scout who is actively involved in his community- served as a leader with the American Cancer Society of Dallas and a board member for the Children's Education Fund.
- Jeb and his wife Melissa are members of St. Michael and All Angels Church and reside in Dallas with their two children, Claire and Travis.

## The 5<sup>th</sup> District



The Fifth District takes in Dallas neighborhoods such as Lake Highlands, Lakewood, and White Rock Lake. Much of East Dallas and a significant portion of Garland are located within the Fifth District, as well as all of Mesquite, Seagoville and Sunnyvale.

The Fifth District is home to an expanse of six rural counties that sweep through East Texas. These counties include: Kaufman, Henderson, Anderson, Van Zandt, Wood and Cherokee counties.

The Dallas County portion of the Fifth District is also home to the beautiful White Rock Lake, some of the finest schools in Texas, and thousands of special events like the annual Mesquite Championship Rodeo.

These rural areas and small towns are home to events like the Canton First Monday Trade Days, hundreds of cow-calf operations, thousands of small businesses and some of the richest history that Texas has to offer.

### Office Contact Information

Washington D.C.  
129 Cannon Building  
Washington, D.C. 20515  
Phone: 202-225-3484  
Fax: 202-226-4888

Dallas  
6510 Abrams Rd, #243  
Dallas, TX 75231  
Phone: 214-349-9996  
Fax: 214-349-0738

Athens  
810 East Corsicana St., Suite C  
Athens, TX 75751  
Phone: 903-675-8288  
Fax: 903-675-8351

Website: [www.house.gov/hensarling](http://www.house.gov/hensarling)

## Table of Contents

<b>Navigating Washington, D.C</b> _____	<b>5</b>
<b>Washington Weather</b> _____	<b>6</b>
<b>Here's Where We Can Help</b> _____	<b>6</b>
<b>Public Tours</b> _____	<b>9</b>
<b>Monuments ...</b>	<b>9</b>
<b>Government Buildings ...</b>	<b>11</b>
<b>Capitol Hill ...</b>	<b>12</b>
<b>Historic Sites ...</b>	<b>12</b>
<b>Museums &amp; Galleries ...</b>	<b>14</b>
<b>Parks ...</b>	<b>20</b>
<b>Washington Sports Teams</b> _____	<b>20</b>
<b>Where to Eat in D.C.</b> _____	<b>21</b>
<b>Accommodations</b> _____	<b>22</b>

## Navigating Washington, D.C

### **Overview**

Washington, DC is divided into four quadrants - NW, NE, SW, SE. When traveling through the city, note which quadrant your destination is in because the lack of this crucial detail could result in a great deal of confusion. Because streets cross over into multiple quadrants, an address can be duplicated in each.

### **The Metro and Bus Systems**

Washington has an underground transportation system, the Metro, which can transport you to almost all the major attractions, Washington Reagan National Airport, and additional locations for a reasonable fare. Trains arrive in each Metro station frequently during rush hours (5-9:30 a.m. and 3-7 p.m.) and less frequently, approximately every 10 minutes, the rest of the day. The bus system is another inexpensive and dependable form of transportation. For information on Metro schedules, routes, or fares, please refer to their website.

#### Contact:

(202) 637-7000

[http://www.wmata.com/getting\\_around/visitor\\_info/](http://www.wmata.com/getting_around/visitor_info/)

### **Taxis**

Washington, D.C. taxi companies use a meter system (which you will also find in Virginia and Maryland taxis). The rates are the same for all taxis D.C. at \$3.00 for the first 1/6<sup>th</sup> of a mile and \$0.25 for every 1/6<sup>th</sup> of a mile thereafter. Finding a taxi is fairly easy at major intersections or hotels, but should you need to arrange for one the companies below can be of assistance. The website below has additional information should you need it.

#### Contact:

[www.dctaxi.dc.gov](http://www.dctaxi.dc.gov)

ABC Cab	(202) 398-0533	Diamond Cab	(202) 387-2221
Liberty Cab	(202) 398-0505	Yellow Cab of DC	(202) 546-7900

### **Monument Tours**

*The Old Town Trolley*

#### Hours:

Summer: 9:00 a.m. – 5:30 p.m. (daily)

#### Prices:

Adult (age 13 and over) – \$35 (\$31.50 online)

Child (age 4 to 12) – \$18 (\$16.20 online)

Child (age 3 and under) – Free (Free online)

#### Contact:

(202) 832-9800

[www.oldtowntrolley.com](http://www.oldtowntrolley.com)

*Tourmobile*

#### Hours:

Daily: 9:30 a.m. – 4:30 p.m.

#### Prices:

Adult (age 12 and over) – \$27

Child (age 3 to 11) – \$13

Child (age 2 and under) – Free

#### Contact:

(202) 554-5100

[www.tourmobile.com](http://www.tourmobile.com)

## Washington Weather

\*For more information see [www.weather.com](http://www.weather.com)\*

Month	Avg. Low	Avg. High	Ave Precipitation
Jan	35°	42°	2.7 in
Feb	29°	45°	2.7 in
March	37°	56°	3.2 in
April	46°	66°	2.7 in
May	56°	76°	3.7 in
June	66°	84°	3.4 in

Month	Avg. Low	Avg. High	Ave Precipitation
July	71°	88°	3.8 in
Aug	70°	86°	3.9 in
Sept	62°	80°	3.3 in
Oct	50°	69°	3.0 in
Nov	41°	58°	3.1 in
Dec	31°	47°	3.1 in

## Tours Available Through Congressman Hensarling's Office

The tourist sites of Washington, D.C. are always busy, and tours of the following sites are often hard to secure. Though we might not be successful, we will do everything we can to try to procure a congressional tour of the below sites. Please contact our office as far in advance as possible so we can start working on tour reservations for you.

### **United States Capitol**

Under this splendid white dome, Senators and Representatives collaborate to develop and refine U.S. legislative policy. Personalized, staff-led tours are provided for 5<sup>th</sup> district constituents by Congressman Hensarling's staff. Please give as much advanced notice as possible to ensure that there is availability.

Staff-led Tour Hours: Mon – Fri; 9 a.m. – 4:30 p.m.

Metro: Capitol South



### **The White House**

The White House, constructed with white-painted Aquia sandstone beginning in 1792, has been the home and principal workplace of every U.S. president except George Washington. A limited number of tours, secured through congressional offices, are available each day. Tour requests must be submitted months in advance.

Hours: Tues – Thurs 7:30 a.m. – 11:00 a.m.

Friday 7:30 a.m. – 12:00 p.m.

Saturday 7:30 a.m. – 1:00 p.m.

Metro: McPherson Square

Contact: (202) 456-7041

[www.whitehouse.gov](http://www.whitehouse.gov)

### **National Archives and Records Administration**

The National Archives houses the 1%-3% of our nation's documents that are kept forever including the United States Constitution, the Declaration of Independence, the Bill of Rights, and extensive genealogical and census files.

Hours: March 15 - Labor Day 10 a.m. – 7 p.m.

Day after Labor Day - March 14 10 a.m. – 5:30 p.m.

Admission: Free

Metro: Archives-Navy Memorial

Contact: 7<sup>th</sup> Street and Pennsylvania Avenue, NW

Washington, DC 20408

1-866-272-6272

[www.Archives.gov](http://www.Archives.gov)

### **United States Supreme Court**

The Supreme Court, established in 1789, is the highest court in the nation with judicial review given to itself in the 1803 Marbury v. Madison case, receiving roughly 8,000 petitions each term to hear individual cases.

Hours: Mon – Fri; 9 a.m. – 4:30 p.m.

Lectures: when in session; 2:00 p.m.

Metro: Capitol South

Location: 1<sup>st</sup> Street & Maryland Ave, NE  
Washington, DC 20543  
(202) 479-3211  
[www.SupremeCourt.gov](http://www.SupremeCourt.gov)



### **Library of Congress**

This three building complex is the world's largest library containing over 30 million cataloged books, 1 million government publications, 58 million manuscripts, 33,000 bound newspapers, 1 million world newspapers, and much more. It is the research arm of the U.S. Congress.

Hours: Mon – Sat 8:30 a.m. – 4:30 p.m.

Tours: public tours; 10:30 a.m., 11:30 a.m., 1:30 p.m., 2:30 p.m., \*3:30 p.m. (\*Mon – Fri)  
Congressional tours; 8:30 a.m., 1:45 p.m., 3:45 p.m.

Metro: Capitol South

Location: 101 Independence Ave, SE  
Washington, DC 20540  
(202) 707-9779  
[www.LOC.gov](http://www.LOC.gov)



### **Bureau of Engraving and Printing**

The largest producer of security documents in the United States, this is where more than 20 billion postage stamps and 9 billion Federal Reserve Notes are produced yearly.

Hours: Monday - Friday (various times throughout the day)

Admission: Ticket required during the summer on a limited, first-come, first-served beginning at 8 a.m.. Advance tickets not available except Sept – Feb. Tours run approx. every 15 minutes throughout the year.

Metro: Smithsonian

Location: 14<sup>th</sup> Street and C Street, SW  
Washington, DC 20228  
(202) 874-2330  
[www.MoneyFactory.com](http://www.MoneyFactory.com)



### **The Pentagon**

The Pentagon is one of the largest office buildings in the world and is home to the U.S. Department of Defense. Constructed during World War II, the building covers 3,705,793 square feet and houses approximately 23,000 employees.

Tours: Mon – Fri; 9 a.m. – 3 p.m.

Admission: Group tours (10 to 45 people) available to schools, educational groups, and other various groups by reservation only. Other tours can be arranged through our office.

Metro: Pentagon

Information: <http://pentagon.afis.osd.mil/>

### **Department of State**

If successful in procuring a tour, visitors enjoy viewing the Diplomatic Reception Rooms, which holds an elegant array of 18th Century American art.

Tours: Mon – Fri; 9:30 a.m., 10:30 a.m., 2:45 p.m.

Admission: Reservations required and should be made 90 days in advance Tour guests are required to arrive at the 23rd street entrance (23rd street NW- between C and D streets) at least 30 minutes prior to their scheduled tour with a photo ID. Children under the age of 12 are not encouraged to participate in this tour.

Metro: Foggy Bottom

Location: 2201 C Street, NW  
Washington, DC 20520  
[www.State.gov](http://www.State.gov)

### **Washington National Cathedral**

In addition to the 14<sup>th</sup> century Gothic Cathedral, visitors can enjoy shops, gardens, and an observation gallery offering spectacular views of the city.



Hours: Mon, Wed 9:00 a.m.  
Metro: Dupont Circle  
Location: 3101 Wisconsin Ave, NW  
Washington, DC 20016  
(202) 537-6200  
<http://www.nationalcathedral.org/>

### **Treasury Building**

The Treasury Building, originally an executive department of the First Session of Congress in 1789, is home to the Secretary of the Treasury.

Metro: McPherson Square  
Tours: Saturdays; 9:00am, 9:45am, 10:30am, 11:15am  
Admission: Tours must be scheduled through a congressional office.  
Location: 15<sup>th</sup> Street and Hamilton Place, NW  
Washington DC 20502  
<http://www.ustreas.gov/education/tour/>

### **John F. Kennedy Center for the Performing Arts**

The Kennedy Center offers a wide variety of performances along with gift shops, restaurants, and private reception spaces. In addition, visitors can explore the Hall of States, the Hall of Nations, and the Center's main theaters.

Guided Tours: (free)

Mon – Fri 10 a.m. – 5 p.m.

Sat – Sun 10 a.m. – 1 p.m.

Admission: Free performances every day at 6 p.m. on the Millennium Stage.

Metro: Foggy Bottom – GWU (Take the free Show Shuttle to and from the Center after 9:45 a.m. on weekdays.)

Location: 2700 F Street, NW  
Washington, DC 20566  
(202) 416-8340  
[www.Kennedy-Center.org](http://www.Kennedy-Center.org)



**\*\* If you would like the office to help you book any of the above tours please visit the following website to \*\*  
fill out a tour request form**

[http://www.house.gov/hensarling/serv\\_tours\\_form.shtml](http://www.house.gov/hensarling/serv_tours_form.shtml)

---

## Public Tours Without Congressional Reservations

There are very interesting sites around D.C. that, unfortunately, do not provide Congressional tours. These sites are open to the public though, and here is some information that will help you schedule them into your visit.

### Monuments

#### **Washington Monument**

This monument is among the world's tallest masonry structures, standing at 555 feet. Construction began in 1848 and was completed in 1884. It was dedicated to the memory of the first U.S. President in 1885.

Daily Hours: Memorial Day – Labor Day 9 a.m. – 10 p.m.  
Other times 9 a.m. – 5 p.m.

Admission: Free; timed passes required. Advance tickets available  
(<http://www.nps.gov/wamo/planyourvisit/feesandreservations.htm> or by calling

1-877-444-6777)

Metro: Smithsonian



Contact: 15th & Constitution Avenue, NW  
Washington, DC 20001  
(202) 426-6841  
[www.NPS.gov/wamo](http://www.NPS.gov/wamo)

### **Lincoln Memorial**

The Memorial is in the form of a Greek Doric Temple and contains a 19 ft. seated sculpture of Lincoln and two well-known speeches that he made. This monument has been the site of several famous speeches, included Martin Luther Kings “I Have a Dream” speech delivered August 28, 1963.

Hours: 24 hours with park ranger present from 9:30 a.m. – 10:30 p.m.

Metro: Smithsonian

Contact: W. Potomac Park at 23<sup>rd</sup> Street, NW  
Washington, DC  
(202) 426-6841  
[www.NPS.gov/linc](http://www.NPS.gov/linc)



### **Franklin Delano Roosevelt Memorial**

Dedicated on May 2, 1997, this memorial spreads over 7.5 acres and traces 12 years of American History spread throughout 4 rooms, one room for each year Roosevelt was president. It boasts various sculptures depicting President and Mrs. Franklin Delano Roosevelt during events of the Great Depression and World War II. Because of President Roosevelt’s disabilities, the designers intended to create a structure that would be accessible to those with physical impairments.

Daily Hours: 24 hours with park rangers present from 9:30 a.m. – 11:30 a.m.

Metro: Smithsonian (3/4 of a mile walk)

Contact: 1850 West Basin Drive, SW  
Washington, DC 20024  
(202) 426-6841  
[www.NPS.gov/fdre](http://www.NPS.gov/fdre)

### **Jefferson Memorial**

The 19-foot bronze statue of one of our founding fathers and our third U.S. president stands in the center of a circular colonnade covered by a shallow dome. The marble is inscribed with passages from the Declaration of Independence and other famous Jeffersonian writings.

Daily Hours: 24 hours with park rangers present from 9:30 a.m. – 11:30 p.m.

Metro: Smithsonian (just under a mile walk)

Contact: Tidal Basin, South End of 15th Street, SW  
Washington, DC  
(202) 426-6841  
[www.NPS.gov/thje](http://www.NPS.gov/thje)



### **Arlington National Cemetery**

Not originally intended to be a national cemetery when construction began in 1802, Arlington Cemetery is the home of Arlington House, a 19th-century mansion, amid the more than 250,000 military grave sites that stretch out around it. Every hour on the hour during winter months and every half hour during the summer months visitors have the opportunity to see The Changing of the Guard at the Tomb of the Unknown Soldier.

Daily Hours:

April 1 – Sept 30 8 a.m. – 7 p.m.

Oct 1 – March 31 8 a.m. – 5 p.m.

Metro: Arlington Cemetery \*Paid parking is available\*

Contact: Memorial Dr  
Arlington, VA  
(703) 607-8000  
[www.ArlingtonCemetery.org](http://www.ArlingtonCemetery.org)



### **Vietnam Veterans Memorial and The Woman’s Vietnam Veteran’s Memorial**

This controversial memorial currently consists of three parts: the Three Soldier statue, the Vietnam Women's Memorial, and the Memorial wall, which is inscribed with the names of 58,229 people missing or killed in the Vietnam War. Congress created the Vietnam Woman's Memorial Project on November 15, 1988, for the purpose of honoring women of the Armed Forces who served during the Vietnam era.

Daily Hours: 24 hours with park rangers present from 9:30 a.m. – 11:30 p.m.

Metro: Smithsonian

Contact: 21st & Constitution Avenue, NW  
Washington, DC 20001  
(202) 426-6841  
<http://www.nps.gov/vive/>

### **The United States Navy Memorial**

The memorial, honoring those who have served or are currently serving in the Navy, Marine Corp., Coast Guard, and Merchant Marines, was authorized by Congress in 1980 and holds a 100 foot diameter granite map of the world surrounded by sculptural depictions of events in Naval history.

Hours: 9:30 a.m. – 5:30 p.m.

Metro: Archives-Navy Memorial

Contact: 7<sup>th</sup> Street and Pennsylvania Ave, NW  
Washington, DC  
(202) 737-2300  
[www.navy Memorial.org](http://www.navy Memorial.org)

### **U.S. Marine Corps War Memorial**

This memorial is dedicated to all personnel of the United States Marine Corps who have died in the defense of their country since 1775.

Daily Hours: 24 hours

Metro: Rosslyn

Contact: Marshall Dr. between Route 50 and Arlington National Cemetery  
Arlington, VA  
(703) 289-2500  
<http://www.nps.gov/gwmp/marinecorpswarmemorial.htm>

### **Korean War Memorial**

This memorial was dedicated, to the men and women who fought and died in the Korean War from 1950 to 1953, by President George H.W. Bush on July 27, 1995, the 42<sup>nd</sup> anniversary of the armistice that ended the war.

Daily Hours: 24 hours with park rangers present from 9:30 a.m. – 11:30 p.m.

Metro: Foggy Bottom

Contact: At the foot of the Lincoln Memorial  
Washington, DC  
(202) 426-6841  
<http://www.nps.gov/kowa/>



### *Government Buildings*

#### **Voice of America**

Voice of America is a U.S. government radio network that broadcasts more than 1,000 hours of news and cultural programming in over 44 languages each week around the world.

Tours: Mon – Fri 12 p.m. – 3 p.m. (reservations required)

Metro: Federal Center SW

Contact: 330 Independence Ave, SW  
Washington, DC 20237  
(202) 203-4990  
<http://author.voanews.com/english/about/visitvoa.cfm>

#### **National Aquarium**

The nation's first public aquarium is the watering hole for over 1200 specimens of marine life.

Daily Hours: 9 a.m. – 5 p.m.

Admission:

General Admission – \$9

Seniors – \$8

Children (ages 2 to 10) – \$4

Children (2 and under) – Free

Metro: Federal Triangle

Contact: Dept. of Commerce Building, Room B-077  
14<sup>th</sup> Street and Constitution Ave, NW  
Washington, DC 20230  
(202) 482-2825  
[www.NationalAquarium.com](http://www.NationalAquarium.com)

Capitol Hill

**Senate Office Buildings**

The Senate Office Buildings, Russell, Dirksen, and Hart, are located on the north side of the Capitol grounds on Constitution Avenue. These buildings contain the offices of all 100 Senators and the 21 standing committees of the Senate. These buildings are also open to the public.

Metro: Union Station

Contact: Constitution Avenue  
Washington, DC 20515  
(202) 224-3121  
[www.Senate.gov](http://www.Senate.gov)

**United States Botanic Gardens**

This living museum holds permanent collections of tropical, subtropical, and desert plants.

Daily Hours: 10 a.m. – 5 p.m.

Metro: Federal Center SW

Contact: 245 First Street, SW  
Washington, DC 20024  
(202) 225-8333  
[www.USBG.gov](http://www.USBG.gov)



Historic Sites

**Mount Vernon Estate and Garden**

This estate, located on the banks of the Potomac River, was the magnificent plantation home to our first president.

Admission:

Adults – \$15.00

Seniors ages 62+ – \$14.00

Youth ages 6-11 – \$7.00

Children under 6 – Free

Hours:

April – August 8 a.m. – 5 p.m.

March, Sep, Oct 9 a.m. – 5 p.m.

Nov – February 9 a.m. – 4 p.m.

Contact: George Washington Parkway  
Mount Vernon, VA 22121  
(703) 780-2000  
[www.MountVernon.org](http://www.MountVernon.org)



**Union Station**

This working train station, visited by approximately 32 million people a year, has been superbly restored and contains over 100 eating and shopping establishments, a nine screen cinema, an international money exchange, and an Amtrak ticket counter.

Store Hours: \*Restaurant hours vary\*

Mon – Sat 10 a.m. – 9 p.m.

Sun 12 p.m. – 6 p.m.

Metro: Union Station

Contact: 40 Massachusetts Avenue, NE  
Washington, DC 20002  
(202) 289-1908  
[www.UnionStationDC.com](http://www.UnionStationDC.com)

### **Old Post Office Pavilion**

This former post office offers shops, restaurants, and a dramatic view of DC from a 315 ft tower.

Store Hours:

Mon – Fri 10 a.m. – 8 p.m.

Sat – Sun 12 p.m. – 7 p.m.

Tower Tours:

Mon – Sat 9 a.m. – 7:45 p.m. (Summer)

Sun 10 a.m. – 5:45 p.m.

Admission: Free

Metro: Federal Triangle

Contact: 1100 Pennsylvania Avenue, NW  
Washington, DC 20004  
(202) 289-4225  
[www.OldPostOfficeDC.com](http://www.OldPostOfficeDC.com)



### **Gunston Hall**

Located on a 550 acre National Historic Landmark, The 1750's colonial plantation home of George Mason, father of the Bill of Rights, is famous for both architectural beauty and historical significance.

Daily Hours: 9:30 a.m. – 5:30 p.m.

Admission: (visit website for discounts)

Adults – \$9

Students – \$5

Seniors (60+) - \$8

Young Children – Free

Contact: 10709 Gunston Road  
Mason Neck, VA 22079  
(703) 550-9220  
[www.GunstonHall.org](http://www.GunstonHall.org)

### **Congressional Cemetery**

The nation's first cemetery, which dates back to 1807, is the final resting place for many distinguished Americans, including 19 Senators and 71 Representatives, and contains a large collection of Victorian statuary, 120 of which honor those Representatives who have died while serving in Congress.

Hours: daily from dawn to dusk

Admission: Free; contribution requested. Appointment required for Guided tours.

Metro: Stadium-Armory

Contact: 1801 E Street, SE  
Washington, DC 20003  
(202) 543-0539  
[www.CongressionalCemetery.org](http://www.CongressionalCemetery.org)

### **Old Stone House**

This colonial home, the oldest house in D.C., displays 18<sup>th</sup> century living and a beautiful flower garden.

Tours: Wed – Sun; 12 p.m. – 5 p.m. (summer) \*Closed all federal holidays\*

Metro: Foggy Bottom (then take bus or cab)  
Contact: 3051 M Street, NW  
Washington, DC 20007  
(202) 426-6851  
[www.NPS.gov/olst](http://www.NPS.gov/olst)



### **Georgetown**

This European-like, historic neighborhood is home to many restaurants and shops..

#### Visitor Center Hours:

Mon – Sat 9 a.m. – 5 p.m.

Sun 1 p.m. – 5 p.m.

Metro: Foggy Bottom (then take bus)

Contact: 3242 M St. NW (Visitor Center)  
Washington, DC 20007  
(202) 342-8190  
[www.GeorgetownDC.com](http://www.GeorgetownDC.com)



### **Old Town Alexandria**

Old Town is known as the hometown of George Washington and Robert E. Lee. Alexandria was founded in 1749 as a seaport by Scottish merchants but is now the home of a large collection of 18<sup>th</sup> and 19<sup>th</sup> century attractions.

Visitor Center Daily Hours: 9 a.m. – 5 p.m.

Metro: King Street Metro Station

Contact: 221 King St. (Visitor Center)  
Alexandria, VA  
(703) 838-4200  
[www.FunSide.com](http://www.FunSide.com)

### Museums and Galleries

#### **Smithsonian Institution Building Visitor Center - “The Castle”**

The oldest of the Smithsonian museum buildings contains the crypt of founder James Smithson, as well as theatres, interactive touch-screen programs, electronic wall maps, and much more.

Daily Hours: 8:30 a.m. – 5:30 p.m.

Metro: Smithsonian (mall exit)

Contact: 1000 Jefferson Dr., SW  
Washington, DC 20013  
(202) 633-1000  
[www.Si.edu/Visit/InfoCenter](http://www.Si.edu/Visit/InfoCenter)

#### **National Air and Space Museum**

The Smithsonian Institution's Air and Space Museum preserves the largest collection of historic aircraft and spacecraft in the world.

Daily Hours: 10 a.m. – 5:30 p.m.

Metro: Smithsonian

Contact: 4<sup>th</sup> St. and Independence Ave, SW  
Washington, DC 20560  
(202) 633-2214  
[www.NASM.Si.edu](http://www.NASM.Si.edu)



#### **National Museum of American History**

The American History Museum, built in 1964, gives visitors the chance to explore the history of science, technology, and culture in America. Highlights include the Dorothy’s red slippers from The Wizard of Oz, a collection of First Ladies’ inaugural gowns, Fonzie’s leather jacket from Happy Days, and the flag that inspired “The Star-Spangled Banner” – just to name a few.

Hours: 10 a.m. – 5:30 p.m.

Metro: Smithsonian

Contact: 14th St. and Constitution Avenue, NW  
Washington, DC 20560  
(202) 357-2700  
[www.AmericanHistory.Si.edu](http://www.AmericanHistory.Si.edu)

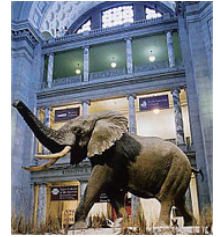
### **National Museum of Natural History**

The Natural History Museum takes a look at the natural world. Visitors have the chance to see dinosaur fossils, the world's largest elephant, the 45.5 carat Hope Diamond, and approximately 120 million additional objects.

Hours: 10 a.m. – 5:30 p.m.

Metro: Smithsonian

Contact: 10th St and Constitution Ave, NW  
Washington, DC 20560  
(202) 633-1000  
[www.MNH.Si.edu](http://www.MNH.Si.edu)



### **National Museum of American Art**

This outstanding collection includes works by more than 7,000 artists.

Hours: 11:30 a.m. – 7 p.m.

Metro: Gallery Place

Contact: 8<sup>th</sup> St. and F St. NW  
Washington, DC 20560  
(202) 633-7970  
[www.AmericanArt.Si.edu](http://www.AmericanArt.Si.edu)

### **Freer Gallery of Art**

The Freer Gallery is home to an exceptional collection of Asian art in addition to 19th and 20th-century American works of art.

Hours: 10 a.m. – 5:30 p.m.

Metro: Smithsonian

Contact: 12th St. and Jefferson Dr., SW  
Washington, DC 20013  
(202) 633-4880  
[www.Asia.Si.edu](http://www.Asia.Si.edu)

### **National Portrait Gallery**

Hours: 11:30 a.m. – 7:00 p.m.

Metro: Gallery Place

Contact: 8<sup>th</sup> St. and F St NW  
Washington, DC 20560  
(202)-633-8300  
[www.NPG.Si.edu](http://www.NPG.Si.edu)



### **Arthur M. Sackler Gallery**

Among this very distinguished collection of arts and sculptures, visitors will find rotating exhibits of Asian and eastern art is displayed.

Hours: 10 a.m. – 5:30 p.m.

Metro: Smithsonian

Contact: 1050 Independence Avenue, SW  
Washington, DC 20013  
(202) 633-4880  
[www.Asia.Si.edu](http://www.Asia.Si.edu)

### **National Museum of African Art**

The National Museum of African Art celebrates the rich visual traditions and amazingly diverse culture of Africa by offering over 80 astonishing works.

Hours: 10 a.m. – 5:30 p.m.

Metro: Smithsonian

Contact: 950 Independence Avenue, SW  
Washington, DC 20013  
(202) 633-4600

[www.NMAFA.Si.edu](http://www.NMAFA.Si.edu)



### **Arts and Industries Building -- \*\*currently closed for renovation\*\***

The oldest of the Smithsonian Buildings, the Arts and Industries building was the original home of the American History Museum. This is also the location of President James A. Garfield's inaugural ball.

Contact: [www.Si.edu/Ai](http://www.Si.edu/Ai)

### **Hirshhorn Museum and Sculpture Garden**

Comprised of a remarkable cylindrical structure and adjacent garden, this collection includes an array of 19<sup>th</sup> and 20<sup>th</sup> century sculptures and paintings.

Museum Hours: 10 a.m. – 5:30 p.m.

Sculpture Garden Hours: 7:30 a.m. – Dusk

Metro: L'Enfant Plaza

Contact: 7<sup>th</sup> St. and Independence Avenue, SW  
Washington, DC 20013  
(202) 633-4674

[www.Hirshhorn.Si.edu](http://www.Hirshhorn.Si.edu)

### **National Gallery of Art & East Wing**

This Smithsonian offers guests to opportunity to view a collection of American and European paintings, sculptures, and arts in addition to changing exhibitions from around the world.

Hours: Mon – Sat 10 a.m. – 5 p.m.

Sun 11 a.m. – 6 p.m.

Metro: Archives – Navy Memorial

Contact: 4th and Constitution Avenue, NW  
Washington, DC 20565  
(202) 737-4215

[www.NGA.gov](http://www.NGA.gov)



### **Renwick Gallery**

This gallery, originally built between 1859 and 1861, is America's first federal art collection. The gallery is named after the well-known New York architect who designed the building.

Hours: 10 a.m. – 5:30 p.m.

Metro: Farragut West

Contact: 17<sup>th</sup> St. and Pennsylvania Ave, NW  
Washington, DC 20013  
(202) 633-2850

<http://americanart.si.edu/renwick/>

### **International Spy Museum**

This museum, which focuses on human intelligence and shows the role spies have played in events throughout history, contains the largest collection of espionage artifacts on public display.

Hours: vary from week to week - please call museum for specific hours

Admission: (for all exhibits)

Adults (ages 12 to 65) – \$16

Seniors – \$15

Children (ages 5 to 11) – \$13

Children (age 4 and under) – Free

Metro: Chinatown





Contact: 800 F Street, NW  
Washington, DC 20004  
(202) 393-7798  
[www.SpyMuseum.org](http://www.SpyMuseum.org)

### **US Marine Corps Museum and Historical Center**

The Marine Corps Museum offers the public history of the US Marine Corps. The display honors those who have lost their lives serving, the commitment of Marines, and the accomplishments the Marine Corps.

Hours: Sun – Sat 9 a.m. – 5 p.m.

Metro: Eastern Market or Navy Yard

Contact: Washington Navy Yard, 6<sup>th</sup> St and M St, SE  
Washington, DC 20003  
1-800-397-7585  
[www.USMCMuseum.org](http://www.USMCMuseum.org)

### **US Navy Memorial Museum**

This museum was built to honor the rise and progression of the US Navy and shows the Navy's contributions to the national defense of the U.S.

Hours: Mon – Fri 9 a.m. – 5 p.m.

Sat – Sun 10 a.m. – 5 p.m.

Admission: Tour groups and individuals without military I.D. who wish to visit should call in advance

Metro: Archives – Navy Memorial

Contact: Washington Navy Yard, Building # 76  
Washington, DC 20374  
(202) 433-4882  
<http://www.history.navy.mil/Branches/org8-1.htm>

### **Ford's Theater and Lincoln Museum**

This marvelously restored 19<sup>th</sup>-century theater boasts the Lincoln Museum, which has in excess of 400 historic objects that tell the story of President Lincoln's assassination. Petersen's Boarding House, the actual location of Lincoln's death, is across the street.

Daily Hours: 9 a.m. – 5 p.m.

Metro: Metro Center

Contact: 511 10th Street, NW  
Washington, DC 20004  
(202) 426-6924  
[www.NPS.gov/foth](http://www.NPS.gov/foth)



### **Corcoran Gallery of Art**

The Corcoran was Washington's first art museum and is known throughout the world for its eminent collection of modern and historical American art, in addition to European paintings and decorative arts.

Hours: Wed – Mon 10 a.m. – 5 p.m.

Thu 10 a.m. – 9 p.m.

Admission: Individuals – \$10  
Students – \$8 (with ID)

Metro: Farragut North or Farragut West

Contact: 500 17th Street, NW  
Washington, DC 20006  
(202) 639-1700  
[www.Corcoran.org](http://www.Corcoran.org)



### **United States Holocaust Memorial Museum**

This grave and poignant museum displays, through photographs, film, artifacts, and oral histories, the harrowing story of the Holocaust.

Hours: 10 a.m. – 5:30 p.m.

Admission: Free; timed tickets required (available at door or call 1-800-400-9373) to view the permanent collection.

The permanent exhibit is not recommended for children under the age of 11.

Metro: Smithsonian

Contact: 100 Raoul Wallenberg Place, SW  
Washington, DC 20024  
(202) 488-0400  
[www.USHMM.org](http://www.USHMM.org)

### **The Textile Museum**

The Textile Museum, built in 1925, is the only museum in the western hemisphere that celebrates the collection, preservation, study and presentation of historic textiles and carpets.

Hours: Tues – Sat 10 a.m. – 5 p.m.  
Sun 1 p.m. – 5 p.m.

Admission: Free - donations welcomed

Metro: Dupont Circle

Contact: 2320 S Street, NW  
Washington, DC 20008  
(202) 667-0441  
[www.TextileMuseum.org](http://www.TextileMuseum.org)



### **B’Nai B’Rith National Jewish Museum**

The museum is dedicated to preserving and promoting the heritage and contributions of the Jewish people.

Hours: Mon – Thu 12 p.m. – 3 p.m.

Admission: Free; advance reservation required

Metro: Foggy Bottom or Farragut West

Contact: 2020 K St, NW  
Washington, DC 20006  
(202) 857-6583  
[www.BnaiBrith.org](http://www.BnaiBrith.org)

### **National Museum of Women in the Arts**

This permanent collection, which contains over 1500 works of art, is the lone exhibition in the world focused wholly on recognizing the contributions of women artists.

Hours: Mon – Sat 10 a.m. – 5 p.m.  
Sun 12 p.m. – 5 p.m.

Admission: Adults – \$12  
Students – \$10  
Children (18 and below) – Free

Metro: Metro Center

Contact: 1250 New York Avenue, NW  
Washington, DC 20005  
(202) 783-5000  
[www.NMWA.org/programTours](http://www.NMWA.org/programTours)

### **Woodrow Wilson House**

Built in 1915, the museum is D.C.’s only presidential museum and the former home of President and Mrs. Wilson in the last 3 years of his life following his presidency.

Hours: Tue – Sun 10 a.m. – 4 p.m.

Admission: Adults – \$7.50  
Seniors – \$6.50  
Students – \$3.00

Metro: Dupont Circle

Contact: 2430 S Street, NW  
Washington, DC 20008  
(202) 387-4062  
[www.WoodrowWilsonHouse.org](http://www.WoodrowWilsonHouse.org)

**Daughters of the American Revolution Museum**

This museum offers the viewing of 33 period rooms, containing rotating exhibits, with an outstanding collection of American furnishings and galleries.

Hours: Mon – Fri 9:30 a.m. – 4 p.m.  
Sat 9 a.m. – 5 p.m.

Admission: Free

Metro: Farragut North or Farragut West

Contact: 1776 D Street, NW  
Washington, DC 20006  
(202) 628-1776  
[www.DAR.org/Museum](http://www.DAR.org/Museum)



**National Geographic Museum at Explorers Hall**

The National Geographic Building boasts a unique rotating globe and a special electronic map illustrating many celebrated world expeditions.

Hours: Mon – Sat 9 a.m. – 5 p.m.  
Sun 10 a.m. – 5 p.m.

Metro: Farragut North or Farragut West

Contact: 17<sup>th</sup> Street and M Street, NW  
Washington, DC  
(202) 857-7588  
<http://www.events.nationalgeographic.com/events/locations/center/museum/>

**Newseum**

This massive 250,000-square-foot museum is the only interactive museum of news. It provides five centuries of news history and up-to-the-second news through excellent technology and hands-on exhibits

Hours: Sun – Sat 9 a.m. – 5 p.m.

Admission: Adults - \$20  
Seniors - \$18  
Students - \$13

Contact: 555 Pennsylvania Ave.,  
Washington, D.C. 20001  
1-888-NEWSEUM  
[www.Newseum.org](http://www.Newseum.org)

**Folger Shakespeare Library**

The Folger Shakespeare Library is a spectacular research center devoted Shakespeare and the early modern age in the West.

Hours: Mon – Sat 10 a.m. – 5 p.m. \*Closed all federal holidays\*

Admission: Free

Metro: Capitol South

Contact: 201 East Capitol Street, SE  
Washington DC 20003  
(202) 544-4600  
[www.Folger.edu](http://www.Folger.edu)

**Phillips Collection**

Opened in 1921, the Phillips collection, a private collection of renowned artists, became the first museum of modern art in the United States.

Hours: Tue – Sat 10 a.m. – 5 p.m.  
Sun 11 p.m. – 6 p.m.

Admission: prices vary with each exhibition.

Metro: Dupont Circle



Contact: 1600 21<sup>st</sup> Street, NW  
Washington, DC 20009  
(202) 387-2151  
[www.PhillipsCollection.org](http://www.PhillipsCollection.org)

### Parks

#### **Theodore Roosevelt Island**

This island memorial, befitting the outdoorsman 26<sup>th</sup> President holds two and a half miles of nature trails in addition to the Roosevelt Memorial Statue.

Hours: daylight hours only

Contact: In the Potomac River  
George Washington Memorial Pkwy  
Washington, DC  
(202) 285-2620  
[www.NPS.gov/this](http://www.NPS.gov/this)

#### **National Arboretum**

In addition to a famous Bonsai collection, the Arboretum contains 444 acres of trees, flowering plants, shrubs, and picnic grounds

Hours: 8 a.m. – 5 p.m.

Admission: Free, and. Guided tours offered (with three weeks advance notice) for groups of 10 or more

Metro: Stadium – Armory \*free parking is available\*

Contact: 3501 New York Ave., NE  
Washington, DC 20002  
(202) 245-2726  
[www.USNA.USDA.gov](http://www.USNA.USDA.gov)



#### **National Zoological Park**

The National Zoological Park contains over 3,000 exotic birds, animals, and reptiles from around of the world, including 4200 pound Asian elephants to millipedes.

Hours: April 3 – Oct 29 6 a.m. – 8 p.m. (grounds)  
10 a.m. – 6 p.m. (buildings)

Oct 30 – April 1 6 a.m. – 6 p.m. (grounds)  
10 a.m. – 4:30 p.m. (buildings)

Admission: Free; Guided and group tours available by appointment

Metro: Woodley Park – Zoo – Adams Morgan

Contact: 3001 Connecticut Avenue, NE  
Washington, DC 20008  
(202) 633-4800  
[www.NationalZoo.Si.edu](http://www.NationalZoo.Si.edu)

### Local Sports Teams

#### **Basketball - Washington Wizards**

Season: October - May

Metro: Gallery Place – Chinatown

Contact: Verizon Center  
601 F Street, NW  
Washington, DC 20004  
(202) 661-5050  
[www.WashingtonWizards.com](http://www.WashingtonWizards.com)

#### **Football - Washington Redskins**

Season: August - January

Metro: Landover or Addison Rd

Contact: FedEx Field  
1600 FedEx Way  
Landover, MD 20785  
(301)276-6738  
[www.Redskins.com](http://www.Redskins.com)

**Baseball - Washington Nationals**

Season: March – October

Metro: Navy Yard

Contact: Nationals Park  
S. Capitol and N St. SE  
Washington, D.C. 20003  
(202) 675-6287  
[www.Nationals.com](http://www.Nationals.com)

**Soccer - DC United**

Season: March - October

Metro: Stadium – Armory

Contact: RFK Stadium  
2400 E. Capitol Street SE  
Washington, D.C. 20003  
(202) 587-5000  
[www.DCUnited.com](http://www.DCUnited.com)

**Hockey – Washington Capitals**

Season: October – April

Metro: Gallery Place – Chinatown

Contact: Verizon Center  
601 F Street, NW  
Washington, DC 20004  
(202)661-5050  
[www.Capitals.NHL.com/](http://www.Capitals.NHL.com/)

*Where to eat on Capitol Hill*



- Union Station** - 500 Massachusetts Ave, NW
- American (American); Center Café (American); Savannah (Southern); Station Grill (American); Uno’s Pizzeria (Pizza)
- Pete’s Carryout (American)** - 1950 I St., NW
- Capitol Supermarket** - 1231 11<sup>th</sup> St., NW
- Tortilla Coast (Mexican)** - 400 1<sup>st</sup> St, SE
- Bullfeathers (American)** - 410 1<sup>st</sup> St., SE
- Good Stuff Eatery (American)** - 303 Pennsylvania, SE
- Le Bon Café (Casual/French)** - Carryout Only, 2<sup>nd</sup> Street SE
- The Monocle (American)** - 107 D St., NE
- Yamato (Japanese)** - 201 Massachusetts, NE
- White Tiger (Indian)** - 301 Massachusetts, NE
- Armand’s Chicago Pizzeria (Pizza)** - 226 Massachusetts, NE
- Subway (Sandwiches)** - 236 Massachusetts, NE; 406 1<sup>st</sup> St, SE
- Café Berlin (German)** - 322 Massachusetts, NE
- Capitol City Brewing Co.** - 2 Massachusetts, NE
- Jimmy T’s Place (American)** - 501 E. Capitol St. , SE
- Eastern Market Lunch (American)** - 225 7<sup>th</sup> St., SE
- Presto Deli & Carryout (Italian)** - 210 6<sup>th</sup> St. SE
- China Wall (Carryout)** - 415 8<sup>th</sup> St., SE; 424 8<sup>th</sup> St., SE
- Trattoria Alberto (Italian)** - 506 8<sup>th</sup> St., SE
- Szechuan House (Chinese)** - 515 8<sup>th</sup> St., SE
- Burrito Brother (Mexican Carryout)** - 205 Pennsylvania, SE
- 2<sup>nd</sup> St. Deli (Natural)** - 209 Pennsylvania, SE
- Chesapeake Bagel Bakery (American)** - 215 Pennsylvania, SE
- Hunan Dynasty (Chinese)** - 215 Pennsylvania, SE
- Greek Taverna (Greek)** - 305 Pennsylvania, SE

**La Lomita Dos Restaurant (Mexican)** - 308 Pennsylvania, SE  
**Thai Roma (Thai)** - 313 Pennsylvania, SE  
**Hawk 'n Dove (American)** - 329 Pennsylvania, SE  
**Tune Inn (American)** – 331 Pennsylvania, SE  
**Bread & Chocolate (New American)** - 666 Pennsylvania, SE  
**McDonald's (Fast-Food)** - 1539 Pennsylvania, SE

Hotels

**Red Roof Inn- Downtown DC**

500 H Street, NW  
Washington, DC 20001  
1-800-843-7663  
(202) 289-5959  
(202) 682-9152 (fax)

[http://www.redroof.com/reservations/inn\\_details.asp?innNumber=254](http://www.redroof.com/reservations/inn_details.asp?innNumber=254)

**Washington Court Hotel**

525 New Jersey Avenue, NW  
Washington, DC 20001  
(202) 628-2100  
(202) 879-7918 (fax)

<http://www.washingtoncourthotel.com/>

**Capitol Hill Suites**

200 C. St., SE  
Washington, DC 20003  
1-888-627-7811  
(202) 543-6000  
(202) 547-2608 (fax)

<http://www.capitolhillsuites.com/index.html>

**Holiday Inn- Capitol Hill**

415 New Jersey Avenue, NW  
Washington, DC 20001  
(202) 638-1616  
(202) 638-0707 (fax)

<http://www.hionthehilldc.com/>

550 C Street, SW  
Washington, DC 20024  
(202) 479-4000

<http://www.hicapitoldc.com/>

**Hyatt Regency Washington**

400 New Jersey Avenue, NW  
Washington, DC 2001  
1-800-233-1234  
(202) 737-1234  
(202) 737-5773 (fax)

<http://washingtonregency.hyatt.com/hyatt/hotels/index.jsp>

*For more hotel information....*

**Capitol Reservations:**  
1-800-847-4832

**Hotel Reservation Network:**  
1-800-964-6835  
[www.Discount.com](http://www.Discount.com)

**Washington, DC Accommodations:**  
1-800-554-2220