

JOINT BASE PEARL HARBOR- HICKAM





Joint Base Background

■ BRAC Law - 2005

- Realign Hickam AFB by transferring the installation management functions to Naval Station Pearl Harbor
- Establish Joint Base Pearl Harbor-Hickam

■ Implications:

- USAF will transfer to USN all Real Property for Hickam AFB plus total obligation authority (TOA), Resources, and PP&PE to meet OSD defined levels of service
- Navy will deliver the OSD required levels of service for OSD defined installation support functions
- “Joint Base” replaces NAVSTA Pearl Harbor and Hickam AFB
- Installation Management Functions joint, **NOT** the individual mission areas of the existing organizations



Joint Base Background

- **Joint Basing will...**
 - **preserve mission capabilities and unique Service identities**
 - **respect the history of installations**
 - **focus on optimizing installation management**
 - **require a team effort to be successful**

- **Joint Basing will not...**
 - **mandate a reduction of jobs**
 - **be a one-size fits all approach**
 - **be simple to implement, but the results promise value for the effort**



Joint Base Background

BRAC Law of 2005 specified realignment of 26 bases into 12 Joint Bases. The lead service provides Installation Support for the entire Joint Base.

Navy Lead

NS Pearl Harbor / **Hickam AFB** = Joint Base Pearl Harbor-Hickam (II)

Navy Base Guam / **Andersen AFB** = Joint Region Marianas (I)

Anacostia Annex / **Bolling AFB** = Joint Base Anacostia-Bolling (II)

NAB Little Creek / **Ft Story** = Joint Base Little Creek-Story (I)

Army Lead

Ft Lewis / **McChord AFB** = Joint Base Lewis-McChord (II)

Ft Myer / **Henderson Hall** = Joint Base Myer-Henderson Hall (I)

NAVY / AIR FORCE

ARMY / MARINES

Air Force Lead

Charleston AFB / **NWS Charleston** = Joint Base Charleston (II)

McGuire AFB / **Ft Dix** / **NAES Lakehurst** = Joint Base McGuire-Dix-Lakehurst (I)

Andrews AFB / **NAF Washington** = Joint Base Andrews-Naval Air Facility Washington (I)

Elmendorf AFB / **Ft Richardson** = Joint Base Elmendorf-Richardson (II)

Lackland AFB / **Randolph AFB** / **Ft Sam Houston** = JB Lackland-Sam Houston-Randolph (II)

Langley AFB / **Ft Eustis** = Joint Base Langley-Eustis (II)



Joint Base Background

- **Joint Basing is the pilot to standardizing base installation management services across the DoD**
 - Goal of providing the right level of services for military members and their families
 - Joint Base Commander delivers all Installation Support
 - Authority, personnel, funding, & real property aligned
 - Common Output Level Standards (COLS)
- **Joint Basing is *“doing installation management right”***
- **Joint Basing informs senior DoD leadership of *“real”* costs to manage infrastructure**
- **Joint Basing will require teamwork, flexibility and communication**



Joint Basing Priorities

- Locally developed Guiding Tenets:
 - Maintain or enhance operational capabilities (no negative mission impact)
 - Ensure successful and effective integration
 - After first two are assured, harvest efficiencies



JBP HH Vision & Mission

Vision

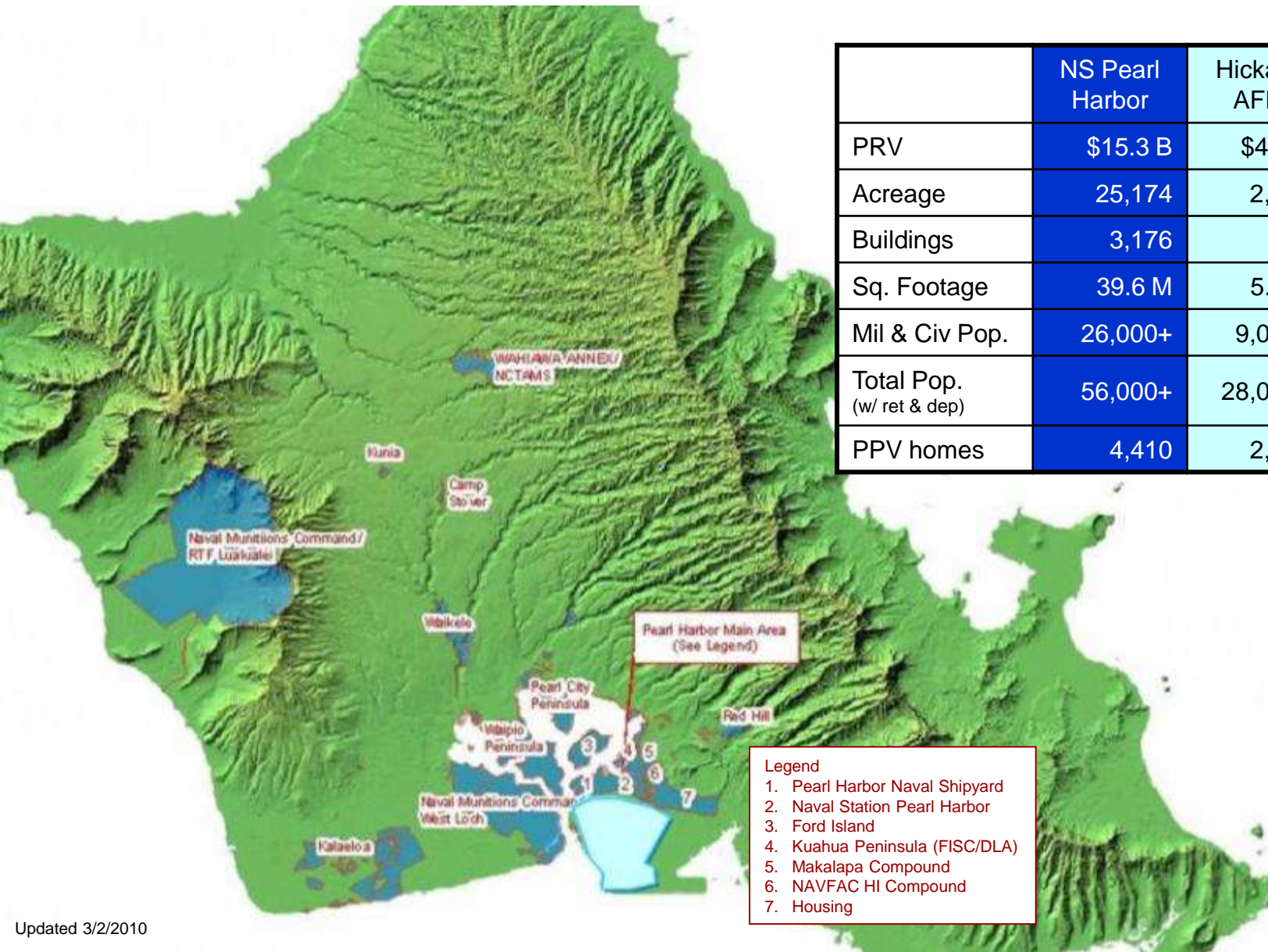
Joint Base Pearl Harbor-Hickam enables maximum mission readiness of our tenant commands and activities by providing the highest quality installation services, facilities support and quality of life programs.

Mission

Customer service is our core competency. Team Pearl Harbor-Hickam provides service with aloha to the Commands, Warfighters and Families of Joint Base Pearl Harbor-Hickam at a level recognized as the benchmark among all military installations. Every member of Team Pearl Harbor-Hickam knows they are valued and appreciated, and they contribute to making Joint Base Pearl Harbor-Hickam the best place to work on Oahu. Individually and collectively we are good neighbors and active partners in the Oahu community, exercising uncompromising stewardship of the fiscal, environmental, cultural and historic resources under our care.



Joint Base Pearl Harbor-Hickam Scope



	NS Pearl Harbor	Hickam AFB	JBPHH
PRV	\$15.3 B	\$4.1 B	\$19.4 B
Acreage	25,174	2,520	27,694
Buildings	3,176	758	3,934
Sq. Footage	39.6 M	5.1 M	44.7 M
Mil & Civ Pop.	26,000+	9,000+	35,000+
Total Pop. (w/ ret & dep)	56,000+	28,000+	84,000+
PPV homes	4,410	2,474	6,884

- Legend
1. Pearl Harbor Naval Shipyard
 2. Naval Station Pearl Harbor
 3. Ford Island
 4. Kuahua Peninsula (FISC/DLA)
 5. Makalapa Compound
 6. NAVFAC HI Compound
 7. Housing



JBP HH Commands & Activities

Installation Support by 4 commands under Regional construct:

- ▶ Joint Base PHH
- ▶ COMNAVREGHI
- ▶ NAVFAC HI
- ▶ FISC Pearl Harbor

Major Units Supported:

- ▶ COMPACFLT(★★★★)
- ▶ HQ PACAF(★★★★)
- ▶ COMSUBPAC(★★)
- ▶ 13 AF (★★★)
- ▶ COMNAVSURFGRUMIDPAC(★)
- ▶ 15 WG
- ▶ NAVFAC PAC(★)
- ▶ 515 AMOW (715 AMOG-735 AMS)
- ▶ DESRON (1)
- ▶ 692 IG
- ▶ SUBRONS (3)
- ▶ NCTAMS PAC
- ▶ NIOC HI
- ▶ Pearl Harbor Naval Shipyard
- ▶ CBMU 303
- ▶ Naval Munitions Command EAD
- ▶ 29 home-ported ships and subs
- ▶ 1 NSW SDVT

Major Tenants

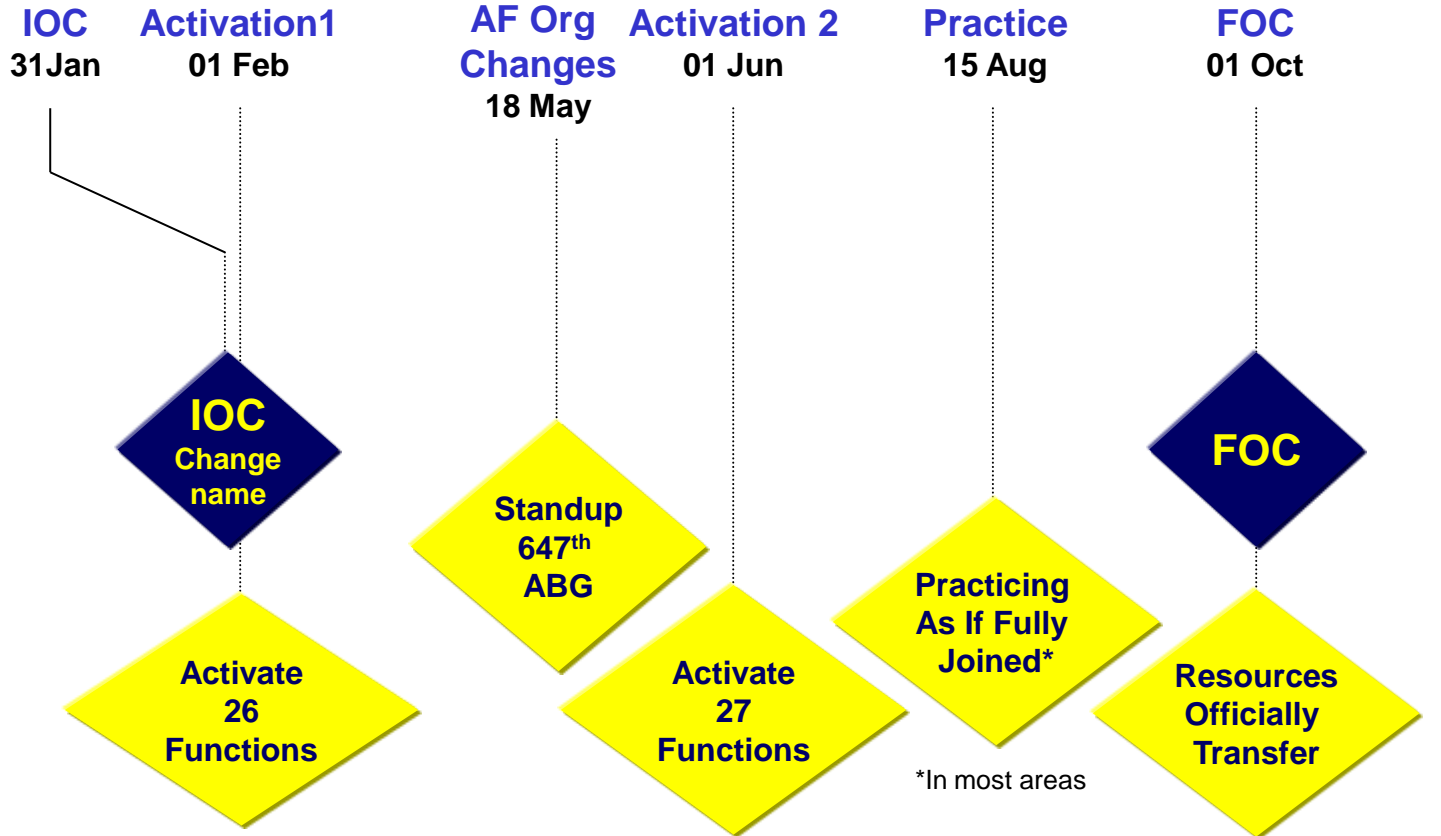
- ▶ NOAA
- ▶ JPAC (★★)
- ▶ JIOC PAC
- ▶ 154 HIANG (Guard) (★)
- ▶ US Army Det 16
- ▶ GSA
- ▶ DLA



Implementation Timeline

Prior Accomplishments

- 36 Functional Working Group teams established for 49 installation support functions.
- Memorandum of Agreement signed by service chiefs
- Resource transfer document prepared
- Organizational structure established
- Implementation Plans / Business Rules developed



Crawl > Walk > Jog > Run Fully Joined

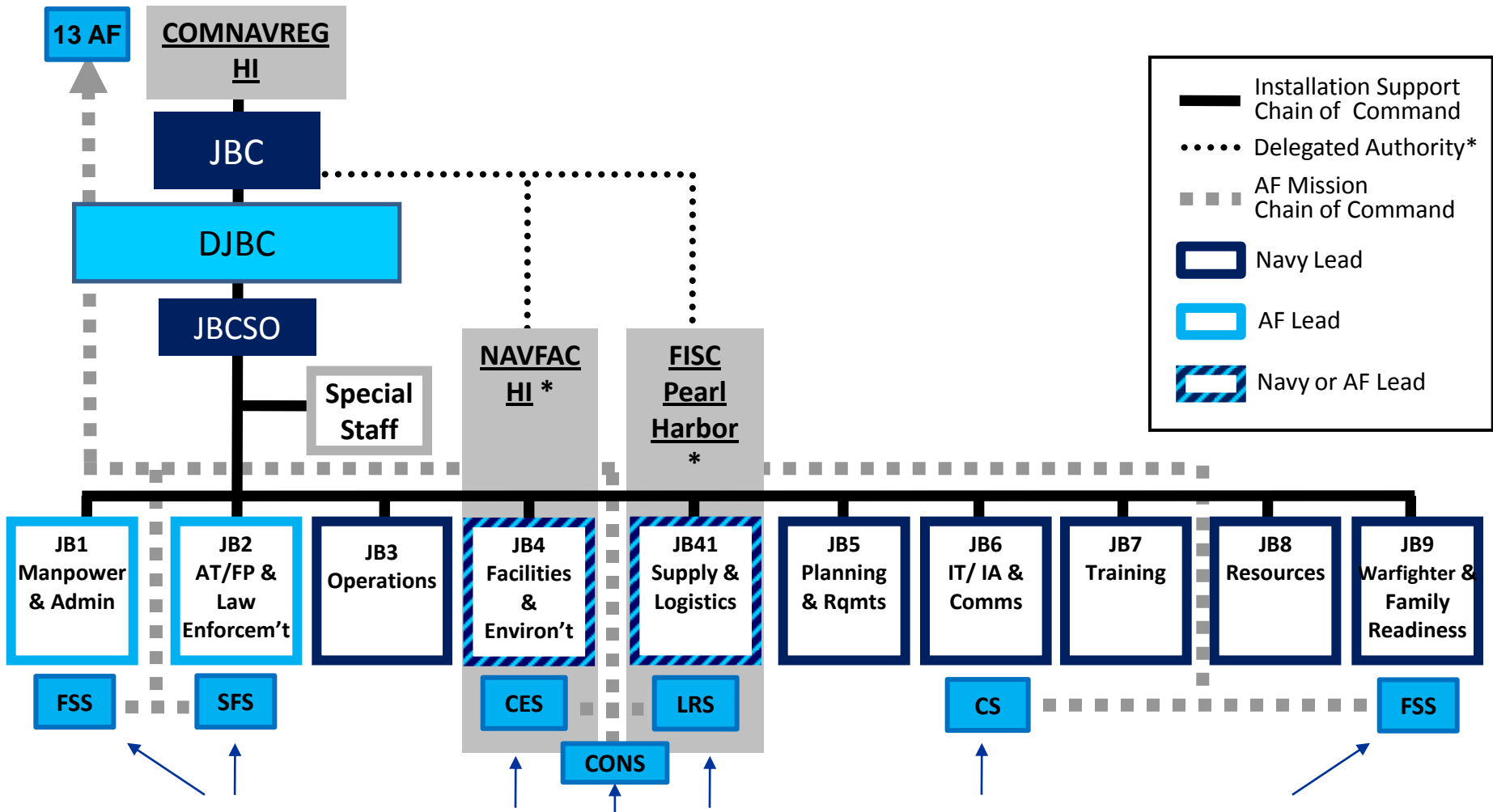


What We've Accomplished

- **January 2008 - Implementation Guidance from Deputy Secretary of Defense**
- **Significant cross-service and cross-departmental effort to work the details**
 - **36 Teams in Functional Working Groups established for 49 installation support functions and 128 sub-functions**
 - **Joint Base Partnership Council (JBPC) and Joint Base Oversight Working Group (JBOWG) established**
 - **Organizational structure established**
 - **Implementation Plans developed & put in progress**
 - **Memorandum of Agreement (MOA) & Resource Transfer Document (PB14) developed locally**
- **July 2009 - JBPHH staff meetings commenced**
- **August 2009 - MOA signed by VCNO / VCSAF**
- **January 2010 - IOC - Name changed to JBPHH**
- **Phased implementation of functions & command authorities**
 - **1 Feb 2010 approximately half of functions joined**
 - **1 June 2010 remainder of functions joined**
- **June 2010 - Command Structure implemented**
- **August 2010 - "Soft" FOC - all functions & command authorities activated as much as possible**



JBP HH Organization



(Rough functional alignment of 647th Air Base Group Squadrons to Navy's construct)



Key Leaders



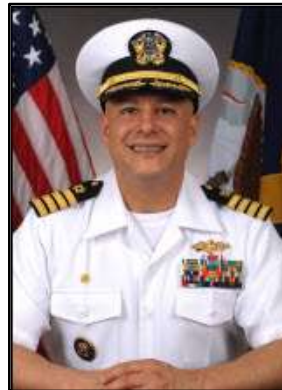
CAPT Richard Kitchens
Joint Base Pearl Harbor-Hickam
Joint Base Commander



Col Sam Barrett
15th Wing
Hickam Field



Col Rusty Baumgardner
647th Air Base Group / Joint Base Pearl Harbor-Hickam
Deputy Joint Base Commander



CAPT John Coronado
Naval Facilities Engineering Command (NAVFAC Hawaii)



CAPT John Poloczky
Fleet & Industrial Supply Center (FISC Pearl Harbor)



Functional Alignment by Navy Command

Blue Italics = Phase 1 Activation 1 Feb 2010

Green = Phase 2 Activation 1 June 2010

JBP HH

Phase 1

- MILPERS Services
- Management Analysis (Manpower (under discussion))
- Installation Law Enforcement Operations
- Installation Physical Security Protection
- Installation Protection Support
- Small Arms Range Management
- Emergency Management
- Installation Safety (TBD)
- Port Services
- Laundry & Dry Cleaning
- Senior Enlisted Advisor
- Administrative Management & Executive Office
- Chaplain Ministries
- Honors
- Equal Opportunity
- Equal Employment Opportunity (under discussion)
- Legal Support
- Public Affairs

Phase 2

- Children & Youth Programs
- Lodging
- Morale, Welfare, & Recreation (MWR)
- Family Housing
- Unaccompanied Personnel Housing
- Food Services
- Military & AF Civilian Drug Testing

CNRH

Phase 1

- Equal Employment Opportunity
- Fire Protection & Emergency Services
- Information Technology Services Management
- Financial Management
- Inspector General
- Internal Review
- Protocol
- Legal Support

Phase 2

- Civilian Drug Testing
- Management Analysis
- Non-Appropriated Fund Instrumentality (NAFI)
- Warfighter & Family Services

FISC PH

Phase 1

- Postal Services
- Procurement
- Supply, Storage & Distribution (Non-Munitions)
- Installation Movement

Other

- Personal Property & Plant Equipment (PP&PE)

NAVFAC HI

Phase 1

- Base Support Vehicles & Equipment (BSVE)
- Procurement

Phase 2

- Utilities
- Custodial Services
- Grounds Maintenance & Landscaping
- Pavement Clearance Svcs
- Pest Control Services
- Real Property Leases
- Real Property Management & Engineering Services
- Refuse Collection & Disposal
- Facilities Demolition
- Facilities New Footprint
- Facilities Restoration & Modernization
- Facilities Sustainment
- Environmental Compliance
- Environmental Conservation
- Environmental Pollution Prevention
- Environmental Restoration



Evolving Roles/Responsibilities



A sample of responsibilities “post joining”

■ 15 WG

- UCMJ ● Courts Martial Authority ● Sexual Assault Prevention and Response Program ● IG investigations and inspections (CDIs)
- Central Registry Board ●

■ JBPHH/647 ABG

- Traffic Court ● Legal Assistance (wills, powers of attorney) ● Telephone services ● Mobility Machine ● Facilities Board ● Private Orgs ● Energy Mgmt Steering Group ● CDC and SAP Advisory Committees ● Emergency Management ●

■ 647 ABG

- AF Net ● FOIA ● Specialized Procurement ● Action Line ● CAIB/IDS ● Civ Corporate Board ● Mgmt Review Committee ● AF Aid and Assistance ● C4 Forum ●



JB-2 Security Highlights

- AF and Navy personnel will merge into one Security Force comprised of Civilians, Contractors and Navy and Air Force active duty.
 - What transfers to the JBC
 - Debarment authority
 - Magistrate authority
 - Revocation of driving privileges
 - Service calls and responses will continue as normal. 911 for emergencies.
 - Base Access: The joint base access instruction is in final review. The instruction will provide detailed access information for military, civilians, family members, retirees, guests, and contractors.
 - Vehicle decals: Continue to use existing AF and Navy decals. They will be replaced over time with Joint Base decals.
 - Hands free cell phone devices are authorized
-



Closing Thoughts

- Strong working relationships between AF & Navy counterparts
 - The “most joint” of the Joint Bases
- Challenges & Concerns
 - The common Joint Basing challenges:
 - HRO, IT, Data Migration, One-time Implementation Costs
 - Workload during transition, especially AF JB Dept Heads
 - Emphasis on embedded USAF MILPERS
 - Maximizing command integrity & deployment readiness
 - Ensuring AF “promote ability”, training, etc.
- Opportunities
 - Business process for “new bed-down”
 - Best practices sharing
 - Joint Duty credit
- Many success stories, but a LOT of work left

JBPHH Implementation Is On Track, No Major Concerns

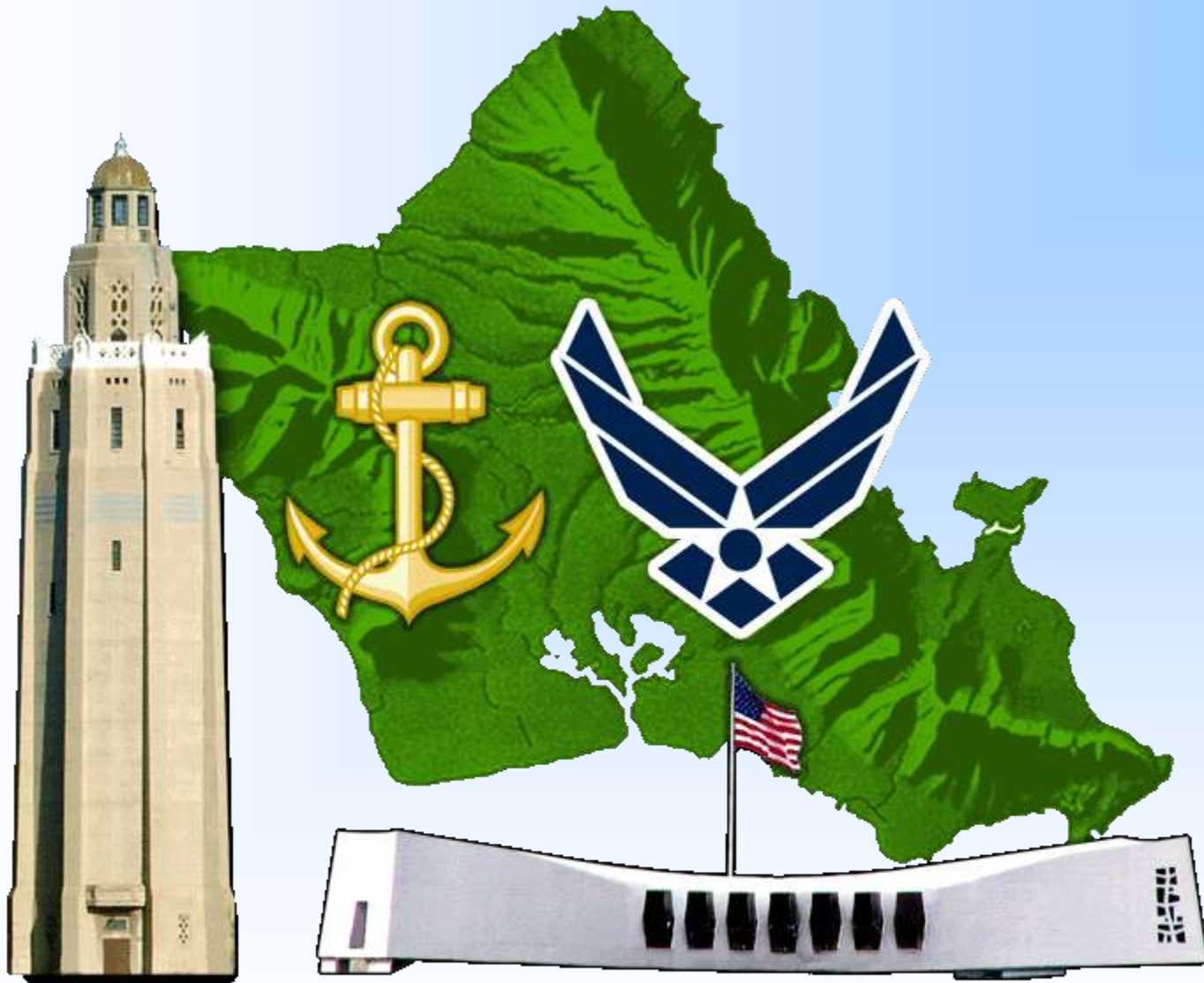


Visit Our Website

- For lots more information or to submit a question please visit us at

<http://www.cnmc.navy.mil/PearlHarbor-Hickam/index.htm>

JOINT BASE



PEARL HARBOR-HICKAM

<http://www.cnmc.navy.mil/PearlHarbor-Hickam/index.htm>



Joint Basing Terminology

- **BRAC – Base Realignment and Closure:** The process DOD uses for efficient and effective force support, to increase operational readiness and facilitate new ways of doing business.
- **Joint Base:** A location designated in BRAC 2005 as having installation support (IS) functions transferred from one or more installations to another for efficiency of delivery.
- **JBPHH:** Joint Base Pearl Harbor–Hickam, the consolidation of installation support functions for Naval Station Pearl Harbor and Hickam AFB.
- **JBC – Joint Base Commander:** The billet established by the supporting component dedicated to the delivery of IS at the joint base (JBPHH = CO NAVSTA PH)
- **IS – Installation Support:** Any of the five categories of services and support activities utilized for installation management; Facilities, Services, Family Housing, Environment and BRAC.



Joint Basing Terminology

- **JBIG – Joint Base Implementation Guidance:** Detailed OSD guidance providing guidance for implementation of joint basing.
- **MOA – Memorandum of Agreement:** The binding document for each joint base that describes the organizational structure, resources, output levels, dispute resolution and other agreements developed between the components
- **PB14 (MOA Annex U):** The MOA annex that identifies resources for both base partners
- **TOA – Total Obligation Authority:** The budget authority granted from Congress.
- **COLS – Common Output Level Standards:** The output or performance level standards established by DoD for installation support using a common framework of output metrics and cost drivers. These standards provide a description of the capability associated with each function.



Joint Basing Terminology

- **Supported Component:** Component transferring Installation Support (IS) management functions to another at the Joint Base. (JBPHH = Air Force)
- **Supporting Component:** Component having IS functions transferred to them and now responsible for providing IS to the entire Joint Base. (JBPHH = Navy)
- **Tenant:** Any unit or organization, both DoD and non DoD, at a joint base not specifically attached to the joint base command. (JBPHH = Air National Guard)
- **IOC – Initial Operational Capability:** The beginning of the period of transition to the joint base, marked by stand up of the joint base command (JBPHH = Jan 31, 2010)
- **FOC – Full Operational Capability:** The end of the transition period at which the resources, property, personnel and authority for IS management functions have been transferred to the supporting component (JBPHH = Oct 1, 2010)



Joint Basing Terminology

- **JMOS – Joint Management Oversight Structure:** The structure responsible for providing equitable conflict resolution and resource allocation between the components at the joint base.
- **JBPC – Joint Base Partnership Council:** Council of commanders of units most directly involved in providing & receiving IS. (JBPHH = JBC, Deputy JBC, 15 WG, HIANG, NAVFAC HI, FISC PH, CNRH Chief of Staff)
- **JBOWG:** A management working group with representatives of all members of the JBPC.
- **FWG – Functional Working Group:** A joint team of subject matter experts for a particular IS function responsible for developing their respective annex, implementation plan and standard operating procedures.