

For release 10:00 a.m. (EDT) Thursday, March 29, 2012

USDL-12-0550

Technical information: (202) 691-5618 • dipsweb@bls.gov • www.bls.gov/lpc

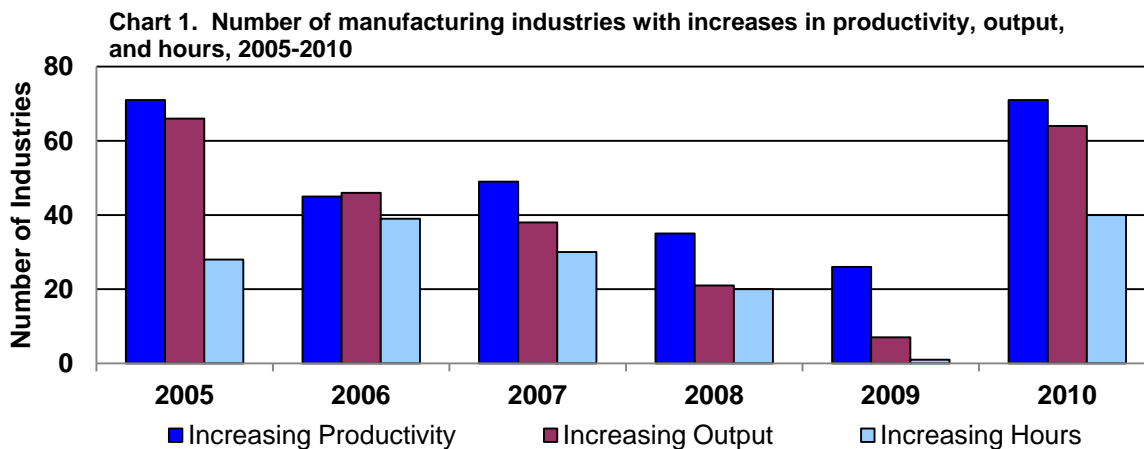
Media contact: (202) 691-5902 • PressOffice@bls.gov

**NOTE: With the update of multifactor productivity measures for detailed industries on Sept. 26, 2012, measures of output, output per hour, output per worker, value of production, implicit price deflator, and unit labor costs for 2008-2010 were revised for NAICS 3346 and NAICS 334. The revisions supersede the data for these industries published in this news release. The revised measures are available from the online data query tool and in the industry labor productivity tables on this website.**

### PRODUCTIVITY AND COSTS BY INDUSTRY: MANUFACTURING INDUSTRIES, 2010

**Labor productivity** – defined as output per hour – rose in 83 percent of the 86 detailed manufacturing industries studied in 2010, the U.S. Bureau of Labor Statistics reported today. This was up from 30 percent in 2009. **Unit labor costs**, which reflect the total labor costs required to produce a unit of output, declined in 73 percent of the industries in 2010 compared to only 21 percent in 2009, as productivity increased more rapidly than hourly compensation.

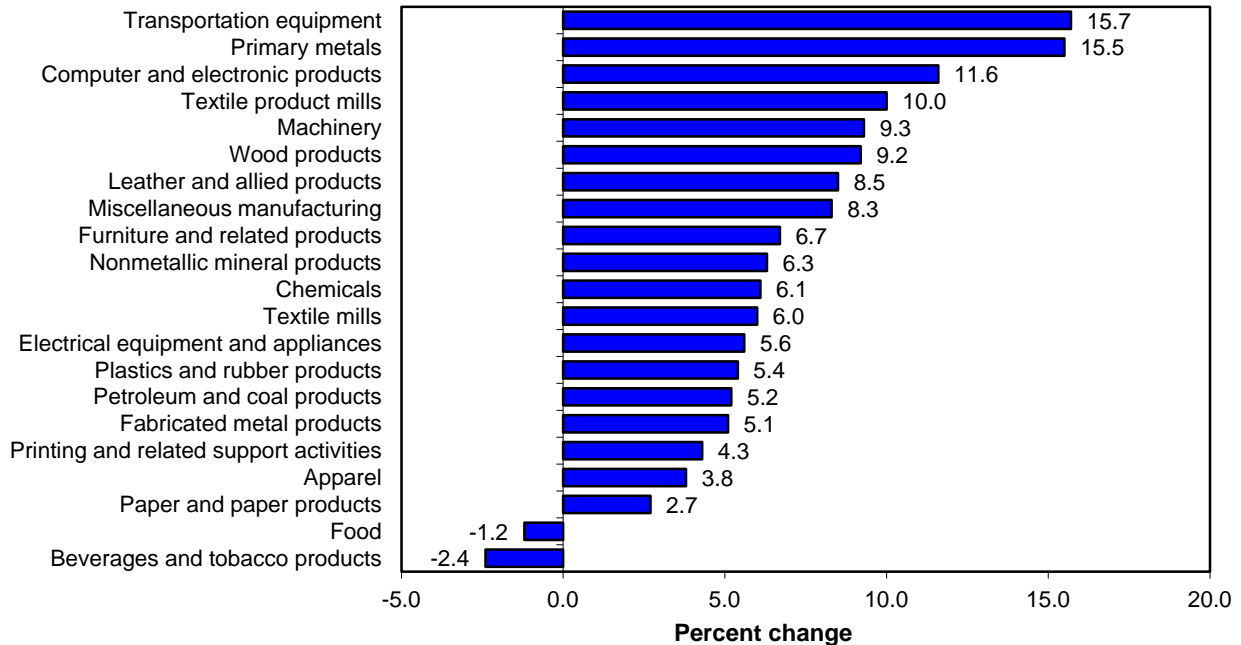
For many industries, the productivity increases in 2010 were driven by large increases in output coupled with declines or more modest gains in hours. Output rose in 64 of the 86 industries in 2010, and hours rose in 40 of the industries. The number of industries with increases in labor productivity and output was higher in 2010 than in any other year since 2005. (See chart 1 and table 1.) The number of industries with increases in hours was higher than in any year since 1997, and the number with declines in unit labor costs was the highest since the series began in 1987.



Industry labor productivity measures are updated as data become available. Productivity measures for industries in other sectors can be accessed on the BLS Labor Productivity and Costs website at [www.bls.gov/lpc](http://www.bls.gov/lpc).

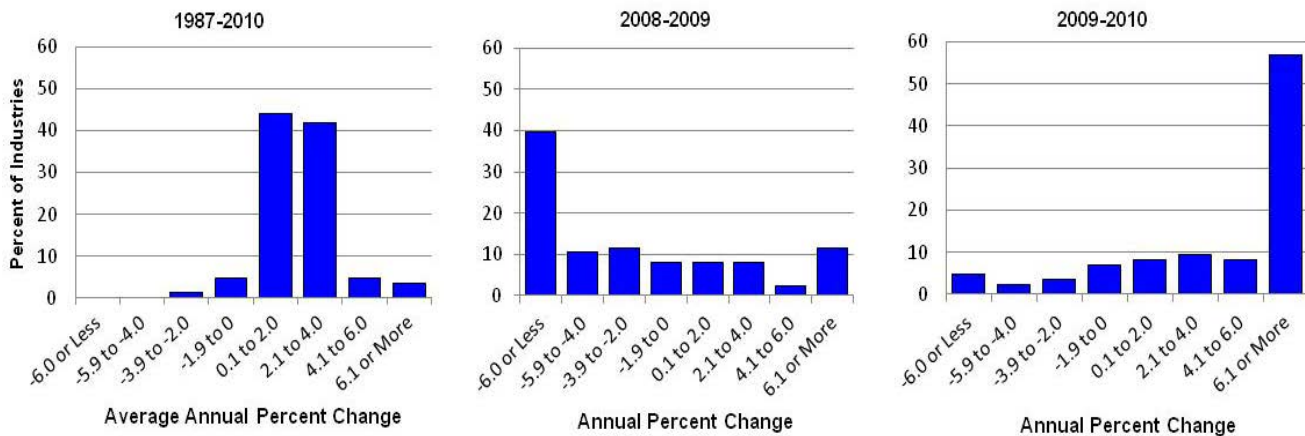
Labor productivity increased in 19 of the 21 3-digit NAICS manufacturing industries in 2010. Chart 2 shows the range of productivity changes for all 3-digit manufacturing industries. Output increased in 16 of these industries, and hours declined in 11. Unit labor costs fell in 20 of the 3-digit manufacturing industries in 2010.

**Chart 2. Percent change in output per hour in 3-digit NAICS manufacturing industries, 2009-2010**



Industry productivity performance over the longer, 1987-2010 period contrasts with the performance in 2010 and the previous year. Between 1987 and 2010, labor productivity increased in 94 percent of the detailed manufacturing industries, with over 85 percent of industries recording average productivity growth between 0.1 and 4.0 percent per year. Chart 3 below contrasts the distribution of productivity changes over the long term with those of the two most recent years. In 2010, large gains in industry productivity were more common than over the 1987-2010 period, while in 2009 large falloffs were more common. In 2010, 57 percent of industries posted productivity gains of 6.1 percent or more, while in 2009, 40 percent of industries recorded productivity losses of 6.0 percent or more.

**Chart 3. Distribution of average annual percent change in output per hour, 1987-2010, 2008-2009, and 2009-2010**



## Technical Note

**Labor Productivity:** The industry labor productivity measures describe the relationship between industry output and the labor time involved in its production. They show the changes from period to period in the amount of goods and services produced per hour. Although the labor productivity measures relate output to hours of all persons in an industry, they do not measure the specific contribution of labor or any other factor of production. Rather, they reflect the joint effects of many influences, including changes in technology; capital investment; utilization of capacity, energy, and materials; the use of purchased services inputs, including contract employment services; the organization of production; managerial skill; and the characteristics and effort of the workforce.

**Output:** Industry output is measured as an annual-weighted index of the changes in the various products (in real terms) provided for sale outside the industry. Real industry output is usually derived by deflating nominal sales or values of production using BLS price indexes, but for some industries it is measured by physical quantities of output. For manufacturing industries, industry output reflects sectoral value of production, derived by adjusting shipments for changes in inventories and removing intra-industry transactions.

Industry output measures are constructed primarily using data from the economic censuses and annual surveys of the Census Bureau, U.S. Department of Commerce, together with information on price changes primarily from BLS.

**Labor Hours:** The primary source of industry employment and hours data is the BLS Current Employment Statistics (CES) survey. The CES provides monthly data on the number of total and production worker jobs held by wage and salary workers in nonfarm establishments as well as data on the average weekly hours of production workers in those establishments. CES data are supplemented with data from the Current Population Survey (CPS) to estimate employment and hours of self-employed and unpaid family workers in each industry. Data from the CPS, together with the CES data, are also used to estimate the historical average weekly hours of nonproduction workers for each industry. CES and CPS data are supplemented or further disaggregated for some industries using data from the BLS Quarterly Census of Employment and Wages (QCEW), the Census Bureau, or other sources. Hours of all persons in an industry are treated as homogeneous and are directly aggregated.

**Unit Labor Costs:** Unit labor costs represent the cost of labor required to produce one unit of output. The unit labor cost indexes are computed by dividing an index of industry labor compensation by an index of real industry output. Unit labor costs also describe the relationship between compensation per hour and real output per hour (labor productivity). Increases in hourly compensation increase unit labor costs; increases in labor productivity offset compensation increases and lower unit labor costs.

Compensation, defined as payroll plus supplemental payments, is a measure of the cost to the employer of securing the services of labor. Payroll includes salaries, wages, commissions, dismissal pay, bonuses, vacation and sick leave pay, and compensation in kind. Supplemental payments include legally required expenditures and payments for voluntary programs. The legally required portion consists primarily of Federal old age and survivors' insurance, unemployment compensation, and workers' compensation. Payments for voluntary programs include all programs not specifically required by legislation, such as the employer portion of private health insurance and pension plans.

**Revisions:** The measures in this news release incorporate 2010 data and revisions to 2009 data from the Annual Survey of Manufactures (ASM) published by the Census Bureau. The measures in this release also incorporate the annual benchmark revision of the BLS Current Employment Statistics (CES) survey published in February 2012. All of the measures for 2010 in this release are preliminary and subject to revision.

**Additional Information:** With this release, some series that were formerly provided upon request are now available on the BLS Labor Productivity and Costs website at [www.bls.gov/lpc](http://www.bls.gov/lpc). These include annual levels of industry employment and hours, nominal values of production and labor compensation, and implicit price indexes for industry output.

The industries included in this news release are classified according to the 2007 NAICS. While the rates of change reported by BLS in this release are rounded to one decimal place, all percent changes are calculated using index numbers rounded to three decimal places.

Year-to-year movements in industry productivity may be erratic, particularly in smaller industries. The annual measures based on sample data may differ from measures generated by a census of establishments in the industry. Annual changes in an industry's output and use of labor may reflect cyclical changes in the economy as well as long-term trends. As a result, long-term productivity trends tend to be more reliable indicators of industry performance than year-to-year changes.

Industry productivity and related indexes; rates of change; and levels of industry employment, hours, nominal value of production and labor compensation can be accessed online by visiting the BLS Labor Productivity and Costs website at [www.bls.gov/lpc](http://www.bls.gov/lpc). Additional information is available by calling the Division of Industry Productivity Studies (202-691-5618) or by sending an e-mail to [dipsweb@bls.gov](mailto:dipsweb@bls.gov). Information in this report will be made available to sensory-impaired individuals upon request. Voice phone: 202-691-5618; TDD message referral phone number: 1-800-877-8339.

To subscribe to the industry productivity program's news releases, customers can register on the BLS website at <https://subscriptions.bls.gov/accounts/USDOLBLS/subscriber/new>.

**Table 1. Percent change in output per hour, unit labor costs, and related data, 2009-2010**

Industry	NAICS code	2010 Employment (thousands)	Percent change, 2009-2010				
			Output per Hour	Output	Hours	Labor compensation	Unit labor costs
<b>Manufacturing</b>							
Food.....	311	1,476.2	-1.2	-0.4	0.8	3.1	3.5
Animal food.....	3111	51.1	-5.5	-5.8	-0.3	3.9	10.3
Grain and oilseed milling.....	3112	59.2	-1.7	-1.6	0.1	2.6	4.2
Sugar and confectionery products.....	3113	69.5	7.6	1.8	-5.4	5.7	3.8
Fruit and vegetable preserving and specialty.....	3114	173.4	-4.9	-0.4	4.8	2.3	2.7
Dairy products.....	3115	132.8	1.1	1.1	0.1	4.0	2.8
Animal slaughtering and processing.....	3116	491.7	0.0	-0.6	-0.6	2.0	2.6
Seafood product preparation and packaging.....	3117	38.0	-9.3	-2.6	7.4	3.5	6.3
Bakeries and tortilla manufacturing.....	3118	295.0	0.4	0.9	0.5	1.9	1.0
Other food products.....	3119	165.5	-2.0	1.8	3.8	6.3	4.5
Beverages and tobacco products.....	312	187.1	-2.4	0.0	2.5	0.0	-0.1
Beverages.....	3121	170.6	-3.5	-0.1	3.6	0.3	0.4
Tobacco and tobacco products.....	3122	16.5	7.7	0.4	-6.8	-1.6	-2.0
Textile mills.....	313	128.3	6.0	9.5	3.3	0.8	-8.0
Fiber, yarn, and thread mills.....	3131	29.0	-1.1	7.4	8.6	-1.0	-7.9
Fabric mills.....	3132	60.1	-1.5	7.6	9.2	-0.6	-7.6
Textile and fabric finishing and coating mills.....	3133	39.2	23.7	13.7	-8.1	4.9	-7.7
Textile product mills.....	314	127.9	10.0	3.9	-5.6	3.0	-0.9
Textile furnishings mills.....	3141	60.6	8.1	0.8	-6.7	-0.3	-1.1
Other textile product mills.....	3149	67.3	13.6	8.5	-4.5	6.3	-2.1
Apparel.....	315	178.8	3.8	0.0	-3.7	-2.4	-2.4
Apparel knitting mills.....	3151	23.6	0.5	7.4	6.8	2.1	-4.9
Cut and sew apparel.....	3152	142.1	3.3	-1.6	-4.7	-2.5	-1.0
Accessories and other apparel.....	3159	13.1	11.4	1.0	-9.3	-7.7	-8.6
Leather and allied products.....	316	31.8	8.5	11.9	3.2	3.7	-7.3
Leather and hide tanning and finishing.....	3161	4.4	37.9	52.2	10.4	-2.0	-35.6
Footwear.....	3162	12.4	15.5	5.1	-9.1	7.5	2.3
Other leather products.....	3169	15.0	-10.7	1.8	13.9	2.3	0.5
Wood products.....	321	365.2	9.2	6.3	-2.7	0.0	-5.9
Sawmills and wood preservation.....	3211	85.4	3.2	10.7	7.3	6.6	-3.7
Plywood and engineered wood products.....	3212	64.3	11.3	5.5	-5.2	1.4	-3.9
Other wood products.....	3219	215.5	10.1	3.7	-5.8	-3.2	-6.6
Paper and paper products.....	322	396.6	2.7	2.5	-0.2	1.8	-0.6
Pulp, paper, and paperboard mills.....	3221	112.3	6.7	2.9	-3.6	0.9	-1.9
Converted paper products.....	3222	284.3	0.8	2.1	1.3	2.5	0.4
Printing and related support activities.....	323	525.1	4.3	-0.3	-4.4	-4.6	-4.4
Printing and related support activities.....	3231	525.1	4.3	-0.3	-4.4	-4.6	-4.4
Petroleum and coal products.....	324	114.3	5.2	4.0	-1.1	0.9	-3.0
Petroleum and coal products.....	3241	114.3	5.2	4.0	-1.1	0.9	-3.0
Chemicals.....	325	795.7	6.1	6.4	0.3	2.9	-3.3
Basic chemicals.....	3251	143.0	19.4	19.3	-0.1	6.0	-11.1
Resin, rubber, and artificial fibers.....	3252	89.7	18.6	18.9	0.2	4.0	-12.5
Agricultural chemicals.....	3253	36.8	3.4	-1.2	-4.4	4.7	5.9
Pharmaceuticals and medicines.....	3254	277.9	-8.2	-8.3	-0.1	1.7	10.9
Paints, coatings, and adhesives.....	3255	57.1	9.4	9.2	-0.2	0.8	-7.7
Soaps, cleaning compounds, and toiletries.....	3256	105.0	-0.2	2.3	2.5	-4.1	-6.3
Other chemical products and preparations.....	3259	86.2	13.0	15.5	2.2	8.6	-6.0
Plastics and rubber products.....	326	627.2	5.4	9.2	3.6	4.4	-4.3
Plastics products.....	3261	503.8	4.9	8.6	3.5	3.7	-4.5
Rubber products.....	3262	123.4	8.0	12.0	3.7	7.4	-4.1
Nonmetallic mineral products.....	327	387.0	6.3	3.2	-2.9	-0.5	-3.6
Clay products and refractories.....	3271	50.9	5.6	14.1	8.1	5.2	-7.8
Glass and glass products.....	3272	83.4	7.1	3.2	-3.6	0.0	-3.1

**Table 1. Percent change in output per hour, unit labor costs, and related data, 2009-2010 — Continued**

Industry	NAICS code	2010 Employment (thousands)	Percent change, 2009-2010				
			Output per Hour	Output	Hours	Labor compensation	Unit labor costs
Cement and concrete products.....	3273	171.9	3.9	-0.4	-4.2	-2.5	-2.0
Lime and gypsum products.....	3274	13.8	9.5	0.1	-8.6	-0.7	-0.7
Other nonmetallic mineral products.....	3279	67.0	13.7	8.3	-4.8	1.1	-6.6
Primary metals.....	331	365.8	15.5	23.2	6.6	9.3	-11.3
Iron and steel mills and ferroalloy production.....	3311	87.1	20.3	28.9	7.2	11.4	-13.6
Steel products from purchased steel.....	3312	52.7	29.3	42.6	10.3	13.3	-20.5
Alumina and aluminum production.....	3313	55.3	7.5	16.3	8.2	4.6	-10.1
Other nonferrous metal production.....	3314	58.9	9.2	17.2	7.3	8.1	-7.8
Foundries.....	3315	111.8	13.1	16.9	3.4	8.4	-7.3
Fabricated metal products.....	332	1,316.4	5.1	6.6	1.4	2.8	-3.6
Forging and stamping.....	3321	89.7	9.1	15.1	5.5	5.4	-8.4
Cutlery and hand tools.....	3322	41.5	15.4	10.6	-4.2	-1.4	-10.9
Architectural and structural metals.....	3323	326.6	2.3	-3.8	-5.9	-4.2	-0.4
Boilers, tanks, and shipping containers.....	3324	85.7	8.2	5.0	-3.0	1.4	-3.4
Hardware.....	3325	23.9	9.7	10.3	0.6	1.2	-8.3
Spring and wire products.....	3326	42.4	8.2	9.3	1.0	7.1	-2.1
Machine shops and threaded products.....	3327	329.3	7.5	14.7	6.7	8.0	-5.8
Coating, engraving, and heat treating metals.....	3328	122.8	7.8	15.1	6.7	5.2	-8.6
Other fabricated metal products.....	3329	254.5	1.1	5.1	4.0	3.5	-1.5
Machinery.....	333	1,007.5	9.3	11.8	2.3	3.6	-7.4
Agriculture, construction, and mining machinery.....	3331	208.5	11.3	15.6	3.9	0.9	-12.7
Industrial machinery.....	3332	101.9	20.5	26.9	5.3	3.3	-18.6
Commercial and service industry machinery.....	3333	91.8	4.4	1.9	-2.4	2.2	0.3
HVAC and commercial refrigeration equipment.....	3334	125.6	5.6	5.4	-0.2	2.5	-2.8
Metalworking machinery.....	3335	158.0	8.6	15.8	6.6	7.0	-7.5
Turbine and power transmission equipment.....	3336	92.0	11.4	10.0	-1.3	5.4	-4.2
Other general purpose machinery.....	3339	229.7	6.4	7.9	1.4	4.1	-3.5
Computer and electronic products.....	334	1,104.0	11.6	8.1	-3.1	3.9	-3.9
Computer and peripheral equipment.....	3341	157.9	-18.3	-22.5	-5.1	-15.1	9.5
Communications equipment.....	3342	117.9	8.8	2.3	-5.9	1.9	-0.4
Audio and video equipment.....	3343	20.1	7.1	-7.7	-13.8	-24.0	-17.6
Semiconductors and electronic components.....	3344	373.5	32.8	32.1	-0.5	9.2	-17.3
Electronic instruments.....	3345	409.1	9.4	6.4	-2.7	5.3	-1.1
Magnetic media manufacturing and reproduction.....	3346	25.5	10.7	-1.3	-10.8	-2.3	-1.0
Electrical equipment and appliances.....	335	361.9	5.6	5.3	-0.3	2.3	-2.9
Electric lighting equipment.....	3351	45.6	1.6	-0.1	-1.7	-0.1	0.0
Household appliances.....	3352	59.9	0.0	0.1	0.1	-0.6	-0.7
Electrical equipment.....	3353	137.0	-3.8	-2.7	1.2	0.7	3.5
Other electrical equipment and components.....	3359	119.4	17.8	15.6	-1.9	5.4	-8.8
Transportation equipment.....	336	1,348.0	15.7	17.8	1.8	2.1	-13.3
Motor vehicles.....	3361	153.1	26.1	39.9	11.0	10.3	-21.2
Motor vehicle bodies and trailers.....	3362	109.0	5.5	17.3	11.2	6.4	-9.3
Motor vehicle parts.....	3363	424.8	17.1	27.4	8.8	4.0	-18.4
Aerospace products and parts.....	3364	481.4	7.5	2.6	-4.5	0.3	-2.3
Railroad rolling stock.....	3365	19.0	11.0	-7.1	-16.3	0.0	7.6
Ship and boat building.....	3366	126.6	3.9	-0.6	-4.4	-2.3	-1.7
Other transportation equipment.....	3369	34.1	2.6	-12.1	-14.3	-10.1	2.3
Furniture and related products.....	337	385.4	6.7	-1.6	-7.9	-4.6	-3.0
Household and institutional furniture.....	3371	246.9	10.5	0.1	-9.4	-5.1	-5.2
Office furniture and fixtures.....	3372	101.5	0.9	-4.4	-5.3	-3.8	0.6
Other furniture-related products.....	3379	37.0	2.9	-1.9	-4.6	-3.8	-2.0
Miscellaneous manufacturing.....	339	620.3	8.3	4.0	-4.0	3.6	-0.3
Medical equipment and supplies.....	3391	312.7	6.5	2.6	-3.6	4.1	1.4
Other miscellaneous manufacturing.....	3399	307.6	10.7	5.9	-4.4	3.0	-2.7

**Table 2. Average annual percent change in output per hour, unit labor costs, and related data, 1987-2010**

Industry	NAICS code	Average annual percent change, 1987-2010				
		Output per Hour	Output	Hours	Labor compensation	Unit labor costs
<b>Manufacturing</b>						
Food.....	311	1.1	1.3	0.2	3.0	1.7
Animal food.....	3111	2.6	1.8	-0.7	3.2	1.3
Grain and oilseed milling.....	3112	2.1	1.3	-0.8	2.2	0.9
Sugar and confectionery products.....	3113	1.0	-0.4	-1.4	1.9	2.2
Fruit and vegetable preserving and specialty.....	3114	1.1	1.1	0.0	2.9	1.8
Dairy products.....	3115	1.8	1.1	-0.7	3.2	2.2
Animal slaughtering and processing.....	3116	1.0	2.1	1.1	3.5	1.4
Seafood product preparation and packaging.....	3117	1.1	0.2	-0.9	2.5	2.3
Bakeries and tortilla manufacturing.....	3118	0.5	0.2	-0.3	2.1	1.8
Other food products.....	3119	0.5	1.9	1.4	4.2	2.2
Beverages and tobacco products.....	312	0.9	-0.3	-1.2	1.2	1.6
Beverages.....	3121	2.1	1.4	-0.7	1.8	0.4
Tobacco and tobacco products.....	3122	1.4	-3.2	-4.6	-1.0	2.2
Textile mills.....	313	3.5	-2.8	-6.1	-3.2	-0.4
Fiber, yarn, and thread mills.....	3131	3.2	-2.4	-5.4	-3.1	-0.7
Fabric mills.....	3132	4.6	-2.7	-6.9	-3.2	-0.5
Textile and fabric finishing and coating mills.....	3133	1.4	-3.6	-5.0	-3.2	0.5
Textile product mills.....	314	0.9	-1.9	-2.8	0.1	2.0
Textile furnishings mills.....	3141	0.5	-2.6	-3.0	-0.7	1.9
Other textile product mills.....	3149	2.1	-0.6	-2.6	1.2	1.7
Apparel.....	315	-1.1	-8.1	-7.1	-6.0	2.3
Apparel knitting mills.....	3151	-0.1	-7.2	-7.1	-6.4	0.9
Cut and sew apparel.....	3152	-1.3	-8.4	-7.2	-6.0	2.5
Accessories and other apparel.....	3159	-2.0	-7.2	-5.2	-4.7	2.6
Leather and allied products.....	316	2.0	-4.6	-6.5	-3.2	1.5
Leather and hide tanning and finishing.....	3161	1.5	-3.7	-5.1	-3.4	0.3
Footwear.....	3162	2.7	-5.8	-8.3	-4.2	1.7
Other leather products.....	3169	0.3	-4.0	-4.3	-1.7	2.5
Wood products.....	321	1.5	-0.9	-2.3	1.1	2.0
Sawmills and wood preservation.....	3211	2.7	-0.1	-2.7	0.6	0.8
Plywood and engineered wood products.....	3212	1.0	-1.3	-2.3	0.5	1.8
Other wood products.....	3219	1.1	-1.1	-2.1	1.5	2.7
Paper and paper products.....	322	1.9	-0.2	-2.0	1.2	1.3
Pulp, paper, and paperboard mills.....	3221	3.0	-0.4	-3.3	0.4	0.8
Converted paper products.....	3222	1.3	0.0	-1.3	1.8	1.8
Printing and related support activities.....	323	1.3	-0.6	-1.9	0.6	1.3
Printing and related support activities.....	3231	1.3	-0.6	-1.9	0.6	1.3
Petroleum and coal products.....	324	2.7	1.2	-1.5	3.7	2.5
Petroleum and coal products.....	3241	2.7	1.2	-1.5	3.7	2.5
Chemicals.....	325	1.6	0.7	-0.9	3.0	2.3
Basic chemicals.....	3251	2.6	0.3	-2.2	1.8	1.5
Resin, rubber, and artificial fibers.....	3252	2.5	0.5	-2.0	1.7	1.2
Agricultural chemicals.....	3253	2.7	0.5	-2.1	1.8	1.3
Pharmaceuticals and medicines.....	3254	0.0	2.0	2.1	6.0	3.9
Paints, coatings, and adhesives.....	3255	1.0	-0.8	-1.8	1.9	2.7
Soaps, cleaning compounds, and toiletries.....	3256	2.6	1.7	-0.9	2.3	0.6
Other chemical products and preparations.....	3259	2.5	0.2	-2.3	1.4	1.2
Plastics and rubber products.....	326	2.0	1.1	-0.9	2.3	1.1
Plastics products.....	3261	1.9	1.4	-0.5	2.7	1.3
Rubber products.....	3262	2.4	0.1	-2.2	1.0	0.8
Nonmetallic mineral products.....	327	1.0	-0.4	-1.4	1.3	1.7
Clay products and refractories.....	3271	0.7	-1.9	-2.6	-0.7	1.2
Glass and glass products.....	3272	2.3	-0.1	-2.3	0.6	0.7

**Table 2. Average annual percent change in output per hour, unit labor costs, and related data, 1987-2010 — Continued**

Industry	NAICS code	Average annual percent change, 1987-2010				
		Output per Hour	Output	Hours	Labor compensation	Unit labor costs
Cement and concrete products.....	3273	0.1	-0.5	-0.5	2.0	2.5
Lime and gypsum products.....	3274	1.0	-1.1	-2.1	1.7	2.9
Other nonmetallic mineral products.....	3279	1.8	0.7	-1.0	2.0	1.3
Primary metals.....	331	2.5	-0.2	-2.6	0.6	0.8
Iron and steel mills and ferroalloy production.....	3311	4.5	1.5	-2.8	0.2	-1.4
Steel products from purchased steel.....	3312	-0.6	-1.7	-1.1	1.3	3.0
Alumina and aluminum production.....	3313	2.5	-0.3	-2.8	0.4	0.8
Other nonferrous metal production.....	3314	1.0	-1.4	-2.4	1.9	3.3
Foundries.....	3315	2.4	-0.6	-2.9	0.4	1.0
Fabricated metal products.....	332	1.3	0.5	-0.9	2.2	1.7
Forging and stamping.....	3321	2.7	0.9	-1.8	1.6	0.7
Cutlery and hand tools.....	3322	2.2	-0.6	-2.7	0.4	1.0
Architectural and structural metals.....	3323	0.7	0.3	-0.4	2.8	2.4
Boilers, tanks, and shipping containers.....	3324	0.9	-0.3	-1.2	1.5	1.8
Hardware.....	3325	0.9	-3.3	-4.2	-1.7	1.7
Spring and wire products.....	3326	2.7	-0.1	-2.7	1.2	1.3
Machine shops and threaded products.....	3327	2.0	2.3	0.3	3.6	1.3
Coating, engraving, and heat treating metals.....	3328	2.7	2.3	-0.4	2.7	0.4
Other fabricated metal products.....	3329	1.2	0.0	-1.2	1.5	1.6
Machinery.....	333	2.4	1.1	-1.3	1.7	0.7
Agriculture, construction, and mining machinery.....	3331	2.8	2.8	0.0	2.7	-0.1
Industrial machinery.....	3332	2.5	0.9	-1.6	1.8	0.9
Commercial and service industry machinery.....	3333	1.4	-0.7	-2.1	0.5	1.2
HVAC and commercial refrigeration equipment.....	3334	2.3	1.0	-1.3	1.9	1.0
Metalworking machinery.....	3335	1.9	-0.4	-2.2	0.7	1.1
Turbine and power transmission equipment.....	3336	1.7	0.8	-0.9	1.2	0.4
Other general purpose machinery.....	3339	2.6	1.1	-1.5	2.4	1.3
Computer and electronic products.....	334	11.2	8.3	-2.6	0.8	-6.9
Computer and peripheral equipment.....	3341	20.9	15.9	-4.2	-3.8	-17.0
Communications equipment.....	3342	5.4	2.3	-2.9	0.3	-2.0
Audio and video equipment.....	3343	2.1	-2.7	-4.7	-1.9	0.8
Semiconductors and electronic components.....	3344	16.5	14.2	-1.9	1.2	-11.4
Electronic instruments.....	3345	4.0	1.8	-2.1	2.1	0.2
Magnetic media manufacturing and reproduction.....	3346	3.2	1.3	-1.8	0.0	-1.2
Electrical equipment and appliances.....	335	2.4	-0.4	-2.7	0.9	1.2
Electric lighting equipment.....	3351	1.9	-0.8	-2.6	0.9	1.7
Household appliances.....	3352	3.5	-0.1	-3.5	-0.8	-0.7
Electrical equipment.....	3353	2.0	-0.6	-2.5	0.8	1.4
Other electrical equipment and components.....	3359	2.2	-0.2	-2.4	1.6	1.8
Transportation equipment.....	336	3.1	1.1	-2.0	0.7	-0.4
Motor vehicles.....	3361	3.9	0.9	-2.9	-0.3	-1.2
Motor vehicle bodies and trailers.....	3362	1.0	0.2	-0.8	2.6	2.4
Motor vehicle parts.....	3363	3.4	1.7	-1.6	0.0	-1.7
Aerospace products and parts.....	3364	2.0	-0.3	-2.3	0.7	1.1
Railroad rolling stock.....	3365	5.3	3.7	-1.5	3.2	-0.5
Ship and boat building.....	3366	2.5	0.6	-1.8	2.4	1.8
Other transportation equipment.....	3369	6.1	5.5	-0.5	4.3	-1.2
Furniture and related products.....	337	1.5	-0.9	-2.4	0.8	1.7
Household and institutional furniture.....	3371	1.6	-1.2	-2.8	0.5	1.8
Office furniture and fixtures.....	3372	1.1	-0.9	-1.9	1.1	2.0
Other furniture-related products.....	3379	2.0	1.0	-1.0	1.8	0.8
Miscellaneous manufacturing.....	339	3.1	2.5	-0.6	3.9	1.4
Medical equipment and supplies.....	3391	3.6	4.6	1.0	5.5	0.9
Other miscellaneous manufacturing.....	3399	2.4	0.6	-1.8	2.4	1.8