

2011

ECONOMIC IMPACT ANALYSIS



Wright-Patterson
Air Force Base
Dayton, Ohio

THIS PAGE WAS INTENTIONALLY LEFT BLANK

TABLE OF CONTENTS

PREFACE 2

 Commander’s Foreword.....2

 Wright-Patterson’s Heritage3

ECONOMIC IMPACT TABLES 5

 Table 1.....5

 Table 2.....6

 Table 3.....7

 Table 4.....8

 Table 5.....8

APPENDICES 9

 Analysis Methodology.....9

 Summary of Capital Assets.....11

 Personnel Distribution.....12

 Military & Civilian Payroll and Assignment Trends13

 Military Retiree Payments.....14

 Combined Federal Campaign Contributions14

 Summary of Impact Aid Payments.....15

 NMUSAF Visitation Trends15

TABLE OF FIGURES

Figure 1: Economic Area for Wright-Patterson AFB.....9

Figure 2: Wright-Patterson AFB’s Capital Assets.....11

Figure 3: Distribution of Military Personnel by Branch of Service12

Figure 4: Distribution of Civilians by Personnel System12

Figure 5: Total Military & Civilian Annual Payroll.....13

Figure 6: Total Military & Civilian Personnel Assigned.....13

Figure 7: Total Military Retiree Payments by Branch of Service14

Figure 8: Total CFC Contributions from Wright-Patterson AFB.....14

Figure 9: Summary of Dayton, OH Impact Aid Payments15

Figure 10: Summary of National Museum of the U.S. Air Force Visitation.....15

PREFACE

Commander's Foreword

The 88th Air Base Wing (88 ABW) is the host unit for Wright-Patterson Air Force Base with more than 5,300 personnel assigned to the wing. All of our military, civilians and contractors play a key role in helping our tenant units achieve their mission objectives. This internal partnership enhances our strength on the base, and in Ohio's Miami Valley.

Whether we are providing vital infrastructure and services to operate the base or training and processing the 1,000 Airmen we deploy annually to all corners of the world, the 88 ABW is the cornerstone of the base's mission success. Our many mission partners – such as the Aeronautical Systems Center, Air Force Research Laboratory and Air Force Materiel Command Headquarters (AFMC) – provide critical advanced research, acquisition, intelligence and combat support, enabling the Air Force to fly, fight and win in the air, space, and cyberspace.



The 88 ABW also has the lead responsibility to liaise with the surrounding community. Numerous private and public organizations along with 20-plus cities, towns, and villages in the 16-county Miami-Valley region provide Wright-Patt outstanding community support. The Miami Valley shows its support in countless ways; among them, the special "Hometown Heroes" baseball games at the Dayton Dragon's Fifth Third Field, and welcoming home our Airmen at "Heroes-Welcoming-Heroes" events. As a good community partner, we return their support by hosting the annual AFMC "Freedom's Call TATTOO", a gratis night of entertainment, aircraft fly-overs, and the best fireworks display in southwest Ohio. We also host the United States Air Force Marathon every September to celebrate our service's birth, September 17, 1947. The 88 ABW hosts many other events throughout the year that reach out to our wonderful community neighbors.

In addition to being a community partner, Wright-Patterson is also an economic powerhouse for Ohio. In 2011, the installation economic impact was estimated at approximately \$4.7 billion with more than 29,000 people working on the installation at any given time. We continue to reach into the community and provide information on how to partner with our Air Force team. The future remains bright for Wright-Patterson AFB and the Miami Valley as we continue to educate and develop the next generation of Wright-Patterson and community leaders!

CASSIE B. BARLOW, Colonel, USAF
Commander, 88th Air Base Wing

Wright-Patterson's Heritage

Wright-Patterson AFB near Dayton, Ohio, traces its origin directly from the Wright brothers' pioneering flights in 1904 and 1905 at the Huffman Prairie Flying Field located in the middle of the installation. Its past, present and future are all inextricably linked with the Wright brothers' legacy. Dayton was the Wright brothers' home and Daytonians consider their city the "Birthplace of Aviation". The Wrights' early years, their bicycle shops, their printing business, and their early aviation efforts are evident throughout the greater Dayton area. Just off the end of Wright-Patterson's active runway, a replica of the Wright brothers' 1905 hangar overlooks the Huffman Prairie Flying Field. Here they established their first flying field, developed the first practical airplane, and in their own words, "really learned to fly". The Flying Field has been designated a National Historic Landmark and is part of the Dayton Aviation Heritage National Historical Park.

The installation itself has been a leader in military aviation since World War I. Aviation research and development began to flourish at Wright-Patterson when the U.S. entered World War I. Wilbur Wright Field was established in the summer of 1917 as a pilot training school at the site of Wright-Patterson's present flight line. In the fall of 1917, McCook Field was established as an Air Service engineering center. McCook Field was located near downtown Dayton at what is now the intersection of State Route 4 and Interstate 75. In 1927, a new aerodrome and research complex were constructed on land donated by the citizens of Dayton to replace the overcrowded McCook Field. Named Wright Field in honor of both brothers, it is now part of Area B.

Wright-Patterson's logistics heritage also dates from World War I. The Fairfield Aviation General Supply Depot was established in 1917 adjacent to Wilbur Wright Field. The Fairfield Air Depot, as it became known, was a major Army Air Corps depot through the end of World War II. In 1931, the area encompassing the Fairfield Air Depot, Wilbur Wright Field, and the Huffman Prairie Flying Field, was renamed Patterson Field in honor of Lt. Frank Stuart Patterson who died in 1918 when his DH-4 crashed on the airfield during a flight test.

In 1948, Wright and Patterson Fields merged to create Wright-Patterson AFB. The 88 ABW has been the host organization most of the period since the merger. It has provided base operating support for the installation since 1944.

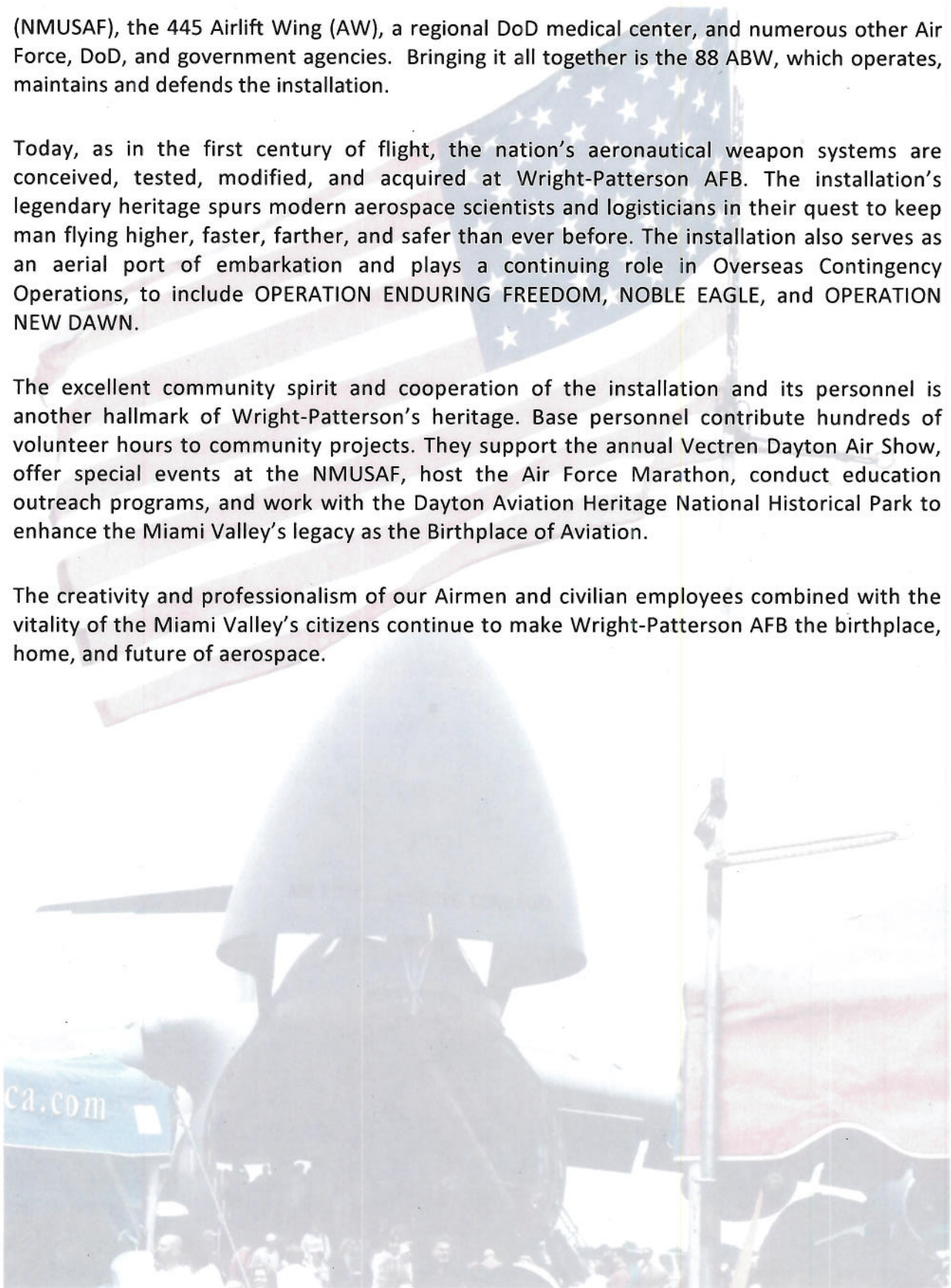
Wright-Patterson is one of the largest, most diverse, and organizationally complex bases in the Air Force. Its missions range from acquisition and logistics management, to research and development, education, flight operations, and an assortment of other defense and non-defense activities. Wright-Patterson is home to the Air Force Materiel Command (AFMC), the Aeronautical Systems Center (ASC), the Air Force Research Laboratory (AFRL), the Air Force Security Assistance Center (AFSAC), the Air Force Institute of Technology (AFIT), the National Air and Space Intelligence Center (NASIC), the National Museum of the United States Air Force

(NMUSAF), the 445 Airlift Wing (AW), a regional DoD medical center, and numerous other Air Force, DoD, and government agencies. Bringing it all together is the 88 ABW, which operates, maintains and defends the installation.

Today, as in the first century of flight, the nation's aeronautical weapon systems are conceived, tested, modified, and acquired at Wright-Patterson AFB. The installation's legendary heritage spurs modern aerospace scientists and logisticians in their quest to keep man flying higher, faster, farther, and safer than ever before. The installation also serves as an aerial port of embarkation and plays a continuing role in Overseas Contingency Operations, to include OPERATION ENDURING FREEDOM, NOBLE EAGLE, and OPERATION NEW DAWN.

The excellent community spirit and cooperation of the installation and its personnel is another hallmark of Wright-Patterson's heritage. Base personnel contribute hundreds of volunteer hours to community projects. They support the annual Vectren Dayton Air Show, offer special events at the NMUSAF, host the Air Force Marathon, conduct education outreach programs, and work with the Dayton Aviation Heritage National Historical Park to enhance the Miami Valley's legacy as the Birthplace of Aviation.

The creativity and professionalism of our Airmen and civilian employees combined with the vitality of the Miami Valley's citizens continue to make Wright-Patterson AFB the birthplace, home, and future of aerospace.



ECONOMIC IMPACT TABLES

Table 1

Personnel by Classification and Housing Location

CLASSIFICATION	LIVING ON BASE	LIVING OFF BASE	TOTAL
1. APPROPRIATED FUND MILITARY			
Active Duty			
Air Force	517	6,615	7,132
Army	43	0	43
Navy/Marine	14	8	22
Air Force Reserve (AFR)/Air National Guard (ANG)	0	2,047	2,047
Non-Extended Active Duty AFR/ANG	0	20	20
Trainees/Cadets	122	0	122
TOTAL:	696	8,690	9,386

2. ACTIVE DUTY MILITARY DEPENDENTS			
Air Force	2,008	15,215	17,223
Army	109	0	109
Navy/Marine	41	18	59
Air Force Reserve (AFR)/Air National Guard (ANG)	0	4,708	4,708
Non-Extended Active Duty AFR/ANG	0	46	46
Trainees/Cadets	0	0	0
TOTAL:	2,158	19,987	22,145

3. APPROPRIATED FUND CIVILIANS			
General Schedule (GS)			9,936
National Security Personnel System (NSPS)			187
Federal Wage Board (FWS)			546
Defense Civilian Intelligence Personnel System (DCIPS); NASIC			2,439
Laboratory Demonstration Project (Lab Demo)			1,834
Senior Executive Service (SEC)/Senior Scientist (ST)			23
Defense Commissary Agency (DeCA)			123
GS Physicians and Dentists (GP)			3
Defense Civilian Intelligence (IA)			2
Other (SES, Scientific and Professional Positions)			1,483
		TOTAL:	16,576

4. NON-APPROPRIATED FUND, CONTRACT CIVILIANS AND PRIVATE BUSINESS			
Air Force Civilian Non-appropriated fund employees (NAF)			672
Army & Air Force Exchange Service civilian employees (AAFES)			241
Contract Civilians (not elsewhere included)			2,760
Private Businesses On Base, By Type:			102
Branch Banks/Credit Union			26
Office Runway (Cincinnati Association for the Blind)			8
Hope Hotel			50
National Aviation Hall of Fame			4
Other Civilian Vendors			14
		TOTAL:	3,775

TOTAL ASSIGNED PERSONNEL: 29,737

TOTAL PERSONNEL INCLUDING DEPENDENTS: 51,882

Table 2
Annual Payroll by Classification and Housing Location

CLASSIFICATION	LIVING ON BASE (\$)	LIVING OFF BASE (\$)	TOTAL (\$)
1. APPROPRIATED FUND MILITARY			
Active Duty			
Air Force	\$ 22,249,588	\$ 503,214,283	\$525,463,871
Army	\$ 2,365,000		\$2,365,000
Navy/Marine	\$ 770,000	\$ 440,000	\$1,210,000
Air Force Reserve (AFR)/Air National Guard (ANG)	\$ -	\$ 33,700,000	\$33,700,000
Non-Extended Active Duty AFR/ANG	\$ -	\$ 800,000	\$800,000
Trainees/Cadets	\$ 4,880,000	\$ -	\$4,880,000
TOTAL:	\$ 30,264,588	\$ 538,154,283	\$568,418,871

2. APPROPRIATED FUND CIVILIANS			
General Schedule (GS)			\$ 932,778,910
National Security Personnel System (NSPS)			\$ 18,218,787
Federal Wage Board (FWS)			\$ 29,954,985
Defense Commissary Agency (DeCA)			\$ 5,151,700
Defense Civilian Intelligence Personnel System (DCIPS), NASIC			\$ 216,789,799
Other (SES, Scientific and Professional Positions)			\$ 172,205,076
Laboratory Demonstration Project (Lab Demo)			\$ 95,000,000
Senior Executive Service (SEC)/Senior Scientist (ST)			\$ 25,936,843
GS Physicans and Dentists			\$ 375,000
Defense Civilian Intelligence (IA)			\$ 260,000
TOTAL:			\$ 1,496,671,100

3. NON-APPROPRIATED, FUND CONTRACT CIVILIANS AND PRIVATE BUSINESS			
Air Force Civilian Non-appropriated fund employees (NAF)			\$ 850,153
Army & Air Force Exchange Service civilian employees (AAFES)			\$ 5,763,153
Contract Civilians (not elsewhere included)			\$ 377,766,468
Private Businesses On Base, By Type:			\$ 2,736,005
Branch Banks/Credit Union			\$ 880,859
Office Runway (Cincinnati Association for the Blind)			\$ 334,258
Hope Hotel			\$ 800,000
National Aviation Hall of Fame			\$ 115,444
Other Civilian Vendors			\$ 605,444
TOTAL:			\$ 387,115,779

TOTAL ANNUAL PAYROLL: \$ 2,452,205,750

Table 3**Expenditures for Construction, Services, and Procurement of Materials, Equipment, and Supplies**

CLASSIFICATION	ACTUAL ANNUAL EXPENDITURES
1. CONSTRUCTION	
Military Construction Program (MILCON)	\$ 116,328,461
Non-Appropriated Fund Construction (NAF)	\$ 967,000
Military Family Housing (MFH)	\$ -
Military Family Housing Operations and Maintenance (O&M)	\$ -
Construction Related Operations and Maintenance (O&M)	\$ 57,366,066
TOTAL:	\$ 174,661,527
2. SERVICES	
Operations and Maintenance Service Contracts (O&M)	\$ 172,729,450
Medical Service Contracts	\$ 36,765,152
Non-Appropriated Fund Service Contracts (NAF)	\$ 14,498
Other Service Contracts	\$ 219,614,069
TOTAL:	\$ 429,123,169
3. PROCUREMENT OF MATERIALS, EQUIPMENT, AND SUPPLIES	
Commissary (DeCA)	\$ 33,263
Base Exchange (AAFES)	\$ 400,000
DoDEA	\$ -
Health (Tri-Care, Government cost only)	\$ 37,093,707
Non-Appropriated Fund (NAF)	\$ 967,000
Education (Impact aid and Tuition Assistance)	\$ 4,783,417
TDY (Military and civilian)	\$ 7,276,326
GPC/Other Materials Equipment & Supplies	\$ 43,359,754
TOTAL:	\$ 93,913,467
TOTAL ANNUAL EXPENDITURES:	\$ 697,698,163

Table 4
Estimate of Number and Dollar Value of Indirect Jobs Created

TYPE OF PERSONNEL	NUMBER OF BASE JOBS	MULTIPLIER	NUMBER OF INDIRECT JOBS
ACTIVE DUTY MILITARY	9,386	0.41	3,848
APPROPRIATED FUND CIVILIANS	16,576	1.57	26,024
OTHER CIVILIANS	3,775	1.57	5,927
TOTAL:	29,737		35,799
ESTIMATED NUMBER OF INDIRECT JOBS CREATED:			35,799
AVERAGE ANNUAL PAY FOR THE LOCAL COMMUNITY:			\$42,410
ESTIMATED ANNUAL DOLLAR VALUE OF JOBS CREATED:			\$1,518,235,590

DATA SOURCES:

Multiplier: LMI Economic Impact Database, Installations and Indirect/Induced Job Multipliers, Feb 95
Avg Annual Pay: Current tables for Average Annual Pay Levels in Metropolitan Areas and Average Annual Pay by city/state are accessible at www.bls.gov.

Table 5
Total Annual Economic Impact Statement

ANNUAL PAYROLL:		
Military		\$ 568,418,871
Federal Civilian		\$ 1,496,671,100
Other Civilian		\$ 387,115,779
	Total	\$ 2,452,205,750
ANNUAL EXPENDITURES:		\$ 697,698,163
ESTIMATED ANNUAL DOLLAR VALUE OF JOBS CREATED:		
Estimated Indirect Jobs Created		35,799
Average Annual Pay		\$42,410
	Total	\$ 1,518,235,590
TOTAL ECONOMIC IMPACT:		\$ 4,668,139,503

APPENDICES

Analysis Methodology

The objective of this Economic Impact Analysis is to quantify Wright-Patterson AFB's local economic activity within fiscal year 2011 (FY11). FY11 covers the time period of October 1, 2010 – September 30, 2011. The local area is defined by the U.S Office of Management and Budget and is called a Metropolitan Statistical Area (MSA). The definition of Wright-Patterson AFB's MSA has varied throughout past analyses, but remained the same between FY07 and FY11. The MSA consists of five surrounding counties: Clark, Greene, Miami, Montgomery and Preble. The MSA is illustrated in Figure 1 below.

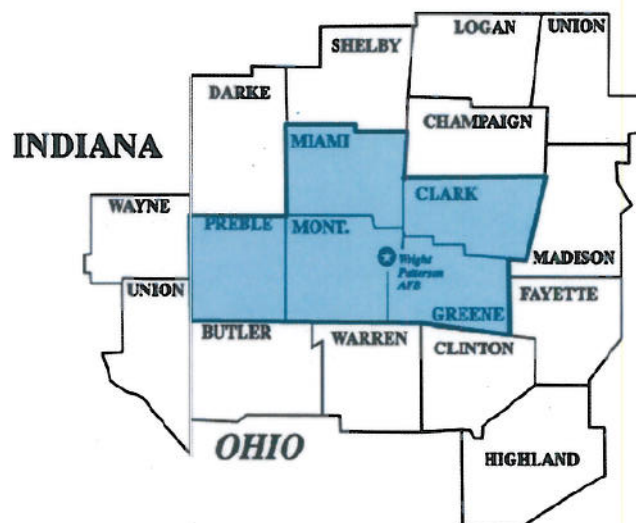


Figure 1: Economic Area for Wright-Patterson AFB

Table 1: Personnel by Classification and Housing Location

The headcount of military personnel was derived from an Economic Resource Impact Statement (ERIS) from the Defense Joint Military Pay System (DJMS) report furnished by the 88 CPTS. The number of military personnel dependents living on base was provided by the 88 ABW Civil Engineering Office for Housing (88 ABW/CEH). The number of Air Force off base dependents was provided by the Base Military Personnel Flight (MPF). The Air National Guard and Reserve numbers were collected from the 445 FSS/FSO. The numbers of dependents for the other branches of services were calculated based upon an average ratio of active duty personnel to dependents. Civilian headcount was collected from the Civilian Personnel Flight (88 FSF/FSMC) and various tenant organizations. Contract civilian headcount was derived from various tenant organizations.

Table 2: Annual Payroll by Classification and Housing Location

The payroll of military personnel was derived from the ERIS report furnished by the 88 CPTS and the Navel Health Research Center. The Air National Guard and Reserve payrolls were collected from the 445 FSS/FSO. The majority of the appropriated fund civilian input was provided by the 88 FSF/FFMM office. The personnel and payroll for civilian contractors were provided by various tenant organizations.

Table 3: Expenditures for Construction, Services, and Procurement

Military construction spending was collected from the 88 ABW/CE, US Army Corps of Engineers (USACoE) and various tenant organizations. The USACoE was the only base organization with NAF spending in FY11. Several organizations provided FY11 totals for O&M Construction spending. Other construction expenditures were provided by ASC/PK, USACoE and Government Accountability Office (GAO). The amount for Service Contracts was calculated by ASC/PK, and several tenant organizations. The amount for Other Services contracts consists of input from the ASC/PK and Enterprise Logistics Directorate (ELD). Education spending was a combination of the Education and Training Flight and Federal Government Impact Aid. Data for the GPC and other spending came from ASC/PK.

Table 4: Estimate of Number and Dollar Value of Indirect Jobs Created

The multipliers in this table were taken from the Economic Impact Database owned by the Logistics Management Institute. The average annual pay was taken from the Bureau of Labor and Statistics website. This methodology is required according to Chapter 8 of AFMAN 65-506.

Table 5: Total Annual Economic Impact Estimate

This table is simply a summary of Tables 1 – 4. Wright-Patterson AFB's total economic impact upon the Dayton MSA is \$4,668,139,503.

Summary

This Economic Impact Analysis was prepared by the Center of Expertise (CoE), Buckley AFB and coordinated with the 88 CPTS/FMA, Wright-Patterson AFB, Ohio. Questions or comments concerning the statistics or data contained in this analysis may be addressed to Mr. Ken Charles, (937-522-2537), kenneth.charles@wpafb.af.mil).

Summary of Capital Assets

CAPITAL ASSETS	
<i>(As of: 30 September 2011)</i>	
Building Category	Square Feet
Housing (Includes detached garages and storage buildings)	276,389
Community (Includes commissary, BX, BAQ, VAQ/VOQ, and recreation)	2,640,411
Research and Development	5,788,025
Hospital	1,127,075
All Other Buildings (Includes Operations & Training, Supply, Maintenance & Production, and Administration)	8,736,212
Other Structures and Facilities	0
Utilities and Ground Improvement	0
TOTAL:	18,568,112

Dormitory/Temporary Quarters	Number of Units	Bed Capacity
Airman/NCO	6	592
Visiting Officer/Airman Quarters	8	441
Temporary Lodging Facilities	21	132
Compassionate Care Facilities	2	32
TOTAL:	51	1,197

Land	Acres
Fee Owned	7,629
Easements	431
Right of Way	83
Leased	2
TOTAL:	8,145

Runways	Linear Feet
Area A	19,600
Area B (inactive)	7,147
TOTAL:	26,747

Facilities Data	Number of Buildings
Buildings	595
Family Housing	127
TOTAL:	722

Figure 2: Wright-Patterson AFB's Capital Assets

Personnel Distribution

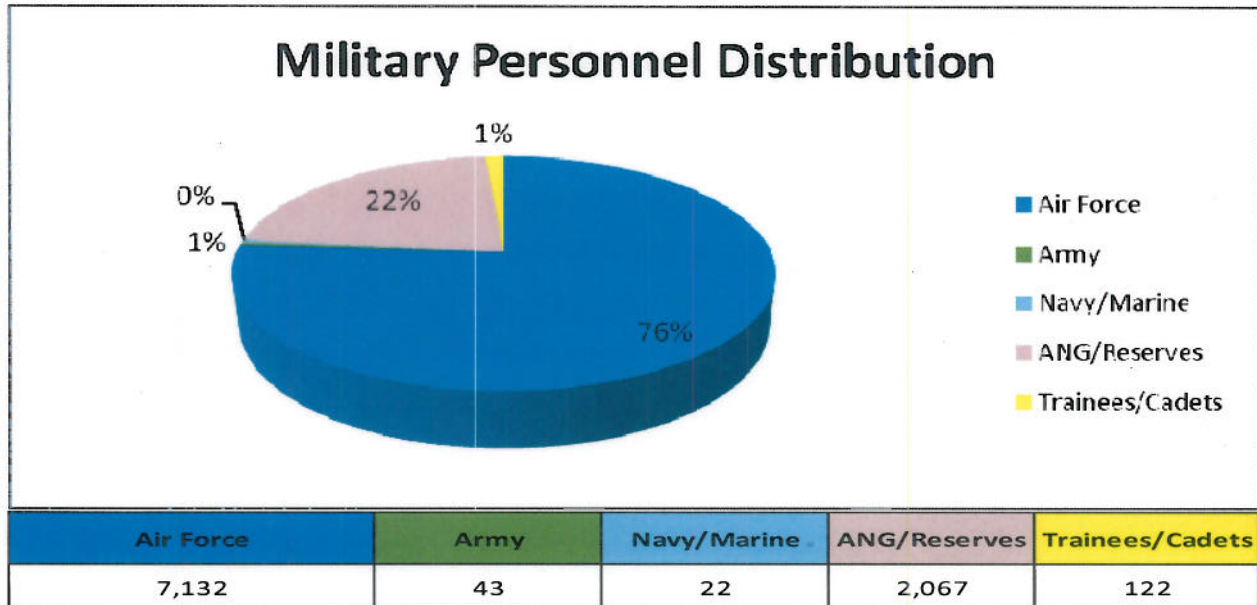


Figure 3: Distribution of Military Personnel by Branch of Service

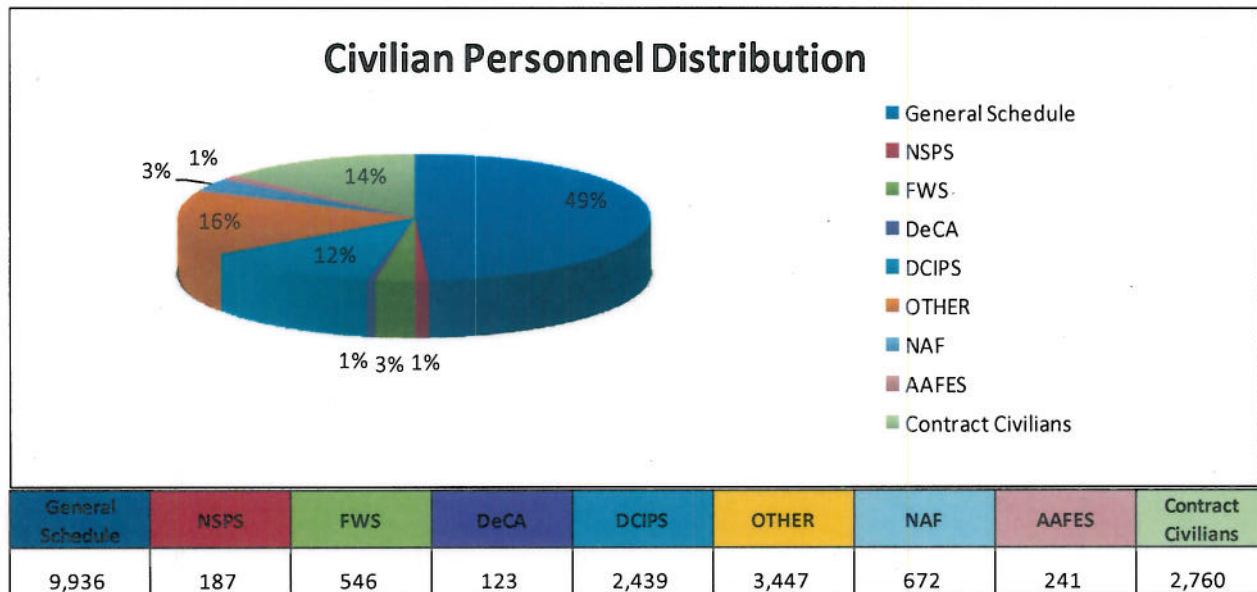


Figure 4: Distribution of Civilians by Personnel System

APF Military & Civilian Payroll and Assignment Trends

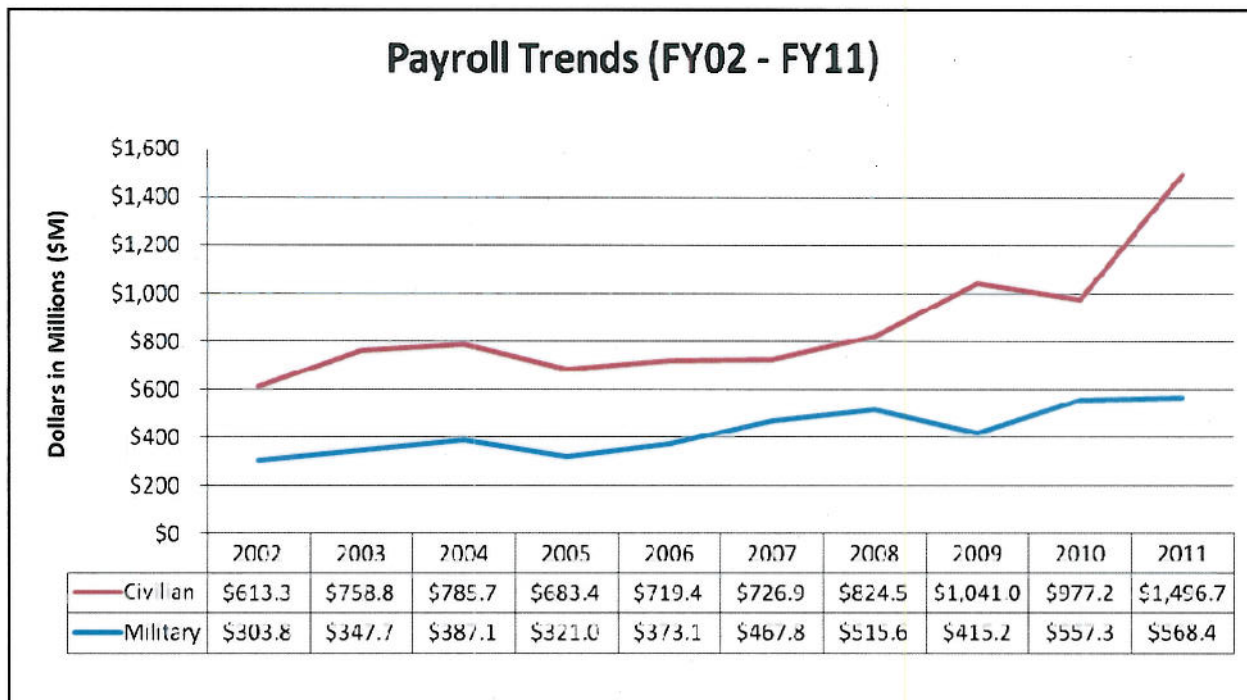


Figure 5: Total Military & Civilian Annual Payroll

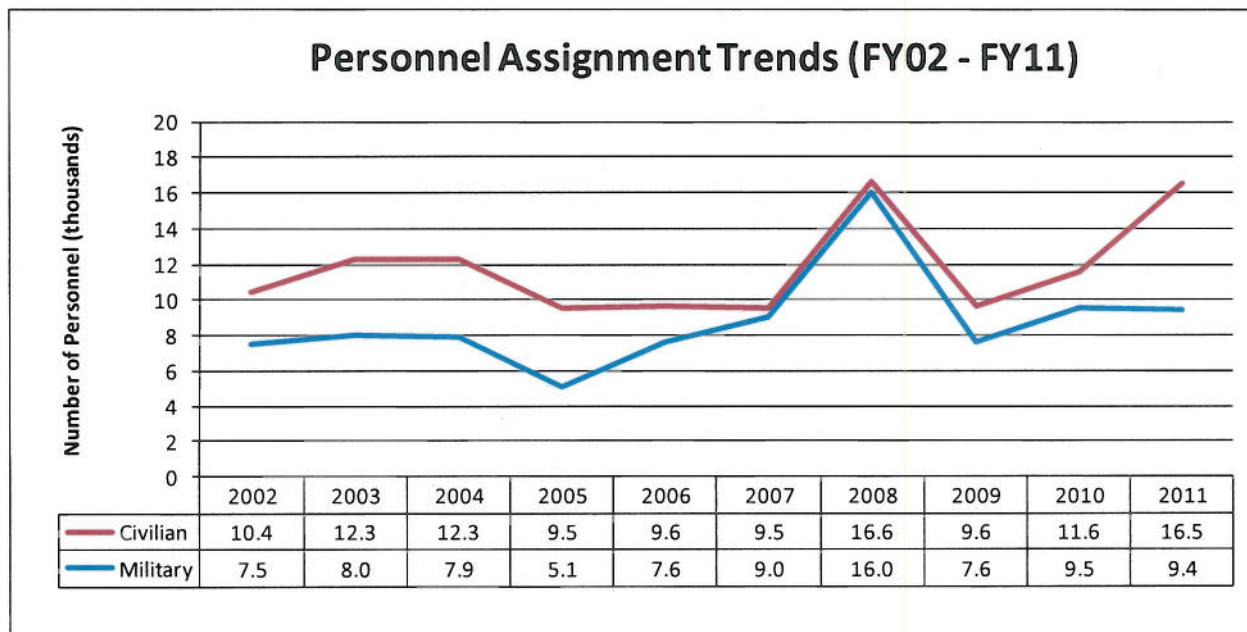
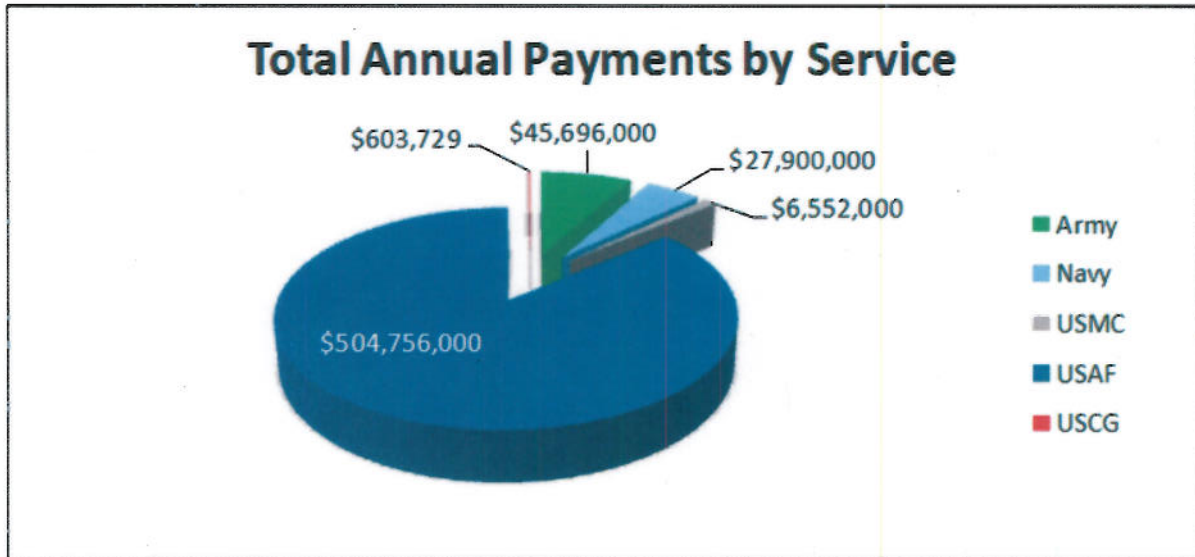


Figure 6: Total Military & Civilian Personnel Assigned

Military Retiree Payments



Service	Army	Navy	USMC	USAF	USCG
Number of Recipients	2,155	1,324	308	16,848	34
Annual Disbursement Amount	\$ 45,696,000	\$ 27,900,000	\$ 6,552,000	\$ 504,756,000	\$ 603,729

Figure 7: Total Military Retiree Payments by Branch of Service

Combined Federal Campaign Contributions

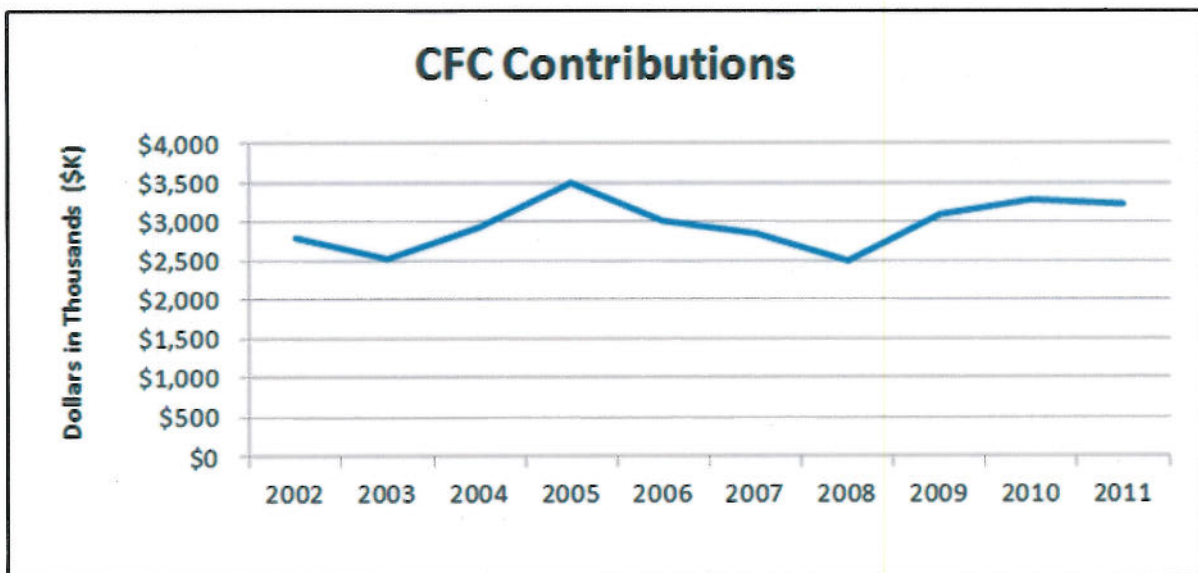


Figure 8: Total CFC Contributions from Wright-Patterson AFB

Summary of Impact Aid Payments

IMPACT AID SUMMARY		
School District	County	Amount
Mad River Local	Montgomery	\$ 529,378
Fairborn City	Greene	\$ 273,425
Beavercreek Local	Greene	\$ 386,198
Huber Heights City	Montgomery	\$ 20,493
Bellbrook-Sugarcreek Local	Greene	\$ 30,363
TOTAL Impact Aid		\$ 1,239,857

Figure 9: Summary of Dayton, OH Impact Aid Payments

NMUSAF Visitation Trends

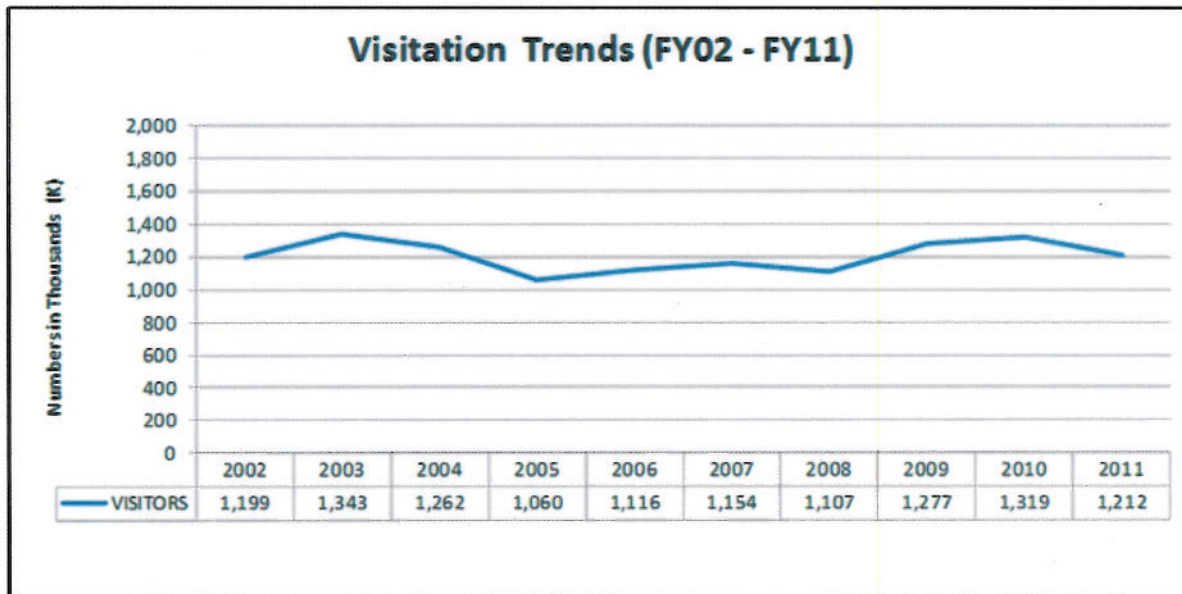


Figure 10: Summary of National Museum of the U.S. Air Force Visitation

THIS PAGE WAS INTENTIONALLY LEFT BLANK

Wright-Patterson

Air Force Base

Dayton, Ohio