



# 2010 Fact Book

National Cancer Institute

# 2010 Fact Book

U.S. DEPARTMENT OF HEALTH AND HUMAN SERVICES

National Institutes of Health

---

The information set forth in this publication is compiled and amended annually by the budget and finance staff of the National Cancer Institute and is intended primarily for the use by members of the Institute and others involved in the administration and management of the National Cancer Program.

Questions regarding any of the information contained herein may be directed to the Office of Budget and Finance, National Cancer Institute, 9000 Rockville Pike, Bethesda, Maryland, 20892

This document is also available online on the Office of Budget and Finance homepage (<http://obf.cancer.gov/>) on the National Cancer Institute's website (<http://www.cancer.gov>).

# TABLE OF CONTENTS

---

|                            |  |
|----------------------------|--|
| <b>Executive Summary</b>   | Fiscal Year 2010 Annual Report.....iii   |
| <b>Organization</b>        | Director's Biography ..... O-1<br>Former Directors of the NCI..... O-2<br>National Cancer Advisory Board..... O-4<br>Boards of Scientific Counselors and Advisors..... O-8<br>President's Cancer Panel ..... O-9<br>Scientific Program Leaders..... O-9<br>Clinical Trials and Translational Research Advisory Committee O-10<br>NCI Director's Consumer Liaison Group..... O-13<br>Operational Organization Charts:<br>National Cancer Institute ..... O-14<br>Office of the Director..... O-15<br>OD I: Office of Management ..... O-16<br>OD II: Center for Biomedical Informatics and Information<br>Technology ..... O-17<br>OD II: Office of Science Planning and Assessment..... O-17<br>OD III: Office of Communications and Education ..... O-18<br>OD IV: Center to Reduce Cancer Health Disparities ..... O-19<br>OD IV: Center for Strategic and Scientific Initiatives ..... O-19<br>Center for Cancer Research..... O-20<br>Division of Cancer Biology ..... O-22<br>Division of Cancer Epidemiology and Genetics..... O-23<br>Division of Cancer Prevention..... O-24<br>Division of Cancer Control and Population Sciences ..... O-25<br>Division of Cancer Treatment and Diagnosis ..... O-26<br>Division of Extramural Activities ..... O-27 |
| <b>Cancer Statistics</b>   | Links to Cancer Statistics ..... C-1   |
| <b>Budget Data</b>         | NCI Budget..... B-1<br>Program Structure ..... B-2<br>Extramural Funds ..... B-3<br>NCI Obligations by Mechanism..... B-4<br>Division Obligations by Mechanism ..... B-5<br>NIH Management Fund, Service & Supply Fund and GSA Rent.. B-6<br>Special Sources of Funds ..... B-7<br>Funding for Various Research Areas ..... B-8  |
| <b>Extramural Programs</b> | Research Project Grants:<br>Number of Awards ..... E-1<br>Requested and Awarded ..... E-2<br>Awards by Activity Code ..... E-3<br>Activity Code Descriptions ..... E-4<br>Cancer Centers<br>By State..... E-5<br>Specialized Programs of Research Excellence (SPORE) ..... E-6<br>National Research Service Awards – Pre and Post Doctoral<br>Trainees ..... E-7   |

|  |      |
|--|------|
| Construction/Renovation and Building & Facilities Funding .....  | E-8  |
| Grant and Contract Awards by State .....                         | E-9  |
| Grant and Contract Awards by Country .....                       | E-10 |
| Institutions Receiving More than \$15,000,000 in NCI Support ... | E-11 |

**Historical Trends**

|  |     |
|--|-----|
| Appropriations of the NCI .....                            | H-1 |
| Bypass Budget Requests .....                               | H-2 |
| Comparison of NCI Bypass Requests and Appropriations ..... | H-3 |
| Comparison of Dollars, Positions and Space .....           | H-4 |
| Personnel Resources .....                                  | H-5 |
| AIDS Funding History .....                                 | H-6 |

## Executive Summary

---

### Fiscal Year 2010 Annual Report

#### BUDGET IN REVIEW

This report provides a summary of the distribution of the Fiscal Year 2010 budget among the various National Cancer Institute (NCI) research programs and funding mechanisms, funding policies influencing grant awards, and comparisons with prior year allocations. Additional information on the NCI budget is accessible from the NCI Home Page (<http://www.cancer.gov>).

#### Summary

Funds available to the NCI in FY 2010 totaled over \$5.098 billion, reflecting an increase of 2.6% and \$131 million from the previous fiscal year.

Fiscal highlights from FY 2010 include:

- Of the total NCI budget, 43% of the funds were allocated for Research Project Grants (RPGs).
- The total number of RPGs funded was 5,079 (includes SBIR).
- Almost one-fourth of the RPGs awarded were new (Type 1) or competing renewal (Type 2) awards.
- 1,253 competing RPGs were funded.
- Almost one-third of the total NCI budget supported ongoing non-competing (Type 5) RPGs.
- R01 grants were funded to the 15<sup>th</sup> percentile.
- 207 grants – totaling almost \$86 million – were funded as Small Business Innovation Research (SBIR) and Small Business Technology Transfer (STTR) awards.
- Intramural Research comprised just under 16% of the total NCI budget in FY 2010. Of this amount, 10% was for Labs and Bench Research and 5.8% was for infrastructure and support.

**NCI Dollars by Mechanism for FY 2009 and 2010**  
(in thousands)

|                                     | 2009        | 2010         | Change '09 to '10 |        |
|-------------------------------------|-------------|--------------|-------------------|--------|
|                                     |             |              | Am't              | %      |
| Research Project Grants:            |             |              |                   |        |
| Noncompeting                        | 1,550,906   | 1,536,844    | -14,062           | -0.9%  |
| Admin Supplements                   | 33,257      | 28,947       | -4,310            | -13.0% |
| Competing                           | 457,834     | 516,598      | 58,764            | 12.8%  |
| Subtotal, RPG                       | 2,041,997   | 2,082,389    | 40,392            | 2.0%   |
| SBIR/STTR                           | 91,954      | 85,669       | -6,285            | -6.8%  |
| Total, RPG                          | 2,133,951   | 2,168,058    | 34,107            | 1.6%   |
| Cancer Centers                      | 285,608     | 295,856      | 10,248            | 3.6%   |
| SPOREs                              | 131,360     | 133,810      | 2,450             | 1.9%   |
| Other P50s/P20s                     | 28,105      | 38,765       | 10,660            | 37.9%  |
| Other Specialized Centers           | 116,380     | 142,702      | 26,322            | 22.6%  |
| Total: Centers, Spec Ctrs, & SPOREs | 561,453     | 611,133      | 49,680            | 8.8%   |
| Research Career Program             | 79,120      | 74,914       | -4,206            | -5.3%  |
| Cancer Education                    | 31,945      | 35,444       | 3,499             | 11.0%  |
| Clinical Cooperative Groups         | 234,531     | 254,487      | 19,956            | 8.5%   |
| Other Grants                        | 71,698      | 77,768       | 6,070             | 8.5%   |
| Subtotal, Other                     | 417,294     | 442,613      | 25,319            | 6.1%   |
| Total, Research Grants              | 3,112,698   | 3,221,804    | 109,106           | 3.5%   |
| National Research Service Awards    | 70,134      | 67,564       | -2,570            | -3.7%  |
| R&D Contracts                       | 610,142     | 613,762      | 3,620             | 0.6%   |
| Intramural Research                 | 781,389     | 805,332      | 23,943            | 3.1%   |
| Research Management & Support       | 384,644     | 381,765      | -2,879            | -0.7%  |
| Construction                        | -           | -            | -                 | 0.0%   |
| Buildings and Facilities            | 7,920       | 7,920        | -                 | 0.0%   |
| Total, NCI                          | 4,966,927 * | 5,098,147 ** | 131,220           | 2.6%   |
| AIDS research included above        | [265,882]   | [272,130]    | 6,248             | 2.3%   |

\*Cancer Prevention and Control was eliminated as a Budget Mechanism in FY09.

\*\*EXCLUDES projects awarded with Stamp Out Breast Cancer funds.

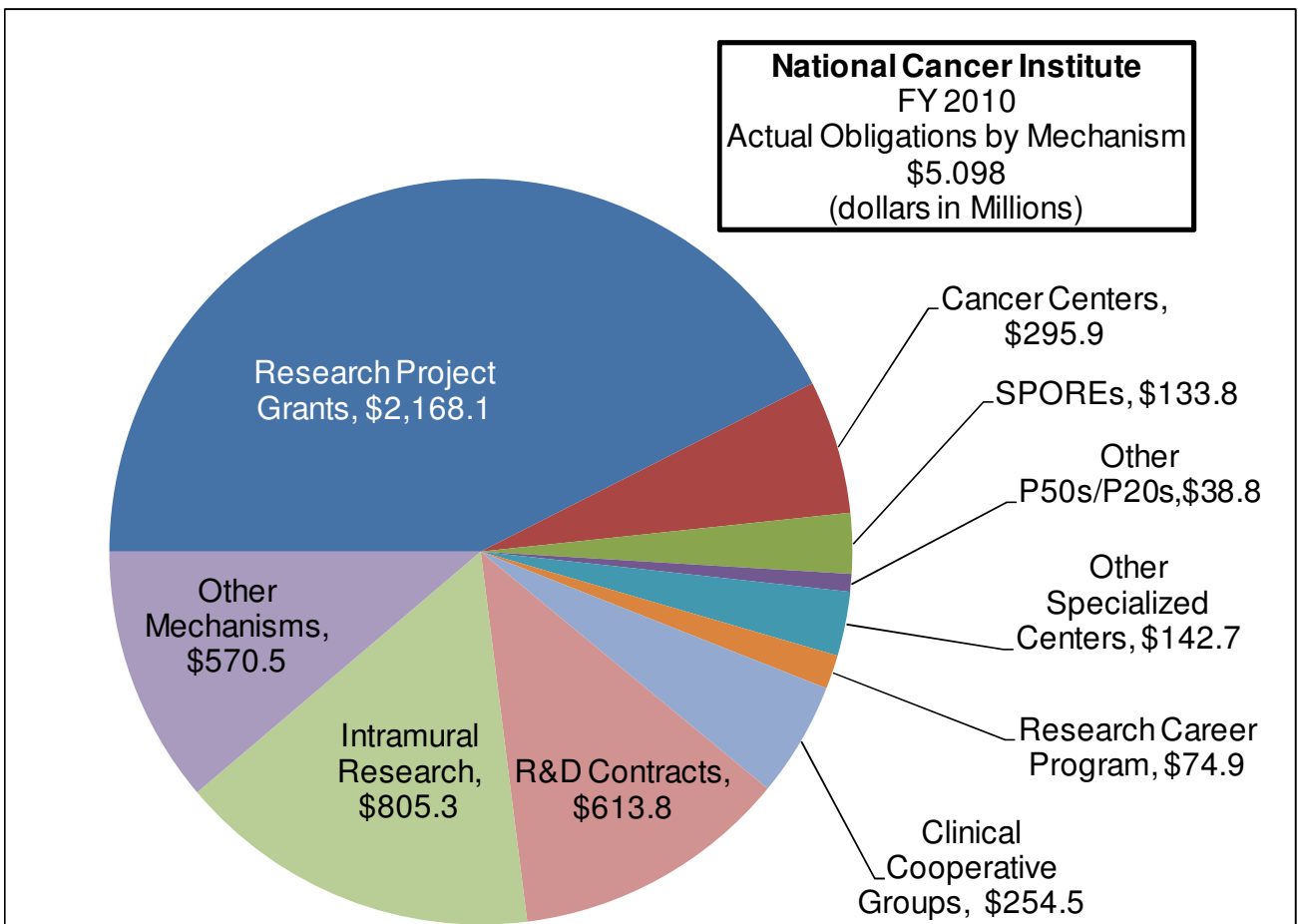
## Percent Share of Total NCI Dollars

### Summary Points

- The mechanism shares of the total budget have remained relatively stable from FY 2006 to FY 2010, taking into account the elimination of Cancer Prevention and Control as a budget mechanism in FY 2009

| <b>Percent Share of Total NCI Dollars</b> |             |             |             |             |             |
|---|-------------|-------------|-------------|-------------|-------------|
|   | <b>2006</b> | <b>2007</b> | <b>2008</b> | <b>2009</b> | <b>2010</b> |
| <b>Research Project Grants</b>            | 45.4%       | 44.1%       | 43.3%       | 43.0%       | 42.5%       |
| <b>Cancer Centers</b>                     | 5.6%        | 5.7%        | 5.7%        | 5.8%        | 5.8%        |
| <b>SPOREs</b>                             | 2.6%        | 2.6%        | 2.6%        | 2.6%        | 2.6%        |
| <b>Specialized Centers</b>                | 1.6%        | 1.6%        | 1.6%        | 2.3%        | 2.8%        |
| <b>Other P50s/P20s</b>                    | -           | -           | -           | 0.6%        | 0.8%        |
| <b>Clinical Cooperative Groups</b>        | 3.1%        | 3.1%        | 3.0%        | 4.7%        | 5.0%        |
| <b>R&amp;D Contracts</b>                  | 7.3%        | 8.7%        | 9.2%        | 12.3%       | 12.0%       |
| <b>Intramural Research</b>                | 14.5%       | 14.7%       | 14.9%       | 15.7%       | 15.8%       |
| <b>Cancer Prevention &amp; Control*</b>   | 10.7%       | 10.4%       | 9.9%        | 0.0%        | 0.0%        |
| <b>Other Mechanisms</b>                   | 9.3%        | 9.2%        | 9.9%        | 13.0%       | 12.7%       |

\*Cancer Prevention and Control Eliminated as a Budget Mechanism in FY09.





## Funding Trends

### *Summary Points*

- The NCI budget has increased by \$350.9 million – or 7.4% – since FY 2006.
- Increase for R&D contracts, Clinical Cooperative Groups, and other mechanisms are due in part to the elimination of the Cancer Prevention and Control Mechanism

|   | <b>Historical Funding Trends</b> |             |             |             |             |
|---|----------------------------------|-------------|-------------|-------------|-------------|
|   | <b>(Dollars in Millions)</b>     |             |             |             |             |
|   | <b>2006</b>                      | <b>2007</b> | <b>2008</b> | <b>2009</b> | <b>2010</b> |
| <b>Total NCI</b>                        | \$4,747.2                        | \$4,792.6   | \$4,827.6   | \$4,966.9   | \$5,098.1   |
| <b>Research Project Grants</b>          | 2,156.9                          | 2,111.8     | 2,089.9     | 2,134.0     | 2,168.1     |
| <b>Cancer Centers</b>                   | 265.0                            | 273.2       | 274.5       | 285.6       | 295.9       |
| <b>SPOREs</b>                           | 124.9                            | 123.8       | 123.3       | 131.4       | 133.8       |
| <b>Other P50s/P20s</b>                  | -                                | -           | -           | 28.1        | 38.8        |
| <b>Other Specialized Centers</b>        | 73.9                             | 74.7        | 79.3        | 116.4       | 142.7       |
| <b>Clinical Cooperative Groups</b>      | 145.9                            | 148.2       | 144.0       | 234.5       | 254.5       |
| <b>R&amp;D Contracts</b>                | 347.8                            | 416.9       | 444.2       | 610.1       | 613.8       |
| <b>Intramural Research</b>              | 687.3                            | 706.2       | 718.4       | 781.4       | 805.3       |
| <b>*Cancer Prevention &amp; Control</b> | 505.6                            | 498.4       | 471.5       | -           | -           |
| <b>Other Mechanisms</b>                 | 439.8                            | 439.4       | 482.5       | 645.5       | 645.4       |

|   | <b>% Growth by Mechanism</b> |                         |                         |                         |                         |
|---|------------------------------|-------------------------|-------------------------|-------------------------|-------------------------|
|   | <b>2006 to<br/>2007</b>      | <b>2007 to<br/>2008</b> | <b>2008 to<br/>2009</b> | <b>2009 to<br/>2010</b> | <b>2006 to<br/>2010</b> |
| <b>Total NCI</b>                        | 1.0%                         | 0.7%                    | 2.9%                    | 2.6%                    | 7.4%                    |
| <b>Research Project Grants</b>          | -2.1%                        | -1.0%                   | 2.1%                    | 1.6%                    | 0.5%                    |
| <b>Cancer Centers</b>                   | 3.1%                         | 0.5%                    | 14.3%                   | 3.6%                    | 11.6%                   |
| <b>SPOREs</b>                           | -0.9%                        | -0.4%                   | 6.5%                    | 1.9%                    | 7.1%                    |
| <b>Other P50s/P20s</b>                  | -                            | -                       | 100.0%                  | 37.9%                   | 100.0%                  |
| <b>Specialized Centers</b>              | 1.0%                         | 6.2%                    | 46.8%                   | 22.6%                   | 93.0%                   |
| <b>Clinical Cooperative Groups</b>      | 1.6%                         | -2.8%                   | 62.9%                   | 8.5%                    | 74.4%                   |
| <b>R&amp;D Contracts</b>                | 19.9%                        | 6.6%                    | 6.6%                    | 0.6%                    | 76.5%                   |
| <b>Intramural Research</b>              | 2.7%                         | 1.7%                    | 8.8%                    | 3.1%                    | 17.2%                   |
| <b>*Cancer Prevention &amp; Control</b> | 1.4%                         | -5.4%                   | -100.0%                 | 0.0%                    | -100.0%                 |
| <b>Other Mechanisms</b>                 | -0.1%                        | 9.8%                    | 33.8%                   | 0.0%                    | 46.7%                   |

\*Cancer Prevention and Control Eliminated as a Budget Mechanism in FY09.

## Research Project Grants

### Summary Points

- 91% of competing dollars supported grants awarded within the established payline; 9% supported grants as an exception to the payline.
- RFA funds increased from FY 2009 dollar level and accounted for 12.6% of FY 2010 competing dollars.
- Research Project Grant applications submitted to NCI increased by approximately 14%.
- A total of 1,253 competing RPG's were funded.

| <b>Research Project Grants*</b>                     |             |               |             |               |
|---|-------------|---------------|-------------|---------------|
| (Dollars in Thousands)                              |             |               |             |               |
|   | <b>2009</b> |               | <b>2010</b> |               |
|   | <b>No.</b>  | <b>Amount</b> | <b>No.</b>  | <b>Amount</b> |
| Total funding for RPGs                              | 5,179       | \$2,133,951   | 5,078       | \$2,169,058   |
| SBIR/STTR   | 261         | \$91,954      | 207         | \$85,669      |
| Funding for RPGs without SBIR/STTR Program          | 4,918       | \$2,041,997   | 4,871       | \$2,082,389   |
| Competing grants funded                             | 1,235       | \$457,834     | 1,253       | \$516,598     |
| Administrative Supplements                          | 267         | \$33,257      | 258         | \$29,022      |
| Partial assessment for DHHS Program Evaluation      |             | \$70,912      |             | \$75,329      |
| Funds set aside within competing dollars for:       |             |               |             |               |
| Grants within Paylines:                             | 1,169       | \$423,668     | 1,134       | \$468,594     |
| Traditional R01                                     | 680         | \$259,819     | 726         | \$284,237     |
| Program Projects (P01)                              | 23          | \$39,339      | 26          | \$53,174      |
| RFA Grants  | 89          | \$49,001      | 95          | \$65,168      |
| Share of competing grant funds                      |             | 10.7%         |             | 12.6%         |
| Exception Grants                                    | 66          | \$34,165      | 119         | \$48,004      |
| Share of competing grant funds                      |             | 7.5%          |             | 9.3%          |
| Competing Application Requests                      | 6,419       | \$2,570,862   | 7,338       | \$3,065,725   |
| Funding Success Rate                                |             | 19.2%         |             | 20.2%         |
| Percentile funding for R01 grants                   |             | 16th          |             | 15th          |
| Average Cost-Competing                              |             | \$371         |             | \$412         |
| Average Reduction from recommended/requested levels |             | -17%          |             | -17%          |

\*EXCLUDES projects awarded with Stamp Out Breast Cancer funds.

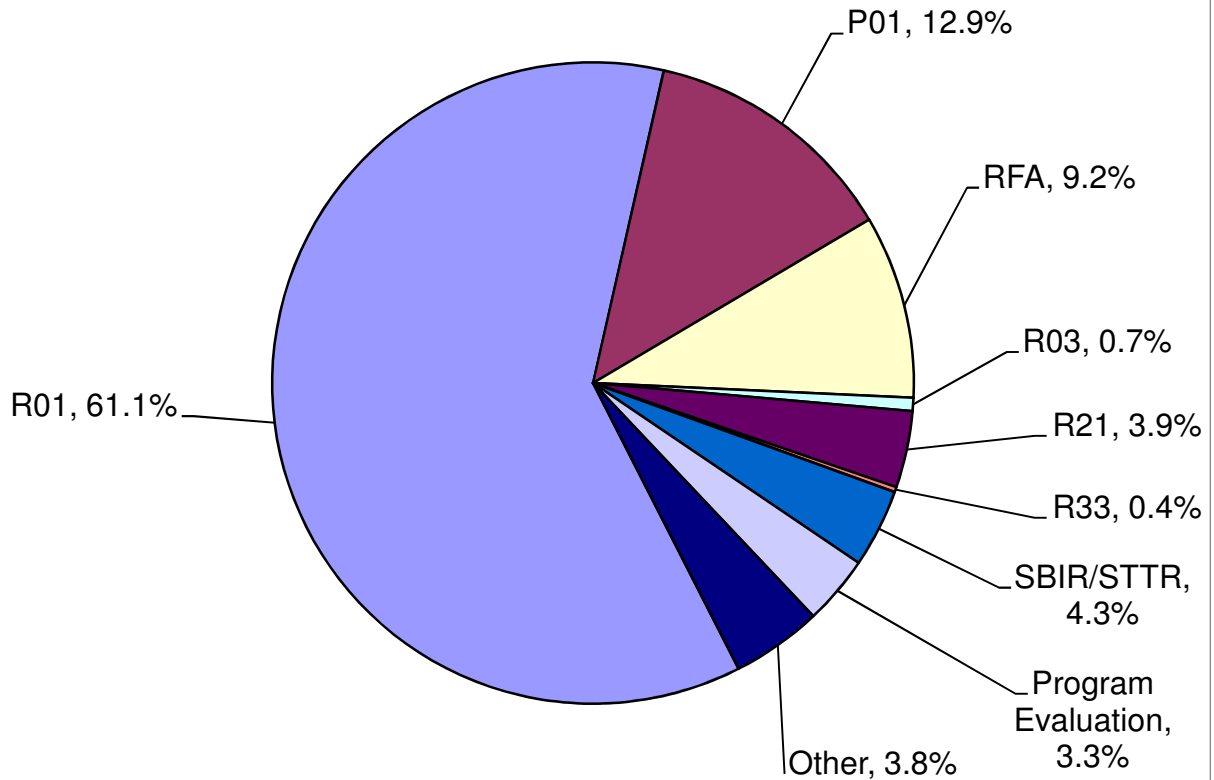
### Grant Funding Paylines

| RPG Mechanisms:                 | 2009 | 2010** |                |
|---------------------------------|------|--------|----------------|
| <b>R01 Traditional Grants</b>   | 16th | 15th   | percentile     |
| <b>P01 Program Projects*</b>    | N/A  | N/A    | priority score |
| <b>R03 Small Grants</b>         | 210  | 30     | priority score |
| <b>R21 Exploratory Phase I</b>  | 16th | 15th   | percentile     |
| <b>R33 Exploratory Phase II</b> | 155  | 17     | priority score |
| <b>R41/R42 STTR</b>             | 180  | 29     | priority score |
| <b>R43/R44 SBIR</b>             | 210  | 29     | priority score |

\* Formal paylines for P01 grants are determined by the Executive Committee

\*\* In FY 2010, NIH instituted a new peer review scoring system resulting in a two digit priority score. More information on the new system is available under "Peer Review Process" online at: <http://grants.nih.gov/grants/oer.htm>

### National Cancer Institute FY 2010 % Share of Total RPG Funds

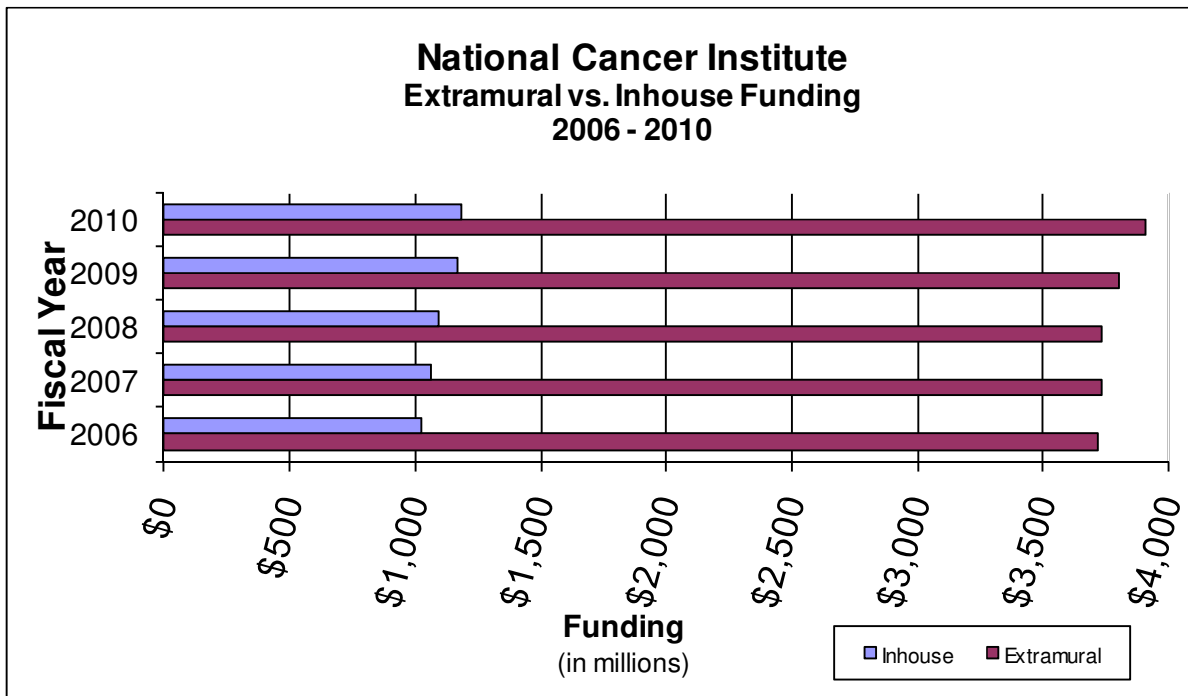


**National Cancer Institute  
Extramural vs. Inhouse Funding**  
(dollars in millions)

| Mechanism                     | Extramural     |                |                |                |                | 06-10% chg. |
|-------------------------------|----------------|----------------|----------------|----------------|----------------|-------------|
|                               | 2006           | 2007           | 2008           | 2009           | 2010           |             |
| Research Project Grants       | \$2,156.9      | \$2,111.8      | \$2,089.9      | \$2,134.0      | \$2,168.1      | 0.5%        |
| Cancer Centers                | 265.0          | 273.2          | 274.5          | 285.6          | 295.9          | 10.4%       |
| SPOREs                        | 124.9          | 123.8          | 123.3          | 131.4          | 133.8          | 6.6%        |
| Other P50s/P20s               | -              | -              | -              | 28.1           | 38.8           | 100.0%      |
| Other Specialized Centers     | 73.9           | 74.7           | 79.3           | 116.4          | 142.7          | 48.2%       |
| Other Research Grants         | 327.1          | 322.9          | 317.8          | 417.3          | 442.6          | 26.1%       |
| NRSA                          | 66.6           | 68.2           | 69.9           | 70.1           | 67.6           | 1.4%        |
| R&D Contracts                 | 347.8          | 416.9          | 444.2          | 610.1          | 613.8          | 43.3%       |
| Cancer Control Grants*        | 213.5          | 200.1          | 190.4          | -              | -              | -100.0%     |
| Cancer Control Contracts*     | 137.1          | 133.7          | 134.8          | -              | -              | -100.0%     |
| Construction                  | -              | -              | -              | -              | -              | 0.0%        |
| Buildings & Facilities        | 7.9            | 7.9            | 7.9            | 7.9            | 7.9            | 0.0%        |
| <b>Total Extramural Funds</b> | <b>3,720.7</b> | <b>3,733.2</b> | <b>3,732.0</b> | <b>3,800.9</b> | <b>3,911.1</b> | <b>5.1%</b> |

| Mechanism                  | Inhouse        |                |                |                |                | 06-10% chg.  |
|----------------------------|----------------|----------------|----------------|----------------|----------------|--------------|
|                            | 2006           | 2007           | 2008           | 2009           | 2010           |              |
| Intramural Research        | \$687.3        | \$706.2        | \$718.4        | \$781.4        | \$805.3        | 17.2%        |
| RMS                        | 184.1          | 188.7          | 231.0          | 384.6          | 381.8          | 107.4%       |
| Control Inhouse*           | 155.0          | 164.5          | 146.3          | -              | -              | -100.0%      |
| <b>Total Inhouse Funds</b> | <b>1,026.5</b> | <b>1,059.4</b> | <b>1,095.7</b> | <b>1,166.0</b> | <b>1,187.1</b> | <b>15.6%</b> |
| <b>Total NCI</b>           | <b>4,747.2</b> | <b>4,792.6</b> | <b>4,827.7</b> | <b>4,966.9</b> | <b>5,098.1</b> | <b>7.4%</b>  |

\*Cancer Prevention and Control Eliminated as a Budget Mechanism in FY09.



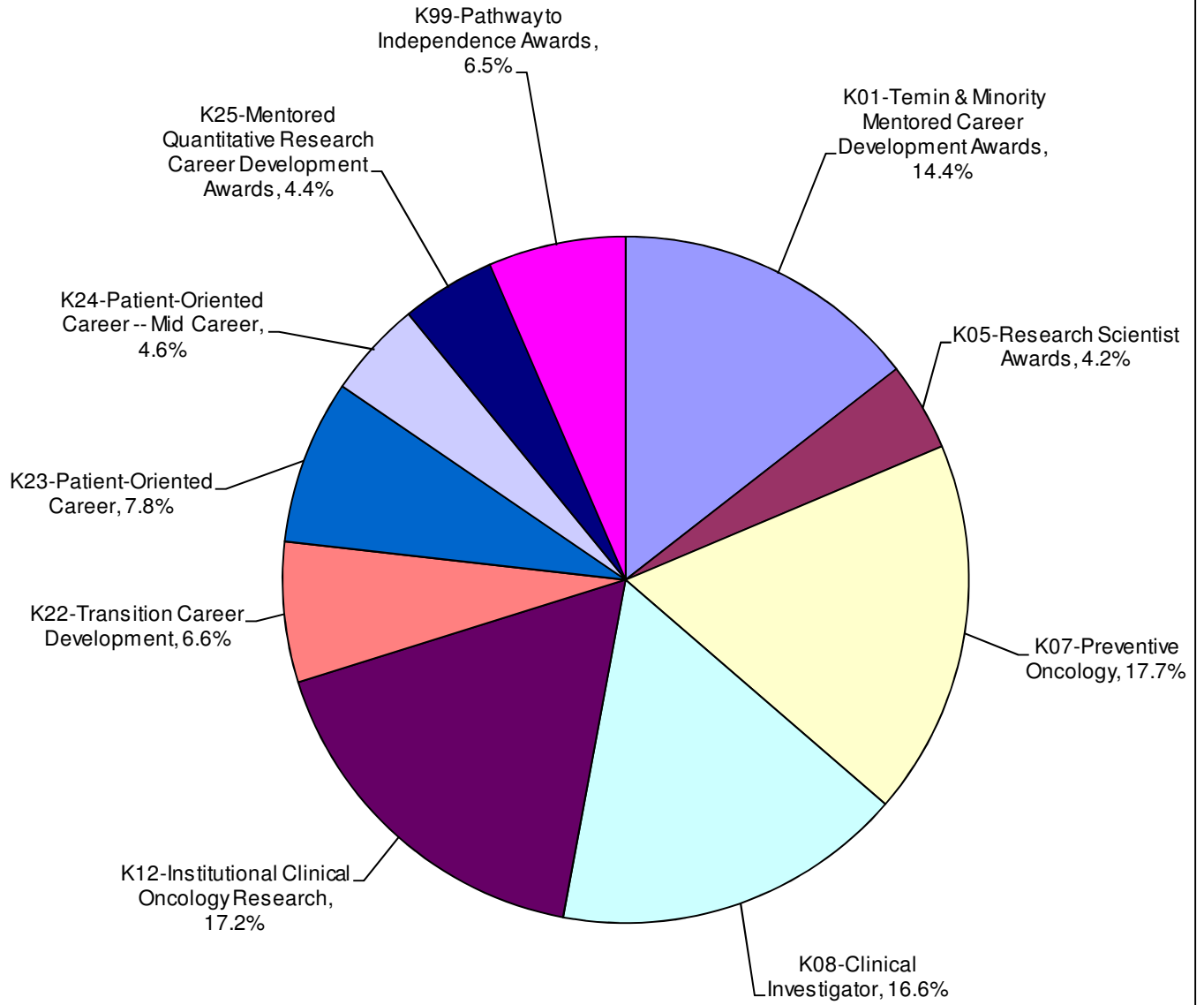
## Research Career Awards – “K” Program

### *Summary Points*

- The Research Career Award mechanism decreased by 5.3% in FY 2010.
- The number of Research Career Awards decreased by 47 between FY 2009 and FY 2010.
- NCI funded 41 awards for the NIH Pathway to Independence program.

|     |   | (Dollars in Thousands) |         |      |         |
|-----|---|------------------------|---------|------|---------|
|     |   | 2009                   |         | 2010 |         |
|     |   | No.                    | Amount  | No.  | Amount  |
| K01 | Temin Awards  | 47                     | \$7,170 | 30   | \$4,520 |
| K01 | Minority Mentored Career Development Award              | 49                     | 6,576   | 47   | 6,303   |
|     | Subtotal, K01s  | 96                     | 13,746  | 77   | 10,823  |
| K05 | Research Scientist Award                                | 20                     | 2,926   | 21   | 3,134   |
| K07 | Preventive Oncology                                     | 108                    | 14,585  | 97   | 13,278  |
| K08 | Clinical Investigator                                   | 85                     | 11,779  | 83   | 12,407  |
| K12 | Institutional Clinical Oncology Research                | 17                     | 11,643  | 18   | 12,922  |
| K22 | Transition Career Development                           | 43                     | 6,763   | 30   | 4,963   |
| K23 | Patient-Oriented Career                                 | 44                     | 6,179   | 40   | 5,812   |
| K24 | Patient-Oriented Career -- Mid Career                   | 18                     | 2,916   | 20   | 3,422   |
| K25 | Mentored Quantitative Research Career Development Award | 22                     | 3,087   | 25   | 3,311   |
| K99 | NIH Pathway to Independence Awards                      | 46                     | 5,496   | 41   | 4,842   |
|     | Total Research Career Program                           | 499                    | 79,120  | 452  | 74,914  |

**National Cancer Institute**  
**FY 2010**  
**% of Total Research Award Funds**



## Research Dollars by Various Cancers

### *Summary Points*

- Funding for various cancers listed below may overlap
- Funding for cancers listed below do not represent the entire NCI budget
- Based on NCI Coding Methodology.

| Research Dollars by Various Cancers<br>(Dollars in Millions) |           |           |           |           |           |
|--|-----------|-----------|-----------|-----------|-----------|
|  | 2006      | 2007      | 2008      | 2009      | 2010      |
| Total NCI  | \$4,747.2 | \$4,792.6 | \$4,827.6 | \$4,966.9 | \$5,098.1 |
| AIDS   | 253.7     | 253.7     | 258.5     | 265.9     | 272.1     |
| Brain & Central Nervous System                               | 130.3     | 148.2     | 153.7     | 151.5     | 156.8     |
| Breast Cancer  | 584.7     | 572.4     | 586.8     | 599.4     | 631.2     |
| Cervical Cancer  | 83.3      | 82.4      | 76.8      | 70.8      | 77.0      |
| Clinical Trials  | 822.3     | 843.7     | 853.2     | 882.8     | 852.3     |
| Colorectal Cancer  | 244.1     | 258.4     | 273.7     | 264.1     | 270.4     |
| Head and Neck  | 71.3      | 66.2      | 76.1      | 77.1      | 62.7      |
| Hodgkin's Disease  | 20.9      | 16.5      | 17.5      | 18.2      | 14.6      |
| Leukemia   | 223.5     | 205.5     | 216.4     | 220.5     | 239.7     |
| Liver Cancer   | 62.7      | 67.7      | 74.2      | 69.0      | 72.6      |
| Lung Cancer  | 242.9     | 226.9     | 247.6     | 246.7     | 281.9     |
| Melanoma   | 108.0     | 97.7      | 110.8     | 103.7     | 102.3     |
| Multiple Myeloma   | 30.3      | 32.3      | 41.5      | 45.2      | 48.5      |
| Non Hodgkin's Lymphoma                                       | 114.1     | 113.0     | 122.6     | 131.3     | 122.4     |
| Ovarian Cancer   | 95.1      | 96.9      | 100.0     | 110.1     | 112.3     |
| Pancreatic Cancer  | 74.2      | 73.3      | 87.3      | 89.6      | 97.1      |
| Prostate Cancer  | 293.2     | 296.1     | 285.4     | 285.1     | 300.5     |
| Stomach Cancer   | 11.5      | 12.0      | 12.4      | 15.4      | 14.5      |
| Uterine Cancer   | 19.4      | 16.6      | 17.1      | 18.0      | 14.2      |

| <b>FY 2009 and 2010 NCI American Recovery and Reinvestment Act (Recovery Act)</b> |      |           |      |           |                  |
|---|------|-----------|------|-----------|------------------|
| <b>Spending by Mech</b>   |      |           |      |           |                  |
| <i>(dollars in thousands)</i>   |      |           |      |           |                  |
|   | 2009 |           | 2010 |           |                  |
|   | No.  | Amount    | No.  | Amount    |                  |
| Research Project Grants:  |      |           |      |           |                  |
| Noncompeting  | -    | -         | 479  | \$183,403 |                  |
| Admin Supplements   | 487  | \$141,375 | (12) | 6,586     |                  |
| Competing   | 543  | 230,825   | 3    | 5,392     |                  |
| Subtotal, RPG   | 1030 | 372,200   | 482  | 195,381   |                  |
| SBIR/STTR   | 1    | 6,906     | -    | 47        |                  |
| Total, RPG  | 1031 | 379,106   | 482  | 195,428   |                  |
| Cancer Centers  | 13   | 72,212    | -    | 9,007     |                  |
| Specialized Cancer Centers (U54)  | 6    | 18,040    | 4    | 7,698     |                  |
| SPOREs  | 2    | 6,831     | -    | -         |                  |
| Total: Centers, Spec Ctrs, & SPOREs   | 21   | 97,083    | 4    | 16,705    |                  |
| Research Career Program   | -    | 11,360    | -    | -67       |                  |
| Cancer Education  | 1    | 1,292     | -    | -         |                  |
| Clinical Cooperative Groups   | -    | 19,821    | -    | 4,598     |                  |
| Other Grants  | 1    | 11,201    | -    | 9,998     |                  |
| Subtotal, Other   | 2    | 43,674    | 0    | 14,529    |                  |
| Total, Research Grants  | 1054 | 519,863   | 486  | 266,662   |                  |
| National Research Service Awards  | 10   | 1,109     | -    | -         |                  |
| R&D Contracts   | -    | 318,458   | 78   | 175,284   |                  |
| Intramural Research   | -    | 143       | -    | 5,490     |                  |
| Research Management & Support   | -    | 6,023     | -    | 3,484     |                  |
| Total, NCI  | 1064 | 845,596   | 564  | 410,920   |                  |
| <b>Total Recover Act Amount</b>   |      |           |      |           | <b>1,256,516</b> |

NCI received \$1.257 billion in American Recovery and Reinvestment Act (Recovery Act) funds to be awarded over a two year period -- FY 2009 and FY 2010. These Recovery Act funds are an investment in building a strong foundation for a 21<sup>st</sup> century economy, including sustaining and building the American workforce. The following programs of note are receiving Recovery Act funds through NCI:

- Accelerating Clinical Trials of Novel Oncologic PathWays (ACTNOW) – Funding 37 promising clinical trials of molecularly-targeted therapies to speed the delivery of personalized cancer treatments to patients.
- Cancer Centers Programs – 62 NCI designated Cancer Centers across the country received \$63 million in Recovery Act funding to supplement Cancer Center Support Grants.
- Personalized Cancer Care / Drug Development Platform – Enabling drug development that begins with the discovery of genetic changes and ends with targeted cancer therapies. Programs that support this vision include:
  - The Cancer Genome Atlas (TCGA) is developing a comprehensive catalog of genomic changes found in adult cancers;
  - Therapeutically Applicable Research to Generate Effective Treatments (TARGET) is mapping the genetic changes associated with childhood cancers;
  - The Cancer Human Biobank (caHUB) leads quality biospecimen collection and management
  - The NCI Community Cancer Centers Program (NCCCP) involves patients around the country who provide data and volunteer for clinical trials.
- Physical Sciences in Oncology Centers – Exploring perspectives from the physical sciences to enhance our understanding of cancer biology.





# National Cancer Institute

---

## **Director's Biography** **Harold Varmus, M.D.**

Harold Varmus became Director of the National Cancer Institute on July 12, 2010.

Dr. Varmus, a co-recipient of the Nobel Prize for studies of the genetic basis of cancer, served 10 years as President of Memorial Sloan-Kettering Cancer Center, following six years as Director of the National Institutes of Health. He is a member of the U.S. National Academy of Sciences and the Institute of Medicine and is involved in initiatives to promote science in developing countries, including the Global Science Corps. The author of over 350 scientific papers and five books, including a recent memoir titled The Art and Politics of Science, he was a co-chair of President Obama's Council of Advisors on Science and Technology, was a co-founder and Chairman of the Board of the Public Library of Science, and chaired the Scientific Board of the Gates Foundation Grand Challenges in Global Health. In 2001, he received the National Medal of Science.

## Former Directors of the National Cancer Institute

---

|   |   |
|---|---|
| <b>John E. Niederhuber, M.D.</b><br>June 2006 – September 2006 (Acting)<br>September 2006 – July 2010 | John E. Niederhuber, M.D., became Director of the National Cancer Institute (NCI), one of the National Institutes of Health, in September 2006. He joined NCI in a full-time capacity in September 2005, as Deputy Director for Translational and Clinical Sciences, and within a few weeks was asked to serve as Chief Operating Officer. He officially became NCI's Acting Director in June 2006. Dr. Niederhuber has also served as the Chair of the National Cancer Advisory Board, as an external NCI advisor and grant reviewer, and as a laboratory investigator supported by NCI and the NIH. |
| <b>Andrew C. von Eschenbach, M.D.</b><br>January 2002 – September 2005                                | Andrew C. von Eschenbach, M.D. became the 12 <sup>th</sup> NCI in January 2002. He previously directed the Genitourinary Cancer Center and the Prostate Cancer Research Program at The University of Texas M.D. Anderson Cancer Center and held the Roy M. and Phyllis Gough Huffington Clinical Research Distinguished Chair in Urologic Oncology.   |
| <b>Richard D. Klausner, M.D.</b><br>August 1995 – September 2001                                      | Dr. Klausner was appointed as the Director of the NCI on August 1, 1995. From 1984 until 1997 he was Chief of the Cell Biology and Metabolism Branch of the National Institute of Child Health & Human Development.   |
| <b>Samuel Broder, M.D.</b><br>December 1988 – March 1995  | Dr. Broder joined NCI in 1972 as a Clinical Associate in the Metabolism Branch. In 1981, he became Associate Director for NCI's Clinical Oncology Program.  |
| <b>Vincent T. DeVita, Jr., M.D.</b><br>January 1980 – June 1980 (Acting)<br>July 1980 – August 1988   | Dr. DeVita joined NCI in 1963 as a Clinical Associate in the Laboratory of Chemical Pharmacology. He served NCI as head of the Solid Tumor Service, Chief of the Medicine Branch, Director of the Division of Cancer Treatment and Clinical Director prior to his appointment as Director of NCI.   |
| <b>Arthur Canfield Upton, M.D.</b><br>July 1977 – December 1979                                       | Prior to his tenure as NCI Director, Dr. Upton served as Dean of the School of Basic Health Sciences at the State University of New York at Stony Brook.  |
| <b>Frank Joseph Rauscher, Jr., Ph.D.</b><br>May 1972 – October 1976                                   | Dr. Rauscher served as Scientific Director for Etiology, NCI, prior to his appointment as Director of NCI in 1972.  |
| <b>Carl Gwin Baker, M.D.</b><br>November 1969 – July 1970 (Acting)<br>July 1970 – April 1972          | During his tenure with PHS, Dr. Baker served as Scientific Director for Etiology, NCI, and as Acting Director of NCI prior to his appointment as Director in July 1970.   |
| <b>Kenneth Milo Endicott, M.D.</b><br>July 1960 – November 1969                                       | Dr. Endicott served as Chief of the Cancer Chemotherapy National Service Center, PHS, and as Associate Director, NIH, prior to being appointed Director of NCI in July 1960.  |
| <b>John Roderick Heller, M.D.</b><br>May 1948 – June 1960   | Dr. Heller joined PHS in 1934 and became Chief of the Venereal Disease Division prior to his appointment as Director of NCI in 1948.  |

## **Former Directors of the National Cancer Institute (continued)**

---

**Leonard Andrew Scheele, M.D.**  
July 1947 – April 1948

Dr. Scheele served in various capacities during his tenure with PHS prior to his appointment as Assistant Chief and, subsequently, Director of NCI in July 1947.

**Roscoe Roy Spencer, M.D.**  
August 1943 – July 1947

Dr. Spencer became NCI's first Assistant Chief and, subsequently, was appointed Director of the Institute in 1943.

**Carl Voegtlin, Ph.D.**  
January 1938 – July 1943

Dr. Voegtlin served as Professor of Pharmacology and Chief of the Division of Pharmacy at the Hygienic Laboratory prior to becoming the first Director of NCI in 1938.

# National Cancer Advisory Board (NCAB)

---

## Membership and Term

### Chairperson

2012 Bruce A. Chabner, M.D.  
Massachusetts General Hospital Cancer Center  
Massachusetts General Hospital  
Boston, MA 02114

### Chairperson (Retired September 2010)

2010 Carolyn D. Runowicz, M.D.  
The Carol and Ray Neag Comprehensive  
Cancer Center  
University of Connecticut Health Center  
Farmington, CT 06030

2012 Anthony Atala, M.D.  
Wake Forest Institute for Regenerative Medicine  
Department of Urology  
Wake Forest University School of Medicine  
Winston-Salem, NC 27157

2014 Victoria L. Champion, D.N.S.  
Center for Research & Scholarship  
Indiana University School of Nursing  
Indianapolis, IN 46202

2012 Donald S. Coffey, Ph.D.  
Departments of Urology/Oncology/Pathology  
Pharmacology and Molecular Science  
Johns Hopkins University School of Medicine  
Baltimore, MD 21287

2016 Marcia R. Cruz-Correa, M.D., Ph.D.\*  
University of Puerto Rico  
Basic and Translational Science Director  
University of Puerto Rico  
Comprehensive Cancer Center  
San Juan, Puerto Rico

2016 Kevin J. Cullen, M.D.\*  
Marlene and Stewart Greenebaum Cancer Center  
University of Maryland  
Baltimore, MD

2010 Lloyd K. Everson, M.D.  
US Oncology Incorporated  
Houston, TX 77060

2010 Kathryn Giusti, M.B.A.  
Multiple Myeloma Research Foundation, Inc.  
Multiple Myeloma Research Consortium  
Norwalk, CT 06851

2014 William H. Goodwin, Jr.  
CCA Industries, Inc.  
Richmond, VA 23219

2014 Waun Ki Hong, M.D.  
Department of Thoracic/Head & Neck  
Medical Oncology  
The University of Texas M.D. Anderson  
Cancer Center  
Houston, TX 77030

2012 Mr. Robert A. Ingram  
General Partner  
Hatteras Venture Partners  
Durham, NC 27701

2012 Judith S. Kaur, M.D.  
Native American Programs  
Mayo Comprehensive Cancer Center  
Department of Medical Oncology  
Mayo Clinic  
Rochester, MN 55905

2010 Mr. David H. Koch  
Koch Industries  
New York, NY 10021

2014 Mary Vaughan Lester  
Board of Directors  
University of California  
San Francisco Foundation  
Los Angeles, CA 99024

2010 Diana M. Lopez, Ph.D.  
Department of Microbiology and Immunology  
University of Miami Miller School of Medicine  
Miami, FL 33136

2014 H. Kim Lyerly, M.D.  
Duke Comprehensive Cancer Center  
Duke University Medical Center  
Durham, NC 27705

2012 Karen Dow Meneses, Ph.D.  
School of Nursing  
University of Alabama at Birmingham  
Birmingham, AL 35294

2016 Olufunmilayo I. Olopade, M.D., F.A.C.P.\*  
Center for Clinical Cancer Genetics  
University of Chicago  
Pritzker School of Medicine  
Chicago, IL

\* Newly appointed member pending personnel

## National Cancer Advisory Board (Continued)

---

2014 Jennifer A. Pietenpol, Ph.D.  
Vanderbilt-Ingram Cancer Center  
B.F. Byrd, Jr. Professor of Oncology  
Professor of Biochemistry  
Vanderbilt University Medical Center  
Nashville, TN 37232

2016 Jonathan M. Samet, M.D., M.S.\*  
Keck School of Medicine  
Institute for Global Health  
University of Southern California  
Los Angeles, CA

2016 William R. Sellers, M.D.\*  
Novartis Institutes for BioMedical Research, Inc.  
Cambridge, MA

2010 Daniel D. Von Hoff, M.D., F.A.C.P.  
Translational Drug Development Division  
Translational Genomics Research Institute  
University of Arizona Department of Medicine  
Phoenix, AZ 85004

Executive Secretary  
Paulette S. Gray, Ph.D.

Committee Management Officer  
Ms. Claire L. Harris

### Ex Officio Members

Linda S. Birnbaum, Ph.D., D.A.B.T., A.T.S.  
Director  
National Institute of Environmental Health  
Sciences and The National Technology Program  
National Institutes of Health  
Research Triangle Park, NC

Francis S. Collins, M.D., Ph.D.  
Director  
National Institutes of Health  
Bethesda, MD

Margaret A. Hamburg, M.D.  
Commissioner  
Food and Drug Administration  
Silver Spring, MD

John P. Holdren, Ph.D.  
Science Advisor to the President  
Director  
Office of Science and Technology Policy  
Executive Office of the President  
Washington, DC

John Howard, M.D., M.P.H., J.D., LL.M.  
Director  
National Institute for Occupational Safety and Health  
Washington, DC

Lisa Jackson, M.S.  
Administrator  
Environmental Protection Agency  
Washington, DC

The Honorable Dr. Michael J. Kussman  
Under Secretary for Health  
Veterans Health Administration  
Department of Veterans Affairs  
Washington, DC

Anna Palmisano, Ph.D.  
Associate Director, Office of Biological and  
Environmental Research  
Department of Energy  
Washington, DC

The Honorable Kathleen Sebelius, M.P.A.  
Secretary  
Department of Health and Human Services  
Washington, DC

The Honorable Hilda L. Solis  
Secretary  
Department of Labor  
Washington, DC

George P. Taylor, Jr., M.D., M.P.H.  
Performing the Duties of the Assistant  
Secretary of Defense for Health Affairs  
The Pentagon  
Washington, DC

Inez Tenenbaum, M.Ed.  
Chairman  
Consumer Product Safety Commission  
Bethesda, MD

\* Newly appointed member pending personnel

## National Cancer Advisory Board (Continued)

---

### Alternates to Ex Officio Members

Michael A. Babich, Ph.D.  
Directorate for Epidemiology and Health Sciences  
Consumer Product Safety Commission  
Bethesda, MD  
**(Ms. Inez Tenenbaum- CPSC)**

Patricia Bray, M.D., M.P.H.  
Acting Director, Office of Occupational Medicine  
OSHA / Department of Labor  
Washington, DC 20210  
**(The Honorable Hilda L. Solis– DOL)**

Michael Kelley, M.D., F.A.C.P.  
National Program Director for Oncology  
Veterans Health Administration  
Department of Veterans Affairs  
Durham, NC 27705  
**(The Honorable Dr. Michael J. Kussman)**

Steven Kleeberger, Ph.D.  
Acting Deputy Director  
National Institute of Environmental Health Sciences  
National Institutes of Health  
Research Triangle Park, NC  
**(Linda S. Birnbaum, Ph.D., D.A.B.T., A.T.S.- NIEHS)**

Richard Pazdur, M.D.  
Division Director  
Division of Oncology Drugs  
Food and Drug Administration  
Rockville, MD  
**(Margaret A. Hamburg, M.D. - FDA)**

John F. Potter, M.D.  
Director  
United States Military Cancer Institute  
Walter Reed Army Medical Center  
Washington, DC  
**(George P. Taylor, Jr., M.D., M.P.H.)**

R. Julian Preston, Ph.D.  
Associate Director for Health  
Environmental Protection Agency  
Research Triangle Park, NC  
**(Lisa Jackson, M.S. - EPA)**

Michael Stebbins, Ph.D.  
Assistant Director, Biotechnology  
Office of Science and Technology Policy  
Executive Office of the President  
Washington, DC  
**(John P. Holdren, Ph.D. –OSTP)**

Marie H. Sweeney, Ph.D., M.P.H.  
Chief  
Surveillance Branch  
Division of Surveillance  
Hazard Evaluations & Field Studies,  
National Institute for Occupational Safety  
and Health  
Cincinnati, Ohio  
**(John Howard, M.D., M.P.H., J.D., LL.M.- NIOSH)**

Lawrence A. Tabak, D.D.S., Ph.D.  
Principal Deputy Director  
National Institutes of Health  
Bethesda, MD  
**(Francis S. Collins, M.D., Ph.D.)**

Sharlene Weatherwax, Ph.D.  
Director  
Biological Systems Sciences Division  
Office of Biological and Environmental Research  
Office of Science  
U.S. Department of Energy  
Washington, DC  
**(Anna Palmisano, Ph.D. - DOE)**

**Note: Bold print represents Ex Officio Members**

## **National Cancer Advisory Board (Continued)**

---

### **NCAB Subcommittee Assignments**

#### **Subcommittee on Activities and Agenda**

Dr. Bruce Chabner - Chair  
Dr. Carolyn Runowicz - Chair (Retired 2010)  
Dr. Victoria Champion  
Dr. Diana Lopez (Retired 2010)  
Dr. Karen Meneses  
Executive Secretary: Dr. Paulette Gray  
(301) 496-5147

#### **Subcommittee on Cancer Centers**

Kim Lyerly - Chair  
Dr. Bruce Chabner  
Dr. Victoria Champion  
Dr. Lloyd Everson (Retired 2010)  
Mr. William Goodwin  
Dr. Judith Kaur  
Dr. Karen Meneses  
Dr. Jennifer Pietenpol  
Executive Secretary: Dr. Linda Weiss  
(301) 496-8531

#### **Subcommittee on Clinical Investigations**

Dr. Waun Ki Hong - Chair  
Dr. Anthony Atala  
Dr. Lloyd Everson (Retired 2010)  
Ms. Kathryn Giusti (Retired 2010)  
Mr. William Goodwin  
Dr. Judith Kaur  
Ms. Mary Lester  
Dr. Kim Lyerly  
Dr. Daniel Von Hoff (Retired 2010)  
Executive Secretary: Dr. Jeff Abrams  
(301) 496-2522

#### **Subcommittee on Planning and Budget**

Dr. Bruce Chabner - Chair  
Mr. William Goodwin  
Mr. David Koch (Retired 2010)  
Dr. Diana Lopez (Retired 2010)  
Dr. Kim Lyerly  
Executive Secretary: Mr. Jim Dickens  
(301) 496-5803

#### **Subcommittee on Special Actions**

Dr. Karen Meneses - Chair  
Committee of the Whole  
Executive Secretary: Dr. Paulette Gray  
(301) 496-5147

#### **Ad hoc Subcommittee on Biomedical Technology**

Dr. Donald Coffey - Chair  
Dr. Anthony Atala  
Ms. Kathryn Giusti (Retired 2010)  
Mr. David Koch (Retired 2010)  
Ms. Mary Lester  
Dr. Kim Lyerly  
Dr. Jennifer Pietenpol  
Executive Secretary: Dr. Carolyn Compton  
(301) 496-1550

#### **Ad hoc Subcommittee on Communications**

Chair - TBN  
Dr. Diana Lopez - (Chair Retired 2010)  
Dr. Victoria Champion  
Dr. Lloyd Everson Retired 2010)  
Mr. Robert Ingram  
Dr. Judith Kaur  
Ms. Mary Lester  
Dr. Kim Lyerly  
Dr. Karen Meneses  
Executive Secretary: Dr. Lenora Johnson  
(301) 451-6879

#### **Ad hoc Subcommittee on Experimental Therapeutics**

Chair - TBN  
Dr. Daniel Von Hoff - Chair (Retired 2010)  
Dr. Bruce Chabner  
Mr. William Goodwin  
Dr. Waun Ki Hong  
Dr. Kim Lyerly  
Executive Secretary: Dr. Joseph Tomaszewski  
(301) 496-6711

#### **Ad Hoc Subcommittee on Global Cancer Research**

Chair –TBN  
Dr. Anthony Atala  
Dr. Waun Ki Hong  
Dr. Kim Lyerly  
Executive Secretary: TBN



## Board of Scientific Counselors Intramural Programs

### Clinical Sciences and Epidemiology

| Appointees                            | Expiration of<br>Appointment | Appointees                                | Expiration of<br>Appointment |
|---------------------------------------|------------------------------|---|------------------------------|
| <b>Chair - Ethan Dmitrovsky, M.D.</b> | <b>2013</b>                  |   |                              |
| Wadih Arap, M.D., Ph.D.               | 2011                         | David Poplack, M.D.                       | 2014                         |
| Edgar Ben-Josef, M.D.                 | 2014                         | Nancy Roach                               | 2013                         |
| Bruce Blazar, M.D.                    | 2012                         | Thomas Rohan, M.D., Ph.D.                 | 2014                         |
| Tim Byers, M.D.                       | 2015                         | Daniel Schaid, Ph.D.                      | 2011                         |
| William Cance, M.D.                   | 2011                         | Thomas Sellers, Ph.D.                     | 2013                         |
| Susan Chang, M.D.                     | 2013                         | Darryl Shibata, M.D.                      | 2015                         |
| William Evans, Pharm.D.               | 2012                         | Robert Tigelaar, M.D.                     | 2013                         |
| Jo Freudenheim, Ph.D.                 | 2012                         | Walter Urba, M.D., Ph.D.                  | 2013                         |
| Judy Garber, M.D.                     | 2012                         | Elizabeth Ward, Ph.D.                     | 2014                         |
| Marc Goodman, Ph.D.                   | 2015                         | Cheryl Willman, M.D.                      | 2015                         |
| Bernard Harlow, Ph.D.                 | 2014                         |   |                              |
| Carl June, M.D.                       | 2014                         |   |                              |
| Karen Kelly, M.D.                     | 2015                         | Executive Secretary - Brian Wojcik, Ph.D. |                              |
| Alexandra Levine, M.D.                | 2015                         |   |                              |
| Augusto Ochoa, M.D.                   | 2014                         |   |                              |

### Basic Sciences

|                                       |             |   |      |
|---------------------------------------|-------------|---|------|
| <b>Chair - Laurence Hurley, Ph.D.</b> | <b>2011</b> |   |      |
| Cory Abate-Shen, Ph.D.                | 2011        | Marcelo Kazanietz, Ph.D.                        | 2015 |
| Dafna Bar-Sagi, Ph.D.                 | 2011        | Jonathan Licht, M.D.                            | 2014 |
| Paul Bieniasz, Ph.D.                  | 2014        | Wendell Lim, Ph.D.                              | 2011 |
| John Cambier, Ph.D.                   | 2015        | A. Thomas Look, M.D.                            | 2013 |
| Selina Chen-Kiang, Ph.D.              | 2011        | Ian Macara, Ph.D.                               | 2014 |
| Joan Conaway, Ph.D.                   | 2015        | Nita Maihle, Ph.D.                              | 2012 |
| Lawrence Corey, M.D.                  | 2014        | Lynn Matrisian, Ph.D.                           | 2012 |
| Norman Drinkwater, Ph.D.              | 2014        | Suzanne Ostrand-Rosenberg, Ph.D.                | 2014 |
| Nelson Fausto, M.D.                   | 2012        | Ann Marie Pendergast, Ph.D.                     | 2012 |
| Errol Friedberg, M.D.                 | 2014        | Thomas Poulos, Ph.D.                            | 2015 |
| Thomas Hamilton, Ph.D.                | 2011        | James Prestegard, Ph.D.                         | 2013 |
| Daria Hazuda, Ph.D.                   | 2015        | Kenneth Rock, M.D.                              | 2015 |
| Eric Hunter, Ph.D.                    | 2015        | Ming You, M.D., Ph.D.                           | 2011 |
| Chris Ireland, Ph.D.                  | 2013        | Virginia Zakian, Ph.D.                          | 2015 |
| Marc Jenkins, Ph.D.                   | 2013        | Executive Secretary - Florence E. Farber, Ph.D. |      |

## Board of Scientific Advisors Extramural Programs

|  |             |   |      |
|--|-------------|---|------|
| <b>Chair - Richard L. Schilsky, M.D.</b> | <b>2011</b> |   |      |
| Paul M. Allen, Ph.D.                     | 2011        | Marc A. Kastner, Ph.D.                        | 2012 |
| Christine B. Ambrosone, Ph.D.            | 2012        | Timothy J. Kinsella, M.D.                     | 2012 |
| Andrea Califano, Ph.D.                   | 2013        | Joshua LaBaer, M.D., Ph.D.                    | 2014 |
| Michael A. Caligiuri, M.D.               | 2012        | Mr. Donald Listwin                            | 2014 |
| Arul M. Chinnaiyan, M.D., Ph.D.          | 2015        | Christopher J. Logothetis, M.D.               | 2011 |
| Curt I. Civin, M.D.                      | 2012        | Maria E. Martinez, Ph.D., M.P.H.              | 2015 |
| Susan J. Curry, Ph.D.                    | 2010        | Kathleen H. Mooney, Ph.D., F.A.A.N., R.N.     | 2010 |
| William S. Dalton, M.D., Ph.D.           | 2010        | James L. Omel, M.D.                           | 2012 |
| Chi V. Dang, M.D., Ph.D.                 | 2014        | Edith A. Perez, M.D.                          | 2011 |
| Ronald A. DePinho, M.D.                  | 2015        | Robert D. Schreiber, Ph.D.                    | 2010 |
| Robert B. Diasio, M.D.                   | 2013        | Stuart L. Schreiber, Ph.D.                    | 2012 |
| Jeffrey A. Drebin, M.D., Ph.D., F.A.C.S. | 2014        | Bruce W. Stillman, Ph.D.                      | 2012 |
| Betty Ferrell, Ph.D., RN, F.A.A.N.       | 2015        | Victor J. Strecher, Ph.D. MPH                 | 2012 |
| Kathleen M. Foley, M.D.                  | 2013        | Louise C. Strong, M.D.                        | 2013 |
| Sanjiv S. Gambhir, M.D., Ph.D.           | 2012        | Frank M. Torti, M.D., M.P.H.                  | 2014 |
| Todd R. Golub, M.D.                      | 2011        | Jean Y. Wang, Ph.D.                           | 2011 |
| Joe W. Gray, Ph.D.                       | 2013        | Irving L. Weissman, M.D.                      | 2012 |
| James R. Heath, Ph.D.                    | 2010        | James K. Willson, M.D.                        | 2011 |
| Mary J. C. Hendrix, Ph.D.                | 2012        | Executive Secretary - Paulette S. Gray, Ph.D. |      |

## President's Cancer Panel

---

**LaSalle D. Leffall, Jr. M.D., F.A.C.S.** 2011

Charles R. Drew Professor of Surgery  
Howard University Hospital  
2041 Georgia Avenue, NW  
Suite 4000  
Washington, DC 20060

**Margaret L. Kripke, Ph.D.** 2011

Vivian L. Smith Chair and Professor Emerita  
University of Texas  
M.D. Anderson Cancer Center  
Unit 113  
1515 Holcombe Boulevard  
Houston, TX 77030

**Member** 2011  
(Vacant)

**Abby B. Sandler, Ph.D.**  
Executive Secretary  
Chief, NCI Institute Review Office  
6116 Executive Blvd.  
Suite 220, MSC 8349  
Bethesda, MD 20892-8349

---

## Scientific Program Leaders (SPL) Members

---

**Harold Varmus, M.D.**

Director

**Douglas Lowy, M.D.**

Deputy Director

**Kenneth H. Buetow, Ph.D.**

Director, Center for Biomedical Informatics  
and Information Technology

**Alan S. Rabson, M.D.**

Deputy Director

**Robert T. Croyle, Ph.D.**

Director, Division of Cancer Control and  
Population Sciences

**Dinah S. Singer, Ph.D.**

Director, Division of Cancer Biology

**John Czajkowski**

Deputy Director for Management

**Sanya A. Springfield, Ph.D.**

Director, Center to Reduce  
Cancer Health Disparities

**James H. Doroshow, M.D.**

Director, Division of Cancer Treatment  
and Diagnosis

**Michael Weingarten**

Director, SBIR Development Center

**Joseph F. Fraumeni, Jr., M.D.**

Director, Division of Cancer Epidemiology and  
Genetics

**Linda Weiss, Ph.D.**

Director, Cancer Centers

**Paulette S. Gray, Ph.D.**

Director, Division of Extramural Activities

**Jonathan Wiest, Ph.D.**

Director, Center for Cancer Training

**Peter Greenwald, M.D., Dr.Ph**

Director, Division of Cancer Prevention

**Robert H. Wiltout, Ph.D.**

Director, Center for Cancer Research

**Lee Helman, M.D.**

Scientific Director for Clinical Research, CCR

**Robert Yarchoan, M.D.**

Director, Office of HIV & AIDS Malignancy

**Joy Wiszneauckas, M.B.A**

Executive Secretary

## Clinical Trials and Translational Research Advisory Committee (CTAC)

---

### Membership and Term

**Chair**

Harold E. Varmus, M.D.  
Director  
National Cancer Institute  
National Institutes of Health  
Bethesda, MD

**2010 James L. Abbruzzese, M.D.**

Chairman  
Department of Gastrointestinal Medical Oncology  
The University of Texas M.D. Anderson Cancer Center  
Houston, TX

**2010 Peter C. Adamson, M.D.**

Professor  
Pediatrics and Pharmacology  
Chief  
Clinical Pharmacology and Therapeutics  
The Children's Hospital of Philadelphia  
The University of Pennsylvania  
Philadelphia, PA

**2011 Deborah W. Bruner, Ph.D., R.N.**

Professor of Nursing  
Director  
Clinical Trials Recruitment, Retention, and Outreach  
Core Facility  
Abramson Cancer Center  
The University of Pennsylvania  
Philadelphia, PA

**2012 Curt Civin, M.D. (BSA)**

Associate Dean of Research  
Professor of Pediatrics  
Director  
Center for Stem Cell Biology and Regenerative Medicine  
University of Maryland School of Medicine  
Baltimore, MD

**2012 Kenneth H. Cowan, M.D., Ph.D.**

Director  
Eppley Institute for Cancer Research  
University of Nebraska Medical Center  
Omaha, NE

**2011 Everett Dodson (DCLG)**

Community Health Educator  
Lombardi Comprehensive Cancer Center  
Washington, D.C.

**2013 Olivera J. Finn, Ph.D.**

Professor and Chair  
University of Pittsburgh School of Medicine  
Pittsburgh, PA

**2010 Stephen S. Grubbs, M.D.**

Chief of Oncology  
Medical Oncology Hematology Consultants  
Newark, DE

**2011 Sandra J. Horning, M.D.**

Senior VP, Global Head  
Clinical Development Hematology/Oncology  
Genentech, Inc.  
South San Francisco, CA

**2010 K. Gabriel Leung, M.S.**

Pharmaceutical Business  
OSI Pharmaceuticals  
Melville, NY

**2013 Scott M. Lippman, M.D.**

Professor and Chair  
Department of Thoracic/Head and Neck  
Medical Oncology  
The University of Texas M.D. Anderson  
Cancer Center  
Houston, TX

**2011 Nancy P. Mendenhall, M.D.**

Professor  
Department of Radiation Oncology  
College of Medicine  
Medical Director  
Proton Therapy Institute  
University of Florida  
Gainesville, FL

**2010 David R. Parkinson, M.D.**

President and CEO  
Nodality, Inc.  
South San Francisco, CA

**2011 Edith A. Perez, M.D. (BSA)**

Deputy Director  
Mayo Clinic Comprehensive Cancer Center  
Serene M. and Francese C. Durling  
Professor of Medicine  
Division of Hematology/Oncology  
Chair, Breast Disease Oriented Group  
Mayo Clinic  
Jacksonville, FL

**2013 Nancy Roach (BSC)**

Consumer Advocate  
C3: Colorectal Cancer Coalition  
Hood River, OR

## Clinical Trials and Translational Research Advisory Committee (Continued)

---

### Membership and Term

**2011 Daniel J. Sargent, Ph.D.**

Director  
Cancer Center Statistics  
Professor  
Division of Biostatistics  
Mayo Clinic Comprehensive Cancer Center  
Rochester, MN

**2011 Richard L. Schilsky, M.D. (BSA)**

Professor of Medicine  
Associate Dean for Clinical Research  
Biological Sciences Division  
University of Chicago  
Pritzker School of Medicine  
Chicago, IL

**2013 Mitchell D. Schnall, M.D., Ph.D.**

Matthew J. Wilson Professor of Radiology  
Magnetic Resonance Imaging Section  
Department of Radiology  
The University of Pennsylvania School of Medicine  
Philadelphia, PA

**2010 Joel E. Tepper, M.D.**

Professor and Chair  
Department of Radiation Oncology  
University of North Carolina School of  
Medicine  
Chapel Hill, NC

**2011 James L. Wade, III, M.D.**

Director of Medical Oncology  
Department of Clinical Research  
Medical Director  
Decatur Memorial Hospital Cancer Care  
Institute  
Decatur Memorial Hospital  
Decatur, IL

Executive Secretary

Sheila A. Prindiville, M.D., MPH

### Ex Officio Members

**James H. Doroshow, M.D.**

Director  
Division of Cancer Treatment and Diagnosis  
National Cancer Institute  
National Institutes of Health  
Bethesda, MD

**Paulette Gray, Ph.D.**

Director  
Division of Extramural Activities  
National Cancer Institute  
National Institutes of Health  
Bethesda, MD

**Rosemarie Hakim, Ph.D., M.S.**

Epidemiologist  
Centers for Medicare and Medicaid Services  
Baltimore, MD

**Lee Helman, M.D.**

Chief  
Pediatric Oncology Branch  
Scientific Director for Clinical Research  
Center for Cancer Research  
National Cancer Institute  
National Institutes of Health  
Bethesda, MD

**Michael J. Kelley, M.D., FACP**

National Program Director for Oncology  
Veterans Health Administration  
Department of Veterans Affairs  
Washington, DC

**Richard Pazdur, M.D., FACP**

Director  
Division of Oncology Drug Products  
U.S. Food and Drug Administration  
Rockville, MD

**John F. Potter, M.D.**

Director  
United States Military Cancer Institute  
Walter Reed Army Medical Center  
Washington, DC

**Alan Rabson, M.D.**

Deputy Director  
National Cancer Institute  
National Institutes of Health  
Bethesda, MD

**Clinical Trials and Translational Research Advisory Committee (Continued)**  
**CTAC Subcommittee**

**Ad hoc Coordination Subcommittee**

James L. Abbruzzese, M.D. (Chair)  
Chairman  
Department of Gastrointestinal Medical Oncology  
The University of Texas M.D. Anderson Cancer Center  
Houston, TX

Laurence H. Baker, D.O. (Ad hoc)  
Chairman  
Southwest Oncology Group  
Professor of Medicine  
University of Michigan  
Ann Arbor, MI

Charles Erlichman, M.D. (Ad hoc)  
Chairman  
Department of Oncology  
Deputy Director for Clinical Affairs  
Mayo Clinic Cancer Center  
Rochester, MN

Richard L. Schilsky, M.D.  
Professor of Medicine  
Associate Dean of Clinical Research  
Biological Sciences Division  
University of Chicago  
Pritzker School of Medicine  
Chicago, IL

James H. Doroshow, M.D. (Ad hoc)  
Director  
Division of Cancer Treatment and Diagnosis  
National Cancer Institute  
National Institutes of Health  
Bethesda, MD

Sherwood Githens, Ph.D. (Ad hoc)  
Scientific Review Officer  
Special Review and Logistics Branch  
Division of Extramural Activities  
National Cancer Institute  
National Institutes of Health  
Bethesda, MD

Paulette Gray, Ph.D. (Ad hoc)  
Director  
Division of Extramural Activities  
National Cancer Institute  
National Institutes of Health  
Bethesda, MD

Sheila A. Prindiville, M.D., MPH  
Director  
Coordinating Center for Clinical Trials  
Office of the Director  
National Cancer Institute  
National Institutes of Health  
Bethesda, MD

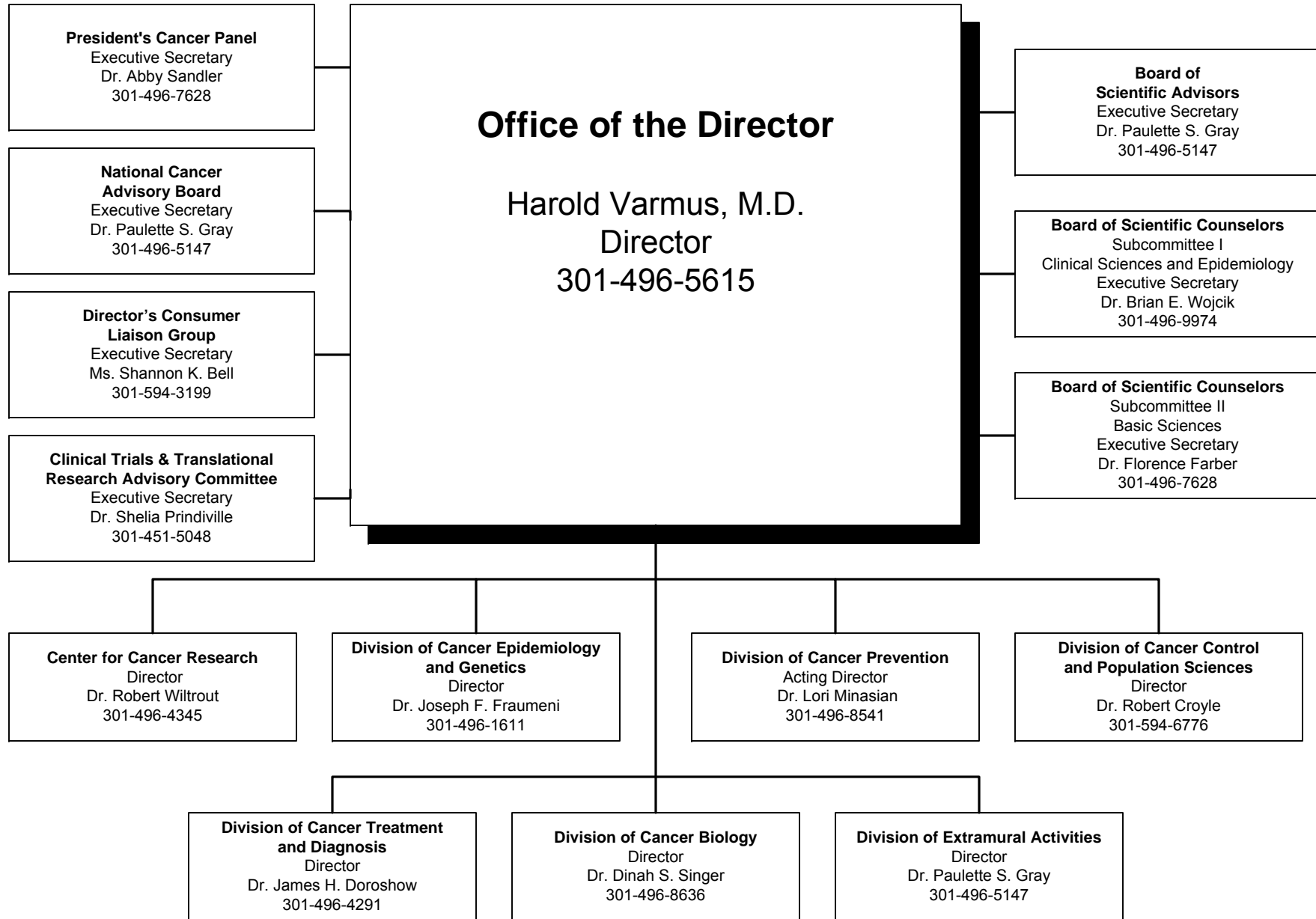
Executive Secretary  
301-451-5048

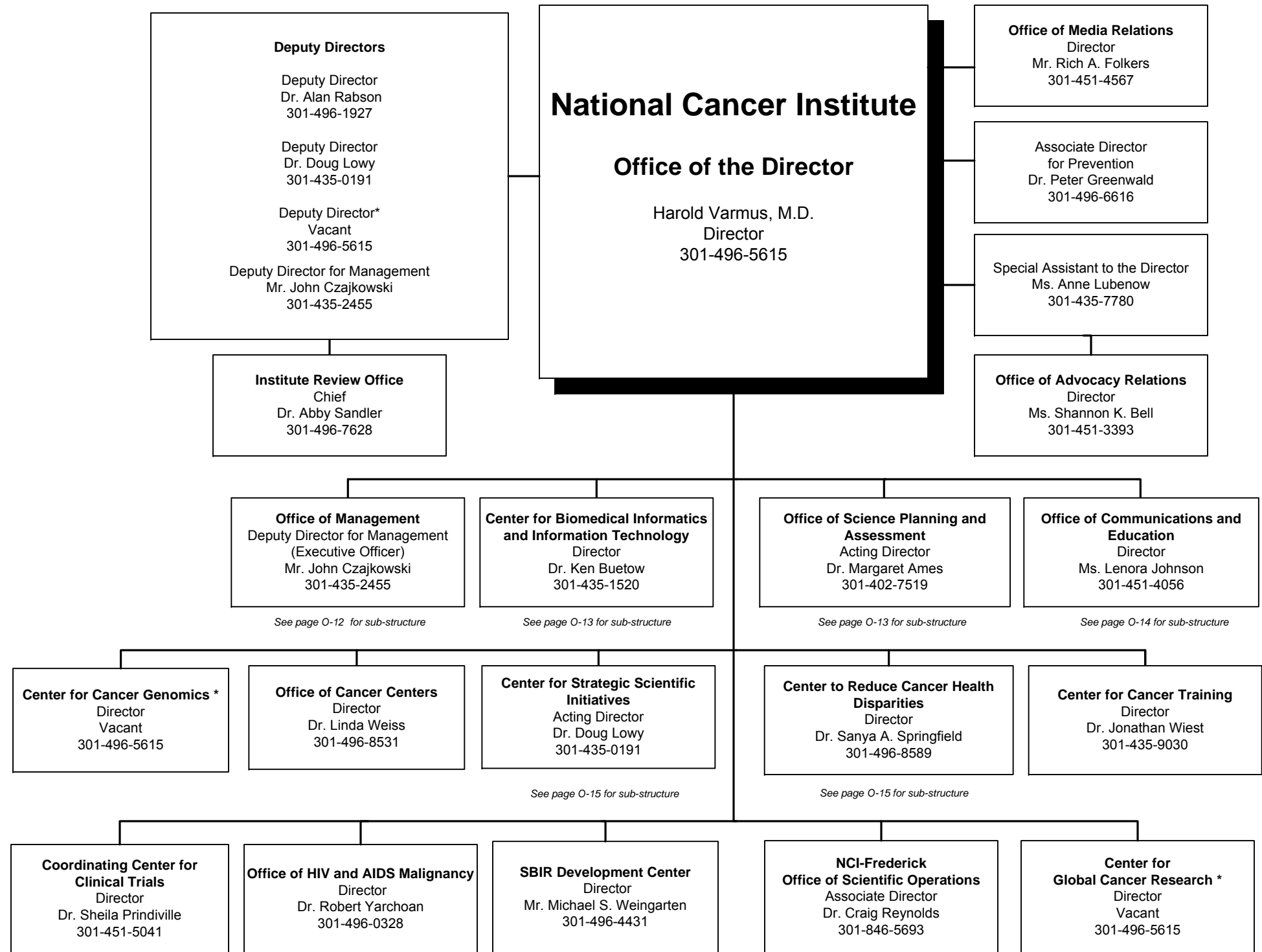
## NCI Director's Consumer Liaison Group

---

|   |             |   |             |
|---|-------------|---|-------------|
| <b>Ms. Gwen Darien, Chair</b><br>Samuel Waxman Cancer Foundation  | <b>2012</b> | <b>Dr. Deborah Morosini</b><br>Lung Cancer Alliance   | <b>2012</b> |
| <b>Mr. Everett E. Dodson, Vice Chair</b><br>Georgetown University Lombardi<br>Comprehensive Cancer Center | <b>2011</b> | <b>Ms. Phyllis Pettit Nassi</b><br>University of Utah Huntsman Cancer<br>Institute  | <b>2012</b> |
| <b>Dr. Jeff Allen</b><br>Friends of Cancer Research   | <b>2013</b> | <b>Mr. Jon Retzlaff</b><br>American Association for Cancer<br>Research  | <b>2014</b> |
| <b>Ms. Susan Braun</b><br>Commonweal  | <b>2013</b> | <b>Ms. Wendy Selig</b><br>Melanoma Research Alliance  | <b>2012</b> |
| <b>Ms. Marie Dahlstrom</b><br>De La Mano Frente Al Cancer: Latino<br>Cancer Coalition                     | <b>2011</b> | <b>Mr. Josh Sommer</b><br>The Chordoma Foundation   | <b>2014</b> |
| <b>Ms. Joyce Wilcox Graff</b><br>VHL Family Alliance  | <b>2011</b> | <b>Ms. Arlene Wahwasuck</b><br>Four Tribes Women's Wellness Coalition   | <b>2011</b> |
| <b>Ms. Cheryl Jernigan</b><br>Susan G. Komen for the Cure   | <b>2012</b> | <b>Mr. Max Wallace</b><br>Accelerate Brain Cancer Cure  | <b>2013</b> |
| <b>Dr. Michelle McMurry</b><br>Food and Drug Administration   | <b>2014</b> |   |             |
|   |             | <b>Mr. Ben Carollo, MPA</b><br>Executive Secretary<br>Director, Office of Advocacy Relations<br>National Cancer Institute<br>31 Center Drive, Room 10A28<br>Bethesda, MD 20892-2580 |             |

# National Cancer Institute



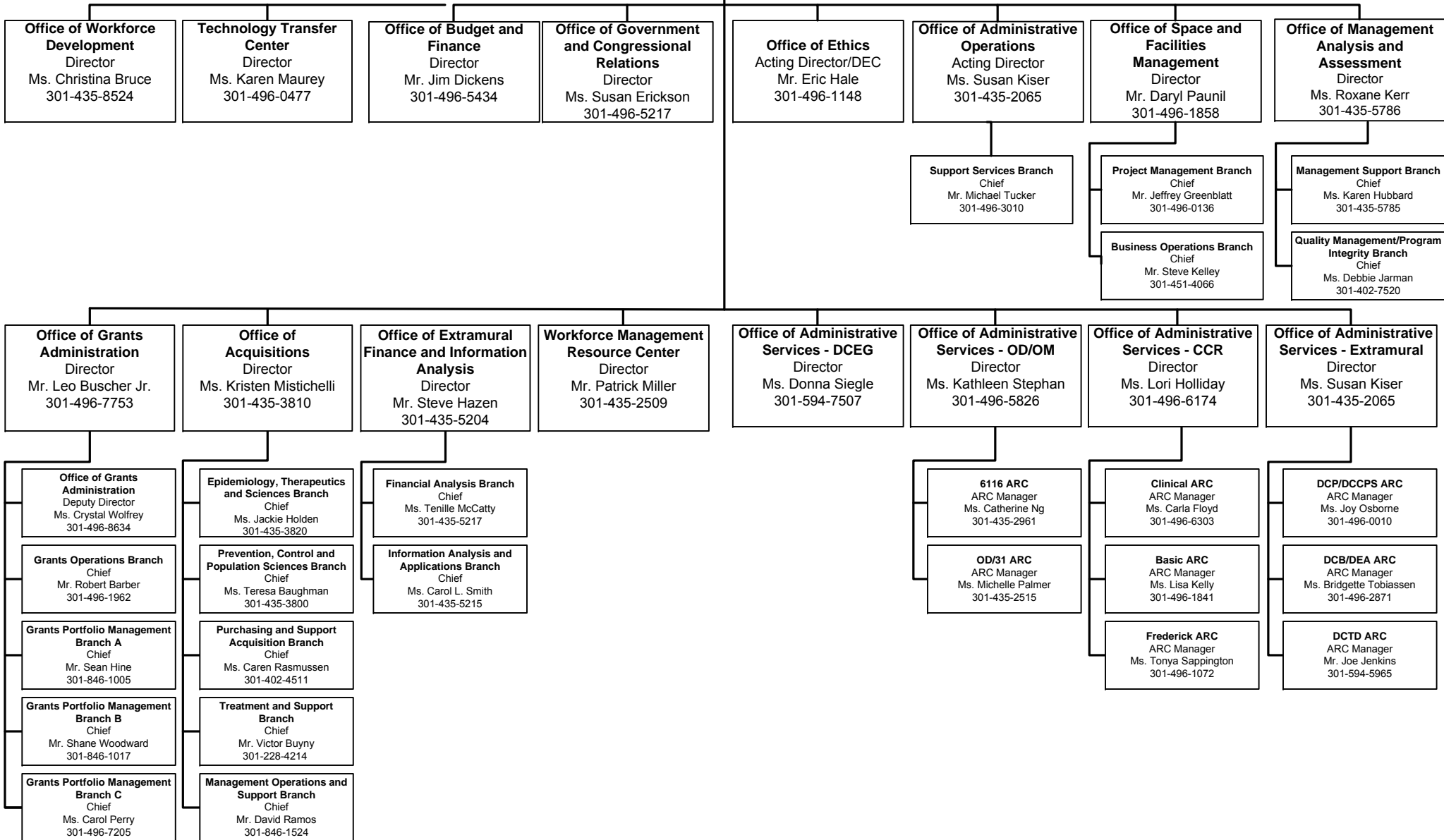




# Office of Management

Deputy Director for Management  
(Executive Officer)  
Mr. John Czajkowski  
301-435-2455

Deputy Executive Officer  
Mr. Jason Donaldson  
301-827-3577



### Center for Biomedical Informatics and Information Technology

Director  
Dr. Ken Buetow  
301-435-1520

Deputy Director  
Dr. George Komatsoulis  
301-451-2881

**Infrastructure Branch**  
Chief  
Mr. Eric Williams  
301-594-0764

**Information Technology Support Branch**  
Chief  
Vacant

**Informatics Operations Branch**  
Chief  
Ms. Caterina Lasome  
301-594-1604

**Resource Management Branch**  
Acting Chief  
Dr. George Komatsoulis  
301-451-2881

### Office of Science Planning and Assessment

Acting Director  
Dr. Margaret Ames  
301-402-7519

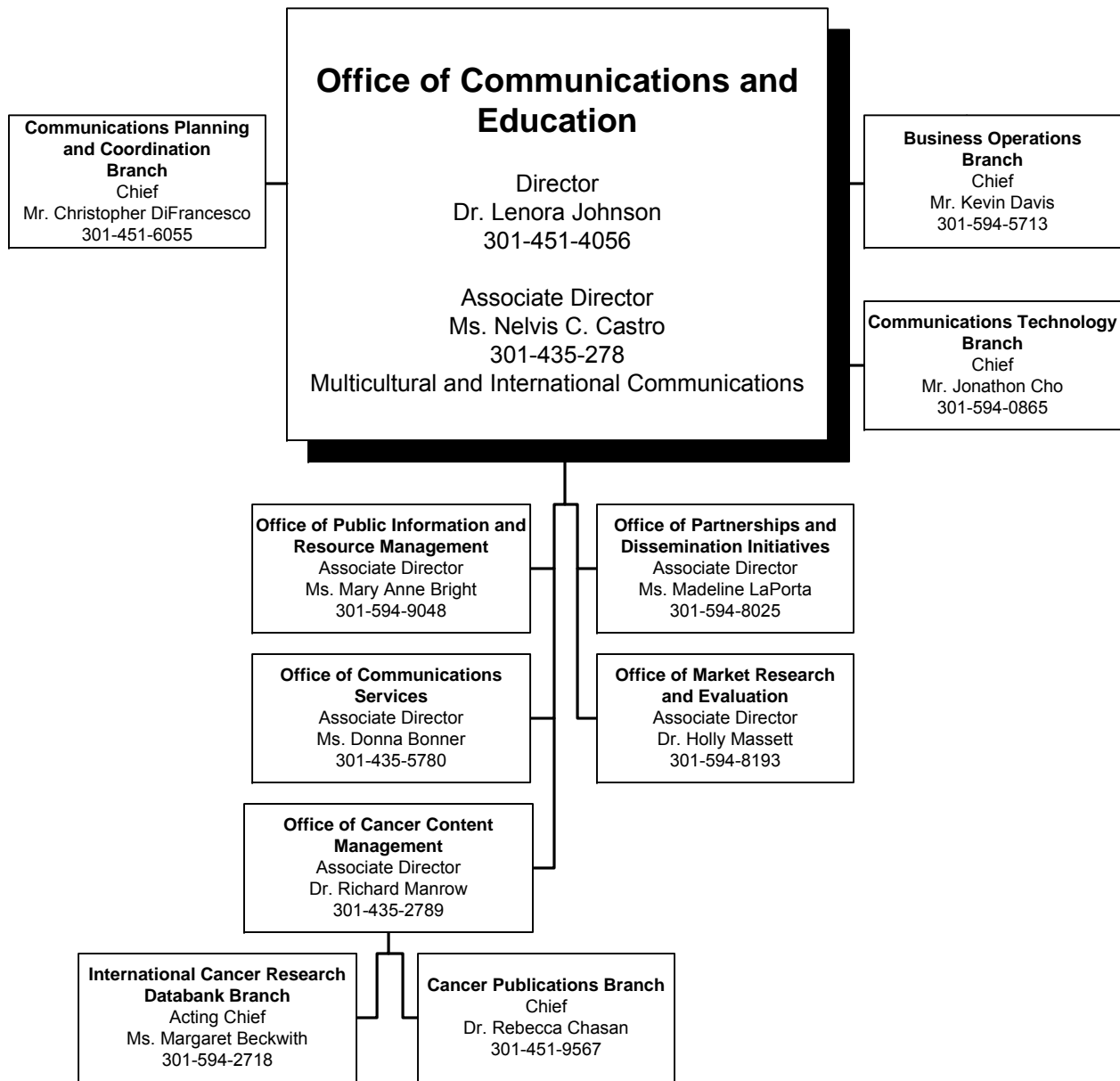
Acting Deputy Director  
Dr. Lisa Stevens  
301-435-3861

**Women's Health Officer**  
Ms. Karen Parker  
301-451-9462

**Science Planning Branch**  
Chief  
Dr. Lisa Stevens  
301-435-3861

**Program Assessment Branch**  
Chief  
Dr. James Corrigan  
301-435-3856

**Program Implementation Branch**  
Chief  
Ms. Susanne Strickland  
301-496-5516



**Center for Strategic Scientific Initiatives**

Acting Director  
Dr. Doug Lowy  
301-435-0191

Deputy Director  
Dr. Jerry Lee  
301-496-1045

**Center to Reduce Cancer Health Disparities**

Director  
Dr. Sanya Springfield  
301-496-8589

Deputy Director  
Dr. Deborah Duran  
301-496-8589

**Office of Cancer Genomics**  
Director  
Dr. Daniela S. Gerhard  
301-451-8027

**Office of Cancer Nanotechnology Research**  
Director  
Dr. Piotr Grodzinski  
301-594-4177

**Office of Biorepositories and Biospecimen Research**  
Director  
Dr. Carolyn C. Compton  
301-594-2212

**Office of Cancer Clinical Proteomics Research**  
Director  
Dr. Henry Rodriguez  
301-594-6345

**Knowledge Management and Special Projects Branch**  
Chief  
Ms. Lisa Krueger  
301-451-5115

**Office of Physical Sciences-Oncology**  
Acting Director  
Dr. Jerry Lee  
301-496-1045

**The Cancer Genome Atlas Program Office**  
Director  
Vacant  
301-435-0191

**Center for Global Cancer Health Research**  
Director  
Vacant  
301-496-1045

**Disparities Research Branch**  
Chief  
Dr. Ken Chu  
301-435-9213

**Diversity Training Branch**  
Chief  
Dr. Alexis Bakos  
301-435-9044

**Office of International Affairs**  
Director  
Dr. Joe Harford  
301-496-5534

**Office of Latin American Cancer Program Development**  
Director  
Dr. Jorge Gomez  
301-435-9040

# Center for Cancer Research Office of the Director

Director  
Dr. Robert Wiltrout  
301-496-4345

Dr. Lee Helman  
Scientific Director for Clinical Research  
301-496-4346

Dr. Lee Helman  
Deputy Director  
301-496-4346

Dr. Glenn Merlino  
Deputy Director  
301-496-4270

Dr. Mark Udey  
Deputy Director  
301-496-2481

Dr. Ronald Gress  
Deputy Director  
301-496-1791

**Dermatology Branch**  
Chief  
Dr. Mark Udey  
301-496-1741

**Office of Clinical Director**  
Chief  
Dr. William Dahut  
301-435-8183

**Gene Regulation and Chromosome Biology Laboratory**  
Chief  
Dr. Jeffrey Strathern  
301-846-1274

**Laboratory of Experimental Carcinogenesis**  
Chief  
Dr. Snorri Thorgeirsson  
301-496-1935

**Laboratory of Pathology**  
Chief  
Dr. J. Carl Oberholtzer  
301-435-5152

**Radiation Oncology Branch**  
Chief  
Dr. Kevin Camphausen  
301-496-5457

**Genetics Branch**  
Chief  
Dr. Paul Meltzer  
301-594-5283

**Neuro-Oncology Branch**  
Chief  
Dr. Howard Fine  
301-435-4024

**HIV and AIDS Malignancy Branch**  
Chief  
Dr. Robert Yarchoan  
301-496-0328

**Medical Oncology Branch**  
Chief  
Dr. Giuseppe Giaccone  
301-496-4257

**Laboratory of Cell Biology**  
Chief  
Dr. Michael Gottesman  
301-496-1530

**Laboratory of Mammary Biology & Tumorigenesis**  
Acting Chief  
Dr. David Salomon  
301-496-9536

**Pediatric Oncology Branch**  
Chief  
Dr. Crystal Mackall  
301-402-5940

**Radiation Biology Branch**  
Chief  
Dr. James Mitchell  
301-496-7511

**Molecular Imaging Program**  
Chief  
Dr. Peter Choyke  
301-451-6039

**Laboratory of Tumor Immunology and Biology**  
Chief  
Dr. Jeffrey Schlom  
301-496-4343

**Metabolism Branch**  
Chief  
Dr. Thomas Waldmann  
301-496-6653

**Surgery Branch**  
Chief  
Dr. Steven Rosenberg  
301-496-4164

**Laboratory of Cellular and Molecular Biology**  
Chief  
Dr. Larry Samelson  
301-496-9683

**Laboratory of Molecular Pharmacology**  
Chief  
Dr. Yves Pommier  
301-496-5944

**Urologic Oncology Branch**  
Chief  
Dr. W. Marston Linehan  
301-496-6353

**Experimental Transplantational and Immunology Branch**  
Chief  
Dr. Ronald Gress  
301-496-1791

**Laboratory of Human Carcinogenesis**  
Chief  
Dr. Curtis Harris  
301-496-2048

**Laboratory of Cellular Oncology**  
Chief  
Dr. Douglas Lowy  
301-496-9513

**Cell and Cancer Biology Branch**  
Chief  
Dr. Kathleen Kelly  
301-435-4651

**Center for Cancer Research  
Office of the Director**

Director  
Dr. Robert Wiltrout  
301-496-4345

Dr. Lee Helman  
Scientific Director for Clinical Research  
301-496-4346

Dr. Jeffrey Strathern  
Deputy Director  
301-846-1274

Dr. Lawrence Samelson  
Deputy Director  
301-496-4346

**Cancer and Developmental  
Biology Laboratory**  
Chief  
Dr. Alan Perantoni  
301-846-6529

**HIV Drug Resistance Program**  
Director  
Dr. Stephen Hughes

**HIV DRP Retroviral  
Replication Laboratory**  
Chief  
Dr. Stephen Hughes

**Host Virus Interaction Branch**  
Acting Chief  
Dr. Stephen Hughes  
301-846-1619

**Cancer and Inflammation  
Program**  
Director  
Dr. Giorgio Trinchieri

**Laboratory of Experimental  
Immunology**  
Chief  
Dr. Giorgio Trinchieri  
301-846-1323

**Laboratory of Molecular  
Immunoregulation**  
Chief  
Dr. Joost Oppenheim  
301-846-1551

**Laboratory of Cancer  
Prevention**  
Chief  
Dr. Nancy Colburn  
301-846-1342

**Laboratory of Cell and  
Developmental Signaling**  
Chief  
Dr. Debbie Morrison  
301-846-1733

**Molecular Discovery Program**  
Director  
Dr. R. Andrew Byrd  
301-846-1407

**Chemical Biology Laboratory**  
Chief  
Dr. Joel Schneider  
301-846-5954

**Molecular Targets Laboratory**  
Chief  
Dr. James McMahon  
301-846-5391

**Structural Biophysics  
Laboratory**  
Chief  
Dr. R. Andrew Byrd  
301-846-1407

**CCR Nanobiology Program**  
Chief  
Dr. Robert Blumenthal  
301-846-5532

**Laboratory of Protein  
Dynamics and Signaling**  
Chief  
Dr. Allan Weissman  
301-846-1222

**Macromolecular  
Crystallography Laboratory**  
Chief  
Dr. Alexander Wlodawer  
301-846-5036

**Mouse Cancer Genetics  
Program**  
Director  
Dr. Terry Van Dyke  
301-846-1988

**Laboratory of Genomic  
Diversity**  
Chief  
Dr. Stephen O'Brien  
301-846-1296

**Laboratory of Comparative  
Carcinogenesis**  
Chief  
Dr. Larry Keefer  
301-846-1467

**Experimental Immunology  
Branch**  
Chief  
Dr. Alfred Singer  
301-496-5461

**Laboratory of Cancer Biology  
and Genetics**  
Co-Chiefs  
Dr. Stuart Yuspa  
301-496-2162  
Dr. Glenn Merlino  
301-496-4270

**Laboratory of Biochemistry  
and Molecular Biology**  
Chief  
Dr. Carl Wu  
301-496-3029

**Laboratory of Immune Cell  
Biology**  
Chief  
Dr. Jonathan Ashwell  
301-496-4931

**Vaccine Branch**  
Chief  
Dr. Jay Berzofsky  
301-496-6874  
Clinical Component Deputy  
Dr. Mark Udey  
301-496-2481

**Laboratory of Metabolism**  
Chief  
Dr. Frank Gonzalez  
301-435-5587

**Laboratory of Receptor  
Biology and Gene Expression**  
Chief  
Dr. Gordon Hager  
301-496-9867

**Laboratory of Molecular  
Biology**  
Chief  
Dr. Ira Pastan  
301-496-4797  
Krietman Clinical  
Component Deputy  
Dr. Lee Helman  
301-496-4346

**Basic Research Laboratory**  
Chief  
Dr. Douglas Lowy  
301-496-9513

**Laboratory of Population  
Genetics**  
Chief  
Dr. Kenneth Buetow  
301-435-8953

## Division of Cancer Biology

### Office of the Director

Director

Dr. Dinah S. Singer  
301-496-8636

Deputy Director  
Dr. Dan Gallahan  
301-496-8636

Associate Director  
Dr. Cheryl Marks  
301-594-8778

Associate Director  
Dr. Suresh Mohla  
301-435-1878

#### Cancer Etiology Branch

Chief  
Dr. Don Blair  
301-496-9740

#### Tumor Biology and Metastasis Branch

Chief  
Dr. Suresh Mohla  
301-435-1878

#### Cancer Immunology and Hematology Branch

Chief  
Dr. R. Allan Mufson  
301-496-7815

#### DNA and Chromosome Aberrations Branch

Chief  
Dr. Judith Mietz  
301-496-9326

#### Cancer Cell Biology Branch

Chief  
Dr. Barbara Spalholz  
301-496-7028

#### Structural Biology and Molecular Applications Branch

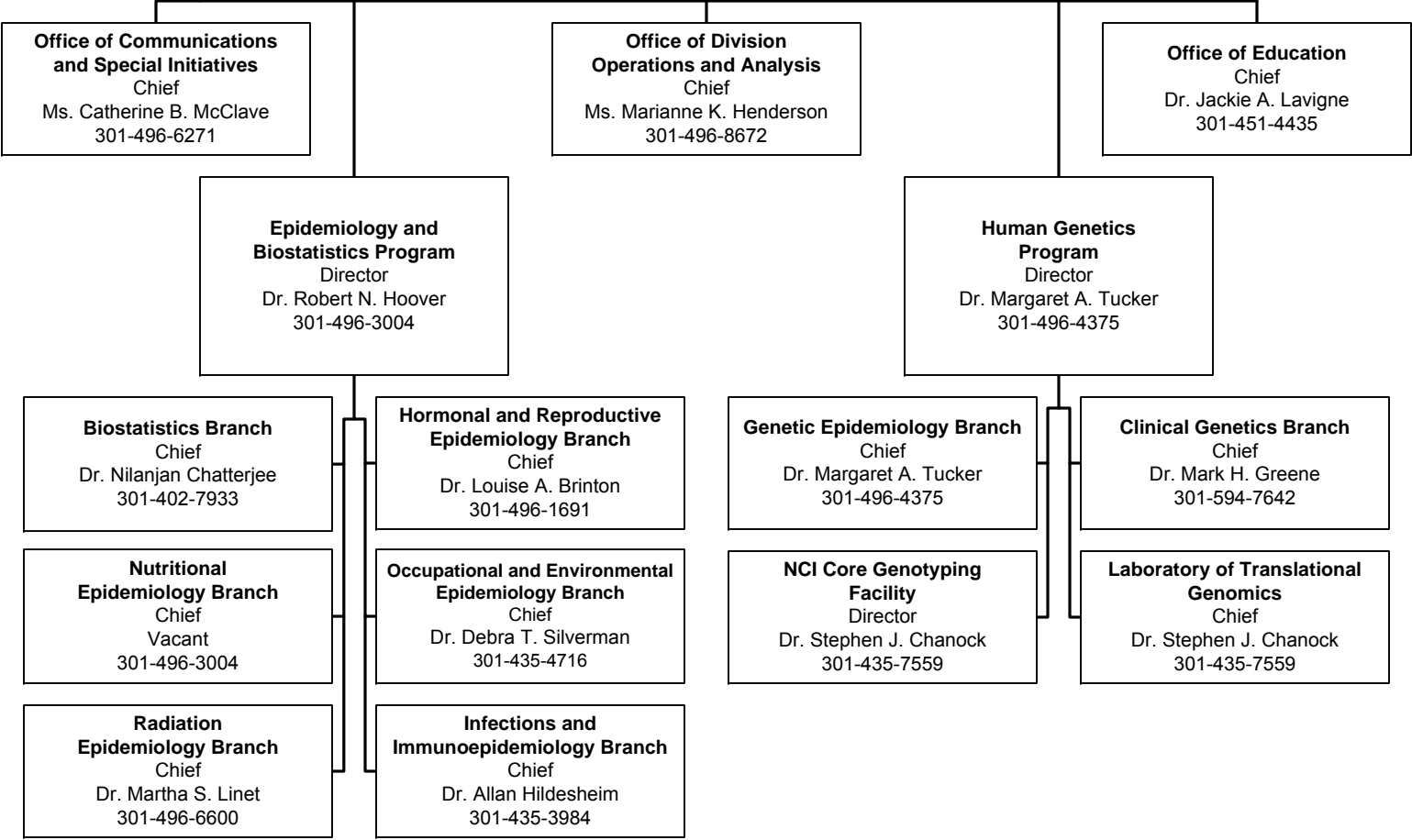
Chief  
Dr. Jennifer Couch  
301-435-5226

**Division of Cancer  
Epidemiology and Genetics**

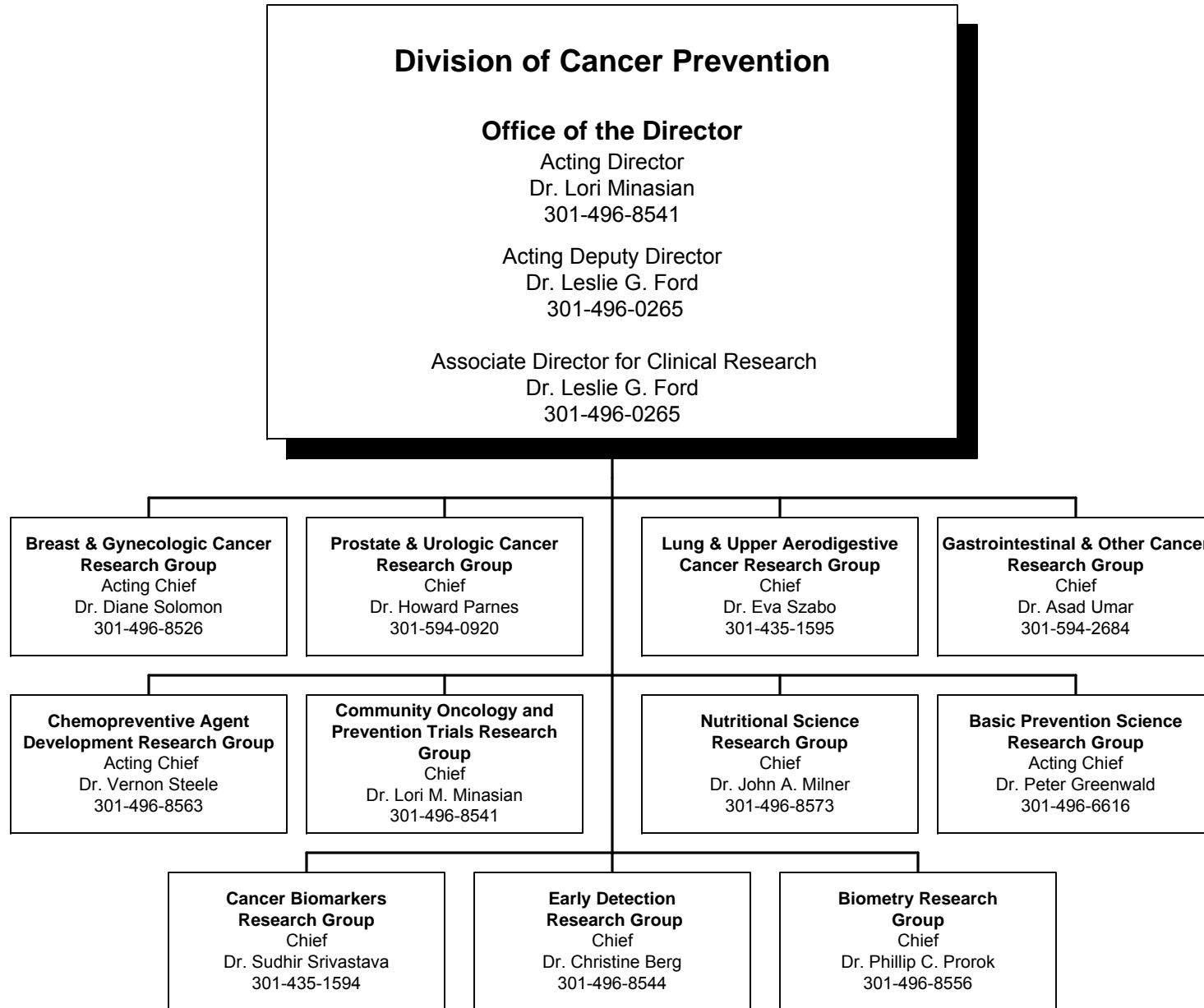
**Office of the Director**

Director  
Dr. Joseph F. Fraumeni, Jr.  
301-496-1611

Deputy Director  
Dr. Shelia H. Zahm  
301-496-8157







# Division of Cancer Control and Population Sciences

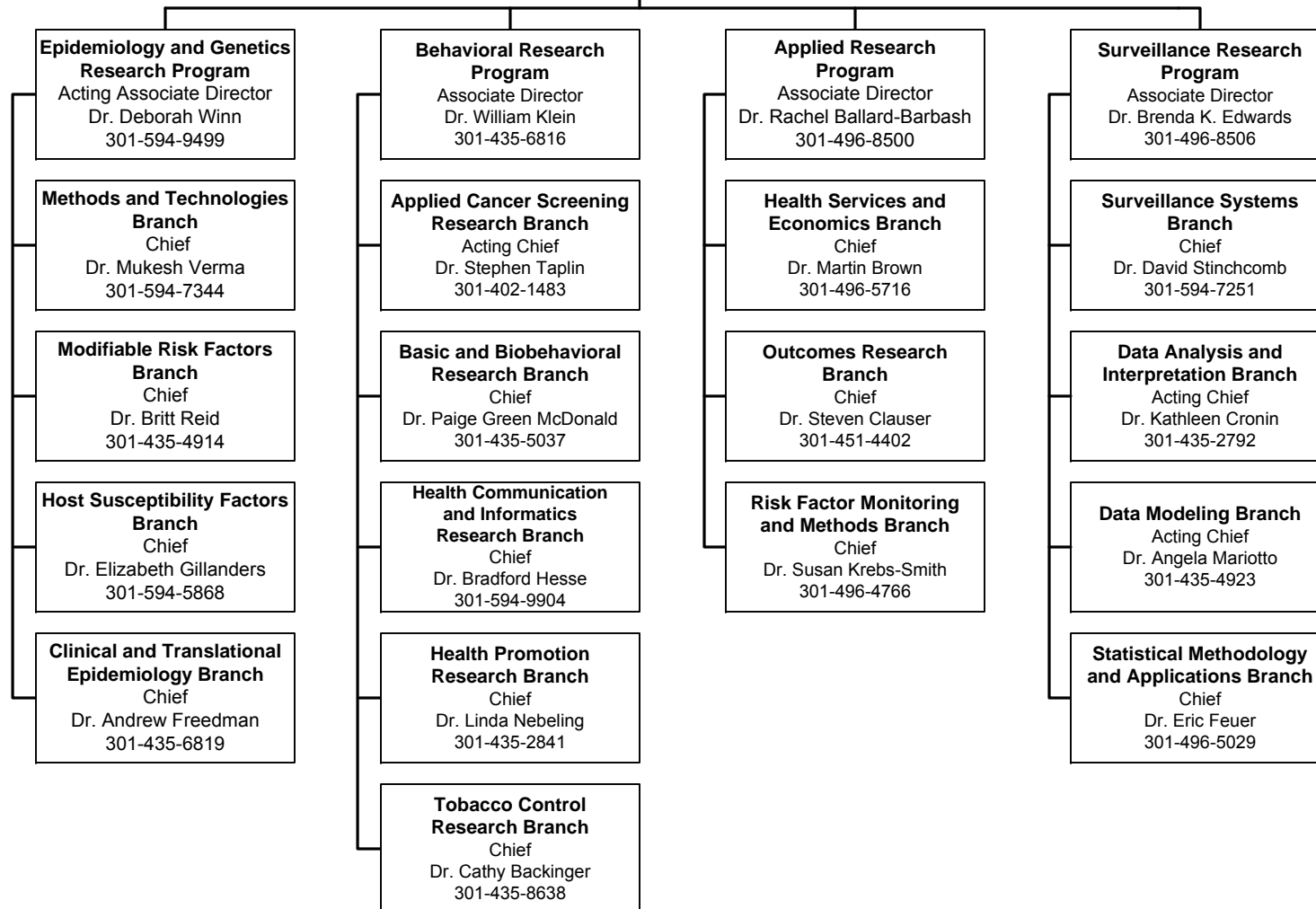
## Office of the Director

Director  
Dr. Robert Croyle  
301-594-6776

Deputy Director  
Dr. Deborah Winn  
301-594-9499

Deputy Director for  
Dissemination and  
Implementation Science  
Dr. Russell Glasgow  
301-435-4912

Office of Cancer  
Survivorship  
Director  
Dr. Julia H. Rowland  
301-402-2746



# Division of Cancer Treatment and Diagnosis

## Office of the Director

Director

Dr. James H. Doroshow  
301-496-4291

Deputy Director

Dr. Joseph Tomaszewski  
301-496-6711

**Biometrics Research Branch**  
Chief  
Dr. Richard Simon  
301-496-0975

**Office of Cancer Complementary and Alternative Medicine**  
Associate Director  
Dr. Jeffrey White  
301-435-7980

**Radiation Research Program**  
Associate Director  
Dr. C. Norman Coleman  
301-496-6111

**Radiotherapy Development Branch**  
Acting Chief  
Dr. Bhadrasain Vikram  
301-496-6111

**Molecular Radiation Therapeutics Branch**  
Chief  
Dr. Stephen S. Yoo  
301-496-3080

**Clinical Radiation Oncology Branch**  
Chief  
Dr. Bhadrasain Vikram  
301-496-6111

**Cancer Therapy Evaluation Program**  
Associate Director  
Dr. Jeffrey Abrams  
301-496-6138

**Investigational Drug Branch**  
Chief  
Dr. James Zwiebel  
301-496-1196

**Clinical Investigations Branch**  
Chief  
Dr. Margaret Mooney  
301-496-2522

**Pharmaceutical Management Branch**  
Chief  
Mr. Charles Hall  
301-496-5725

**Regulatory Affairs Branch**  
Chief  
Dr. Jan Casadei  
301-496-7912

**Clinical Trials Monitoring Branch**  
Acting Chief  
Mr. Gary Smith  
301-402-5147

**Clinical Grants and Contracts Branch**  
Chief  
Dr. Roy Wu  
301-496-8866

**Clinical Trials Operations and Informatics Branch**  
Chief  
Mr. Steven Friedman  
301-435-9183

**Developmental Therapeutics Program**  
Associate Director  
Dr. Jerry M. Collins  
301-496-8720  
  
Deputy Associate Director  
Dr. James Crowell  
301-435-9152

**Information Technology Branch**  
Chief  
Dr. Dan Zaharevitz  
301-496-8747

**Biological Testing Branch**  
Chief  
Dr. Melinda Hollingshead  
301-846-5065

**Biological Resources Branch**  
Chief  
Dr. Stephen Creekmore  
301-846-1098

**Toxicology and Pharmacology Branch**  
Chief  
Dr. Myrtle Davis  
301-443-3404

**Screening Technologies Branch**  
Chief  
Dr. Robert Shoemaker  
301-846-6845

**Natural Products Branch**  
Chief  
Dr. David Newman  
301-846-5387

**Drug Synthesis and Chemistry Branch**  
Chief  
Dr. Joel Morris  
301-435-9151

**Grants & Contracts Operations Branch**  
Chief  
Dr. Mary Wolpert-DeFilippes  
301-496-8783

**Pharmaceutical Resources Branch**  
Chief  
Dr. Rao Vishnuvajjala  
301-496-8780

**Translational Research Program**  
Acting Associate Director  
Dr. Toby T. Hecht  
301-435-9043

**Cancer Diagnosis Program**  
Associate Director  
Dr. Barbara Conley  
301-435-9004

**Diagnostics Evaluation Branch**  
Chief  
Dr. John Jessup  
301-496-1591

**Resources Development Branch**  
Chief  
Dr. Irina Lubensky  
301-496-7147

**Diagnostic Biomarkers and Technology Branch**  
Chief  
Vacant

**Cancer Imaging Program**  
Acting Associate Director  
Dr. Paula Jacobs  
301-435-9181

Deputy Associate Director  
Dr. Paula Jacobs  
301-435-9181

**Diagnostic Imaging Branch**  
Chief  
Dr. Lalitha Shankar  
301-451-8491

**Molecular Imaging Branch**  
Acting Chief  
Dr. Paula Jacobs  
301-435-9181

**Image-Guided Intervention Branch**  
Acting Chief  
Dr. Keyvan Farahani  
301-451-2651

**Imaging Technology Development Branch**  
Chief  
Dr. Laurence Clarke  
301-435-9190

# Division of Extramural Activities

## Office of the Director

Director

Dr. Paulette S. Gray  
301-496-5147

Acting Deputy Director

Dr. Paulette S. Gray  
301-496-5147

Assistant Director

Dr. Cedric W. Long  
301-496-9138

## Office of Extramural Applications

Associate Director  
Mr. Amir Sahar-Khiz  
301-594-1331

### Applied Information Systems Branch

Chief  
Mr. Greg Fischetti  
301-594-1067

### Research Analysis and Evaluation Branch

Chief  
Ms. Marilyn R. Gaston  
301-594-1111

## Program and Review Extramural Staff Training Office

Chief  
Dr. Michael Small  
301-402-0996

## Office of Referral, Review and Program Coordination

Acting Associate Director  
Dr. Shamala Srinivas  
301-594-1224

### Research Programs Review Branch

Chief  
Dr. Olivia T. Bartlett  
301-594-2501

### Resources and Training Review Branch

Chief  
Dr. Robert E. Bird  
301-496-7978

### Program Coordination and Referral Branch

Chief  
Dr. Christopher L. Hatch  
301-594-1403

### Special Review and Logistics Branch

Chief  
Dr. Kirt J. Vener  
301-496-7174



## Links to Cancer Statistics

---

### SOURCES:

#### **2009 Report to the Nation on the Status of Cancer, 1975-2006**

*Annual Report to the Nation on the Status of Cancer, 1975-2006 provides information related to incidence, death rates, and trends in the United States. Contains a special feature on trends in lung cancer and related cancer control efforts.* [http://seer.cancer.gov/report\\_to\\_nation/](http://seer.cancer.gov/report_to_nation/)

#### **Fast Stats**

*Interactive tool providing tables, charts, and graphs with information related to incidence, mortality, survival and stage, prevalence, and lifetime risk (probability of developing or dying from cancer).*

<http://seer.cancer.gov/faststats/>

#### **SEER Cancer Statistics Review, 1975-2007**

*Annually updated tables and graphs displaying cancer statistics by cancer site, year of diagnosis, age, race, sex, and geography, diagnosed between 1975 and 2007. Searchable cancer statistics related to incidence, mortality, survival, prevalence, and lifetime risk.*

[http://seer.cancer.gov/csr/1975\\_2007/index.html](http://seer.cancer.gov/csr/1975_2007/index.html)

#### **Cancer Stat Fact Sheets**

*Collection of statistical summaries for a number of common cancer types, with information related to incidence, mortality, survival, stage, prevalence, and lifetime risk.*

<http://seer.cancer.gov/statfacts/>

### REPORTS:

#### **Costs of Cancer Care, 1963-2004**

[http://progressreport.cancer.gov/2007/doc\\_detail.asp?pid=1&did=2007&chid=75&coid=726&mid=](http://progressreport.cancer.gov/2007/doc_detail.asp?pid=1&did=2007&chid=75&coid=726&mid=)

#### **Relationship of Cancer to the Leading Causes of Death in the United States, 1975 and 2007**

[http://seer.cancer.gov/csr/1975\\_2007/results\\_merged/topic\\_lead\\_cod.pdf](http://seer.cancer.gov/csr/1975_2007/results_merged/topic_lead_cod.pdf)

#### **Estimated New Cancer Cases and Deaths for 2010**

[http://seer.cancer.gov/csr/1975\\_2007/results\\_single/sect\\_01\\_table.01.pdf](http://seer.cancer.gov/csr/1975_2007/results_single/sect_01_table.01.pdf)

#### **Person-Years of Life Lost Due to Cancer and Average Years of Life Lost Per Person Dying of Cancer, All Races, Both Sexes, 2007**

[http://seer.cancer.gov/csr/1975\\_2007/results\\_merged/topic\\_year\\_lost.pdf](http://seer.cancer.gov/csr/1975_2007/results_merged/topic_year_lost.pdf)

#### **Incidence, Mortality, and Five-Year Relative Survival Rates by Cancer Site**

[http://seer.cancer.gov/csr/1975\\_2007/results\\_single/sect\\_01\\_table.04\\_2pgs.pdf](http://seer.cancer.gov/csr/1975_2007/results_single/sect_01_table.04_2pgs.pdf)

#### **Annual Percent Change in Incidence and Mortality Rates, 1997-2007**

[http://seer.cancer.gov/csr/1975\\_2007/results\\_merged/topic\\_graph\\_trends.pdf](http://seer.cancer.gov/csr/1975_2007/results_merged/topic_graph_trends.pdf)

#### **Age-Adjusted SEER Incidence Rates and Trends for the Top 15 Cancer Sites by Race/Ethnicity**

[http://seer.cancer.gov/csr/1975\\_2007/results\\_merged/topic\\_inc\\_trends.pdf](http://seer.cancer.gov/csr/1975_2007/results_merged/topic_inc_trends.pdf)

#### **Age-Adjusted U.S. Death Rates and Trends for the Top 15 Cancer Sites by Race/Ethnicity**

[http://seer.cancer.gov/csr/1975\\_2007/results\\_merged/topic\\_mor\\_trends.pdf](http://seer.cancer.gov/csr/1975_2007/results_merged/topic_mor_trends.pdf)

#### **Prevalence of Cancer: Estimated Number of Persons Diagnosed with Cancer, 5- and 32-Year Limited Duration**

[http://seer.cancer.gov/csr/1975\\_2007/results\\_merged/topic\\_prevcounts.pdf](http://seer.cancer.gov/csr/1975_2007/results_merged/topic_prevcounts.pdf)



# Fiscal Year 2010 Budget

(Dollars in Thousands)

---

**A. Actual Obligations Resulting From Appropriated Funds:**

|   |                  |
|---|------------------|
| FY 2010 Appropriation                                   | \$5,103,388      |
| Supplemental Appropriations                             | \$0              |
| Transfer under the HHS Secretary's transfer authority   | -\$760           |
| NIH Transfer for NIH Genes and Environmental Initiative | -4,459           |
| Lapse   | -22              |
| <b>Actual Obligations Subtotal</b>                      | <b>5,098,147</b> |

**B. Reimbursable Obligations:**

|                |        |
|----------------|--------|
| Reimbursements | 18,738 |
|----------------|--------|

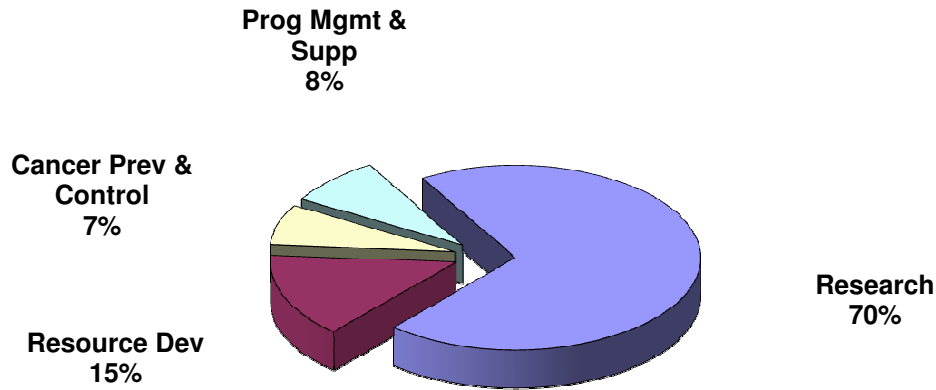
**C. Total NCI Obligations: \$5,116,885 \***

\*EXCLUDES projects awarded with Stamp Out Breast Cancer funds as well as royalty income (see page B-7)



# Program Structure Fiscal Year 2010

(Dollars in Thousands)

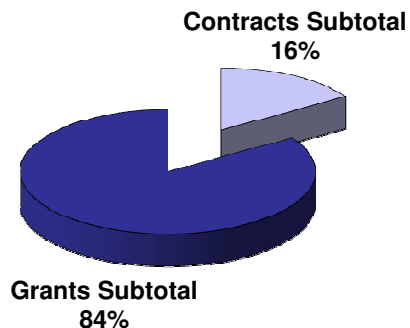


| Budget Activity                       | Amount           | Percent       |
|---------------------------------------|------------------|---------------|
| <b>Research:</b>                      |                  |               |
| Cancer Causation                      | \$1,185,839      | 23.3%         |
| Detection and Diagnosis Research      | 429,532          | 8.4%          |
| Treatment Research                    | 1,156,144        | 22.7%         |
| Cancer Biology                        | 783,019          | 15.4%         |
| <b>Subtotal Research</b>              | <b>3,554,534</b> | <b>69.8%</b>  |
| <b>Resource Development:</b>          |                  |               |
| Cancer Centers Support                | 568,424          | 11.1%         |
| Research Manpower Development         | 179,346          | 3.5%          |
| Buildings and Facilities              | 7,920            | 0.2%          |
| <b>Subtotal Resource Development</b>  | <b>755,690</b>   | <b>14.8%</b>  |
| <b>Cancer Prevention and Control</b>  | <b>364,107</b>   | <b>7.1%</b>   |
| <b>Program Management and Support</b> | <b>423,816</b>   | <b>8.3%</b>   |
| <b>*Total NCI</b>                     | <b>5,098,147</b> | <b>100.0%</b> |

\*EXCLUDES projects awarded with Stamp Out Breast Cancer funds as well as royalty income (see page B-7)

# Extramural Funds Fiscal Year 2010

(Dollars in Thousands)



| Mechanism                                 | Amount             | Percent      |
|---|--------------------|--------------|
| <b>Contracts:</b>                         |                    |              |
| R&D Contracts                             | 613,762            | 15.7%        |
| Buildings and Facilities                  | 7,920              | 0.2%         |
| Construction Contracts                    | 0                  | 0.0%         |
| <b>Subtotal Contracts</b>                 | <b>621,682</b>     | <b>15.9%</b> |
| <b>Grants:</b>                            |                    |              |
| Research Project Grants                   | 2,168,058          | 55.4%        |
| Cancer Centers/Specialized Centers/SPORES | 611,133            | 15.6%        |
| NRSA                                      | 67,564             | 1.7%         |
| Other Research Grants                     | 442,613            | 11.3%        |
| Construction Grants                       | 0                  | 0.0%         |
| <b>Subtotal Grants</b>                    | <b>3,289,368</b>   | <b>84.1%</b> |
| Total Extramural Funds                    | 3,911,050          | 100.0%       |
| Total Intramural/RMS                      | 1,187,097          |              |
| <b>*Total NCI</b>                         | <b>\$5,098,147</b> |              |

\*EXCLUDES projects awarded with Stamp Out Breast Cancer funds as well as royalty income (see page B-7)

## NCI Obligations by Mechanism, Fiscal Year 2010

(Dollars in Thousands)

|                                  |  | Number       | Amount           | % of Total     |
|----------------------------------|--|--------------|------------------|----------------|
| <b>Research Project Grants</b>   | Non-Competing                                    | 3,619        | 1,536,844        | 30.2%          |
|                                  | Administrative Supplements                       | (254)        | 28,947           | 0.6%           |
|                                  | Competing  | 1,253        | 516,598          | 10.1%          |
|                                  | Subtotal, without SBIR/STTR Grants               | 4,872        | 2,082,389        | 40.9%          |
|                                  | SBIR/STTR Grants                                 | 207          | 85,669           | 1.7%           |
|                                  | <b>Subtotal, Research Project Grants</b>         | <b>5,079</b> | <b>2,168,058</b> | <b>42.5%</b>   |
| <b>Centers &amp; SPOREs</b>      | Cancer Centers Grants-P20/P30                    | 66           | 295,856          | 5.8%           |
|                                  | SPOREs-P50                                       | 63           | 133,810          | 2.6%           |
|                                  | Other P50s/P20s                                  | 19           | 38,765           | 0.8%           |
|                                  | Other Specialized Centers                        | 102          | 142,702          | 2.8%           |
|                                  | <b>Subtotal, Centers</b>                         | <b>250</b>   | <b>611,133</b>   | <b>12.0%</b>   |
| <b>Other Research</b>            | Career Program                                   |              |                  | 0.0%           |
|                                  | Temin & Minority Mentored Awards-K01             | 77           | 10,823           | 0.2%           |
|                                  | Estab. Inv. Award-K05                            | 21           | 3,134            | 0.1%           |
|                                  | Preventive Oncology-K07                          | 97           | 13,278           | 0.3%           |
|                                  | Clinical Investigator-K08                        | 83           | 12,408           | 0.2%           |
|                                  | Clinical Oncology-K12                            | 18           | 12,922           | 0.3%           |
|                                  | Transitional Career Development-K22              | 30           | 4,963            | 0.1%           |
|                                  | Mentored Patient Oriented RCDA-K23               | 40           | 5,812            | 0.1%           |
|                                  | Mid-Career Invest. & Patient Orient. Res-K24     | 20           | 3,422            | 0.1%           |
|                                  | Mentored Quant. Res Career-K25                   | 25           | 3,311            | 0.1%           |
|                                  | Inst. Curr. Award-K30                            | 0            | 0                | 0.0%           |
|                                  | Pathway to Independence Awards-K99               | 41           | 4,841            | 0.1%           |
|                                  | <b>Subtotal, Career Program</b>                  | <b>452</b>   | <b>74,914</b>    | <b>1.5%</b>    |
|                                  | Cancer Education Program-R25                     | 91           | 35,444           | 0.7%           |
|                                  | Clinical Cooperative Groups-U10                  | 131          | 254,487          | 5.0%           |
|                                  | Minority Biomedical Support-S06                  | 0            | 466              | 0.0%           |
|                                  | Rsch Enhance-SC1 & Pilot Research - SC2          | 6            | 1,348            | 0.0%           |
|                                  | Continuing Education                             | 6            | 685              | 0.0%           |
|                                  | Resource Grants-R24/U24                          | 43           | 67,144           | 1.3%           |
|                                  | Explor Coop Agreement-U56                        | 2            | 862              | 0.0%           |
|                                  | Global Infect. Disease Rsrch Training Prog - D43 | 9            | 5,599            | 0.1%           |
|                                  | Conference Grants-R13                            | 87           | 1,664            | 0.0%           |
|                                  | <b>Subtotal, Other Research Grants</b>           | <b>827</b>   | <b>442,613</b>   | <b>8.7%</b>    |
| <b>Subtotal, Research Grants</b> |  | <b>6,156</b> | <b>3,221,804</b> | <b>63.2%</b>   |
| <b>NRSA Fellowships</b>          | <i>Trainees:</i>                                 | <b>1,428</b> | <b>67,564</b>    | <b>1.3%</b>    |
| <b>R&amp;D Contracts</b>         | R&D Contracts                                    | 399          | 588,742          | 11.6%          |
|                                  | SBIR Contracts                                   | 71           | 25,020           | 0.5%           |
|                                  | <b>Subtotal, Contracts</b>                       | <b>470</b>   | <b>613,762</b>   | <b>12.0%</b>   |
| <b>Intramural Research</b>       | Program  |              | 676,730          | 13.3%          |
|                                  | NIH Management Fund/SSF Assessment               |              | 128,602          | 2.5%           |
|                                  | <b>Subtotal, Intramural Research</b>             | <i>FTEs:</i> | <b>1,934</b>     | <b>805,332</b> |
| <b>RMS</b>                       | Research Mgmt and Support                        |              | 345,412          | 6.8%           |
|                                  | NIH Management Fund/SSF Assessment               |              | 36,353           | 0.7%           |
|                                  | <b>Subtotal, RMS</b>                             | <i>FTEs:</i> | <b>1,122</b>     | <b>381,765</b> |
| <b>Buildings and Facilities</b>  |  |              | <b>7,920</b>     | <b>0.2%</b>    |
| <b>Construction</b>              |  |              | <b>0</b>         | <b>0.0%</b>    |
| <b>*Total NCI</b>                | <i>FTEs:</i>                                     | <b>3,056</b> | <b>5,098,147</b> | <b>100.0%</b>  |

\*EXCLUDES projects awarded with Stamp Out Breast Cancer funds as well as royalty income (see page B-7)

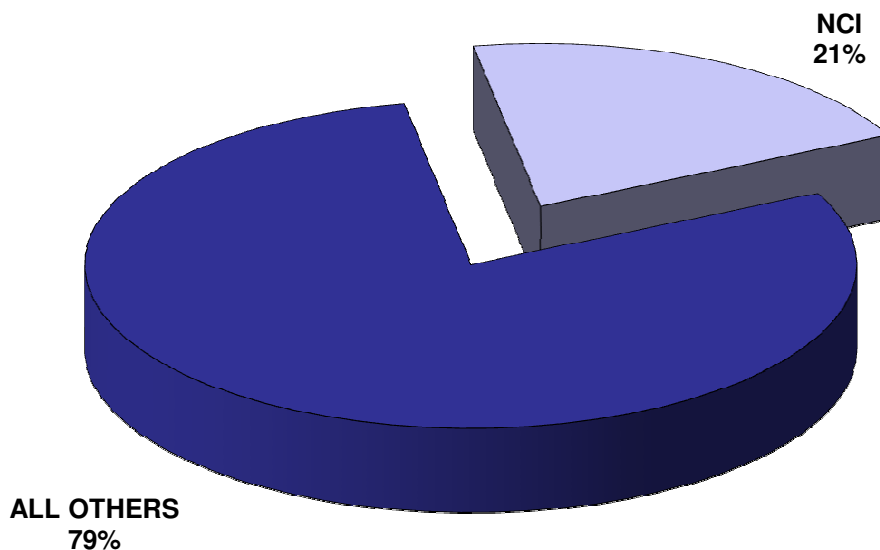
## Division Obligations by Mechanism, Fiscal Year 2010

(Dollars in Thousands)

| CCR            | DCEG          | DCTD           | DCB           | DCCPS          | DCP            | DEA           | OD               | Research Grants  | Program Support |
|----------------|---------------|----------------|---------------|----------------|----------------|---------------|------------------|------------------|-----------------|
|                |               |                |               |                |                |               |                  | 1,461,515        | 75,329          |
|                |               |                |               |                |                |               |                  | 28,947           |                 |
|                |               |                |               |                |                |               |                  | 516,598          |                 |
|                |               |                |               |                |                |               |                  | 2,007,060        | 75,329          |
|                |               |                |               |                |                |               |                  | 85,669           |                 |
|                |               |                |               |                |                |               |                  | <b>2,092,729</b> | <b>75,329</b>   |
|                |               |                |               |                |                |               | 295,856          |                  |                 |
|                |               | 133,193        |               |                |                |               | 617              |                  |                 |
|                |               | 16,095         |               | 22,039         | 400            |               | 231              |                  |                 |
|                |               | 7,595          | 29,848        | 920            |                |               | 104,339          |                  |                 |
|                |               | <b>156,883</b> | <b>29,848</b> | <b>22,959</b>  | <b>400</b>     |               | <b>401,043</b>   |                  |                 |
|                |               |                |               |                |                |               | 10,823           |                  |                 |
|                |               |                |               |                |                |               | 3,134            |                  |                 |
|                |               |                |               |                |                |               | 13,278           |                  |                 |
|                |               |                |               |                |                |               | 12,408           |                  |                 |
|                |               |                |               |                |                |               | 12,922           |                  |                 |
|                |               |                |               |                |                |               | 4,963            |                  |                 |
|                |               |                |               |                |                |               | 5,812            |                  |                 |
|                |               |                |               |                |                |               | 3,422            |                  |                 |
|                |               |                |               |                |                |               | 3,311            |                  |                 |
|                |               |                |               |                |                |               | 4,841            |                  |                 |
|                |               |                |               |                |                |               | <b>74,914</b>    |                  |                 |
|                |               |                |               |                |                |               | 35,444           |                  |                 |
|                |               | 154,279        |               |                | 93,624         |               | 6,584            |                  |                 |
|                |               |                |               |                |                |               |                  | 466              |                 |
|                |               |                |               |                |                |               |                  | 1,348            |                 |
|                |               |                |               |                |                |               |                  | 685              |                 |
|                |               |                |               |                |                |               |                  | 67,144           |                 |
|                |               |                |               |                |                |               |                  | 862              |                 |
|                |               |                |               |                |                |               |                  | 5,599            |                 |
|                |               |                |               |                |                |               |                  | 1,664            |                 |
|                |               | <b>154,279</b> | <b>0</b>      | <b>0</b>       | <b>93,624</b>  |               | <b>42,028</b>    | <b>77,768</b>    |                 |
|                |               | <b>311,162</b> | <b>29,848</b> | <b>22,959</b>  | <b>94,024</b>  |               | <b>517,985</b>   | <b>2,170,497</b> | <b>75,329</b>   |
|                |               |                |               |                |                |               | <b>67,564</b>    |                  |                 |
|                | 28,675        | 120,341        | 515           | 72,775         | 51,470         |               | 220,544          |                  | 94,422          |
|                |               |                |               |                |                |               | 25,020           |                  |                 |
|                | <b>28,675</b> | <b>120,341</b> | <b>515</b>    | <b>72,775</b>  | <b>51,470</b>  |               | <b>245,564</b>   |                  | <b>94,422</b>   |
| 438,887        | 67,401        |                |               |                |                |               | 159,461          |                  | 10,981          |
|                |               |                |               |                |                |               |                  |                  | 128,602         |
| <b>438,887</b> | <b>67,401</b> |                |               |                |                |               | <b>159,461</b>   |                  | <b>139,583</b>  |
|                |               | 46,533         | 10,106        | 32,079         | 16,943         | 22,584        | 176,126          |                  | 41,041          |
|                |               |                |               |                |                |               |                  |                  | 36,353          |
|                |               | <b>46,533</b>  | <b>10,106</b> | <b>32,079</b>  | <b>16,943</b>  | <b>22,584</b> | <b>176,126</b>   |                  | <b>77,394</b>   |
|                |               |                |               |                |                |               | 7,920            |                  |                 |
| <b>438,887</b> | <b>96,076</b> | <b>478,036</b> | <b>40,469</b> | <b>127,813</b> | <b>162,437</b> | <b>22,584</b> | <b>1,174,620</b> | <b>2,170,497</b> | <b>386,728</b>  |

# NIH Management Fund, Service & Supply Fund, and GSA Rent Fiscal Year 2010

(Dollars in Thousands)



| DISTRIBUTION OF NCI PAYMENT                  | Amount      | Share of NCI |
|--|-------------|--------------|
| Clinical Center                              | \$100,777   | 61.1%        |
| Center for Scientific Review                 | 9,564       | 5.8%         |
| Center for Information Technology            | 4,919       | 3.0%         |
| Service and Supply Fund Assessment           | 16,325      | 9.9%         |
| Other Research Services                      | 13,661      | 8.3%         |
| Other OD                                     | 19,709      | 12.0%        |
| *Total Management Fund and SSF               | 164,955     | 100.0%       |
| Other NIH Institutes Management Fund and SSF | 1,418,920   |              |
| Total NIH Management Fund and SSF            | \$1,583,875 |              |

The Management Fund provides for the financing of certain common research and administrative support activities which are required in the operations of NIH:

*Clinical Center:* Admissions and follow-up, anesthesiology, diagnostic x-ray, nuclear medicine, clinical pathology, blood bank, rehabilitation medicine, pharmacy, medical records, nursing services, patient nutrition service, housekeeping services, laundry, and social work.

*Center for Scientific Review:* Initial scientific review of applications and assignment of research grant applications to institutes.

*Center for Information Technology:* Research and development program in which concepts and methods of computer science are applied to biomedical problems.

*GSA Rental Payments for Space:* All building rental costs, including utilities and guard services.

*Other Research Services:* Procurement, safety, engineering, biomedical engineering, veterinary resources, and library services.

*Service & Supply Fund:* Mainframe computing, enterprise IT software planning and development, engineering planning and design, printing, telecommunications, procurement, shipping and receiving, motor pool, research animals, fabrication and maintenance of scientific equipment, utilities and plant maintenance, and biomedical engineering.

## Special Sources of Funds

### CRADAs

As a result of the Federal Technology Transfer Act of 1986 (PL 99-502), government laboratories are authorized to enter into Cooperative Research and Development Agreements (CRADAs) with private sector entities. Licensing agreements are usually incorporated into the CRADA document which addresses patent rights attributable to research supported under the CRADA.

NCI CRADA Receipts Deposited to the U.S. Treasury  
(Dollars in Thousands)

| Fiscal Year | Carryover<br>from Prior<br>Year | Collections | Obligations |
|-------------|---------------------------------|-------------|-------------|
| 1999        | 9,302                           | 3,645       | 4,707       |
| 2000        | 8,240                           | 2,717       | 4,618       |
| 2001        | 6,339                           | 5,295       | 2,770       |
| 2002        | 8,864                           | 5,048       | 2,380       |
| 2003        | 11,533                          | 5,221       | 5,361       |
| 2004        | 11,351                          | 5,080       | 5,469       |
| 2005        | 10,962                          | 6,858       | 4,253       |
| 2006        | 13,567                          | 6,142       | 7,125       |
| 2007        | 12,584                          | 9,410       | 8,360       |
| 2008        | 13,634                          | 6,677       | 7,200       |
| 2009        | 13,111                          | 5,466       | 4,765       |
| 2010        | 13,813                          | 5,024       | 5,644       |

### Royalty Income

NCI retains a portion of the royalty income generated by the patents related to NCI-funded research. A major portion of this royalty income is used to reward employees of the laboratory, further scientific exchange, and for education and training in accordance with the terms of the Federal Technology Transfer Act (PL 99-502). Receipts are also used to support costs associated with processing and collecting royalty income and for technology transfer efforts at NCI and NIH.

NCI Royalty Income Funding History  
(Dollars in Thousands)

| Years       | Collections* | Inventor<br>Payments | Other  |
|-------------|--------------|----------------------|--------|
| 1999/2000   | 21,160       | 4,695                | 16,465 |
| 2000/2001   | 37,040       | 4,811                | 32,229 |
| 2001/2003   | 27,443       | 6,210                | 21,233 |
| 2002/2004   | 42,565       | 3,961                | 38,604 |
| 2003/2005   | 27,271       | 5,262                | 22,009 |
| 2004/2006   | 26,923       | 4,950                | 21,973 |
| 2005/2007   | 34,086       | 5,745                | 28,341 |
| 2006/2008   | 29,811       | 6,853                | 22,958 |
| 2007/2009   | 36,344       | 7,210                | 29,134 |
| 2008/2010   | 50,269       | 8,192                | 42,077 |
| **2009/2011 | 51,621       | 10,223               | 41,398 |
| **2010/2012 | 58,515       | 12,305               | 46,210 |

\*Does not include assessments by NIH.

\*\*2009/2011 and 2010/2012 collections and payments are estimates.

### Stamp Out Breast Cancer

The Stamp Out Breast Cancer Act (PL 105-41) was established in August 1997, extended in July 2000 (PL 106-253) and November 2005 (PL 109-100) and again in December 2007 (PL 110-150). This act allows postal customers to contribute funding to breast cancer research through their voluntary purchases of special rate postage stamps from the U.S. Postal Service. Of the funds collected above the postage costs and administrative costs, the Act requires the USPS to transfer 70% to NIH and 30% to the Department of Defense. As of October 2010, NCI has received \$48,841,212. NCI has used these funds for research projects directed towards breast cancer research. Thus far, four major programs have been funded -- the "Insight Awards to Stamp Out Breast Cancer," the "Breast Cancer Research Stamp Exception Program," the "Breast Cancer Premalignancy Program" and a clinical trial to determine the risk of breast cancer recurrence. In FY 2010, \$2.590 million was obligated on Breast Cancer Stamp Fund programs.

## Funding for Various Research Areas

(Dollars in Millions)

The National Cancer Institute reports how appropriated funds are spent in a number of different categories or classifications including specific cancer sites, cancer types, diseases related to cancer, as well as types of research mechanisms. The table below represents funding levels for frequently requested research areas. These research areas do not represent the entire NCI research portfolio. Funding for these areas can overlap and do not add to the total NCI budget. For example, dollars for a clinical trial on breast cancer research would be included in both the Breast Cancer and the Clinical Trials lines in the table below. Similarly, a basic cancer research project may be relevant to cervical, uterine and ovarian cancers and relevant funding would be included in the figures for all three sites.

| Disease Area           | 2006      | 2007      | 2008      | 2009      | 2010      |
|------------------------|-----------|-----------|-----------|-----------|-----------|
|                        | Actual    | Actual    | Actual    | Actual    | Actual    |
| Total NCI Budget       | \$4,747.2 | \$4,792.6 | \$4,827.6 | \$4,966.9 | \$5,098.1 |
| AIDS                   | 253.7     | 253.7     | 258.5     | 265.9     | 272.1     |
| Brain & CNS            | 130.3     | 148.2     | 153.7     | 151.5     | 156.8     |
| Breast Cancer          | 584.7     | 572.4     | 572.6     | 599.5     | 631.2     |
| Cervical Cancer        | 83.3      | 82.4      | 76.8      | 77.8      | 77.0      |
| Clinical Trials        | 822.3     | 843.7     | 853.2     | 846.6     | 852.3     |
| Colorectal Cancer      | 244.1     | 258.4     | 273.7     | 264.2     | 270.4     |
| Head and Neck Cancers  | 71.3      | 66.2      | 76.1      | 77.1      | 62.7      |
| Hodgkins Disease       | 20.9      | 16.5      | 17.5      | 18.2      | 14.6      |
| Leukemia               | 223.5     | 205.5     | 216.4     | 220.6     | 239.7     |
| Liver Cancer           | 62.7      | 67.7      | 74.2      | 70.3      | 72.6      |
| Lung Cancer            | 242.9     | 226.9     | 247.6     | 246.9     | 281.9     |
| Melanoma               | 108.0     | 97.7      | 110.8     | 103.7     | 102.3     |
| Multiple Myeloma       | 30.3      | 32.3      | 41.5      | 45.2      | 48.5      |
| Non Hodgkin's Lymphoma | 114.1     | 113.0     | 122.6     | 130.9     | 122.4     |
| Ovarian Cancer         | 95.1      | 96.9      | 100.0     | 110.1     | 112.3     |
| Pancreatic Cancer      | 74.2      | 73.3      | 87.3      | 89.7      | 97.1      |
| Prostate Cancer        | 293.2     | 296.1     | 285.4     | 293.9     | 300.5     |
| Stomach Cancer         | 11.5      | 12.0      | 12.4      | 15.4      | 14.5      |
| Uterine Cancer         | 19.4      | 16.6      | 17.1      | 18.0      | 14.2      |

Note: These figures were created using NCI's coding methodology. More information about this methodology, as well as project listings for these categories and others, are available online through NCI's Funded Research Portfolio website.

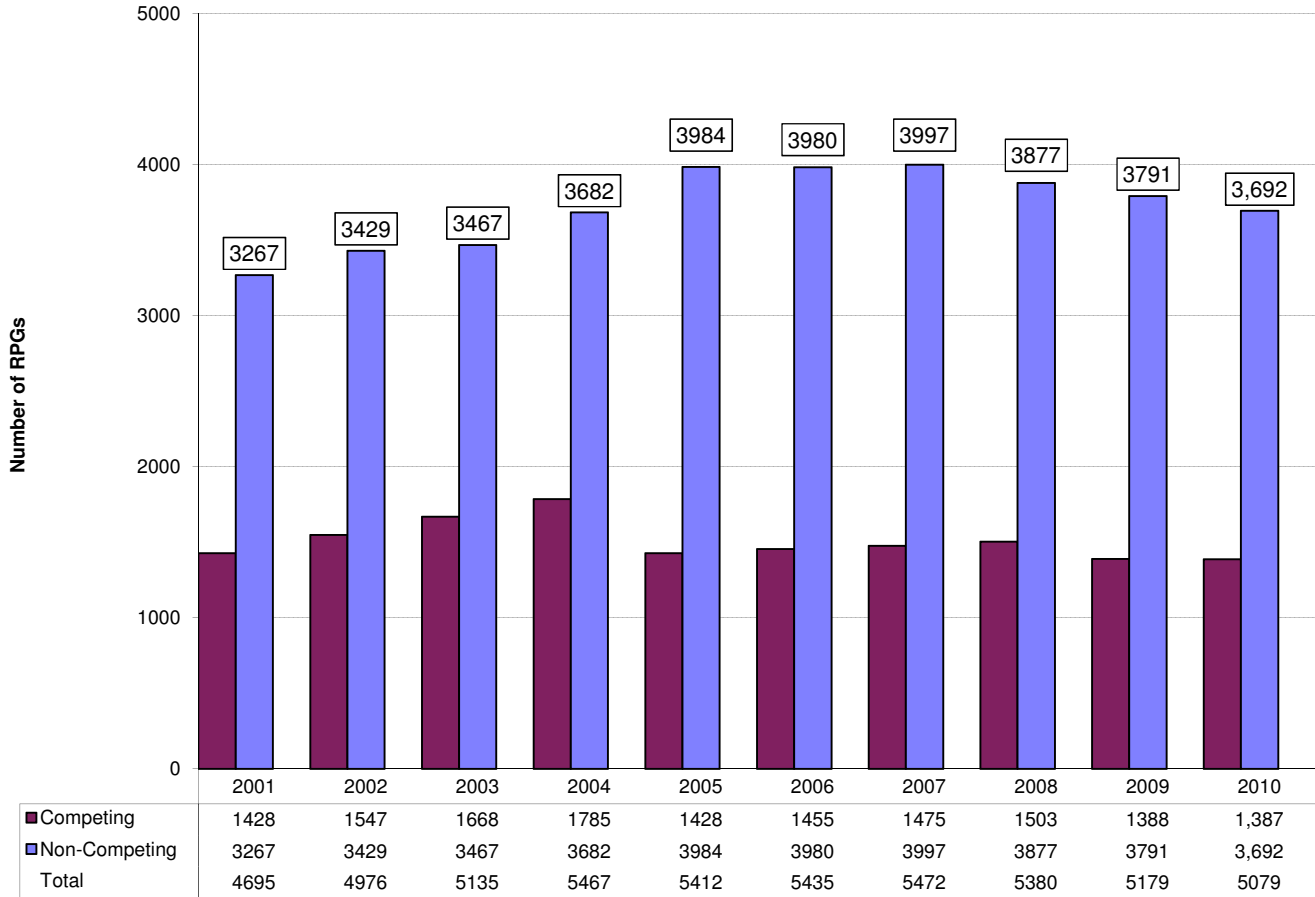
<http://fundedresearch.cancer.gov/>





## Research Project Grants Number of Awards Fiscal Years 2001-2010

*Includes Small Business Innovation Research and Small Business Technology Transfer Awards*



\*EXCLUDES projects awarded with Stamp Out Breast Cancer Funds.

## RPGs Requested and Awarded Fiscal Years 2001-2010

(Dollars in Thousands)

| Fiscal Year | Type          |            | Requested |             | Awarded      |                  | Success |
|-------------|---------------|------------|-----------|-------------|--------------|------------------|---------|
| 2001        | Competing     | New        | 4342      | \$1,374,538 | 1050         | \$290,707        | 27.3%   |
|             |               | Renewal    | 856       | 437,455     | 372          | 173,722          |         |
|             |               | Supplement | 29        | 11,108      | 6            | 1,214            |         |
|             |               | Subtotal   | 5227      | 1,823,101   | 1428         | 465,643          |         |
|             | Non-Competing |            |           |             | 3267         | 1,213,098        |         |
|             | Total         |            |           |             | <b>4695</b>  | <b>1,678,741</b> |         |
| 2002        | Competing     | New        | 4539      | \$1,407,475 | 1142         | \$302,217        | 28.4%   |
|             |               | Renewal    | 861       | 404,789     | 384          | 186,087          |         |
|             |               | Supplement | 42        | 8,512       | 21           | 3,499            |         |
|             |               | Subtotal   | 5442      | 1,820,776   | 1547         | 491,803          |         |
|             | Non-Competing |            |           |             | 3429         | 1,356,138        |         |
|             | Total         |            |           |             | <b>4976</b>  | <b>1,847,941</b> |         |
| 2003        | Competing     | New        | 5323      | \$1,675,039 | 1222         | \$347,446        | 26.5%   |
|             |               | Renewal    | 955       | 447,122     | 441          | 194,084          |         |
|             |               | Supplement | 20        | 4,671       | 5            | 1,338            |         |
|             |               | Subtotal   | 6298      | 2,126,832   | 1668         | 542,868          |         |
|             | Non-Competing |            |           |             | 3467         | 1,457,144        |         |
|             | Total         |            |           |             | <b>5135</b>  | <b>2,000,012</b> |         |
| 2004        | Competing     | New        | 6,558     | \$2,045,451 | 1,333        | \$339,925        | 23.6%   |
|             |               | Renewal    | 988       | 518,201     | 445          | 210,790          |         |
|             |               | Supplement | 24        | 8,337       | 7            | 2,196            |         |
|             |               | Subtotal   | 7,570     | 2,571,989   | 1,785        | 552,911          |         |
|             | Non-Competing |            |           |             | 3,682        | 1,549,727        |         |
|             | Total         |            |           |             | <b>5,467</b> | <b>2,102,638</b> |         |
| 2005        | Competing     | New        | 6,357     | \$2,239,503 | 1,086        | \$309,507        | 19.2%   |
|             |               | Renewal    | 1,050     | 473,898     | 335          | 162,857          |         |
|             |               | Supplement | 22        | 6,147       | 7            | 1,185            |         |
|             |               | Subtotal   | 7,429     | 2,719,548   | 1,428        | 473,549          |         |
|             | Non-Competing |            |           |             | 3,984        | 1,656,614        |         |
|             | Total         |            |           |             | <b>5,412</b> | <b>2,130,164</b> |         |
| 2006        | Competing     | New        | 6,585     | \$2,215,548 | 1,105        | \$293,912        | 19.2%   |
|             |               | Renewal    | 984       | 542,799     | 348          | 170,110          |         |
|             |               | Supplement | 13        | 4,098       | 2            | 681              |         |
|             |               | Subtotal   | 7,582     | 2,762,445   | 1,455        | 464,703          |         |
|             | Non-Competing |            |           |             | 3,980        | 1,633,442        |         |
|             | Total         |            |           |             | <b>5,435</b> | <b>2,098,145</b> |         |
| 2007        | Competing     | New        | 6,428     | \$2,116,286 | 1,178        | \$306,431        | 20.2%   |
|             |               | Renewal    | 864       | 482,655     | 295          | 163,225          |         |
|             |               | Supplement | 12        | 3,513       | 2            | 609              |         |
|             |               | Subtotal   | 7,304     | 2,602,454   | 1,475        | 470,265          |         |
|             | Non-Competing |            |           |             | 3,997        | 1,582,828        |         |
|             | Total         |            |           |             | <b>5,472</b> | <b>2,053,093</b> |         |
| 2008        | Competing     | New        | 5,944     | \$1,991,089 | 1,150        | \$324,070        | 21.7%   |
|             |               | Renewal    | 966       | 515,784     | 352          | 187,458          |         |
|             |               | Supplement | 1         | 408         | 1            | 338              |         |
|             |               | Subtotal   | 6,911     | 2,507,281   | 1,503        | 511,866          |         |
|             | Non-Competing |            |           |             | 3,877        | 1,509,611        |         |
|             | Total         |            |           |             | <b>5,380</b> | <b>2,021,477</b> |         |
| 2009        | Competing     | New        | 6,167     | \$2,069,518 | 1,029        | \$320,980        | 19.4%   |
|             |               | Renewal    | 1,000     | 500,201     | 358          | 177,853          |         |
|             |               | Supplement | 5         | 1,141       | 1            | 67               |         |
|             |               | Subtotal   | 7,172     | 2,570,860   | 1,388        | 498,900          |         |
|             | Non-Competing |            |           |             | 3,791        | 1,564,139        |         |
|             | Total         |            |           |             | <b>5,179</b> | <b>2,063,039</b> |         |
| 2010        | Competing     | New        | 7,494     | \$2,776,315 | 1,041        | \$375,830        | 16.3%   |
|             |               | Renewal    | 1,007     | 591,060     | 343          | 183,675          |         |
|             |               | Supplement | 18        | 6,805       | 3            | 1,491            |         |
|             |               | Subtotal   | 8,519     | 3,374,180   | 1,387        | 560,996          |         |
|             | Non-Competing |            |           |             | 3,692        | 1,531,733        |         |
|             | Total         |            |           |             | <b>5,079</b> | <b>2,092,729</b> |         |

Includes Small Business Innovation Research and Small Business Technology Transfer Awards.

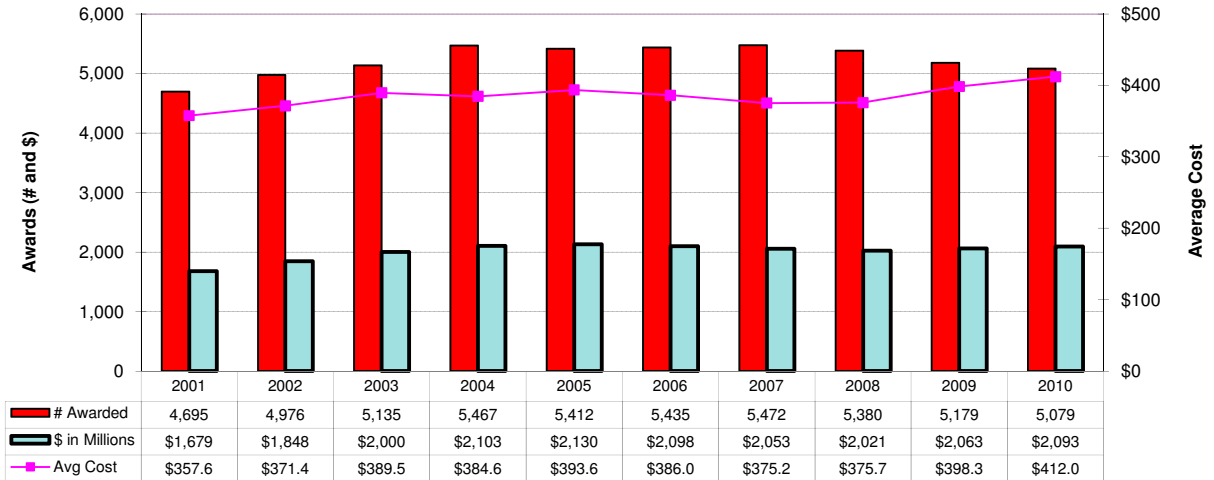
Success rate is the number of awarded grants divided by the number of awards requested.

Totals exclude Assessments for Program Evaluation and projects awarded with Stamp Out Breast Cancer Funds.

**RPG Awards by Activity Codes**  
**Fiscal Years 2001-2010**

(Dollars in Thousands; Activity Code Descriptions on next page)

|      |    | R01       | DP1   | DP2   | P01     | R00    | R35   | R37    | R29    | RFA     | U01    | U19   | R03    | R21    | R33    | R15   | R55 | R56 | SBIR/<br>STTR | TOTAL     |
|------|----|-----------|-------|-------|---------|--------|-------|--------|--------|---------|--------|-------|--------|--------|--------|-------|-----|-----|---------------|-----------|
| 2001 | #  | 3,231     |       |       | 178     |        | 1     | 61     | 210    | 260     | 18     |       | 122    | 231    | 49     | 3     | 3   |     | 328           | 4,695     |
|      | \$ | 1,008,199 |       |       | 301,115 |        | 2,186 | 26,682 | 23,738 | 150,224 | 14,873 |       | 9,024  | 42,326 | 23,883 | 358   | 300 |     | 75,833        | 1,678,741 |
| 2002 | #  | 3,376     |       |       | 173     |        |       | 65     | 112    | 267     | 17     |       | 186    | 308    | 79     | 10    | 9   |     | 374           | 4,976     |
|      | \$ | 1,093,908 |       |       | 317,632 |        |       | 29,445 | 12,471 | 177,195 | 17,531 |       | 14,115 | 57,633 | 39,317 | 1,477 | 850 |     | 86,367        | 1,847,941 |
| 2003 | #  | 3,573     |       |       | 178     |        |       | 70     | 14     | 252     | 27     |       | 203    | 360    | 81     | 21    |     |     | 356           | 5,135     |
|      | \$ | 1,207,387 |       |       | 336,607 |        |       | 35,360 | 1,584  | 173,342 | 31,126 |       | 15,207 | 67,742 | 37,714 | 3,086 |     |     | 90,857        | 2,000,012 |
| 2004 | #  | 3,780     |       |       | 177     |        |       | 73     | 0      | 233     | 26     |       | 240    | 425    | 96     | 20    |     |     | 397           | 5,467     |
|      | \$ | 1,277,185 |       |       | 344,489 |        |       | 37,888 | 53     | 168,539 | 31,377 |       | 18,067 | 77,970 | 42,931 | 4,560 |     |     | 99,579        | 2,102,638 |
| 2005 | #  | 3,848     |       |       | 176     |        |       | 74     |        | 254     | 30     | 1     | 223    | 430    | 88     | 20    | 2   | 1   | 265           | 5,412     |
|      | \$ | 1,312,762 |       |       | 338,660 |        |       | 40,007 |        | 171,403 | 34,100 | 1,049 | 16,894 | 76,566 | 36,250 | 4,091 | 200 | 407 | 97,775        | 2,130,164 |
| 2006 | #  | 3,909     |       |       | 173     |        |       | 76     |        | 273     | 26     | 3     | 218    | 405    | 73     | 14    |     | 2   | 263           | 5,435     |
|      | \$ | 1,293,880 |       |       | 339,616 |        |       | 40,067 |        | 173,304 | 31,292 | 4,365 | 16,558 | 70,650 | 28,726 | 2,983 |     | 649 | 96,055        | 2,098,145 |
| 2007 | #  | 3,849     |       |       | 172     |        |       | 73     |        | 285     | 22     | 3     | 284    | 437    | 48     | 19    |     | 2   | 278           | 5,472     |
|      | \$ | 1,266,622 |       |       | 326,968 |        |       | 38,232 |        | 177,423 | 24,295 | 4,212 | 21,640 | 78,748 | 16,739 | 4,042 |     | 495 | 93,677        | 2,053,093 |
| 2008 | #  | 3,732     | 2     |       | 158     | 2      |       | 70     |        | 294     | 25     | 3     | 256    | 466    | 36     | 22    |     | 2   | 312           | 5,380     |
|      | \$ | 1,250,346 | 1,651 |       | 305,250 | 497    |       | 36,287 |        | 174,254 | 20,872 | 4,366 | 19,597 | 92,120 | 13,770 | 4,725 |     | 302 | 97,439        | 2,021,476 |
| 2009 | #  | 3,573     | 3     |       | 151     | 29     |       | 63     |        | 326     | 32     | 2     | 239    | 447    | 25     | 27    | 1   |     | 261           | 5,179     |
|      | \$ | 1,248,939 | 3,313 |       | 302,270 | 7,186  |       | 32,640 |        | 218,798 | 31,320 | 1,584 | 18,401 | 91,537 | 9,094  | 5,823 | 100 | 79  | 91,954        | 2,063,038 |
| 2010 | #  | 3,655     | 5     | 1     | 140     | 55     |       | 61     |        | 275     | 43     | 1     | 181    | 415    | 16     | 24    |     |     | 207           | 5,079     |
|      | \$ | 1,323,673 | 6,021 | 2,512 | 280,531 | 13,665 |       | 31,498 |        | 200,424 | 36,209 | 1,252 | 14,195 | 83,950 | 5,583  | 7,539 |     | 8   | 85,669        | 2,092,729 |



\*EXCLUDES projects awarded with the Stamp Out Breast Cancer Funds and Program Evaluation.

## Activity Code Descriptions

|     |   |
|-----|---|
| R01 | <b>Research Project (Traditional)</b> - discrete, specified, circumscribed project to be performed by the named investigator(s) in an area representing his/her specified interest and competencies.  |
| DP1 | <b>NIH Director's Pioneer Award (NDPA)</b> - Support for individuals who have the potential to make extraordinary contributions to medical research. Not renewable  |
| DP2 | <b>NIH Director's New Innovator Awards</b> support exceptionally creative new investigators who propose highly innovative projects that have the potential for unusually high impact. This award complements ongoing efforts by NIH and its institutes and centers to fund new investigators through R01 grants and other mechanisms.   |
| P01 | <b>Research Program Projects</b> - broadly based, multidisciplinary, often long-term, research program which has a specific major objective or a basic theme. A program project is directed toward a range of problems having a central research focus in contrast to the usually narrower thrust of the traditional research project.  |
| R00 | <b>Research Transition Award</b> - To support the second phase of a Career/Research Transit award program that provides 1-3 years of independent research support (R00) contingent on securing an independent research position. Award recipients will be expected to contract successfully for independent R01 support from the NIH during the R00 research transition award period.   |
| R35 | <b>Outstanding Investigator Grants</b> - long-term support to an experienced investigator with an outstanding record of research productivity. This support is intended to encourage investigators to embark on long-term projects of unusual potential in a categorical program area.  |
| R37 | <b>Methods to Extend Research in Time (MERIT) Award</b> - long-term grant support to investigators whose research competence and productivity are distinctly superior and who are highly likely to continue to perform in an outstanding manner. Investigators may not apply for a MERIT award. Program staff and/or members of the cognizant National Advisory Council/Board will identify candidates for the MERIT award during the course of review of competing research grant applications prepared and submitted in accordance with regular PHS requirements. |
| R29 | <b>First Independent Research Support and Transition (FIRST) Award</b> - sufficient initial period of research support for newly independent biomedical investigators to develop their research capabilities and demonstrate the merit of their research ideas.   |
| RFA | <b>Request for Applications</b> - A formal statement inviting grant or cooperative agreement applications in a well-defined scientific area to accomplish specific program purposes and indicates the amount of funds set aside for the competition and/or the estimated number of awards to be made.   |
| U01 | <b>Research Project Cooperative Agreement</b> - discrete, specified, circumscribed project to be performed by the named investigator(s) in an area representing his/her specific interest and competencies.   |
| U19 | <b>Research Program Cooperative Agreements</b> - support research programs that have multiple projects directed towards specific major objective, basic theme, or program goal, requiring a broad-based, multidisciplinary, and often long-term, approach.  |
| R03 | <b>Small Grants</b> - research support specifically limited in time and amount for studies in categorical program areas. Small grants provide flexibility for initiating studies, which are generally for preliminary short-term projects and are non-renewable.  |
| R15 | <b>Academic Research Enhancement Award (AREA)</b> - to domestic health professional schools and other institutions offering baccalaureate or advanced degrees in health sciences, except those that have received NIH research grants and/or cooperative agreements. Supports feasibility studies and other small-scale research projects.  |
| R21 | <b>Exploratory/Developmental Grants</b> - Phase I development of new research activities in categorical program areas. Support generally is restricted in level of support and in time.   |
| R33 | <b>Exploratory/Developmental Grants</b> - Phase II development of new research activities in categorical program areas. Support generally is restricted in level of support and in time.  |
| R55 | <b>Shannon Awards</b> - limited support to scientists whose research applications fall short of the cutoff for funding yet are at the "margin of excellence" whereby the perceived quality of the grant is statistically indistinguishable from grants that are funded.   |
| R56 | <b>High-Priority, Short-Term Project Award</b> - provide limited, non-renewable interim support to enable an applicant to gather additional data for revision of a new or competing renewal application.  |
| R41 | <b>Small Business Technology Transfer (STTR) Grants - Phase I</b> - limited support to projects conducted jointly by a small business concern and a research institution in which not less than 40% of the work is performed by the small business.   |
| R42 | <b>Small Business Technology Transfer (STTR) Grants - Phase II</b> - limited support to projects conducted jointly by a small business concern and a research institution in which not less than 40% of the work is performed by the small business.  |
| R43 | <b>Small Business Innovation Research (SBIR) Grants - Phase I</b> - projects limited in time and amount, to establish the technical merit and feasibility of R&D ideas which may ultimately lead to commercial products or services.  |
| R44 | <b>Small Business Innovation Research (SBIR) Grants - Phase II</b> - in-depth development of R&D ideas whose feasibility has been established in Phase I and which are likely to result in commercial products or services.   |
| U43 | <b>Small Business Innovation Research (SBIR) Cooperative Agreement - Phase I</b> - utilized when an assistance relationship will exist between the institute and a recipient and in which substantial programmatic involvement is anticipated between the institute and the recipient during performance of the contemplated activity. Supports projects limited in time and amount to establish the technical merit and feasibility of R&D ideas which may ultimately lead to commercial products or services.   |
| U44 | <b>Small Business Innovation Research (SBIR) Cooperative Agreement - Phase II</b> - utilized when an assistance relationship will exist between the institute and a recipient and in which substantial programmatic involvement is anticipated between the institute and the recipient during performance of the contemplated activity. Supports in-depth development of R&D ideas whose feasibility has been established in Phase I and which are likely to result in commercial products or services.   |

### Cancer Centers by State (P30 Core Grants), Fiscal Year 2010

(Dollars in Thousands)

| State                       | Grantee Institution                                    | Code          | Count     | Amount         |
|-----------------------------|--|---------------|-----------|----------------|
| Alabama                     | University of Alabama at Birmingham                    | Comprehensive | 1         | \$6,189        |
| Arizona                     | University of Arizona                                  | Comprehensive | 1         | 4,362          |
| California                  | Burnham Institute for Medical Research                 | Basic         | 1         | 4,210          |
|                             | City of Hope/Beckman Research Institute                | Comprehensive | 1         | 2,520          |
|                             | Salk Institute for Biological Studies                  | Basic         | 1         | 3,090          |
|                             | Stanford University                                    | Clinical      | 1         | 3,580          |
|                             | University of California Davis                         | Clinical      | 1         | 3,094          |
|                             | University of California Irvine                        | Comprehensive | 1         | 1,405          |
|                             | University of California Los Angeles                   | Comprehensive | 1         | 5,516          |
|                             | University of California San Diego                     | Comprehensive | 1         | 4,756          |
|                             | University of California San Francisco                 | Comprehensive | 1         | 7,761          |
|                             | University of Southern California                      | Comprehensive | 1         | 6,737          |
| Colorado                    | University of Colorado Denver                          | Comprehensive | 1         | 4,456          |
| Connecticut                 | Yale University  | Comprehensive | 1         | 2,088          |
| Dist of Col                 | Georgetown University                                  | Comprehensive | 1         | 1,727          |
| Florida                     | H. Lee Moffitt Cancer Center & Research Institute      | Comprehensive | 1         | 3,162          |
| Georgia                     | Emory University                                       | Clinical      | 1         | 1,694          |
| Hawaii                      | University of Hawaii at Manoa                          | Clinical      | 1         | 1,540          |
| Illinois                    | Northwestern University                                | Comprehensive | 1         | 5,147          |
|                             | University of Chicago                                  | Comprehensive | 1         | 4,569          |
| Indiana                     | Indiana Univ-Purdue Univ at Indianapolis               | Clinical      | 1         | 1,452          |
|                             | Purdue University West Lafayette                       | Basic         | 1         | 1,258          |
| Iowa                        | University of Iowa                                     | Comprehensive | 1         | 1,885          |
| Maine                       | Jackson Laboratory                                     | Basic         | 1         | 2,256          |
| Maryland                    | Johns Hopkins University                               | Comprehensive | 1         | 7,855          |
|                             | University of Maryland Baltimore                       | Clinical      | 1         | 1,555          |
| Massachusetts               | Dana-Farber Cancer Institute                           | Comprehensive | 1         | 11,888         |
|                             | Massachusetts Institute of Technology                  | Basic         | 1         | 4,057          |
| Michigan                    | University of Michigan at Ann Arbor                    | Comprehensive | 1         | 6,095          |
|                             | Wayne State University                                 | Comprehensive | 1         | 2,594          |
| Minnesota                   | Mayo Clinic Rochester                                  | Comprehensive | 1         | 6,017          |
|                             | University of Minnesota Twin Cities                    | Comprehensive | 1         | 3,811          |
| Missouri                    | Washington University                                  | Comprehensive | 1         | 4,761          |
| Nebraska                    | University of Nebraska Medical Center                  | Clinical      | 1         | 1,543          |
| New Hampshire               | Dartmouth College                                      | Comprehensive | 1         | 3,578          |
| New Jersey                  | Robert Wood Johnson Medical School                     | Comprehensive | 1         | 3,160          |
| New Mexico                  | University of New Mexico                               | Clinical      | 1         | 2,276          |
| New York                    | Albert Einstein College of Medicine Yeshiva University | Clinical      | 1         | 4,027          |
|                             | Cold Spring Harbor Laboratory                          | Basic         | 1         | 4,236          |
|                             | Columbia University Health Sciences                    | Comprehensive | 1         | 4,117          |
|                             | New York University School of Medicine                 | Clinical      | 1         | 2,644          |
|                             | Roswell Park Cancer Institute Corp                     | Comprehensive | 1         | 4,369          |
|                             | Sloan-Kettering Institute for Cancer Res               | Comprehensive | 1         | 14,379         |
| North Carolina              | Duke University  | Comprehensive | 1         | 6,307          |
|                             | University of North Carolina Chapel hill               | Comprehensive | 1         | 6,899          |
|                             | Wake Forest University Health Sciences                 | Comprehensive | 1         | 1,608          |
| Ohio                        | Case Western Reserve University                        | Comprehensive | 1         | 5,427          |
|                             | Ohio State University                                  | Comprehensive | 1         | 3,974          |
| Oregon                      | Oregon Health and Science University                   | Clinical      | 1         | 1,295          |
| Pennsylvania                | Fox Chase Cancer Center                                | Comprehensive | 1         | 8,491          |
|                             | Thomas Jefferson University                            | Clinical      | 1         | 3,202          |
|                             | University of Pennsylvania                             | Comprehensive | 1         | 7,214          |
|                             | University of Pittsburgh at Pittsburgh                 | Comprehensive | 1         | 5,510          |
|                             | Wistar Institute                                       | Basic         | 1         | 2,627          |
| South Carolina              | Medical University of South Carolina                   | Clinical      | 1         | 1,875          |
| Tennessee                   | St. Jude Children's Research Hospital                  | Comprehensive | 1         | 6,223          |
|                             | Vanderbilt University                                  | Comprehensive | 1         | 6,458          |
| Texas                       | Baylor College of Medicine                             | Clinical      | 1         | 3,440          |
|                             | University of Texas M.D. Anderson Cancer Center        | Comprehensive | 1         | 10,584         |
|                             | University of Texas San Antonio Health Science Center  | Clinical      | 1         | 1,469          |
|                             | University of Texas Southwestern Medical Center        | Clinical      | 1         | 1,600          |
| Utah                        | University of Utah                                     | Clinical      | 1         | 1,583          |
| Virginia                    | University of Virginia Charlottesville                 | Clinical      | 1         | 2,561          |
|                             | Virginia Commonwealth University                       | Clinical      | 1         | 1,025          |
| Washington                  | Fred Hutchinson Cancer Research Center                 | Comprehensive | 1         | 11,442         |
| Wisconsin                   | University of Wisconsin Madison                        | Comprehensive | 1         | 4,897          |
|                             | <b>Total P30s</b>                                      |               | <b>66</b> | <b>283,125</b> |
|                             | Planning Grants (P20s)                                 |               | 12        | 2,394          |
|                             | Other P20, P30 & U41                                   |               | 0         | 10,337         |
| <b>Total Cancer Centers</b> |  |               | <b>66</b> | <b>295,856</b> |

## Specialized Programs of Research Excellence, Fiscal Year 2010

(Dollars in Thousands)

In 1992, the NCI established the Specialized Programs of Research Excellence (SPORE). The Translational Research Program (TRP) is the home of the SPOREs — a cornerstone of NCI's efforts to promote collaborative, interdisciplinary translational cancer research. SPORE grants involve both basic and clinical/applied scientists, and support projects that will result in new and diverse approaches to the prevention, early detection, diagnosis and treatment of human cancers.

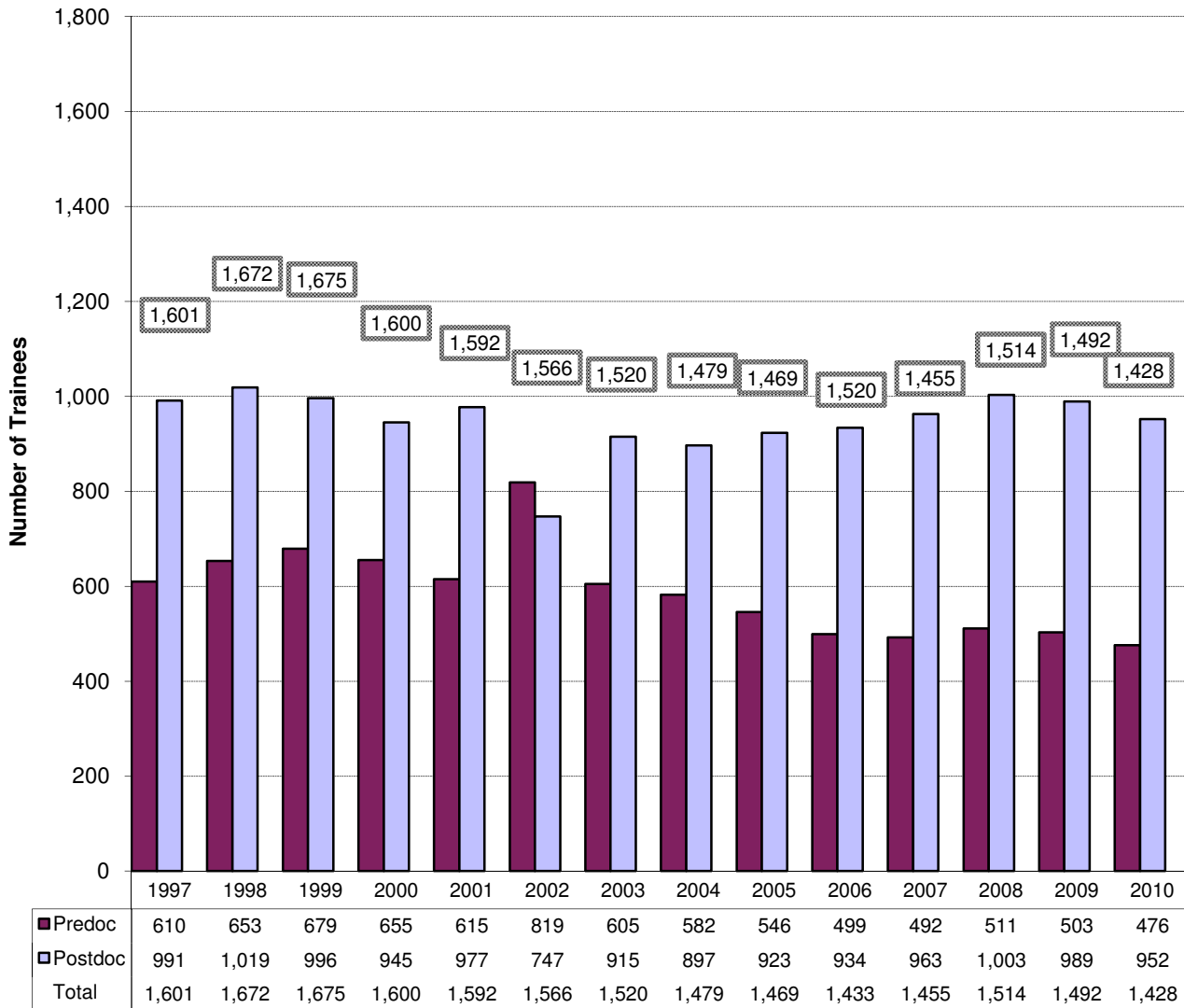
Each SPORE is focused on a specific organ site, such as breast or lung cancer, or on a group of highly related cancers, such as gastrointestinal cancers. SPOREs are designed to enable the rapid and efficient movement of basic scientific findings into clinical settings, as well as to determine the biological basis for observations made in individuals with cancer or in populations at risk for cancer. For more information, see <http://trp.cancer.gov>.

| Mechanism                                     | Site                   | No.              | Amount           |                |
|---|------------------------|------------------|------------------|----------------|
| P50 SPOREs                                    | Brain                  | 3                | \$5,053          |                |
|   | Breast                 | 9                | 18,637           |                |
|   | Cervical               | 1                | 2,300            |                |
|   | Endometrial            | 1                | 500              |                |
|   | Genitourinary          | 1                | 2,233            |                |
|   | Gastrointestinal       | 6                | 12,543           |                |
|   | Head and Neck          | 4                | 8,593            |                |
|   | Kidney                 | 1                | 2,300            |                |
|   | Leukemia               | 2                | 4,458            |                |
|   | Lung                   | 7                | 15,645           |                |
|   | Lymphoma               | 4                | 7,659            |                |
|   | Myeloma                | 2                | 4,600            |                |
|   | Ovarian                | 5                | 9,632            |                |
|   | Pancreatic             | 2                | 4,600            |                |
|   | Prostate               | 9                | 20,636           |                |
|   | Sarcoma                | 1                | 2,300            |                |
|   | Skin                   | 4                | 9,133            |                |
|   | Uterine                | 1                | 2,300            |                |
|   |                        | <b>Subtotal</b>  | <b>63</b>        | <b>133,122</b> |
|   | P20                    | Gastrointestinal |                  | 488            |
| <b>Total P20</b>                              |                        |                  | <b>488</b>       |                |
| Co-funded                                     | Head & Neck with NIDCR |                  | 200              |                |
|   | <b>Total Co-funded</b> |                  | <b>200</b>       |                |
| <b>Total NCI SPOREs and NCI SPORE Funding</b> |                        | <b>63</b>        | <b>\$133,810</b> |                |

# NRSA Predoctoral and Postdoctoral Trainees

## Fiscal Years 1997-2010

(Full Time Trainee Positions)

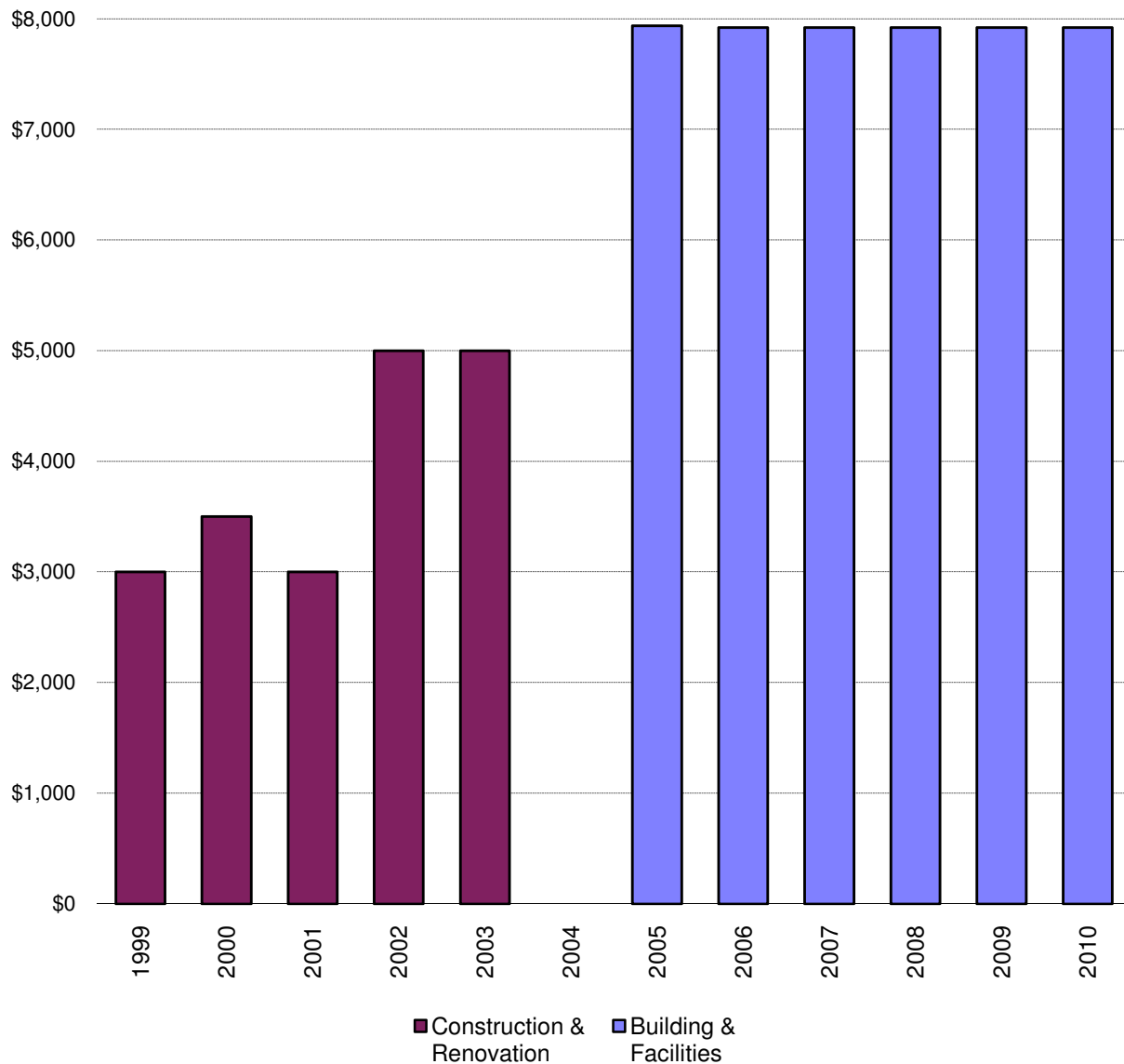


# Construction/Renovation Funding and Building & Facilities Funding Fiscal Years 1999 - 2010

*(Dollars in Thousands)*

---

Construction/Renovation grants and contracts were used by grantees to build infrastructure. The grants (C06s) provide matching Federal funds for up to 50% of allowable costs for construction or major remodeling to create new facilities for cancer research. Although the NCI has the authority to fund Construction grants, Congress has not appropriated funds to this program for NCI since FY 2003. In FY 2005, NCI began to receive Building & Facilities funding to use specifically for repairs and improvements at the NCI - Frederick facility.





## Grant and Contract Awards by State Fiscal Year 2010

(Dollars in Thousands)

| State                | Grants       |                  | Contracts  |                | Total        |                  |
|----------------------|--------------|------------------|------------|----------------|--------------|------------------|
|                      | No           | Amount           | No         | Amount         | No           | Amount           |
| Alabama              | 64           | \$33,627         | 4          | \$4,156        | 68           | \$37,783         |
| Arizona              | 64           | 29,250           | 3          | 600            | 67           | 29,850           |
| Arkansas             | 24           | 9,542            | 1          | 150            | 25           | 9,692            |
| California           | 841          | 465,027          | 34         | 24,636         | 875          | 489,663          |
| Colorado             | 84           | 28,974           | 2          | 1,714          | 86           | 30,688           |
| Connecticut          | 89           | 37,736           | 1          | 2,479          | 90           | 40,215           |
| Delaware             | 2            | 1,281            |            |                | 2            | 1,281            |
| District of Columbia | 66           | 28,770           | 17         | 9,988          | 83           | 38,758           |
| Florida              | 171          | 66,665           | 3          | 1,939          | 174          | 68,604           |
| Georgia              | 100          | 34,482           | 11         | 6,263          | 111          | 40,745           |
| Hawaii               | 19           | 15,454           | 2          | 3,882          | 21           | 19,336           |
| Idaho                | 1            | 212              |            |                | 1            | 212              |
| Illinois             | 255          | 103,315          | 6          | 5,031          | 261          | 108,346          |
| Indiana              | 71           | 23,876           | 1          | 200            | 72           | 24,076           |
| Iowa                 | 42           | 15,578           | 2          | 4,602          | 44           | 20,180           |
| Kansas               | 20           | 8,433            | 2          | 1,150          | 22           | 9,582            |
| Kentucky             | 62           | 17,424           | 1          | 1,355          | 63           | 18,778           |
| Louisiana            | 38           | 10,676           | 2          | 1,935          | 40           | 12,611           |
| Maine                | 5            | 3,554            |            |                | 5            | 3,554            |
| Maryland             | 231          | 123,899          | 68         | 352,705        | 299          | 476,603          |
| Massachusetts        | 635          | 385,943          | 17         | 6,782          | 652          | 392,725          |
| Michigan             | 207          | 121,077          | 5          | 8,143          | 212          | 129,221          |
| Minnesota            | 192          | 101,279          | 6          | 3,939          | 198          | 105,218          |
| Mississippi          | 5            | 1,589            |            |                | 5            | 1,589            |
| Missouri             | 106          | 48,093           | 7          | 4,509          | 113          | 52,601           |
| Montana              | 4            | 1,278            | 1          | 199            | 5            | 1,477            |
| Nebraska             | 40           | 15,447           |            |                | 40           | 15,447           |
| Nevada               | 7            | 1,979            |            |                | 7            | 1,979            |
| New Hampshire        | 50           | 23,010           | 2          | 1,446          | 52           | 24,456           |
| New Jersey           | 85           | 29,370           | 4          | 4,997          | 89           | 34,367           |
| New Mexico           | 26           | 13,091           | 1          | 2,253          | 27           | 15,344           |
| New York             | 581          | 285,121          | 9          | 7,662          | 590          | 292,782          |
| North Carolina       | 260          | 127,780          | 8          | 1,949          | 268          | 129,729          |
| North Dakota         | 4            | 1,155            |            |                | 4            | 1,155            |
| Ohio                 | 230          | 96,745           | 9          | 7,913          | 239          | 104,658          |
| Oklahoma             | 12           | 3,666            | 1          | 130            | 13           | 3,796            |
| Oregon               | 43           | 16,179           |            |                | 43           | 16,179           |
| Pennsylvania         | 424          | 203,730          | 7          | 4,115          | 431          | 207,845          |
| Rhode Island         | 40           | 14,087           |            | 66             | 40           | 14,153           |
| South Carolina       | 47           | 15,967           |            |                | 47           | 15,967           |
| South Dakota         | 3            | 2,323            |            |                | 3            | 2,323            |
| Tennessee            | 202          | 106,004          | 1          | 200            | 203          | 106,204          |
| Texas                | 520          | 241,149          | 9          | 1,442          | 529          | 242,590          |
| Utah                 | 54           | 22,668           | 2          | 2,861          | 56           | 25,530           |
| Vermont              | 5            | 2,964            |            |                | 5            | 2,964            |
| Virginia             | 97           | 59,635           | 13         | 28,816         | 110          | 88,451           |
| Washington           | 217          | 134,733          | 3          | 11,156         | 220          | 145,889          |
| West Virginia        | 14           | 3,698            |            |                | 14           | 3,698            |
| Wisconsin            | 113          | 49,672           | 2          | 1,865          | 115          | 51,536           |
| Wyoming              | 1            | 72               |            |                | 1            | 72               |
| <b>Subtotal</b>      | <b>6,473</b> | <b>3,187,274</b> | <b>267</b> | <b>523,228</b> | <b>6,740</b> | <b>3,710,502</b> |
| Guam                 | 1            | 1,631            |            |                | 1            | 1,631            |
| Puerto Rico          | 5            | 3,069            |            |                | 5            | 3,069            |
| <b>Total</b>         | <b>6,479</b> | <b>3,191,974</b> | <b>267</b> | <b>523,228</b> | <b>6,746</b> | <b>3,715,202</b> |

Excludes STAMP, NRSA TAP, Loan Repayment Program, Foreign Contracts and Grants, Program Evaluation, and other assessments and miscellaneous expenses.

## Grant and Contract Awards by Country Fiscal Year 2010

*(Dollars in Thousands)*

| <u>Country</u>       | <u>Grant</u> |               | <u>Contract</u> |               | <u>Total</u> |               |
|----------------------|--------------|---------------|-----------------|---------------|--------------|---------------|
|                      | <u>No</u>    | <u>Amount</u> | <u>No</u>       | <u>Amount</u> | <u>No</u>    | <u>Amount</u> |
| Australia            | 6            | \$2,703       |                 |               | 6            | \$2,703       |
| Belgium              | 1            | 423           |                 |               | 1            | 423           |
| Brazil               | 0            | 27            |                 |               | 0            | 27            |
| Canada               | 25           | 10,075        | 2               | \$1,044       | 27           | 11,119        |
| Costa Rica           |              |               | 1               | 4,395         | 1            | 4,395         |
| Finland              |              |               | 1               | 391           | 1            | 391           |
| France               | 2            | 1,540         |                 |               | 2            | 1,540         |
| Germany              | 1            | 380           |                 |               | 1            | 380           |
| India                | 1            | 228           |                 |               | 1            | 228           |
| Ireland              | 1            | 201           |                 |               | 1            | 201           |
| Israel               | 6            | 1,200         |                 |               | 6            | 1,200         |
| Mexico               | 0            | 121           |                 |               | 0            | 121           |
| Spain                | 4            | 964           |                 |               | 4            | 964           |
| Sweden               | 1            | 386           |                 |               | 1            | 386           |
| Switzerland          | 2            | 659           |                 |               | 2            | 659           |
| Turkey               | 0            | 26            |                 |               | 0            | 26            |
| United Kingdom       | 6            | 1,685         |                 |               | 6            | 1,685         |
| <b>Total Foreign</b> | <b>56</b>    | <b>20,619</b> | <b>4</b>        | <b>5,830</b>  | <b>60</b>    | <b>26,448</b> |

Excludes STAMP, NRSA TAP, Loan Repayment Program, Program Evaluation, and other assessments and miscellaneous expenses.

## Institutions Receiving More than \$15 Million in NCI Support, FY 2010

(Dollars in Thousands)

| State  | Institution  | Grants             | Contracts        | Total NCI          |
|--|--|--------------------|------------------|--------------------|
| Alabama  | University of Alabama at Birmingham                      | \$27,880           | \$1,316          | \$29,196           |
| Arizona  | University of Arizona                                    | 21,305             | 75               | 21,380             |
| California   | Burnham Institute for Medical Research                   | 17,820             |                  | 17,820             |
|  | City of Hope's Beckman Research Institute                | 23,403             |                  | 23,403             |
|  | National Childhood Cancer Foundation                     | 41,382             |                  | 41,382             |
|  | Stanford University                                      | 57,975             |                  | 57,975             |
|  | University of California System                          | 181,082            | 1,477            | 182,559            |
|  | University of Southern California                        | 42,029             | 3,652            | 45,681             |
| Colorado   | University of Colorado Health Sciences Center            | 20,159             | 1,564            | 21,723             |
| Connecticut  | Yale University  | 35,186             |                  | 35,186             |
| District of Columbia                                 | Georgetown University                                    | 22,637             | 3,397            | 26,034             |
| Florida  | H. Lee Moffitt Cancer Center & Research Institute        | 36,667             | 1,248            | 37,915             |
| Georgia  | Emory University   | 21,652             | 2,289            | 23,941             |
| Hawaii   | University of Hawaii                                     | 14,029             | 1,381            | 15,410             |
| Illinois   | Northwestern University                                  | 29,435             |                  | 29,435             |
|  | University of Chicago                                    | 32,508             | 474              | 32,982             |
|  | University of Illinois at Chicago                        | 19,670             |                  | 19,670             |
| Iowa   | University of Iowa                                       | 13,937             | 4,602            | 18,539             |
| Maryland   | The Johns Hopkins University                             | 85,678             |                  | 85,678             |
|  | SAIC-Frederick, Inc.                                     |                    | 220,348          | 220,348            |
|  | Westat, Inc.   |                    | 38,979           | 38,979             |
| Massachusetts  | Beth Israel Deaconess Medical Center                     | 22,761             |                  | 22,761             |
|  | Brigham and Women's Hospital                             | 62,520             |                  | 62,520             |
|  | Dana-Farber Cancer Institute                             | 86,901             |                  | 86,901             |
|  | Frontier Science & Tech Research Foundation              | 15,828             |                  | 15,828             |
|  | Harvard University                                       | 31,573             |                  | 31,573             |
|  | Massachusetts General Hospital                           | 42,980             | 1,800            | 44,780             |
|  | Massachusetts Institute of Technology                    | 30,145             |                  | 30,145             |
| University of Massachusetts Medical School Worcester | 20,057   | 50                 | 20,107           |                    |
| Michigan   | University of Michigan at Ann Arbor                      | 88,301             |                  | 88,301             |
|  | Wayne State University                                   | 17,042             | 4,962            | 22,003             |
| Minnesota  | Mayo Clinic in Rochester                                 | 61,425             | 817              | 62,242             |
|  | University of Minnesota                                  | 36,139             | 2,963            | 39,102             |
| Missouri   | Washington University                                    | 41,628             | 1,351            | 42,979             |
| New Hampshire  | Dartmouth College  | 21,914             | 247              | 22,161             |
| New York   | Columbia University Health Sciences                      | 26,794             |                  | 26,794             |
|  | Mount Sinai School of Medicine                           | 17,807             |                  | 17,807             |
|  | New York University                                      | 16,922             |                  | 16,922             |
|  | Roswell Park Cancer Institute Corporation                | 33,924             |                  | 33,924             |
|  | Sloan-Kettering Institute for Cancer Research            | 79,641             | 2,092            | 81,732             |
|  | University of Rochester                                  | 16,694             |                  | 16,694             |
| Yeshiva University                                   | 27,270   |                    | 27,270           |                    |
| North Carolina                                       | Duke University  | 45,626             | 24               | 45,650             |
|  | University of North Carolina at Chapel Hill              | 51,350             |                  | 51,350             |
|  | Wake Forest University Health Sciences                   | 15,834             |                  | 15,834             |
| Ohio   | Case Western Reserve University                          | 20,300             |                  | 20,300             |
|  | Ohio State University                                    | 48,108             | 267              | 48,375             |
| Pennsylvania   | Fox Chase Cancer Center                                  | 20,372             | 1,016            | 21,388             |
|  | University of Pennsylvania                               | 53,806             | 1,459            | 55,265             |
|  | University of Pittsburgh                                 | 52,190             |                  | 52,190             |
| Tennessee  | St. Jude Children's Research Hospital                    | 26,085             |                  | 26,085             |
|  | Vanderbilt University                                    | 69,896             |                  | 69,896             |
| Texas  | Baylor College of Medicine                               | 34,479             |                  | 34,479             |
|  | University of Texas Health Science Center at San Antonio | 16,042             |                  | 16,042             |
|  | University of Texas, MD Anderson Cancer Center           | 126,632            | 222              | 126,855            |
|  | University of Texas, SW Medical Center at Dallas         | 20,187             |                  | 20,187             |
| Utah   | University of Utah                                       | 20,885             | 2,861            | 23,747             |
| Virginia   | American College of Radiology                            | 29,148             |                  | 29,148             |
|  | University of Virginia at Charlottesville                | 14,098             |                  | 14,098             |
| Washington   | Fred Hutchinson Cancer Research Center                   | 87,892             | 10,995           | 98,887             |
|  | University of Washington                                 | 30,460             |                  | 30,460             |
| Wisconsin  | University of Wisconsin                                  | 33,175             |                  | 33,175             |
|  | <b>Total</b>   | <b>\$2,359,263</b> | <b>\$311,929</b> | <b>\$2,671,192</b> |

Includes Manpower Development Grants



## Appropriations of the NCI 1938-2010

(In Whole Dollars)

| Year               | Amount                  | Description   |
|--------------------|-------------------------|---|
| <b>1938 - 1999</b> | <b>\$41,661,018,220</b> |   |
| 2000.....          | 3,332,317,000           | prior to reductions in PL 106-113 (-\$17,763,000 for across the board reduction). Includes \$245,804,000 of AIDS funding.   |
| 2001.....          | 3,757,242,000           | prior to reductions in PL 106-554(-\$2,005,000 for across-the-board reduction). Includes -\$711,000 Secretary's 1% transfer, -\$781,000 transfer for Office of Human Research Protection and -\$24,000 lapse. Includes \$255,960,000 of AIDS funding. |
| 2002.....          | 4,190,405,000           | prior to reductions in PL 107-116(-\$4,524,000 via the Secretary's 1% transfer authority, -\$2,054,000 for the enacted rescission, -\$7,118,000 administrative reduction and -\$8,000 lapse). Includes \$254,396,000 of AIDS funding.                 |
| 2003.....          | 4,622,394,000           | prior to reductions in PL 108-7(-\$30,046,000 for the enacted rescission and -\$2,000 lapse). Includes \$263,442,000 of AIDS funding.   |
| 2004.....          | 4,770,519,000           | prior to reductions in PL 108-199(-\$3,136,000 for Labor/HHS/ED rescission; \$28,128,000 for across the board reduction; -\$15,357,000 NIH 1% transfer assessment, and \$5,000 lapse). Includes \$266,975,000   |
| 2005.....          | 4,865,525,000           | prior to reductions in PL 108-447(\$38,914,000 .8% across the board reduction; -\$1,353,000 for Labor/HHS/ED rescission; -\$30,505,000 NIH 1% transfer assessment, and \$9,000 lapse). Includes \$265,907,000 of                                      |
| 2006.....          | 4,841,774,000           | prior to reductions in PL 109-149 (-\$48,418,000 for Labor/HHS/ED rescission; -\$3,293,000 HHS transfer for CMS activities; -\$42,834,000 NIH 1% transfer for roadmap activities, and \$4,000 lapse). Includes \$253,866,000 of AIDS funding.         |
| 2007.....          | 4,797,639,000           | prior to reductions in PL 110-5 (-\$5,015,000 NIH transfer for GEI activities, and \$9,000 lapse). Includes \$253,866,000 of AIDS funding.  |
| 2008.....          | 4,827,556,000           | Includes supplemental appropriation of \$25,559,000. Includes \$258,499,000 of AIDS funding.  |
| 2009.....          | 4,968,973,000           | prior to reductions in PL 111-8 (-\$2,042,631 NIH transfer for activities, and \$4000 lapse). Includes \$265,882,000 of AIDS funding.   |
| 2010.....          | 5,103,388,000           | prior to -\$760,000 HHS Secretary's transfer ,-\$4,459,000 in NIH transfer for activities, and \$22,000 lapse. Includes \$272,130,000 of AIDS funding.  |
| <b>1938-2010</b>   | <b>91,738,750,220</b>   |   |

## Bypass Budget Requests Fiscal Years 1974-2012

*(in Whole Dollars)*

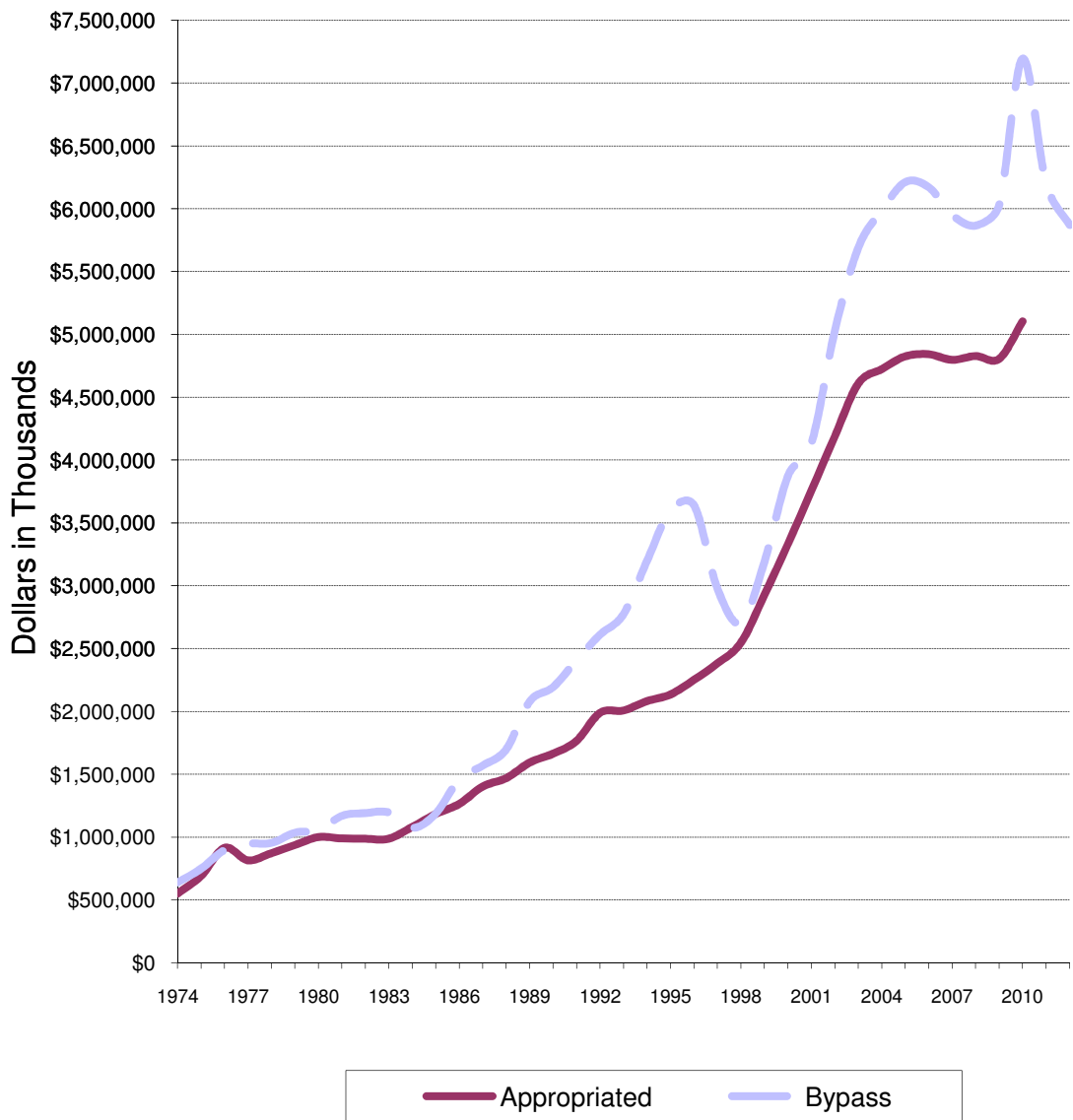
---

| <b>Fiscal<br/>Year</b> | <b>Request</b> |
|------------------------|----------------|
| 1974.....              | 640,031,000    |
| 1975.....              | 750,000,000    |
| 1976.....              | 898,500,000    |
| 1977.....              | 948,000,000    |
| 1978.....              | 955,000,000    |
| 1979.....              | 1,036,000,000  |
| 1980.....              | 1,055,000,000  |
| 1981.....              | 1,170,000,000  |
| 1982.....              | 1,192,000,000  |
| 1983.....              | 1,197,000,000  |
| 1984.....              | 1,074,000,000  |
| 1985.....              | 1,189,000,000  |
| 1986.....              | 1,460,000,000  |
| 1987.....              | 1,570,000,000  |
| 1988.....              | 1,700,000,000  |
| 1989.....              | 2,080,000,000  |
| 1990.....              | 2,195,000,000  |
| 1991.....              | 2,410,000,000  |
| 1992.....              | 2,612,000,000  |
| 1993.....              | 2,775,000,000  |
| 1994.....              | 3,200,000,000  |
| 1995.....              | 3,600,000,000  |
| 1996.....              | 3,640,000,000  |
| 1997.....              | 2,977,000,000  |
| 1998.....              | 2,702,500,000  |
| 1999.....              | 3,191,000,000  |
| 2000.....              | 3,873,000,000  |
| 2001.....              | 4,135,000,000  |
| 2002.....              | 5,030,000,000  |
| 2003.....              | 5,690,000,000  |
| 2004.....              | 5,986,000,000  |
| 2005.....              | 6,211,000,000  |
| 2006.....              | 6,170,000,000  |
| 2007.....              | 5,949,714,000  |
| 2008.....              | 5,865,788,000  |
| 2009.....              | 6,028,386,000  |
| 2010.....              | 7,193,393,000  |
| 2011.....              | 6,199,666,000  |
| 2012.....              | 5,869,857,000  |

The National Cancer Act in December 1971, included a provision for the Director, NCI to submit an annual budget request directly to the President, with comment only by NIH and DHHS. This Bypass Budget was first submitted for 1973.

## Bypass Requests and Appropriations of the NCI Fiscal Years 1974-2012

---



\* This represents the funding available to NCI under the FY 2011 continuing resolution.

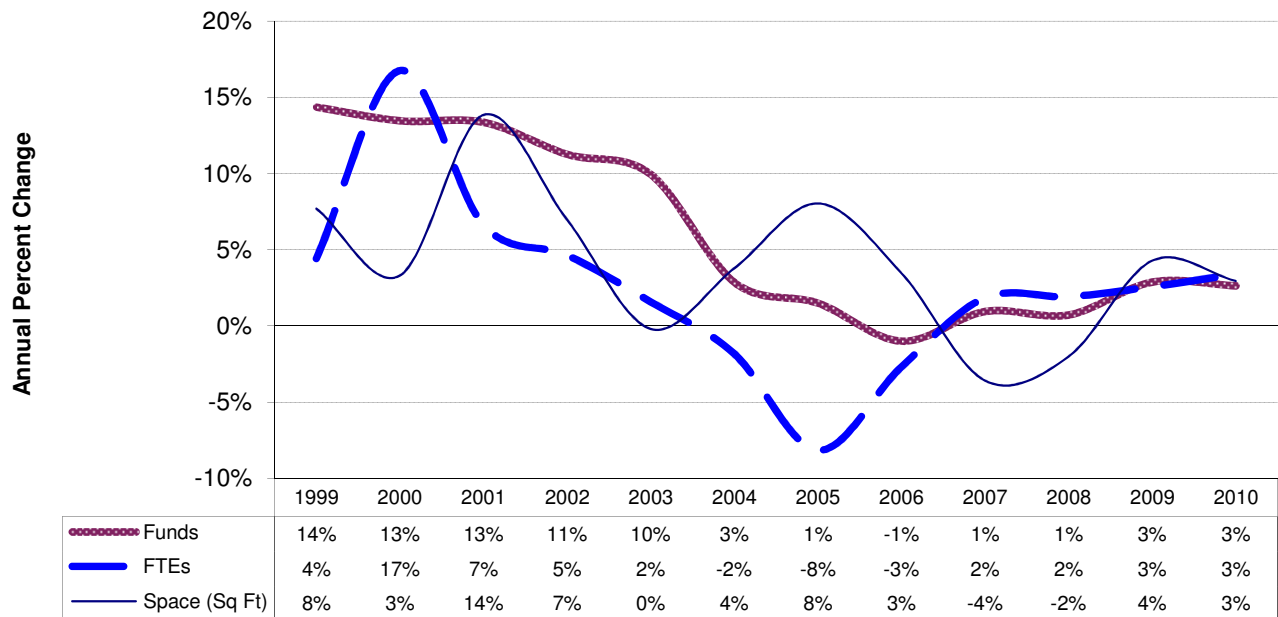
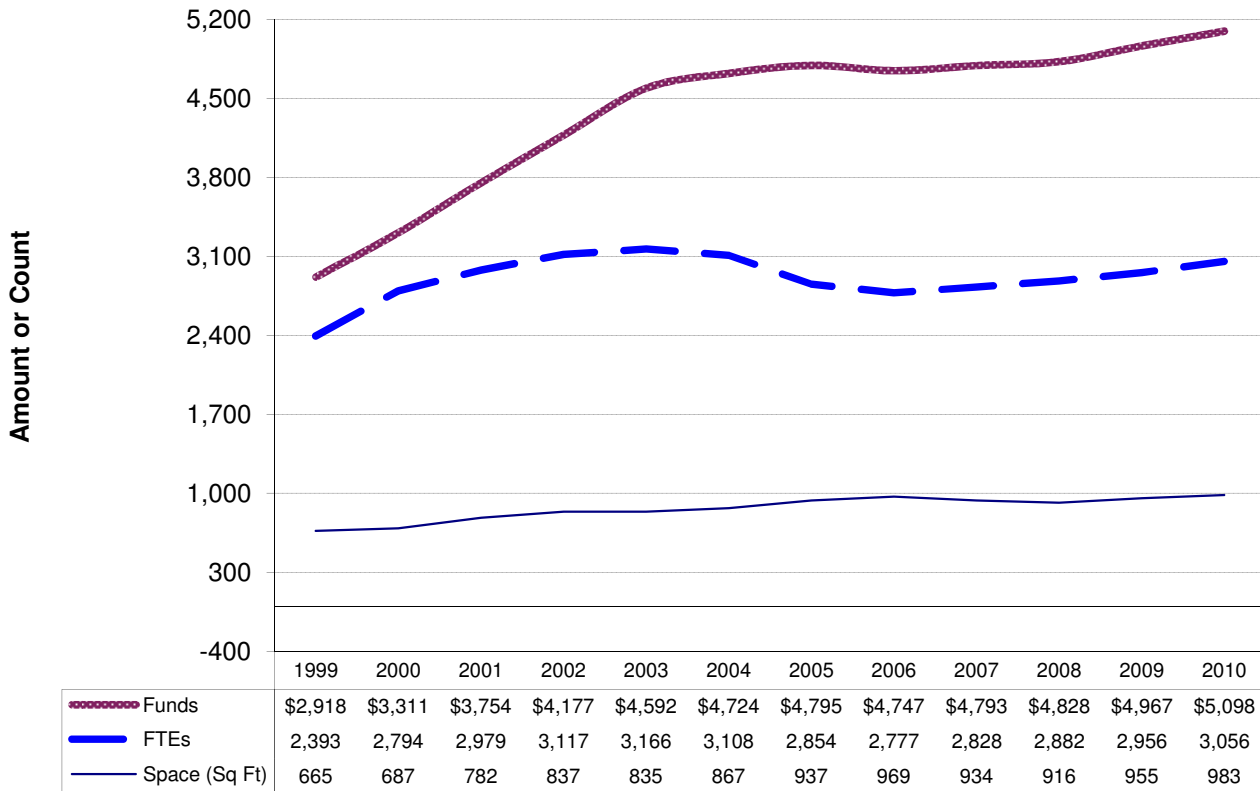
# Comparison of Dollars, Positions, and Space Fiscal Years 1999-2010

Funds are obligations against the annual appropriation in millions of dollars.

FTEs are the number of workyears for appointed employees of the NCI. A workyear equals 2,080 hours.

The increase in FTEs in FY 2000 is due to the fact that 195 contract staff were converted to NCI appointments.

Space is in thousands of square feet, excluding NCI-Frederick.





**Personal Resources**  
**Fiscal Years 1999-2010**

---

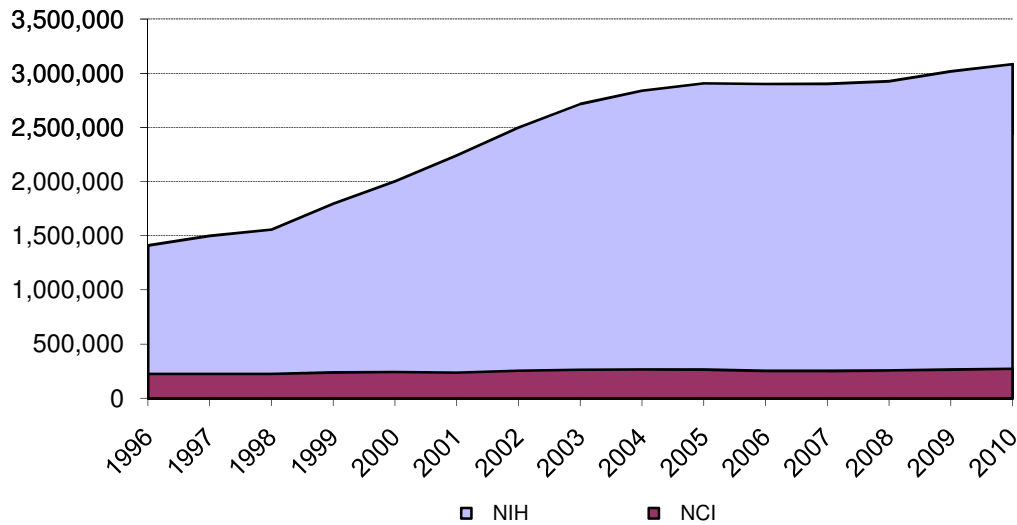
| Fiscal Year | Full Time Permanent Appointment | Other than Full Time Permanent | Training Fellows | Total Personnel Resources |
|-------------|---------------------------------|--------------------------------|------------------|---------------------------|
| 1999        | 1,941                           | 628                            | 1,060            | 3,629                     |
| 2000        | 2,139                           | 831                            | 1,202            | 4,172                     |
| 2001        | 2,224                           | 912                            | 963              | 4,099                     |
| 2002        | 2,250                           | 979                            | 949              | 4,178                     |
| 2003        | 2,193                           | 1,073                          | 1,191            | 4,457                     |
| 2004        | 2,083                           | 990                            | 1,232            | 4,305                     |
| 2005        | 1,959                           | 882                            | 1,077            | 3,918                     |
| 2006        | 2,579                           | 289                            | 1,113            | 3,981                     |
| 2007        | 2,421                           | 498                            | 1,111            | 4,030                     |
| 2008        | 2,075                           | 920                            | 1,016            | 4,011                     |
| 2009        | 2,118                           | 959                            | 1,058            | 4,135                     |
| 2010        | 2,148                           | 1,011                          | 1,073            | 4,232                     |

# AIDS Funding History

## Fiscal Years 1996 - 2010

---

| Fiscal Year | NCI     | NIH       | % NCI of NIH |
|-------------|---------|-----------|--------------|
| 1996        | 225,360 | 1,411,860 | 16%          |
| 1997        | 224,733 | 1,501,073 | 15%          |
| 1998        | 225,991 | 1,559,071 | 14%          |
| 1999        | 239,190 | 1,797,422 | 13%          |
| 2000        | 244,145 | 2,005,100 | 12%          |
| 2001        | 237,789 | 2,244,160 | 11%          |
| 2002        | 254,396 | 2,500,866 | 10%          |
| 2003        | 263,442 | 2,718,171 | 10%          |
| 2004        | 266,975 | 2,840,384 | 9%           |
| 2005        | 265,907 | 2,909,381 | 9%           |
| 2006        | 253,666 | 2,902,183 | 9%           |
| 2007        | 253,666 | 2,904,536 | 9%           |
| 2008        | 258,499 | 2,928,300 | 9%           |
| 2009        | 265,882 | 3,019,279 | 9%           |
| 2010        | 272,130 | 3,085,597 | 9%           |





NATIONAL<sup>®</sup>  
CANCER  
INSTITUTE

NIH Publication No. 11-7772  
Printed April 2011

