

News

United States
Department
of Labor



Bureau of Labor Statistics

Washington, D.C. 20212

Information: (202) 691-6275 WorkStoppagesInfo@bls.gov

USDL 08-0202

Media Contact: (202) 691-5902

For Release: 10:00 A.M. EST

Internet Address: <http://www.bls.gov/wsp>

Wednesday, February 13, 2008

MAJOR WORK STOPPAGES IN 2007

Major work stoppages idled 189,000 workers for 1.3 million workdays in 2007, the U.S. Department of Labor's Bureau of Labor Statistics reported today. In 2007, the largest major work stoppage in total days idle was between the Alliance of Motion Picture and Television Producers and the Writers Guild of America East and West, with 10,500 workers accounting for 409,500 lost workdays. The largest work stoppage in number of workers was between General Motors Corporation and the United Auto Workers, with 74,000 General Motors workers involved in the two day work stoppage.

There were 21 lockouts and strikes involving 1,000 or more workers in 2007. For 2006, there were 20 stoppages involving 70,000 workers with 2.7 million workdays of idleness. (See table 1 and charts A-F.) Of the 21 major work stoppages beginning in 2007, 12 were in private industry and nine were in State and local governments. In private industry, eight work stoppages occurred in goods-producing industries along with four in service-providing industries. Of the nine work stoppages in State and local governments, five were in transportation and warehousing and four were in educational services. In 2007, State and local government work stoppages accounted for just over one-third of total workers idled, but only 15 percent of lost workdays.

The mean length of a work stoppage in 2007 was 10.5 days, down from 26.5 days in 2006. Numerous work stoppages in 2007 were short in duration with six work stoppages lasting 2 days or less. (See table A.)

The major work stoppages series, which dates back to 1947, covers strikes and lockouts involving 1,000 or more employees and lasting at least one full shift. For work stoppages that began prior to 2007, only days of idleness in calendar year 2007 are counted.

Table A. Duration of work stoppages beginning in 2007, 2006, and 2005

Duration	2007		2006		2005	
	Number	Percent	Number	Percent	Number	Percent
1-2 days	6	29	5	25	4	18
3-10 days	6	29	6	30	8	36
11-30 days	7	33	6	30	6	27
31-50 days	2	10	1	5	1	5
>50 days	0	0	2	10	3	14

Note: Percent totals may not add to 100 because of rounding. The annual numbers represent the total duration of all work stoppages initiated during each calendar year.

Table B. Number of work stoppages by the number of workers idled in 2007, 2006, and 2005

Number of workers idled	2007		2006		2005	
	Number	Percent	Number	Percent	Number	Percent
1,000 to 1,999	8	38	10	50	11	50
2,000 to 2,999	2	10	2	10	5	23
3,000 to 4,999	4	19	3	15	2	9
5,000 to 7,499	3	14	2	10	2	9
7,500 to 9,999	0	0	2	10	0	0
10,000 to 19,999	1	5	1	5	1	5
20,000 or more	3	14	0	0	1	5

Note: Percent totals may not add to 100 because of rounding.

Table C. Number of work stoppages by number of work days idled in 2007, 2006, and 2005

Number of days of idleness	2007		2006		2005	
	Number	Percent	Number	Percent	Number	Percent
1,000 to 4,999	2	10	2	10	3	14
5,000 to 9,999	3	14	5	25	4	18
10,000 to 14,999	3	14	2	10	1	5
15,000 to 19,999	3	14	2	10	4	18
20,000 to 29,999	1	5	2	10	2	9
30,000 to 49,999	4	19	2	10	2	9
50,000 to 99,999	1	5	1	5	2	9
100,000 to 299,999	3	14	2	10	2	9
300,000 or more	1	5	2	10	2	9

Note: Percent totals may not add to 100 because of rounding. The annual numbers represent the number of work days idled of all work stoppages initiated during each calendar year.

The term “major work stoppage” includes both worker-initiated strikes and employer-initiated lockouts that involve 1,000 workers or more. BLS does not distinguish between lockouts and strikes in its statistics.

Information on work stoppages is obtained from reports from the Federal Mediation and Conciliation Service, State labor market information offices, BLS Strike Reports from the Office of Employment and Unemployment Statistics, and from media sources such as the Daily Labor Report and the Wall Street Journal. One or both parties involved in the work stoppage (employer or union) is contacted to verify the duration and number of workers idled by the stoppage.

Days of idleness is calculated by taking the number of workers involved in the strike or lock-out and multiplying it by the number of days workers are off the job.

For detailed monthly and annual work stoppage statistics, please visit <http://www.bls.gov/wsp>.

Table 1. Work stoppages involving 1,000 or more workers, 1947-2007

Period	Number of work stoppages beginning in period	Numbers of workers involved (thousands) ¹	Days idle ²	
			Number (thousands)	Percent of estimated working time ³
2007	21	189	1,265	(4)
2006	20	70	2,688	.01
2005	22	100	1,736	.01
2004	17	171	3,344	.01
2003	14	129	4,091	.01
2002	19	46	660	(4)
2001	29	99	1,151	(4)
2000	39	394	20,419	.06
1999	17	73	1,996	.01
1998	34	387	5,116	.02
1997	29	339	4,497	.01
1996	37	273	4,889	.02
1995	31	192	5,771	.02
1994	45	322	5,021	.02
1993	35	182	3,981	.01
1992	35	364	3,989	.01
1991	40	392	4,584	.02
1990	44	185	5,926	.02
1989	51	452	16,996	.07
1988	40	118	4,381	.02
1987	46	174	4,481	.02
1986	69	533	11,861	.05
1985	54	324	7,079	.03
1984	62	376	8,499	.04
1983	81	909	17,461	.08
1982	96	656	9,061	.04
1981	145	729	16,908	.07
1980	187	795	20,844	.09
1979	235	1,021	20,409	.09
1978	219	1,006	23,774	.11
1977	298	1,212	21,258	.10
1976	231	1,519	23,962	.12
1975	235	965	17,563	.09
1974	424	1,796	31,809	.16
1973	317	1,400	16,260	.08
1972	250	975	16,764	.09
1971	298	2,516	35,538	.19
1970	381	2,468	52,761	.29
1969	412	1,576	29,397	.16
1968	392	1,855	35,367	.20
1967	381	2,192	31,320	.18
1966	321	1,300	16,000	.10
1965	268	999	15,140	.10
1964	246	1,183	16,220	.11
1963	181	512	10,020	.07
1962	211	793	11,760	.08
1961	195	1,031	10,140	.07
1960	222	896	13,260	.09
1959	245	1,381	60,850	.43

See footnotes at end of table.

Table 1. Work stoppages involving 1,000 or more workers, 1947-2007 — Continued

Period	Number of work stoppages beginning in period	Numbers of workers involved (thousands) ¹	Days idle ²	
			Number (thousands)	Percent of estimated working time ³
1958	332	1,587	17,900	.13
1957	279	887	10,340	.07
1956	287	1,370	26,840	.20
1955	363	2,055	21,180	.16
1954	265	1,075	16,630	.13
1953	437	1,623	18,130	.14
1952	470	2,746	48,820	.38
1951	415	1,462	15,070	.12
1950	424	1,698	30,390	.26
1949	262	2,537	43,420	.38
1948	245	1,435	26,127	.22
1947	270	1,629	25,720	(⁵)

¹ Number of workers involved includes only those workers who participated in work stoppages that began in the calendar year. Workers are counted more than once if they are involved in more than one stoppage during the reference period. Numbers are rounded to the nearest thousand.

² Days idle includes all stoppages in effect during the reference period. For work stoppages that are still ongoing at the end of the calendar year, only those days of idleness in the calendar year are counted.

³ Agricultural and government employees are included in the calculation of estimated working time; private households, forestry, and fishery employees are excluded.

⁴ Less than .005.

⁵ Data not available.

Note: "Number of workers involved" in Table 1 reflects a tabulation of workers involved in a work stoppage that began in a specific year.

Table 2. Work stoppages involving 1,000 or more workers beginning in 2007

Organizations involved and location	Industry code ¹	Beginning date	Ending date	Number of workers ²	Days idle
Harley-Davidson Motor Company York, PA, International Association of Machinists, Lodge 175 Private Industry	336900	2/02/07	2/22/07	2,800	39,200
Northrop Grumman Ship Systems, Ingalls Shipyard Pascagoula, MS, Pascagoula Metal Trades Council, International Brotherhood of Electrical Workers Local 733, Office and Professional Employees International Union Local 204, Special Police and Security Officers Local 655, Separate Division of the Machinists Private Industry	336611	3/08/07	4/04/07	6,500	130,000
Community College of Philadelphia Philadelphia, PA, Faculty and Staff Federation of CCP Local 2026 Local Government	611210	3/13/07	3/27/07	1,300	14,300
National Fire Sprinkler Association Nationwide, Road Sprinkler Fitters Local 669 Private Industry	238220	4/01/07	4/16/07	3,000	33,000
Foundation Coal Holdings Waynesburg, PA, United Mine Workers Private Industry	212112	4/04/07	4/13/07	1,200	9,600
Hayward School District Hayward, CA, The Hayward Education Association Local Government	611110	4/05/07	4/25/07	1,300	19,500
Associated Wall and Ceiling Contractors of Oregon and Southwest Washington, Inc. OR, WA, Pacific Northwest Regional Council of Carpenters Private Industry	236220	6/01/07	6/19/07	1,200	15,600
National Electrical Contractors of America Puget Sound, WA, International Brotherhood of Electrical Workers Local 46 Private Industry	238210	6/01/07	6/01/07	2,800	2,800
Orange County Transportation Authority, CA, International Brotherhood of Teamsters Local 952 Local Government	485113	7/07/07	7/16/07	1,100	6,600

See footnotes at end of table.

Table 2. Work stoppages involving 1,000 or more workers beginning in 2007 — Continued

Organizations involved and location	Industry code ¹	Beginning date	Ending date	Number of workers ²	Days idle
Harlem Consolidated Schools, District 122 Machesney Park, IL, Harlem Federation of Teachers, Local 540 Local Government	611110	8/21/07	9/01/07	1,000	9,000
University of Minnesota Duluth, MN, American Federation of State, County and Municipal Employees Local 3801 Local Government	611310	9/05/07	9/21/07	3,100	40,300
Philadelphia Parking Authority Philadelphia, PA, Taxi Workers Alliance Local Government	485310	9/05/07	9/06/07	1,200	1,200
New York City Taxi & Limousine Commission New York, NY, Taxi Workers Alliance Local Government	485310	9/05/07	9/07/07	26,000	52,000
General Motors Corporation Nationwide, United Auto Workers Private Industry	336111	9/24/07	9/26/07	74,000	148,000
San Francisco Bay Area Security Officers CA, Service Employees International Union 24/7 Private Industry	561612	9/24/07	9/28/07	4,000	20,000
Sutter Hospitals CA, California Nurses Association Private Industry	622110	10/10/07	10/12/07	5,000	15,000
New York City Taxi & Limousine Commission New York, NY, Taxi Workers Alliance Local Government	485310	10/22/07	10/23/07	33,000	33,000
International Truck and Engine Corporation OH, IN, IL, PA, GA, TX, United Auto Workers Private Industry	336120	10/23/07	12/13/07	3,700	133,200
Alliance of Motion Picture and Television Producers Nationwide, Writers Guild of America West, Writers Guild of America East Private Industry	512110	11/05/07	ongoing	10,500	409,500
Paratransit Operators Coalition New York, NY, Amalgamated Transit Union Local 1181-1061 Local Government	485991	12/10/07	12/19/07	1,500	12,000

See footnotes at end of table.

Table 2. Work stoppages involving 1,000 or more workers beginning in 2007 — Continued

Organizations involved and location	Industry code ¹	Beginning date	Ending date	Number of workers ²	Days idle
Sutter Hospitals CA, California Nurses Association Private Industry	622110	12/13/07	12/14/07	5,000	10,000

¹ Industry code is from the 2002 NAICS (North American Industry Classification System).

² The number of workers involved is rounded to the nearest 100.

Chart A. Number of major work stoppages in effect, by month, 2003-2007

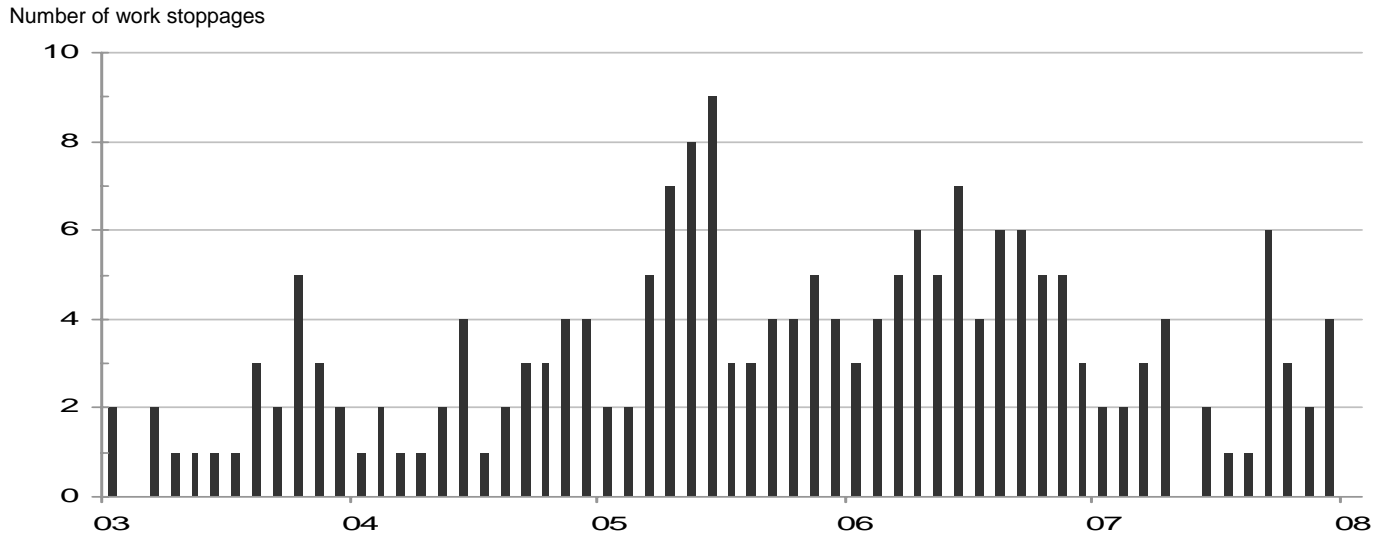


Chart B. Number of workers involved in major work stoppages in effect, by month, 2003-2007

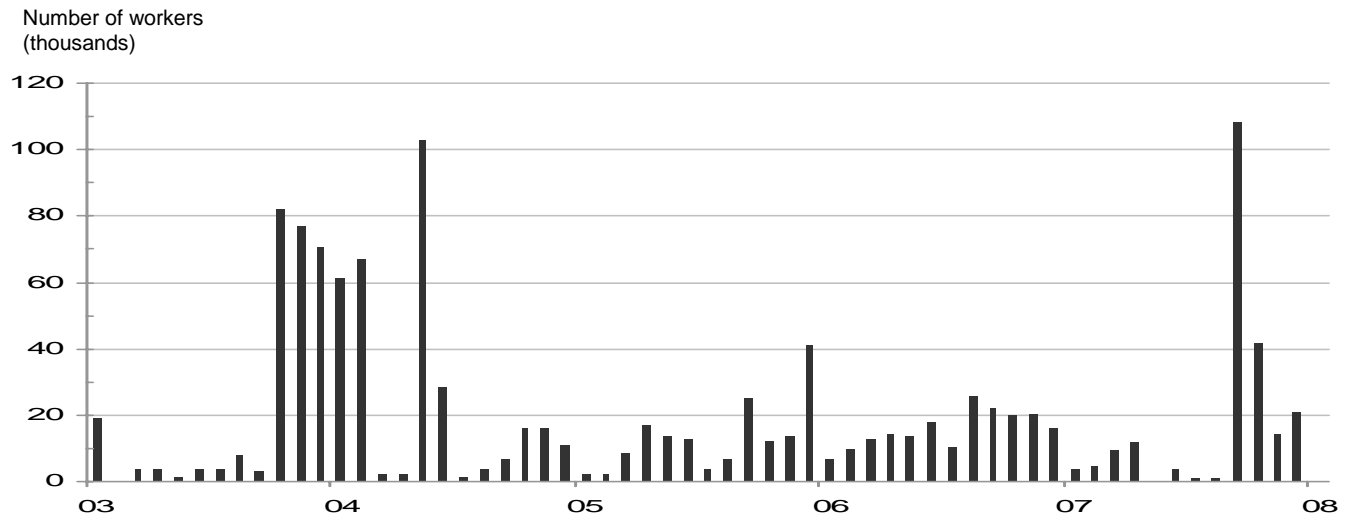


Chart C. Number of days of idleness from major work stoppages in effect, by month, 2003-2007

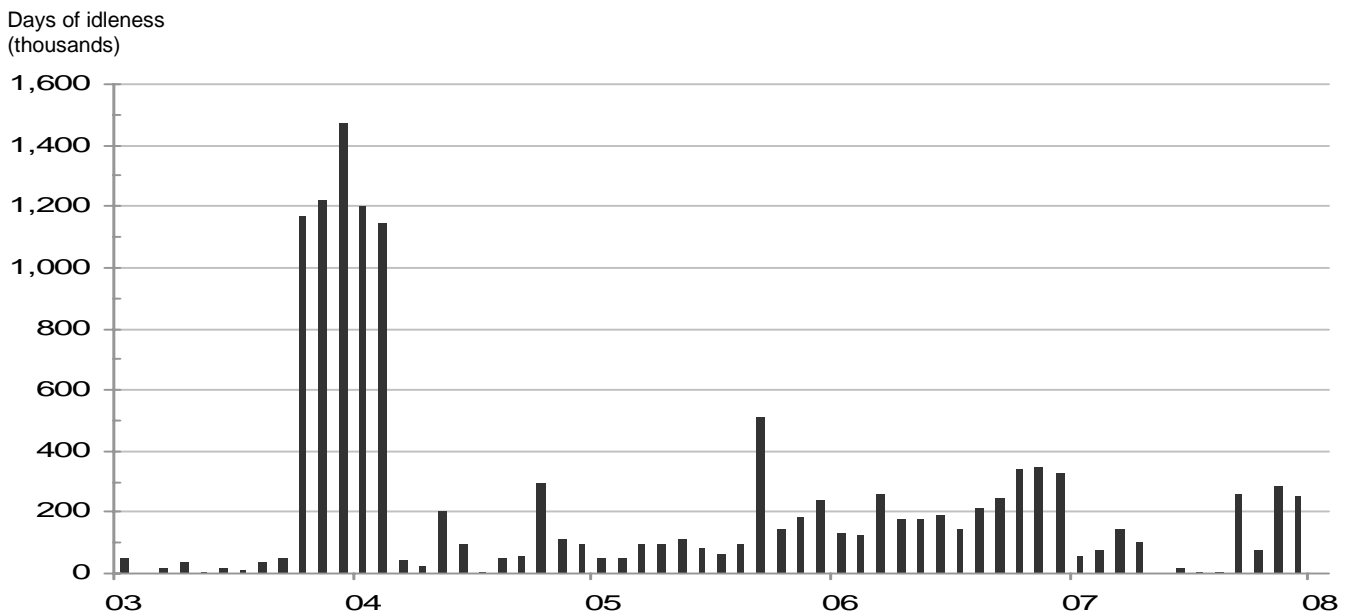


Chart D. Number of major work stoppages beginning in period, 1947-2007

Number of work stoppages

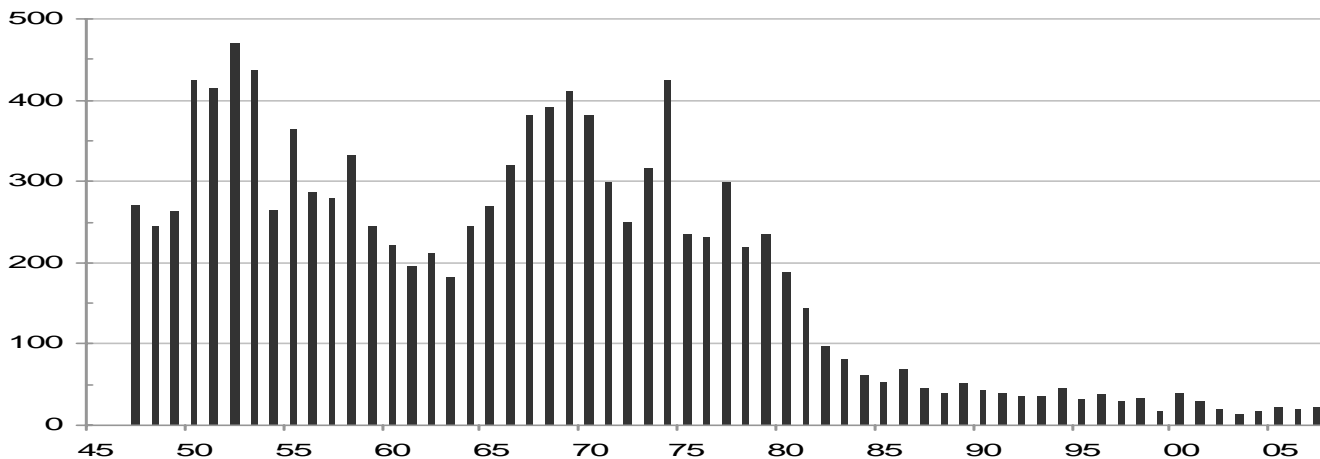


Chart E. Number of workers involved in major work stoppages beginning in period, 1947-2007

Number of workers (thousands)

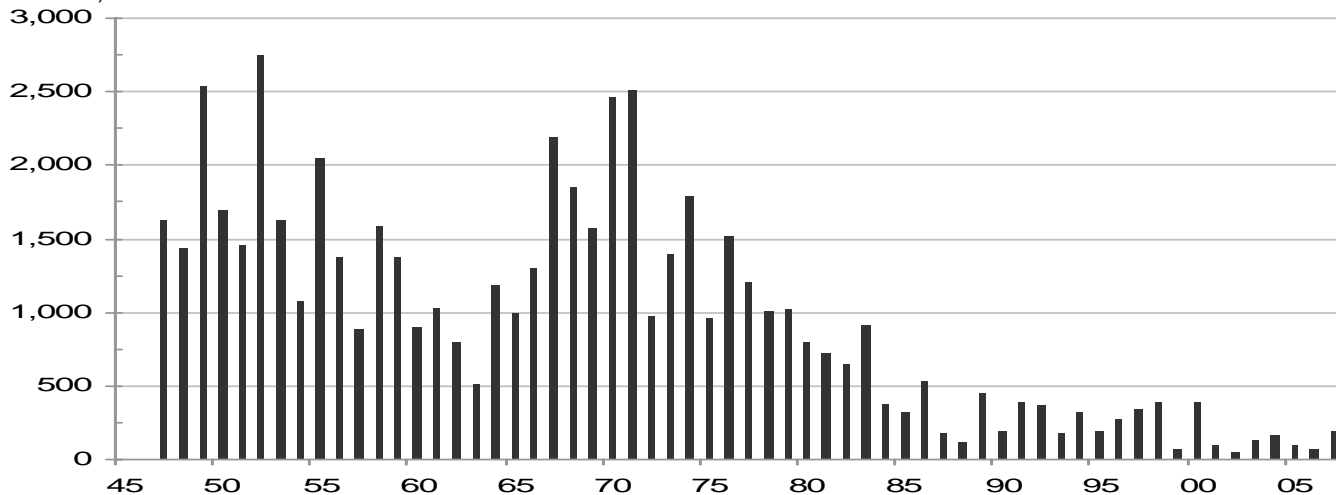


Chart F. Number of days of idleness from major work stoppages beginning in period, 1947-2007

Days of idleness (thousands)

