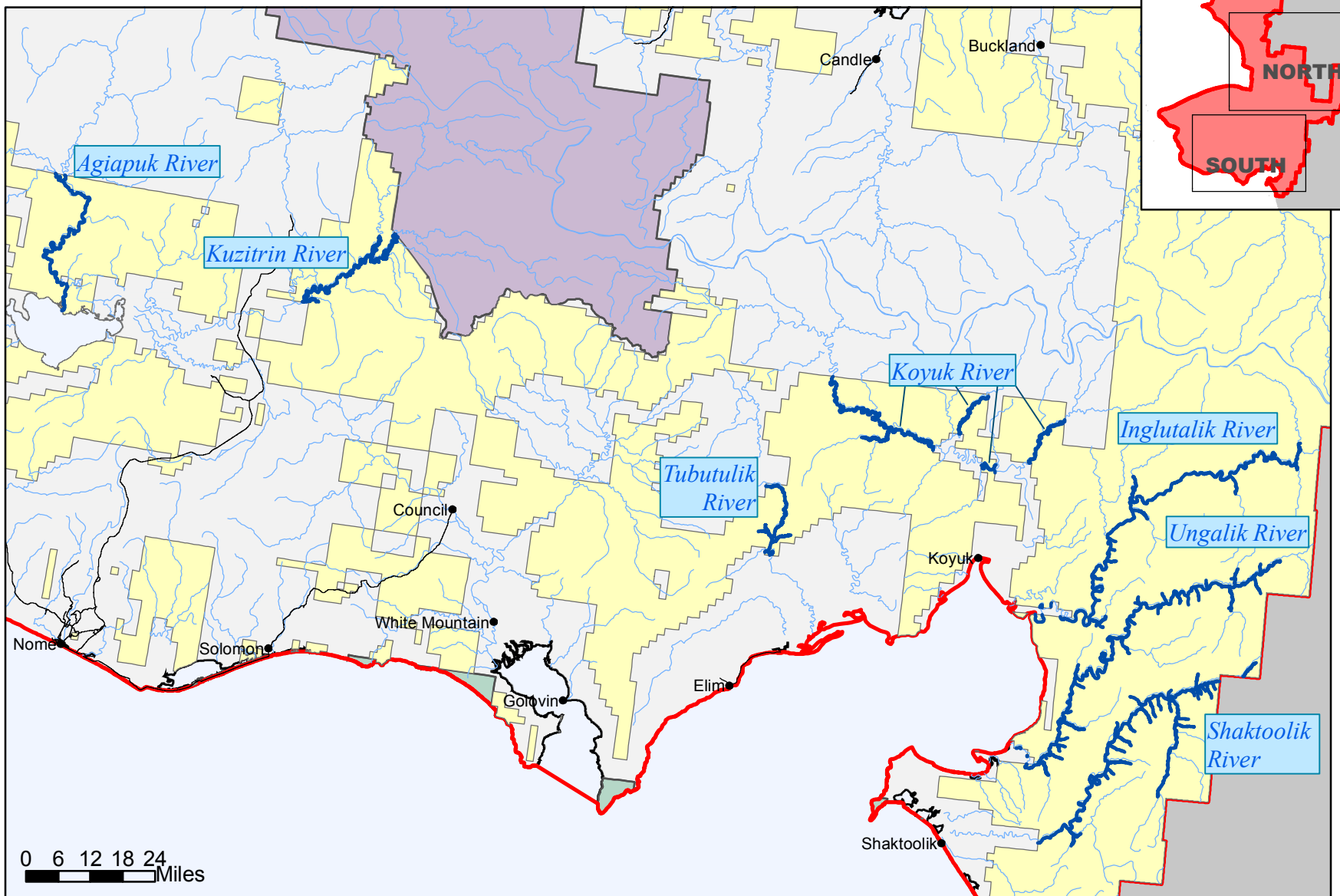
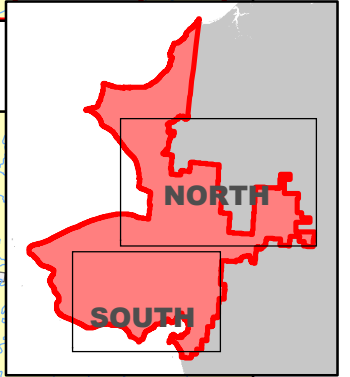


KSP Planning Area - North



KSP Planning Area - South



Fish Habitat	Generalized Land Status	Road
Rivers: Subject to Required Operating Procedure FW-7A	BLM-Managed Lands	Road
	National Park, Preserve, or Monument	KSP RMP Planning Area
	Wildlife Refuge	
	State, Native, or Private Land	

Kobuk-Seward Peninsula Proposed RMP/Final EIS
Bureau of Land Management - Alaska

Projection: Albers Conic Equal Area referencing NAD83

Source: USDOI - BLM, 2005

Map H-1 Crucial Fish Habitat Within the KSP Planning Area

The information displayed on this map should be used for graphic display only. For official land status information, refer to Cadastral Survey Plats, Master Title Plats, and case files.