



U.S. Department of Commerce  
 Economics and Statistics Administration  
 BUREAU OF THE CENSUS

# Value of New Construction Put in Place

July 1996

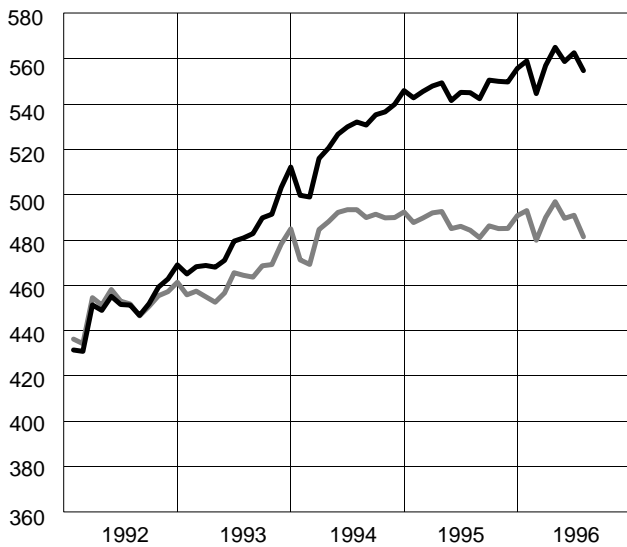
C30/96-7  
 Issued September 1996

## Monthly Value of New Construction Put in Place

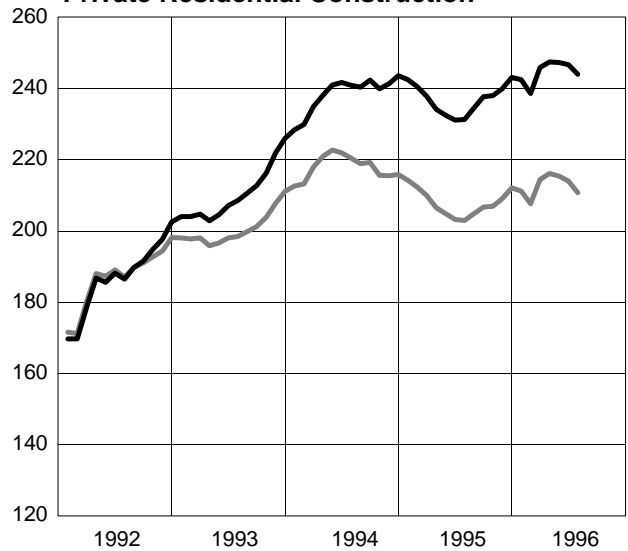
(Seasonally adjusted annual rate in billions of dollars)

— Current dollars  
 — 1992 dollars

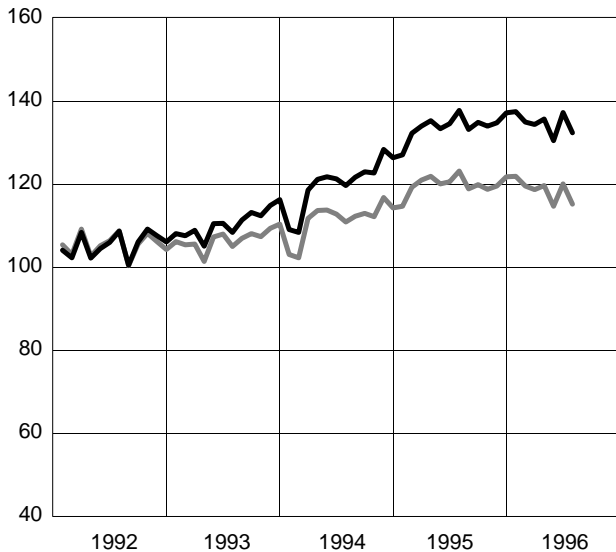
**Total New Construction**



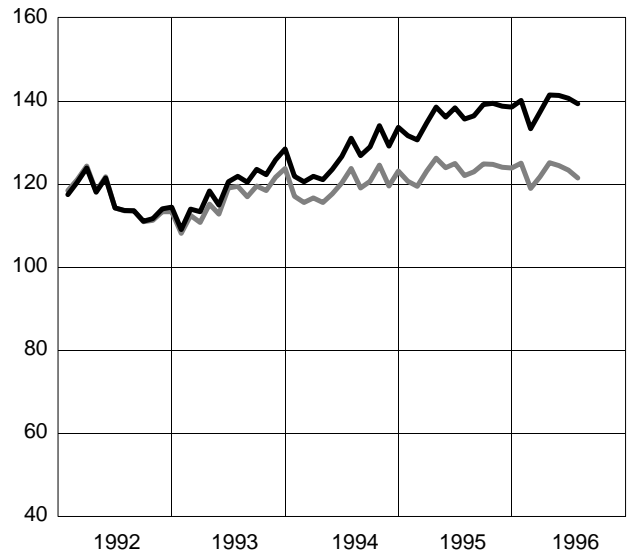
**Private Residential Construction**



**Private Nonresidential Construction**



**Public Construction**



Source: U.S. Bureau of the Census, Value of New Construction Put in Place.

**VALUE OF NEW CONSTRUCTION PUT IN PLACE**

New construction put in place during July 1996 was estimated at a seasonally adjusted annual rate of \$554.7 billion, 1(±5) percent below the revised June estimate of \$562.6 billion. The July figure represents a 2(±5) percent increase over July 1995.

During the first 7 months of this year \$310.4 billion of new construction was put in place, 3 percent above the \$302.2 billion for the same period in 1995.

In constant (1992) dollars, the July annual rate was \$481.3 billion, 2(±5) percent below the revised June estimate of \$490.8 billion.

Spending on new residential housing units was at a seasonally adjusted annual rate of \$174.7 billion in July, 2(±2) percent below the revised June estimate of \$177.5 billion. Nonresidential building construction was at a rate of \$132.3 billion, 4(±3) percent below the revised June estimate of \$137.2 billion.

In July, the estimated seasonally adjusted annual rate of public construction put in place was \$139.3 billion, 1(±5) percent below the revised June estimate of \$140.6 billion.

The “value of new construction put in place” is a measure of the value of construction installed or erected at the site during a given period. For an individual project, this includes—

1. Cost of materials installed or erected.
2. Cost of labor (both by contractors and force account) and a proportionate share of the cost of construction equipment rental.
3. Contractor's profit.
4. Project owner's overhead and office costs.
5. Cost of architectural and engineering work.
6. Miscellaneous costs chargeable to the project on the owner's books.
7. Interest and taxes paid during construction.

The total value-in-place for a given period is the sum of the value of work done on all projects underway during this period, regardless of when work on each individual project was started or when payment was made to the contractors. For some categories, estimates are derived by distributing the total construction cost of the project by means of historic construction progress patterns.

**ADDITIONAL DATA**

Additional data related to the value of new construction put in place can be found in the following publications:

- Current Construction Reports, *Value of New Construction Put in Place: May 1995*, C30/96-5, U.S. Department of Commerce, Bureau of the Census, Washington, DC, 1996; contains annual data for 1964-1995 and monthly data for 1993 to 1995.
- Current Construction Reports, *Value of New Construction Put in Place in the United States, 1964*

*to 1980*, C30-80 supplement, U.S. Department of Commerce, Bureau of the Census, Washington, DC, 1981; contains annual data for 1915 to 1963.

- Current Construction Reports Special Study, *Expenditures for Nonresidential Improvements and Repairs: 1992*, U.S. Department of Commerce, Bureau of the Census, Washington, DC, 1994.

For special supplements in the C30 reports, refer to table below.

Title	C30 Issue					
Value of privately owned nonresidential building projects started and completed (quarterly) . . . . .	96-3	95-12	95-9	95-6	95-3	94-12
Value of new privately owned nonresidential buildings by geographic area and detailed types of construction: 1973 to 94 (annual) . . . . .	95-7	94-7	93-7	92-7	91-7	90-7
Total time and monthly progress from start to completion for private nonresidential buildings (annual) . . . . .	92-10					
Total time and monthly progress from start to completion for State and Local construction (annual) . . . . .	92-10					

Table 1. Annual Value of New Construction Put in Place: 1991-1995

[Millions of dollars]

Type of construction	Current dollars					Constant (1992) dollars				
	1991	1992	1993	1994	1995	1991	1992	1993	1994	1995
<b>Total new construction . . . . .</b>	<b>424,176</b>	<b>452,086</b>	<b>482,737</b>	<b>527,063</b>	<b>547,079</b>	<b>429,592</b>	<b>451,998</b>	<b>464,985</b>	<b>487,644</b>	<b>486,666</b>
<b>Private construction . . . . .</b>	<b>314,067</b>	<b>336,239</b>	<b>362,587</b>	<b>400,008</b>	<b>410,196</b>	<b>319,248</b>	<b>336,126</b>	<b>347,754</b>	<b>367,898</b>	<b>363,086</b>
Residential buildings . . . . .	157,835	187,819	210,455	238,874	236,597	160,989	187,687	200,502	217,996	207,392
New housing units . . . . .	110,592	129,600	144,071	167,919	162,898	112,796	129,522	137,243	153,250	142,790
1 unit . . . . .	95,444	116,505	133,282	153,838	145,009	97,333	116,419	126,960	140,416	127,108
2 or more units . . . . .	15,148	13,094	10,788	14,081	17,889	15,462	13,103	10,283	12,833	15,682
Improvements . . . . .	47,243	58,219	66,384	70,955	73,699	48,194	58,165	63,259	64,746	64,601
Nonresidential buildings . . . . .	116,570	105,646	110,635	120,285	133,949	118,266	105,615	106,729	111,416	119,835
Industrial . . . . .	31,424	29,029	26,482	28,947	32,301	31,881	29,027	25,554	26,803	28,902
Office . . . . .	25,951	20,271	20,920	22,178	25,254	26,330	20,271	20,197	20,553	22,603
Hotels, motels . . . . .	6,939	3,691	4,565	4,648	7,201	7,044	3,690	4,405	4,308	6,438
Other commercial . . . . .	29,355	29,197	32,453	37,551	42,272	29,780	29,172	31,292	34,756	37,809
Religious . . . . .	3,521	3,485	3,887	3,869	4,318	3,571	3,483	3,748	3,584	3,862
Educational . . . . .	4,193	4,474	4,649	4,822	5,493	4,253	4,475	4,484	4,471	4,915
Hospital and institutional . . . . .	10,567	11,487	12,492	12,268	11,173	10,721	11,485	12,050	11,377	9,998
Miscellaneous <sup>1</sup> . . . . .	4,619	4,012	5,188	6,002	5,937	4,685	4,011	5,000	5,565	5,309
Farm nonresidential . . . . .	2,753	2,398	3,291	3,246	3,473	2,792	2,396	3,174	3,007	3,107
Public utilities . . . . .	33,966	36,807	34,925	34,713	33,348	34,270	36,859	34,120	32,717	30,169
Telecommunications . . . . .	8,962	8,993	9,619	10,157	10,747	8,958	9,005	9,468	9,875	9,798
Other public utilities . . . . .	25,004	27,814	25,306	24,556	22,601	25,313	27,854	24,652	22,842	20,372
Railroads . . . . .	2,406	2,928	3,108	3,340	3,341	2,394	2,926	3,056	3,186	3,046
Electric light and power . . . . .	16,293	17,136	15,567	14,918	13,126	16,510	17,184	15,096	13,877	11,825
Gas . . . . .	5,555	6,901	5,645	5,300	5,205	5,647	6,895	5,536	4,861	4,667
Petroleum pipelines . . . . .	750	849	986	998	929	762	849	965	918	834
All other private <sup>2</sup> . . . . .	2,943	3,570	3,281	2,890	2,829	2,930	3,569	3,229	2,763	2,583
<b>Public construction . . . . .</b>	<b>110,109</b>	<b>115,847</b>	<b>120,150</b>	<b>127,055</b>	<b>136,883</b>	<b>110,345</b>	<b>115,872</b>	<b>117,231</b>	<b>119,747</b>	<b>123,579</b>
Buildings . . . . .	47,406	49,986	52,071	53,930	59,783	48,106	49,988	50,167	49,882	53,373
Housing and redevelopment . . . . .	3,587	4,138	4,855	5,247	6,156	3,661	4,136	4,629	4,788	5,397
Industrial . . . . .	1,824	1,876	1,718	1,465	1,510	1,850	1,875	1,658	1,358	1,351
Educational . . . . .	19,203	20,647	22,103	23,457	25,608	19,475	20,645	21,314	21,731	22,905
Hospital . . . . .	2,829	3,383	3,666	3,940	4,345	2,869	3,383	3,537	3,652	3,888
Other <sup>3</sup> . . . . .	19,965	19,943	19,730	19,821	22,164	20,252	19,949	19,029	18,353	19,832
Highways and streets . . . . .	32,042	33,106	34,341	37,671	38,159	31,329	33,132	34,205	36,463	34,931
Military facilities . . . . .	1,837	2,502	2,453	2,318	3,002	1,831	2,502	2,405	2,196	2,721
Conservation and development . . . . .	5,011	5,952	5,909	6,370	6,389	5,075	5,946	5,745	6,002	5,798
Sewer systems . . . . .	10,039	9,663	9,354	10,081	10,869	10,169	9,658	9,095	9,499	9,859
Water supply facilities . . . . .	4,981	5,162	5,373	5,388	6,085	5,083	5,170	5,143	4,911	5,407
Miscellaneous public <sup>4</sup> . . . . .	8,793	9,477	10,649	11,298	12,597	8,751	9,475	10,470	10,793	11,491

<sup>1</sup>Includes amusement and recreational buildings, bus and airline terminals, animal hospitals and shelters, etc.

<sup>2</sup>Includes privately owned streets and bridges, parking areas, sewer and water facilities, parks and playgrounds, golf courses, airfields, etc.

<sup>3</sup>Includes general administrative buildings, prisons, police and fire stations, courthouses, civic centers, passenger terminals, space facilities, postal facilities, etc.

<sup>4</sup>Includes open amusement and recreational facilities, power generating facilities, transit systems, airfields, open parking facilities, etc.

Table 2. Annual Value of New Public Construction Put in Place: 1991-1995

[Millions of dollars]

Type of construction	Current dollars					Constant (1992) dollars				
	1991	1992	1993	1994	1995	1991	1992	1993	1994	1995
<b>Total public construction . . . .</b>	<b>110,109</b>	<b>115,847</b>	<b>120,150</b>	<b>127,055</b>	<b>136,883</b>	<b>110,345</b>	<b>115,872</b>	<b>117,231</b>	<b>119,747</b>	<b>123,579</b>
<b>State and local construction . . . .</b>	<b>97,264</b>	<b>101,471</b>	<b>105,726</b>	<b>112,699</b>	<b>121,148</b>	<b>97,385</b>	<b>101,497</b>	<b>103,204</b>	<b>106,258</b>	<b>109,374</b>
Total buildings . . . . .	41,520	44,022	46,377	48,787	53,740	42,134	44,022	44,677	45,127	47,975
Housing and redevelopment . . . .	3,374	3,977	4,619	4,801	5,576	3,443	3,975	4,405	4,382	4,889
Educational . . . . .	19,183	20,617	22,082	23,430	25,582	19,454	20,616	21,294	21,707	22,881
Hospital . . . . .	2,125	2,626	2,760	3,089	3,305	2,156	2,626	2,661	2,863	2,957
Other <sup>1</sup> . . . . .	16,838	16,801	16,916	17,467	19,277	17,081	16,805	16,317	16,175	17,248
Highways and streets . . . . .	31,806	32,886	34,003	37,327	37,826	31,098	32,912	33,869	36,130	34,626
Conservation and development ..	1,408	1,419	1,692	1,994	2,213	1,426	1,417	1,643	1,878	2,009
Sewer systems . . . . .	10,039	9,663	9,354	10,081	10,869	10,169	9,658	9,095	9,499	9,859
Water supply facilities . . . . .	4,981	5,162	5,373	5,388	6,085	5,083	5,170	5,143	4,911	5,407
Miscellaneous nonbuilding <sup>2</sup> . . . .	7,510	8,320	8,928	9,122	10,416	7,474	8,318	8,777	8,713	9,498
<b>Federal construction . . . . .</b>	<b>12,845</b>	<b>14,376</b>	<b>14,424</b>	<b>14,356</b>	<b>15,735</b>	<b>12,960</b>	<b>14,375</b>	<b>14,027</b>	<b>13,488</b>	<b>14,205</b>
Total buildings . . . . .	5,886	5,964	5,695	5,142	6,043	5,972	5,966	5,490	4,755	5,398
Housing . . . . .	213	161	236	446	580	217	161	225	406	508
Industrial . . . . .	1,824	1,876	1,718	1,465	1,510	1,850	1,875	1,658	1,358	1,351
Educational . . . . .	20	30	21	26	27	20	30	20	24	24
Hospital . . . . .	703	757	906	851	1,040	713	757	875	789	931
Other <sup>3</sup> . . . . .	3,127	3,141	2,814	2,354	2,887	3,171	3,144	2,713	2,178	2,584
Highways and streets . . . . .	236	220	338	344	333	231	220	336	333	305
Military facilities . . . . .	1,837	2,502	2,453	2,318	3,002	1,831	2,502	2,405	2,196	2,721
Conservation and development ..	3,603	4,533	4,217	4,376	4,176	3,650	4,529	4,102	4,124	3,789
Miscellaneous public <sup>4</sup> . . . . .	1,283	1,157	1,722	2,176	2,181	1,277	1,157	1,693	2,080	1,993

<sup>1</sup>Includes general administrative buildings, prisons, police and fire stations, courthouses, passenger terminals, civic centers, etc.

<sup>2</sup>Includes open amusement and recreational facilities, power generating facilities, transit systems, airfields, open parking facilities, etc.

<sup>3</sup>Includes federal office buildings, prisons, courthouses, space facilities, postal facilities, etc.

<sup>4</sup>Includes federal airport facilities, fish and wildlife preservation facilities, VA cemeteries, etc.

**Table 3. Monthly Value of New Construction Put in Place—Not Seasonally Adjusted in Current Dollars**

[Millions of dollars]

Period	Total new construction	Private construction																All other private <sup>5</sup>	
		Total <sup>1</sup>	Residential buildings					Nonresidential buildings									Public utilities <sup>4</sup>		
			Total <sup>2</sup>	New housing units			Total	Industrial	Office	Hotels, motels	Other commercial	Religious	Educational	Hospital and institutional	Miscellaneous <sup>3</sup>	Total	Telecommunications		
				Total	1 unit	2 units or more													
<b>YEAR TO DATE</b>																			
July 1995	302,242	228,988	130,344	89,220	79,375	9,845	75,347	18,502	14,968	3,736	23,135	2,338	3,138	6,373	3,158	(NA)	6,099	1,670	
July 1996	310,358	234,976	136,438	97,472	85,974	11,499	76,285	16,863	13,436	6,108	24,022	2,387	3,135	6,197	4,137	(NA)	(NA)	1,313	
Percent change	3	3	5	9	8	17	1	-9	-10	63	4	2	(Z)	-3	31	(NA)	(NA)	-21	
<b>MONTHLY DATA</b>																			
1994: July	49,045	36,518	22,830	15,816	14,604	1,213	10,228	2,370	1,741	319	3,466	315	476	1,026	516	(NA)	808	287	
August	51,445	37,974	23,342	16,064	14,718	1,347	10,908	2,521	1,922	356	3,702	381	451	1,081	494	(NA)	993	266	
September	50,829	37,422	22,671	16,055	14,574	1,481	11,167	2,649	2,005	374	3,842	355	402	999	541	(NA)	886	280	
October	49,326	36,823	22,416	15,531	14,183	1,348	10,886	2,586	1,877	378	3,785	367	379	991	524	(NA)	881	270	
November	46,640	35,667	21,122	15,002	13,612	1,390	10,975	2,861	2,048	423	3,382	339	384	1,022	516	(NA)	947	255	
December	41,499	31,745	18,081	12,863	11,543	1,320	10,225	2,721	1,837	434	3,143	326	364	956	443	(NA)	985	217	
1995: January	36,575	28,263	16,011	11,679	10,473	1,206	9,298	2,246	1,878	456	2,765	284	349	898	423	(NA)	746	207	
February	35,643	27,595	14,901	10,755	9,536	1,219	9,668	2,415	1,904	479	2,892	296	364	928	390	(NA)	702	200	
March	40,308	31,144	17,229	12,327	10,921	1,406	10,553	2,566	2,082	623	3,261	296	388	903	434	(NA)	900	224	
April	43,009	32,880	18,574	12,595	11,192	1,403	10,899	2,807	2,152	477	3,266	340	432	943	483	(NA)	885	244	
May	46,776	35,116	20,219	13,296	11,780	1,515	11,433	2,872	2,411	557	3,364	370	453	951	455	(NA)	864	266	
June	49,884	36,874	21,507	13,923	12,420	1,503	11,730	2,808	2,226	571	3,820	368	564	868	504	(NA)	1,032	269	
July	50,047	37,117	21,904	14,646	13,053	1,593	11,766	2,788	2,316	573	3,767	384	588	882	469	(NA)	970	260	
August	52,492	38,121	22,809	15,341	13,645	1,696	11,888	2,725	2,268	595	3,875	412	626	911	475	(NA)	976	235	
September	51,943	37,688	22,231	15,452	13,843	1,609	12,086	2,832	2,144	611	4,095	416	499	958	531	(NA)	917	242	
October	50,997	37,711	22,239	15,358	13,754	1,605	12,029	2,773	2,039	632	4,072	436	437	1,003	637	(NA)	951	241	
November	47,468	35,630	20,966	14,816	13,258	1,558	11,509	2,696	1,944	797	3,713	390	435	965	571	(NA)	936	235	
December	41,937	32,058	18,008	12,711	11,134	1,578	11,090	2,773	1,892	830	3,382	326	358	963	567	(NA)	866	207	
1996: January	37,712	28,828	15,975	11,645	10,246	1,399	10,080	2,424	1,708	785	3,068	314	348	913	521	(NA)	785	192	
February	36,501	28,214	15,183	11,117	9,699	1,419	10,255	2,392	1,765	847	3,150	312	377	857	556	(NA)	753	177	
March	40,506	31,479	17,863	13,089	11,548	1,541	10,475	2,455	1,766	854	3,236	302	414	843	605	(NA)	811	182	
April	44,682	34,126	19,646	14,119	12,320	1,799	11,064	2,453	1,872	893	3,564	356	417	857	653	(NA)	942	183	
May <sup>f</sup>	48,230	36,092	21,466	15,061	13,225	1,836	11,169	2,333	2,033	877	3,620	353	469	906	580	(NA)	942	187	
June <sup>f</sup>	50,958	38,098	23,007	16,028	14,171	1,858	11,783	2,466	2,204	952	3,705	358	553	923	623	(NA)	851	191	
July <sup>p</sup>	51,770	38,139	23,297	16,412	14,767	1,646	11,458	2,341	2,088	900	3,680	393	557	899	601	(NA)	(NA)	202	
<b>PERCENT CHANGE</b>																			
June 1996-																			
July 1996	2	(Z)	1	2	4	-11	-3	-5	-5	-5	-1	10	1	-3	-4	(NA)	(NA)	6	

See footnotes at end of table.

Table 3. Monthly Value of New Construction Put in Place—Not Seasonally Adjusted in Current Dollars—Con.

[Millions of dollars]

Period	Public construction												
	Total	Buildings						Highways and streets	Military facilities	Conservation and development	Sewer systems	Water supply facilities	Miscellaneous public <sup>7</sup>
		Total	Housing and redevelopment	Industrial	Educational	Hospital	Other public buildings <sup>6</sup>						
<b>YEAR TO DATE</b>													
July 1995.....	73,254	33,647	3,438	881	14,053	2,496	12,780	18,416	1,667	3,662	5,871	3,245	6,746
July 1996.....	75,382	34,395	3,177	858	14,971	2,700	12,689	19,425	1,861	3,155	6,035	3,497	7,014
Percent change.....	3	2	-8	-3	7	8	-1	5	12	-14	3	8	4
<b>MONTHLY DATA</b>													
1994: July.....	12,527	4,850	412	108	2,320	358	1,653	4,419	205	539	898	518	1,097
August.....	13,471	5,132	419	120	2,510	306	1,776	4,852	208	554	981	492	1,252
September.....	13,408	4,961	460	166	2,191	346	1,799	4,495	256	923	1,057	567	1,149
October.....	12,503	4,885	516	112	2,150	316	1,792	4,314	152	496	948	624	1,084
November.....	10,973	4,670	468	119	1,918	329	1,837	3,190	196	519	925	473	1,001
December.....	9,754	4,582	482	126	1,742	360	1,872	2,176	243	599	864	427	863
1995: January.....	8,312	4,179	448	125	1,645	317	1,643	1,538	220	461	741	430	743
February.....	8,048	4,145	425	125	1,669	329	1,596	1,393	178	479	698	433	723
March.....	9,164	4,464	460	136	1,793	344	1,730	1,834	282	567	796	395	826
April.....	10,130	4,724	499	130	1,887	373	1,836	2,308	223	508	787	440	1,140
May.....	11,659	5,082	505	125	2,044	391	2,017	3,328	246	516	878	466	1,144
June.....	13,010	5,609	578	118	2,421	377	2,115	3,855	263	577	1,057	514	1,136
July.....	12,931	5,444	522	123	2,593	364	1,842	4,160	256	554	915	568	1,034
August.....	14,371	5,750	552	123	2,798	321	1,956	4,929	262	653	1,025	606	1,147
September.....	14,255	5,689	564	180	2,526	448	1,971	4,506	361	762	1,060	533	1,345
October.....	13,286	5,154	566	99	2,244	356	1,890	4,588	157	375	1,058	619	1,336
November.....	11,839	4,995	527	117	2,091	375	1,885	3,358	267	479	1,026	596	1,119
December.....	9,879	4,548	510	110	1,896	350	1,682	2,364	290	458	830	487	904
1996: January.....	8,884	4,516	488	105	1,842	355	1,726	1,716	278	381	748	380	865
February.....	8,286	4,144	411	107	1,751	378	1,496	1,703	267	378	696	398	700
March.....	9,027	4,478	406	129	1,930	384	1,629	1,848	286	431	770	417	798
April.....	10,556	4,779	421	122	2,103	366	1,768	2,545	252	474	925	558	1,023
May <sup>f</sup> .....	12,138	5,343	508	130	2,264	420	2,021	3,357	261	491	987	551	1,149
June <sup>f</sup> .....	12,860	5,475	438	132	2,466	403	2,036	3,860	262	495	965	576	1,228
July <sup>p</sup> .....	13,631	5,660	506	133	2,616	393	2,014	4,397	255	505	944	618	1,252
<b>PERCENT CHANGE</b>													
June 1996- July 1996.....	6	3	16	1	6	-2	-1	14	-3	2	-2	7	2

NA Not available, but estimates are included in totals. <sup>p</sup>Preliminary. <sup>f</sup>Revised. <sup>Z</sup>Less than 0.5 percent.

<sup>1</sup>Includes farm nonresidential and other private categories, not shown separately. <sup>2</sup>Includes residential improvements, not shown separately. <sup>3</sup>Includes amusement and recreational buildings, bus and airline terminals, animal hospitals and shelters, etc. <sup>4</sup>Includes gas, electric, railroad, and petroleum pipelines, not shown separately. <sup>5</sup>Includes privately owned streets and bridges, parking areas, sewer and water facilities, parks and playgrounds, golf courses, airfields, etc. <sup>6</sup>Includes general administrative buildings, prisons, police and fire stations, courthouses, civic centers, passenger terminals, space facilities, postal facilities etc. <sup>7</sup>Includes open amusement and recreational facilities, power generating facilities, transit systems, airfields, open parking facilities, etc.

Table 4. Monthly Value of New Construction Put in Place—Seasonally Adjusted Annual Rate in Current Dollars

[Millions of dollars]

Period		Total new construction	Private construction															All other private <sup>5</sup>	
			Residential buildings					Nonresidential buildings									Public utilities <sup>4</sup>		
			Total <sup>1</sup>	Total <sup>2</sup>	New housing units			Total	Industrial	Office	Hotels, motels	Other commercial	Religious	Educational	Hospital and institutional	Miscellaneous <sup>3</sup>	Total		Telecommunications
					Total	1 unit	2 units or more												
1994:	July	531,976	400,978	240,851	170,300	156,890	13,410	119,595	28,186	21,126	3,732	39,054	3,871	4,869	12,705	6,053	(NA)	9,977	3,163
	August	530,744	403,993	240,386	169,554	155,060	14,494	121,628	29,314	22,047	4,211	39,415	4,060	4,465	12,564	5,552	(NA)	10,649	3,072
	September	535,189	406,266	242,418	170,829	153,950	16,880	122,946	30,274	23,049	4,293	39,541	3,715	4,401	11,643	6,028	(NA)	10,015	3,072
	October	536,509	402,554	239,909	167,688	152,366	15,323	122,623	29,248	22,612	4,592	40,622	3,879	4,483	11,393	5,793	(NA)	10,100	2,940
	November	539,847	410,777	241,309	168,162	151,811	16,351	128,334	34,026	24,113	5,163	38,767	3,710	4,910	11,796	5,850	(NA)	10,404	2,850
	December	545,940	412,358	243,607	169,768	153,056	16,711	126,255	31,396	23,371	5,426	39,740	4,004	5,035	11,675	5,607	(NA)	11,110	2,770
1995:	January	542,682	411,081	242,504	169,184	152,339	16,845	127,047	30,114	24,201	6,020	40,466	3,901	5,095	11,358	5,893	(NA)	11,026	2,750
	February	545,532	414,887	240,496	167,438	150,374	17,065	132,172	32,200	24,383	6,219	42,480	4,160	5,390	11,866	5,473	(NA)	10,242	2,897
	March	547,886	413,202	237,763	163,771	145,452	18,319	133,946	32,075	25,058	7,539	43,620	3,916	5,199	11,013	5,525	(NA)	10,989	3,001
	April	549,273	410,812	234,221	159,871	142,420	17,452	135,161	34,336	25,588	5,617	42,458	4,399	5,575	11,571	5,617	(NA)	11,765	3,127
	May	541,548	405,495	232,480	157,569	140,104	17,465	133,296	33,591	27,118	6,313	39,849	4,462	5,261	11,230	5,473	(NA)	10,042	3,093
	June	545,145	406,799	231,082	155,869	139,025	16,844	134,482	32,746	26,139	6,357	42,964	4,535	5,702	10,216	5,822	(NA)	11,390	3,023
	July	545,004	409,444	231,325	158,319	140,605	17,714	137,695	33,059	28,356	6,792	42,645	4,623	5,831	10,832	5,557	(NA)	11,844	2,858
	August	542,324	405,911	234,464	161,783	143,633	18,150	133,098	31,809	26,167	6,903	41,744	4,426	6,121	10,655	5,273	(NA)	10,260	2,741
	September	550,467	411,326	237,663	164,310	145,975	18,335	134,793	32,427	25,003	7,365	42,657	4,431	5,652	11,225	6,032	(NA)	10,739	2,682
	October	549,952	410,550	237,952	165,774	147,625	18,149	133,914	31,422	23,939	7,335	43,320	4,520	5,189	11,369	6,821	(NA)	10,501	2,626
	November	549,745	411,015	239,938	166,432	147,997	18,434	134,713	32,032	23,207	9,708	42,348	4,281	5,394	11,228	6,515	(NA)	10,351	2,619
	December	555,702	417,191	243,104	168,147	148,283	19,864	137,111	31,996	23,769	10,471	42,678	4,082	5,099	11,868	7,148	(NA)	10,354	2,612
1996:	January	558,952	418,896	242,474	169,188	149,752	19,436	137,412	32,495	22,274	10,338	44,201	4,224	5,110	11,468	7,301	(NA)	11,367	2,538
	February	544,577	411,248	238,558	166,911	147,696	19,215	134,914	30,792	22,154	10,191	44,307	4,209	5,247	10,620	7,394	(NA)	10,441	2,464
	March	556,983	419,726	245,881	173,821	153,802	20,018	134,302	30,593	21,827	10,321	43,676	4,134	5,724	10,483	7,543	(NA)	10,500	2,453
	April	564,985	423,568	247,469	178,739	156,274	22,465	135,553	30,316	22,137	10,325	45,348	4,384	5,320	10,221	7,501	(NA)	11,487	2,339
	May <sup>f</sup>	558,712	417,396	247,290	177,985	156,816	21,169	130,404	27,283	23,009	9,995	42,463	4,356	5,402	10,883	7,011	(NA)	11,078	2,169
	June <sup>f</sup>	562,556	421,955	246,735	177,522	156,727	20,795	137,169	28,671	26,506	11,047	42,502	4,526	5,673	11,032	7,213	(NA)	9,986	2,164
	July <sup>p</sup>	554,722	415,413	243,992	174,738	156,535	18,202	132,336	27,819	24,664	10,537	41,349	4,553	5,496	10,847	7,072	(NA)	(NA)	2,260
<b>PERCENT CHANGE</b>																			
	June 1996-																		
	July 1996	-1	-2	-1	-2	(Z)	-12	-4	-3	-7	-5	-3	1	-3	-2	-2	(NA)	(NA)	4

See footnotes at end of table.

Table 4. Monthly Value of New Construction Put in Place—Seasonally Adjusted Annual Rate in Current Dollars—Con.

[Millions of dollars]

Period	Public construction												
	Total	Buildings						Highways and streets	Military facilities	Conservation and development	Sewer systems	Water supply facilities	Miscellaneous public <sup>7</sup>
		Total	Housing and redevelopment	Industrial	Educational	Hospital	Other public buildings <sup>6</sup>						
1994: July . . . . .	130,998	52,837	4,820	1,278	22,842	4,247	19,650	41,496	2,330	6,149	10,363	5,740	12,084
August . . . . .	126,752	52,841	5,000	1,435	22,826	3,597	19,981	38,082	2,442	5,713	10,108	5,317	12,249
September . . . . .	128,923	53,190	5,177	1,525	23,052	3,852	19,584	37,585	2,326	7,573	10,874	6,269	11,107
October . . . . .	133,955	57,886	6,061	1,536	25,474	3,727	21,087	38,062	2,312	7,322	9,967	6,407	11,999
November . . . . .	129,070	56,422	5,385	1,543	24,124	3,903	21,466	36,626	2,235	6,443	10,328	5,359	11,657
December . . . . .	133,582	58,789	5,919	1,501	23,780	4,292	23,297	35,863	2,742	7,843	11,422	5,459	11,464
1995: January . . . . .	131,601	57,719	5,792	1,623	23,928	4,107	22,268	35,977	2,818	6,733	10,748	6,178	11,428
February . . . . .	130,645	58,253	5,654	1,706	24,787	4,296	21,811	34,383	2,711	7,011	10,514	6,724	11,049
March . . . . .	134,684	59,063	5,796	1,606	25,193	4,309	22,160	37,621	3,144	7,237	10,577	5,452	11,589
April . . . . .	138,461	60,399	6,130	1,563	25,559	4,539	22,607	37,278	2,911	6,692	10,272	5,653	15,257
May . . . . .	136,053	60,656	6,046	1,497	25,052	4,719	23,342	37,044	2,935	6,069	10,581	5,351	13,418
June . . . . .	138,346	61,574	6,375	1,346	25,923	4,353	23,577	37,307	2,980	6,422	11,951	5,660	12,451
July . . . . .	135,560	59,453	6,263	1,426	25,546	4,320	21,897	38,343	3,152	6,440	10,618	6,115	11,439
August . . . . .	136,413	58,626	6,364	1,498	25,141	3,877	21,745	38,809	3,131	7,003	10,582	6,561	11,701
September . . . . .	139,140	61,672	6,398	1,636	27,103	4,797	21,738	38,209	3,218	6,212	10,923	5,979	12,928
October . . . . .	139,402	59,688	6,540	1,412	26,123	4,120	21,493	40,125	2,295	5,222	11,201	6,422	14,449
November . . . . .	138,729	60,232	6,181	1,467	26,088	4,556	21,940	38,344	3,217	5,888	11,412	6,594	13,042
December . . . . .	138,510	59,643	6,368	1,367	26,388	4,189	21,331	40,402	3,211	6,014	10,846	6,317	12,078
1996: January . . . . .	140,056	62,748	6,381	1,350	26,983	4,553	23,481	39,444	3,554	5,352	10,556	5,469	12,933
February . . . . .	133,329	55,928	5,198	1,407	24,931	4,868	19,524	40,956	3,982	5,455	10,456	5,992	10,559
March . . . . .	137,257	60,264	5,142	1,560	27,506	4,783	21,273	39,527	3,126	5,811	10,737	5,916	11,876
April . . . . .	141,417	60,180	5,165	1,456	27,819	4,352	21,387	39,763	3,192	5,884	12,239	7,153	13,006
May <sup>f</sup> . . . . .	141,317	62,877	5,900	1,478	27,325	5,111	23,063	38,071	3,026	5,681	11,742	6,398	13,521
June <sup>f</sup> . . . . .	140,600	61,043	4,934	1,555	26,727	4,590	23,237	38,821	3,155	5,893	10,930	6,481	14,276
July <sup>p</sup> . . . . .	139,309	61,306	5,947	1,560	25,795	4,558	23,446	39,055	3,056	5,530	10,651	6,665	13,046
<b>PERCENT CHANGE</b>													
June 1996-													
July 1996 . . . . .	-1	(Z)	21	(Z)	-3	-1	1	1	-3	-6	-3	3	-9

NA Not available, but estimates are included in totals. <sup>p</sup>Preliminary. <sup>r</sup>Revised. Z Less than 0.5 percent.

<sup>1</sup>Includes farm nonresidential and other private categories, not shown separately. <sup>2</sup>Includes residential improvements, not shown separately. <sup>3</sup>Includes amusement and recreational buildings, bus and airline terminals, animal hospitals and shelters, etc. <sup>4</sup>Includes gas, electric, railroad, and petroleum pipelines, not shown separately. <sup>5</sup>Includes privately owned streets and bridges, parking areas, sewer and water facilities, parks and playgrounds, golf courses, airfields, etc. <sup>6</sup>Includes general administrative buildings, prisons, police and fire stations, courthouses, civic centers, passenger terminals, space facilities, postal facilities etc. <sup>7</sup>Includes open amusement and recreational facilities, power generating facilities, transit systems, airfields, open parking facilities, etc.



Table 5. Monthly Value of New Construction Put in Place—Seasonally Adjusted Annual Rate in 1992 Dollars

[Millions of dollars]

Period		Total new construction	Private construction																All other private <sup>5</sup>	
			Residential buildings						Nonresidential buildings									Public utilities <sup>4</sup>		
			Total <sup>1</sup>	Total <sup>2</sup>	New housing units				Total	Industrial	Office	Hotels, motels	Other commercial	Religious	Educational	Hospital and institutional	Miscellaneous <sup>3</sup>	Total		Telecommunications
					Total	1 unit	2 units or more													
1994:	July	493,273	369,558	220,358	155,809	143,540	12,269	110,839	26,123	19,579	3,459	36,194	3,588	4,512	11,774	5,610	(NA)	9,752	3,024	
	August	489,808	370,803	218,931	154,421	141,221	13,200	112,203	27,042	20,339	3,885	36,360	3,746	4,119	11,590	5,121	(NA)	10,399	2,920	
	September	491,319	370,724	219,185	154,457	139,195	15,262	112,898	27,800	21,166	3,942	36,310	3,412	4,042	10,692	5,535	(NA)	9,790	2,914	
	October	489,672	365,142	215,551	150,663	136,896	13,767	112,086	26,735	20,669	4,198	37,131	3,546	4,098	10,414	5,296	(NA)	9,806	2,773	
	November	489,846	370,368	215,455	150,144	135,546	14,599	116,667	30,933	21,921	4,694	35,243	3,372	4,464	10,723	5,319	(NA)	10,033	2,679	
	December	492,290	369,207	215,773	150,370	135,568	14,802	114,154	28,387	21,131	4,906	35,932	3,620	4,552	10,556	5,069	(NA)	10,662	2,596	
1995:	January	487,568	366,987	214,226	149,455	134,575	14,880	114,560	27,154	21,822	5,428	36,489	3,517	4,594	10,241	5,314	(NA)	10,541	2,558	
	February	489,591	370,159	212,264	147,783	132,722	15,061	119,181	29,035	21,986	5,608	38,305	3,751	4,861	10,699	4,935	(NA)	9,782	2,685	
	March	491,902	368,798	209,853	144,546	128,378	16,169	120,890	28,949	22,615	6,804	39,368	3,534	4,692	9,940	4,987	(NA)	10,496	2,774	
	April	492,453	366,208	206,544	140,980	125,590	15,389	121,767	30,934	23,052	5,061	38,250	3,963	5,023	10,424	5,060	(NA)	11,036	2,880	
	May	484,860	361,010	204,828	138,827	123,440	15,388	119,978	30,235	24,408	5,682	35,867	4,016	4,735	10,108	4,927	(NA)	9,281	2,843	
	June	485,888	360,944	203,239	137,088	122,274	14,814	120,504	29,343	23,422	5,697	38,498	4,063	5,109	9,155	5,217	(NA)	10,307	2,750	
	July	484,230	362,250	202,916	138,876	123,337	15,539	123,052	29,544	25,340	6,070	38,110	4,131	5,211	9,680	4,966	(NA)	10,584	2,591	
	August	480,946	358,092	204,772	141,295	125,443	15,851	118,838	28,401	23,363	6,164	37,271	3,952	5,465	9,513	4,708	(NA)	9,144	2,491	
	September	486,064	361,289	206,663	142,878	126,935	15,944	119,816	28,824	22,225	6,547	37,918	3,938	5,024	9,978	5,362	(NA)	9,512	2,430	
	October	484,948	360,232	206,915	144,151	128,369	15,782	118,718	27,856	21,222	6,502	38,404	4,007	4,600	10,079	6,047	(NA)	9,301	2,374	
	November	485,048	361,032	209,005	144,975	128,918	16,058	119,532	28,422	20,592	8,614	37,576	3,798	4,786	9,963	5,781	(NA)	9,176	2,363	
	December	490,672	366,873	212,133	146,725	129,392	17,333	121,660	28,391	21,090	9,291	37,868	3,622	4,525	10,531	6,343	(NA)	9,196	2,358	
1996:	January	492,890	367,894	211,214	147,376	130,446	16,930	121,819	28,808	19,747	9,165	39,185	3,745	4,530	10,167	6,472	(NA)	10,086	2,286	
	February	479,798	360,869	207,623	145,266	128,543	16,723	119,499	27,274	19,622	9,027	39,245	3,728	4,647	9,407	6,549	(NA)	9,264	2,218	
	March	489,906	368,221	214,369	151,544	134,091	17,453	118,641	27,026	19,282	9,118	38,583	3,652	5,056	9,261	6,663	(NA)	9,292	2,190	
	April	496,790	371,725	216,130	156,104	136,484	19,620	119,641	26,758	19,538	9,113	40,025	3,870	4,696	9,022	6,621	(NA)	10,129	2,079	
	May <sup>f</sup>	489,476	365,049	215,410	155,039	136,599	18,440	114,590	23,975	20,219	8,783	37,314	3,828	4,747	9,563	6,161	(NA)	9,726	1,920	
	June <sup>f</sup>	490,755	367,461	213,994	153,965	135,929	18,036	120,008	25,084	23,190	9,665	37,185	3,960	4,963	9,652	6,310	(NA)	8,737	1,909	
	July <sup>p</sup>	481,342	359,939	210,701	150,896	135,177	15,719	115,075	24,190	21,447	9,162	35,956	3,959	4,779	9,432	6,149	(NA)	(NA)	1,981	
<b>PERCENT CHANGE</b>																				
June 1996-	July 1996	-2	-2	-2	-2	-1	-13	-4	-4	-8	-5	-3	(Z)	-4	-2	-3	(NA)	(NA)	4	

See footnotes at end of table.

Table 5. Monthly Value of New Construction Put in Place—Seasonally Adjusted Annual Rate in 1992 Dollars—Con.

[Millions of dollars]

Period	Public construction												
	Total	Buildings						Highways and streets	Military facilities	Conservation and development	Sewer systems	Water supply facilities	Miscellaneous public <sup>7</sup>
		Total	Housing and redevelopment	Industrial	Educational	Hospital	Other public buildings <sup>6</sup>						
1994: July . . . . .	123,715	48,911	4,410	1,185	21,169	3,936	18,212	40,248	2,208	5,796	9,767	5,232	11,552
August . . . . .	119,005	48,687	4,554	1,324	21,058	3,319	18,433	36,688	2,302	5,364	9,491	4,830	11,643
September . . . . .	120,595	48,770	4,681	1,400	21,168	3,537	17,983	36,104	2,184	7,104	10,201	5,694	10,538
October . . . . .	124,530	52,818	5,446	1,404	23,285	3,407	19,275	36,319	2,159	6,830	9,298	5,788	11,320
November . . . . .	119,478	51,205	4,808	1,403	21,931	3,548	19,515	34,815	2,078	5,993	9,607	4,824	10,956
December . . . . .	123,082	53,045	5,242	1,357	21,501	3,881	21,064	33,994	2,537	7,275	10,596	4,891	10,744
1995: January . . . . .	120,581	51,940	5,117	1,464	21,576	3,704	20,079	33,813	2,595	6,195	9,888	5,521	10,631
February . . . . .	119,433	52,420	4,990	1,538	22,351	3,874	19,667	32,224	2,492	6,420	9,628	6,009	10,240
March . . . . .	123,105	53,191	5,115	1,449	22,737	3,889	20,000	35,159	2,887	6,616	9,668	4,873	10,711
April . . . . .	126,245	54,297	5,406	1,408	23,026	4,089	20,367	34,709	2,666	6,100	9,364	5,061	14,048
May . . . . .	123,850	54,480	5,327	1,347	22,549	4,248	21,010	34,396	2,683	5,527	9,636	4,794	12,333
June . . . . .	124,944	55,069	5,607	1,206	23,229	3,900	21,127	34,258	2,704	5,786	10,767	5,031	11,329
July . . . . .	121,979	53,027	5,494	1,274	22,830	3,861	19,568	34,952	2,845	5,802	9,566	5,417	10,371
August . . . . .	122,854	52,220	5,558	1,338	22,448	3,461	19,415	35,410	2,826	6,344	9,585	5,832	10,637
September . . . . .	124,775	54,696	5,564	1,454	24,091	4,264	19,323	34,704	2,892	5,611	9,867	5,296	11,710
October . . . . .	124,716	52,804	5,687	1,252	23,158	3,653	19,054	36,279	2,054	4,717	10,119	5,679	13,064
November . . . . .	124,016	53,344	5,384	1,302	23,148	4,042	19,468	34,575	2,878	5,319	10,309	5,820	11,770
December . . . . .	123,799	52,829	5,557	1,213	23,414	3,717	18,927	36,398	2,872	5,433	9,797	5,570	10,900
1996: January . . . . .	124,996	55,529	5,558	1,197	23,921	4,037	20,817	35,471	3,173	4,830	9,527	4,814	11,651
February . . . . .	118,929	49,458	4,524	1,246	22,082	4,312	17,294	36,798	3,552	4,919	9,428	5,270	9,504
March . . . . .	121,685	53,177	4,483	1,378	24,299	4,225	18,792	35,104	2,769	5,211	9,630	5,190	10,603
April . . . . .	125,065	53,067	4,511	1,285	24,554	3,841	18,876	35,188	2,820	5,253	10,928	6,247	11,561
May <sup>f</sup> . . . . .	124,428	55,207	5,140	1,299	24,012	4,491	20,266	33,543	2,662	5,050	10,437	5,564	11,965
June <sup>f</sup> . . . . .	123,294	53,368	4,279	1,360	23,383	4,016	20,330	34,054	2,765	5,219	9,681	5,616	12,589
July <sup>p</sup> . . . . .	121,404	53,274	5,136	1,357	22,430	3,963	20,388	34,049	2,662	4,868	9,376	5,741	11,434
<b>PERCENT CHANGE</b>													
June 1996-													
July 1996 . . . . .	-2	(Z)	20	(Z)	-4	-1	(Z)	(Z)	-4	-7	-3	2	-9

NA Not available, but estimates are included in totals. <sup>p</sup>Preliminary. <sup>r</sup>Revised. Z Less than 0.5 percent.

<sup>1</sup>Includes farm nonresidential and other private categories, not shown separately. <sup>2</sup>Includes residential improvements, not shown separately. <sup>3</sup>Includes amusement and recreational buildings, bus and airline terminals, animal hospitals and shelters, etc. <sup>4</sup>Includes gas, electric, railroad, and petroleum pipelines, not shown separately. <sup>5</sup>Includes privately owned streets and bridges, parking areas, sewer and water facilities, parks and playgrounds, golf courses, airfields, etc. <sup>6</sup>Includes general administrative buildings, prisons, police and fire stations, courthouses, civic centers, passenger terminals, space facilities, postal facilities etc. <sup>7</sup>Includes open amusement and recreational facilities, power generating facilities, transit systems, airfields, open parking facilities, etc.

Table 6. Monthly Value of New Construction Put in Place—Not Seasonally Adjusted in 1992 Dollars

[Millions of dollars]

Period	Total new construction	Private construction																All other private <sup>5</sup>
		Total <sup>1</sup>	Residential buildings					Nonresidential buildings								Public utilities <sup>4</sup>		
			Total <sup>2</sup>	New housing units			Total	Industrial	Office	Hotels, motels	Other commercial	Religious	Educational	Hospital and institutional	Miscellaneous <sup>3</sup>	Total	Telecommunications	
				Total	1 unit	2 units or more												
<b>YEAR TO DATE</b>																		
July 1995	270,319	203,801	114,825	78,602	69,929	8,674	67,761	16,641	13,461	3,360	20,803	2,101	2,820	5,733	2,841	(NA)	5,673	1,533
July 1996	271,936	205,456	118,633	84,757	74,755	10,001	67,126	14,844	11,821	5,376	21,135	2,100	2,756	5,454	3,641	(NA)	(NA)	1,167
Percent change	1	1	3	8	7	15	-1	-11	-12	60	2	(Z)	-2	-5	28	(NA)	(NA)	-24
<b>MONTHLY DATA</b>																		
1994: July	45,487	33,640	20,888	14,471	13,361	1,109	9,479	2,196	1,614	296	3,212	292	441	951	478	(NA)	790	274
August	47,521	34,843	21,259	14,631	13,404	1,227	10,062	2,326	1,773	329	3,415	351	416	997	456	(NA)	970	253
September	46,709	34,139	20,498	14,516	13,177	1,339	10,254	2,433	1,841	343	3,528	326	369	918	496	(NA)	866	266
October	45,040	33,391	20,140	13,954	12,743	1,212	9,951	2,364	1,716	345	3,459	335	346	906	479	(NA)	856	254
November	42,320	32,159	18,859	13,395	12,154	1,241	9,977	2,601	1,861	384	3,075	308	349	929	469	(NA)	913	239
December	37,414	28,444	16,015	11,393	10,224	1,169	9,245	2,460	1,661	392	2,842	295	329	865	401	(NA)	945	203
1995: January	32,832	25,243	14,144	10,317	9,252	1,065	8,384	2,025	1,693	411	2,493	256	315	810	381	(NA)	713	192
February	31,973	24,641	13,152	9,492	8,417	1,076	8,718	2,178	1,717	432	2,608	267	328	836	352	(NA)	671	186
March	36,169	27,813	15,207	10,880	9,639	1,241	9,524	2,316	1,879	562	2,943	267	350	815	392	(NA)	860	207
April	38,534	29,311	16,379	11,107	9,869	1,238	9,819	2,529	1,938	430	2,942	306	389	850	435	(NA)	830	225
May	41,880	31,262	17,814	11,714	10,379	1,335	10,291	2,585	2,170	501	3,028	333	408	856	410	(NA)	798	244
June	44,465	32,708	18,915	12,245	10,923	1,322	10,510	2,516	1,995	512	3,423	329	505	778	452	(NA)	934	244
July	44,466	32,823	19,214	12,847	11,450	1,397	10,515	2,492	2,069	512	3,366	343	525	788	419	(NA)	867	235
August	46,571	33,613	19,920	13,398	11,917	1,481	10,614	2,433	2,025	532	3,460	368	559	813	424	(NA)	870	214
September	45,892	33,093	19,331	13,437	12,038	1,399	10,743	2,517	1,906	543	3,640	370	443	851	472	(NA)	812	219
October	44,979	33,082	19,339	13,355	11,960	1,395	10,664	2,458	1,807	560	3,610	387	387	889	564	(NA)	843	218
November	41,879	31,295	18,263	12,906	11,549	1,357	10,212	2,392	1,725	707	3,294	346	386	856	506	(NA)	830	212
December	37,027	28,203	15,714	11,092	9,715	1,377	9,840	2,461	1,678	736	3,001	289	317	855	503	(NA)	769	187
1996: January	33,249	25,329	13,915	10,144	8,925	1,219	8,936	2,149	1,514	696	2,720	278	309	809	462	(NA)	697	173
February	32,158	24,777	13,214	9,676	8,441	1,235	9,083	2,118	1,563	750	2,790	277	334	759	493	(NA)	668	159
March	35,624	27,624	15,574	11,412	10,068	1,344	9,253	2,169	1,560	755	2,858	267	366	745	534	(NA)	718	162
April	39,287	29,952	17,158	12,331	10,759	1,571	9,766	2,165	1,653	788	3,145	314	368	756	576	(NA)	831	163
May <sup>f</sup>	42,252	31,565	18,699	13,120	11,520	1,600	9,815	2,050	1,786	771	3,181	310	412	796	509	(NA)	827	165
June <sup>f</sup>	44,448	33,171	19,954	13,901	12,290	1,611	10,309	2,157	1,929	833	3,241	313	483	808	545	(NA)	745	168
July <sup>p</sup>	44,918	33,038	20,119	14,173	12,752	1,421	9,964	2,036	1,816	783	3,200	341	484	781	522	(NA)	(NA)	177
<b>PERCENT CHANGE</b>																		
June 1996-																		
July 1996	1	(Z)	1	2	4	-12	-3	-6	-6	-6	-1	9	(Z)	-3	-4	(NA)	(NA)	5

See footnotes at end of table.

Table 6. Monthly Value of New Construction Put in Place—Not Seasonally Adjusted in 1992 Dollars—Con.

[Millions of dollars]

Period	Public construction												
	Total	Buildings						Highways and streets	Military facilities	Conservation and development	Sewer systems	Water supply facilities	Miscellaneous public <sup>7</sup>
		Total	Housing and redevelopment	Industrial	Educational	Hospital	Other public buildings <sup>6</sup>						
<b>YEAR TO DATE</b>													
July 1995.....	66,517	30,194	3,028	794	12,633	2,246	11,493	17,035	1,521	3,333	5,341	2,895	6,196
July 1996.....	66,479	30,222	2,764	755	13,166	2,375	11,162	17,142	1,644	2,814	5,382	3,047	6,227
Percent change.....	(Z)	(Z)	-9	-5	4	6	-3	1	8	-16	1	5	1
<b>MONTHLY DATA</b>													
1994: July.....	11,847	4,490	377	100	2,150	332	1,532	4,286	194	508	846	472	1,048
August.....	12,678	4,730	382	111	2,316	282	1,639	4,675	196	520	921	447	1,190
September.....	12,570	4,549	415	153	2,012	318	1,652	4,317	241	866	991	515	1,090
October.....	11,648	4,457	463	102	1,965	288	1,638	4,116	142	463	884	563	1,023
November.....	10,161	4,238	418	108	1,743	299	1,670	3,032	182	483	861	425	941
December.....	8,970	4,134	427	114	1,575	325	1,692	2,062	225	556	802	382	809
1995: January.....	7,589	3,760	396	112	1,483	286	1,482	1,445	202	424	681	385	691
February.....	7,332	3,730	375	113	1,505	297	1,439	1,305	163	439	639	387	670
March.....	8,355	4,020	406	123	1,618	311	1,562	1,714	259	518	728	353	763
April.....	9,223	4,247	440	117	1,700	336	1,654	2,149	204	463	717	393	1,050
May.....	10,618	4,564	445	113	1,840	352	1,815	3,090	224	470	800	417	1,051
June.....	11,757	5,017	508	106	2,170	338	1,895	3,540	238	520	952	457	1,034
July.....	11,643	4,856	458	110	2,317	326	1,646	3,792	231	499	824	503	937
August.....	12,958	5,123	482	109	2,498	287	1,746	4,497	236	591	928	538	1,043
September.....	12,798	5,046	490	160	2,245	398	1,752	4,092	324	689	957	472	1,218
October.....	11,897	4,560	492	87	1,989	315	1,676	4,148	140	339	955	547	1,208
November.....	10,585	4,423	459	104	1,856	332	1,672	3,028	238	432	927	526	1,010
December.....	8,824	4,028	445	98	1,682	310	1,492	2,129	259	413	750	429	816
1996: January.....	7,920	3,996	425	93	1,633	315	1,530	1,543	248	344	675	335	779
February.....	7,381	3,664	358	95	1,551	335	1,325	1,530	238	341	628	350	630
March.....	8,000	3,951	354	114	1,705	339	1,439	1,641	254	386	690	365	712
April.....	9,334	4,214	367	108	1,856	323	1,560	2,252	223	423	826	487	909
May <sup>f</sup> .....	10,687	4,691	443	114	1,989	369	1,776	2,957	229	437	878	479	1,017
June <sup>f</sup> .....	11,277	4,787	380	116	2,157	353	1,781	3,386	230	439	854	499	1,083
July <sup>p</sup> .....	11,880	4,919	437	115	2,275	341	1,751	3,833	222	444	831	532	1,097
<b>PERCENT CHANGE</b>													
June 1996- July 1996.....	5	3	15	-1	5	-3	-2	13	-3	1	-3	7	1

NA Not available, but estimates are included in totals. <sup>p</sup>Preliminary. <sup>r</sup>Revised. <sup>Z</sup> Less than 0.5 percent.

<sup>1</sup>Includes farm nonresidential and other private categories, not shown separately. <sup>2</sup>Includes residential improvements, not shown separately. <sup>3</sup>Includes amusement and recreational buildings, bus and airline terminals, animal hospitals and shelters, etc. <sup>4</sup>Includes gas, electric, railroad, and petroleum pipelines, not shown separately. <sup>5</sup>Includes privately owned streets and bridges, parking areas, sewer and water facilities, parks and playgrounds, golf courses, airfields, etc. <sup>6</sup>Includes general administrative buildings, prisons, police and fire stations, courthouses, civic centers, passenger terminals, space facilities, postal facilities etc. <sup>7</sup>Includes open amusement and recreational facilities, power generating facilities, transit systems, airfields, open parking facilities, etc.

**Table 7. Monthly Value of New Public Construction Put in Place—Not Seasonally Adjusted in Current Dollars**

[Millions of dollars]

Period		State and locally owned public construction										
		Total State and local	Buildings					Highways and streets	Conservation and development	Sewer systems	Water supply facilities	Miscellaneous construction <sup>2</sup>
			Total	Housing and redevelopment	Educational	Hospital	Other buildings <sup>1</sup>					
1994:	July	11,368	4,462	375	2,318	265	1,503	4,383	212	898	518	895
	August	12,243	4,763	384	2,508	245	1,626	4,811	189	981	492	1,007
	September	11,706	4,455	420	2,185	269	1,580	4,454	250	1,057	567	924
	October	11,402	4,439	478	2,149	257	1,556	4,277	179	948	624	936
	November	9,743	4,199	436	1,913	249	1,600	3,161	175	925	473	811
	December	8,351	4,028	410	1,739	283	1,596	2,155	208	864	427	669
1995:	January	7,131	3,721	426	1,645	239	1,412	1,524	167	741	430	549
	February	6,940	3,680	390	1,667	247	1,378	1,380	170	698	433	579
	March	7,771	3,935	420	1,792	260	1,463	1,818	193	796	395	634
	April	8,904	4,264	472	1,887	292	1,613	2,287	200	787	440	927
	May	10,305	4,502	458	2,039	277	1,727	3,298	220	878	466	941
	June	11,649	5,089	528	2,419	286	1,855	3,819	221	1,057	514	949
	July	11,628	4,979	474	2,591	289	1,624	4,126	166	915	568	875
	August	12,971	5,251	500	2,796	243	1,713	4,887	209	1,025	606	994
	September	12,264	4,974	499	2,520	324	1,631	4,466	162	1,060	533	1,070
	October	12,384	4,786	510	2,242	302	1,733	4,551	171	1,058	619	1,199
	November	10,567	4,489	443	2,091	286	1,669	3,329	173	1,026	596	954
	December	8,636	4,071	457	1,892	261	1,460	2,343	161	830	487	745
1996:	January	7,689	4,026	438	1,841	285	1,463	1,702	129	748	380	705
	February	7,116	3,667	368	1,751	268	1,280	1,690	141	696	398	524
	March	7,764	3,974	361	1,930	271	1,412	1,832	147	770	417	626
	April	9,302	4,315	365	2,102	286	1,562	2,525	153	925	558	827
	May <sup>f</sup>	10,746	4,778	444	2,262	284	1,788	3,328	162	987	551	941
	June <sup>f</sup>	11,544	4,950	388	2,465	329	1,769	3,825	178	965	576	1,050
	July <sup>p</sup>	12,330	5,135	450	2,615	299	1,771	4,364	197	944	618	1,072
		Federally owned public construction										
		Total Federal	Buildings					Highways and streets	Military facilities	Conservation and development	Miscellaneous construction <sup>4</sup>	
			Total	Housing	Industrial	Educational	Hospital					Other buildings <sup>3</sup>
1994:	July	1,159	389	37	108	2	93	150	(NA)	205	327	202
	August	1,228	370	36	120	2	62	150	(NA)	208	365	245
	September	1,702	507	39	166	5	76	220	(NA)	256	673	225
	October	1,100	446	38	112	1	59	236	(NA)	152	318	148
	November	1,230	471	31	119	5	80	236	(NA)	196	344	190
	December	1,403	554	72	126	3	77	276	(NA)	243	391	194
1995:	January	1,181	458	22	125	1	79	232	(NA)	220	295	194
	February	1,108	465	36	125	3	83	219	(NA)	178	309	144
	March	1,393	529	40	136	1	85	267	(NA)	282	374	192
	April	1,225	461	27	130	1	81	223	(NA)	223	307	213
	May	1,355	580	47	125	5	113	290	(NA)	246	297	203
	June	1,361	521	50	118	2	90	260	(NA)	263	356	187
	July	1,303	465	48	123	1	75	218	(NA)	256	389	159
	August	1,400	499	53	123	2	79	243	(NA)	262	444	154
	September	1,991	715	65	180	6	124	340	(NA)	361	600	275
	October	902	368	56	99	2	54	158	(NA)	157	204	136
	November	1,272	506	84	117	-	89	216	(NA)	267	306	165
	December	1,243	477	53	110	4	89	222	(NA)	290	297	159
1996:	January	1,194	490	49	105	1	71	263	(NA)	278	253	160
	February	1,170	477	43	107	-	110	216	(NA)	267	237	177
	March	1,263	504	45	129	1	113	217	(NA)	286	284	172
	April	1,253	464	56	122	1	80	206	(NA)	252	321	196
	May <sup>f</sup>	1,392	565	64	130	1	137	233	(NA)	261	329	208
	June <sup>f</sup>	1,316	525	50	132	1	75	267	(NA)	262	317	177
	July <sup>p</sup>	1,301	525	56	133	1	94	243	(NA)	255	308	180

- Represent zero or rounds to zero. NA Not available, but estimates are included in totals. <sup>f</sup>Preliminary. <sup>r</sup>Revised.

<sup>1</sup>Includes general administrative buildings, prisons, police and fire stations, courthouses, passenger terminals, civic centers, etc. <sup>2</sup>Includes open amusement and recreational facilities, power generating facilities, transit systems, airfields, open parking facilities, etc. <sup>3</sup>Includes federal office buildings, prisons, courthouses, space facilities, postal facilities, etc. <sup>4</sup>Includes federal airport facilities, fish and wildlife preservation facilities, VA cemeteries, etc.

**Table 8. Monthly Value of New Public Construction Put in Place—Seasonally Adjusted Annual Rate in Current Dollars**

[Millions of dollars]

Period		State and locally owned public construction										
		Total State and local	Buildings					Highways and streets	Conservation and development	Sewer systems	Water supply facilities	Miscellaneous construction <sup>2</sup>
			Total	Housing and redevelopment	Educational	Hospital	Other buildings <sup>1</sup>					
1994:	July	117,508	48,237	4,387	22,823	3,150	17,878	41,158	2,302	10,363	5,740	9,708
	August	113,040	48,423	4,574	22,804	2,862	18,183	37,760	1,805	10,108	5,317	9,626
	September	114,905	48,540	4,816	23,004	3,151	17,568	37,242	2,553	10,874	6,269	9,428
	October	117,079	51,745	5,542	25,457	2,916	17,830	37,736	1,800	9,967	6,407	9,424
	November	113,454	50,294	4,978	24,059	2,863	18,394	36,293	1,985	10,328	5,359	9,195
	December	116,318	52,191	5,061	23,742	3,380	20,008	35,517	2,780	11,422	5,459	8,948
1995:	January	115,713	51,753	5,500	23,920	3,081	19,252	35,649	2,650	10,748	6,178	8,736
	February	114,884	51,913	5,167	24,750	3,167	18,828	34,062	2,652	10,514	6,724	9,019
	March	118,307	52,809	5,320	25,185	3,306	18,999	37,292	2,842	10,577	5,452	9,335
	April	122,882	54,837	5,807	25,552	3,561	19,917	36,938	2,698	10,272	5,653	12,484
	May	119,959	53,708	5,481	24,998	3,362	19,867	36,710	2,577	10,581	5,351	11,032
	June	122,971	55,640	5,808	25,897	3,324	20,612	36,959	2,413	11,951	5,660	10,348
	July	120,171	54,060	5,704	25,530	3,451	19,375	38,029	1,807	10,618	6,115	9,542
	August	120,251	52,522	5,721	25,116	2,914	18,772	38,479	2,105	10,582	6,561	10,003
	September	122,430	55,184	5,813	27,049	3,670	18,652	37,870	1,642	10,923	5,979	10,832
	October	125,686	54,421	5,741	26,094	3,351	19,234	39,801	1,726	11,201	6,422	12,114
	November	122,829	53,894	5,129	26,086	3,442	19,237	38,013	1,984	11,412	6,594	10,932
	December	123,111	53,729	5,710	26,344	3,092	18,583	40,043	2,163	10,846	6,317	10,014
1996:	January	124,369	56,466	5,750	26,968	3,644	20,104	39,122	1,970	10,556	5,469	10,786
	February	117,073	49,677	4,629	24,928	3,423	16,697	40,644	2,188	10,456	5,992	8,116
	March	122,020	54,155	4,594	27,499	3,420	18,643	39,185	2,286	10,737	5,916	9,740
	April	126,053	54,636	4,499	27,805	3,399	18,932	39,450	1,965	12,239	7,153	10,610
	May <sup>f</sup>	125,401	56,460	5,176	27,311	3,560	20,413	37,742	1,917	11,742	6,398	11,141
	June <sup>e</sup>	124,948	54,875	4,342	26,717	3,715	20,101	38,469	2,060	10,930	6,481	12,132
	July <sup>p</sup>	124,215	55,127	5,294	25,787	3,454	20,592	38,762	2,015	10,651	6,665	10,995
		Federally owned public construction										
		Total Federal	Buildings					Highways and streets	Military facilities	Conservation and development	Miscellaneous construction <sup>4</sup>	
			Total	Housing	Industrial	Educational	Hospital					Other buildings <sup>3</sup>
1994:	July	13,490	4,600	433	1,278	19	1,097	1,773	(NA)	2,330	3,847	2,375
	August	13,712	4,418	427	1,435	23	735	1,798	(NA)	2,442	3,908	2,623
	September	14,018	4,650	361	1,525	48	701	2,015	(NA)	2,326	5,020	1,680
	October	16,876	6,141	519	1,536	17	811	3,257	(NA)	2,312	5,522	2,576
	November	15,616	6,127	407	1,543	65	1,040	3,072	(NA)	2,235	4,458	2,462
	December	17,264	6,598	857	1,501	38	912	3,289	(NA)	2,742	5,063	2,515
1995:	January	15,888	5,966	292	1,623	8	1,027	3,016	(NA)	2,818	4,084	2,692
	February	15,761	6,341	487	1,706	37	1,129	2,982	(NA)	2,711	4,358	2,030
	March	16,377	6,254	475	1,606	8	1,004	3,161	(NA)	3,144	4,396	2,254
	April	15,579	5,562	324	1,563	7	978	2,690	(NA)	2,911	3,994	2,773
	May	16,094	6,947	565	1,497	54	1,357	3,474	(NA)	2,935	3,492	2,386
	June	15,375	5,934	568	1,346	26	1,029	2,965	(NA)	2,980	4,009	2,103
	July	15,388	5,392	559	1,426	16	870	2,522	(NA)	3,152	4,633	1,897
	August	16,162	6,104	643	1,498	26	963	2,974	(NA)	3,131	4,898	1,698
	September	16,711	6,487	585	1,636	54	1,126	3,086	(NA)	3,218	4,570	2,095
	October	13,715	5,267	799	1,412	29	769	2,258	(NA)	2,295	3,496	2,335
	November	15,901	6,338	1,052	1,467	3	1,114	2,703	(NA)	3,217	3,904	2,110
	December	15,399	5,914	658	1,367	43	1,097	2,748	(NA)	3,211	3,851	2,064
1996:	January	15,687	6,282	631	1,350	14	910	3,377	(NA)	3,554	3,382	2,147
	February	16,256	6,252	569	1,407	3	1,445	2,828	(NA)	3,982	3,267	2,443
	March	15,237	6,109	549	1,560	7	1,363	2,630	(NA)	3,126	3,524	2,136
	April	15,364	5,544	666	1,456	14	953	2,455	(NA)	3,192	3,919	2,396
	May <sup>f</sup>	15,916	6,417	724	1,478	14	1,551	2,650	(NA)	3,026	3,765	2,379
	June <sup>e</sup>	15,652	6,168	592	1,555	11	875	3,136	(NA)	3,155	3,832	2,145
	July <sup>p</sup>	15,094	6,179	653	1,560	8	1,104	2,854	(NA)	3,056	3,514	2,051

NA Not available, but estimates are included in totals. <sup>p</sup>Preliminary. <sup>f</sup>Revised.

<sup>1</sup>Includes general administrative buildings, prisons, police and fire stations, courthouses, passenger terminals, civic centers, etc. <sup>2</sup>Includes open amusement and recreational facilities, power generating facilities, transit systems, airfields, open parking facilities, etc. <sup>3</sup>Includes federal office buildings, prisons, courthouses, space facilities, postal facilities, etc. <sup>4</sup>Includes federal airport facilities, fish and wildlife preservation facilities, VA cemeteries, etc.

**Table 9. Monthly Value of New Public Construction Put in Place—Seasonally Adjusted Annual Rate in 1992 Dollars**

[Millions of dollars]

Period	State and locally owned public construction										
	Total State and local	Buildings					Highways and streets	Conservation and development	Sewer systems	Water supply facilities	Miscellaneous construction <sup>2</sup>
		Total	Housing and redevelopment	Educational	Hospital	Other buildings <sup>1</sup>					
1994: July	111,024	44,653	4,014	21,152	2,919	16,569	39,920	2,170	9,767	5,232	9,282
August	106,161	44,617	4,165	21,037	2,641	16,774	36,378	1,695	9,491	4,830	9,150
September	107,514	44,505	4,354	21,124	2,893	16,133	35,775	2,395	10,201	5,694	8,945
October	108,875	47,213	4,979	23,270	2,665	16,298	36,007	1,679	9,298	5,788	8,890
November	105,059	45,641	4,445	21,872	2,603	16,722	34,499	1,846	9,607	4,824	8,642
December	107,214	47,096	4,483	21,467	3,056	18,090	33,665	2,579	10,596	4,891	8,387
1995: January	106,043	46,565	4,859	21,569	2,778	17,360	33,505	2,438	9,888	5,521	8,126
February	105,059	46,712	4,561	22,317	2,856	16,978	31,923	2,429	9,628	6,009	8,358
March	108,174	47,556	4,696	22,730	2,984	17,147	34,853	2,598	9,668	4,873	8,628
April	112,064	49,292	5,121	23,020	3,208	17,943	34,393	2,459	9,364	5,061	11,495
May	109,241	48,238	4,829	22,500	3,026	17,882	34,086	2,347	9,636	4,794	10,140
June	111,087	49,761	5,108	23,205	2,978	18,470	33,939	2,174	10,767	5,031	9,416
July	108,145	48,217	5,003	22,815	3,084	17,315	34,667	1,628	9,566	5,417	8,651
August	108,309	46,783	4,996	22,425	2,602	16,760	35,108	1,907	9,585	5,832	9,093
September	109,794	48,940	5,054	24,044	3,262	16,580	34,396	1,483	9,867	5,296	9,812
October	112,444	48,148	4,992	23,133	2,971	17,052	35,987	1,559	10,119	5,679	10,953
November	109,801	47,737	4,468	23,146	3,054	17,069	34,277	1,792	10,309	5,820	9,866
December	110,025	47,590	4,983	23,376	2,743	16,489	36,075	1,954	9,797	5,570	9,038
1996: January	110,988	49,970	5,008	23,908	3,230	17,823	35,182	1,778	9,527	4,814	9,717
February	104,423	43,929	4,029	22,080	3,031	14,789	36,517	1,973	9,428	5,270	7,305
March	108,154	47,787	4,005	24,292	3,021	16,469	34,800	2,051	9,630	5,190	8,696
April	111,452	48,181	3,929	24,541	3,000	16,710	34,912	1,754	10,928	6,247	9,431
May <sup>f</sup>	110,391	49,574	4,509	24,000	3,128	17,937	33,253	1,704	10,437	5,564	9,859
June <sup>f</sup>	109,543	47,976	3,766	23,374	3,251	17,586	33,745	1,825	9,681	5,616	10,698
July <sup>p</sup>	108,226	47,905	4,572	22,423	3,004	17,906	33,794	1,774	9,376	5,741	9,636
Period	Federally owned public construction										
	Total Federal	Buildings					Highways and streets	Military facilities	Conservation and development	Miscellaneous construction <sup>4</sup>	
		Total	Housing	Industrial	Educational	Hospital					Other buildings <sup>3</sup>
1994: July	12,691	4,258	396	1,185	18	1,017	1,643	(NA)	2,208	3,626	2,271
August	12,844	4,070	389	1,324	21	678	1,658	(NA)	2,302	3,669	2,493
September	13,081	4,265	326	1,400	44	644	1,851	(NA)	2,184	4,709	1,594
October	15,656	5,605	467	1,404	15	742	2,977	(NA)	2,159	5,151	2,430
November	14,419	5,564	363	1,403	59	946	2,793	(NA)	2,078	4,147	2,314
December	15,868	5,950	759	1,357	34	825	2,974	(NA)	2,537	4,696	2,357
1995: January	14,538	5,374	258	1,464	7	926	2,720	(NA)	2,595	3,757	2,505
February	14,373	5,708	430	1,538	33	1,018	2,689	(NA)	2,492	3,991	1,881
March	14,931	5,635	419	1,449	7	906	2,853	(NA)	2,887	4,018	2,083
April	14,181	5,004	285	1,408	7	881	2,423	(NA)	2,666	3,641	2,554
May	14,609	6,242	498	1,347	49	1,221	3,127	(NA)	2,683	3,180	2,193
June	13,858	5,308	499	1,206	23	922	2,657	(NA)	2,704	3,612	1,914
July	13,834	4,810	490	1,274	15	777	2,254	(NA)	2,845	4,174	1,720
August	14,545	5,437	562	1,338	23	860	2,655	(NA)	2,826	4,437	1,544
September	14,981	5,755	509	1,454	48	1,001	2,743	(NA)	2,892	4,128	1,898
October	12,271	4,656	695	1,252	25	682	2,002	(NA)	2,054	3,158	2,111
November	14,214	5,607	917	1,302	2	988	2,399	(NA)	2,878	3,527	1,904
December	13,775	5,238	574	1,213	38	973	2,439	(NA)	2,872	3,478	1,862
1996: January	14,009	5,560	550	1,197	13	807	2,994	(NA)	3,173	3,052	1,934
February	14,506	5,529	495	1,246	2	1,280	2,504	(NA)	3,552	2,946	2,199
March	13,531	5,390	478	1,378	6	1,204	2,323	(NA)	2,769	3,161	1,907
April	13,613	4,887	582	1,285	13	841	2,167	(NA)	2,820	3,499	2,130
May <sup>f</sup>	14,037	5,633	631	1,299	12	1,363	2,329	(NA)	2,662	3,346	2,106
June <sup>f</sup>	13,752	5,392	513	1,360	9	765	2,744	(NA)	2,765	3,394	1,891
July <sup>p</sup>	13,178	5,369	564	1,357	7	960	2,482	(NA)	2,662	3,094	1,798

NA Not available, but estimates are included in totals. <sup>f</sup>Preliminary. <sup>r</sup>Revised.

<sup>1</sup>Includes general administrative buildings, prisons, police and fire stations, courthouses, passenger terminals, civic centers, etc. <sup>2</sup>Includes open amusement and recreational facilities, power generating facilities, transit systems, airfields, open parking facilities, etc. <sup>3</sup>Includes federal office buildings, prisons, courthouses, space facilities, postal facilities, etc. <sup>4</sup>Includes federal airport facilities, fish and wildlife preservation facilities, VA cemeteries, etc.

Table 10. Monthly Value of New Public Construction Put in Place—Not Seasonally Adjusted in 1992 Dollars

[Millions of dollars]

Period		State and locally owned public construction										
		Total State and local	Buildings					Highways and streets	Conservation and development	Sewer systems	Water supply facilities	Miscellaneous construction <sup>2</sup>
			Total	Housing and redevelopment	Educational	Hospital	Other buildings <sup>1</sup>					
1994:	July	10,756	4,131	343	2,149	246	1,393	4,252	200	846	472	855
	August	11,527	4,389	350	2,314	226	1,500	4,635	177	921	447	957
	September	10,980	4,085	380	2,007	247	1,451	4,278	235	991	515	877
	October	10,629	4,050	429	1,964	235	1,422	4,081	167	884	563	883
	November	9,025	3,810	390	1,739	227	1,455	3,004	163	861	425	762
	December	7,681	3,635	364	1,572	256	1,443	2,042	193	802	382	627
1995:	January	6,509	3,347	376	1,483	215	1,273	1,432	153	681	385	511
	February	6,322	3,311	344	1,503	222	1,242	1,293	156	639	387	536
	March	7,085	3,543	371	1,618	234	1,320	1,699	176	728	353	586
	April	8,108	3,832	416	1,700	263	1,453	2,130	183	717	393	853
	May	9,388	4,043	404	1,836	250	1,554	3,062	200	800	417	865
	June	10,530	4,551	464	2,168	257	1,662	3,507	199	952	457	864
	July	10,472	4,442	416	2,316	259	1,452	3,761	149	824	503	793
	August	11,697	4,679	436	2,497	217	1,529	4,459	189	928	538	903
	September	11,012	4,412	434	2,240	288	1,449	4,056	146	957	472	969
	October	11,090	4,235	443	1,987	268	1,536	4,114	154	955	547	1,084
	November	9,447	3,976	386	1,856	254	1,481	3,002	156	927	526	861
	December	7,712	3,605	399	1,679	232	1,296	2,110	145	750	429	673
1996:	January	6,853	3,562	382	1,632	252	1,297	1,530	116	675	335	635
	February	6,337	3,243	320	1,551	237	1,134	1,519	127	628	350	471
	March	6,879	3,506	314	1,705	240	1,248	1,627	132	690	365	559
	April	8,224	3,805	319	1,855	253	1,379	2,234	137	826	487	735
	May <sup>f</sup>	9,460	4,195	387	1,988	249	1,571	2,932	144	878	479	832
	June <sup>f</sup>	10,120	4,327	336	2,156	287	1,548	3,355	158	854	499	926
	July <sup>p</sup>	10,743	4,462	389	2,274	260	1,540	3,805	173	831	532	940
		Federally owned public construction										
		Total Federal	Buildings					Highways and streets	Military facilities	Conservation and development	Miscellaneous construction <sup>4</sup>	
			Total	Housing	Industrial	Educational	Hospital					Other buildings <sup>3</sup>
1994:	July	1,090	360	33	100	1	86	139	(NA)	194	308	193
	August	1,151	341	33	111	2	57	139	(NA)	196	342	233
	September	1,590	465	36	153	5	70	202	(NA)	241	631	214
	October	1,020	407	34	102	1	54	216	(NA)	142	296	140
	November	1,136	428	28	108	5	73	215	(NA)	182	320	179
	December	1,289	500	64	114	3	69	250	(NA)	225	363	182
1995:	January	1,080	412	20	112	1	71	209	(NA)	202	271	181
	February	1,010	419	32	113	2	75	197	(NA)	163	283	133
	March	1,270	477	35	123	1	77	241	(NA)	259	342	177
	April	1,115	415	24	117	1	73	201	(NA)	204	280	196
	May	1,230	521	42	113	4	102	261	(NA)	224	270	186
	June	1,227	466	44	106	2	81	233	(NA)	238	320	170
	July	1,171	415	42	110	1	67	194	(NA)	231	350	144
	August	1,261	445	46	109	2	70	217	(NA)	236	402	140
	September	1,786	634	56	160	5	110	302	(NA)	324	542	249
	October	807	325	49	87	2	48	140	(NA)	140	184	123
	November	1,137	448	73	104	-	79	191	(NA)	238	276	149
	December	1,112	423	46	98	3	79	197	(NA)	259	268	143
1996:	January	1,066	433	43	93	1	63	233	(NA)	248	228	144
	February	1,044	422	38	95	-	98	191	(NA)	238	213	159
	March	1,121	445	39	114	1	99	192	(NA)	254	255	154
	April	1,110	409	49	108	1	70	181	(NA)	223	286	174
	May <sup>f</sup>	1,227	496	55	114	1	120	205	(NA)	229	293	184
	June <sup>f</sup>	1,156	459	44	116	1	65	234	(NA)	230	281	156
	July <sup>p</sup>	1,136	456	48	115	1	82	211	(NA)	222	271	158

- Represent zero or rounds to zero. NA Not available, but estimates are included in totals. <sup>p</sup>Preliminary. <sup>f</sup>Revised.

<sup>1</sup>Includes general administrative buildings, prisons, police and fire stations, courthouses, passenger terminals, civic centers, etc. <sup>2</sup>Includes open amusement and recreational facilities, power generating facilities, transit systems, airfields, open parking facilities, etc. <sup>3</sup>Includes federal office buildings, prisons, courthouses, space facilities, postal facilities, etc. <sup>4</sup>Includes federal airport facilities, fish and wildlife preservation facilities, VA cemeteries, etc.



Table 11. Indexes Used in Deriving Estimates of the Value of New Construction Put in Place in Constant Dollars

[1992 = 100]

Period	Bureau of the Census		Engineering News-Record		Bureau of the Census Houses Under Construction		Federal Highway Administration composite	Bureau of Reclamation	Turner Construction Company	Handy-Whitman public utility				C.A. Turner telephone plant
	Composite fixed-weighted	Implicit price deflator	Buildings	Construction	Fixed-weighted	Price deflator				Buildings	Electric	Gas	Water	
	Annual indexes													
1991.....	99.3	98.7	97.1	97.0	98.9	98.0	102.3	99	100	98	99	98	98	100
1992.....	100.0	100.0	100.0	100.0	100.0	100.0	100.0	100	100	100	100	100	100	100
1993.....	103.7	103.8	105.7	104.5	104.9	104.8	103.0	103	102	105	103	103	104	102
1994.....	108.0	108.1	109.8	108.5	109.7	109.5	109.5	106	105	112	107	109	109	103
1995.....	112.4	112.4	109.8	109.8	114.3	114.0	116.5	110	109	115	111	111	112	109
	Monthly indexes						Quarterly indexes			Semiannual indexes				
1995: January .....	111.6	111.4	109.8	109.2	113.9	113.2								
February .....	111.6	111.5	109.8	109.2	113.8	113.3	114.9	108	108					
March.....	111.6	111.4	109.5	109.0	113.7	113.3				114	109	111	112	104
April.....	111.7	111.6	109.4	109.0	113.7	113.4								
May.....	111.8	111.7	109.3	109.0	113.8	113.5	115.3	110	109					
June.....	112.3	112.2	109.2	109.0	114.0	113.7								
July.....	112.6	112.6	109.9	110.0	114.2	114.0								
August.....	112.8	112.7	110.1	110.5	114.7	114.5	114.1	111	109					
September .....	113.2	113.2	109.7	110.2	115.1	115.0				114	110	111	112	110
October.....	113.4	113.4	110.0	110.6	115.1	115.0								
November.....	113.3	113.3	110.5	110.7	114.8	114.8	118.7	111	110					
December.....	113.2	113.3	110.4	110.8	114.6	114.6								
1996: January .....	113.4	113.4	110.3	110.8	114.7	114.5								
February .....	113.5	113.5	110.5	111.0	114.8	114.6	122.3	111	111					
March.....	113.5	113.7	110.7	111.1	114.5	114.7				117	112	110	114	113
April.....	113.7	113.7	111.1	111.3	114.5	114.5								
May.....	<sup>r</sup> 114.1	<sup>r</sup> 114.1	111.5	111.8	<sup>r</sup> 114.9	<sup>r</sup> 114.8	(NA)	112	112					
June.....	<sup>r</sup> 114.3	<sup>r</sup> 114.6	112.2	112.3	<sup>r</sup> 114.9	<sup>r</sup> 115.3								
July.....	<sup>p</sup> 114.9	<sup>p</sup> 115.3	112.6	112.7	<sup>p</sup> 115.3	<sup>p</sup> 115.8								
August.....			113.6	113.4			(NA)	(NA)	(NA)					

NA Not Available. <sup>p</sup>Preliminary. <sup>r</sup>Revised.

Table 12. Factors Used to Seasonally Adjust Estimates of the Value of New Construction Put in Place

[Percent]

Type of construction	July 1996 <sup>p</sup>	June 1996 <sup>r</sup>	May 1996 <sup>r</sup>	Apr. 1996	Mar. 1996	Feb. 1996	Jan. 1996	Dec. 1995	Nov. 1995	Oct. 1995	Sep. 1995	July 1995
<b>PRIVATE CONSTRUCTION</b>												
Residential buildings:												
New housing units:												
1 unit .....	113.2	108.5	101.2	94.6	90.1	78.8	82.1	90.1	107.5	111.8	113.8	111.4
2 units or more .....	108.5	107.2	104.1	96.1	92.4	88.6	86.4	95.3	101.4	106.1	105.3	107.9
Nonresidential buildings:												
Industrial .....	101.0	103.2	102.6	97.1	96.3	93.2	89.5	104.0	101.0	105.9	104.8	101.2
Office .....	101.6	99.8	106.0	101.5	97.1	95.6	92.0	95.5	100.5	102.2	102.9	98.0
Hotels, motels .....	102.5	103.4	105.3	103.8	99.3	99.7	91.1	95.1	98.5	103.4	99.6	101.3
Other commercial .....	106.8	104.6	102.3	94.3	88.9	85.3	83.3	95.1	105.2	112.8	115.2	106.0
Religious .....	103.5	95.0	97.1	97.3	87.7	89.0	89.2	95.8	109.3	115.8	112.7	99.7
Educational .....	121.6	116.9	104.1	94.1	86.8	86.2	81.8	84.2	96.8	101.0	105.9	120.9
Hospital and institutional .....	99.4	100.4	99.9	100.6	96.5	96.8	95.5	97.4	103.1	105.9	102.4	97.7
Miscellaneous nonresidential .....	101.9	103.6	99.2	104.4	96.2	90.3	85.6	95.1	105.1	112.0	105.6	101.2
Telecommunications .....	105.1	102.3	102.0	98.4	92.7	86.5	82.9	100.4	108.5	108.7	102.5	98.3
All other private .....	107.3	105.9	103.4	93.9	88.9	86.0	90.6	95.0	107.6	110.0	108.4	109.0
<b>PUBLIC CONSTRUCTION</b>												
<b>State and local</b>												
Buildings:												
Housing and redevelopment .....	102.0	107.1	103.0	97.3	94.2	95.4	91.5	96.0	103.6	106.6	103.1	99.7
Educational .....	121.7	110.7	99.4	90.7	84.2	84.3	81.9	86.2	96.2	103.1	111.8	121.8
Hospital .....	103.8	106.1	95.7	101.1	95.2	94.0	93.7	101.3	99.6	108.1	105.9	100.6
Other buildings .....	103.2	105.6	105.1	99.0	90.9	92.0	87.3	94.3	104.1	108.1	104.9	100.6
Highways and streets .....	135.1	119.3	105.8	76.8	56.1	49.9	52.2	70.2	105.1	137.2	141.5	130.2
Conservation and development .....	117.0	103.9	101.3	93.5	77.1	77.4	78.4	89.3	104.7	118.8	118.5	110.0
Sewer systems .....	106.4	105.9	100.9	90.7	86.0	79.9	85.0	91.8	107.9	113.3	116.4	103.4
Water supply facilities .....	111.3	106.7	103.3	93.6	84.5	79.6	83.4	92.5	108.4	115.6	107.0	111.4
Miscellaneous construction .....	117.0	103.9	101.3	93.5	77.1	77.4	78.4	89.3	104.7	118.8	118.5	110.0
<b>Federal</b>												
Buildings:												
Housing and redevelopment .....	102.0	102.2	105.6	100.5	99.1	91.5	93.5	96.8	95.8	83.8	132.2	103.5
Industrial .....	102.0	102.2	105.6	100.5	99.1	91.5	93.5	96.8	95.8	83.8	132.2	103.5
Educational .....	102.0	102.2	105.6	100.5	99.1	91.5	93.5	96.8	95.8	83.8	132.2	103.5
Hospital .....	102.0	102.2	105.6	100.5	99.1	91.5	93.5	96.8	95.8	83.8	132.2	103.5
Other buildings .....	102.0	102.2	105.6	100.5	99.1	91.5	93.5	96.8	95.8	83.8	132.2	103.5
Military .....	100.2	99.6	103.3	94.8	109.9	80.5	93.9	108.3	99.4	81.9	134.6	97.3
Conservation and development .....	105.2	99.2	105.0	98.2	96.7	86.9	89.6	92.4	93.9	70.1	157.6	100.7
Miscellaneous construction .....	105.2	99.2	105.0	98.2	96.7	86.9	89.6	92.4	93.9	70.1	157.6	100.7

<sup>p</sup>Preliminary.   <sup>r</sup>Revised.

## Appendix.

# Reliability of the Estimates

The statistics on the value of new construction put in place result from direct measurement and indirect estimation. A series results from direct measurement when it is based on reports of the actual value of construction progress or construction expenditures obtained from a complete census or sample survey. All other series are developed by indirect estimation using related construction statistics.

On an annual basis, the estimates for series directly measured monthly, quarterly, or annually accounted for about 73 percent of total new construction in 1995 (private multifamily residential, private residential improvements, private nonresidential buildings, farm nonresidential construction, public utility construction, and virtually all of public construction). On a monthly basis, directly measured data are available for about 55 percent of the value-in-place estimates.

Some of the directly measured monthly construction value-in-place estimates are based on samples. Estimates from these samples may differ from statistics which would have been obtained from a complete census using the same schedules and procedures. An estimate based on a sample survey is subject to both sampling error and nonsampling error. The accuracy of a survey result is determined by the joint effects of these errors.

### MEASURE OF SAMPLING ERRORS

Sampling error reflects the fact that only a particular sample was surveyed rather than the entire population. Each sample selected for the monthly value-in-place survey is one of a large number of similar probability samples that, by chance, might have been selected under the same specifications. Estimates derived from the different samples would differ from one another. The standard error, or sampling error, of a survey estimate is a measure of the variation among the estimates from all possible samples and, thus, is a measure of the precision with which an estimate from a particular sample approximates the average from all possible samples.

Estimates of the standard errors for the monthly, year-to-date and annual estimates were computed from the sample data for selected statistics in this report. They are presented in the form of relative standard errors in the following table. The relative standard error equals the standard error divided by the estimated value to which it refers.

The sample estimate and an estimate of its standard error allow us to construct interval estimates with prescribed confidence that the interval includes the average result of all possible samples with the same size and design. A 90-percent confidence interval is defined to be from 1.6 standard errors below the estimate to 1.6 standard errors above the estimate. If all possible samples were selected and surveyed under essentially the same conditions and all the respective 90-percent confidence intervals were generated, then approximately nine-tenths of the intervals would include the average value of all sample estimates and approximately one-tenth would not include this estimate. For example, suppose table 3 of this report showed that the monthly VIP estimate for "total private nonresidential buildings" was \$10.0 billion in a particular month. According to the following table, the relative standard error of this estimate is 2 percent. Multiplying \$10.0 billion by .02, we obtain \$200 million as the standard error. To obtain a 90-percent confidence interval, multiply \$200 million by 1.6 and add and subtract the result from \$10.0 billion, yielding limits of \$9.68 billion and \$10.32 billion. The average value of the monthly VIP estimate for "total private nonresidential buildings" may or may not be contained in this computed interval, but one can say that the average is included in the constructed interval with a specified confidence of 90 percent.

The following table also presents coefficients necessary to compute standard errors for the month-to-month and year-to-date changes. To derive a specific standard error of a change, look up an appropriate coefficient ( $k_1$  or  $k_2$ ) for the change and apply the following formula:

$$\text{Standard error of a change} = k (100 + (\% \text{ change shown in tables 3 thru 6}))$$

Once the standard error is available, one can construct a 90-percent confidence interval of the change by multiplying the standard error by 1.6.

No standard errors are shown for farm nonresidential or public utilities because the estimates are based on a complete enumeration. An error for "all other private" is not provided because the statistics are derived by indirect estimation.

### NONSAMPLING ERRORS

As calculated for this report, the coefficient of variation estimates sampling variation but does not measure all nonsampling error in the data. Nonsampling error

consists of both a variance component and a bias component. Bias is the difference, averaged over all possible samples of the same size and design, between the estimate and the true value being estimated. Non-sampling errors are usually attributed to many possible sources: (1) coverage error failure to accurately represent all population units in the sample, (2) inability to obtain information about all sample cases, (3) response errors, possibly due to definitional difficulties or misreporting, (4) mistakes in recording or coding the data obtained, and (5) other errors of coverage, collection and nonresponse, response, processing, or imputing for missing or inconsistent data. These nonsampling errors also occur in complete censuses. Although no direct measures of these errors have been obtained, precautionary steps were taken in all phases of the collection, processing, and tabulation of the data to minimize their influence.

A major source of nonsampling error in the published estimates is due to the need to impute data for nonrespondents and for late and inconsistent reports. For preliminary value-in-place estimates, the average imputation rates for major components are as follows: private nonresidential construction, 43 percent; State and locally owned public construction, 26 percent; private residential construction of 2 units or more, 40 percent; and private residential improvements, 13 percent. Each of these imputation rates is not an explicit indication of the potential error in statistics, but the degree of uncertainty regarding the accuracy of the statistics increases as the percentage of imputation increases.

Other potential sources of bias are the upward adjustment of 28 percent made to the private nonresidential construction and the adjustment of the State and local owned public construction to the construction outlays from the Annual Survey of Government Finances in order to account for construction projects not included in their respective sampling frames. The adjustment for the nonresidential construction results from a coverage evaluation sample; hence, the estimated percentage adjustment is subject to sampling error and nonsampling errors associated with the evaluation study. In addition, the percentage was estimated from data collected during a limited time period; therefore, these adjustments do not reflect any recent changes in the proportion of projects not included in the frame.

For State and locally owned construction, construction outlays from the Survey of Government Finances are available only through Fiscal Year 1993. (Outlays are included if a government agency's fiscal year ending

date falls within July 1992 to June 1993 inclusive, and for three State agencies with fiscal years ending in August or September 1993.) As a result, the adjustment to the construction outlay levels of this survey must be projected ahead for four years from 1993 through April 1997. The relationship between the State and locally owned value-in-place and the capital outlays estimate changes from year to year so that revisions of 4 to 5 percent are expected in State and local construction and substantially larger revisions can be expected in the individual types of construction. In addition, because of the definition of fiscal year for the Survey of Government Finances, the reported capital outlays do not correspond to any 12 month period but result from capital outlays made over a 26 month period. There are also definitional and timing differences between the concepts of capital outlays and value put in place.

Consequently, even though the private nonresidential and State and local owned construction adjustments are designed to reduce the bias due to the failure to include projects in the sampling frames, for the above stated reasons, these adjustment procedures, themselves, may introduce a bias in the current estimates of value-in-place.

Furthermore, additional nonsampling errors may be introduced into the estimates because the procedures such as phasing, extrapolating, and forecasting used to develop the indirectly measured series are subject to the validity of the underlying assumptions made and mathematical models used. No explicit measures of the effect of these procedures are available.

## **MONTHLY REVISIONS TO ESTIMATES**

Statistics for the current month are preliminary estimates. These estimates are released to provide government and private data users with early measures of construction activity. A necessary part of the process of issuing these early data involves the issuance of subsequent revisions. The revisions to monthly construction put in place estimates are primarily the result of the replacement of imputed data with data which are reported in subsequent months.

For total new construction, the range of the difference between the last 12 preliminary and second revision estimates for the same months was from -1.7 percent to 0.6 percent with a median of -0.3 percent. The range of the difference between first revision and second revision was from -0.6 to 0.7 percent, with a median of -0.2 percent.

### Relative Standard Errors and Coefficients for Standard Errors of Changes

Type of construction	Relative standard error (percent)			Coefficient for changes	
	Monthly estimate	Year-to-date estimate	Annual estimate	Month-to-month change (k1)	Year-to-date change (k2)
<b>Total new construction</b> .....	2	1	1	.03	.02
Private construction.....	3	2	1	.04	.02
Residential buildings.....	5	3	2	.06	.04
New housing units.....	2	2	1	.01	.02
1 unit structures.....	2	2	2	.01	.01
2 units or more.....	4	4	3	.03	.04
Nonresidential buildings.....	2	1	1	.02	.01
Industrial.....	3	2	2	.04	.03
Office.....	4	2	2	.05	.03
Hotels, motels.....	7	6	5	.09	.08
Other commercial.....	5	3	2	.06	.04
Religious.....	9	7	5	.12	.10
Educational.....	7	5	5	.10	.07
Hospital and institutional.....	6	5	5	.07	.07
Miscellaneous buildings.....	7	5	4	.09	.07
Public construction.....	2	1	1	.03	.01
Housing and redevelopment.....	8	5	4	.11	.07
Industrial.....	(NA)	(NA)	(NA)	(NA)	(NA)
Educational.....	3	2	2	.04	.03
Hospital.....	6	5	4	.08	.07
Other public buildings.....	3	2	2	.04	.03
Highways and streets.....	4	2	2	.05	.03
Military facilities.....	(NA)	(NA)	(NA)	(NA)	(NA)
Conservation and development.....	4	2	2	.06	.03
Sewer systems.....	6	3	3	.08	.04
Water supply facilities.....	8	4	3	.11	.06
Miscellaneous public.....	8	5	4	.11	.07
State and local construction.....	2	1	1	.03	.01
Housing and redevelopment.....	8	5	5	.11	.07
Educational.....	3	2	2	.04	.03
Hospital.....	8	6	5	.11	.09
Other public buildings.....	4	3	2	.05	.04
Highways and streets.....	4	2	2	.05	.03
Conservation and development.....	16	9	9	.23	.13
Sewer systems.....	6	3	3	.08	.04
Water supply facilities.....	8	4	3	.11	.06
Miscellaneous public.....	9	5	4	.12	.07
Federal construction.....	(NA)	(NA)	(NA)	(NA)	(NA)

NA Not available.

Note: All statistics are based upon 1995 data. The coefficient (k1) for the month-to-month change is applicable to change from the previous month and change from the same month a year ago.