

# SPACE TYPES & REQUIREMENTS



## Health Services

School Type:



### Functional Area Descriptions

The health services area provides space for the health & wellness treatment of students during school hours. Schools assigned a full time nurse should include a nurse's office within the suite. Schools without a full time nurse should include a visual and physical connection to the administration area to allow a receptionist or other staff person to continuously monitor ill students.

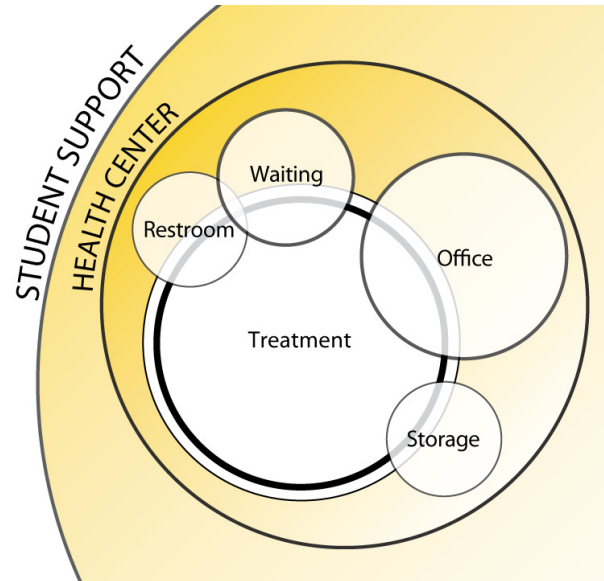
#### 1 Treatment Area

The treatment area should provide an area for ill students to lie down. The room should have enough space for a sink, a work counter, a refrigerator, a physician's scale, and a lockable medicine cabinet. Include cots with small bedside tables and ceiling hung curtains to provide privacy for each cot. If a full time nurse is assigned, this space should be directly adjacent to the nurse's office. Otherwise, the treatment area should open into the clerical work area or the administration offices.

#### 2 Restroom

Provide a single restroom with easy access from the treatment area. The room should have a lavatory, water closet and a shower stall. This room shall be handicap accessible.

Adjacency Diagram



Planning Requirements

Area Description	SF	M <sup>2</sup>	Notes
<b>Health Services</b>			
<b>1 Treatment Area</b>	275	26	Two - four cots, all schools
<b>2 Restroom</b>	65	6	All schools
<b>3 Storage</b>	50	5	All schools
<b>4 Waiting Area</b>	80	7	Only with full time nurse
<b>5 Nurse's Office</b>	100	9	Only with full time nurse
<b>6 Large school allowance</b>	250	23	Schools >100 students
<b>Total</b>	<b>820</b>	<b>76</b>	

### 3 Storage

Provide a room to store supplies, a wheelchair, and other miscellaneous equipment.

### 4 Waiting Area (with full time nurse only)

A small area where students and parents can wait for the nurse to see them should be located in the vicinity of the nurse's office.

### 5 Nurse's Office (with full time nurse only)

Locate next to the treatment area. The office provides a private space for a nurse to have a desk, lockable records storage, and side chairs.

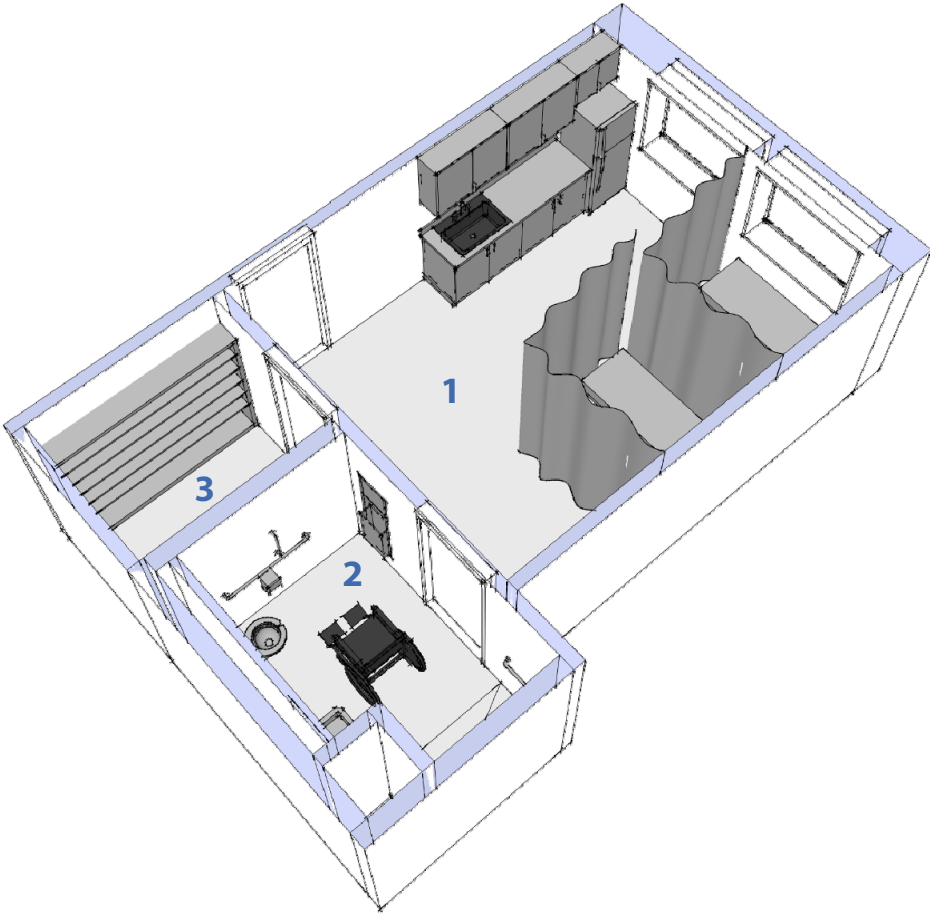
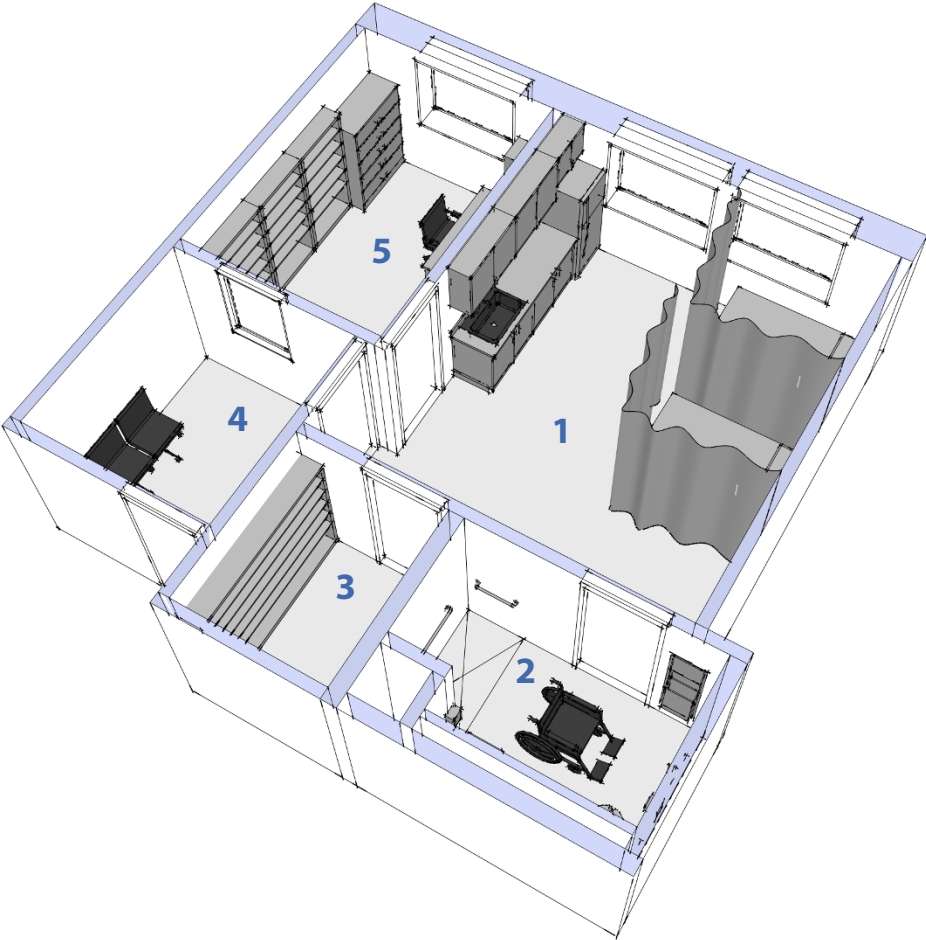
### 6 Large School Allowance

Additional space may be added to the treatment and waiting areas in schools with more than 1,000 students.



► Treatment Area: Mason Early Childhood Center, VSWC Architects, Mason, OH

NOTE: Images shown are intended to provide real-world examples and spark design creativity.



Health Services—Full Time Nurse Assigned  
Concept Perspective

Health Services—No Full Time Nurse Assigned  
Concept Perspective

NOTE: 3D illustrations are shown for informational purposes and are not intended to limit design options.