

SPACE TYPES & REQUIREMENTS



Art

School Type:

Functional Area Descriptions

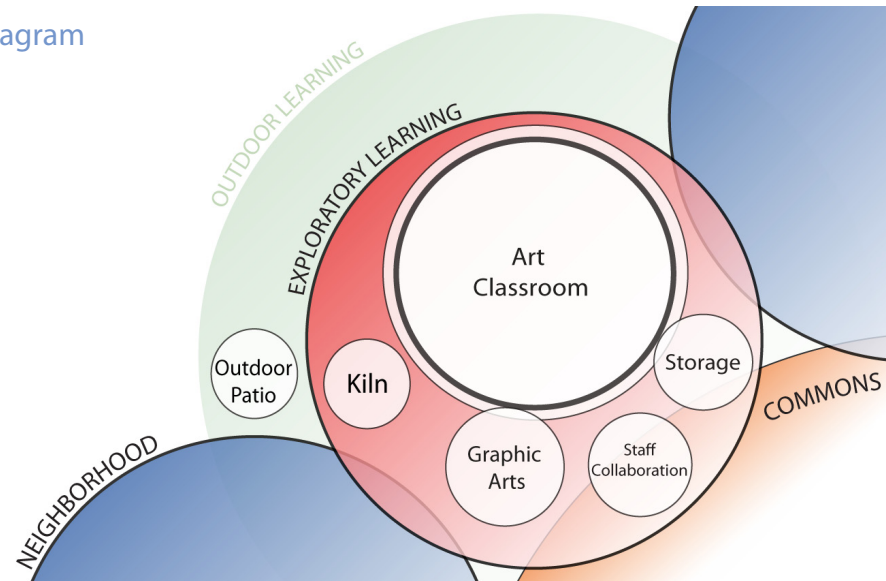
The art program provides a general curriculum that encourages students to express their thoughts and feelings in two and three-dimensional modes. Students explore many fundamental techniques with an emphasis on developing an understanding of self-expression through art. Provide standard classroom windows in the art room with views. Where possible, orient windows to the north to allow natural lighting without glare. Provide display cases and tack boards for displaying student work. For high school, the room should accommodate up to 30 students.

1 Art Room

The general work area provides space for individual and small or large group activities. Space is required for tables and chairs, flat files, and shelves/cabinets. Provide display cases and tack boards for displaying student work. Provide a door from the general work area to an outdoor patio.

Locate the instruction area at the front of the classroom, with easy access to the storage room. This area typically contains a demonstration desk, a marker board, and interactive white board. Provide a student clean-up area separate from the general work area that includes a sink and provides space for students to clean themselves and their equipment.

Adjacency Diagram



Planning Requirements

| Area Description | SF | M ² | Notes |
|------------------------|--------------|----------------|-------|
| Art - ES, MS | | | |
| 1 Art Room | 1,100 | 102 | |
| 2 Graphic Arts | 200 | 19 | |
| 3 Kiln | 100 | 9 | |
| 4 Art Workroom/Storage | 200 | 19 | |
| 5 Staff Collaboration | 100 | 9 | |
| Total | 1,700 | 158 | |
| Art - HS | | | |
| 1 Art Room | 1,550 | 144 | |
| 2 Graphic Arts | 300 | 28 | |
| 3 Kiln | 100 | 9 | |
| 4 Art Workroom/Storage | 200 | 19 | |
| 5 Staff Collaboration | 100 | 9 | |
| Total | 2,250 | 209 | |

2 Graphic Art Technology Lab

Provide the graphic art technology lab separate from the dusty activities in the instructional space. This room should be designed with space for six computers and color printers. Provide a tall storage area for computer reference materials. A large glass window allows supervision between the computer and instructional rooms.

3 Kiln

The room requires space for a kiln, a quench sink, damp and dry storage, and a small worktable. This is a wet area. Provide an extra wide door for equipment access. Provide interlocked outside supply air and exhaust air fans in the kiln room to prevent conditioned air from the adjacent classroom space from being exhausted. This space is required to be on an exterior wall.

4 Art Workroom/Storage

The storage area contains shelving for art supplies and equipment. Provide a lockable teacher preparation area and vented storage cabinet for paints and thinners. Deep well storage and large flat storage should also be provided for in this area. Provide multiple sinks to allow for appropriate clean-up with proper filtration for drainage.

5 Staff Collaboration

The staff collaboration space may be included with the instructional area or can be combined into a shared suite for visual/performing arts teachers or any other curriculum grouping.

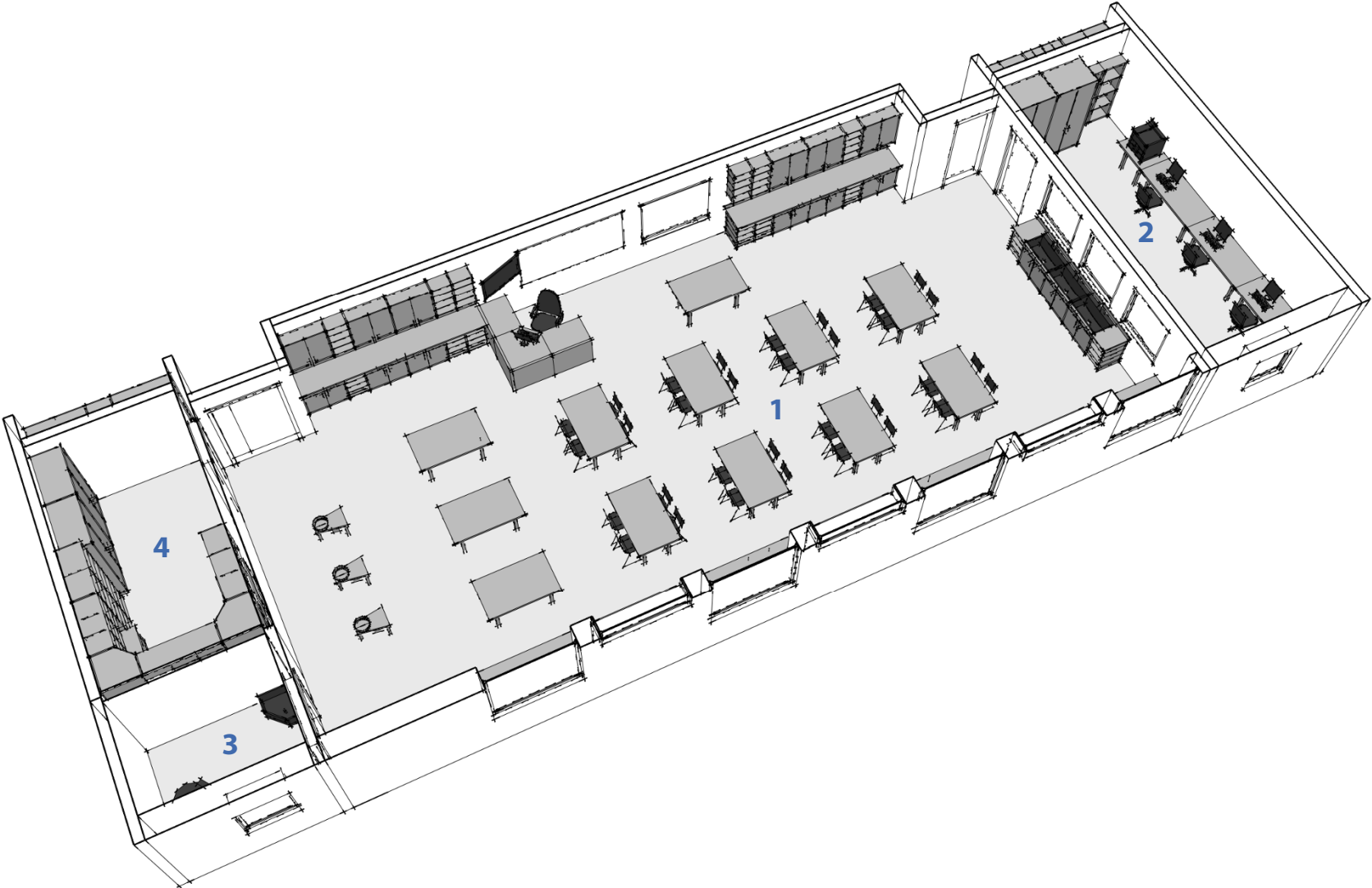
6 Outdoor Patio Area

Provide a paved exterior space adjacent to the art room to function as an extension of the art room. This space should be large enough for the entire class to work individually or in groups.



► Art Classroom: *The Academy*, BVN Architecture, Melbourne, Victoria, Australia

NOTE: Images shown are intended to provide real-world examples and spark design creativity.



Art Concept Perspective

NOTE: 3D illustrations are shown for informational purposes and are not intended to limit design options.