

OE ENERGY MARKET SNAPSHOT

Southeast States Version – September 2012 Data

Office of Enforcement
Federal Energy Regulatory Commission
October 2012



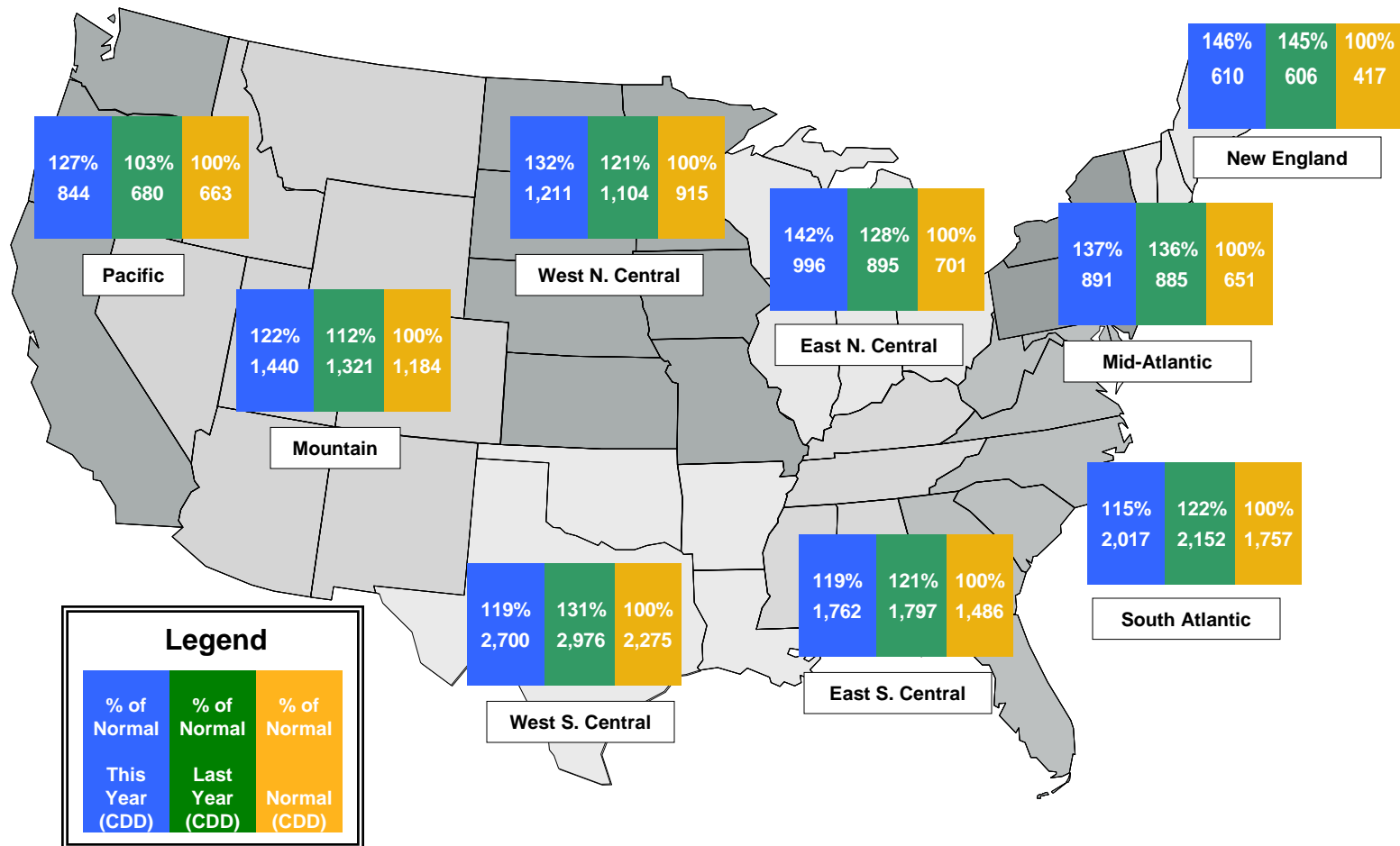
Infrastructure Report

September Infrastructure Report



Weather

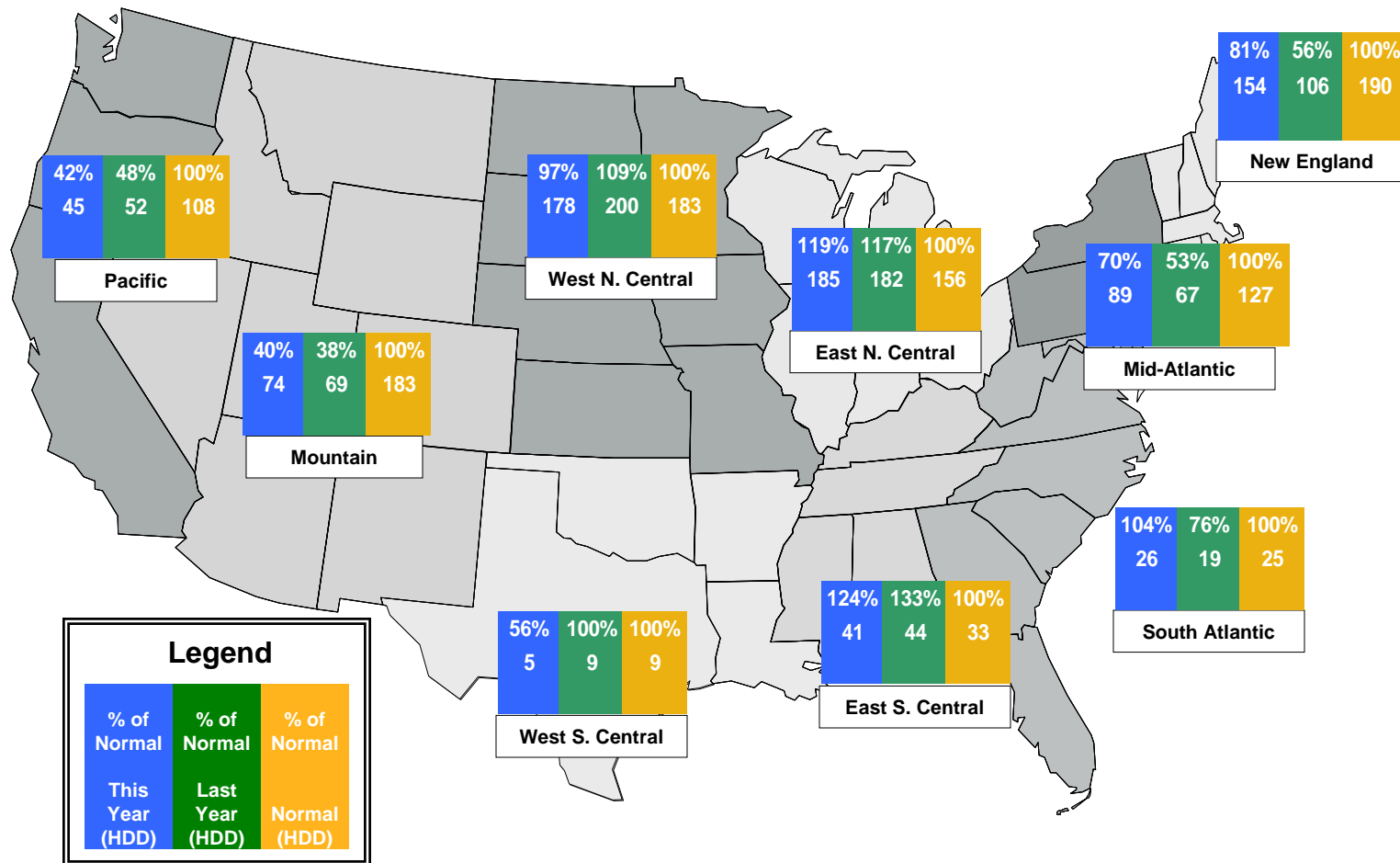
Regional Cooling Degree Days – January to September 2012



Source: Derived from NOAA data. Normal is based on a 30-year average of cooling degree day data.
 October 2012 Southeast Snapshot Report

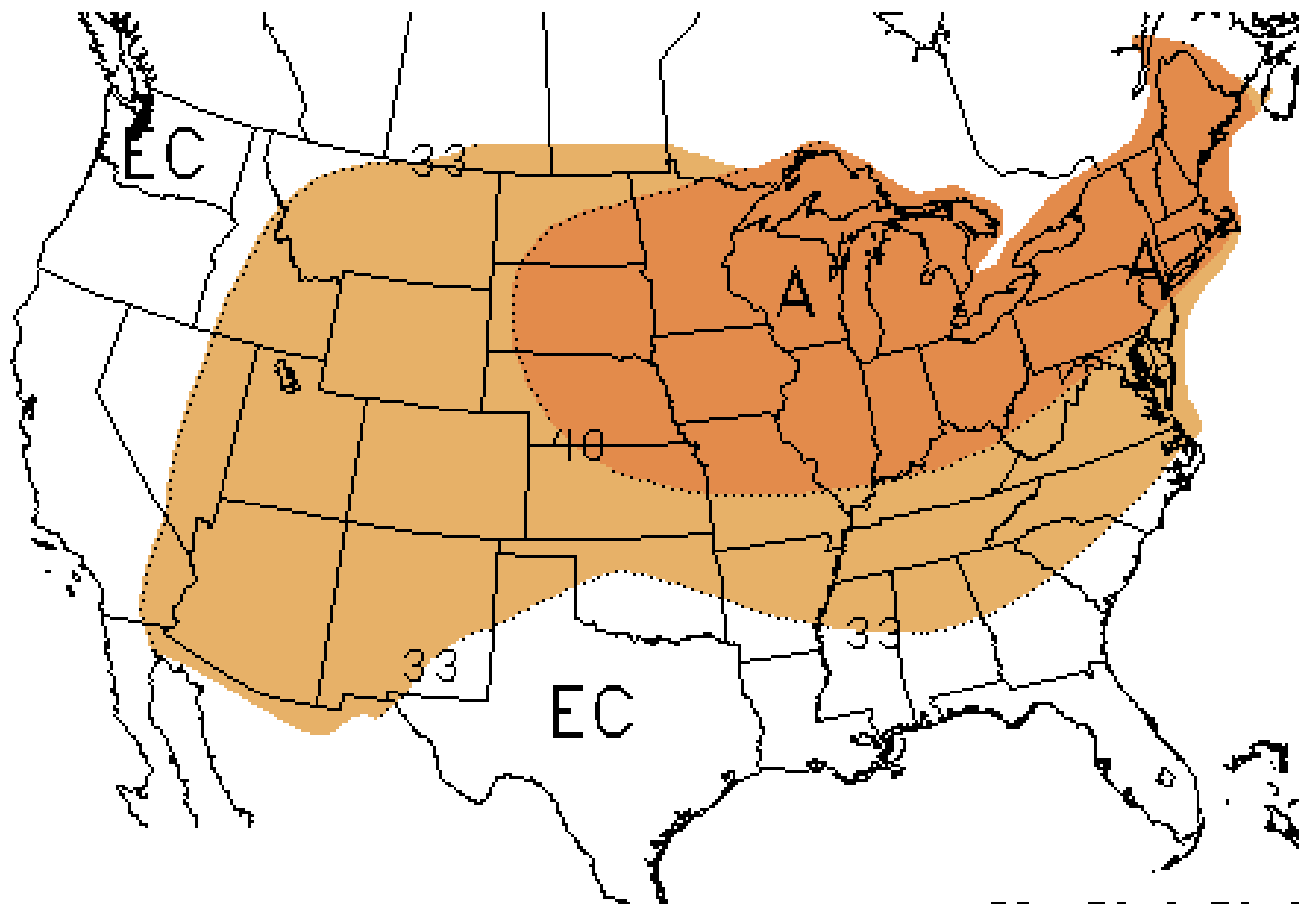
Updated: October 15, 2012

Regional Heating Degree Days – July 2012 to September 2012



Source: Derived from NOAA data. Normal is based on a 30-year average of heating degree day data.
October 2012 Southeast Snapshot Report

NOAA's 3 Month Temperature Forecast Made September 20, 2012, Valid for October 2012 – December 2012



Note: "A" areas are above normal, "B" areas are below normal and "EC" means equal chance. Normal is based on the last 30 years of data.
Source: Derived from NOAA data.

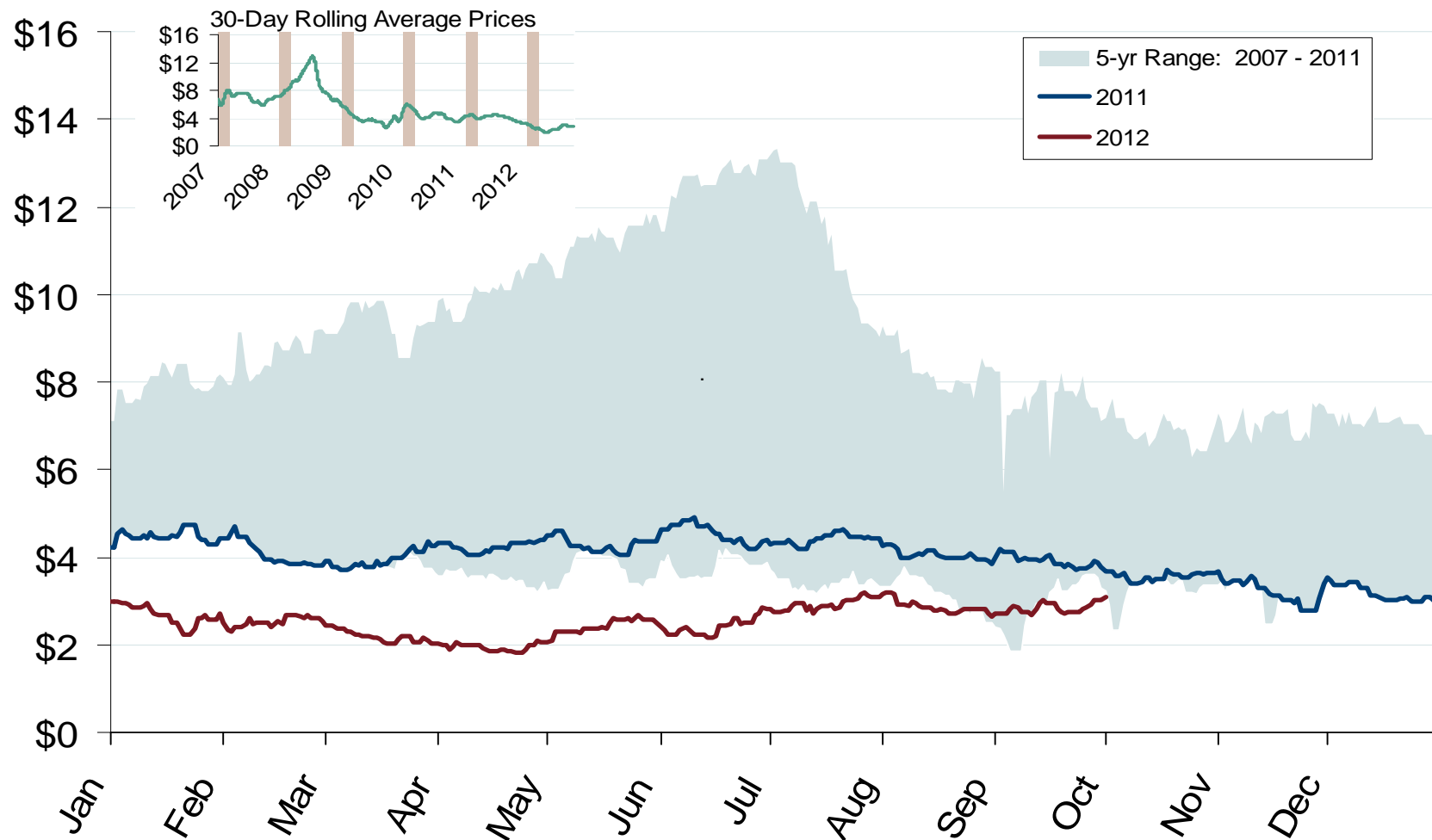
Updated: October 3, 2012

A decorative graphic consisting of several overlapping red lines. Two vertical lines intersect with three horizontal lines, creating a cross-like shape. The lines have a slight blur or glow effect.

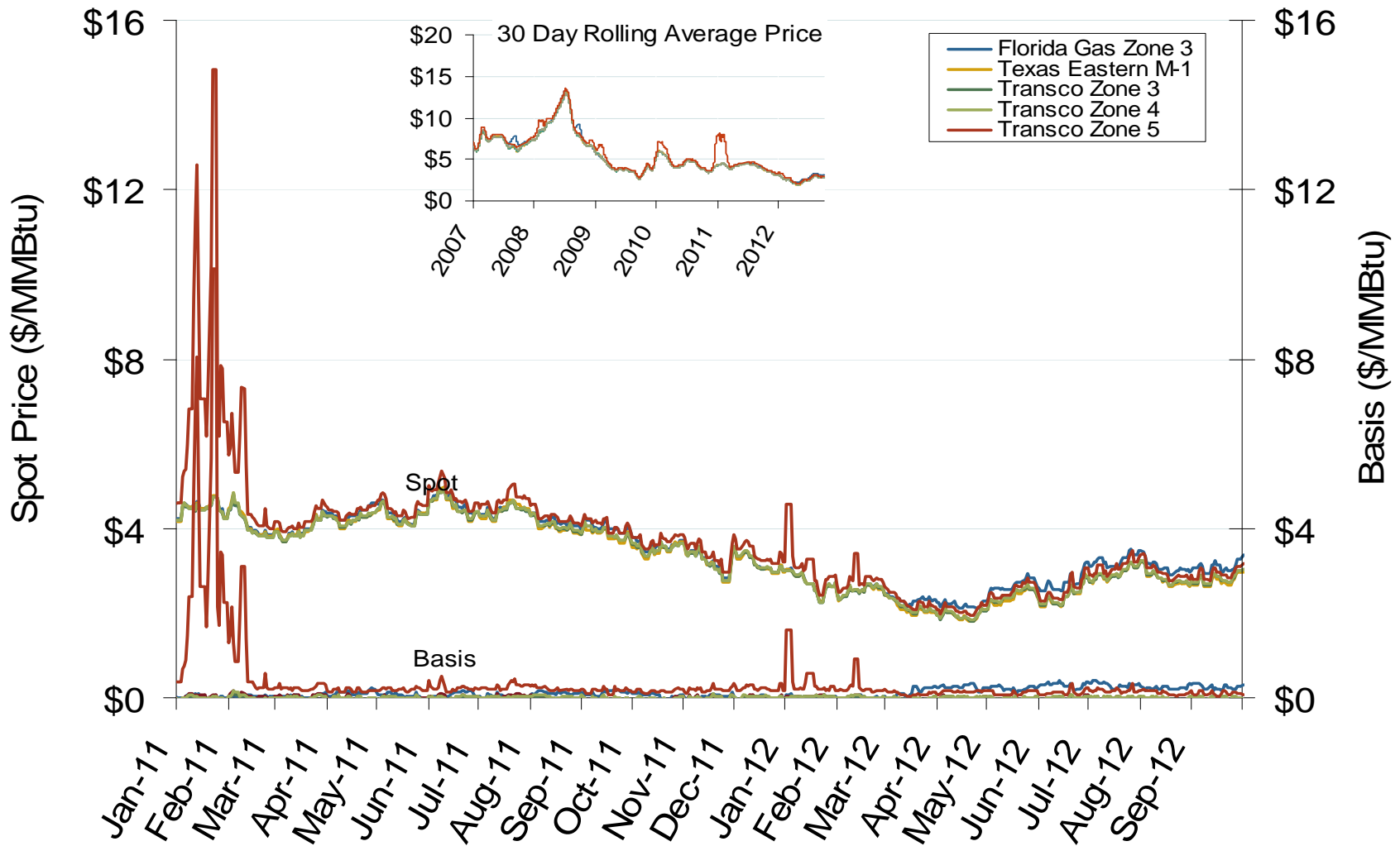
Natural Gas and Fuels Markets

Federal Energy Regulatory Commission • Market Oversight • www.ferc.gov/oversight

Henry Hub Natural Gas Daily Spot Prices

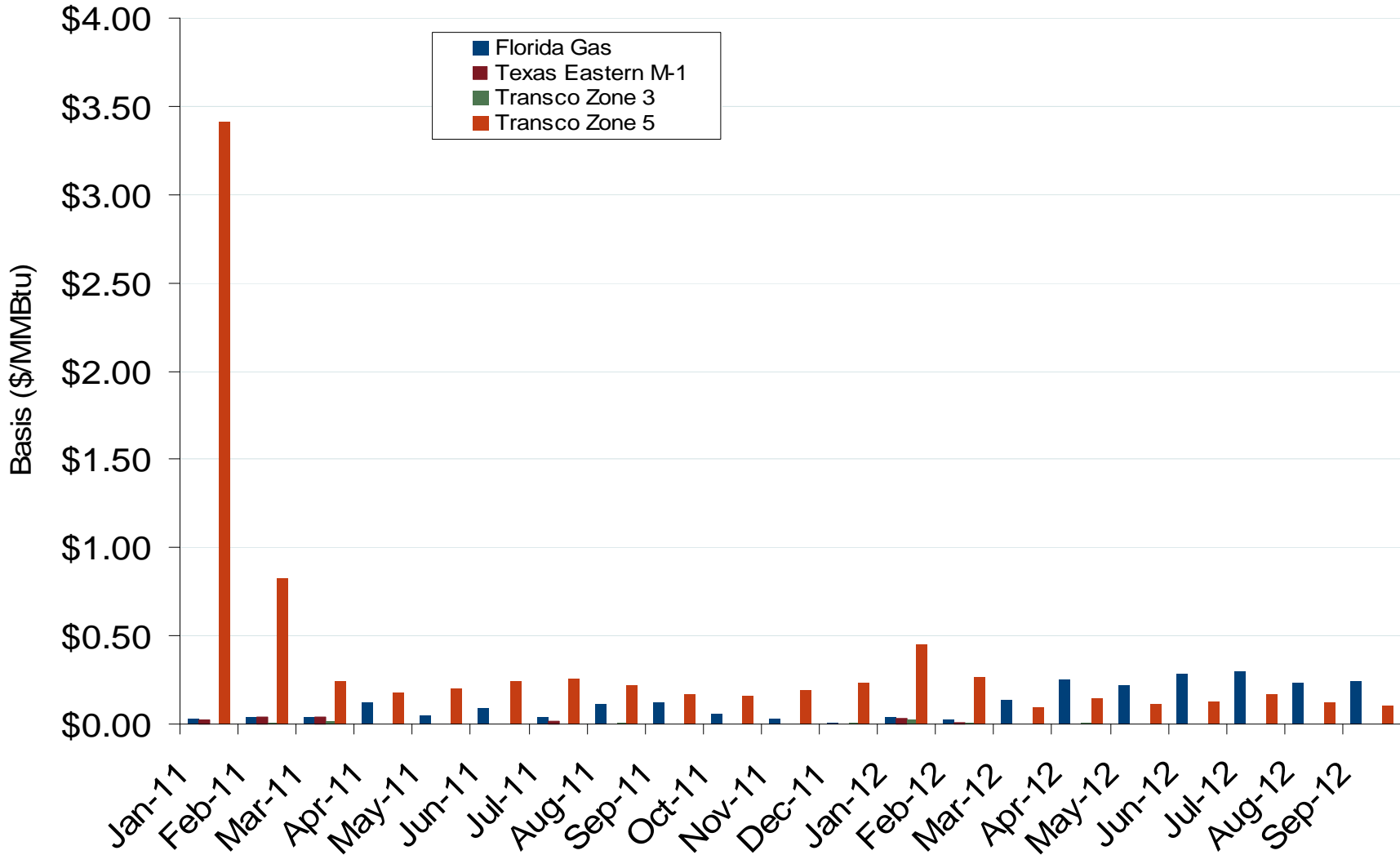


Southeastern Day-Ahead Hub Spot Prices and Basis



Federal Energy Regulatory Commission • Market Oversight • www.ferc.gov/oversight

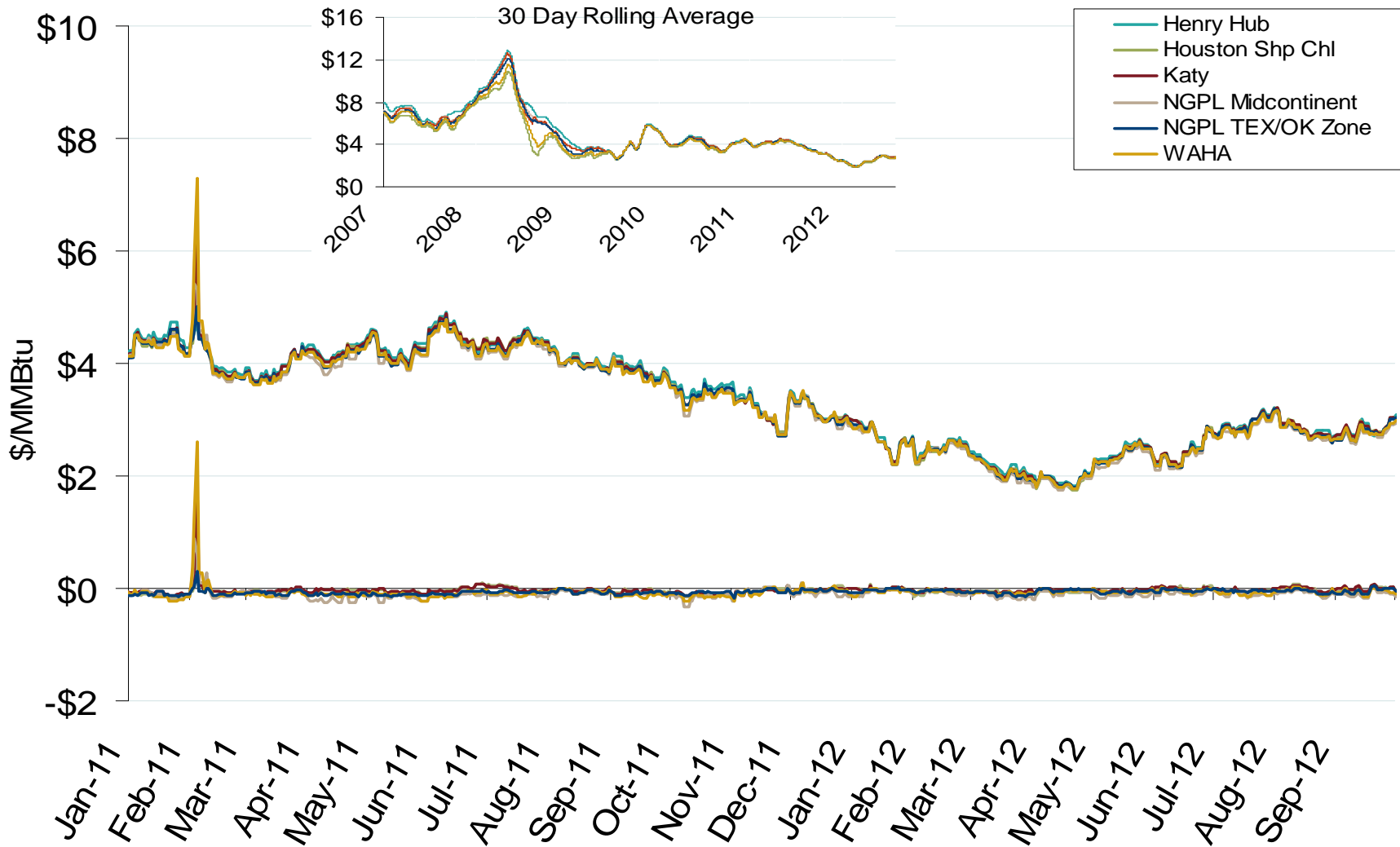
Southeastern Monthly Average Basis Value to Henry Hub



Source: Derived from *Platts* data
 October 2012 Southeast Snapshot Report

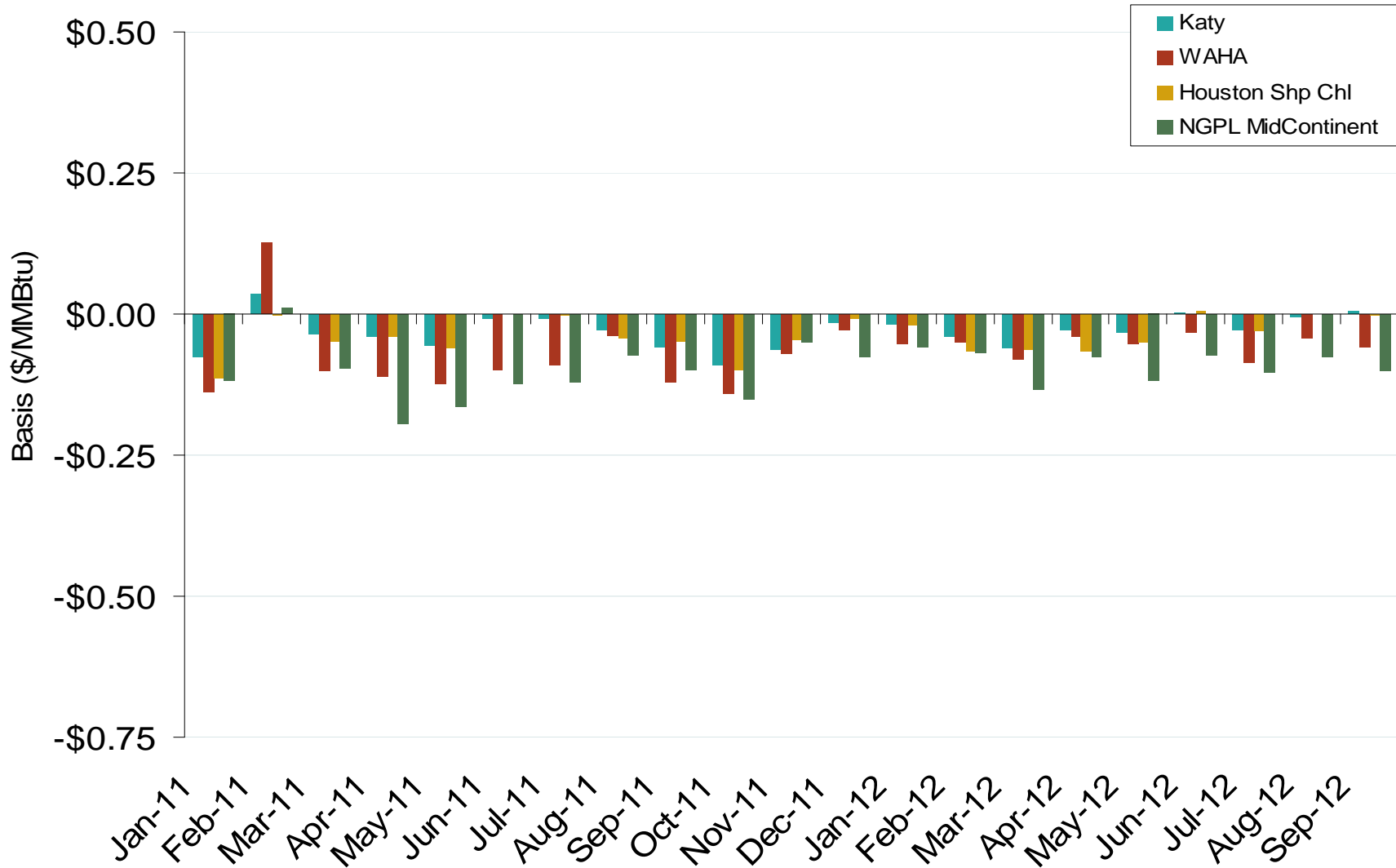
Federal Energy Regulatory Commission • Market Oversight • www.ferc.gov/oversight

Gulf Day-Ahead Hub Spot Prices and Basis

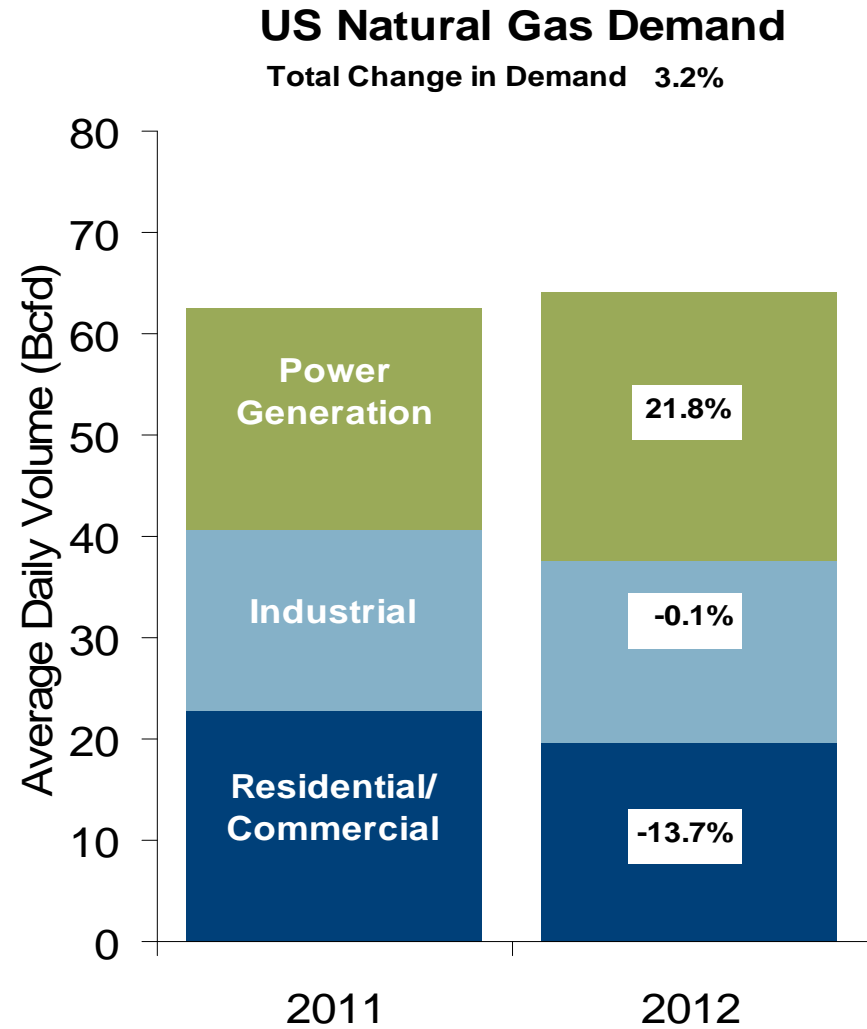
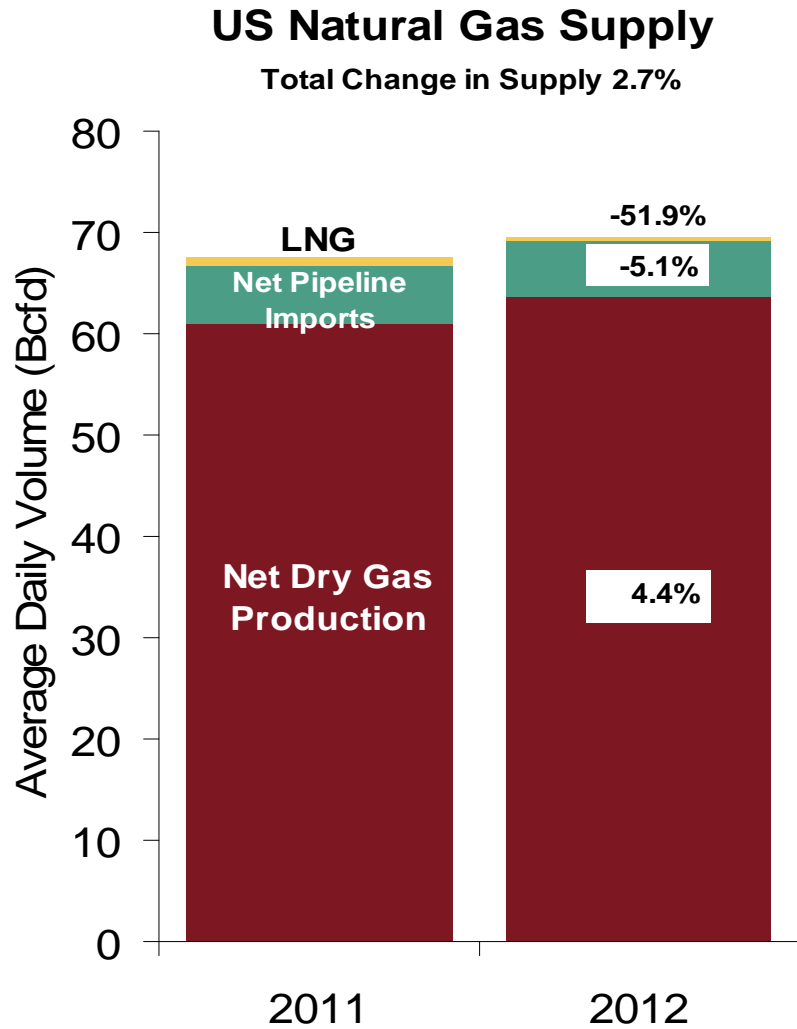


Federal Energy Regulatory Commission • Market Oversight • www.ferc.gov/oversight

Gulf Monthly Average Basis Value to Henry Hub



U.S. NG Supply and Demand 2011 vs. 2012: January - September



Note: Balance includes all amounts not attributable to other categories.

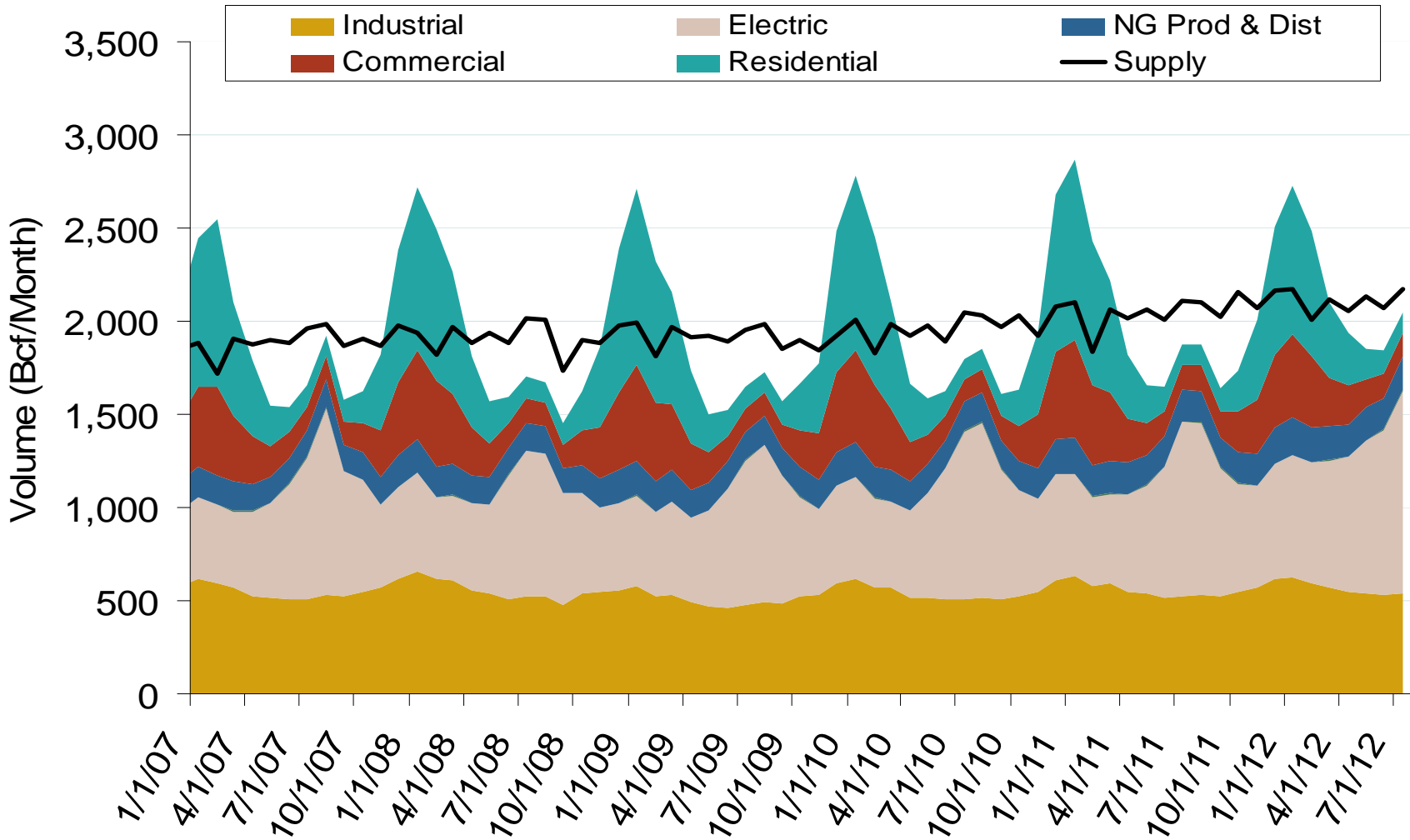
Source: Derived from *Bentek Energy* data

October 2012 Southeast Snapshot Report

Updated: October 15, 2012

Federal Energy Regulatory Commission • Market Oversight • www.ferc.gov/oversight

Annual U.S. Natural Gas Consumption by Sector



Notes: Supply includes lower 48 state production, net pipeline imports, and LNG imports

Source: Derived from EIA data

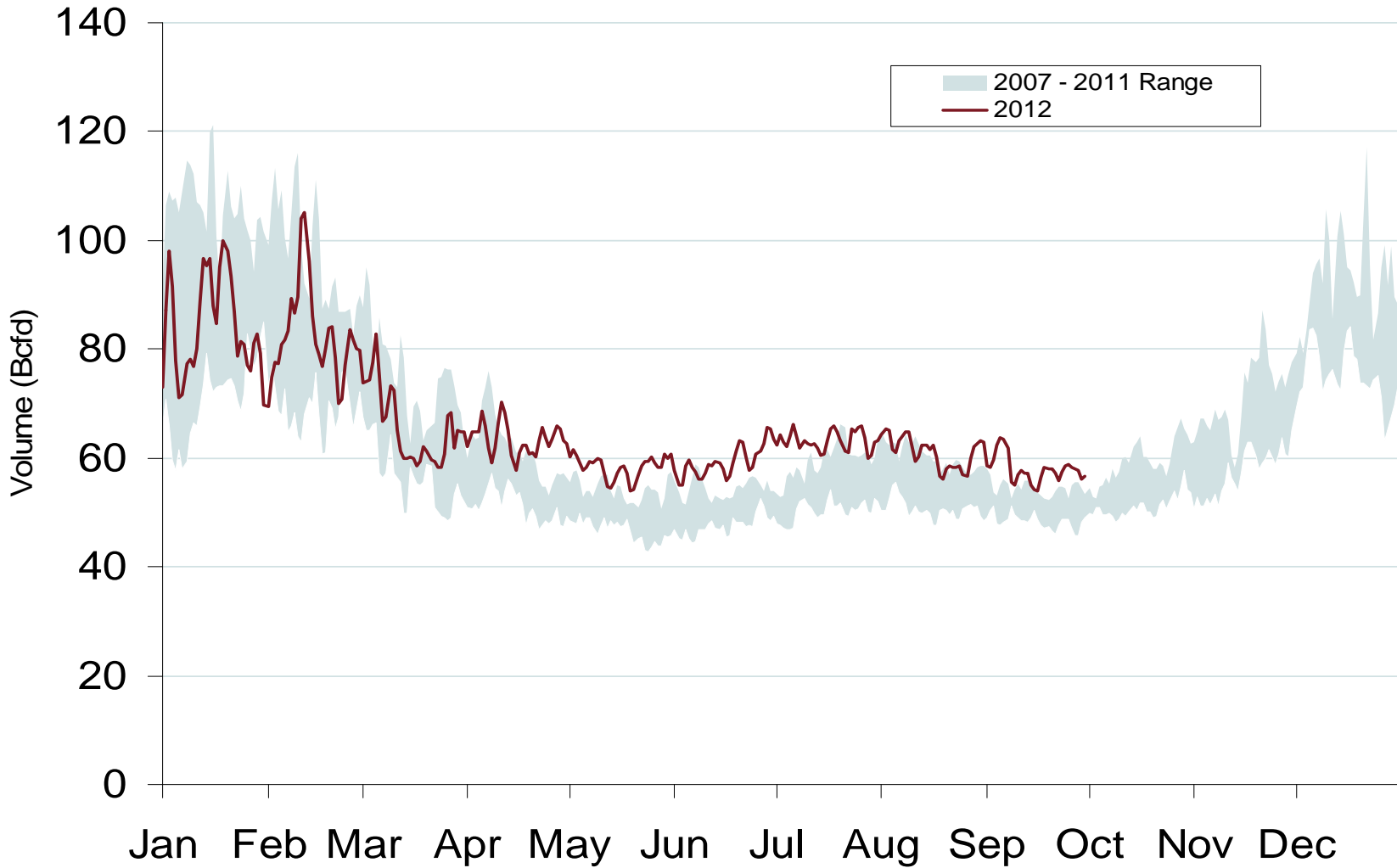
October 2012 Southeast Snapshot Report

Updated: October 03, 2012

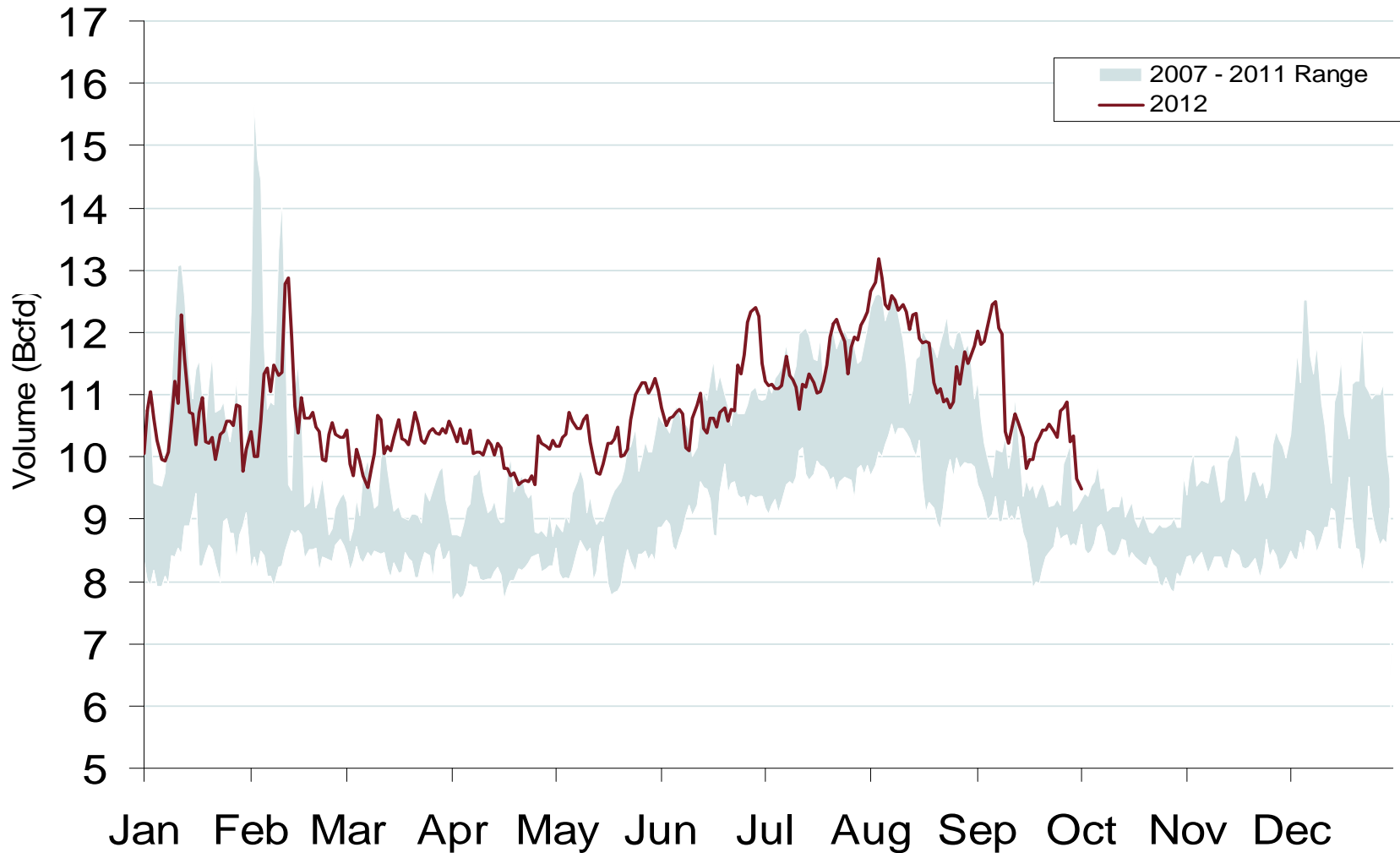
20013

Federal Energy Regulatory Commission • Market Oversight • www.ferc.gov/oversight

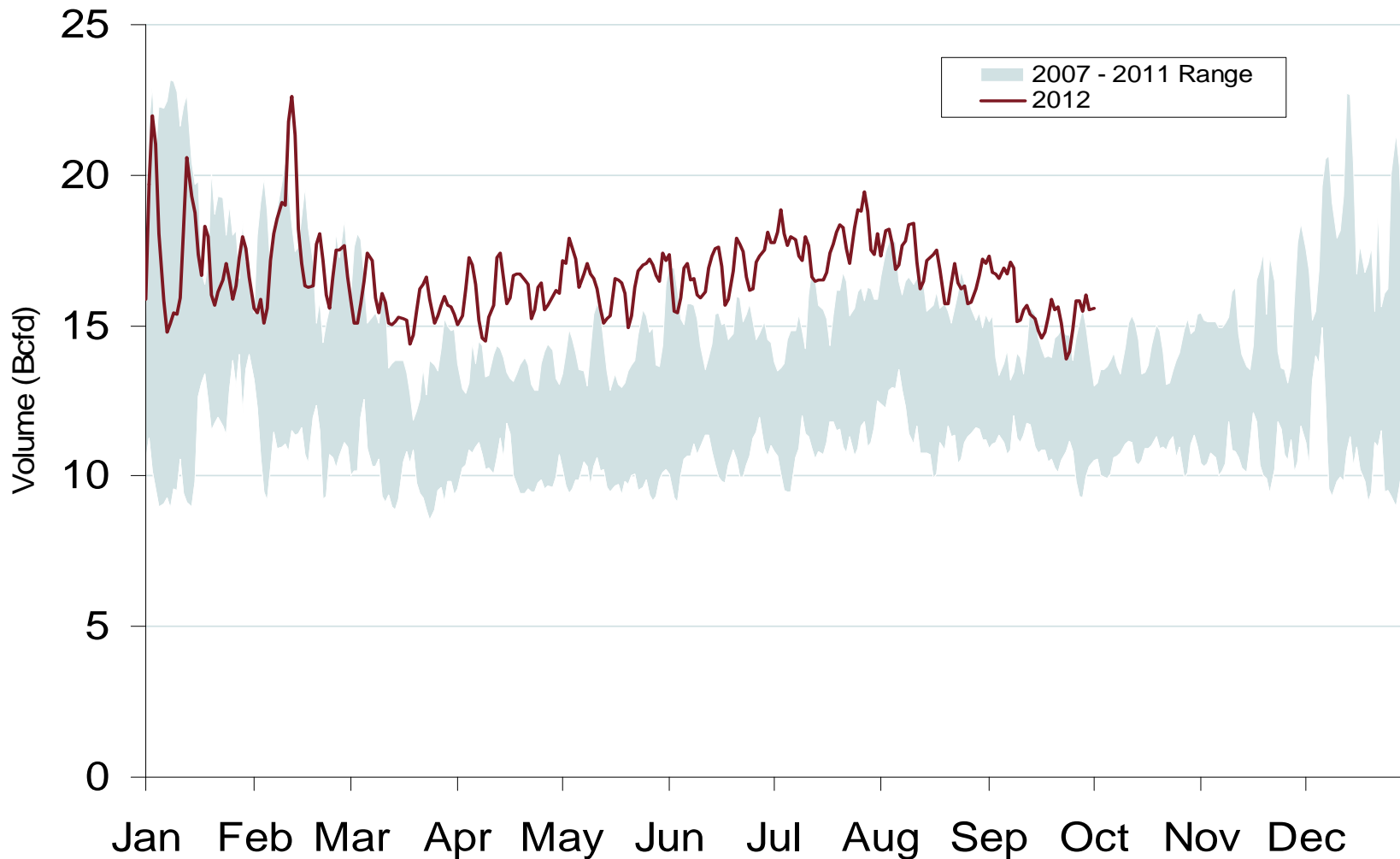
Total U.S. Natural Gas Demand All Sectors



Daily Gulf Natural Gas Demand All Sectors

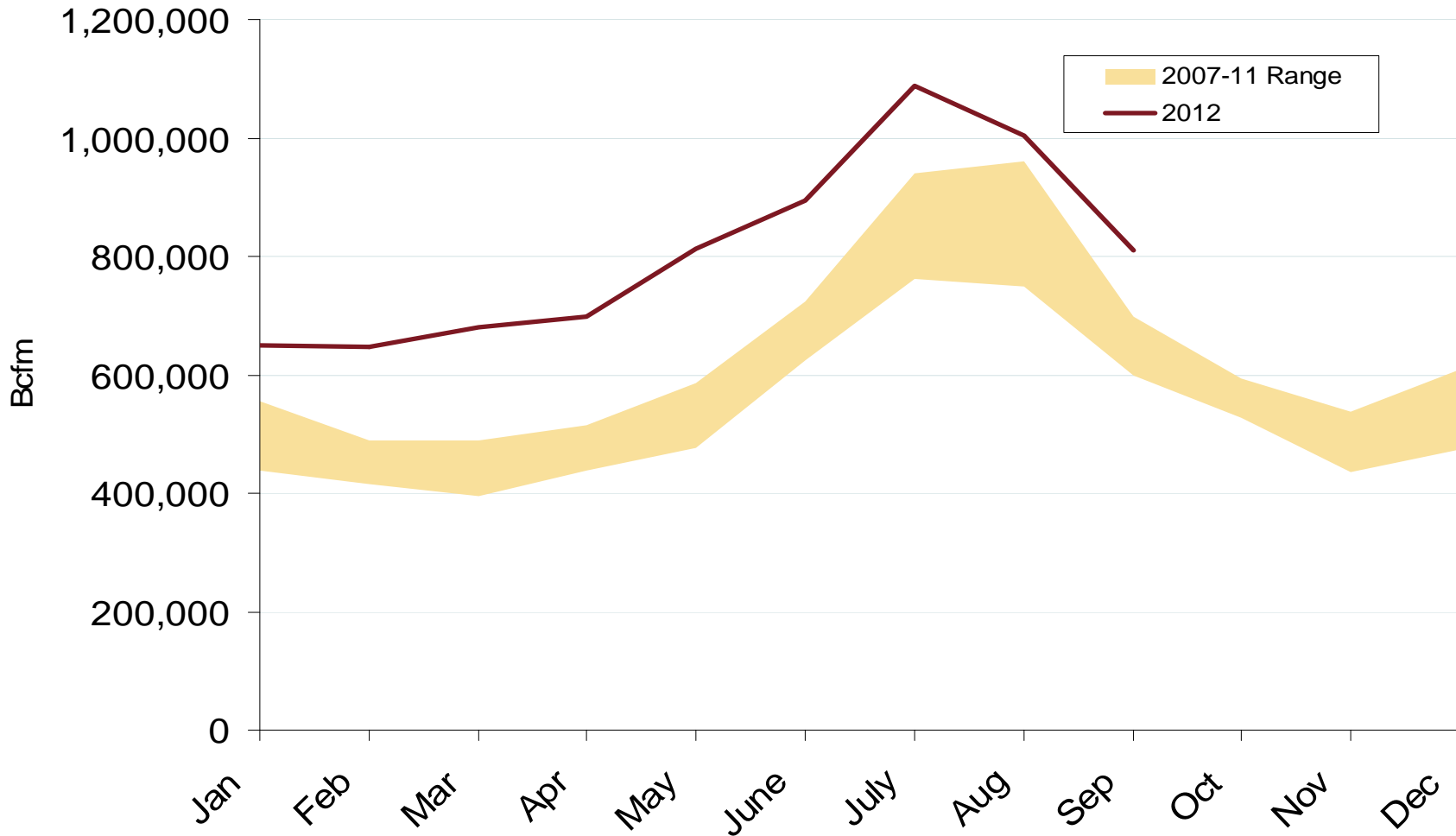


Daily Southeast Natural Gas Demand All Sectors



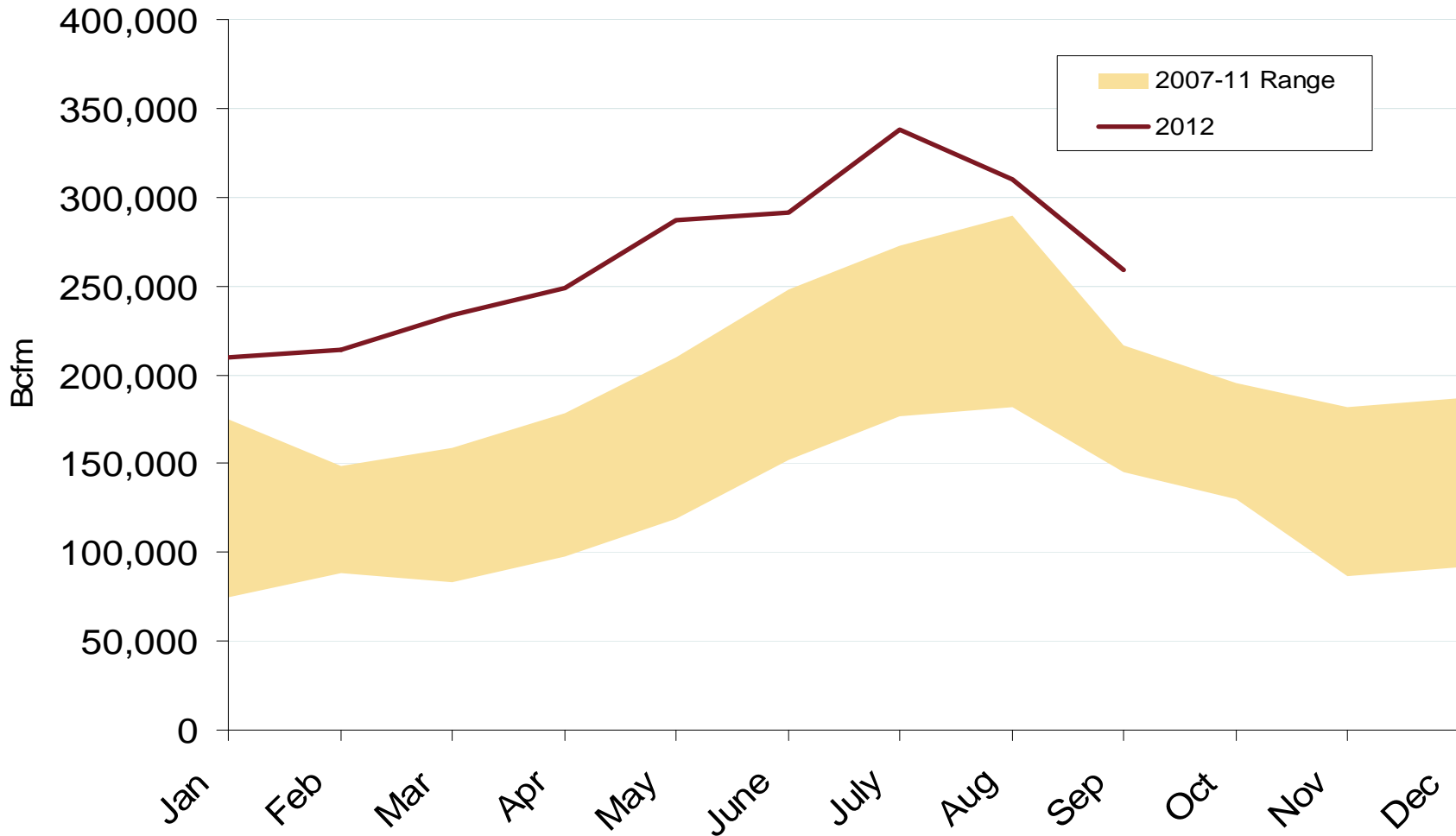
Federal Energy Regulatory Commission • Market Oversight • www.ferc.gov/oversight

U.S. Natural Gas Consumption for Power Generation

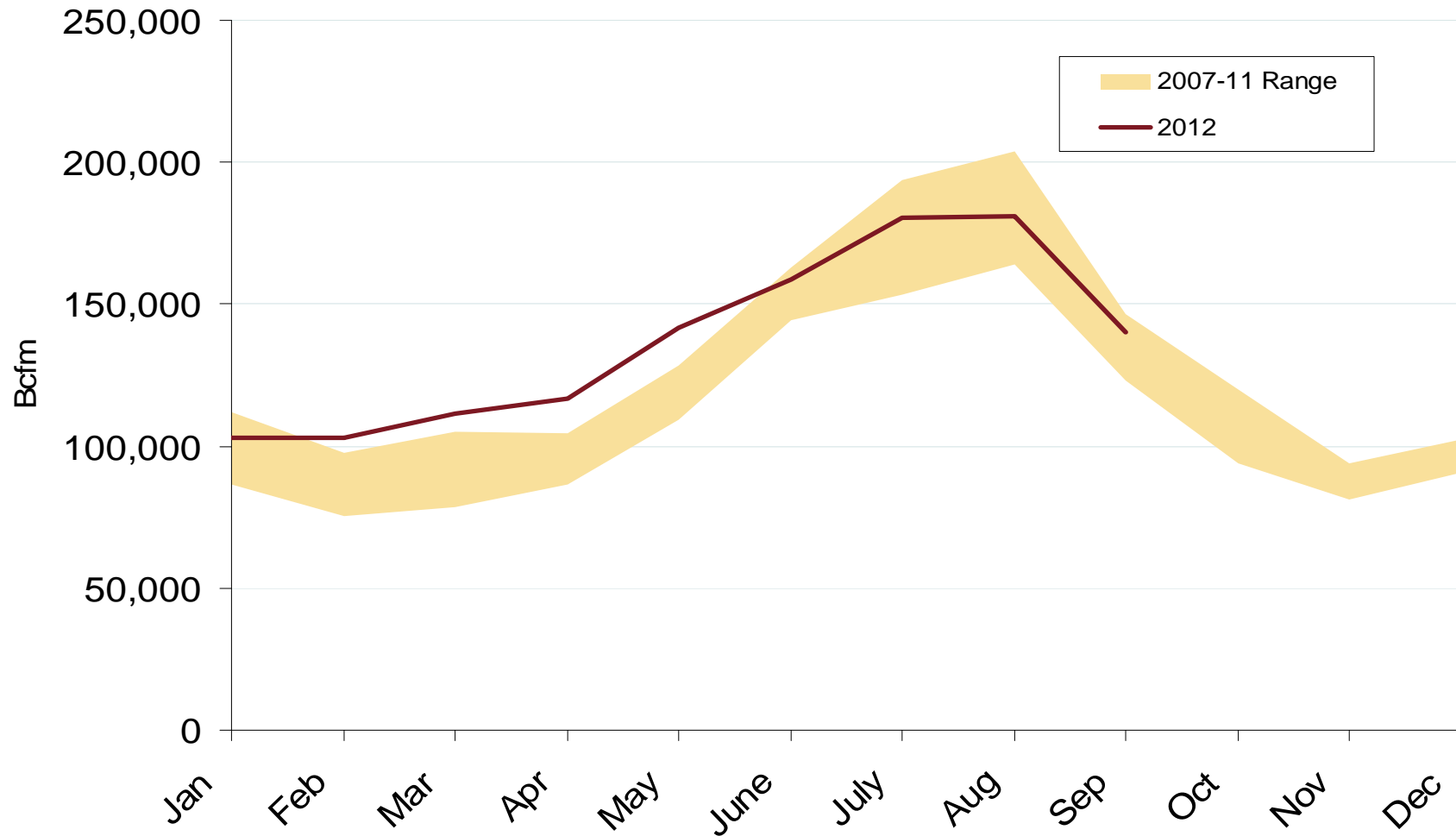


Federal Energy Regulatory Commission • Market Oversight • www.ferc.gov/oversight

Southeast Natural Gas Consumption for Power Generation

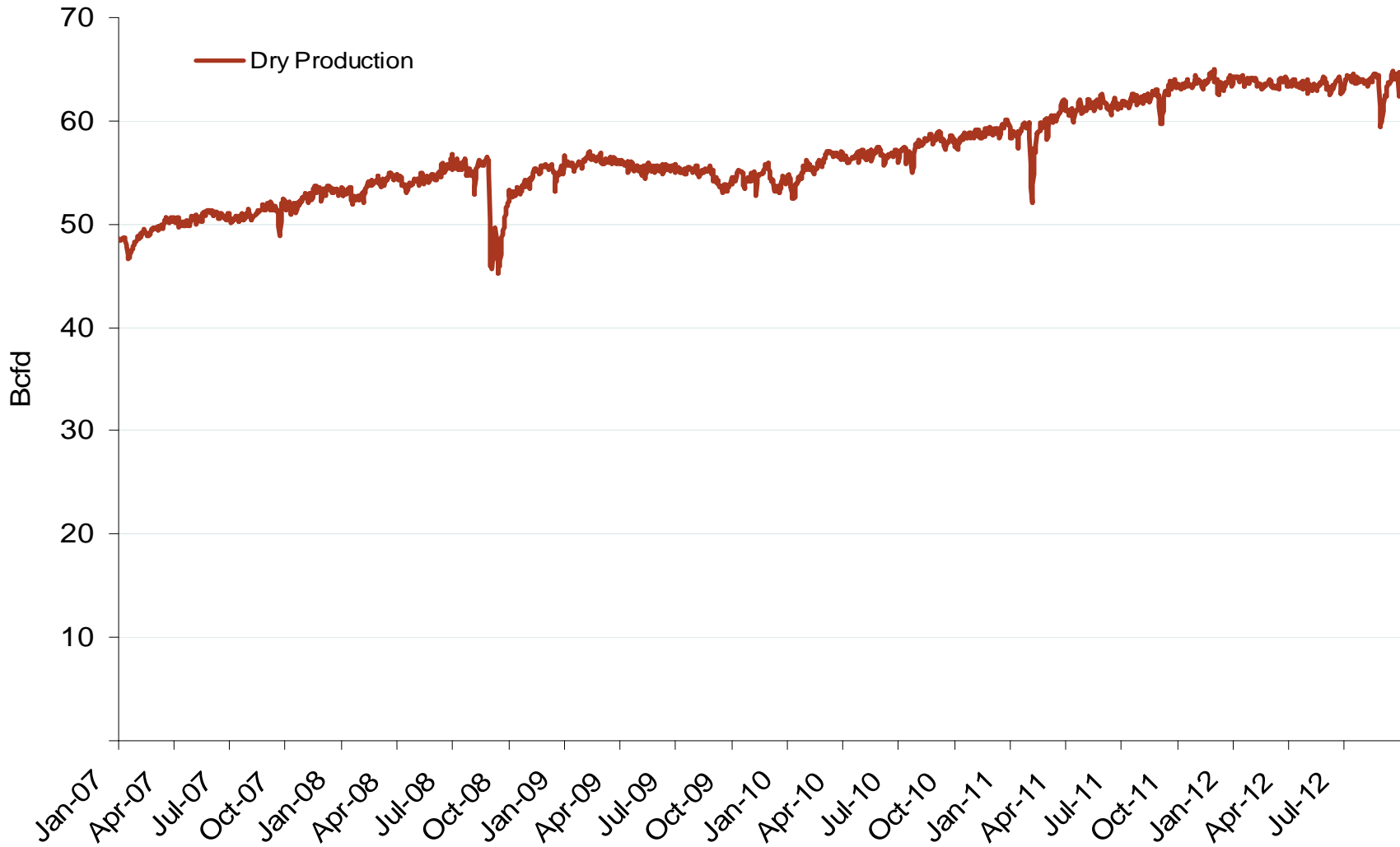


Gulf Natural Gas Consumption for Power Generation



Federal Energy Regulatory Commission • Market Oversight • www.ferc.gov/oversight

Monthly U.S. Dry Gas Production – Lower 48 States



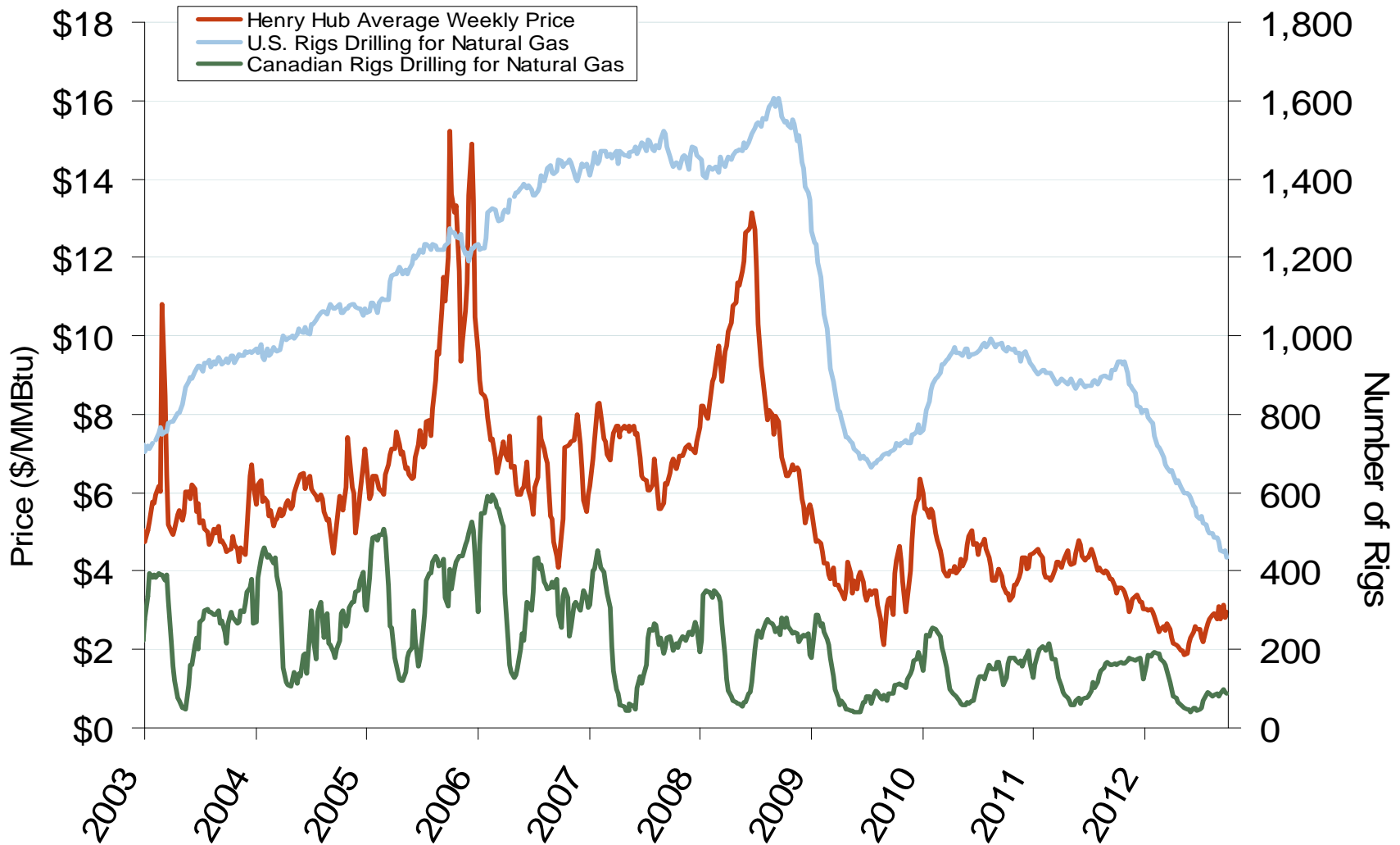
Note: Prior to July 2010, chart was derived from a combination of *EIA* and *Bentek Energy* data

Source: Derived from *Bentek Energy* data

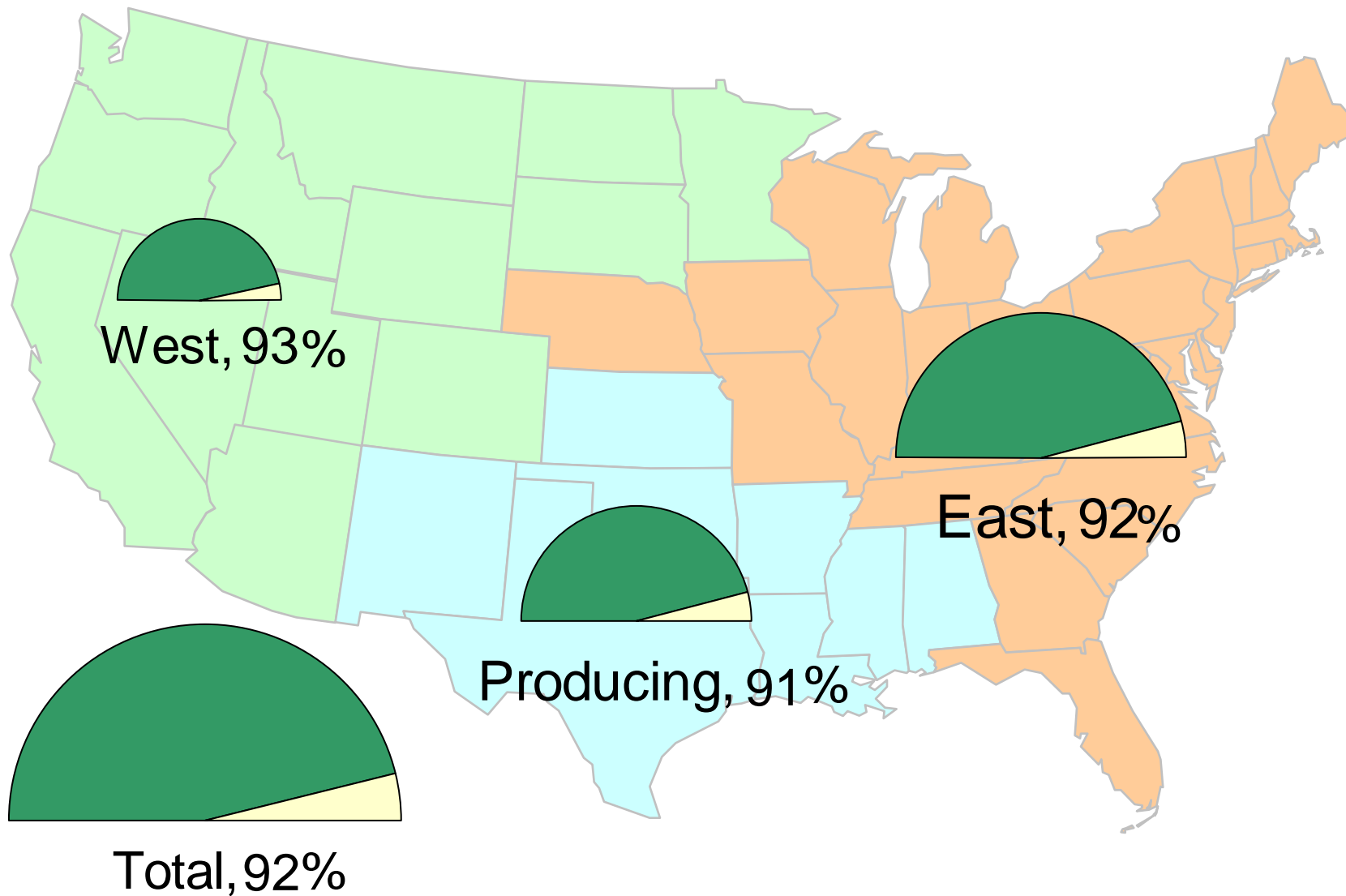
October 2012 Southeast Snapshot Report

Updated: October 02, 2012

U.S. and Canadian NG Drilling Rig Count and Daily Spot Prices



Natural Gas Storage Inventories – October 12, 2012

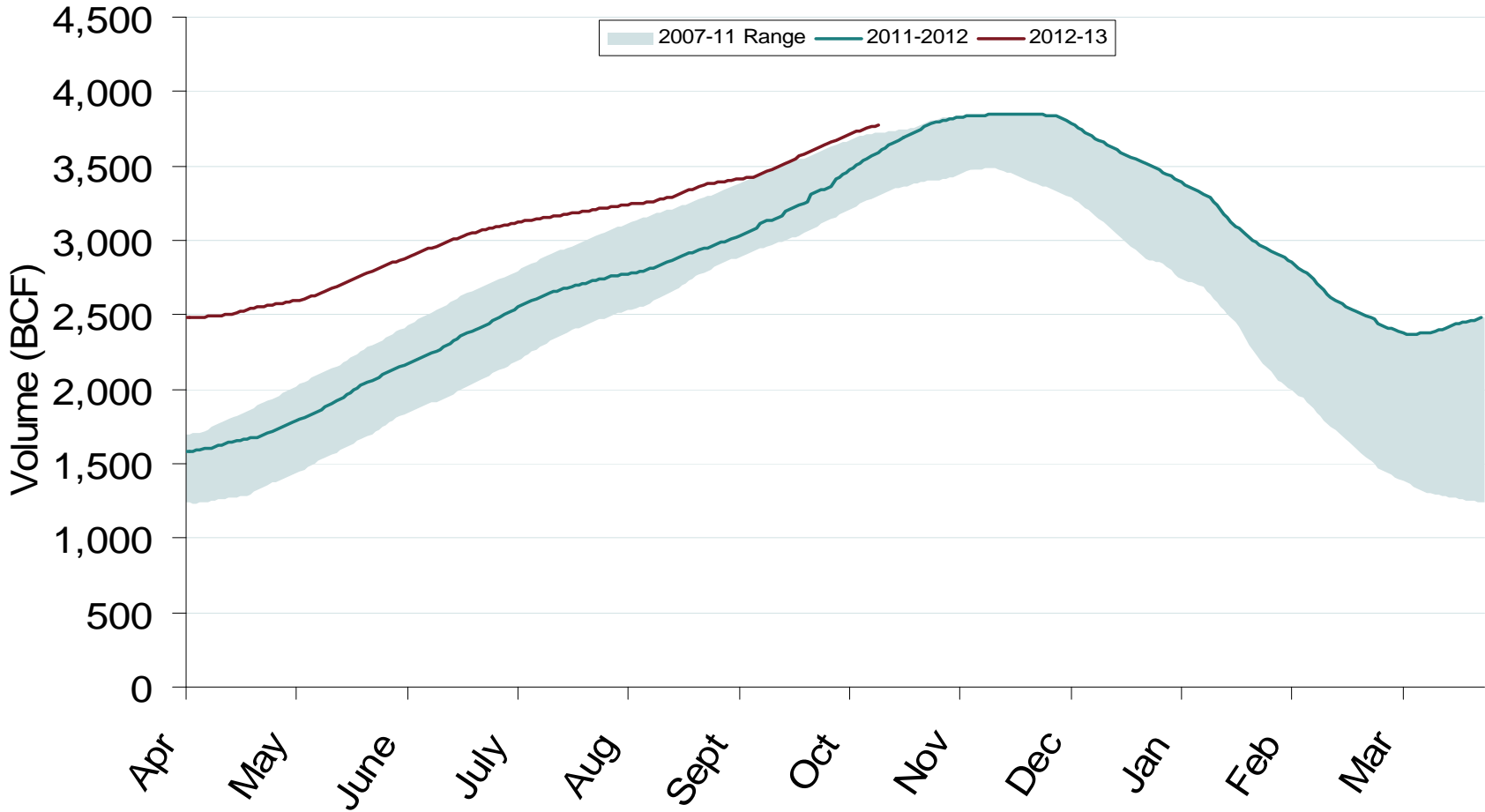


Source: Derived from *EIA Storage* and *Estimated Working Gas Capacity* data

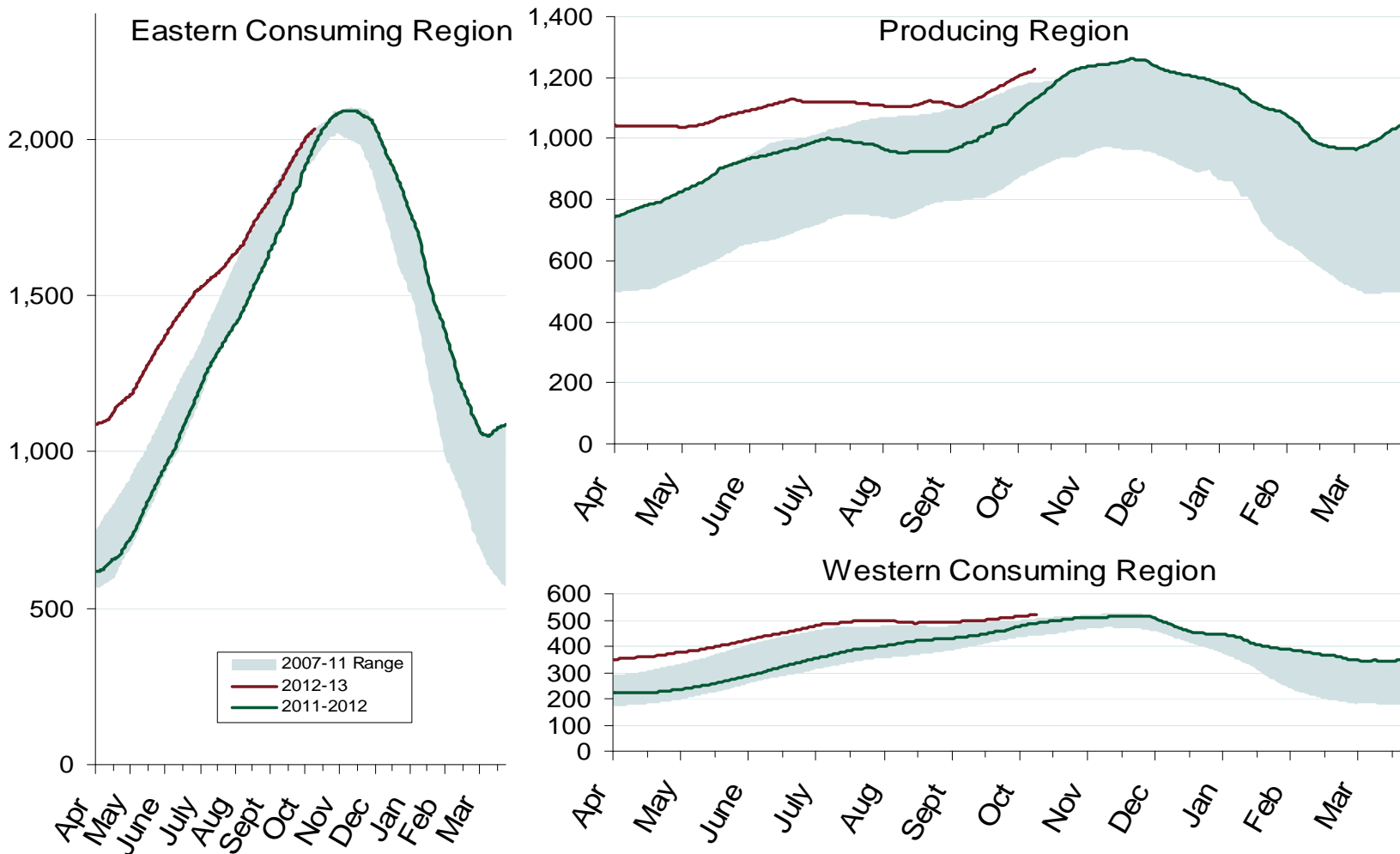
October 2012 Southeast Snapshot Report

Updated: October 3, 2012 20022

Total U.S. Working Gas in Storage



Regional Totals of Working Gas in Storage

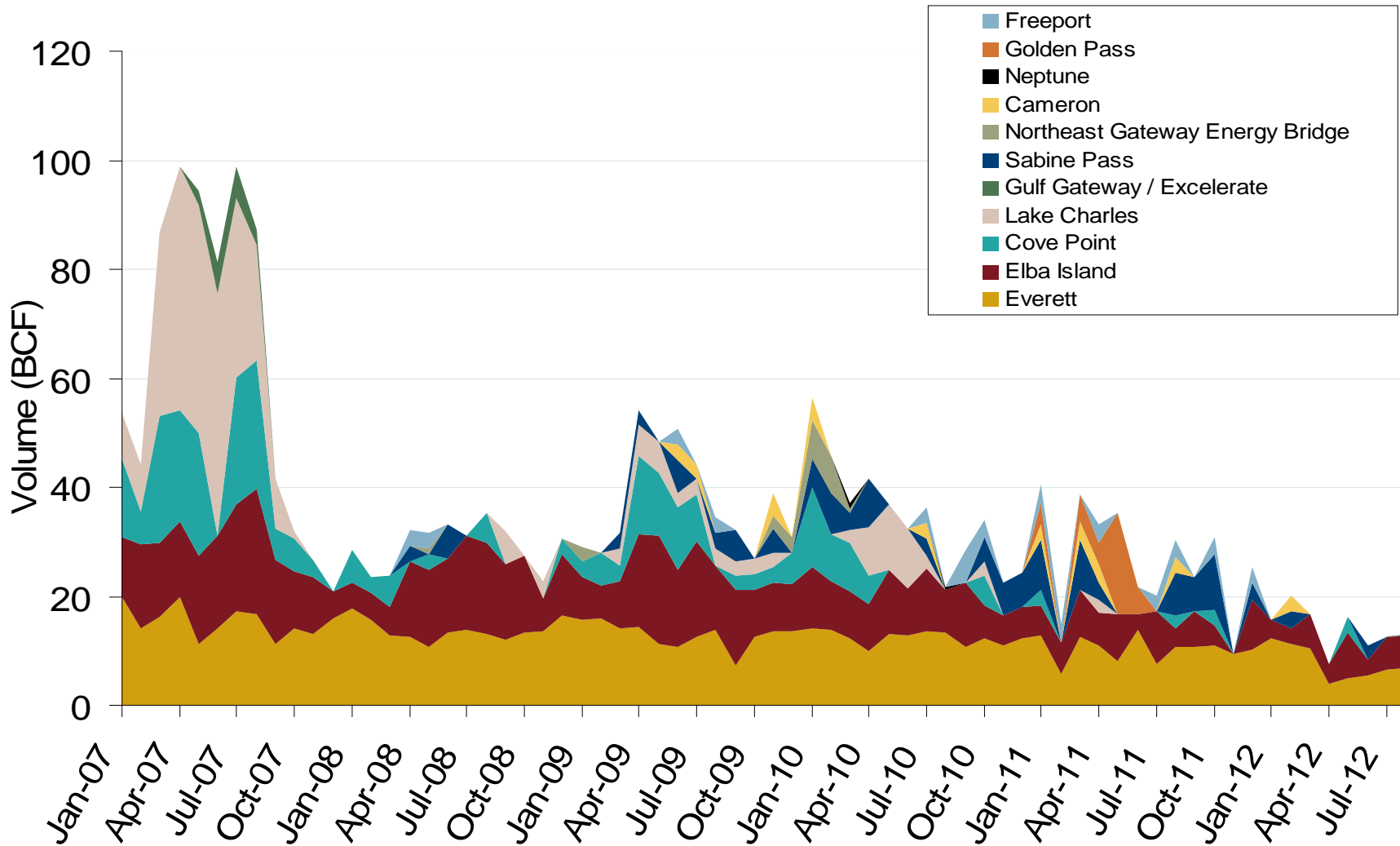


World LNG Estimated November 2012 Landed Prices



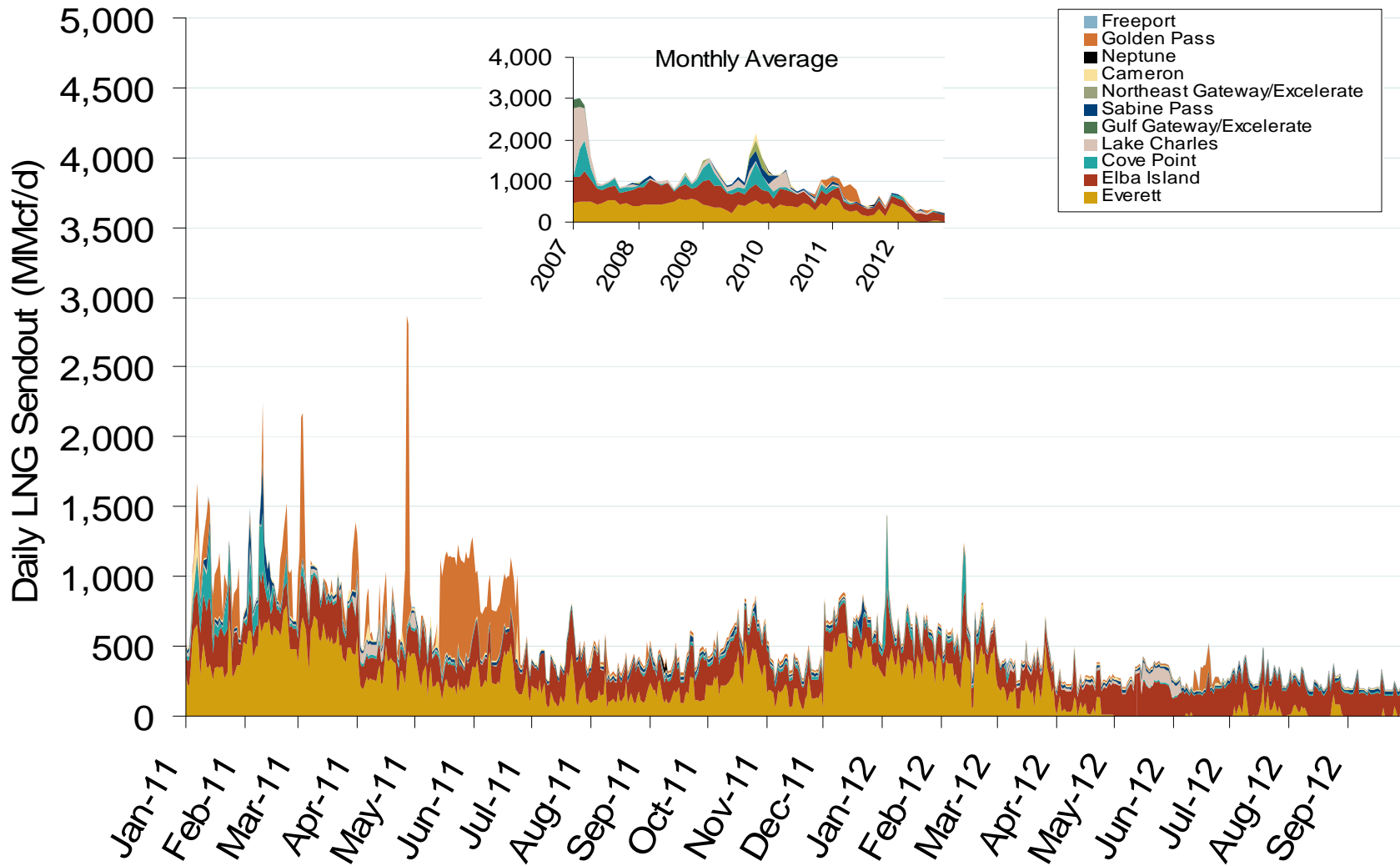
Federal Energy Regulatory Commission • Market Oversight • www.ferc.gov/oversight

Monthly Gas Imports at Existing U.S. LNG Facilities



Federal Energy Regulatory Commission • Market Oversight • www.ferc.gov/oversight

Daily Gas Sendout from Existing U.S. LNG Facilities

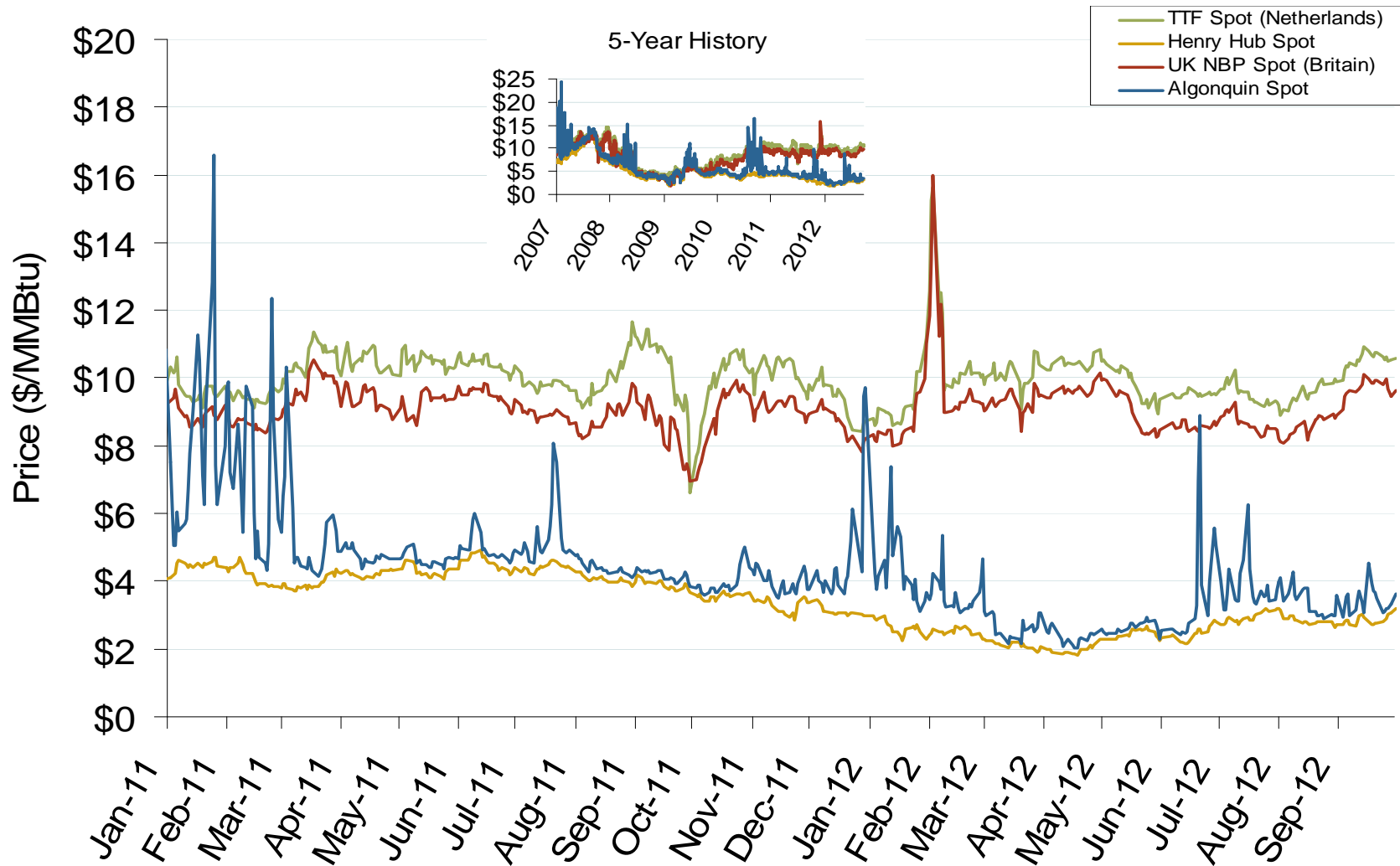


Notes: Everett data includes flows onto the AGT and TGP interstate lines, plus estimates of flows to the Mystic 7 power plant, Keyspan Boston Gas, and LNG trucked out of the terminal. Excludes flows to the Freeport LNG which flows via intrastate pipelines and flows to the Mystic 8 and 9 power plants.

Source: Derived from *Bentek Energy* data

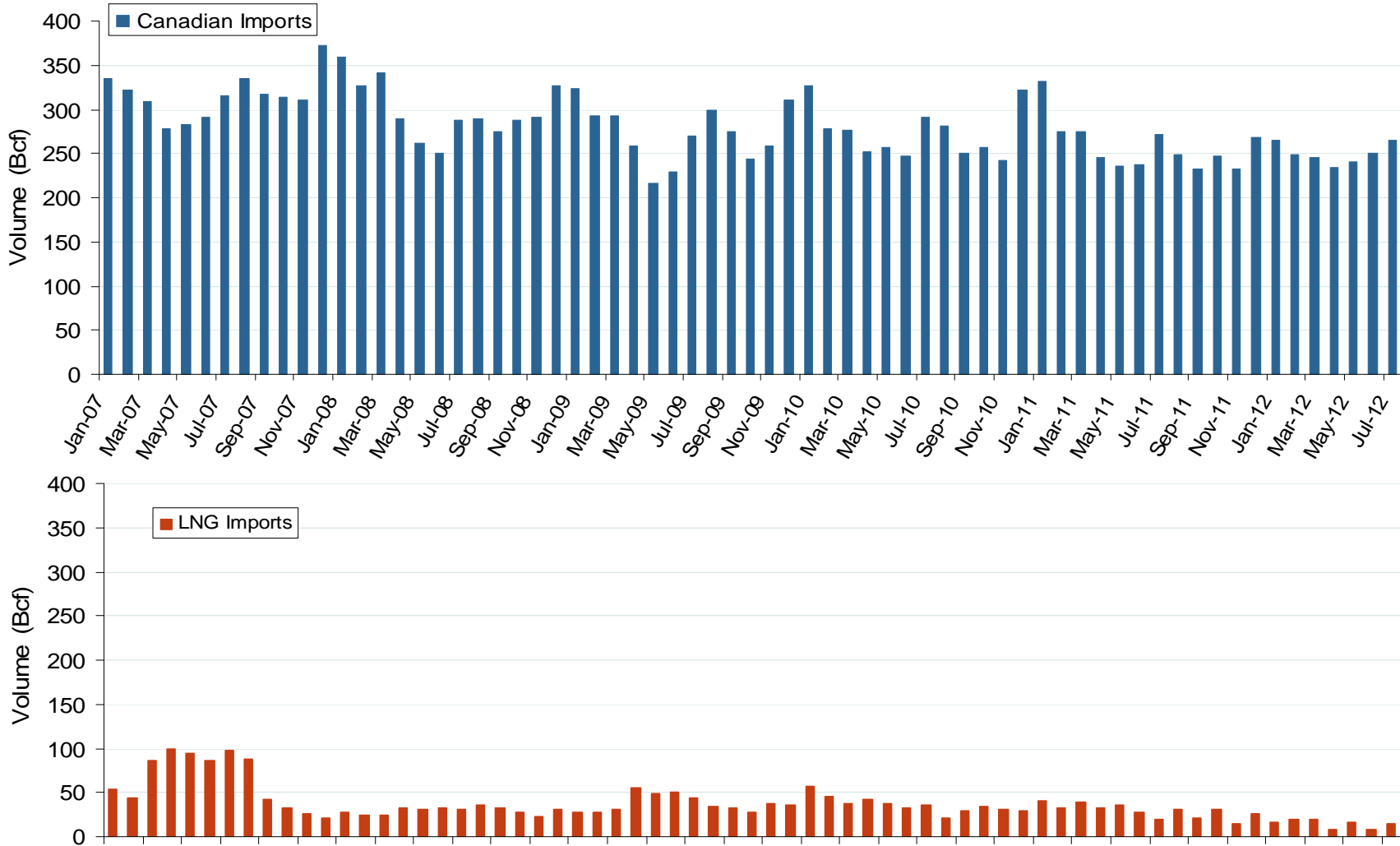
Updated: October 02, 2012

Atlantic Basin European and US Spot Natural Gas Prices

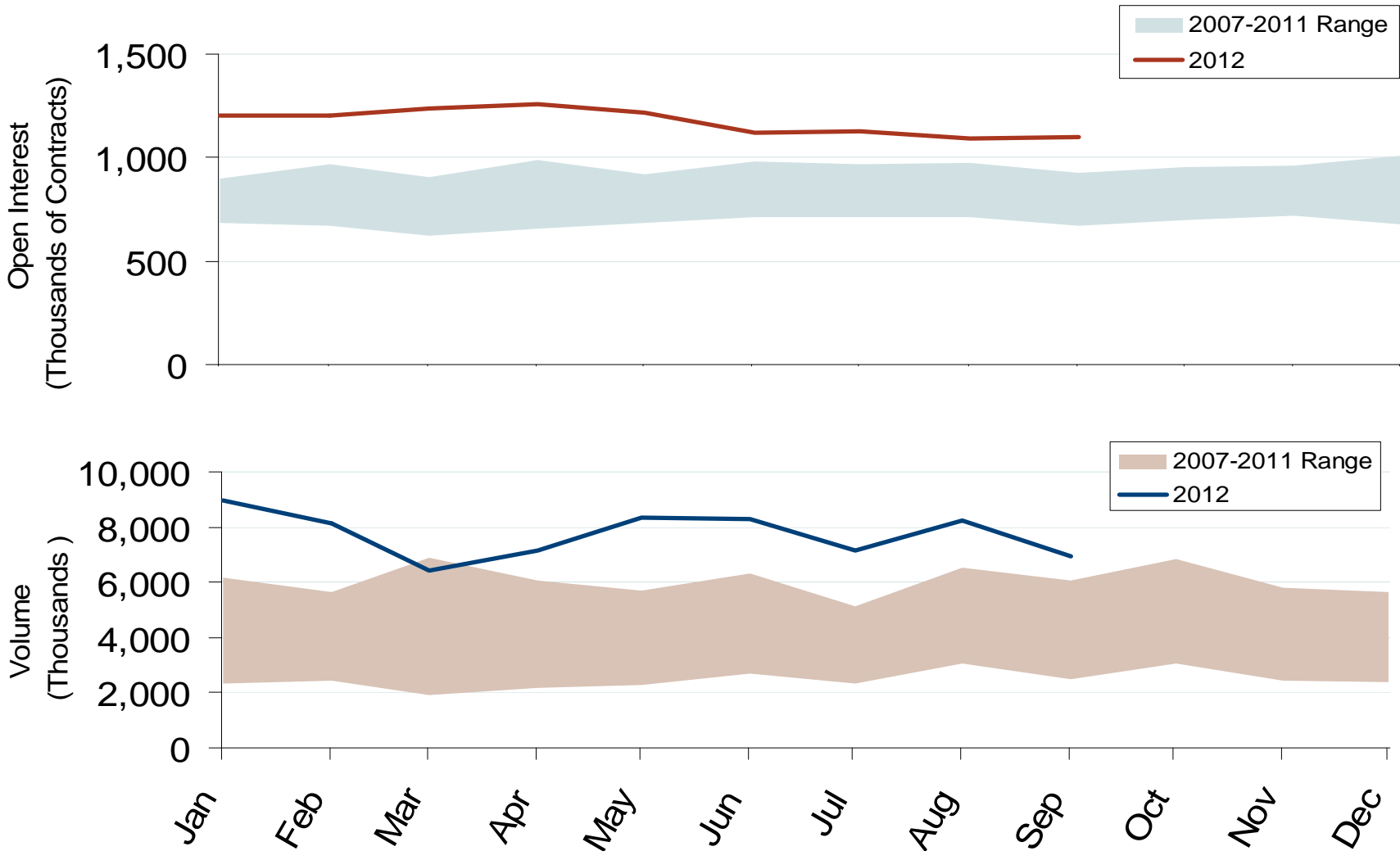


Federal Energy Regulatory Commission • Market Oversight • www.ferc.gov/oversight

Canadian and LNG Natural Gas Imports Into the U.S.

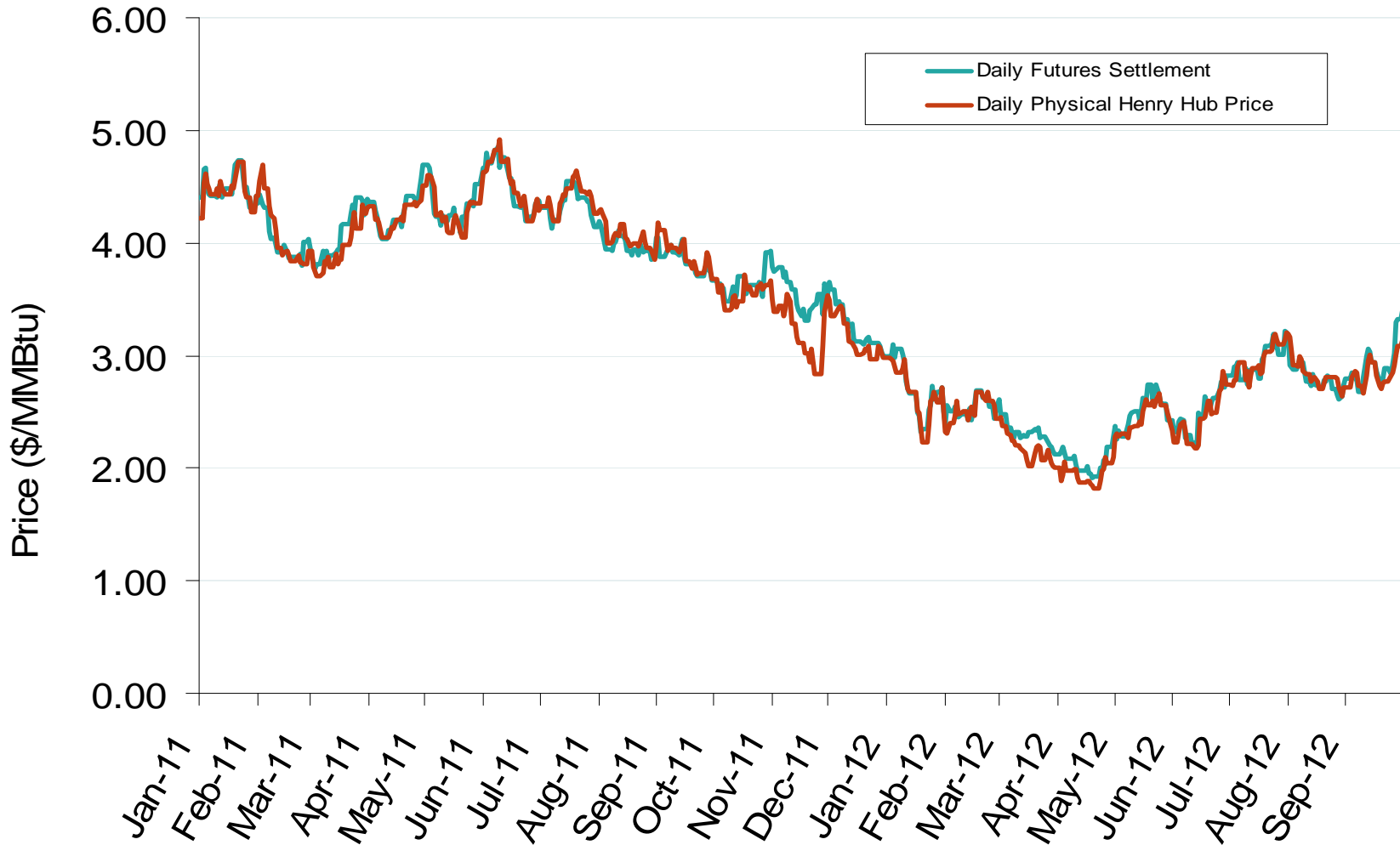


Nymex NG Futures Month-End Open Interest and Monthly Volume



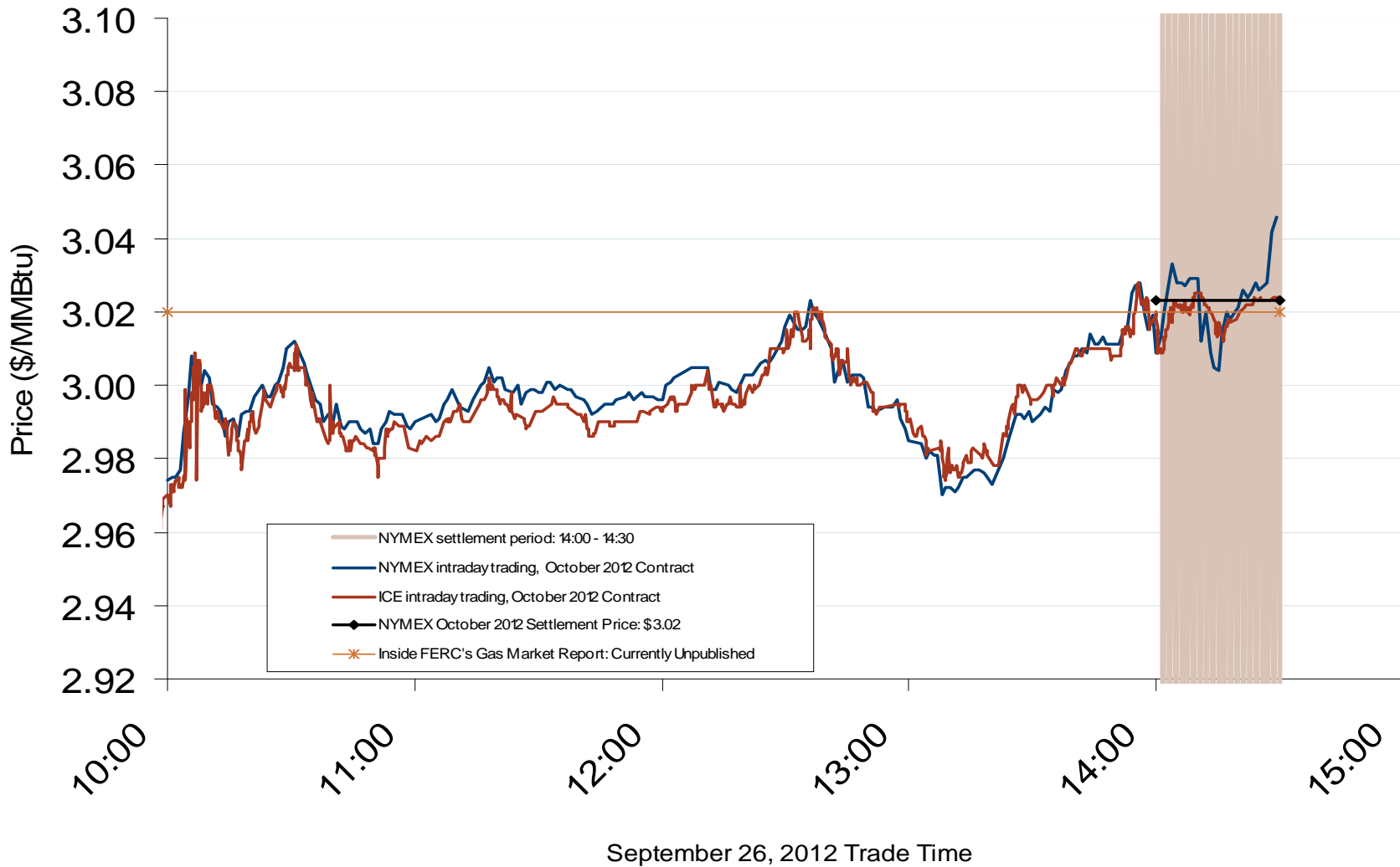
Federal Energy Regulatory Commission • Market Oversight • www.ferc.gov/oversight

Daily Physical Index Price & Daily Futures Settlement Price



Federal Energy Regulatory Commission • Market Oversight • www.ferc.gov/oversight

Nymex and ICE Contract Final Settlement - September 2012



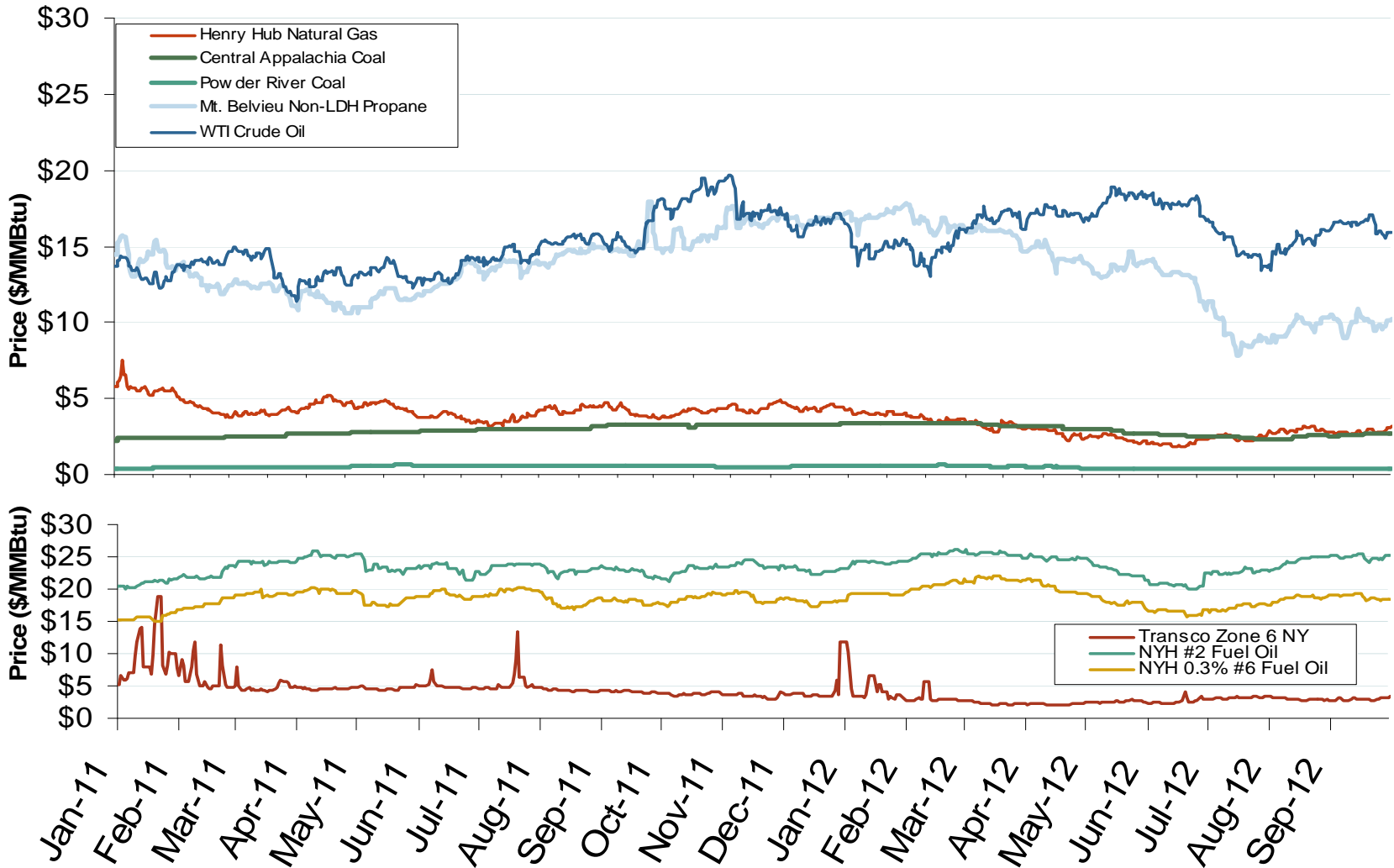
Notes: The final settlement day for this Nymex contract is three business days before the start of the contract term (which is the 1st day of the month)

Source: Derived from *Nymex* and *ICE* data
October 2012 Southeast Snapshot Report

Updated: October 5, 2012

Federal Energy Regulatory Commission • Market Oversight • www.ferc.gov/oversight

Oil, Coal, Natural Gas and Propane Daily Spot Prices



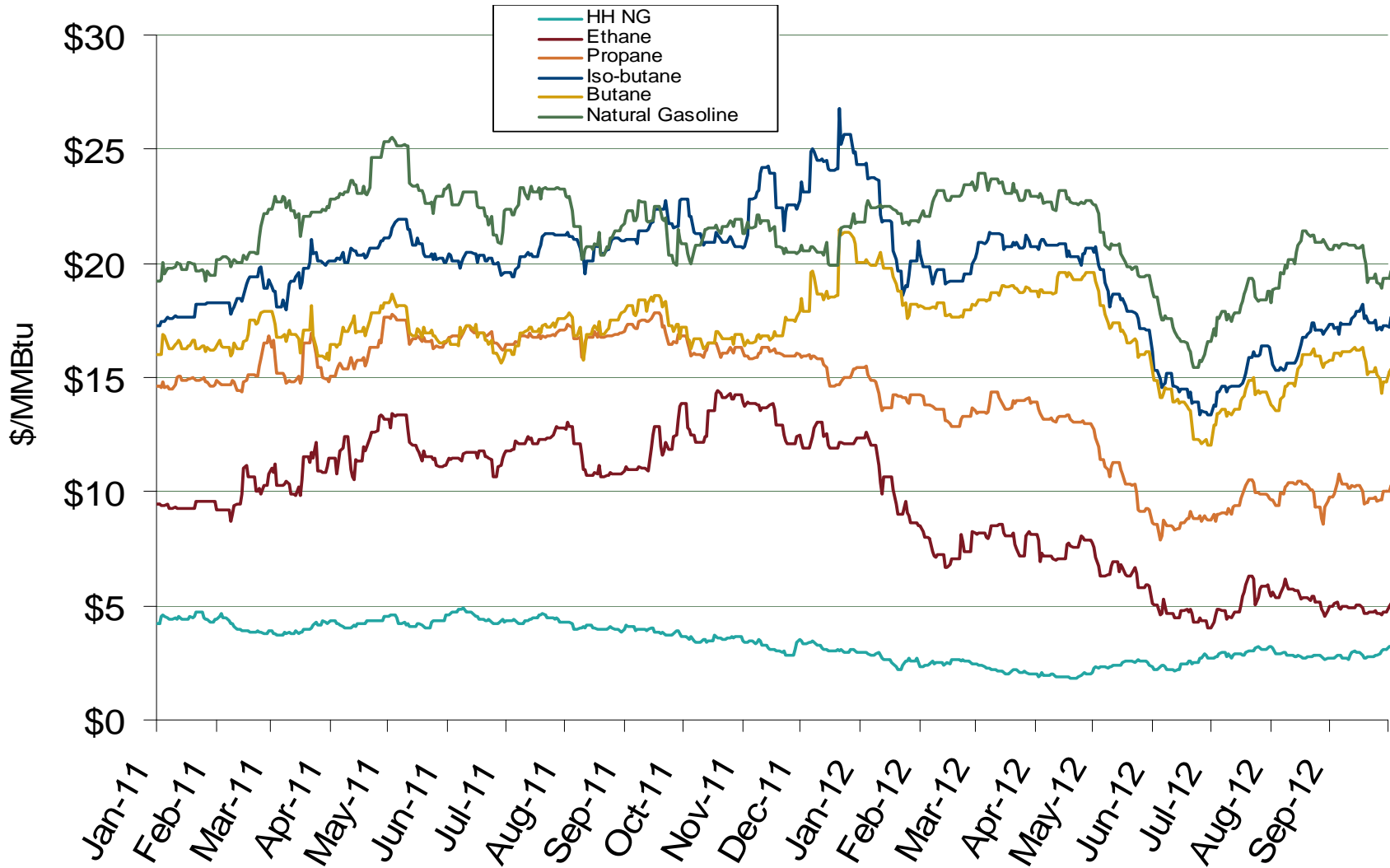
Notes: Coal prices are quoted in \$/ton. Conversion factors to \$/MMBtu are based on contract specifications of 12,000 btus/pound for Central Appalachian coal and 8800 btus/pound for Powder River Basin coal

Source: Derived from ICE and Bloomberg data

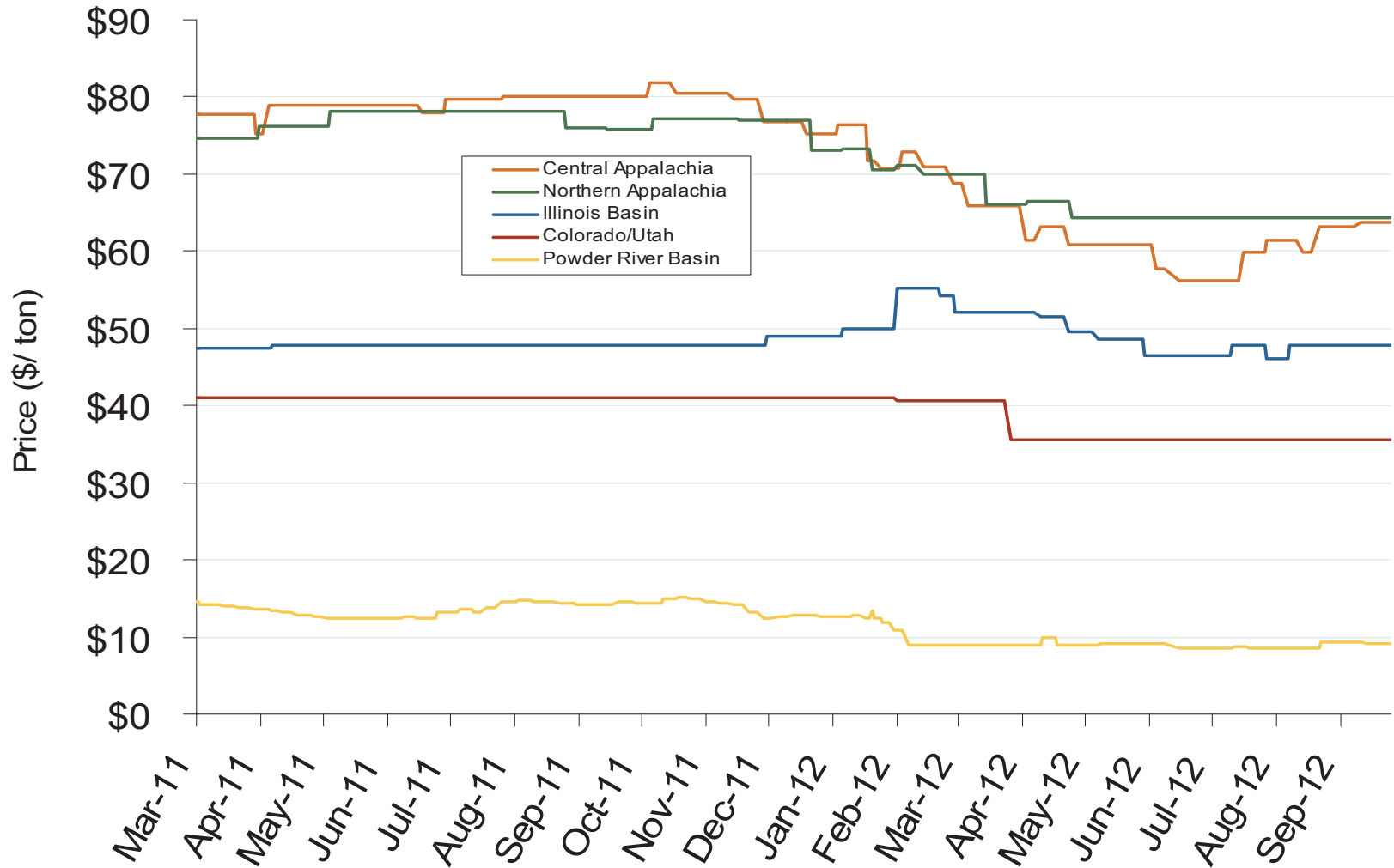
Updated: October 05, 2012

Federal Energy Regulatory Commission • Market Oversight • www.ferc.gov/oversight

U.S. Natural Gas vs. Natural Gas Liquids (NGL) Prices



Central Appalachian and Powder River Basin Coal Prices



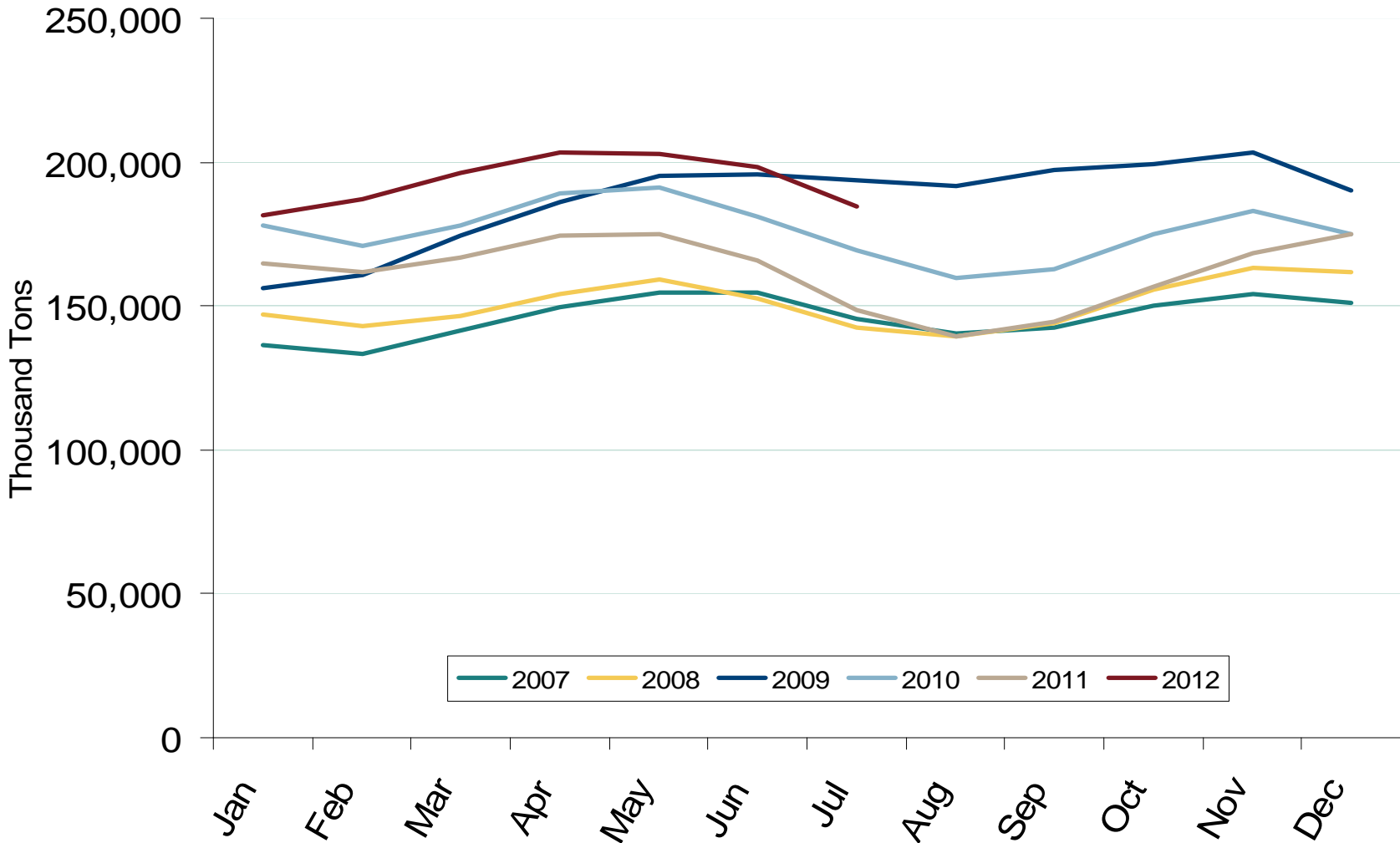
Notes: The Central Appalachian (CAPP) coal is priced at Big Sandy. All others are mine mouth prices. Prices do not include transportation costs to a plant, as those can vary widely by contract specifications. Prices exclude incremental cost of emissions allowances

Source: Derived from Bloomberg data

Updated: October 05, 2012

Federal Energy Regulatory Commission • Market Oversight • www.ferc.gov/oversight

U.S. Coal Stockpiles at Electric Power Generating Facilities



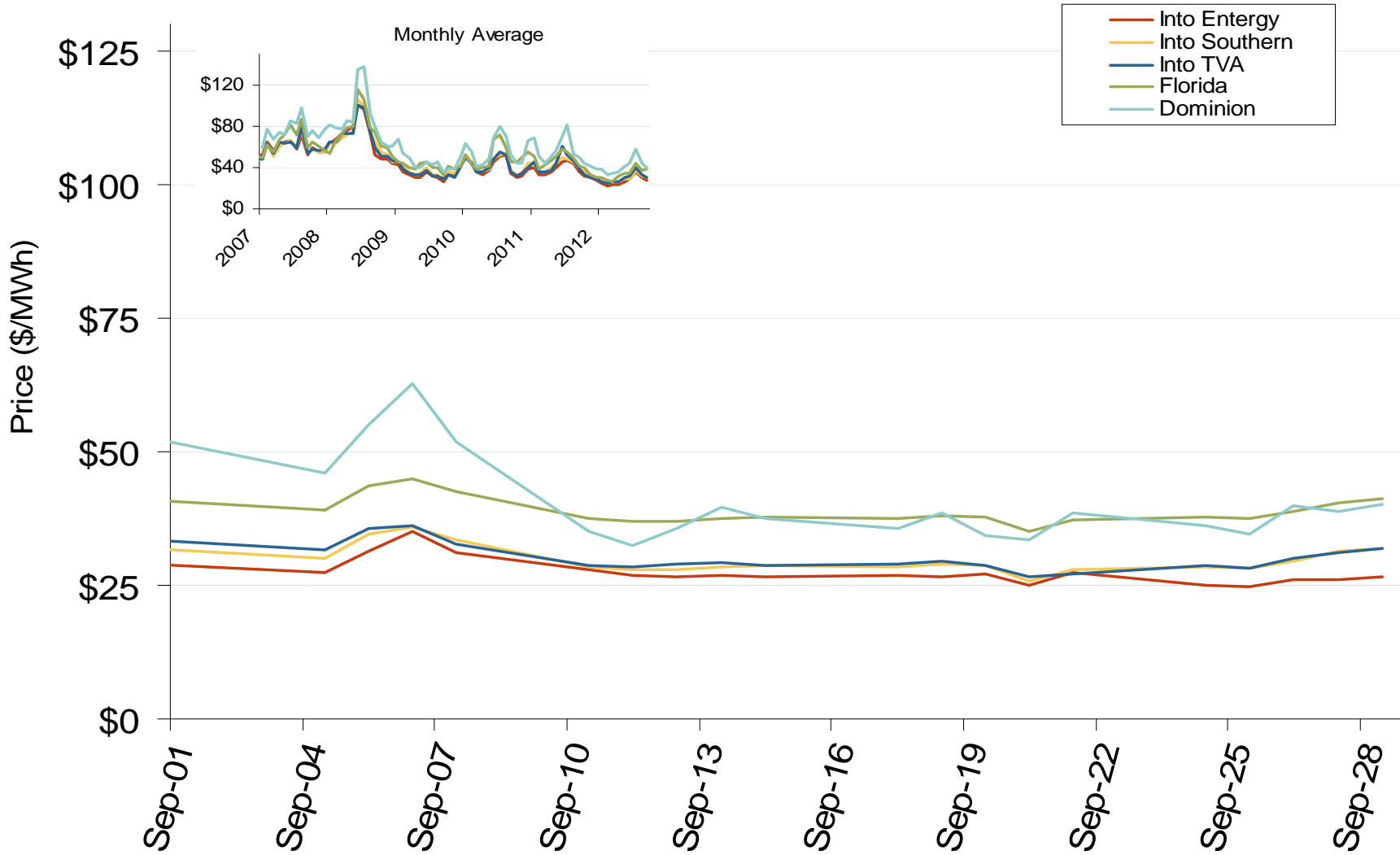
Source: Derived from EIA data. Excludes Industrial and Commercial Plants
October 2012 Southeast Snapshot Report



Electricity Markets

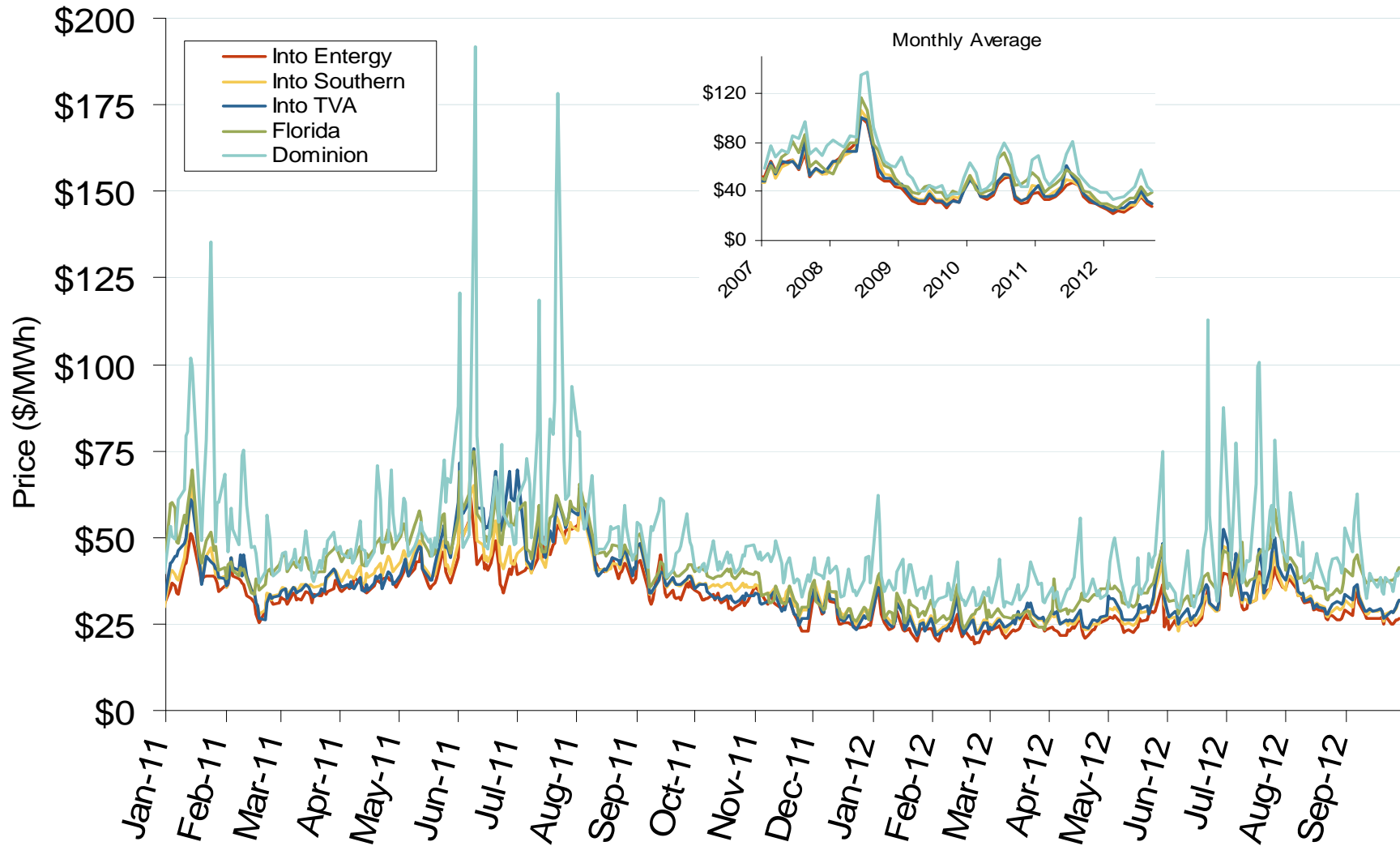
Federal Energy Regulatory Commission • Market Oversight • www.ferc.gov/oversight

Southeastern Daily Index Day-Ahead On-Peak Prices



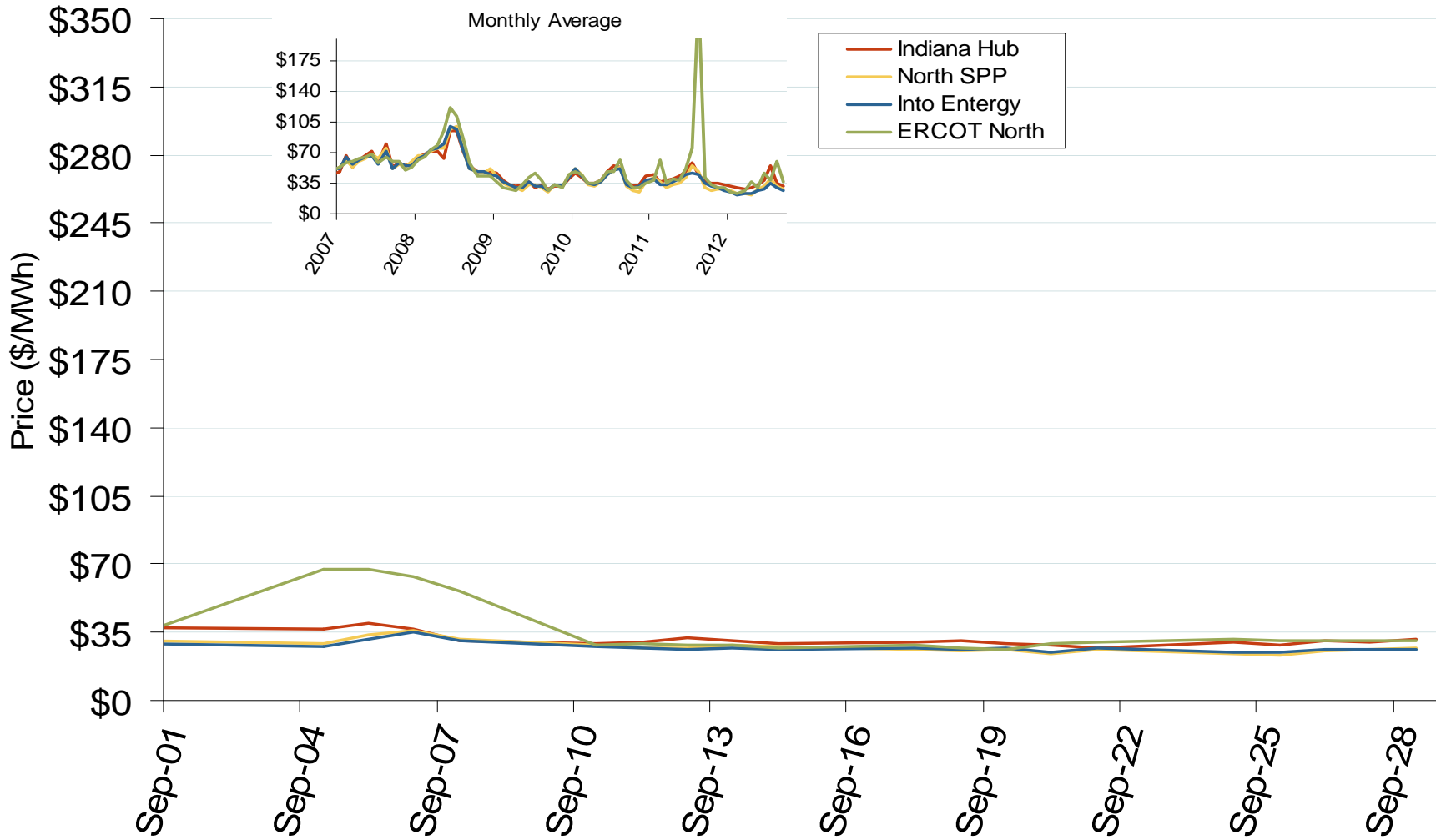
Federal Energy Regulatory Commission • Market Oversight • www.ferc.gov/oversight

Southeastern Daily Index Day-Ahead On-Peak Prices



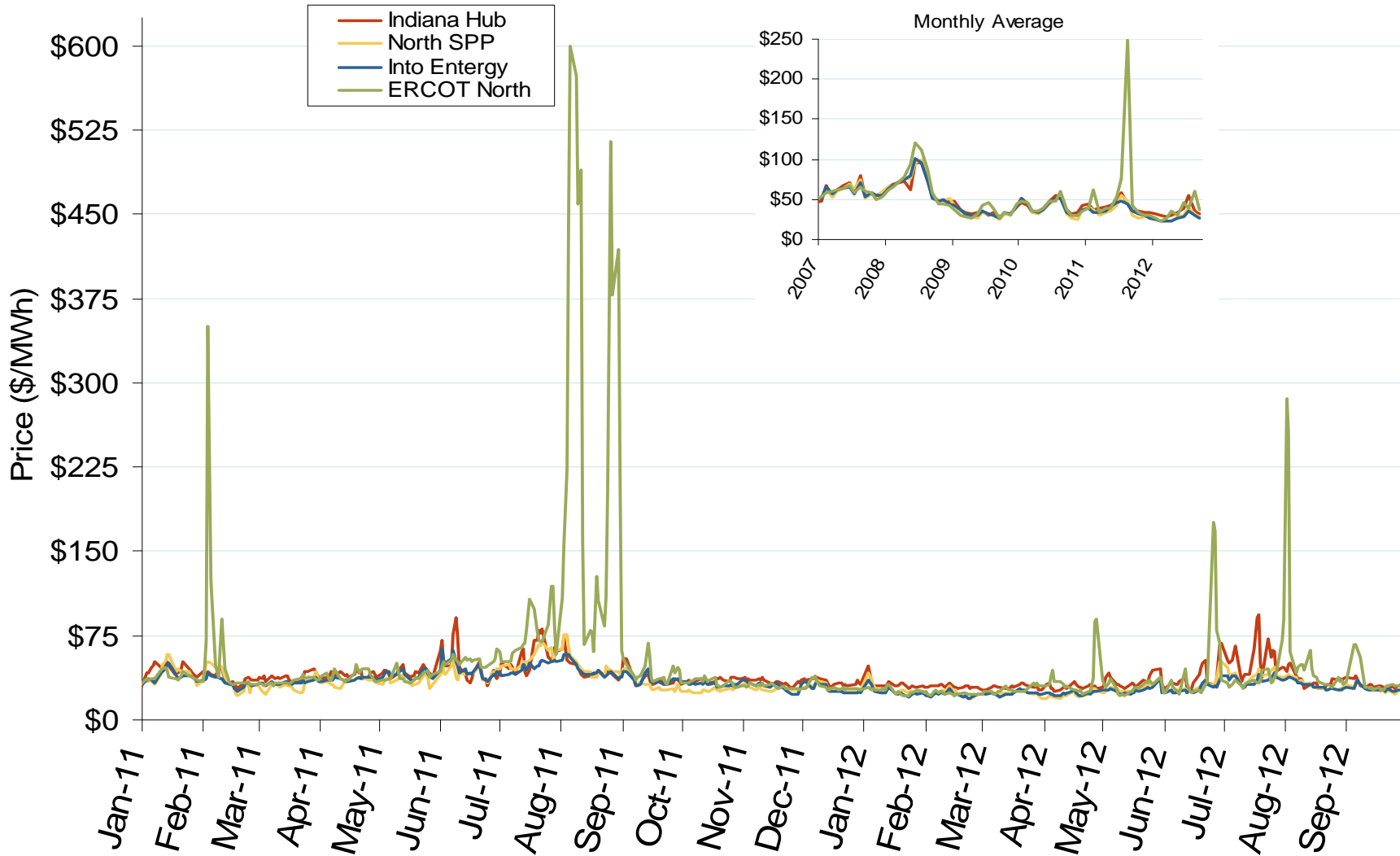
Federal Energy Regulatory Commission • Market Oversight • www.ferc.gov/oversight

Midwestern Daily Index Day-Ahead On-Peak Prices



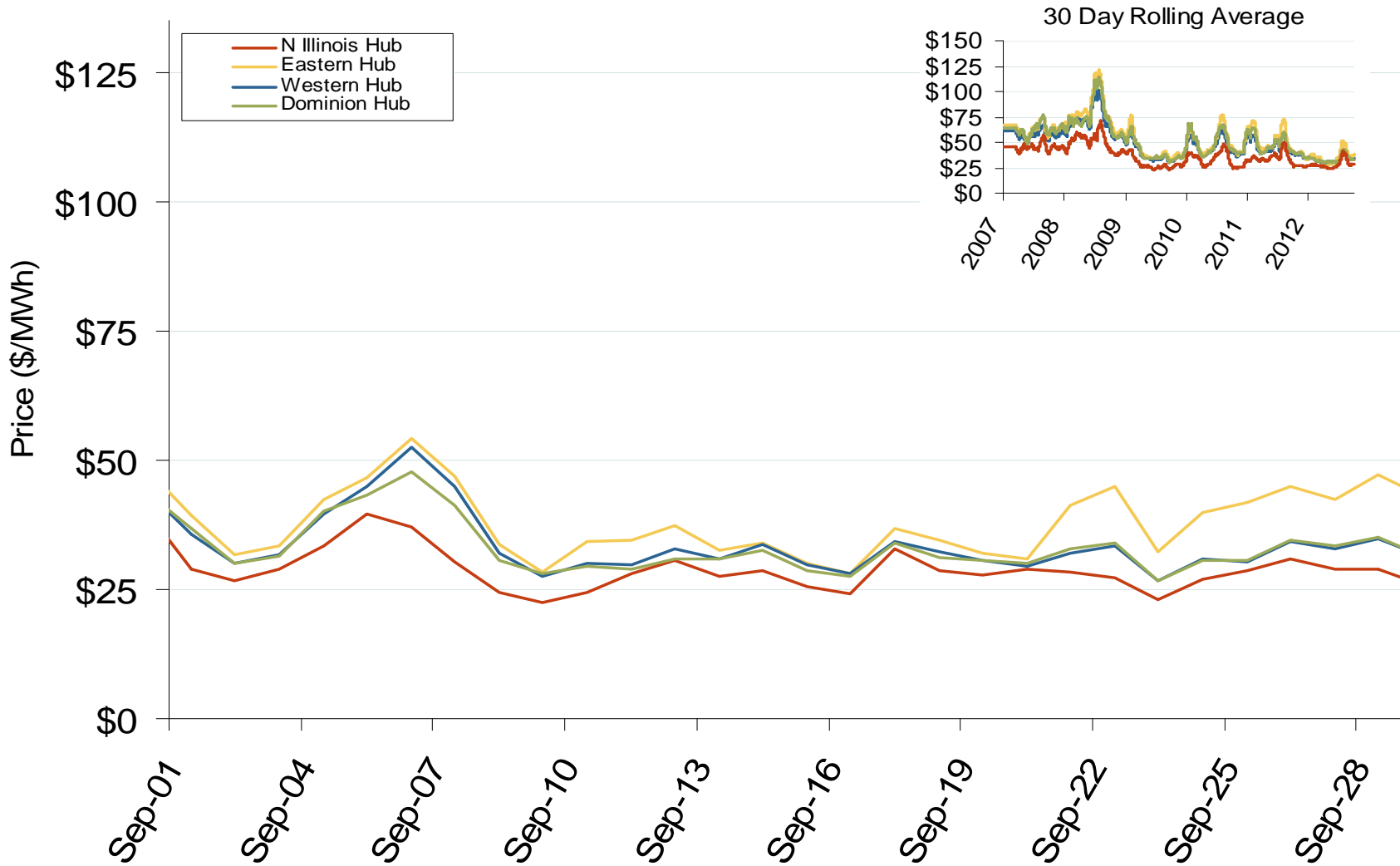
Federal Energy Regulatory Commission • Market Oversight • www.ferc.gov/oversight

Midwestern Daily Index Day-Ahead On-Peak Prices



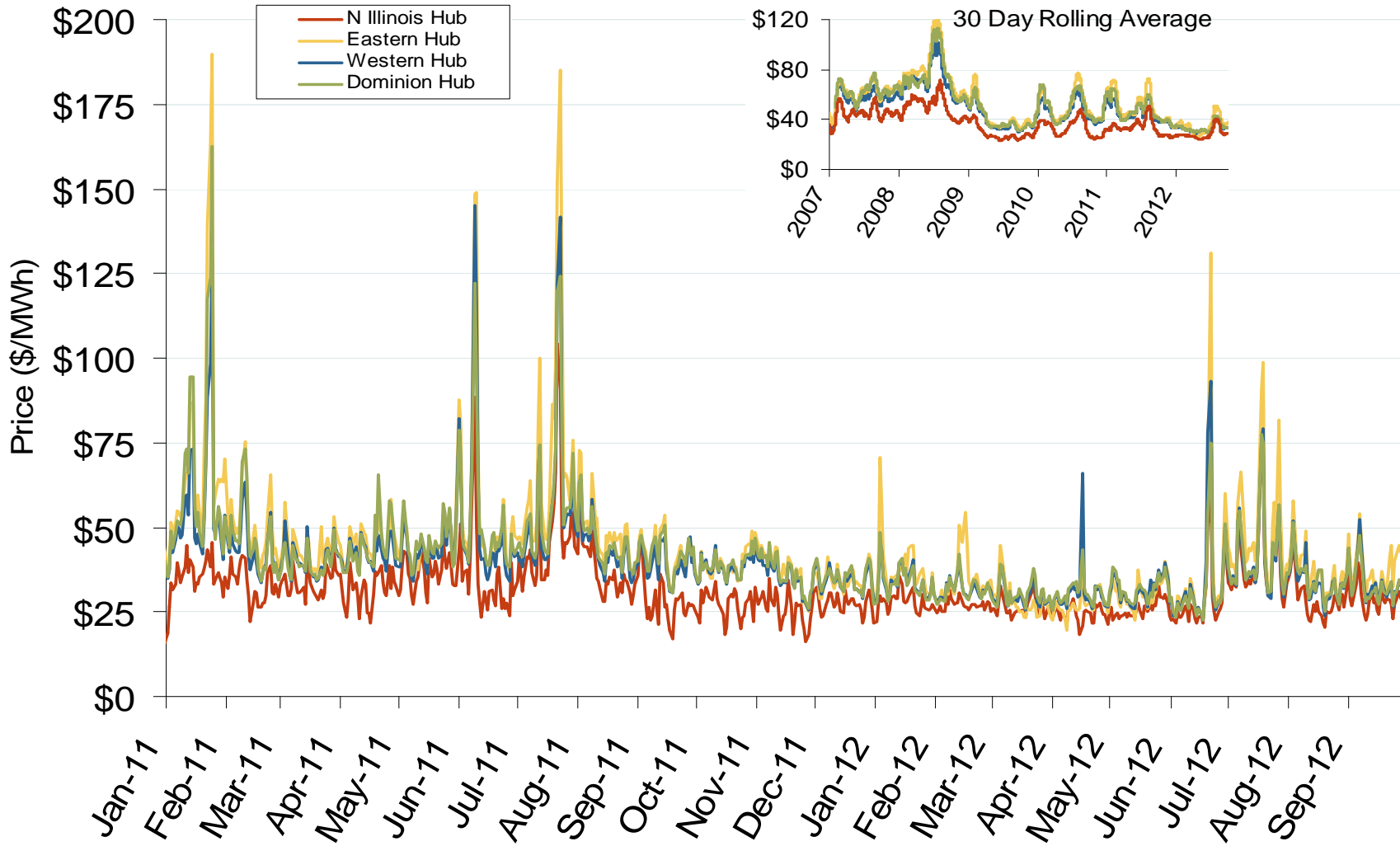
Federal Energy Regulatory Commission • Market Oversight • www.ferc.gov/oversight

Daily Average of PJM Day-Ahead Prices - All Hours



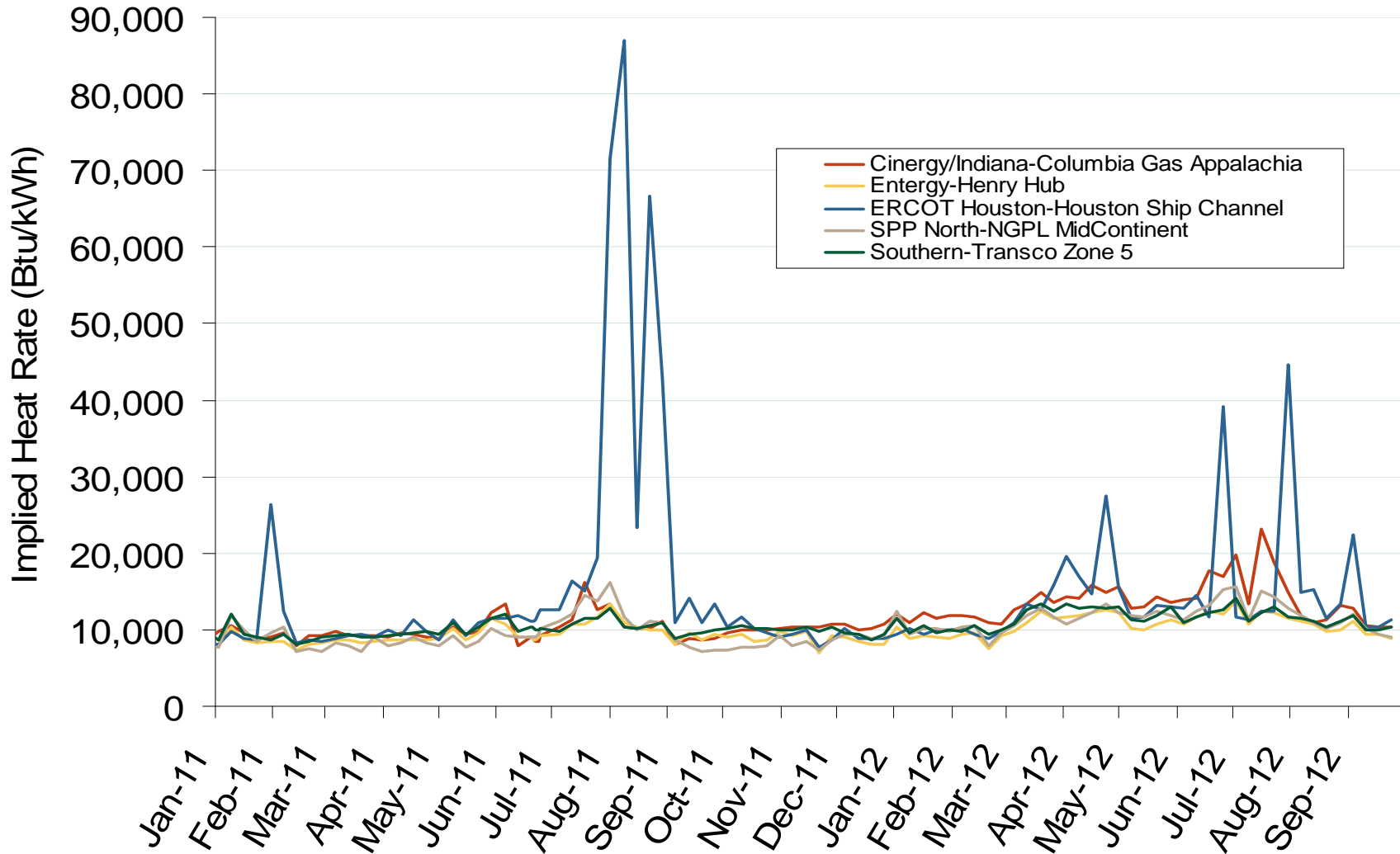
Federal Energy Regulatory Commission • Market Oversight • www.ferc.gov/oversight

Daily Average of PJM Day-Ahead Prices - All Hours



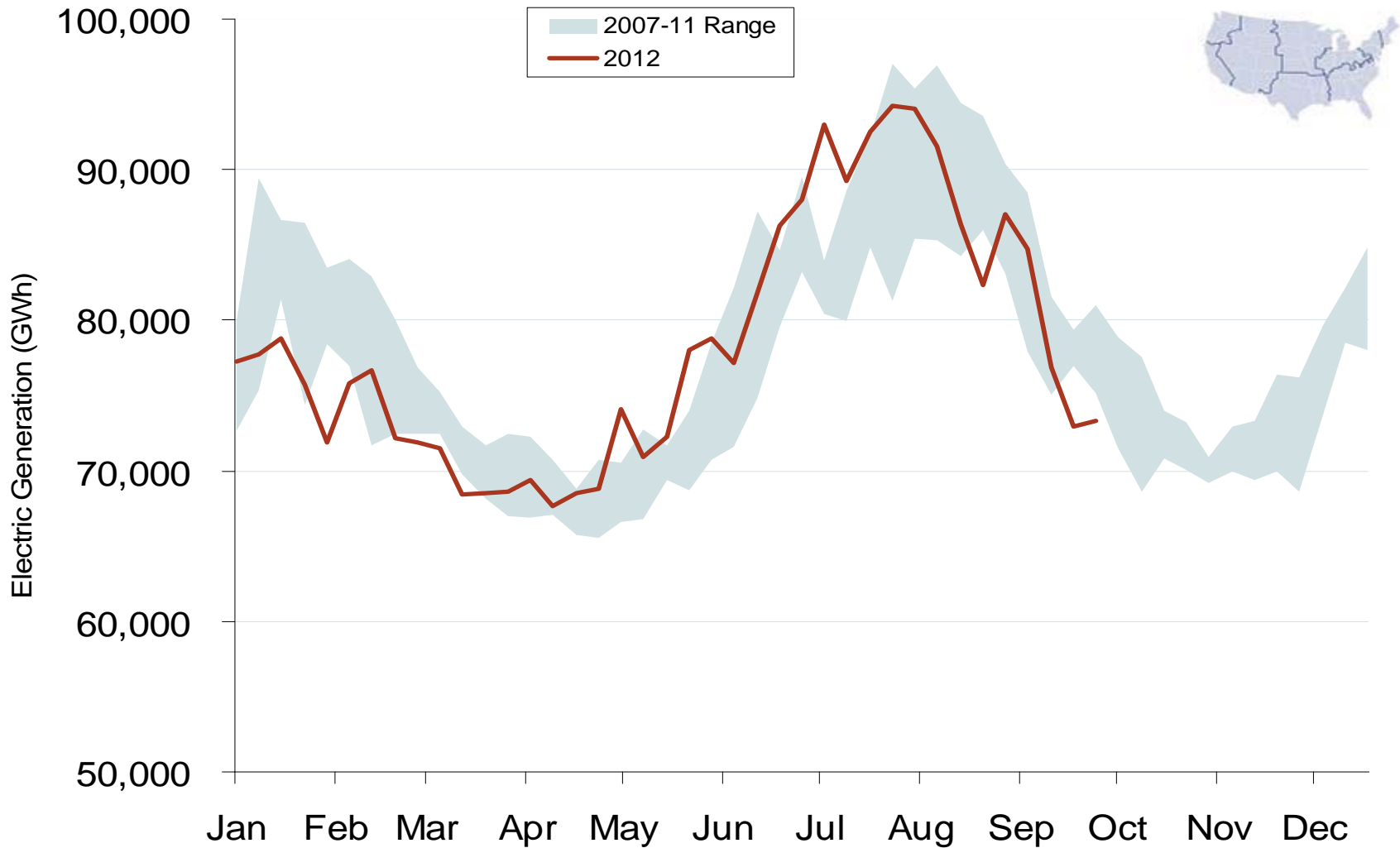
Federal Energy Regulatory Commission • Market Oversight • www.ferc.gov/oversight

Implied Heat Rates at South Central Trading Points - Weekly Avgs.

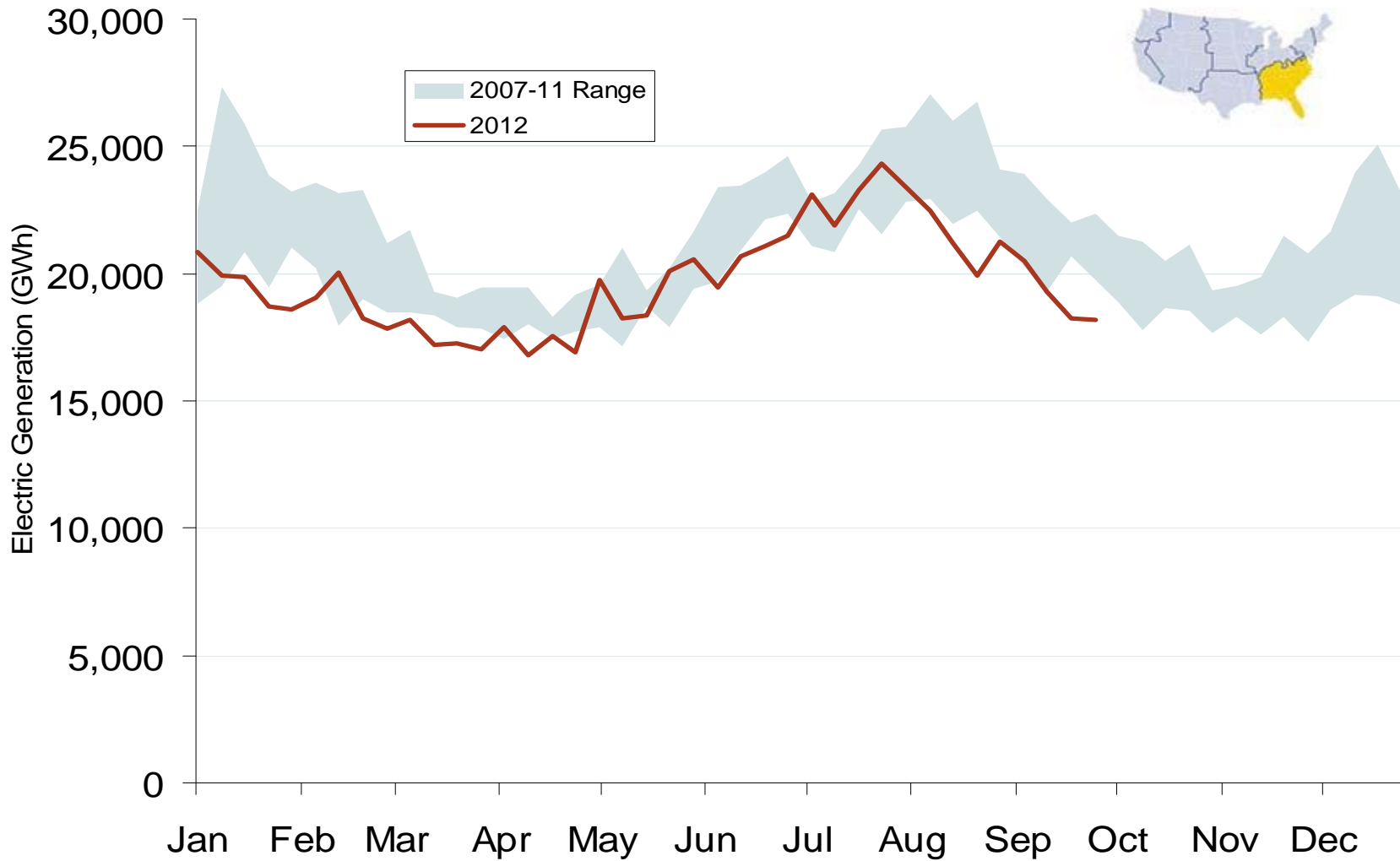


Source: Derived from Platts on-peak electric and natural gas price data
 October 2012 Southeast Snapshot Report

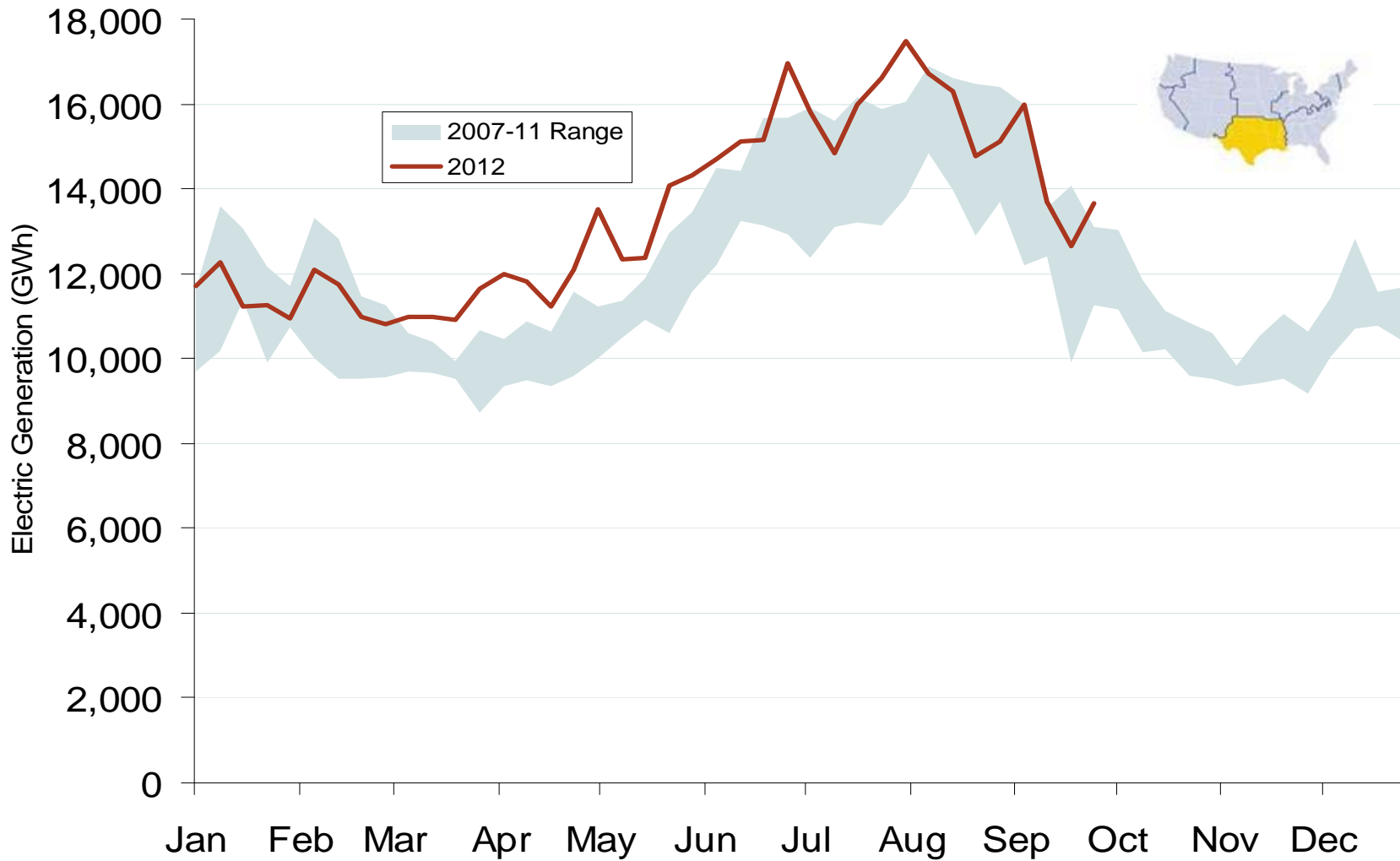
Weekly U.S. Electric Generation Output



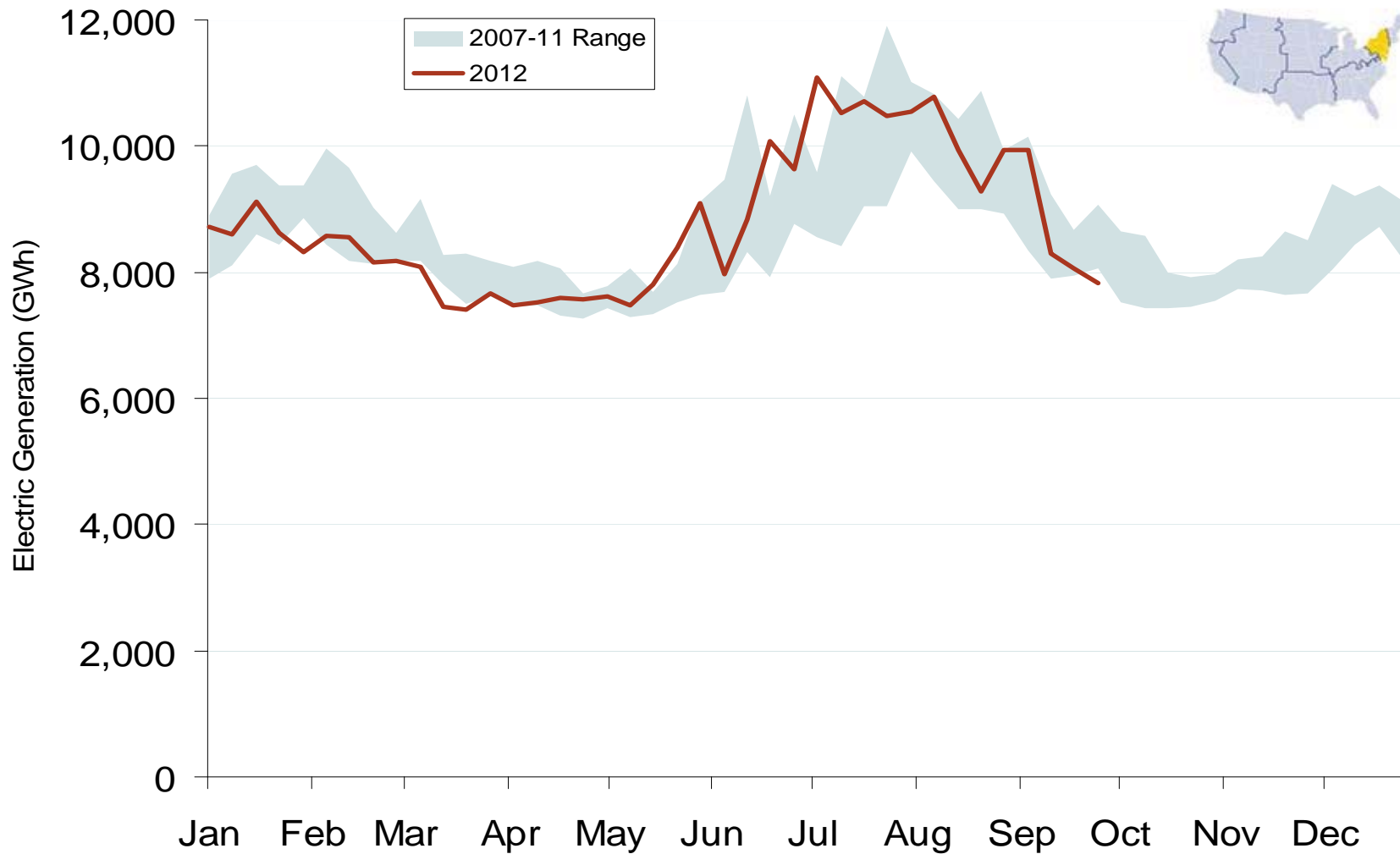
Weekly Generation Output - Southeast



Weekly Generation Output - South Central



Weekly Generation Output - Mid Atlantic



Monthly Southeastern Hydroelectric Generation

