

OE ENERGY MARKET SNAPSHOT

Midwest States Version – September 2012 Data

Office of Enforcement
Federal Energy Regulatory Commission
October 2012



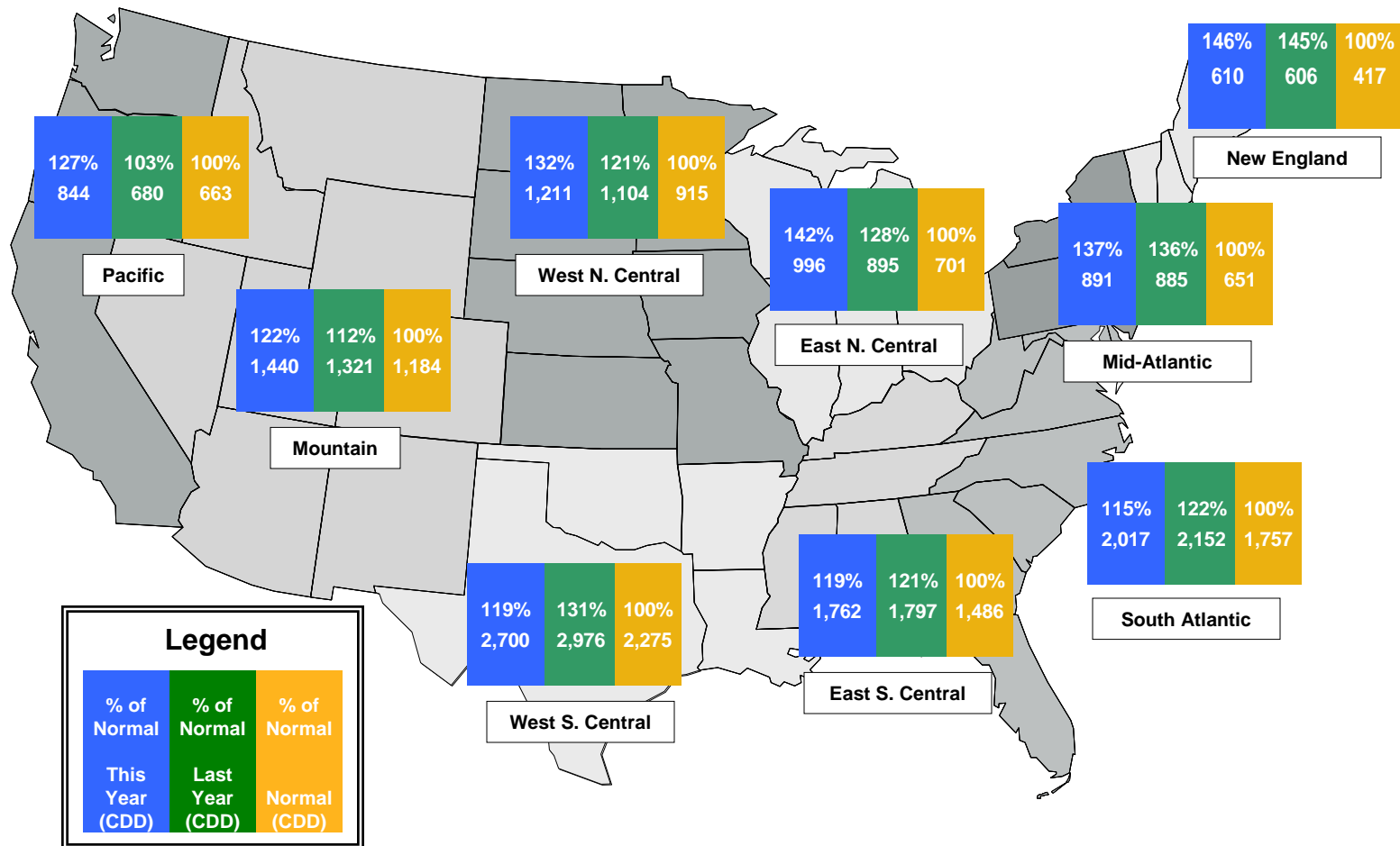
Infrastructure Report

September Infrastructure Report



Weather

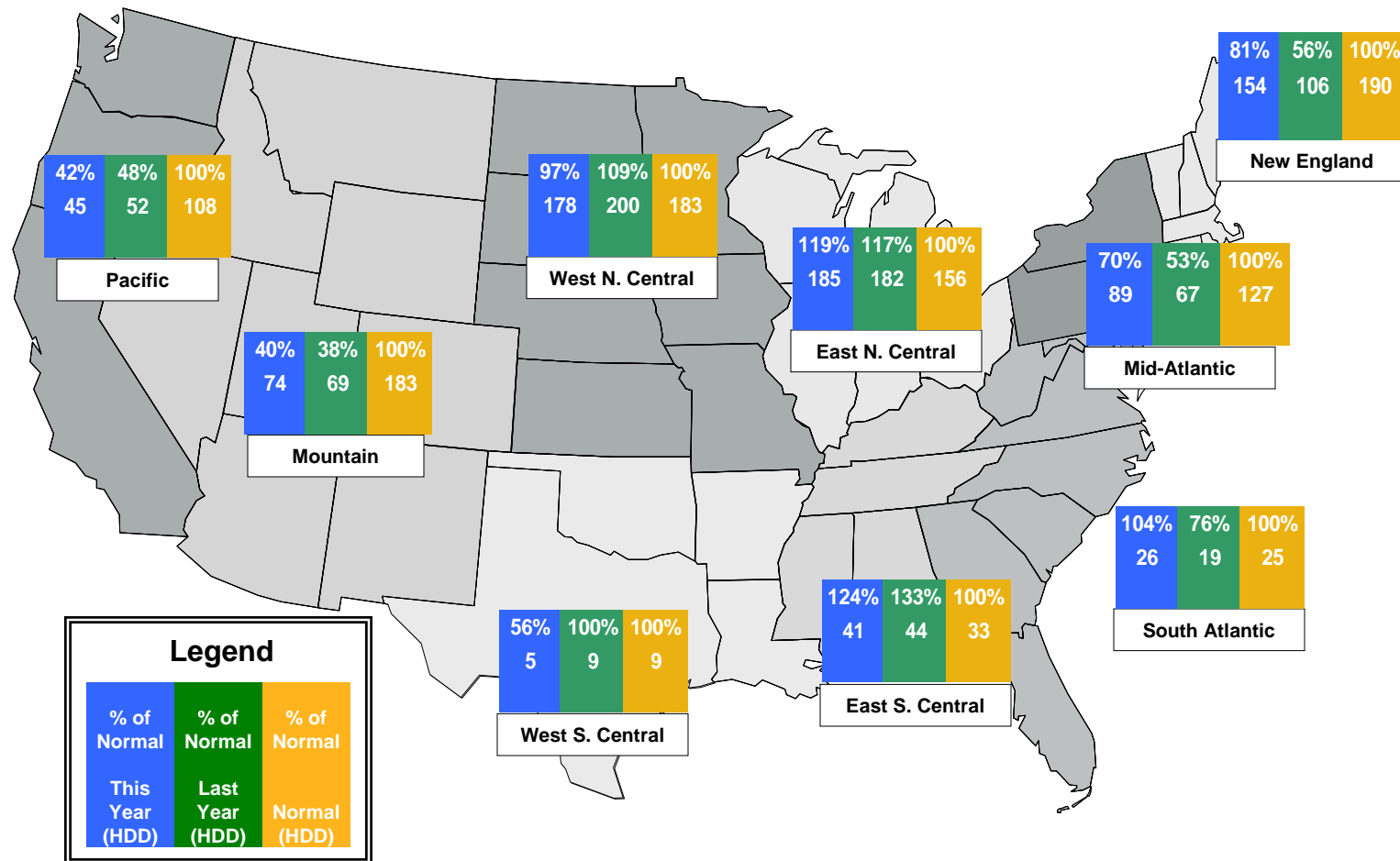
Regional Cooling Degree Days – January to September 2012



Source: Derived from NOAA data. Normal is based on a 30-year average of cooling degree day data.
 October 2012 Midwest Snapshot Report

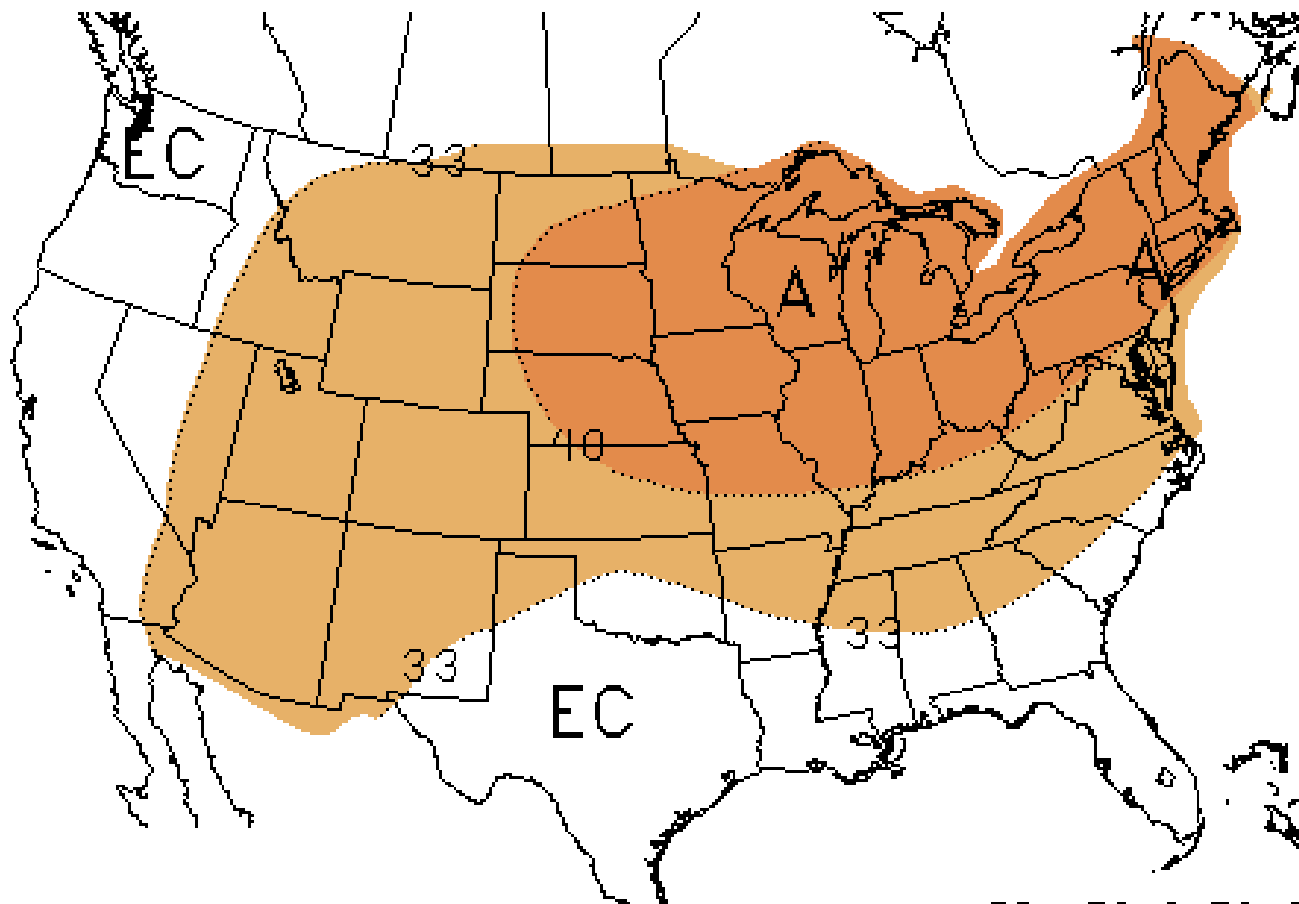
Updated: October 15, 2012

Regional Heating Degree Days – July 2012 to September 2012



Source: Derived from NOAA data. Normal is based on a 30-year average of heating degree day data.
 October 2012 Midwest Snapshot Report

NOAA's 3 Month Temperature Forecast Made September 20, 2012, Valid for October 2012 – December 2012



Note: "A" areas are above normal, "B" areas are below normal and "EC" means equal chance. Normal is based on the last 30 years of data.
Source: Derived from NOAA data.

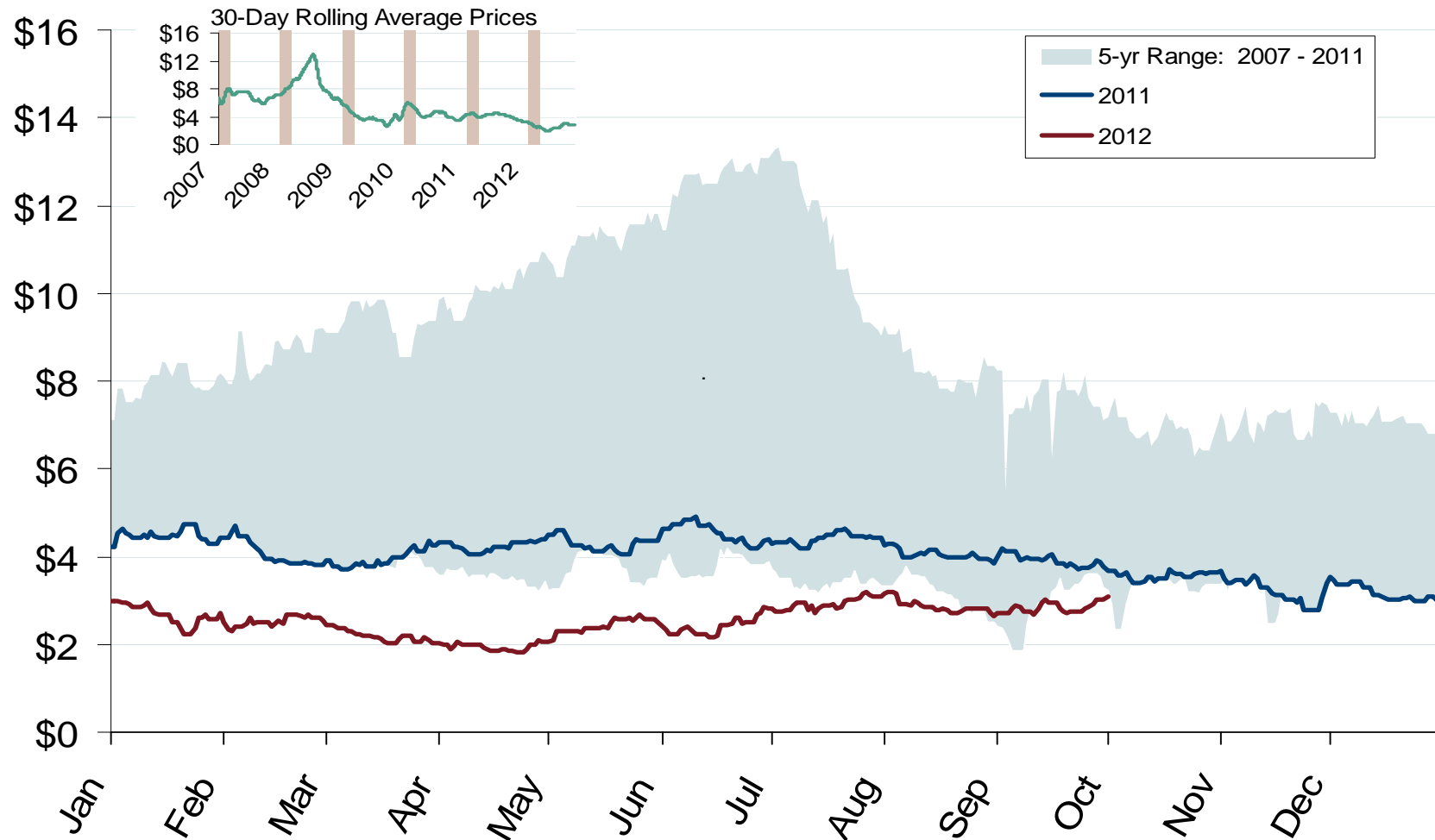
Updated: October 3, 2012



Natural Gas and Fuels Markets

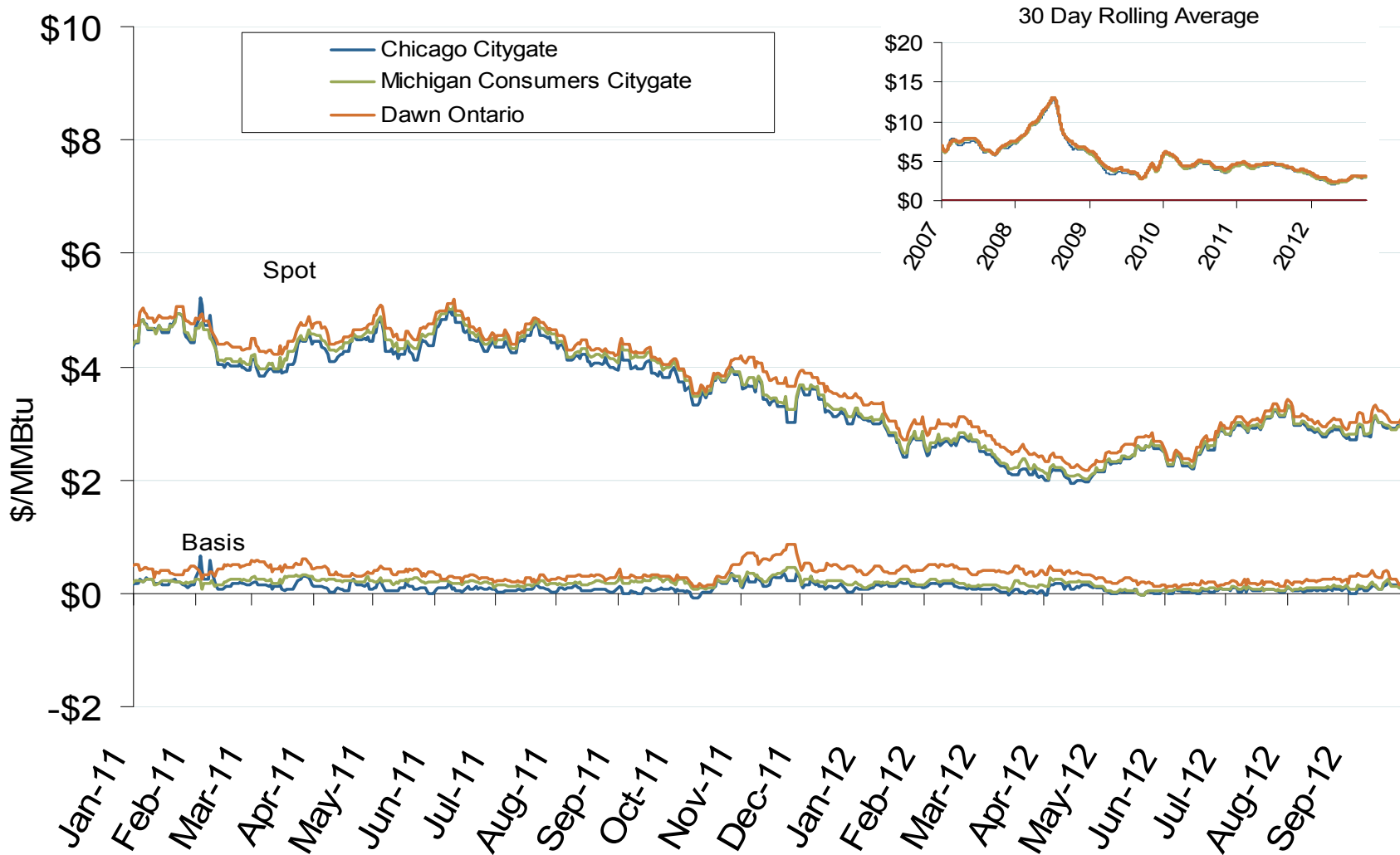
Federal Energy Regulatory Commission • Market Oversight • www.ferc.gov/oversight

Henry Hub Natural Gas Daily Spot Prices



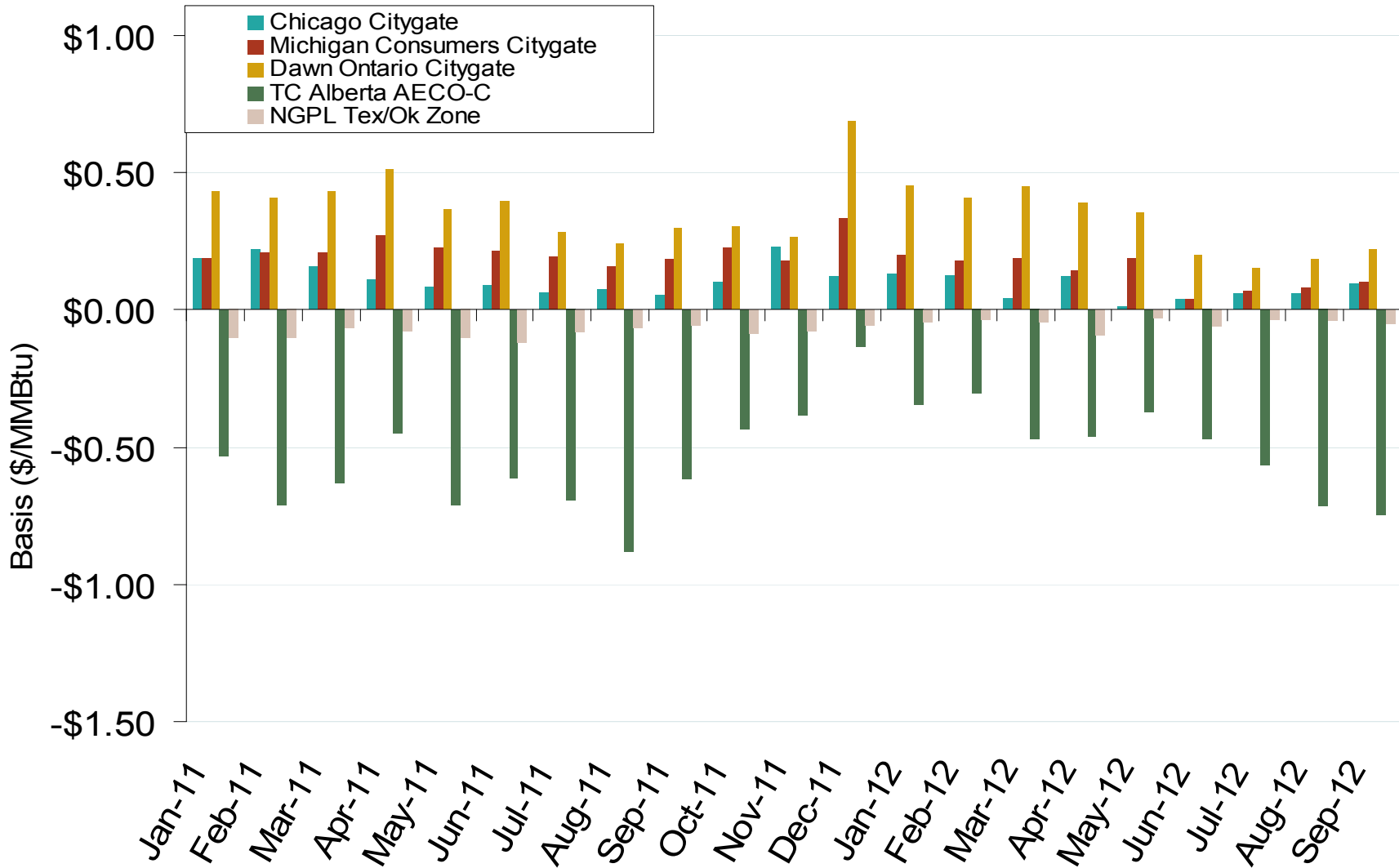
Federal Energy Regulatory Commission • Market Oversight • www.ferc.gov/oversight

Midwestern Day-Ahead Hub Spot Prices and Basis



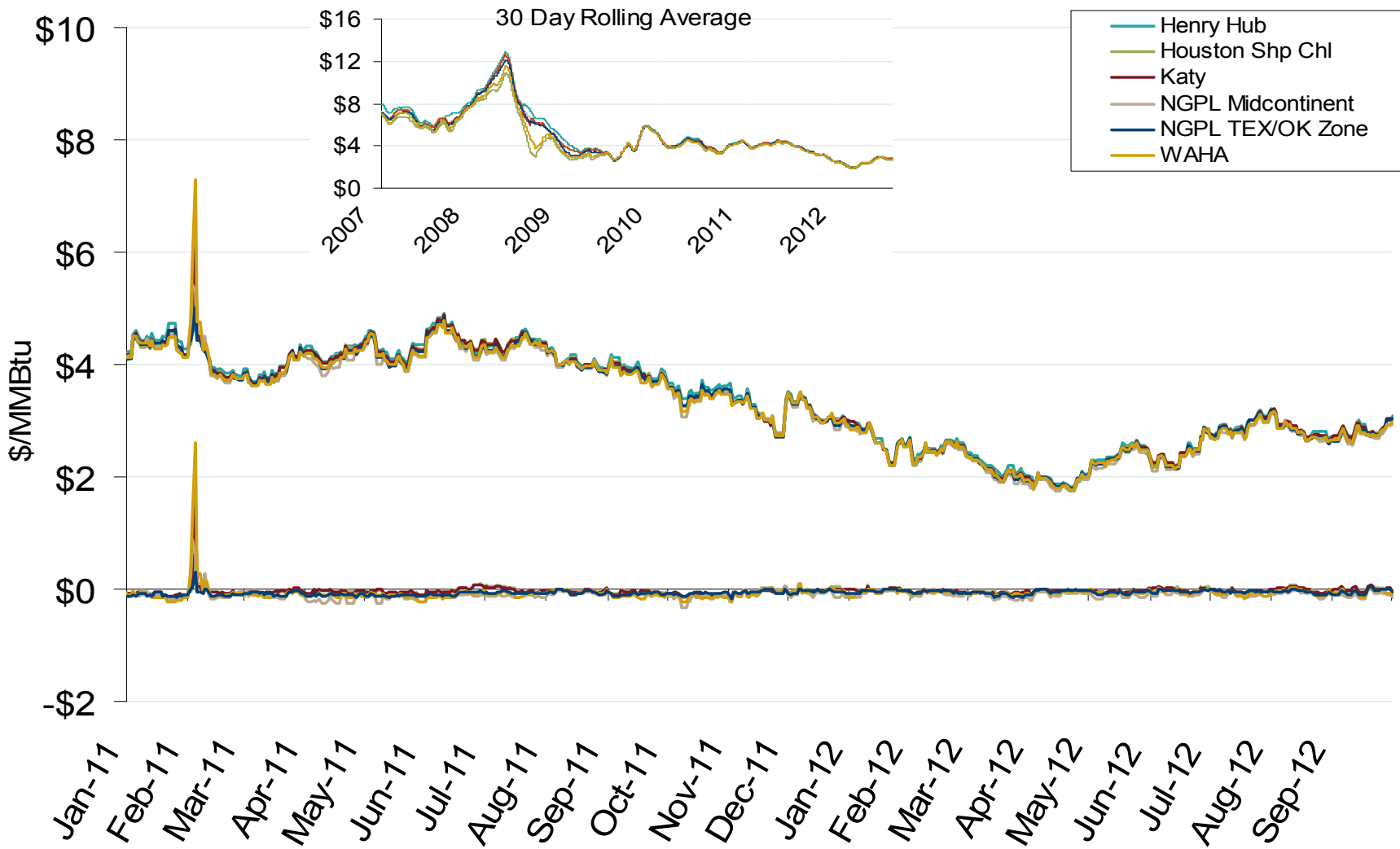
Federal Energy Regulatory Commission • Market Oversight • www.ferc.gov/oversight

Midwestern Monthly Average Basis Value to Henry Hub



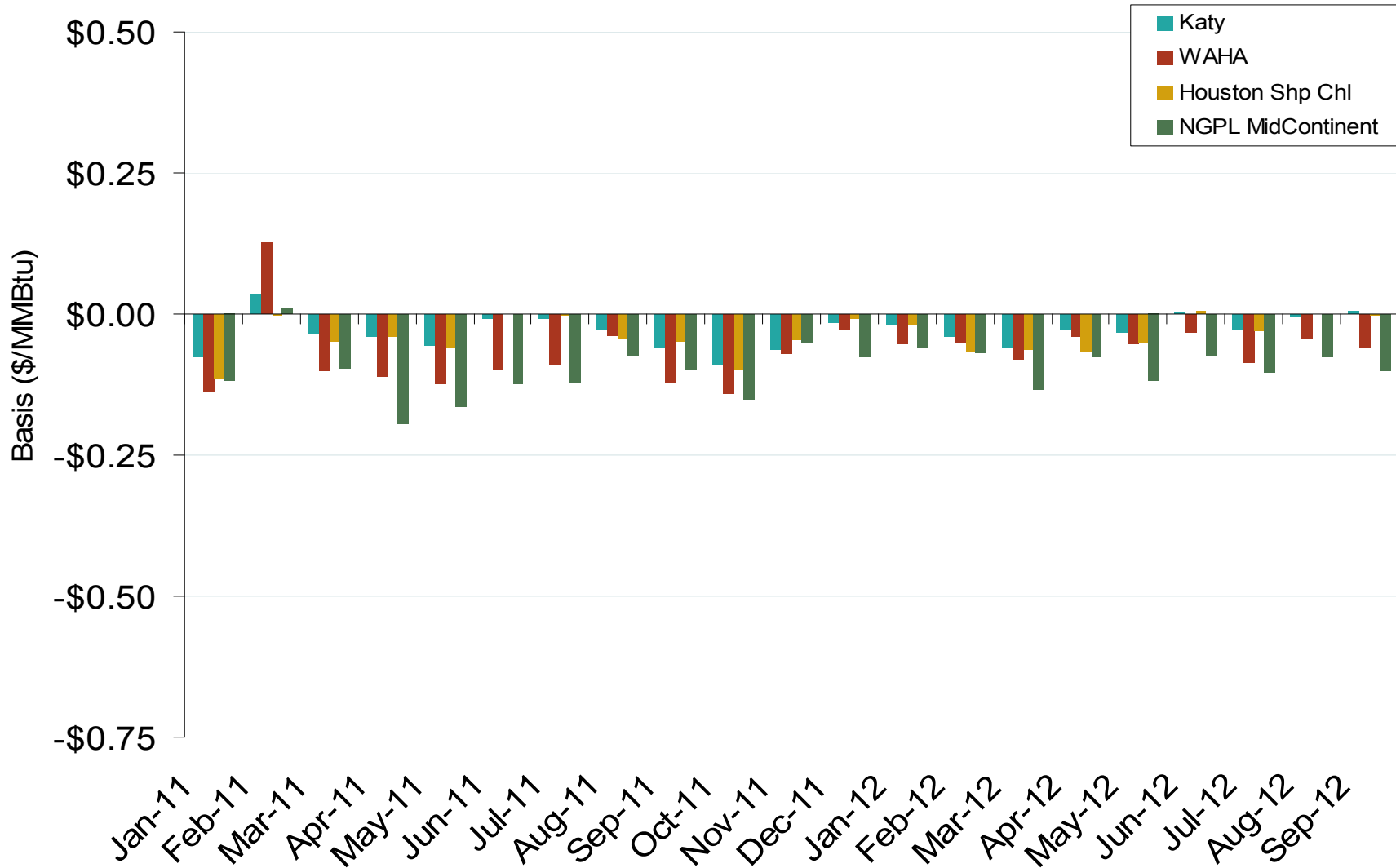
Federal Energy Regulatory Commission • Market Oversight • www.ferc.gov/oversight

Gulf Day-Ahead Hub Spot Prices and Basis

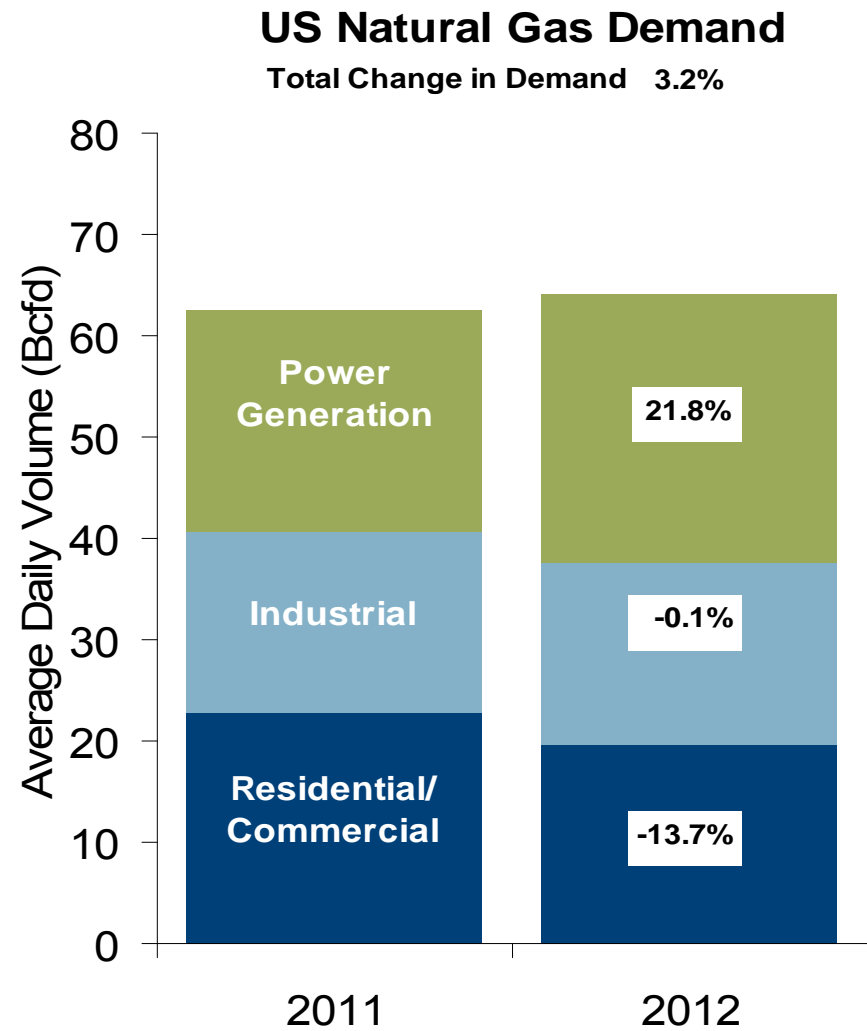
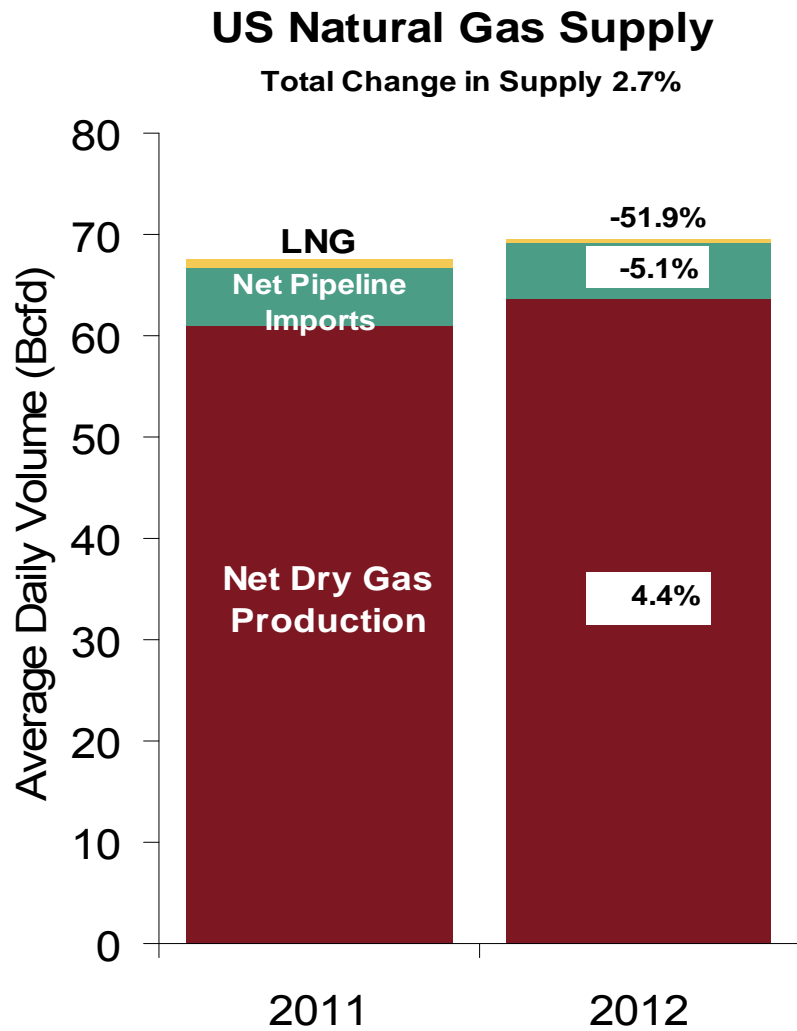


Federal Energy Regulatory Commission • Market Oversight • www.ferc.gov/oversight

Gulf Monthly Average Basis Value to Henry Hub



U.S. NG Supply and Demand 2011 vs. 2012: January - September



Note: Balance includes all amounts not attributable to other categories.

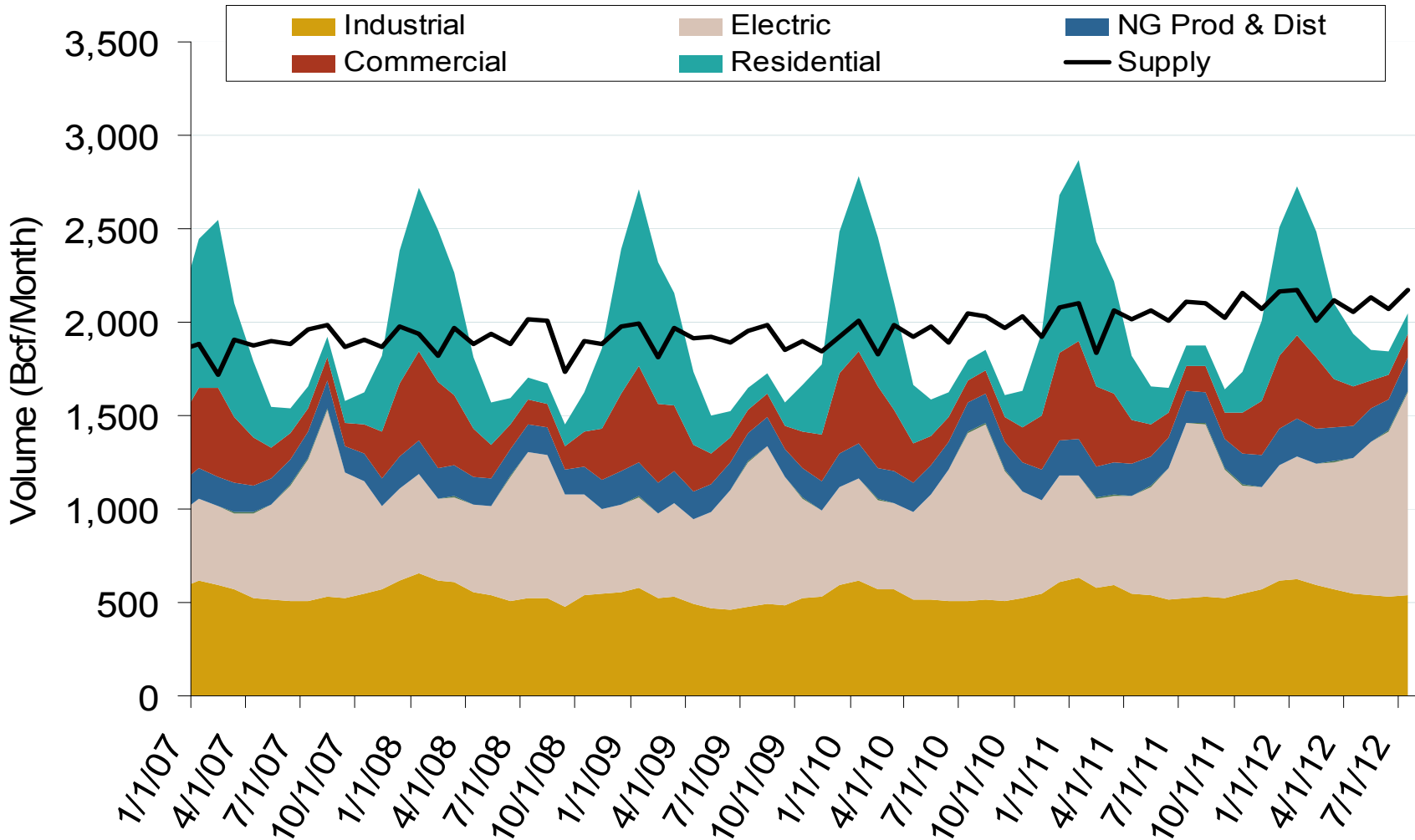
Source: Derived from *Bentek Energy* data

October 2012 Midwest Snapshot Report

Updated: October 15, 2012

Federal Energy Regulatory Commission • Market Oversight • www.ferc.gov/oversight

Annual U.S. Natural Gas Consumption by Sector



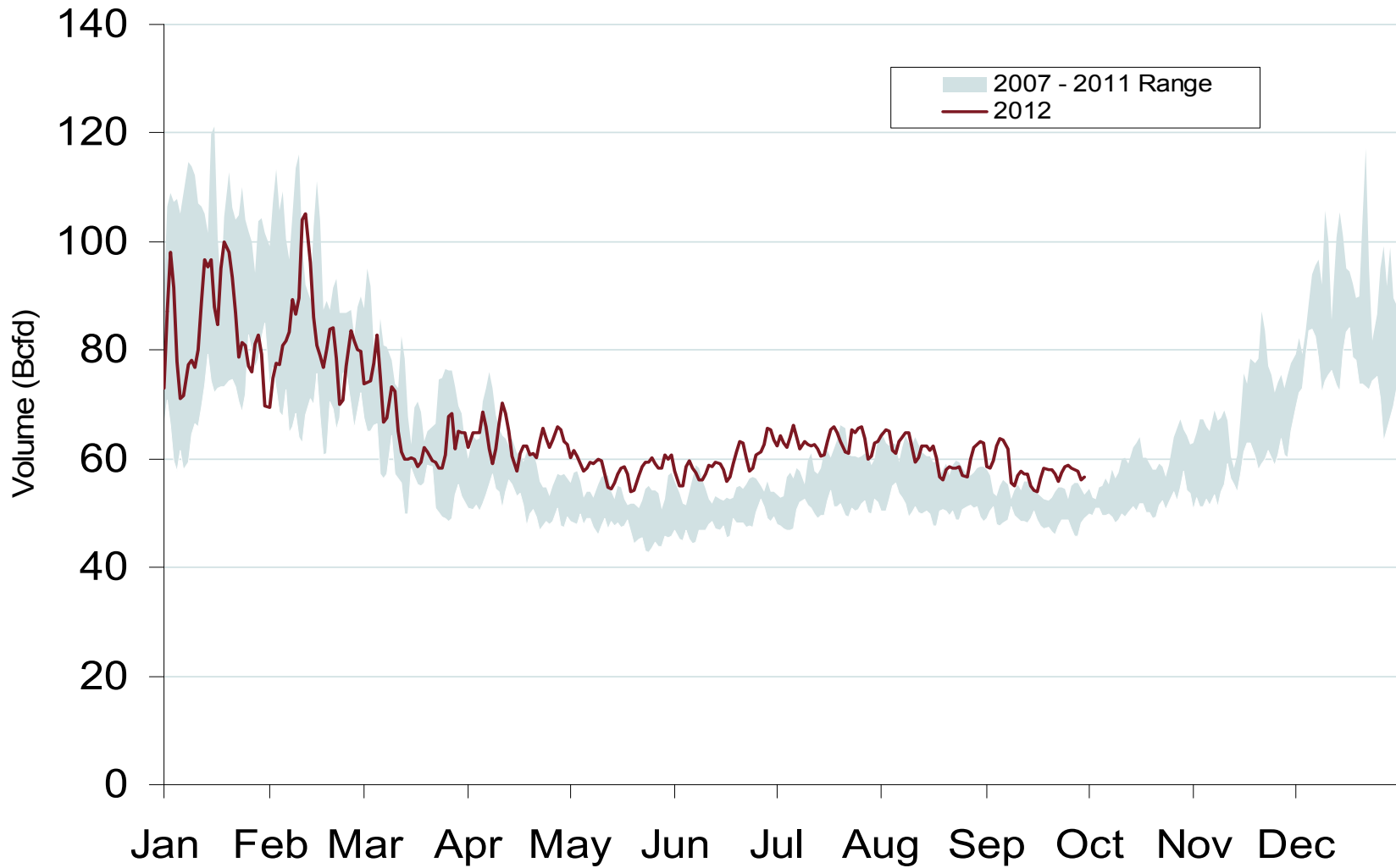
Notes: Supply includes lower 48 state production, net pipeline imports, and LNG imports

Source: Derived from EIA data

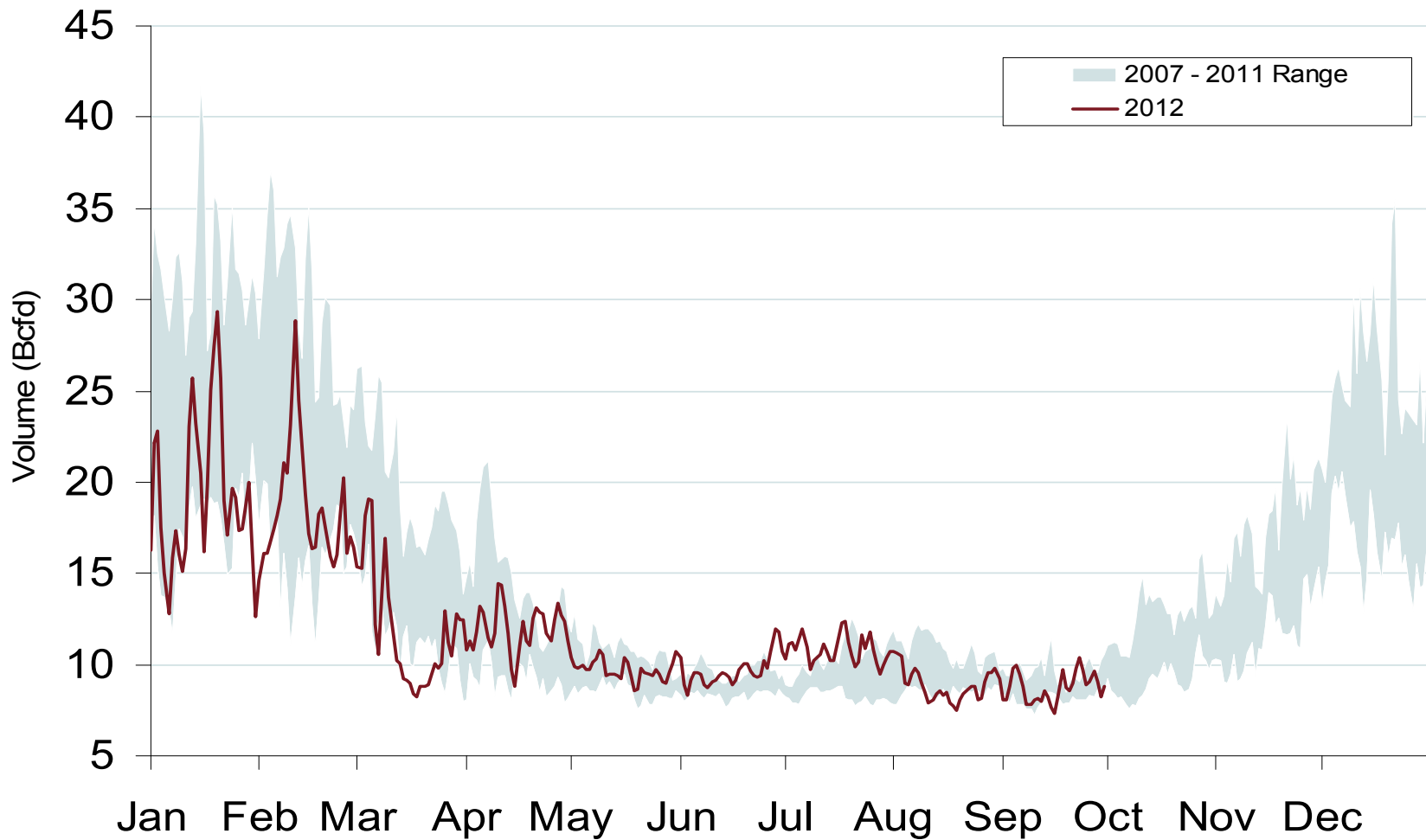
October 2012 Midwest Snapshot Report

Updated: October 03, 2012

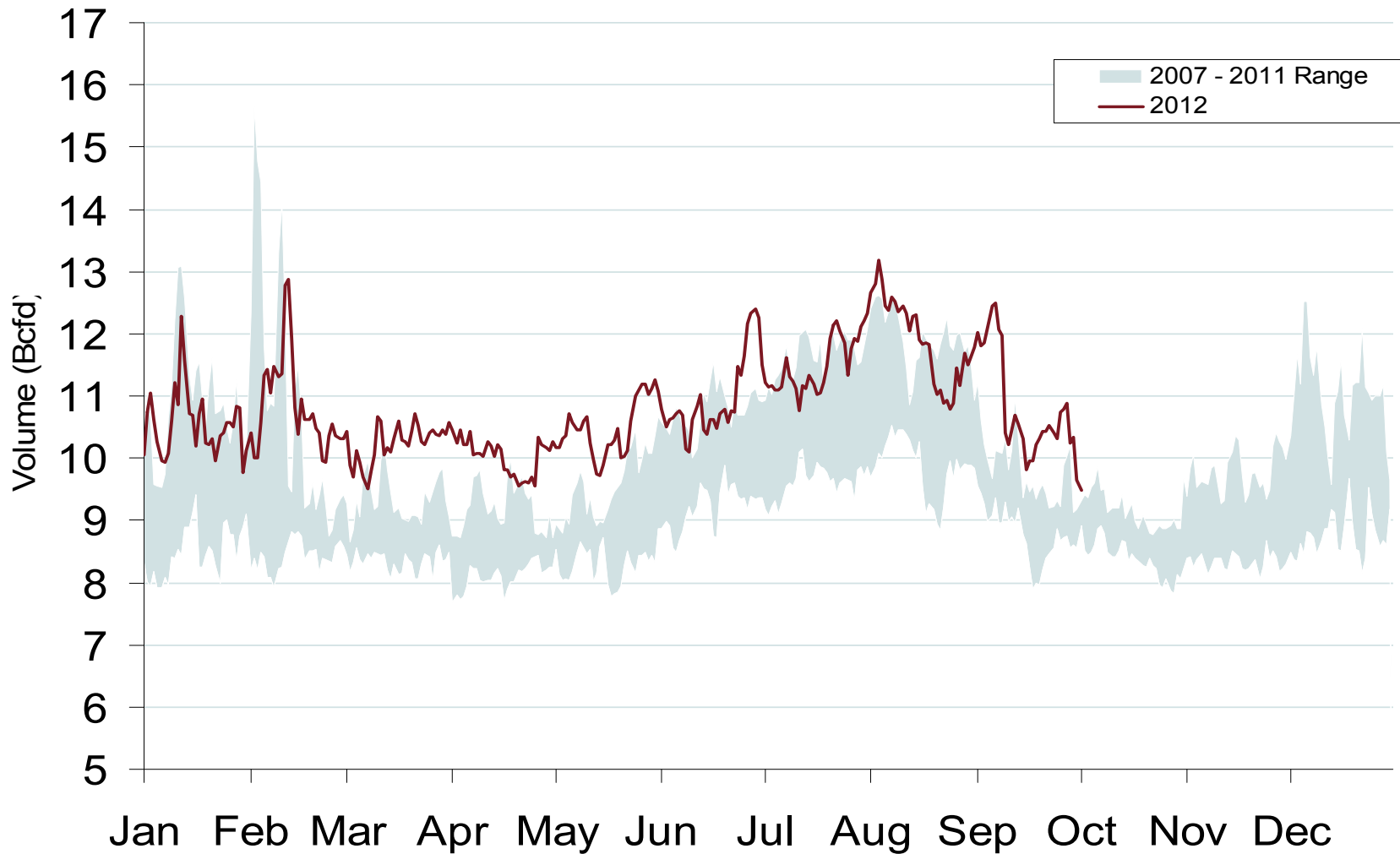
Total U.S. Natural Gas Demand All Sectors



Daily Midwest Natural Gas Demand All Sectors

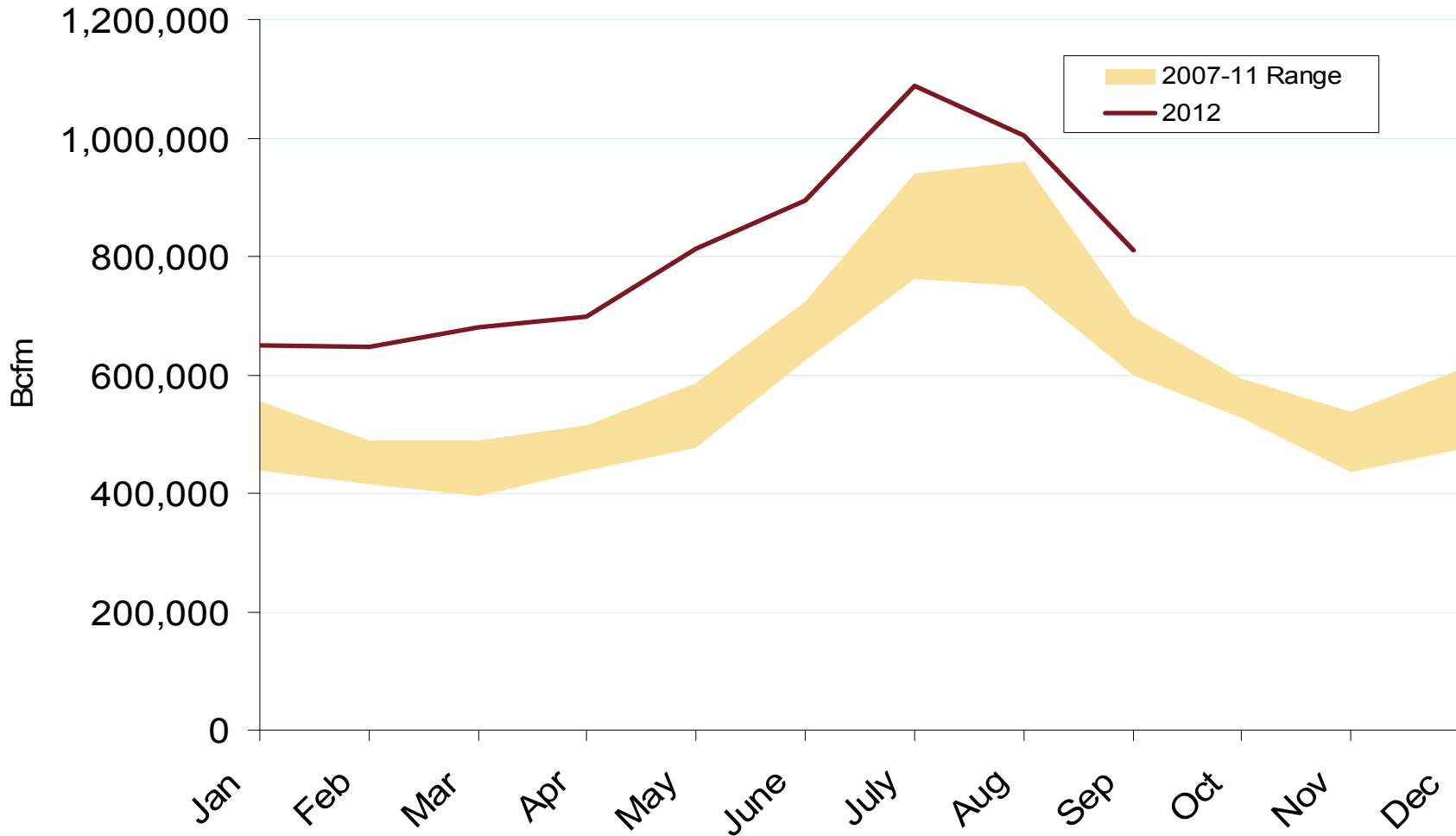


Daily Gulf Natural Gas Demand All Sectors



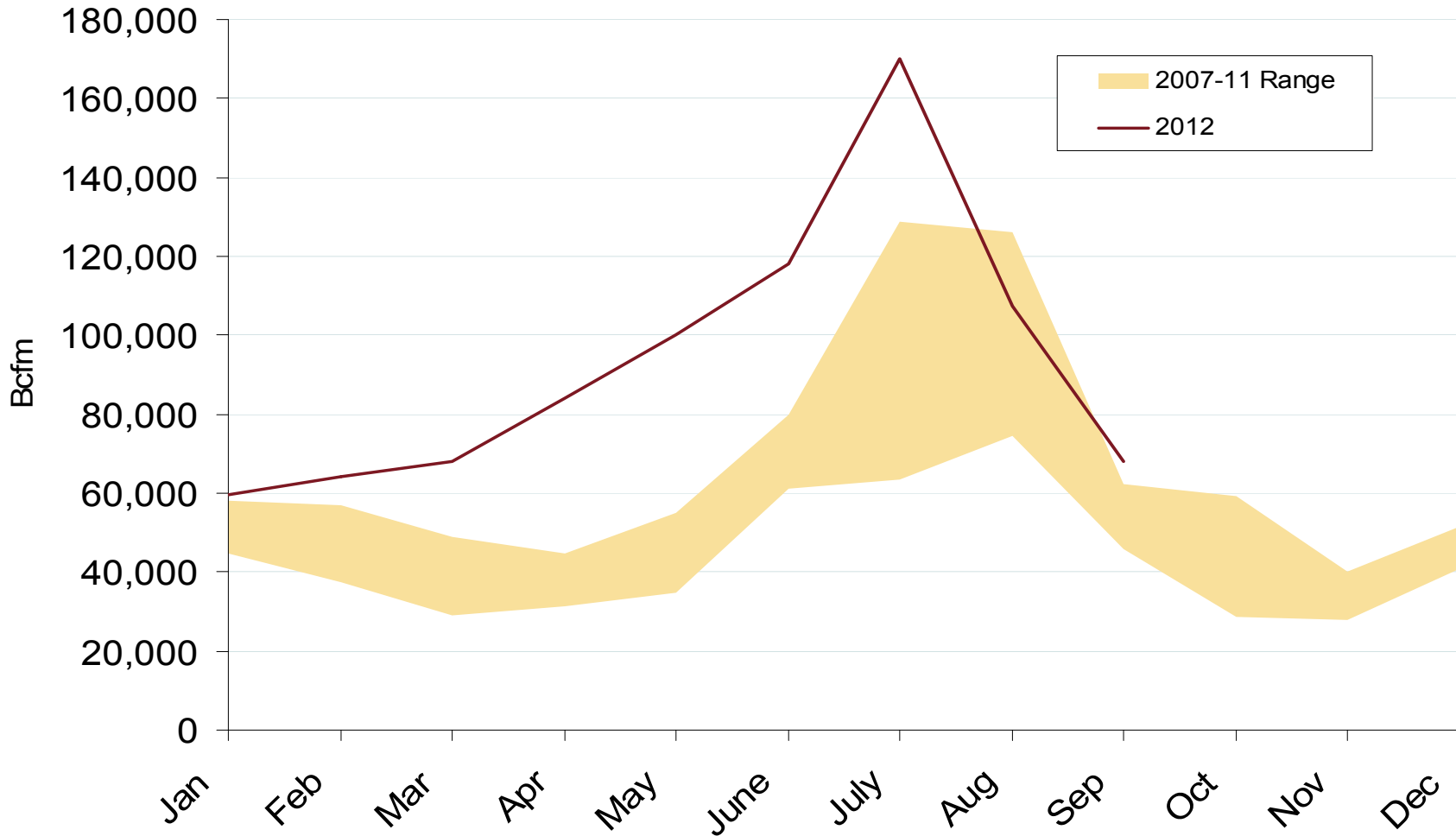
Federal Energy Regulatory Commission • Market Oversight • www.ferc.gov/oversight

U.S. Natural Gas Consumption for Power Generation

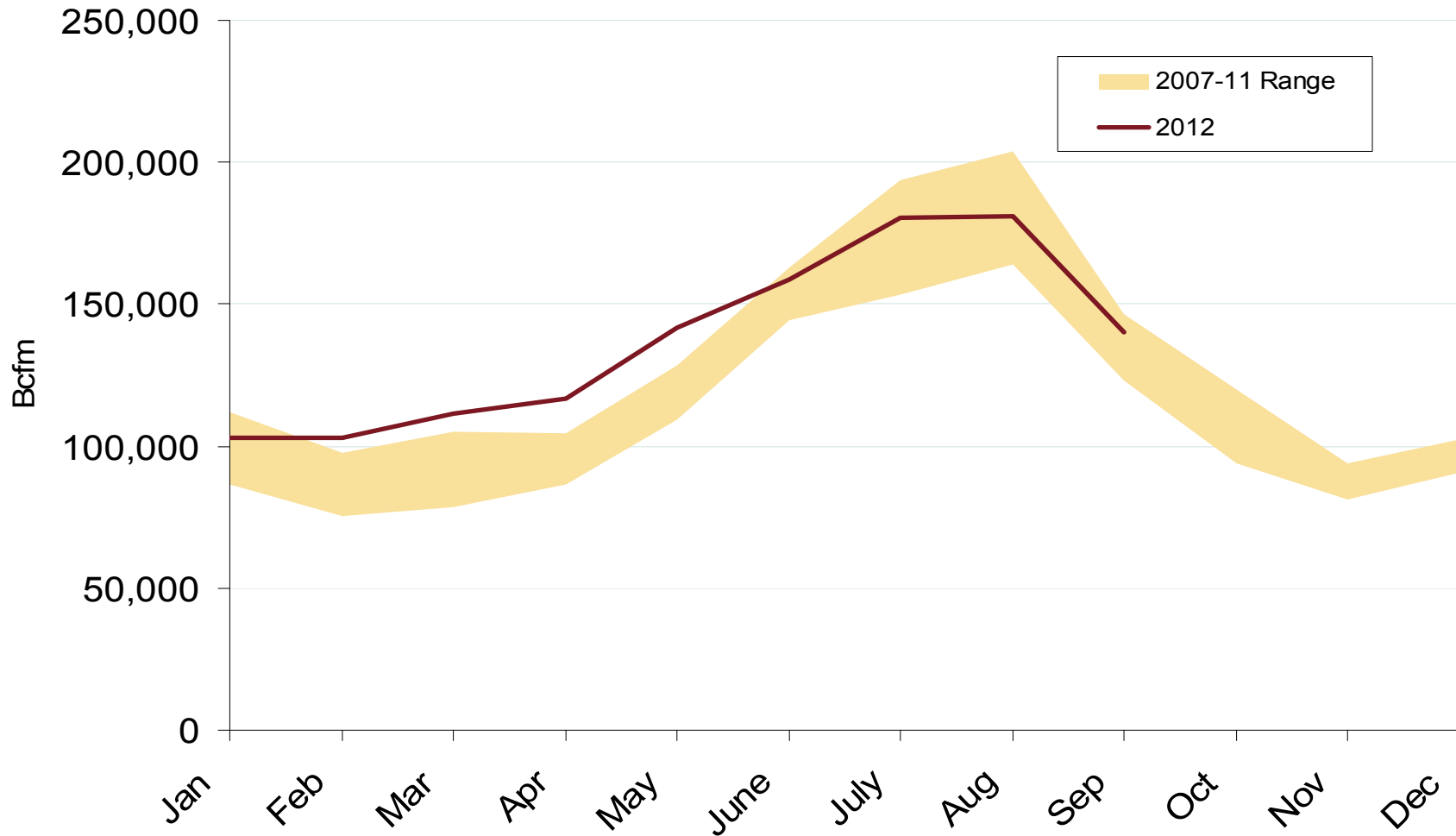


Federal Energy Regulatory Commission • Market Oversight • www.ferc.gov/oversight

Midwest Natural Gas Consumption for Power Generation

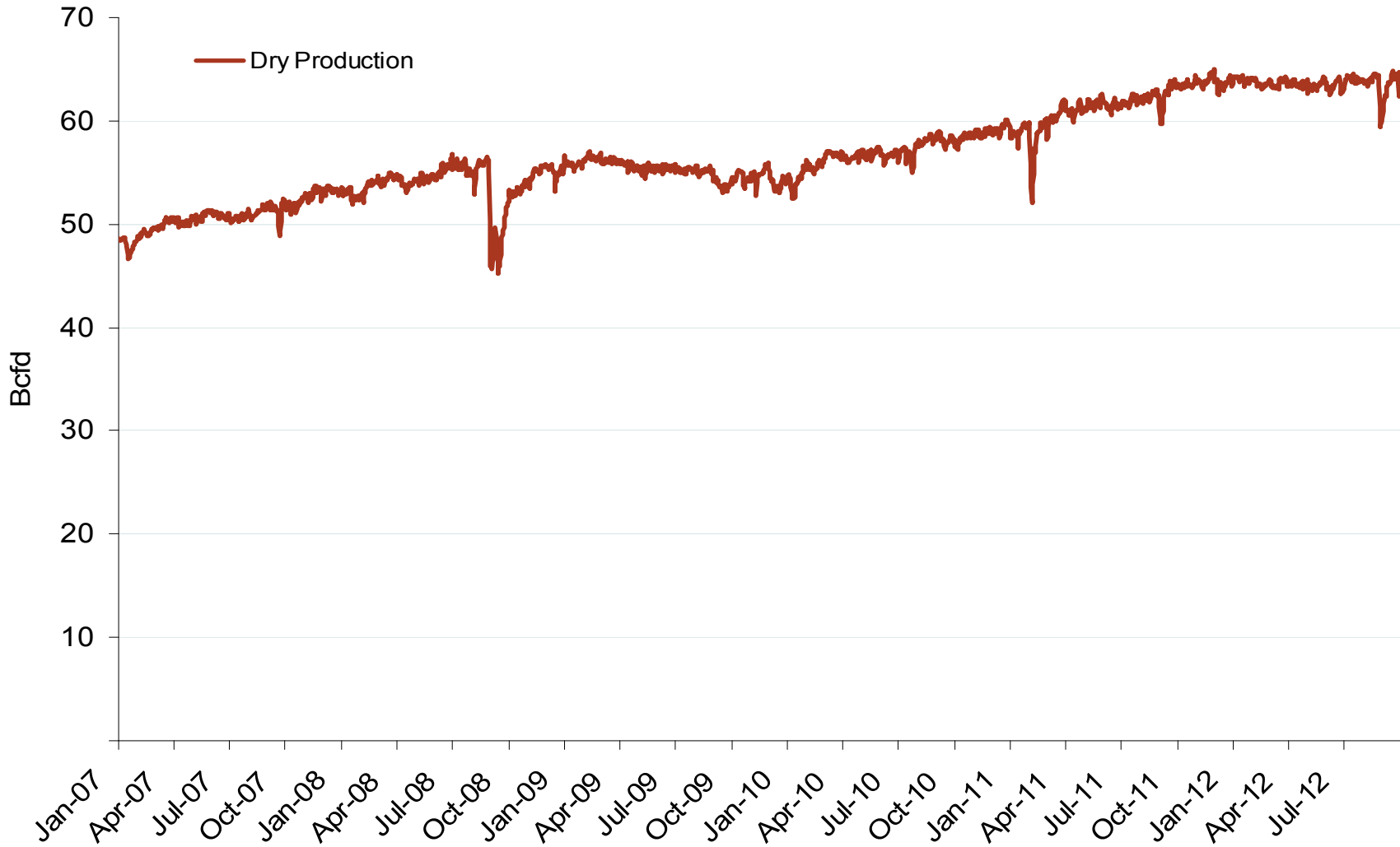


Gulf Natural Gas Consumption for Power Generation



Federal Energy Regulatory Commission • Market Oversight • www.ferc.gov/oversight

Monthly U.S. Dry Gas Production – Lower 48 States



Note: Prior to July 2010, chart was derived from a combination of EIA and Bentek Energy data

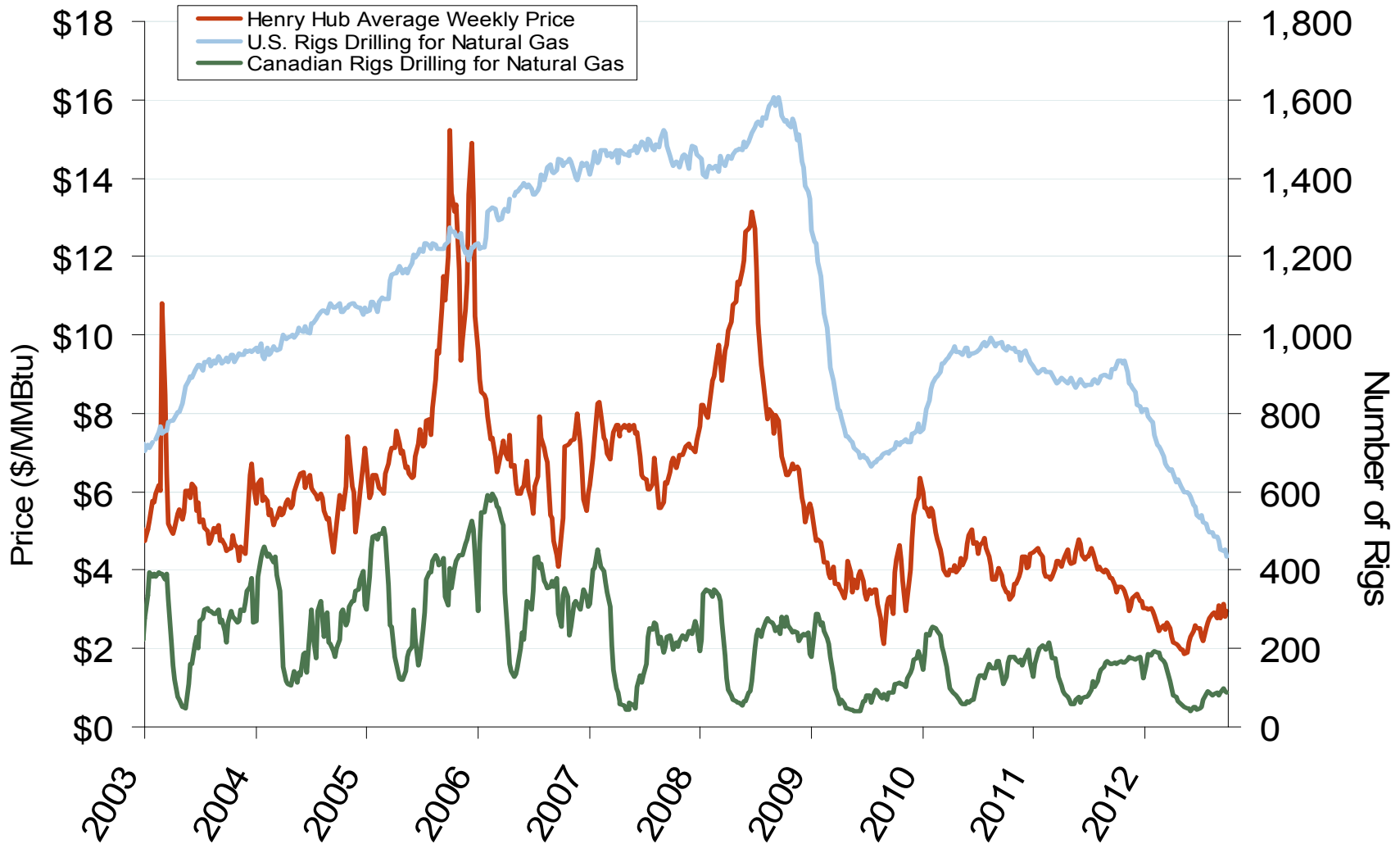
Source: Derived from Bentek Energy data

October 2012 Midwest Snapshot Report

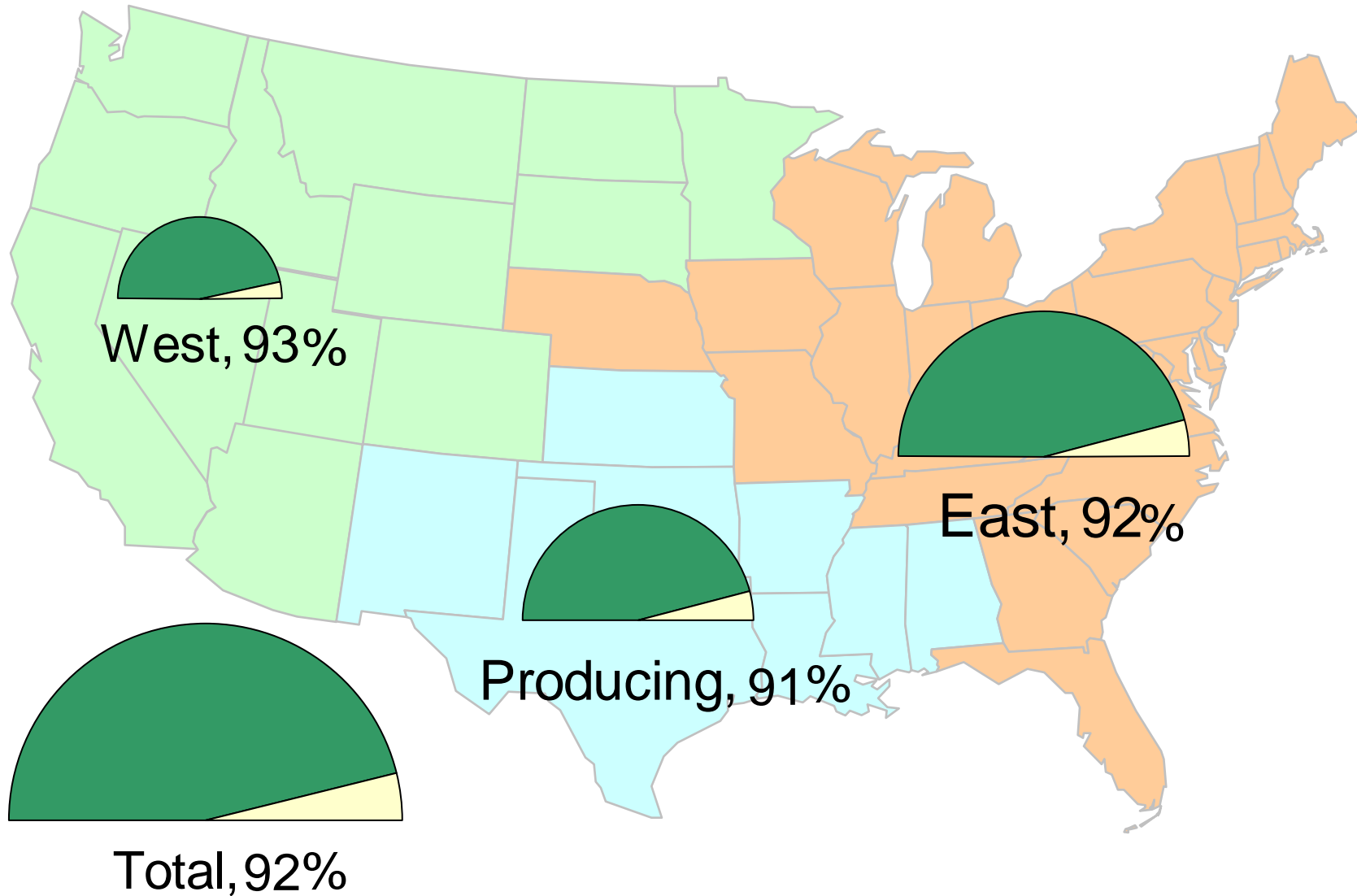
Updated: October 02, 2012

Federal Energy Regulatory Commission • Market Oversight • www.ferc.gov/oversight

U.S. and Canadian NG Drilling Rig Count and Daily Spot Prices

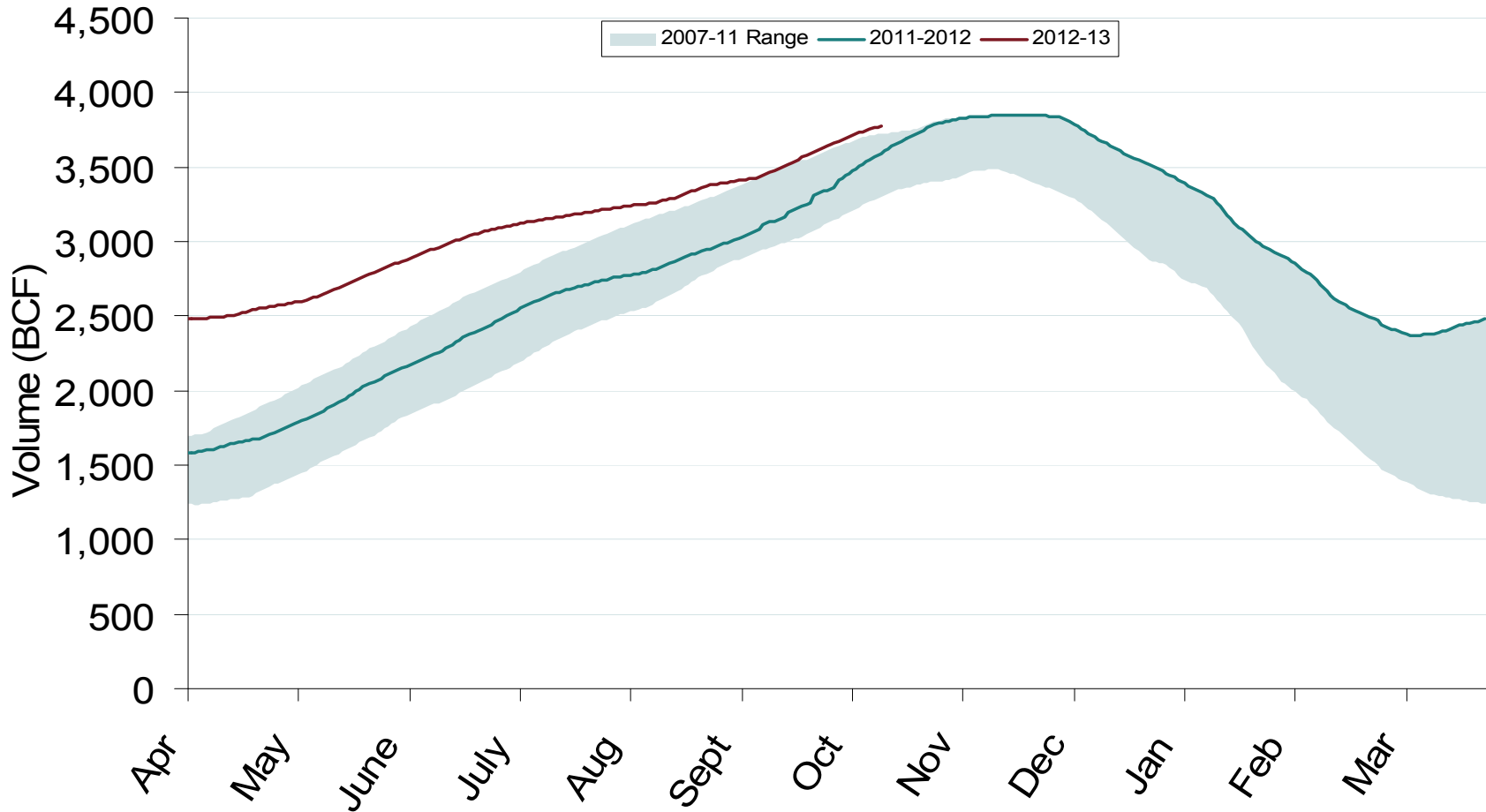


Natural Gas Storage Inventories – October 12, 2012

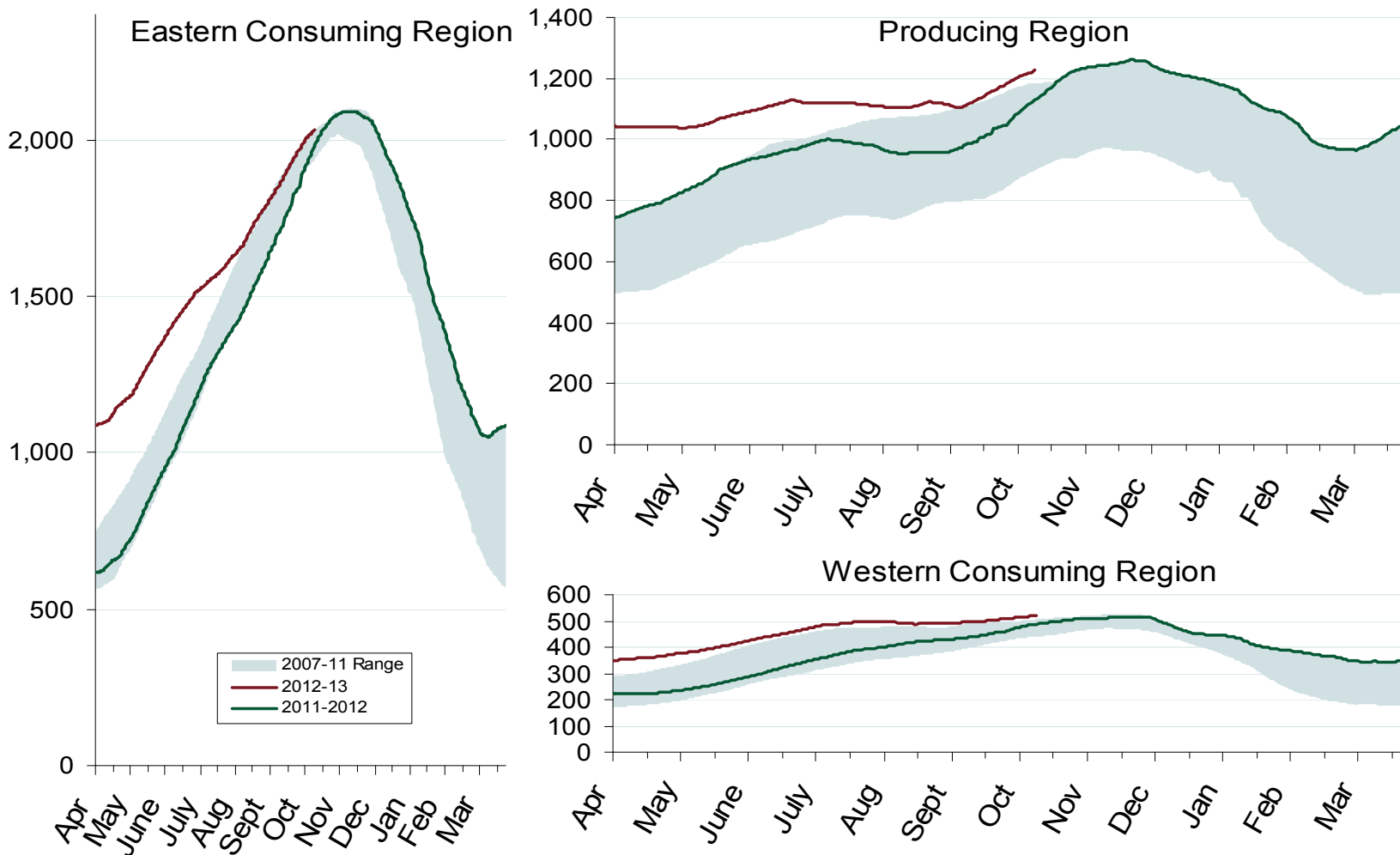


Source: Derived from EIA Storage and Estimated Working Gas Capacity data

Total U.S. Working Gas in Storage



Regional Totals of Working Gas in Storage

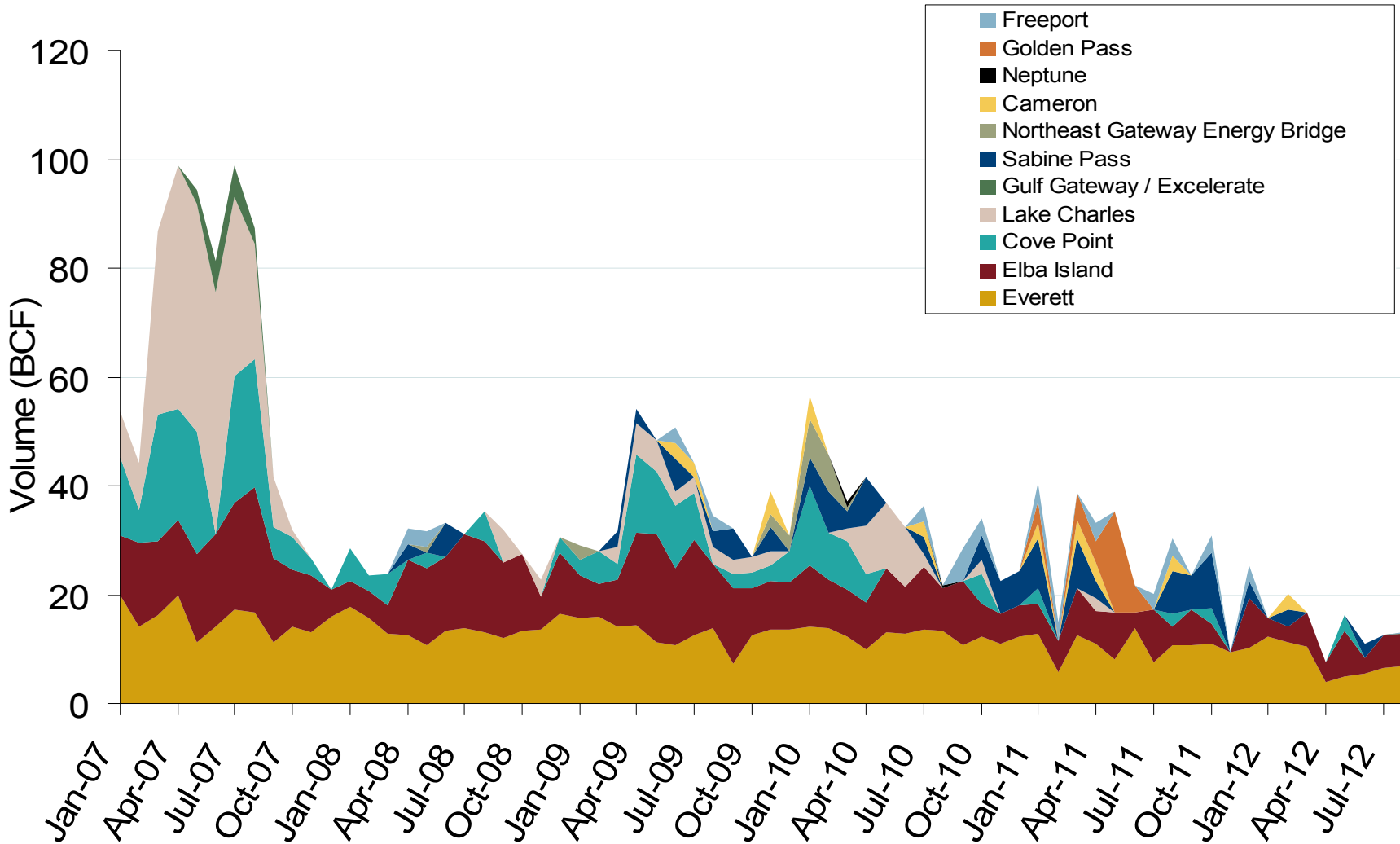


World LNG Estimated November 2012 Landed Prices



Federal Energy Regulatory Commission • Market Oversight • www.ferc.gov/oversight

Monthly Gas Imports at Existing U.S. LNG Facilities

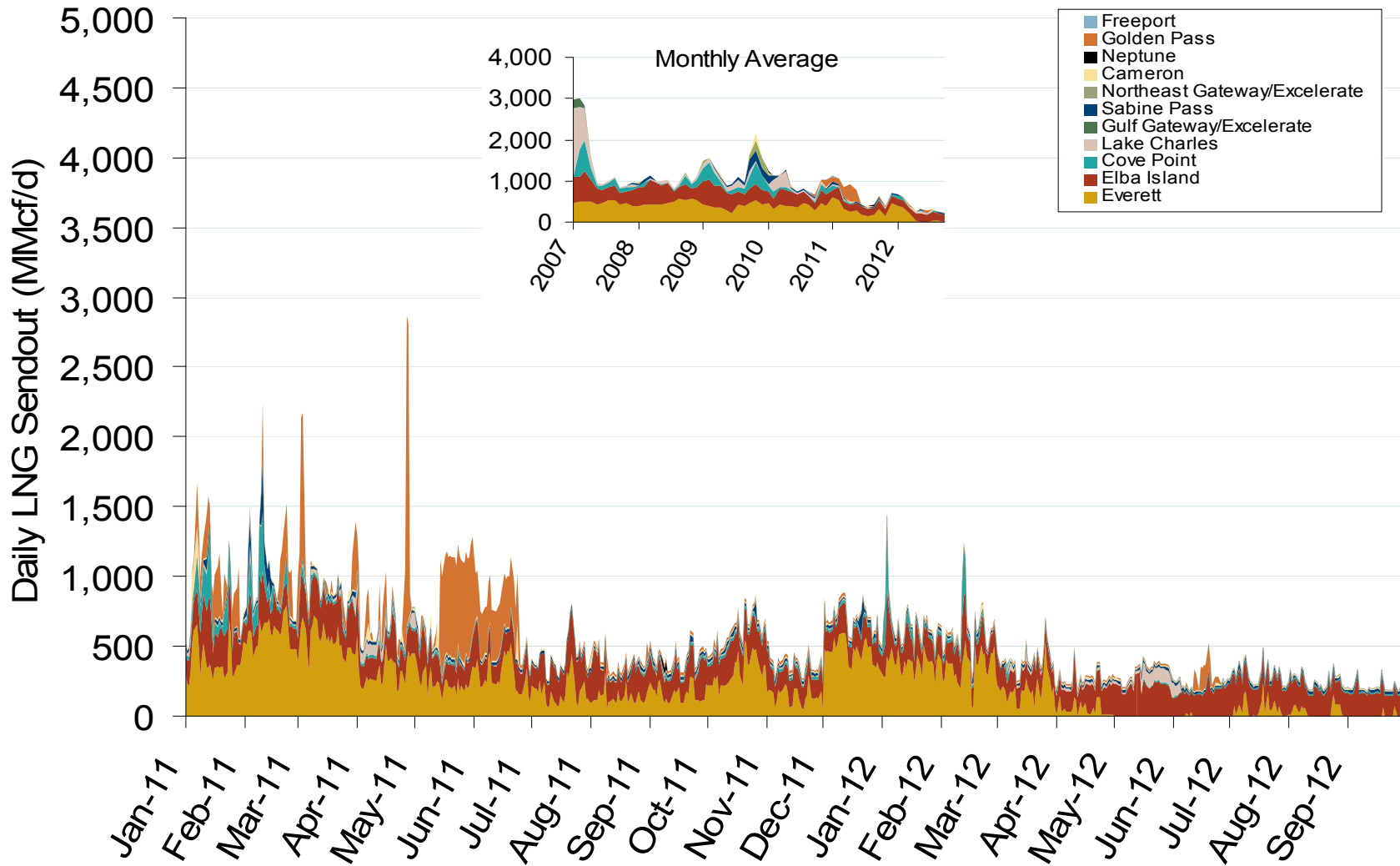


Source: Derived from DOE Office of Fossil Energy data
 October 2012 Midwest Snapshot Report

Updated: October 09, 2012

Federal Energy Regulatory Commission • Market Oversight • www.ferc.gov/oversight

Daily Gas Sendout from Existing U.S. LNG Facilities

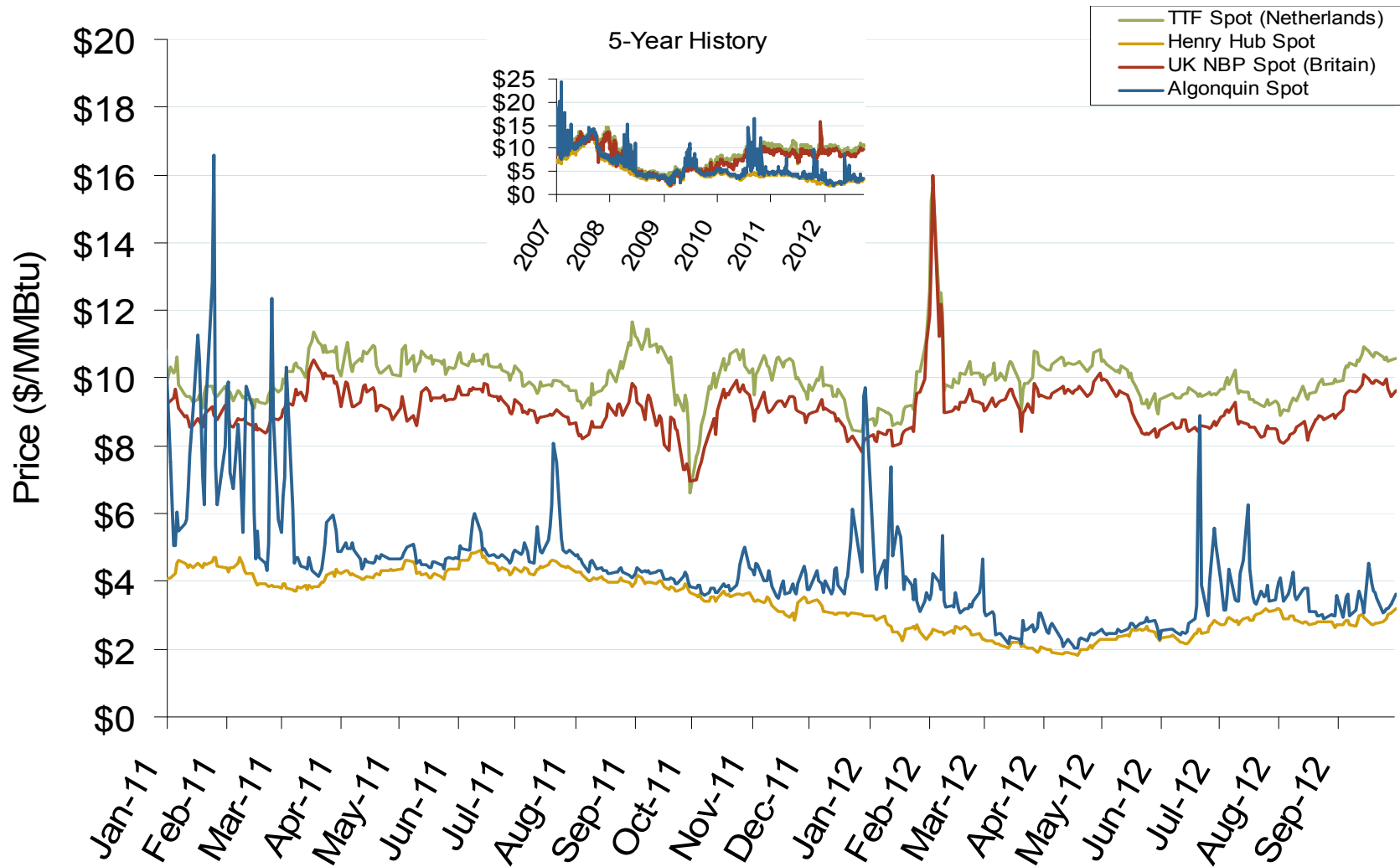


Notes: Everett data includes flows onto the AGT and TGP interstate lines, plus estimates of flows to the Mystic 7 power plant, Keyspan Boston Gas, and LNG trucked out of the terminal. Excludes flows to the Freeport LNG which flows via intrastate pipelines and flows to the Mystic 8 and 9 power plants.

Source: Derived from *Bentek Energy* data
 October 2012 Midwest Snapshot Report

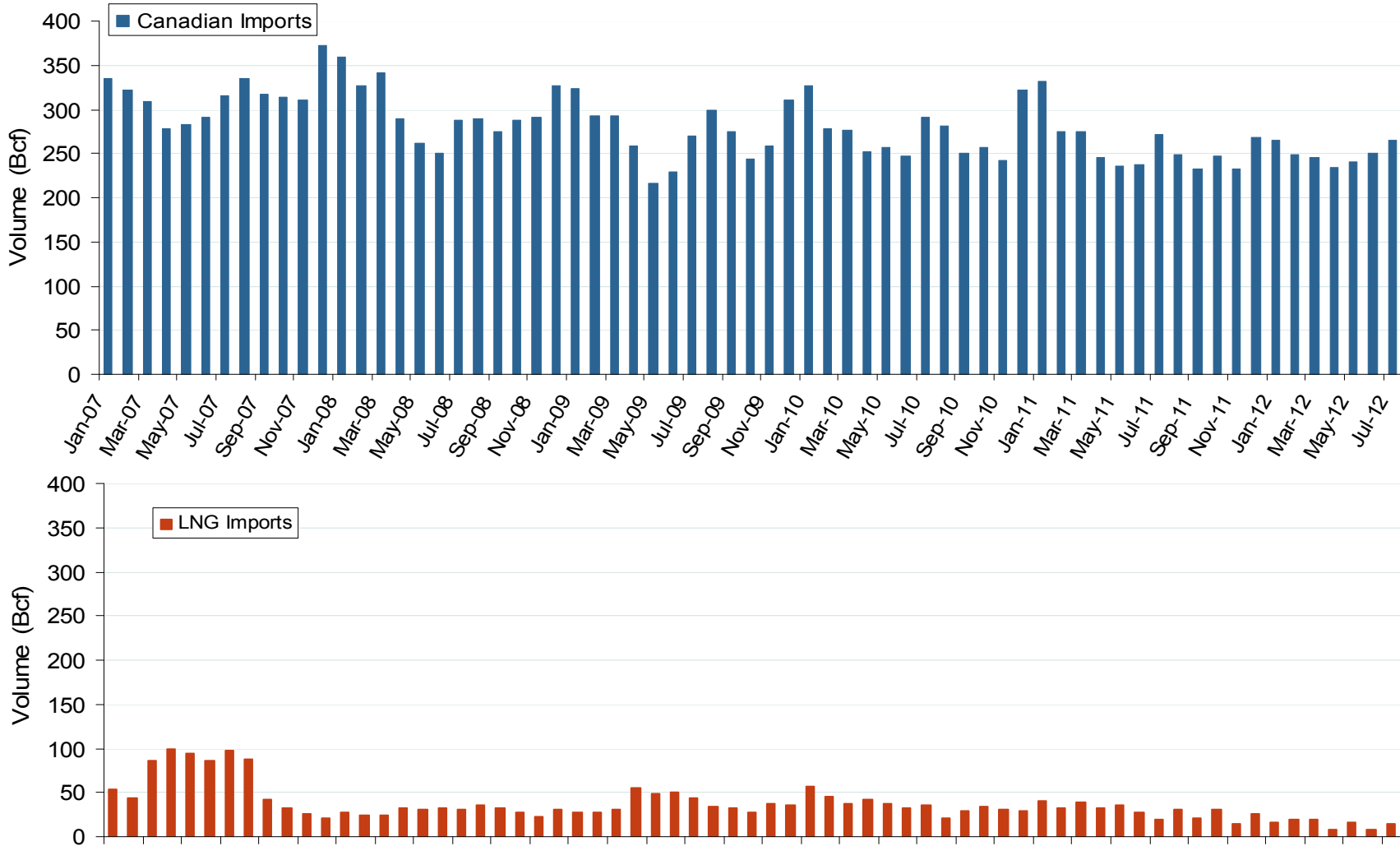
Updated: October 02, 2012

Atlantic Basin European and US Spot Natural Gas Prices

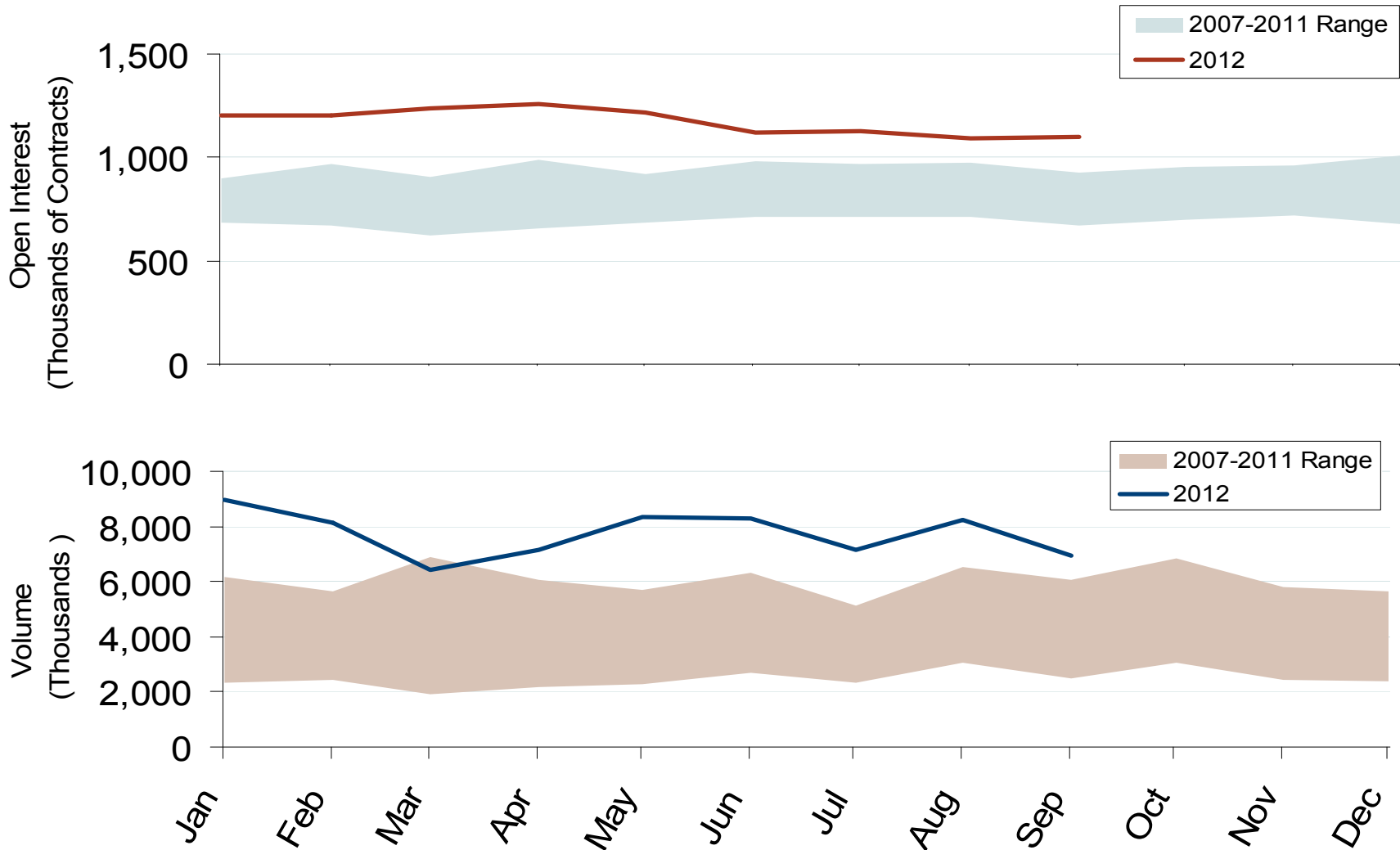


Federal Energy Regulatory Commission • Market Oversight • www.ferc.gov/oversight

Canadian and LNG Natural Gas Imports Into the U.S.

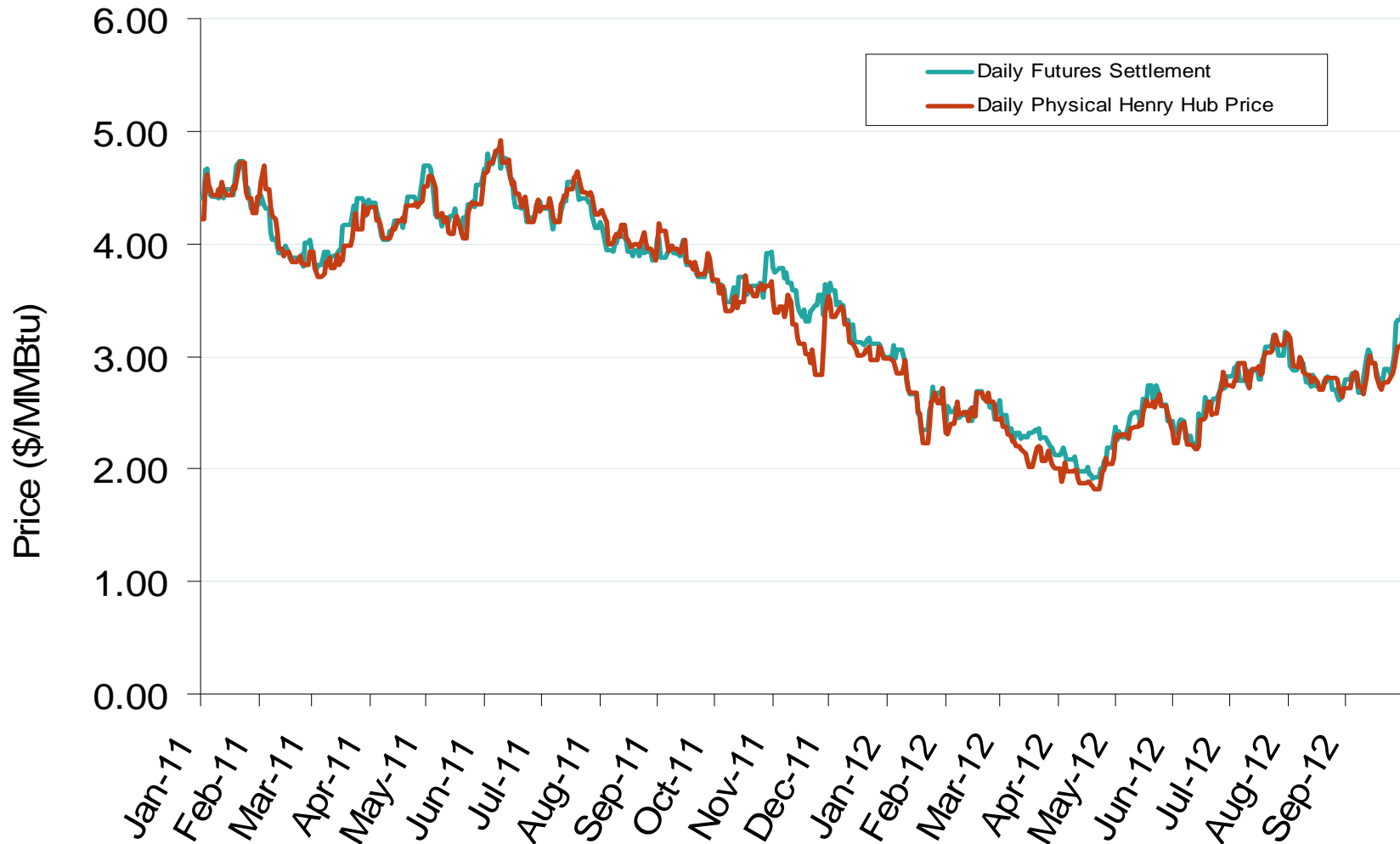


Nymex NG Futures Month-End Open Interest and Monthly Volume



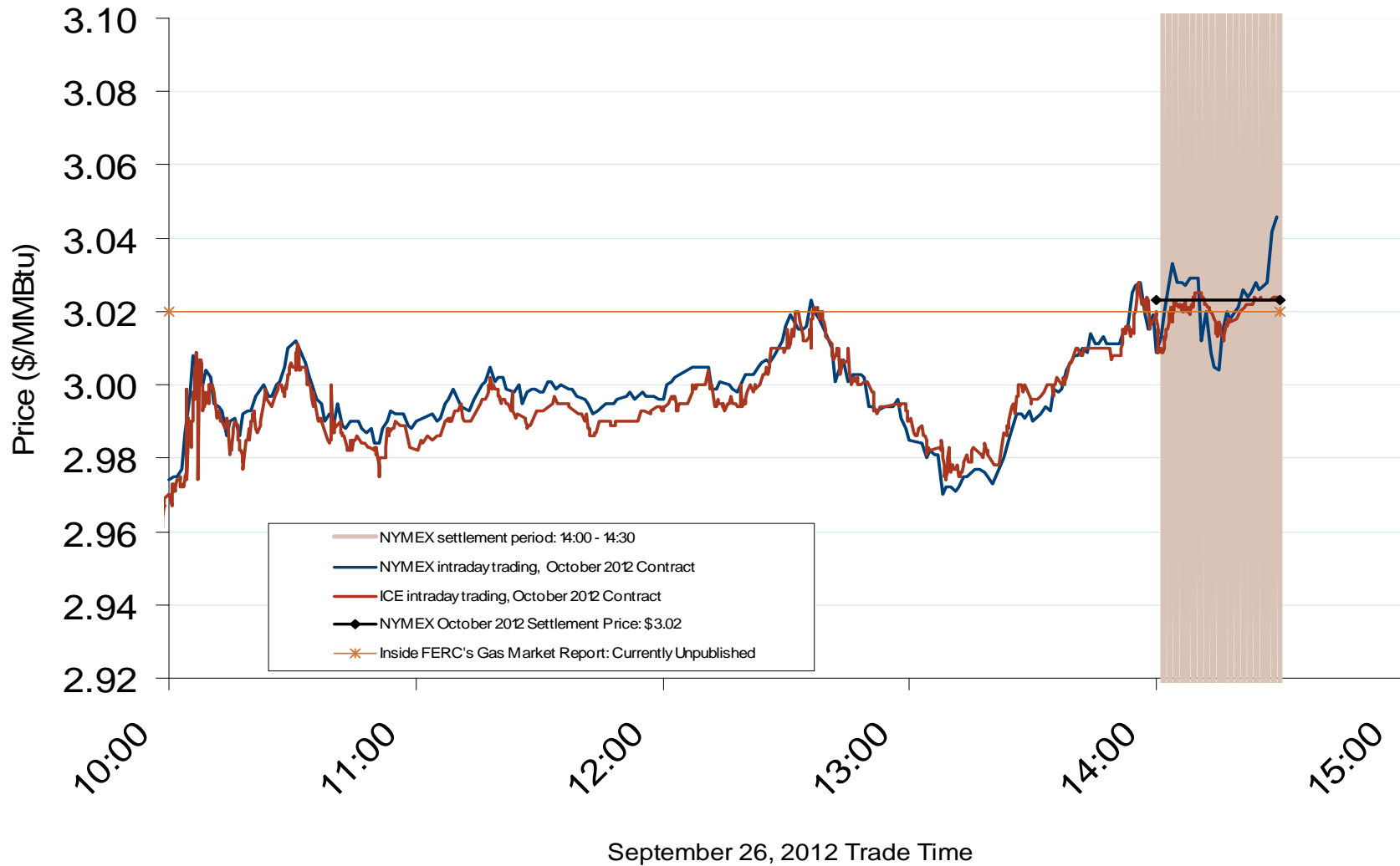
Federal Energy Regulatory Commission • Market Oversight • www.ferc.gov/oversight

Daily Physical Index Price & Daily Futures Settlement Price



Federal Energy Regulatory Commission • Market Oversight • www.ferc.gov/oversight

Nymex and ICE Contract Final Settlement - September 2012



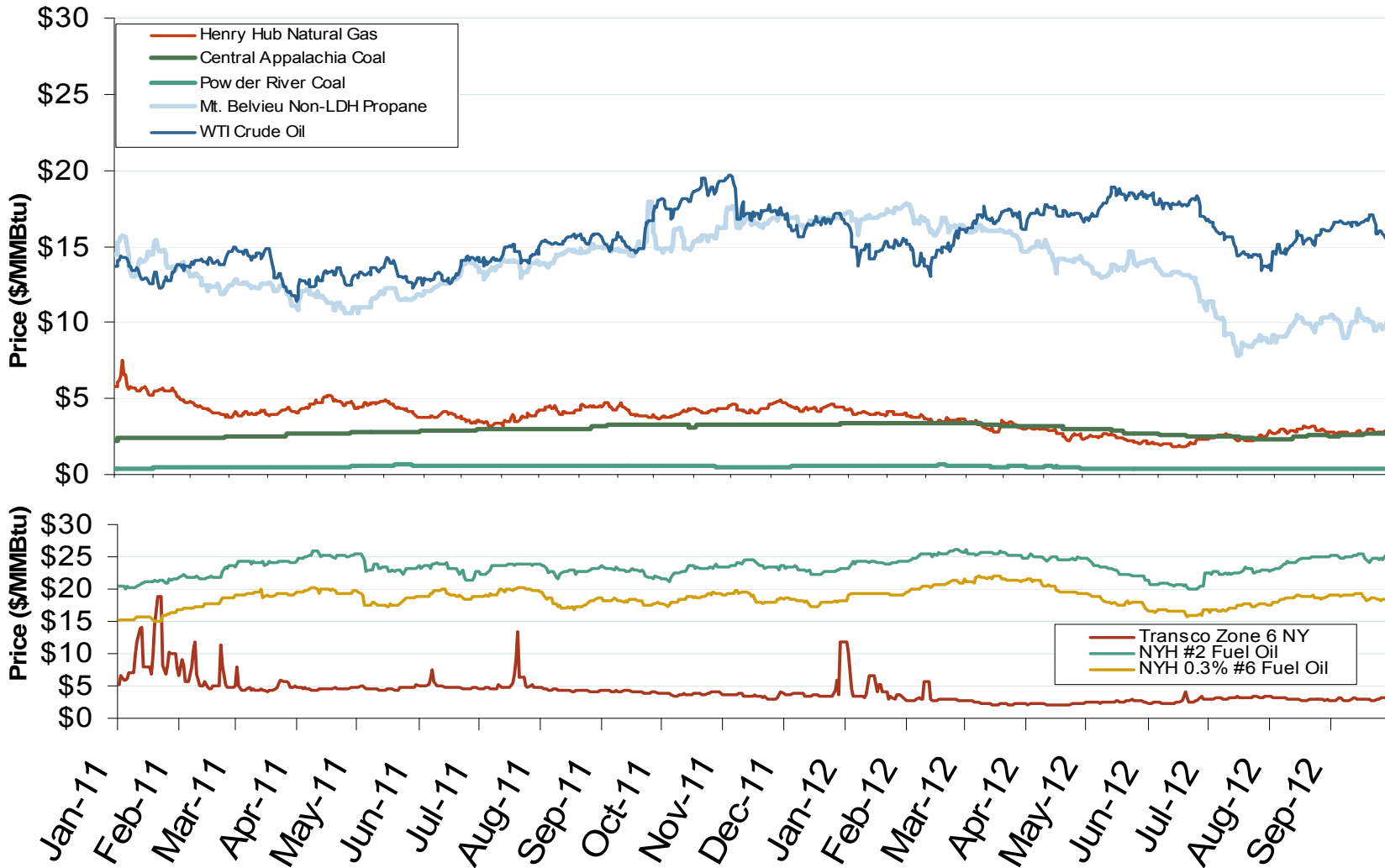
Notes: The final settlement day for this Nymex contract is three business days before the start of the contract term (which is the 1st day of the month)

Source: Derived from *Nymex* and *ICE* data
 October 2012 Midwest Snapshot Report

Updated: October 5, 2012

Federal Energy Regulatory Commission • Market Oversight • www.ferc.gov/oversight

Oil, Coal, Natural Gas and Propane Daily Spot Prices



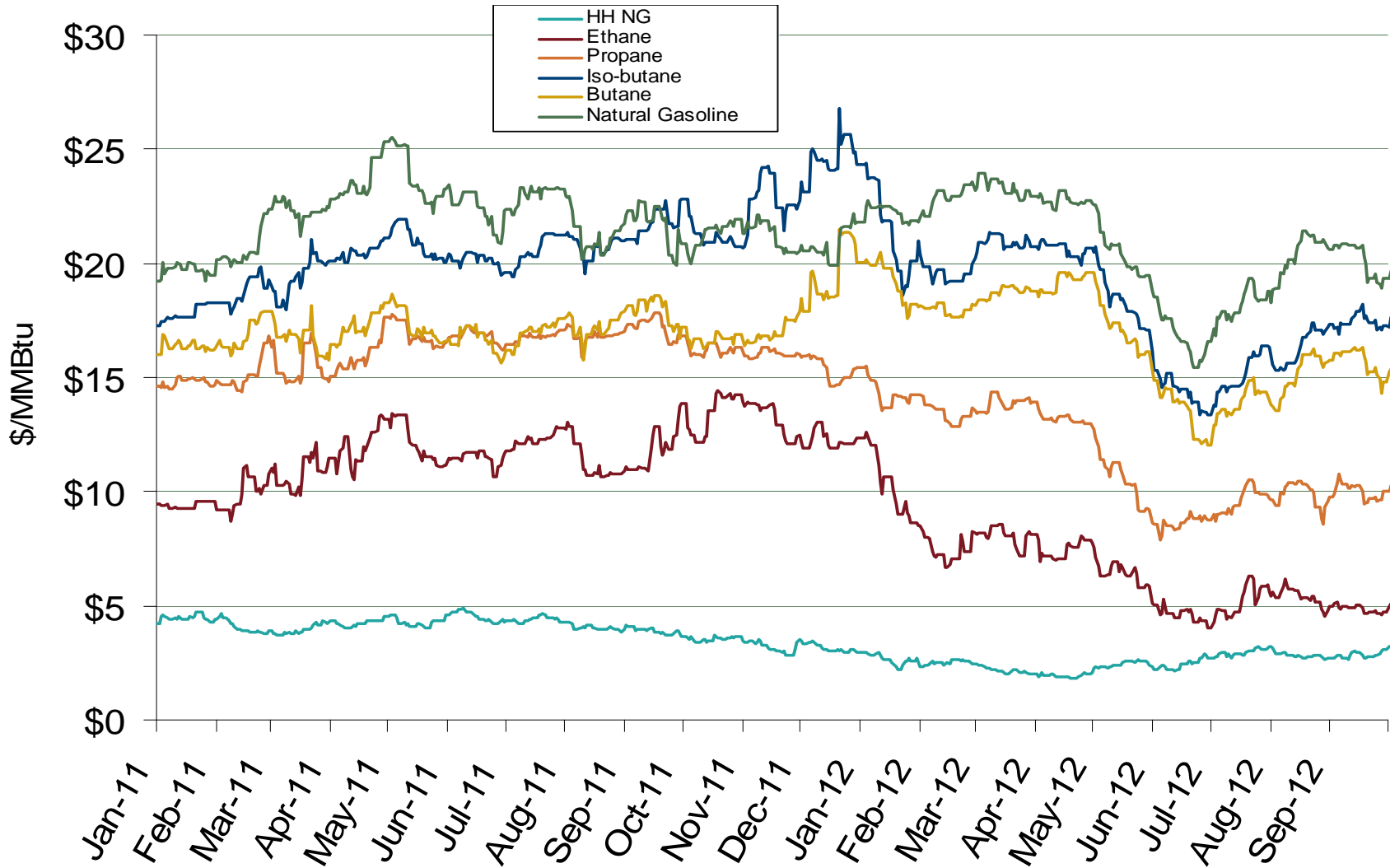
Notes: Coal prices are quoted in \$/ton. Conversion factors to \$/MMBtu are based on contract specifications of 12,000 btus/pound for Central Appalachian coal and 8800 btus/pound for Powder River Basin coal

Source: Derived from ICE and Bloomberg data

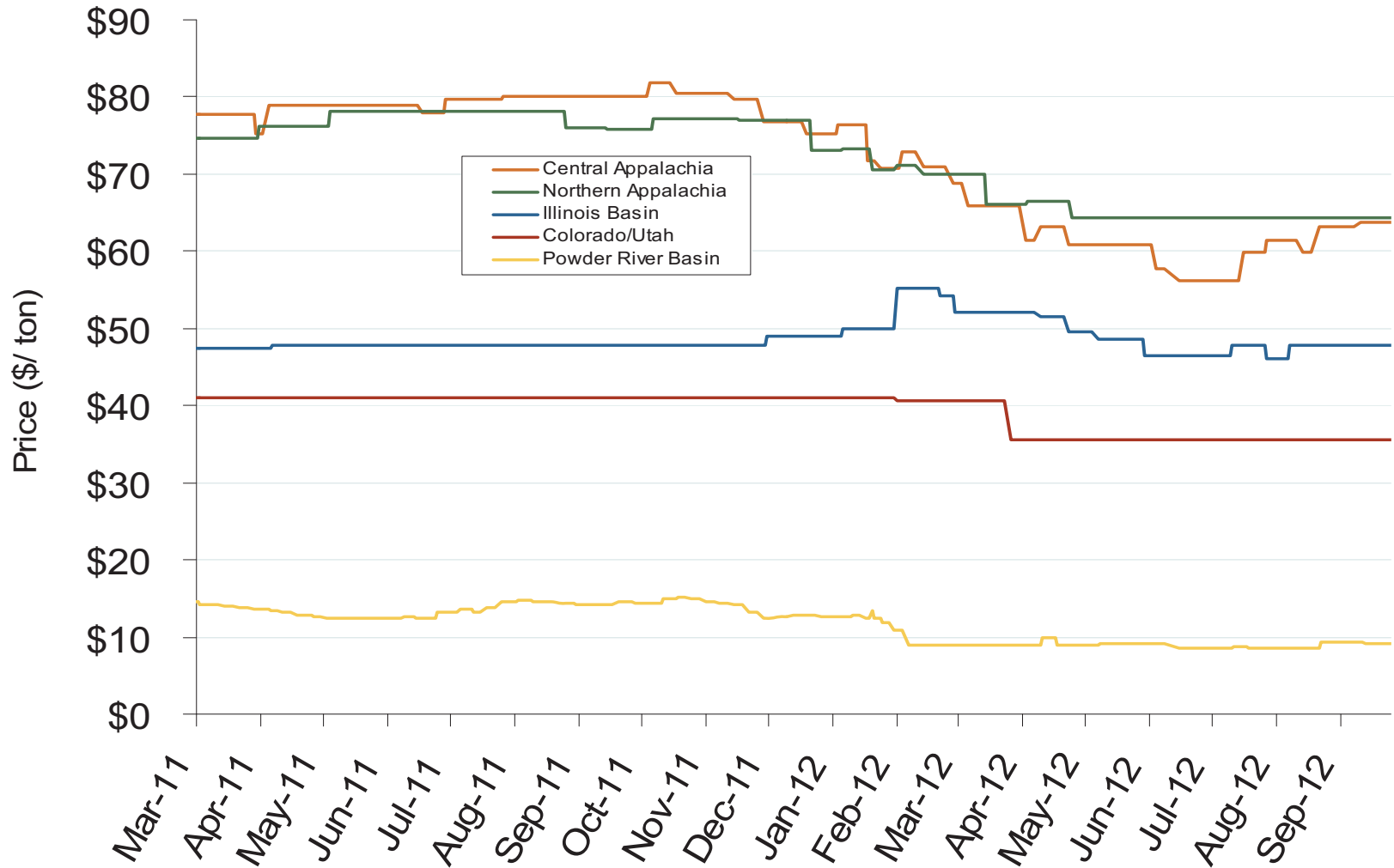
Updated: October 05, 2012

Federal Energy Regulatory Commission • Market Oversight • www.ferc.gov/oversight

U.S. Natural Gas vs. Natural Gas Liquids (NGL) Prices



Central Appalachian and Powder River Basin Coal Prices



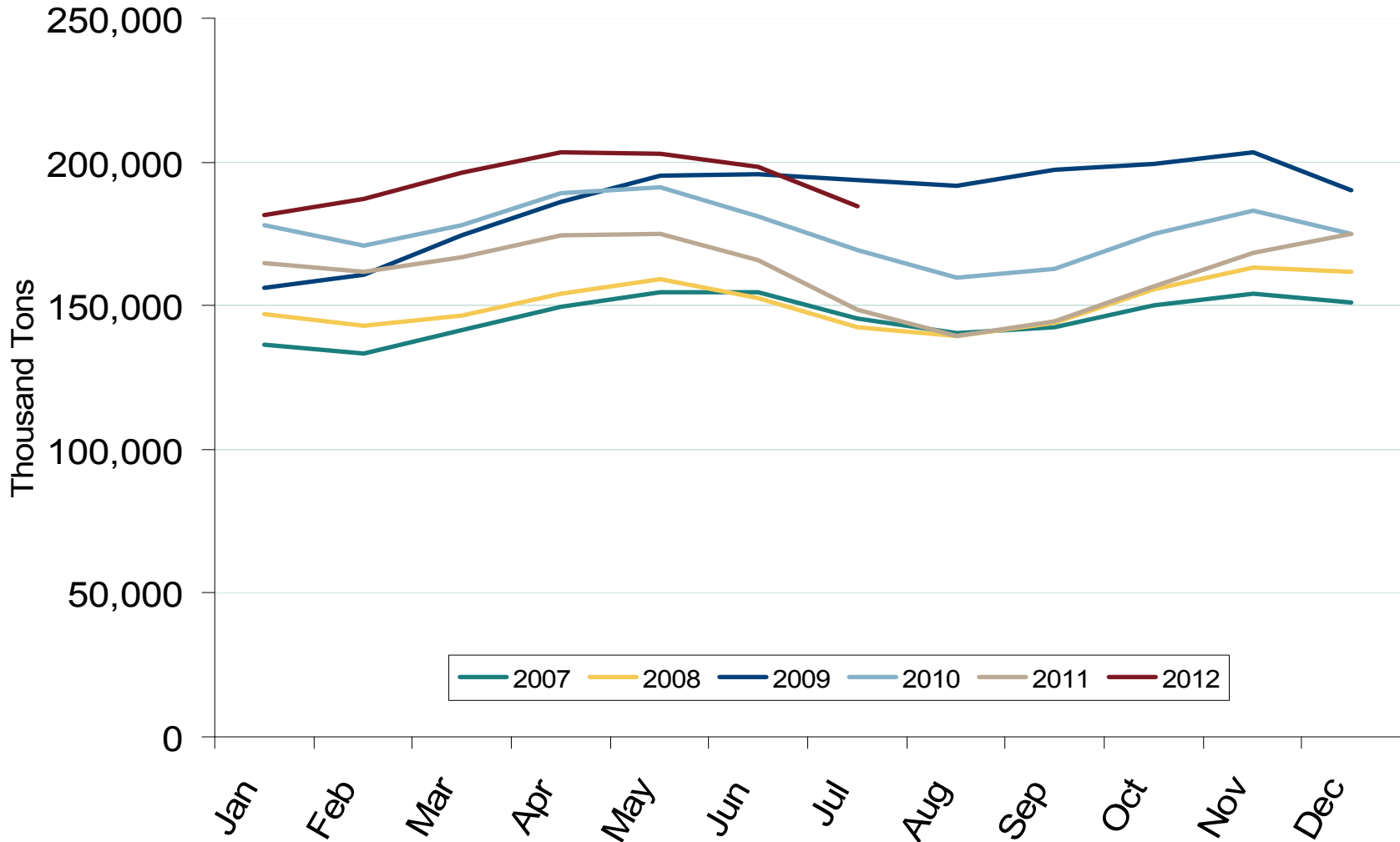
Notes: The Central Appalachian (CAPP) coal is priced at Big Sandy. All others are mine mouth prices. Prices do not include transportation costs to a plant, as those can vary widely by contract specifications. Prices exclude incremental cost of emissions allowances

Source: Derived from Bloomberg data

Updated: October 05, 2012

Federal Energy Regulatory Commission • Market Oversight • www.ferc.gov/oversight

U.S. Coal Stockpiles at Electric Power Generating Facilities



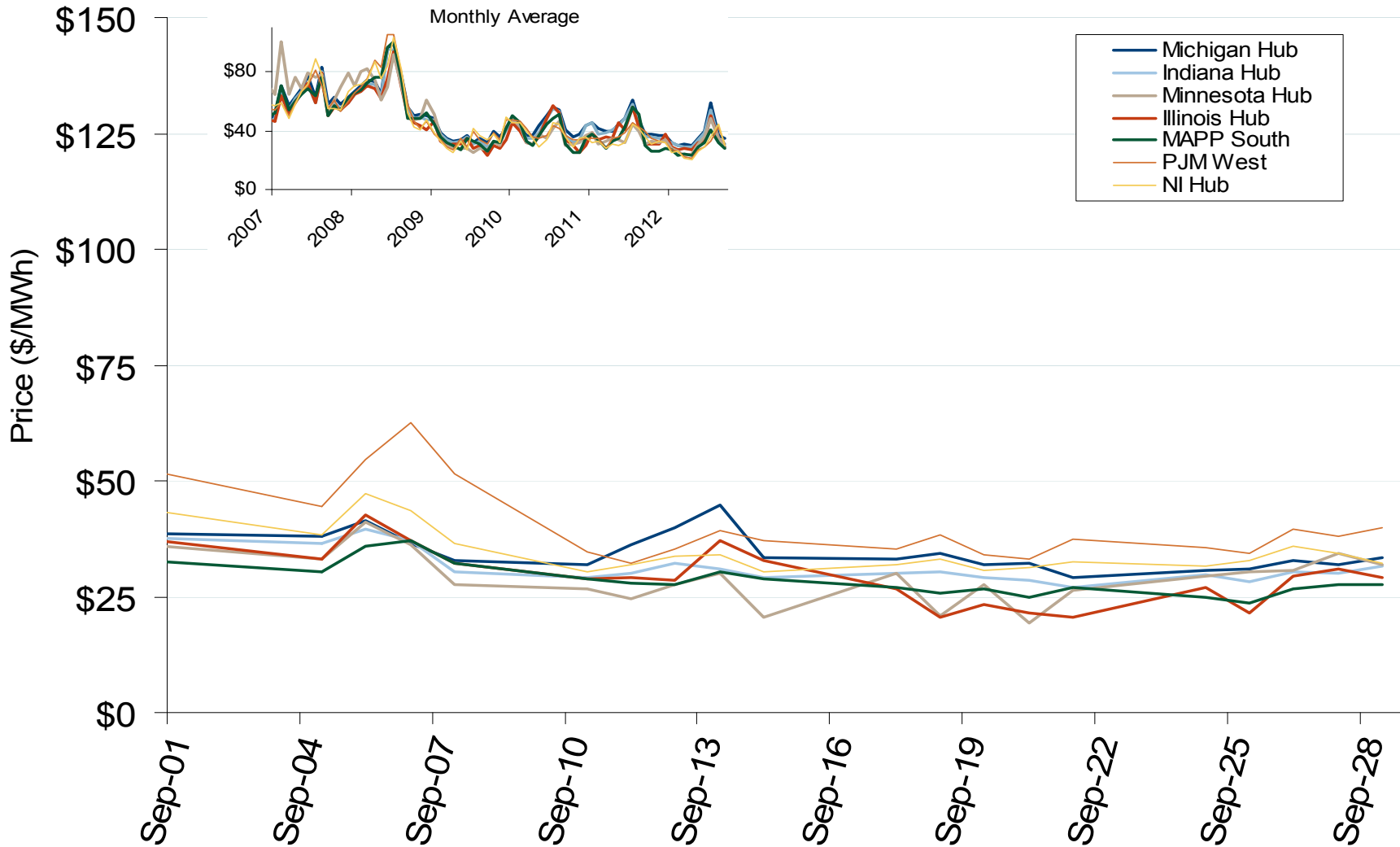
Source: Derived from EIA data. Excludes Industrial and Commercial Plants
October 2012 Midwest Snapshot Report



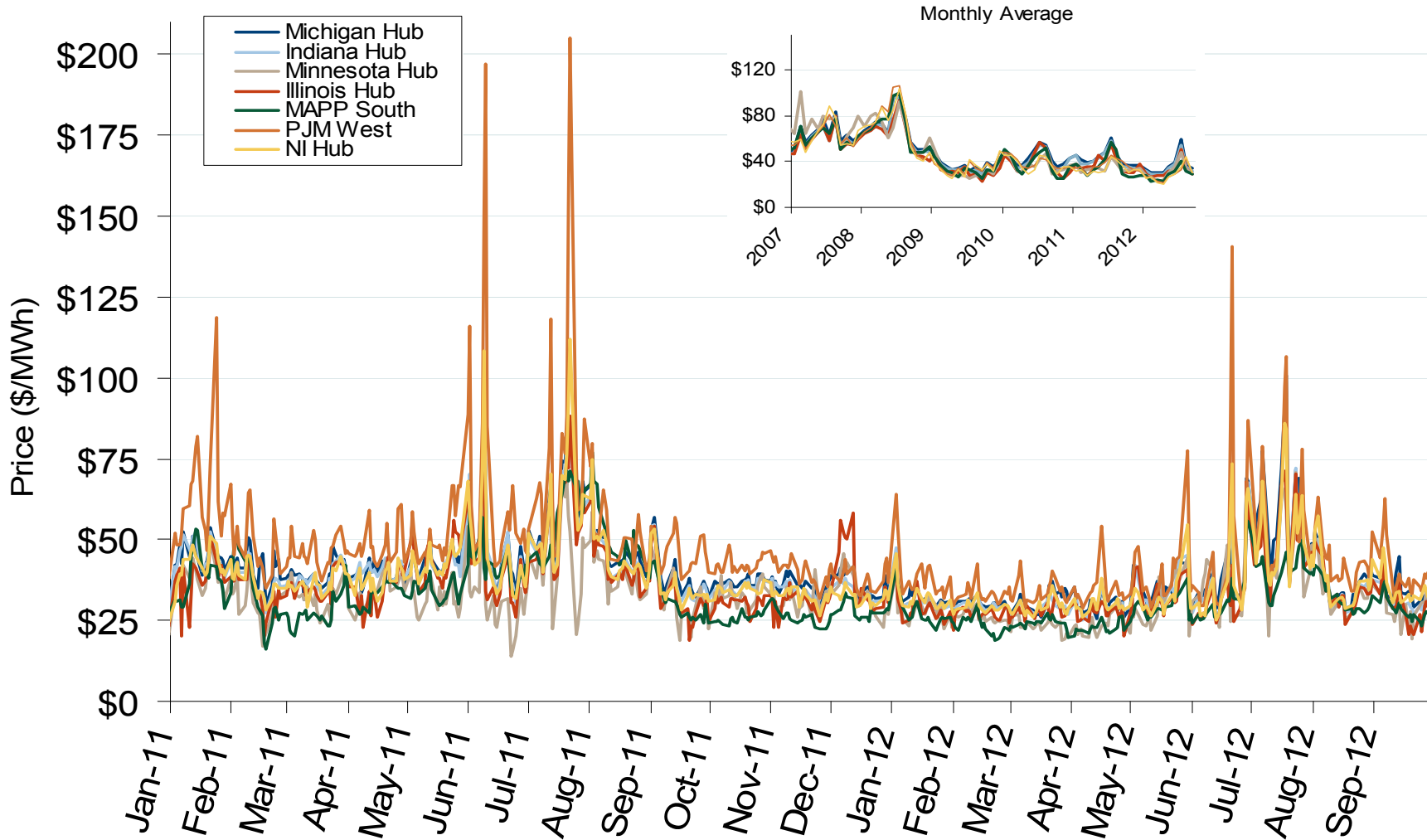
Electricity Markets

Federal Energy Regulatory Commission • Market Oversight • www.ferc.gov/oversight

MISO/PJM Index Day-Ahead On-Peak Prices

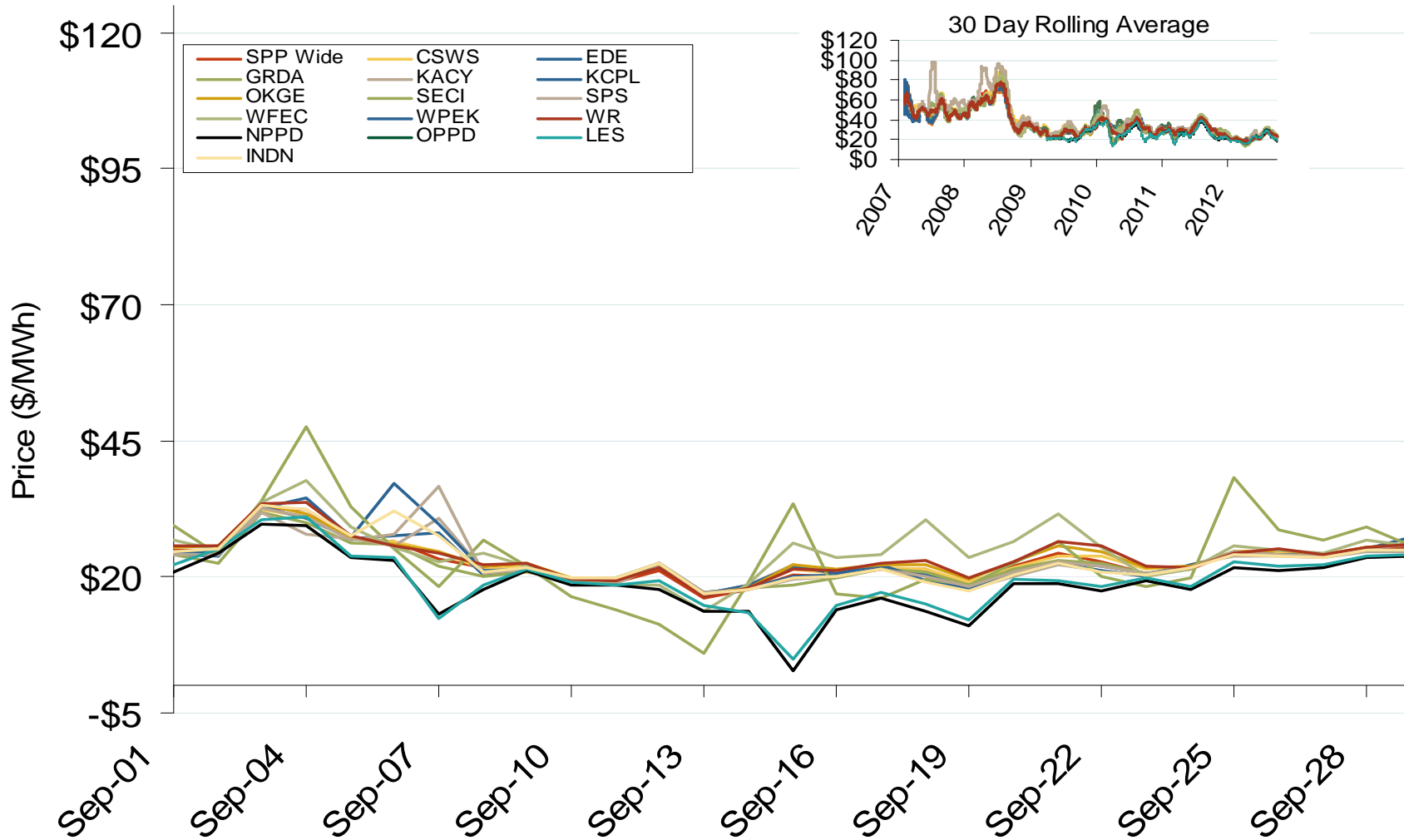


MISO/PJM Index Day-Ahead On-Peak Prices



Federal Energy Regulatory Commission • Market Oversight • www.ferc.gov/oversight

Daily Average of SPP Real Time Prices - All Hours

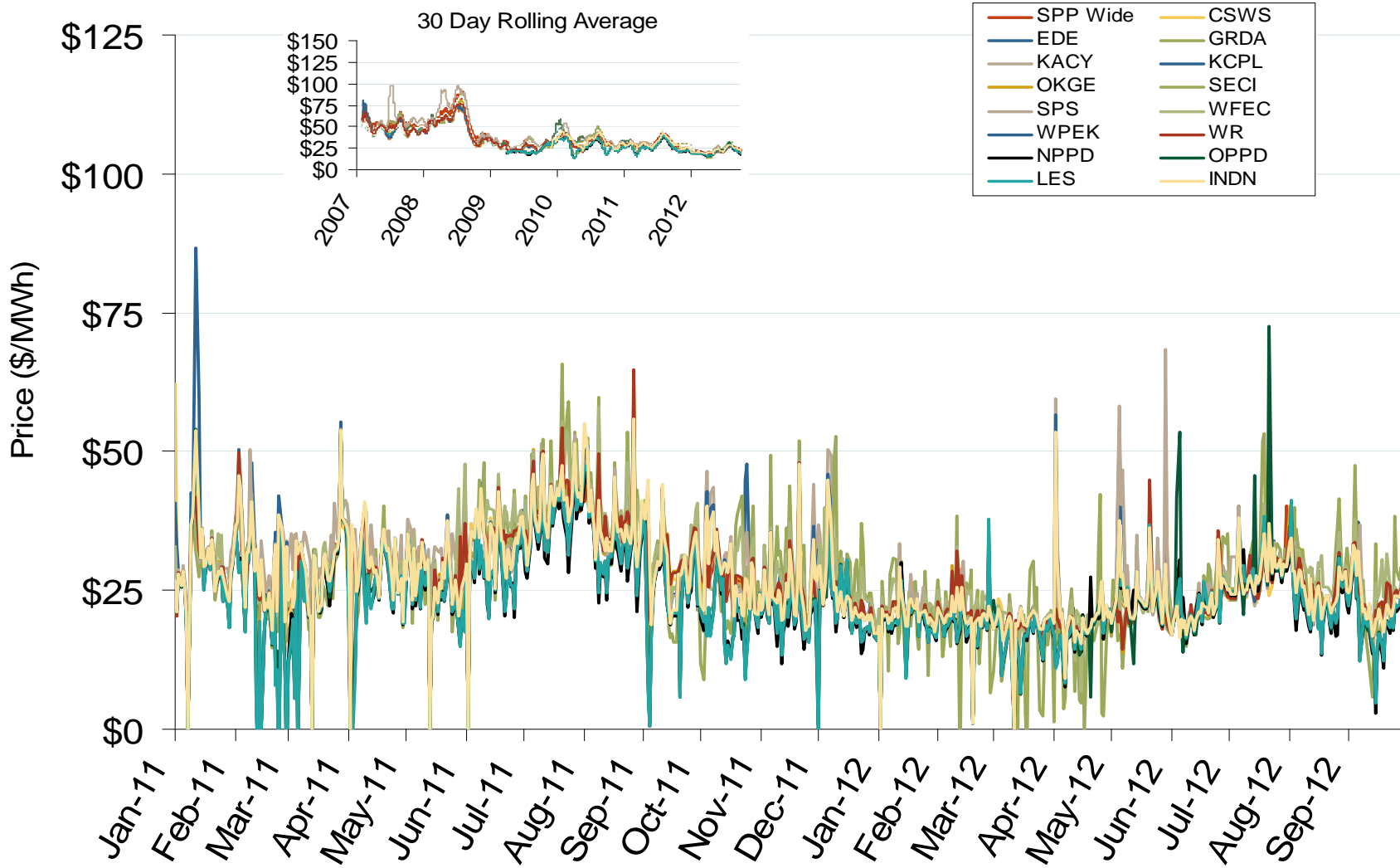


Note: ICE on-peak forward (physical) volumes are for Entergy, Southern and TVA and include monthly, dual monthly, quarterly, and calendar year contracts traded for each month.

Source: Derived from SPP data

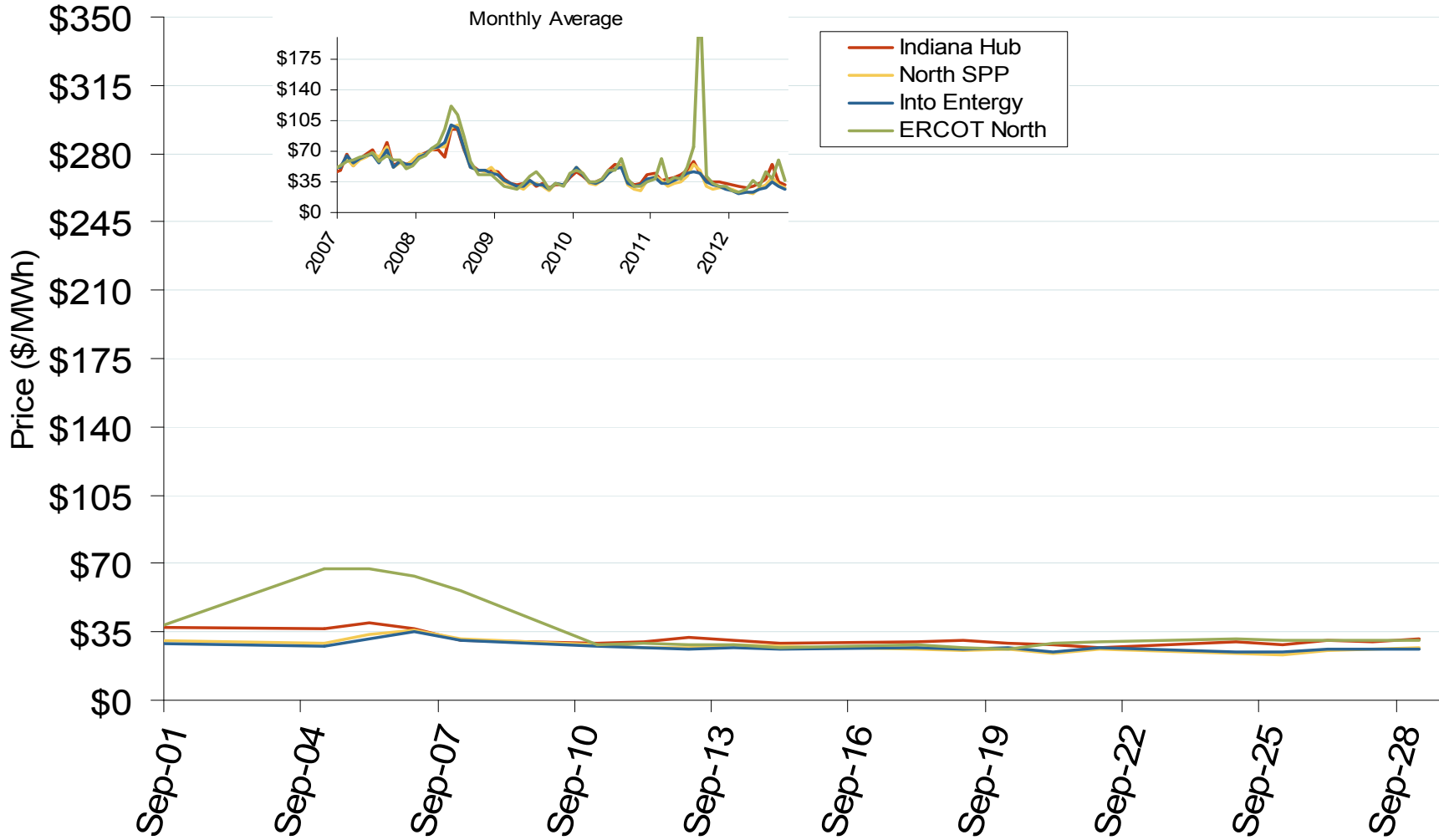
Federal Energy Regulatory Commission • Market Oversight • www.ferc.gov/oversight

Daily Average of SPP Real Time Prices - All Hours



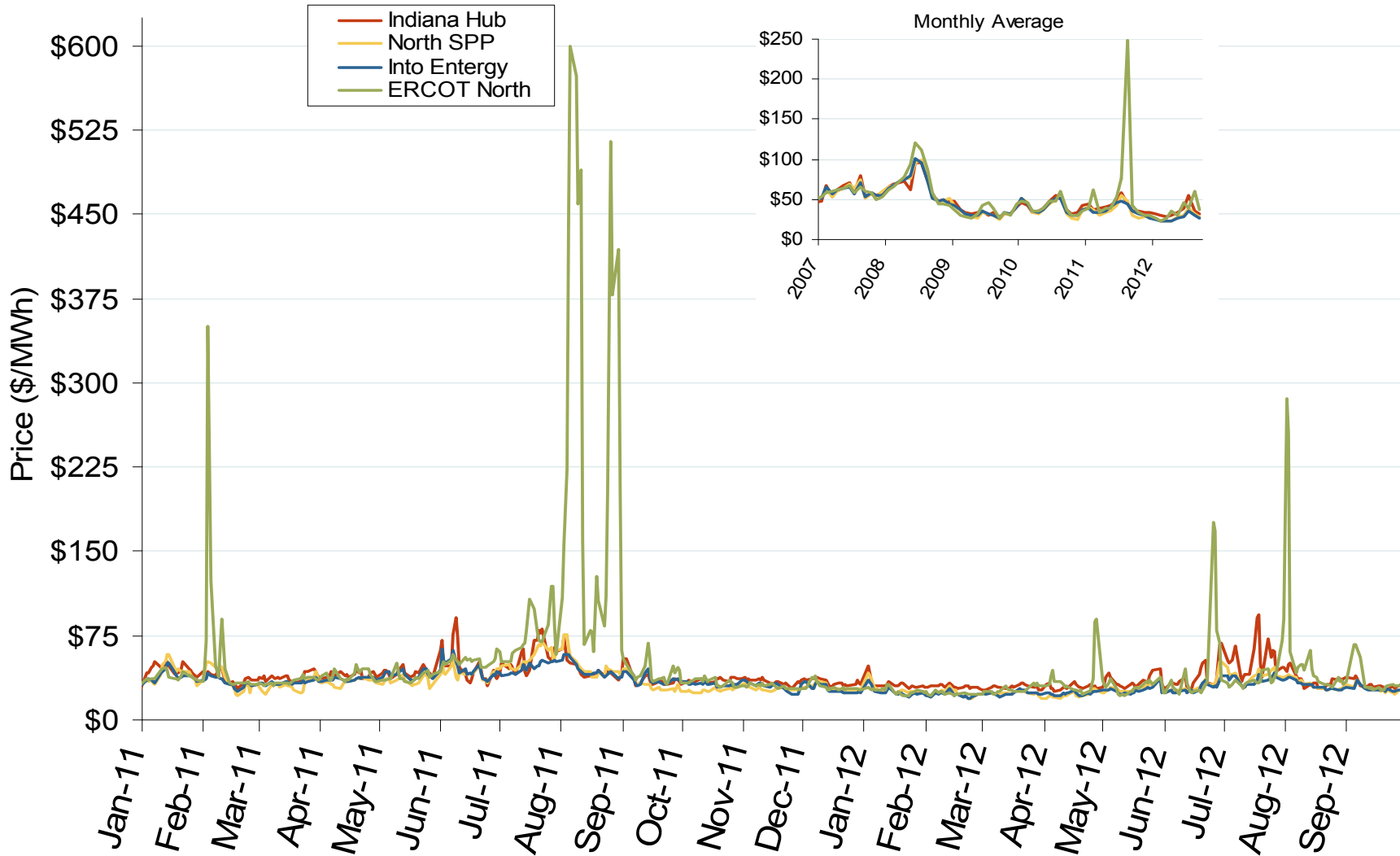
Federal Energy Regulatory Commission • Market Oversight • www.ferc.gov/oversight

Midwestern Daily Index Day-Ahead On-Peak Prices



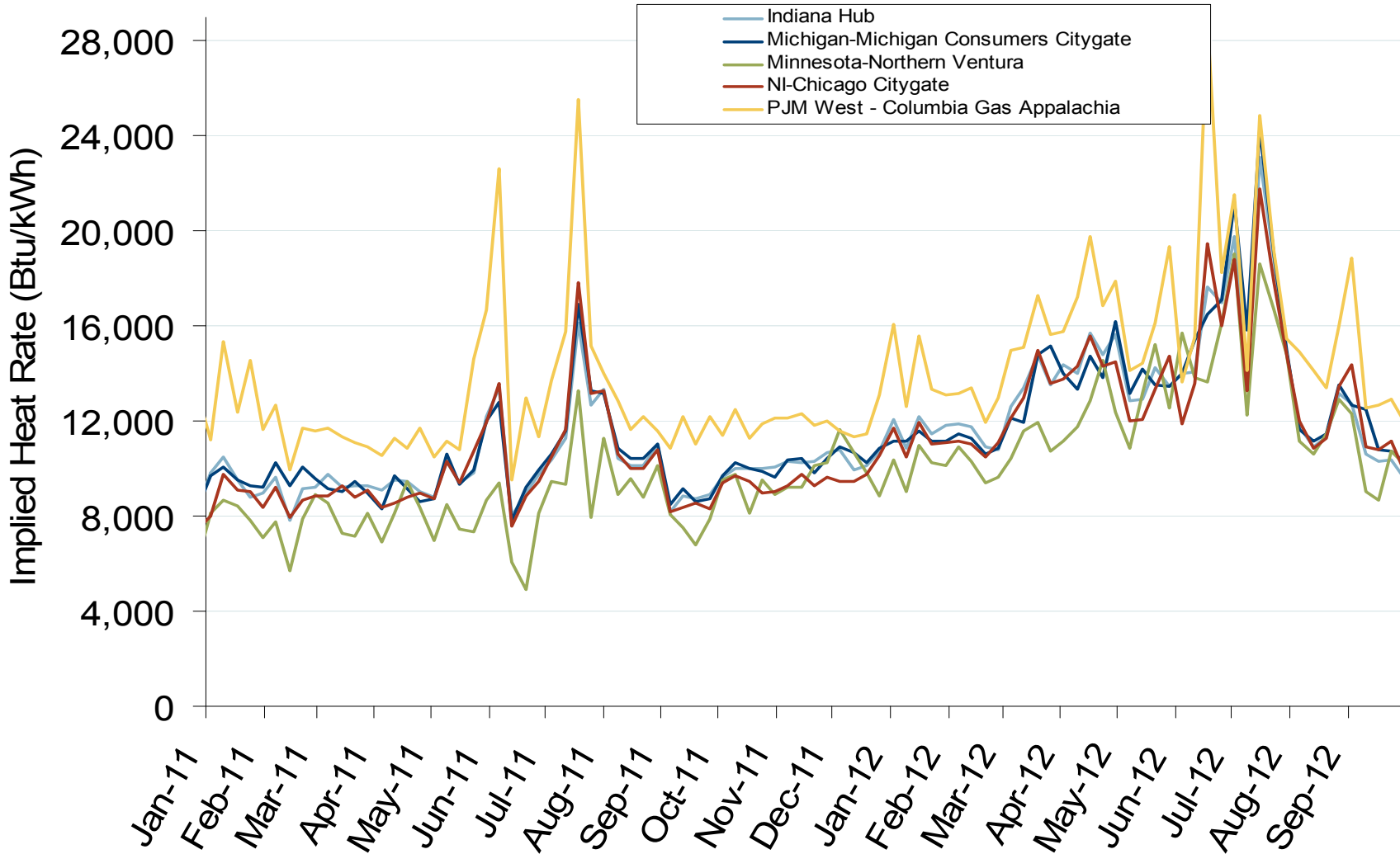
Federal Energy Regulatory Commission • Market Oversight • www.ferc.gov/oversight

Midwestern Daily Index Day-Ahead On-Peak Prices



Federal Energy Regulatory Commission • Market Oversight • www.ferc.gov/oversight

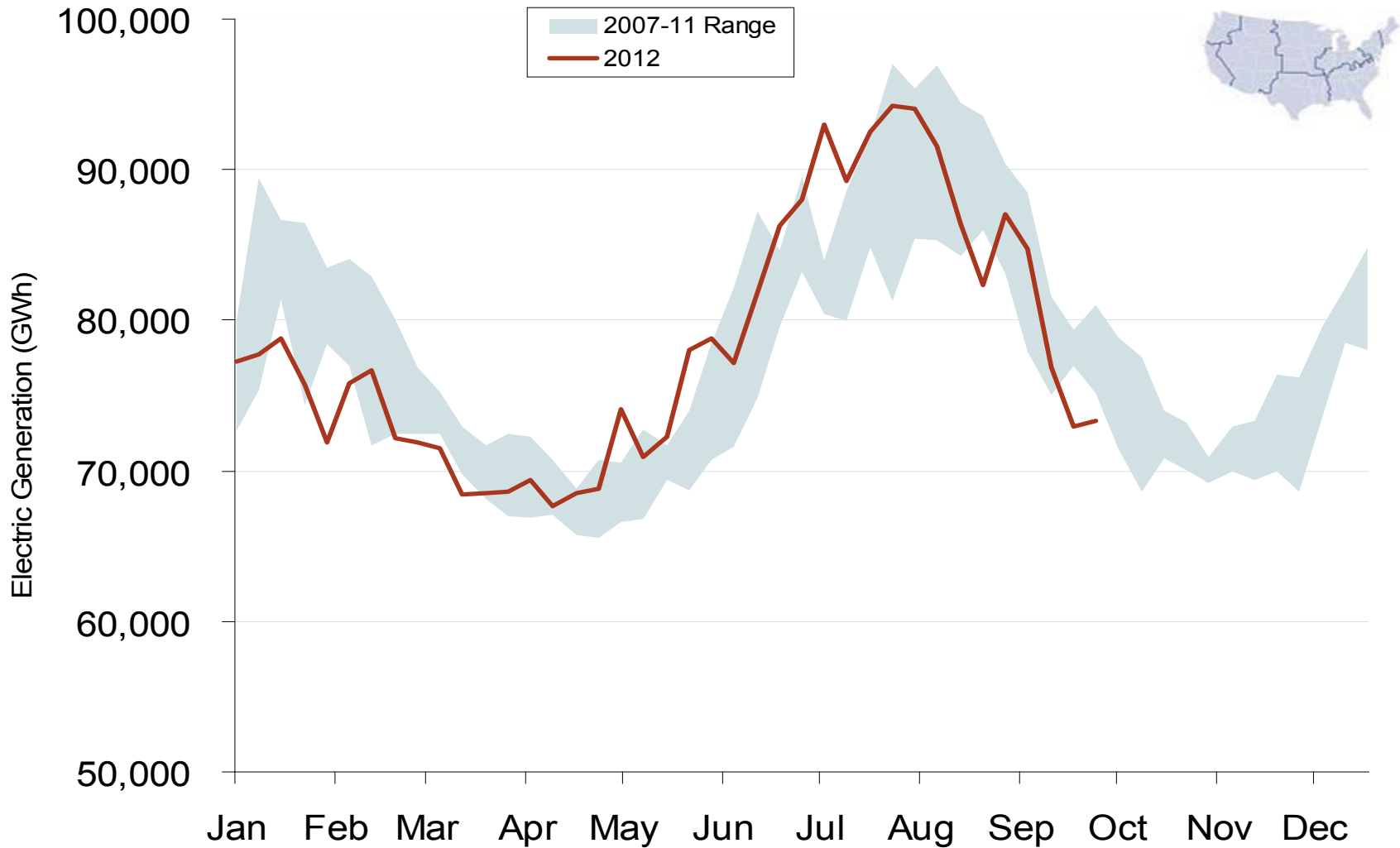
Implied Heat Rates at MISO and PJM Hubs - Weekly Averages



Source: Derived from *Platts* on-peak electric and natural gas price data
October 2012 Midwest Snapshot Report

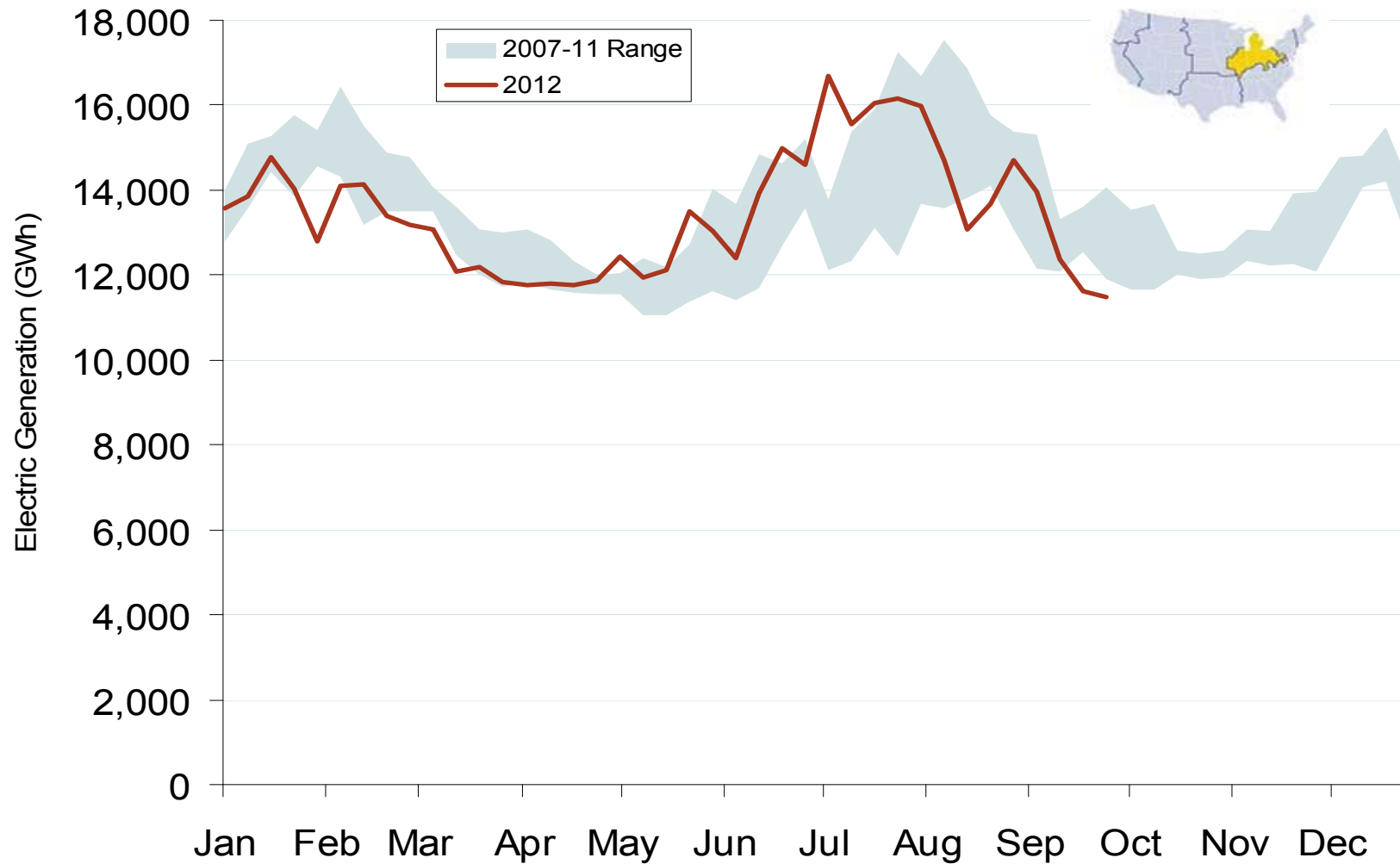
Updated: October 01, 2012

Weekly U.S. Electric Generation Output

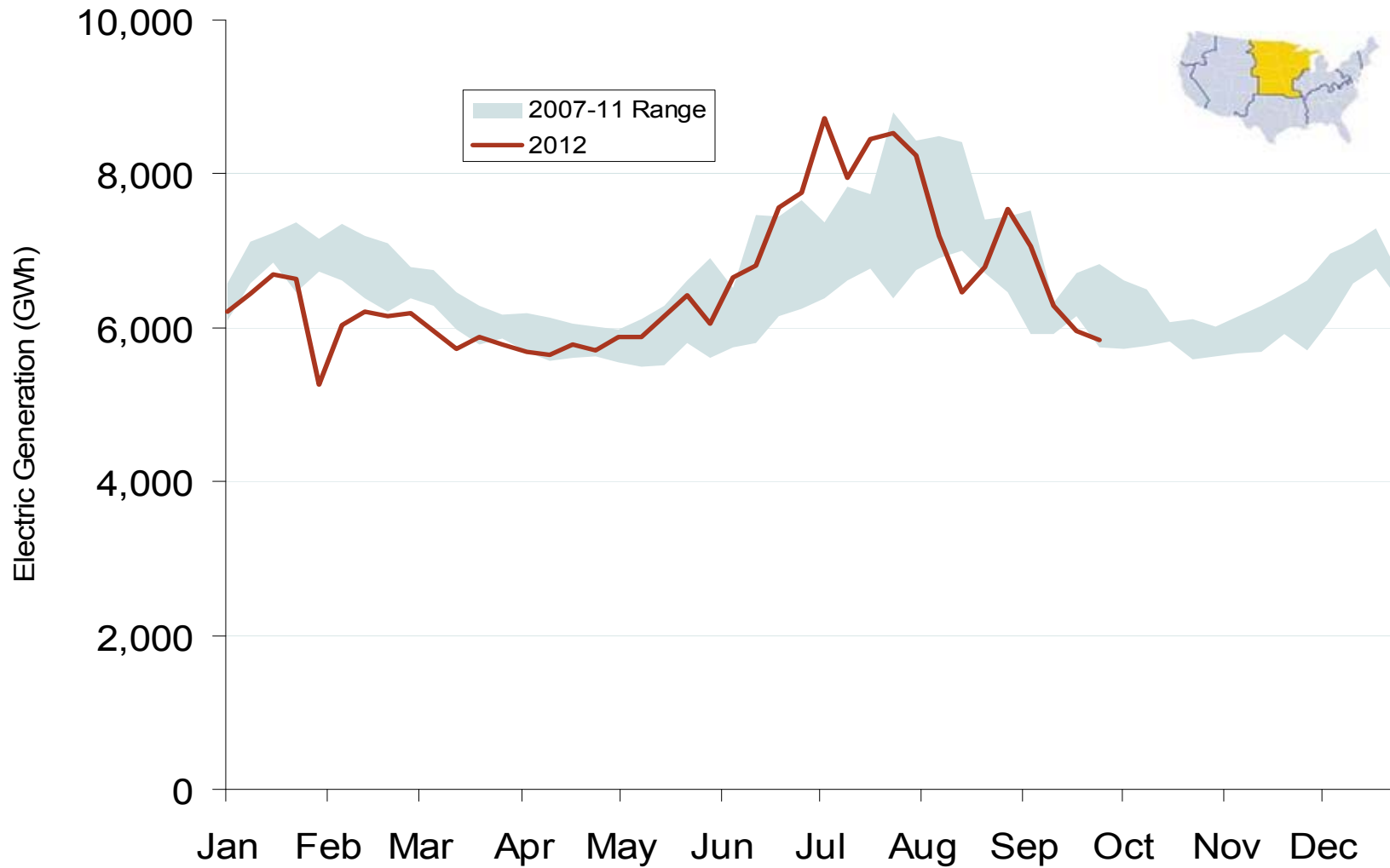


Federal Energy Regulatory Commission • Market Oversight • www.ferc.gov/oversight

Weekly Generation Output - Central Industrial Region



Weekly Generation Output - West Central



Weekly Generation Output - South Central

