

Black maps who is under attack

a socialist economy is a planned economy.
the Gov. set a price for a commodity that
the people can afford. If you sell above the price
you are breaking the law.

white marketing = an ancient capitalist trick
hoarding an item until there is a shortage
then bringing it out to sell at a higher price.

The UN Security Council let Shee 13 as Independence
Day for Namibia. Guyana warns Namibia
not to sell out her freedom.

USSR points out the UN does not guarantee
free elections

26 teachers attend a seminar on steering socialism
in education. They will give Co-op living &
agriculture an important place in their teaching.

Indian Pres. Dasi was forced to re-hire the
minister of Home affairs that he fired for
sympathy to ex-pres. Indira Gandhi.

Librium causes cancer. It is the 2nd most
common drug in the US. It combines &
mutates a common preservative of
meats in the US. To form nitrosamines
a deadly cancer causing chemical.

FBI Director Webster admits he uses newsmen
for all the major networks for information

PP-10-74

10-7-78 neu

Andrew Young

told the French newspaper Le Monde that "there are hundreds, no thousands of political prisoners in the United States. In fact I've been one myself, & I still am in a prison of sorts." He didn't know he was being recorded & has since apologized.

The Soviet Union immediately responded: "Sec. of State Vance fainted when he heard about it. Carter went on TV & said "I'm having a hard time understanding where Mr. Young's head is at." Congress is calling for his impeachment.

Benjamin Hooks a conservative is speaking out about the US attitude of "white's right".

19-7-78

India is expecting monsoon flooding, over 1 million will be left homeless & up to 100,000 will die. They are asking for help.

☛ The Bolivian leftist President candidate is on a hunger strike in a foreign capital to protest the Bolivian Army's interference in the election. If the left gets too strong the military moves in like the moves 2

In Ecuador a leftist candidate came in second in a run off election. Now he will be running against the ruling class.

Despite the threats of arrest, Argentine workers are still on general strike

appearing to a liberal image smear of Huey Newton

The article is filled w/ cheap pornographic descriptions full of informant who won't give the name. Huey was the Defense Minister of the Black Panther Party in the late 60's. He dropped racism & appealed to both Black & white poor to join in a.

The Panthers called the Oakland police an occupying army

☛ In 1968-9 Black P. offices all over the country were raided
Leonard Bernstein gave money to their cause

PP-10-75

Newton took Clever place & started in earnest in
He set up breakfast programs to gain the people support.
Daddy Lee went underground, Huey was set up for the murder
of a 17 year old prostitute, He jumped bail, went to Mexico & then
to Cuba. He is now facing 4 murder charges
In his absence, Elvin Brown ruled the party. He got governmental funding
It recently came out that she was work for the CIA. He received a
6 framed murder charge.

24/7/79

In China there is a move to take Mao out of the cult of
personality. They say he's no god & he sometimes made
mistakes. He openly admitted this. Mao was a Nationalist.
This move plus the fact that China is giving aid to the
Caribbean & 7 African countries may be sign of a move
towards leadership of the Third World as she preaches
in her Doctrine of Three Worlds.

In Spain the October 3 Anti Fascist group
killed a Brig General & his assistant. The
effect of this will probably be to speed the
spread of fascism in Spain.

Zaire - Mobutu

Joshua N Komo

Robert Mwanare PP-10-76

Warsaw Pact: \equiv a defense Pact for all 3rd world & underdeveloped countries
is the pro-soviet military organization

Non-aligned = Communist that are neither Pro-soviet or Pro-China - they are independent. they deal with both

Comcon \rightarrow the communist countries trade organization
is the pro-soviet trade organization & the Warsaw Pact

Pro-Chinese \rightarrow that is they support China (example Kampuchea)
there are 3 Communist groups in the world.

I 1. Pro-soviet = they support the Soviet Union

2 Comcon

2 Warsaw

II Pro-Chinese

III Non-aligned

35 nations $\hat{=}$ nuclear weapons

(Crusades - Christians to fight the Muslim in Palestine
the real reason was to get control of the trade route

2 soviet - Capitalist few - nationalist. they believe that
they own Palestine more regimes
cheapest militarist - shilyq - a process - they are more religious
Cherui - socialist allende - Chile -
orthodox - military

syndicalist - fascist - new ideas

Revolution in France - 1789 ended the Feudalism

1871 - Paris Commune

GDR \rightarrow German Democratic Republic

OAS. organization of American States

CIA Central Intelligence Agency

overthrow - ... allende in Chile

FLN - organization through French out of Algeria

CIA - C

PP-10-77

What nation in Europe started its first limited gov
IT&T International Telephone Comp

4 enemies of Communism thoughts

1. anarchism has 2 meanings: 1) is pure selfishness do your own thing do other as a sincere belief that the world should be abolished

2. Revisionism - has 2 meanings: is trying to work with in the system with out violence. This can easily lead to selling out the other is changing the teaching of Marx & Lenin

3. Social democracy - trying to do without the dictatorship of the proletariat. Serving the capitalist pro to organize & set up to overthrow. Not controlling the army. Example Chile

4. Protokolonialism - jumps into any trouble going on & try to stir it up & influence it to a socialist revolution. Not doing the dull grinding work of building up the economic base & social structure

Colonialism = direct rule by a foreign power. Now colonialism is dying out. Imperialism continues to be very strong

Imperialism = indirect rule by a foreign economy, or the combined international economy system of the big world

Nationalism = trying to get your own nation rich & strong

The Tri-Lateral Commission = is imperialistic: the Tri-Lateral as politically free, refers to Big Business by David Rockefeller, Carter, Mondale & everyone. Carter can appoint to top office. Rockefeller makes the decisions.

NATO (North Atlantic Treaty Organization) an international military organization of major capitalist powers, dedicated to the defense & aggression of Capital Capitalism

PP-10-78

10/7/79 - News

Six Black youths were restricted in Rochester New York, by a mob of white youths

I How many Continents?

- 9
- Greenland
- Arctic
- Antarctic
- North America
- South America
- Europe Asia
- Africa
- Australia - Australia Australia

II Africa Countries

- | | |
|--------------|--------------|
| Zaire | Saudi Arabia |
| Congo | Yazania |
| Mozambique | Ethiopia |
| Nigeria | Somalia |
| Algeria | Mauritania |
| Rhodesia | Libya |
| Zambia | Chad |
| South Africa | Ivory Coast |
| Angola | Morocco |
| Zimbabwe? | Namibia |

Zaire - 4th largest producer of copper
Humphrey Champion of men and rights

Ethiopia - Christian nation that is socialist
Guyana - Country rich in fertile farmland; is attempting to become a one-party Gov.

Zimbabwe leader who was caught by the CIA

Cuba - Country that was the first to come to the rescue of Angola

- Egypt - fascist Sadat
- Israel - fascist Begin
- Chile - fascist
- USA - Capitalist Carter

- Guyana Socialist-Labour
- China - Soc. Hua
- Angola - Soc. Neto
- Ethiopia - Soc. D. H. Col. Melesin
- Hungary - Soc.
- Cuba - Soc. Castro
- VSSR - Common Brezhnev
- Yugoslavia - Common P

pp-10-79

25/7/74

Founded in Addis Ababa, Ethiopia in 1963
OAU = (Organization of African Unity) is having a meeting in Khartoum that will
go down in history. Africa has grown up & they realize that the capitalist
system is falling, the OAU is made up of all the independent African states
except Rhodesia & South Africa. In 1965 Britain was trying to the idea of
majority rule in Rhodesia, organized under the Rhodesian front party
& Ian Smith as leader. They declared independence from Britain and
put economic sanctions on Rhodesia. The OAU met in Harare &
demanded that Britain use military force.

Major changes in Africa

1. The socialist countries have gotten on their feet & Soviet aid. They've
come to realize that in order for capitalism to succeed they need to keep
Africa down, & to do so on her merits.
2. They have come to realization that in unity is strength & they no longer
fear nuclear war. Death is better than slavery.
3. This is the significance of the current OAU meeting of 30 heads of
state. Formerly the US looked up the idea of a pan-African
military force to protect neo-colonialism in Africa. The people
of US & Western Europe won't send their sons off to foreign wars
anymore. They want a Black African "front" army.
4. The African countries started in rejecting a foreign controlled military
force (including the traditional pro-West government like Nigeria) &
ask for a truly united African military force. They suggested invading
South Africa & Rhodesia to destroy the oppressive white minority. (1)
5. They also told the US (but had set Angola up to ask for Cuba to be
kicked out of Africa) that Ethiopia & Somalia were justified in asking
for Cuba & Soviet assistance & that any African country has the
right to do so.

PP-10-80

12/7.

news

China's economy is near collapse. This is the reason so many mainland Chinese are pouring into Hong Kong. BBC reports that many of those going to Hong Kong are the Vietnamese Chinese. Next week a Delegation from China will be in Guyana. China invaded Vietnam air space by 20 miles.

Communist (Communist Trade Federation) just increased their membership to 10 by adding Vietnam. Not long ago they added Cuba. Ethiopia was just invited to join & Cyprus just requested membership.

NAACP: Donald Woods said there is a sense of coming out of the NAACP. (more speaking out since the Parke decision & prof 13)

Gavin says that all people on welfare are of an inferior breed.

John D. Rockefeller III killed in a head on collision by a 16 yr. old (suicide) there is more teenage suicide in the USA.

The trial of the Soviet Zionists come to an end. Alex Danenberg was sentenced to 8 years. In jail 1 yr. In a Siberian Rehabilitation Camp. The other Zionists were found guilty of giving classified secret information to US newsmen. He faces life in prison or the death penalty. Which has not been given in 10 years. Compare this to the US.

PP-10-81

2 Black recruits (70 others) chief of West in S Carolina.
the white sergeant charged only 2 manslaughter

China ambushed in Vietnam 20 miles

" People accused of getting citizenship illegal
with complete of CIA in US. they were former
2 as Nazis involved in explanation

20/7 Scientist are meeting in Houston to discuss Russia's laser defence
mechanism. Thei weapon can stop missile from landing, this put Russia
ahead in the military race. He scientist agreed that the nuclear war will happen.
Our George Town representatives were invited to a reception 2 PM dept. of
China, Chen Hai-lin China recently gave Zambia a \$10 million loan.
they just made trade agreement of Trinidad & Jamaica. He is in
Keyona to make Trade agreements.

II US is testing a new vaccine against the newest form of Dengue
that took 1000,000 lives last winter. Many people believe it is
a virus that escape from CIA bacterial warfare lab.

III Summary of "New Right vs the Old Red Scare" World destruction is
coming. BOKR coming out on the right side in the liberation struggle -

IV Pres. Nyerere of Tanzania came down hard on the US today
in his speech to the OAU meeting in Khartoum.

Don't accused any country of neo-colonialism just because
they want to help another country. West Europe & the
US are interested in being able to get Africa mired to
keep their economies from falling apart.

Yes. Right, or Nyerere!

PP-10-82

- Name
1. Who are the Boss? 777. 83, million
 2. 24 miles of Guyana
 3. What did Calver Young say?
 4. Denton was found guilty of per. in a domestic case
 5. Tell all about Maslow K. - Every man should be own by any means necessary
 6. Tell anything about Yemen
 7. Saddam ali is being charged & Iraq
 8. Battle of Algeria. Arabi people oppressed by the French 730 years. Over an exchange of about
 9. But was important lesson that should help us here. FIA or they claim their own people. They were given warning first.
 10. 40% of more black than white in South Africa. 14-1 in Rhodesia
 11. Patricia Lumley - Tories - Mubata - Change Xmas day
 12. Kampuchea - Pro China opposition - also fascist - married to white woman
 13. PPP - people progressive party Market - Tories
 14. PNC - people National Congress - Government - Bushman - in power
 15. Name some of the benefits of socialism? 96.4 vote for
 16. East & West Germany - after WWII
 17. Guyana - 800,000 9.4 people per sq miles

1/10 of the wage 83

17. We must stress the benefits of socialism. the benefits of socialism must be pointed out on the necessary, toddlers. All school age children. the benefits are
18. Do not speak of anyone being capitalists. they may be selfish at times. We are born very primitive & aggressive animals
19. Socialism is a doctrine of environmental determinism
19. Don't look back. medical care
20. We have pure socialism - sharing our possessions, because of this structure our children have more love. there could be no other place for us at this time. there is no need to look back. To talk about old things indicate that you are not
21. People should stop walking around talking socialism & not living it
22. Stop idolizing family
23. Stop saying hurting things to companions PP-10-83

People want to fight a guerrilla war, no one is ready.
If you want to fight, you first have to learn.

How to treat the children here & comrades first.

20/7/78 There are 90 detention (concentration) camps maintained in the US by the police for immediate use in national emergencies. The FBI keeps a list of politically dangerous persons who will be rounded up. This program began in 1939 under Pres. Roosevelt. It was supposed repealed in 1971.

The Quakers first gave a report that the camps are still functioning. Some of the camps are located: Allenswood, Pennsylvania, El Reno, Oklahoma, Florence & Wickenburg, Lake Lake, Calif. + Eden Park, Florida. The Seven Bank in New York City gave Chile \$2 million each to the Central Bank of Chile. One of the banks South Eastern Trust National is known for handling CIA money. The vice-pres. Lowrey with the father of Michael Lowrey who is accused of murdering Orlando Letelier the Chilean Ambassador to the US. He visited People Temple & was warned not to go to Wash DC. He went & was murdered. The DINA - the Chilean Secret Police was involved.

IV Garbage piles up in Memphis streets as the garbage continues. King was killed when he tried to organize Memphis garbage workers. He was also talking about opposing the Viet Nam War. In the states Thorne steak costs \$3.88 to 4.66 lb. Cheap hamburger cost 2.04 lb.

V The Japanese government told us we should have shot down the National Enquirer plane that flew low over Fresno town.

VI North Yemen invaded South Yemen.

PP-10-84

Algeria (socialist FLN)
 Angola (Communist, pro-soviet - MPLA ruling party)
 Albania (Communist, independent non-aligned)
 Afghanistan pro-soviet military government
 Brazil (Fascist military government)
 China (Communist internationally linked to US)
 Mauritania (recent left coup - friendly to US imperialism)
 Zaïre (Fascist puppet to US imperialism)
 Northern Yemen (Communist - ally of Saudi Arabia (Fascist) the Liberation front of Northern Africa)
 Southern Yemen (Capitalist - ally of Saudi Arabia (Fascist))
 Israel - Fascist - At military base
 Egypt - Fascist - SU sea base on the

What

to become a true Socialist, Communist

1. Authority - (leader)
2. Unity 17 Justice
3. Solidarity 18 Sexism
4. Sensivity
5. Cooperation
6. Knowledge - politics
7. Understanding
8. Bravery
9. Loyalty
10. Criticism
11. Friendship
12. Labor
13. Endurance
14. Sacrifice - selfishness
15. Responsibility
16. Equality

Guyana - See the million
 PP-10-85

<u>Countries</u>	<u>Politics</u>	<u>Size</u>	<u>Population</u>
Guayana	socialist (PNC) non-aligned	83,000 sq miles	700,000
Afghanistan	Communist pro-soviet	3x size of Guayana	18 million
Albania	Communist non-aligned	1/8 size of Guayana	2.6 million
Algeria	socialist (FLN)	11x size of " "	16 million
Angola	Communist + (MPLA) pro-soviet	6x size of " "	5.8 million
Brazil	Fascist military Gov. pro-US	38x size " " "	128 million $\frac{1}{2}$
China	Nationalist Communist - lack of US	40x	the population of 5-
East Germany	Communist pro-soviet	just sm. than Guayana	1 billion (4 pop. in)
Ethiopia	socialist	5x size of Guayana	17 million
Israel	fascist military Gov. (pro-US)	1/10 x size of Guayana	21 million
Mauritania	moderate left friendly to Polisario	4x size of " "	3.5 million
Arab Republic of North Yemen	military Government Capitalist - military Gov. belongs to Arab League	4x size of " "	1.5 million
People Democratic Republic of South Yemen	military government loc. pro-soviet has a Soviet sea base	1/10 x size of " "	7 million
Federal Republic of West Germany	Capitalist - brags about inheriting Hitler's Third Reich	1.4x size of " "	2 million
		11x size of " "	62 million

pp-10-86

Malcolm X 1926-1965

1. Early life
2. What religious organization did he join?
700 million Islam Muslims
3. Who was the leader? Ubayd Muhammad
4. What was some of the teaching of the religion?
5. Why do you think the group respect whites?
6. What was some of the things Malcolm spoke about?
7. What caused Malcolm to split the group?
8. What was he trying to do when he was killed? who did it.

Malcolm X said there should be armed struggle by any means necessary. As a child his house burned. His dad was killed & his mother placed in a mental institution. After the death of Pres. Kennedy he made no more claims for territory or payment. Was suspended for 90 days by the Muslims.

Because in regard to Kennedy he stated that "Chickens" come back to roost:"

stated that to teach hate for your self is worse than teaching hate for others. Blacks have less college positions today than at the time of Malcolm.

He stated that the personal problem is not solved until all the Blacks are solved.

Jesse Jackson & Roy Wilkins were in pay of FBI

He should never have argued the Muslims. This is just what US wanted them to do fight Black vs Black. He went to Paris but was not allowed in made the statement that he didn't know Paris was a satellite of the US. murdered in Audoborn Ballroom in front of his wife & children, see new report PP-10-87

24/7

The Guyanese & the Chinese talked for 5 hours on economic, political & cultural aid. The Soviet Union is pleased that Guyana is on a strong socialist course. The constitutional bill sponsored by P.M. Burnham passed the Parliament 37-9. The ^{the Conservatives} PPP & the United Front voted against it. Burnham promises free elections.

In South Africa: 6 policemen & 3 civilians are charged with first degree murder of Steve Biko & another man. A colonel was arrested who was in charge of an interrogation of Steve Biko; there is the power of a unified public; this power was first shown in Palavia when the people forced the military to admit to election fraud & to promise free elections.

US Sec. General Waldheim attended the OAU Conference in Khartoum, he expressed his concern the nuclear war was coming over Africa. He said he wanted all foreign powers out of Africa including the US. He also visited with leaders from Ethiopia, Uganda, Syria, Saudi Arabia & the head of the Palestine Liberation Movement & stopped by Yugoslavian slave.

While the head of state of Guinea Bissau was killed at Khartoum his second in command was killed. The Soviet Union is upset with Iraq for executing 23 radicals. Iraq is pro-Soviet but they are also nationalistic. They are much like the Kampuchians who are paranoid have racial prejudices & they also put travel restrictions on all foreign diplomats (including Soviet).

Sudan & Egypt is in trouble. The opposition parties (that he banned) are demanding recognition & complaining of election fraud.

PP-10-88

Rosenberg

July 15, 1950

ask
when
where
why
how

Ethel & Julius Rosenberg were few who stood for civil right, ~~and~~ ^{they were communist} ~~Communism~~.
They were ~~guilty~~ convicted of giving secrets of the atomic bomb to a Soviet spy and died June 19, 1953. The reason for framing them were that Truman wanted support for the Korean War against the Communist, and they wanted people to believe the Russian had stolen the plane. There was a Jewish judge and prosecutor. Eisenhower offered them life imprisonment but they refused to beg mercy tho they had 5 sons.

The relationship between the Rosenberg & People Temple in USA. ^{there are parallels} We have been We have been persecuted unjustly because we a communist plus we. We have not committed a crime.

1/2 file box

PP-10-89

Sudan
Pres: Maj. Gen Nimeiri

area: 967,494 — Pop: 16,550,000

Capital Khartoum

Language arabic

Religion Moslem, Christian animist

Sudan became independent in 1956. The military group rule the country - It was 92% Moslem. Much racism in the country. The southern people are black & Northerners, white & arab have dominated the country. 1 million blacks killed or had to flee. 90% are illiterate - women are not free. Craze for cotton. CIA was involved in the racial war. they were responsible for most of the bloodshed.

Nigeria
is politically free, but capitalist & bought up in international imperialism

PP-10-20

Angola

is in southern Africa. The borders were formed by the Berlin West Africa Conference in 1885. Angola became a Portuguese colony. Angola was a source of slave labor in Brazil. 175/75

The MPLA a Marxist Leninist organization took over the country. The country exports include diamonds, gold, iron & oil. They also export coffee, cotton, corn, & guerillas from Namibia (a colony of South Africa) find refuge in Angola.



Nets, head of MPLA is now President. It is a Party, Socialist State. Population 5.8 million. It is 6x the size of Guyana. 91% of the people are Bantu. 6% are European, other various tribes Vimbunda; who supported UNITA) & the Bakongo who supported FNIA) both the opposition parties played tribal politics. Only the MPLA called for unity. Religion @ 1 ribel 50%, Catholics 38% & Protestant 12%. Angola is a mineral rich country, exports includes diamonds, gold, iron & oil. Mobutu claims Angola is involved. Mobutu supports the FNIA. He & the CIA are still trying to overthrow the MPLA - revealed by Sen. Chate-Clark

AP 10-93

Albania Capital Tirana

Is non-aligned country. It is $\frac{1}{8}$ the size of Guyana
Religion: Moslem 70% Greek Orthodox 20%. The
population 2,670,000. Ruled by the Peoples Assembly,
which meet twice a year. The labor union worker
run the country. The Shkumbi river divides the
country. 2 racial groups. The Ghegs ^{region} to the north
live in the poor land, fertile Farmer. Ghegs
the Toks to the south - live on the fertile land. Farmer
& have some industry.
Two large population of Albanians outside of the
country one in Yugoslavia & one in Mex. U.S.

the location of Albania is on the west coast of the Balkan
Peninsula bordered by Yugoslavia, socialist nation - non-aligned
by Greece - was pro Chinese. Guyana is 8x larger - 200,000 ^{popul.}

1. Ghegs -
2. Toks

Better land opportunity to develop their culture & their
Education

PP-10-84

Algeria capital algeria 19
Language ^{Arabic} French & Arabic - Located in northern Africa
President is Houari Boumedienne. 1930 - 1963
the French conquered Algeria. They ruled the
country but the FLN which is now the ruling
country. The ^{national liberation front} gave refuge to Black Panther
in 1960. the major means of production is
owned by the people, 16,000,000. Religion
98% muslim $\frac{1}{3}$ of the work force can not
find work. $\frac{1}{4}$ of the land is desert.
1956 -

Afghanistan
they had a 24 hour revolution & joined
the Warsaw Pact immediately, 3x the
size of Guyana. Population 18 million
Religion 99% Muslim. Very little of the land
is farmable. It is mostly mountains
Industry is not developed. The country
does have mineral wealth.
Afghanistan was important because it became a buffer
between Iran & the Soviet Union
North of Pakistan, bordered also by China,
Soviet Russia, Iran

PP-10-95

Mozambique

Received its independence 3 years ago under the Marxist-Leninist party FRELIMO. Since that time there's been free medical care, stressing preventive medicine.

The entire population was vaccinated for tetanus & dysentery in 60 days. Increase in involvement 100,000 people to read & write. They had their first free election. Mozambique has had floods & has received aid from Sweden, China & Russia. They gave refuge to families of the P.F. & the Smith & Vorster governments have been bombing them daily w/ US planes & hardware.

Russia says she will not allow Mozambique to fall or the destruction of the P.F.

PP-10-96

Ethiopia
Central Eastern Africa
Socialist

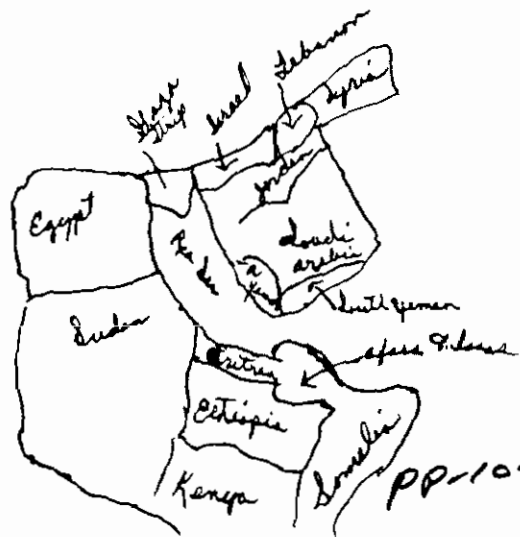
471,000 sq miles
54 size of Europe
27 million
South Yemen is on the other side of the Red Sea

Black Ethiopia trace original
Conquered by Italy in 1936. Eritrea was a part of Ethiopia
Galla 33% Hamara Tigie 20
Somali 6% Gurage 4% more racial integration
55% are Christian 35% muslim.

military Co Ho Hali Sali 1934
military is supported by the Church & student groups

Hararte Isajet Provedent 75% of the land own by less than 1% private
Eritrea is a province of Ethiopia something like a state
50% help to bring down fascism

1. Ethiopia is important as the only African socialist country in the Red Sea.
2. There have been border fighting for between Ethiopia & Somalia for years
3. Ethiopia is now bombing Ethiopia Somalia cities under control
4. By using political & military means Ethiopia brought the agreement of Eritrea
Ethiopia offered sovereignty & they offered to drop taxes on farm lands.
5. In the late 1890s the Italians took over Eritrea - cutting Ethiopia off from the Red Sea
under Mussolini the Italians invaded Ethiopia, it was the next other place.
6. It has 2 racial group & there is more integration than most other places.



Somalia

is in the Horn of Africa. It borders Ethiopia. Somalia has been trying to annex Ethiopia's Ogaden Desert for years. For this reason the US Resisted Saudi Arabia's demand that she give Somalia military aid. The Soviet Union & Cuba are giving military support to Somalia. After all these years of aggression Ethiopia warned Somalia if she continues the battle would be taken to Somalia said Somalia continued & Ethiopia bombed Somalia cities Somalia is expansionist

PP-10-98

Zaire ^{Belgium} (the Belgian Congo)
27 million people
11x the size of Hungary

located South Central Africa. Fascist -
Prime minister - Mobutu dictator U.S.
Minerals: Uranium, oil, gold, cobalt,
Copper, manganese.

Patrice Lumumba overthrown by CIA
was captured & tortured

the united states can not function without the
resources

Religious organization - started in Europe

Crusades - wars - Jerusalem
1095 - 1292 Christians crusades fought the turks
- about economic trade
1500 years fight

PP-10-99

South Yemen
Is the most fertile part of the Arabian Peninsula, the largest part of the peninsula is the nation of Saudi Arabia which is mostly desert. However it is full of oil.

South Yemen was originally a British Colony. The military in South Yemen had a coup & assassinated the South Yemen President. A strong pro Soviet Yemen are just ask to join Communism -

North Yemen
Is in the capitalist camp. They belong to the Arab League. They are ruled by a military clique that is close to Saudi Arabia. In 1962 there was a civil war between the left & right.

Egypt
Under Nasser was socialist. He was died mysteriously of a heart attack. Egypt is now fascist under the dictator Sadat. The Soviet Union backed the left. Saudi Arabia supported the Right. Both countries export mainly agricultural products. They are known for their mocha coffee.

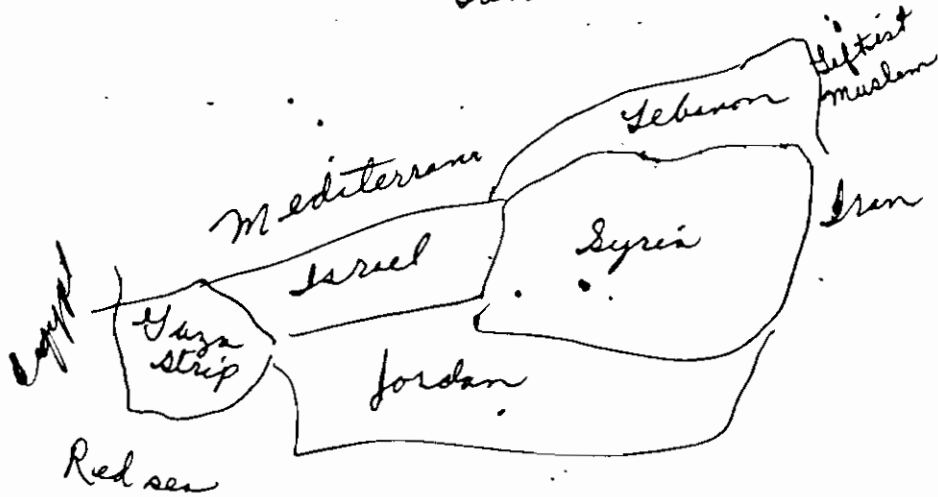


PP-10-100

Israel - Zionist imperialism on
trial in the USSR,

In the mid-East, they are one of the greatest threat to world peace. They have the bomb & are ruled by a Right military government under the racist P.M. Begin. He moved whole villages of arabs out of the way, when the Jews took over Israel after WWII. The Jews lost Israel less than a 100 years after the death of Christ. The Roman took over, they spread out thru-out Europe. Many of the religious Jews always thought they would return to their homeland. Some of these capitalist Jews cooperated w/ Hitler to get the fascist movement in Europe. In 1949 Israel was declared a state. Since that time the arabs & the Jews have fought continually. The arabs that were moved off their land were moved into refuge camps where many still are.

- pharisees - Christians
& fascist
↓
try to take the controls from
Laborion



PA-10-101

09/17

Spain

Spain is in the south of Europe, just across the mediterranean from Africa. In her past, Spain was invaded by the moors from Africa who ran Spain for 600 years. It is 2x size of Guyana & a population of 36 million. In the 30's the people rose up against the King & set up a republic.

India

The Delhi government Jeeva de Jor is in trouble. He has been PM for 15 months. Indira Gandhi was PM before him. Her Gov was pro-Soviet. The Gov is trying to frame her, but her popularity with the people grows. The US, as pro-US, he refused to give them control of India's nuclear reactor.

PP-10-102

1917

Jamaica

Prime Minister Manley

is a large Caribbean Island below Cuba. It is socialist however it is still ruled economically by the multi-nationals. The Gov. owns only 10% of the means of production. The military is still in the hands of the old wing. Manley was elected by the people that put him in the same place that Allende in Chile. Unemployment is 30%. It has 2 million people. It is 1/60 the size of Guyana. It is mainly a black country. They have a Black Nationalist country founded by Marcus Garvey. Jamaica's exports are bauxite, bauxite & mercury. Tourism was big until Black Nationalist started killing white tourists.

Japan

Japan is an island chain. 1944 USA dropped 2 bombs on Hiroshima & Nagasaki. Japan is 1/6 the size of Guyana & has a pop of 112 million. Ruled by a Emperor - Hirohito, but he has no political power. US occupied Japan until 1960. However under the ANPO Treaty the US maintains her bases. Capitalist poured mercury into the river & cause many people permanent crippling. The people organized against the owners & got benefits for all those affected. The red army has been very successful in organizing the farmers who have been moved off their land. Japan exports more than she imports this is causing much problems in the capitalist world. Women are still oppressed. They call their husband - master. Japan agreed to decrease her exports if the US will decrease her oil imports. This would stabilize the dollar (the many will not be able to get to work many will die of cold). The Japanese Red Army blocked the International Airport over 8000 people were injured, six people were killed when police fired into the crowd. The Red Army is one of the world's most successful guerrilla groups inside a capitalist country they are organizing the farmers & poor workers. If Japan were to fall it would affect all capitalists.

PP-10-103

2017

Bolivia

is in South America. a high plateau lies in the west between two chains of the Andes Mountains (the highest mountain in the Americas) La Paz (the capital) is here. 13,000 ft. (we are 6000 ft. here. the remaining 2/3 of the country is part of the Amazon jungle. Here is where Che Guevara tried to lead a guerrilla movement to liberate Bolivia. However he put ~~sex~~ above the revolution. Longa was a CIA agent. He led the queen back to their old-ord. Bolivia was part of the Inca civilization conquered by the Spanish. In 1825 Bolivia declared her independence from Spain. Now a military Government Pres. Banzer in Che Bolivia were not ready for revolution when he died but he planted the seed & it looks like it's about to bloom.

PP-10-104

Brazil

is the largest country in South America, it borders every S. America country but 2. It is 38% the size of Arizona, the 6th largest country in the world. Population 138 million this is 1/2 the pop of S. America. German-Negs. & Japanese - 62%, Black 11%, Bush Negroes. mixed 11%

Rio de Janeiro = the home of the Carnaval.

4 days from Oct Wednesday to Good Fri.

the crowds take to the street singing & dancing

the last 4 presidents have been generals.

the CIA helped replace earlier moderate left Gov.

they have trade agreement with the

Soviet Union. However the Gov. is fascist.

they have practiced genocide on their Indian

pop. Gueillas rule the north

U.S. has considerable investment in Brazil

many industries have been nationalized

there is free press in Brazil

abortion is illegal but 1 1/2 million illegal

abortion are performed a year.

It is mineral rich country

Pedro, avateres Cabral claimed Brazil as

a Portuguese Colony in 1500

PPP

Public protection program

" " torture

Genocide on Indians

mineral rich

12.

PP-10-105

Guyana

83,000 sq. miles
population 700,000
Socialist (non-aligned)

1. PNC People National Congress. It is the ruling party.
Prime Minister Burnham
Dr. Reed

2. PPP People Progressive Party
Dr. Forcia - Forcia

3. Jonestown's Agriculture department is divided into 10 sections
In Guyana the government nationalized the big business. The people own
80% of the means of production.

Burnham sent his resignation to Breznev on the death of his
successor. Now it looks like Politburo may lead the country
Politburo is the ruling group of the Communist Party.
A 25 member Chinese delegation is touring the Caribbean & making
trade agreements. They have already made agreement with Trinidad
& Jamaica PM Manley. Next they are coming to Guyana

The Guyana Chronicle demands an apology from the Catholic Church for
speculation that the PNC prevented them from publishing for 2 weeks
to keep them coming out against the referendum, which passed by 90% of
the vote.

PP-10-1/76

Agriculture is the backbone of building the communist society.
Jonestown is a model for the rest of Guyana. Guyana & many other
socialist society is moving away from the urban (city-like) society toward
the agriculture cooperatives. Some other countries that are changing over are
Mozambique, Vietnam & Zanzibar. They are moving people out of the cities
into cooperation.

China

The oldest country in history, 4000 years. It is over 90% the size of Russia. It has more people than any other country, population 1 billion. If kept their country is destroyed they still can populate the earth. The Asian gene is dominant. The Chinese had a great civilization as did the Blacks in Africa. For a long time China was the center of an Empire. This was & is populated by the Han. The surrounding countries made up of non-Han Asia formed an outer territory - loosely ruled by the Chinese Emperor. The European Europeans forced China to draw up her present borders while they divided up Indo China among themselves. This hurt the Chinese economic base & some of their aggressiveness toward Vietnam & Mongolia may be an attempt to re-establish the old Empire. The Europeans also divided up China among themselves. Hong Kong a part city of the South China Sea is still British colony. During this pre-revolution times among the whites that exploited the Chinese were the white Russians. There were the Capitalist that fled from the communists. Most of the recently the Chinese now feel due to do with the treatment from these white Russians. It is a one-party Communist state ruled by a dictator of the Proletariat - Mao Tse Tung until his death. There is no inflation in China. Everybody is employed. Only 11% of the land is farable. Mao tried to break down the different between city & country. The agriculture communes are self sufficient & as such they can continue to function if the big cities are blown up.



1. Hua Kuo Feng
 2. third largest coal producer
- PP-10-107

Mauritania

Muritania

we just over thrown by a military coup. The
 take over by a defect segment of the military. The
 Soviet Union is unwilling to sell nuclear war over
 Mauritania. They seem to have some agreement with
 the Polisaris. ^{they were free.} The Polisaris is a liberation front. They
 began in Spanish Sahara. It is mostly Sahara Desert.
 The drought turned the country into a disaster area.
 There is little farm land. Millions faced starving to
 death a few years ago. The Soviet Union send most
 of the food that saved the people. Over the years
 there has much racial conflicts. The country is
 made up of moors, arabs, Berbers & Blacks
 The arabs have dominated the country, there is a
 tribe of arabs who are nomads, herders of



Mauritania
 is located on the
 North west coast
 of Africa.

PP-10-108

Great Britain or United Kingdom

C the same as Great Guyana. Population 56 million
 Great Britain is a large island chain of Northern
 Europe. England is only one part. Other parts are
 Wales, Scotland, Northern Ireland, Channel Islands & the
 Isle of Man. During the height of its colonial period
 Great Britain's Empire covered 3/4 of the world. England
 "The sun never set on the British Empire." She
 not only dominated the world thru its military but also
 thru its Culture. Today English is spoken all over the
 world. Guyana was an English colony. also US. Like
 all empires it fell. There are only 5 countries left.
 Northern Ireland is actively fighting for their independence.
 the liberation front is the IRA. Scotland unemployment
 is high driving Scots into the army where they are shipped
 to Ireland to fight the Irish for the British. In the last
 50 years 2 1/2 million dark skinned immigrants have settled
 in England (people from her colonies) Now with unemployment
 high, the capitalists have whipped up racism. they are no longer
 safe on the streets P.M. to be Margaret Thatcher promises to send
 them back.



PP-10-109

27/7/78

Rhodesia: Rhodesian troops invade Zambia, the PF is fighting in the street of Salisbury

Namibia: The OAU & the PF pledge support to SWAPO

Yugoslavia: Pres. Tito expresses concern about nuclear war over Africa at the Belgrade Conference

Bolivia: A right-wing military coup destroys hopes for free election

Chile: Pinochet dismisses a right wing General
Egyptian Economy in state of emergency

Egypt: Egyptian foreign Minister in meeting in Kuwait
Kareem of Iraq. They threaten military action against Kuwait.

Portugal: The Government resigns over economic problem

Japan: has a \$50 billion surplus. Japan won't keep her part of the bargain unless the US does.

New Zealand: Reports of election fraud.

USSR: owns no property in Africa has the world's most advanced education

PP-10-111

Angola: Junta Acorda give the full backing of)
Africa to SWAPO

Ethiopia: Continued bombing of Somalia

Prop. 13 succeeds in Michigan

1000 Jesse Wade supports demonstrate in Plain
Georgia

ZANU = blame the Eagle Horn Massacre on Black
mercenaries working for Ian Smith

Black Community groups demands (investigation
into Malcolm X's assassination

England World's first test tube baby born.

Mayor Jackson of Georgia under attack from
the press

Andrew Young says Mugabe could win election

PP-10-112

23/7/74

James Earl Ray was convicted of killing Martin Luther King. He contacted Andrew Young from his jail cell to ask for help. There has been 2 attempts on his life. He says he has evidence that the government is involved.

The press is now after Jimi Jackson. He's featured Atlantic Monthly. Solzhenitsyn has attacked the press. He says they are powerful & irresponsible. He escaped Russia & has been living quietly on a farm that he ever saw in the Soviet Union. This is an interesting statement coming from a man better about being in jail under Stalin.

The Postal workers in Richmond are having a wildcat strike (that is a strike that the union won't give an O.K. on). They are holding out against White House threats to take military action. They handle mail from the East Coast & Hawaii.

One thousand people began a walk from SF to Washington D.C. to protest Congressional attempts to dissolve a treaty with the American Indian. They met violence & apathy along the way. On Sunday they had a POW-WOW of the White House. Only 20 people were there. They demanded the release of the Puerto Rican liberation front that have been in jail in the states since the 1950's.

About 100 Senators make between $\frac{1}{2}$ million to $\frac{2}{3}$ billion a year. Many of these men were not rich when they entered office. Example SF Hayakawa of Calif. (famous for his cruel action against the striking SF State students). John Glenn who rose from nobody to a ^{congressman} & a millionaire.
PP-10-113

and since price all coming down for the poor, this is a proposal
60% put in taxes for American (the rich will get richer)

a right wing group who call themselves
"Former Prisoners of the Reds" attended a
Prisoner of War Contest decided to give
"New Governor Jerry Brown the Benedict Arnold
Award. (Benedict Arnold was a traitor during
the Revolution) they gave him the award for
appointing "radical" Tom Hayden. Brown appointed
him to Director of the Solar Energy Project. In
the report in the N.Y. Times these patriots said
that Hayden said we are all Viet Cong. He meant
that the US working class had a lot in common
with the poor Vietnamese fighting for their freedom
they used it show he was a "commie" about
Brown they said. "He's not as much pro-Solar as
he is anti-nuclear & pro-communist." "McCarthy is
is back."

an article in the Chronicle said many third world
countries need some sort of humanitarian aid
by they are better off getting it from religious
charities. The article says that for every dollar
the US government sends in aid only 8¢ get to
the people while 92¢ out of every dollar from
religious charities get to the people. This
is an attempt to cut aid to the third world who
is now suffering from famine in the Sahel &
flooding in the monsoon.

pp-10-164

Sen. Clarke (who told the public that the CIA was
trying to destroy the Angolan government) is
being his seat to a right wing racist, Republican
Sen. Clifford Case but his seat to a John Birch
who is a friend of Ronald Reagan. There is a war
all across the states to eliminate property taxes

Senegal

is one of the small West African coastal countries. It was France's first colony. It had the first university & museum in Africa. It is smaller than Guyana but its population is close to 5 million. It is a socialist government headed by Pre. Senghor. It is a non-aligned, having relations with USSR, USA, China, & the Arabs. China just gave them \$5 million in aid. They still have strong ties with France. The OAU made demands that they be more independent. Senegal was one of France's. The OAU made demands that they be more & Senegal was one of France's peanut kingdom & 80% of its economy depends on peanut farming. It has an elite class the capital Dakar. 3/4 of the people live in the country, they are illiterate & their way of life has not changed from the ancient tribal customs. In the spring of 1965 they hosted the first Festival of Negro Arts. Langston Hughes & Duke Ellington came from the U.S.

115
PP-10-108

27/1/78

The first test tube baby was born in England. It was a 5 lb. baby girl. The egg was surgically removed. The sperm was added to the test tube. In another case a doctor destroyed a test tube baby, fearing they were creating a Frankenstein. The couple who paid \$30,000 for the baby are suing him for \$5 million dollars. Many scientists fear this breakthrough will lead to cloning - that is making human robots strong & dumb - they will work under any condition & not protest.

The fascists are rioting in Tokyo, Japan. It was all the police could do to keep them from destroying the Chinese Embassy. Japan & China are signing a new treaty. The value of the Japanese Yen increases while the value of the US dollar falls.

They discussed increasing taxes on farmers & simplifying the tax system at the Bonn Economic Summit.

PP-10-166

Selfanalysis - identify

- hostility
- Commitment
- elitism
- Intellectualism
- Reaction to authority
- How you feel about sex
- How you see yourself
- Sexual games
- How do you react to physical

Karl Marx: He was a German philosopher that developed the philosophy of dialectical materialism. Dialectics is the study of how opposites war and form a new resolution. Materialism is the philosophy that there is nothing mystical about the world, but that

117
PP-10-1007

I Socialism & Communism.

Included in stages: 1. Dictator of the Proletariat.

Start with Feudalism → Capitalism → Socialism → Communism
Socialism is a Nationalization. The Government takes over the
means of production.

Communism = the stateless society = to reach a place where there
would be no need for a Gov.



PP-10-118

Shock

I a state of collapse resulting from acute peripheral circulatory failure. It may occur following hemorrhage, severe trauma, surgery, burns, dehydration, infection or drug toxicity.

II It may be immediate or delayed, slight or severe, even fatal. It may also result from an injury, bleeding, pain, fear, fright, anesthesia, or many other causes.

III Every injury is accompanied by some degree of shock & should be treated promptly. Syncope is caused by insufficient blood supply to the brain in certain persons & resembles shock in symptoms & treatment.

IV Symptoms:

1. marked paleness of the skin
2. a bluish or grayish discoloration (cyanosis) of the lips, nail tips of the finger & lobes of the ears.
3. the face is pinched & without expression.
4. there may be a staring of the eyes which often lose their characteristic luster.
5. the pupils may be dilated.
6. the pulse is weak & rapid & it is shallow.
7. the blood pressure is decreased & may be unobtainable.
8. there may be urinary retention & incontinence of feces.
9. an extreme thirst.

V Treatment:

1. Keep pt. lying down with head lower than body.
2. the lower extremities can be slightly elevated by placing the lower half of the body on pillows.
3. Pt. should be kept warm.
4. do not move Pt unnecessarily. PP-10-119

5. If bleeding is present it should be controlled
6. It such as epinephrine, ephedrine, caffeine
7. Oxygen may be necessary mixed \approx 4 to 10% Carbon dioxide
Blood transfusion or CPR
8. Relieve pain by splints
morphine

Shock = blood lost, an electrical stopping of the heart.

Burn = fluid = straw color
Pulse = is very fast - low blood output
Chest
Bones

Purpose of the heart = to pump blood to all parts of the body 60-100 \times per min.

Blood flow to arteries to capillaries to cell back to capillaries to veins.
Blood must flow from a certain force, it will be different for different tissues. When the heart is going fast the blood vessels are constricted.

First signs of shock

1. Sweating
2. Pale - from lack of oxygen.
3. Pulse is fast
4. Nausea & vomiting
5. weakness & dizziness
6. Body cold
7. Eyes dilated
Unconsciousness

120
PP-10-110

VI Shock

8. most of the blood is going to the heart & brain.
9. you might have a heart attack.

Cardiac output = How much blood put out

10. Pulmonary Edema

the heart can't pump out its load. & the heart become enlarge.

the liver is not getting enough blood to function.

11. Breathing more wheezed & swallow
Coughing up blood or pink frothy sputum

1. Start IK

2. Pain - weakness

3. Check carotid artery

VII Changes to take

1. B/P cuff

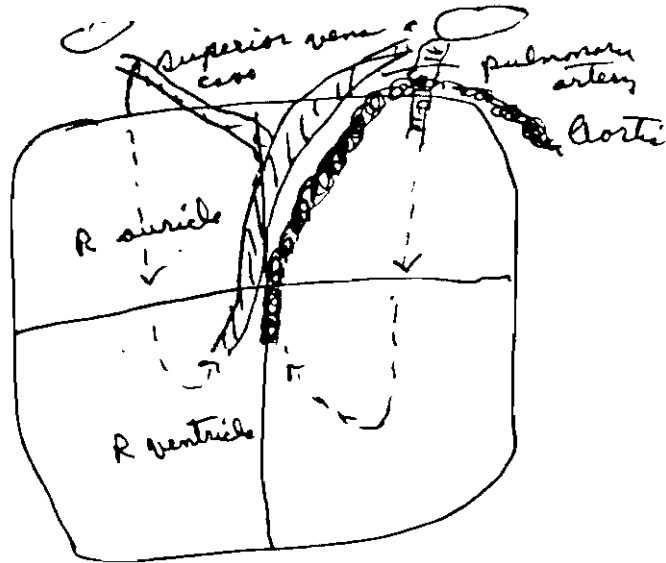
2. Blanket & pillow

3. Sleginoxin

4. Splint

5. Oxygen

PP-10-121



PA-10-122

Shock

Shock means a state of collapse of the cardiovascular system.

1. Heart & blood vessels

2. arteries

veins

small arterioles

venules

capillaries

6 quarts of blood in adults

The opening or closing of vessels is entirely automatic & is under the control of the sympathetic & parasympathetic

The heart serves to circulate the blood. If it pumps six quarts in a system that can just hold six quarts, every part of the system receives a regular supply of blood.

Shock is a condition in which this system fails to provide sufficient circulation to every part of the body.

3 causes of shock:

1. The heart can be damaged so that it fails to act properly as a pump.
2. Blood can be lost so that the volume of fluid in the container is insufficient.
3. The blood vessels of the container can dilate. Insufficient to fill up the system & provide efficient circulation.

there is insufficient blood flowing through the tissues of the body to provide food & oxygen.
the vital body functions slow down.

PP-10-123

1. Hemorrhagic shock = Blood ... Burns ... plasma
Signs & symptoms

1. Restlessness & anxiety - may precede all other signs
2. Pulse weak & rapid
3. Skin becomes cold & clammy
4. Sweating is profuse
5. The face is pale or cyanotic
6. Respiration may be shallow
7. Eyes become dull or hyperemic with dilated pupils
8. Pt has marked thirst
9. Pt. may feel nauseated or vomit
10. Blood pressure falls gradually
11. Pt. may faint

anaphylactic shock
occurs when an individual who has become sensitized to a substance by previous contact & it reacts violently to another dose or contact
severe form of allergic reaction. treatment immediate medication
epinephrine - might need to be repeated

metabolic shock

Fluid loss from vomiting, diarrhea or urination
or because of severe disturbance of body salt or acid-base balance by disease such as diabetes

anaphylactic shock =

1. Skin - there is a flushing, itching, or a burning sensation - especially of the face & upper chest. Hives, edema of the face, tongue may occur

Cyanosis is rapidly visible about the lips

2. Respiratory system - there is tightness or pain in the chest, an irritating cough, wheezing & difficulty in breathing

3. Circulation - there is a drop in blood pressure, a weak or imperceptible pulse, pallor, dizziness, faintness, even coma.

II Treatment Shock =

1. It is important to recognize the probable cause of shock for treatment is adjusted accordingly.
2. Do this first before anything else.
Secure & maintain a clear airway & give oxygen
3. Control all obvious bleeding by gentle firm compression.
4. Elevate the lower extremities
5. Splint fractures
6. Prevent the loss of body heat by putting blankets under & over the pt.
7. Head lower than body
8. Record pulse, blood pressure
9. Injection of epinephrine

IV therapy

I Infusion - which is used for administration of fluids other than blood.
these are blood-volume expanders, salt sol, sugar solution & electrolyte

II transfusion - administration of whole blood.

Equipment needed

1. Fluids such as glucose in distilled water, glucose in normal salt solution, normal salt solution, Leukal Ringer's solution

PP-10-125

Dextran & other synthetic blood-volume expanders
whole blood.

Tourniquets

arm support boards

IV sets

0

PP-10-126

Skin

M. scule = a change in color of the skin without elevation, depression, or visible scaling.

P. opule = is a fr

Acne

Warts

Nodule

Vesicles = these are collection of serous fluid in walls of varying thickness often indicative of a contact type exogenous eruption

PP-10-127

Herpes zoster - a group of vesicles on an erythematous inflamed base

Pustules

Impetigo

Furuncles - often deep, painful & difficult to heal - Between the toes

ulcer

PP-10-128

Skin:

1. Microorganisms =

all see foreign protein that come into the body that lives on the surface of the skin and produce an reaction. The blood produces an attack,

1 Redden skin area

2. Swelling - more fluids edema - lymph

3. Heat.

a defense system white blood cells: phagocytosis
anarobit surround & eat it up.

Antibodies work on the

1. Cause the foreign bodies to clump together

2. appositionization
oppositization

3. Lysis = to dissolve or liquify
dissolve

4.

All people have Staph & Strep bacteria on the skin at all times.

More

exillary

peri

1. oily skin

2. Warm

Germs increase in warm, wet weather

when apocrine glands combine & hair

PP-10-129

Where are the lymph nodes
axillary
Femoral
Chest

PP 10-130

6/4/78

Sores

I Bacterial Infections = use neosporin

Keep clean

A Boils

No sugar

1. the area will be hard
2. around the area will be red which will be infected
3. there might be a little opening

Carbuncles are found @ the back of the head

Treatment: Put hot compresses, one teaspoon of Epsom salt TSB to bring to head.

Never squeeze because you can cause infection through the blood stream

Clean & use antibacterial oint. neosporin

If there isn't a white head let Dr. Lyana

If really bad pt. should be put on antibiotics

B Impetigo

Skin disease by strept. infection. → arm pits

Small area usually on children face

Can spread from people to people

1. Clear fluid & form yellow crust
2. Blister; leave raw surface, spread - soak the crust off & apply neosporin

Leave open to air. Open the blister with a pin & apply neosporin thinly. If bad give antibiotics

3. A Kidney disease.


PP-10-131

Celluloma = Bites that people ^{scratch} ~~scratch~~ & sub.
 & form sores usually a crust
 on top & pus under. Remove
 the crust by soaking first clear
 out with soap or H₂O₂ & thin
 layer of neosporin & cover it with
 telfa
 open over night if nice & red, level with
 skin, no draining.

Folliculitis - open

II 2 kinds of sores people get in Guyana
 A 1. a little cut - within 24 hrs it will
 become big & red ring around a bubble.
 2. A perfect little
 3. Never put neosporin on it

treatment:

1. Keep it out of water
2. open them up. usually no pus just
clear fluid.
3. Wash with alcohol & put cotton & dressing
Bid:  no
4. the arm or leg is painful & usually
swells

Cellulitis = Inflammation of the dermis
 & subcutaneous cells why is it serious because
 it can go to the heart.
 Cause by
 Chemical
 Bites
 It is a focus
 system
 1. Swelling
 2. Redness
 3. Heat = fighting the infection
 PP 10-132

B. Tropical ulcer

1. Real red and inflamed
2. Hard white tissue which grows under the skin
3. Give antibiotics orally
4. It takes months to heal

II Athlete's foot - plant-like fungus infection - fungus like water

B. Athlete's feet or hyperhidrosis

1. Between the toes, white in color
 2. Too much water
 3. Dry well between toes & put powder
 4. Put the feet in the sun
- Children: hair, ring whitfield - athlete's

- ### C. Athlete's feet itched on top & sores & weeping ^{9 swells}
1. one tablespoon of boric acid & one qt. of water
 2. Soak for 20 mins. use neosporin or sutlren B12 then put
 3. Put 1/2 tsp of fadit cream for 2 or 3 days
 4. Cover with dressing thin gauze.

- ### D. Blisters very thick = the fungus is growing inside, open it & trim around the edge take off then dry put fadit (ibid) cover the first time you open. When open try putting bleach on.
- Cracking kind of athlete's use blood root pp. 10-133

Contact dermatitis

Pruritis - itching more during the night
of warm.

Cortisone - represses the attack on
the foreign protein - a dangerous
drug because it lowers the
entire body to fight off infection

PP-10-134

Skin Treatment

1. a boil = is an infection of a hair follicle
2. a carbuncle = is an infection of more than one hair follicle
Frequently pt. a carbuncle or by boils are
1. Diabetics - put on po. antibiotics. Boils & abs. found
mic. like on the face are particularly dangerous &
sugar. should be referred to a practitioner.
Boils in groin area & nose in which
no whitish surfaces need to be seen
by practitioner

Simple Treatment for small boil & no complications
is to apply hot salt water compress for 15 min.
tid. If it is open let drain, apply neosporin
or antibacterial ointment & dressing.

3. Impetigo = is a strep infection that is very contagious
contaminous. Its treatment is to soak the honey
color crusts in warm water until they can be
pulled off easily. Apply neosporin ointment, leave
open to air. It is instructed to keep hands off.
Stubborn cases are to be treated by po. antibiotics.
It could develop into glomerulonephritis.

4. Athletes foot = is a fungus it can be treated
w/ boric acid in warm water, or
vinegar. If there is a blister
open & sharp scissors. Footing or
desires are only to be used in
extreme cases. Cover w/ thin gauze

PP-10-135

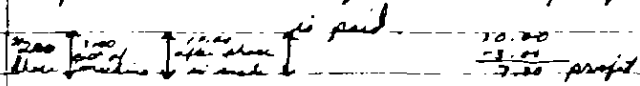
5. Burns = 1st degree - red, no pain apply of
boiling water apply kip
2nd degree. Cleanse & water & sterilize
in 1/2 water 1/2 vinegar, allow dressing
to dry on the pt. No kip or noxema
should be applied on open wound.
Debride may be applied later &
Linn's advice

6. Ecthyma = may come to a bite or scratch
there is a crust on top & pus underneath
Remove crust, & scrub, clean & alcohol
or H₂O₂ apply neosporin & iodo
pad. No sugar diet, don't
shave under arm or use deodorant

7. Pizzore - starts out as little cut, becomes
round bubbly sore & red ring around is
perfectly circular. Treatment is to keep low
dry, open top layer peels up &
pin or sterile tweezers, cut off dead
skin. Wash & alcohol, antibiotic cream,
Cover & thin gauze bib
If not treated red streak can develop
& true
Sulfa drugs should be ordered in
the beginning

PP 10-1310

1. Surplus value = Profit, the money left over after anything



2. monopoly = Bell Telephone

PP-10-137

II Virus - is organisms that can only survive on or
very small . in another living organism.

Measles -

Skin Condition = fever blisters, cold sores.

Increase by sunlight

Herpes zoster = ^{Chicken pox} shingles = an infection of the nerves

PP-10-138

admit I
monitor temp.

V.S q 1h x 3 then q 2h x 12 hr. then q 4h.

ASA q 2h x P.O q 4-6 hr. PRN for temp \uparrow 100°

Shower PRN for \uparrow temp 102°

Reg diet as tolerated

B.R. to commode

encourage fluid 100 cc/dt w/A

PP-10-139

19/7 Clear

Heat Exch

1. Body hot inside & send heat to the surface then out to atmosphere through the blood. There is alot of blood at the surface
2. Sweat the process of dry climate is evaporation

Evaporation turning liq into vapor - the faster it vaporizes the colder it will be
 Here it doesn't vaporize it stays on the skin

When the internal body is not receiving enough heat the blood will return inward.

The body dry heat up to 100° with evaporation

hair is insulator Humid 70° can change the body temp

Both direct exposure & indoor heat

Age - old - baby & poor health & people who are on salt diet
 Lost of salt from body.

dizziness	pale	uncom
nausea	paroxysmal	pulse is weak
vomiting	churning	Breath.

Give pt a lot of - short leg cramps

1 tsp salt per glass water

$\frac{1}{2}$ $\frac{1}{2}$ 15 min

tra pt dizziness

I It is not cooling the body by the atmosphere
 the sweat stays on the body.

II too much salt lost
 Drink alot of water

Heat cramps. because of a lack of salt

Give spots of H_2O pinch upper lips

Pressure

1 tsp to glass of water

$\frac{1}{2}$ glass of 15

Direct sun light the different if the people is sweating

PP-10-140

Heat shock - high temp


1. Very dry skin
shin - back
dryness & redness & wrinkling & irritation
shrink a lot of water. The lot of salt.
dryness
dryness of mouth & skin Pulse rapid
Temp 110
Remove all clothing - Place pt prone - Cold water on the surface part a fan to circulate air.

Skin Condition due to heat & sun light

1. pin head full of lymph full of fluid
papule a prickle & burning sensation - avoid sweating
Cool showers - spray loose cloth

Sun burn - a response to the skin to ultra violet rays

2. vinegar soaks

1. degree reduce the skin isn't broken
2. the skin blister, very painful - lost of fluid
swelling, blister & pain deeper
3. nerve damage - Not painful -
third degree: 

PP-10-141

Employment Experience (Continued)

Processing

The processing room and darkroom technic

Mixing solution

The developer

Basic constituents

Degree of development

Activity of the developer solution

The Fixer

Test for clearing time

Fixer chemicals

Silver recovery and prolongation to hypo bath

X-Ray Generating Apparatus

Transformer

Action of alternating current

Self-rectification

Valve-tube rectification (half & full-wave)

Low-voltage transformer for filament

Tracing the generator circuit

Simplified Mathematics Used in Radiography

Fraction

Equations

Ratio and Proportion

Transformation or change in voltage

Ohm's Law

Pathology and Injury, Body Tissue

Pathology and Injury

The patient problem

Positioning and measuring

Anatomy

Therapy and protection

Topographic anatomy

Principal regions of the body.

1. Head
2. Neck
3. Thorax
4. Chest
5. Abdomen
6. Extremities

Toward the head is superior end. Toward the feet is inferior end.

Anterior front

Posterior back

Lateral side - lateral chest wall, lateral side of arm

Medial surface of leg

Chin

Head injuries

1. Cranium - top of the core & eyes - containing the brain

occiput - posterior

temporal region

aspirated (breathed in) food or something that is obstructing the larynx, an emergency procedure that may save his life is to insert a 15-gauge hypodermic needle

Abdomen

1. Rt. upper quadrant - Rt. upper Quadrant

Rt. lower Quadrant

Lt. lower Quadrant

Pain or injury to a given quadrant usually will involve organs in that quadrant.

1. Rt. quadrant = liver, gallbladder & portion of the colon

Pain here usually without injury is usually caused by gallbladder disease

2. Lt. upper quadrant - stomach, spleen & transverse colon - the spleen is frequently injured.

Tenderness or pain here may be related to injury of the spleen

PP-10-143

Important Diagnostic Signs & their Interpretation

pulse
Respiration
Blood pressure
temperature
Skin color
pupils of the eyes
State of consciousness
ability to move
Reaction to pain

I pulse

Normal is 60 to 80 beats per sec.

80 to 100 in children

Changes in the rate & volume of the pulse are important

1. a rapid, weak pulse is usually the result of shock.
2. a bounding pulse is present in stages of fright & hypertension
3. the absence of a pulse means the heart has stopped
Cardiac arrest

II Respiration

Normal rate 12 per min.

1. Rapid shallow respiration are present in shock
2. Deep gasping labored breathing indicates airway obstruction or heart disease
3. In respiratory depression or arrest there will be little or no movement of the abdomen & chest & little airflow at the nose & mouth
4. Frothy blood at the nose & mouth accompanied by coughing following an injury, indicates injury

PP-10-145

to lung damage, possibly by fractured ribs
chest signs are also an indication of pulmonary edema
seen in acute cardiac failure or severe lung contusions

III Blood Pressure

is the pressure that the circulating blood exerts against
the walls of the arteries. It can fall markedly in states of shock.

1. Lowered blood pressure means that there is inefficient pressure
in the arterial system to pump blood to all the organs of the body.
2. If blood pressure is abnormally high, damage to vessels in
the arterial circuit may occur.

Systolic pressure is the level present during contraction of
the heart

Diastolic pressure is the pressure during relaxation of
the heart.

Normal for males is 100 plus the age of the pt.
65-80 mm

IV Temperature -

Normal 98.6°

V Skin color

Depends on the presence of circulating blood in subcutaneous
blood vessels.

1. Red color is present @ high blood pressure certain stage of carbon
monoxide poisoning & heat stroke
2. Pale, white, ashen skin is indicative of insufficient circulation &
is seen in shock & heart attack.
3. A bluish color. (cyanosis) results from poor oxygenation
of the circulating blood. as in heart failure
anemia, obstruction & some poisonings
4. Yellow (jaundice) seen in liver disease

PP-10-146

VI Pupil of the Eye

Normal - regular in outline & of the same size

1. Changes & variation in size of one or both pupils are important signs in emergency care.
2. A constricted (smaller) pupil may be present in drug addiction or disease that affect the central nervous system
3. A dilated (enlarged) pupil indicates a relaxed or unconscious state

Variation in size of the pupil is seen in head injuries & strokes -

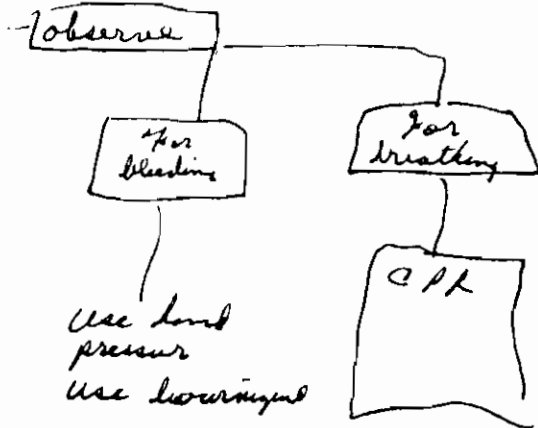
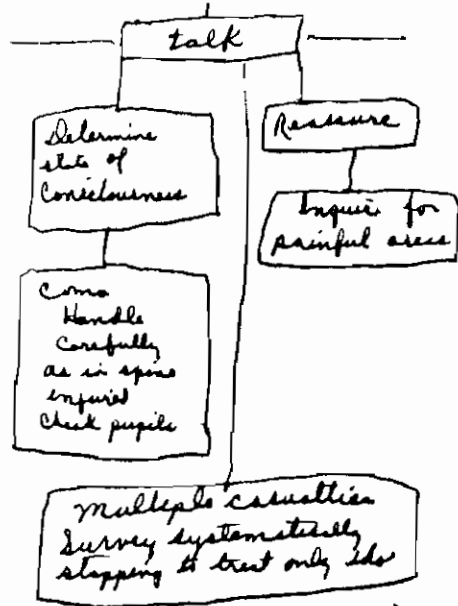
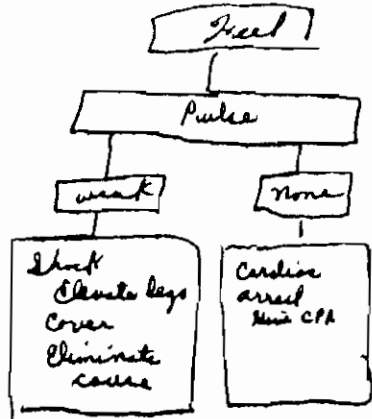
Failure of the pupil to react to light may indicate poisoning with drugs, alcohol, or solvents. In death, the pupils are dilated & fail to respond to light

VII State of Consciousness

1. alert
oriented
Response to vocal or physical stimuli

PP-10-147

Survey



PP-10-148

Chest Pain

Chest pain could be from many different sources.
All chest pain should be taken seriously.

1. ask where is the pain? Deficit involve the sub-sternum region
2. Describe as a clinical find. They should be able to describe it.
 1. the quality
 2. where does it radiate to? to lt. arm. Teeth
 3. ask when they first had the first episode? what happen?
 4. describe the most recent attack, brought on by activity?
 5. ask if relieve by rest.
 6. take PVC if 6 or more in one min than serious
3. Nitro - relieved chest pain. it can relieve gastro intestinal pain
4. look vitals signs
5. when a person is having heart pain the B/P will go up & the rate increase. B/P $\leq \frac{100}{70}$ indicates how the heart is working
6. Fluid in lungs - Rales - when inhaling - rales sounds
Edema - legs

EKG 10 frequent. - as many in a period
where they come from
the same place KKG - SAD & VU
How close they come to T-wave. T. P-Q & R wave

PP-10-149

Head injury

1. Unconscious
there might be bleeding in the brain
Pressure on the brain —
the body won't function
Children can go into shock much easily.
2. Check pupils - check frequently.
 1. Failure of pupil to respond to light = testing a reflex arch
 2. Unequal pupils = one larger than other, one doesn't react to light. O hold in skull in skull to release the pressure
3. Breathing
Breathing is deep & a period of not breathing
when it stop entirely you know the P/p increased.
4. What happens to P/p? It goes up & the heart rate goes down
that means increase in cranial pressure
5. P/p increases & pulse decreases
6. Temp. Get a base line Temp. If elevation infection
7. Watch vomiting - projectile because the vomiting center is in the brain stem.
8. Look for weakness.
If weakness is on the left side, damage is on the Rt side
9. Put down to what patient responds to.
Watch what she moves.
note how rapid symptoms progress.

PP-10-150

I Bacteria Infection

Fungal Infections

Carbuncle - multi-boil - 3 or 4 openings

Bacteria - Boil = infection of hair of
organism - is stuff = Swelling - sometimes a head
on it. Hot compresses Tib - & Epsom salt.
Heating pad. Swollen & red around it.

Tell - Supervisor

Take Temp.

Check - groin or arm pits

Never squeeze. Pull out. Boil on face

Tell J. Parks, or Dr. Schutt.

After draining there will be a hole
left. Neosporin. Stryking

Empetigo = ^{yellowish} Crust patches on face & hair.
Staph & Strept. organism - Can cause
Kidney st.

74: Hot moist compress & soak. & take off
Clean & dry off & apply very thin layer
Neosporin.

Actinom

1. Cover = gauze
- 2 soap & H₂O
- 3 Neosporin

PP-10-151

Wounds - PAIL

P → Puncture

Treatment

Wash w/ H_2O_2

1. Betadine +

chem w/ H_2O_2

Use tetanus or

antibiotics

1. is produced by an object piercing skin layers, creating a sm. hole.

2. External bleeding

3. Internal damage may have resulted to the organs causing external bleeding

4. The hazard of infection is increased because the flushing action of external bleeding is limited

5. Tetanus may develop

6. Not a lot of blood lost. a disadvantage is bacteria is taken out. difficult to clean out.

A. Abrasion

1. The outer layers of the skin are damaged or scraped against a hard surface

2. Bleeding is limited

3. Danger of contamination & infection exists

4. Infection is possible because of dirt

I Incisions

1. Cut w/ a sharp object =

2. Bleeding may be rapid & heavy

3. Deep cuts may damage muscle, tendon & nerves

Lacerations

1. a jagged, irregular, or blunt breaking or tearing of the soft tissue. a deep cut - not clean

2. Bleeding may be rapid & extensive.

Destruction of tissue is greater in a laceration wound than in a cut.

Avalanches

Results when tissue is forcibly separated or torn from the victim's body

pp-10-152

things to do.

I Stop the bleeding

By applying direct pressure by hand over a dressing
in case of emergency, bare hand or finger.
never remove bandage

II Elevation = the injured part of the body raised
above the level of the victim's heart.

III Pressure points.

as a rule do not use a pressure point in conjunction
with direct pressure & elevation any longer than necessary to
stop the bleeding. Pressure on the artery = In addition
the pressure point technique = main artery
It also stops circulation within the limb

Brachial artery - arm - fingers

Femoral - leg - hand

Carotid arteries - neck + head

IV Tourniquet - control bleeding from chest wall & amputations

Should be used only for a severe - life threatening
hemorrhage that cannot be controlled by other means

1. a Tourniquet should be at least 2 inches wide
2. Place tourniquet just above the wound
3. wrap the T band tightly around the limb twice
& tie a half knot. two knots on top of stick
4. twist the stick to tighten the T until
bleeding stops.

5. Secure the stick in place & the large end tied down

treatment: apply cool swab moist towels

V Infection

symptoms

swelling

redness

a sensation of heat

throbbing pain

tenderness

fever

pus

swollen lymph

or kernels in the
groin armpit or neck

red streaks leading

from the wound

PP 10-153

1. Sulftrin - Both Bacteria & Fungal
Sulfur drug - use vaginally & topically

- Warning: History
1. Do not use when there is a Kidney disease
 2. If local irritation develop stop using. itch or red.
 3. Not a broad spec.

2. phenargan - antihistamin ^{now or using}

- Use itching
if use external
& drug for internal
1. do not apply to blisters - we-
 2. If burning sensation discontinue use
 3. Procartin avoid long use

Warning 4. 1

3. oint is a medication in vaseline - oil soluble ^{not plastic}
Cream is a medication cold cream. more exorbable

4. Neosprein oint, cream

1. Discontinue if sensitive because ^{never put in ear if ear drum is perforated} of a ototoxicity or nerve damage because of neomycin
2. Use on ^{open} ulceration - burns - General bacteria infection used topically & oral antibiotics
Dron - & Dron +
Not use on ulcer

2 anti fungal & anti bacteria
Veroform - oint & cream - is a colonic
Betadine
prescription 1. may cause skin sensitivity

2. May stain fabric or hair

Tenuac - anti fungal -
mild irritation

Mycostatin - anti fungal - yeast infection
vaginal - Cedestin for yeast

Whitfield oint or sol - antifungal ^{Keratolytic}
1. warning it may be very drying effects ^{if dry the edge & top of}

Que Kwell = is poison -
Leave for 4 min

Scamb pediculicide

1. Wash contact & eye - flush & H₂O
2. Skin eruption
3. Chemical poisoning

HC - cream & oint

1. Not to be use in viral infection
Not use in great quantity in fungal infection
not in great amt. because it is absorbed
into the blood stream.

PP-10-155

itching
burning
or skin
irritation

1. Irritation

2. Erythema

of gray more symptoms of
often irritate

if the ear is perforated
don't use.
never use it a irritating place
never use on pressure area

Zylocaine sol.
works on mucous membrane

Warning use on ants as possible - central nervous system reaction.

Polysporin - t.c
Q. Demol - C - Vioform - fungal - will reduce swelling +

Tridexilon H.C. Reduce the symptoms
↓

Valium - H.C

Cortisporin - Neosporin
fungal infection + cortisol a long term
any kind eye should be checked regular

Neosporin G - purple antibiotic

Nitral oint rub

Praxter

Sulfamylon - sulfor + acid - drying oint
anti bacteria for barn therapy.

Anaesthetic bomb -

warning don't rub - pat on because of burning - a deep blood vessel dilation... pat in

Vic vapor rub - never put in nose or in throat

Bacterine - Bacteria - not on open wound

Etymal - Black sol. - antibacteric
Boil-
drowning

Don't use on face because it scars the tissue

PP-10-156

Kenolog - HC

Hyteine - HC

Mycotog - HC

} use for diaper rash - bacteria infection

Polysporin - same as neosporin

Tenexin Verucolor - shampoos

sternef - very mild anti-fungal

PP-10-157

ARE YOU CONCERNED ABOUT: CON'T:

Child seems unhappy: _____
Difficult child: _____
Difficulty with brothers or sisters: _____
Child's behavior at home or at school: _____
Other: _____

How would you rate your ability to handle stress, fear, anger?
good _____ fair _____ poor _____

Thank you for your cooperation in filling out this form. This will be a permanent part of your child's record, and will help us give your child better care.

CPR

Normal pulse 60-80
Resp 12-6

Check pulse \checkmark , carotid & femoral pulse

- A activity
- B Breathing
- C circulation-compression

5 compression to 1 breath

P_{CO₂} at a level of 90-100%

1. Take all vitals signs
2. Respiration
3. pulse rate
4. CO₂ retention
5. Hyperventilation

2/17/78
40 independence countries
sent representatives to the
Kartum Conference in
Sudan

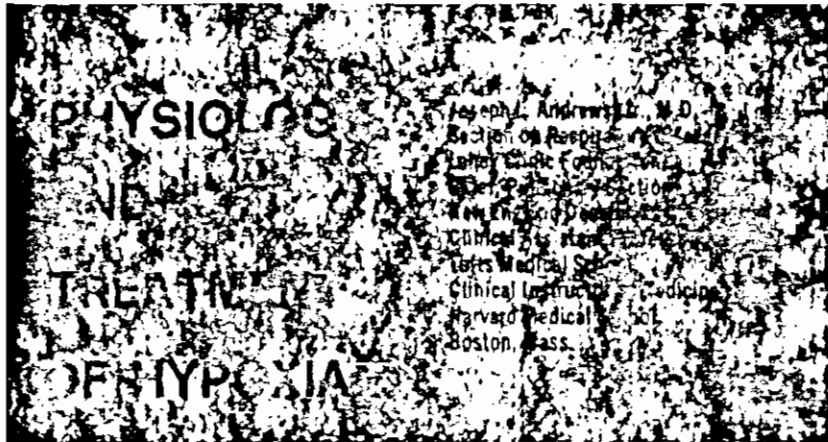
Intubation - placing a tube into the oral. To check
out to
Watch for cyanosis only for 2 min.

PP-10-158

Get to suction through the nose. Always give
10-12 breath
Ambu bag best to ventilate
anachim =

PP-10-159

Hypoxia



Hypoxia is an often serious condition that responds most specifically to precisely measured doses of oxygen.

The basic simplicity of this statement belies the many difficulties involved in assessing hypoxia and in selecting the best means of therapy. In reality, clinical situations involving inadequate oxygenation are often complex, requiring treatment of many pulmonary and circulatory derangements.

Because of widespread application of newer techniques, such as cardiac catheterization and blood-gas measurements, there has been in recent years an exciting growth in basic knowledge of cardiopulmonary physiology. Technology has also spawned new methods of oxygen therapy such as the Venturi mask, positive end-expiratory pressure (PEEP), and long-term home therapy from a liquid oxygen "walker" system. However, this proliferation of new knowledge, techniques, and equipment is often confusing to the clinician not intimately involved with respiratory care. This article provides a basic understanding of the physiologic causes of hypoxia, and on page 10 also reviews some of the newer, more useful techniques for administering oxygen.

- Hypoxia is the inadequate delivery of oxygen to satisfy the metabolic requirements of the organs and tissues of the body.
- Hypoxemia is a reduced level of oxygen in the blood.

The goal of therapy is to provide enough oxygen for metabolic function, thereby correcting both hypoxemia and hypoxia.

A comprehensive approach to assessing the severity of hypoxia, to determining its causes, and to treating it optimally is outlined here in Table 1.

TABLE 1

Hypoxia can occur in many clinical settings, in both medical and surgical patients. Although the mildly hypoxic patient may

TABLE 1
PRINCIPLES OF DIAGNOSIS AND TREATMENT OF HYPOXIA

- Detect hypoxia early: Symptoms and signs
- Diagnose cause(s)
- Assess degree of hypoxia
 - A. Clinical: Symptoms, examination
 - B. Measure: PaO₂, PaCO₂, pH
- Treat precipitating factors of respiratory failure
- Select best mode of O₂ therapy
- Monitor carefully and record data on flow sheets
 - A. Patient: Mental state, BP, P
 - B. Respiration: Rate, depth, rhythm
 - C. PaO₂, PaCO₂, pH
- Adjust O₂ therapy if necessary
 - Goal: Normal PaO₂ = 70 to 100 mm Hg, if possible; otherwise, PaO₂ > 50 mm Hg < 100 mm Hg
- Avoid excess O₂
 - A. Hypoventilation and hypercapnia
 - B. O₂ toxicity

PP-10-160

5/6 The head of ~~State~~ ^{China} visiting Thailand and China will be visiting Thailand. They are forming up an alliance.

Prop 13 passed in SF. The successor to the Housing Commission was found guilty of fraudulent use of funds & dismissed by the mayor. The Chicago police are cooperating with the secret police of Iran to harass Iranian student in Chicago who have protested against the terror of the Shah. The police raided their headquarters. The police had paid a youth \$500 to throw a cherry bomb & shouted "up in the Shah"

Peter Riccio are protesting OS Naval base which leaves 70% of the land unused. They were not paid for the land.

David Luig & Ronald Kempf were framed by the Government in a new Rosenberg-type case. They were found guilty of passing "secret" documents to the South Vietnamese. The case gave the Government or Pres. power to tap phones & Cleburg says it's too late for the US, who is closer to nuclear war than ever before.

He said SB 1437 makes it illegal to expose the Government's double dealing. The plans for dropping the bombs are already made.

Nixon's memoirs revealed his plan to drop the bomb on Viet Nam in 1969. He also blamed Kissinger for the massacre in Chile. He said the US is responsible for the deaths of 1/2 million Indonesians in the coup supported by the CIA.

PP-10-161

have no symptoms, the astute clinician can suspect hypoxia by eliciting the symptoms and signs shown in Table 2.

Arterial oxygen tension (PaO_2) that is low—below a level of 60 to 70 mm Hg—stimulates the chemoreceptors in the carotid and aortic bodies, which signal the medullary respiratory center to increase ventilation.¹ Volume of compensatory hyperventilation, that is, the amount of increase in the minute alveolar ventilation, varies with the degree of hypoxemia. If there is any depression of the central nervous system, such as from barbiturate overdosage, or any limitation of thoracic motion, or mechanical impairment of the lungs, such as with interstitial fibrosis, full respiratory compensation for hypoxemia will not take place.

Increased rate and depth of breathing are often experienced by the patient as dyspnea, the increased subjective awareness of breathing caused by heightened sensory inflow from chest wall muscle spindles.² Hypoxemia can exist without the patient being dyspneic, since he may have compensatory hyperventilation without subjective awareness of it. On the other hand, dyspnea can be the result of causes other than hypoxemia, e.g., hypercapnia, increased work of breathing caused by thoracic impairment, or decreased lung compliance, such as in severe atelectasis.

Sympathetic stimulation in response to acute hypoxemia, mediated by the chemoreceptors acting on the vasomotor centers, causes an increased cardiac output, primarily by an increased heart rate.^{1,3} Selective peripheral vasoconstriction is also present, with resultant increased peripheral resistance. This, coupled with the augmented cardiac output, often results in systemic hypertension when sympathetic responsiveness is intact. Thus, tachycardia and mild hypertension are often early signs of hypoxia. Severe, chronic hypoxemia, however, is frequently accompanied by severe metabolic acidosis if cardiac output falls. This may result in sympathetic depletion with cardiac failure, systemic hypotension, bradycardia, arrhythmias, and finally cardiac arrest.

Although hypoxia causes vasodilatation of coronary and cerebral arteries, it also causes

TABLE 2
DIAGNOSIS OF HYPOXIA

Symptoms	Signs
Dyspnea	Tachypnea
Restlessness	Tachycardia
Impaired judgment	Arrhythmias
Personality change	Hypertension (hypotension, late)
Headache	Central cyanosis
Impaired motor function	Late (more than 5 gm of reduced hemoglobin/100 ml of blood)
Confusion	
Delirium	
Coma	Coma

pulmonary arteriolar vasoconstriction and pulmonary artery hypertension.⁴

Clinically appreciated cyanosis is a late sign of hypoxemia.⁵ Cyanosis is not present unless more than 5 gm of reduced hemoglobin/100 ml of capillary blood is present. As long as normal cardiac output is maintained, cyanosis is detected only at a very low PaO_2 , near 40 mm Hg. In an individual with high cardiac output or anemia, the PaO_2 must be even lower for detectable cyanosis to occur.

The human brain, which accounts for about 20 percent of the total oxygen consumption (although it comprises only about two percent of body weight), is very sensitive to hypoxia. The degree of cerebral symptoms and signs induced by hypoxemia depends on the extent of compensatory cerebral vasodilatation resulting from local tissue hypoxia (and to any coexistent hypercapnia). It is also related to factors which influence cerebral oxidative metabolism, on the duration and extent of hypoxia, and on the effectiveness of the cardiovascular compensation to the hypoxemia.

A small degree of hypoxemia is associated with restlessness, personality change, and impaired judgment. Moderately severe hypoxemia causes impaired motor function and confusion. Severe hypoxemia, that is, PaO_2 between 20 and 30 mm Hg, often causes delirium and coma.⁴

PHYSIOLOGY OF OXYGEN CONSUMPTION AND TRANSPORT

Under resting basal conditions, the consumption of oxygen in man is constant—110

PP-10-162

Daniel Ellsberg

was a Defense Analyst for the US Gov. He was working on the Pentagon Papers which showed that the government was lying about the Viet Nam War everyday. He thought at first that it was necessary for the defense of the country. He expose the Pentagon Papers. He first took them to Bobby Kennedy, who turned them over to Sen. Fulbright who promised an investigation that never came. The New York Times finally published them. He didn't expect the violent reaction he got. He received 15 felony indictments. & faced 115 years in jail. He was finally released when it was exposed that Nixon had violated his rights by stealing his files from his psychiatrist. Since then he's gone on to become a leading opponent of nuclear war. Recently he blocked a train carrying nuclear material from the Rocky Mts Atom Bomb Plant. He says that the government is trying to hide the effect of low level radiation. He predicts an epidemic of radiation sickness suggesting that the Legionnaire illness may have been the beginning. He says that sloppy X-rays will also be causing concern.

PP-10-163

masks are too restrictive, and they get a suffocating feeling.

Open Face Tent

An open face tent (space mask) avoids the complication of CO₂ entrapment and can provide moderate amounts (30 to 55 percent) of well-humidified oxygen.

Nasopharyngeal Catheter

A nasopharyngeal catheter is a direct way to supply a low percentage of oxygen, but the oxygen is delivered at an unknown concentration. The catheter is inserted through the nose into the pharynx below the soft palate. The procedure is often uncomfortable for the patient, and the tube can inadvertently slip into the esophagus, causing acute gastric dilation, vomiting, and aspiration. For these reasons, this method of oxygen delivery has not been so popular in recent years.

Venturi Mask

A recent development with widespread acceptance is the Venturi mask (Venti mask), which uses the Venturi principle to supply precise concentrations of oxygen. A mask can be selected that will deliver 24, 28, 35, or 40 percent oxygen. The Venturi mask is especially useful in patients with chronic obstructive lung disease, in that it can increase blood oxygen levels, with resultant minimal increases in CO₂ tension.²²

In patients with chronic obstructive lung disease, the degree of rise of PaO₂ on the Venturi mask is approximately proportional to the starting PaO₂ before therapy.²³ Serious instances of CO₂ retention are usually not encountered in this type of patient if oxygen concentrations of 40 percent or less are used.

Oxygen Tent

The oxygen tent, although comfortable for the patient, is used less frequently now because of the large amounts of oxygen that are required to keep the oxygen concentration above 50 percent. In addition, there are difficulties in preventing leakage of oxygen when the patient must be turned or otherwise treated by nursing personnel.

Intermittent Positive Pressure Breathing (IPPB) Devices

One hundred percent oxygen can be delivered by intermittent positive pressure breath-

ing (IPPB) devices. Delivery of a lower percentage of oxygen by this machine's air mix device is not precise. The air mix device has been labeled 40 percent oxygen; however, concentrations as high as 90 percent are delivered to patients with stiff or obstructed lungs. Failure to recognize the inaccuracy of the air mix device has resulted in pulmonary oxygen toxicity.

Ventilation

Should a ventilator be used to treat hypoxemia? If the patient with hypoxemia can be treated adequately with oxygen therapy and other specific therapies in order to maintain the PaO₂ at near normal levels, artificial ventilation is not necessary. However, artificial ventilation is mandatory if the PaO₂ falls below acceptable levels despite maximal comprehensive treatment, or if the CO₂ tension rises to unacceptable levels, or both, indicating inadequate alveolar ventilation.²⁴ Artificial ventilation is also mandatory if the patient becomes exhausted from his respiratory efforts.

In a trial of temporary assisted ventilation, endotracheal intubation is performed, and a respirator is employed. Tracheostomy is performed only if the patient requires artificial ventilation for longer than two to five days.

Regulation of the percent and pressures of delivered air and oxygen depends on the type of ventilator used. In a pressure-limited ventilator driven by 100 percent oxygen with the air mix device in operation, the percentage of inspired oxygen varies inversely with the flow rate, and directly with inspiratory pressure.²⁴ Thus, with stiffer lungs (less compliant), the downstream pressure against the inspiratory flow rises, the percent of air added to the oxygen flow falls (less Venturi effect), and the percentage of inspired oxygen rises to potentially dangerous levels (above 60 percent). The percent of oxygen delivered is higher (61 to 93 percent) if the main ventilator gas source is compressed oxygen. Oxygen delivery is lower (30 to 55 percent) if compressed air is used as the main source with a flow of oxygen added to the nebulizer line. The inspired gas mixture should always be measured with an oximeter for accuracy.

With a volume-limited ventilator (piston-

PP-10-164

11/7/78 ^{News}
Car bombing Sydney on 2A. 6 killed

Bambie.

PM Gurnham said that it is indeed evident that your
life in England that you life isn't a bed a roses. Tell it
like it is to the world. His letter read to a 1000 people at
Tavern Hall in London. Fascism & racism.
Margaret Thatcher has promised the abolition that she will
expel all people of color. English newspaper attack on Gurnham
In England power shortage they said that Gurnham is
the old people suffer abundant food.

A Hungarian given a plaque

93 people Oct 1976

Killed in plane

the Gov of PWC

Wade in field - cut plants. the mechanic use new parts when they
Holiday the birthday Nelson Mandela - still in the Union of South Africa
1964 in jail (she never had a review in the court
200 teachers in Dispute - Mary Rogers -

PP-10-165

class 4/4/28

Insecticides

A Chloridone = minimum death dosage
(brown-red color) for man 150 lbs. 40%

Symptoms - CNS stimulant

- | | |
|--------------|---------------------------|
| 1. Tremor | Light headache |
| 2. vertebra | Shortness of breath |
| 3. dizziness | unco-ordination of muscle |
| 4. Rash | Kidney damage |

- II
1. mouth
 2. skin contamination

The treatment: remove from stomach by

1. Gastric lavage follow by a lot of
epsom salt.

never use fats or oils or milk because
they increase the rate of absorption

2. if skin contamination, wash immediately
shower for 15 min

Wash clothing + attention to hair

if muscular twitching use oxygen

B. Aldrin

1. Reptiles
2. excited
3. liver damage
4. respiratory

PP-10-166

I Indane:

1. Chloridene
2. Aldorin

Reddish Brown in color

II Early symptoms

1. weakness
2. chest tightness
3. difficulty breathing
4. nausea
5. light headedness
6. disorientation
7. eyes slow to respond to light

III Late symptoms

1. hyperexcitability
2. restlessness
3. Convulsion

IV Treatment:

1. Skin contact: Prompt washing of skin & soap & H₂O with special attention to hair & fingernails
2. Poking orally
 1. Nasal NG tube, suction set up & O₂
 2. Sq. amt. of epsom salt

Don't give milk sol., oil or fat

PP-10-167

Indane derivatives

Chloridane

Heptachlor

Aldrin

? Readily absorbed from skin
lungs - GI tract

Symptoms of poisoning

Award from resp - exposure 3x ↑ oral

absorption rates 10x ↑ skin absorption

Contaminated clothing to be washed well

can get symptoms from cont. clothes

Symptoms - weakness - unsteady - blurred vision

chest tightness - vomiting - abd cramps

diarrhea - excessive salivation sweating profuse

tremor of extremities - difficulty of breathing

Names we use - Baculin-40 - malathion

Kolithion - Othio 33

Disagreeable garlicky odor - often associated - malathion - pinpoint & non-reactive pupils observed

Cyanosis - muscular fibrillation - sm. local

contraction of muscles under skin

Hypoglycemia - 8 m.o. child

after lethal doses - symptoms come on rapidly & death usually within 24 hr.

Antidote treatments atropine doses of 1-2

mg until hr. intervals - some show O_2 gain

1st sign of pulmonary edema pp-10-168

Ches 11-14

Insecticides

1. Symptoms

2. Absorbed from skin, lungs & gut

3. main type of insecticides, changes from one to the other.

Repeatability 3x as great as from lung exposure 10x faster if just skin contact. Contaminating clothing can produce symptoms. You live to wish.

Clinical

1. weakness

2. unsteadiness

3. blurred vision

Pupillary pupil

4. Const

Follow by vomiting

abdominal cramps

diarrhea

facemask

difficulty in breathing

Basubin 40

Malathion

Halithion

Anthio 33

a disagreeable odor is usually associated

Cyanosis may appear due to oxygen

conservation

muscle contraction under the skin

severe hypoglycemia - death occurs within 24 hr.

antidotes atropine

atropine - atropine 1-2 mg. at hourly intervals until the pupil are dilated. In severe cases it may 20 mg.

oxygen under slight pressure - these drugs affect the ^{chloroph} artificial respiration may be necessary

Some PDS 1 qt. dicum on PP-10-169

mild case

headache
blurred vision

→ dose 2,000 mg/day pentoxifylline
under observation for 24 hrs.

PP-10-170

The Heart

I. There should be 3 attendants in the office

1. Respiator
2. Suction machine
3. EKG machine

they may have pulmonary edema. Sympathetic system a great of energy; or block when you become excited the heart beats to fast & you don't get a good pumping action.

2. arteriosclerosis = fat in arteries

3. arteriosclerosis = Plaque filled arteries

4. Endocarditis = inflammation inside the heart

Dangerous pulse 100 or above use a rectal thermometer to help slow heart rate.

II. Chest Pain

1. what could bring it on? Angina, myocardial infarction
Pulmonary edema. Pneumonia. Hemoptysis

2. Ask the location of the pain - is there chest tenderness?
Does pain radiate? if so where? (when did pain begin?
Did it come on fast or slow. (5) Did the pain awaken you
in your sleep?

(6) Take all vitals RR, pulse, weight & both coratid

(7) Examine both femoral pulses.

(8) Examine both legs for vein disease

(9) Check for signs of vascular disease, which are. Skin looking
dry & clammy puffed.

(10) Check for nail color. Check for a cough

(11) Color of sputum; yellow-green or pink

Foamy sputum could possibly have a pneumothorax which is a
collapsed lung generally caused from a hole in the chest
wall from a pleural trauma

PP-10-121

4. What do you need if you checking a pt
with chest pain:

- | | | |
|------------------|--------------|----------------------|
| 1. Stethoscope | 4. EKG | 7. Nitro-glycerin |
| 2. Oxygen | 5. Edo-br | 8. Physostig |
| 3. pressure cuff | 6 IV. Set up | 9. endotracheal tube |

PP-10-172

Heart

1. there should be 3 attendants in the office

1. Respiator 3. EKG

2. Suction machine

1. X-rays

2. Chloroquin - Malaria - Who is coming in

3. the amt of milk a p mother should drink
a least meter

PP-10-173

News

Rt atrium Lt. atrium
Rt ventricle Lt. Ventricle

main flow - How do capitalists restrain managers from acting in their interest rather than interests of capitalism

1. Rampant automation
2. Inflation
3. imperialist wars
4. labor interest

The Impact of recession

on women } cause unemployment
on blacks }

Class struggle rather than the forces of production
State not neutral - it reflects structure and
political strategy - part of capitalist society
anti-capitalist movement UKIP
demand employment, reducing inflation
qualitative transformation of the system?
the strategy does not work
relieve or spontaneity? building broadest

UKIP = Union Radical Political Committee
ignores the concept of a classless society
America by Design
Challenges a myth of capitalism

Bell Telephone - technology
produce more monopoly pp 10-174

Free countries of Africa

Mozambique

Gambia

Angola

Trinidad

Ethiopia

Yemen

Zimbabwe

Namibia

~~PP-10-175~~
PP-10-175

3. Blackroot - for ringworm.

Preparation (make strong tea, and apply externally)

Usage: as much as necessary, scrub on.
Use fluid extract.

4. Papaya - Constipation, ulcers & open sores.
Constip. Procedure. Slice the fruit. Use it like green apple. Also cooked is good. Varies in amt. according to patient.

Usage varies

PP-10-176

ulcers - use the skin. Nurse knows
the procedure.

Indigestion & seeds. Crush seeds well. Given like
a powder to water.

5 Pumpkin seeds - for urinary problems, prostate
problems. 3 seeds for a few days.
If no change give 5 seeds. Good
source of protein also.

6. Banana juice - Drib on & tip for sores.
Nurse's discretion according
to size of wound.

PP-10-177
MAR

K

Procedure = Herb Preparation Dosage

1. Bon Bon Banna

Constipation Procedure - Use for one day.

If no movement, then continue for three days.

Dosage: 1/2 cup for at least one day

(

pp-10-178

2. Irish Vine = Conoclinium

athlete's foot, ringworm, baile

Procedure: Wash area in laundry soap. Use
as first as possible. Rinse feet
and dry well between toes.
If available, apply fresh mill
of the vine + crushed leaves for
a bad case, apply 3 times daily.

PP-10-179

7.4.74 class

cut

1. Define CPR: Cardio → heart Pulmonary → lungs
Resuscitation, revival of life
 2. Purpose of CPR → keeping life or breathing
 3. Clinical death → 0 to 4 min. not breathing
 4. Biological death = after 4 to 6 min, brain damage
 5. What is oxygen = is a drug
 6. Physical properties colourless, odourless & combustible
Oxygen tanks
- 2 Types - sm green & lg white
small 5 green Expt ① 2000
large 4 white & black H expt ② 2400

(2 You have to have a
must
regulator purpose 1. to know how much
pressure

3 to stop down the

4 the part that click up is a spark adapter
turn the centre on counter clockwise to
turn off clockwise

Quartz to determine the flow

pound per sq inch
PSI full C₂ = 2000

Flow meter use it let you know how much
oxygen is delivered.

liters per min. 1-15 liters

on dial

off counter clockwise

pp 10-180

Humidifier -
Preventing a humidity deficit

mask

Normal flow rates per min.
To get 40% - 6 to 8 L.
Depends on Pt. condition

Cyanosis - Blue in color

diaphoretic

S.O.B

Shortness of breath

dyspnea

DOE

dyspnea of exertion
up to 20 sites

O₂

regulator - & gauge PSI

flow meter

on ^{thread} adaptor to attach to the humidifier

F .28

H 3.14

duration of time oxygen tank
will last

$\frac{PSI \times F}{flow rate} = \text{time in minutes}$

2400

$2000 \times .28$

6 L per min. delivering to Pt.

2000
 .28

16000
4000

16000

9.3
6 | 56.000
 54
 --
 20
 00
 --
 00

PP-10-181

1. when a foreign body is obstructing the air passage & cannot be removed w/ fingers.

A- Heimer's sign blow over spine between shoulder blades

2. External cardiac compression for a pulseless victim is never too highlow to perform

3. the % of deaths from a heart attack before the victim reaches the hosp. is 50-60

4. In mouth-to-mouth resuscitation, tilting the head back is important because it

A- It extends the neck & lifts the tongue away from the back of the throat

5. Which of the following may be a pt. description of a heart attack

1. It was as if someone was standing on my chest

2. Severe aching in my jaw

3. Very great chest pain - the worst pain in my life

4. a mild episode of indigestion

5. My chest felt like it was on fire

6. when performing external cardiac compression on an infant

1. the compression rate should be approximately 100 per min.

2. Place two fingers over the middle of the sternum

3. Interpose one ventilation between every 5th & 6th compression

PP-10-182

2. Hearing or feeling ribs fracture or costochondri during external compression.
Indicate hand location should be reassessed
8. Blowing a small amt. of foreign matter into the lungs is less dangerous than delaying oxygenation time
9. If the initial airway & breathing efforts fail to result in ventilation of a victim, consider the following:
 1. Reposition the head & neck & try again.
 2. Explore the throat for foreign objects & try again.
 3. Roll victim & deliver a sharp blow between ^{acromioclavicular} shoulder, as an emergency resuscitation if qualified.
10. Which is certain when the unconscious victim's chest is seen to move up & down.
He is making breath attempts but the air may not be getting into his lungs.
11. Which of the following is generally not considered to be a warning sign of a heart attack. Pain in leg, warning, squeezing feeling in the chest, numbness or aching in the arm, aching pain, Nausea, sweating & shortness of breath.

PP-10-183

- (
12. The most common mistake made in performing mouth-to-mouth breathing is that the operator does not hyper-extend the pt's head adequately
true
13. When switching place & partner in CPR the rescuer at head moves first
14. Which of these persons is likely to be a victim of airway obstruction?
1. a stroke victim
 2. a person suffering drug intoxication
 3. a person & something in his windpipe
- (
15. How far down should you depress the sternum for external cardiac compression in an adult
 $1\frac{1}{2}$ - 2 inches
16. What should you do first for the unconscious victim of illness or accident? open the airway.
17. A precordial thump is effective because:
It may result in creation of electrical activity sufficient to stimulate the heart.
- (
18. The chest "thump" should be performed:
as part of the first step in a monitored pt & cardiac arrest

PP-10-184

19. If you find someone who is apparently unconscious & lying on the floor of his apartment, your first step is to:
Position the head & check for breathing

20. You are talking to an injured pt & suddenly he stops breathing consider the following actions:
1. open airway & feel for a carotid pulse
2. Give a thump on sternum & your feet, if indicated
3. Give four rapid breaths of mouth-to-mouth resuscitation
If pulse & breathing are not immediately restored begin CPR.

21. Sometimes mouth-to-mouth breathing is all that it takes to revive an unconscious person. True

22. A sharp blow on the sternum in an attempt to restore the heartbeat of an unwitnessed arrest victim is a waste of time. True

23. Infants & small children are ventilated in basically the same way as adults, except that inflations are faster & less forceful for children.

24. External cardiac compressions may lead to complications. The one most common of these is: fractured ribs
PP-10-185

(26. When should the ventilator deliver the major portion of the breath during two-man CPR?
During the fifth upstroke

26. Choose the correct statements:

- (1) You can usually feel a pulse at victim's neck if heart is beating.
- (2) The best way to determine if the victim's heart is beating is to check pulse.
- (3) If heart is not beating begin CPR.
- (4) The pulse at the wrist should not be used in CPR.

(27. Always check for foreign matter in the victim's throat before starting to breathe for him. False

28. What particular point must a rescuer remember when placing a small child in open airway position forcing the child's head back too far may result in a collapsed airway.

29. How fast should you breathe for a nonbreathing adult, with a strong pulse?
24 ventilations per min.

(30. If a lone rescuer finds a nonbreathing & pulseless motor vehicle accident victim lying on his face on the road, & he suspects that the victim has a back injury, what should he do? pp-10-486

- A. Turn the victim as a unit & begin CPR)
31. Artificial circulation is produced when the chest is compressed & squeezes the heart between the sternum & the spine,
32. Stomach distension is a condition which often occurs during artificial ventilation, which of the following methods should be used to alleviate this condition in a child.
Exert gentle pressure on the child's epigastrium)

PP-10-187

Diabetes

Diabetes mellitus is a hereditary disease characterized by impairment of the body's normal ability to metabolize or utilize food. This defect is manifested by increased amt of sugar in the blood & subsequently by the excretion of sugar in the urine.

1. A deficiency of insulin resulting from a disturbance in the function of the islets of L. of the pancreas or the interference with the action of insulin in the tissue. It involves faulty storage of sugar in the liver, the overproduction of sugar in the liver & possibly a diminished utilization of sugar by the tissue.

Ketosis = In the absence of sugar utilization the metabolism of fats & protein is accentuated to meet the energy requirement of the body & there is increased production of ketones by the liver for distribution to the tissue for combustion.

pp-10-188

1. Organ that manufactures insulin
2. 4 groups of people high risk diabetes
elderly, obese, pregnant beta cell exhaustion
diabetic relatives.
3. Function of insulin
 - A. Move glucose into cell
 - B. Inhibits conversion of glycogen, fats protein to glucose
4. Difference between juvenile & adult diabetes
5. What causes elevated sugar
6. What causes elevated acetone
7. Why does polyuria, excessive thirst, ^{of diabetes} and ^{loss} hunger occur
_{the retina}
8. What are the effects of high sugar & fats on the blood vessels &
9. Why is the diabetic susceptible to skin infections? Why does
it take a long time for infection to heal
10. What 3 things must the diabetic believe
11. What effect does stress have on the blood sugar ^{protein diet}
12. Why should dia avoid sugar & stick to ^{protein diet} carbohydrate ^{need}
13. What effect does infection, trauma, or surgery have on insulin
14. What precaution should be used in giving insulin to prevent
atrophy or hypertrophy of the tissues at the injection site
15. Why if a pt. does not eat for a long period & is given his usual
dose of insulin may he get an insulin reaction
- What is the cause of ketoadidosis in diabetic coma ^{long} a
ketone bodies for cells to metabolize
- Causes of R. of R. nausea, vomiting, anorexia - ^{infection}

Every cell in the body needs oxygen & glucose.
The brain is most sensitive.

If ^{before} infection, increase the need of insulin
surgery

what precaution when giving insulin

1. Problem @ injection site - Rotate

why is a pt. done out for long period

what is the most dangerous - Brain damage.
Not enough sugar PH - it won't pick up CO_2
to much

why is it important, more glucose needed

Notify doctor if fever or vomiting - infection

- 3

PP-10-190

Diabetes

1. What is the organ manuf. Insulin (Pancreas)
2. What type more effected obesity Hereditary other people prey
3. What is function of Insulin - To regulate sugar breakdown
Glucose needs sugar, to slow down process
the liver break down the fats & sugar to be used, sent
to blood stream

Insulin 1. Introduces the broken down starch into the cell. 2. Slows down the food coming down from liver
to blood stream.

Juvenile = Starts in puberty stage. Brittle

Adult = Late onset, Control - diet & oral - tired person

Clinical = means there is a lot of sugar in the blood stream
Not enough insulin to introduce into cells, the
Glucose will spill over to urine.

S&P = when Ketone bodies are still floating in blood stream

1. frequent urination - because the insulin is not present
2. thirst
3. wt. lost - hunger

what are some of the effect of a lot of sugar or fat.

1. Fat & sugar can cause hardening of artery, retina needs a
great deal of oxygen. & increase blood pressure. & heart disease.

1 Blindness

2 High Blood Pressure

3 CHF

If circulation is bad watch feet.

If insulin getting enough

1. what are they getting to eat? High Proteins
2. How much insulin? If fasting or insulin (3) activity & Dr. of running
eat slice of bread

PP-10-191

Insulin Reaction - Low blood

Don't take any insulin or oral medication
1. the symptoms should subside in 10 min. if not repeat
the emergency treatment

after the emergency tx, eat one of the following
as a snack

a glass of milk - 8 ounces

a piece of cheese - 1 inch cub

a glass of milk - 4 ounces & 2 soda crackers
sorbetic acidain

Early symptoms: 1 headache, mental dullness
lack of appetite, excessive thirst
Fruity odor to breath

Late symptoms

nausea & vomiting

abdominal pain or cramps

Increased thirst

flushed, dry skin

Large amt of acetone in urine

High amt of sugar in urine

Increased cholesterol count

Causes: Not taking prescribed amt of insulin
infection, severe emotional stress

Emergency: 1 call your doctor

is to be & keep warm

Have fluids

Test urine at regular times

PP-10-192

18. Fruity acetone breath is symptom of insulin shock
or diabetic coma.

19. why can trache intubation be a symptom of diabetic
coma - what are risks (lactic acid)

20. What can result from the following? his insulin &
eating high fat nausea & vomiting.

21. What are the early symptoms of insulin reaction
headache, weakness, irritability, lack of muscular
coordination, apprehension.

Symptoms: Persistent headache

a feeling of sudden hunger, weakness or nervousness
Visible shakiness

Prickling or numbness around mouth or in fingers

Pale, cold, clammy skin

Emotional confusion, inappropriate crying or laughing
Sluggish double or blurred vision

Loss of consciousness

Stupor, seizure or convulsion - death

Cause = Too much insulin or oral medication

Not enough food

an unusual sort of exercise not balanced
with food intake

Emergency treatment Eat 2 cubes or 2 packets of
sugar or 2 teaspoons of honey or a glass orange
juice

Insulin IV not subq = & dehydration severe
insulin shock

PP-10-193

1. British is closing a plutonium plant because of radiation leaky

Nicaragua = FSLN - left liberation front took hostages they received \$5,000

600 lbs sandwich = 4 hrs. to make
600 children ate it in 15 min
NBC praised it

51% army prisons
26% blacks

LWA - get light backpacked for 8 hrs

Taxes cut
Roosevelt same capitulation by welfare cut
of taxes

PP-10-194