



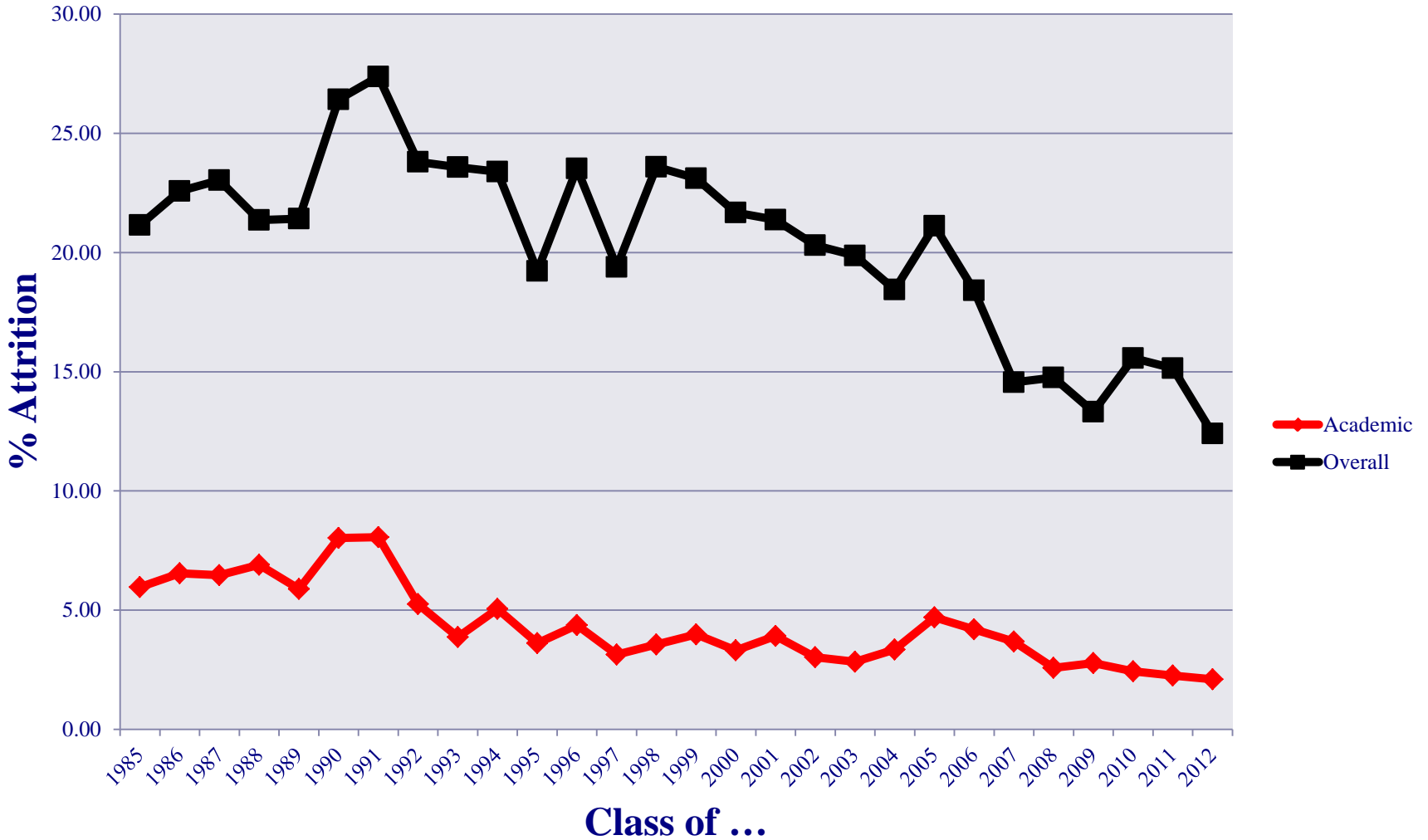
# The Academic Program





# The Developmental Model

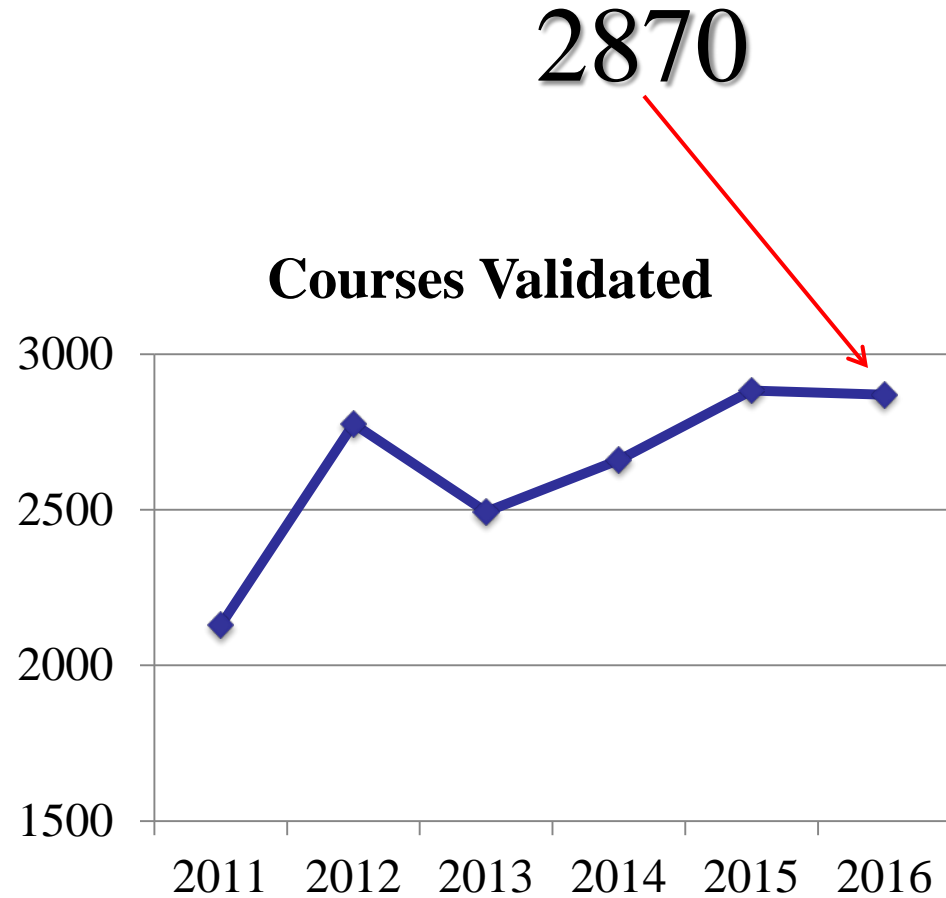
## % Attrition Since 1985





# Validations for the Class of 2016

Subject	# Courses
Math	663
Chemistry	187
Languages	1566
Leadership	71
English	121
Physics	85





# Standard Plebe Year

<b>Fall</b>	<b>Spring</b>
<b>Calculus I</b>	<b>Calculus II</b>
<b>Chemistry I</b>	<b>Chemistry II</b>
<b>English I</b>	<b>English II</b>
<b>Government</b>	<b>Naval History</b>
<b>Seamanship Leadership I</b>	<b>Cyber I</b>



# Early Start – “Critical” Language

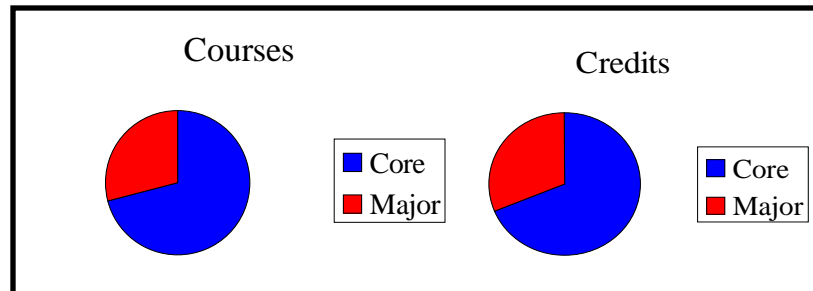
Fall	Spring
Calculus I	Calculus II
Chemistry I	Chemistry II
English I	English II
<i>Language I</i>	<i>Language II</i>
Seamanship Leadership I	Cyber I





# The Core Curriculum

<b>STEM</b>	<b>HUM &amp; SS</b>	<b>PROFESSIONAL</b>
<b>Mathematics (4)</b>	<b>English (2)</b>	<b>Leadership (2)</b>
<b>Chemistry (2)</b>	<b>History (3)</b>	<b>Ethics (1)</b>
<b>Physics (2)</b>	<b>Government (1)</b>	<b>Law (1)</b>
<b>Engineering (4)</b>	<b>Electives (2)</b>	<b>Seamanship/Navigation (3)</b>
<b>Cyber (2)</b>		<b>JO Practicum (1)</b>
	<b>Foreign Language (4)</b>	





# 23 Academic Majors Offered

---

## Division of Engineering & Weapons:

- Aerospace Engineering
- Computer Engineering
- Electrical Engineering
- General Engineering
- Mechanical Engineering
- Naval Architecture
- Ocean Engineering
- Systems Engineering

## Division of Mathematics & Science:

- Chemistry
- Computer Science
- General Science
- Information Technology
- Mathematics
- Oceanography
- Operations Research
- Physics
- Quantitative Economics

## Division of Humanities & Social Sciences:

- Arabic
- Chinese
- Economics
- English
- History
- Political Science

Approximately 2/3 are expected to complete a “STEM” Major



# Graduates Earn A Commission and a Diploma

---

- **Academic GPA  $\geq$  2.0 (“C”)**
- **Physical Education**
- **Summer Training**
- **Honor**
- **Conduct**
- **Aptitude for Commissioning**

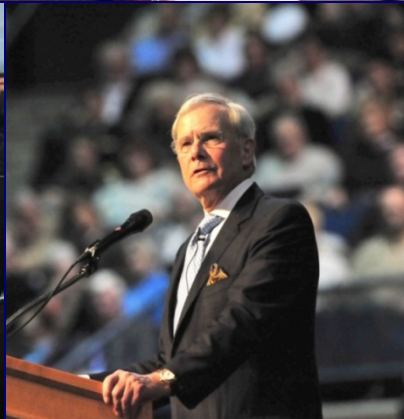






# National Survey of Student Engagement

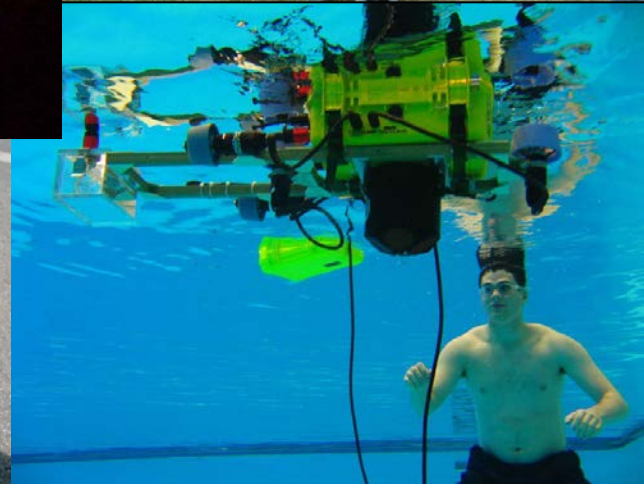
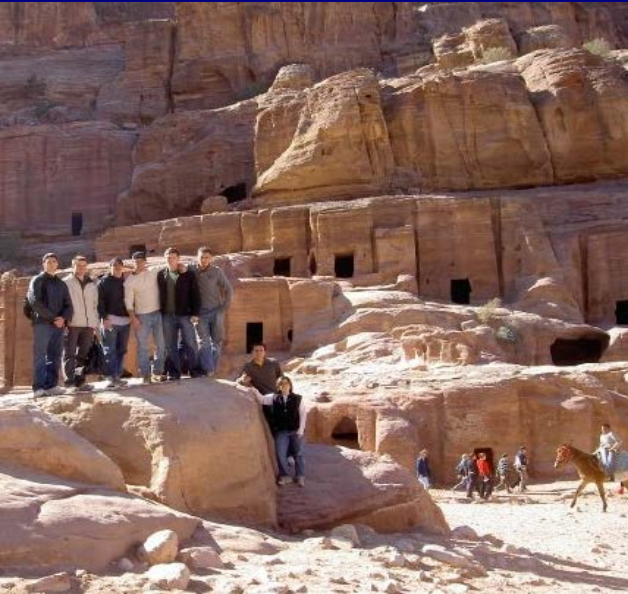
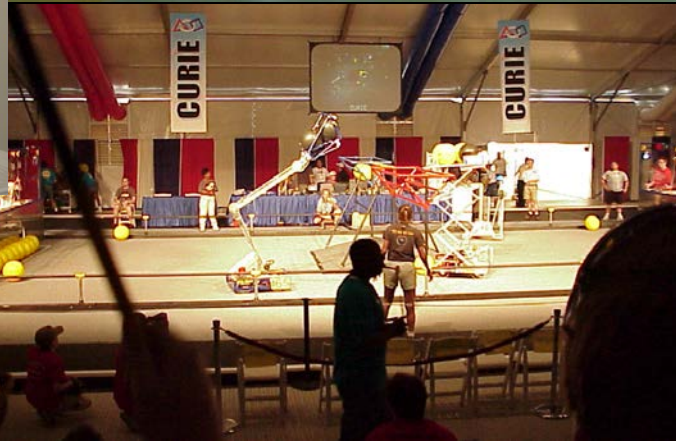
- Challenging intellectual & creative work
- Frequent student-faculty interaction
- Active and collaborative learning
- Complementary learning opportunities
- Supportive campus environment







# Success = ??







# Teamwork

