



POLLUTION PREVENTION AND ENVIRONMENTAL MANAGEMENT SYSTEMS

**GREG MARSHALL,
DIRECTORATE OF SAFETY,
ENVIRONMENTAL AND FIRE POLICY,
MINISTRY OF DEFENCE,
LONDON SE1 0TD, UK**

OUTLINE



- **ISO 14001 ELEMENTS**
- **PREVIOUS ENVIRONMENTAL MANAGEMENT**
- **MOD CORPORATE EMS**
- **P2 SUB SYSTEM**
- **ACQUISITION REFORM**
- **CONCLUSIONS**

ISO 14001 ELEMENTS



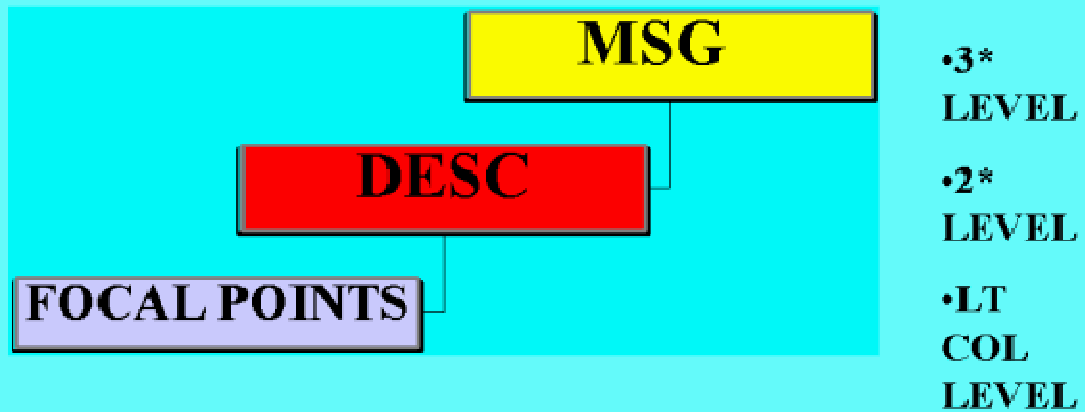
PREVIOUS ENVIRONMENTAL MANAGEMENT



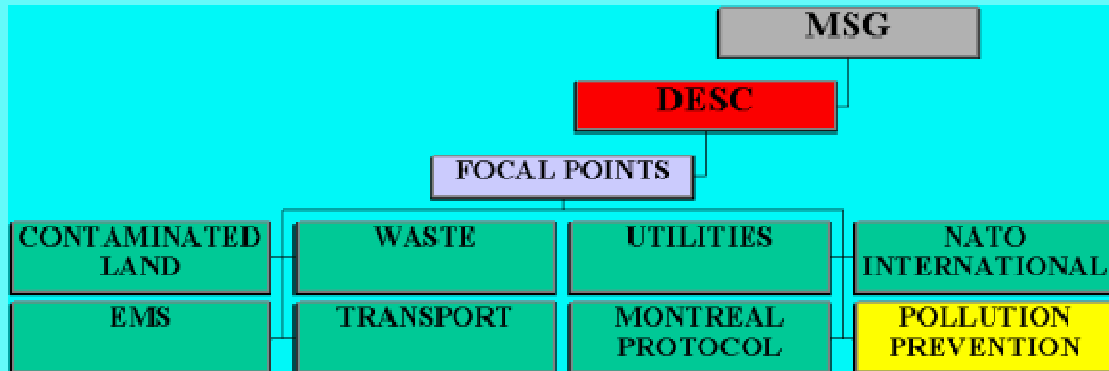
MOD HAD MOST ISO 14001 ELEMENTS

- **SECRETARY OF STATE'S ENVIRONMENTAL POLICY STATEMENT**
- **ENVIRONMENTAL COMMITTEE STRUCTURES**
- **ENVIRONMENT FOCAL POINTS THROUGHOUT THE DEPT**
- **JOINT SERVICES PUBLICATION 418 ENVIRONMENTAL POLICY MANUAL**
- **SPECIALIST ENVIRONMENTAL REVIEW WORKING GROUPS.**

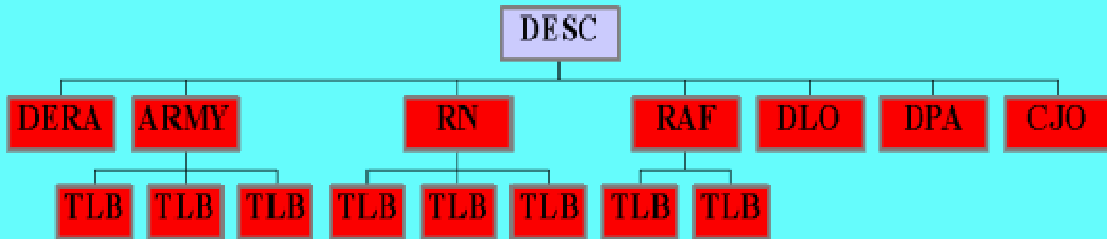
MOD ENVIRONMENTAL COMMITTEES



ENVIRONMENTAL REVIEW GROUPS



DEPT ENVIRONMENT FOCAL POINTS



JSP 418
ENVIRONMENTAL
POLICY MANUAL



PREVENTION & CONTROL OF POLLUTION

- **AIR: LOCAL AIR QUALITY**
- **AIR: MONTREAL PROTOCOL/ GLOBAL ISSUES**
- **WATER**
- **MARITIME AND MARINE**
- **CONTAMINATED LAND**
- **ESTATE MANAGEMENT AND CONSERVATION**
- **NOISE**
- **RADIATION**

**MOD CORPORATE
EMS**



- **MOD CORPORATE EMS
BASED ON ISO 14001
PRINCIPLES**

MOD CORPORATE EMS



- **EFFECTIVE POLICIES SETTING CLEAR DIRECTION**
- **MANAGEMENT STRUCTURES AND ARRANGEMENTS TO DELIVER THE POLICY**
- **MEASURE PERFORMANCE, COLLECT, COLLATE, INTERPRETATE DATA.**
- **REVIEW PROCEDURES BUILT INTO CURRENT STRUCTURES**

MOD CORPORATE EMS



- **NEW ENVIRONMENTAL AUDIT CAPABILITY NEEDED.**
- **ENSURE ENVIRONMENTAL MANAGEMENT PART OF CORE BUSINESS OF DEPARTMENT**
- **TO SET APPROPRIATE PRIORITIES ENVIRONMENTAL NEEDS BALANCED AGAINST EACH OTHER AND COMPETING REQUIREMENTS & RESOURCES,**

MOD CORPORATE EMS



- **GUIDED BY**

- **RAF & RN EMS**
- **NATO CCMS PILOT STUDY INTO
EMS IN THE MILITARY SECTOR**
- **GUIDANCE DOCUMENT ON
IMPLEMENTING EMS FOR
MANAGERS**

KEY EMS ELEMENTS



- **THE CORPORATE MOD EMS WILL PUT THESE ELEMENTS TOGETHER, BUILDING ON EXISTING MANAGEMENT TOOLS AND ORGANISATIONS WHEREVER POSSIBLE.**

**SPECIFIC ISO 14001
REQUIREMENTS FOR
MOD CORPORATE EMS**



- **DEFINE SENIOR/MIDDLE MANAGERS
ROLE IN DEVELOPING/IMPLEMENTING
EMS 4.4.1**
- **APPOINT EMS CHAMPION FROM SENIOR
MANAGEMENT 4.4.1**
- **RECORD UPDATE LEGAL REGULATORY
REQUIREMENTS 4.3.2**
- **DRAFT ENVIRONMENTAL POLICY FROM
ENVIRONMENTAL IMPACTS 4.2**

**SPECIFIC ISO 14001
REQUIREMENTS FOR
MOD CORPORATE EMS**



- **DETERMINE PRIORITISE MOST SIGNIFICANT ENVIRONMENTAL IMPACTS**
4.3.1
- **DEVELOP SET OBJECTIVES/TARGETS FROM ENVIRONMENTAL POLICY, 4.3.3**
- **DEVELOP ENVIRONMENTAL MANAGEMENT PROGRAM TO ACHIEVE OBJECTIVES/TARGETS 4.3.4**
- **DEFINE STAFF RESPONSIBILITIES RESOURCES DRIVE EMS FORWARD 4.4.1**

**SPECIFIC ISO 14001
REQUIREMENTS FOR
MOD CORPORATE EMS**



- **IDENTIFY/DEVELOP AWARENESS TRAINING COURSES 4.4.2**
- **IMPROVE COMMUNICATIONS. 4.4.3**
- **DEVELOP ENVIRONMENTAL MANAGEMENT MANUAL AND RELATED DOCUMENTS 4.4.4**
- **ESTABLISH DOCUMENT CONTROL PROCEDURES 4.4.5**
- **ESTABLISH OPERATIONAL CONTROL PROCEDURES 4.4.6**

**SPECIFIC ISO 14001
REQUIREMENTS FOR
MOD CORPORATE EMS**



- **PREPARE FOR EMERGENCIES/CONTINGENCIES 4.4.6**
- **MONITOR OPERATION OF EMS & SYSTEM'S EFFECTIVENESS. 4.5.1**
- **ESTABLISH PROCEDURES FOR CORRECTING NON-CONTROL AND NON-COMPLIANCE 4.5.2**
- **MAINTAIN RECORDS. 4.5.3**

**SPECIFIC ISO 14001
REQUIREMENTS FOR
MOD CORPORATE EMS**

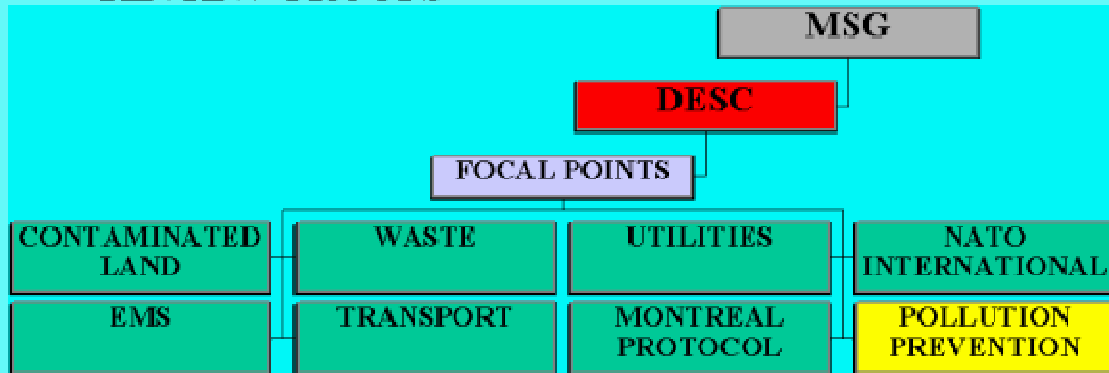


- **ESTABLISH ENVIRONMENTAL AUDIT PROCEDURES 4.5.4**
- **CARRY OUT MANAGEMENT REVIEW OF EMS DETERMINE SUITABILITY, ADEQUACY EFFECTIVENESS, ENSURE CONTINUOUS IMPROVEMENT. 4.6**
- **PRODUCE AN ENVIRONMENTAL STATEMENT**
- **CONSIDER EXTERNAL ACCREDITATION**

EMS SUB SYSTEMS



ENVIRONMENTAL REVIEW GROUPS



EMS SUB SYSTEMS



SUB SYSTEM	ARMY	NAVY	RAF	DLO	DPA	PUS	CJO
WASTE							
POLLUTION PREVENTION							
UTILITIES							
CONTAMINATED LAND							
CONSERVATION							
TRANSPORT							

POLLUTION PREVENTION SUB SYSTEM



ACQUISITION REFORM

- **HEAVY METALS**
- **BATTERIES**
- **PESTICIDES**
- **PAINTING/DEPAINTING**
- **MONTREAL PROTOCOL**
- **FUEL USE BASELINES & TARGETS**
- **VEHICLE CO2 EMISSIONS**

POLLUTION PREVENTION SUB SYSTEM



ACQUISITION REFORM

- **HEAVY METALS**
 - **CADMIUM**
 - **CHROMIUM**
 - **LEAD**
 - **ALTERNATIVES**

POLLUTION PREVENTION SUB SYSTEM



ACQUISITION REFORM

- **BATTERIES**
 - **NICKEL CADMIUM**
 - **LEAD ACID**
 - **MERCURY**
 - **LITHIUM**

POLLUTION PREVENTION SUB SYSTEM



ACQUISITION REFORM

- **PESTICIDES**

- **ORGANOPHOSPHATES**

- **ORGANOCHLORINES**

- **INTEGRATED PEST MANAGEMENT**

POLLUTION PREVENTION SUB SYSTEM



ACQUISITION REFORM

- **PAINTING/DEPAINTING**
 - **SOLVENT EMISSIONS**
 - **CLEANING SOLVENTS**
 - **LOW SOLVENT MATERIALS**
 - **SOLVENT MANAGEMENT PLANS**

POLLUTION PREVENTION SUB SYSTEM



ACQUISITION REFORM

- **MONTREAL PROTOCOL**
 - **HFC REPLACEMENTS**
 - **ESSENTIAL USE BANK**
 - **GLOBAL WARMING POTENTIAL**
 - **USE CONTROLS**
 - **HALON ALTERNATIVES**

POLLUTION PREVENTION SUB SYSTEM



ACQUISITION REFORM

- **FUEL USE BASELINES & TARGETS**
 - **DEFENCE FUELS GROUP**
 - **KYOTO TARGETS**

POLLUTION PREVENTION SUB SYSTEM



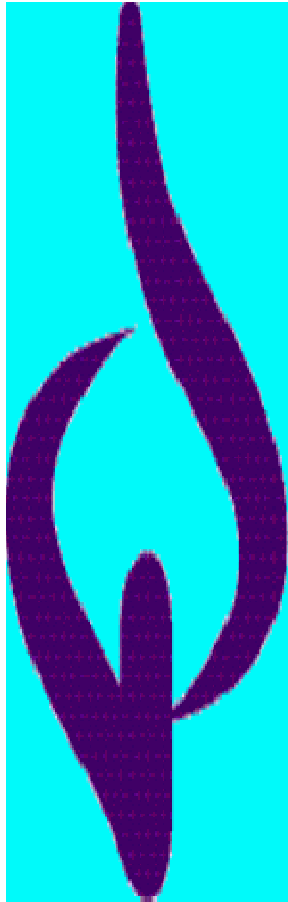
ACQUISITION REFORM

- **VEHICLE CO2 EMISSIONS**
 - **ALTERNATIVE FUELS**
 - **IMPROVED ENGINES**
 - **DRIVER TRAINING**

CONCLUSIONS



- **MOST ISO ELEMENTS ALREADY IN PLACE**
- **ACQUISITION REFORM FOR P2**
- **IMPLEMENTATION OF CORPORATE EMS APR 2001**



DSEF

**DIRECTORATE OF SAFETY
ENVIRONMENT & FIRE POLICY**