

NATIONAL MARITIME CENTER



Welcome to the National Maritime Center's Renewal Wizard.

This tool is designed to help Mariners with questions regarding renewal of their credentials.

Continue



Renewing your credential falls under Title 46 Sections 10, 11, and 12 of the

[Code of Federal Regulations](#)

MERCHANT MARINER CREDENTIALS



We have changed the look and feel of the Merchant Mariner Credential.

If you are RENEWING your credentials then this is where you want to be.

The new credential looks very similar to a US Passport.

[Continue](#)



REQUIREMENTS FOR RENEWAL



For a complete listing of all requirements, please visit the GPO's CFR website.

Continue

Code of Federal Regulations



[GPO's Website](#)

FEES FOR RENEWAL

Merchant Mariner Renewal cost is \$95, \$50 evaluation fee and \$45 issuance fee., which includes modification or removal of scope or limitation; and Original MMC with radio officer endorsements.

This does not include TWIC fees.

Continue

Renewal Fees



You can find more information about fees at [Pay.gov website](https://www.pay.gov)

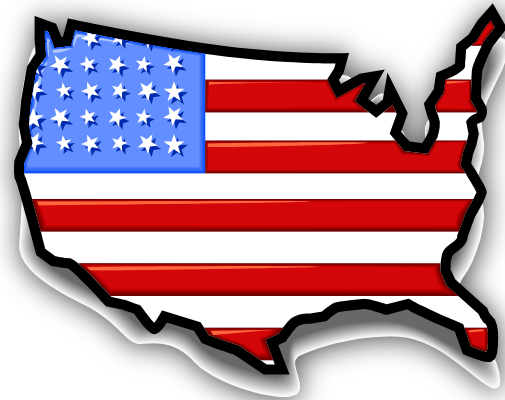
AMERICAN CITIZEN

Renewal Wizard

The renewal wizard will help you with your questions.

If you are a United States citizen then select “**Yes**”.

If not , select “**NO**” for foreign mariner information.



Are you an US citizen?

YES

NO

NATIONAL MARITIME CENTER

United States Citizenship Requirements and Exceptions



With few exceptions you must be a United States citizen in order to obtain a Merchant Mariner Credential ([§ 10.221](#)).

Except for individuals applying for endorsements as operators of uninspected passenger vessels (OUPV) authorizing service on undocumented vessels in accordance with [§11.201\(d\)](#) of this part.

Exceptions

Continue

CG FORM 719B APPLICATION



All Mariners **MUST** complete an application (CG 719 B) in order to renew their Merchant Mariner Credential.

Continue

Required Information

Section I - Personal Data

Section II - Type of Transaction

Section III - Narcotics, DWI/DUI, and Conviction Record

Section IV - Character References – Not Required.

Section V - Mariner's Consent

[CG 719 B](#)

TWIC

Transportation Workers Identification Credential



You must hold a Transportation Worker Identification Credential (TWIC).
If you do not have a TWIC, your application for MMC will not be processed.

Do you have a TWIC?

Continue

TWIC

Transportation Workers Identification Credential



If you do not have a TWIC, please apply for one before mailing this application. TWIC is required!

Continue

You **MUST** have a TWIC Card!

(Federal Code)

If you do not have a TWIC, then select the TWIC Application button to apply for one. It is extremely important that you complete this requirement before applying for your credentials.

Not doing so will result in the return of your application.

TWIC Application

Transportation Workers Identification Credential

TWIC CARD

Please provide a copy of your TWIC card or enrollment receipt with your application.

Failure to comply with the federal regulation will cause your application to be returned.

Continue



Failure to obtain or hold a valid TWIC serves as a basis for the denial of an application for an original, renewal, new endorsement, duplicate, or raise of grade of a Mariner's Credential and may serve as a basis for suspension and revocation under 46 U.S.C. 7702 and 7703.

MEDICAL EXAM

Medical Exam



In order to renew your credential you must complete a medical exam. Have your doctor complete a [CG-719K](#). If you are apply for a entry level rating can use a [CG-719K/E](#).

Please continue for more information.

Continue

MEDICAL EXAMS

Medical Requirements for Renewal



Please select "Continue" for information regarding 'Errors or Omissions' which can delay the issuance of your credential.

Continue

All Mariners **MUST** complete a physical exam ([CG-719K](#)), which is subject to CG review for a fitness for duty determination, before a credential will be issued.

According to [46 CFR Part 10.215.d.1](#): a medical exam must be documented and of such scope to ensure that there are no conditions that pose an inordinate risk of sudden incapacitation or debilitating complication. These reports (46 CFR 215.f) must be submitted within 12 months from the date signed by the licensed medical professional.

COMMON ERRORS

Common Errors



Please review your physical form for these errors. Submitting your application with any of these errors will cause serious delays.

Click the Medical Condition button to review these types of issues.

Medical Conditions

Did your doctor sign the form and put his/her license number?

Missing uncorrected vision (Section III)

Uncorrected vision tested with corrective lenses (Section III)

Missing pulse rate/rhythm (Section II)

No response to medication section (Section VI)

Missing field of vision (Section III)

Hearing not marked as normal or impaired.

Incomplete applications will cause delays

TOP 10 MEDICAL CONDITIONS



Mariners are encouraged to print the sections which address their medical conditions and take it with them to their Primary Care Managers when completing their physical exam (CG-719K). Applicable medical documentation should be submitted at the time of application to facilitate a fitness for duty determination.

Continue

Please visit our Medical website for information regarding **Top 10 Medical Conditions** that need to be address by your doctor.

[NMC Medical Website](#)

For more information regarding medical conditions, reference **NVIC 04-08** by [click here](#).

DRUG TEST

Drug Testing



Have you completed your drug test or program?

YES

NO

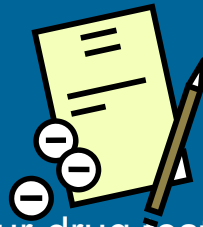
You must complete a DOT 5 Panel Drug Test (CG-719P) from a certified lab or be enrolled in approved drug testing program

Please visit NMC website in regards to drug testing approved labs and tests.

NMC Website

DRUG TEST

Drug Test



You must provide the results of your drug test from an approved lab, or results of random drug testing program that meets the [requirements](#) of 46 CFR 16.230 with your application.

Only DOT 5 Panel drug test from a certified lab will be accepted ([SAMHSA 5 Panel](#)).

[Certified Labs](#)

[Continue](#)

SEA SERVICE

Sea Service Documentation



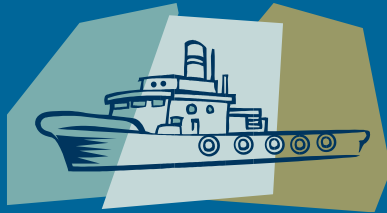
It is up to each US Merchant Mariner to provide all military transcripts, certificates of discharge, or self certification as proof of your sea service.

Missing documentation will delay your application.

Continue

SEA-TIME SERVICE

Sea Service



You **MUST** provide documentation with your application.

Continue



Code of Federal Regulations

According to [46 CFR 11.211](#) Creditable service and equivalents for officer endorsements.

[CFR pertaining to MMC](#)

Renewal Sea Service Calculator

[Click Here](#)

STCW

Standards of Training Certification and Watchkeeping



Each candidate for a renewal of an STCW endorsement must meet the applicable requirements of §11.202 of this chapter and must meet the requirements of section A–VI/2, paragraphs 1 to 4 of the STCW Code (incorporated by reference in §10.103).

For more information please visit our [STCW website?](#)

Continue

STCW

STCW



Each renewal may have a required training component. If you are doing a straight renewal then you need to review the general requirements of the CFR.

Continue

Standards of Training Certification and Watchkeeping

If you are looking for the Approved Courses, Code of Federal Regulations, or STCW click on the following buttons.

Approved Courses

Federal Regulations

STCW

NMC CHECKLIST



Here you will find a list of hyperlinks that will help you complete your application.

All applications must be mailed or dropped off at your local REC.

Continue

- [Application 719B](#)
- [Call Center – IASKNMC](#)
- [Application Check List](#)
- [Drug Testing](#)
- [Medical Forms](#)
- [STCW](#)
- [TWIC](#)
- [User Fees](#)
- [REC Locations](#)

APPLICATION



Congratulations – you are ready to start the application!

Application

NMC Website

Feedback

End of the Wizard!