

NATIONAL MARITIME CENTER



Welcome to the National Maritime Center's Upgrade Wizard. If you are interested in a Raise in Grade or upgrading your current endorsement then please continue.

Continue



NMC is the licensing authority
for the US Coast Guard.

MERCHANT MARINER CREDENTIALS



We have changed the look and feel of the Merchant Mariner Credential.

Today our new credential looks similar to a US Passport which contains all of your endorsements.

Continue



Requirements for Raises of Grade



For a complete listing of all requirements, please visit the GPO's CFR website.

Continue

Code of Federal Regulations



**General Requirements for
Raise of Grade.**

Section § 10.231

Code of Federal Regulations

Check List

Officer Endorsements

Requirements for Raises of Grade



On the right you will find links to qualifications required for Domestic Endorsements which are continued on the next page. If you wish to apply for a Raise in Grade for your Domestic Endorsement you must meet the applicable requirements before the NMC will approve your request.

Continue

Code of Federal Regulations

[General Requirements for Officer Endorsements](#)

[Training Schools with Approved Courses](#)

[Professional Requirements for Deck Officers](#)

[Professional Requirements for Engineer Officer](#)

[Credentialing of Radio Officers](#)

[Professional Requirements for Pilots](#)

[Registration of Staff Officers](#)

[Subjects of Examinations and Practical Demonstrations of Competence](#)

Requirements for Raises of Grade



A continuation of professional requirements for Domestic Endorsements.

Please be sure to submit a complete application in order to avoid any delays.

Continue

Professional Requirements

<u>Able Seamen</u>
<u>Certification Of Tankerman</u>
<u>Credentialing Of Radio Officers</u>
<u>Lifeboatman</u>
<u>Professional Requirements For Deck Officers</u>
<u>Professional Requirements For Engineer Officer</u>
<u>Professional Requirements For Pilots</u>
<u>Qualified Member Of The Engine Department</u>
<u>Registration Of Staff Officers</u>
<u>Requirements For Rating Endorsements</u>
<u>Ro-ro Passenger Ships</u>

FEES FOR RAISE IN GRADE

Raise of Grade cost will range between \$95.00 to \$145.00.

The cost will vary based on the endorsement you seek.

This does not include TWIC or exam fees.

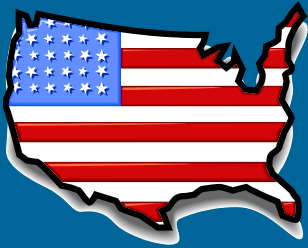
Continue

Raise of Grade Fees



You can find more information about fees - [Mariner Fees](#)

ARE YOU AN US CITIZEN



If you are a United States citizen
then select “Yes”.

If not , select “NO” for foreign
mariner information.



Are you a US citizen?

YES

NO

NATIONAL MARITIME CENTER

United States Citizenship Requirements and Exceptions



With few exceptions you must be a United States citizen in order to obtain a Merchant Mariner Credential.

Except for individuals applying for endorsements as operators of uninspected passenger vessels (OUPV) authorizing service on undocumented vessels in accordance with §11.201(d) of this part.

Exceptions

Continue

CG FORM 719B APPLICATION



All Mariners **MUST** complete an application (CG 719 B) in order to upgrade their Merchant Mariner Credential.

Continue

Required Information

Section I - Personal Data

Section II - Type of Transaction

Section III - Narcotics, DWI/DUI, and Conviction Record

Section IV - Character References

Section V - Mariner's Consent

[CG 719 B](#)

TWIC

Transportation Workers Identification Credential



You must hold a Transportation Workers Identification Credential (TWIC).
If you do not have a TWIC, your application for MMC will not be processed.

Do you have a TWIC?

Continue

TWIC

Transportation Workers Identification Credential



If you do not have a TWIC, please apply for one before mailing this application. TWIC is required!

Continue

You **MUST** have a TWIC Card!

(Federal Code)

If you do not have a TWIC, select the TWIC Application button to apply for one. It is extremely important that you complete this requirement before applying for your credential.

Not doing so will result in the return of your application.

TWIC Application

Transportation Workers Identification Credential

TWIC CARD

Please provide a copy of your TWIC card or enrollment receipt with your application.

A copy of your TWIC card or Enrollment Receipt will help to mitigate any delays in issuing your credential due to TWIC issues.

Continue



Failure to obtain or hold a valid TWIC serves as a basis for the denial of an application for an original, renewal, new endorsement, duplicate, or raise of grade of a Mariner's Credential and may serve as a basis for suspension and revocation under 46 U.S.C. 7702 and 7703.

MEDICAL EXAM

Medical Exam



A physical exam is required if you are upgrading from entry level to qualified ratings and/or if you have not submitted a physical to the Coast Guard in the last 36 months.

[CG-719K](#) or [CG-719K/E](#)

Continue

MEDICAL EXAMS

Medical Requirements for Upgrade



Please select “Continue” for information regarding ‘Errors or Omissions’ which can delay the issuance of your credential.

Continue

All Mariners MUST complete a physical exam ([CG-719K](#) or [719K/E](#)), which is subject to CG review for a ‘fitness for duty’ determination, before a credential will be issued.

In accordance to 46 CFR 10.231.c.8 applicants who have not submitted evidence within the past three years that they have passed all applicable vision, hearing, medical, and/or physical exams required by 10.215 for the particular endorsement sought must submit proof, on a CG-approved form, that the applicant has passed those medical/physical tests and exams.

COMMON ERRORS

Common Errors



Please review your physical form for these errors. Submitting your application with any of these errors will cause serious delays.

Click the Medical Condition button to review these types of issues.

Medical Conditions

- Did your doctor sign the form and put his/her license number?
- Missing uncorrected vision (Section III)
- Uncorrected vision tested with corrective lenses (Section III)
- Missing pulse rate/rhythm (Section II)
- No response to medication section (Section VI)
- Missing field of vision (Section III)
- Hearing not marked as normal or impaired.
- Incomplete applications will cause delays

TOP 5 MEDICAL CONDITIONS



Mariners are encouraged to print the sections of enclosure 3 of NVIC 04-08 which address their medical conditions and take it with them to their Primary Care Managers when completing their physical exam (CG-719K). Applicable medical documentation should be submitted at the time of application to facilitate a fitness for duty determination.

Continue

- [Cardiac disease or Implantable Cardiac Defibrillators](#)
- [Diabetes](#)
- [Psychiatric disorders](#)
- [Sleep apnea](#)
- [Chronic use of narcotic or benzodiazepine medication](#)

For more information regarding medical conditions, reference NVIC 04-08 by [click here](#).

DRUG TEST

Drug Testing



Have you completed your drug test or program?

YES

NO

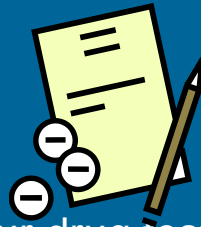
You must complete a DOT 5 Panel Drug Test (CG-719P) from a certified lab or be enrolled in approved drug testing program

Please visit NMC website for more information on approved drug tests and testing labs.

NMC Website

DRUG TEST

Drug Test



You must provide the results of your drug test from an approved lab, or results of a random drug testing program that meets the [requirements](#) of 46 CFR 16.230 with your application.

Only DOT 5 Panel drug test from a certified lab will be accepted ([SAMHSA 5 Panel](#)).

[Certified Labs](#)

[Continue](#)

SEA SERVICE

Sea Service Documentation



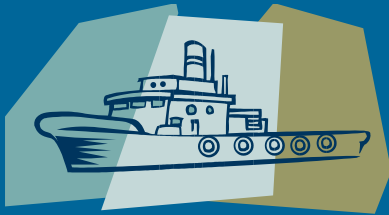
It is up to each US Merchant Mariner to provide all military transcripts, certificates of discharge, or self certification as proof of your sea service.

Missing documentation will delay your application.

Continue

NMC's CHECKLIST

Sea Service



You **MUST** provide documentation
with your application.

Continue



Code of Federal Regulations

[46 CFR 11.211](#)

NMC's checklist is an excellent
resource that will help you to
determine if you qualify for a Raise
in Grade.

[NMC Checklist](#)

STCW

Standards of Training Certification and Watchkeeping



The mandatory requirements for International Endorsements are contained in the STCW Convention and Code (§11.201 and §11.202).

Do you meet the STCW requirements?

Continue

STCW

STCW



Raise of Grade may have require additional training component(s). If you requesting an upgrade you will need to review the requirements located of the STCW and CFR.

Continue

**Standards of Training
Certification and Watchkeeping**

**Click on buttons below for
more information!**

Approved Courses

Check List

CFR

STCW

NMC CHECKLIST



The links on the right will help you to navigate throughout NMC's website for information to help you with upgrading your Endorsement.

Continue

- [Application 719B](#)
- [Call Center – IASKNMC](#)
- [Application Check List](#)
- [Endorsement Check List](#)
- [Drug Testing](#)
- [Medical Forms](#)
- [STCW](#)
- [TWIC](#)
- [User Fees](#)
- [REC Locations](#)

APPLICATION



Congratulations – you are ready to start the application!

Application

NMC Website

Feedback

End of the Wizard!