



▶ MARKET UPDATE.....1

▶ ACCOMPLISHMENTS... ..2

▶ SPOTLIGHT .....3

▶ WRAP UP..... 4

# Clinical BRAC Monthly Update

## February 2010

The CBRAC Monthly Leadership Update provides news and information on the progress of the Clinical BRAC Program. The market updates for the **National Capital Region (NCR)**, **San Antonio Military Medical Center (SAMMC)** and **Medical Command Headquarters Collocation (Business Plan 198)** components are below.

### National Capital Region (NCR)

**Construction of the new Ft. Belvoir Community Hospital (FBCH) complex is 53% complete** as of the end of February 2010. Exterior skin installation is underway on the east elevation of building C, the Oak Pavilion (main hospital).

**The construction of Buildings A (Ambulatory Care) and Building B (Inpatient Care) at the future WRNMMC Bethesda continues to progress on schedule.** Interior wall framing and Mechanical Electrical and Plumbing (MEP) are ongoing in both Buildings A and B in February 2010. **The first of three new parking garages was available for use on 1 Feb 2010** with a ribbon cutting ceremony scheduled for March 2010.

### San Antonio (SAT)

**The SAMMC Topping Out & Million Man Hours Worked Ceremony took place on 25 Feb 10 at the SAMMC project site, on the first floor of the future Consolidated Tower (CoTo).** The event commemorated the completion of structural steel erection for the CoTo and the millionth man hour worked at SAMMC.

Construction efforts continued throughout February 2010. As of 10 Feb 10, the CoTo was 20% complete, renovation packages at the Brooke Army Medical Center (BAMC) were 30% complete, and the Fort Sam Houston (FSH) Primary Health Clinic (PHC) was 84% complete.

**Four intra-facility moves at SAMMC were completed in February 2010:** Uniform Business Office, Logistics Administrative Office, Radiology Transcriptionists, and the Orthopedics Clinic.

### Medical Command Headquarters Collocation (BP 198)

The lease procurement is underway with General Services Administration (GSA) to select a site for the Medical Command Headquarters to house 3,220 personnel from TRICARE Management Activity and the three Service Medical Departments to one contiguous site within the National Capital Region. More information will be publicly available when the lease procurement is complete.



# Milestones and Accomplishments

Site	FEBRUARY 2010	MARCH 2010	APRIL 2010
<b>Financial Management</b>	<ul style="list-style-type: none"> <li>✓ FEB 2010 BRAC Justification book due to Congress</li> <li>✓ FEB 2010 Business Plan Re-Coordination</li> </ul>	<ul style="list-style-type: none"> <li>◆ MAR 2010 Congressional Notifications for FBCH/SAMMC-N UFRs</li> <li>◆ MAR 2010 Congressional Notifications for FBCH Dental Clinic and WHMC Pull-Back</li> </ul>	<ul style="list-style-type: none"> <li>◆ APR 2010 NCR/SAT Mid-Year Review</li> </ul>
<b>NCR</b>		<ul style="list-style-type: none"> <li>◆ 2 MAR 2010 NCR MCM</li> </ul>	<ul style="list-style-type: none"> <li>◆ 6 APR 2010 NCR MCM</li> </ul>
<b>Ft. Belvoir</b>	<ul style="list-style-type: none"> <li>✓ FEB 2010 Bldg A: Start Floor Finishes</li> <li>✓ 25 FEB 2010 Bldg C: Concrete on Deck Complete - Podium</li> </ul>	<ul style="list-style-type: none"> <li>◆ MAR 2010 Bldg D: Start Drywall/Finishing</li> <li>◆ MAR 2010 Bldg E: Permanent Power</li> <li>◆ MAR 2010 N Garage: Available for Temp Construction Parking</li> </ul>	<ul style="list-style-type: none"> <li>◆ APR 2010 First Clinic Available for Start of Transition</li> <li>◆ APR 2010 S Garage: Elevators Complete</li> <li>◆ APR 2010 S Garage: Striping/Sign (Controls) Start</li> <li>◆ APR 2010 Bldg C: Concrete on Deck Complete - Tower</li> <li>◆ APR 2010 Bldg CUP: Start Commissioning</li> <li>◆ APR 2010 Bldg A: Exterior Skin Complete</li> <li>◆ APR 2010 Bldg B: Exterior Skin Complete</li> <li>◆ APR 2010 Bldg B: Watertight</li> <li>◆ APR 2010 Bldg D: Exterior Skin Complete</li> <li>◆ APR 2010 Bldg E: Exterior Skin Complete</li> <li>◆ APR 2010 N Garage: Elevators Complete</li> </ul>
<b>Walter Reed</b>			
<b>Bethesda</b>	<ul style="list-style-type: none"> <li>✓ FEB 2010 Demo to begin on Connector C</li> <li>✓ FEB 2010 100% R4, Medical Surgery Design Package</li> <li>✓ FEB 2010 Dental Readiness Renovation Complete</li> </ul>	<ul style="list-style-type: none"> <li>◆ MAR 2010 Patient Parking Garage Ribbon Cutting Ceremony</li> <li>◆ MAR 2010 Behavioral Health Renovation Complete</li> </ul>	
<b>SAT</b>	<ul style="list-style-type: none"> <li>✓ 25 FEB 2010 CoTo Topping Out Ceremony</li> </ul>	<ul style="list-style-type: none"> <li>◆ 18 MAR 2010 SAT MCM</li> </ul>	<ul style="list-style-type: none"> <li>◆ 13 APR 2010 SAT MCM</li> <li>◆ APR 2010 FY10 Financial Mid-Year Review</li> </ul>
<b>SAMMC-North</b>	<ul style="list-style-type: none"> <li>✓ FEB 2010 Four (4) Intra-facility transition moves</li> <li>✓ 16 FEB 2010 BAMC Reno Pkg F S6 Design Submittal</li> </ul>	<ul style="list-style-type: none"> <li>◆ MAR 2010 Six (6) Intra-facility transition moves</li> <li>◆ 29 MAR 2010 BAMC Reno Pkg F Corrected Final Design Submittal</li> </ul>	<ul style="list-style-type: none"> <li>◆ APR 2010 Nine (9) Intra-facility transition moves</li> <li>◆ 12 APR 10 BAMC Reno Pkg F Ready to Advertise</li> <li>◆ 12 APR 10 BAMC Reno Pkg B Construction End</li> <li>◆ 13 APR 10 BAMC Reno Pkg D Construction Start</li> <li>◆ APR 2010 BAMC Reno Pkg E Construction Start</li> <li>◆ APR 2010 FSH Clinic Construction End</li> </ul>
<b>SAMMC-South</b>			
<b>BP 171 &amp; 173</b>			
<b>BP 198</b>	<ul style="list-style-type: none"> <li>◆ FEB 2010 GSA Continues Lease Procurement Activities</li> <li>◆ 4 FEB 2010 GSA, WHS, I&amp;E, PFPA met to review BP 198 progress</li> <li>◆ FEB 2010 BP Biannual Updates</li> <li>✓ 22 FEB 2010 TMA All Hands BRAC Update</li> </ul>	<ul style="list-style-type: none"> <li>◆ MAR 2010 GSA Continues Lease Procurement Activities</li> <li>◆ MAR 2010 I-Team Meeting</li> </ul>	<ul style="list-style-type: none"> <li>◆ APR 2010 GSA Continues Lease Procurement Activities</li> </ul>

**LEGEND** ◆ Communications Milestone    ◆ Design/Construction Milestone    ◆ Transition Milestone    ◆ Financial Management Milestone    ◆ Decision Making Milestone    ◆ Medical Command HQs Planning Milestone    ◆ Medical Command HQs I-Team Milestone

Fort Belvoir Community Hospital, Feb 12



SAMMC-N Consolidated Tower, Feb 25



## National Capital Region (NCR)

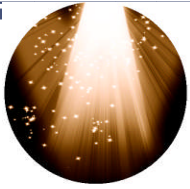
- FBCH: Swoop roof sheathing was completed on building D, the Sunrise Pavilion.
- FBCH: Security camera installation has begun in the North Garage; work on the curtain walls and elevators is ongoing.
- WRNMMC: Finishing touches and punchlist items are being worked on the ICU, Exam, and Reception Area mock up rooms in Buildings A and B

## San Antonio (SAT)

- The U.S. Army Corps of Engineers, Fort Worth District granted a \$26.4 million contract to build a new headquarters building for the Army's Installation Management Command (IMCOM), which will move to Fort Sam Houston as part of the BRAC process.
- On 25 Feb 10, the entire construction community celebrated the Topping Out Ceremony, as the final piece of steel was placed on the Consolidated Tower.

## Medical Command Headquarters Collocation (BP 198)

- GSA is working with representatives from TMA and the three Services on the lease procurement.    tory deadline, 15 Sep 2011.
- The I-Team and Transition Team are underway in their planning efforts to move to the new site by the BRAC statu-    Congressional approval of the lease prospectus is required before GSA can award a lease.



## Spotlight and Major Event

### Spotlight: Robert Velez, Joint Medical Facilities Office (JMFO) San Antonio Project Manager

Robert Velez is one of JMFO's Project Managers on the \$155M multi-phased renovation of the existing Brooke Army Medical Center (BAMC) required to meet the San Antonio Military Medical Center (SAMMC) BRAC mission. Robert joined the JMFO team in March 2009 after completing 23 years in the United States Air Force as a Biomedical Engineering Technician/Facility Manager. His military career culminated in his retirement as the Superintendent of the Facilities Management Office at Wilford Hall Medical Center.

Robert's vast talents were immediately put to good work where he was assigned the challenging task as the team leader for Phase 1 of the temporary modular swing space in support of the renovation construction. Robert worked with our key strategic partners to provide 50,000 square feet of clinical space in only four months. Robert's dedication to our patients was evident during a recent cold snap in San Antonio when the heating system controls on the modular buildings were not working properly. Robert reported to work prior to patient visits to make sure that the heating modifications worked and that the modular buildings were comfortable for our patients, especially the kids in pediatrics.

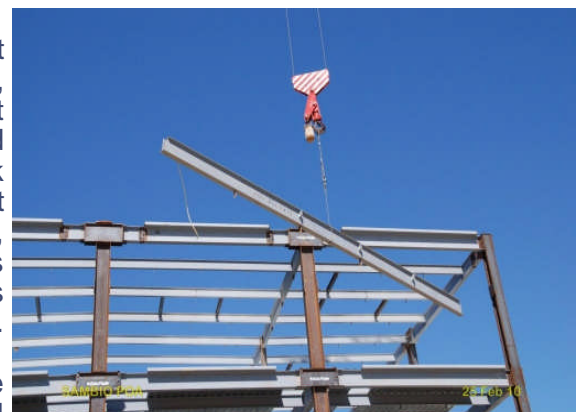
Robert also helps the renovation team manage the daily challenges of executing construction renovations in an operational medical center. His next challenge will be to complete the upcoming Phase 2 of an additional 50,000 square feet of swing space and also provide additional patient parking to improve patient access to care.



### Major Event: San Antonio Military Medical Center (SAMMC) Topping Out & Million Man Hours Worked Ceremony

The San Antonio Military Medical Center - North (SAMMC-N) Topping Out Ceremony was held on 25 Feb 10 at the project site. The event was hosted by the Ft Worth District USACE and general contractor, Clark-Hunt Joint Venture. COL RJ Muraski, Commander - Ft Worth District, was the keynote speaker during a barbeque lunch in the first floor of the Consolidated Tower under construction. Wounded Warriors, Alex Leonard, Will Chick, Mike Owens and Mack McPherson, were special guests at the ceremony. The event marked the completion of erecting 5,290 tons of structural steel, which began in September 2009. A ceremonial beam was signed by the construction team and affixed with commander's coins. It was lifted into place on the structure.

*Final structural beam being placed on the Consolidated Tower*



The ceremony marks the completion of a critical phase of the construction of the Tower, which will become home to a level one trauma center and will add more than 700,000 square feet to the existing Brooke Army Medical Center.

Major Event courtesy of JMFO.



## BRAC in The News

**[StaffordCountySun.com:](#)** *Warner, Moran tour new Belvoir Hospital, 26 Feb 10.*

Former Virginia governor turned U.S. Sen. Mark Warner joined Congressman Jim Moran and other Fort Belvoir leaders Feb. 18 for a tour of the new, state-of-the-art community hospital located just inside Pence Gate.

The \$807 million Fort Belvoir Community Hospital, which is scheduled for completion in Spring 2011, will consist of a multi-story, 120-bed hospital, four attached clinic buildings, a helipad and two parking garages. Both Warner and Moran were impressed by the size of the hospital, which measures more than 1 million square feet. Nearly two years after the first piece of steel was erected at the site, the two officials walked through one of the outpatient buildings and got a glimpse of what many of the exam rooms will look like once completed...

"I'm impressed with the patient-friendly design of the hospital. Without a doubt, this is going to be a world-class facility once it's completed," Warner said at the conclusion of his visit. It's fitting we have something substantive that shows our appreciation for the sacrifices made by our men and women in uniform. It makes me very proud to know we will have a cutting-edge hospital right here in Virginia."

**[Dcmilitary.com \(Comprint military publications online\):](#)** *Tele-behavioral health care to help where needed, 11 Feb 10*

As part of an increasing commitment to addressing behavioral health care for Soldiers, families, and retirees, several tele-behavioral health initiatives are under way. Tele-behavioral health provides high-quality, cost-effective, timely access to outpatient behavioral health care, regardless of the location. Many people are reluctant to seek behavioral health care because they're afraid a "stigma" surrounds behavioral health problems. With online care we have found a resource that aids in

overcoming limited provider availability, geographic distance, scheduling difficulties and the social stigma that sometimes surrounds seeking psychological health care. Using both the Army Medical Department and TRICARE behavioral-health networks will streamline and improve access for Soldiers so that symptoms and risk of suicide can be identified and treated much earlier.

**[Air Education and Training Command:](#)** *Town Hall Meetings address joint basing process in San Antonio, 5 Feb 10*

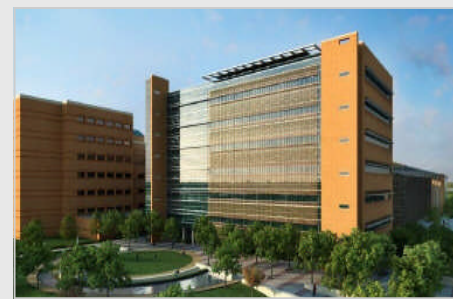
The Army garrison commander [at Fort Sam Houston] hosted two town hall meetings to inform Fort Sam Houston garrison employees about the progress of Joint Base San Antonio Jan. 28...Here at Fort Sam, the benefit we have from the 2005 BRAC decision is all the growth we are seeing here; the growth you are all a part of," Col. Mary Garr said, noting some of the new commands coming to Fort Sam Houston such as the Medical Education Training Command, Installation Management Command Headquarters and Family and Morale.

**[CorridorInc.: Daily Edition:](#)** *BRAC still a major priority in money-tight 2010, officials say, 2 Feb 2010*

Maryland made progress in preparing for thousands of new military jobs despite the faltering economy, but 2010 could be an arduous year if funding cuts prevail. "The budget environment is much more limited than when we started out several years ago, but it still reflects [Base Realignment and Closure] as a major priority," said Lt. Gov. Anthony Brown, Maryland's point person for BRAC efforts. Brown presented the 2009 BRAC update report in early January, and characterized the year's accomplishments as items that "are not new flashes in their own right but collectively show a steady persistent effort to be ready."

## Building for the Future

The pictures below represent the future facilities (from left to right) of the **San Antonio Military Medical Center North (SAMMC-N) Consolidated Tower (CoTo)**, the **Ft. Belvoir Community Hospital (FBCH)** and the **Walter Reed National Military Medical Center (WRNMMC)**. Once completed, these medical facilities will provide leading, world class healthcare to all service members and their families.



External Links Disclaimer - The appearance of hyperlinks to external sites does not constitute endorsement by TMA of the linked web site or the information, products or services contained therein. For other than authorized activities such as military exchanges and Morale, Welfare and Recreation sites, TMA does not exercise any editorial control over the information you may find at these locations. Such links are provided consistent with the stated purpose of this edition of the Clinical BRAC Newsletter.