

142723

PAROLE

Technical Assistance Manual

Thomas A. Regulus

National Youth Gang Suppression and Intervention Program
School of Social Service Administration
University of Chicago

Disseminated By:
National Youth Gang Information Center
4301 North Fairfax Drive, Suite 730
Arlington, Virginia 22203
703-522-4007
800-446-4264

NYGIC Doc.# D0020

This draft report was prepared under Grant number 90-JD-CX-K001 from the Office of Juvenile Justice and Delinquency Prevention (OJJDP), U.S. Department of Justice.

Points of view or opinions expressed in this document are those of the authors and do not necessarily represent the official position or policies of the U.S. Department of Justice

142723

142723

**U.S. Department of Justice
National Institute of Justice**

This document has been reproduced exactly as received from the person or organization originating it. Points of view or opinions stated in this document are those of the authors and do not necessarily represent the official position or policies of the National Institute of Justice.

Permission to reproduce this ~~copyrighted~~ material has been granted by

Public Domain/OJP/OJJD

U.S. Department of Justice

to the National Criminal Justice Reference Service (NCJRS).

Further reproduction outside of the NCJRS system requires permission of the ~~copyright~~ owner.

ACKNOWLEDGEMENTS

Many people and organizations contributed to the development of the Parole/Aftercare Technical Assistance Manual. They brought a wealth of experience and ideas to their review of our materials. They read, evaluated, and critiqued early drafts of the document, serving as facilitator and participants at several working conferences.

Several worked with us over an extended period. We hold special appreciation for their enthusiastic help. They include:

Barry Glick, State Division for Youth, New York
William Lockwood, Gang Information Services, California

We must also thank the following for their assistance:

Deirdre Morgan, Health and Social Services, Wisconsin
Ellen Pruitt, Adventures in Change, Colorado
Tal Owens, Bureau of Children and Youth Services, Pennsylvania
Naomi Post, Restitution and Resource Planning, Pennsylvania
Gil Rael, Division of Youth Services, Colorado
Nate Wells, Community Learning Centers, Colorado

TABLE OF CONTENTS

EXECUTIVE SUMMARY	v
CHAPTER 1/INTRODUCTION	1
A. Program Mission and Background	1
B. Purpose of the Manuals	2
C. Problem Statement	3
D. Discussion of Terms and Issues	6
E. Approach to the Problem	13
F. Overview of the Grassroots Organization Manual	17
G. Summary	18
CHAPTER 2/YOUTH GANG MEMBERS AND PAROLE/AFTERCARE SERVICES .	20
A. Overview of the Parole/Aftercare Manual	20
B. Program Development	22
C. Summary	23
CHAPTER 3/Pre-assessment AND ASSESSMENT OF THE GANG PROBLEM	24
A. Stage 1: Pre-Assessment Issues	24
B. Stage 2: Assessment	26
C. Summary	38
CHAPTER 4/DESIGNING AND IMPLEMENTING THE GANG PROGRAM	39
A. Stage 3: Action Plan Objectives	39
B. Stage 4: Selecting and Operationalizing Strategies	40
C. Stage 5: Program Implementation	54
C. Summary	57
CHAPTER 5/MONITORING AND EVALUATION	59
A. STAGE 6: MONITORING AND EVALUATION	59
C. Summary	60
BIBLIOGRAPHY	63
APPENDIX A/LIST OF REPORTS	64
APPENDIX B/GLOSSARY AND DISCUSSION OF TERMS	69
APPENDIX C/FIGURES, TABLES, AND EXHIBITS	81

EXECUTIVE SUMMARY

Parole and aftercare agencies have a role to play in the reduction of serious and violent youth gang crime which has spread to many communities across the nation. Special gang suppression and intervention programs are needed to reduce reinvolvement of paroled gang youths in crime after their release to the community from correctional institutions. This manual outlines a six stage parole anti gang planning process: pre-assessment, assessment, development of program goals and objectives, strategy selection, implementation, and monitoring and evaluation.

The pre-assessment, stage 1, prepares parole staff for the program design stage. Administrators and staff must determine whether a gang problem exists, define what is meant by gang and gang youth behavior, and establish a staff team to conduct the assessment.

The assessment, stage 2, develops objective knowledge about the gang problem and the resources of the particular parole agency and community available and needed to deal with it, including: the specific characteristics of the paroled gang youths, the specific problem they create for the agency and community, supervision requirements, social service needs, the chronic or emerging context of the problem, and staff capabilities necessary for an effective gang program. The summary of the assessment findings provides a prioritized set of targets and a framework for the development of the parole/aftercare agency's gang suppression and intervention program.

Stage 3 of the planning process involves the establishing of program goals and specific long and short range objectives. In stage 4, strategies and procedures are identified to achieve program objectives. An appropriate balance of strategies - organizational development, community networking, suppression, social intervention, and opportunities provision strategies - is required. Parole agencies with serious gang parolee problems particularly in chronic gang context communities call for greater emphasis on all categories of strategies than do emerging gang community contexts.

Stage 5 comprises detailed planning by the parole gang coordinating unit and parole supervision unit staff. The coordinating unit should provide policy direction and a design for overall integration of program elements. In stage 6, monitoring and evaluation are used to provide assurance that program strategies and activities are implemented according to design. Monitoring and evaluation are used to determine whether program objectives are being met, and whether the gang problem is being controlled and reduced. Information is provided for modification of the program, as needed.

The principles, procedures, and processes outlined in this manual are applicable to parole and aftercare programs dealing with gang youths, whether under the auspices of state, county or local government, or private and non profit community agencies.

CHAPTER 1

INTRODUCTION

- A. Program Mission and Background
- B. Purpose of the Manuals
- C. Problem Statement
- D. Discussion of Terms and Issues
- E. Approach to the Problem
- F. Overview of the Grassroots Organization Manual
- G. Summary

A. Program Mission and Background

There has been an increase in the youth gang problem and the need for information and guidance.

Criminal youth gang activity represents a serious threat to the safety and security of local citizens and impedes positive youth development. In recent years higher levels of youth gang violence and gang member-related drug trafficking have been reported in an increasing number of neighborhoods, high schools, public housing projects, correctional institutions and other social contexts throughout the country. Police in small towns have begun to identify "gangs" and are requesting assistance in how to deal with them.

In response, the Office of Juvenile Justice Delinquency Prevention, U.S. Justice Department entered into a cooperative agreement with the School of Social Service Administration, University of Chicago in October, 1987 to conduct the National Youth Gang Suppression and Intervention Program. This program was initiated as a four stage Research and Development process: Assessment, Prototype/Model Development, Technical Assistance, and Testing.

This technical assistance manual is part of a four stage research and development process.

Three of the four stages have been completed. Stage 1 included a comprehensive review of the research and program literature on youth gangs, a survey of programs in 45 cities, selected site visits, conferences, and special studies. During Stage 2 gang suppression and intervention models were produced for police, prosecutors, judges, probation, corrections, parole, schools, employment,

community based youth agencies, grass-roots organizations. Additionally, separate manuals for comprehensive planning and for community mobilization were developed.

Twelve manuals have been produced.

Stage 3 involved the creation of 12 technical assistance manuals which provide guidelines to implement the policies and procedures presented in the models. The ten agency manuals specify both organizational and community perspectives for dealing with the youth gang problem. The other two manuals outline specific procedures and processes of planning a comprehensive community approach to youth gang suppression and intervention. (See Appendix A for a list of documents.)

Certain processes were used to develop the manual.

The program models and technical assistance manuals were based on the findings of the initial project assessment stage as well as extensive consultations with policymakers, administrators and practitioners at local and national levels. Law enforcement, particularly front line gang specialists, were important from the start of the program in identifying the problem. Two regional conferences were held with policymakers and administrators as well as practitioners from 16 cities who contributed to the development of the final version of the manuals.

B. Purpose of the Manuals

The purpose is to present a set of guidelines to reduce youth gang crime.

The purpose of the technical assistance manuals is to present detailed steps for the control and reduction of youth gang crime, especially gang-motivated violence. The manuals seek to provide governmental authorities, criminal justice organizations, social agencies, and community groups with strategies which encourage gang-prone and gang-involved youth to terminate criminal activity and participate in legitimate social, academic, and employment pursuits.

Broad preventive policies which deal with larger social issues such as poverty and racism, housing, education, jobs, and health care are addressed only on a limited basis in the manuals. Key issues of family breakdown, violence in the media, and the proliferation of sophisticated weapons need to be directly addressed as they contribute to the youth gang problem. They are presented here mainly as contextual

conditions that special organizational policies and procedures and community mobilization must deal with and change, if not directly then indirectly.

Administrators and policymakers are the primary audience.

Local administrators and policy makers are the primary audience, but the manuals should also be useful to other officials and personnel concerned with the problem, including agency supervisors, front-line workers, and community volunteers.

The manuals are not intended to serve in the place of more general models and manuals dealing with delinquent or troublesome youth in the criminal justice and human service fields; they are intended as a supplement to them. Even so, the manuals should be of value in addressing youth crime more generally. This is so because the youth gang problem can be viewed as part of a larger set of crime and delinquency and youth socialization problems.

C. Problem Statement

The gang problem has changed and grown more serious in most regions of the country.

During the 1980s and early 1990s, more criminally oriented and better organized gangs or cliques have become prevalent in many urban and smaller communities. More young people from diverse backgrounds and settings are joining gangs to meet social and economic needs not satisfied through existing institutions, e.g., family, school, and employment. The youth gang has become an alternative mainly anti-social institution for an increasing number of youth.

Poverty and social disorganization are key conditions contributing to the problem.

Why youth gangs have developed and become more criminal and complex organizations is not clear. The type and severity of youth gang problems may be largely a response to two conditions, *poverty* or limited access to social opportunities and *social disorganization*, i.e., the lack of integration and stability of social institutions including family, school and employment in a local community.

Certain factors exacerbate these two social conditions to produce varying gang subcultures and systems. They include:

- ▶ large and rapid population movement of low income minorities into a community;
- ▶ intergenerational gang traditions;
- ▶ defects of social policy and coordination of service delivery at local and national levels;
- ▶ institutional racism;
- ▶ insecurities of certain working and middle class populations "threatened" by newcomers;
- ▶ the growth of criminal opportunities; and
- ▶ possibly, influence of the media.

Examples are the following:

Under different community conditions, different types of gang problems appear to develop.

Violent youth gang subcultures often develop when gang-affiliated African American and Hispanic youth move from central cities to smaller cities and suburban areas without adequate social, family, economic, and educational supports. Violent gang subcultures may also develop when new waves of poor immigrants from Mexico, Central America, the Pacific Islands, Vietnam, Hong Kong, Korea, Philippines and other Asian countries arrive in urban communities. The newcomer groups are often met with hatred and resentment, sometimes manifested in physical attacks. Gangs may form and become rapidly entrenched, first as defensive, and then as offensive groups.

Furthermore, in ghetto, inner city African-American and Hispanic communities, a limited criminal opportunity system often develops. Gangs in these communities may change from status-oriented, conflict groups and assume a highly predatory, criminal-gain character. Over time, sophisticated instrumental rather than traditional or status-oriented youth gangs may develop, with special interest in drug trafficking and other economic criminal activity.

There are variations in the gang problem by race/ethnicity, class, and newcomer status.

In some communities across the country, particularly in the western states but increasingly elsewhere, the influx of low income and working class Pacific-Islander and Asian groups e.g., Tongan, Filipino, Hong Kong, Korean, Vietnamese, Laotian, or Cambodian, has resulted in other varieties of youth gang problems. Second generation youths, born in this country or who arrived as pre-teens, may seek protection, prestige, and income through gang membership. Some of these gangs adopt African-American or Hispanic

gang patterns; others become closely connected to traditional ethnic-based, adult criminal organizations. Criminal activities can include home invasions, business extortion, robbery, rape, intimidation and a range of racket activities.

These newcomer youth gangs, and the Asian communities upon which they prey, are difficult for local law enforcement, schools, and community organizations to penetrate or influence because of cultural, communication, and trust problems.

Growing economic, social, and cultural pressures can contribute to the development of youth gangs.

Some blue-collar or middle class communities are characterized by growing economic, social and cultural pressures as well as by increasing family or personal disorganization. Some of these formerly stable, predominately white communities have become centers for youth groups with a "nothing to lose attitude." Youth gangs or their equivalent such as Satanic, Stoner, punk rocker, hate, Neo-Nazi, or racist Skinhead groups may participate in a wide range of loosely organized criminal acts, characterized by perverse and negative behavior, including vandalism, drug use, homosexual assaults, and even homicides.

Additionally, in certain stable, lower middle class communities, whether African-American, Latino, Pacific Islander, Asian, white, or Native American, the gang problem may assume a more organized and usually less violent character. Youth may become relatively more involved in extortion, car theft, burglary, robbery, sophisticated drug trafficking, and various lucrative quasi-racket activities which are not necessarily conducted in the "home communities." Legitimate business and criminal interests may be relatively well integrated.

Furthermore, specialization of criminal youth gang patterns by race and ethnicity seemingly exists. Economic, social and cultural factors may, in fact, be the cause. Thus, some African-American youth gang or clique members may be heavily engaged in street level crack-cocaine trafficking; Mexican-American youth gang members may be relatively more involved in violent turf based activity, and Asian gang members may be more mobile and closely related to adult crime organizations involved in crimes such as extortion,

robbery, and international drug trafficking.

However, these youth gang subcultures also exist side by side, interact, integrate with, or succeed each other over time. In some communities youth gangs are inter-racial and inter-ethnic.

Violence projected by the media may exacerbate the problem.

In spite of the many and changing varieties of gang subcultures which can be found, a common denominator among them is that most of these groups are comprised of youth who share somewhat similar values and a keen sense of personal failure and low self-esteem. For many gang youth, violence has become an acceptable way of life, partially sanctioned by the larger society. Violence is seen on nightly newscasts, in the movies, on evening television and Saturday morning cartoons, and encouraged by certain "rap" stars. Violence is projected as a means of resolving authority, low self-esteem and race/ethnic problems.

D. Discussion of Terms and Issues (See also Appendix B Glossary)

Key components of the problem are the youth gang, youth gang member, and the gang incident.

It is important to accurately identify key components of the youth gang problem in order not to exaggerate, deny, or mythologize them. This is necessary in order to develop appropriate policies and procedures to deal with the different or varying street gang problems and subcultures encountered. These components are: 1) the criminal youth gang, 2) the youth gang member, and 3) the gang incident.

Gang-motivated violence is the key but not exclusive concern of the manual.

The central focus of the manual is control and reduction of gang-motivated violence. We are not primarily interested in ephemeral delinquent groups or in highly organized drug trafficking by groups concerned only with profit, although there are often important connections between these associations and the youth or street gang. However, we are concerned with predatory youth cliques or drug trafficking groups to the extent they participate in, depend on, and influence the development of violent gang activities.

Youth gang members engage increasingly in both violent status-related as well as entrepreneurial or predatory criminal activities. If a youth group engages primarily in criminal

entrepreneurial activity and participates periodically in serious violence, it falls within the scope of our concern.

Our concern is also with differences between emerging and chronic gang problem communities and the need for prevention and especially early intervention services.

1. Criminal youth gang

This is a group often comprising both juveniles and young adults in regular interaction with each other who engage in a range of social and anti-social behaviors. Cliques or members engage repetitively or at times spontaneously in violent, predatory, and criminal gain behaviors. The criminal youth gang may be located within a neighborhood or across neighborhoods and even cities. It may be loosely or well organized with established rules of conduct. The youth gang may have a name, turf, colors, signs, symbols and distinctive dress. The youth gang often promotes mutual support among members and conflict with competing gangs or established authority.

The traditional youth gang is turf-based and status-oriented, but other kinds of gangs have also developed.

Many of these groups are traditional turf based gangs. Traditionally, the primary function of the youth gang has been to establish or protect the group's reputation and status within a framework of shared or communal values. This continues to be true for many youth gangs today. Some youth gangs, however, do not display colors and are not primarily concerned with social status, but are more gain oriented and more rationally organized.

2. The Youth Gang Member

While the criminal youth gang includes some youth who conform primarily to conventional norms; many, however, engage in a range of criminal behaviors.

The focus of concern is the youth gang member 12 to 24 years of age.

Most gang participants are in the age range of 12 to 24 years. Some pre-adolescents as well as persons into their 50s have been reportedly engaged in gang activities. However, the most serious and violent gang activity tends to be committed by older adolescents and young adults. Some gang members may join for a period as short as a day, a week, or a month; others are members for years. Some

members move from low to high gang status, from less serious to more serious criminal gang behaviors, and vice versa, sometimes in different gangs.

Fewer females than males are gang members.

Far fewer females than males join youth gangs, although with the increase in number of gangs throughout the country more female members are probably involved in serious youth gang activities than in an earlier era. Available evidence indicates, however, that females usually join gangs later and leave earlier, and are usually involved in less violent or serious criminal behavior than males. About 9 times as many males as females are arrested for gang crimes according to several studies. Less than one percent of gang homicide offenders are female.

Attention needs to be directed to high risk female gang members.

Female members typically are in groups affiliated with male gangs. Sometimes females are integrated directly as members into the gang proper, and are less frequently involved in independent all-female criminal youth gangs. There is some recent evidence that females have assumed leadership roles in certain gang or criminal group activities, such as drug trafficking, in a few cities. Special attention needs to be directed to high risk female gang members who are likely to be physically and sexually victimized, or who induce or facilitate male gang member assaults against other gangs.

Traditional gangs may have different type of members: identifiable leaders, core, regular, associate, soldier, peripheral, wannabe, floater, veteran or old-head. The presence and definition of these categories of gang members, however, may be quite variable or defined differently in communities across the country. Of special interest, for purposes of control and prevention are two categories of gang youth: 1) the more serious, hardcore, often older gang youths, and 2) the younger, high risk, often less committed gang youths.

Different types of gang members should be carefully identified.

Agencies need to carefully identify gangs and gang members. This process should depend on use of *multiple* criteria such as gang member self-admission, statements by reliable witnesses, verification by a second independent agency source, prior police records and the youth's regular association with a known gang member. Participation by the

youth in certain serious gang-motivated criminal incidents such as drive-by shootings must ordinarily precipitate a gang member identification process for gang suppression and intervention purposes.

3. The Gang Incident

A gang incident is the unit for classifying and reporting an event as a gang crime, especially for law enforcement purposes. Reported gang incidents become the basis for determining whether a gang problem exists and assessing its scope, and thereby the nature and extent of the community response to it.

Different definitions of the gang incident exist.

The gang homicide is usually the key and most reliable measure of the seriousness of gang crime. However, identification of gang incidents, e.g., homicide, assault, or robbery, is neither a simple nor a standard procedure. Two different procedures or variations of them, are currently employed to determine whether a gang incident has occurred and should be recorded for law enforcement, and, consequently, public policy purposes.

- Gang-Motivated

The gang-motivated definition focuses on the nature of the criminal act.

In this procedure, according to the Chicago Police Department, a criminal act is defined as a gang incident if it grows out of gang motivation, interest, or specific circumstances which enhance the status or function of the gang. These acts include: inter-gang violence, gang retaliation, turf protection, intimidation, robbery, recruitment, or other criminal activity which affects the gang's reputation or interests as a whole. One or more members of the gang may be involved as a suspect, witness, offender or victim in these circumstances. In classifying the incident, focus is on the nature of the specific situation in which the illegal act occurs, such as a drive-by shooting or yelling a gang slogan in the course of the crime.

Crimes such as burglary, car theft, prostitution, and drug trafficking by a gang member are problematic because it is hard to determine whether the act is gang-motivated. Many criminal acts serve individual member needs unrelated to gang interests. On the other hand, seemingly individual or

self-serving crimes by gang or aspiring gang youth may be gang-motivated. For example, a youth may be required or feel compelled to commit a particular property or person crime because of pressures by the gang.

- Gang-related

The gang-related definition focuses on identification of the criminal suspect as a gang member.

This procedure, according to the Los Angeles County Sheriff's Department, is based on the characterization of a crime or delinquent act as a gang incident when the suspect, offender or victim is a gang member, regardless of gang motivation or circumstances. Usually any serious criminal act, especially of a violent, predatory, or drug trafficking nature, in which a gang member is involved, can be classified as a gang incident. For example, the crime of a gang member who steals from a store - even though that act has nothing directly to do with his gang membership - would be classified as a gang-related incident. (See Appendix B for a discussion of mixed situations and erroneous classification of group delinquency as gang crime.)

- Which Definition to use

The narrow gang-motivated definition avoids excessive labelling.

The argument in favor of using the gang-motivated definition is that it focuses sharply on the circumstances of the incident rather than the identification of the individual as a gang member. It may be more precise and valid than the gang-related definition. It withstands court challenges better. It also avoids excessive labelling or exaggeration of the gang problem.

The counter argument is that the gang-motivated definition minimizes the actual scope of the gang crime problem. It may encourage organizational or community denial of the problem. A key assumption of the proponents of the gang-related definition is that a gang member is likely to engage in a wide range of serious crimes because gang membership predisposes him or her to do so. Evidence for this argument is not substantial, however.

The gang-related definition may be more useful to criminal justice officials.

Police and prosecutors generally believe that it is desirable to identify gang members and their activities as completely as possible. Police are particularly concerned that the full

range of criminal activities of the gang member be available for efficient tracking and investigation purposes.

We recommend a procedure that avoids excessive labelling of youth but ensures protection of the community. A gang-incident procedure should be devised which records and distinguishes between gang-motivated and non-gang-motivated crime committed by the gang member. All serious criminal incidents by repeat gang offenders should be clearly "flagged" on criminal justice computer systems. An effective computerized information system permits use of either or both procedures to track gang-motivated incidents and gang member crime.

4. Gang Problem Contexts, Chronic and Emerging

Emerging and chronic gang problem contexts may require different suppression and intervention approaches.

With the growth and spread of the youth gang problem, a two-fold categorization of the problem context has come into use: Chronic and Emerging. Our manuals stress the differences in these contexts as a basis for the development of distinctive strategies, policies and procedures for gang suppression and intervention. Simply put, a more preventive or early intervention approach may be required in the emerging gang problem context, while a more elaborate and formalized suppression, intervention and prevention approach may be necessary in the chronic context.

The gang problem has had a longer history and is usually better organized and more severe in the chronic context.

- Chronic Gang Problem Context

Such an organizational or community context is characterized by persistent or periodic crises of major gang member violence and sometimes related drug trafficking extending over a five to ten year or more period, or even decades. Youth gangs are usually better organized in such communities which are often located in larger or older cities. These contexts are likely to be found in impoverished, ghetto, or transitional areas or ports of entry of inner cities, although they are increasingly found in smaller cities and suburban communities.

The gang problem is recent, less well organized, but sometimes

- Emerging Gang Problem Context

This organizational or community context is characterized by less well organized and persistent but at times serious forms

very serious in the emerging context.

of gang violence and gang member drug trafficking. The gang problem has usually been present and/or recognized for about five years or less. To some extent, the development and spread of the problem may be traced to the influence of new settlers or gang crime entrepreneurs for example, drug traffickers, from chronic problem cities or contexts. Youth gangs in emerging problem areas tend to be fewer in number and most often evolve out of local delinquent, sometimes social groups under deteriorating economic or social situations for minority, newcomer, or socially isolated populations.

The distinction between the concepts of chronic and emerging gang problem communities, however, are not sharp. Indicators related to the onset of the problem, its duration, degree of gang organization, severity of gang violence and related gang member drug trafficking, as well as the appropriate response to the problem(s) are not neatly categorized by the terms "chronic" and "emerging".

Emerging gang problem communities may develop into chronic; and chronic gang problem communities may go through periods of sharply diminished gang activity before the problem re-emerges. Different parts of a community or jurisdiction may be characterized by different stages or degrees of severity of the problem at a given time.

5. Variability of Violent Gang, Drug Trafficking and Crime Problems

It is important to understand that, despite media and law enforcement claims, youth gangs involved in gang violence are not necessarily involved in drug trafficking. A direct and causal relationship between youth gangs and drug trafficking has not yet been demonstrated. Some communities which have high levels of youth gang violence may have relatively low levels of drug trafficking; other communities with high levels of drug trafficking may have low levels of youth gang activity.

We observe that over the last several years, Los Angeles and Chicago, with the highest levels of gang homicide in the country and very high levels of drug trafficking, report that less than five percent (5%) of gang homicides are associated

with drug trafficking. Drug trafficking appears to be related to serious violent street gang behavior only in a limited sense. Drug trafficking, nevertheless, may succeed and may under certain conditions serve either to diminish or increase patterns of youth gang violence.

High levels of general crime and gang crime are not necessarily closely associated.

Finally, high levels of general criminality in a community do not necessarily indicate high levels of gang activity. Some cities with the highest levels of youth homicide and drug trafficking may have relatively limited youth gang activity.

6. Prevention

Secondary prevention is included in the manuals' perspective.

The focus of this and the other technical assistance manuals in our Research and Development program is on issues of intervention and suppression in contexts where the gang problem is clearly present. Here, prevention refers mainly to secondary forms of prevention, or early intervention, which reduces the likelihood that highly gang-prone or the younger gang member will commit or continue to commit gang crimes. This is to be accomplished through effective controls, direct treatment or services, and provision of legitimate opportunities. In our conception, prevention requires change and development both by the individual youth as well as his or her social environment.

Most youth from low income and social problem ridden communities are not involved in delinquent gang activities. Finally, we note that a simple prevention model which emphasizes exclusive concern with younger youth may be unsuccessful. Such a model does not take into consideration system effects, including the extensive socialization effects of older youth on "wannabe" or younger youth. All key components of the problem need to be systematically addressed.

E. Approach to the Problem

Different strategies of suppression and intervention have been identified.

The manuals specify five major lines of action or strategies: *community mobilization, opportunities provision, suppression, social intervention, and organizational change and development.* These strategies must be combined in different ways depending on the problem context, the

specific mission of the organization, and the kind of youth targeted for special attention.

Community mobilization is critically important.

1. Community Mobilization

Community mobilization is a necessary and primary strategy in socially disorganized communities. Social disorganization, which contributes to the development of criminal youth gangs, may be characterized by the inability of legitimate institutions such as home, school, and employment, to adequately socialize youth. It may also be characterized by limited networking among agencies or the fragmentation of criminal justice or community service delivery systems, within and across communities.

Both local and federal interests must be mobilized for the development of collaborative community and interagency activities directed at the control and reduction of the youth gang problem. In times of limited local community resources, agency consortia efforts are essential. These should include the full and productive use of combined local, state and federal resources, application of moral and political pressures, and participation by the local citizenry. (See also General Community Design and Community Mobilization manuals.)

2. Opportunities Provision

The opportunities provision strategy focuses on the importance of education, training, and jobs for high risk gang-prone and gang member youth.

The provision of additional social opportunities, i.e., the development of a variety of targeted educational, training, and employment programs, is the second most important component over the long term for the reduction and prevention of the youth gang problem, particularly in chronic contexts. The schools need to provide remedial and enriched educational programs for gang-prone and hardcore gang youths.

Education, training, and jobs are especially critical for older gang youth still in gangs who are not in school but who are at "positive risk" at a certain point in their social maturation for leaving the gangs, or for decreased participation in criminal gang activity. A key objective of these programs should be developing socially-competent youth, whether in or out of school. (See School and Employment manuals.)

3. Social Intervention

Social intervention is based on an "outreach" and linkage approach of gang youth to the conventional society.

Youth serving agencies and grass-roots community groups must "reach out" and act as a link between gang youth and the conventional world. Staff or adult volunteers of these organizations must develop meaningful relationships with these youth. Community based youth agencies should facilitate access to pertinent opportunity systems and exercise social controls which contribute to the socialization of gang youth. Special efforts are also required to coordinate services for these youth. (See Community Based Youth Agency manual.)

4. Suppression

The strategy of suppression is defined in broad social control terms and requires more than the involvement of criminal justice agencies.

Social control procedures, particularly those of criminal justice, but also of community based agencies, are essential for community protection and the prevention and reduction of the problem. Youth gang suppression involves not only law enforcement but a variety of other agencies and community groups in the targeting, monitoring, supervision, and if necessary, restraint of gang offenders. It also requires the anticipation, prevention, and limitation of the effects of gang crime in particular situations to protect both youth participants and the community.

Criminal justice strategies must also include community mobilization, social intervention, and opportunities provision.

However, arrest, prosecution, imprisonment, and close supervision of gang youth are insufficient unless joined with other community-oriented strategies to achieve long term impact on the problem. This means that community based agencies and local groups must accept and collaborate with criminal justice agencies in patrol, surveillance, and certain information sharing under conditions which protect both youth and the community. Police, prosecution and other criminal justice agencies must develop a variety of social intervention, opportunities, prevention and community involvement programs to supplement their primary goal of suppressing gang crime. (See especially Police, Prosecution and Probation manuals.)

Furthermore, policymakers, administrators and practitioners in the criminal justice system have a special responsibility to withstand pressures from the public and other units of the justice system to carry out an exclusive strategy of

suppression to deal with the youth gang problem.

5. Organizational Change and Development

Organizational development and change focuses on better use of internal agency resources to deal with the youth gang problem.

Finally, the above strategies need to be appropriately organized based on the nature and scope of the problem in the community and the mission of the particular organization. Organizational development and change require better use and reallocation of available resources within agencies and neighborhoods. Common definitions, improved communication, resident involvement and coordination within as well as across agencies and communities are also required.

Both community mobilization and organizational development strategies whether in emerging or chronic gang problem contexts, should be closely interrelated to create efficient and cohesive system arrangements for dealing with the gang problem.

Targeting

Targeting of certain communities, gang, and gang members is necessary to make the best use of limited resources for dealing with the problem.

To conserve resources and most effectively deal with the youth gang problem, it is important to target certain communities, organizational contexts, gangs and gang members or gang-prone youth. Special emphasis on community mobilization is required in both emerging and chronic gang communities. Opportunity provision must also be emphasized for chronic problem communities and contexts.

Neighborhoods and organizations, particularly schools, experiencing serious gang problems, should be priority targets for suppression and intervention efforts. The most serious gang problem youths in the most violent gangs in the highest gang crime rate areas should be targeted first.

High gang crime neighborhoods, certain types of gangs, and gang members should receive priority attention.

Certain youth gangs or gang-like groups clearly committed to violent and serious criminal activity should receive priority attention. This is to avoid unnecessary labelling and widening the net of gang delinquency and crime through inappropriate criminal justice and community based agency attention. It is important to concentrate resources on the heart of the presenting problem.

Also, individual youth should be targeted in the following order of priority purposes:

Key targets of community agency and grassroots attention should be leadership and core gang as well as high risk gang-prone youths.

✓ **first, leadership and core gang youths**--to disrupt gang networks, protect the community, and facilitate the reintegration of these youths through community based or institutional programming into legitimate pursuits;

✓ **second, high risk gang-prone youth who are often younger or aspiring gang members who give clear indication of beginning participation in criminal gang activities** -- to prevent further criminal gang involvement through early intervention, preferably community based services, and

✓ **third, regular and peripheral gang members**--to generally address their needs for control and intervention services.

Finally, a caution! The policies procedures and steps recommended in the manuals should be viewed as promising but as yet not systematically researched through field testing.

F. Overview of the Grassroots Organization Manual

This manual specifically addresses issues for grassroots organizations.

This manual will describe the principles and steps involved in organizing a local neighborhood to confront the youth gang problem. It focuses on the role of the neighborhood organizer, organizer trainer, and local community leader(s) in mobilizing energies, resources and action by parents, local citizens, neighborhood groups, agencies, and concerned officials at the grassroots level. It specifically complements two other technical assistance manuals in this series: *General Community Design* which emphasizes the community design or planning components and *Community Mobilization* which emphasizes the tasks of the more established agencies in the coordination and development of a larger and inclusive network of criminal justice and community-based agencies. Each of the manuals somewhat overlaps the other.

It is important to define neighborhood organizing in respect to the gang problem.

There are eight key elements in organizing the local neighborhood.

Grassroots or neighborhood organizing is a process of empowering local citizens, groups and organizations to address neighborhood problems. Its goals are generally to improve the social living circumstances of local residents, through local efforts and through developing organized capacity to influence decisions and programs by established agencies that affect them. Specifically, the grassroots organization is situated at the point of impact of the youth gang problem and must energize often fearful and ambivalent local citizens to control and reduce the problem. Patterns of neighborhood organizing vary with the scope and seriousness of the gang problem, the extent of local resident and organizational capacities, local organizing traditions, distinctive cultural, racial/ethnic, economic, ecological, and other factors.

This manual identifies the elements and steps of a neighborhood organizing approach to the youth gang problem. (See also Table 1, Appendix C.) The action areas to be covered are:

- II. Problem Recognition
- III. Assessment
- IV. Creating Neighborhood Organization Structures and Processes
- V. Neighborhood Mobilization Program
- VI. Staffing, Staff Selection, and Training
- VII. Funding
- VIII. Research and Evaluation

G. Summary

The Office of Juvenile Justice and Delinquency Prevention, U.S. Justice Department, entered into a cooperative agreement with the School of Social Service Administration, University of Chicago, to conduct the National Youth Gang Suppression and Intervention Program. The scope and seriousness of the problem was analyzed from both an organizational and community perspective. Models or prototypes were developed. Technical Assistance manuals were created which focussed on the implementation of policies and procedures in emerging and chronic gang problem communities and contexts.

The manuals address the gang problem in terms of critical characteristics of the youth gang, its members and the way the problem is defined. Focus is on controlling, reducing, as well as preventing gang-motivated violent and serious criminal youth gang activity. The mission of suppression and intervention is specified as requiring five key strategies: community mobilization, opportunities provision, social intervention, suppression and organizational change and development. Key targets of a program should be gang leaders and core members as well as high risk gang-prone youth. This particular manual focuses on organizing local citizens and groups in a cooperative effort at the point of problem impact.

I.S.

CHAPTER 2

YOUTH GANG MEMBERS AND PAROLE/AFTERCARE SERVICES

- A. Overview of the Parole/Aftercare Manual
- B. Program Development
- C. Summary

A. Overview of the Parole/Aftercare Manual

Parole agencies have an important role to play in controlling and preventing gang problems in the community. Successful parole supervision of gang youths who have spent a period of time in correctional institutions can reduce gang parolee recidivism and the scope and seriousness of a community's gang problem. The parole agency can also play a role in youth gang suppression and social intervention by providing leadership in broader community planning and mobilization of gang control efforts.

While focus of this manual is on youth gang members and the special problems they pose, the approaches, procedures, and policies proposed may also be relevant to other types of youth groups involved in violent and illegal activity. In no way does the special attention indicated for gang youths imply that less attention or services are required for other types of problem youth receiving parole or aftercare supervision service. While the term parole is employed, the guidelines recommended may also be useful for youth gang offenders located in other forms of aftercare programs and community supervision.

The focus in this manual is on state parole/aftercare programs, but it is applicable to parole and community aftercare arrangements under the auspices of departments of corrections, youth authorities, social welfare, children and family services, and probation units. The guidelines are also applicable with appropriate modification for aftercare provided by county and city government and by voluntary service agencies.

The process and principles for developing gang suppression and intervention programs outlined in this manual are general recommendations. Each parole or aftercare agency should design a program to fit its particular gang problem and circumstances. This manual should be an aid in that process.

Youth Gangs and the Parole Mission

Parole responsibilities

Parole agencies have two responsibilities. One is to protect the community by monitoring the behavior of paroled youths to insure that they meet their conditions of parole and avoid renewed criminal activity. The other is to help promote gang youths make a conventional non criminal adjustment in society by providing them with access to community based services and resources that meet their educational, occupational, social, and residential needs.

These responsibilities are difficult to achieve because gang organization, solidarity, and material incentives increase the resistance of gang members to the supervision and behavioral change efforts of parole agencies. Paroled gang youths are likely to violate parole and become re-involved in gang crimes as a consequence. Therefore design and implementation of parole programs are necessary to counter factors associated with gang membership which can defeat effective supervision of these youths.

Purposes and Assumptions of This Document

Purposes of this manual

The purposes of this manual are:

- ✓ the enhancement of the ability of parole agencies and their staff to reduce gang crimes by gang youths;
- ✓ the development of parole services which promote positive behavioral change in gang youths; and
- ✓ the strengthening of linkages between the parole agency, the correctional institution, and other community agencies and groups to achieve more effective suppression and social intervention for youth gang members.

General assumptions for using the strategies

Three assumptions guide the selection and use of these strategies of suppression and intervention.

- ✓ **First**, no single strategy or program works for all youth gang parolees or agencies, but certain combinations of strategies may be effective in controlling the problem.
- ✓ **Second**, promising programs include an appropriate balance of organizational development, community mobilization, social intervention, and opportunities provision strategies along with suppression.
- ✓ **Third**, parole gang suppression and intervention strategies should address three areas:
 - 1) the needs and problems of individual gang youth,
 - 2) internal agency planning and coordination, and
 - 3) community networking between the parole agency and other juvenile/criminal justice agencies, community agencies, and grass-root organizations.

Systematic knowledge of the problem is crucial for program development

B. Program Development

Designing a gang suppression and intervention program within a parole agency should be based on systematic knowledge of the specific characteristics of paroled gang youths, the parole agency, and the community. A mix of strategies and programs should then be designed which addresses those attributes of gang youths, the agency, and community situations which are most significant for controlling and assisting paroled gang youths to curtail and reduce their offending behavior.

To achieve this, a six stage process is recommended for parole agency staff, planners, and administrators (See Figure 1, Appendix C):

There are six stages in program development

- 1) attending to pre-assessment issues;
- 2) assessing and evaluating characteristics of the gang problem, the parole aftercare agency, and the community;
- 3) defining program goals and objectives;
- 4) selecting specific strategies of suppression and intervention and related program activities to achieve objectives;
- 5) implementing the program; and
- 6) evaluating the program and modifying it as needed.

C. Summary

Parole and aftercare agency gang suppression and intervention programs are necessary to counteract problems gang youth parolees present to the supervision process, to protect the community from parolee reinvolvement in gang crime, and to assist the parole gang youth make a conventional adjustment. This manual outlines a six stage process for the design of anti gang parole supervision programs.

CHAPTER 3

Pre-assessment AND ASSESSMENT OF THE GANG PROBLEM

- A. Stage 1: Preassessment Issues
- B. Stage 2: Assessment
- C. Summary

Development of a successful gang suppression program requires agreement among parole administrators and staff that a gang problem exists. It also requires an objective understanding of the specific characteristics of the problem. These can be accomplished by addressing certain pre-assessment issues, followed by assessment of the parole gang problems.

A. Stage 1: Pre-Assessment Issues

Is a Gang Problem Recognized within the Agency?

If agencies fail to recognize the existence of a gang problem or if there are differences of view by staff on the parole agency's responsibility, administrators should undertake exploratory assessment and consensus building as necessary first steps. A variety of techniques can be used for this purpose including:

- ✓ provision of statistics on the number of gang youths under parole supervision,
- ✓ anecdotal summaries of staff experiences in the supervision of gang youths, and
- ✓ administrative and line staff meetings to assess a potential youth gang problem.

Establishing an Assessment and Planning Group

If there is preliminary evidence that a gang problem exists, a committee should be established within the parole agency to conduct and coordinate assessment, goal and objective setting, and strategy planning. This committee should be a working group with access to policy information, records and agency staff. It should include:

- Administrative and staff representation from supervisory units which have responsibility for gang youth parolees should be included.
- Leadership of this group should be assigned to the person(s) most likely to be in charge of program

A gang problem must be recognized to initiate assessment and planning

A problem assessment and planning committee should be established

implementation. (See discussion of "Centralized Administration" below).

- Representatives of other juvenile and criminal justice and community agencies should be consulted or established as a separate group to provide advisory assistance to this planning committee.

This staff assessment and planning group should establish a task agenda and time lines for completing its assessment and making recommendations. Figure 2 in Appendix C provides an example of how this group might be organized.

Establishing Definitions of Youth Gangs, Gang Members, and Behavior

Specific definitions of what a youth gang is, who gang members are, and what comprises gang behavior should be established. This will prevent staff or observers from defining a gang problem when there is none and exaggeration of the gang problem when one is present (e.g. by classifying "law violating" or delinquent youth groups as gangs and their offenses as gang-related). This will help issue that suppression and intervention strategies are related to the actual scope and seriousness of the gang problem.

The definitions of youth gang, gang member, and gang incident outlined in Chapter 1 and elaborated in the glossary can be adopted or modified by the committee. The definitions agreed upon the parole agency should be put in writing and disseminated. These definitions will then help determine the scope and seriousness of the gang problem.

Definitions are essential to assess the problem

B. Stage 2: Assessment

Gang suppression and intervention programs should be developed based on the assessed characteristics of the problem as they affect parole supervision in the particular parole or aftercare agency. Information collected should be reliable, objective, and quantifiable. Where subjective information, such as the opinions of parole personnel and others, is used, it should be validated by comparing the

Establish clarity and consensus on definitions

opinions and observations of as many informants as possible. Information should be collected from within the agency, other agencies, and groups in the community.

Sources of assessment information should include:

Collect reliable and objective information

- ▶ a census of known gang and suspected gang youths under parole supervision;
- ▶ case reports on individual gang parolees;
- ▶ discussions about the gang problem among staff representing all units of the parole agency;
- ▶ special interviews with gang and non gang youths on the nature, scope, and causes of the problem;
- ▶ reports from police, court, probation, correctional institutions, and community agencies on paroled youths who are identified as gang members; and
- ▶ an agency resource inventory of personnel backgrounds and skills, including demographics, parole caseloads, services and facilities relevant or potentially relevant for dealing with the problem.

What to Assess

Information from these sources should be used to assess the paroled gang youths, parole agency, and community gang problem and resource characteristics to deal with it.

1) **Paroled gang youth.** Detailed knowledge on the characteristics of gang youths under parole supervision is essential. Minimally this should include the following:

- ✓ *number of gang youth on parole (current and projected);*
- ✓ *scope and seriousness of offense histories of gang and non-gang parolees;*

- ✓ *personal and social characteristics;*
- ✓ *identification of the personal reasons and bases or causes of the individual youth's original and current gang involvement.*

Parolee data

Number of gang youths on parole. A census of gang youths currently on parole will provide a basis for determining the volume of services, personnel and other resources required for parole gang programs. The larger the percentage of gang youths among the parolee population, the greater will be the need to design a special gang program.

Offense characteristics of gang parolees. The offense histories and patterns of the paroled gang youth population provide guidance on differences in parolee risk for renewed gang offending, particularly for serious offending. High, moderate, and low risk subgroups should be identified as they will require different levels and types of supervision.

The *paroled gang member offense history assessment* should determine:

- ▶ the pattern of offense history (i.e., violent, property crime, drugs, etc.)
- ▶ the seriousness of past offense history
- ▶ history of adjudications and convictions
- ▶ history of parole violations
- ▶ specific gang affiliations of paroled gang members and their membership status (e.g., leaders, core, fringe)

Census of the gang parolee population

Offense history

Personal and social characteristics. These provide a basis for the development of different patterns of social services and opportunities needed by gang youth. They include:

Elements of offense history

- ▶ age
- ▶ sex

*Social characteristics and needs
of gang parolees*

- ▶ race/ethnicity
- ▶ educational attainment and specific educational needs
- ▶ work background and skills, training, and employment needs
- ▶ family structure and support system
- ▶ family income and occupational level

These characteristics should be identified not only for each individual gang parolee, but for the aggregate group of paroled gang youths, and important subgroups. The subgroups should include: the different gangs represented among parolees; younger versus older; parolees with serious versus nonserious offense histories; violent, drug, or mixed offense patterns; and gang youths with special educational, employment, rehabilitation or counseling needs.

The subgroups of paroled gang youths can be prioritized and targeted for differential suppression, social intervention and opportunities provision. Parole agency and community resources should be allocated accordingly.

Individual causes of gang involvement. A variety of personal factors contribute to the parolee's original and current involvement with youth gangs. These may be classified under individual motives and personal social developmental conditions.

Personal motives and social factors leading to gang membership include:

- ▶ striving for social status
- ▶ need for and reinforcement of self esteem
- ▶ material and monetary incentives
- ▶ search for excitement
- ▶ membership resulting from gang coercion

Reasons why parolees have joined gangs

Personal motives or social deficits contribute to gang affiliation

Causes related to deficits in the parolee's personal and social development include:

- ▶ inadequate educational, employment training, and job placement experiences
- ▶ inadequate socialization and support from families

See Table 1, Appendix C for a summary of individual causes of gang involvement. Individual motives and causes of gang involvement should be targeted for suppression and intervention and guide efforts to channel gang youths into alternative legitimate means of satisfying them.

Causes of gang problems arising from distinctive youth population dynamics and the organization of communities should also be assessed. These are reviewed in the Community Assessment section below.

2) Parole agency characteristics. Assessment of the parole aftercare agency is necessary to identify its capacity for and methods of supervising gang youth and to determine where changes are needed. The assessment includes examination of the:

- ▶ agency's past experience in supervising gang youths, and
- ▶ the agency's services and resources.

Experience in supervising gang youths. Assessment of the agency's experience should focus on aspects of the supervision of paroled gang youths which may need to be changed, improved or eliminated. The following questions should be asked.

- ✓ *What is the parole violation and rearrest rate for gang parolees in comparison to those of non-gang parolees?*
- ✓ *Have these rates changed in recent years?*

Agency experience with gang parolees

- ✓ *What special difficulties have been experienced in the parole supervision of gang youths?*
- ✓ *Are gang youth parolees supervised on special caseloads or dispersed across regular caseloads?*
- ✓ *Does any particular pattern of gang member assignment to caseloads seem to produce better results than others?*
- ✓ *Does the agency presently operate special programs and services for gang youths (or parolees in general, e.g., educational, employment, counseling, graduated patterns of supervision based on risk or special needs)?*
- ✓ *Are there certain characteristics of gang parolees (age, gang membership role, education, family, etc.) associated with differences in parole violation and rearrest rates?*

Staff Resources. This part of the assessment should determine the appropriateness and deployment of agency resources to meet the needs of the gang youth supervised by the agency. Questions to be raised include:

Appropriateness of Staff and Services

- ✓ *Are available parole staff, services and other resources compatible with the offense risks and social needs of the paroled gang youth population?*
- ✓ *Do available staff and resources meet the needs for supervision, treatment, and residential care of the different subgroups of the paroled gang youth population?*
- ✓ *Do the supervisory, interpersonal, and professional skills of staff complement the management, behavior control, adult role modeling, and counseling needs of the youth population?*

Assess the nature and deployment of agency resources

Questions regarding staff and staff training

- ✓ *Is there an effective gang training program for staff?*
- ✓ *Is there an appropriate balance or mix of parole supervisory staff in terms of race, ethnicity, and gender?*

Resource Allocation and Deployment

- ✓ *Does the state or county parole authority provide sufficient fiscal, material, expert, and policy support?*
- ✓ *Are staff and resources allocated according to the priority needs in the management, control, and programming of youths?*
- ✓ *Does the pattern of resource deployment overemphasize suppression relative to other strategies of supervision and treatment?*

Assessment of staff and agency resources should identify deficits which may limit the organization's ability to effectively supervise gang youth parolees. The assessment provides a baseline for developing and improving staffing and resource allocation patterns for gang suppression and intervention. Table 2, Appendix C provides a check list of basic agency staff, services and resources which may be required for parole management of gang youths.

Questions regarding the sufficiency of resources

3) Community Assessment. Determination of the community's gang problem and community resources available to deal with it should focus on:

- ✓ the chronic or emerging nature of the community's gang problem
- ✓ the specific characteristics of current gang problem in the community
- ✓ the causes of the community's gang problem
- ✓ the availability of community resources

- ✓ the parole agency's community relations

Elements of the community assessment

While successful parole supervision depends on effective use of agency resources and the skills of the parole counselor in controlling and modifying the youth's behavior, this relationship is influenced by a variety of community conditions. Assessment of these conditions provides direction on 1) what community problems need to be targeted for change and/or taken into account in parolee supervision by the parole aftercare agency and 2) what community resources and relationships need to be developed and coordinated.

Chronic and emerging gang contexts. As indicated above, a *chronic gang context* is one in which gangs commit serious gang crimes and are organized and entrenched in the particular community or neighborhood. Gang values or ideologies are well developed and sophisticated delinquent and criminal opportunities exist. Community services and resources are often insufficient or too fragmented to meet the needs of youths, especially gang members.

Determining community gang problem and resource characteristics

In *emerging or newer gang contexts*, gangs and gang members are relatively fewer in number and less organized than in chronic problem contexts. Gang values and ideologies are not well developed. Resources and services may be available in emerging gang context communities, but may not be effectively delivered to youths at risk for gang involvement.

Different community gang contexts

Differences between chronic and emerging gang contexts impose different limitations on community supervision of gang youths. Answers to the following questions should assist in identifying the nature of the community gang context:

- ✓ How many youth gangs are present?
- ✓ How long have they been active in the community?
- ✓ How many youths are gang members?
- ✓ How well structured or organized are the gangs?
- ✓ Are there identifiable leaders, core members, regular, and fringe members?
- ✓ What is the age composition of gang members?

- ✓ What is the history of gang violence, gang-related trafficking in drugs and contraband, and gang related nuisance problems such as gang dress and colors, loitering, and verbal harassment in the community?

Table 3, in Appendix C suggests summary differences between chronic and emerging gang contexts based on answers to these questions. Mixed patterns may exist indicating that contexts may be changing from one form to another.

Current gang problems. The intensity, scope, types, and patterns of gang problems and offending in the community can vary over time. The assessment should take into consideration the current nature and seriousness of gang activity and changes which occur because this will determine the level of opportunities and pressures for reinvolvement in gang crime by parolees. Assessment should identify:

- ✓ what the specific community gang crime problem is
- ✓ the organizational characteristics of the gang(s) involved
- ✓ the demographics of the gang youths involved
- ✓ who or what are the victims or targets of the gang problem
- ✓ what purposes/motives does the problem serve for the gang

Key questions to determine the type of context

Identifying the current patterns of gang activity

Table 4 in Appendix C provides examples of some current gang problem characteristics. This table used in conjunction with Table 3, should enable the parole agency to develop a profile of gang problems confronting the community. Use this profile to guide the design and management of parole gang suppression and intervention programs for the particular gang problems in that community. For example, current drug problems in chronic problem communities versus current problems of gang fighting over turf in

emerging problem communities require different program strategies.

Causes of gang problems in the community. Direct and indirect causes of gang problems in the community are listed in Table 1, Appendix C along with causes of individual causes of youth gang membership. Community sources of gang activity include problems within the community's youth gang population such as competition over gang status, turf rivalry, membership recruitment, competition between different gangs over control of illegal activities, and intra-gang leadership conflict.

More basic and indirect community causes of gang problems include changes in the community's population, racial and ethnic conflict, weak adult leadership, schools and neighborhoods with insufficient or inappropriate resources and programs for dealing with gang prone youths, and an abundance of illegitimate opportunities.

Assessment of these direct and indirect causes of gang problems in the community enables identification of youth population and community wide characteristics which should be considered as targets for intervention and/or taken into consideration in planning suppression and social intervention for individual gang parolees.

Determining possible community causes of gang activity

Community resources. Communities differ in the extent to which basic educational, job training and employment opportunities, recreational and other social services are available to gang members or youths at risk for gang membership. These are more likely to be lacking or of poor quality in chronic, then emerging problem communities. Where community resources are absent or poor, the agency must network with existing community organizations and government to reallocate or develop appropriate resources. Even when community resources are to some extent available, the parole agency assessment should determine two things:

- ✓ Is there parolee access to these services and resources?
- ✓ If services and resources are available and linkage to gang youths exists, are they useful and effective

in reintegrating gang parolees into the conventional life of the community?

Where access and linkages to resources for paroled youths are absent or weak, developing them should be a priority of the parole agency.

Assessing the nature and extent of community resources

Table 2 in Appendix C provides a brief checklist for community resource assessment.

Parole agency community relations. Success in supervision of gang youths depends on effective parole agency relationships or networking with community agencies. The parole agency must assess its current relationships and resource exchange patterns with other criminal justice agencies, community agencies, and citizen and grass roots organizations. Questions that should be raised include:

- ✓ How much resource sharing and collaboration have characterized the relationships?
- ✓ What more needs to be done to improve inter-agency networking to facilitate the parole agency's gang suppression and intervention program?

Assessment Summary

A summary of the dimensions of the parole agency's and the community's gang problem should be made from information gathered in the assessment. The implications of the assessment analysis should be carefully thought through to develop a rationale for development of program goals, objectives, and strategies. The summary statement should be guided by the following questions and issues.

Assessing community relations

1) Extent and Seriousness of the gang problem. If gang youths are already under the supervision of the parole agency, special attention (or more attention) should be directed to these youths, particularly if they are presenting gang problems of a serious nature. If gang youths do not appear to present special gang-related difficulties, a policy of routinely identifying gang youths on parole and monitoring their parole adjustment would be appropriate.¹

Key elements of the assessment should be summarized with implications for strategy selection

Furthermore, the larger the number of gang youths on parole supervision, the more serious their offense histories, the more organized their gangs, the more chronic the gang community context, and the more serious the current gang problem in the community, the more extensive is the agency's task in developing special programs to control gang parolees and prevention of their recidivism.

Implications for planning. Agencies with parolee gang problems and/or serving emerging or chronic gang communities:

- ✓ may require specialized gang units and/or gang specialists within their organization to advise regular staff;
- ✓ must develop or participate in a system of networking with criminal justice and other community based organizations;
- ✓ should make prioritized and comprehensive use of the five general strategies of suppression and intervention.

Determining the nature and extent of the gang parole problem

2) Resource deficits and needs. Improvement in the adequacy and appropriateness of resources must be given priority, particularly in institutions with the most serious gang situations. More resources are probably needed to initiate large scale gang suppression and intervention activities. In resource poor institutions, better use and deployment of available resources can, within limits, improve staff's ability to contain if not reduce gang problems.

3) Targets for gang youth parole supervision. Special supervision programs for gang parolees should address specific behaviors and conditions which make supervision of these youth difficult. Using information obtained in the assessment, targets should be prioritized and selected from the following:

- ▶ violent and criminal behaviors of gang members;

- ▶ those organizational characteristics of the gang which contribute to its cohesion; and
- ▶ the specific causes of the gang problem.

Resource requirements

A rationale for a special gang parolee supervision program should be developed based on the relationships observed among the targeted gang problems, their underlying individual and community causes, and agency potential for affecting these relationships. This rationale and list of prioritized targets provide the basis for defining goals and objectives for the program.

C. Summary

Targets and rationales for program development

The development of a parole gang suppression and intervention program requires staff agreement that a gang problem exist. Creation of a staff assessment team and preliminary consensus on definitions of gangs, gang members, and gang behavior are necessary. The assessment should determine the characteristics of the current problem, whether it is chronic or emerging, the specific characteristics of the parolee youth gang members and their gangs, and available resources and staff requirements. The interrelation of the assessment elements determines the basis for design and implementation of the parole gang suppression and intervention program.

CHAPTER 4

DESIGNING AND IMPLEMENTING THE GANG PROGRAM

- A. Stage 3: Action Plan Objectives
- B. Stage 4: Selecting and Operationalizing Strategies
- C. Stage 5: Program Implementation
- D. Summary

Goals and objectives for the gang program must be established based on assessment conclusions. A balanced and appropriate set of strategies of suppression and intervention should be selected to achieve goals and objectives. Detailed planning and implementation should be carried out by a gang coordination group.

A. Stage 3: Action Plan Objectives

The responsibilities of parole/aftercare agencies are to protect the community from crime and to assist paroled youth make conventional adjustments. Long and short range objectives to achieve these goals must be established and should be defined in accordance with the program rationale and prioritized list of suppression and intervention targets. This set of specific long and short range objectives will guide the gang suppression and intervention program's activities.

Long range objectives to be established should include the following elements:

- 1) the specific prioritized behaviors or problems which require control;

- 2) the specific individual gang member, agency and/or community causes which will be targeted;
- 3) the relevant agency programs, strategies, and activities which will be used to address the targeted behaviors and problem causes;
- 4) the specific manageable results or percentage reduction of the problem to be achieved; and
- 5) the parole aftercare goal that will be met by the objective.

Long range objectives should be time limited and defined for achievement within one to three years. An example of a long range objective is provided in Table 5, Appendix C.

Next, the short range objectives implied by each long range objective should be developed. Short range objectives are the activities which lead to the achievement of longer range objectives. Sample short range objectives implied by the long range objective example in Table 5, Appendix C are also listed in that table.

Establish specific goals and objectives to guide the program

The sequence of steps involved in developing long and short range objectives is illustrated in Figure 3, Appendix C.

B. Stage 4: Selecting and Operationalizing Strategies

Strategies of gang suppression and intervention must be selected and integrally related to program objectives. The five categories of strategies from which selections can be made are: organizational development and change, community organization (mobilization and networking²), suppression, opportunities provision, and social intervention. We believe organizational development and change and community organization are the most important classes of strategies for parole programming. They require well coordinated parole agency planning, resource advocacy, and networking with other criminal justice and community agencies in regard to the youth gang problem. They make possible successful use of the suppression, opportunities provision, and social intervention strategies

Construction of long range objectives

1) Organizational Development and Change

Organizational development and change involves: 1) the creation of mechanisms, policies, and procedures for administrative control and coordination, 2) the recruitment, training, and allocation of staff and space to carry out the program, and 3) the systematic use of information or intelligence about youths to guide gang suppression and social intervention processes. Components of an organizational development and change strategy include the following:

Short range objectives must be made explicit

- **Centralized Administration and Coordination** must insure that a consistent approach is implemented. As indicated above, a high level administrative committee of the parole agency must be assigned initial responsibility for assessment and the general design of the program. However, implementation and day-to-day coordination of the program can be assigned to a gang operations coordination unit. The various parole supervision units can implement their respective gang suppression and intervention responsibilities, but overall integration and oversight should be the responsibility of the coordinating unit. See Figure 4 in Appendix C for examples of how the coordinating unit might be structured.
- **Special or Regular Caseloads** can be used to supervise paroled gang youths. Assigning gang youths to specialized caseloads or to a few specialized parole counselors has certain advantages. Specialized gang caseload personnel are able to develop information, coordinate strategies of suppression and intervention and implement programs most efficiently. They enable parole counselors to develop maximum expertise in the use of community resources and services for gang youth parolees.

The relation of program objectives to strategies

On the other hand, the dispersal of gang youths across general caseloads of gang and non-gang youths reduces frustration and tedium that difficult gang cases can present. An intermediate caseload supervision pattern could utilize smaller specialized caseloads for the most difficult gang youths and general caseload assignment

Organizational development

for less serious gang youths. In the final analysis, selection of caseload pattern depends on the scope of the agency's gang parolee problem and available resources.

Establish a centralized coordinating unit

- **Intelligence and Evaluation** are critical organizational functions to be developed. Staff knowledge of potential and existing gang problems among parolees and in the community is necessary to proactively respond and minimize disruptive effects on the parolee or the community. A parole agency gang intelligence system should be developed which requires staff reporting of gang events and rumors, formal and informal input from youths and staff, and reliable information from other agencies to a central parole agency source for analysis and planning purposes.

In less serious or emerging gang problem contexts coordination of intelligence can be assigned to the parole/aftercare gang intelligence officer who should establish liaison with representatives of correctional institutions and community agencies.

Developing a caseload management strategy

In serious and chronic gang problem contexts agency intelligence will be enhanced by participation in a formal multi-agency intelligence network. An interagency committee should coordinate the intelligence network.

Only selected reliable information of community impact should ordinarily be exchanged. Policies and procedures must be established: for what information can be shared; to insure that gang intelligence is shared in a timely fashion; to safeguard due process rights of youth; and to prevent compromise of legal and treatment obligations of agencies (see Rapp, et al. 1989 for helpful suggestions).

In addition, information must be systematically collected on the program processes as a basis for evaluation of suppression and intervention strategies. Evaluation provides feedback on the nature and impact

of the program and on the extent to which objectives are being met (See Stage 6: Evaluation below).

Intelligence and monitoring gang problems as well as program evaluation are essential

- **Gang Activity Policies.** The parole agency's stance on problem behaviors by paroled gang youths and how they will be managed should be described in a set of gang specific policies and communicated to staff and gang parolees. Policies should prohibit criminal gang behaviors and define specific disciplinary and parole revocation responses for such acts. The more serious the gang problem, the more explicit and detailed gang policies should be.
- **Staff Recruitment and Training.** Sufficient numbers of qualified staff must be recruited and trained for a variety of staff functions including parole supervision, administration, program evaluation, job development, and community organization. Recruitment of racial and ethnic minority staff should be a priority. Care should be taken that in all positions and levels of operations, a multi racial/ethnic staff is present.

Parole counselors should respect and establish rapport with gang youth, possess high standards of professionalism, and not be easily intimidated. They should have a working knowledge of gangs, minority cultures and behavioral patterns, street culture, and issues which affect youths' adaptation to parole. A staff training program should be developed which enhances and develops these staff attributes.

- **Community Volunteers.** Community volunteers should be recruited and trained to provide mentoring, tutorial, recreational, and other services to augment professional and full time staff. These volunteers should be selected to serve as role models and facilitate the community re-integration of gang youths.
- **Planning with Parent Parole Agency and Other Criminal Justice Agencies.** The parole agency should be involved from the start with its state or county department of corrections or parole in planning to deal with the particular agency's gang problem. The agency

Explicit policies on gang behavior are necessary

must mobilize policy support and extract a promise of additional appropriate resources before the program design is fully developed and implemented. Early and ongoing coordination and consultation with other juvenile justice agencies, especially juvenile release and parole authorities, are also essential to prevent later policy conflicts.

2) Community Mobilization

This strategy involves reaching out to governmental agencies and local community organizations to support and reinforce the parole gang suppression and intervention program. Communication and relationships should be established with specific police, probation, parole, court, community service agencies, and grassroots groups in the targeted gang problem communities.

Qualified staff should be recruited and developed

It is important to recognize that other agencies may have expectations of the parole agency role that differ from those of parole staff. Also parole staff may have expectations of other agencies that their staff do not share. These may result from political differences, competition over resources, and resistance to infringement on agency domains of authority. Successful mobilization of community gang programs require that these differences are openly confronted and resolved in a climate of good will.

The following types of networking activities should be developed.

Community volunteers are valuable resources

- **Case Management Continuum.** Agency networking should involve collaborative case planning for the security and protection of the community and the security and social service needs of individual gang youth. It is particularly important to obtain information and collaborate with correctional institutions as well as probation and aftercare staffs of other community agencies, since paroled gang youths are often known to them. Coordinated agency efforts are required to ensure continuity of case supervision, the provision of comprehensive services and opportunities (to the extent resources permit), and the minimization of overlap or duplication.

Involve other juvenile and criminal justice agencies in planning

Establish formal and informal linkages in the community

Continuity of supervision and services

Collaborative case planning between parole/aftercare and institutional staffs should be a standard and systematic procedure.

- a. It should be guided by a set of explicit guidelines identifying the tasks and requirements of both sets of staff, e.g., responsibilities for pre release preparation for youths, the nature and timing of parole/aftercare staff planning visits with the youths approaching release, and development of a written release plan.
- b. Pre release planning should be guided by a standard but realistic risk and treatment/service assessment to determine the extent of each youth's gang problem, risk for reinvolvement in gang and other criminal activity, and social service needs (See Exhibits 1 and 2, Appendix C). These standards should be used to plan a level of aftercare supervision, opportunities provision, and social service intervention required to assist the youth in making a conventional adjustment in the community. Each correctional institution, parole/aftercare agency and their parent agency should devise or adopt assessment instruments for use in collaborative case planning. (See Needs and risk assessment discussion under the Social Intervention strategy section; see also Altschuler and Armstrong (1990), listed in the Bibliography, for a discussion of the importance of a strong continuum of institutional and aftercare collaboration.)

- **Educational, Employment, and Social Services Networking.** Education, employment, and social services are key to any promising program of youth gang suppression and intervention. These are discussed in greater detail below in the Opportunities Provision and Social Intervention sections, but are also commented on here since the effective development of these strategies depends on community organization and networking.

To develop these services:

- ✓ Public school authorities, public and private employment training and placement organizations, private sector businesses and associations, youth service agencies (i.e., Boys and Girls Club, YMCA's, and so on), and other remedial service agencies should be consulted.
- ✓ They should be engaged through formal agreements, if possible, to provide the range of services needed by paroled gang youths to promote their adjustment in the community.
- ✓ Incentives for interagency collaboration should include appeals to "public spiritedness", fulfillment of moral obligations or legal responsibilities, and financial incentives, e.g., tax breaks.
- ✓ Since many community based agencies and organizations will be ambivalent or fearful, special efforts will be required by the parole counselor and parole agency administrator to orient and support community agencies in their work with gang offenders. Case conferences and collaborative staff training would be useful.

Standardized case planning

Assessment instrument needed

3) Suppression

Sanctions, penalties, and other control tactics should be used to prevent and deal with negative gang behavior by parolees. Suppression involves the exercise of the legally authorized coercive powers of the parole agency in conjunction with those of police, courts, county prosecutors, juvenile release and parole authorities. Because the coercive powers of parole agencies are more limited than those of other juvenile and criminal justice agencies, effective parole suppression requires extensive collaboration with those agencies.

A requirement for suppression is the identification of parolees who are gang members or parolees at risk for gang membership.

Networking with community agencies and resource providers on behalf of individual gang youth

Interagency agreements for provision of education, employment and social services

Suppression approaches for gang youth

- A procedure should be established to identify gang members among paroled youths. This procedure should minimumly rely on at least three of the following:
 - ✓ parolee admission of gang membership
 - ✓ documented membership in probations, court, or corrections case records
 - ✓ reliable documented membership in police gang files
 - ✓ reliable supervisory information that the parolee wears gang colors
 - ✓ reliable supervisory information that the parolee associates with gang members

Examples of suppression strategies and tactics which can be employed for various supervisory situations are summarized below.

- **Conditions of parole**

Develop and recommend to the parole or release authority specific restraints on activities for each gang parolee as conditions of parole, e.g., non-association with active gang members, wearing gang attire, avoidance of situations where gang activity is likely to occur. Violation of those constraints could result in parole revocation.

Also recommend parolee participation in appropriate social intervention and opportunities provision activities as conditions of parole based on pre release planning with the youth.

- **Control of situational crises**

Make standing arrangements with county juvenile detention and municipal holding facilities for temporary detention of gang youth with cause for particular acts of gang criminality and activity.

Warnings should be issued to gang parolees to avoid specific gang crisis situations in the community.

Mediation techniques should be used in collaboration with police and community gang programs, to intervene between gangs in conflict, particularly those in which significant numbers of parolees are members.

■ **General gang problem behavior and rule violations**

Clearly communicate both in writing and orally conditions of parole to parolees, especially undesired gang behaviors with specific penalties for their occurrence.

Use a graduated system of structured parole supervision for high risk gang youths, in which parole contacts and conditions are adjusted or reduced depending on behavior.

Firmly administer parole revocation policies.

Make unscheduled visits as appropriate to parolees' home, school, employment, and recreational sites to monitor adjustment.

Consult frequently with parolee's family, teachers, employer, and friends by phone.

Seek prosecution of gang youths if serious criminal acts are committed by them.

Pay special attention to leadership and core gang members.

Develop a pattern of special monitoring and information sharing with the police and county prosecutor regarding serious gang offender parolees.

■ **Due process**

Develop explicit grievance procedures for parolees.

Special conditions of parole

Identify other areas and issues in which due process protections are important and assist in their development.

Arrangements for crisis control

Implement policy and procedures for formal parole revocation hearings.

4) Social Intervention

Parole officers should promote the personal and social growth of gang youth toward conventional behavior through the following strategies.

- **Needs and risk assessment.** Each youth should be assessed not only for his risk of continued gang involvement and serious criminal behavior, but for his social, economic, educational, vocational, residential, health, mental, and dental needs.

A standardized assessment and classification protocol should be adopted or developed for this purpose. Examples of risk and needs assessment instruments can be found as Exhibits 1 and 2 in Appendix C. These instruments should contribute to collaborative case planning on behalf of parolees with correctional institutions and other community service agencies (see discussion of Case Management Continuum under Community Mobilization.)

The assessment should be used to develop an individualized suppression and a social intervention plan involving the participation of each gang youth to the extent possible.

Frequent review of progress and accountability in implementation of the plan and updating the plan with the parolee must be a part of the process.

- **Individual services.** The parolee should have access to the following individual services as needed:
 - ✓ Personal counseling for:

Special procedures on holding parolees accountable

The constitutional rights of the parolee should be respected.

Social intervention should promote the positive social development of gang youth

Each youth's needs and risks should be assessed

- 1) value and behavioral change, and developing rational and responsible thinking;
 - 2) educational and vocational planning and monitoring;
 - 3) collaborative planning between the parole and institutional counselors for effective reintegration into the community upon the youth's release from corrections.
- ✓ Family counseling which focuses on the gang youth's relationships with family members which may affect the youth's parole adjustment.
 - ✓ Medical and dental referral for physical and mental problems.
 - ✓ Crisis intervention around personal and gang related problems.
 - ✓ Advocacy and linkage on behalf of the parolee with other community agencies
- **Group Services.** Depending on the need of the youth, the following types of group oriented services should be provided:
 - ✓ Counter-gang culture classes which stress the negatives of gang membership and ways of dealing with gang pressures.
 - ✓ Social group counseling around such topics as alcohol and illicit drug use, responsible dating and marriage, education, job and career development.
 - ✓ Referral to recreational programs which are structured, supervised, and provide opportunities for positive teamwork among youths.
 - **Residential placement.** The needs of parolees for adequate living accommodations should be met through:

Services for individual gang parolees

- ✓ Placement of paroled gang youths in their parent or family homes is preferable. Realistic preparation of parents for the youths return should be provided. The home situation and parent and gang member relationships should be specifically monitored. Parents or family should be referred to support services as needed.
- ✓ Permanent residential or group home placements are required for those who cannot be placed in or returned to their families' homes.
- ✓ Temporary emergency residential placement options for gang parolees experiencing difficult living arrangements at home or in the community.
- ✓ Placements in other communities for gang parolees who do not wish to or cannot be placed in their home community is an important option.
- ✓ Placements for youth who require independent living arrangements.

5) Opportunities provision

Gang parolees should be helped to acquire the academic, job, and social skills necessary for conventional adaptation and success. While some of these essential opportunities can be provided directly by the parole or aftercare agency, most will have to be accessed through arrangements with education and training organizations, community agencies, and businesses. Community development and networking efforts by parole supervisors, as discussed earlier, are critical in this regard. Programs which provide basic opportunities include the following:

Group social interventions for gang parolees

- **Education.** Parole agency staff should collaborate with public, private, and not-for-profit educational or vocational agencies, local colleges and universities, and state, county, and municipal authorities so that:

Provision of adequate living arrangements is important

- ✓ Academic programs target specific learning deficits of parolees, particularly in reading and math.
- ✓ Programs are developed that address both the terminal academic needs (return to high school or complete a GED) and the more specialized educational and vocational needs of older youths.
- ✓ Volunteer mentors and tutors are used to augment these educational opportunities as well as provide enrichment experiences and role modeling.
- **Job Training and Placement.** The private sector, including business and industry, as well as the public sector, should be lobbied or involved through tax and other incentives to provide job training and placement. Job training and placement services should emphasize:
 - ✓ job and career orientation, job application skills, and apprenticeship programs;
 - ✓ job aptitude assessment and counseling as well as training in specific occupational settings; and
 - ✓ creation of a job bank, referral, and placement system in collaboration with correctional institutions and community agencies specifically directed to the needs and problems of gang youths.

The parole agency should be prepared to subsidize or contract with community agencies for particular educational and employment services for gang parolees.

Selecting and Balancing Strategies

These strategies and related program activities should be selected and combined to maximize benefits and to minimize negative side effects for each parolee and the community in which he resides. Several issues should be considered.

1) Balancing Strategies. The relative emphasis placed on suppression, social intervention, and opportunities provision

Access to social opportunities is essential for conventional parole adjustment

should be varied by stage of parole adjustment of each youth. In the initial parole period, when problems in social adjustment are most likely to occur, suppression strategies should usually be emphasized. During periods of crisis or serious problems, gang youths should be closely monitored as to how services and opportunities are used.

Remedial education is usually necessary

2) Minimizing Side Effects of Strategies. Many of the strategies suggested may have negative side effects for particular youth and situations. Anticipation of and controlling such consequences are important. One example, is the placement of a gang member in an academic or job training program where other youths of an opposing gang are present. The potential for disruption will be minimized if clear rules of conduct are established and if all concerned, i.e., teachers, staff, and employment personnel, are prepared and understand what to do in case problems arise. Appropriate monitoring, support, and intervention by the parole officer are important.

A second example is when the parole supervisor's objective is to weaken youth gang organization in order to control gang problems in the community. One strategy might be to remove a gang leader parolee from the community, however the following questions should be raised:

- ✓ Will new gang leadership emerge?
- ✓ Will the resulting gang organization become even more problematic?
- ✓ Would other strategies and tactics weaken gang organization with less problematic side effects?

Work attitude/skills training and jobs are essential

Placement of the gang leader parolee in a well monitored job that keeps him away from the gang, while encouraging a community youth agency to neutralize potential leaders from taking over, could be an option.

C. Stage 5: Program Implementation

Gang Coordinating Unit.

After the administrative assessment committee has developed the general plan or parolee program outline, a permanent

Strategies should be balanced according to the cycle of gang youth adjustment

Adjust strategies according parole progress

Negative side effects of strategies should be calculated

gang coordinating unit should be established. The coordinating unit will be responsible for ongoing, overall development and implementation of the parole anti-gang policy and program, coordination of internal units, and for overall parole agency efforts with other major jurisdiction-wide agencies concerned with the problem. Key leadership of the assessment committee should comprise the coordinating unit. In a larger parole organization, the coordinating unit should be comprised of an administrator, gang intelligence specialist, program evaluator, juvenile/criminal justice liaisons specialist, and gang training specialist. In a smaller organization, the functions of these staff can be combined. Position descriptions are as follows:

- **Unit Administrator:** responsible for overall function of the unit.
- **Gang Intelligence Specialist:** responsible for development, management, dissemination and coordination of intelligence among all agency staff, other criminal justice and community agencies.
- **Program Evaluator:** responsible for data collection and analysis of program process and results.
- **Criminal Justice Liaison Specialist:** responsible for developing and monitoring gang suppression and intervention policy and program with other juvenile and criminal justice agencies, i.e., police, county prosecutor, parole and release authorities, detention centers, etc.
- **Gang Training Specialist:** responsible for development of a gang curriculum, implementing staff knowledge development activities in respect to gang suppression and intervention.

See Figure 4 in Appendix C for examples of organizing and integrating the coordinating unit and parole supervision staff.

Funding.

All parole aftercare agencies can implement some or most components of gang suppression and intervention programs

without additional funding through reallocation of their existing resources. However, those parole and aftercare agency with serious gang parolee problem and/or in chronic gang communities may require additional funding to implement their programs.

- **Reallocation of existing resources.** Many aspects of the designed gang suppression and intervention program can be implemented without additional funds and resources. They can be implemented with limited modification of agency policy, reallocation of staff, and additional collaboration with other agencies.

For example: 1) community areas in which paroled gang youths are most likely to become involved in gang problems can be addressed through realignment of parole staff monitoring in those areas; 2) gang related behaviors that are violations of parole can be discouraged by adding them to established parole revocation policies; 3) parole counselors should systematically address gang membership and behavior in pre release planning and community counseling as part of their established patterns of work with youths; 4) increased emphasis can be placed on developing appropriate academic and job services for gang parolees with educational and business interests; and 5) networking can be used to tap into services and information routinely managed by other agencies at the state and local level, i.e., intelligence sharing, training and employment opportunities, special education, medical, and dental services. Special efforts can be devoted to working with existing local educational and vocational programs to assist in structuring services to identify and remediate deficits of youths which contribute to their gang involvement.

Parole agencies should objectively determine to the extent possible whether their and services and resources and those of community agencies are being put to their best use. Reallocation and of services and resources to better match the needs and problems of gang youths can reduce the need for additional funding.

- **New funding.**

Staffing the gang coordination unit

Additional funding is sometimes required to implement parole gang suppression and intervention programs. These include agencies whose resources are already limited and where the gang problem is chronic and serious.

Sources of such funding include: 1) parent authority of the parole agency, i.e., state or local department of corrections/parole, youth services, children and family services, 2) state departments of vocational rehabilitation, education, and substance abuse, 3) federal agencies, i.e., Departments of Justice, Health and Human Services, Education, and Labor 4) non profit foundations and charitable organizations, as well as 5) private for profit businesses and commercial associations.

New gang and drug initiatives of federal and state governments may be suitable funding frameworks for addressing some kinds of gang problems and needs in particular parole agencies and communities.

A key issue is the need to shape the proposal in terms that are relevant to the interests of the potential funder. For example, support for educational and vocational components of gang programs may be receptive to governmental agencies with educational and labor interests.

Program funding and resource allocation

Develop the specifics of the program.

Detailed planning for implementation of the program should be undertaken. Gang parolee supervision standards, caseload management systems, i.e., special gang or dispersed caseloads, and systems for resource development and risk classification. This involves the development of a special gang member risk/needs assessment instrument as suggested above and a set of criteria for the development of education, employment, and other social services particularly relevant for parole counselors dealing with gang youth. These should be elaborated the basic program design.

The plans and instruments developed should be reviewed and modified through the parole agency's gang coordinating unit

with final approval by the chief administrator. Ongoing decisions will be required for parole program modification of procedures, elimination of certain activities and replacement with others, based on changes in strategies and objectives.

C. Summary

Program goals and objectives provide direction for the development of the parole gang suppression and intervention program. they specify what characteristics and conditions of the problem will be addressed, how, and over what period of time. Strategies of suppression and intervention appropriate for each objective are selected and used to provide the framework of the program. This design should then be implemented by the gang coordination unit and the various parole supervision units.

Detailed planning and implementation

CHAPTER 5

MONITORING AND EVALUATION

A. Stage 6: Monitoring and Evaluation

B. Summary

Continual monitoring and periodic evaluation of the program are important administrative functions. They enable appropriate oversight and timely modification of program elements based on objective knowledge of what is and is not working.

A. STAGE 6: MONITORING AND EVALUATION

The gang supervision program must be monitored to insure that it is implemented and operating as designed.

Appropriate changes and modifications in goals, objectives, and strategies should be made as needed. In addition, evaluation must be conducted to determine the extent to which program goals and long and short range objectives are being met. Evaluation requires assessment of both *process outcomes* and *end results* of the program.

Process outcomes are indicators of program operations, activities, strategies, and resources used to address and change the problems of gang parolees. Examples include:

- ✓ Types of caseloads, i.e., regular or special, used to supervise different kinds of parolees, as well as caseload sizes;

- ✓ the match of parolee risk for renewed gang involvement to appropriate levels of supervision;
- ✓ the number of counseling contacts with parolees; and
- ✓ the appropriateness of academic and employment services provided and used to assess academic and employment needs of parolees.

End results are what the process outcomes achieve. For example, end results for parolees may include:

- ✓ number of problem interventions by the parole counselor during parole;
- ✓ number of arrests during parole;
- ✓ parole status terminations:
revocation/conviction on new offense/discharge from parole;
- ✓ time between beginning and ending parole;
- ✓ changes in academic achievement scores while on parole;
- ✓ completion of job training program;
- ✓ success in job placement; and
- ✓ extent and patterns of continued gang involvement among gang parolees.

Data on process outcomes and end results should be collected in standardized format on a regular basis. During the initial stage of program operations, monitoring and evaluation should be directed at progress in program implementation and achievement of short range goals. Over the longer term, evaluation of both process outcomes and end results provides a basis for making major policy and

program changes and determining which strategies of suppression and intervention are effective.

C. Summary

Gang suppression and intervention programs require constant monitoring to insure that operations are going according to design and to identify aspects of the program which should be modified. Evaluation is required to verify that desired effects and longer range objectives of the program are being achieved. Evaluation also provides a basis for modifying the basic approach or strategy to improve result in gang parolee control.

Program monitoring and evaluation are vital components of the approach

Process Outcomes

End results

FOOTNOTES

1. Some authorities argue that if gang youths present no special or unique problems to parole or institutional supervision, no special attention should be devoted to those youths, since attention to gang affiliation can create problems. This position can be challenged: First gang membership is often part of the criminal identity of the youths, and control or change of that identity requires acknowledgement of that membership. Second, policies aimed at identifying and monitoring gang youths do not have to stimulate gang problems if they are managed without fanfare and with concern for both the youths' and the community's protection and welfare. Third, some agencies deny the existence of gang problems when in fact they are present. Therefore, they need to acknowledge the problem since it may worsen with neglect.

2. For purposes of developing gang suppression and intervention programs two types of community level efforts can be distinguished. One form involves the efforts of the parole agency to identify, develop, and use other community organizations and resources to enhance supervision for individual gang youth parolees. This is *agency-oriented networking*. The other form is *community organization* and involves the active collaboration of several agencies, including parole, to plan and carry out coordinated efforts to address the more general community gang problem.

Ideally, the parole agency should promote both specific agency-oriented community networking and broader multi-agency community organization. The discussion presented here primarily focuses on parole agency community-oriented networking to support the supervision of these youths. While suggestions are also provided for parole involvement in multi-agency community organization, the reader is referred to the *Community Organization and General Community Design Technical Assistance Manuals* for a fuller development of steps to complement the larger community problem-solving effort in regard to gangs.

BIBLIOGRAPHY

Alschuler, David M. and Troy L. Armstrong (1990). Intensive Community-Based Aftercare Programs: Asssment Report, Institute for Policy Studies, Johns Hopkins University for the Office of Juvenile Justice and Delinquency Prevention, U.S. Department of Justice (November).

Rapp, James A., Ronald D. Stephens, and Donna Clontz. 1989. The Need to Know: Juvenile Record Sharing. National School Safety Center (Pepperdine University and the U.S. Departments of Justice and Education).

APPENDIX C
FIGURES, TABLES, AND EXHIBITS

FIGURE 1. STAGES IN DESIGNING A PAROLE GANG SUPPRESSION AND INTERVENTION PROGRAM

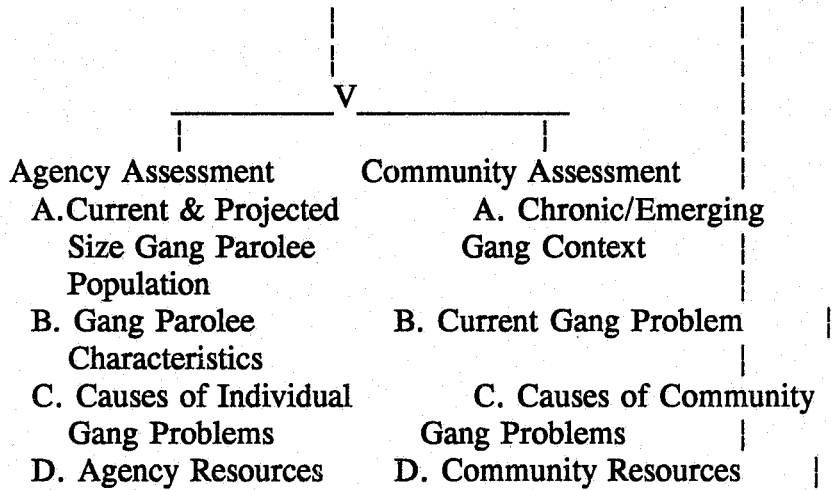
Stage 1.

PRE-ASSESSMENT ISSUES



Stage 2.

ASSESSMENT



Stage 3.

> DEFINE OBJECTIVES <

Short and Long Range



Stage 4.

DEFINE STRATEGIES



A. Organizational Development and Community Networking



B. Suppression, Opportunities Provision, and Social Intervention



Stage 5.

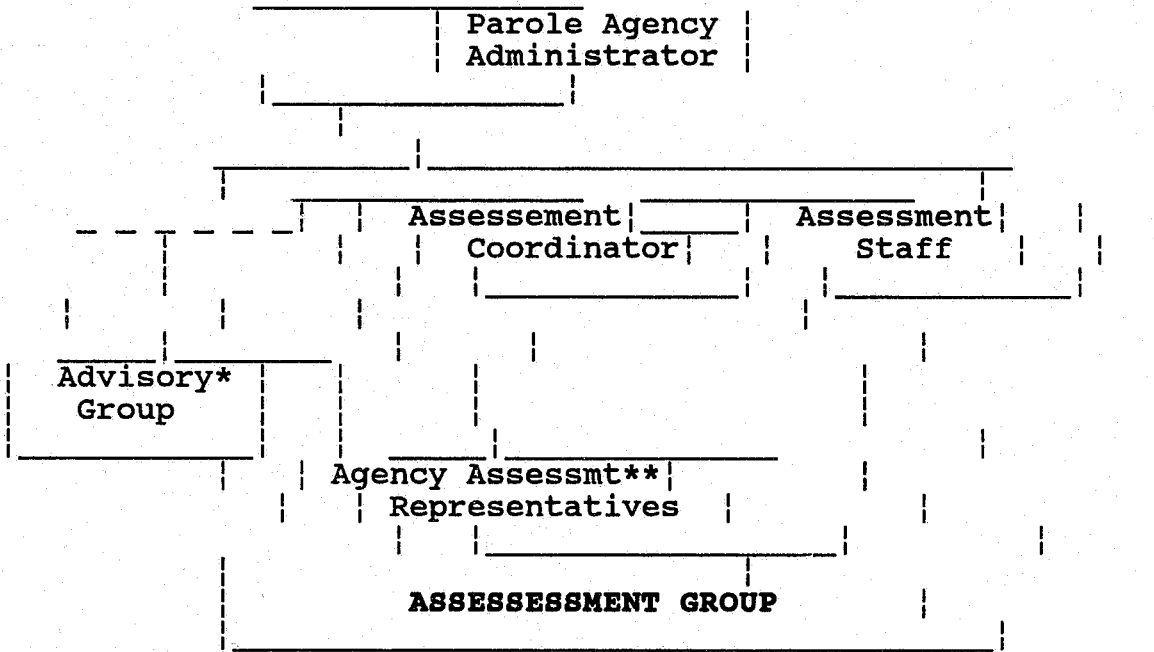
IMPLEMENTATION



Stage 6.

EVALUATION & PROGRAM MODIFICATION

FIGURE 2. PAROLE ASSESSMENT AND PLANNING COMMITTEE ORGANIZATION EXAMPLE



**** Advisory Group might include:**

- Youth discharged from parole
- Police representatives
- Court representatives
- Corrections representatives
- Community service and grassroots organization representatives

***** Agency Representatives might include:**

- Parole supervisors
- Parole counselors
- Parole risk/needs assessment staff
- Parole resource developmt staff
(i.e., education, jobs)
- Community parole service providers
(i.e., group homes, substance abuse, etc.)

FIGURE 3. STEPS IN DEVELOPING SHORT AND LONG RANGE OBJECTIVES

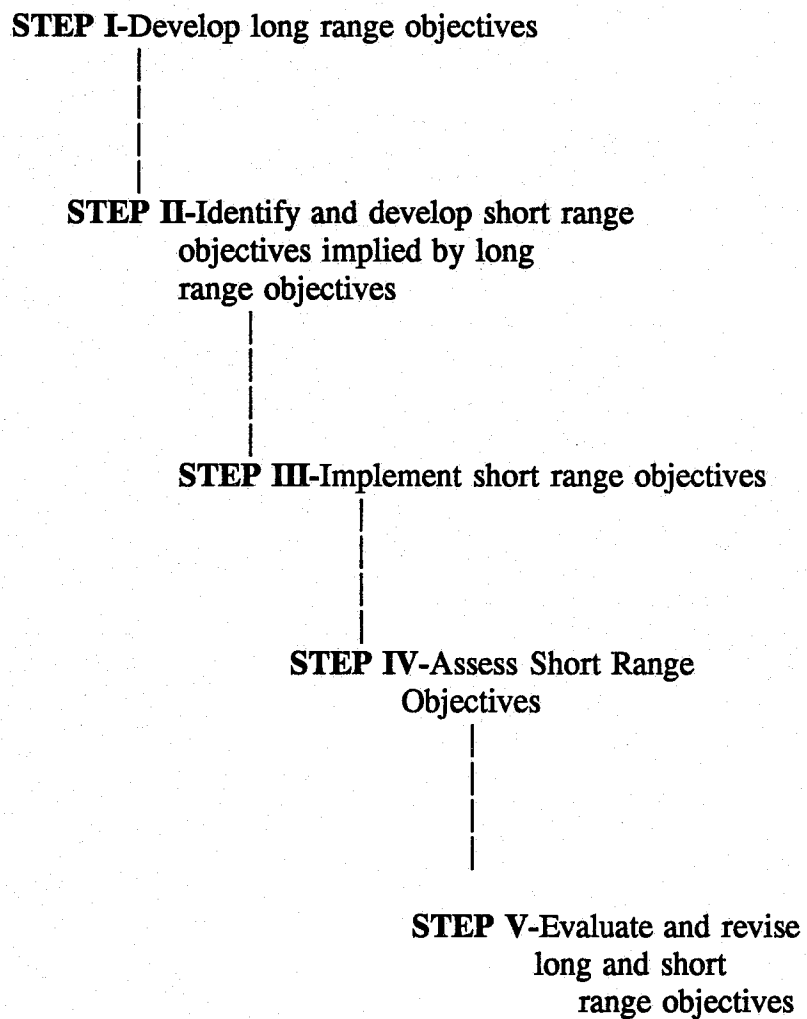
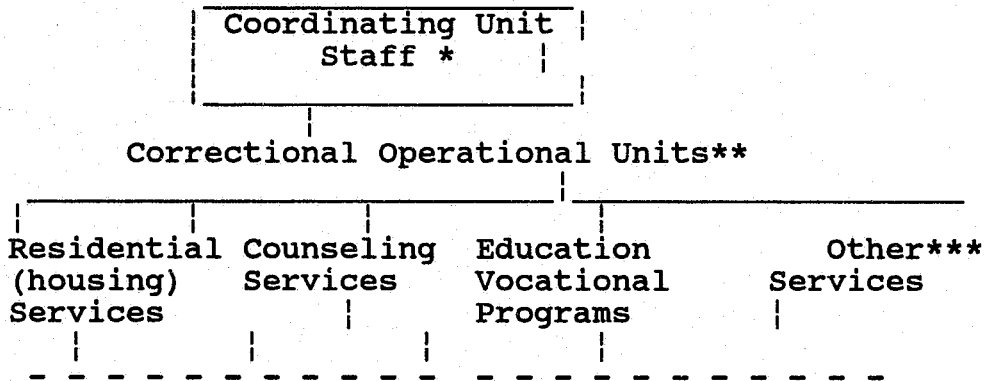
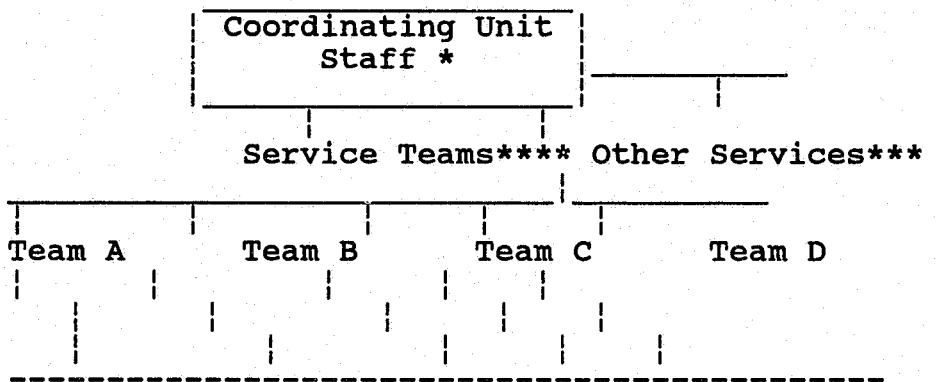


FIGURE 4. GANG COORDINATING UNIT EXAMPLES

A) Specialized Staff Operational Unit Approach



B) Team Staff Unit Approach



*** COORDINATING UNIT RESPONSIBILITIES:**

<u>Agency operations:</u>	<u>Liaisons with other agencies:</u>
Gang policy development	Interagency intelligence
Internal gang intelligence	Community networking
Staff/volunteer recruitment and training	Resource and political support
Program monitoring/evaluation	Administrative liaisons with parole, police, courts, etc.

****OPERATIONAL UNIT MODEL RESPONSIBILITIES:**

Each operational unit carries out its responsibilities

*****OTHER SERVICES:**

Include facility security, food services, medical, risk assessment, etc.

******SERVICE TEAM:**

Groups of counseling, educational, vocational, assessment, and residential life staff assigned to provide integrated services to specific groups (i.e., housing units) of youths. Staff groups work as a team.

Table 1. Categories and Examples of Gang Problem Causes

Category	Example Causes
Individual Motives	Status and self-esteem Material incentives Coerced involvement
Personal/Social development deficits	Poor education and job skills Job opportunities lacking Weak/negative family support relationships Personality/Psychological problems
Youth gang population relationships and pressures	Gang rivalry and retaliation Gang recruitment Establishing/maintaining gang status Contraband/drug control Organized gang leader introduced into youth population Conflict over gang leadership
Community gang and social conditions	Changing community population Inter-racial and ethnic conflict Poor services/programs, e.g., schools, job training, employment, recreation

Table 2. Parole Resource Assessment

<u>PAROLE STAFF</u>	ADEQUACY FOR SUPERVISION OF GANG PAROLEES	SIZE OF DEFICIT
Number		
Race Ethnic Mix		
Gang Knowledge		
Social Intervention Skills		
Community Organization Skills		
COMMUNITY RESOURCES		
Academic		
GED		
Vocational		
Jobs		
Other Services (Medical, Dental, etc.)		
FACILITIES		
Group Homes		
Independent Placements		
Detention		
Other		
Other		
HIGHER AGENCY AUTHORITY SUPPORT		
Material		
Expertise		
Policy		

Table 3: Chronic and Emerging Context Characteristics

Gang CharacteristicsType of Gang Context

	Chronic Problem	Emerging Problem
How long a problem (years)	10 or more	5 or less
Number of gangs (or major factions)	Two or more	One or a few
Number of youths that are gang members	Relatively ¹ large number	Relatively ² small number
Degree of gang organization	High	Low
Age Distribution	Older or Mix of younger and older	Mostly younger (16 and less)
History of types of problems	Serious and frequent violence and organized criminal activity	Mainly minor gang violence, crime or nuisance problems

¹For example, 10 percent or more of the teenagers in a particular neighborhood.

² For example, 5 percent or less of the teenagers in a particular neighborhood.

Table 4. Identification of Characteristics of the Current Gang Problem

1) Type of problem	Violence/intimidation Nonviolent crime Drug/contraband trafficking/use Theft Nuisance Gang colors, symbols Graffiti Other
2) Target of problem	Members of same gang Other gangs Non gang youths Community citizens/property Other
3) Is gang organized Yes/No	
4) Scope ¹	Large/Moderate/Small
5) Gang motives/purpose	Gang status Membership recruitment Rivalry and retaliation between gangs Predatory profit Conflict with community authorities
6) Age	Young (Under 17)/Older (17 and up)/Mixed

¹ *Scope refers to either the extent to which the problem involves or affects a large or small number of gang youths. It can also refer to whether one or more than one gang are involved.*

Table 5. Example Long and Short Range Objectives

LONG RANGE OBJECTIVE EXAMPLE:

Reduce renewed involvement in drug trafficking of paroled gang members by 50% over the next twelve months through:

- a) intensive surveillance, arrests, and parole revocations of trafficking parolees;
- b) providing access to legal means of earning income through intensive job training and placement of paroled gang youths;
- c) developing a coordinated system of targeting and monitoring of gang drug trafficking in the community with police and community agencies.

Results are expected to reduce drug related parole violations and recidivism among gang parolees and reduce the scope and seriousness of gang problems in the community.

SHORT RANGE OBJECTIVE EXAMPLES:

1. Develop a parolee classification system to identify youths most at risk for renewed gang offending and drug trafficking (One month).
 2. Establish system of intensive supervision of high risk youths (Two weeks).
 3. Initiate and assign high risk parolees to structured job training and placement program (One month).
 4. Develop and initiate a coordinated system of targeting and monitoring of gang drug trafficking communities with local law enforcement agencies (One to two months).
-

EXHIBITS 1 AND 2

Exhibit 1 is an adaption of a risk assessment used by the Ohio Department of Youth Services. Exhibit 2 is an adaption of a needs assessment used by the Colorado Division of Youth Services. We have modified these forms to include gang involvement dimensions.

Each item listed is weighted so that the sum total score on each assessment instrument provides an indication of the level of supervision and intensity of services required by each youth.

A word of caution has to be made about interpreting the weights assigned to each item in the instruments and interpretation of the total score for each youth. To our knowledge gang involvement has not yet been included and we are not sure what precise weight it should be given to predict risk of recidivism and service needs. In the absence of research on the predictive weight of gang involvement, we have roughly estimated the weights to be given to the gang items in the sample instruments (Exhibits 2 and 3). There have been many attempts to identify the extent to which different criminal and personal history factors are predictive of recidivism. (See Alschuler and Armstrong, 1990 for a review.)

EXHIBIT 1

GANG PAROLEE RISK REASSESSMENT

Name _____
Last First MI DOB _____

Date _____ Staff Person _____
Day Month Year

POINTS

A. GANG MEMBERSHIP HISTORY

1. Is the youth a gang member? _____
Not gang member=0 Wants to be=2 Associate member=4
Regular member=6 Core member=8 Leader=10
2. Does the youth have a record of gang related gangs? _____
None=0 1-2 nonfelony=2 3 or more nonfelony=4
1-2 nonviolent felony=6 3 or more nonviolent felony=8
1 violent felony=10 More than 1 violent felony=12

A. HISTORICAL & CURRENT

3. What was the youth's age at first adjudication: _____
13 & Younger = 4 14 = 3 15-16 = 1
17 & Older = 0
4. What was the total number of adjudicated complaints _____
for the youth?
7 or more = 3 3-6 = 2 1-2 = 0
5. What was the total number of adjudicated felonies for _____
the youth?
4 or more = 1 3 or less = 0
6. What was the felony level of the current committing _____
offense? F3 or F4 = 2 F1 or F2 = 0
7. Has the youth previously been on probation? _____
Yes = 1 No = 0
8. Has the youth previously been in and out-of-home _____
placement? Yes = 1 No = 0
9. Has there been a sibling under supervision? _____
Yes = 1 No = 0
10. Has there been parent criminality? Yes = 2 No = 0 _____

11. Has there been parental substance abuse? _____
Yes = 1 No = 0

12. Has there been family violence or abuse, neglect,
dependency referral? Yes = 1 No = 0 _____

13. Has the youth been identified in need of a special
education program? Yes = 1 No = 0 _____

14. Has the youth's educational achievement been 2 or
more years behind actual grade placement? _____
Yes = 1 No = 0

B. YOUTH ADJUSTMENT FACTORS

15. Has the youth been AWOL or escaped? Yes = 4 No = 0 _____

16. Has there been youth alcohol abuse problem? _____
Yes = 3 No = 0

17. Has there been discipline problems in the home? _____
Yes = 1 No = 0

18. What has been the youth's overall adjustment to
aftercare? _____
Major Problems = 4 Some Problems = 2 Positive = 0

TOTAL POINTS _____

Scoring Summary

23+ = Level I
15-22 = Level II
0-14 = Level III

Initial Assigned Supervision Category Management Factors (check)

___ Intensive, Level I

___ Regular, Level II

___ Low, Level III

EXHIBIT 2

Needs Assessment Summary

Name _____
Last First MI DOB _____

Date _____ Staff Person _____
Day Month Year

POINTS

1. Gang Membership _____

- 0 No
- 2 No, but wants to be
- 4 Associate, Fringe member
- 6 Regular member
- 8 Core member
- 10 Gang leader

2. Suicide Tendencies _____

- 0 No indicators, previous suicide attempts unlikely.
- 4 Some indicators, previous attempt probable or documented.
- 6 Definite tendencies, recent attempt or numerous documented attempts, or recent assessment indicates suicide potential.

3. Mental Health/Psychiatric _____

- 0 No history of previous mental health/psychiatric problems.
- 3 History of previous mental health/psychiatric problems.
- 6 Current needs for special mental health/psychiatric services.

4. Chemical/Drug Abuse _____

- 0 No known use.
- 2 No interference with functioning.
- 4 Occasional abuse, some disruption of functioning.
- 6 Frequent abuse, serious disruption of functioning.

5. Alcohol Abuse _____

- 0 No known use.
- 2 No interference with functioning.
- 4 Occasional abuse, some disruption of functioning.
- 6 Frequent abuse, serious disruption of functioning.

6. Employment _____

- 0 Has never sought or needed employment.
- 0 Has history of stable, paid, or unpaid work.
- 2 Has sporadic work history with adequate job seeking skills.

4 Has sporadic or no work history with inadequate job seeking skills.

7. Vocational/Technical Skills _____

- 0 Has developed marketable skill.
3 Needs to develop marketable skill.

8. Family Relationships _____

- 0 Relatively stable relationships.
3 some disorganization or stress, but potential for improvement.
5 Major disorganization or stress.

9. Use of Discretionary Time _____

- 0 Good: Has been consistently involved with school, job, and/or other productive activities.
1 Fair: Has been sporadically involved with school, and/or other productive activities.
3 Poor: Has been rarely involved with school, job, and/or other productive activities.

job,

10. Problem-Solving Skills _____

- 0 Capable of insight: Able to analyze personal problems.
1 Minimal insight: Suggest simplistic solutions to personal problems.
2 Lacks insight: No self-reflective abilities.

11. Learning Handicap _____

- 0 None
3 Mild disability, able to function in classroom, may need special education services.
5 Serious disability, interferes with social functioning, will need special education services.

One (1) Point for Each Characteristic (0 if not true/leave blank if unknown)

12. Educational Adjustment _____

- ____ Poor attendance record
____ Refusal to participate in any education program
____ Disruptive school behavior

13. Peer Relationships _____

- ____ Loner behavior
____ Poor social skills
____ Receives basically negative influence from peers --
most companions involved in delinquent behaviors
____ Dependent upon others
____ Exploits and/or manipulates others

14. Health and Hygiene _____

- Medical or dental referral needed
- Needs health or hygiene education
- Handicap or chronic illness limits functioning, needs frequent medical attention.

15. Sexual Adjustment

- Lacks, knowledge, needs sex education
- Sexual identity problems
- Promiscuity (not prostitution)
- Unwed parent
- Prostitution

15. Abuse and Neglect

- Sexual abuse, documented
- Sexual abuse, reported by youth
- Physical abuse, documented
- Physical abuse, reported by youth
- Neglect, documented
- Neglect, reported by youth

TOTAL NEEDS SCORE: _____

Needs Scale: High needs = 40+
 Moderate Needs = 25-39
 Low Needs = 24-below