

# HAMMOND



## VICINITY MAP

NOT TO SCALE

DATE  
07/19/12  
RESILIRE PROJECT NO.  
R11-042  
SHEET  
**W-1**

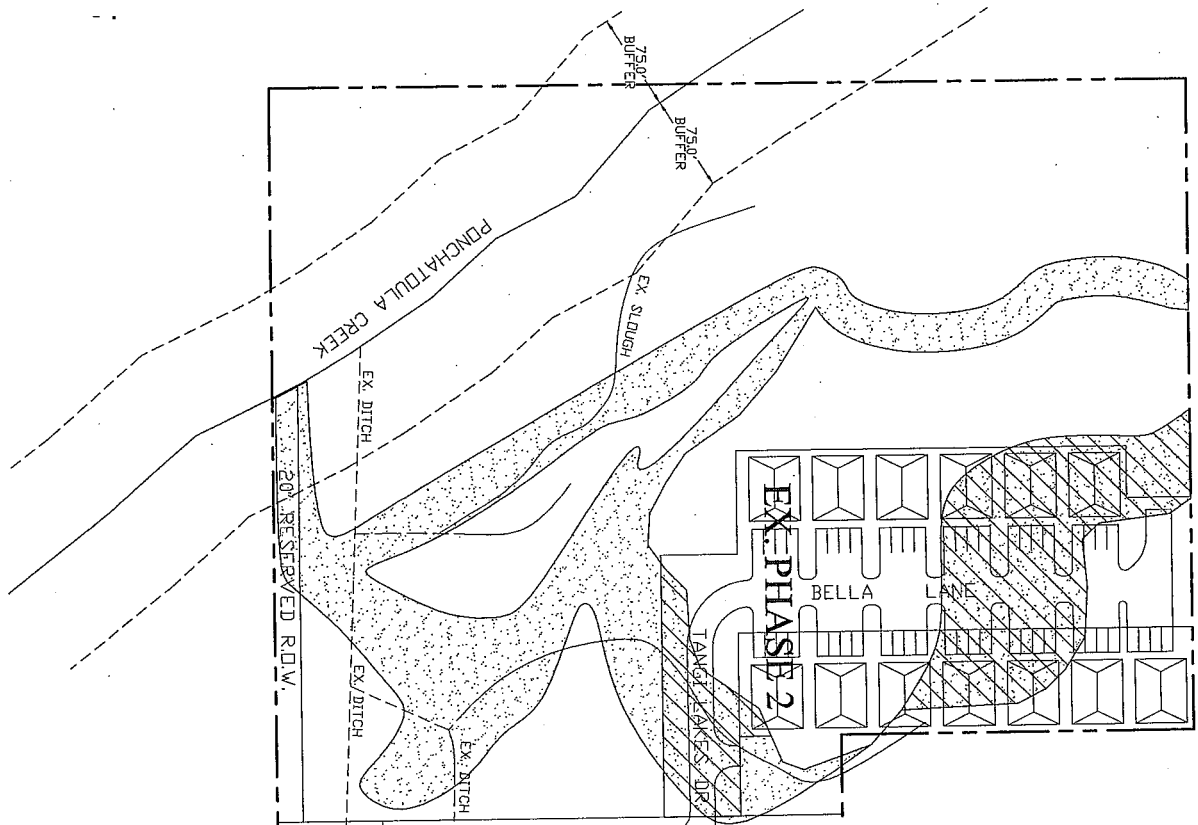
PLANS FOR  
**TANGI LAKES APARTMENTS, PHASE 3**  
SECTION 29, TOWNSHIP 6 SOUTH, RANGE 11 EAST  
TANGIPAHOA PARISH, LOUISIANA

 **RESILIRE**  
ENGINEERING & CONSULTING  
70117 HIGHWAY 59 SUITE F, ABITA SPRINGS,  
LOUISIANA 70420 (985)898-0182  
RESILIREGROUP.COM

REVISION	NO.

**EXISTING SITE WITH WETLANDS**

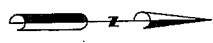
SCALE: 1" = 150'



**LEGEND:**

TOTAL WETLANDS - ±2.3 ACRES

PREVIOUSLY PERMITTED WETLANDS - ±0.80 ACRES



W. PLEASANT RIDGE ROAD

WETLAND PLANS FOR

**TANGI LAKES APARTMENTS, PHASE 3**

SECTION 29, TOWNSHIP 6 SOUTH, RANGE 8 EAST  
TANGIPAOHA PARISH, LOUISIANA



**RESILIRE**  
ENGINEERING & CONSULTING

70117 HIGHWAY 59 SUITE F, ABITA SPRINGS,  
LOUISIANA 70420 (985)898-0182  
RESILIREGROUP.COM

NO.	REVISION

**W-2**

RESILIRE PROJECT NO. R11-000 SHEET

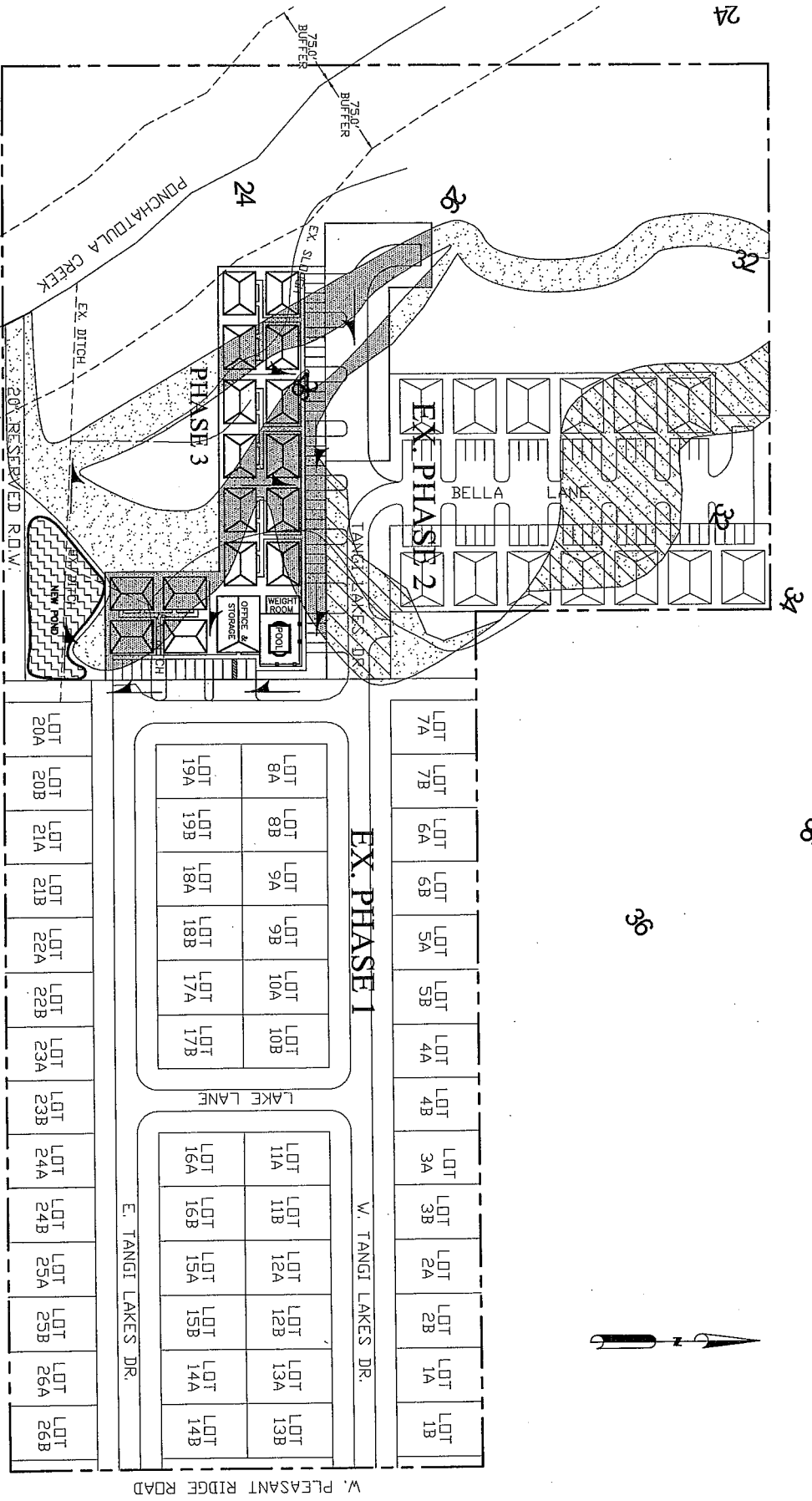
SCALE: 1"=100'

DATE: 11/11/11

CHECKED: MRC

DRAWN: DSS





NOTE:  
 16 BUILDINGS  
 (30' X 40' EA.)  
 2 UNITS PER BUILDING  
 (1 BEDROOMS EA.)  
 1 OFFICE/STORAGE BLDG.  
 1 WEIGHT ROOM WITH POOL

**LEGEND:**

- NON-DISTURBED WETLANDS - ±0.85 ACRES
- PREVIOUSLY PERMITTED WETLANDS - ±0.80 ACRES
- DISTURBED WETLANDS - ±0.65 ACRES
- EXISTING GROUND ELEVATIONS
- DEVELOPED DIRECTION OF DRAINAGE FLOW

**SITE LAYOUT WITH WETLANDS**

SCALE: 1" = 150'

NO.	REVISION

WETLAND PLANS FOR  
**TANGI LAKES APARTMENTS, PHASE 3**  
 SECTION 29, TOWNSHIP 6 SOUTH, RANGE 8 EAST  
 TANGIPAHOA PARISH, LOUISIANA

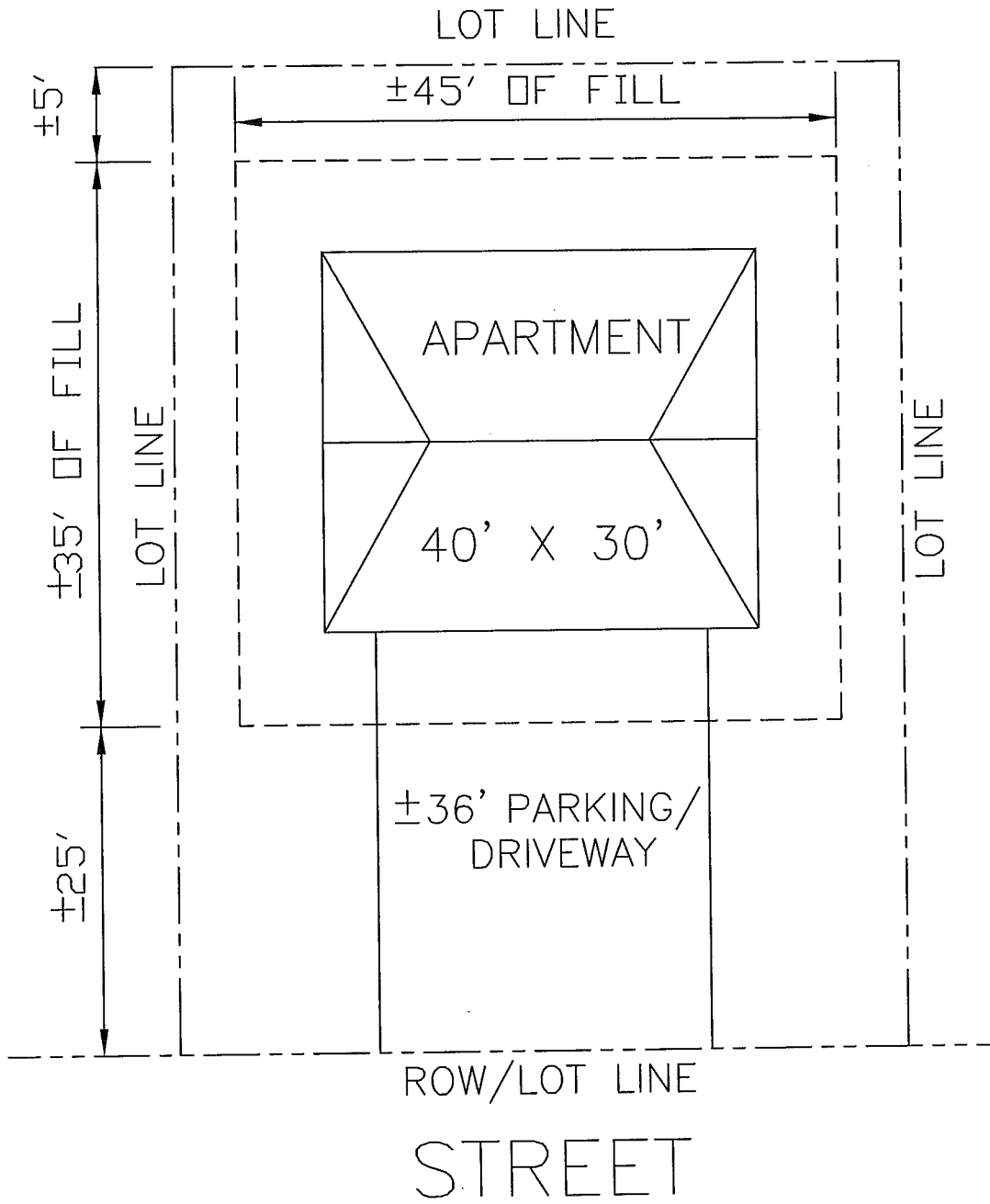
**RESILIRE**  
 ENGINEERING & CONSULTING  
 70117 HIGHWAY 59 SUITE F, ABITA SPRINGS,  
 LOUISIANA 70420 (985)898-0182  
 RESILIREGROUP.COM

**W-3**

RESILIRE PROJECT NO. R11-000  
 SCALE 1"=100'  
 DATE 11/11/11  
 CHECKED MRC  
 DSS  
 DRAWN

**W-3**





**TYPICAL PLAIN VIEW**

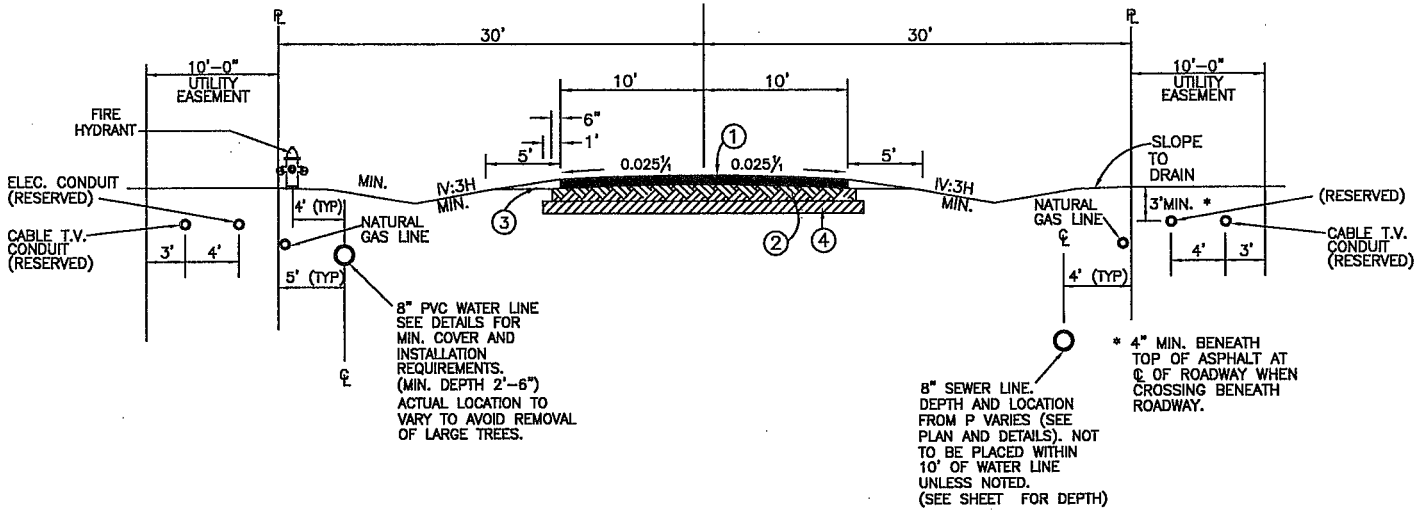
NOT TO SCALE

DATE  
07/19/12  
RESILIRE PROJECT NO.  
R11-042  
SHEET  
**W-5**

PLANS FOR  
**TANGI LAKES APARTMENTS, PHASE 3**  
SECTION 29, TOWNSHIP 6 SOUTH, RANGE 11 EAST  
TANGIPAOHA PARISH, LOUISIANA

**RESILIRE**  
ENGINEERING & CONSULTING  
70117 HIGHWAY 59 SUITE F, ABITA SPRINGS,  
LOUISIANA 70420 (985)898-0182  
RESILIREGROUP.COM

REVISION	NO.



## TYPICAL CONCRETE ROADWAY SECTION

NOT TO SCALE

### NOTES:

1. ALL UNDERGROUND UTILITY PARALLELING LINES SHALL BE A MINIMUM OF 24 INCHES BELOW THE SURFACE. WHEN CROSSING LINES, UTILITIES SHALL BE A MIN. OF 48 INCHES, EXCEPT HIGH PRESSURE TRANSMISSION LINES SHALL BE A MINIMUM OF 72 INCHES, BELOW ROAD CROWN.
2. ALL AERIAL PARALLELING LINES SHALL BE A MINIMUM OF 16 FT. ABOVE ROAD CROWN. AERIAL AUDIO/VIDEO CROSSING LINES SHALL BE 18 FT. HIGH. ALL OTHERS CROSSING LINES - 20 FT. HIGH.
3. DEVIATIONS FROM ABOVE STANDARDS MUST BE APPROVED, BEFORE CONSTRUCTION, BY THE PARISH ENGINEER.
4. ALL PONDS, DITCHES, AND SIDE SLOPES MUST BE SEEDED AND HAVE ADEQUATE GRASS GROWTH FOR EROSION CONTROL. REFER TO SECTION 717 AND 739 IN THE LADOTD MANUAL FOR MINIMUM REQUIREMENTS. VARIANCES ARE TO BE APPROVED BY PROJECT ENGINEER.
5. ALL SERVITUDES MUST BE CLEARED AS A PART OF THE OVERALL SITE CLEARING WORK.

### LEGEND: FOR CONCRETE PAVING

- ① 6" THICK (MIN.) CONCRETE PAVEMENT OF 4000 PSI STRENGTH AT 28 DAYS BREAK.
- ② 8" OF SOIL CEMENT. PERCENTAGE TO BE DETERMINED BY DESIGN ENGINEER AFTER FIELD TEST(10%), APPLIED BY VOLUME AND COMPACTED TO 95% STANDARD PROCTOR AS PER LATEST EDITION OF THE LOUISIANA STANDARD SPECIFICATIONS FOR ROADS & BRIDGES.  
OR  
8" OF SAND, CLAY, GRAVEL COMPACTED TO 100% STANDARD PROCTORS AS PER LATEST EDITION OF THE LOUISIANA STANDARD SPECIFICATIONS FOR ROADS & BRIDGES.
- ③ MINIMUM OF 12" OF SUB-BASE WITH PLASTICITY INDEX OF 15 OR LESS UNDISTURBED OR COMPACTED TO 95% STANDARD PROCTOR.
- ④ TOPSOIL PLACED, DRESSED TO DESIRED SLOPE, AND COMPACTED AS PER LATEST EDITION OF THE LOUISIANA STANDARD SPECIFICATIONS FOR ROADS & BRIDGES.

### NOTE:

PRIOR TO DEVELOPMENT TEST SHALL BE MADE OF THE INDIGENOUS SOIL TO DEPTH OF 18 INCHES BELOW THE BOTTOM OF THE TOPSOIL LAYER AND THE NECESSARY TREATMENT OF THE SUB-BASE AND THE BASE SHALL BE DETERMINED BY THE DESIGN ENGINEER ACCORDINGLY. THESE TEST SHALL BE MADE AT A FREQUENCY OF ONE FOR EVERY 1000' OF ROADWAY, OR A MINIMUM OF TWO TEST FOR ANY GIVEN SUBDIVISION.

### BASE PREPARATION AND PAVING NOTES:

1. ALL WORK AND MATERIAL TO BE IN COMPLIANCE WITH LOUISIANA DEPARTMENT OF TRANSPORTATION STANDARD SPECIFICATIONS FOR ROADS AND BRIDGES, LATEST EDITION, UNLESS OTHERWISE NOTED.
2. EXISTING 4" OF TOP SOIL IN PROPOSED ROAD BED TO BE EXCAVATED AND REMOVED AS NECESSARY FOR FINAL GRADE.
3. GRUB REMAINING BASE MATERIAL TO A DEPTH OF 12" BEFORE TREATING WITH CEMENT.

DATE  
07/19/12  
RESILIRE PROJECT NO.  
R11-042  
SHEET  
**W-6**

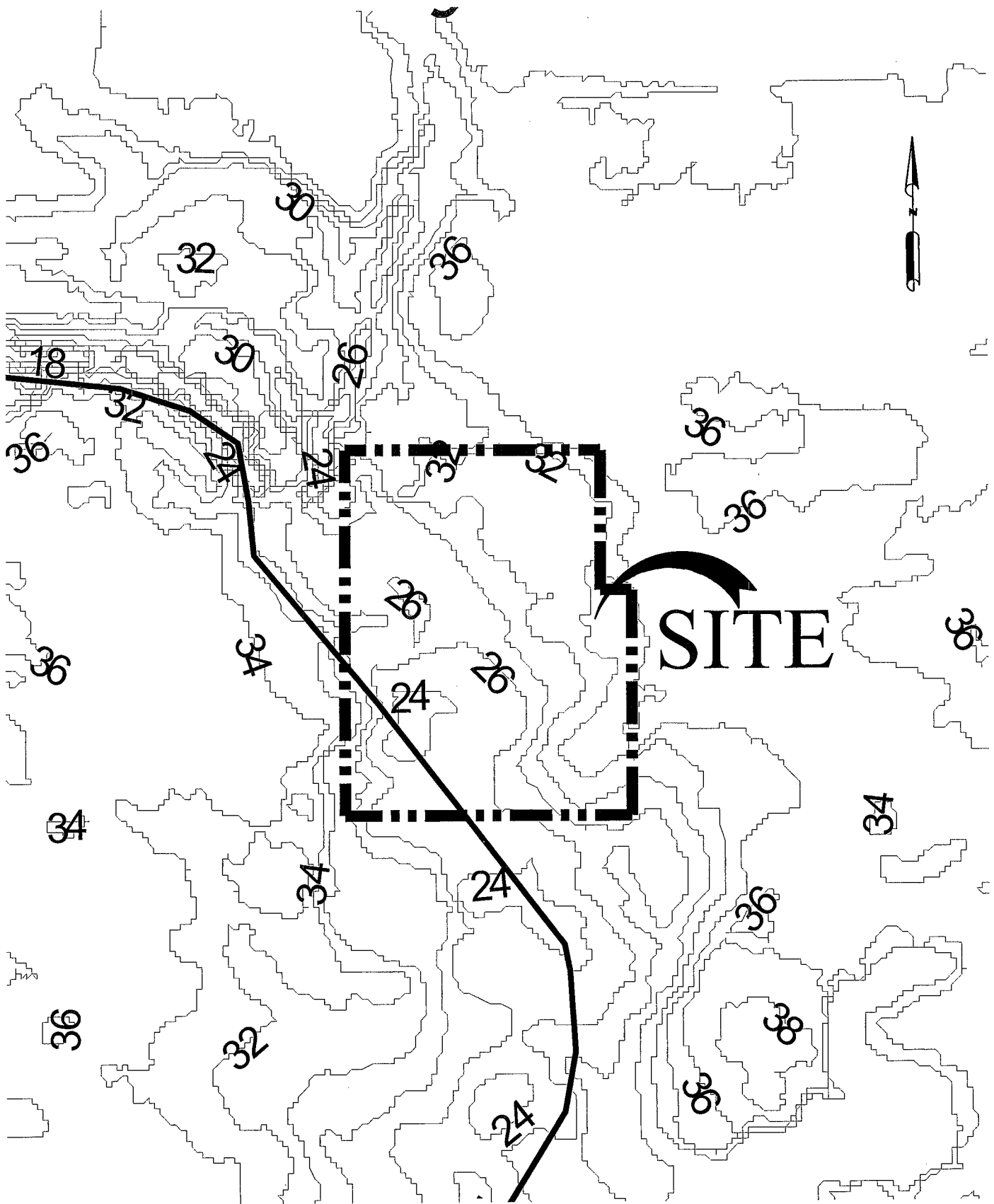
PLANS FOR  
**TANGI LAKES APARTMENTS, PHASE 3**  
SECTION 29, TOWNSHIP 6 SOUTH, RANGE 11 EAST  
TANGIPAHOA PARISH, LOUISIANA



**RESILIRE**  
ENGINEERING & CONSULTING

70117 HIGHWAY 59 SUITE F, ABITA SPRINGS,  
LOUISIANA 70420 (985)898-0182  
RESILIREGROUP.COM

REVISION	NL



# CONTOUR PLAN

NOT TO SCALE

DATE  
07/18/12  
RESILIRE PROJECT NO.  
R11-042  
SHEET  
**W-7**

PLANS FOR  
**TANGI LAKES APARTMENTS, PHASE 3**  
SECTION 29, TOWNSHIP 6 SOUTH, RANGE 11 EAST  
TANGIPAOHA PARISH, LOUISIANA

**RESILIRE**  
ENGINEERING & CONSULTING  
70117 HIGHWAY 59 SUITE F, ABITA SPRINGS,  
LOUISIANA 70420 (985)898-0182  
RESILIREGROUP.COM

REVISION	NO.