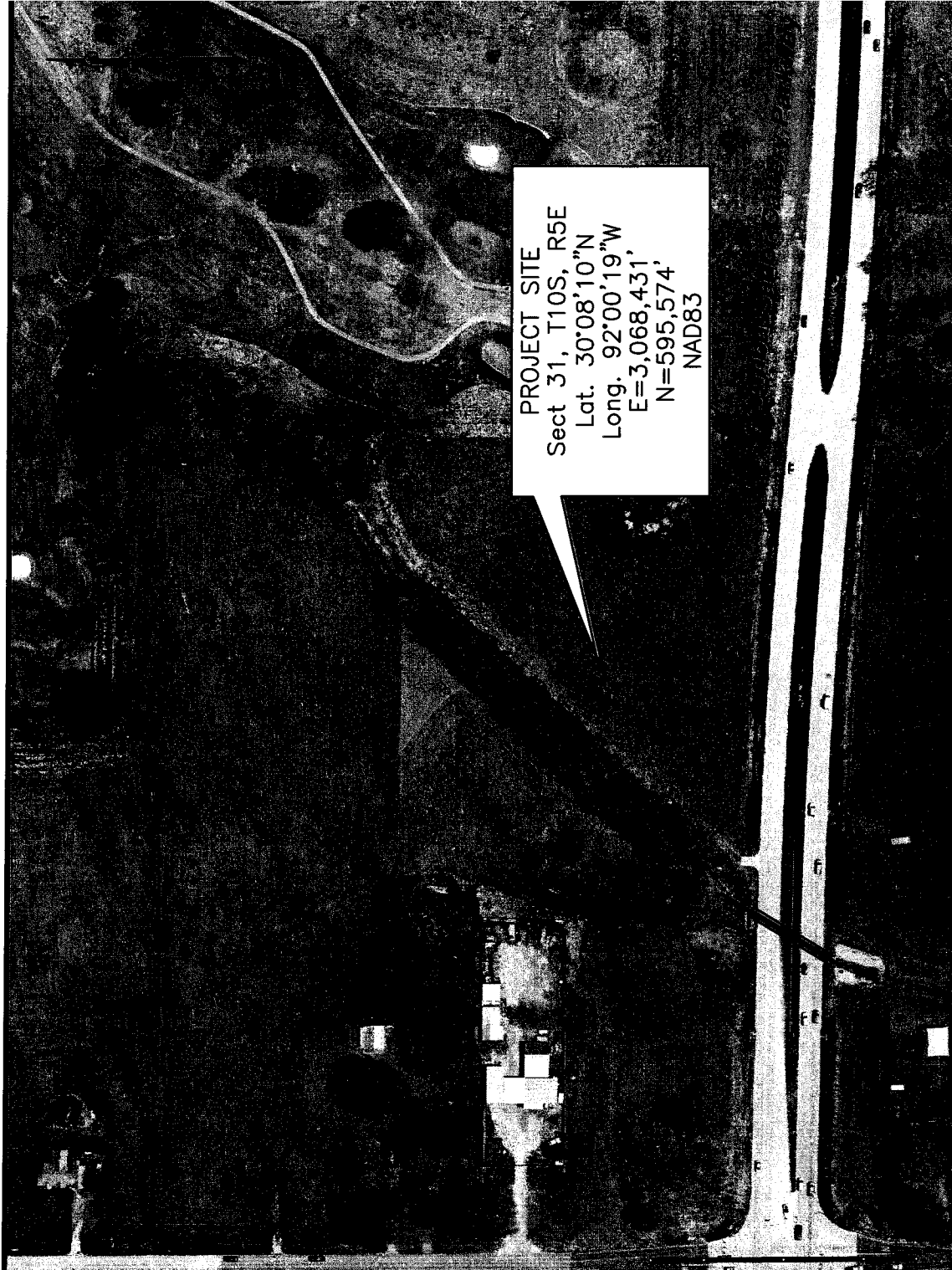


PROPERTY
LOCATION



PROJECT SITE
 Sect 31, T10S, R5E
 Lat. 30°08'10"N
 Long. 92°00'19"W
 E=3,068,431'
 N=595,574'
 NAD83

**ISAAC VEROT COULEE
 (LATERAL L6C-1)
 REALIGNMENT**

LOCATED IN SECTION 31
 T 10 S, R 5 E
 LAFAYETTE PARISH, LOUISIANA

**VICINITY MAP OF
 PROJECT SITE**

SCALE: 1" = 200'

ENGINEER L. CRAMER	DRAWN BY L. CRAMER	CHECKED BY T. VINCENT
DATE 9/20/2012	SCALE AS SHOWN	PROJECT NO. 7939-07
SURVEY BOOK NO. N/A	Pages N/A	FILE NO. N/A
ACAD. DWG. NO. 7937-07-01 vicinity map		SHEET 1 OF 3

Sellers & Associates, Inc.
 ENGINEERS
 148-B Easy Street, Lafayette, Louisiana 70506
 PLANNERS

**PROPOSED 800' RELOCATED DRAINAGE COULEE
(1,500 CU. YDS. EXCAVATION)**

LOT 3B OF PLOT 3
DAVID K. STINSON

LOT 1 OF PLOT 3
DAVID K. STINSON

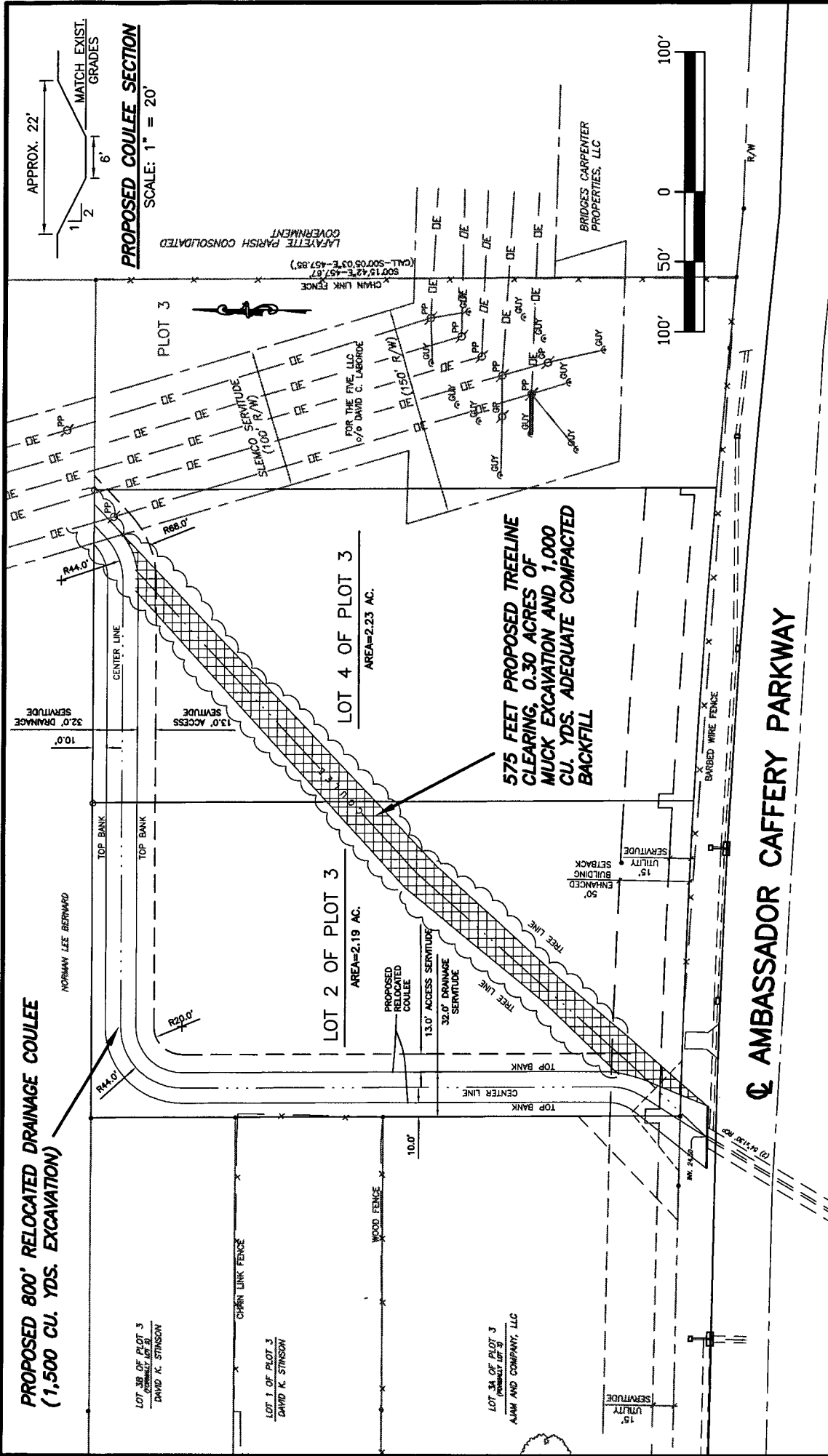
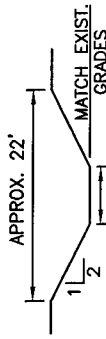
LOT 3A OF PLOT 3
(PARTIAL LOT 3)
ALAM AND COMPANY, LLC

LOT 2 OF PLOT 3
AREA=2.19 AC.

LOT 4 OF PLOT 3
AREA=2.23 AC.

**575 FEET PROPOSED TREE LINE
CLEARING, 0.30 ACRES OF
MUCK EXCAVATION AND 1,000
CU. YDS. ADEQUATE COMPACTED
BACKFILL**

PROPOSED COULEE SECTION
SCALE: 1" = 20'



☉ AMBASSADOR CAFFERY PARKWAY

**ISAAC VEROT COULEE
(LATERAL L6C-1)
REALIGNMENT**

LOCATED IN SECTION 31
T 10 S, R 5 E
LAFAYETTE PARISH, LOUISIANA

**PLAN OF
PROJECT SITE**

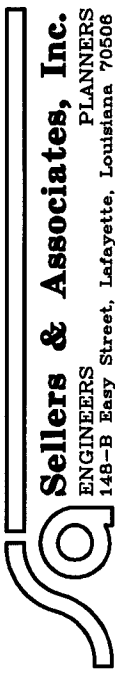
L E G E N D

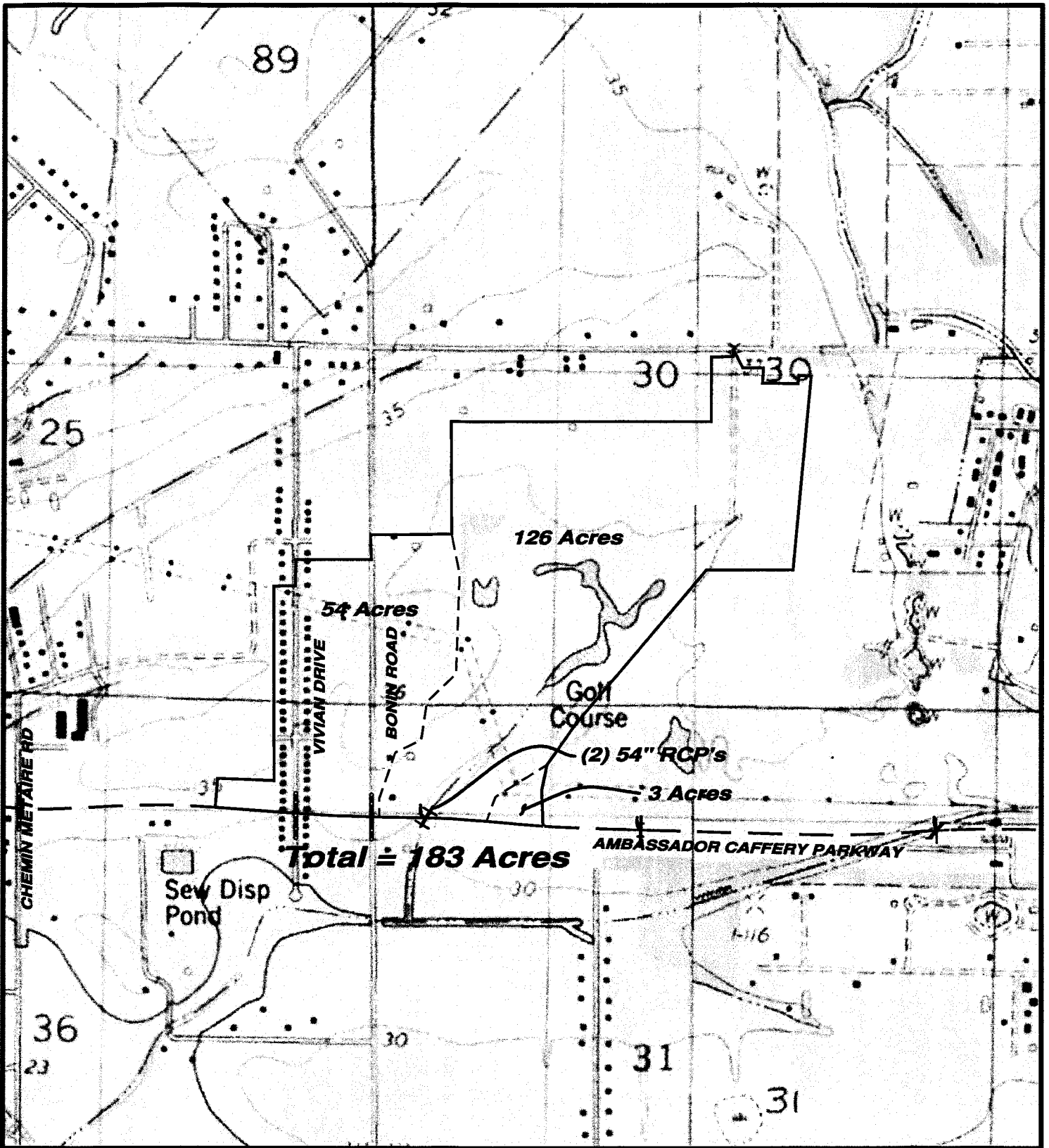


BACKFILLED COULEE

ENGINEER L. CRAMER	DRAWN BY L. CRAMER	CHECKED BY T. VINCENT
DATE 9/20/2012	SCALE 1" = 100'	PROJECT NO. 7939-07
SURVEY BOOK NO. N/A	Pages N/A	FILE NO. N/A
ACAD. DWG. NO. 7939-07-02 permit plan		SHEET 2 OF 3

Sellers & Associates, Inc.
ENGINEERS
148-B Easy Street, Lafayette, Louisiana 70506





N:\DATA\7939\7939-07\7939-07-03 Drainmap.dwg LAC September 20, 2012 - 11:17am

DRAINAGE AREA MAP

AMBASSADOR CAFFERY PARKWAY
(2) 54" Reinforced Concrete Pipes

LOCATED IN SECTION 31, T-10-S, R-5-E,
 CITY OF BROUSSARD
 LAFAYETTE PARISH, LOUISIANA

NO.	DATE	REVISION DESCRIPTION	BY
ENGINEER	DRAWN BY	CHECKED BY	SCALE
L. CRAMER	L. CRAMER	T. VINCENT	1"=750'
PROJECT NO.	FILE	DATE	SHEET
7939-07-03	NA	9/20/2012	3 of 3



Sellers & Associates, Inc.
 ENGINEERS SURVEYORS
 148-B Easy Street, Lafayette, LA 70506 (337) 232-0777