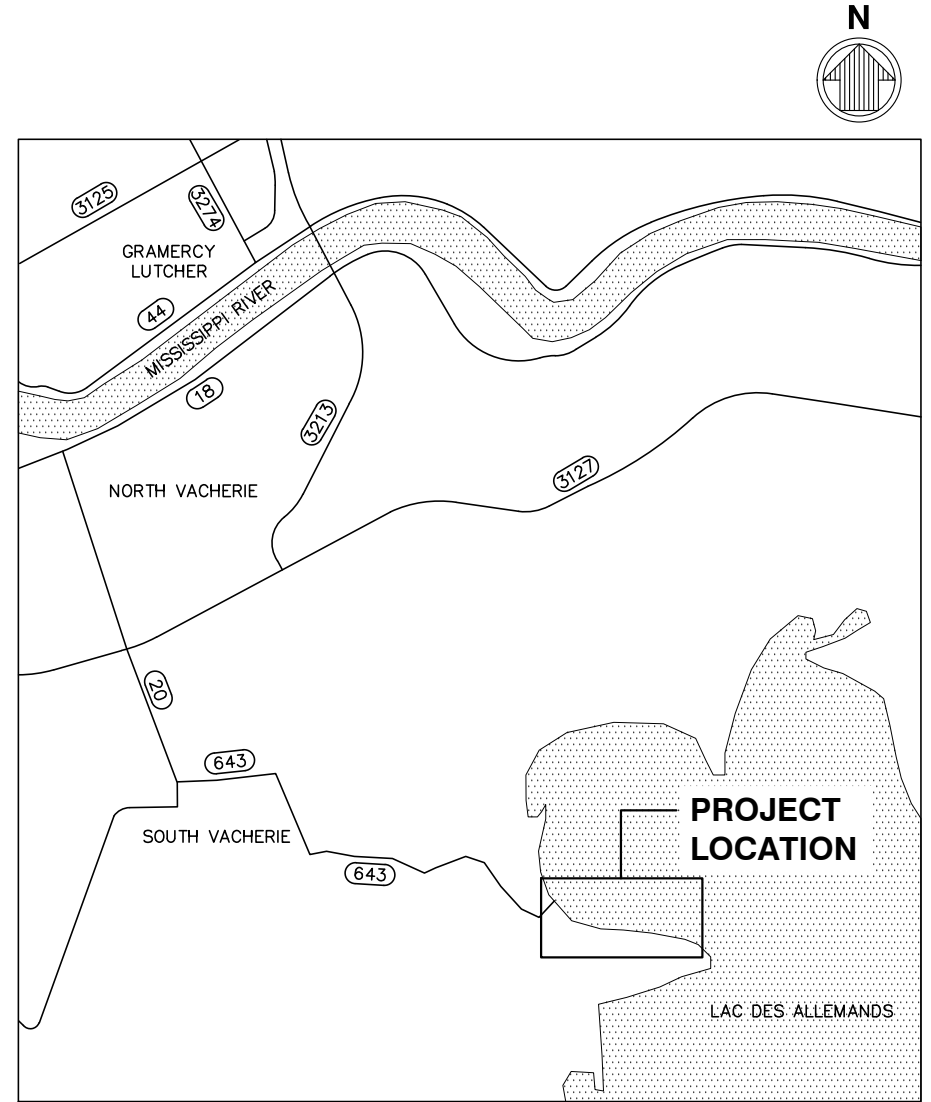


**PROJECT
LOCATION**



SURVEY NOTES

1. SURVEY PERFORMED IN JULY 2010 BY:
 BFM CORPORATION, L.L.C.
 PROFESSIONAL LAND SURVEYORS
 534 WILLIAMS BOULEVARD
 KENNER, LOUISIANA 70062
 PHONE: (504) 468-8800
2. BENCHMARK ID
 REFERENCE B.M. = BA 34 SM 02
 ELEVATION = 1.20' N.A.V.D. 88 (2006.81)
 LAT 29°54'41.63876" LONG 90°43'44.80597"
3. SURVEY VERTICAL DATUM = NORTH AMERICAN VERTICAL DATUM OF 1988 (NAVD 88).
4. SURVEY HORIZONTAL DATUM = STATE PLANE – NORTH AMERICAN DATUM OF 1983 (NAD 83),
 LOUISIANA SOUTH ZONE, US SURVEY FEET.
5. CONTOUR INTERVAL SHOWN IS 0.5 FEET.

SEAL

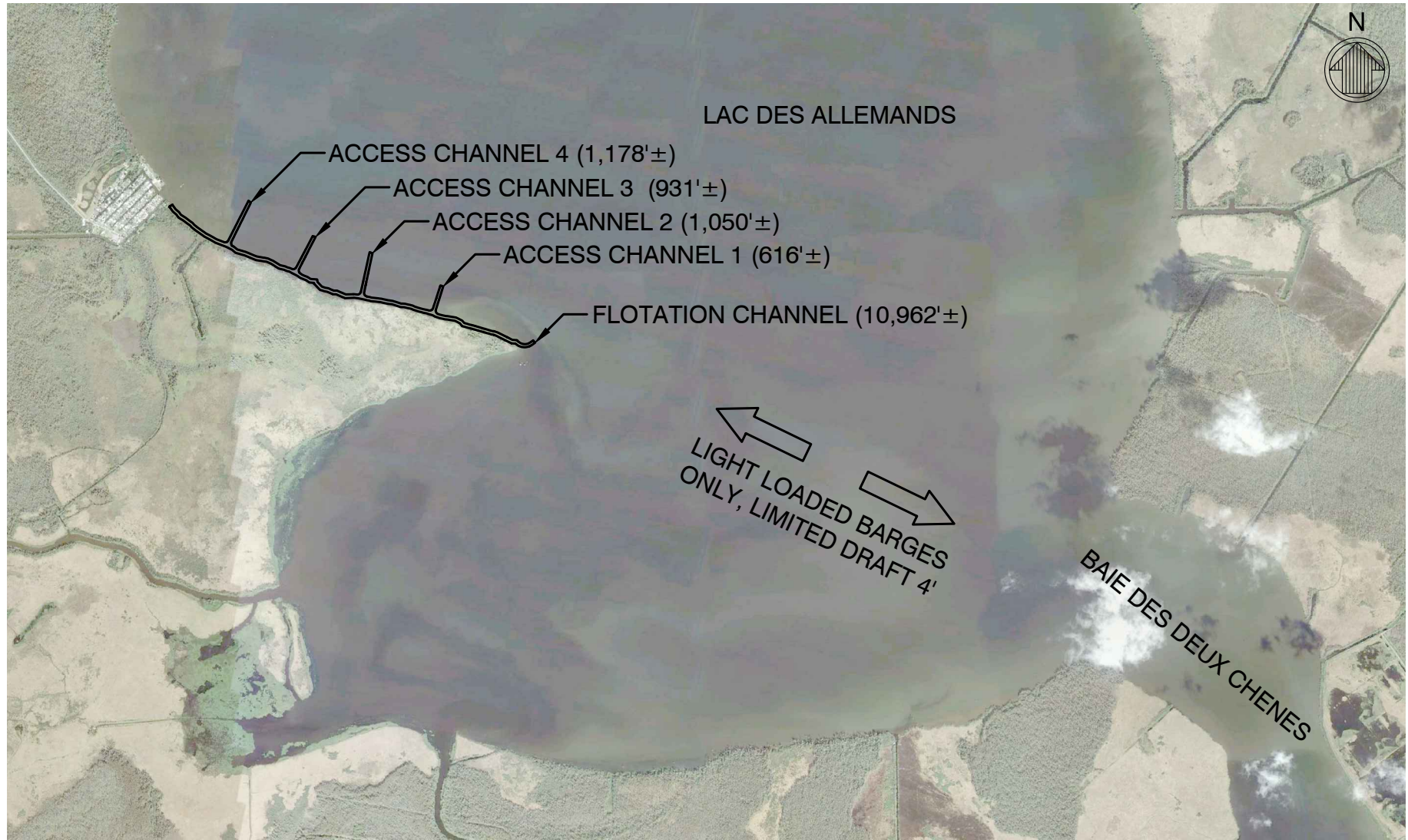
PURPOSE: WEST LAC DES ALLEMANDS
 SHORELINE PROTECTION

DATUM: NAD 83

VICINITY MAP
 NOT TO SCALE

APPLICATION BY:
 ST. JOHN THE BAPTIST PARISH
 LOUISIANA

WEST LAC DES ALLEMANDS
 SHORELINE PROTECTION
 PERMITTING AGENCIES: USACE AND
 LA DEPT OF NATURAL RESOURCES
 PREPARED BY: MOFFATT & NICHOL
 SHEET 1 OF 20 DATE: JULY 2012



PURPOSE: WEST LAC DES ALLEMANDS
SHORELINE PROTECTION

DATUM: NAD 83

ACCESS CHANNEL PLAN

2000' 0' 2000' 4000'

SCALE: 1"=4000'

APPLICATION BY:
ST. JOHN THE BAPTIST PARISH
LOUISIANA

**WEST LAC DES ALLEMANDS
SHORELINE PROTECTION**

PERMITTING AGENCIES: USACE AND
LA DEPT OF NATURAL RESOURCES

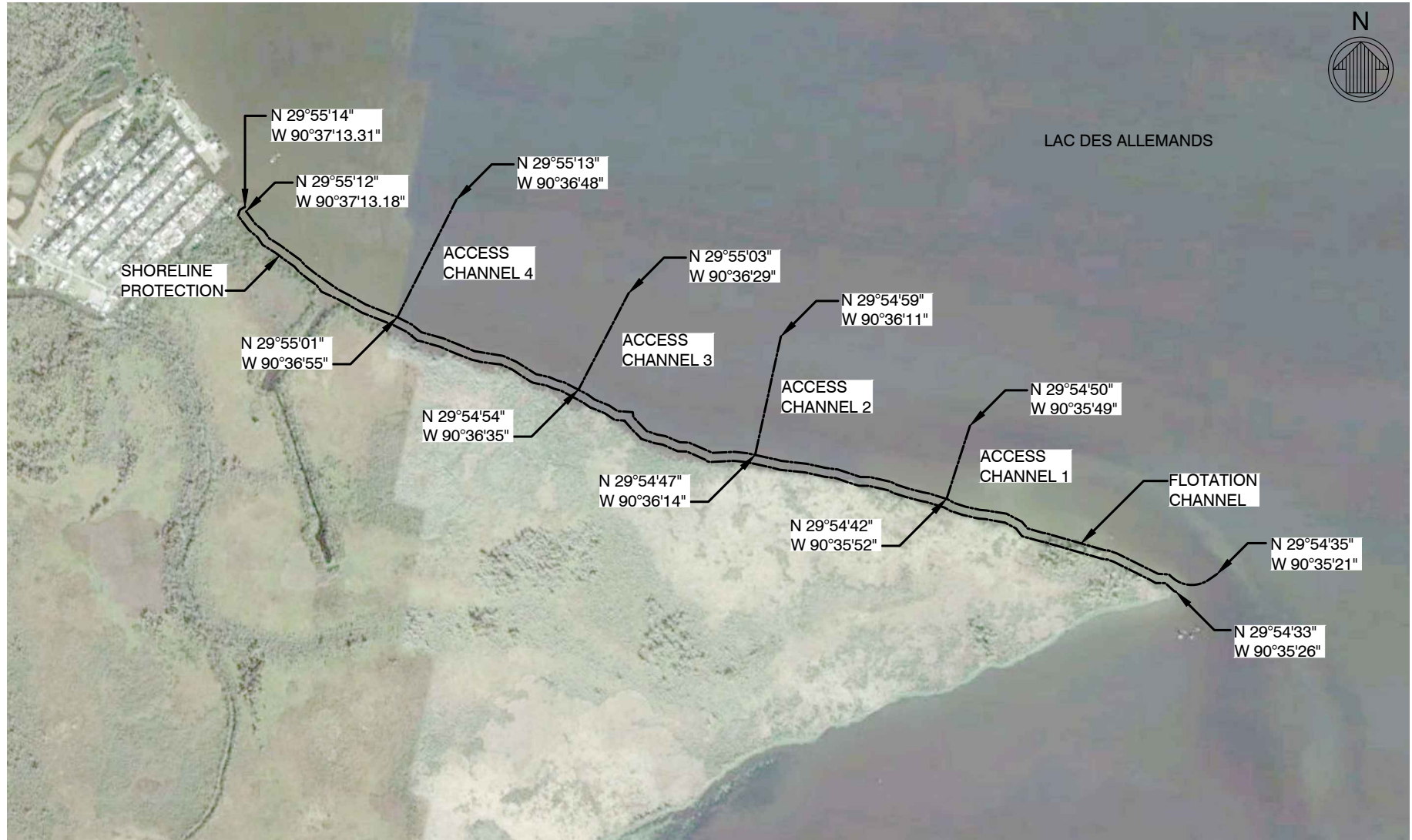
PREPARED BY: MOFFATT & NICHOL

SHEET 2 OF 20 DATE: JULY 2012

SEAL



LAC DES ALLEMANDS



PURPOSE: WEST LAC DES ALLEMANDS
SHORELINE PROTECTION

DATUM: NAD 83

COORDINATE PLAN



SCALE: 1"=4000'

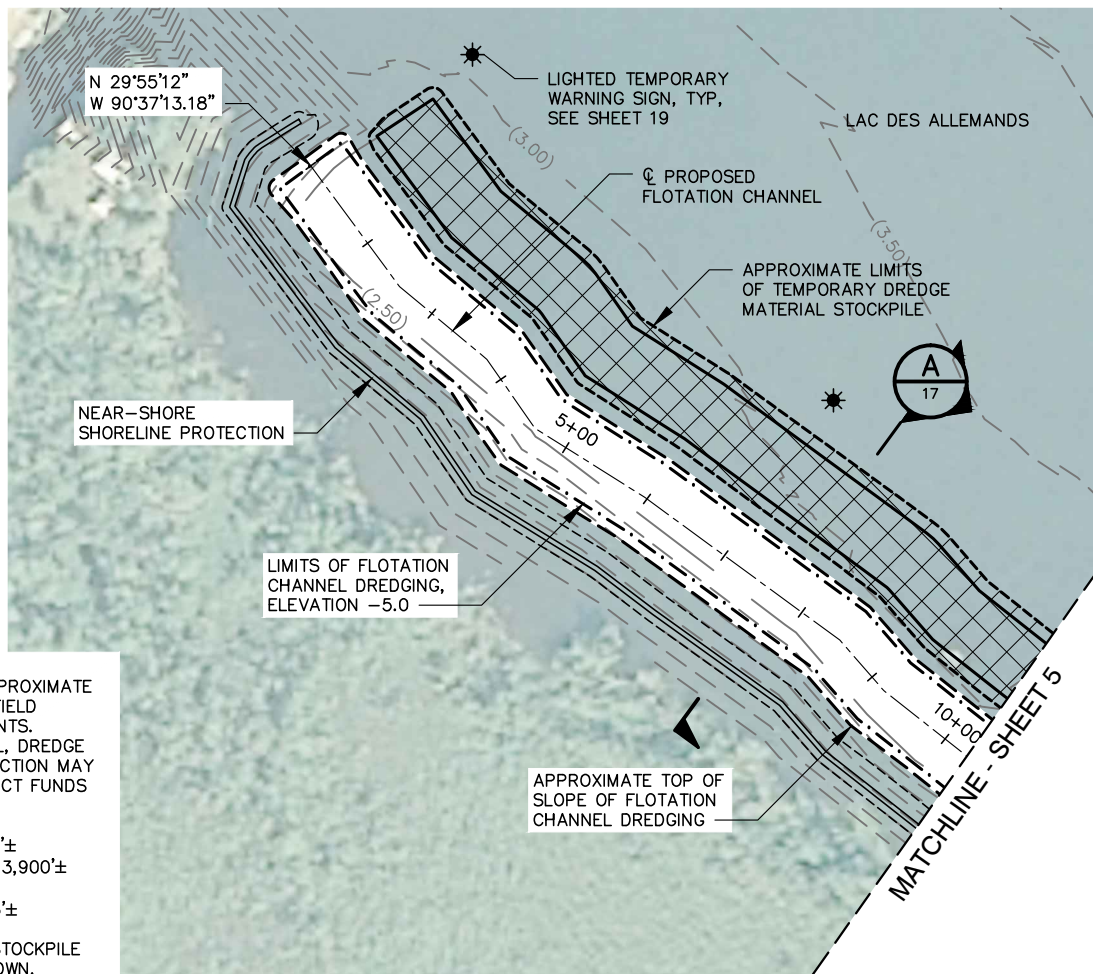
APPLICATION BY:
ST. JOHN THE BAPTIST PARISH
LOUISIANA

WEST LAC DES ALLEMANDS
SHORELINE PROTECTION

PERMITTING AGENCIES: USACE AND
LA DEPT OF NATURAL RESOURCES

PREPARED BY: MOFFATT & NICHOL
SHEET 3 OF 20 DATE: JULY 2012

SEAL



DREDGING NOTES

1. DREDGE DEPTHS AND LIMITS SHOWN ARE APPROXIMATE AND MAY BE ADJUSTED TO MEET CURRENT FIELD CONDITIONS AND CONSTRUCTION REQUIREMENTS.
2. PROJECT LENGTH, BOTH FLOTATION CHANNEL, DREDGE MATERIAL STOCKPILE AND SHORELINE PROTECTION MAY BE LESS THAN SHOWN, DEPENDED ON PROJECT FUNDS AVAILABLE.
 - SHORELINE PROTECTION LENGTH = 10,745'±
 - DREDGE MATERIAL STOCKPILE LENGTH = 13,900'±
 - FLOTATION CHANNEL LENGTH = 10,962'±
 - TOTAL ACCESS CHANNEL LENGTH = 3,775'±
3. DREDGE LIMITS AND TEMPORARY MATERIAL STOCKPILE SHALL BE CONTAINED WITHIN THE LIMITS SHOWN.
4. ESTIMATED DREDGE VOLUME FOR FLOTATION CHANNEL IS 90,500 C.Y.
5. ESTIMATED DISTURBANCE AREA FOR DREDGING AND MATERIAL STOCKPILE IS 63 ACRES.
6. VESSEL DRAFTS SHALL BE LIMITED TO 4 FEET.
7. FOR ADDITIONAL NOTES SEE SHEET 18.

SEAL

PURPOSE: WEST LAC DES ALLEMANDS
SHORELINE PROTECTION

DATUM: NAD 83

DREDGING PLAN – 1 OF 7



SCALE: 1"=200'

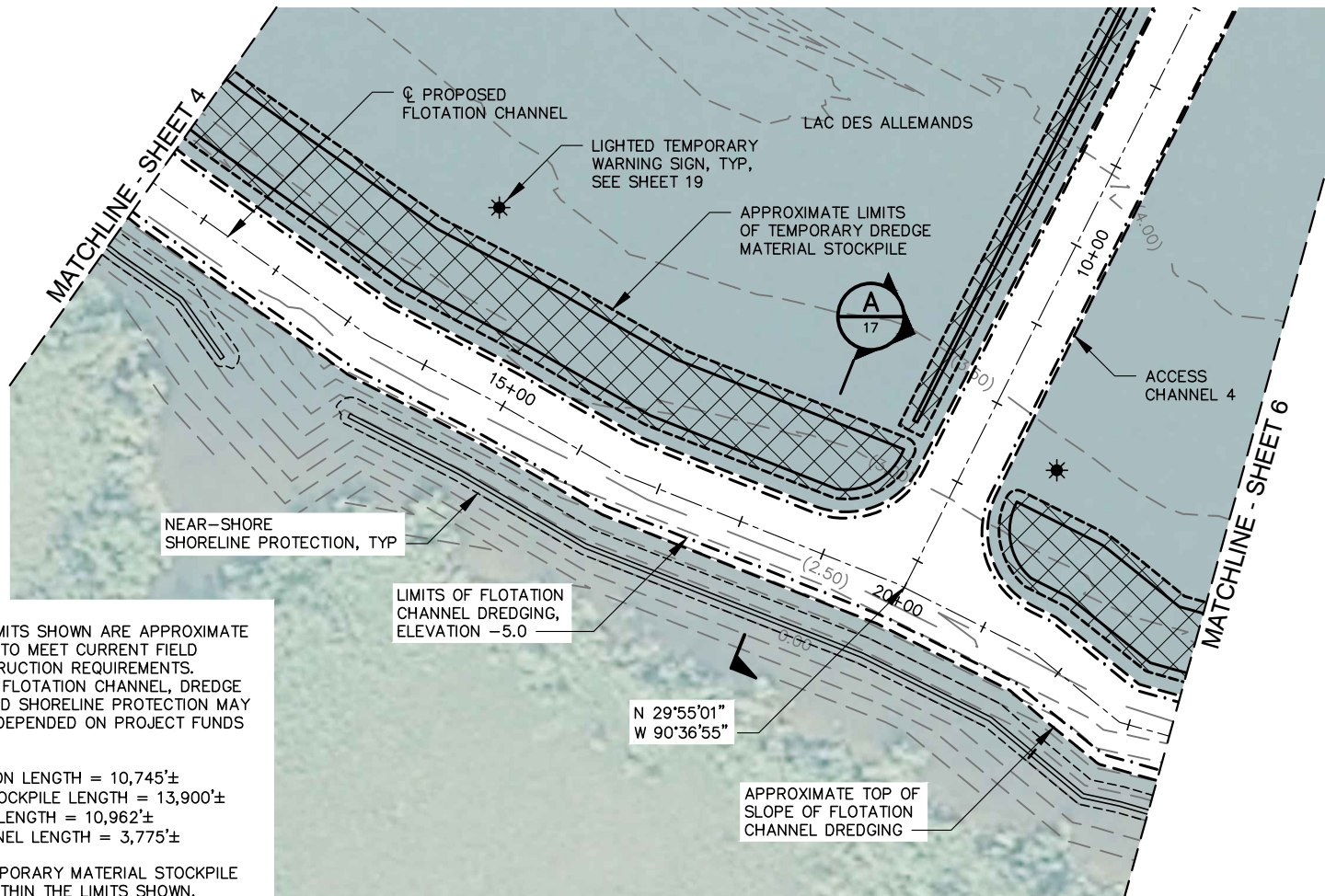
APPLICATION BY:
ST. JOHN THE BAPTIST PARISH
LOUISIANA

**WEST LAC DES ALLEMANDS
SHORELINE PROTECTION**

PERMITTING AGENCIES: USACE AND
LA DEPT OF NATURAL RESOURCES

PREPARED BY: MOFFATT & NICHOL

SHEET 4 OF 20 DATE: JULY 2012



DREDGING NOTES

1. DREDGE DEPTHS AND LIMITS SHOWN ARE APPROXIMATE AND MAY BE ADJUSTED TO MEET CURRENT FIELD CONDITIONS AND CONSTRUCTION REQUIREMENTS.
2. PROJECT LENGTH, BOTH FLOTATION CHANNEL, DREDGE MATERIAL STOCKPILE AND SHORELINE PROTECTION MAY BE LESS THAN SHOWN, DEPENDED ON PROJECT FUNDS AVAILABLE.
 - SHORELINE PROTECTION LENGTH = 10,745'±
 - DREDGE MATERIAL STOCKPILE LENGTH = 13,900'±
 - FLOTATION CHANNEL LENGTH = 10,962'±
 - TOTAL ACCESS CHANNEL LENGTH = 3,775'±
3. DREDGE LIMITS AND TEMPORARY MATERIAL STOCKPILE SHALL BE CONTAINED WITHIN THE LIMITS SHOWN.
4. ESTIMATED DREDGE VOLUME FOR FLOTATION CHANNEL IS 90,500 C.Y.
5. ESTIMATED DISTURBANCE AREA FOR DREDGING AND MATERIAL STOCKPILE IS 63 ACRES.
6. VESSEL DRAFTS SHALL BE LIMITED TO 4 FEET.
7. FOR ADDITIONAL NOTES SEE SHEET 18.

PURPOSE: WEST LAC DES ALLEMANDS
SHORELINE PROTECTION

DATUM: NAD 83

DREDGING PLAN - 2 OF 7



SCALE: 1"=200'

APPLICATION BY:
ST. JOHN THE BAPTIST PARISH
LOUISIANA

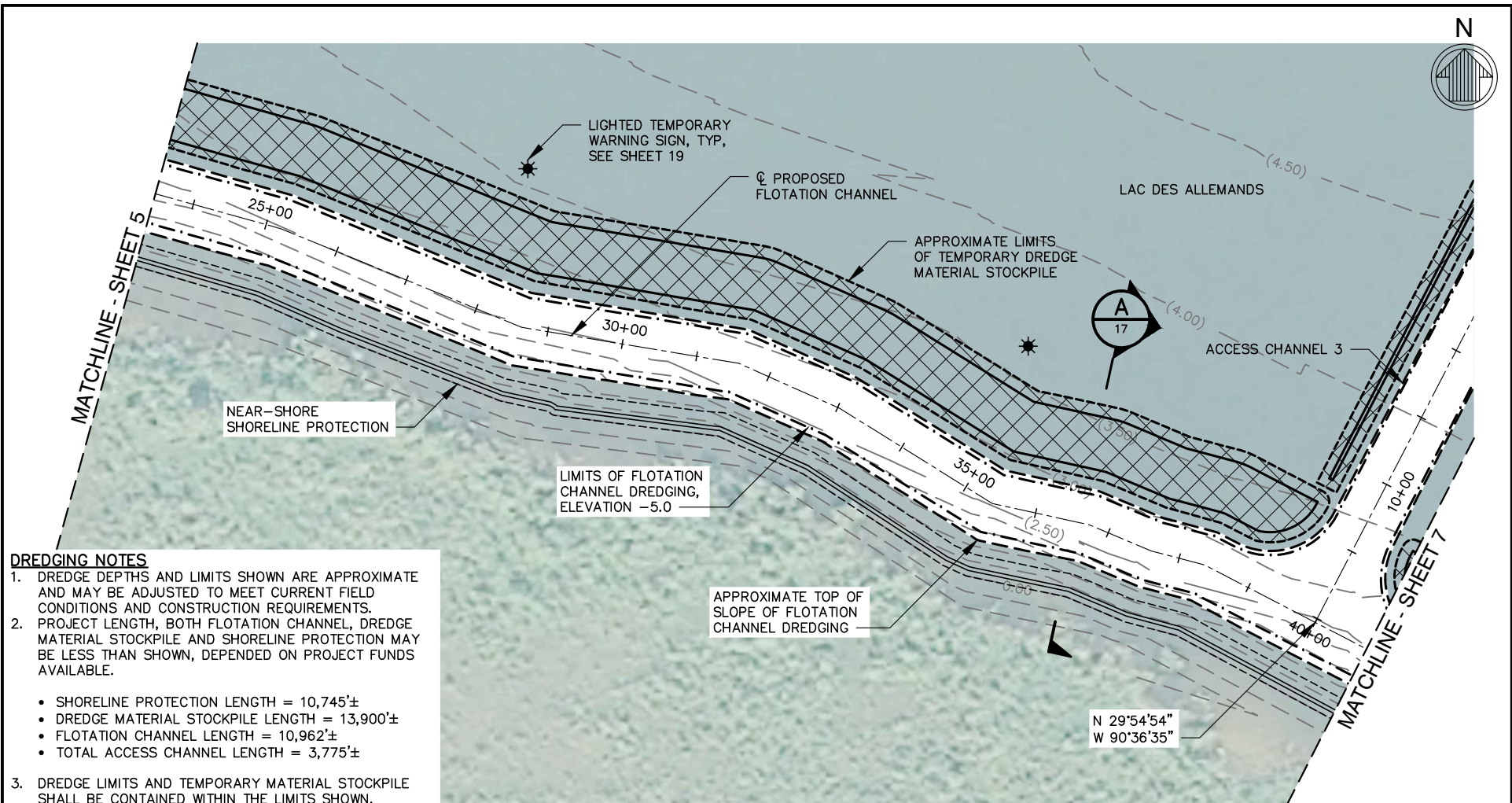
**WEST LAC DES ALLEMANDS
SHORELINE PROTECTION**

PERMITTING AGENCIES: USACE AND
LA DEPT OF NATURAL RESOURCES

PREPARED BY: MOFFATT & NICHOL

SHEET 5 OF 20 DATE: JULY 2012

SEAL



DREDGING NOTES

1. DREDGE DEPTHS AND LIMITS SHOWN ARE APPROXIMATE AND MAY BE ADJUSTED TO MEET CURRENT FIELD CONDITIONS AND CONSTRUCTION REQUIREMENTS.
2. PROJECT LENGTH, BOTH FLOTATION CHANNEL, DREDGE MATERIAL STOCKPILE AND SHORELINE PROTECTION MAY BE LESS THAN SHOWN, DEPENDED ON PROJECT FUNDS AVAILABLE.
 - SHORELINE PROTECTION LENGTH = 10,745'±
 - DREDGE MATERIAL STOCKPILE LENGTH = 13,900'±
 - FLOTATION CHANNEL LENGTH = 10,962'±
 - TOTAL ACCESS CHANNEL LENGTH = 3,775'±
3. DREDGE LIMITS AND TEMPORARY MATERIAL STOCKPILE SHALL BE CONTAINED WITHIN THE LIMITS SHOWN.
4. ESTIMATED DREDGE VOLUME FOR FLOTATION CHANNEL IS 90,500 C.Y.
5. ESTIMATED DISTURBANCE AREA FOR DREDGING AND MATERIAL STOCKPILE IS 63 ACRES.
6. VESSEL DRAFTS SHALL BE LIMITED TO 4 FEET.
7. FOR ADDITIONAL NOTES SEE SHEET 18.

SEAL

PURPOSE: WEST LAC DES ALLEMANDS
SHORELINE PROTECTION

DATUM: NAD 83

DREDGING PLAN – 3 OF 7

SCALE: 1"=200'

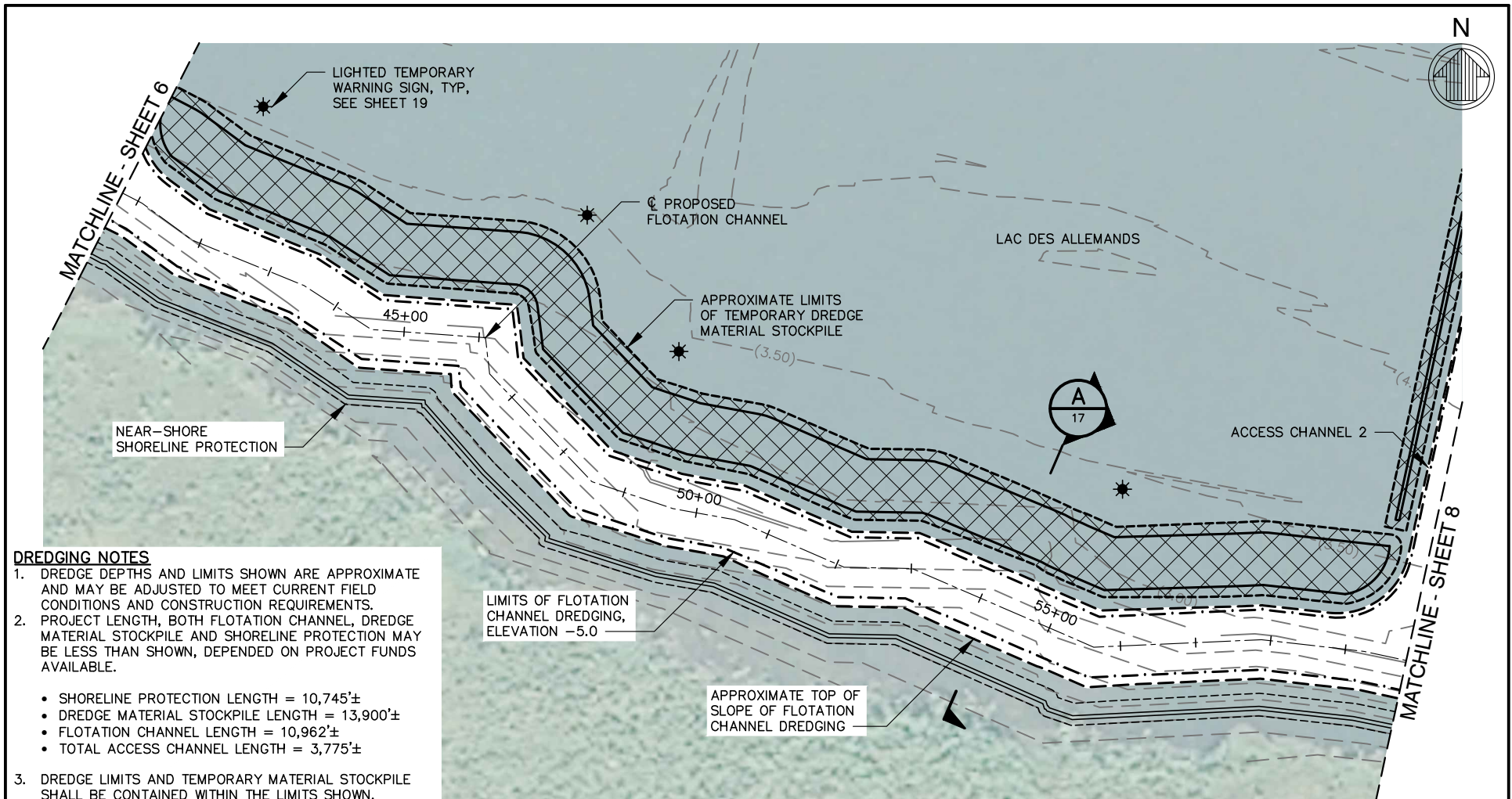
APPLICATION BY:
ST. JOHN THE BAPTIST PARISH
LOUISIANA

**WEST LAC DES ALLEMANDS
SHORELINE PROTECTION**

PERMITTING AGENCIES: USACE AND
LA DEPT OF NATURAL RESOURCES

PREPARED BY: MOFFATT & NICHOL

SHEET 6 OF 20 DATE: JULY 2012



DREDGING NOTES

1. DREDGE DEPTHS AND LIMITS SHOWN ARE APPROXIMATE AND MAY BE ADJUSTED TO MEET CURRENT FIELD CONDITIONS AND CONSTRUCTION REQUIREMENTS.
2. PROJECT LENGTH, BOTH FLOTATION CHANNEL, DREDGE MATERIAL STOCKPILE AND SHORELINE PROTECTION MAY BE LESS THAN SHOWN, DEPENDED ON PROJECT FUNDS AVAILABLE.
 - SHORELINE PROTECTION LENGTH = 10,745'±
 - DREDGE MATERIAL STOCKPILE LENGTH = 13,900'±
 - FLOTATION CHANNEL LENGTH = 10,962'±
 - TOTAL ACCESS CHANNEL LENGTH = 3,775'±
3. DREDGE LIMITS AND TEMPORARY MATERIAL STOCKPILE SHALL BE CONTAINED WITHIN THE LIMITS SHOWN.
4. ESTIMATED DREDGE VOLUME FOR FLOTATION CHANNEL IS 90,500 C.Y.
5. ESTIMATED DISTURBANCE AREA FOR DREDGING AND MATERIAL STOCKPILE IS 63 ACRES.
6. VESSEL DRAFTS SHALL BE LIMITED TO 4 FEET.
7. FOR ADDITIONAL NOTES SEE SHEET 18.

PURPOSE: WEST LAC DES ALLEMANDS
SHORELINE PROTECTION

DATUM: NAD 83

DREDGING PLAN - 4 OF 7

100' 0' 100' 200'

SCALE: 1"=200'

APPLICATION BY:
ST. JOHN THE BAPTIST PARISH
LOUISIANA

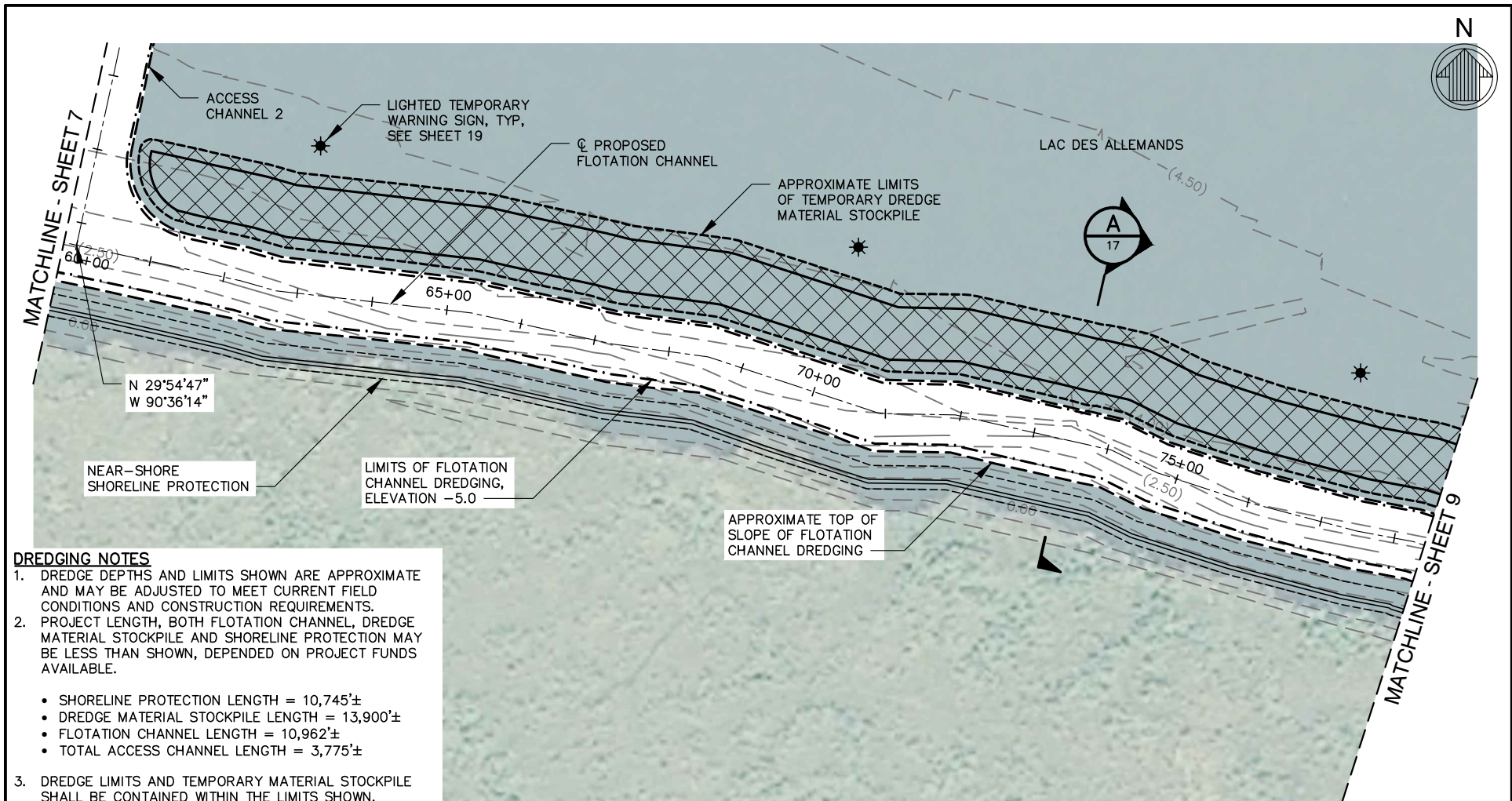
**WEST LAC DES ALLEMANDS
SHORELINE PROTECTION**

PERMITTING AGENCIES: USACE AND
LA DEPT OF NATURAL RESOURCES

PREPARED BY: MOFFATT & NICHOL

SHEET 7 OF 20 DATE: JULY 2012

SEAL



DREDGING NOTES

1. DREDGE DEPTHS AND LIMITS SHOWN ARE APPROXIMATE AND MAY BE ADJUSTED TO MEET CURRENT FIELD CONDITIONS AND CONSTRUCTION REQUIREMENTS.
2. PROJECT LENGTH, BOTH FLOTATION CHANNEL, DREDGE MATERIAL STOCKPILE AND SHORELINE PROTECTION MAY BE LESS THAN SHOWN, DEPENDED ON PROJECT FUNDS AVAILABLE.
 - SHORELINE PROTECTION LENGTH = 10,745'±
 - DREDGE MATERIAL STOCKPILE LENGTH = 13,900'±
 - FLOTATION CHANNEL LENGTH = 10,962'±
 - TOTAL ACCESS CHANNEL LENGTH = 3,775'±
3. DREDGE LIMITS AND TEMPORARY MATERIAL STOCKPILE SHALL BE CONTAINED WITHIN THE LIMITS SHOWN.
4. ESTIMATED DREDGE VOLUME FOR FLOTATION CHANNEL IS 90,500 C.Y.
5. ESTIMATED DISTURBANCE AREA FOR DREDGING AND MATERIAL STOCKPILE IS 63 ACRES.
6. VESSEL DRAFTS SHALL BE LIMITED TO 4 FEET.
7. FOR ADDITIONAL NOTES SEE SHEET 18.

SEAL

PURPOSE: WEST LAC DES ALLEMANDS
SHORELINE PROTECTION

DATUM: NAD 83

DREDGING PLAN – 5 OF 7



SCALE: 1"=200'

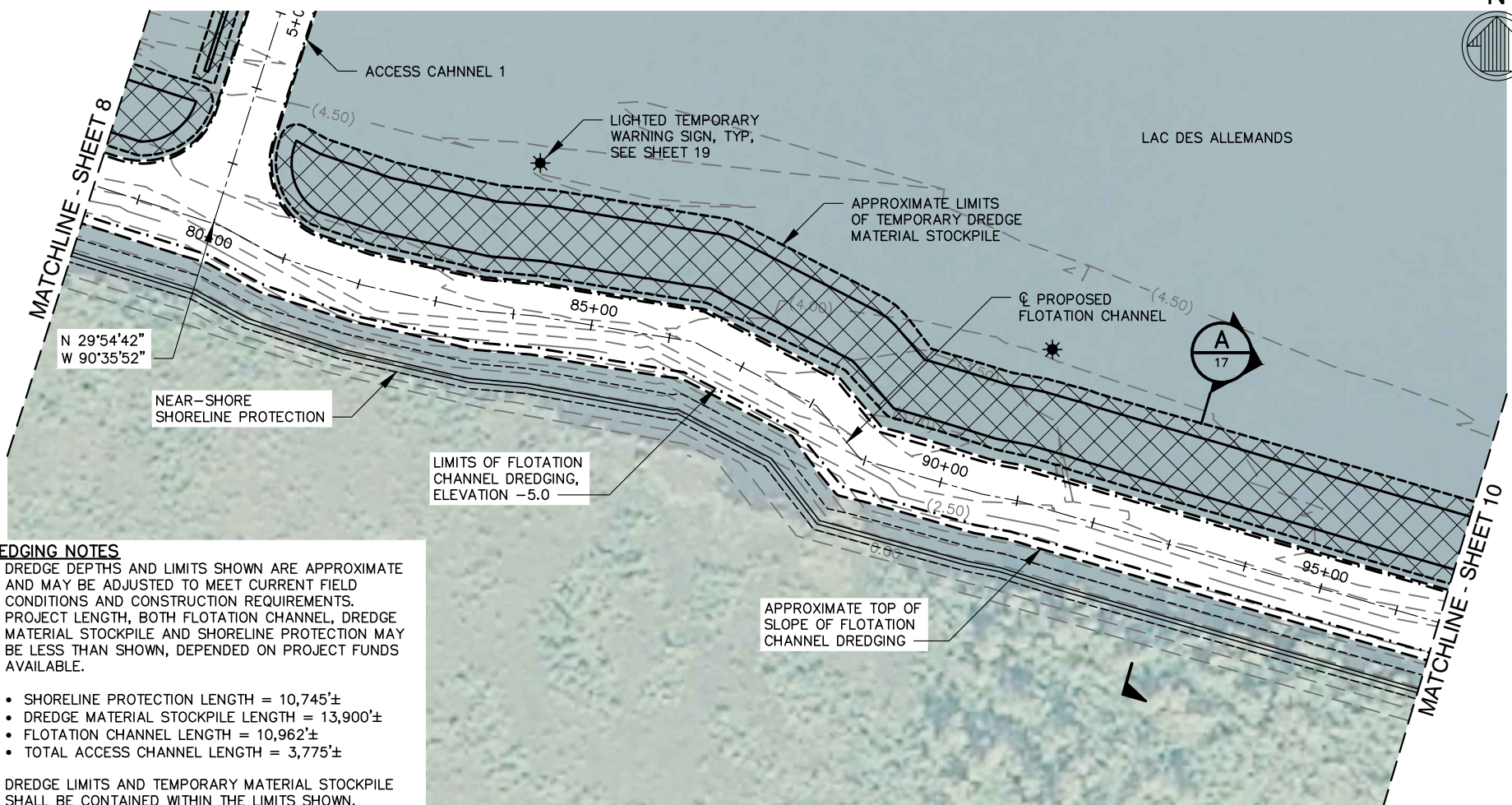
APPLICATION BY:
ST. JOHN THE BAPTIST PARISH
LOUISIANA

**WEST LAC DES ALLEMANDS
SHORELINE PROTECTION**

PERMITTING AGENCIES: USACE AND
LA DEPT OF NATURAL RESOURCES

PREPARED BY: MOFFATT & NICHOL

SHEET 8 OF 20 DATE: JULY 2012



DREDGING NOTES

1. DREDGE DEPTHS AND LIMITS SHOWN ARE APPROXIMATE AND MAY BE ADJUSTED TO MEET CURRENT FIELD CONDITIONS AND CONSTRUCTION REQUIREMENTS.
2. PROJECT LENGTH, BOTH FLOTATION CHANNEL, DREDGE MATERIAL STOCKPILE AND SHORELINE PROTECTION MAY BE LESS THAN SHOWN, DEPENDED ON PROJECT FUNDS AVAILABLE.
 - SHORELINE PROTECTION LENGTH = 10,745'±
 - DREDGE MATERIAL STOCKPILE LENGTH = 13,900'±
 - FLOTATION CHANNEL LENGTH = 10,962'±
 - TOTAL ACCESS CHANNEL LENGTH = 3,775'±
3. DREDGE LIMITS AND TEMPORARY MATERIAL STOCKPILE SHALL BE CONTAINED WITHIN THE LIMITS SHOWN.
4. ESTIMATED DREDGE VOLUME FOR FLOTATION CHANNEL IS 90,500 C.Y.
5. ESTIMATED DISTURBANCE AREA FOR DREDGING AND MATERIAL STOCKPILE IS 63 ACRES.
6. VESSEL DRAFTS SHALL BE LIMITED TO 4 FEET.
7. FOR ADDITIONAL NOTES SEE SHEET 18.

PURPOSE: WEST LAC DES ALLEMANDS
SHORELINE PROTECTION

DATUM: NAD 83

DREDGING PLAN – 6 OF 7

SCALE: 1"=200'

APPLICATION BY:
ST. JOHN THE BAPTIST PARISH
LOUISIANA

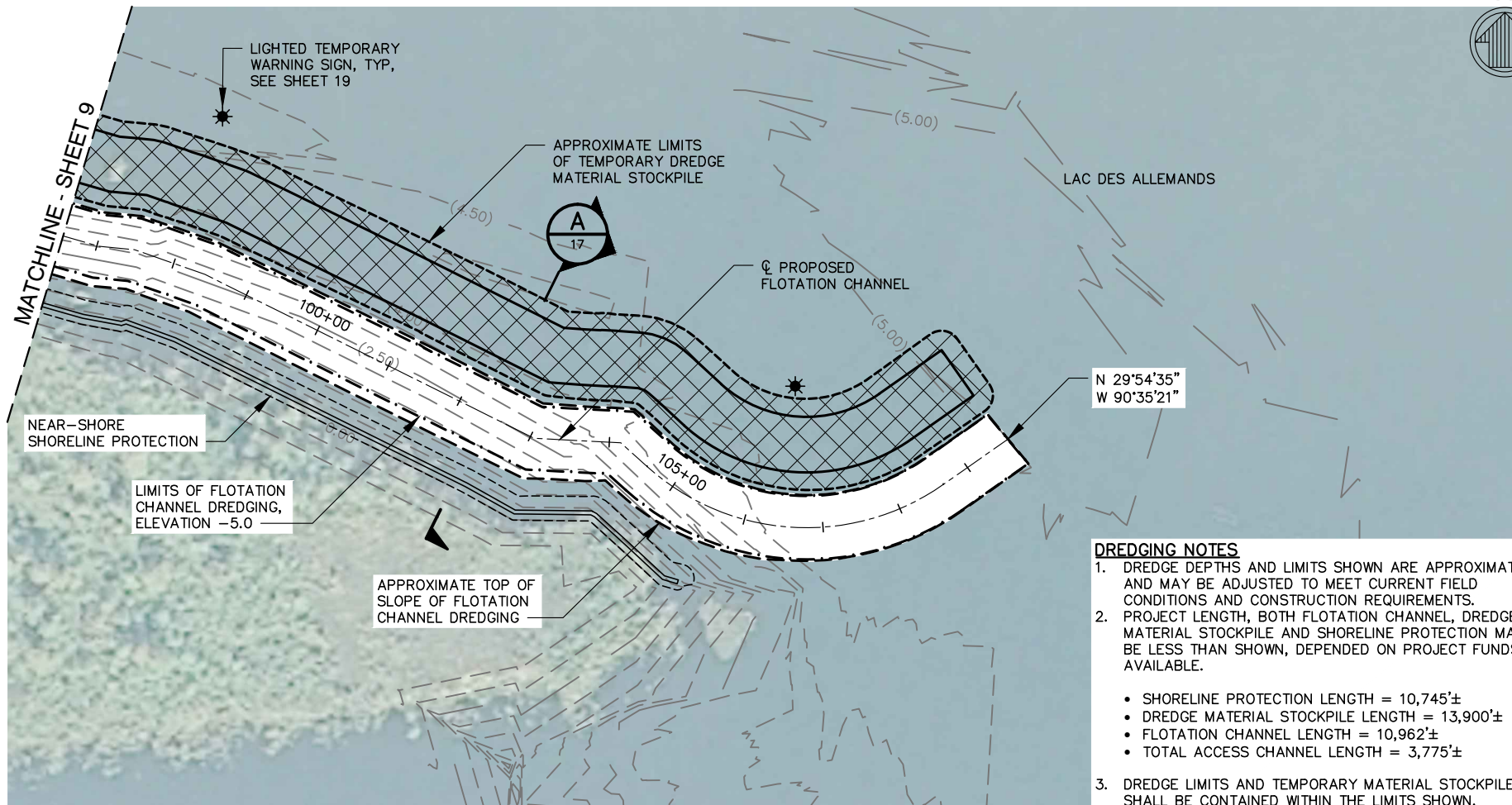
**WEST LAC DES ALLEMANDS
SHORELINE PROTECTION**

PERMITTING AGENCIES: USACE AND
LA DEPT OF NATURAL RESOURCES

PREPARED BY: MOFFATT & NICHOL

SHEET 9 OF 20 DATE: JULY 2012

SEAL



DREDGING NOTES

1. DREDGE DEPTHS AND LIMITS SHOWN ARE APPROXIMATE AND MAY BE ADJUSTED TO MEET CURRENT FIELD CONDITIONS AND CONSTRUCTION REQUIREMENTS.
2. PROJECT LENGTH, BOTH FLOTATION CHANNEL, DREDGE MATERIAL STOCKPILE AND SHORELINE PROTECTION MAY BE LESS THAN SHOWN, DEPENDED ON PROJECT FUNDS AVAILABLE.
 - SHORELINE PROTECTION LENGTH = 10,745'±
 - DREDGE MATERIAL STOCKPILE LENGTH = 13,900'±
 - FLOTATION CHANNEL LENGTH = 10,962'±
 - TOTAL ACCESS CHANNEL LENGTH = 3,775'±
3. DREDGE LIMITS AND TEMPORARY MATERIAL STOCKPILE SHALL BE CONTAINED WITHIN THE LIMITS SHOWN.
4. ESTIMATED DREDGE VOLUME FOR FLOTATION CHANNEL IS 90,500 C.Y.
5. ESTIMATED DISTURBANCE AREA FOR DREDGING AND MATERIAL STOCKPILE IS 63 ACRES.
6. VESSEL DRAFTS SHALL BE LIMITED TO 4 FEET.
7. FOR ADDITIONAL NOTES SEE SHEET 18.

PURPOSE: WEST LAC DES ALLEMANDS
SHORELINE PROTECTION

DATUM: NAD 83

DREDGING PLAN – 7 OF 7

SCALE: 1"=200'

APPLICATION BY:
ST. JOHN THE BAPTIST PARISH
LOUISIANA

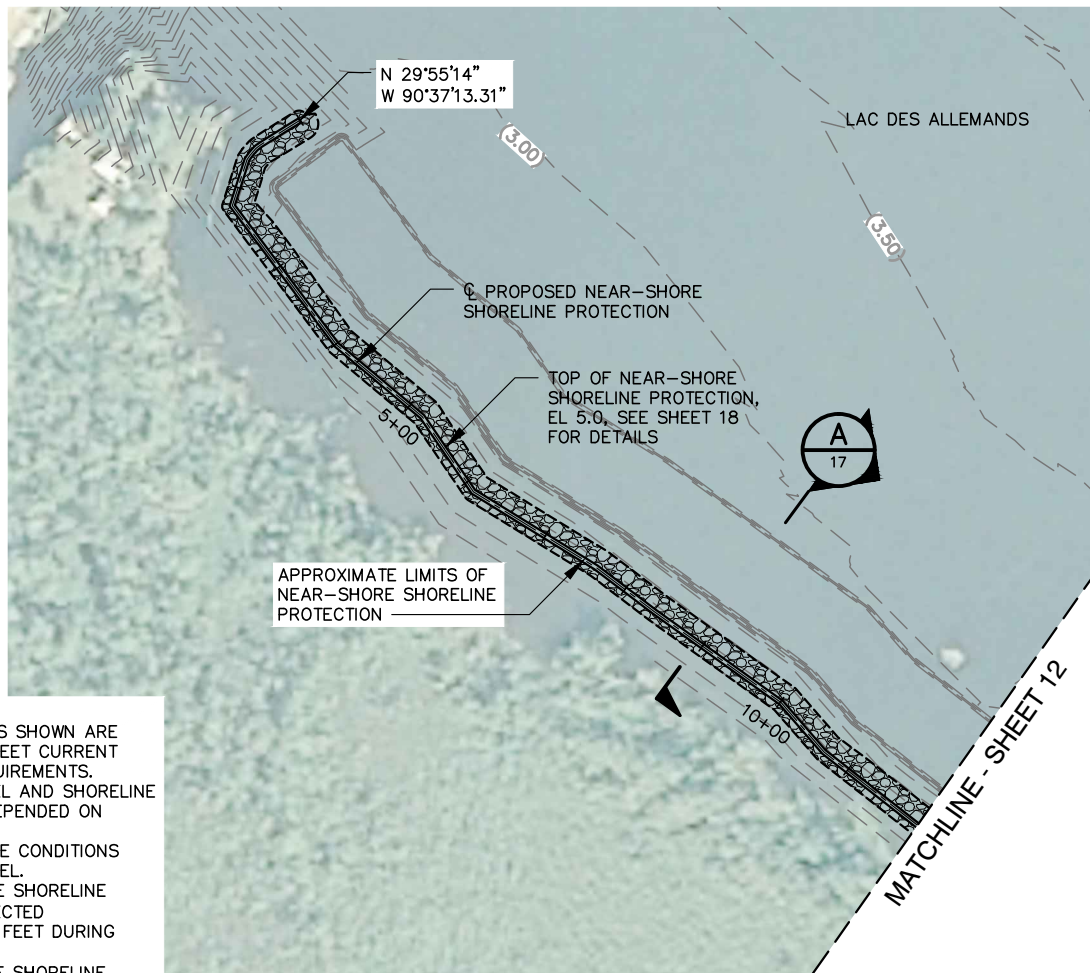
**WEST LAC DES ALLEMANDS
SHORELINE PROTECTION**

PERMITTING AGENCIES: USACE AND
LA DEPT OF NATURAL RESOURCES

PREPARED BY: MOFFATT & NICHOL

SHEET 10 OF 20 DATE: JULY 2012


SEAL



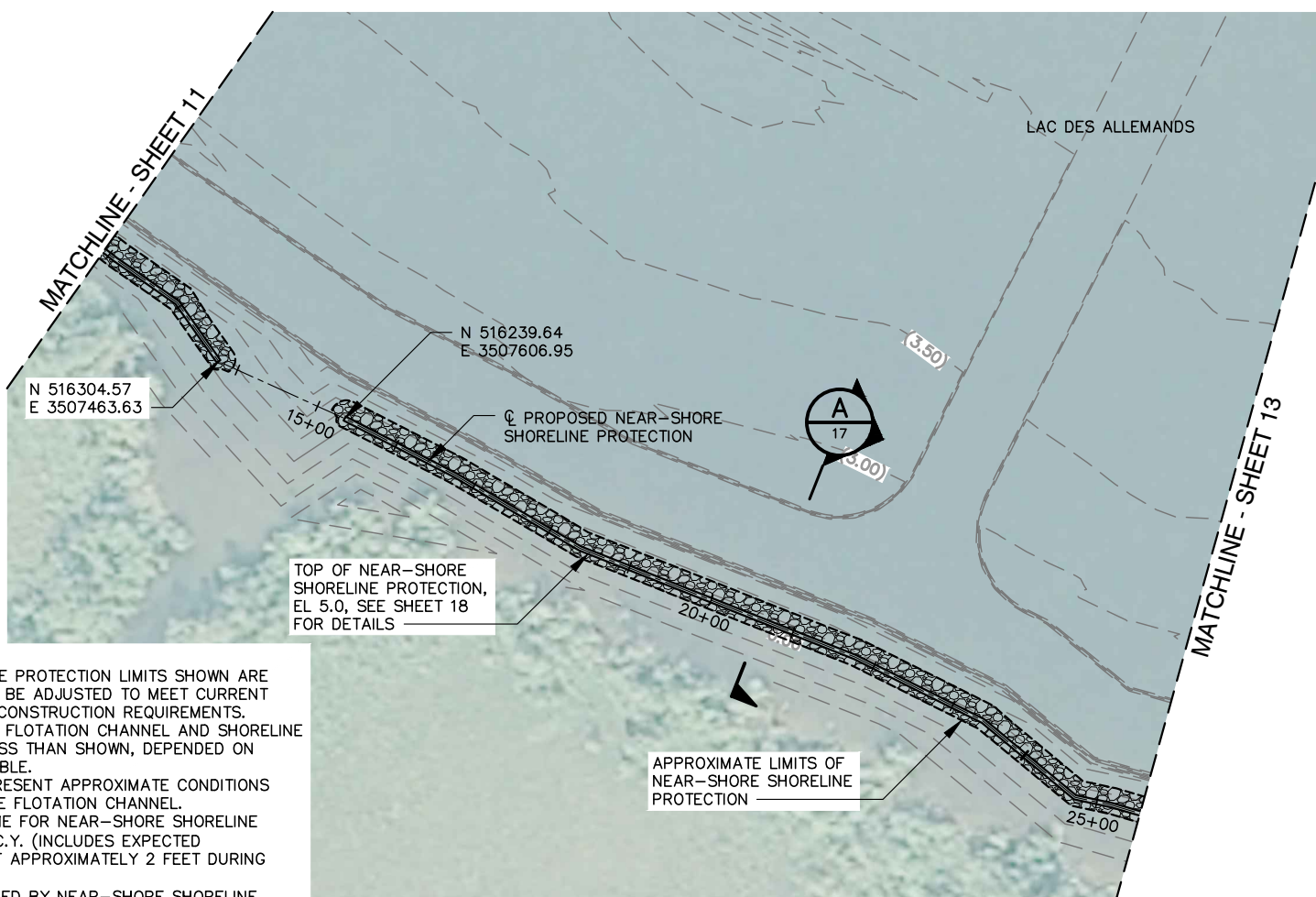
CONSTRUCTION NOTES

1. NEAR-SHORE SHORELINE PROTECTION LIMITS SHOWN ARE APPROXIMATE AND MAY BE ADJUSTED TO MEET CURRENT FIELD CONDITIONS AND CONSTRUCTION REQUIREMENTS.
2. PROJECT LENGTH, BOTH FLOTATION CHANNEL AND SHORELINE PROTECTION MAY BE LESS THAN SHOWN, DEPENDED ON PROJECT FUNDS AVAILABLE.
3. CONTOURS SHOWN REPRESENT APPROXIMATE CONDITIONS AFTER DREDGING OF THE FLOTATION CHANNEL.
4. ESTIMATED ROCK VOLUME FOR NEAR-SHORE SHORELINE PROTECTION IS 62,100 C.Y. (INCLUDES EXPECTED SETTLEMENT VOLUME OF APPROXIMATELY 2 FEET DURING CONSTRUCTION).
5. ESTIMATED AREA COVERED BY NEAR-SHORE SHORELINE PROTECTION IS 7.0 ACRES.
6. FLOTATION CHANNEL SHALL BE BACKFILLED PRIOR TO DEMOBILIZATION.
7. ALL CONSTRUCTION ACTIVITIES SHALL BE PERFORMED FROM THE WATER.
8. FOR ADDITIONAL NOTES SEE SHEET 18.

SEAL

PURPOSE: WEST LAC DES ALLEMANDS SHORELINE PROTECTION DATUM: NAD 83	SHORELINE PROTECTION PLAN - 1 OF 7  SCALE: 1"=200' APPLICATION BY: ST. JOHN THE BAPTIST PARISH LOUISIANA
--	--

WEST LAC DES ALLEMANDS SHORELINE PROTECTION PERMITTING AGENCIES: USACE AND LA DEPT OF NATURAL RESOURCES PREPARED BY: MOFFATT & NICHOL SHEET 11 OF 20 DATE: JULY 2012
--



CONSTRUCTION NOTES

1. NEAR-SHORE SHORELINE PROTECTION LIMITS SHOWN ARE APPROXIMATE AND MAY BE ADJUSTED TO MEET CURRENT FIELD CONDITIONS AND CONSTRUCTION REQUIREMENTS.
2. PROJECT LENGTH, BOTH FLOTATION CHANNEL AND SHORELINE PROTECTION MAY BE LESS THAN SHOWN, DEPENDED ON PROJECT FUNDS AVAILABLE.
3. CONTOURS SHOWN REPRESENT APPROXIMATE CONDITIONS AFTER DREDGING OF THE FLOTATION CHANNEL.
4. ESTIMATED ROCK VOLUME FOR NEAR-SHORE SHORELINE PROTECTION IS 62,100 C.Y. (INCLUDES EXPECTED SETTLEMENT VOLUME OF APPROXIMATELY 2 FEET DURING CONSTRUCTION).
5. ESTIMATED AREA COVERED BY NEAR-SHORE SHORELINE PROTECTION IS 7.0 ACRES.
6. FLOTATION CHANNEL SHALL BE BACKFILLED PRIOR TO DEMOBILIZATION.
7. ALL CONSTRUCTION ACTIVITIES SHALL BE PERFORMED FROM THE WATER.
8. FOR ADDITIONAL NOTES SEE SHEET 18.

APPROXIMATE LIMITS OF NEAR-SHORE SHORELINE PROTECTION

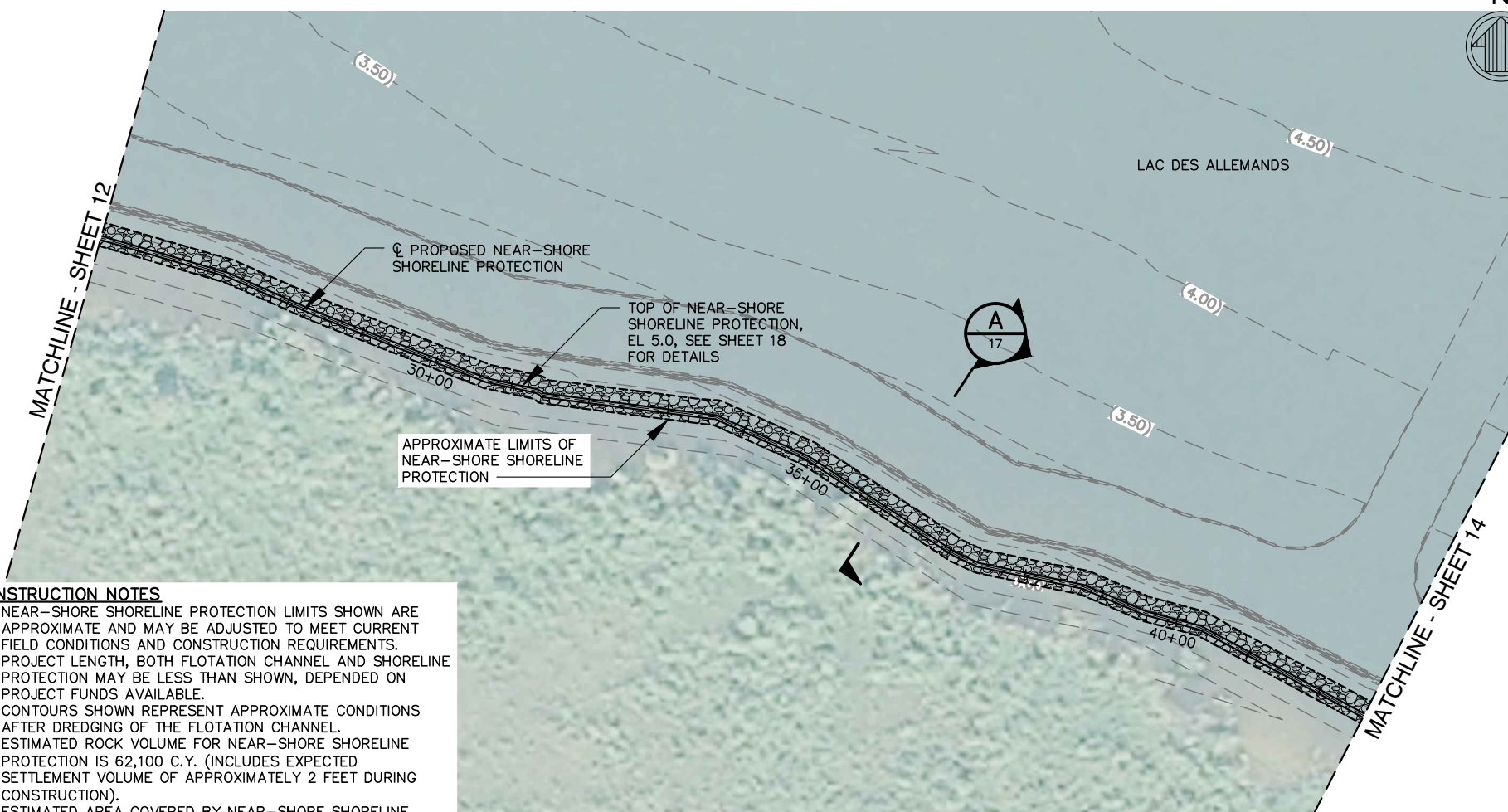
TOP OF NEAR-SHORE SHORELINE PROTECTION, EL 5.0, SEE SHEET 18 FOR DETAILS

SEAL

PURPOSE: WEST LAC DES ALLEMANDS SHORELINE PROTECTION
 DATUM: NAD 83

SHORELINE PROTECTION PLAN - 2 OF 7
 SCALE: 1"=200'
 APPLICATION BY:
 ST. JOHN THE BAPTIST PARISH
 LOUISIANA

WEST LAC DES ALLEMANDS SHORELINE PROTECTION
 PERMITTING AGENCIES: USACE AND LA DEPT OF NATURAL RESOURCES
 PREPARED BY: MOFFATT & NICHOL
 SHEET 12 OF 20 DATE: JULY 2012



CONSTRUCTION NOTES

1. NEAR-SHORE SHORELINE PROTECTION LIMITS SHOWN ARE APPROXIMATE AND MAY BE ADJUSTED TO MEET CURRENT FIELD CONDITIONS AND CONSTRUCTION REQUIREMENTS.
2. PROJECT LENGTH, BOTH FLOTATION CHANNEL AND SHORELINE PROTECTION MAY BE LESS THAN SHOWN, DEPENDED ON PROJECT FUNDS AVAILABLE.
3. CONTOURS SHOWN REPRESENT APPROXIMATE CONDITIONS AFTER DREDGING OF THE FLOTATION CHANNEL.
4. ESTIMATED ROCK VOLUME FOR NEAR-SHORE SHORELINE PROTECTION IS 62,100 C.Y. (INCLUDES EXPECTED SETTLEMENT VOLUME OF APPROXIMATELY 2 FEET DURING CONSTRUCTION).
5. ESTIMATED AREA COVERED BY NEAR-SHORE SHORELINE PROTECTION IS 7.0 ACRES.
6. FLOTATION CHANNEL SHALL BE BACKFILLED PRIOR TO DEMOBILIZATION.
7. ALL CONSTRUCTION ACTIVITIES SHALL BE PERFORMED FROM THE WATER.
8. FOR ADDITIONAL NOTES SEE SHEET 18.

SEAL

PURPOSE: WEST LAC DES ALLEMANDS
SHORELINE PROTECTION

DATUM: NAD 83

SHORELINE PROTECTION PLAN - 3 OF 7



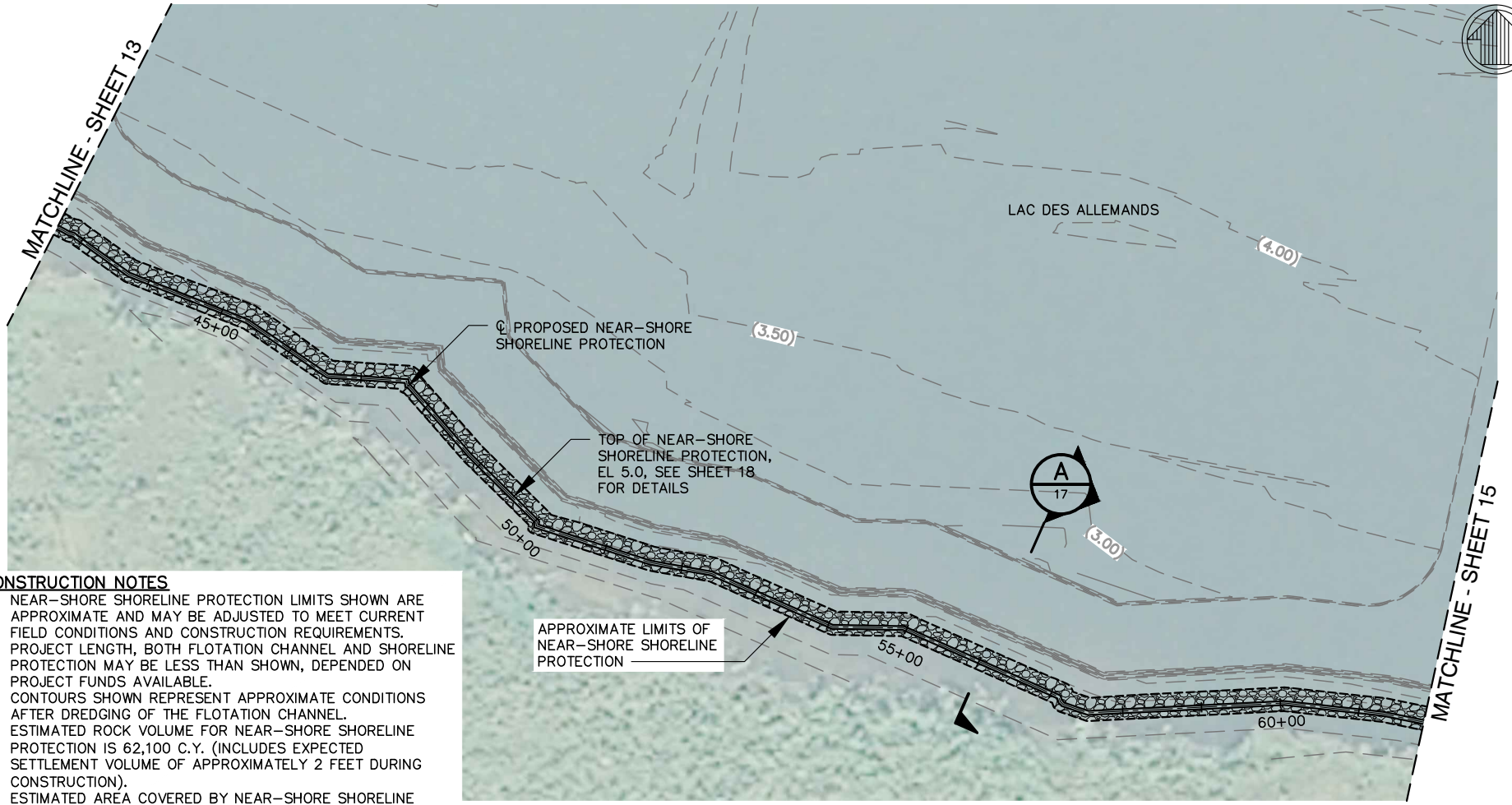
SCALE: 1"=200'

APPLICATION BY:
ST. JOHN THE BAPTIST PARISH
LOUISIANA

WEST LAC DES ALLEMANDS
SHORELINE PROTECTION

PERMITTING AGENCIES: USACE AND
LA DEPT OF NATURAL RESOURCES

PREPARED BY: MOFFATT & NICHOL
SHEET 13 OF 20 DATE: JULY 2012



CONSTRUCTION NOTES

1. NEAR-SHORE SHORELINE PROTECTION LIMITS SHOWN ARE APPROXIMATE AND MAY BE ADJUSTED TO MEET CURRENT FIELD CONDITIONS AND CONSTRUCTION REQUIREMENTS.
2. PROJECT LENGTH, BOTH FLOTATION CHANNEL AND SHORELINE PROTECTION MAY BE LESS THAN SHOWN, DEPENDED ON PROJECT FUNDS AVAILABLE.
3. CONTOURS SHOWN REPRESENT APPROXIMATE CONDITIONS AFTER DREDGING OF THE FLOTATION CHANNEL.
4. ESTIMATED ROCK VOLUME FOR NEAR-SHORE SHORELINE PROTECTION IS 62,100 C.Y. (INCLUDES EXPECTED SETTLEMENT VOLUME OF APPROXIMATELY 2 FEET DURING CONSTRUCTION).
5. ESTIMATED AREA COVERED BY NEAR-SHORE SHORELINE PROTECTION IS 7.0 ACRES.
6. FLOTATION CHANNEL SHALL BE BACKFILLED PRIOR TO DEMOBILIZATION.
7. ALL CONSTRUCTION ACTIVITIES SHALL BE PERFORMED FROM THE WATER.
8. FOR ADDITIONAL NOTES SEE SHEET 18.

APPROXIMATE LIMITS OF NEAR-SHORE SHORELINE PROTECTION

SEAL

PURPOSE: WEST LAC DES ALLEMANDS SHORELINE PROTECTION

DATUM: NAD 83

SHORELINE PROTECTION PLAN - 4 OF 7

SCALE: 1"=200'

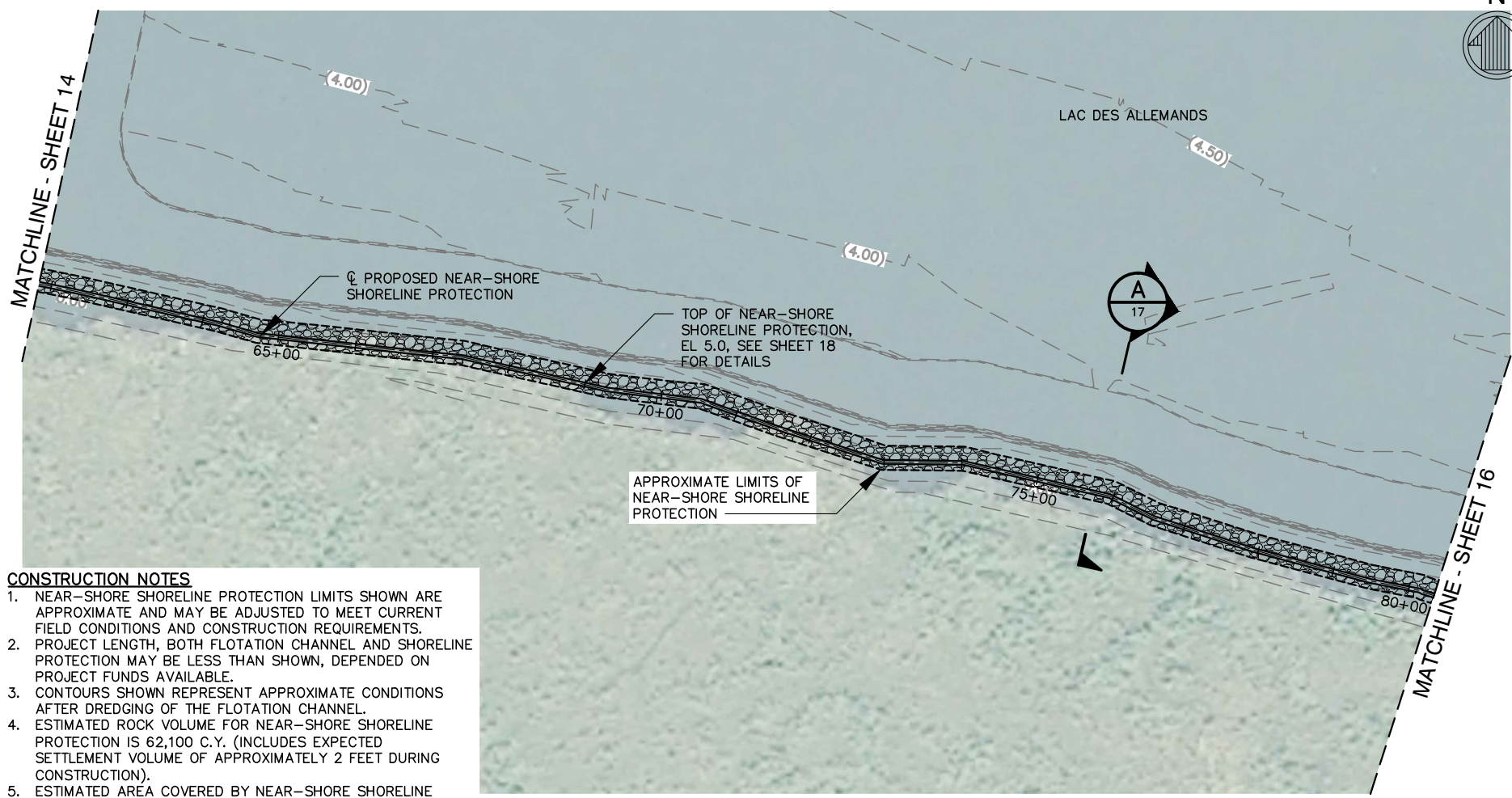
APPLICATION BY:
ST. JOHN THE BAPTIST PARISH
LOUISIANA

WEST LAC DES ALLEMANDS SHORELINE PROTECTION

PERMITTING AGENCIES: USACE AND LA DEPT OF NATURAL RESOURCES

PREPARED BY: MOFFATT & NICHOL

SHEET 14 OF 20 DATE: JULY 2012



CONSTRUCTION NOTES

1. NEAR-SHORE SHORELINE PROTECTION LIMITS SHOWN ARE APPROXIMATE AND MAY BE ADJUSTED TO MEET CURRENT FIELD CONDITIONS AND CONSTRUCTION REQUIREMENTS.
2. PROJECT LENGTH, BOTH FLOTATION CHANNEL AND SHORELINE PROTECTION MAY BE LESS THAN SHOWN, DEPENDED ON PROJECT FUNDS AVAILABLE.
3. CONTOURS SHOWN REPRESENT APPROXIMATE CONDITIONS AFTER DREDGING OF THE FLOTATION CHANNEL.
4. ESTIMATED ROCK VOLUME FOR NEAR-SHORE SHORELINE PROTECTION IS 62,100 C.Y. (INCLUDES EXPECTED SETTLEMENT VOLUME OF APPROXIMATELY 2 FEET DURING CONSTRUCTION).
5. ESTIMATED AREA COVERED BY NEAR-SHORE SHORELINE PROTECTION IS 7.0 ACRES.
6. FLOTATION CHANNEL SHALL BE BACKFILLED PRIOR TO DEMOBILIZATION.
7. ALL CONSTRUCTION ACTIVITIES SHALL BE PERFORMED FROM THE WATER.
8. FOR ADDITIONAL NOTES SEE SHEET 18.

SEAL

PURPOSE: WEST LAC DES ALLEMANDS
SHORELINE PROTECTION

DATUM: NAD 83

SHORELINE PROTECTION PLAN - 5 OF 7

SCALE: 1"=200'

APPLICATION BY:
ST. JOHN THE BAPTIST PARISH
LOUISIANA

WEST LAC DES ALLEMANDS
SHORELINE PROTECTION

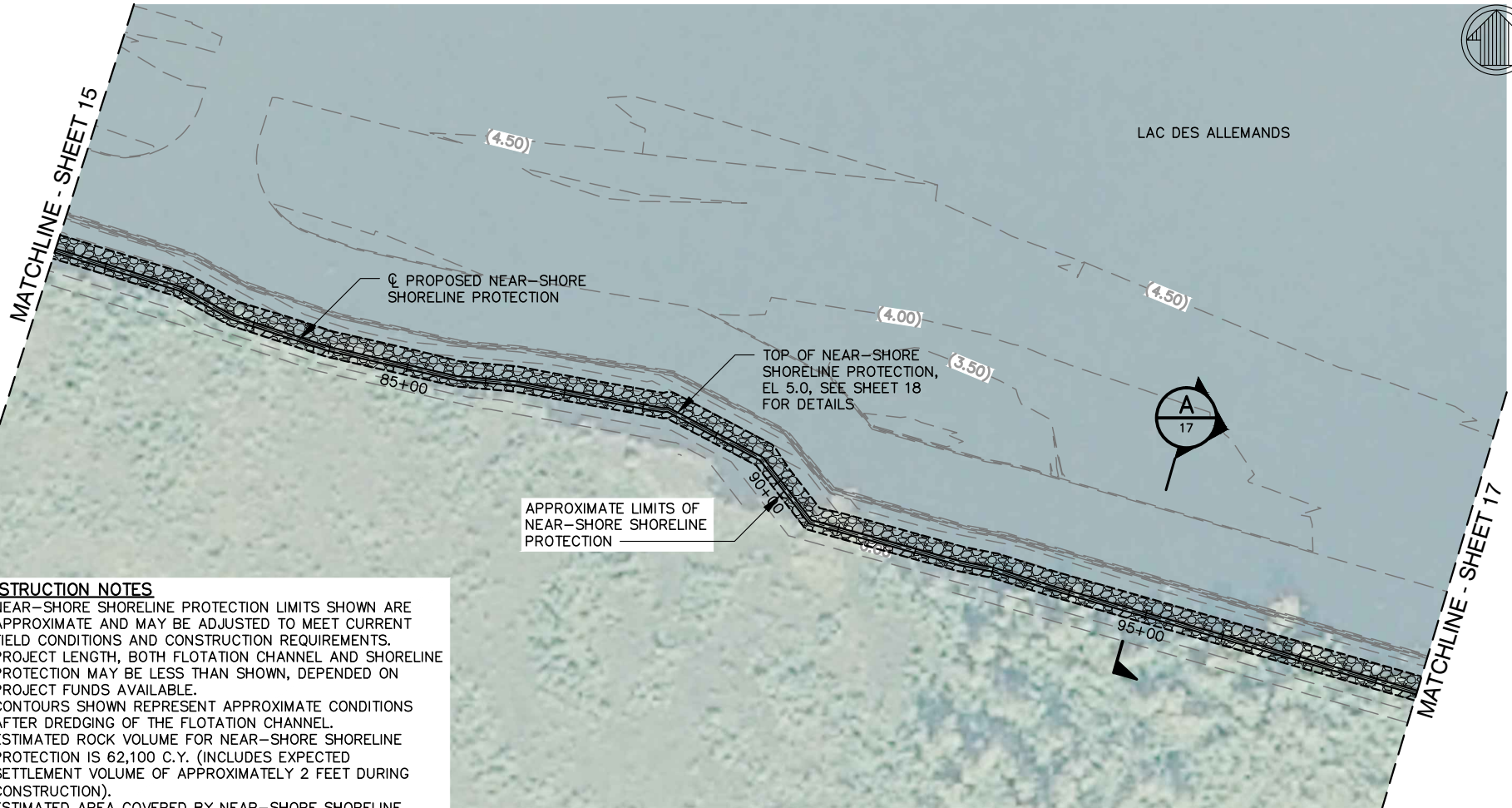
PERMITTING AGENCIES: USACE AND
LA DEPT OF NATURAL RESOURCES

PREPARED BY: MOFFATT & NICHOL

SHEET 15 OF 20 DATE: JULY 2012



LAC DES ALLEMANDS



CL PROPOSED NEAR-SHORE SHORELINE PROTECTION

TOP OF NEAR-SHORE SHORELINE PROTECTION, EL 5.0, SEE SHEET 18 FOR DETAILS

APPROXIMATE LIMITS OF NEAR-SHORE SHORELINE PROTECTION

CONSTRUCTION NOTES

1. NEAR-SHORE SHORELINE PROTECTION LIMITS SHOWN ARE APPROXIMATE AND MAY BE ADJUSTED TO MEET CURRENT FIELD CONDITIONS AND CONSTRUCTION REQUIREMENTS.
2. PROJECT LENGTH, BOTH FLOTATION CHANNEL AND SHORELINE PROTECTION MAY BE LESS THAN SHOWN, DEPENDED ON PROJECT FUNDS AVAILABLE.
3. CONTOURS SHOWN REPRESENT APPROXIMATE CONDITIONS AFTER DREDGING OF THE FLOTATION CHANNEL.
4. ESTIMATED ROCK VOLUME FOR NEAR-SHORE SHORELINE PROTECTION IS 62,100 C.Y. (INCLUDES EXPECTED SETTLEMENT VOLUME OF APPROXIMATELY 2 FEET DURING CONSTRUCTION).
5. ESTIMATED AREA COVERED BY NEAR-SHORE SHORELINE PROTECTION IS 7.0 ACRES.
6. FLOTATION CHANNEL SHALL BE BACKFILLED PRIOR TO DEMOBILIZATION.
7. ALL CONSTRUCTION ACTIVITIES SHALL BE PERFORMED FROM THE WATER.
8. FOR ADDITIONAL NOTES SEE SHEET 18.

SEAL

PURPOSE: WEST LAC DES ALLEMANDS SHORELINE PROTECTION

DATUM: NAD 83

SHORELINE PROTECTION PLAN - 6 OF 7

SCALE: 1"=200'

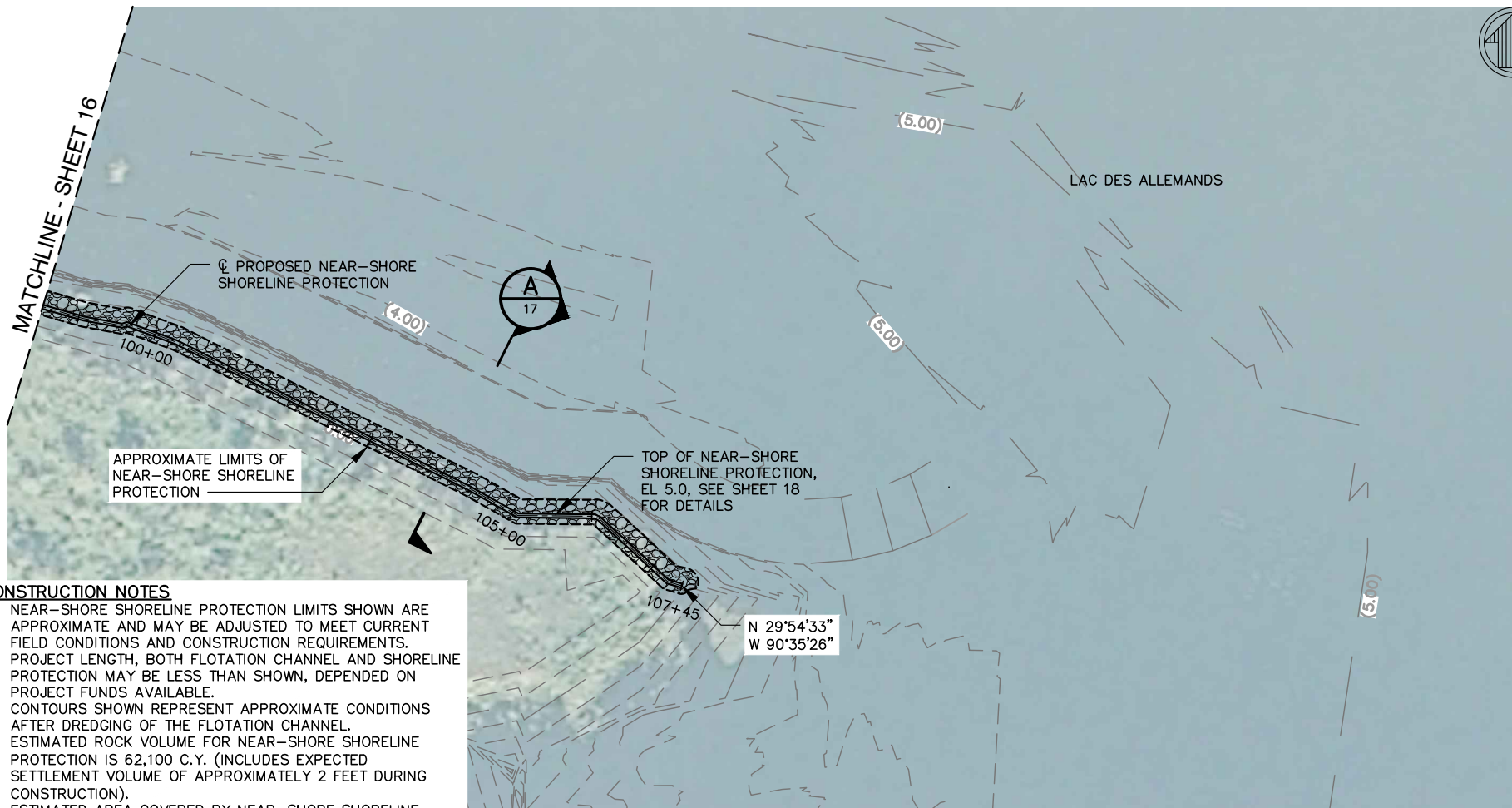
APPLICATION BY:
ST. JOHN THE BAPTIST PARISH
LOUISIANA

WEST LAC DES ALLEMANDS SHORELINE PROTECTION

PERMITTING AGENCIES: USACE AND LA DEPT OF NATURAL RESOURCES

PREPARED BY: MOFFATT & NICHOL

SHEET 16 OF 20 DATE: JULY 2012



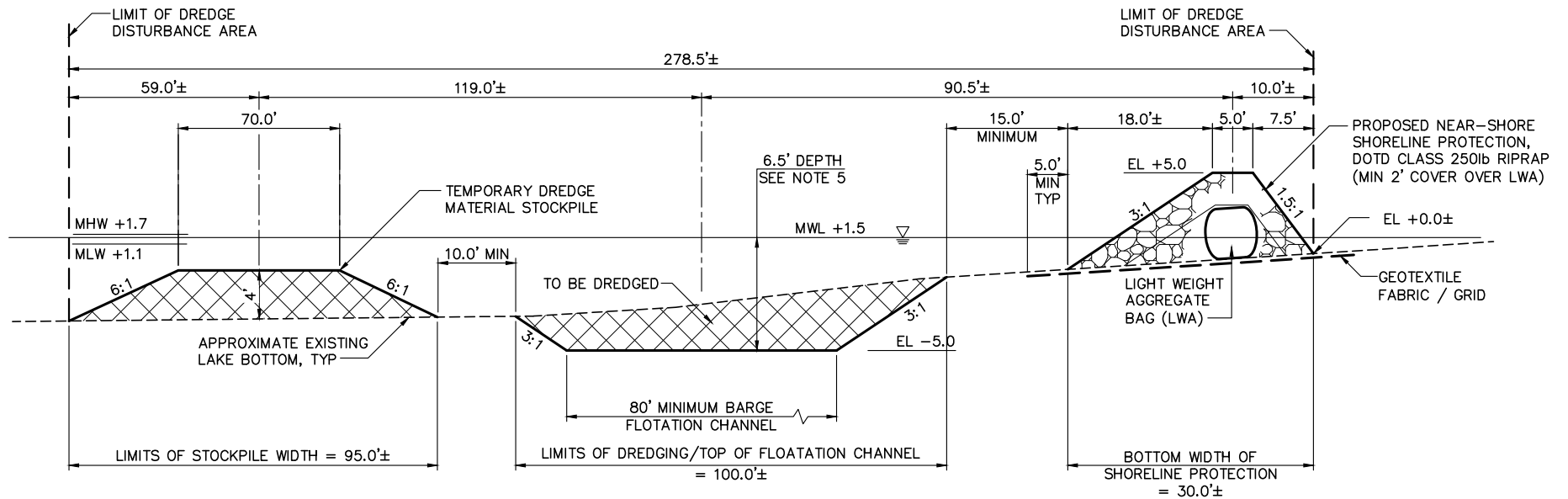
CONSTRUCTION NOTES

1. NEAR-SHORE SHORELINE PROTECTION LIMITS SHOWN ARE APPROXIMATE AND MAY BE ADJUSTED TO MEET CURRENT FIELD CONDITIONS AND CONSTRUCTION REQUIREMENTS.
2. PROJECT LENGTH, BOTH FLOTATION CHANNEL AND SHORELINE PROTECTION MAY BE LESS THAN SHOWN, DEPENDED ON PROJECT FUNDS AVAILABLE.
3. CONTOURS SHOWN REPRESENT APPROXIMATE CONDITIONS AFTER DREDGING OF THE FLOTATION CHANNEL.
4. ESTIMATED ROCK VOLUME FOR NEAR-SHORE SHORELINE PROTECTION IS 62,100 C.Y. (INCLUDES EXPECTED SETTLEMENT VOLUME OF APPROXIMATELY 2 FEET DURING CONSTRUCTION).
5. ESTIMATED AREA COVERED BY NEAR-SHORE SHORELINE PROTECTION IS 7.0 ACRES.
6. FLOTATION CHANNEL SHALL BE BACKFILLED PRIOR TO DEMOBILIZATION.
7. ALL CONSTRUCTION ACTIVITIES SHALL BE PERFORMED FROM THE WATER.
8. FOR ADDITIONAL NOTES SEE SHEET 18.

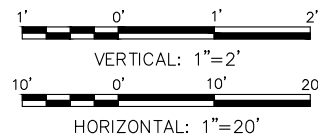
SEAL

PURPOSE: WEST LAC DES ALLEMANDS SHORELINE PROTECTION DATUM: NAD 83	SHORELINE PROTECTION PLAN - 7 OF 7  SCALE: 1"=200' APPLICATION BY: ST. JOHN THE BAPTIST PARISH LOUISIANA
---	--

WEST LAC DES ALLEMANDS SHORELINE PROTECTION PERMITTING AGENCIES: USACE AND LA DEPT OF NATURAL RESOURCES PREPARED BY: MOFFATT & NICHOL SHEET 17 OF 20 DATE: JULY 2012
--



A SECTION
18 AS NOTED



NOTES

- ELEVATIONS SHOWN REFERENCE NAVD 88.
- THE CONTRACTOR SHALL PERFORM A MAGNETOMETER SURVEY OF THE FLOTATION CHANNEL PRIOR TO ANY DREDGING ACTIVITIES.
- QUANTITIES AND AREAS SHOWN ON THE PLANS ARE BASED ON CONDITIONS AS SURVEYED, SEE SHEET 1 FOR ADDITIONAL SURVEY INFORMATION.
- VESSEL DRAFTS SHALL BE LIMITED TO 4 FEET.
- WATER DEPTH DEPENDS ON SEASONAL WATER LEVEL FLUCTUATIONS.

PURPOSE: WEST LAC DES ALLEMANDS SHORELINE PROTECTION

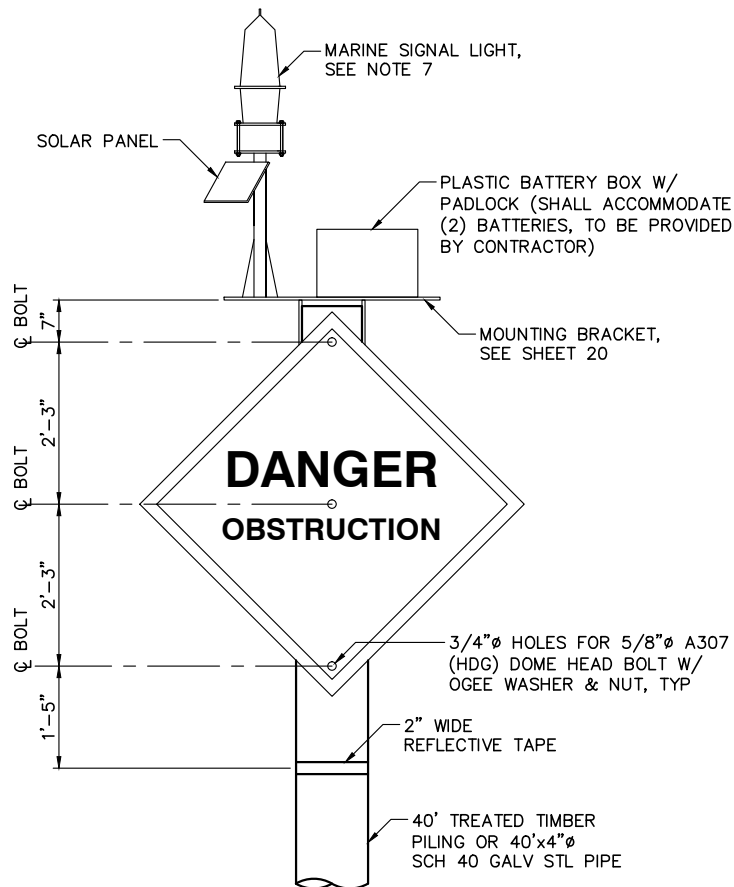
DATUM: NAD 83

TYPICAL SECTION
NOT TO SCALE

APPLICATION BY:
ST. JOHN THE BAPTIST PARISH
LOUISIANA

WEST LAC DES ALLEMANDS SHORELINE PROTECTION
PERMITTING AGENCIES: USACE AND LA DEPT OF NATURAL RESOURCES
PREPARED BY: MOFFATT & NICHOL
SHEET 18 OF 20 DATE: JULY 2012

SEAL



NOTES:

1. TEMPORARY WARNING SIGNS, INCLUDING PILES, SHALL BE INSTALLED AT LOCATIONS SHOWN ON SHEETS 3 THRU 9. THE 2 INCH BORDER ON THE WARNING SIGN SHALL BE A REFLECTIVE MATERIAL OF ORANGE COLOR. SIGN FACE SHALL BE A REFLECTIVE MATERIAL OF WHITE COLOR. THE LETTERING FOR THE WARNING SIGNS SHALL BE BLACK. ALL SIGNS MUST MEET U.S. COAST GUARD STANDARDS IN ACCORDANCE WITH 33 CFR 330.4 (a)(1).
2. HARDWARE FOR CONNECTIONS SHALL BE HOT DIP GALVANIZED IN ACCORDANCE WITH THE LOUISIANA STANDARD SPECIFICATIONS FOR ROADS AND BRIDGES, AS PUBLISHED BY THE LOUISIANA DEPARTMENT OF TRANSPORTATION AND DEVELOPMENT, LATEST EDITION.
3. TIMBER PILINGS SHALL BE 40 FEET IN LENGTH WITH A NOMINAL 12 INCH DIAMETER BUTT AND 7 INCH MINIMUM DIAMETER AT THE TIP.
4. TEMPORARY WARNING SIGNS ARE ONLY REQUIRED WHILE THE TEMPORARY STOCKPILE IS PRESENT. ALL TEMPORARY WARNING SIGNS SHALL BE PROMPTLY REMOVED AFTER THE TEMPORARY STOCKPILES HAVE BEEN BACKFILLED INTO THE EXCAVATED AREAS.
5. CONTRACTOR SHALL COORDINATE WITH THE U.S. COAST GUARD FOR ACTUAL WARNING LANGUAGE TO BE USED ON TEMPORARY WARNING SIGNS, REFER TO SPECIFICATION SECTION SP-4 "DELIVERABLES" PARAGRAPH 4.3.3 "DREDGING AIDS" FOR U.S. COAST GUARD PERMIT REQUIREMENTS.
6. REFER TO SPECIFICATION SECTION TS-810, "TEMPORARY WARNING SIGNS" FOR ADDITIONAL WARNING SIGN REQUIREMENTS.
7. MARINE SIGNAL LIGHT SHALL BE ML-155 MAXLUMINA MARINE SIGNAL LANTERN (MANUFACTURED BY TIDELAND SIGNAL CORPORATION, P.O. BOX 52370, O.C.S., LAFAYETTE, LA. 70505-2370, 800-824-0575) OR ENGINEER APPROVED ALTERNATE. LIGHT SHALL MEET REQUIREMENTS OF 33CFR FOR CLASS "C" STRUCTURES AND HAVE, AS MINIMUM, THE FOLLOWING PROPERTIES:

RANGE: 1 MILE
 LENSE: CLEAR
 SLOW FLASH: 2.5 SEC
 ELECTRIC RATING = 12V, 0.25A
 PEDESTAL LENGTH: 2.0'±
 SOLAR MODULE: 10W

LIGHTED TEMPORARY WARNING SIGN

PURPOSE: WEST LAC DES ALLEMANDS SHORELINE PROTECTION

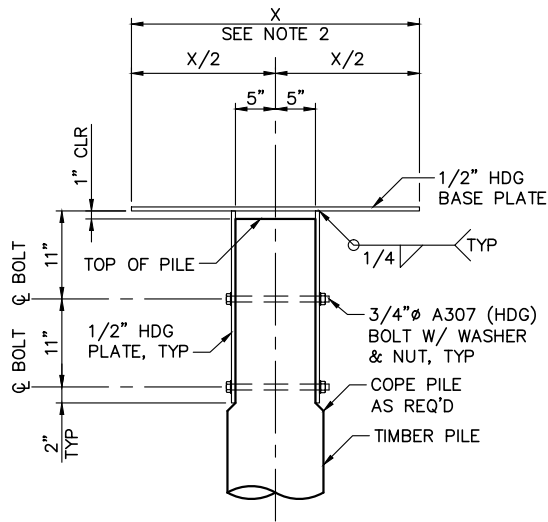
DATUM: NAD 83

DETAILS - 1 OF 2
 NOT TO SCALE

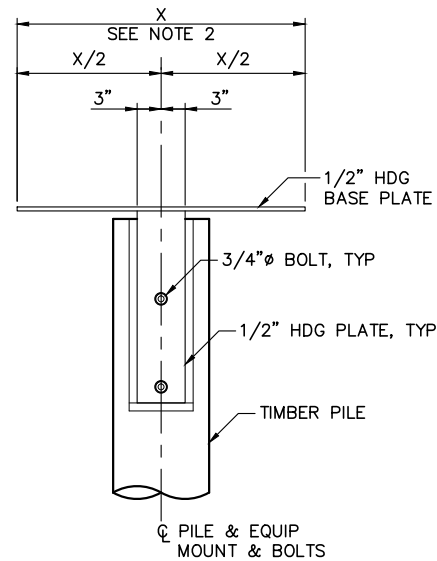
APPLICATION BY:
 ST. JOHN THE BAPTIST PARISH
 LOUISIANA

WEST LAC DES ALLEMANDS SHORELINE PROTECTION
 PERMITTING AGENCIES: USACE AND LA DEPT OF NATURAL RESOURCES
 PREPARED BY: MOFFATT & NICHOL
 SHEET 19 OF 20 DATE: JULY 2012

SEAL



FRONT ELEVATION



SIDE ELEVATION

NOTES:

1. WARNING SIGN AND EQUIPMENT NOT SHOWN FOR CLARITY.
2. SIZE BASE PLATE TO EQUIPMENT REQUIREMENTS.
ATTACH EQUIPMENT TO BASE PLATE AS PER MANUFACTURERS RECOMMENDATIONS.

MOUNTING BRACKET

SEAL

<p>PURPOSE: WEST LAC DES ALLEMANDS SHORELINE PROTECTION</p> <p>DATUM: NAD 83</p>	<p>DETAILS – 2 OF 2 NOT TO SCALE</p> <p>APPLICATION BY: ST. JOHN THE BAPTIST PARISH LOUISIANA</p>	<p>WEST LAC DES ALLEMANDS SHORELINE PROTECTION</p> <p>PERMITTING AGENCIES: USACE AND LA DEPT OF NATURAL RESOURCES</p> <p>PREPARED BY: MOFFATT & NICHOL</p> <p>SHEET 20 OF 20 DATE: JULY 2012</p>
--	---	--