



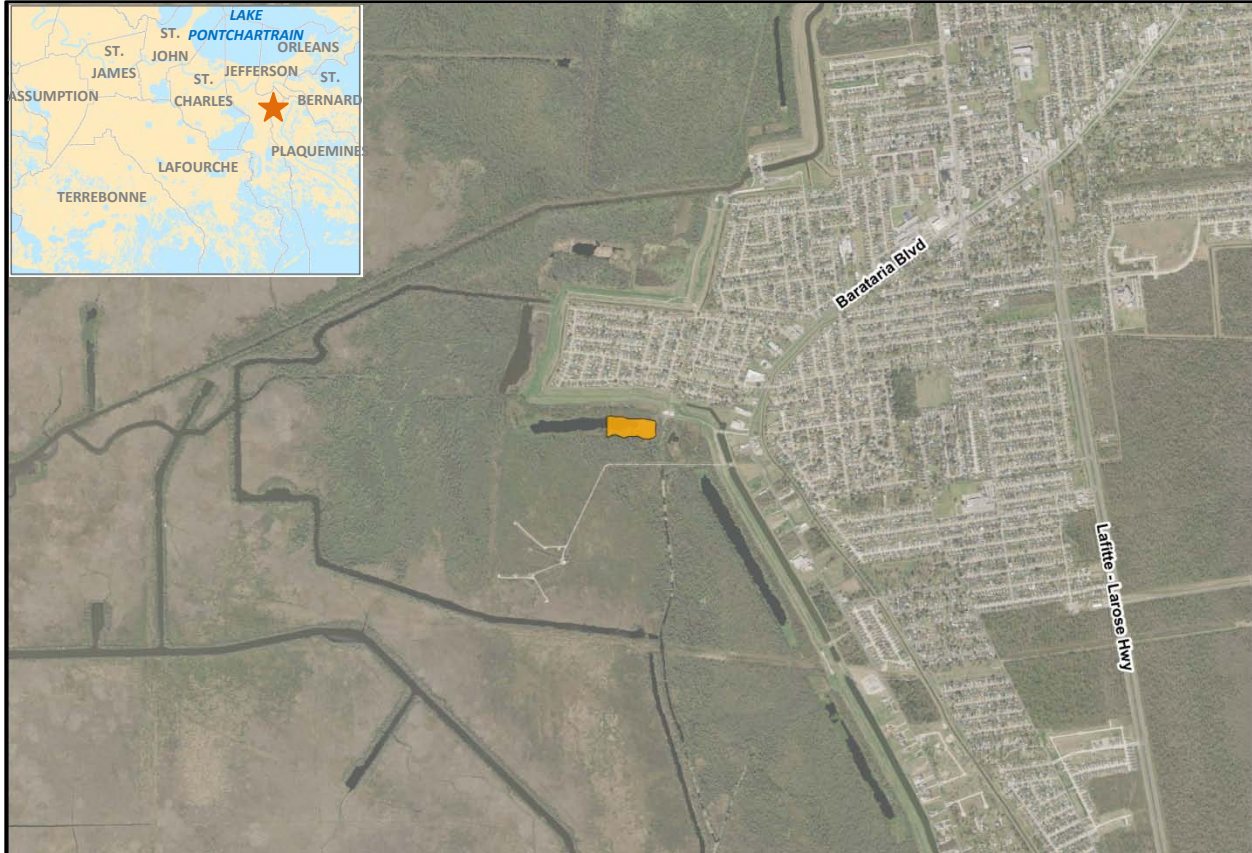
FACT SHEET: WBV HSDRRS MITIGATION

14 AUGUST 2012

U.S. ARMY CORPS OF ENGINEERS

BUILDING STRONG®

Park/404(c) Impacts – Jean Lafitte Bottomland Hardwood Wet



Project Purpose

The purpose of this project is to mitigate for the unavoidable impacts incurred to bottomland hardwood wet (BLH-Wet) habitat at the Jean Lafitte National Historical Park & Preserve during construction of the Hurricane & Storm Damage Risk Reduction System.

Project Location

This project is located within the Jean Lafitte National Park on the west bank of Jefferson Parish, Louisiana.

Features

Approximately 6 acres of BLH-Wet would be restored by filling a portion of a borrow pit in the northern part of Jean Lafitte National Park. The pit would be filled with clay and sand material trucked in from an offsite source, and native BLH-Wet species would be planted.

For more information, please visit www.nolaenvironmental.gov.

U.S. ARMY CORPS OF ENGINEERS – NEW ORLEANS DISTRICT

7400 LEAKE AVE., NEW ORLEANS, LA 70118

WWW.MVN.USACE.ARMY.MIL

www.facebook.com/usacenola

www.twitter.com/teamneworleans

www.flickr.com/teamneworleans