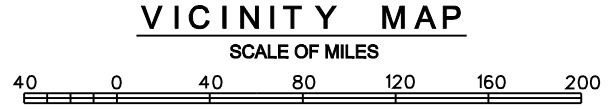
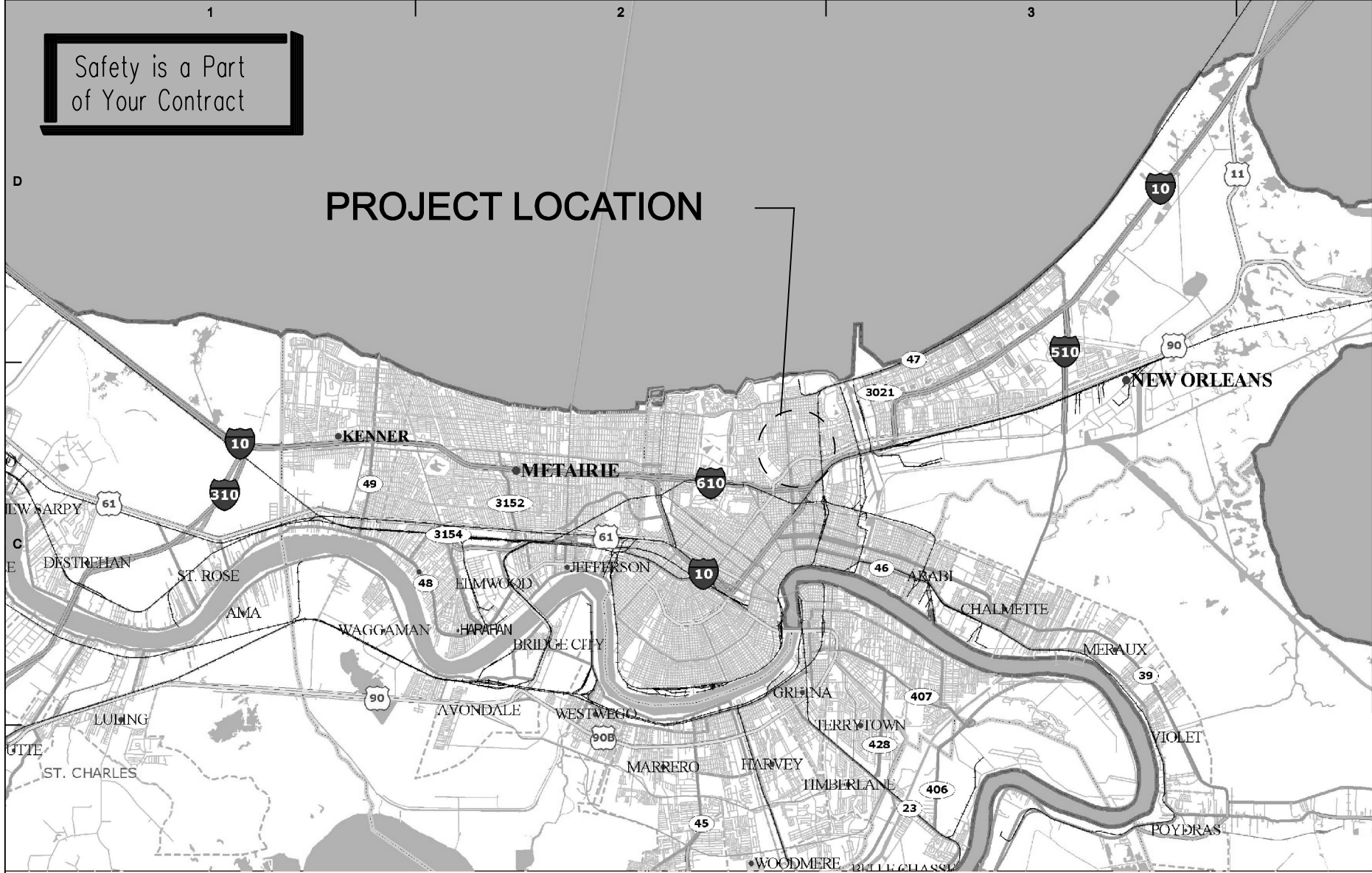


Safety is a Part
of Your Contract



**LAKE PONTCHARTRAIN AND VICINITY, NEW ORLEANS, LA
HURRICANE PROTECTION PROJECT
HURRICANE KATRINA REPAIRS AND MODIFICATIONS
ORLEANS PARISH, LOUISIANA**

LONDON AVENUE OUTFALL CANAL WALL LOAD TEST

INDEX OF DRAWINGS	
DRAWING	DESCRIPTION
1	VICINITY MAP I
2	VICINITY MAP II
3	WALL LOAD TEST DETAILS
4	WALL LOAD TEST DETAILS
5	WALL LOAD TEST DETAILS
6	PUMP SUPPORT FRAME
7	WALL LOAD TEST DETAILS
8	HYDROGRAPH

BENCH MARK DATA		
DESIGNATION	DESCRIPTION	ELEVATION
TBM	THE TBM IS ON THE ROBERT E. LEE BRIDGE THAT CROSSES THE LONDON AVENUE CANAL AND IS LOCATED ON THE BRIDGE RAILING ON THE NORTH SIDE OF THE BRIDGE AND AT THE WEST END OF THE RAILING. THE TBM IS A BRASS DISK LABELED "LONDON"	NAVD 88 8.84 FEET



DATE	DESCRIPTION	APPR.	MARK

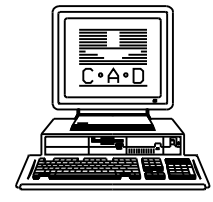
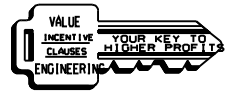
DESIGNED BY: LPS	DATE: MAY 2007	SOLICITATION NO.:	FILE NUMBER:
DWN BY: LCB	CONTRACT NO.:		
SUBMITTED BY: LCB			
FILE NAME: CHARLES P. BRANKSTETER I.N., P.E.			
SIZE: 34X22			

U. S. ARMY ENGINEER DISTRICT
CORPS OF ENGINEERS
MISSISSIPPI VALLEY DIVISION

LAKE PONTCHARTRAIN LOUISIANA
HURRICANE PROTECTION PROJECT
LONDON AVENUE CANAL WALL LOAD TEST
ORLEANS PARISH, LOUISIANA

COVERSHEET AND INDEX

SHEET IDENTIFICATION NUMBER
A





US ARMY CORPS
OF ENGINEERS
NEW ORLEANS DISTRICT

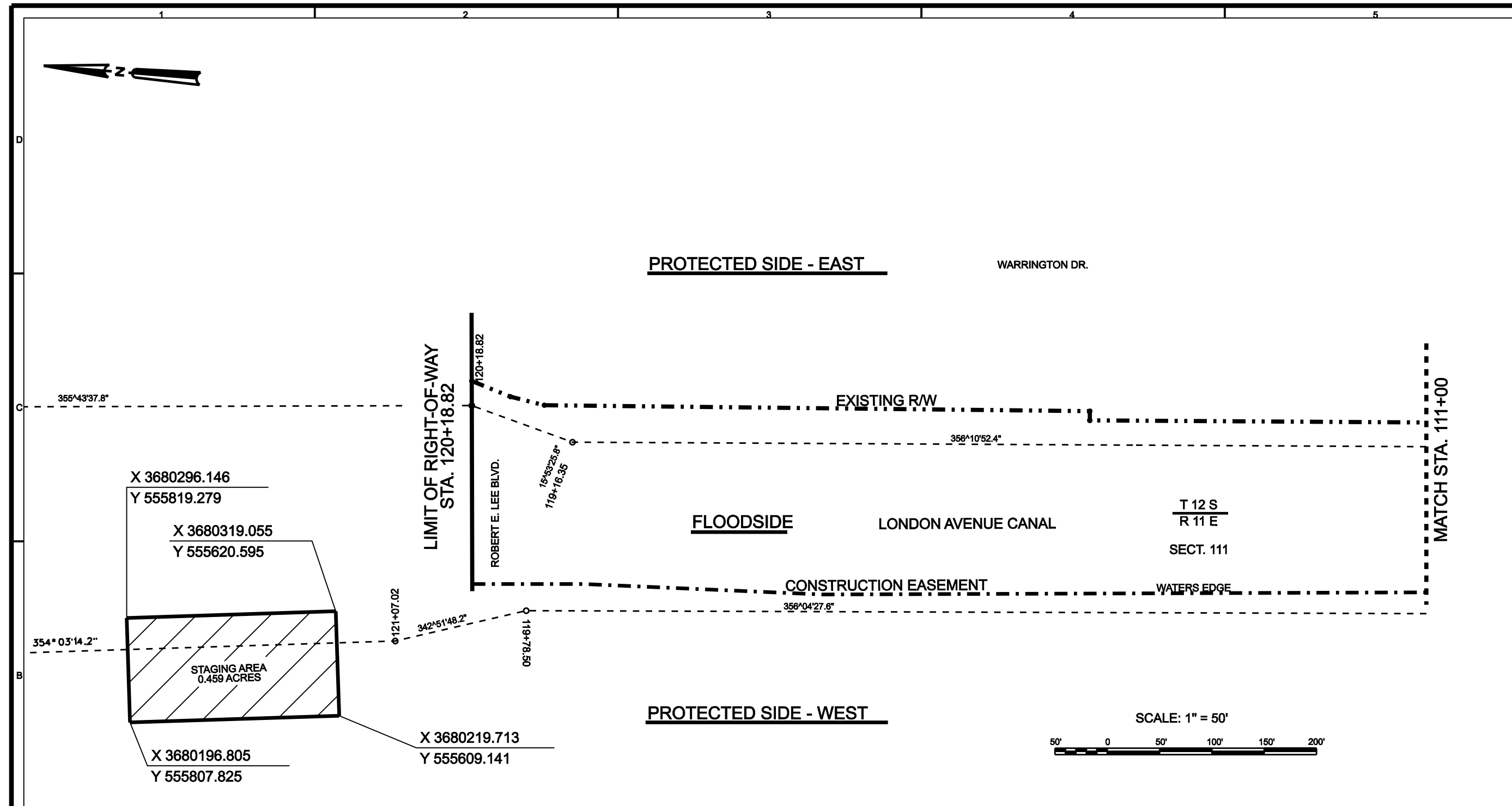
MARK	DESCRIPTION	DATE	APPR.

DATE	APRIL 2007
DESCRIPTION	W/SP-08-B-0000
CONTRACT NO.	W/SP-08-C-0000
PROJECT NO.	W/SP-08-C-0000
PROJECT NAME	LONDON AVENUE CANAL
PROJECT LOCATION	SECTION 111
PROJECT SCALE	1" = 50'
PROJECT DATE	11/14/2007

U.S. ARMY ENGINEER DISTRICT
CORPS OF ENGINEERS
MISSISSIPPI VALLEY DIVISION
LAKE PONTCHARTRAIN LOUISIANA
HURRICANE PROTECTION PROJECT
LONDON AVENUE CANAL WALL LOAD TEST
ORLEANS PARISH, LOUISIANA

VICINITY MAP I

SHEET
IDENTIFICATION
NUMBER
1 OF 8



STATIONING ALONG B/L	BASELINE OFFSET		AZIMUTH
	PROTECTED SIDE		
120+18.82	23.6'	85°05'44.35"	
119+87.02	20.9'	*	
119+53.78	23.5'	*	
114+50.50	32.3' - 23.5'	*	

* - ALL OFFSETS ARE 90° TO THE BASELINE UNLESS OTHERWISE STATED.

DATE	DESCRIPTION	MARK
JUN -07	REVISD TO AGREE WITH RFP 0002	1

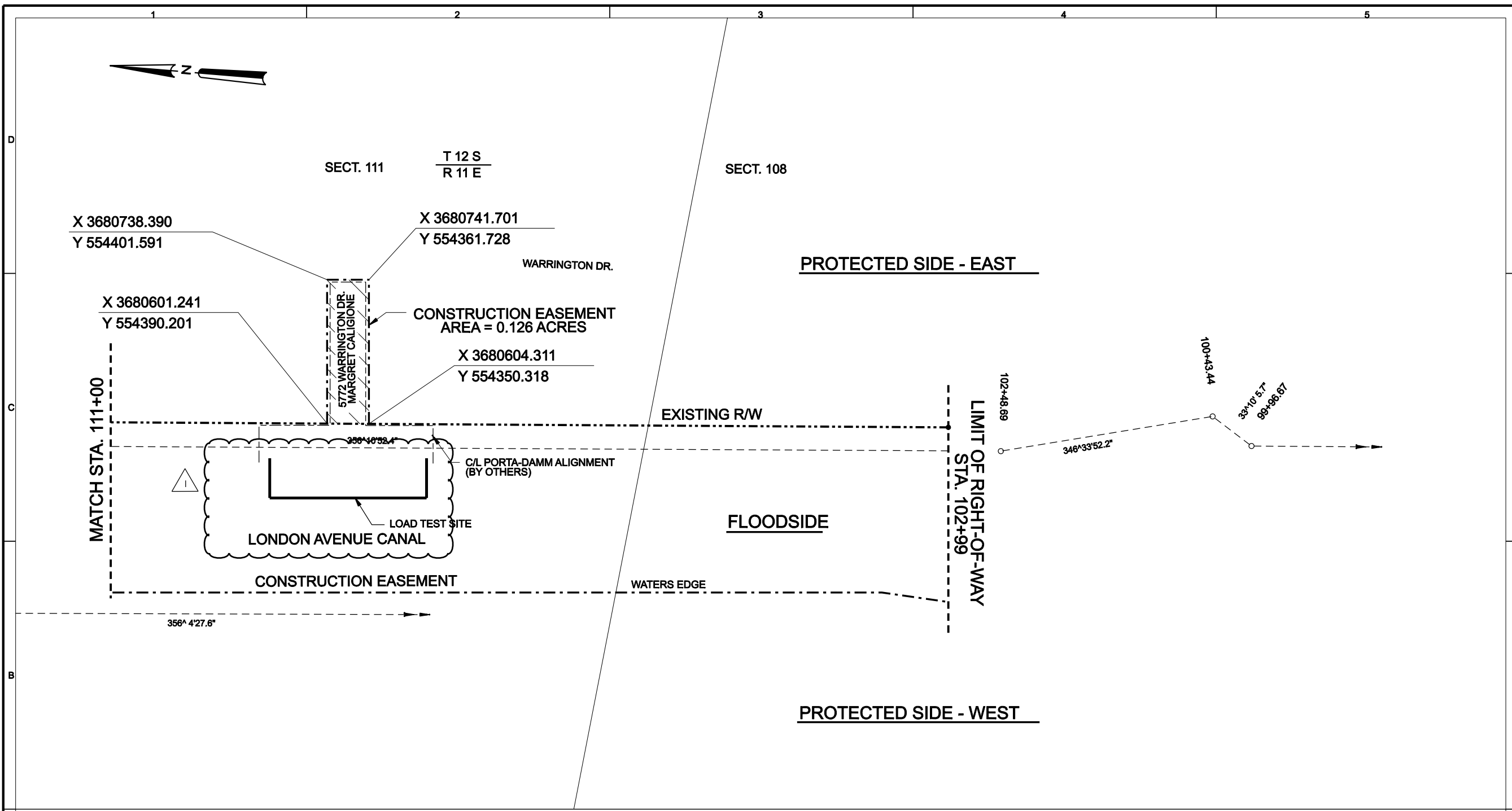
DATE	APRIL 2007
DESIGNED BY	CPB / DCA
DRAWN BY	XXX
CONTRACT NO.	W1272P-06-R-0161
PROJECT NO.	W1272P-06-000
FILE NUMBER	H-H-N-N-N-N-N-N
FLAT DATE	MM/DD/YYYY
FLAT SCALE	ANSI D 56.1

U.S. ARMY ENGINEER DISTRICT
CORPS OF ENGINEERS
MISSISSIPPI VALLEY DIVISION

LAKE PONCHARTRAIN LOUISIANA
HURRICANE PROTECTION PROJECT
LONDON AVENUE CANAL WALL LOAD TEST
ORLEANS PARISH, LOUISIANA

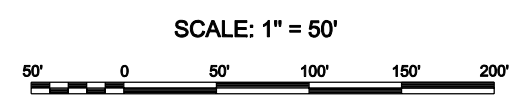
VICINITY MAP II

SHEET IDENTIFICATION NUMBER
2 OF 8

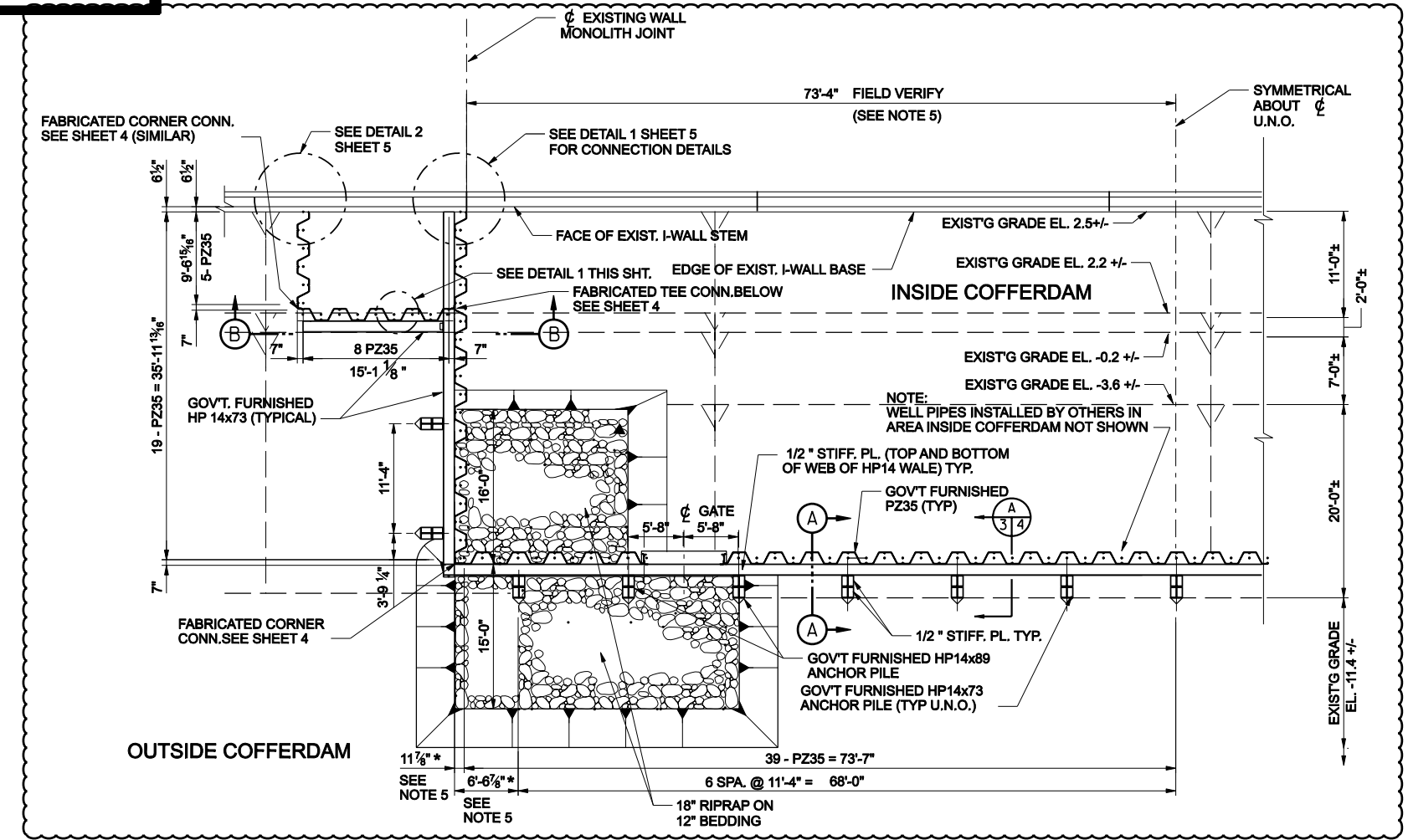
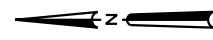


LIMITS OF EXISTING RIGHT-OF-WAY (EAST SIDE)		
STATIONING ALONG B/L	BASELINE OFFSET	AZIMUTH
	PROTECTED SIDE	
102+99.00	22.5'	*

* - ALL OFFSETS ARE 90° TO THE BASELINE UNLESS OTHERWISE STATED.



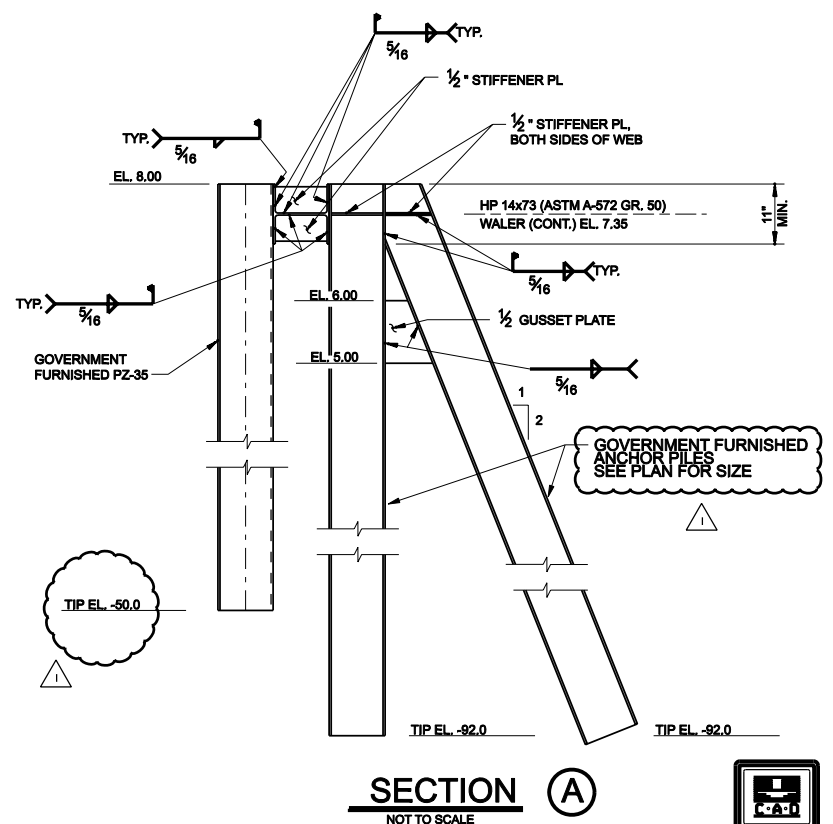
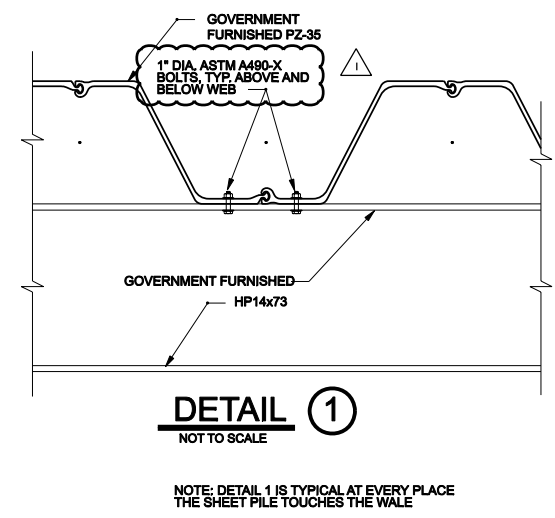
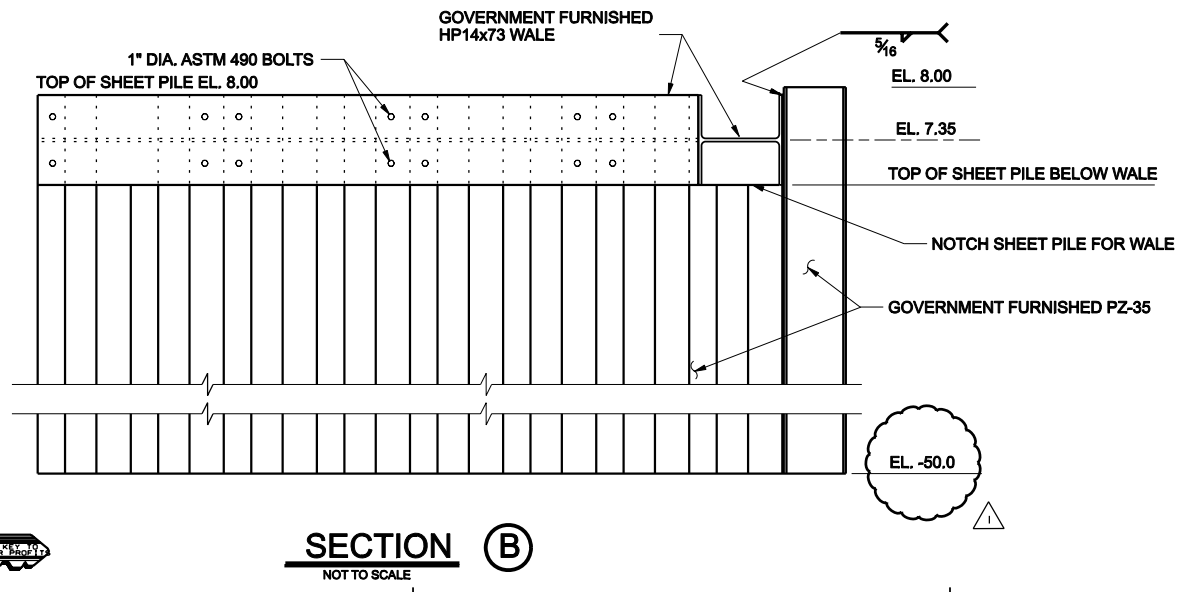
Safety is a Part of Your Contract



NOTES:

1. SOUTH SIDE IS SIMILAR, BUT OPPOSITE HAND, TO WHAT IS SHOWN ABOVE (EXCEPT ONLY ONE GATE).
2. PUMP SUPPORT SYSTEM NOT SHOWN FOR CLARITY. SEE SHEET 6.
3. PUMP FRAME NOT SHOWN FOR CLARITY. SEE SHEET 6 FOR DETAILS.
4. THE CONTRACTOR SHALL SEAL THE COFFERDAM SO THAT IT IS REASONABLY WATERTIGHT. SOME LEAKAGE IS ACCEPTABLE, BUT WATER SHOOTING FROM THE INTERLOCKS IS NOT ACCEPTABLE.
5. CONTRACTOR TO FIELD VERIFY DIMENSION BETWEEN 1/4 OF EXISTING MONOLITH JOINTS PRIOR TO FABRICATION. ADJUST DIMENSIONS DENOTED BY * TO FIT ACTUAL CONDITIONS.

PLAN VIEW



US ARMY CORPS OF ENGINEERS NEW ORLEANS DISTRICT

NO.	DATE	DESCRIPTION
1	JAN. 07	REVISED TO AGREE WITH RFP 002
	MARCH 26, 2007	CONTRACT NO. W912PB-06-D-00930 0025

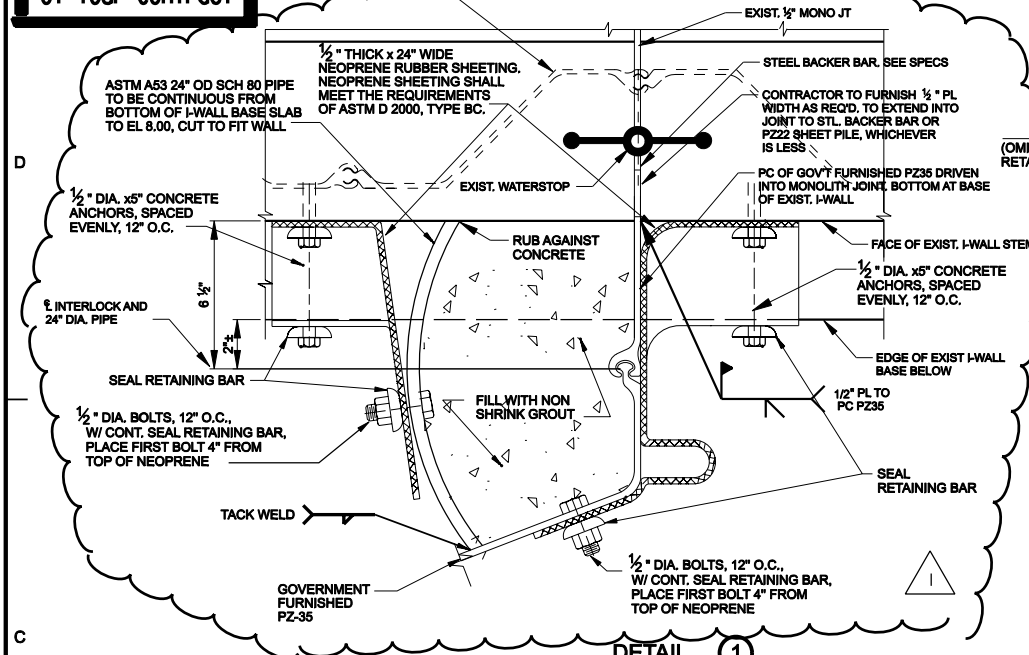
DESIGNED BY: MARCH 2007	DATE: MARCH 2007
CHECKED BY: DCA	PROJECT NO: W912PB-06-R-0161
DRAWN BY: XXX	CONTRACT NO: XXXX
SUBMITTED BY: XXX	PROJECT NO: W912PB-06-D-00930
FILE NAME: PLANS.DGN	FILE MARKS: H-NIN-NIN-NIN
SIZE: A1	SCALE: 1/8"=1'-0"
ANSI: D	DATE: MARCH 26, 2007

LAKE PONCHARTRAIN LOUISIANA
 HURRICANE PROTECTION PROJECT
 LONDON AVENUE CANAL WALL LOAD TEST
 ORLEANS PARISH, LOUISIANA

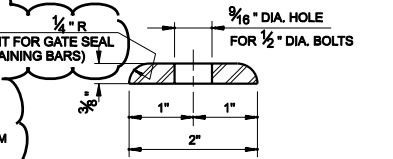
WALL LOAD TEST DETAILS

Safety is a Part of Your Contract

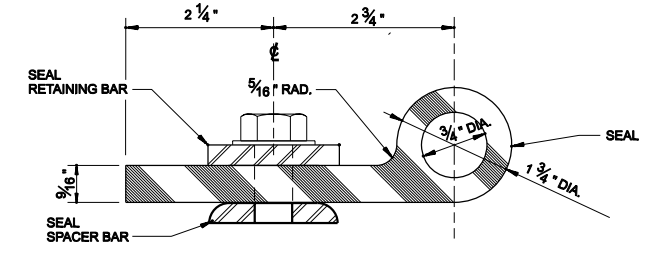
1. EXIST. PZ22 BELOW (ORIENTATION MAY VARY FROM SHOWN)



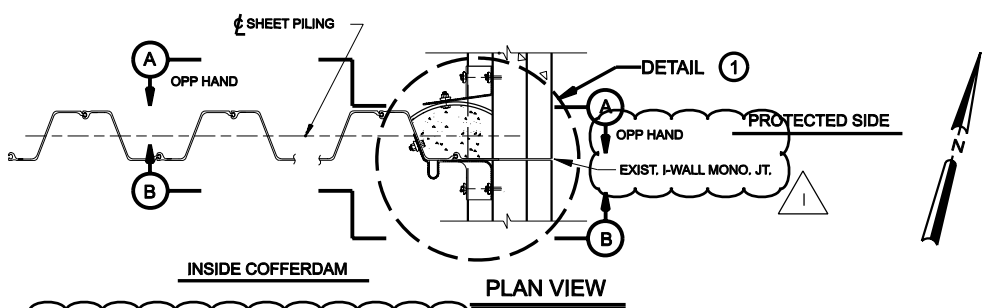
- NOTES:
1. SOUTHERN CONNECTION TO I-WALL IS SIMILAR BUT OPPOSITE.
 2. FOR JOINT DETAIL BELOW MUDLINE, SEE DETAIL BELOW.
 3. ALL TIE-INS TO EXISTING I-WALL SIMILAR.
 4. WALES NOT SHOWN FOR CLARITY.
 5. 1/2" DIA. BOLTS SHALL CONFORM TO ASTM A307.
 6. THE CONTRACTOR MUST ALLOW GROUT TO SET 3 DAYS PRIOR TO FILLING COFFERDAM.



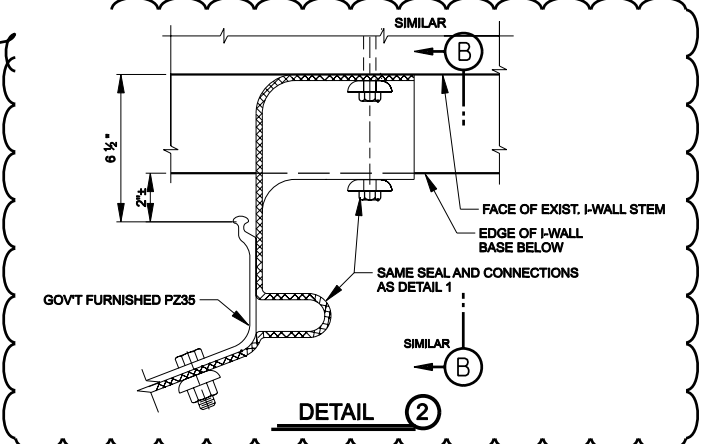
SEAL RETAINING AND SPACER BARS
NOT TO SCALE



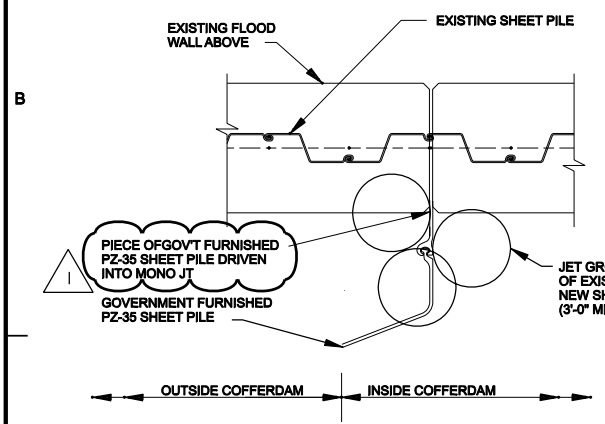
GATE SEAL
NOT TO SCALE



- NOTES:
1. SOUTHERN CONNECTION TO I-WALL IS SIMILAR BUT OPPOSITE.
 2. WALES NOT SHOWN FOR CLARITY.

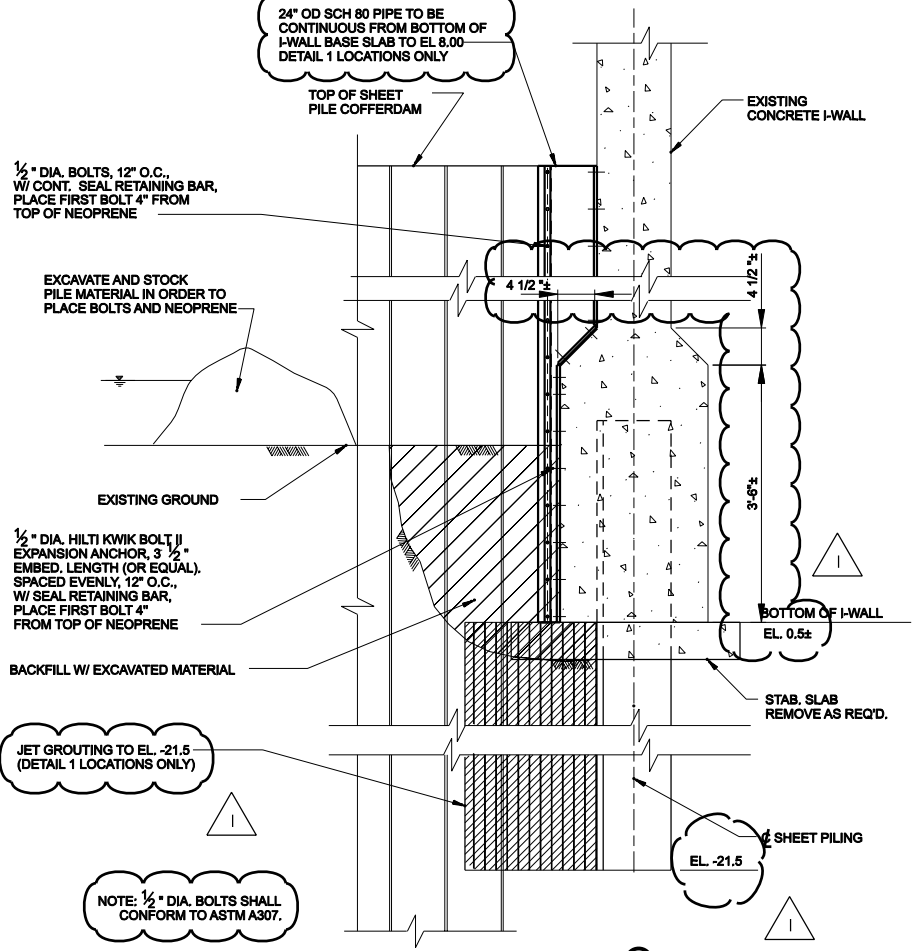


DETAIL 2

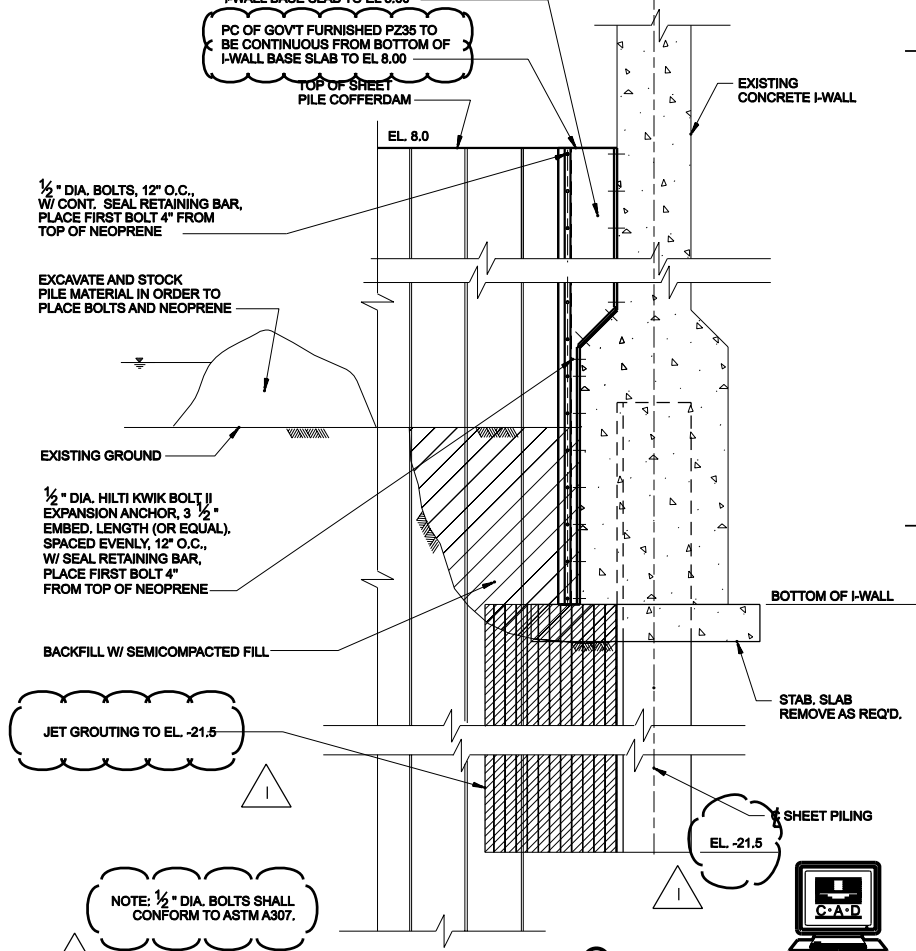


JOINT DETAIL - BELOW MUDLINE
NOT TO SCALE

- NOTES:
1. SOUTHERN CONNECTION TO I-WALL IS SIMILAR BUT OPPOSITE.
 2. NEOPRENE AND PIPE NOT SHOWN FOR CLARITY. SEE DETAIL 1, THIS SHEET, FOR DETAILS.
 3. THE CONTRACTOR MUST ALLOW GROUT TO SET 3 DAYS (3000 PSI) PRIOR TO FILLING COFFERDAM.



SECTION B
NOT TO SCALE



SECTION A
NOT TO SCALE

US ARMY CORPS OF ENGINEERS
NEW ORLEANS DISTRICT

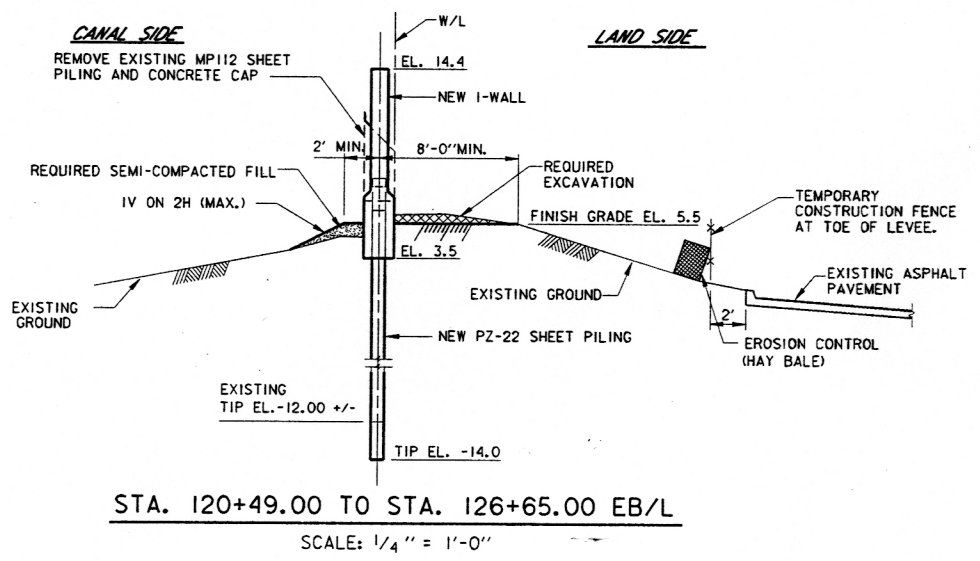
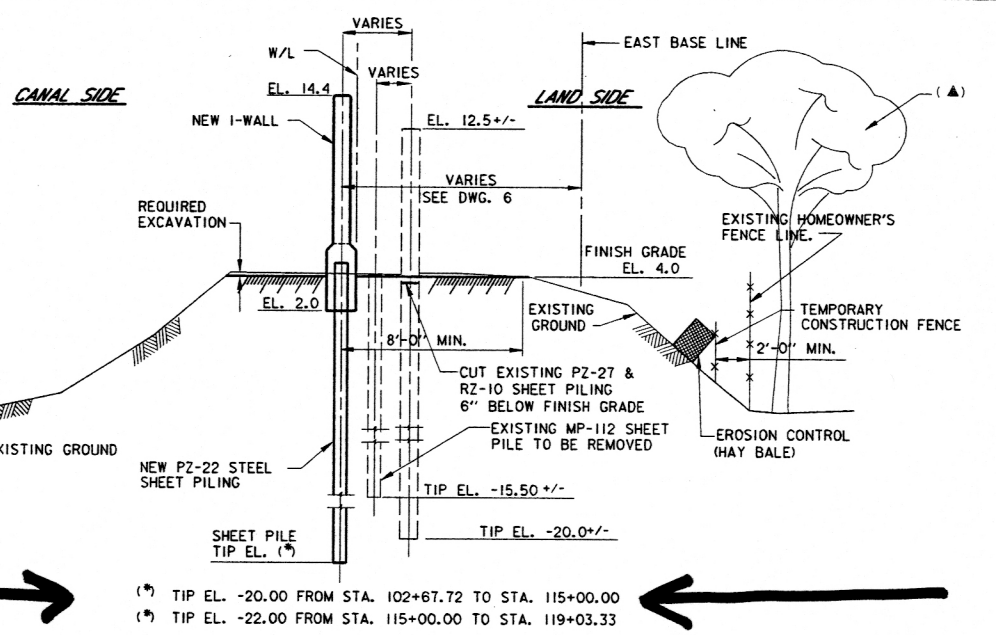
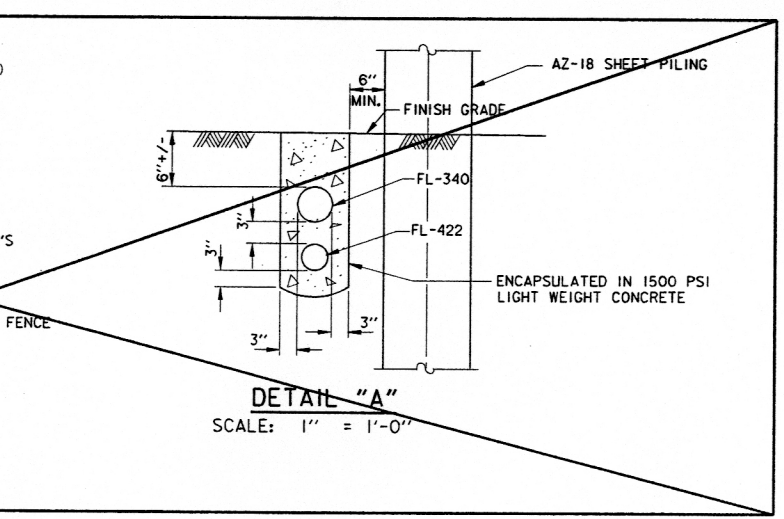
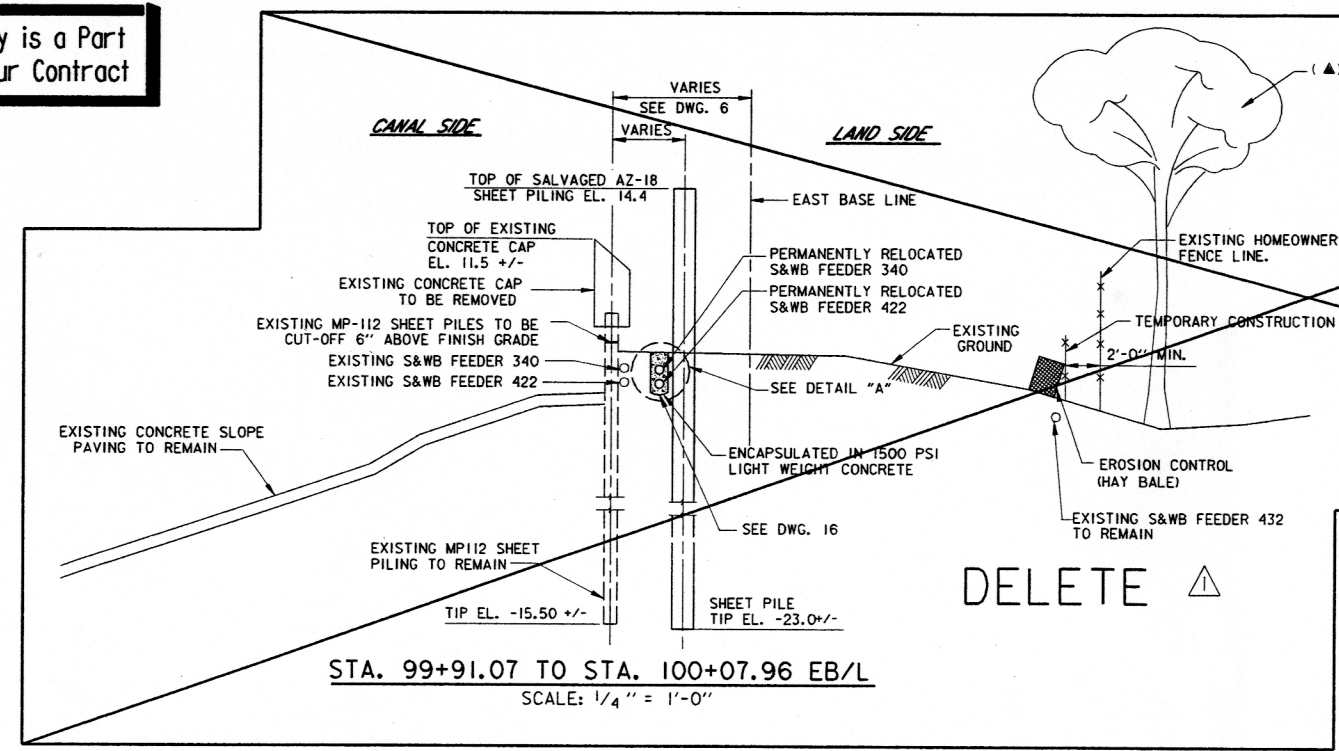
NO.	DESCRIPTION	DATE	APPR.
1	REVISOR TO AGREE WITH RFP NO. 0002 JUN -07	D.C.A.	
	CONTRACT NO. W12P8-06-D-0073 0005	DATE	APPR.

DESIGNED BY:	DATE:	APPROVED BY:	DATE:
EPB / DCA	MARCH 2007	PLANS/DEN	MARCH 26, 2007
DWN BY:	CONTRACT NO.:	FILE NAME:	PLANS/DEN
CPB	W12P8-06-R-0161	W12P8-06-R-0161	H-NK-NIN-NIN
SUBMITTED BY:	CONTRACT NO.:	FILE NAME:	PLANS/DEN
XXX	W12P8-06-R-0161	W12P8-06-R-0161	H-NK-NIN-NIN
DESIGNED BY:	DATE:	APPROVED BY:	DATE:
PLANS/DEN	MARCH 26, 2007	PLANS/DEN	MARCH 26, 2007

LAKE CHARTRAIN LOUISIANA
HURRICANE PROTECTION PROJECT
LONDON AVENUE CANAL WALL LOAD TEST
ORLEANS PARISH, LOUISIANA

WALL LOAD TEST DETAILS
SHEET IDENTIFICATION NUMBER 5 OF 8

Safety is a Part of Your Contract

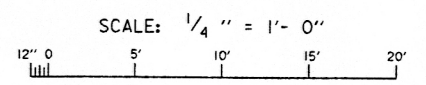


(*) TIP EL. -20.00 FROM STA. 102+67.72 TO STA. 115+00.00
 (*) TIP EL. -22.00 FROM STA. 115+00.00 TO STA. 119+03.33
STA. 102+67.72 TO STA. 119+03.06 EB/L
 SCALE: 1/4" = 1'-0"

- NOTES:**
1. TEMPORARILY RELOCATE FEEDER 340 BY DIGGING A TRENCH, COVERING WITH A STEEL PLATE AND LEVEE MATERIAL. AFTER THE CONCRETE CAP IS REMOVED FROM THE SHEET PILE, FEEDER 340 SHALL BE REMOVED FROM THE TEMPORARY TRENCH AND ATTACHED TO THE NEW FLOODWALL.
 2. EXISTING FEEDER 340 CONSISTS OF A THREE (3) CONDUCTOR STEEL ARMORED SUBMARINE 400 MCM COPPER, RUBBER INSULATED, LEAD COVERED 15 KV POWER CABLE.
 3. EXISTING FEEDER 422 CONSISTS OF A THREE (3) CONDUCTOR STEEL ARMORED SUBMARINE NO.4 AWG COPPER, RUBBER INSULATED, LEAD COVERED 15 KV POWER CABLE.
 4. FOR FEEDERS 340 & 422 RELOCATION DETAILS, SEE DWGS. 46-48.
 5. FOR PLAN, SEE DWGS. 4 THRU 7.
 6. FOR PROFILES, SEE DWGS. 12 THRU 14.
 7. FOR GENERAL NOTES, SEE DWG. 2.
 8. FOR FENCE DETAILS, SEE DWG. 61
 9. FOR FRACTURED FIN TEXTURE DETAILS, SEE DWGS 31, 32 & 32g.

(▲) THE CONTRACTOR SHALL TRIM THE TREE LIMBS TO A MINIMUM WITHIN THE CONSTRUCTION SERVITUDE LINE, NECESSARY FOR MAINTAINING MINIMUM CLEARANCE FOR CONSTRUCTION.

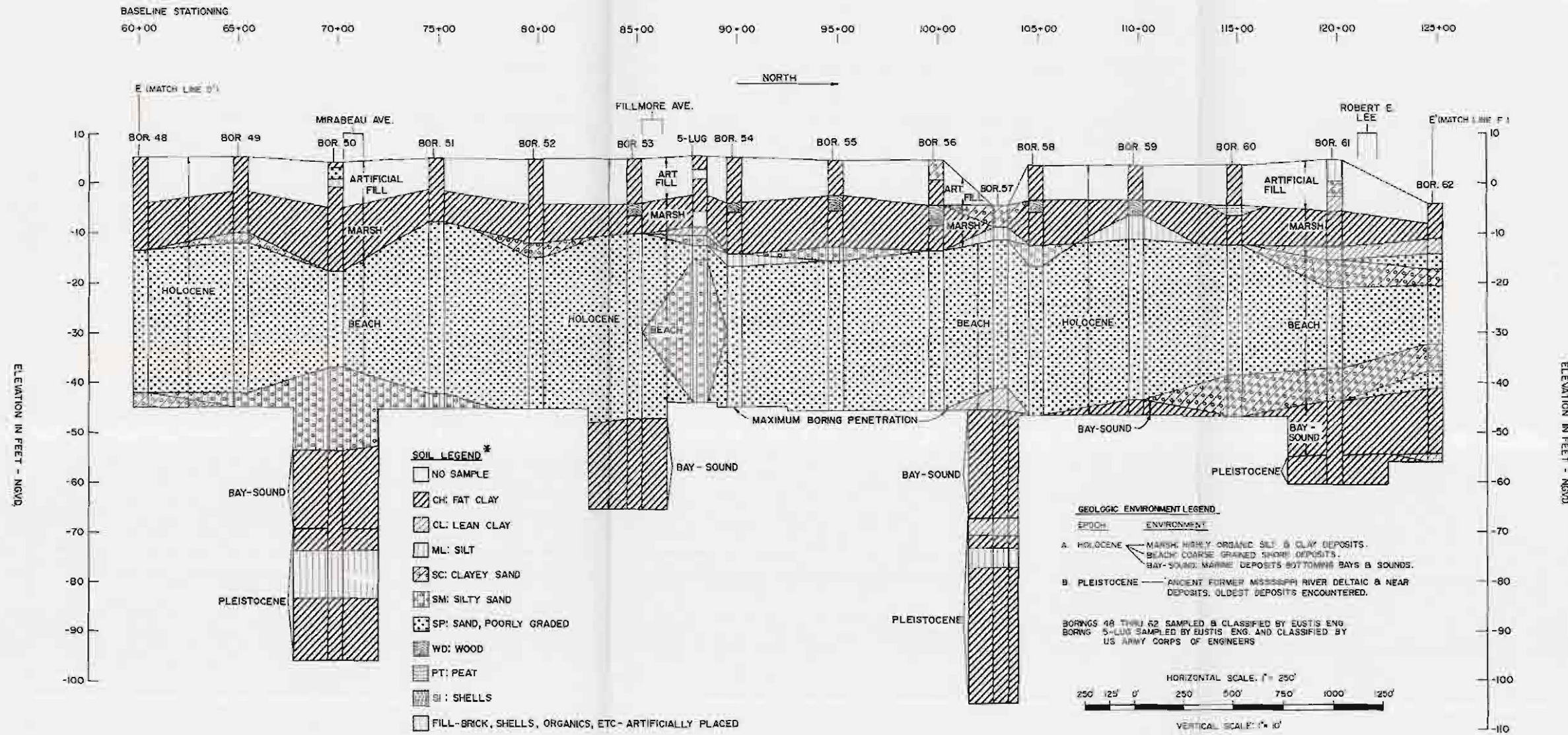
THIS PLAN ACCOMPANIES MODIFICATION A00002 TO CONTRACT NUMBER DACW29-94-C-0079



U. S. ARMY ENGINEER DISTRICT, NEW ORLEANS CORPS OF ENGINEERS NEW ORLEANS, LOUISIANA		GOTECH, INC. CONSULTING ENGINEERS BATON ROUGE, LOUISIANA	
LONDON AVE. OUTFALL CANAL, PARALLEL PROTECTION MIRABEAU AVE. TO ROBERT E. LEE BLVD., WEST BANK MIRABEAU AVE. TO LEON C. SIMON BLVD., EAST BANK ORLEANS PARISH, LOUISIANA TYPICAL SECTIONS EAST SIDE			
DESIGNED BY: R.CHOPIN	DATE: 03/94	PLOT SCALE: 48	PLOT DATE: 12/5/95
DRAWN BY: BUBB LE	CHECKED BY: S.L.SHAH	CADD FILE: 4029916.DWG	FILE NO. H-4-40295
SUBMITTED BY: MICHAEL G. JACKSON, P.E. BURK-KLEINFETER, INC.		SOLICITATION NO. DACW29-94-B-0047 DWG. 16 OF 73	

Reference

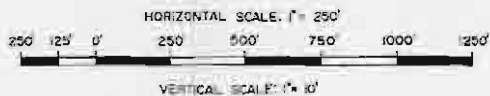
LONDON AVENUE OUTFALL CANAL - EAST LEVEE (MIDDLE SECTION)



- SOIL LEGEND ***
- NO SAMPLE
 - ▨ CH: FAT CLAY
 - ▩ CL: LEAN CLAY
 - ▧ ML: SILT
 - ▦ SC: CLAYEY SAND
 - ▥ SM: SILTY SAND
 - ▤ SP: SAND, POORLY GRADED
 - ▣ WD: WOOD
 - ▢ PT: PEAT
 - SI: SHELLS
 - FILL-BRICK, SHELLS, ORGANICS, ETC - ARTIFICIALLY PLACED

- GEOLOGIC ENVIRONMENT LEGEND**
- | EPOCH | ENVIRONMENT |
|----------------|--|
| A. HOLOCENE | MARSH: HIGHLY ORGANIC SILT & CLAY DEPOSITS.
BEACH: COARSE GRAINED SAND DEPOSITS.
BAY-SOUND: MARINE DEPOSITS BOTTOMING BAYS & SOUNDS. |
| B. PLEISTOCENE | ANCIENT FORMER MISSISSIPPI RIVER DELTAIC & NEAR DEPOSITS. OLDEST DEPOSITS ENCOUNTERED. |

BORINGS 48 THRU 62 SAMPLED & CLASSIFIED BY EUSTIS ENG.
BORING 5-LUG SAMPLED BY EUSTIS ENG. AND CLASSIFIED BY
U.S. ARMY CORPS OF ENGINEERS



* EUSTIS ENGINEERING COMBINED SOIL SYMBOLS WERE MODIFIED TO ACCOMMODATE THE PREDOMINANT SOIL TYPE AND THE UNIFIED SOIL CLASSIFICATION SYMBOL.
SEE PG. 1-3 APPENDIX A FOR LOCATION OF EUSTIS ENGINEERING SOIL BORINGS

LAKE BONDWATER, LA. AND VICINITY
WIDE LEVEL PLAN
DESIGN MEMORANDUM NO. 754 - GENERAL DESIGN
LONDON AVE. OUTFALL CANAL
ORLEANS PARISH

SOIL AND GEOLOGICAL PROFILE

U.S. ARMY ENGINEER DISTRICT, NEW ORLEANS
CORPS OF ENGINEERS
DATE: SEPT 1988 FILE NO. H-2-30288