

VICKSBURG DISTRICT



OPERATOR Penley CONE NUMBER DTA1039

LOCATION 30 01 06.3 90 04 12.8

Date&Time 8/7/2007 10:31:20 AM HOLE NUMBER LC-1.07C

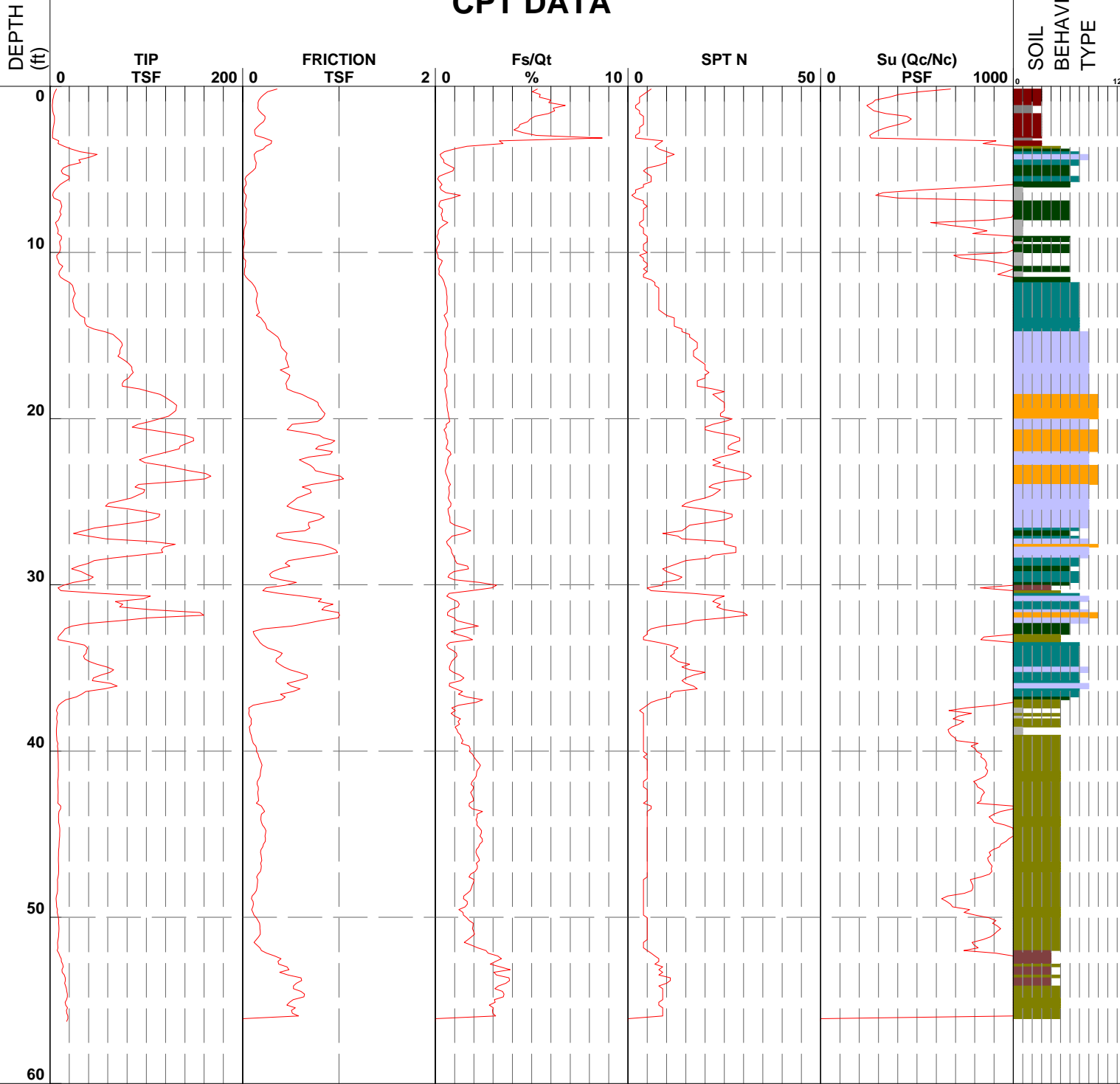
NC=20

Header10 _____ Header11 _____

Header12 _____

Header13

CPT DATA



- | | | | |
|------------------------------|---------------------------------|--------------------------------|------------------------------------|
| ■ 1 - sensitive fine grained | ■ 4 - silty clay to clay | ■ 7 - silty sand to sandy silt | ■ 10 - gravelly sand to sand |
| ■ 2 - organic material | ■ 5 - clayey silt to silty clay | ■ 8 - sand to silty sand | ■ 11 - very stiff fine grained (*) |
| ■ 3 - clay | ■ 6 - sandy silt to clayey silt | ■ 9 - sand | ■ 12 - sand to clayey sand (*) |

Header14

Header15

Header16

VICKSBURG DISTRICT



OPERATOR Penley CONE NUMBER DTA1039

LOCATION 30 01 05.9 90 04 12.2

Date&Time 8/7/2007 11:50:02 AM HOLE NUMBER LC-2.07C

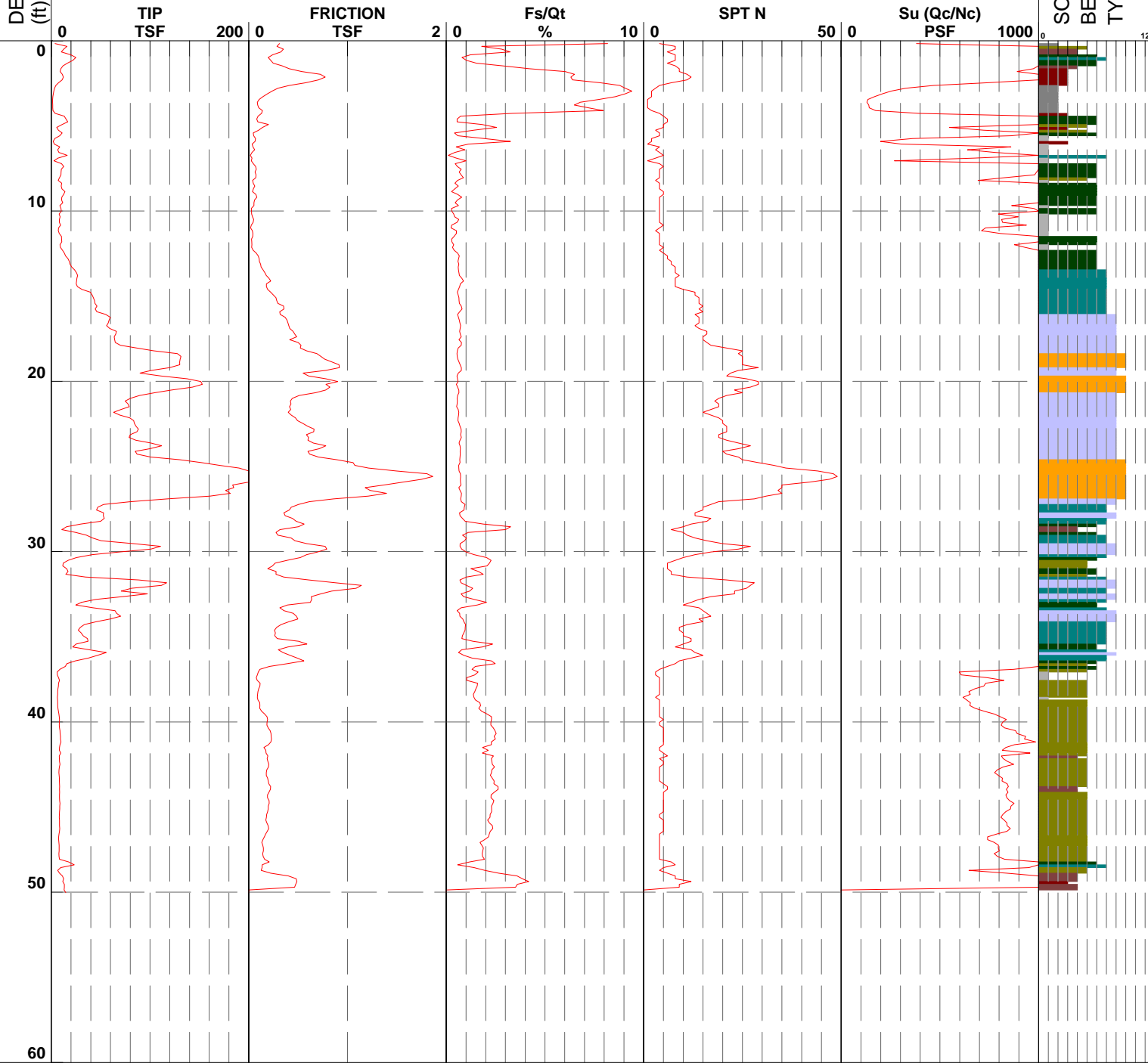
NC=20

Header10 _____ Header11 _____

Header12 _____

Header13

CPT DATA



- | | | | |
|------------------------------|---------------------------------|--------------------------------|------------------------------------|
| ■ 1 - sensitive fine grained | ■ 4 - silty clay to clay | ■ 7 - silty sand to sandy silt | ■ 10 - gravelly sand to sand |
| ■ 2 - organic material | ■ 5 - clayey silt to silty clay | ■ 8 - sand to silty sand | ■ 11 - very stiff fine grained (*) |
| ■ 3 - clay | ■ 6 - sandy silt to clayey silt | ■ 9 - sand | ■ 12 - sand to clayey sand (*) |

Header14

Header15

Header16

VICKSBURG DISTRICT

YOUR LOGO
HERE

OPERATOR Penley CONE NUMBER DTA1039

LOCATION 30 01 05.4 90 04 12.3

Date&Time 8/7/2007 12:52:25 PM HOLE NUMBER LC-3.07C

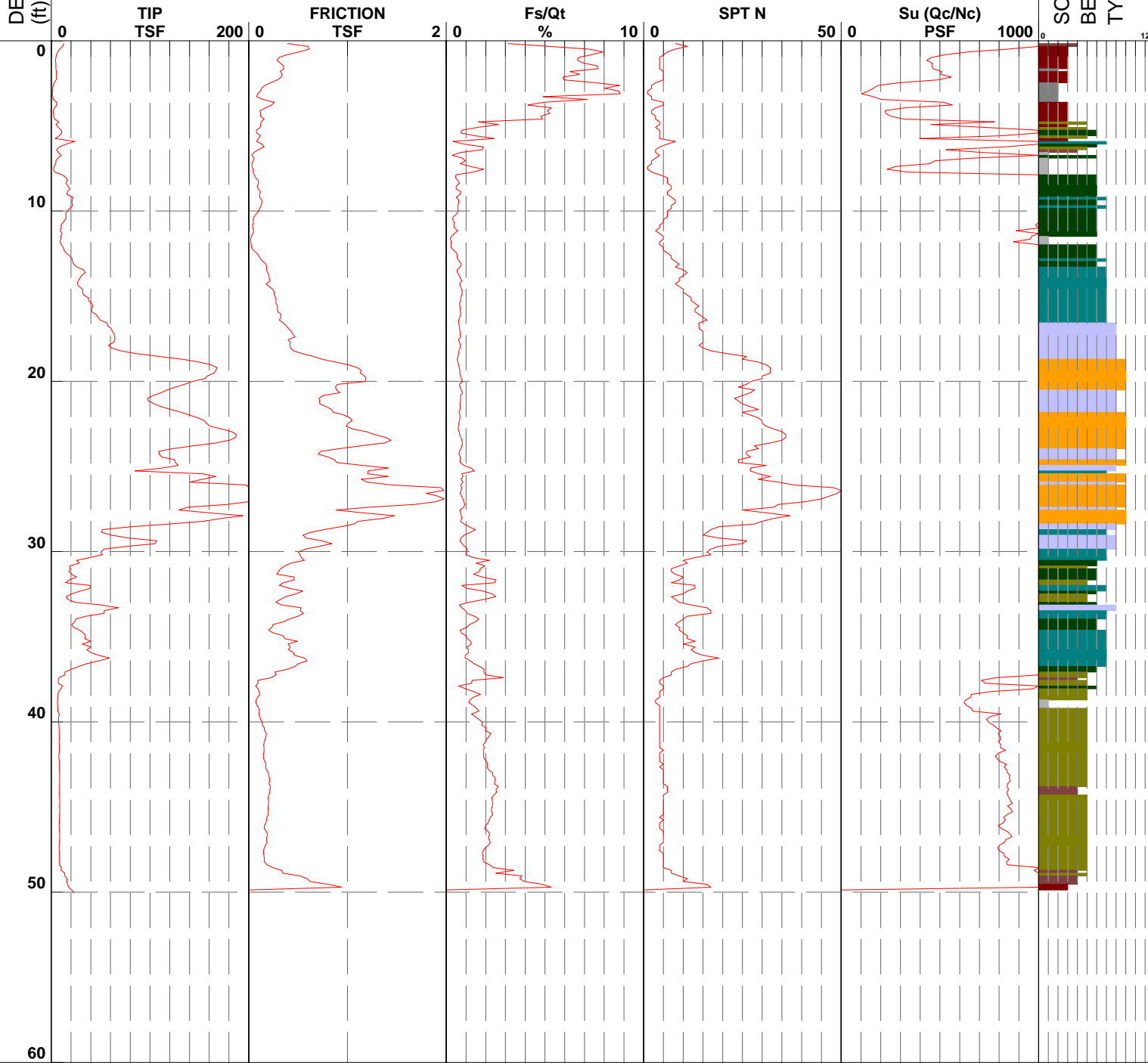
NC=20

Header10 _____ Header11 _____

Header12 _____

Header13

CPT DATA



- | | | | |
|------------------------------|---------------------------------|--------------------------------|------------------------------------|
| ■ 1 - sensitive fine grained | ■ 4 - silty clay to clay | ■ 7 - silty sand to sandy silt | ■ 10 - gravelly sand to sand |
| ■ 2 - organic material | ■ 5 - clayey silt to silty clay | ■ 8 - sand to silty sand | ■ 11 - very stiff fine grained (*) |
| ■ 3 - clay | ■ 6 - sandy silt to clayey silt | ■ 9 - sand | ■ 12 - sand to clayey sand (*) |

Header14

Header15

Header16

VICKSBURG DISTRICT



OPERATOR Penley CONE NUMBER DTA1039

LOCATION 30 01 05.7 90 04 11.6

Date&Time 8/7/2007 3:09:34 PM HOLE NUMBER LC-4.07C

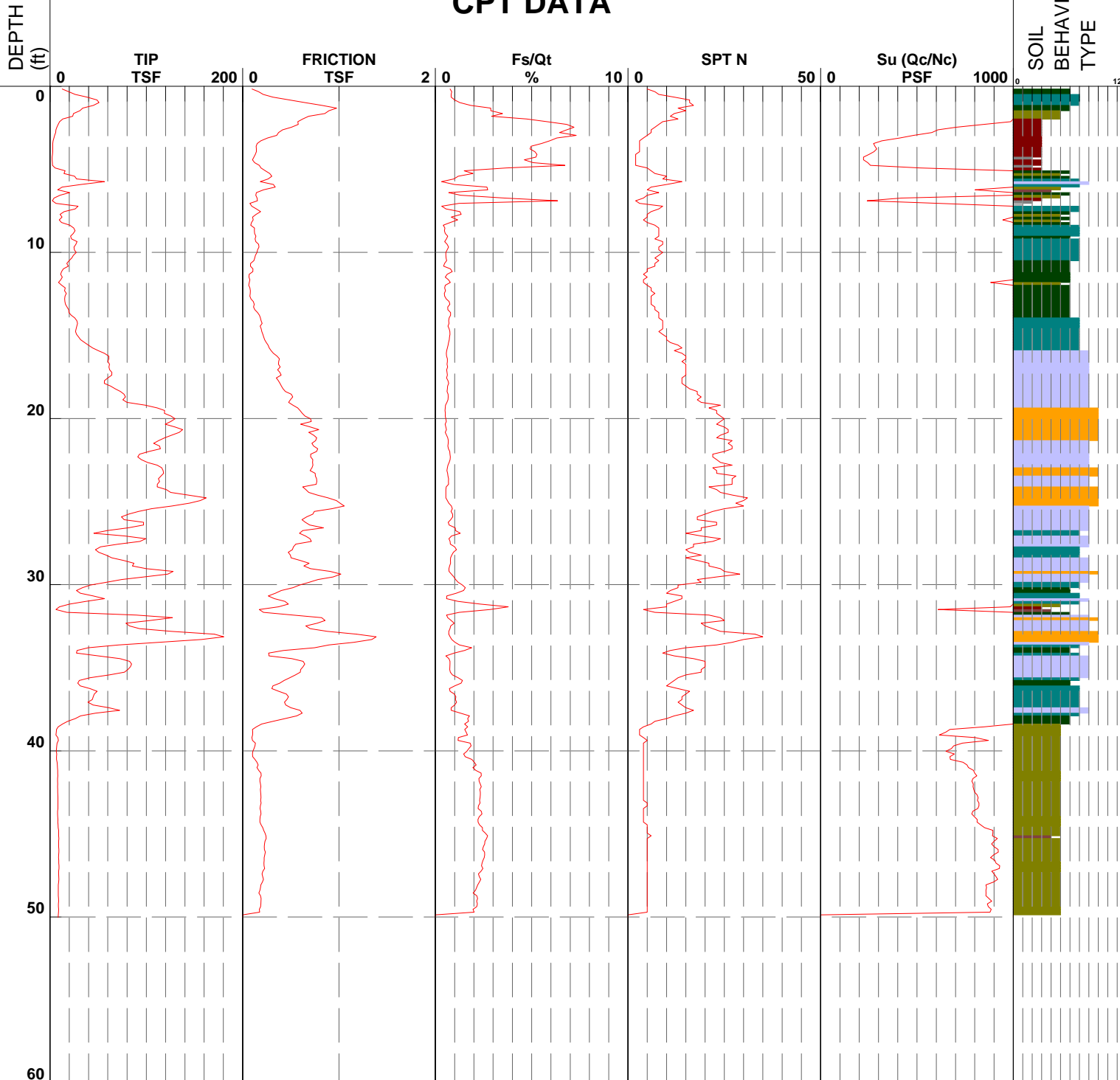
NC=20

Header10 _____ Header11 _____

Header12 _____

Header13

CPT DATA



- | | | | |
|------------------------------|---------------------------------|--------------------------------|------------------------------------|
| ■ 1 - sensitive fine grained | ■ 4 - silty clay to clay | ■ 7 - silty sand to sandy silt | ■ 10 - gravelly sand to sand |
| ■ 2 - organic material | ■ 5 - clayey silt to silty clay | ■ 8 - sand to silty sand | ■ 11 - very stiff fine grained (*) |
| ■ 3 - clay | ■ 6 - sandy silt to clayey silt | ■ 9 - sand | ■ 12 - sand to clayey sand (*) |

Header14

Header15

Header16

VICKSBURG DISTRICT



OPERATOR Penley CONE NUMBER DTA1039

LOCATION 30 01 06.1 90 04 11.3

Date&Time 8/7/2007 4:10:07 PM HOLE NUMBER LC-5.07C

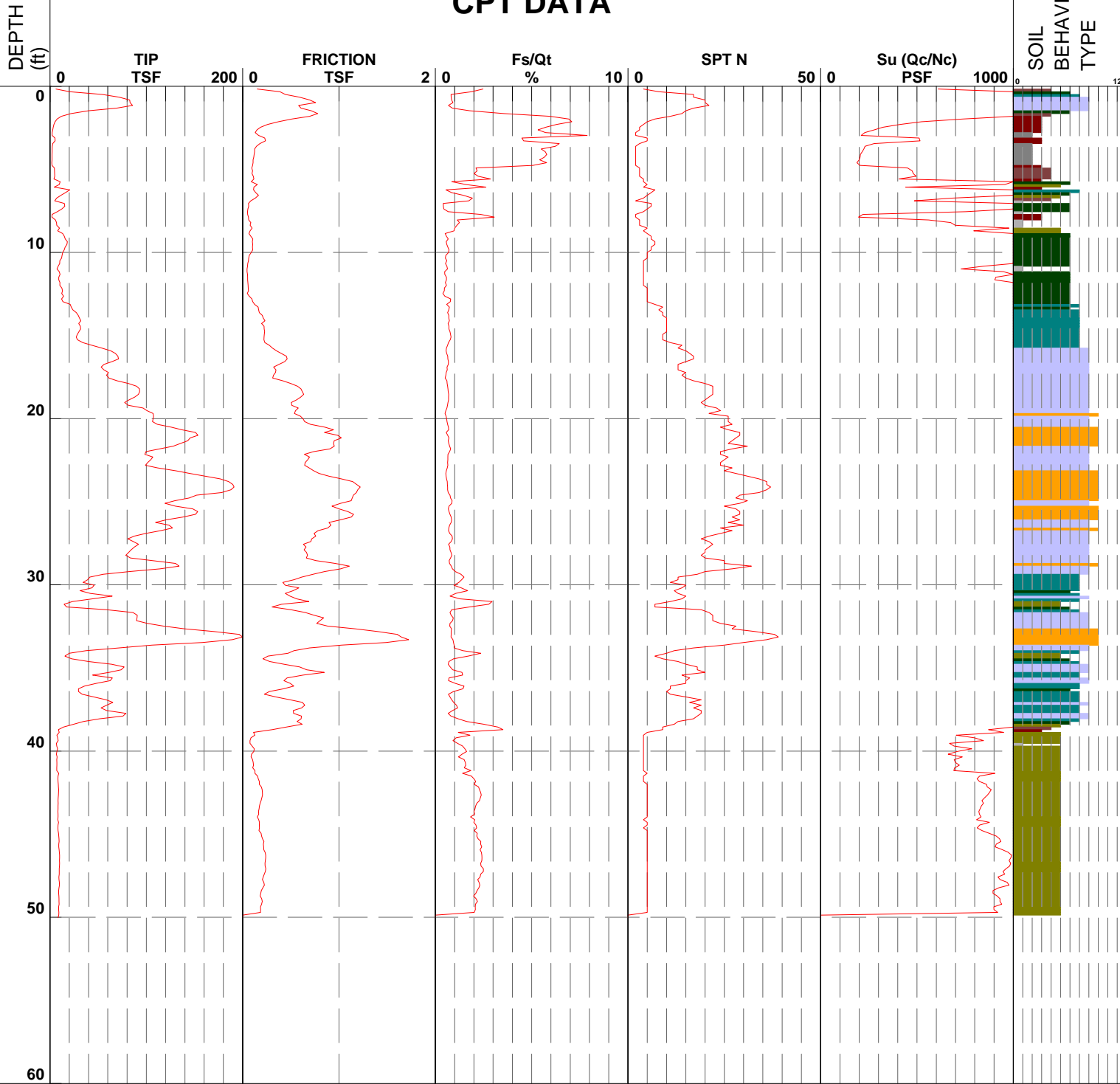
NC=20

Header10 _____ Header11 _____

Header12 _____

Header13

CPT DATA



- | | | | |
|------------------------------|---------------------------------|--------------------------------|------------------------------------|
| ■ 1 - sensitive fine grained | ■ 4 - silty clay to clay | ■ 7 - silty sand to sandy silt | ■ 10 - gravelly sand to sand |
| ■ 2 - organic material | ■ 5 - clayey silt to silty clay | ■ 8 - sand to silty sand | ■ 11 - very stiff fine grained (*) |
| ■ 3 - clay | ■ 6 - sandy silt to clayey silt | ■ 9 - sand | ■ 12 - sand to clayey sand (*) |

Header14

Header15

Header16