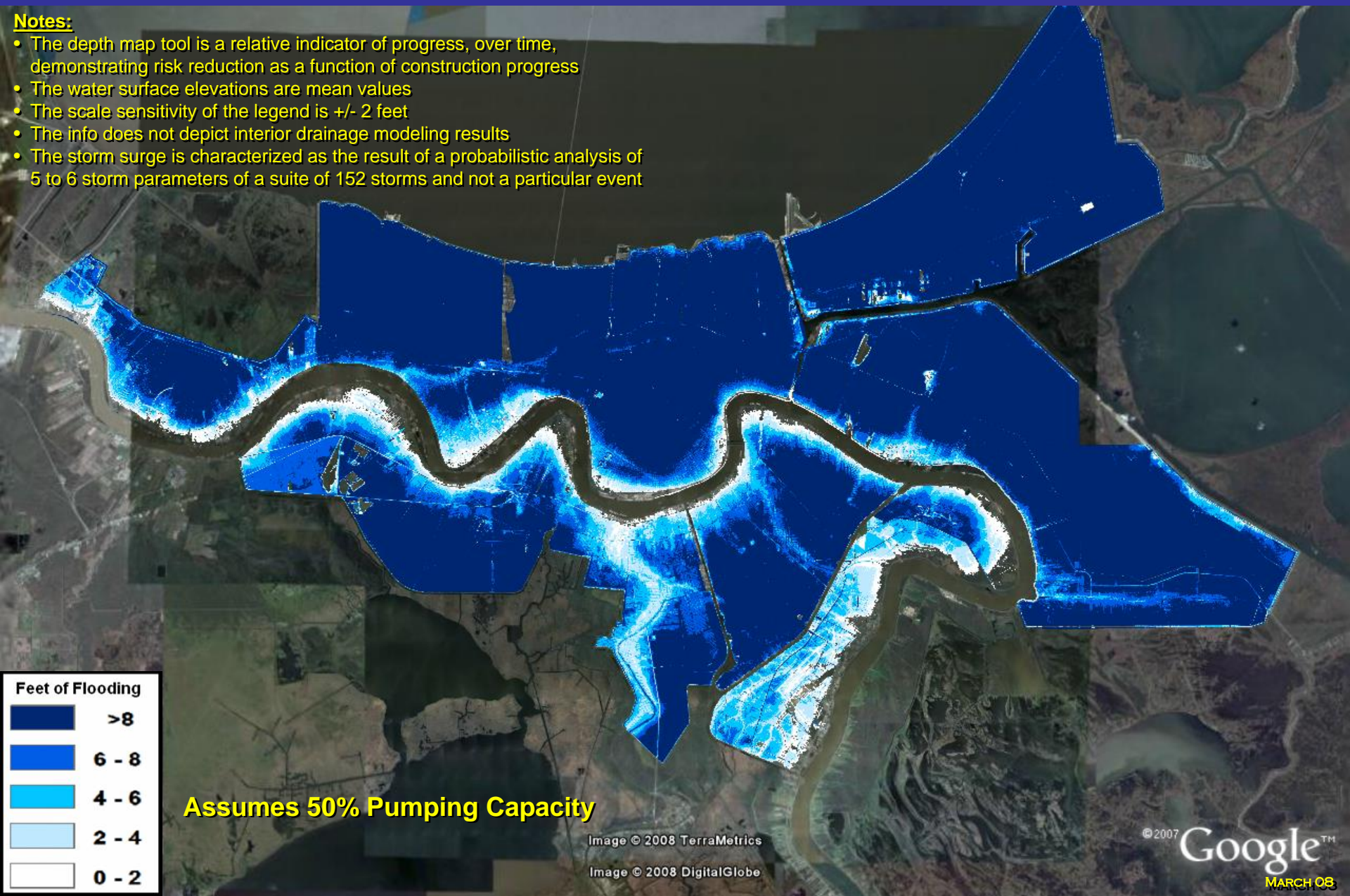





Before Katrina, you had a 0.2% chance every year of flooding this deep from Hurricanes

Notes:

- The depth map tool is a relative indicator of progress, over time, demonstrating risk reduction as a function of construction progress
- The water surface elevations are mean values
- The scale sensitivity of the legend is +/- 2 feet
- The info does not depict interior drainage modeling results
- The storm surge is characterized as the result of a probabilistic analysis of 5 to 6 storm parameters of a suite of 152 storms and not a particular event



| Feet of Flooding | |
|---|-------|
|  | >8 |
|  | 6 - 8 |
|  | 4 - 6 |
|  | 2 - 4 |
|  | 0 - 2 |

Assumes 50% Pumping Capacity

Image © 2008 TerraMetrics

Image © 2008 DigitalGlobe

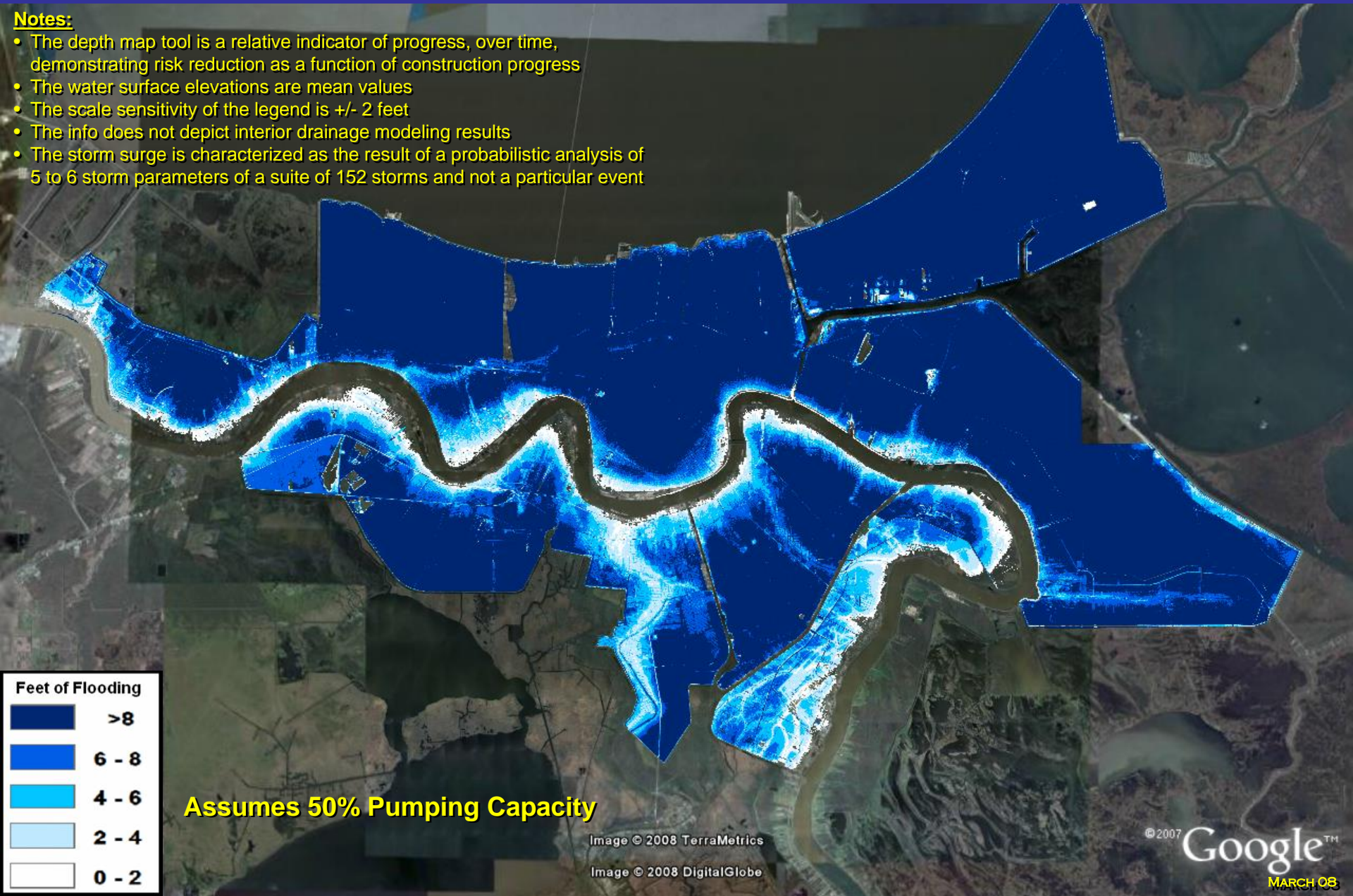
© 2007 Google™

MARCH 08

Currently, you have a 0.2% chance every year of flooding this deep from Hurricanes

Notes:

- The depth map tool is a relative indicator of progress, over time, demonstrating risk reduction as a function of construction progress
- The water surface elevations are mean values
- The scale sensitivity of the legend is +/- 2 feet
- The info does not depict interior drainage modeling results
- The storm surge is characterized as the result of a probabilistic analysis of 5 to 6 storm parameters of a suite of 152 storms and not a particular event



With the 100-year level of protection, you have a 0.2% chance every year of flooding this deep from Hurricanes

Notes:

- The depth map tool is a relative indicator of progress, over time, demonstrating risk reduction as a function of construction progress
- The water surface elevations are mean values
- The scale sensitivity of the legend is +/- 2 feet
- The info does not depict interior drainage modeling results
- The storm surge is characterized as the result of a probabilistic analysis of 5 to 6 storm parameters of a suite of 76 storms and not a particular event



| Feet of Flooding | |
|------------------|-------|
| Dark Blue | >8 |
| Medium Blue | 6 - 8 |
| Light Blue | 4 - 6 |
| Very Light Blue | 2 - 4 |
| White | 0 - 2 |

Assumes 50% Pumping Capacity