

Borrow

The U.S. Army Corps of Engineers, New Orleans District is in the midst of an unprecedented search for clay material, also known as borrow, to rebuild and reinforce the Greater New Orleans Hurricane and Storm Damage Risk Reduction System (HSDRRS) in southeast Louisiana.

Earthen levee construction requires a specific type of clay material which compacts well and prevents seepage. This material needs to contain specific amounts of sand, organic material, etc.

Before borrow material can be used for levee construction, soil borings, testing, and environmental clearance needs to be completed. Borrow site investigation can take as long as six to nine months to complete.

Borrow material is normally acquired from a landowner through a real estate transaction. However, the alternative methods of securing borrow, Contractor Furnished or Supply Contract, can be utilized when found to be in the best interest of Government.

Currently the Corps is aggressively pursuing three methods for acquiring borrow material:

Government Furnished - Utilizing this method, the Corps first identifies the borrow source location, then investigates and approves the borrow material as suitable for use. The acquisition of the real estate interest over the land may be in the name of the non-Federal sponsor.

Contractor Furnished – When using this method, the Corps requires a contractor to provide their own borrow material. The Government may provide the contractor with a “Clay Source List,” but the contractor is ultimately responsible for providing the borrow material for construction. The contractor enters into a contractual agreement with the landowner, not with the Corps, to acquire the borrow material.

Supply Contract – This method allows supply contractors to bid on task orders for the supply of borrow material to be used by the Corps and other contractors for construction of the HSDRRS.





US Army Corps
of Engineers
New Orleans District

Greater New Orleans Hurricane and Storm Damage Risk Reduction System Borrow Needs

- **Plaquemines Parish: 51,400,000 cy**
- **Mississippi River Levees: 2,100,000 cy**



US Army Corps
of Engineers
New Orleans District

Proposed and Approved Borrow Sources

IER 18 – Government Furnished Borrow

Approved 2/21/2008

Bonnet Carre North, St. Charles Parish
Churchill Farms, Jefferson Parish
Westbank Site G*, Jefferson Parish
Maynard, Orleans Parish
Cummings North, Orleans Parish
Dockville, St. Bernard Parish
910 Bayou Road, St. Bernard Parish
1418/1420 Bayou Road, St. Bernard Parish
1572 Bayou Road, St. Bernard Parish
4001 Florissant Highway, St. Bernard Parish
Belle Chasse, Plaquemines Parish
Triumph, Plaquemines Parish

IER 19 – Contractor Furnished Borrow

Approved 2/14/2008

St. Gabriel, Iberville Parish
River Birch 1, Jefferson Parish
River Birch 2, Jefferson Parish
Eastover 1, Orleans Parish
Pearlington Dirt 1, Hancock County, MS
Navy Ship, St. Bernard Parish
Guillot, St. Bernard Parish
DK Aggregates, St. Bernard Parish
Kimble 2, Plaquemines Parish

IER 22 – Government Furnished Borrow #2

Approved 5/30/08

Brad Buras, Plaquemines Parish
Chauvin*, Plaquemines Parish
Tabony, Plaquemines Parish
Westbank N, Plaquemines Parish
Westbank F, Jefferson Parish
Westbank I, Jefferson Parish

IER 23 – Contractor Furnished Borrow #2

Approved 5/8/08

1025 Florissant Hwy., St. Bernard Parish
Acosta, St. Bernard Parish
3C Riverside 1, St. Charles Parish
3C Riverside 2, St. Charles Parish
Myrtle Grove, Plaquemines Parish
Pearlington Dirt 2, Hancock County, MS

IER 25 – Government Furnished Borrow #3

Approved 2/3/09

Stumpf 1, Orleans Parish
Stumpf 2, Orleans Parish
Westbank D, Jefferson Parish
Westbank E 1, Jefferson Parish
Westbank E 2, Jefferson Parish
Tac Carrere, Plaquemines Parish

IER 26 – Contractor Furnished Borrow #3

Approved 10/20/08

Willswood, Jefferson Parish
South Kenner Road, Jefferson Parish
Meyer, Plaquemines Parish
Willow Bend 1, St. John the Baptist Parish
Frierson, Hancock County, MS

IER 28 – Government Furnished Borrow #4

Approved 7/31/09

Bazile, Plaquemines Parish
Johnson/Crovetto, St. Bernard Parish
Westbank F Access Route, Jefferson Parish

IER 29 – Contractor Furnished Borrow #4

Approved 9/8/09

Tammany Holding Company, St. Tammany Parish
Willow Bend 2, St. John the Baptist Parish
Eastover 2, Orleans Parish

IER 30 - Contractor Furnished Borrow #5

Approved 9/28/09

Henley, Hancock County, MS
Big Shake, St. James Parish
Contreras Dirt (Cells E, F and Z), St. Bernard Parish

IER 31 - Contractor Furnished Borrow #7

Approved 10/29/2010

King Mine, Hancock County, MS
Port Bienville, Hancock County, MS
Spoil Area, St. Bernard Parish
Raceland Raw Sugars, Lafourche Parish
Acosta 2, St. Bernard Parish
Scarsdale, Plaquemines Parish
River Birch - Landfill Expansion, Jefferson Parish
Levis, St Tammany Parish
Lilly Bayou, East Baton Rouge Parish
Idlewild 2, Plaquemines Parish

IER 32 - Contractor Furnished Borrow #6

Approved 1/22/10

Bocage, Ascension Parish
Idlewild 1, Plaquemines Parish
Nairn, Plaquemines Parish
3C Riverside 3, St. Charles Parish
Plaquemines Dirt & Clay, Plaquemines Parish
Citrus Lands, Plaquemines Parish
ConocoPhillips, Plaquemines Parish

IER 35 - Contractor Furnished Borrow #8

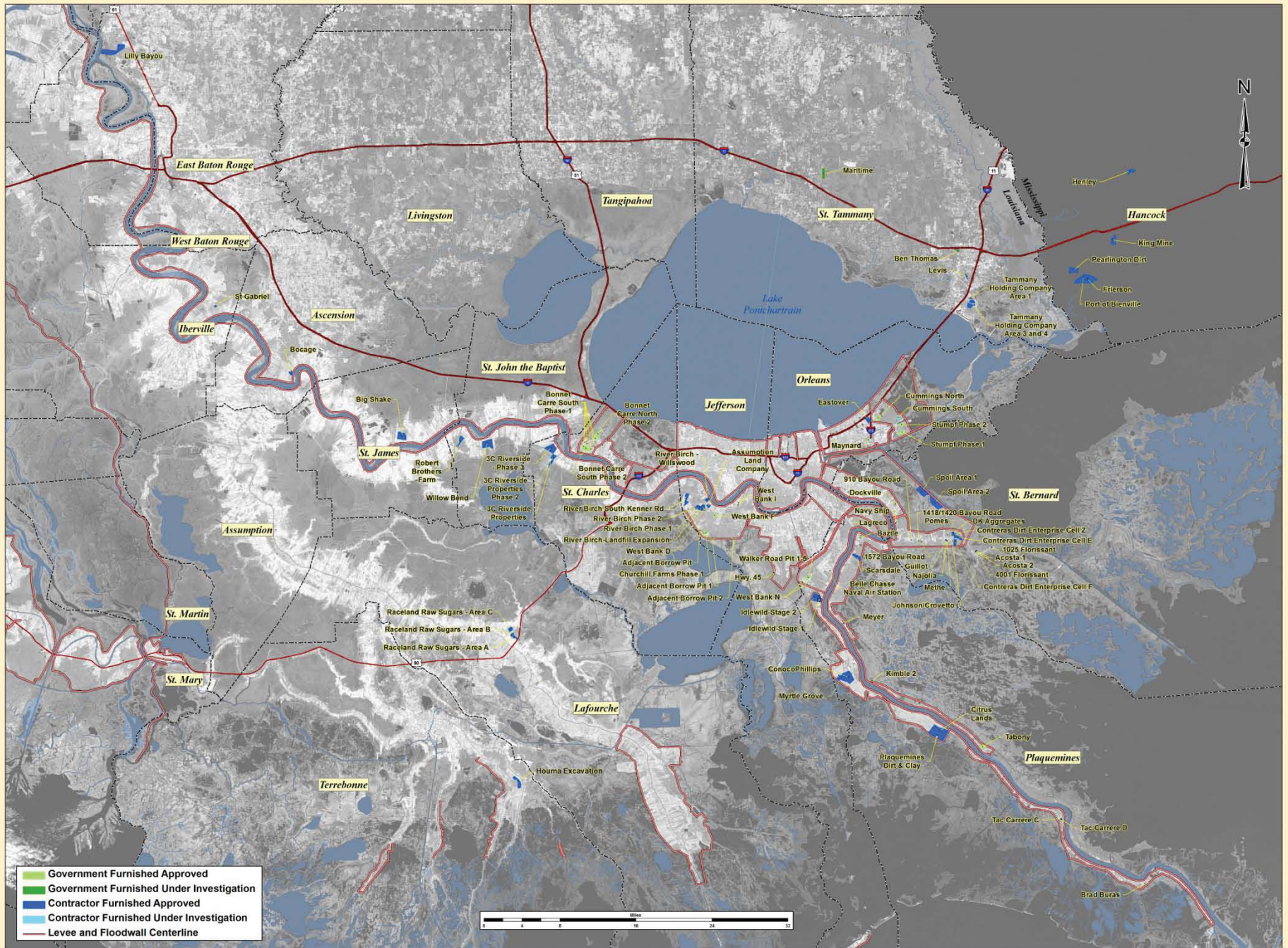
Approved 12/19/2011

Assumption Land Company, Jefferson Parish
Houma Excavation, Terrebonne Parish
RBENDII, St. John the Baptist Parish
Robert Brothers Farm, St. John the Baptist Parish

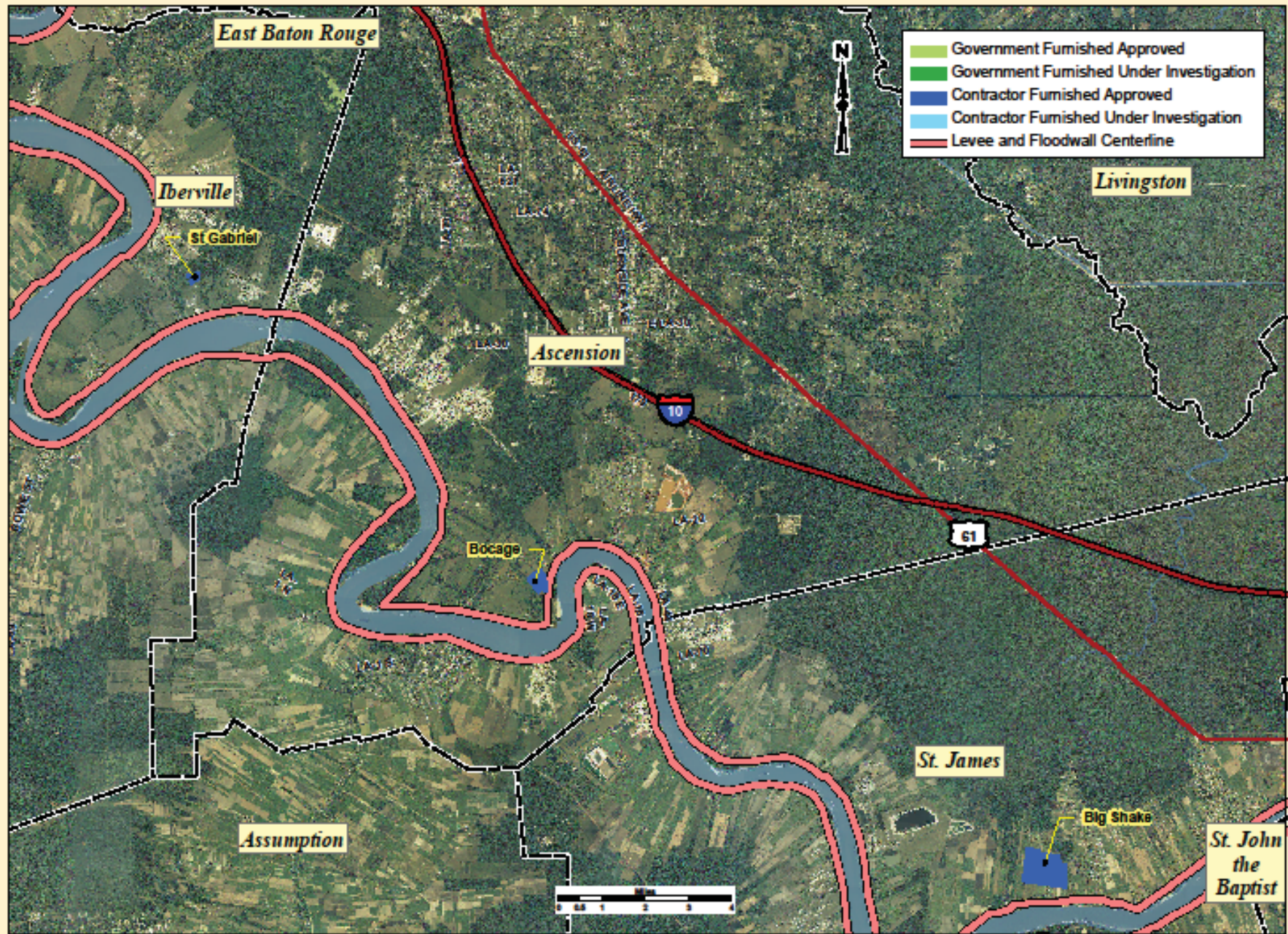
An IER is an Individual Environmental Report. The National Environmental Policy Act compliance for the HSDRRS takes the form of multiple IERs that examine smaller portions of the proposed HSDRRS. The work will culminate in a Comprehensive Environmental Document that will integrate the findings of all the previously prepared IERs, describe the work being completed as a system, and examine how each project is interrelated to the overall work being done. Groups of proposed borrow areas are investigated in each IER.

* Borrow site does not meet Corps geotechnical criteria, and will not be used for the HSDRRS.

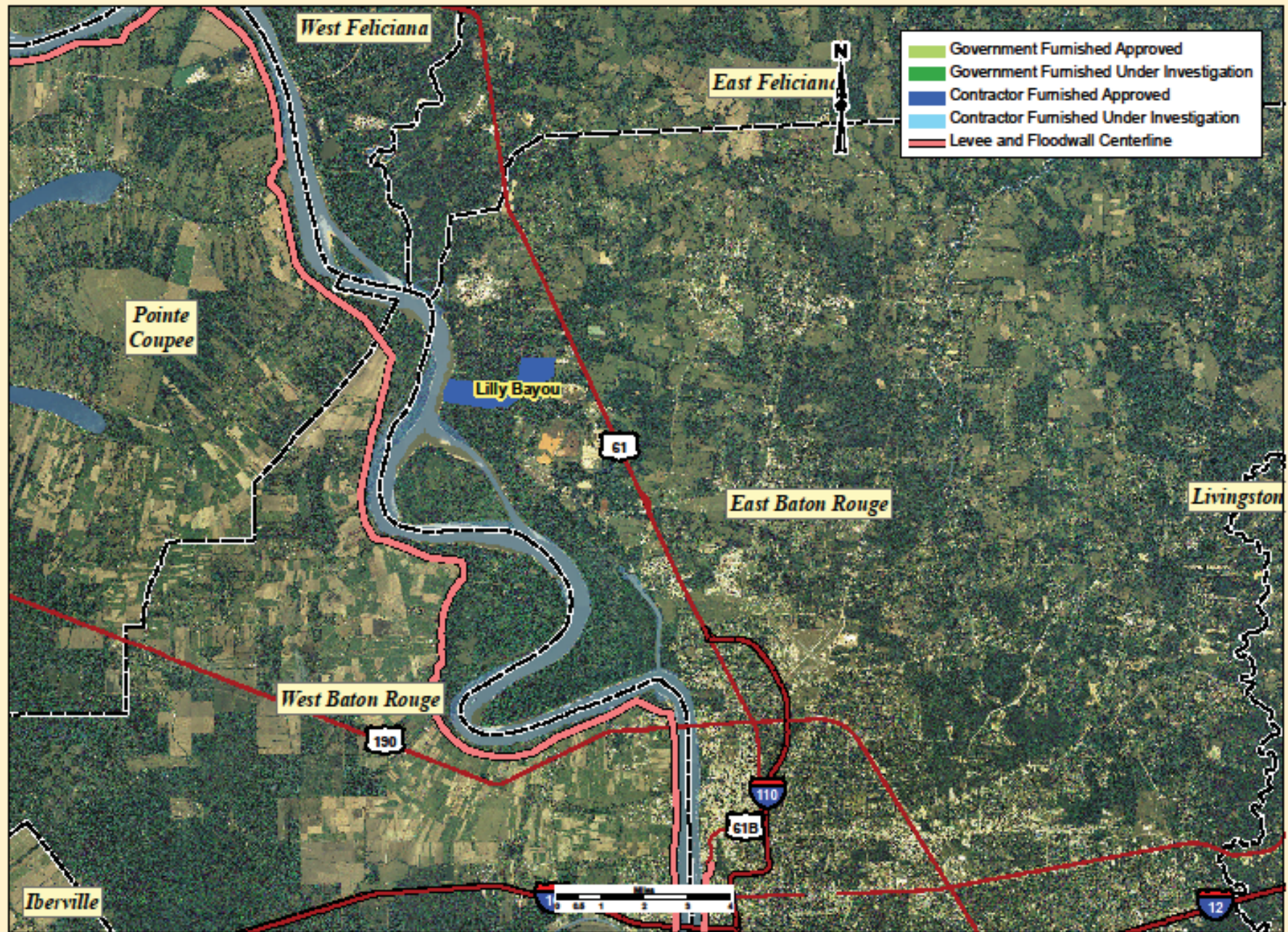
Greater New Orleans Hurricane and Storm Damage Risk Reduction System Borrow Areas



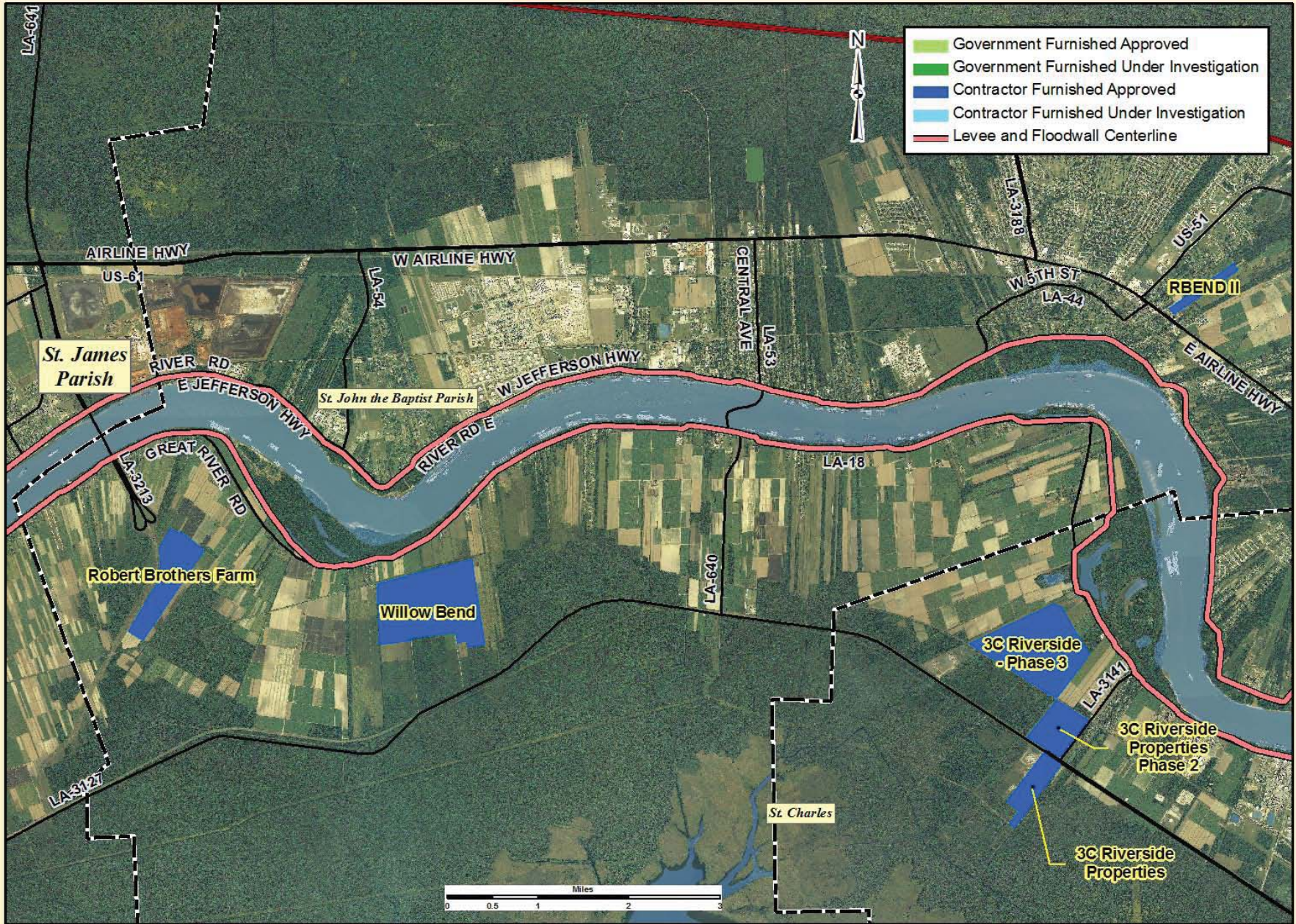
IBERVILLE - ASCENSION - ST JAMES PARISHES



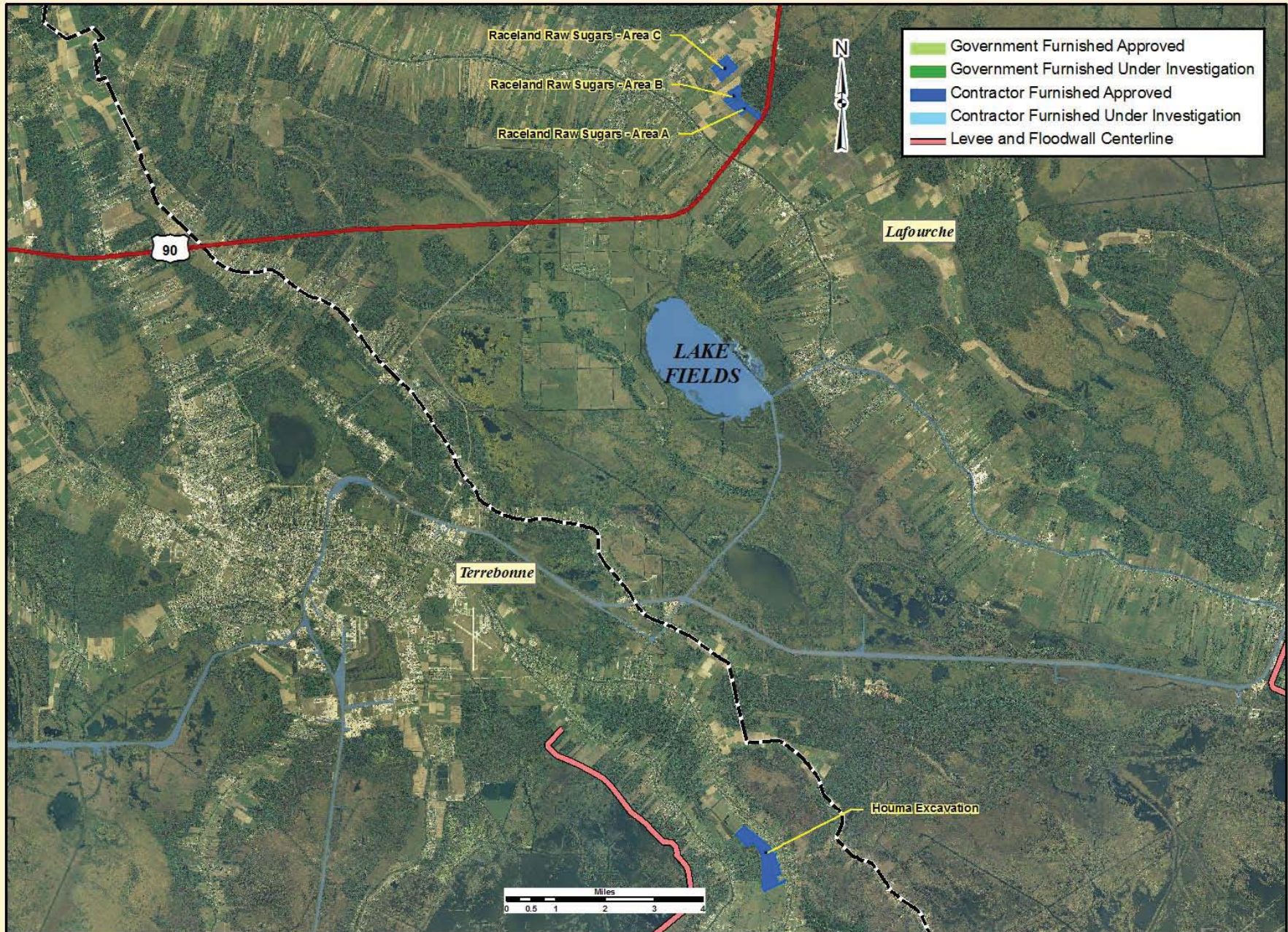
EAST BATON ROUGE PARISH



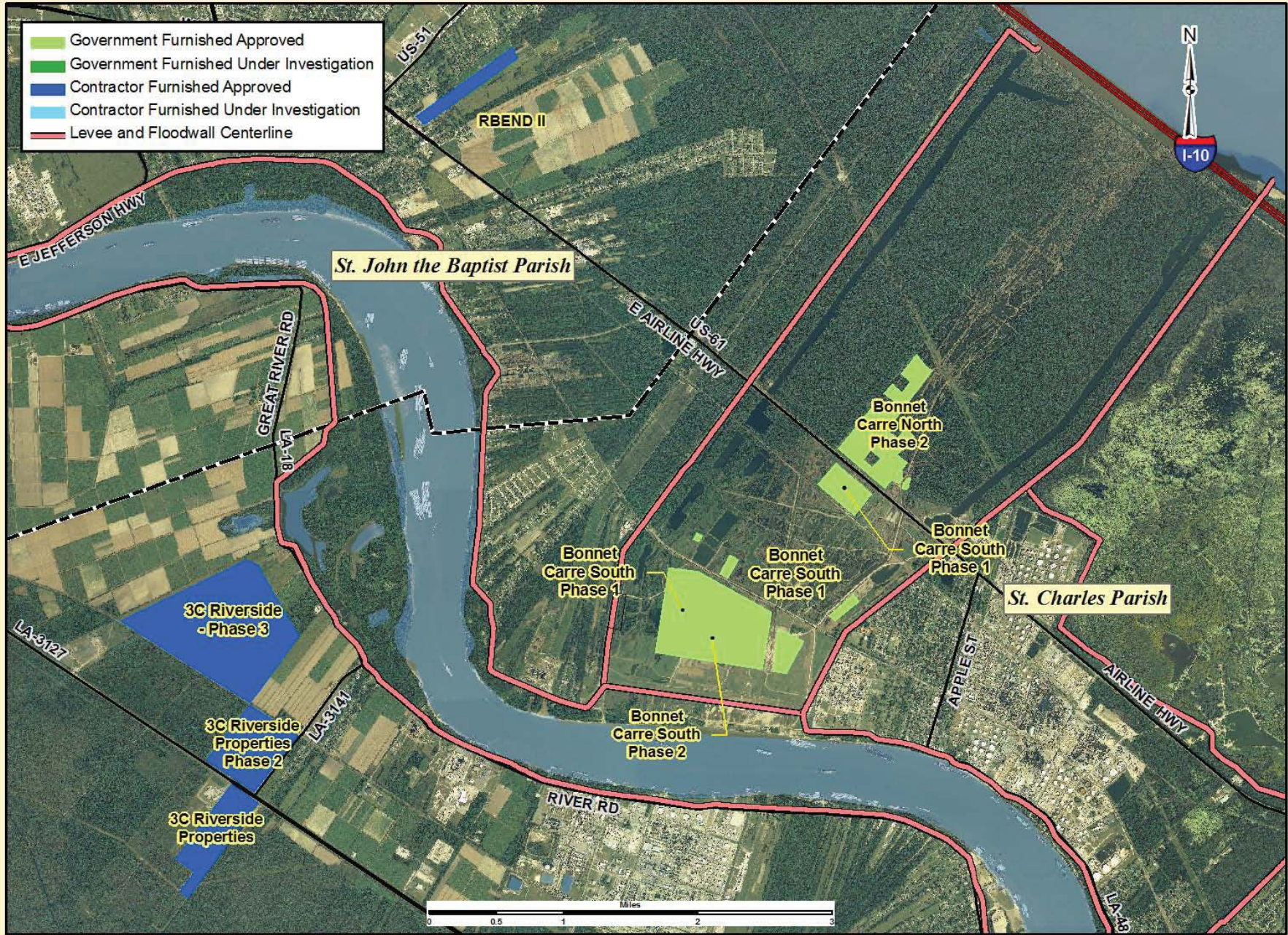
ST. JOHN THE BAPTIST PARISH



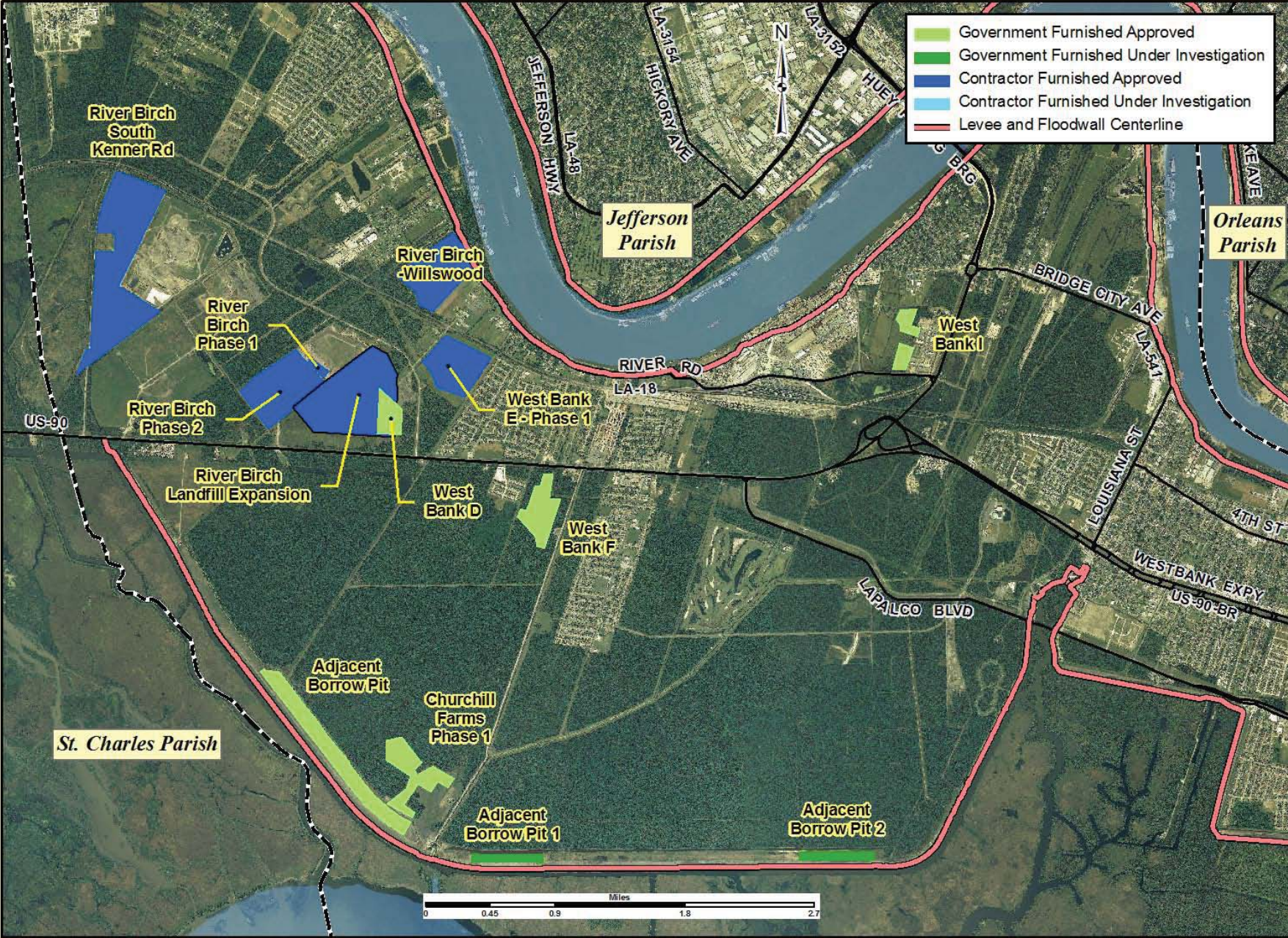
LAFOURCHE PARISH



BONNET CARRE SPILLWAY - ST. CHARLES PARISH

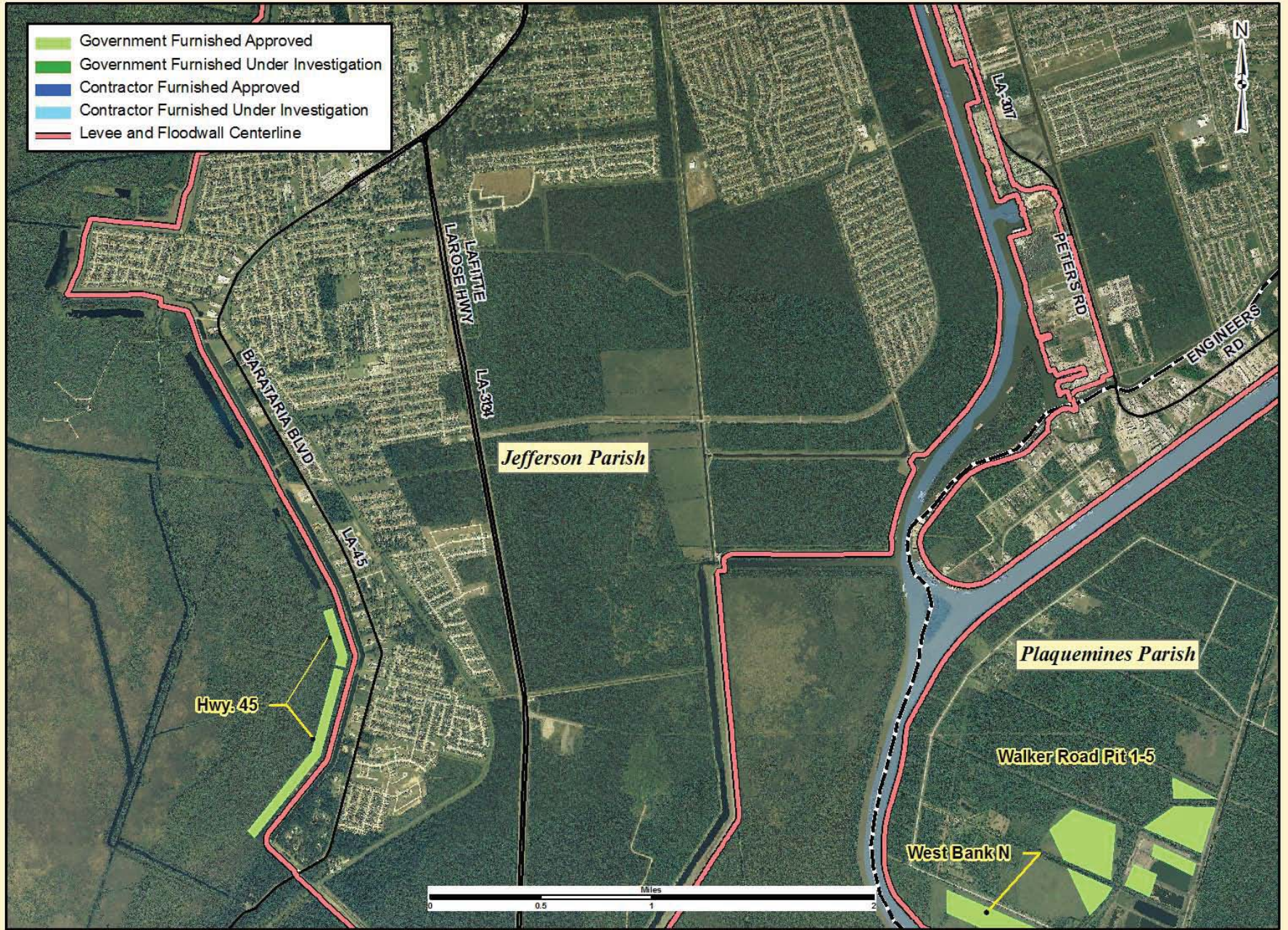


WEST BANK - JEFFERSON PARISH



WEST BANK 2 - JEFFERSON PARISH

- Government Furnished Approved
- Government Furnished Under Investigation
- Contractor Furnished Approved
- Contractor Furnished Under Investigation
- Levee and Floodwall Centerline



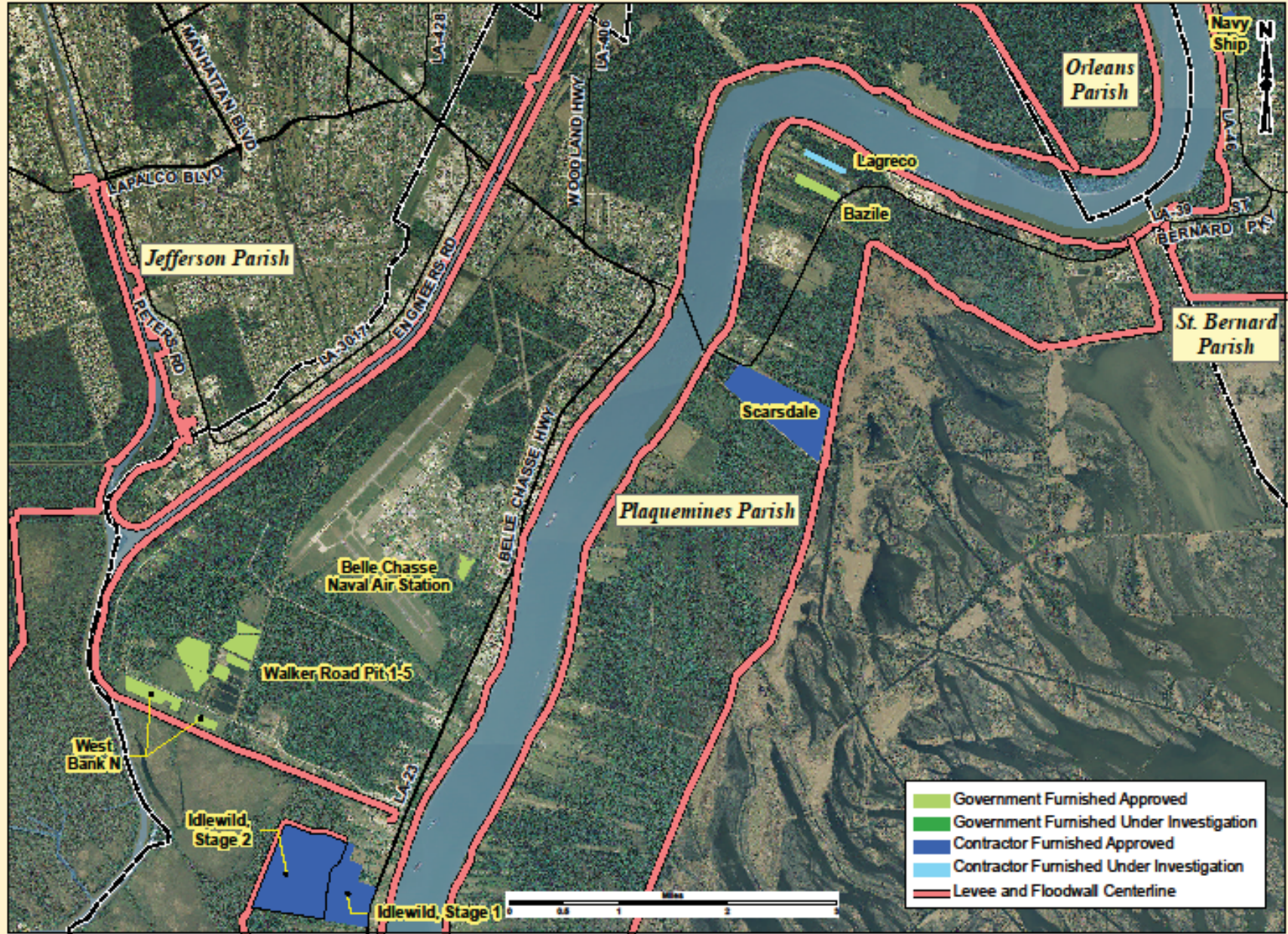
Updated on 1/17/2012

EGIS Map ID No. EGIS 09-037



US of Louisiana
New

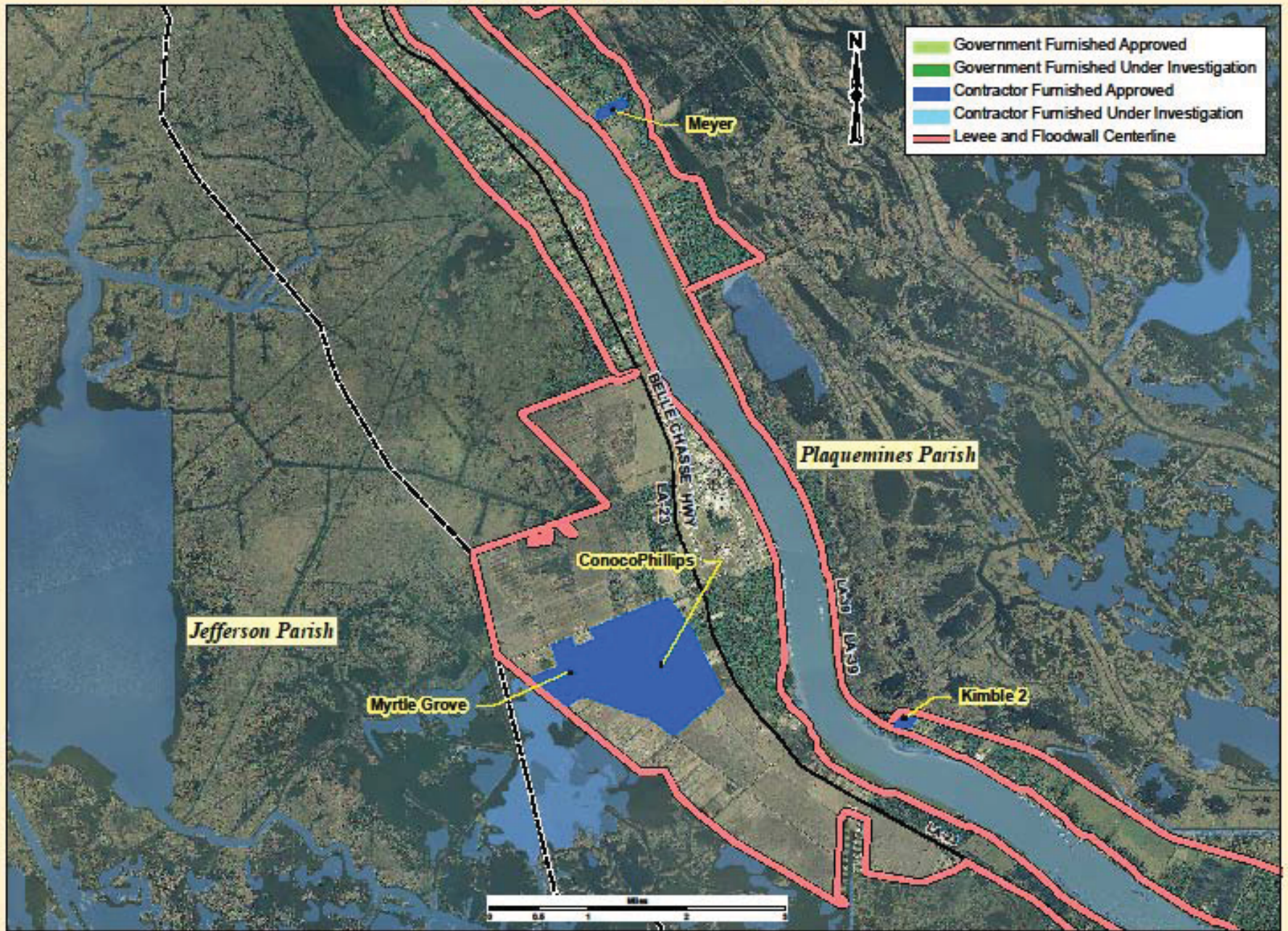
PLAQUEMINES PARISH 1



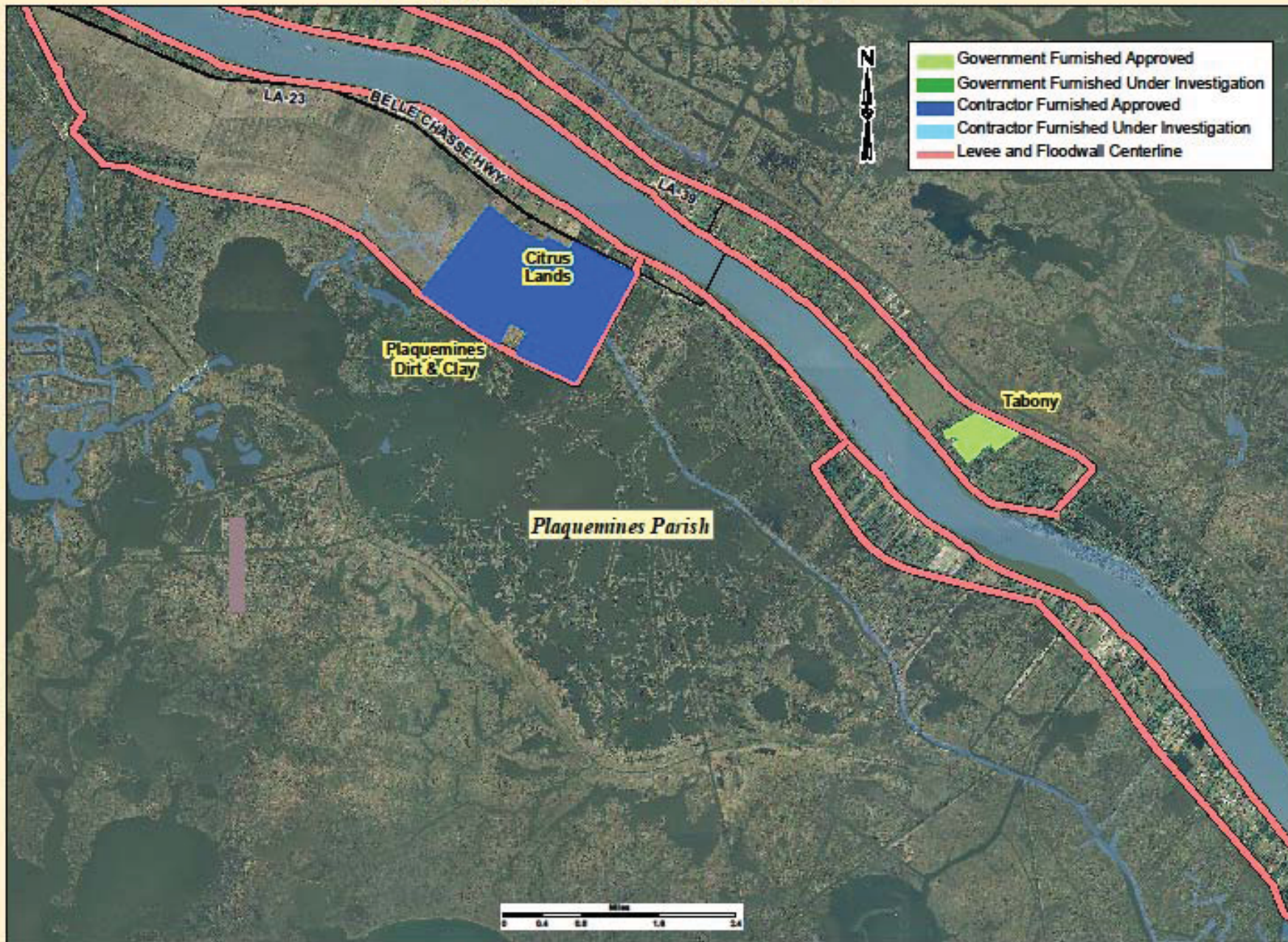
Updated on 7/20/2011

EGIS Map ID No. EGIS 09-037

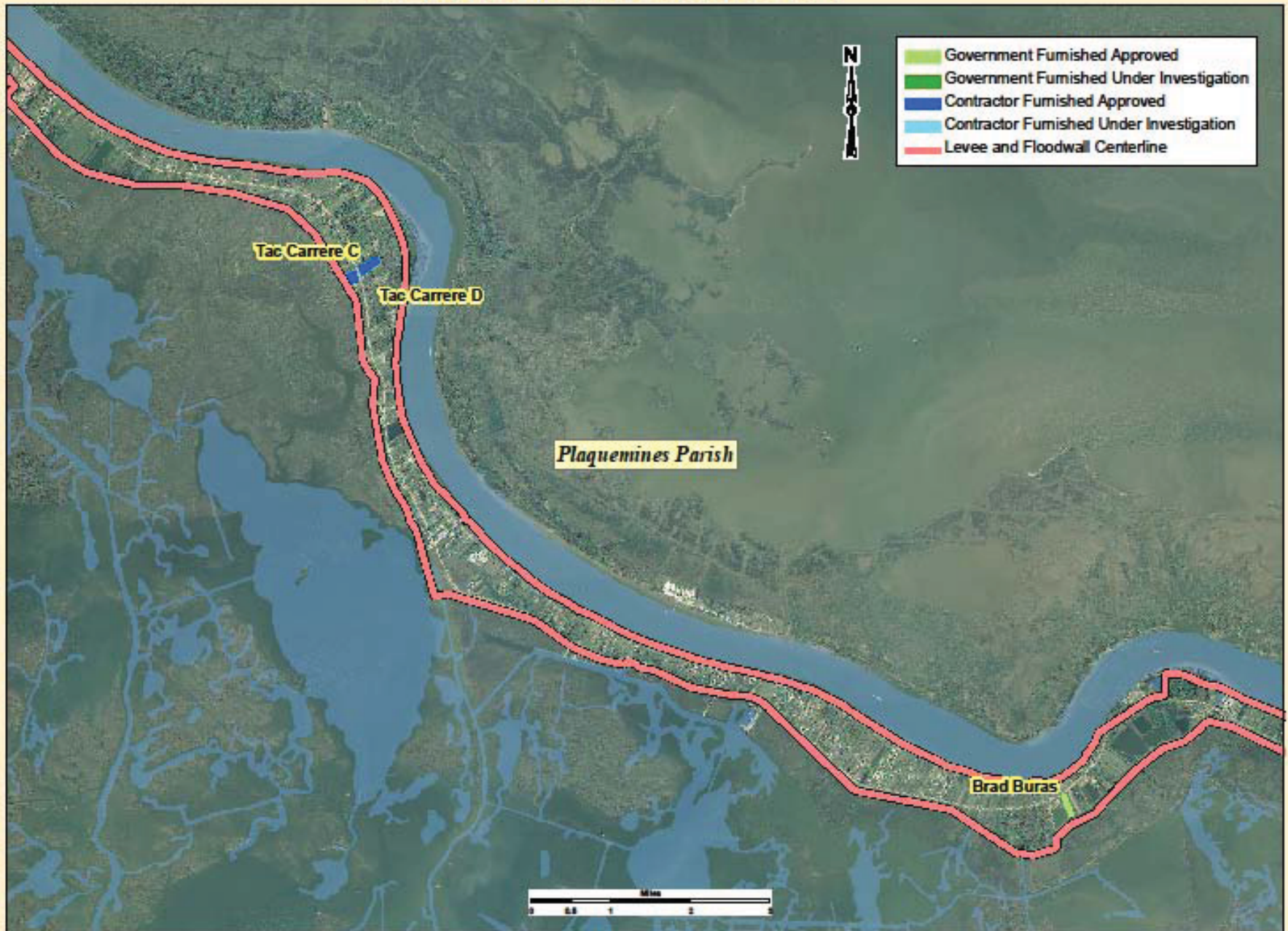
PLAQUEMINES PARISH 2



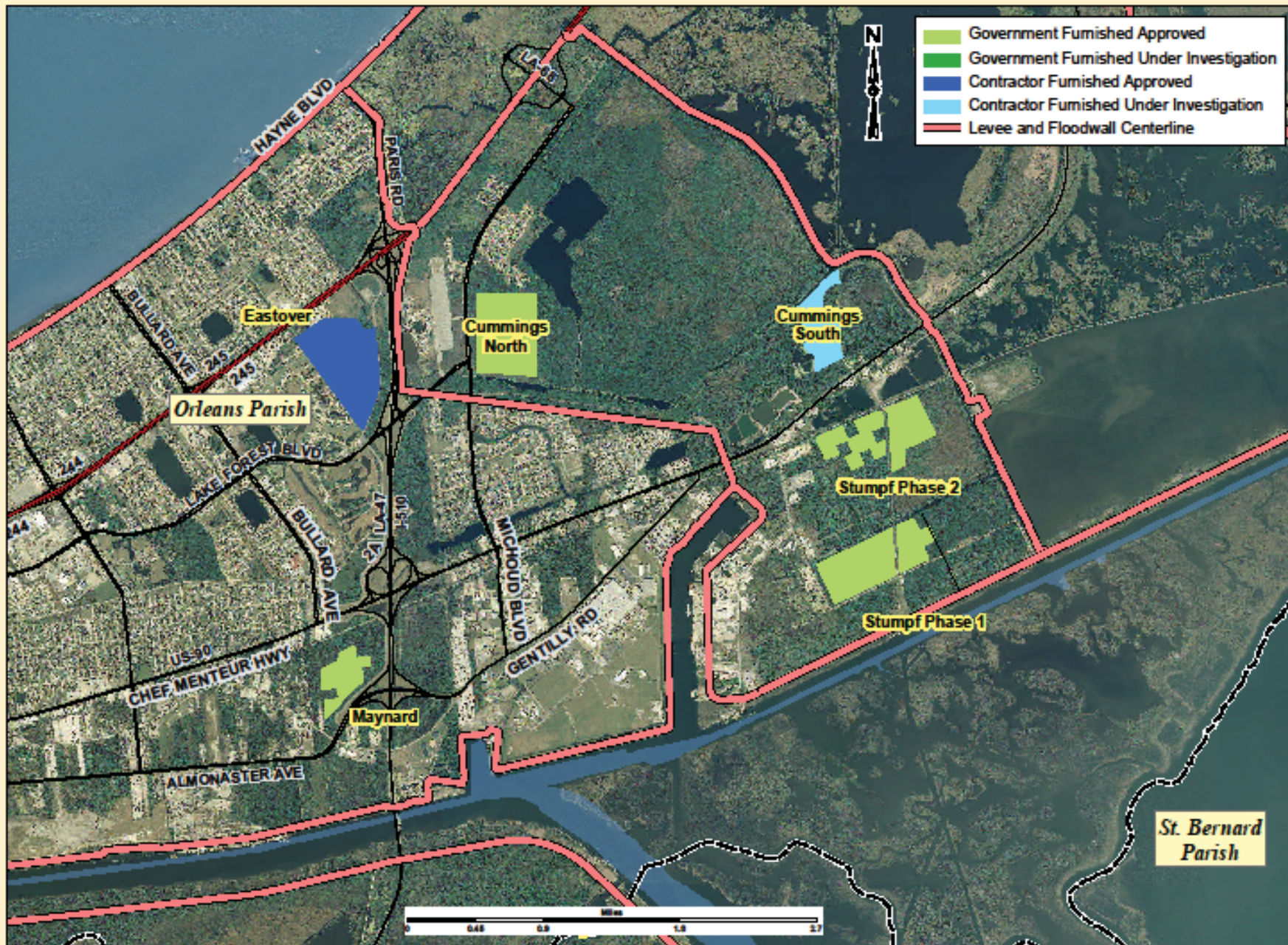
PLAQUEMINES PARISH 3



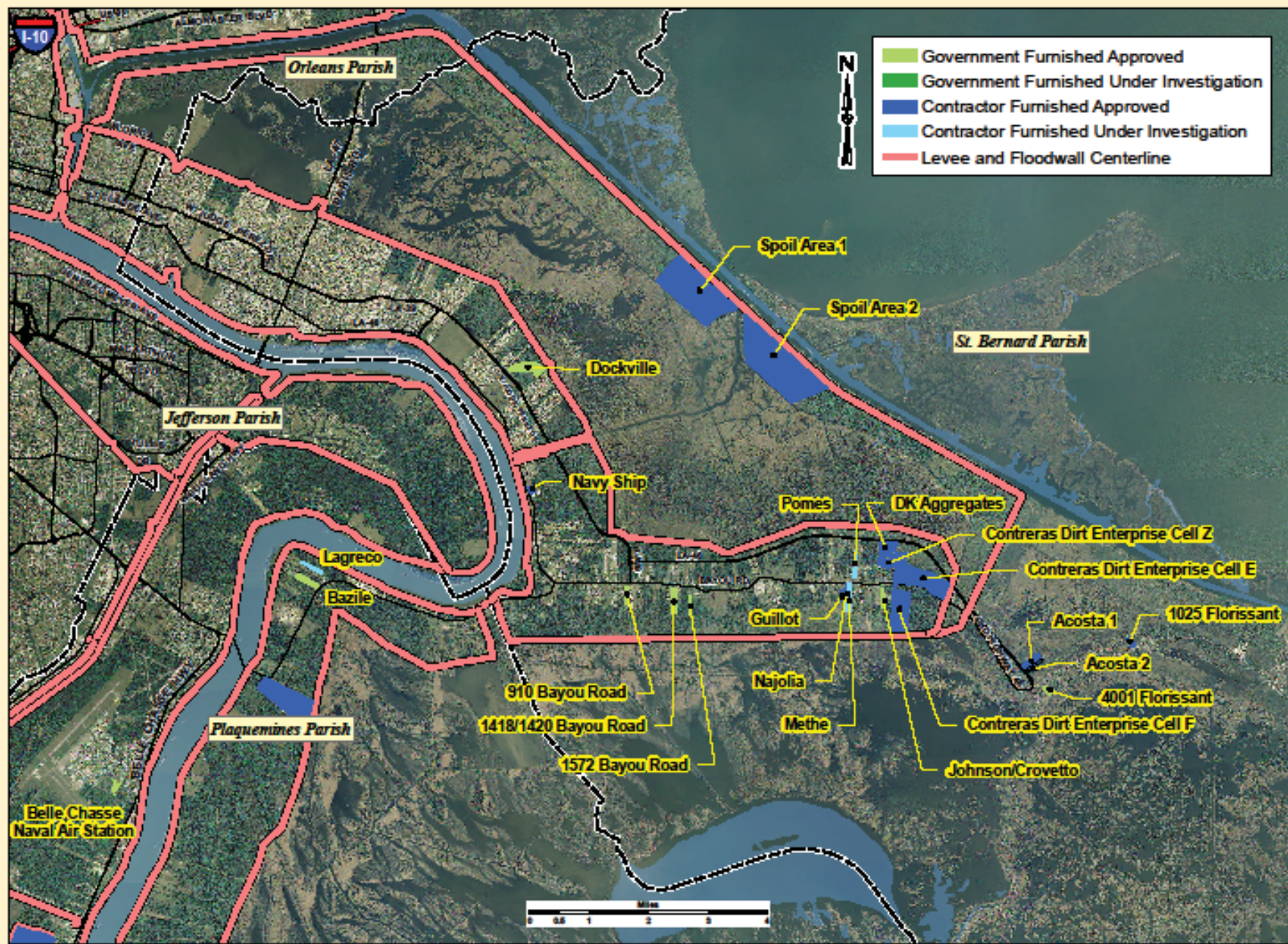
PLAQUEMINES PARISH 4



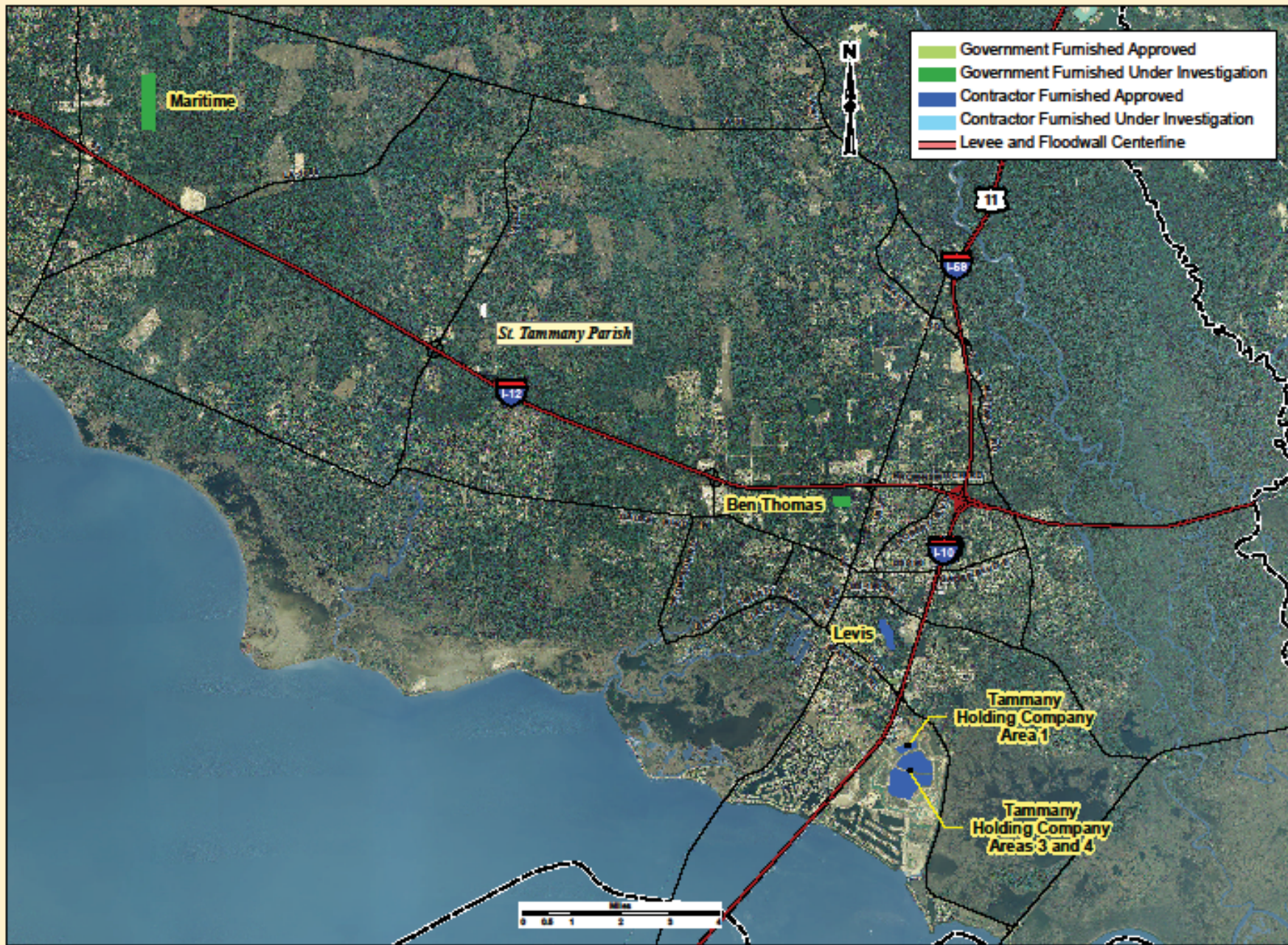
NEW ORLEANS EAST - ORLEANS PARISH



ST. BERNARD PARISH



ST. TAMMANY PARISH



MISSISSIPPI WEST

