



Barrier Berm Project – Daily Report

Day 66

Document: 139551-PMD-066-S

Date Prepared: August 6, 2010

Prepared by:

Shaw Environmental & Infrastructure Group



W9 Berm Operations – August 1, 2010

Barrier Berm Project 139551 – Daily Information

Yesterday – 5 August

Vessel	Cubic Yards (CY) Handled	Hopper Loads
East		
Cutter Alaska	46,574	
Cutter Texas	33,300	
Subtotal East	79,874	
West		
Cutter California	18,408	5 Scows
Cutter EW Ellefsen	50,556	
Cutter RS Weeks	0	
Hopper Stuyvesant	14,662	2
Hopper Liberty Island	4,908	1
Hopper Terrapin Island	7,184	2
Hopper Padre Island	5,386	2
Hopper BE Lindholm	5,892	2
Hopper Bayport	7,640	2
Hopper Glen Edwards	19,038	2
Subtotal West	133,674	13
Total	213,548	13

Today – 6 August

- Borrow operations to continue at Pass a Loutre and West, placement operations to continue at E4 North and W9.
- Three hopper dredges and one cutter dredge will be demobilized per current project execution.

Tomorrow – 7 August

- Today's operational activities expected to continue through tomorrow.

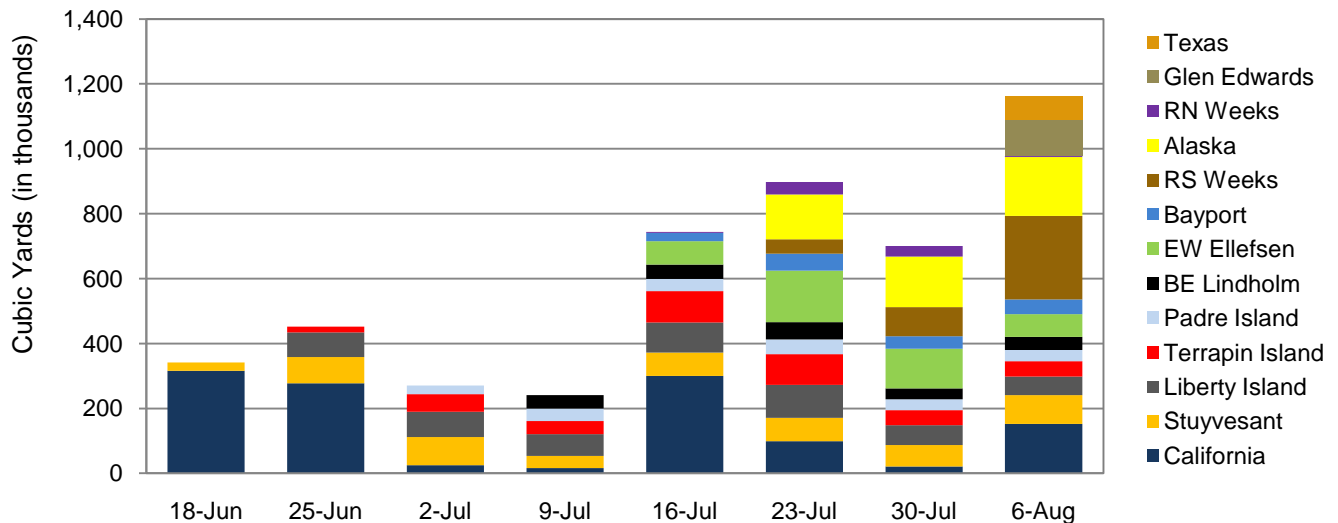
Near-Term Milestones

- Start E4 south berm construction forecast to begin 11 August.
- Start W10 berm construction forecast to begin 24 August.

Potential Schedule Variability Items

- Final permit requirements, third party agency requirements.
- Equipment rotation, uptime maximization and timely remaining operations.
- Additional permit conditions to refill borrow area 6A by early August.

All Dredges Weekly Volume



Barrier Berm Project 139551 – Cumulative Information

Inception to Date (ITD) Volume

Vessel	Handled - ITD (cy)	Hopper Loads - ITD
Cutter California	1,207,390	
Cutter EW Ellefsen	423,118	
Cutter RS Weeks	391,350	
Cutter Alaska	475,280	
Cutter Texas	71,458	
Hopper Stuyvesant	528,094	80
Hopper Liberty Island	535,190	122
Hopper Terrapin Island	396,737	117
Hopper Padre Island	216,153	82
Hopper BE Lindholm	213,646	73
Hopper Bayport	160,881	44
Hopper RN Weeks	77,010	28
Hopper Glen Edwards	113,916	12
Total	4,810,223	558

Progress by Berm and Borrow Operations

Location	Start	End	Forecast (cy)	Actual (cy)	To Go (cy)	Complete
E3	11-Aug-10	21-Oct-10	3,304,107	0	3,304,107	0.00%
E4	14-Jun-10 A	1-Nov-10	8,345,969	1,581,014	6,764,955	18.94%
W8	6-Sep-10	28-Nov-10	2,802,588	0	2,802,588	0.00%
W9	18-Jul-10 A	27-Aug-10	1,130,870	457,462	673,408	40.45%
W10	24-Aug-10	21-Sep-10	1,327,543	0	1,327,543	0.00%
W11	13-Oct-10	1-Nov-10	1,081,702	0	1,081,702	0.00%
Borrow Operations	16-Jun-10 A	18-Oct-10	13,088,593	2,771,747	10,316,846	21.18%
Totals			31,081,372	4,810,223	26,271,149	15.48%

Note: Percent complete of material handled represents only 1 of 3 elements of percent complete for the overall project.



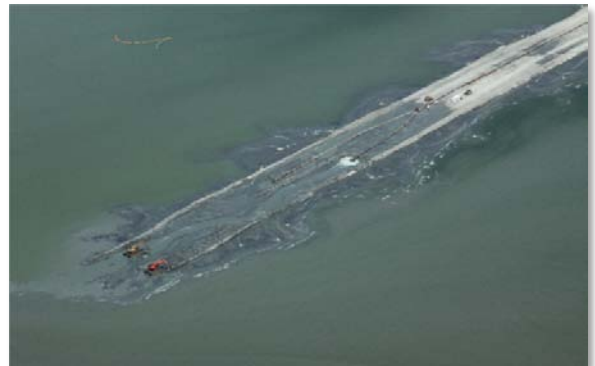
W9 Berm – August 1, 2010



W9 Berm Construction – August 1, 2010



E4 Berm – August 1, 2010



E4 Berm Construction – August 1, 2010