



# Barrier Berm Project – Daily Report

## Day 56

---

**Document:** 139551-PMD-056-S

**Date Prepared:** July 27, 2010

**Prepared by:**  
Shaw Environmental & Infrastructure Group

---



E4 Berm – July 22<sup>nd</sup>, 2010

# Barrier Berm Project 139551 – Daily Information

Yesterday – 26 July

Vessel	Cubic Yards (CY) Handled	Hopper Loads
<b>East</b>		
Cutter California	0	
Cutter Alaska	3,283	
<b>Subtotal East</b>	<b>3,283</b>	<b>0</b>
<b>West</b>		
Cutter EW Ellefsen	22,240	
Cutter RS Weeks	17,196	
Hopper Liberty Island	9,540	2
Hopper Terrapin Island	7,086	2
Hopper Padre Island	2,173	1
Hopper Stuyvesant	0	0
Hopper BE Lindholm	5,708	2
Hopper Bayport	7,291	2
Hopper RN Weeks	5,031	2
<b>Subtotal West</b>	<b>76,265</b>	<b>11</b>
<b>Total</b>	<b>79,548</b>	<b>11</b>

Today – 27 July

- Borrow operations at Pass a Loutre and West to continue.
- Placement operations to continue at E4 North and W9.

Tomorrow – 28 July

- Borrow operations to continue at Pass a Loutre, placement operations to continue at E4 North and W9.

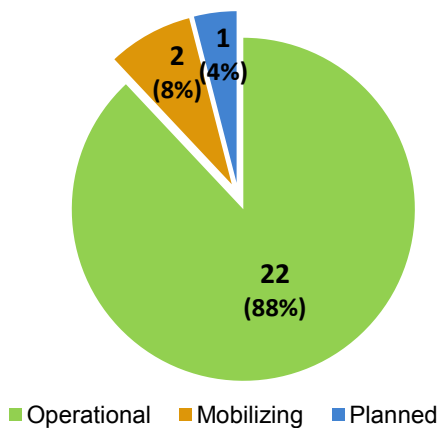
## Near-Term Milestones

- Start of E4 South berm construction forecast to begin 29 July.
- Forecast completion of first mile of berm approximately 29 July.
- Start of W10 berm construction forecast to begin 10 August.

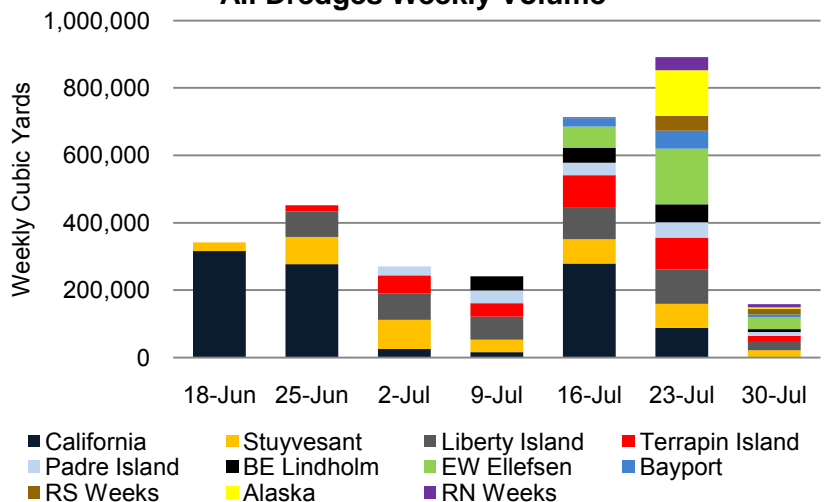
## Potential Schedule Variability Items

- Final permit requirements, third party agency requirements.
- Equipment rotation, uptime maximization and timely remaining operations.
- Additional permit conditions to refill borrow area 6A by early August.

**Fleet Mix**  
(total vessel count)



**All Dredges Weekly Volume**



## Barrier Berm Project 139551 – Cumulative Information

### Inception to Date (ITD) Volume

Vessel	Handled - ITD (cy)	Hopper Loads - ITD
Cutter California	1,001,714	
Cutter EW Ellefsen	263,525	
Cutter RS Weeks	61,213	
Cutter Alaska	139,017	
Hopper Stuyvesant	395,134	63
Hopper Liberty Island	441,194	102
Hopper Terrapin Island	321,186	96
Hopper Padre Island	160,015	63
Hopper BE Lindholm	147,805	50
Hopper Bayport	85,002	18
Hopper RN Weeks	51,603	19
<b>Total</b>	<b>3,067,408</b>	<b>411</b>

### Progress by Berm and Borrow Operations

Location	Start	End	Forecast (cy)	Actual (cy)	To Go (cy)	Complete
E3	28-Jul-10	21-Oct-10	3,304,107	0	3,304,107	0.00%
E4	14-Jun-10 A	1-Nov-10	8,345,969	1,140,731	7,205,238	13.67%
W8	21-Aug-10	28-Nov-10	2,802,588	0	2,802,588	0.00%
W9	18-Jul-10 A	27-Aug-10	1,130,870	61,213	1,069,657	5.41%
W10	8-Aug-10	21-Sep-10	1,327,543	0	1,327,543	0.00%
W11	28-Sep-10	1-Nov-10	1,081,702	0	1,081,702	0.00%
Borrow Operations	16-Jun-10 A	18-Oct-10	13,088,593	1,865,464	11,223,129	14.25%
<b>Totals</b>			<b>31,081,372</b>	<b>3,067,408</b>	<b>28,013,964</b>	<b>9.87%</b>

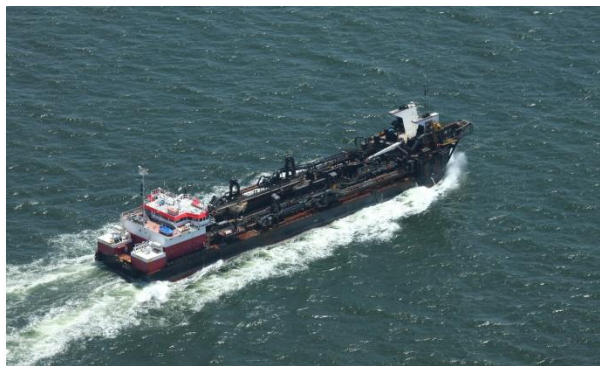
Note: Percent complete of material handled represents only 1 of 3 elements of percent complete for the overall project.



RS Weeks cutter dredge - July 22, 2010



E4 Aerial Photo – July 22, 2010



RN Weeks hopper dredge - July 22, 2010



W9 Aerial Photo – July 22, 2010