



Barrier Berm Project – Daily Report

Day 175

Document: 139551-PMD-175-S

Date Prepared: November 23, 2010

Prepared by:

Shaw Environmental & Infrastructure Group



W8, W9, & W10 Berms – November 21, 2010

Barrier Berm Project 139551 – Daily Information

Yesterday – 22 November

Vessel	Cubic Yards (CY) Handled
East	
Cutter Alaska	0
Subtotal East	0
West	
Cutter EW Ellefsen	39,979
Cutter Texas	11,020
Subtotal West	50,999
Total	50,999

- Alaska down due to weather the entire day.

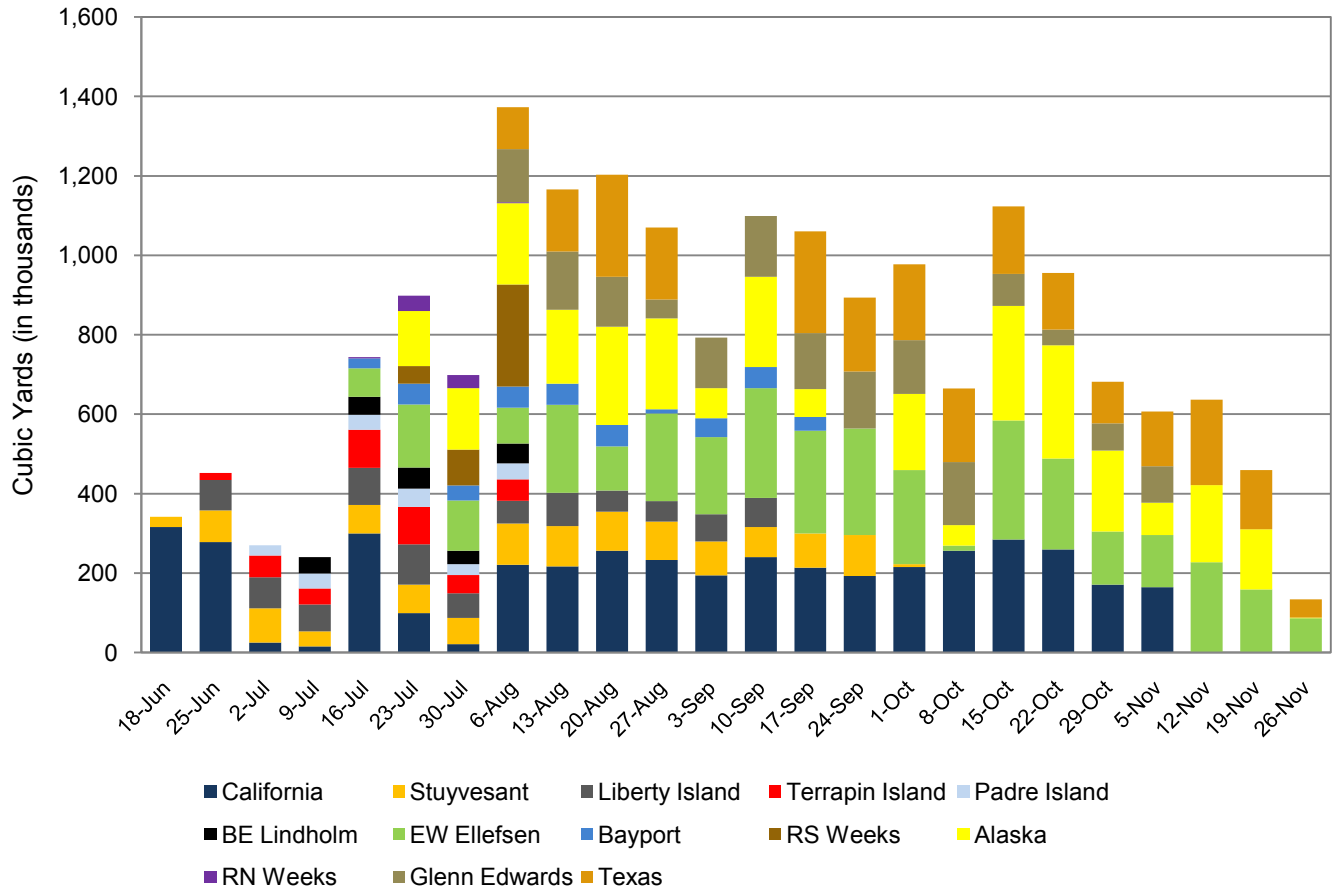
Today – 23 November

- Berm operations to continue on W8 and W10.
- West side dredging operations to finish, Texas and EW Ellefsen will begin demobilization.
- East side production to resume once weather permits and repairs are finished.

Tomorrow – 24 November

- East side production to continue as repairs are finished.
- Demobilization of West side operations to continue.

All Dredges Weekly Volume



Barrier Berm Project 139551 – Cumulative Information

Inception to Date (ITD) Volume

Vessel	Handled - ITD (cy)	Hopper Loads - ITD
Cutter California*	4,175,650	
Cutter EW Ellefsen	3,512,650	
Cutter RS Weeks *	391,350	
Cutter Alaska	2,982,400	
Cutter Texas	2,483,652	
Hopper Stuyvesant *	1,198,692	175
Hopper Liberty Island *	864,508	192
Hopper Bayport *	421,280	114
Hopper Glenn Edwards*	1,593,128	162
Hopper Terrapin Island *	403,823	119
Hopper Padre Island *	216,133	84
Hopper BE Lindholm *	222,527	76
Hopper RN Weeks *	77,010	29
Total	18,542,803	951

* Demobilized from Project.

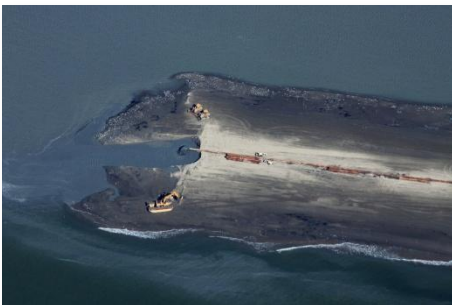
Progress by Berm and Borrow Operations (volume)

Location	Actuals (CY)
E3	0
E4	4,716,187
W8	1,264,691
W9	2,281,314
W10	1,784,141
W11	0
Borrow Operations	8,496,470
Totals	18,542,803

Progress by Berm (distance)

Location	Under Construction (LF)
E3	0
E4	30,996
W8	8,289
W9	12,449
W10	14,230
W11	0
Totals	65,964

Note: Under Construction represents linear footage of berm placed; all material may not yet conform to elevation +6.



W8 Berm Operations – November 21, 2010



E4 North Berm – November 21, 2010