



# Barrier Berm Project – Daily Report

## Day 116

---

Document: 139551-PMD-116-S

Date Prepared: September 25, 2010

Prepared by:

Shaw Environmental & Infrastructure Group

---



*W10 Berm – September 23, 2010*

# Barrier Berm Project 139551 – Daily Information

## Yesterday – 24 September

Vessel	Cubic Yards (CY) Handled	Hopper Loads
<b>East</b>		
Cutter Alaska	0	
<b>Subtotal East</b>	<b>0</b>	
<b>West</b>		
Cutter California	20,285	7 Scows
Cutter EW Ellefsen	43,954	
Cutter Texas	18,990	
Hopper Stuyvesant	14,256	2
Hopper Glenn Edwards	18,999	2
<b>Subtotal West</b>	<b>116,484</b>	<b>4</b>
<b>Total</b>	<b>116,484</b>	<b>4</b>

## Today – 25 September

- Borrow operations at Pass a Loutre and West to continue.
- Berm placement operations to continue on W9 and W10.
- Alaska to resume operations at E4 with improved weather.

## Tomorrow – 26 September

- Today's operational activities to continue through tomorrow.

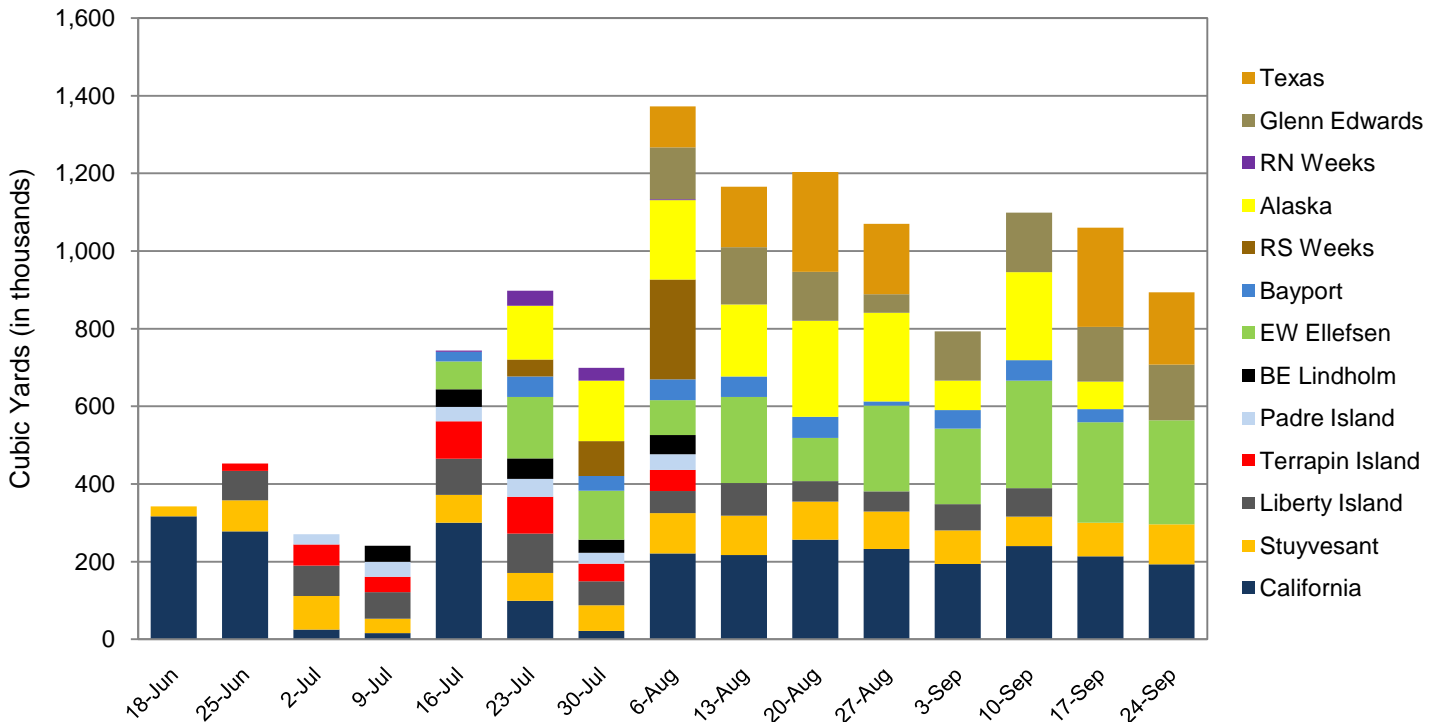
## Near-Term Milestones

- Completion of W9 berm construction forecast for 27 September.

## Potential Schedule Variability Items

- Final permit requirements, third party agency requirements.
- New tropical storm developed in Central America with potential impact to the Gulf of Mexico.

**All Dredges Weekly Volume**



## Barrier Berm Project 139551 – Cumulative Information

### Inception to Date (ITD) Volume

Vessel	Handled - ITD (cy)
Cutter California	2,823,849
Cutter EW Ellefsen	1,997,803
Cutter RS Weeks *	391,350
Cutter Alaska	1,533,045
Cutter Texas	1,140,932
Hopper Stuyvesant	1,191,480
Hopper Liberty Island *	864,508
Hopper Bayport *	421,280
Hopper Glenn Edwards	1,019,363
Hopper Terrapin Island *	403,823
Hopper Padre Island *	216,133
Hopper BE Lindholm *	222,527
Hopper RN Weeks *	77,010
<b>Total</b>	<b>12,303,103</b>

\* Demobilized from Project.

### Progress by Berm and Borrow Operations (volume)

Location	Start	End	Forecast (cy)**	Actual (cy)	To Go (cy)	Complete
E3	30-Dec-10	3-Apr-11	1,200,000	0	1,200,000	0.00%
E4	14-Jun-10 A	8-Feb-11	9,978,900	3,266,832	6,712,068	32.74%
W8	4-Oct-10	1-Jan-11	1,243,548	0	1,243,548	0.00%
W9	18-Jul-10 A	27-Sep-10	1,929,494	2,031,158	***	99.32%
W10	13-Sep-10 A	3-Nov-10	1,588,710	441,421	1,147,289	27.78%
W11	10-Nov-10	14-Dec-10	2,729,032	0	2,729,032	0.00%
Borrow Operations	16-Jun-10 A	7-Dec-10	9,162,418	6,563,692	2,598,726	71.64%
<b>Totals</b>			<b>27,832,102</b>	<b>12,303,103</b>	<b>15,630,663</b>	<b>44.20%</b>

Note: Percent complete of material handled represents only 1 of 3 elements of percent complete for the overall project.

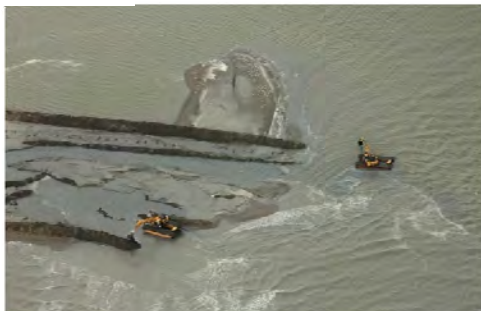
\*\*\*Quantity variance as a result of field conditions and material variations; W9 nearing completion.

### Progress by Berm (distance)

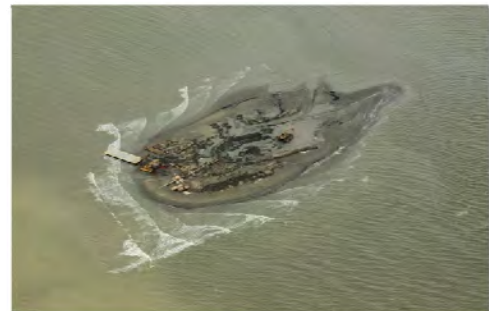
Location	Forecast (LF)**	Under Construction (LF)	To Go (LF)	Complete
E3	8,500	0	8,500	0.00%
E4	63,280	16,395	46,885	25.91%
W8	9,480	0	9,480	0.00%
W9	13,030	11,404	1,626	87.52%
W10	15,700	600	15,100	3.82%
W11	23,000	0	23,000	0.00%
<b>Totals</b>	<b>132,990</b>	<b>28,399</b>	<b>104,591</b>	<b>21.35%</b>

Note: Under Construction represents linear footage of berm placed; all material may not yet conform to elevation +6.

\*\* Tended project completion quantities.



W9 Berm Operations – September 19, 2010



W10 Berm Initial Pad – September 19, 2010