



Barrier Berm Project – Daily Report

Day 114

Document: 139551-PMD-114-S

Date Prepared: September 23, 2010

Prepared by:

Shaw Environmental & Infrastructure Group



W9 Berm – September 21, 2010

Barrier Berm Project 139551 – Daily Information

Yesterday – 22 September

Vessel	Cubic Yards (CY) Handled	Hopper Loads
East		
Cutter Alaska	0	
Subtotal East	0	
West		
Cutter California	29,604	8 Scows
Cutter EW Ellefsen	14,921	
Cutter Texas	26,400	
Hopper Stuyvesant	14,879	2
Hopper Glenn Edwards	18,855	2
Subtotal West	104,659	4
Total	104,659	4

- Alaska has completed repairs and is remobilizing to Hewes Point; will return to production when weather conditions allow.

Today – 23 September

- Borrow operations at Pass a Loutre and West to continue.
- Berm placement operations to continue on W9 and W10.

Tomorrow – 24 September

- Today's operational activities to continue through tomorrow.

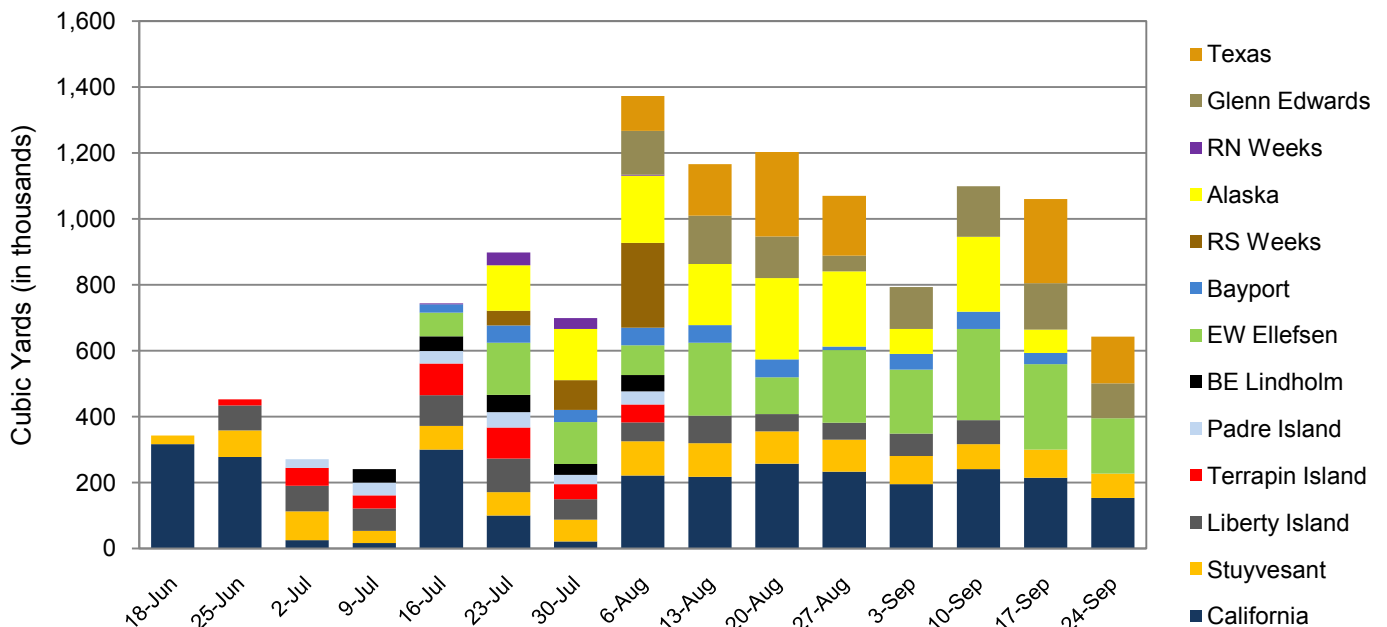
Near-Term Milestones

- Completion of W9 berm construction forecast for 26 September.

Potential Schedule Variability Items

- Final permit requirements, third party agency requirements.
- New potential storm developing in the Caribbean.

All Dredges Weekly Volume



Barrier Berm Project 139551 – Cumulative Information

Inception to Date (ITD) Volume

Vessel	Handled - ITD (cy)	Hopper Loads - ITD
Cutter California	2,783,835	
Cutter EW Ellefsen	1,898,027	
Cutter RS Weeks *	391,350	
Cutter Alaska	1,533,045	
Cutter Texas	1,096,442	
Hopper Stuyvesant	1,162,405	170
Hopper Liberty Island *	864,508	192
Hopper Bayport *	421,280	114
Hopper Glenn Edwards	981,325	100
Hopper Terrapin Island *	403,823	119
Hopper Padre Island *	216,133	84
Hopper BE Lindholm *	222,527	76
Hopper RN Weeks *	77,010	29
Total	12,051,710	884

* Demobilized from Project.

Progress by Berm and Borrow Operations (volume)

Location	Start	End	Forecast (cy)**	Actual (cy)	To Go (cy)	Complete
E3	30-Dec-10	3-Apr-11	1,200,000	0	1,200,000	0.00%
E4	14-Jun-10 A	8-Feb-11	9,978,900	3,266,832	6,712,068	32.74%
W8	4-Oct-10	1-Jan-11	1,243,548	0	1,243,548	0.00%
W9	18-Jul-10 A	26-Sep-10	1,929,494	1,931,382	***	99.32%
W10	13-Sep-10 A	3-Nov-10	1,588,710	396,931	1,191,779	24.98%
W11	10-Nov-10	14-Dec-10	2,729,032	0	2,729,032	0.00%
Borrow Operations	16-Jun-10 A	7-Dec-10	9,162,418	6,456,565	2,705,853	70.47%
Totals			27,832,102	12,051,710	15,782,280	43.30%

Note: Percent complete of material handled represents only 1 of 3 elements of percent complete for the overall project.

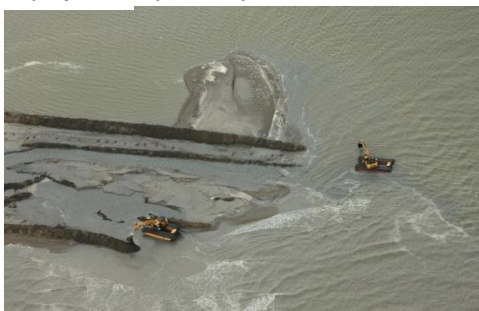
***Quantity variance as a result of field conditions and material variations; W9 nearing completion.

Progress by Berm (distance)

Location	Forecast (LF)**	Under Construction (LF)	To Go (LF)	Complete
E3	8,500	0	8,500	0.00%
E4	63,280	16,395	46,885	25.91%
W8	9,480	0	9,480	0.00%
W9	13,030	11,204	1,826	85.99%
W10	15,700	0	15,700	0.00%
W11	23,000	0	23,000	0.00%
Totals	132,990	27,599	105,391	20.75%

Note: Under Construction represents linear footage of berm placed; all material may not yet conform to elevation +6.

** Trended project completion quantities.



W9 Berm Operations – September 19, 2010



W10 Berm Initial Pad– September 19, 2010