



Barrier Berm Project – Daily Report

Day 101

Document: 139551-PMD-101-S

Date Prepared: September 10, 2010

Prepared by:
Shaw Environmental & Infrastructure Group



W9 Berm – September 9, 2010

Barrier Berm Project 139551 – Daily Information

Yesterday – 9 September

Vessel	Cubic Yards (CY) Handled	Hopper Loads
East		
Cutter Alaska	28,838	
Subtotal East	28,838	
West		
Cutter California	17,939	7 Scows
Cutter EW Ellefsen	53,054	
Cutter Texas	0	
Hopper Stuyvesant	14,011	2
Hopper Liberty Island	10,013	2
Hopper Bayport	7,586	2
Hopper Glenn Edwards	20,464	2
Subtotal West	123,067	8
Total	151,905	8

Today – 10 September

- Borrow operations at Pass a Loutre and West to continue.
- Berm placement operations to continue on E4 North and W9.
- Pipeline lay from rehandling area 25-5 to W10 to continue.

Tomorrow – 11 September

- Today's operational activities to continue through tomorrow.

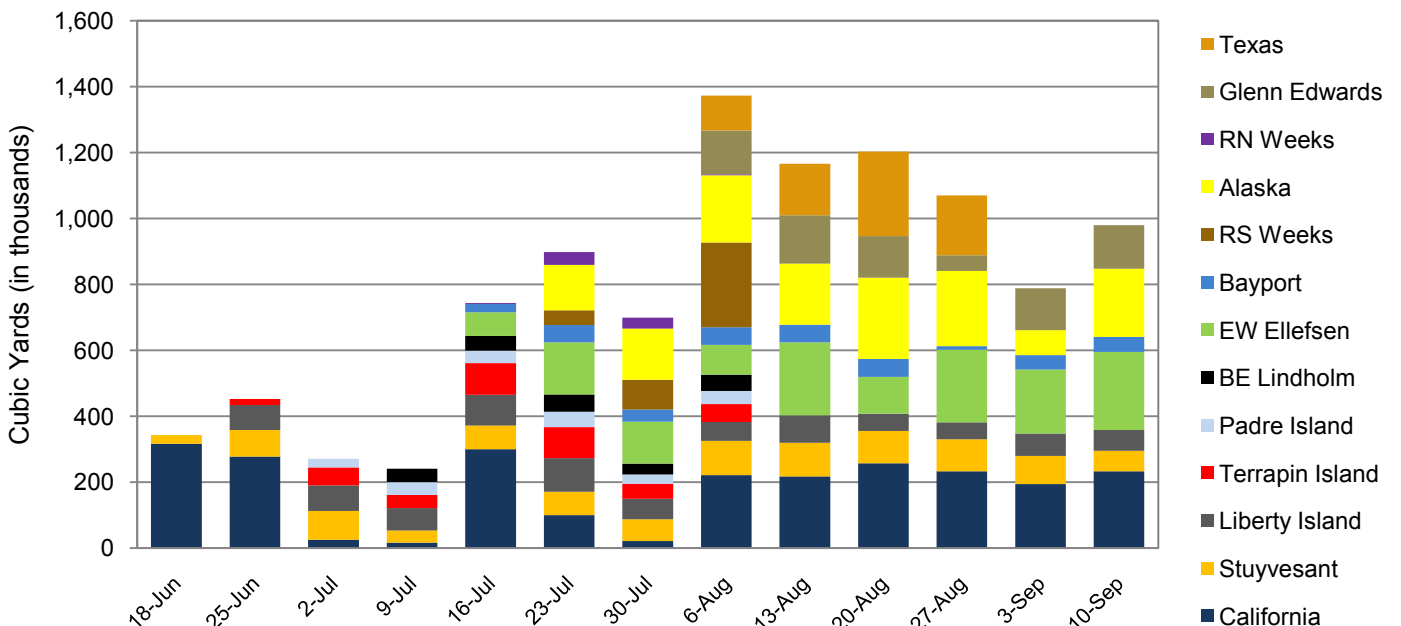
Near-Term Milestones

- Start of W10 berm construction forecast to begin 12 September.
- Completion of W9 berm construction forecast for 26 September.

Potential Schedule Variability Items

- Final permit requirements, third party agency requirements.

All Dredges Weekly Volume



Barrier Berm Project 139551 – Cumulative Information

Inception to Date (ITD) Volume

Vessel	Handled - ITD (cy)	Hopper Loads - ITD
Cutter California	2,409,680	
Cutter EW Ellefsen	1,431,709	
Cutter RS Weeks *	391,350	
Cutter Alaska	1,442,294	
Cutter Texas	699,511	
Hopper Stuyvesant	987,123	147
Hopper Liberty Island	854,515	191
Hopper Bayport	375,664	103
Hopper Glenn Edwards	714,177	73
Hopper Terrapin Island *	403,823	119
Hopper Padre Island *	216,133	84
Hopper BE Lindholm *	222,527	76
Hopper RN Weeks *	77,010	29
Total	10,225,516	822

* Demobilized on or before August 6th.

Progress by Berm and Borrow Operations (cubic yards)

Location	Start	End	Forecast (cy)	Actual (cy)	To Go (cy)	Complete
E3	29-Dec-10	2-Apr-11	3,304,107	0	3,304,107	0.00%
E4	14-Jun-10 A	7-Feb-11	8,345,969	3,176,081	5,169,888	38.06%
W8	4-Oct-10	1-Jan-11	2,802,588	0	2,802,588	0.00%
W9	18-Jul-10 A	26-Sep-10	1,929,494**	1,465,064	464,430	75.93%
W10	12-Sep-10	2-Nov-10	1,327,543	0	1,327,543	0.00%
W11	9-Nov-10	13-Dec-10	1,081,702	0	1,081,702	0.00%
Borrow Operations	16-Jun-10 A	7-Dec-10	10,917,069**	5,584,371	5,332,698	51.15%
Totals			29,708,472	10,225,516	19,482,956	34.42%

Note: Percent complete of material handled represents only 1 of 3 elements of percent complete for the overall project.

Progress by Berm (linear feet)

Location	Forecast (LF)	Under Construction (LF)*	To Go (LF)	Complete
E3	35,482	0	35,482	0.00%
E4	80,520	15,410	65,110	19.14%
W8	30,096	0	30,096	0.00%
W9	13,030**	7,300	5,730	56.02%
W10	14,256	0	14,256	0.00%
W11	11,616	0	11,616	0.00%
Totals	185,000	22,710	162,290	12.28%

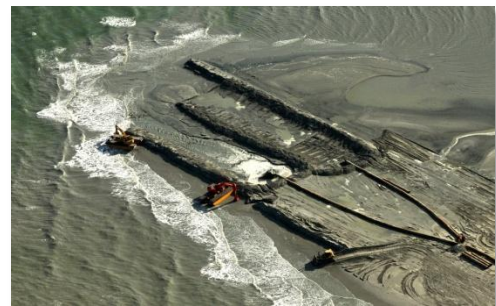
Note: Data subject to one day lag. Under normal field conditions, berm is advancing approximately 500 LF per reach per day.

*Under Construction represents linear footage of berm placed; all material may not yet conform to elevation +6.

** Revised quantities based on project change control program.



W9 Berm Operations – September 7, 2010



E4 North Berm – September 7, 2010